

MICRO LOG



Company GORE OIL COMPANY
 Well PRAIRIE HOMESTEAD #1-18
 Field WILDCAT
 County ROOKS State KANSAS

Location: API #: 15-163-24426-0000
 1550' FNL & 1800' FWL
 NE - NW - SE - NW
 Permanent Datum GROUND LEVEL Elevation 2015
 Log Measured From KELLY BUSHING 8' A.G.L.
 Drilling Measured From KELLY BUSHING
 SEC 18 TWP 9S RGE 17W
 Other Services CDL/CNL/PE DIL
 Elevation K.B. 2023 D.F. 2021 G.L. 2015

Date	6/21/21
Run Number	TWO
Depth Driller	3573
Depth Logger	3570
Bottom Logged Interval	3568
Top Log Interval	2800
Casing Driller	8 5/8"@267'
Casing Logger	267
Bit Size	7 7/8"
Type Fluid in Hole	CHEMICAL MUD
Density / Viscosity	8.9/52
pH / Fluid Loss	10.5/5.8
Source of Sample	FLOWLINE
Rm @ Meas. Temp	.600@90F
Rmf @ Meas. Temp	.450@90F
Rmc @ Meas. Temp	.720@90F
Source of Rmf / Rmc	MEASUREMENT
Rm @ BHT	.482@112F
Time Circulation Stopped	3.5 HOURS
Time Logger on Bottom	9.45 P.M.
Maximum Recorded Temperature	112F
Equipment Number	922339
Location	HAYS, KANSAS
Recorded By	JEFF LUEBBERS
Witnessed By	CHUCK SCHMALTZ

<<< Fold Here >>>

All interpretations are opinions based on inferences from electrical or other measurements and we cannot and do not guarantee the accuracy or correctness of any interpretation, and we shall not, except in the case of gross or willful negligence on our part, be liable or responsible for any loss, costs, damages, or expenses incurred or sustained by anyone resulting from any interpretation made by any of our officers, agents or employees. These interpretations are also subject to our general terms and conditions set out in our current Price Schedule.

15-163-24426-0000 Comments

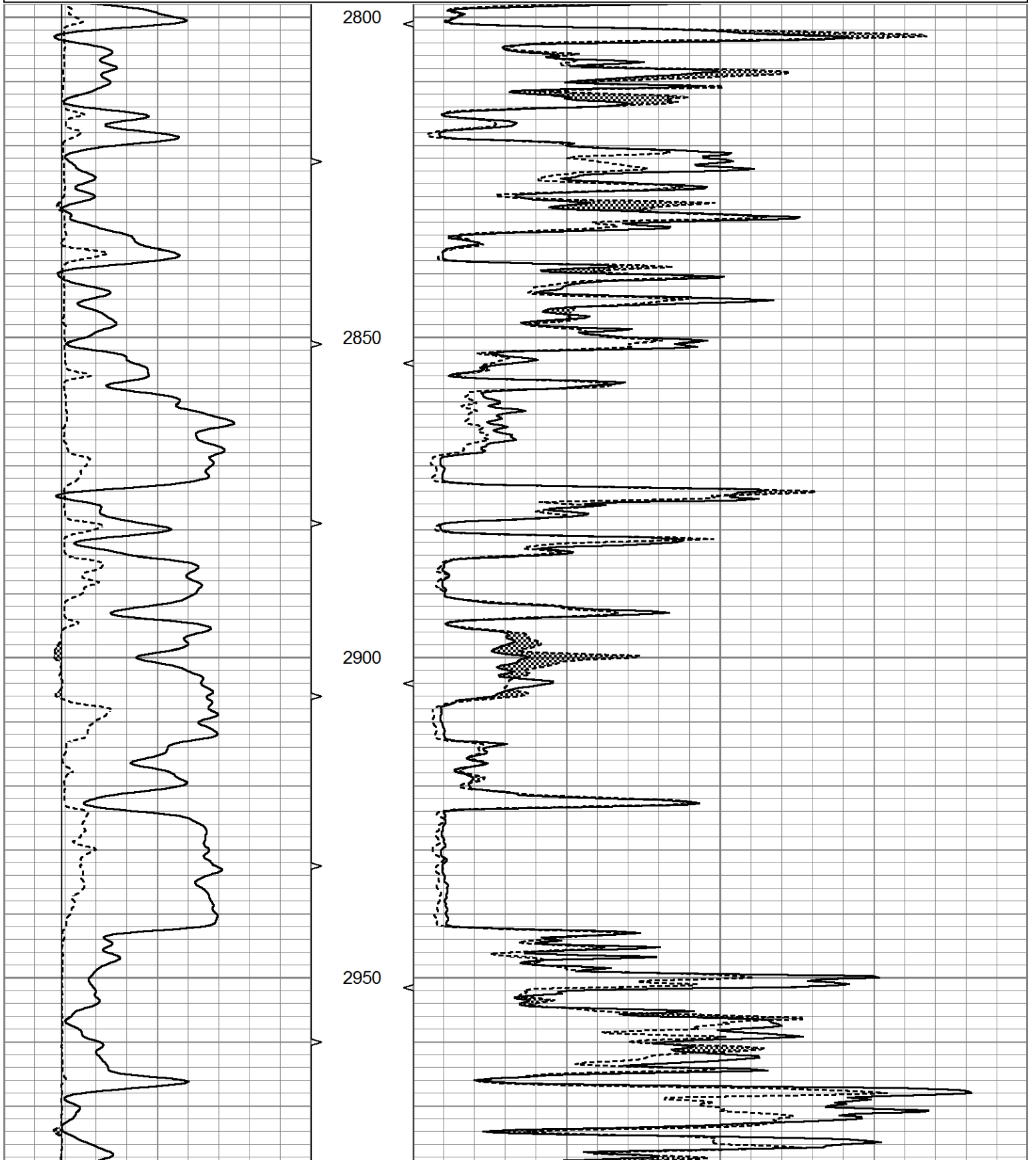
THANK YOU FOR USING ELI WIRELINE HAYS, KANSAS (785) 628-6395
 DIRECTIONS
 PLAINVILLE, KS. (4 WAY STOP) 3N. ON HWY 183, TO "U RD.", 1 1/2 E., S. INTO

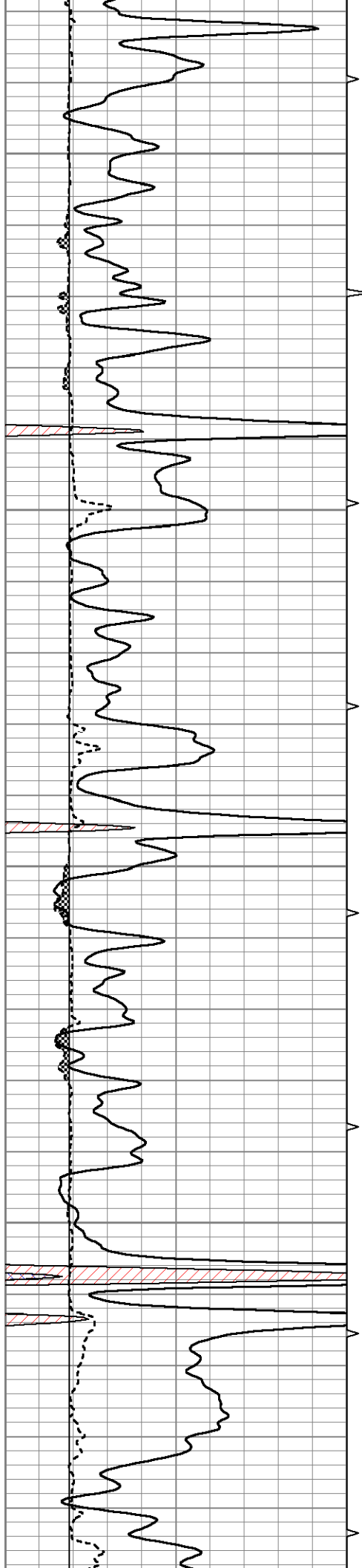


MAIN SECTION

Database File 5578ddn.db
 Dataset Pathname pass6.1
 Presentation Format micro
 Dataset Creation Mon Jun 21 22:18:01 2021
 Charted by Depth in Feet scaled 1:240

0	GR (GAPI)	150	ABHV	0	MEL20 (Ohm-m)	40
6	MELCAL (in)	16	10 (ft3)	0	MEL15 (Ohm-m)	40
			ABHV			
			0 (ft3)	10		



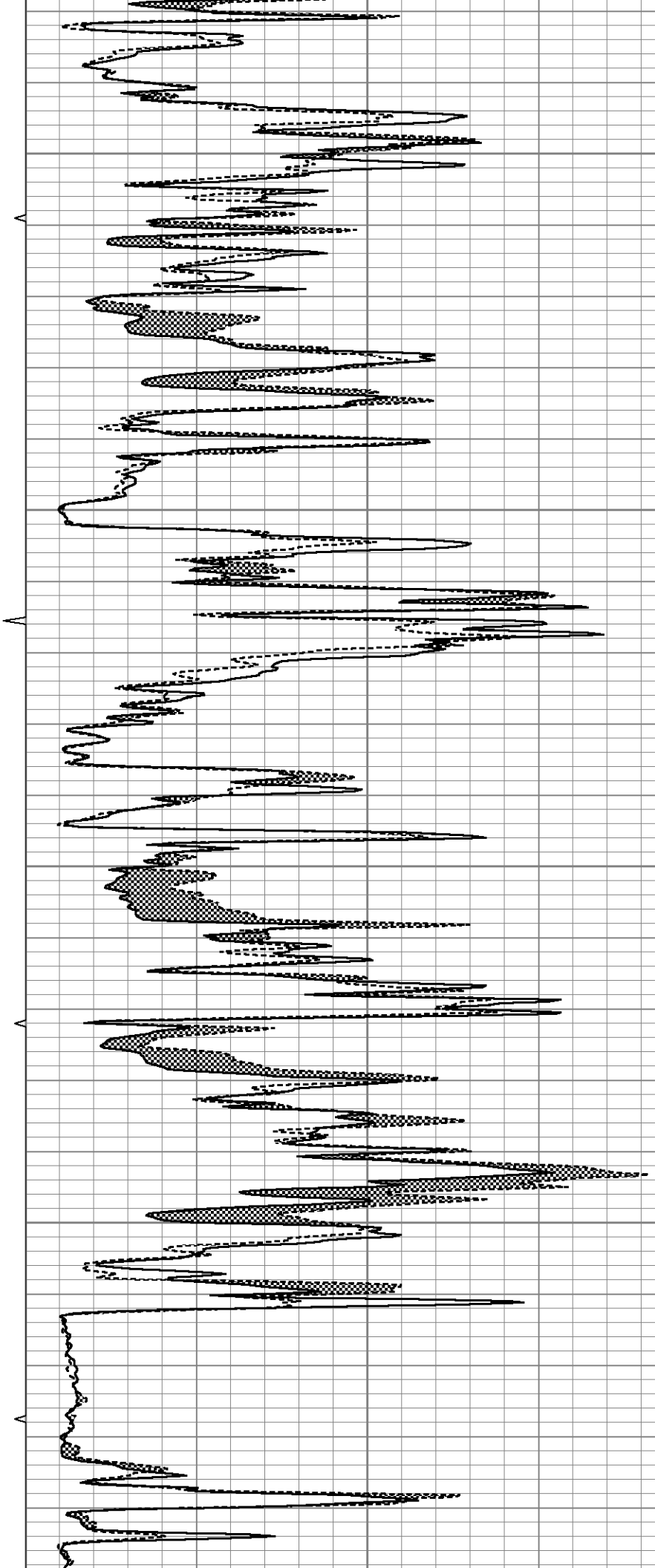


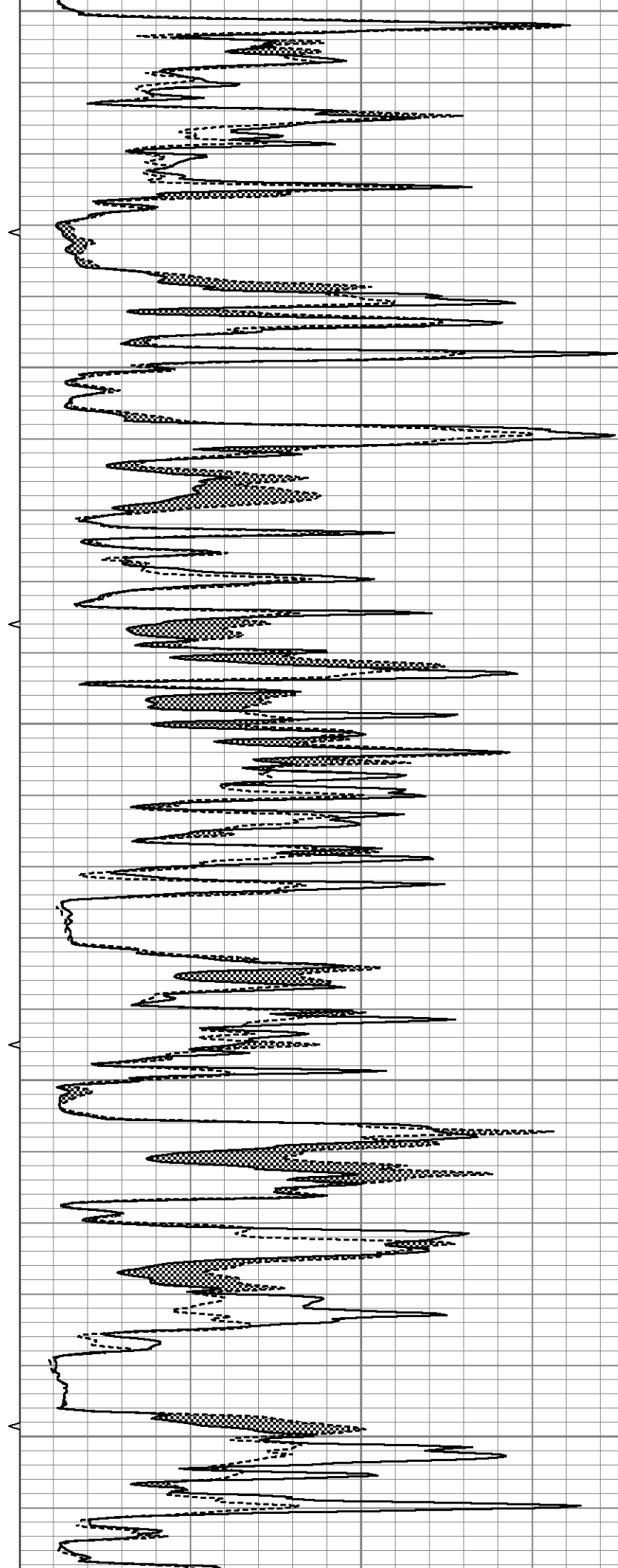
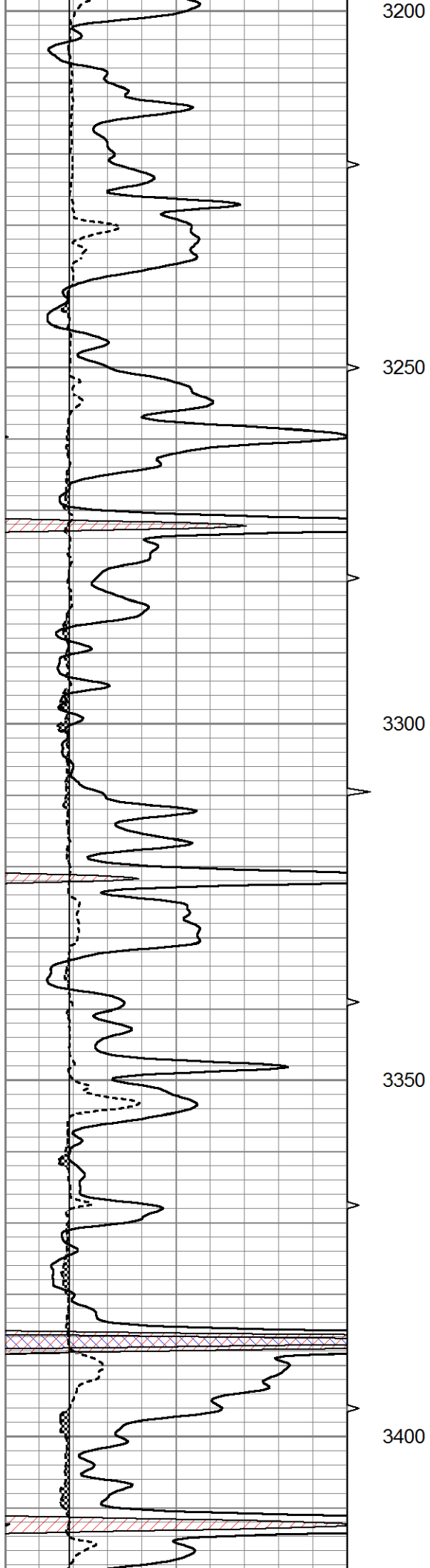
3000

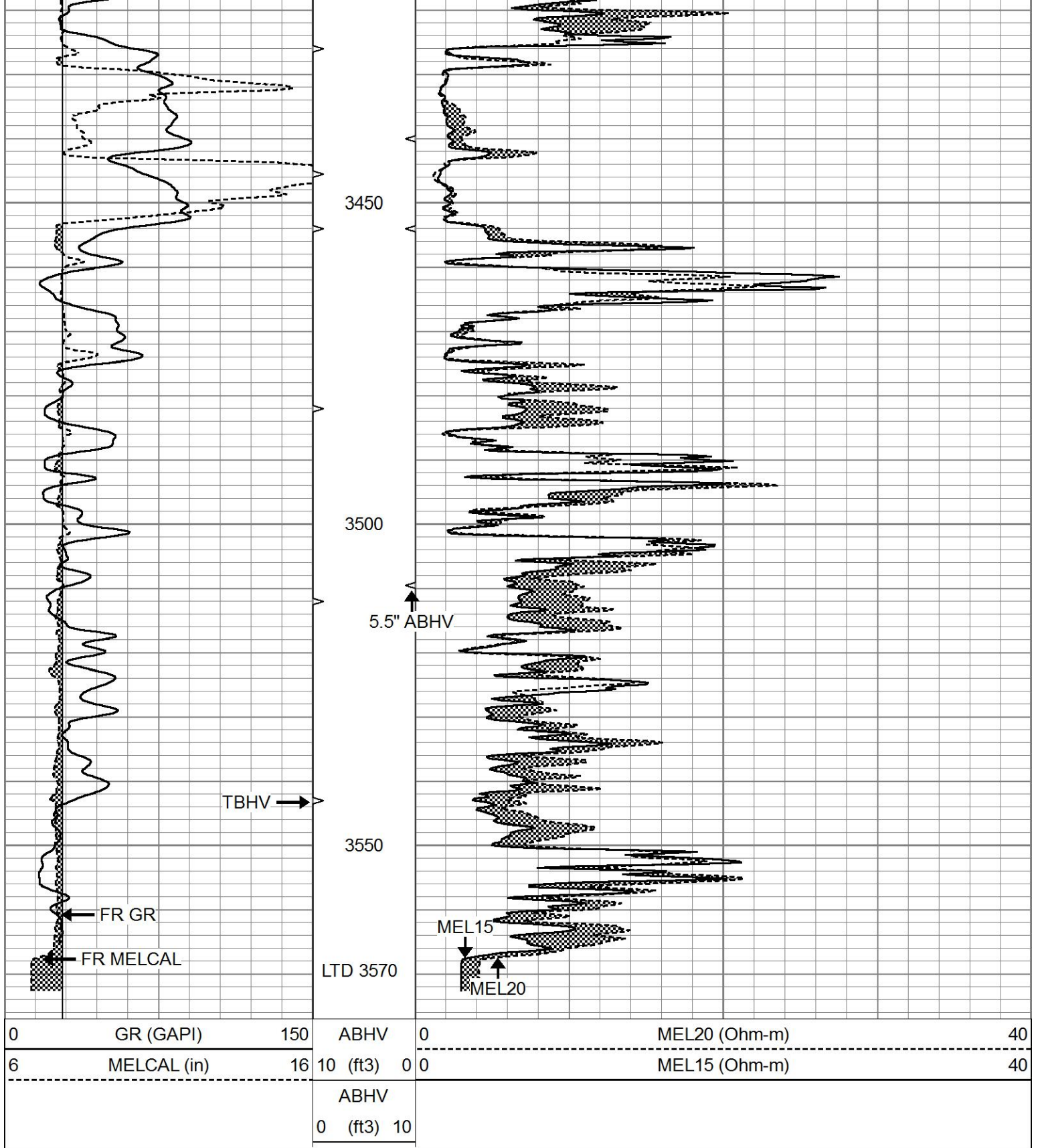
3050

3100

3150



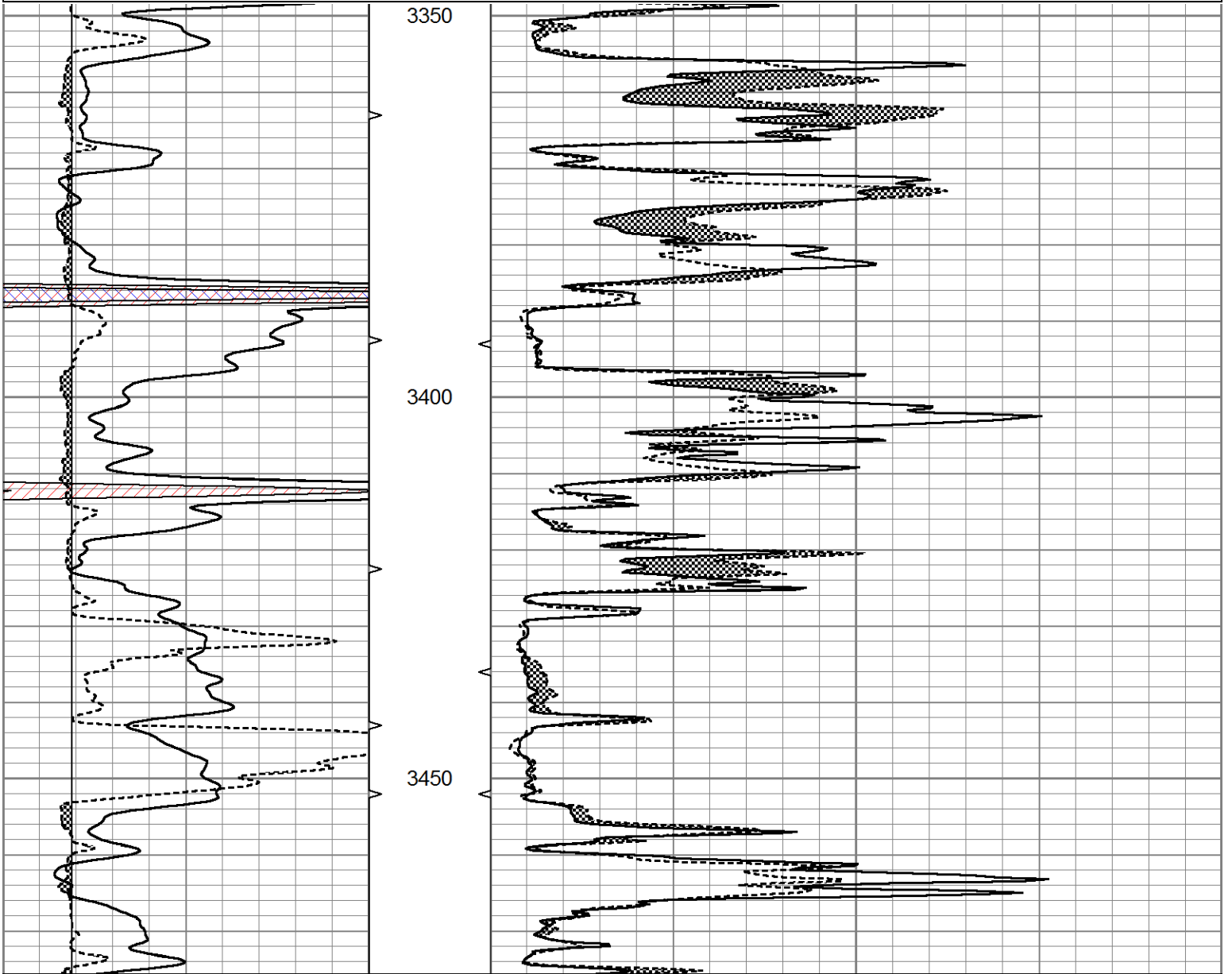




REPEAT SECTION

Database File 5578ddn.db
 Dataset Pathname pass5.2
 Presentation Format micro
 Dataset Creation Mon Jun 21 21:54:42 2021
 Charted by Depth in Feet scaled 1:240

0	GR (GAPI)	150	ABHV	0	MEL20 (Ohm-m)	40
6	MELCAL (in)	16	10 (ft3)	0 0	MEL15 (Ohm-m)	40
			ABHV			
			0 (ft3) 10			



0	GR (GAPI)	150	ABHV	0	MEL20 (Ohm-m)	40
6	MELCAL (in)	16	10 (ft3)	0 0	MEL15 (Ohm-m)	40
			ABHV			
			0 (ft3) 10			

Calibration Report

Database File 5578ddn.db
 Dataset Pathname pass6.1
 Dataset Creation Mon Jun 21 22:18:01 2021

MICRO Calibration Report

Serial Number: 070911
 Tool Model: ProbeN
 Performed: Thu May 27 15:07:55 2021

Caliper Calibration: Gain=3.434 Offset=2.849

References	Low Cal 8.000	High Cal 14.000
Readings	1.500	3.247
1.5" Calibration:	Gain=16.000	Offset=1.000
References	Low Cal 0.000	High Cal 20.000
Readings	0.001	1.291
2" Calibration:	Gain=45.000	Offset=-0.500
References	Low Cal 0.000	High Cal 20.000
Readings	0.003	1.103
Gamma Ray Calibration Report		
Serial Number:	070559	
Tool Model:	OPEN_GR	
Performed:	Mon Jun 21 21:42:11 2021	
Calibrator Value:	1.0	GAPI
Background Reading:	0.0	cps
Calibrator Reading:	1.0	cps
Sensitivity:	0.3500	GAPI/cps