



**COMPENSATED  
DENSITY / NEUTRON  
PE LOG**

**Company** GORE OIL COMPANY  
**Well** PRAIRIE HOMESTEAD #1-18  
**Field** WILDCAT  
**County** ROOKS **State** KANSAS

**Location:** API #: 15-163-24426-0000  
 1550' FNL & 1800' FWL  
 NE - NW - SE - NW  
 SEC 18 TWP 9S RGE 17W  
**Permanent Datum** GROUND LEVEL **Elevation** 2015  
**Log Measured From** KELLY BUSHING 8' A.G.L.  
**Drilling Measured From** KELLY BUSHING  
**Other Services** DILMEL  
**Elevation** K.B. 2023  
 D.F. 2021  
 G.L. 2015

Date	6/21/21
Run Number	ONE
Depth Driller	3573
Depth Logger	3570
Bottom Logged Interval	3546
Top Log Interval	2800
Casing Driller	8 5/8"@267'
Casing Logger	267
Bit Size	7 7/8"
Type Fluid in Hole	CHEMICAL MUD
Density / Viscosity	8.9/52
pH / Fluid Loss	10.5/5.8
Source of Sample	FLOWLINE
Rm @ Meas. Temp	.600@90F
Rmf @ Meas. Temp	.450@90F
Rmc @ Meas. Temp	.720@90F
Source of Rmf / Rmc	MEASUREMENT
Rm @ BHT	.482@112F
Time Circulation Stopped	2 HOURS
Time Logger on Bottom	8:00 P.M.
Maximum Recorded Temperature	112F
Equipment Number	922339
Location	HAYS, KANSAS
Recorded By	JEFF LUEBBERS
Witnessed By	CHUCK SCHMALTZ

<<< Fold Here >>>

All interpretations are opinions based on inferences from electrical or other measurements and we cannot and do not guarantee the accuracy or correctness of any interpretation, and we shall not, except in the case of gross or willful negligence on our part, be liable or responsible for any loss, costs, damages, or expenses incurred or sustained by anyone resulting from any interpretation made by any of our officers, agents or employees. These interpretations are also subject to our general terms and conditions set out in our current Price Schedule.

15-163-24426-0000 Comments

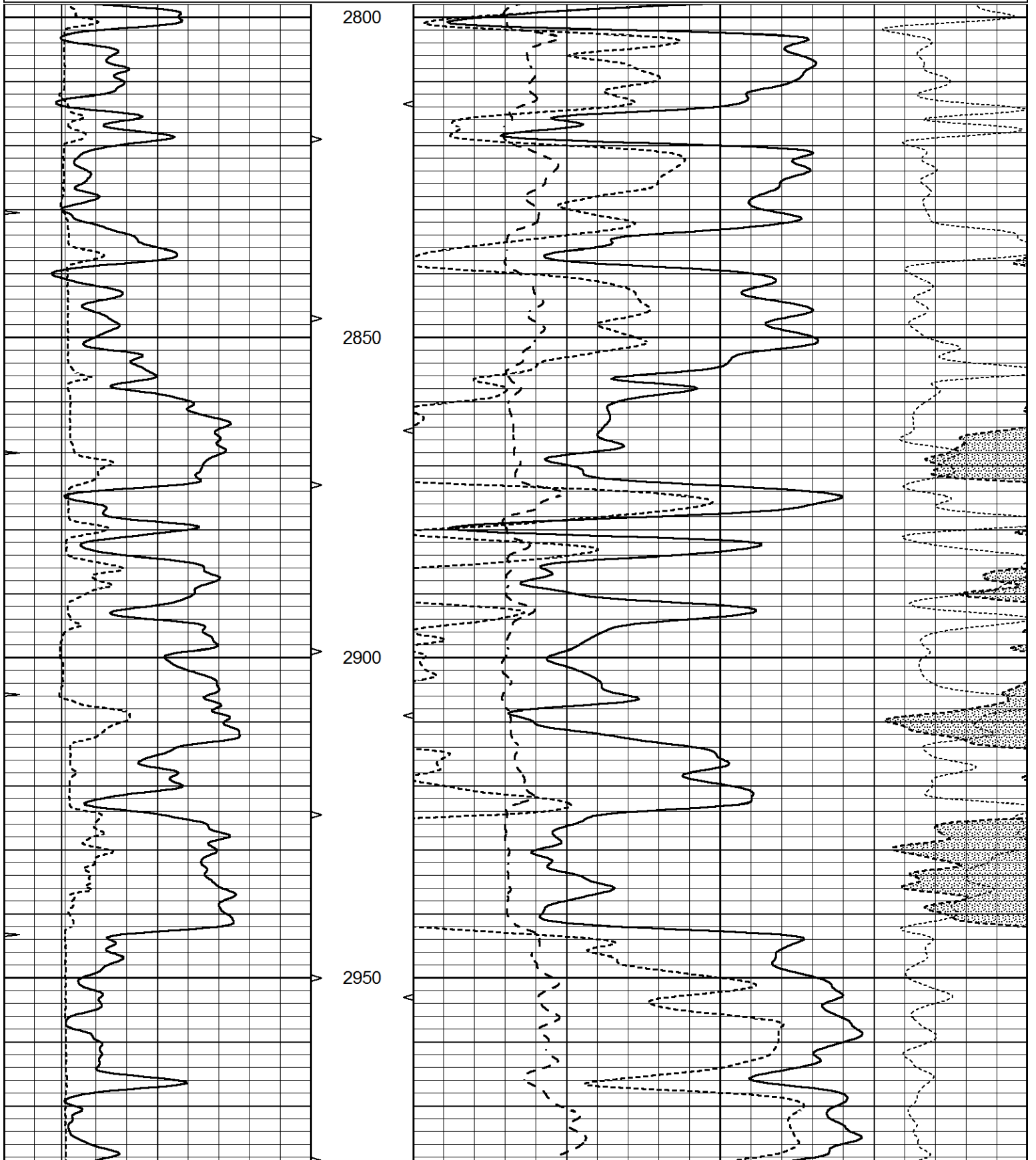
THANK YOU FOR USING ELI WIRELINE HAYS, KANSAS (785) 628-6395  
 DIRECTIONS  
 PLAINVILLE, KS. (4 WAY STOP) 3N. ON HWY 183, TO "U RD.", 1 1/2 E., S. INTO

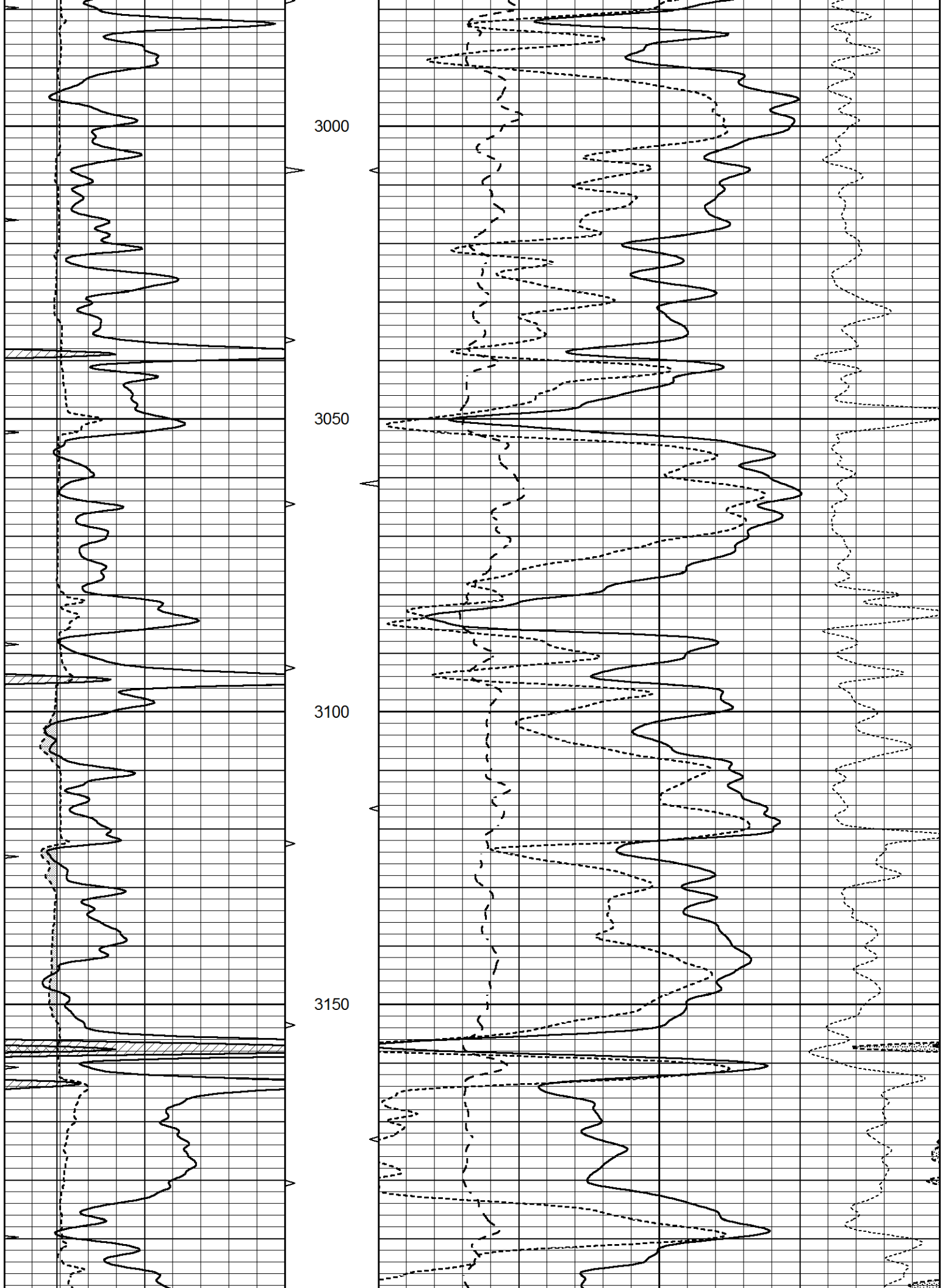


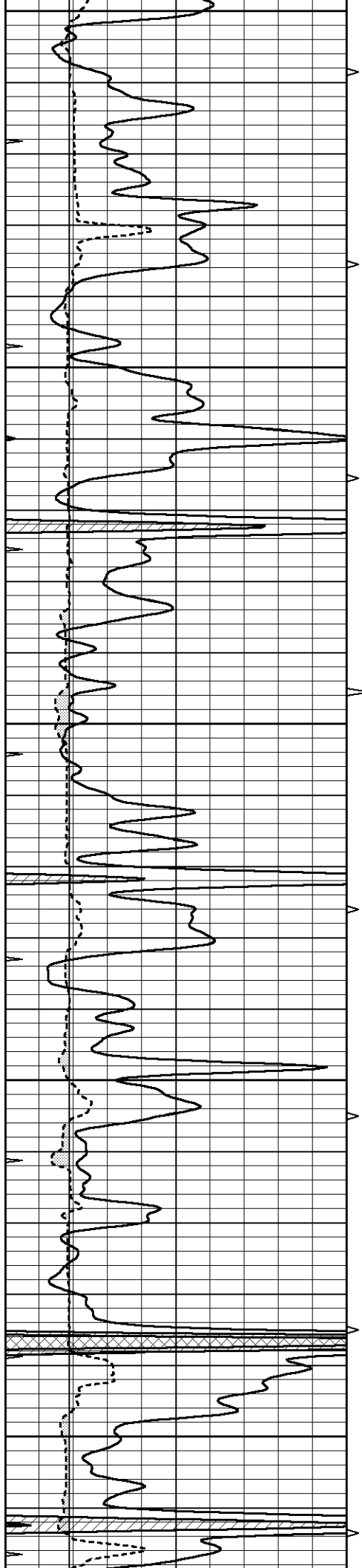
# MAIN SECTION

Database File 5578ddn.db  
 Dataset Pathname pass3.4M  
 Presentation Format ldt\_neu  
 Dataset Creation Mon Jun 21 21:50:45 2021  
 Charted by Depth in Feet scaled 1:240

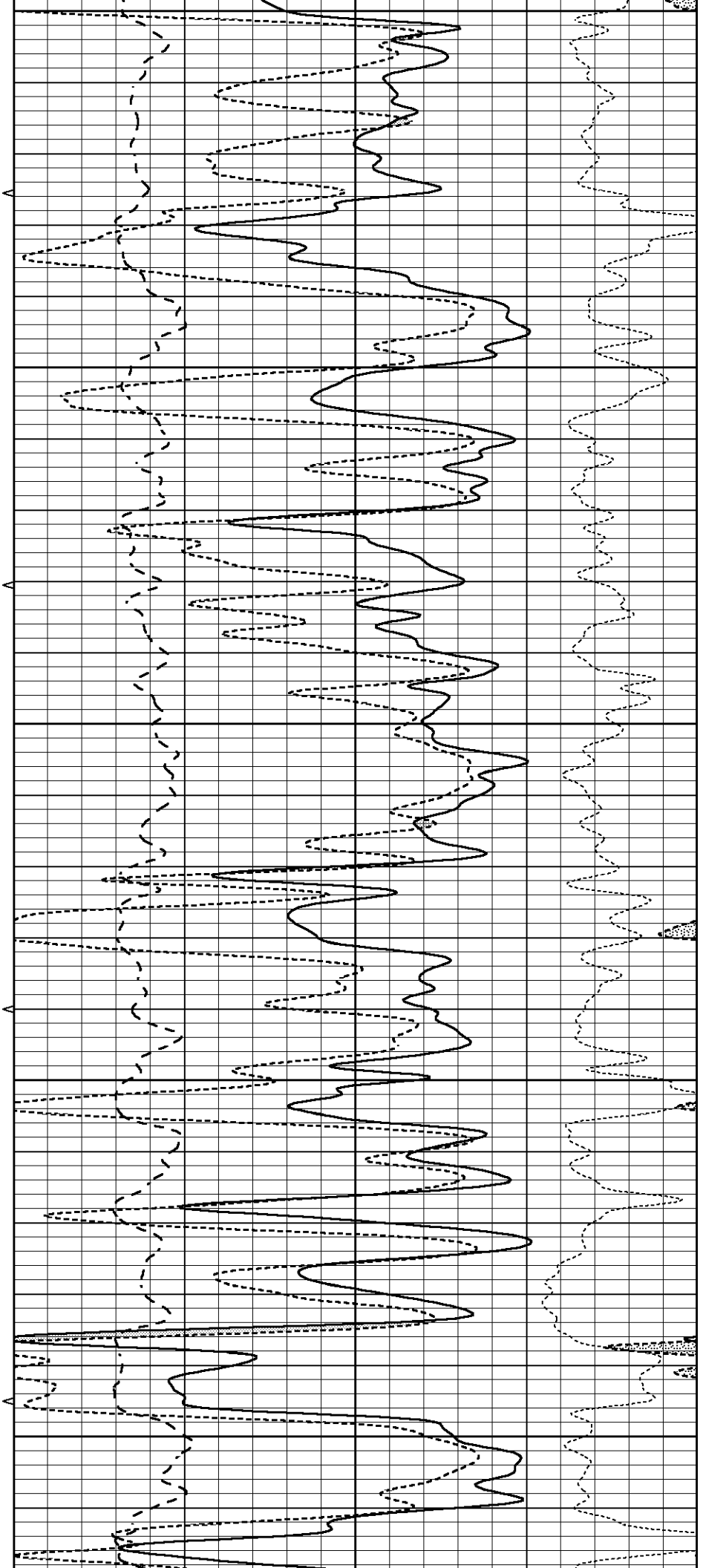
0	GAMMA RAY (GAPI)	150	ABHV	30	COMPENSATED DENSITY (pu)				-10	
6	CALIPER (in)	16	10 (ft3)	0	30	COMPENSATED NEUTRON (pu)				-10
0	MINMK	20	TBHV	0	PE	10	-0.25	CORRECTION (g/cc)	0.25	
			0 (ft3)	10						

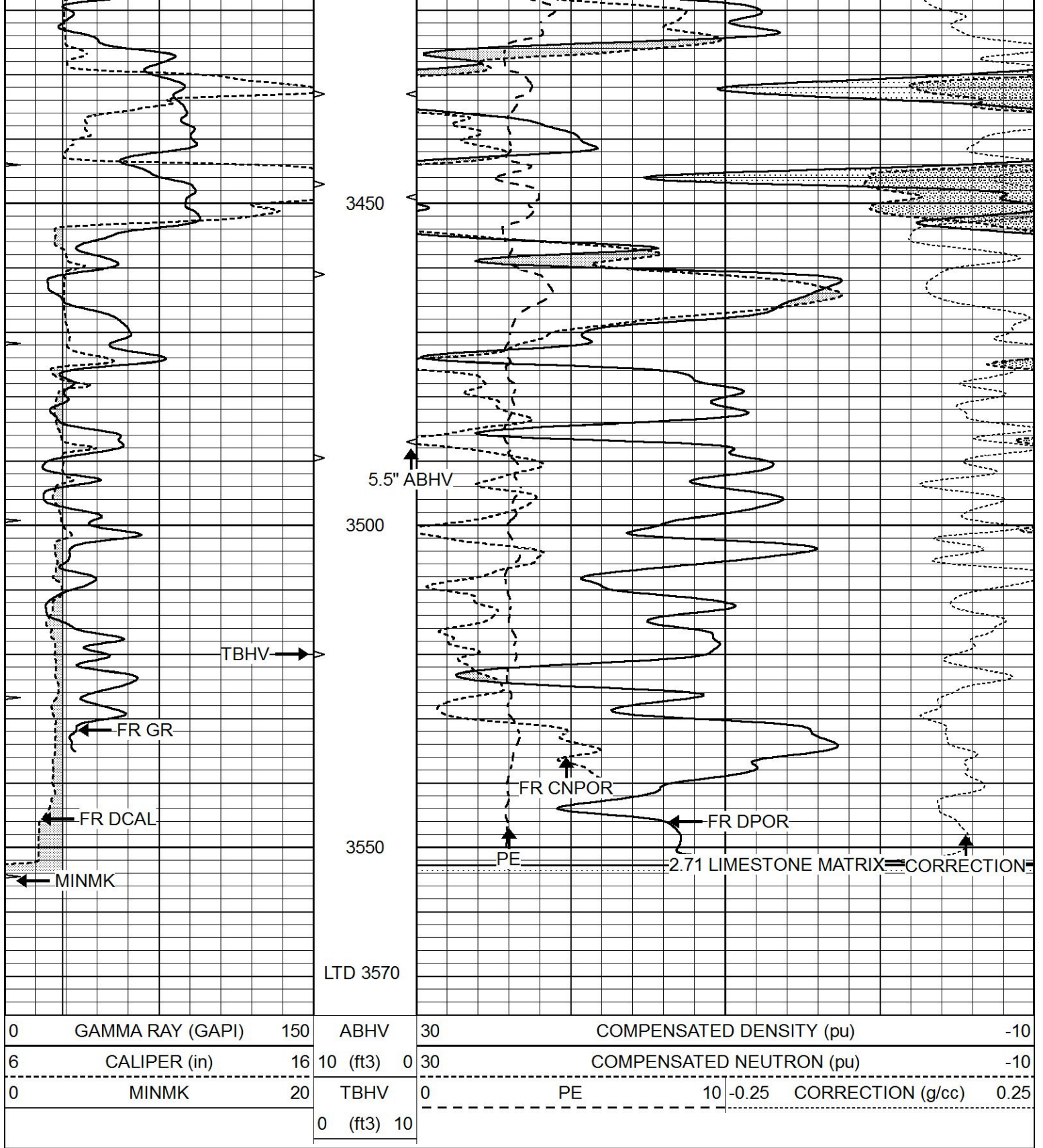






3200  
3250  
3300  
3350  
3400

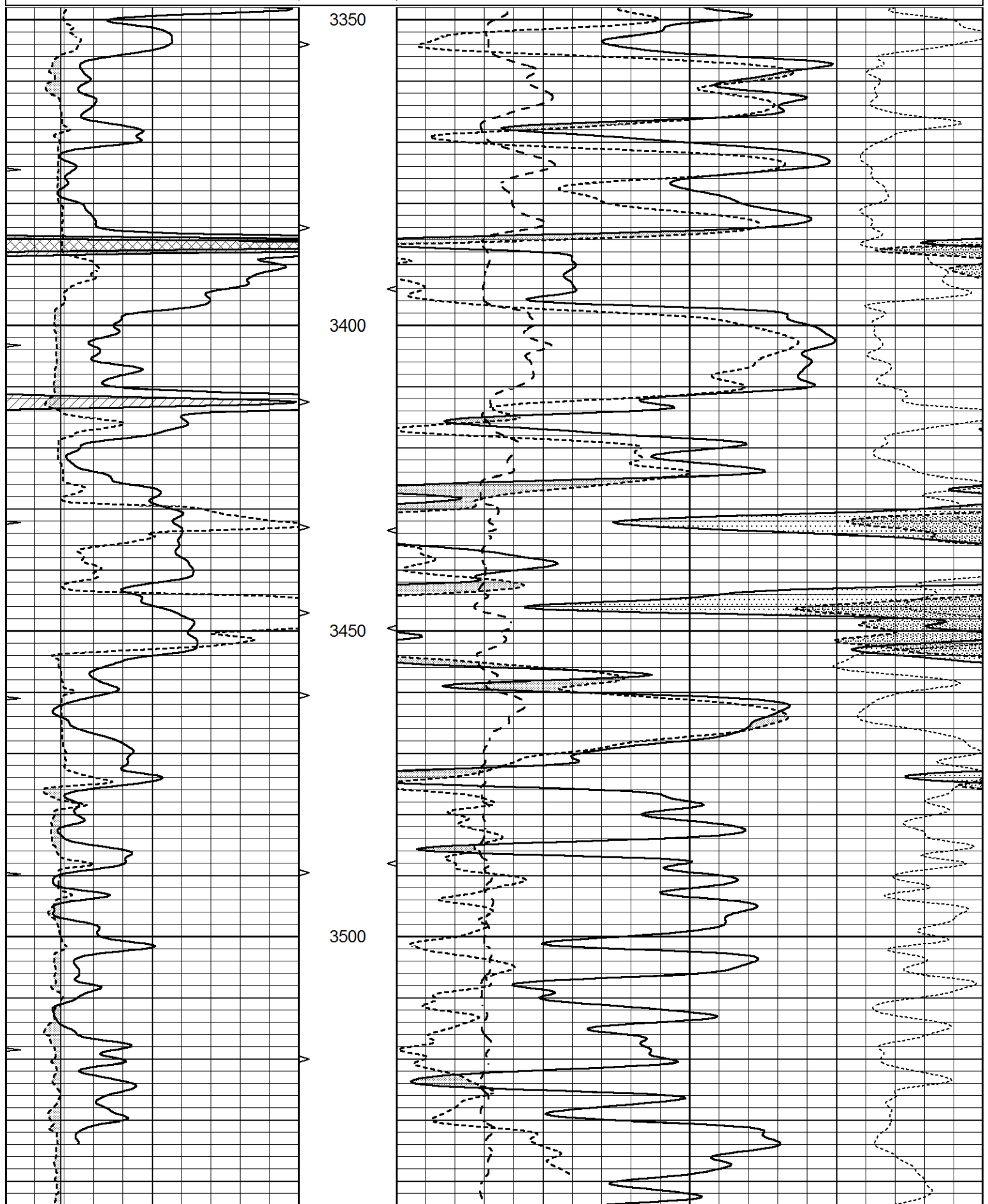


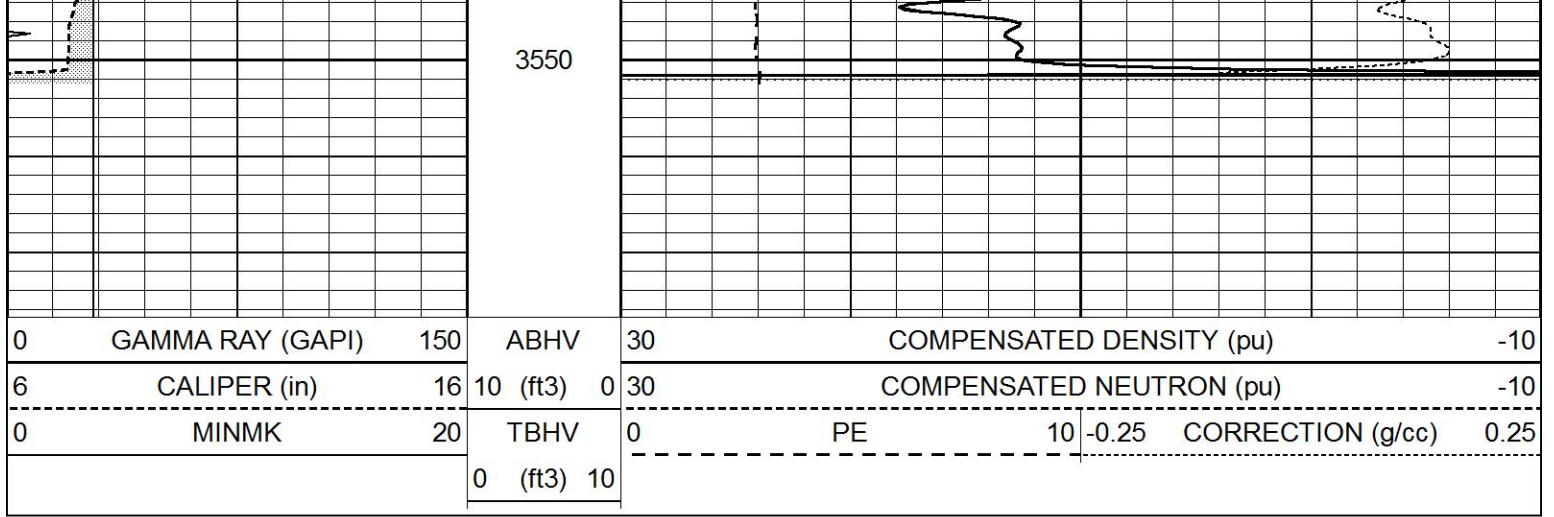


# REPEAT SECTION

Database File 5578ddn.db  
 Dataset Pathname pass2.1R  
 Presentation Format ldt\_neu  
 Dataset Creation Mon Jun 21 20:31:23 2021  
 Charted by Depth in Feet scaled 1:240

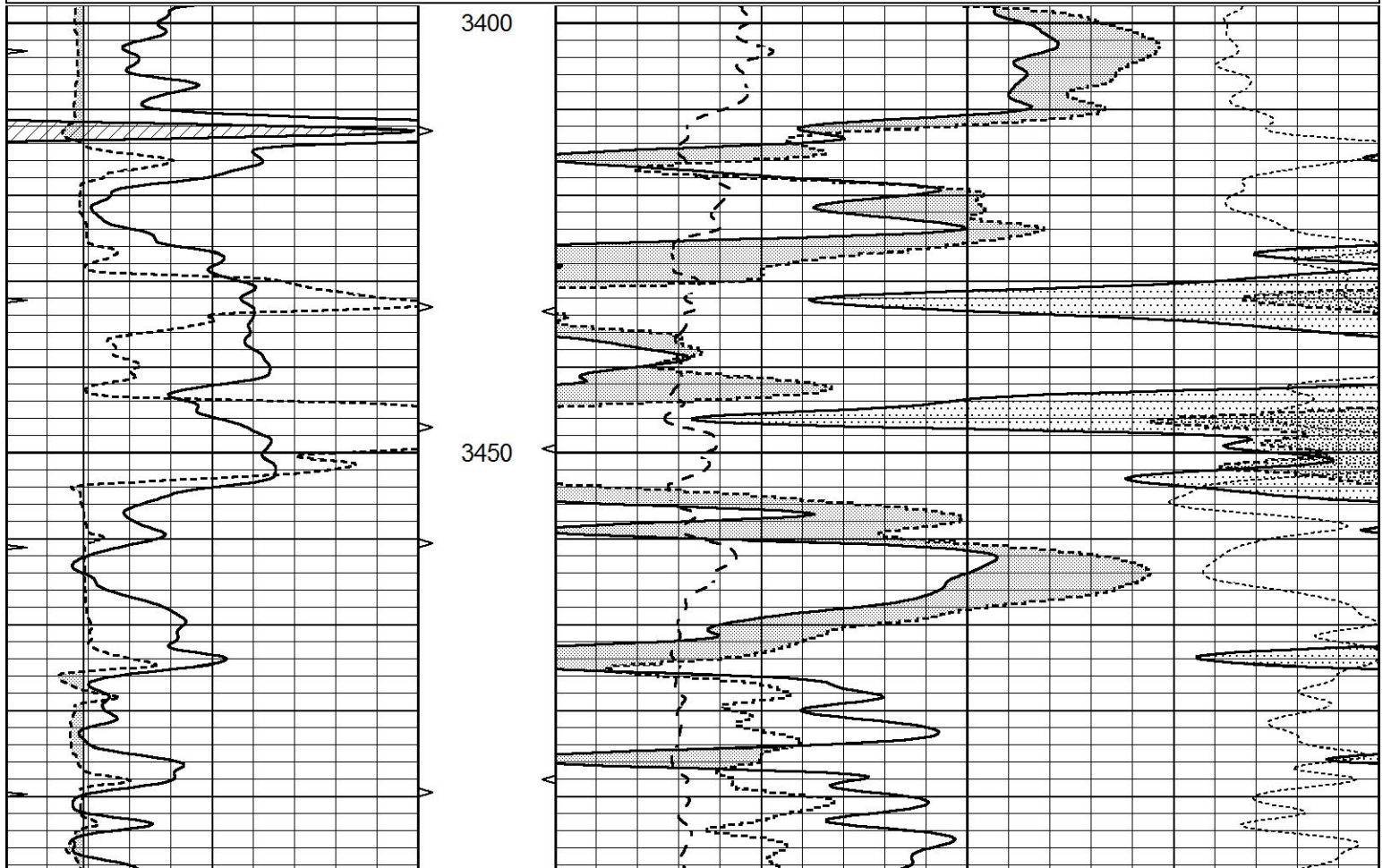
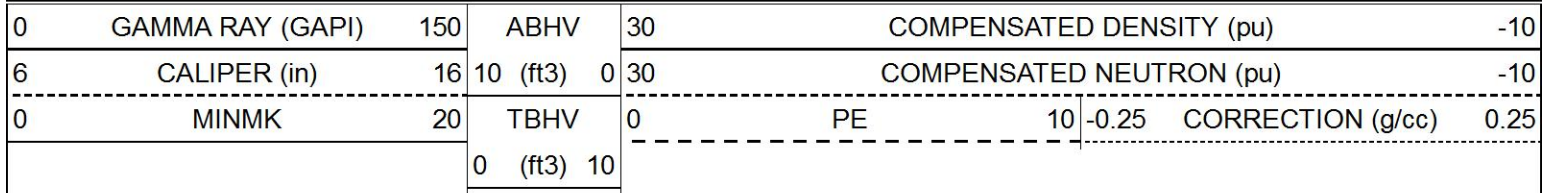
0	GAMMA RAY (GAPI)	150	ABHV	30	COMPENSATED DENSITY (pu)			-10
6	CALIPER (in)	16	10 (ft3) 0	30	COMPENSATED NEUTRON (pu)			-10
0	MINMK	20	TBHV	0	PE	10 -0.25	CORRECTION (g/cc)	0.25
			0 (ft3) 10					

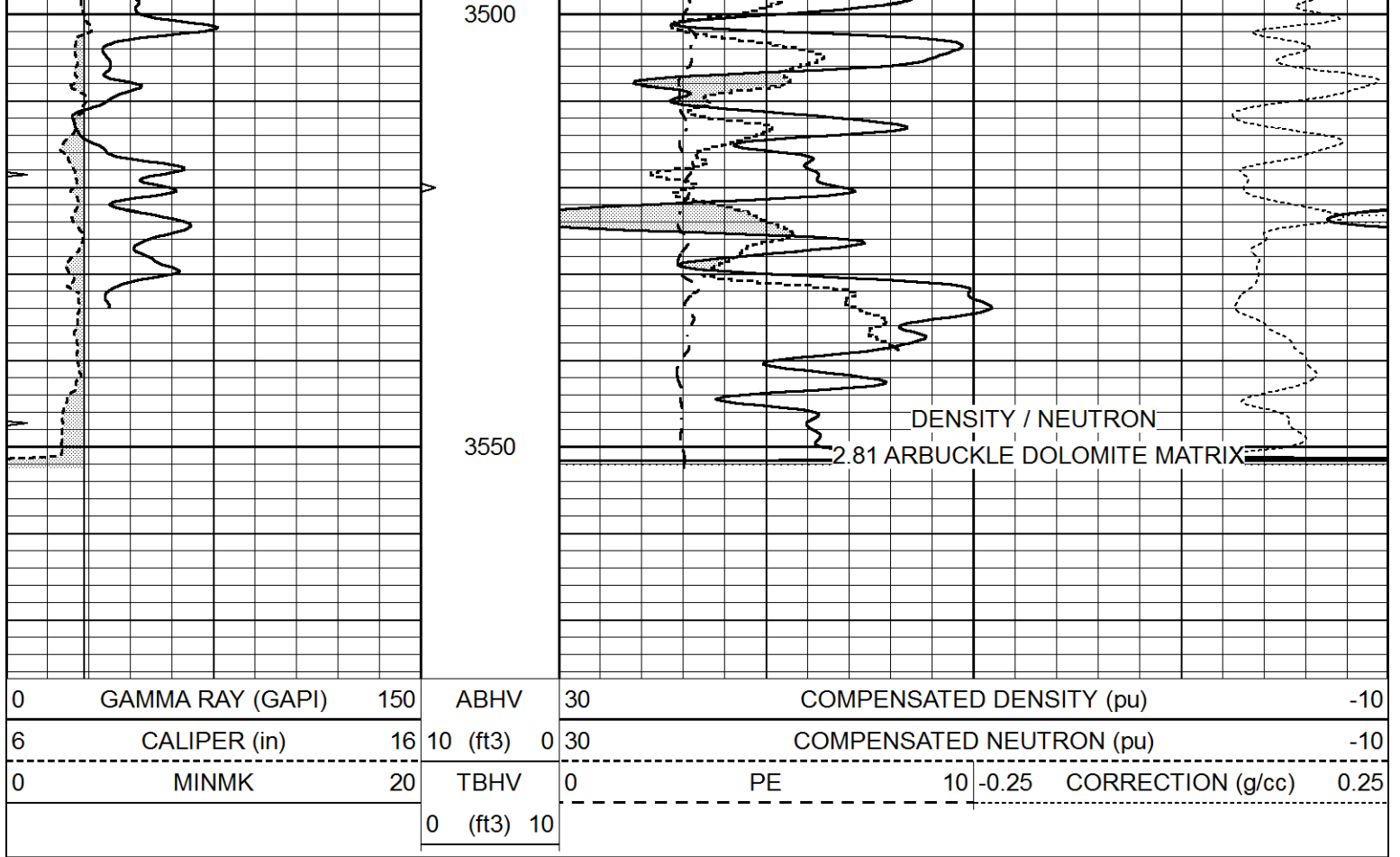




# DOLOMITE MATRIX

Database File 5578ddn.db  
 Dataset Pathname pass2.1D  
 Presentation Format ldt\_neu  
 Dataset Creation Mon Jun 21 20:30:35 2021  
 Charted by Depth in Feet scaled 1:240





### Calibration Report

Database File 5578ddn.db  
 Dataset Pathname pass3.4M  
 Dataset Creation Mon Jun 21 21:50:45 2021

### Dual Induction Calibration Report

Serial-Model: DIL4-GEAR  
 Surface Cal Performed: Mon Jun 21 19:54:04 2021  
 Downhole Cal Performed: Tue Sep 25 17:01:29 2001  
 After Survey Verification Performed: Sat Jun 11 16:07:12 2005

#### Surface Calibration

Loop:	Readings				References			Results	
	Air	Loop			Air	Loop		m	b
Deep	0.008	0.666	V	0.000	400.000	mmho/m	570.000	-10.000	
Medium	-0.003	0.769	V	0.000	462.500	mmho/m	560.000	-20.000	
Internal:	Zero	Cal		Zero	Cal		m	b	
Deep	0.013	0.651	V	0.000	400.000	mmho/m	627.541	-8.365	
Medium	0.020	0.754	V	0.000	462.500	mmho/m	630.311	-12.549	

#### Downhole Calibration

Internal:	Readings				References			Results	
	Zero	Cal			Zero	Cal		m	b
Deep	0.000	1.000	mmho/m	0.000	1.000	mmho/m	1.000	0.000	
Medium	0.000	1.000	mmho/m	0.000	1.000	mmho/m	1.000	0.000	
Shallow	2.525	0.026	V	500.000	2.000	Ohm-m	250.000	-4.000	

After Survey Verification

Internal:	Readings			Targets			Results	
	Zero	Cal		Zero	Cal		m'	b'
Deep	0.000	1.000	mmho/m	0.000	1.000	mmho/m	1.000	0.000
Medium	0.000	1.000	mmho/m	0.000	1.000	mmho/m	1.000	0.000
Shallow	0.000	0.000	Ohm-m	500.000	2.000	Ohm-m	1.000	0.000

Litho Density Calibration Report  
Serial: 004 Model: PRB

Master Calibration

Performed Tue May 18 11:02:48 2021

	Background	Magnesium	Aluminum	Aluminum+Fe	
Window 1	1187.1	10004.0	3142.5	2810.8	cps
Window 2	1084.9	8556.6	2749.3	2502.4	cps
Window 3	923.1	5129.8	1819.8	1719.3	cps
Window 4	263.5	263.6	259.7	262.8	cps
Long Space	0.0	7471.7	1664.4	1417.5	cps
Short Space	1.5	984.9	645.6	561.2	cps
Rho		1.7100	2.5900	0.0000	g/cc
Pe		2.0000	2.7500	5.7900	
Rib Angle	: 44.3	Rib Slope	: 0.976	Density/Spine Ratio	: 0.564
Spine Angle	: 74.3	Spine Slope	: 3.555	Spine Intercept	: -15.6

Before Survey Verification

Performed Wed Dec 31 18:00:00 1969

Window 1	0.0	0.0	0.0	0.0	cps
Window 2	0.0	0.0	0.0	0.0	cps
Window 3	0.0	0.0	0.0	0.0	cps
Window 4	0.0	0.0	0.0	0.0	cps
Long Space	0.0	0.0	0.0	0.0	cps
Short Space	0.0	0.0	0.0	0.0	cps
Measured Rho		0.0000	0.0000	0.0000	g/cc
Measured Correction		0.0000	0.0000	0.0000	g/cc
Measured Pe			0.0000	0.0000	

After Survey Verification

Performed Wed Dec 31 18:00:00 1969

Window 1	0.0	0.0	0.0	0.0	cps
Window 2	0.0	0.0	0.0	0.0	cps
Window 3	0.0	0.0	0.0	0.0	cps
Window 4	0.0	0.0	0.0	0.0	cps
Long Space	0.0	0.0	0.0	0.0	cps
Short Space	0.0	0.0	0.0	0.0	cps
Measured Rho		0.0000	0.0000	0.0000	g/cc
Measured Correction		0.0000	0.0000	0.0000	g/cc
Measured Pe			0.0000	0.0000	

Compensated Neutron Calibration Report

Serial Number: 070808PMC  
Tool Model: NABORS

PRE-SURVEY VERIFICATION

Detector	Readings	Measured	Target
Short Space	cps		
Long Space	cps	pu	pu

POST-SURVEY VERIFICATION

Detector	Readings	Measured	Target
Short Space	cps		
Long Space	cps	pu	pu

Gamma Ray Calibration Report

Serial Number:	070558		
Tool Model:	OPEN_GR		
Performed:	Fri Apr 16 13:57:16 2021		
Calibrator Value:	1.0	GAPI	
Background Reading:	0.0	cps	
Calibrator Reading:	1.0	cps	
Sensitivity:	0.3000	GAPI/cps	