



**GAMMA RAY
CCL/RADIAL
CEMENT BOND
LOG**

Company JONES OIL EXPLORATION, LLC
Well BUTCHER # 26
Field PERU-SEDAN
County CHAUTAUQUA
State KANSAS

Company JONES OIL EXPLORATION, LLC

Well BUTCHER # 26

Field PERU SEDAN

County CHAUTAUQUA State KANSAS

Location: API #: 15-019-27669

SW SE NE NE

SEC 25 TWP 33S RGE 10E

Permanent Datum GL Elevation 891'

Log Measured From GL K.B. ---

Drilling Measured From GL D.F. ---

Other Services

Date 04-05-2021

Run Number ONE

Depth Driller 1350'

Depth Logger 1331'

Bottom Logged Interval 1329'

Top Log Interval SURFACE

Open Hole Size 6.75"

Type Fluid WATER

Density / Viscosity ---

Max. Recorded Temp. ---

Estimated Cement Top SURFACE

Time Well Ready ON ARRIVAL

Time Logger on Bottom 11:30 AM

Equipment Number OW3

Location HOMINY, OKLAHOMA

Recorded By B. MARSHALL

Witnessed By MR. JONES

Borehole Record				Tubing Record			
Run Number	Bit	From	To	Size	Weight	From	To
Casing Record							
Surface String				8.625"	WGUF1	Top SURFACE	Bottom 48'
Prot. String							
Production String				4.5"			
Water Meter							

<<< Fold Here >>>

All interpretations are opinions based on inferences from electrical or other measurements and we cannot and do not guarantee the accuracy or correctness of any interpretation, and we shall not, except in the case of gross or willful negligence on our part, be liable or responsible for any loss, costs, damages, or expenses incurred or sustained by anyone resulting from any interpretation made by any of our officers, agents or employees. These interpretations are also subject to our general terms and conditions set out in our current Price Schedule.

Comments

FILE #5794-OW3RBL JONES OIL EXPLORATION, LLC BUTCHER # 26

THANK YOU FOR USING OSAGE WIRELINE!



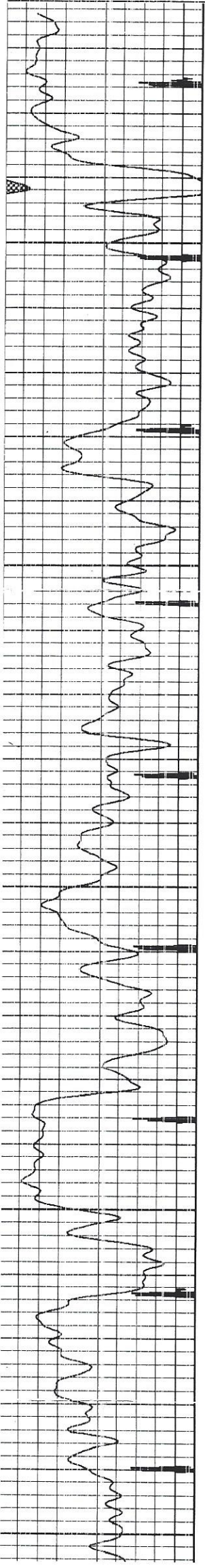
GR/CCL/RAD

Database File 5794-ow3rbl jones oil exploration, llc butcher 26.db
Dataset Pathname pass1
Presentation Format Ow4 crbt
Dataset Creation Mon Apr 05 11:33:51 2021
Charted by Depth in Feet scaled 1:240

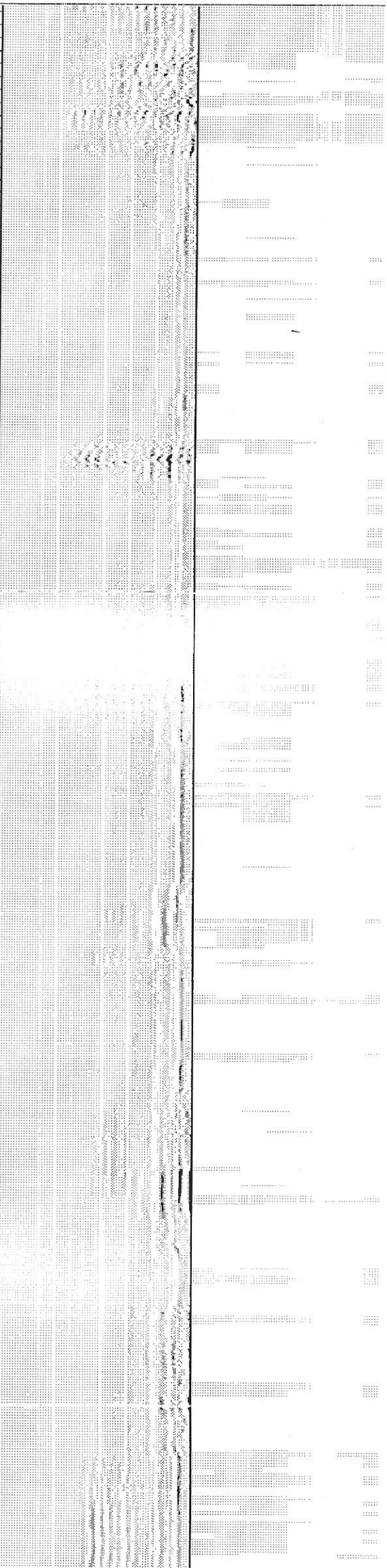
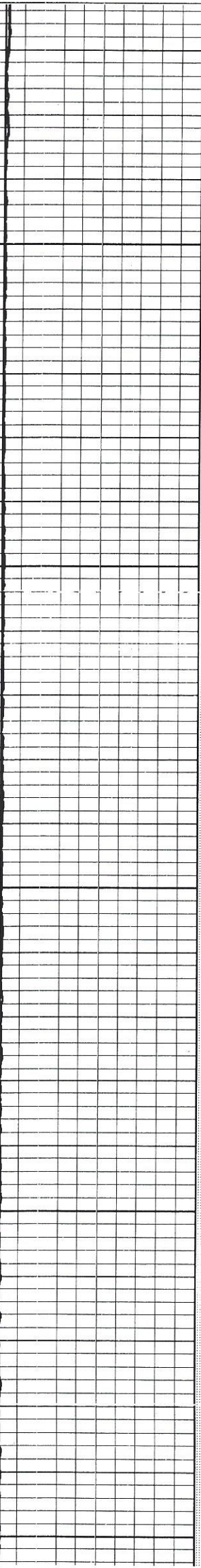
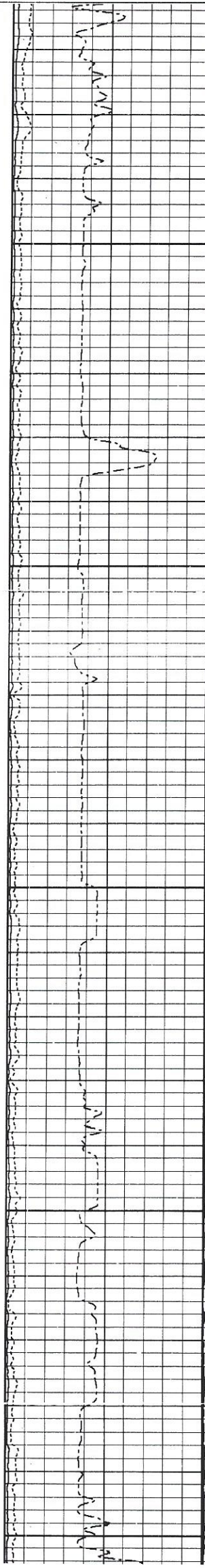
0	Casing Collar	-4.5	0	Pipe Bond (mV)	100	0	Sector 1	100	Variable Density	1	Radial Map	8
	Gamma Ray			Pipe Bond x5		0	Sector 2	100	(usec)	1200		
	(GAPI)	150	0	(mV)	30	0	Sector 3	100				
				Travel Time		0	Sector 4	100				
			1200	(usec)	220	0	Sector 5	100				
						0	Sector 6	100				

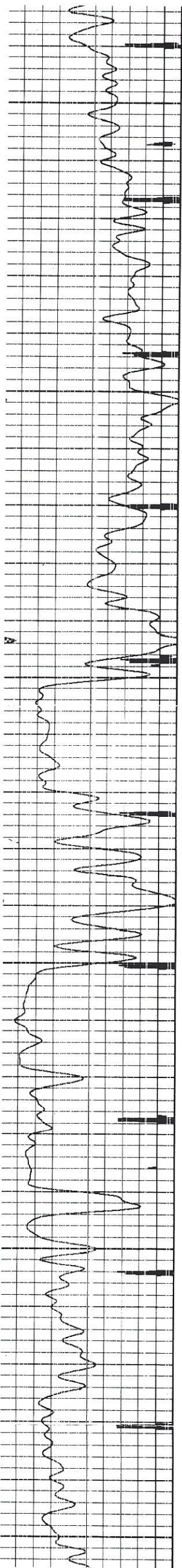
0 (GAPI) 150

0	(mV)	30	0	Sector 3	100
	Travel Time		0	Sector 4	100
1200	(usec)	220	0	Sector 5	100
			0	Sector 6	100
			0	Sector 7	100
			0	Sector 8	100

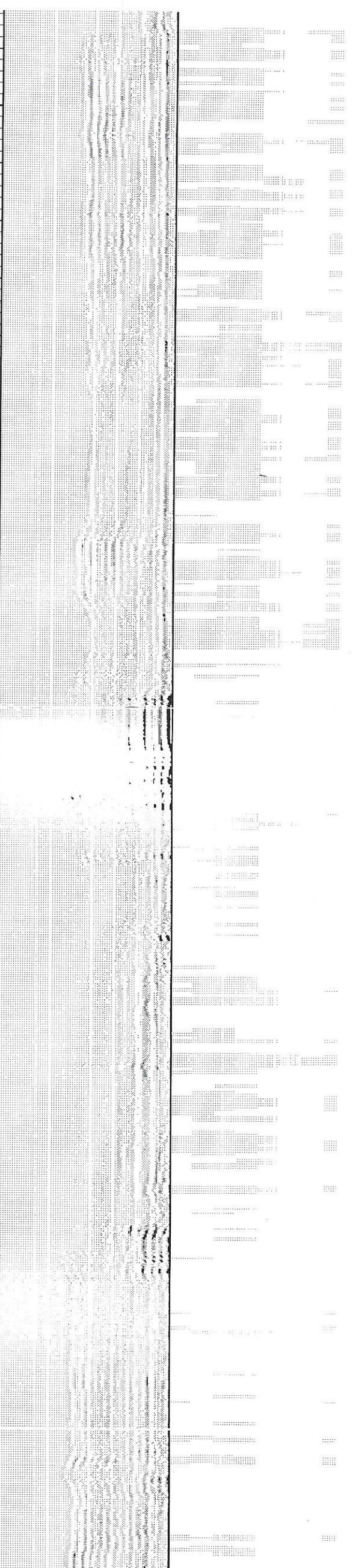
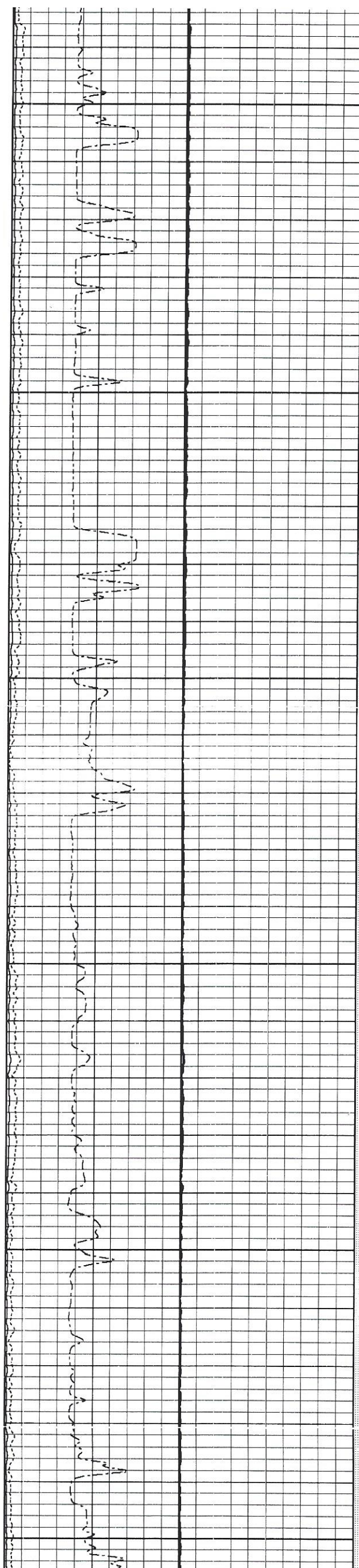


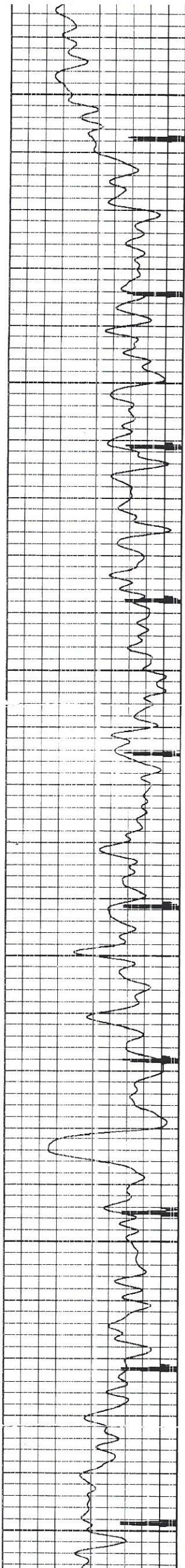
50
100
150
200
250



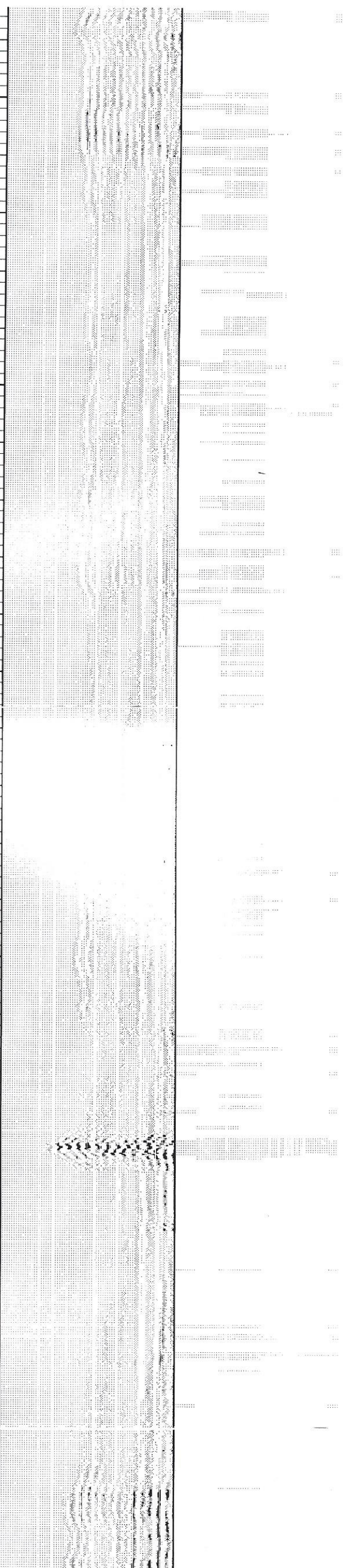
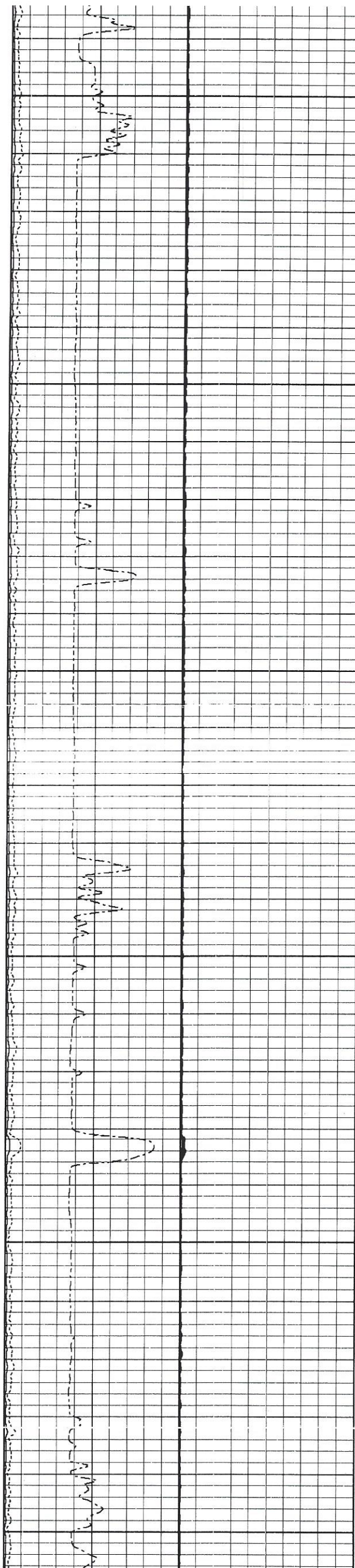


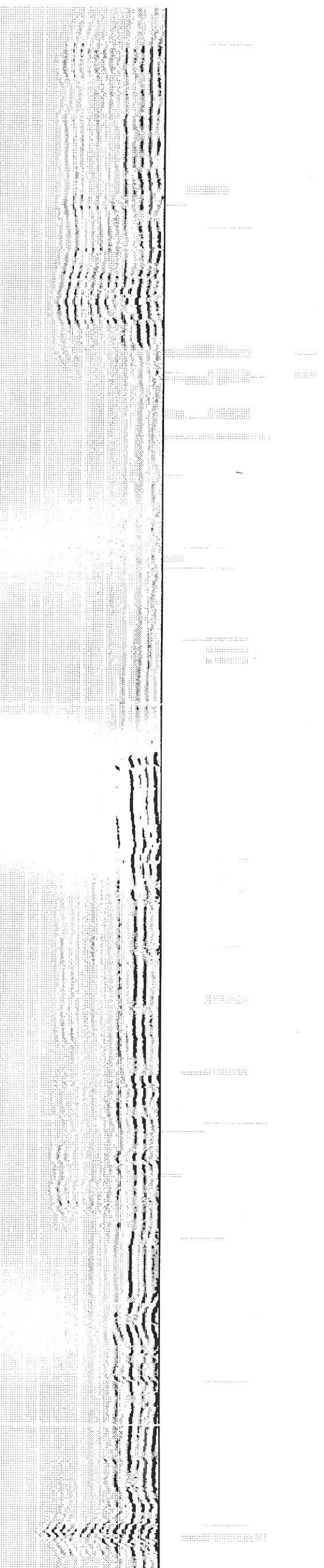
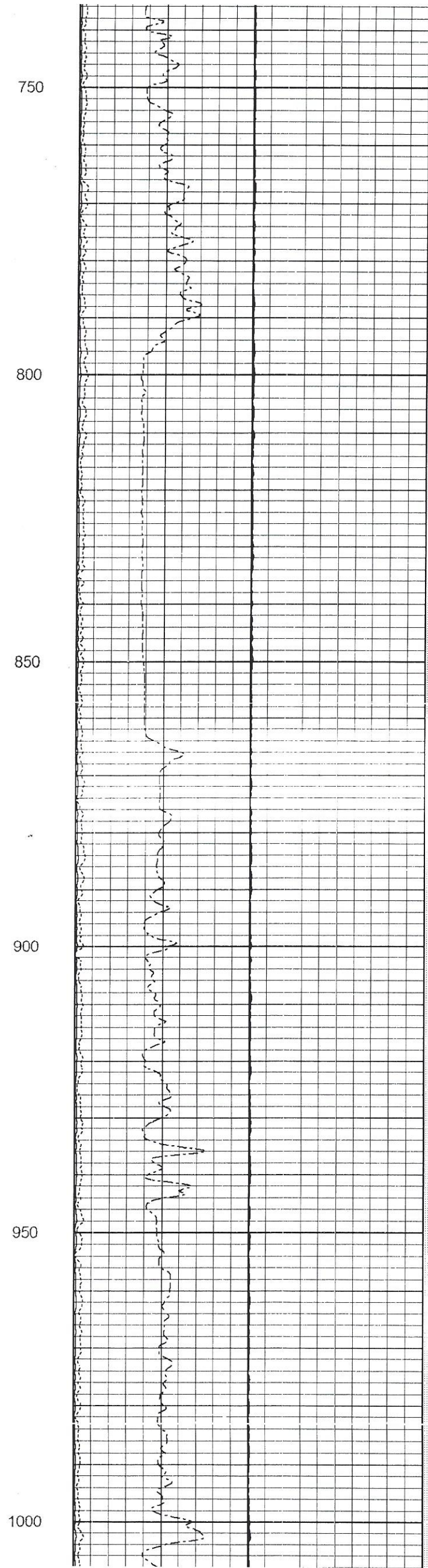
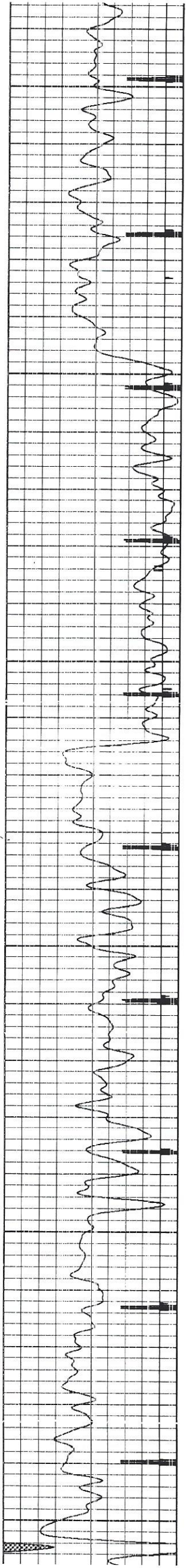
250
300
350
400
450
500

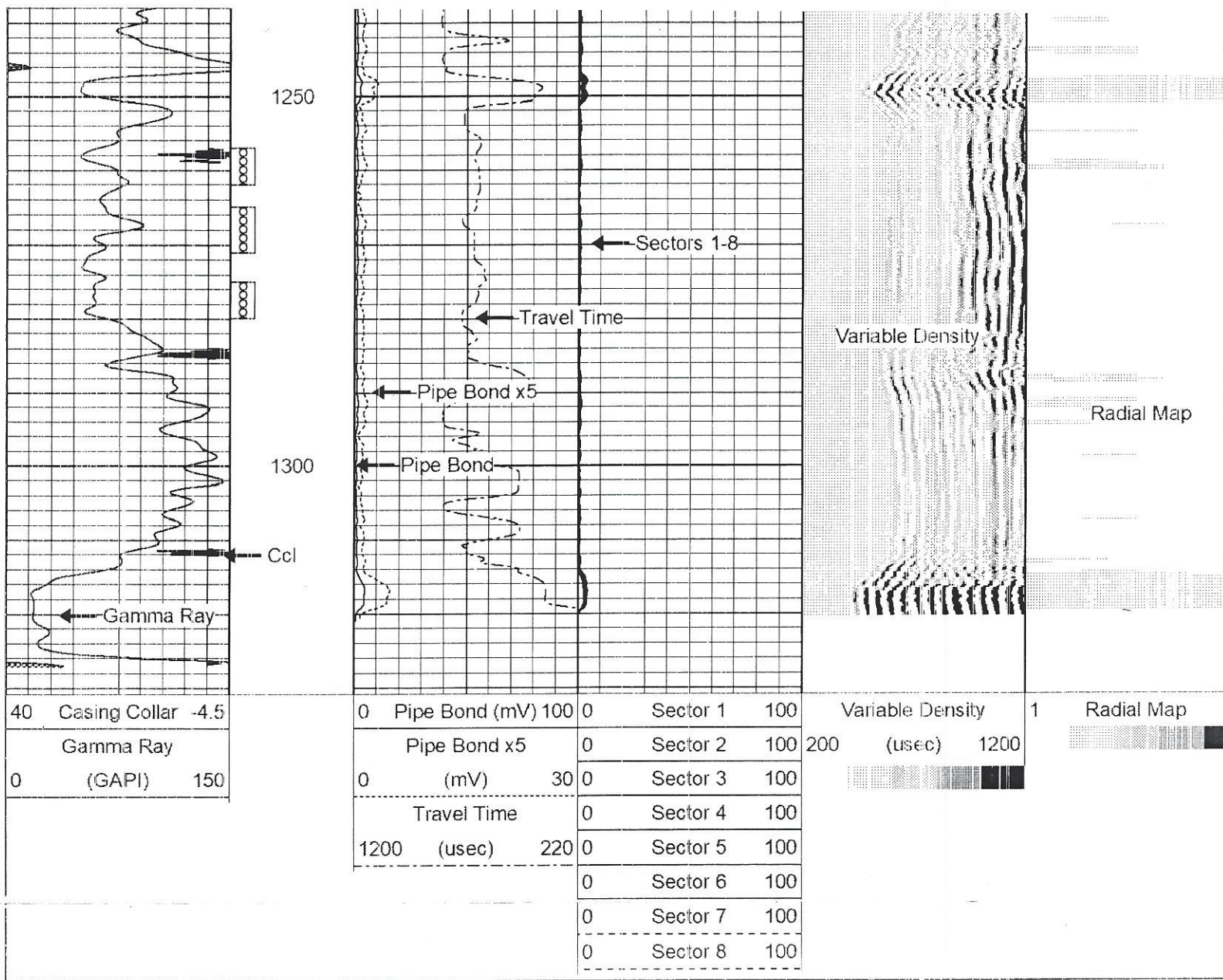




500
550
600
650
700
750







Sensor	Offset (ft)	Schematic	Description	Length (ft)	O.D. (in)	Weight (lb)	
			CENT-SDSCENT Centralizer	3.00	3.25	20.00	
			CHD-STNDRD Standard Cable Head	1.00	1.69	10.00	
WVFS8	11.73			RBT-Probe (070566) Prototype Probe Radii Bond Tool with Digital Telemetry	8.75	2.75	90.00
WVFS7	11.73						
WVFS6	11.73						
WVFS5	11.73						
WVFS4	11.73						
WVFS3	11.73						
WVFS2	11.73						
WVFS1	11.73						
WVFCAL	11.73		CENT-SDSCENT Centralizer	3.00	3.25	20.00	
WVF3FT	11.73						
WVF5FT	10.73						
CCL	3.63	GR_CCL-PRB275SINGLEPIN (050903) 2 3/4" GRCCCL SINGLE PIN	4.54	2.75	57.00		
GR	0.89						

Dataset: 5794-ow3rbi jones oil exploration, lic butcher 26.db: field/well/run1/pass1
 Total length: 20.29 ft
 Total weight: 197.00 lb
 O.D.: 3.25 in