



MIDWEST WIRELINE

DUAL COMP POROSITY LOG

Company TDI, Inc.
 Well Schuster Unit #1
 Field Unnamed
 County Ellis State Kansas

Company TDI, Inc.
 Well Schuster Unit #1
 Field Unnamed
 County Ellis
 State Kansas

Location: API #: 15-051-27000-00-00
 780' FSL & 2535' FWL
 SEC 1 TWP 13S RGE 20W
 Permanent Datum Ground Level Elevation 2103'
 Log Measured From Kelly Bushing
 Drilling Measured From Kelly Bushing
 Other Services
 DIL/MEL
 K.B. 2113'
 D.F. N/A
 G.L. 2103'

Date	6/16/2021						
Run Number	One						
Type Log	CNL/CDL						
Depth Driller	3900'						
Depth Logger	3898'						
Bottom Logged Interval	3857'						
Top Logged Interval	3000'						
Type Fluid In Hole	Chemical						
Salinity, PPM CL	5000						
Density	9.3						
Level	Full						
Max. Rec. Temp. F	115						
Operating Rig Time	3 Hours						
Equipment -- Location	P-24 HAYS						
Recorded By	D. Schmidt						
Witnessed By	Tom Denning						
Borehole Record							
Run No.	Bit	From	To	Size	Wgt.	From	To
One	12.25"	0'	214'	8.625"	23#	0'	214'
Two	7.875"	214'	TD				
Casing Record							

<<< Fold Here >>>

All interpretations are opinions based on inferences from electrical or other measurements and Midwest Wireline Services, LLC cannot and does not guarantee the accuracy or correctness of any interpretation, and Midwest Wireline Services, LLC will not be liable or responsible for any loss, costs, damages, or expenses incurred or sustained by anyone resulting from any interpretation made by any of our officers, agents or employees.

Comments

N/A DENOTES NOT AVAILABLE OR NON-APPLICABLE.

Ellis,
 3 1/2 East on 6th St. (Feedlot),
 North into

Log Measured From: Kelly Bushing 10 Ft. Above Permanent Datum

THANK YOU FOR USING MIDWEST WIRELINE LLC
 785-625-3858

Your Midwest Wireline Crew		This Log Record Was Witnessed By	
Engineer: D. Schmidt	Operator:	Primary Witness: Tom Denning	Secondary Witness: Herb Deines
Operator:	Operator:	Secondary Witness:	Secondary Witness:
Operator:		Secondary Witness:	

Sensor	Offset (ft)	Schematic	Description	Length (ft)	O.D. (in)	Weight (lb)	
GR	44.50		GR-M&W (233-M&W)	3.00	3.50	50.00	
CNLSC CNSSC	41.40 40.65		CNT-M&W (207-MW)	5.50	3.50	100.00	
LSD DCAL SSD	32.35 32.33 31.85		CDL-M&W (817-947)	8.50	4.00	250.00	
			ML-PSI UDM ML (UDM-01) Stackable Microlog Tools	11.50	4.00	215.00	
MCAL MI MN	20.87 20.87 20.87						
RLL3F RLL3	15.80 15.80						
CILD	8.00			DIL-PSI HIGH TEMP (952-828)	18.50	3.50	220.00
CILM	4.70						
SP	0.20						

Dataset: tdj_schuster unit 1.db: field/well/Stkml/pass4.1
 Total length: 47.00 ft
 Total weight: 835.00 lb
 O.D.: 4.00 in

Log Variables

DatabaseC:\ProgramData\Warrior\Data\tdi_schuster unit 1.db
 Dataset field/well/Stkml/pass4.1/_vars_

Top - Bottom

A	BOREID in	BOTTEMP degF	CASEOD in	CASETHCK in	FLUIDDEN g/cc	M	MATRXDEN g/cc
1	7.875	115	5.5	0	1	2	2.71
NPORSEL	PERFS	SNDERR mmho/m	SNDERRM mmho/m	SPSHIFT mV	SRFTEMP degF	SZCOR	TDEPTH ft
Limestone	No	0	0	325	80	Off	3898

Variable Description

A : Cement Factor (a)
 BOREID : Borehole I.D.
 BOTTEMP : Bottom Hole Temperature
 CASEOD : Casing O.D.
 CASETHCK : Casing Thickness
 FLUIDDEN : Fluid Density
 M : Cement Exp (m)
 MATRXDEN : Matrix Density

NPORSEL : Neutron Porosity Curve Select
 PERFS : Perforation Flag
 SNDERR : Deep Sonde Error Correction
 SNDERRM : Medium Sonde Error Correction
 SPSHIFT : S.P. Baseline Offset
 SRFTEMP : Surface Temperature
 SZCOR : CN Size Cor. ?
 TDEPTH : Total Depth



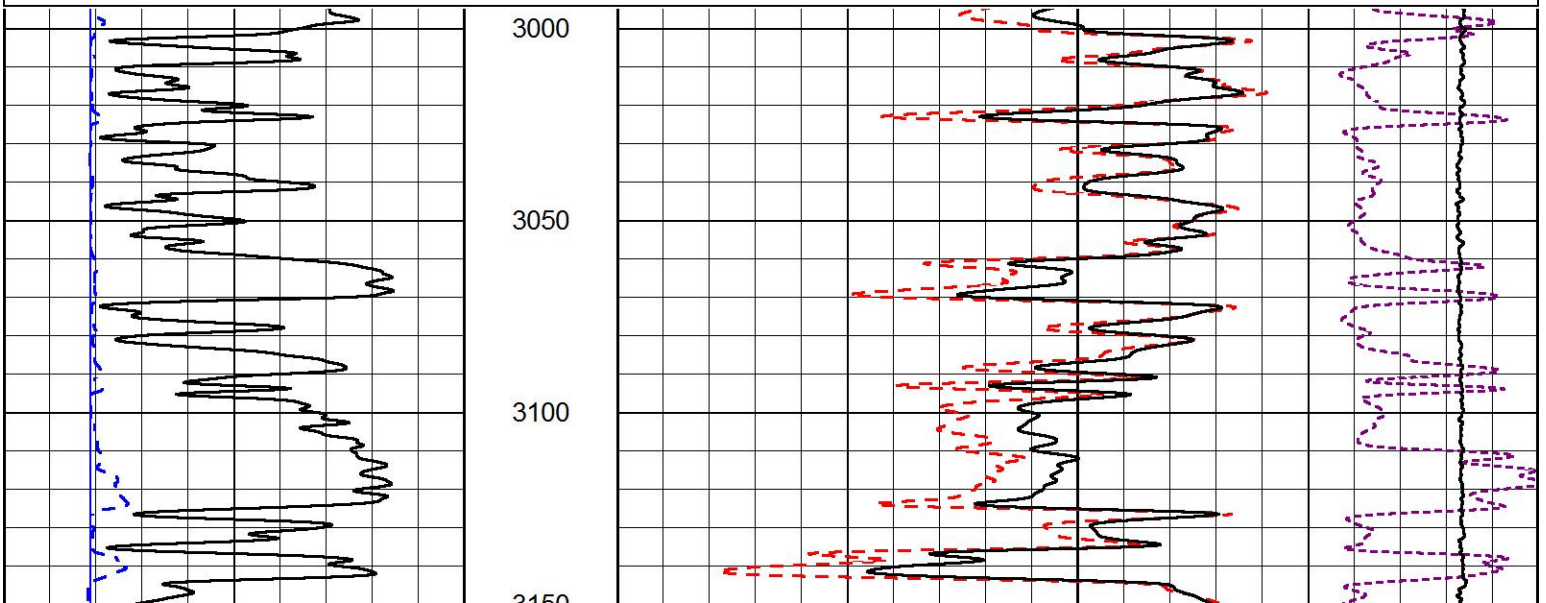
2" SCALE BULK DENSITY

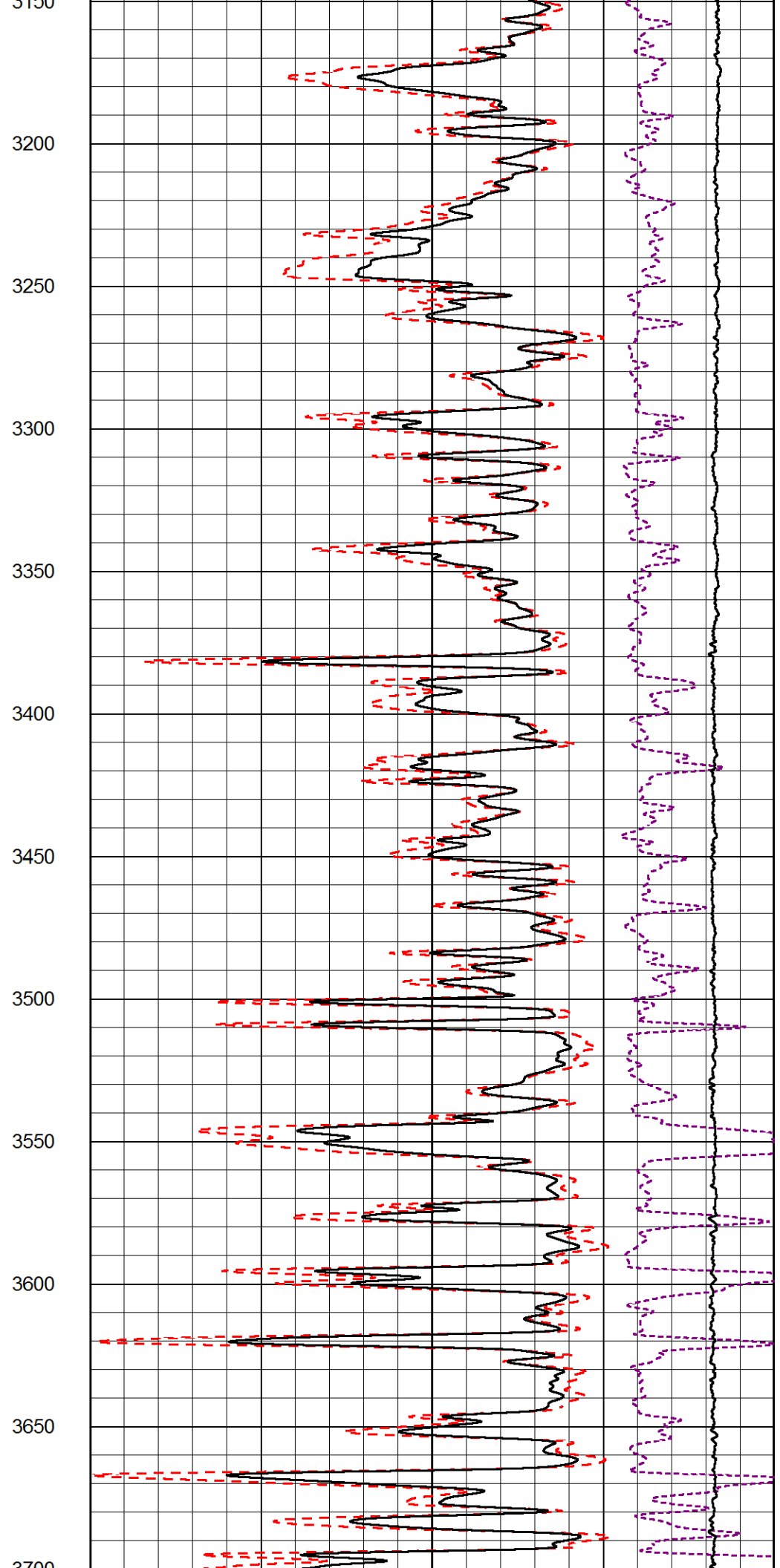
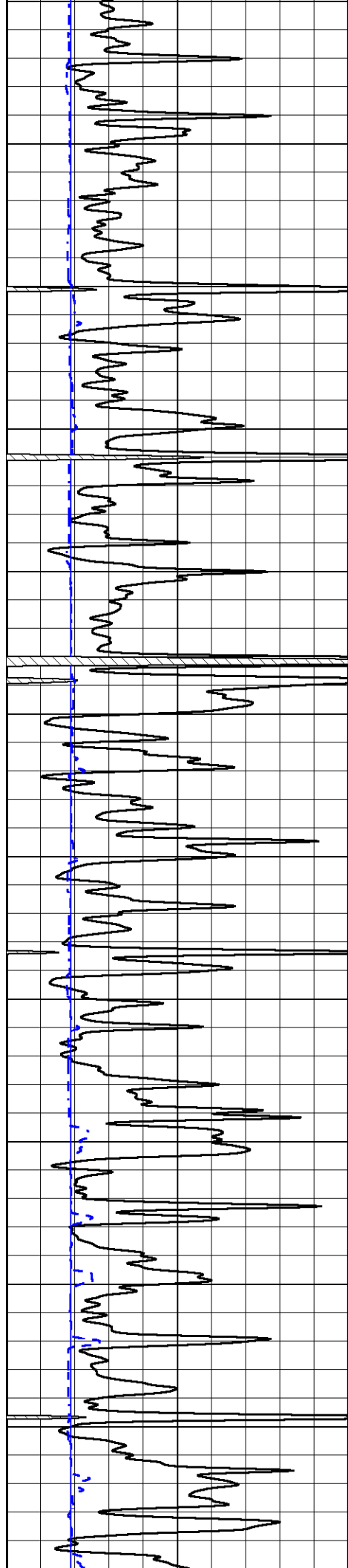
MAIN PASS

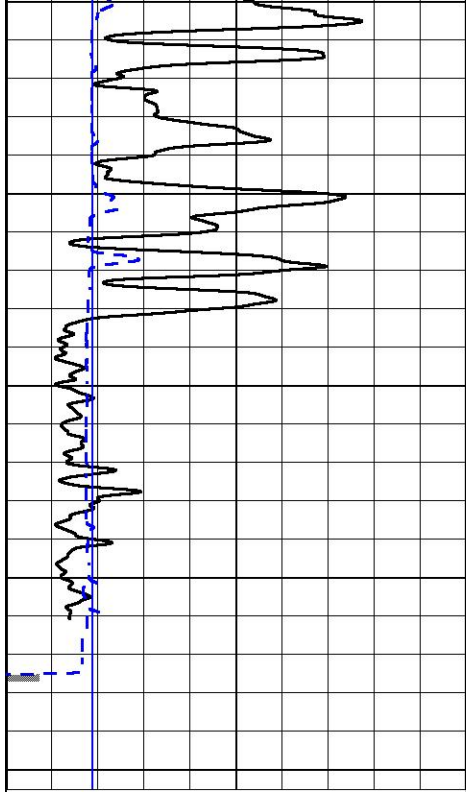
Database File tdi_schuster unit 1.db
 Dataset Pathname Stkml/pass5.1
 Presentation Format _cdl
 Dataset Creation Wed Jun 16 03:12:17 2021
 Charted by Depth in Feet scaled 1:600

0	GAMMA RAY (GAPI)	150
6	DCAL (in)	16

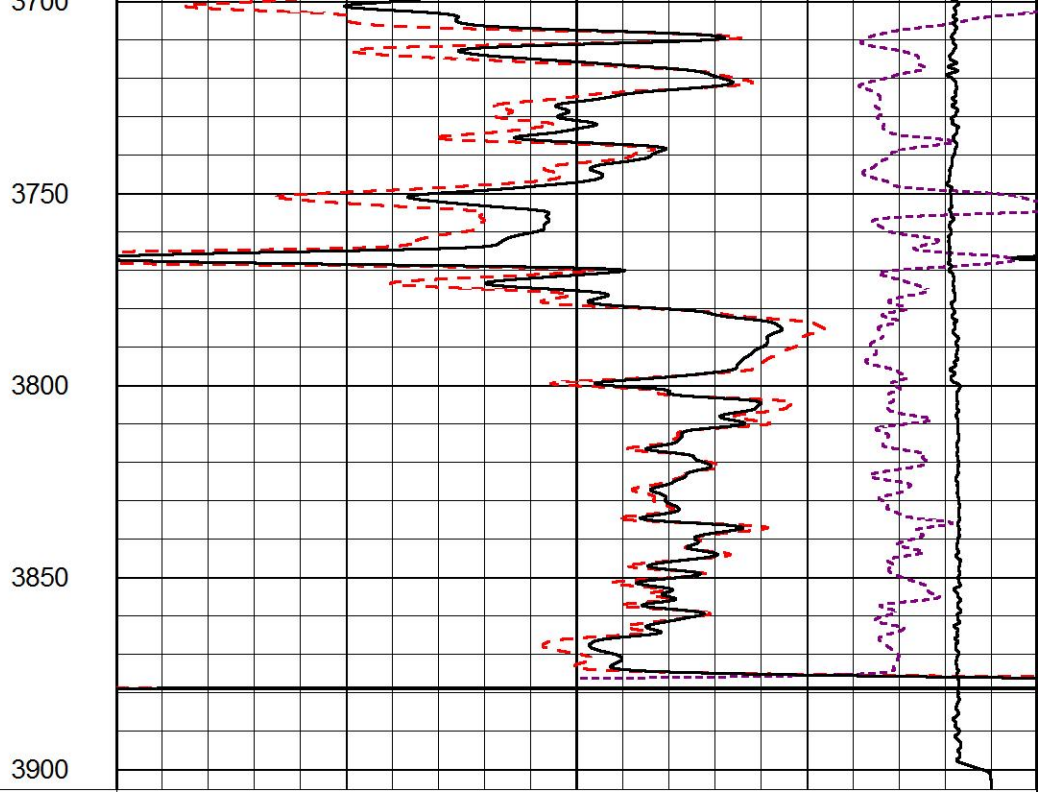
COMPENSATED DENSITY (2.65 MA)	
30	(pu) -10
2	BULK DENSITY (g/cc) 3
15000	LINE TENSION (lb) 0
-0.25	CORRECTION (g/cc) 0.25







0	GAMMA RAY (GAPI)	150
6	DCAL (in)	16



30	COMPENSATED DENSITY (2.65 MA)	(pu)	-10
2	BULK DENSITY (g/cc)		3
15000	LINE TENSION (lb)		0
-0.25	CORRECTION (g/cc)		0.25



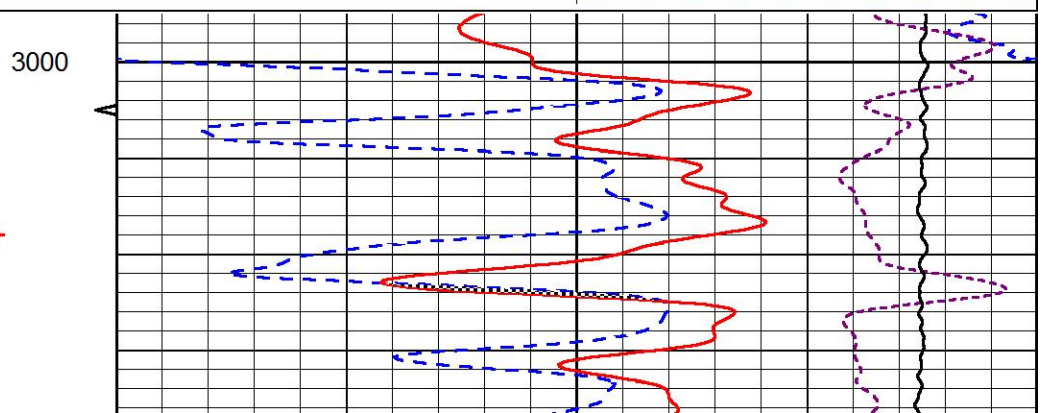
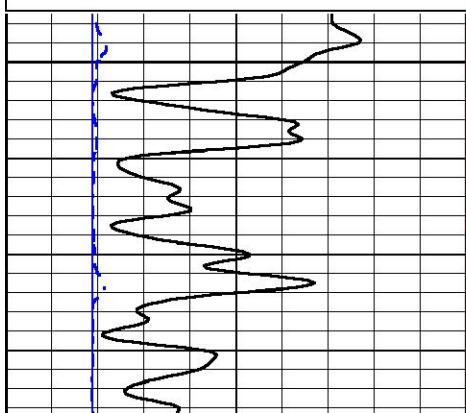
DETAIL SECTION

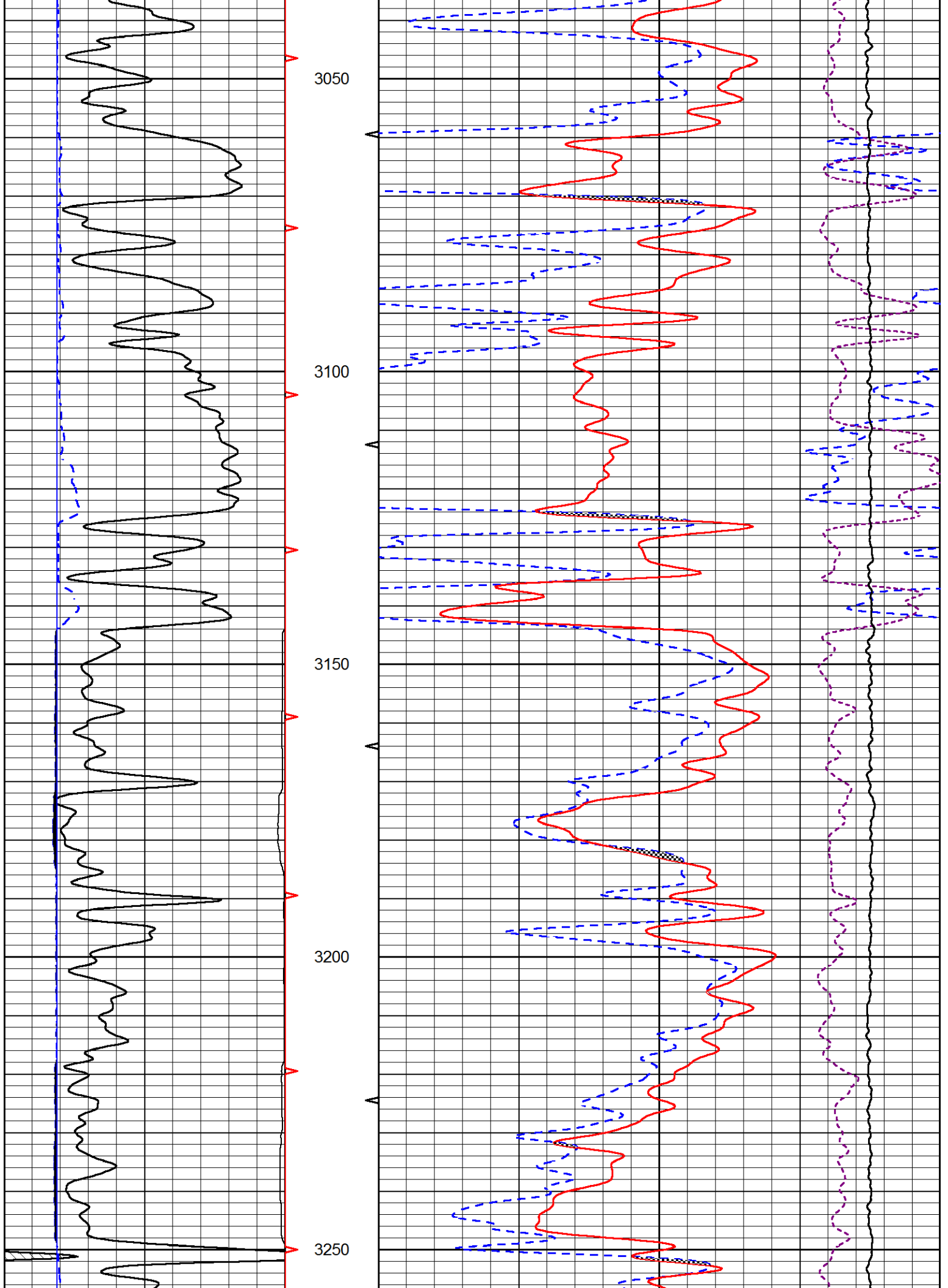
MAIN PASS

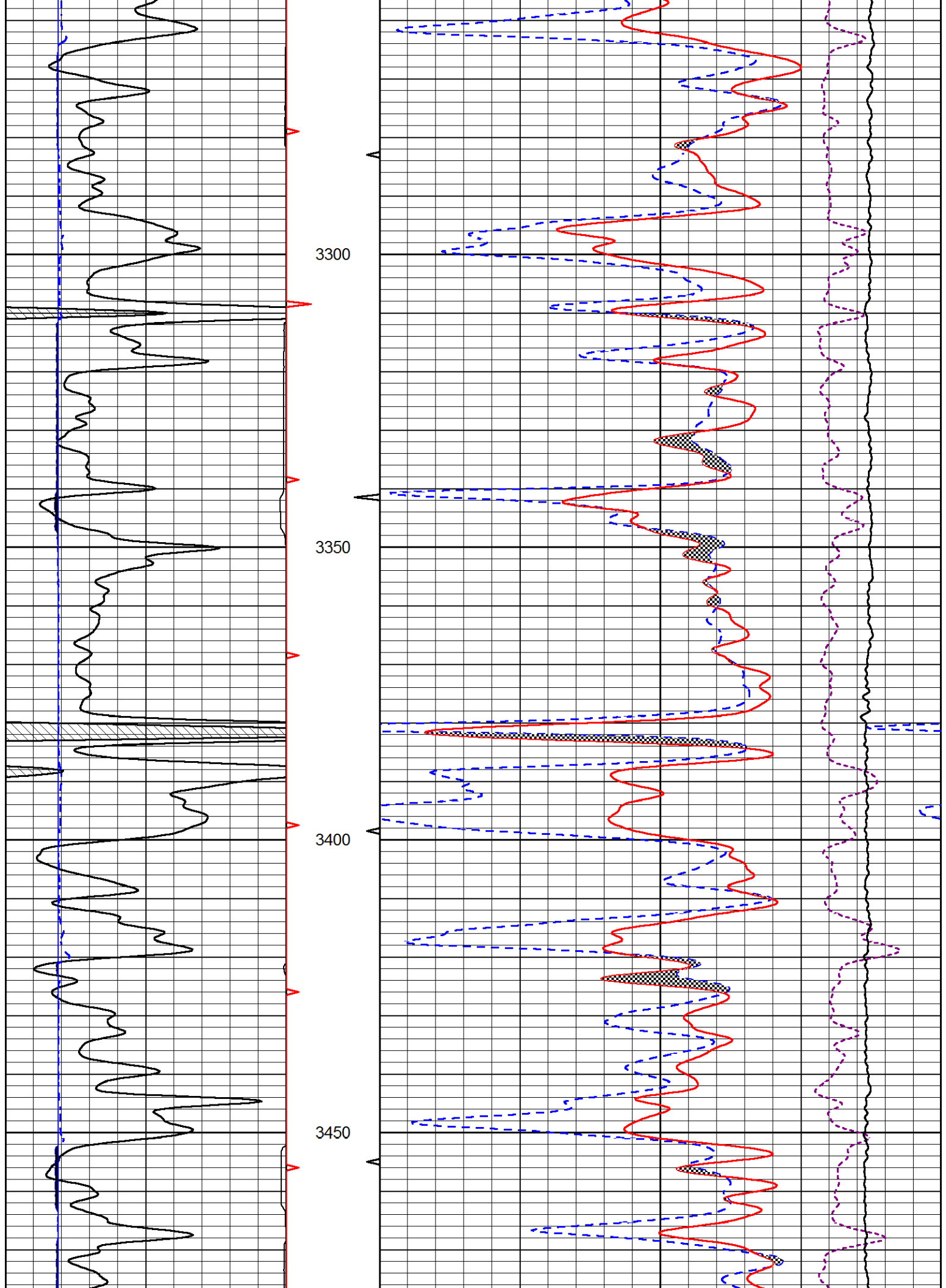
Database File tdi_schuster unit 1.db
 Dataset Pathname Stkml/pass4.1
 Presentation Format _CNDLS~1
 Dataset Creation Wed Jun 16 03:11:37 2021
 Charted by Depth in Feet scaled 1:240

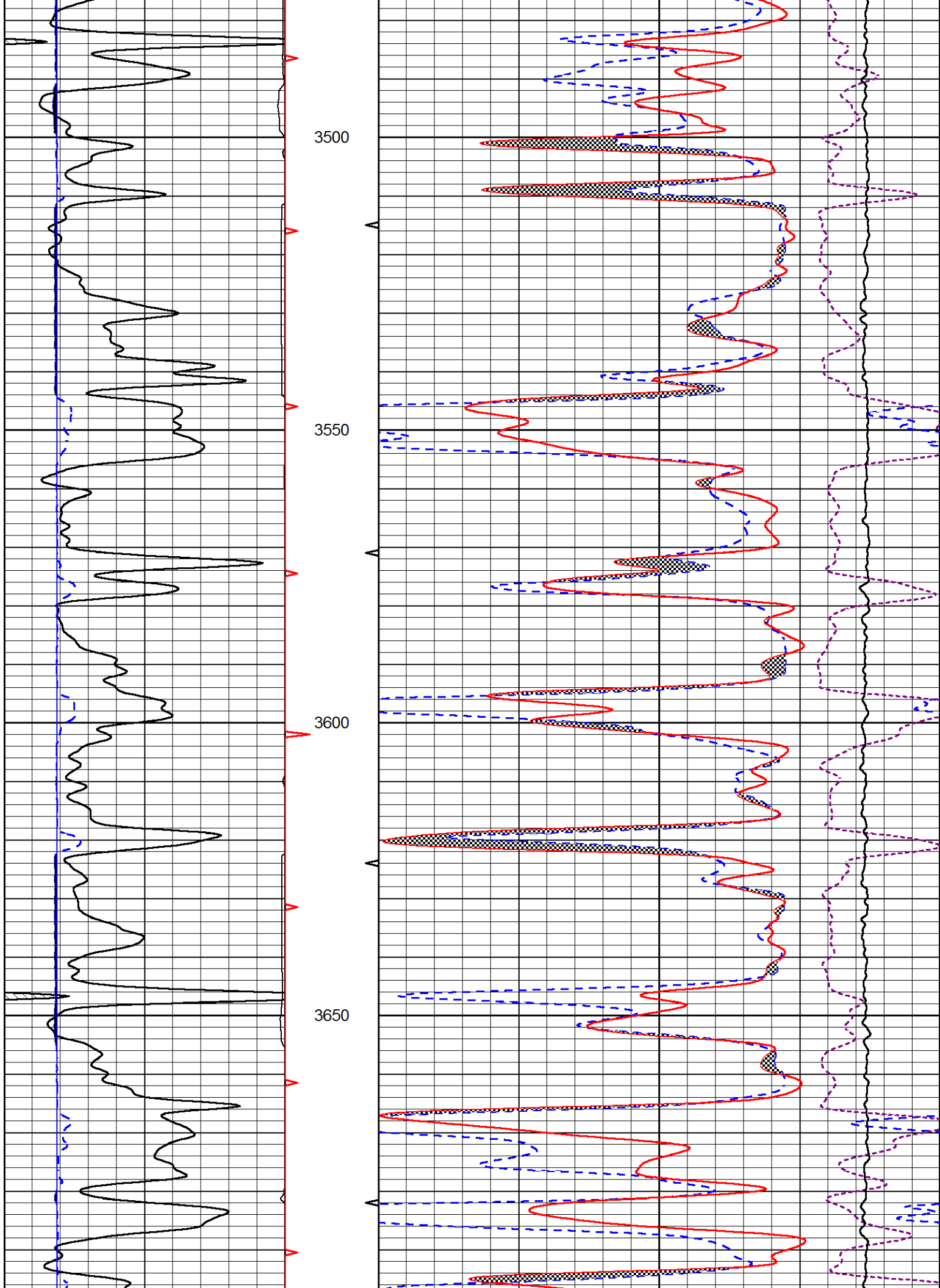
0	GAMMA RAY (GAPI)	150
6	DCAL (in)	16

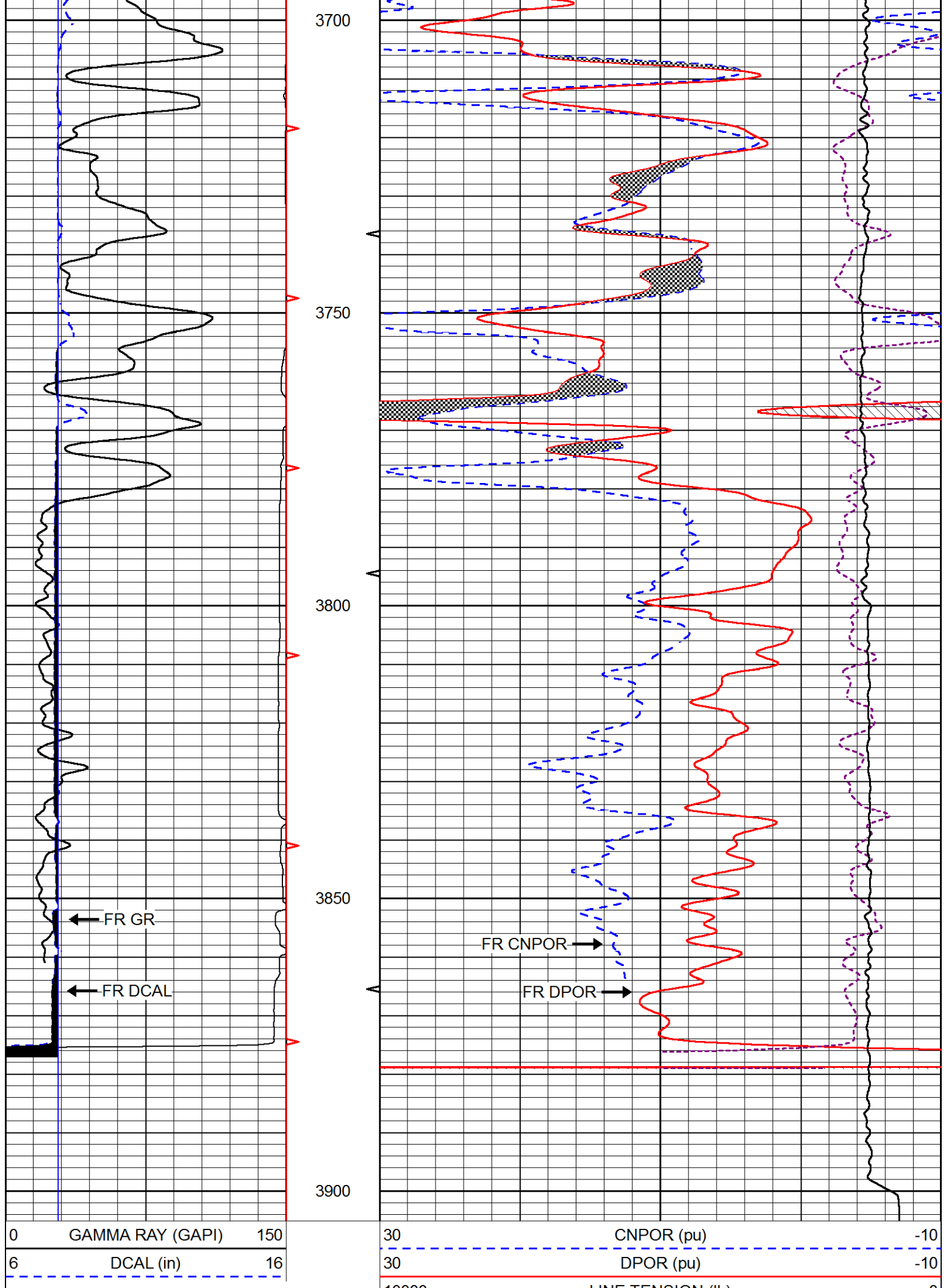
30	CNPOR (pu)	-10
30	DPOR (pu)	-10
10000	LINE TENSION (lb)	0
-0.25	CORRECTION (g/cc)	0.25











10000

LINE TENSION (lb)

0

-0.25 CORRECTION (g/cc) 0.25



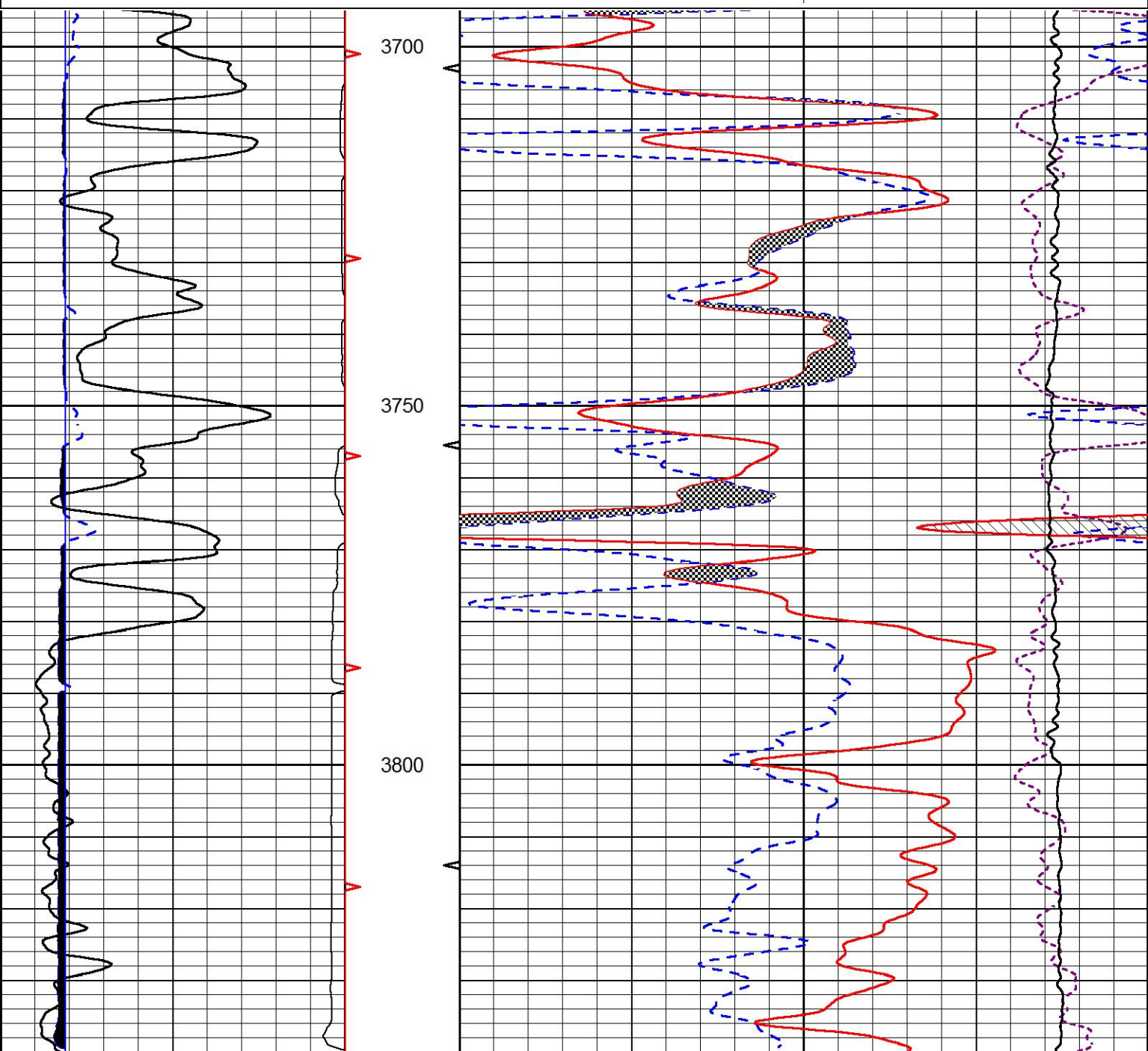
REPEAT SECTION

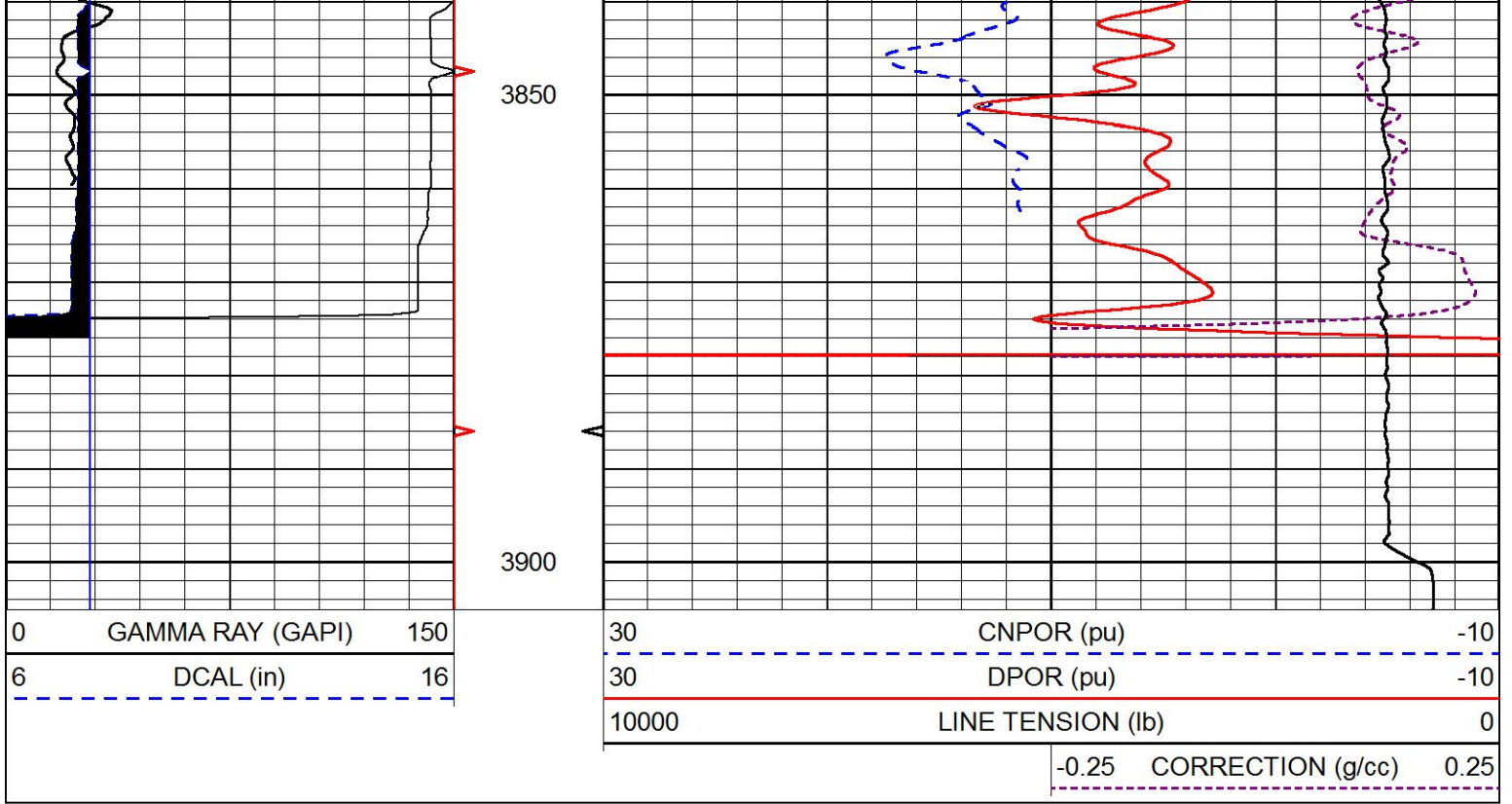
REPEAT PASS

Database File tdi_schuster unit 1.db
 Dataset Pathname Stkml/pass3.1
 Presentation Format _CNDLS~1
 Dataset Creation Wed Jun 16 03:06:45 2021
 Charted by Depth in Feet scaled 1:240

0	GAMMA RAY (GAPI)	150
6	DCAL (in)	16

30	CNPOR (pu)	-10
30	DPOR (pu)	-10
10000	LINE TENSION (lb)	0
-0.25	CORRECTION (g/cc)	0.25





Company	TDI, Inc.
Well	Schuster Unit #1
Field	Unnamed
County	Ellis
State	Kansas