



MIDWEST WIRELINE

MICRORESISTIVITY LOG

Company TDI, Inc.
 Well Schuster Unit #1
 Field Unnamed
 County Ellis State Kansas

Company TDI, Inc.
 Well Schuster Unit #1
 Field Unnamed
 County Ellis
 State Kansas

Location: API #: 15-051-27000-00-00
 780' FSL & 2535' FWL
 SEC 1 TWP 13S RGE 20W
 Permanent Datum Ground Level Elevation 2103'
 Log Measured From Kelly Bushing
 Drilling Measured From Kelly Bushing
 Other Services
 CNL/CDL
 DIL
 Elevation
 K.B. 2113'
 D.F. N/A
 G.L. 2103'

Date	6/16/2021	
Run Number	One	
Depth Driller	3900'	
Depth Logger	3898'	
Bottom Logged Interval	3897'	
Top Log Interval	3000'	
Casing Driller	8.625" @ 214'	
Casing Logger	211'	
Bit Size	7.875"	
Type Fluid in Hole	Chemical	
Salinity, ppm CL	5000	
Density / Viscosity	9.3	54
pH / Fluid Loss	10.5	6.0
Source of Sample	FLOWLINE	
Rm @ Meas. Temp	0.45 @ 80	
Rmt @ Meas. Temp	0.34 @ 80	
Rmc @ Meas. Temp	0.61 @ 80	
Source of Rmf / Rmc	CHARTS	
Rm @ BHT	0.31 @ 115	
Operating Rig Time	3 Hours	
Max Rec. Temp. F	115	
Equipment Number	P-24	
Location	HAYS	
Recorded By	D. Schmidt	
Witnessed By	Tom Denning	

<<< Fold Here >>>

All interpretations are opinions based on inferences from electrical or other measurements and Midwest Wireline LLC cannot and does not guarantee the accuracy or correctness of any interpretation, and Midwest Wireline LLC will not be liable or responsible for any loss, costs, damages, or expenses incurred or sustained by anyone resulting from any interpretation made by any of our officers, agents or employees.

Comments

N/A DENOTES NOT AVAILABLE OR NON-APPLICABLE.

Ellis,
 3 1/2 East on 6th St. (Feedlot),
 North into

Log Measured From: Kelly Bushing 10 Ft. Above Permanent Datum

THANK YOU FOR USING MIDWEST WIRELINE LLC
 785-625-3858

Your Midwest Wireline Crew		This Log Record Was Witnessed By	
Engineer: D. Schmidt	Operator:	Primary Witness: Tom Denning	Secondary Witness: Herb Deines
Operator:	Operator:	Secondary Witness:	Secondary Witness:

Core	Offset (ft)	Depth	Description	Length (ft)	O.D. (in)	Weight (lb)
------	-------------	-------	-------------	-------------	-----------	-------------

Sensor	Offset (ft)	Schematic	Description	Length (ft)	O.D. (in)	Weight (lb)
MCAL MI MN	1.00 1.00 1.00		ML-Armadillo (ARM001) Pengo Mandrel & Armadillo ML Electronics (2014)	5.50	3.50	100.00

Dataset: tdi_schuster unit 1.db: field/well/mel/pass4.1
Total length: 5.50 ft
Total weight: 100.00 lb
O.D.: 3.50 in

Log Variables

Database: C:\ProgramData\Warrior\Data\tdi_schuster unit 1.db
Dataset: field/well/Stkml/pass4.1/_vars_

Top - Bottom

A	BOREID in	BOTTEMP degF	CASEOD in	CASETHCK in	FLUIDDEN g/cc	M	MATRXDEN g/cc
1	7.875	115	5.5	0	1	2	2.71
NPORSEL	PERFS	SNDERR mmho/m	SNDERRM mmho/m	SPSHIFT mV	SRFTEMP degF	SZCOR	TDEPTH ft
Limestone	No	0	0	325	80	Off	3898

Variable Description

A : Cement Factor (a)
BOREID : Borehole I.D.
BOTTEMP : Bottom Hole Temperature
CASEOD : Casing O.D.
CASETHCK : Casing Thickness
FLUIDDEN : Fluid Density
M : Cement Exp (m)
MATRXDEN : Matrix Density

NPORSEL : Neutron Porosity Curve Select
PERFS : Perforation Flag
SNDERR : Deep Sonde Error Correction
SNDERRM : Medium Sonde Error Correction
SPSHIFT : S.P. Baseline Offset
SRFTEMP : Surface Temperature
SZCOR : CN Size Cor. ?
TDEPTH : Total Depth



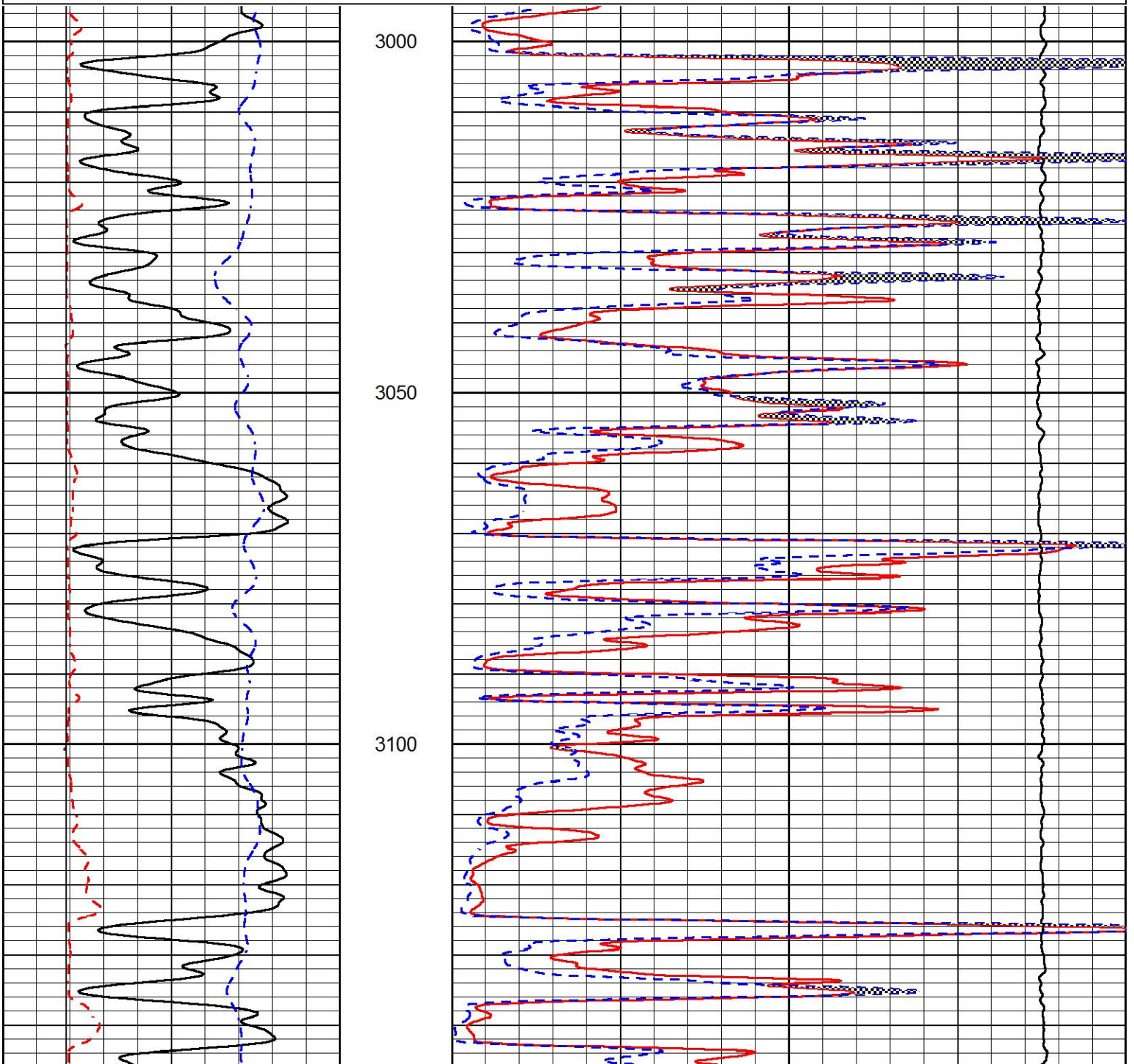
DETAIL SECTION

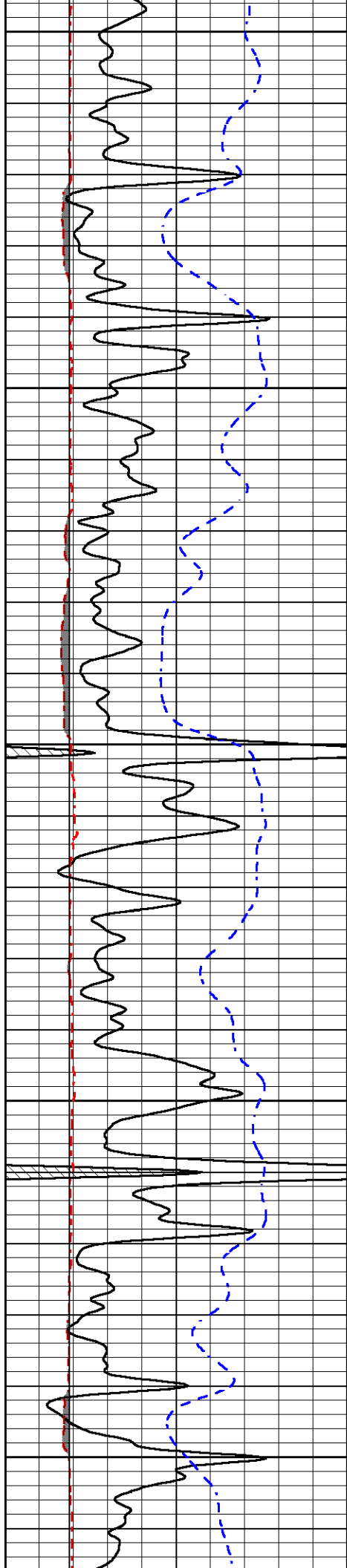
MAIN PASS

Database File tdi_schuster unit 1.db
 Dataset Pathname Stkml/pass4.1
 Presentation Format _micro
 Dataset Creation Wed Jun 16 03:11:37 2021
 Charted by Depth in Feet scaled 1:240

0	GAMMA RAY (GAPI)	150
6	MCAL (in)	16
6	Bit Size (in)	16
-200	sp (mV)	0

0	MICRO INVERSE 1 X 1 (Ohm-m)	40
0	MICRO NORMAL 2" (Ohm-m)	40
10000	Line Weight (lb)	0





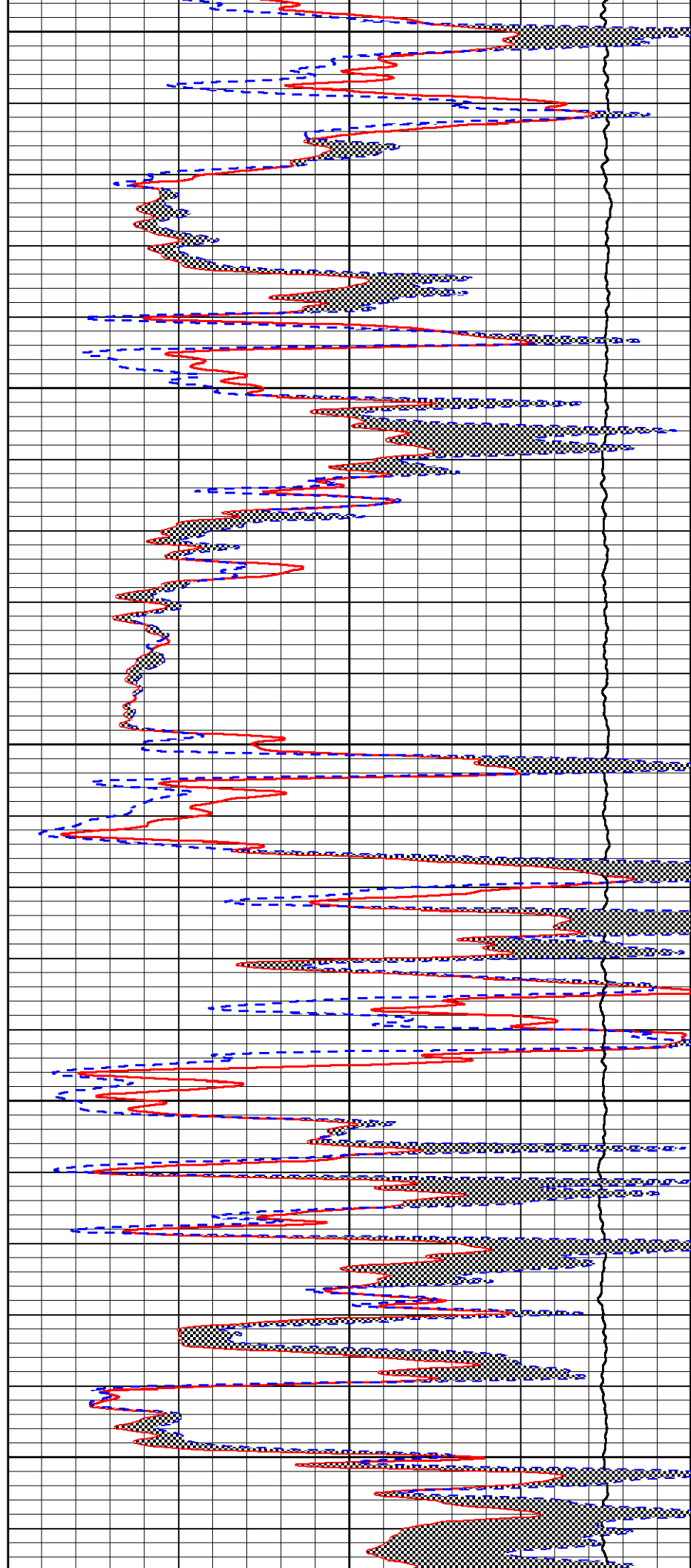
3150

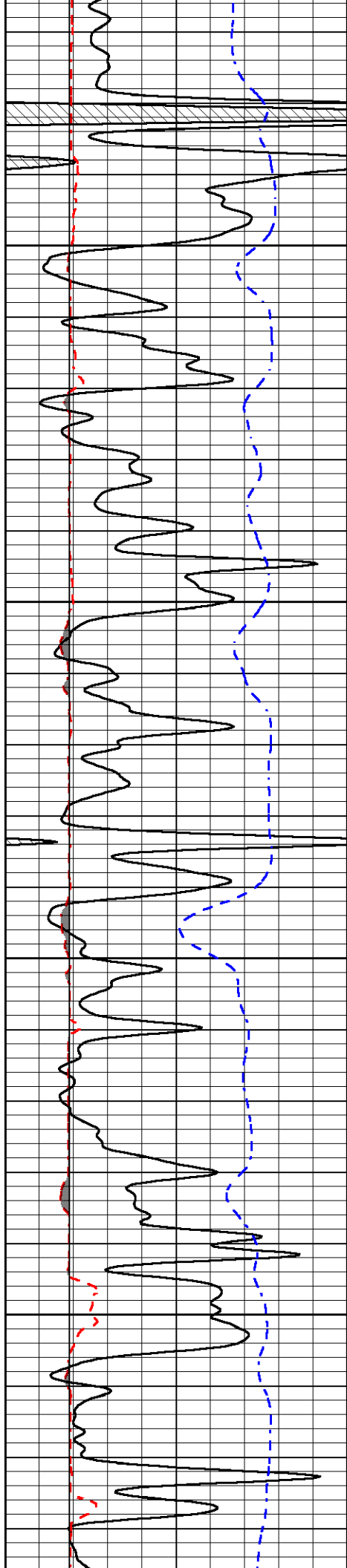
3200

3250

3300

3350



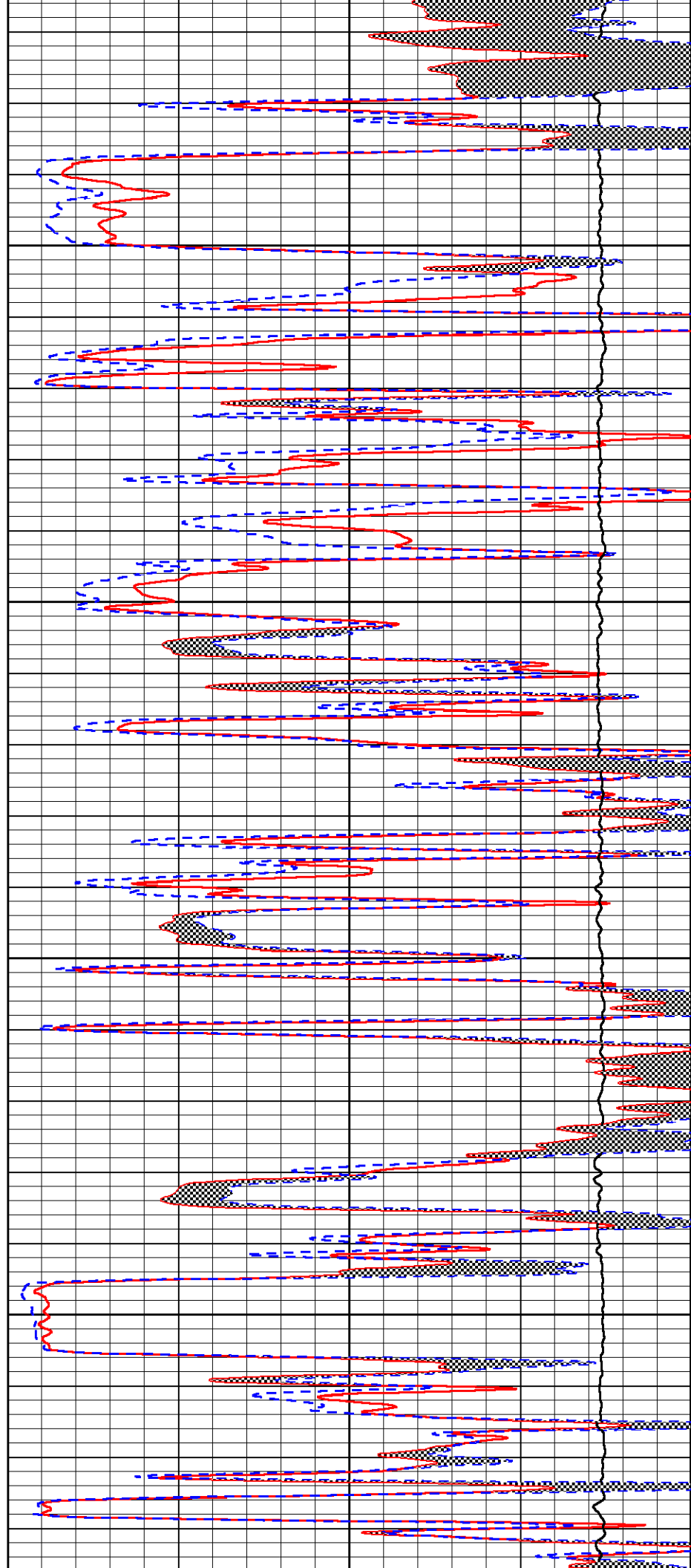


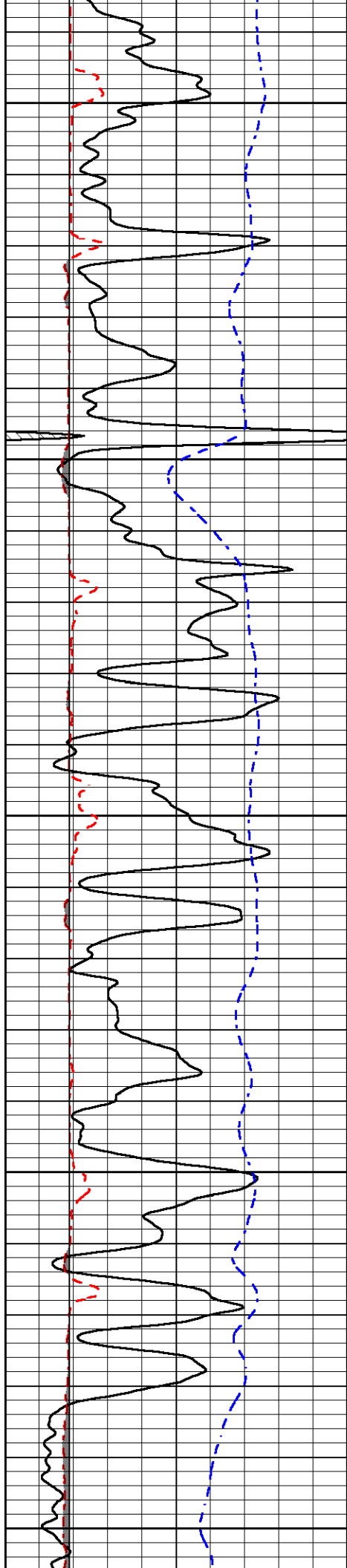
3400

3450

3500

3550





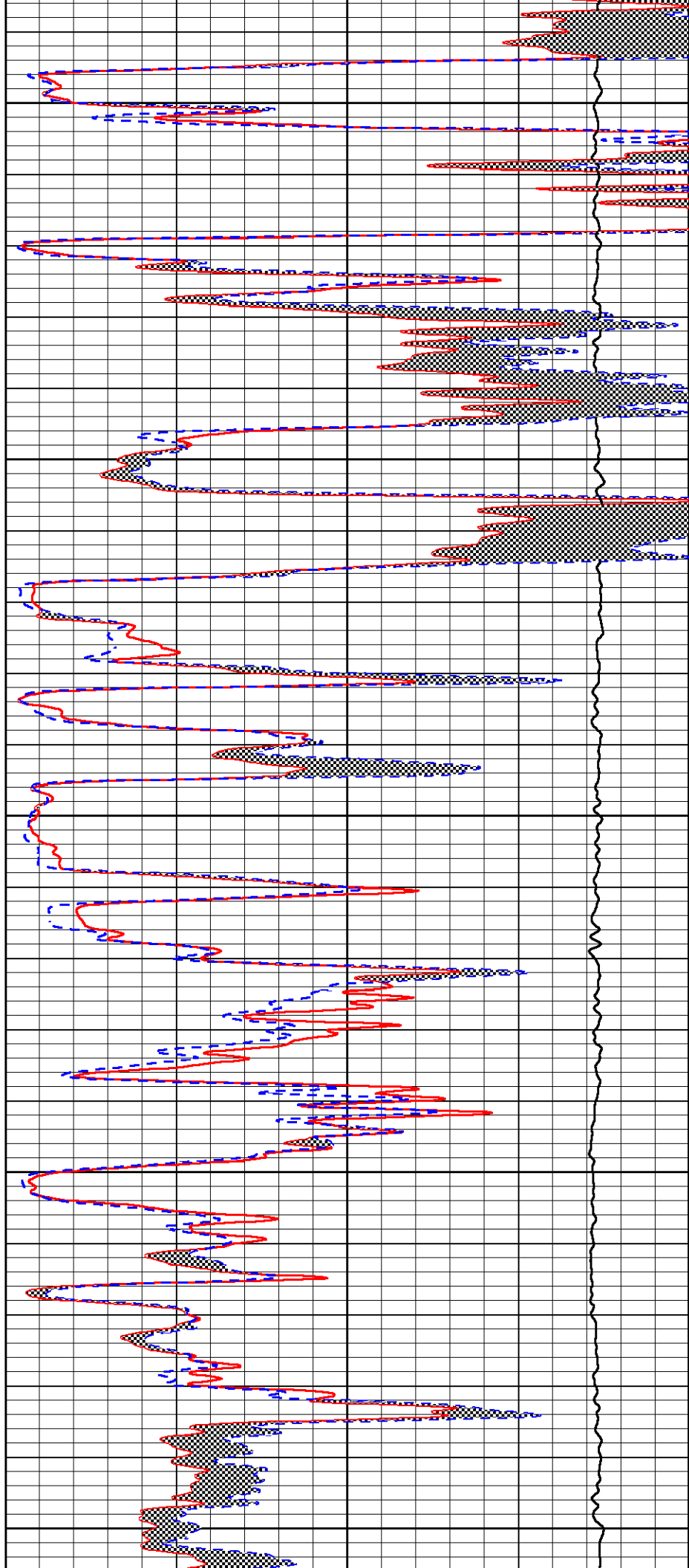
3600

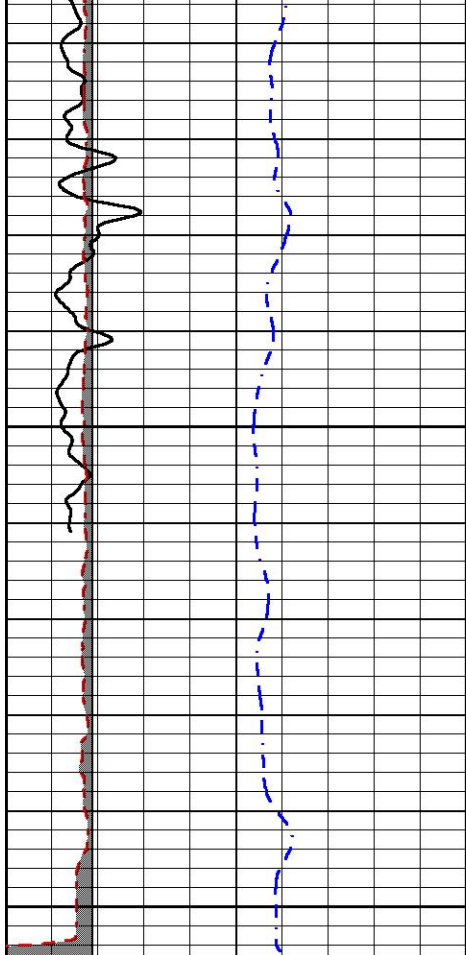
3650

3700

3750

3800

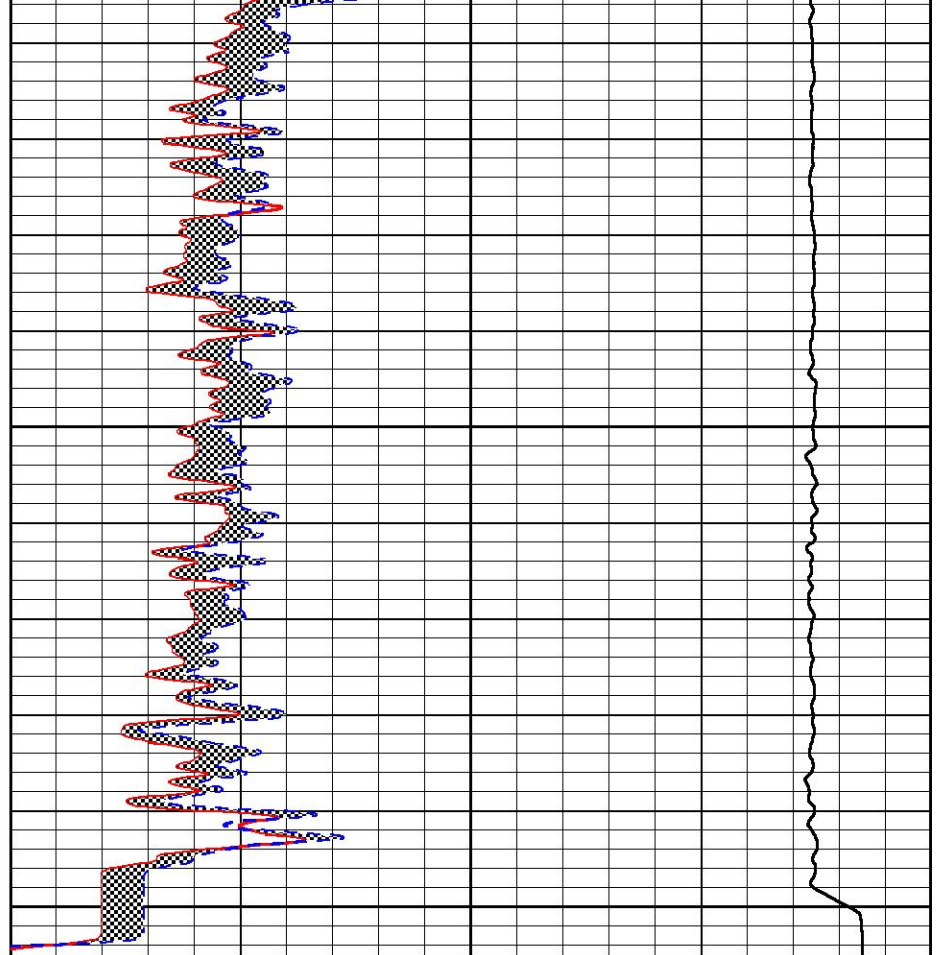




3850

3900

0	GAMMA RAY (GAPI)	150
6	MCAL (in)	16
6	Bit Size (in)	16
-200	sp (mV)	0



0	MICRO INVERSE 1 X 1 (Ohm-m)	40
0	MICRO NORMAL 2" (Ohm-m)	40
10000	Line Weight (lb)	0



MIDWEST WIRELINE

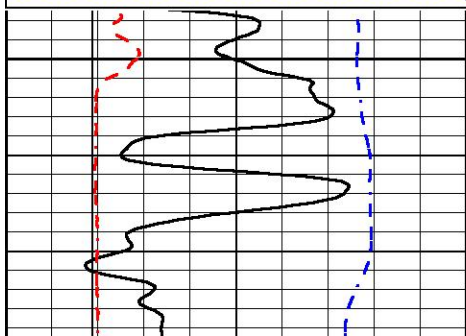
REPEAT SECTION

REPEAT PASS

Database File tdi_schuster unit 1.db
 Dataset Pathname Stkml/pass3.1
 Presentation Format _micro
 Dataset Creation Wed Jun 16 03:06:45 2021
 Charted by Depth in Feet scaled 1:240

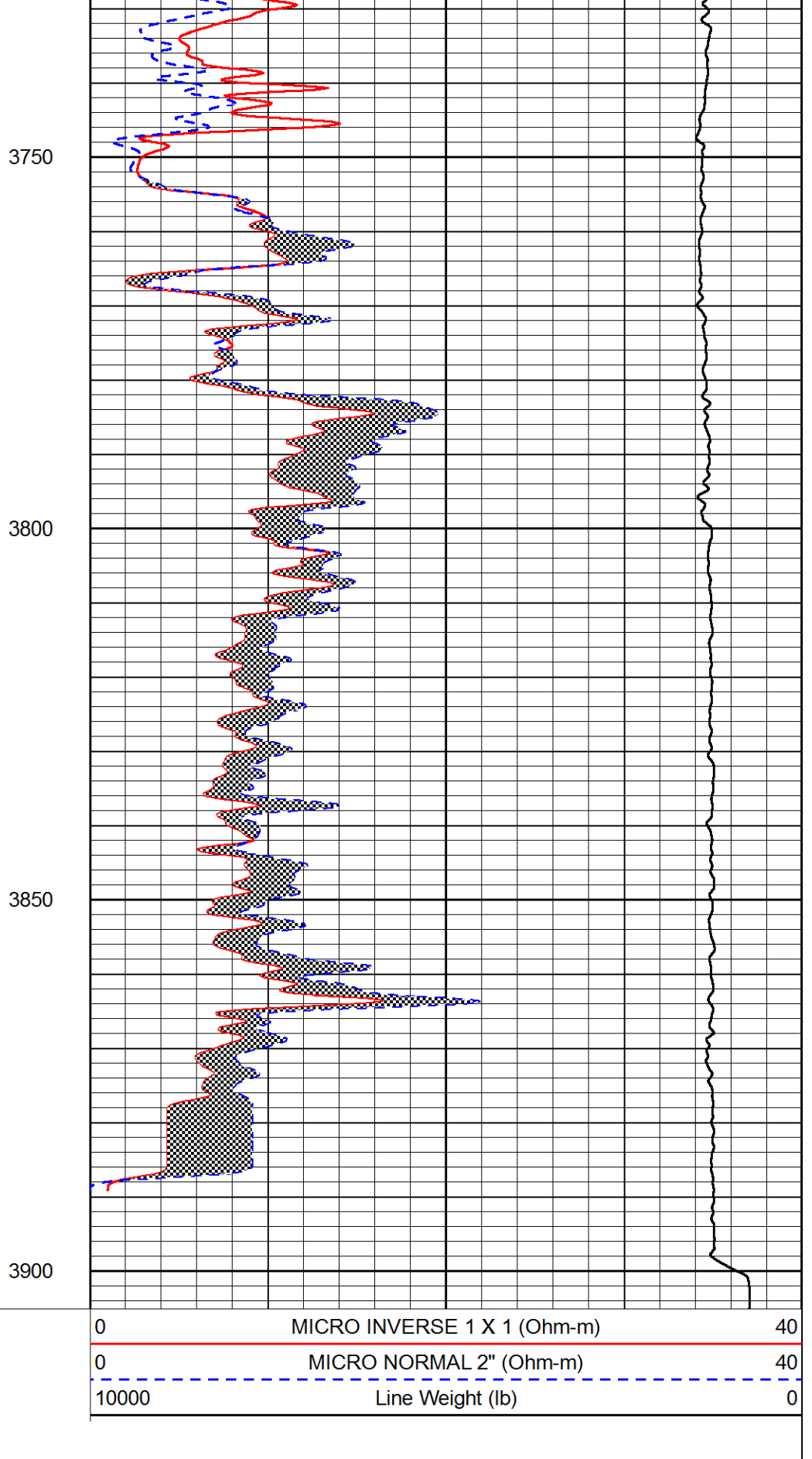
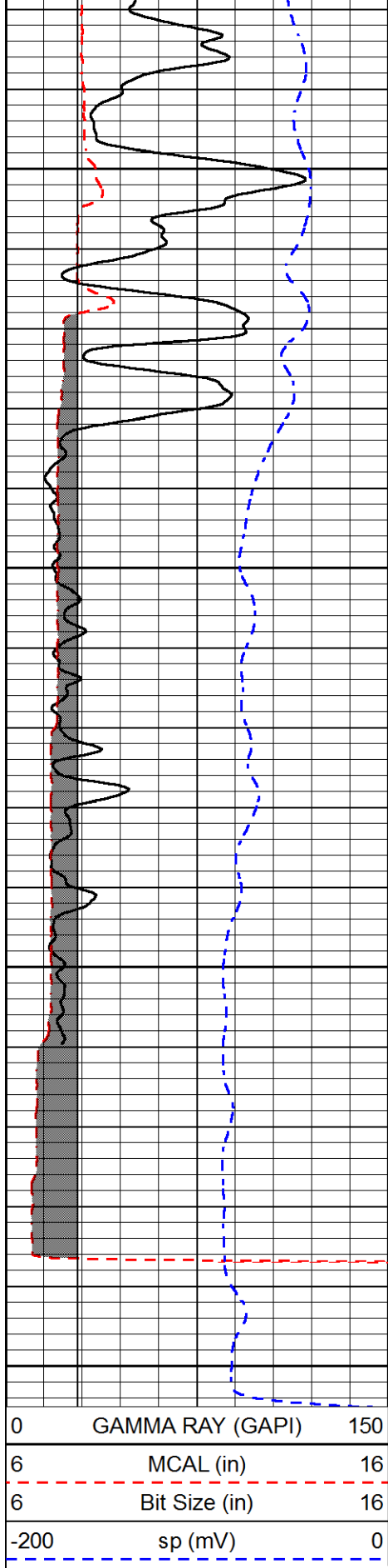
0	GAMMA RAY (GAPI)	150
6	MCAL (in)	16
6	Bit Size (in)	16
-200	sp (mV)	0

0	MICRO INVERSE 1 X 1 (Ohm-m)	40
0	MICRO NORMAL 2" (Ohm-m)	40
10000	Line Weight (lb)	0



3700





Company TDI, Inc.
 Well Schuster Unit #1
 Field Unnamed



County	Ellis
State	Kansas