



MIDWEST WIRELINE

DUAL INDUCTION LOG

Company Brito Oil Company, Inc.
 Well Shelton Trust #1-33
 Field Wildcat
 County Cheyenne State Kansas

Company Brito Oil Company, Inc.
 Well Shelton Trust #1-33
 Field Wildcat
 County Cheyenne
 State Kansas

Location: API #: 15-023-21547-00-00
 660' FNL & 2300' FWL
 SEC 33 TWP 4S RGE 37W
 Permanent Datum Ground Level Elevation 3393'
 Log Measured From Kelly Bushing
 Drilling Measured From Kelly Bushing
 Other Services
 CNL/CDL
 MEL
 Elevation
 K.B. 3398'
 D.F. N/A
 G.L. 3393'

Date	4/12/2021
Run Number	One
Depth Driller	5000'
Depth Logger	5000'
Bottom Logged Interval	4999'
Top Log Interval	350'
Casing Driller	8.625" @ 388'
Casing Logger	388'
Bit Size	7.875"
Type Fluid in Hole	Chemical
Salinity, ppm CL	1000
Density / Viscosity	9.1 64
pH / Fluid Loss	11.0 6.4
Source of Sample	FLOWLINE
Rm @ Meas. Temp	0.80 @ 60
Rmt @ Meas. Temp	0.60 @ 60
Rmc @ Meas. Temp	1.08 @ 60
Source of Rmf / Rmc	CHARTS
Rm @ BHT	0.38 @ 126
Operating Rig Time	4 Hours
Max Rec. Temp. F	126
Equipment Number	P-24
Location	HAYS
Recorded By	D. Schmidt
Witnessed By	Saman Sharifaie

<<< Fold Here >>>

All interpretations are opinions based on inferences from electrical or other measurements and Midwest Wireline LLC cannot and does not guarantee the accuracy or correctness of any interpretation, and Midwest Wireline LLC will not be liable or responsible for any loss, costs, damages, or expenses incurred or sustained by anyone resulting from any interpretation made by any of our officers, agents or employees.

Comments

N/A DENOTES NOT AVAILABLE OR NON-APPLICABLE.

Bird City,
 2 East to 31 Rd, 6 South to H Rd 1/2 East,
 South into

Log Measured From: Kelly Bushing 5 Ft. Above Permanent Datum

THANK YOU FOR USING MIDWEST WIRELINE LLC
 785-625-3858

Your Midwest Wireline Crew		This Log Record Was Witnessed By	
Engineer: D. Schmidt	Operator:	Primary Witness: Saman Sharifaie	Secondary Witness:
Operator:	Operator:	Secondary Witness:	Secondary Witness:
Operator:		Secondary Witness:	

Core	Offset (ft)	Depth	Description	Length (ft)	O.D. (in)	Weight (lb)
------	-------------	-------	-------------	-------------	-----------	-------------

Sensor	Offset (ft)	Schematic	Description	Length (ft)	O.D. (in)	Weight (lb)
GR	44.50		GR-M&W (233-M&W)	3.00	3.50	50.00
CNLSC CNSSC	41.40 40.65		CNT-M&W (207-MW)	5.50	3.50	100.00
LSD DCAL SSD	32.35 32.33 31.85		CDL-M&W (817-947)	8.50	4.00	250.00
MCAL MI MN	20.87 20.87 20.87		ML-PSI UDM ML (UDM-01) Stackable Microlog Tools	11.50	4.00	215.00
RLL3F RLL3	15.80 15.80					
CILD	8.00		DIL-PSI HIGH TEMP (952-828)	18.50	3.50	220.00
CILM	4.70					
SP	0.20					

Dataset: brito_shelton trust 1-33.db: field/well/stkml/pass3.1
 Total length: 47.00 ft
 Total weight: 835.00 lb
 O.D.: 4.00 in

Log Variables

DatabaseC:\ProgramData\Warrior\Data\brito_shelton trust 1-33.db
 Dataset field/well/stkml/pass3.1/_vars_

Top - Bottom

A	BOREID in	BOTTEMP degF	CASEOD in	CASETHCK in	FLUIDDEN g/cc	M	MATRXDEN g/cc
1	7.875	126	5.5	0	1	2	2.71
NPORSEL	PERFS	SNDERR mmho/m	SNDERRM mmho/m	SPSHIFT mV	SRFTEMP degF	SZCOR	TDEPTH ft
Limestone	No	0	0	210	60	Off	5000

Variable Description

A : Cement Factor (a)
 BOREID : Borehole I.D.
 BOTTEMP : Bottom Hole Temperature
 CASEOD : Casing O.D.
 CASETHCK : Casing Thickness
 FLUIDDEN : Fluid Density
 M : Cement Exp (m)
 MATRXDEN : Matrix Density

NPORSEL : Neutron Porosity Curve Select
 PERFS : Perforation Flag
 SNDERR : Deep Sonde Error Correction
 SNDERRM : Medium Sonde Error Correction
 SPSHIFT : S.P. Baseline Offset
 SRFTEMP : Surface Temperature
 SZCOR : CN Size Cor. ?
 TDEPTH : Total Depth

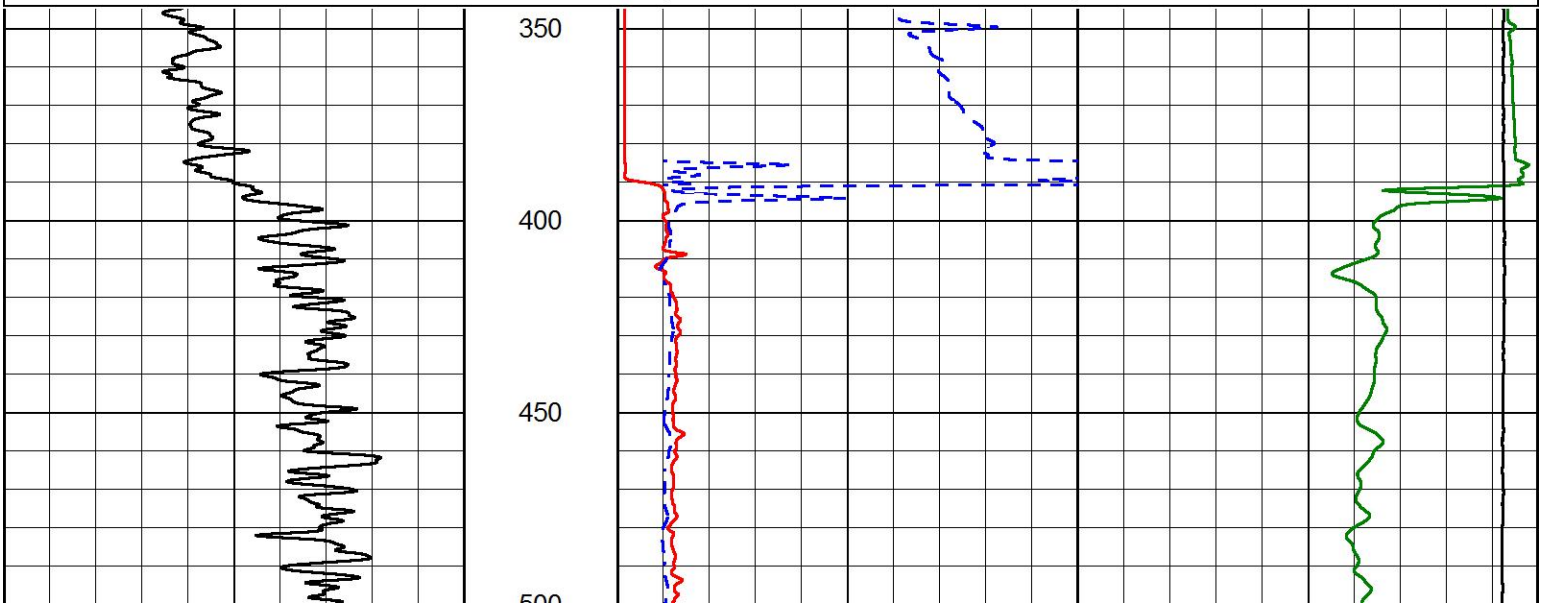


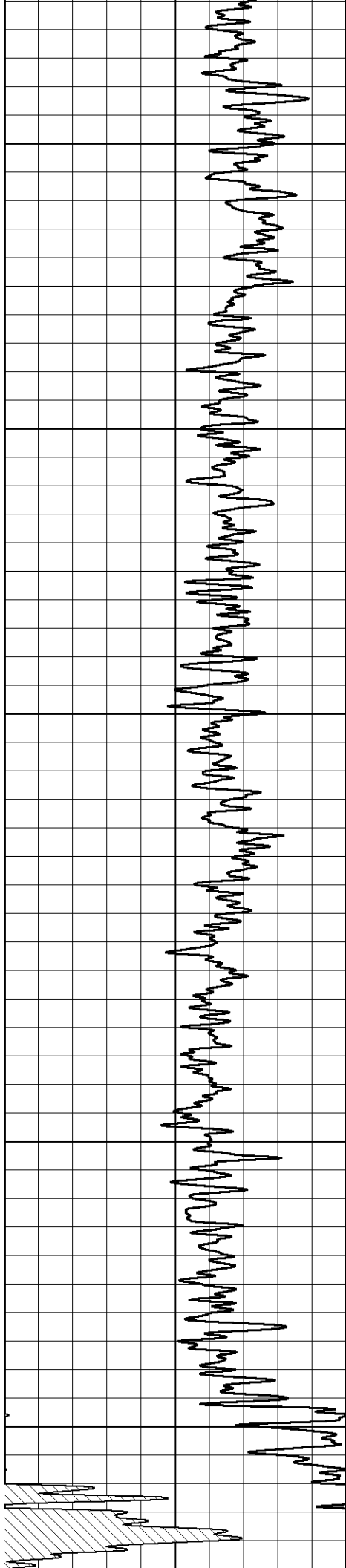
2" SCALE RESISTIVITY

MAIN PASS

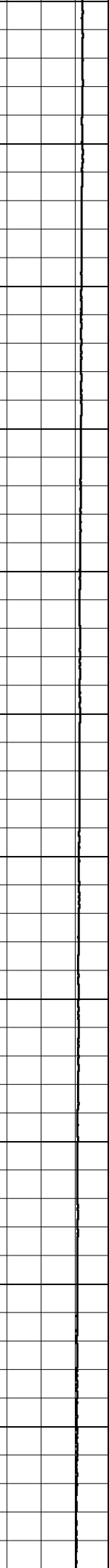
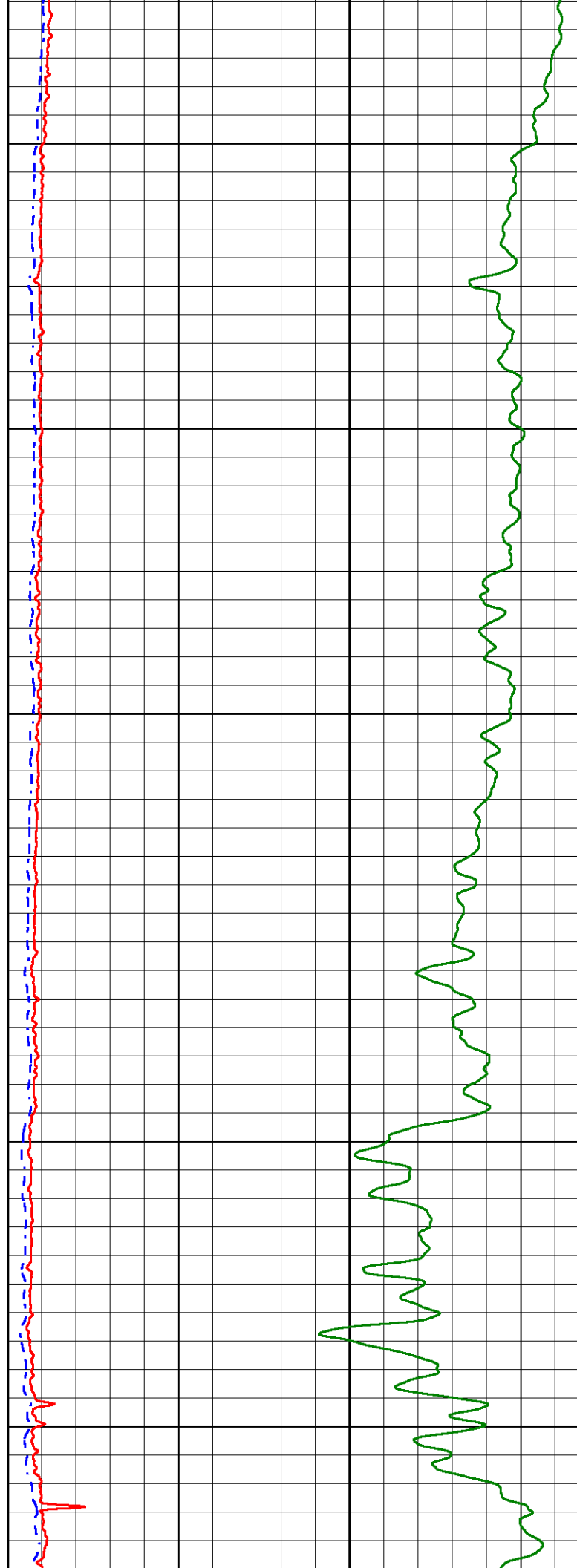
Database File brito_shelton trust 1-33.db
 Dataset Pathname stkml/pass6.1
 Presentation Format _dil2in
 Dataset Creation Tue Apr 13 00:25:12 2021
 Charted by Depth in Feet scaled 1:600

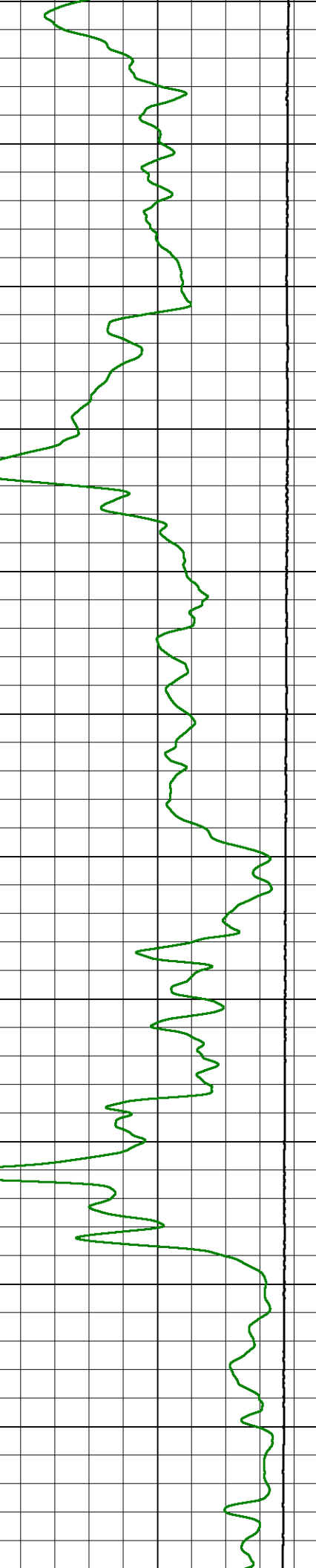
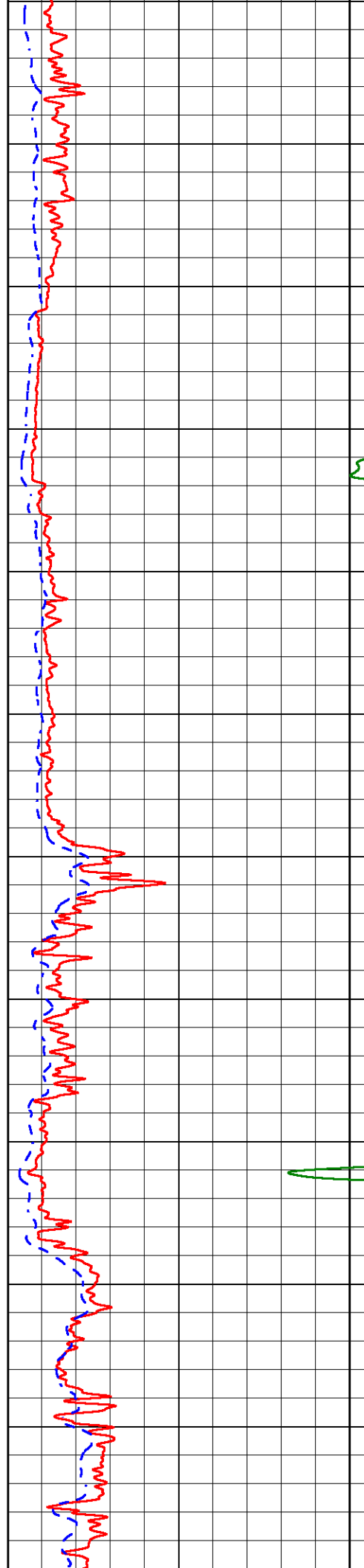
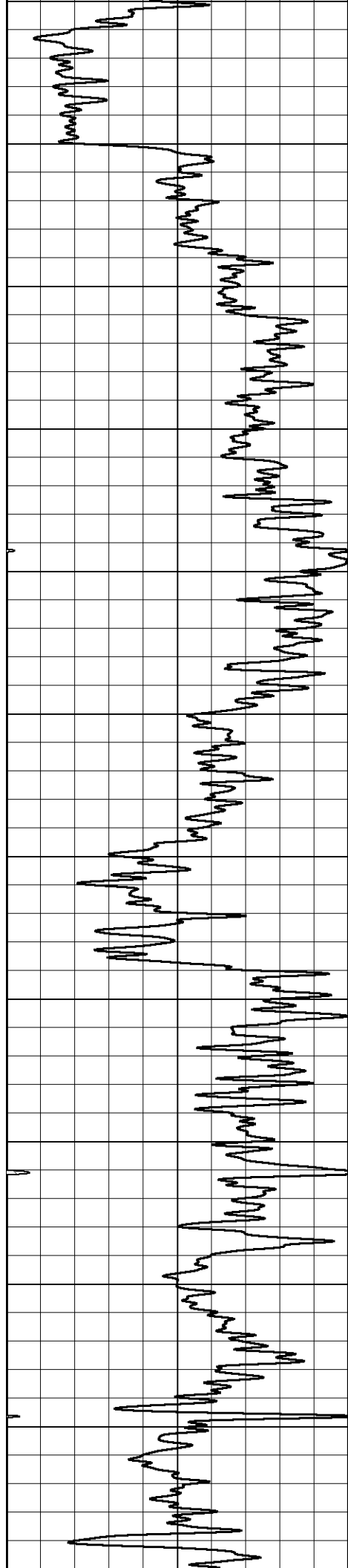
GAMMA RAY (GAPI) 150	1000	CONDUCTIVITY (mmho/m)	0
	15000	Line Tension (lb)	0
	0	RLL3 (Ohm-m)	50
	0	RILD (Ohm-m)	50
	50	RLL3 (Ohm-m)	200
	50	Deep Resistivity (Ohm-m)	200

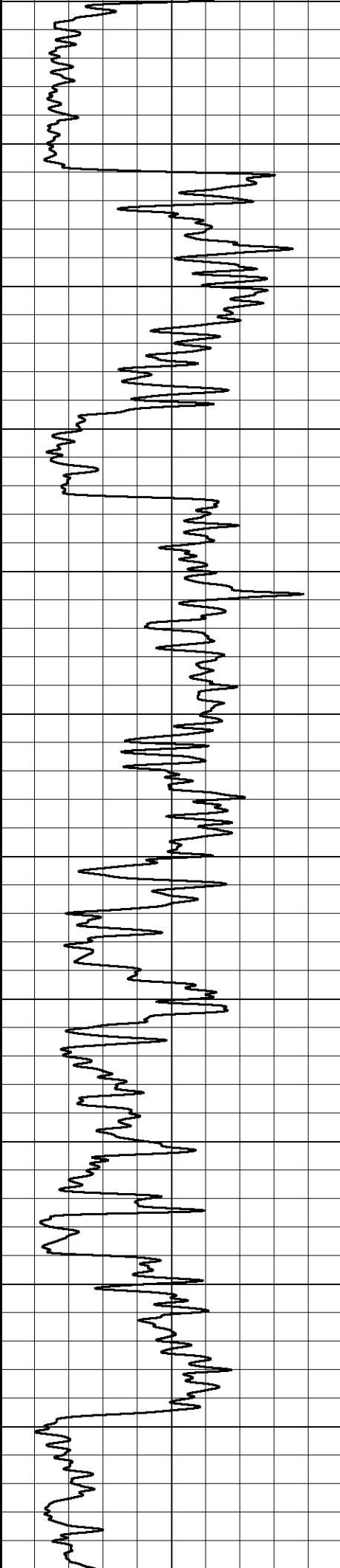




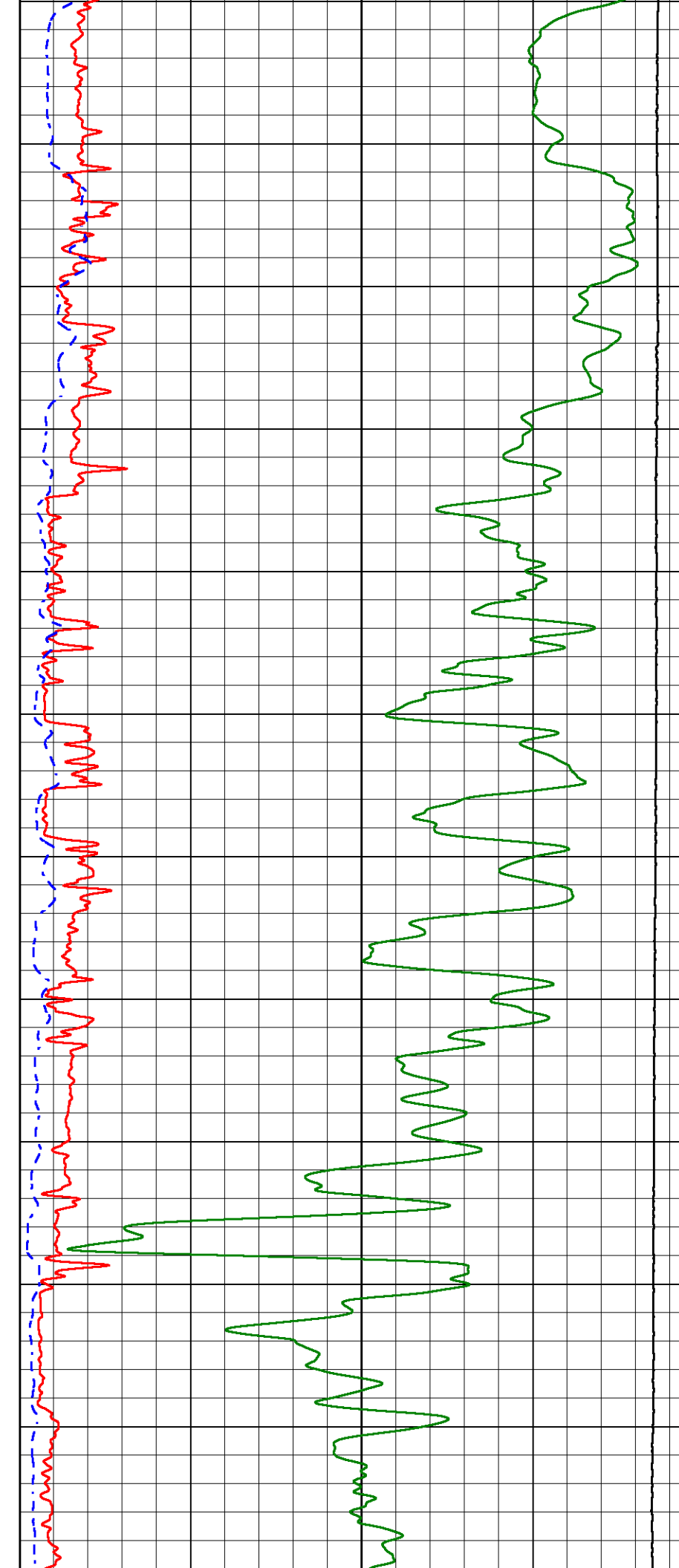
500
550
600
650
700
750
800
850
900
950
1000
1050

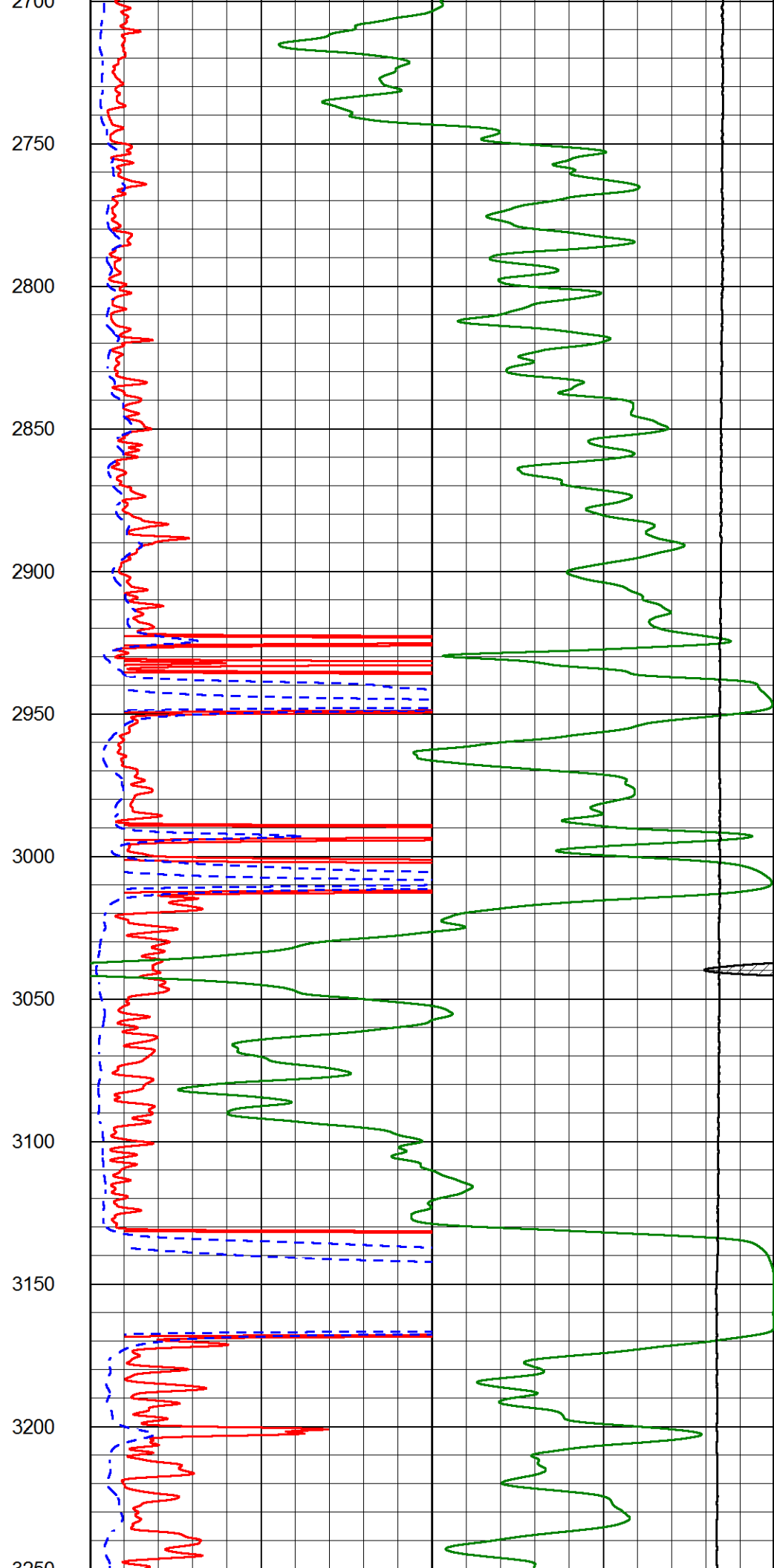
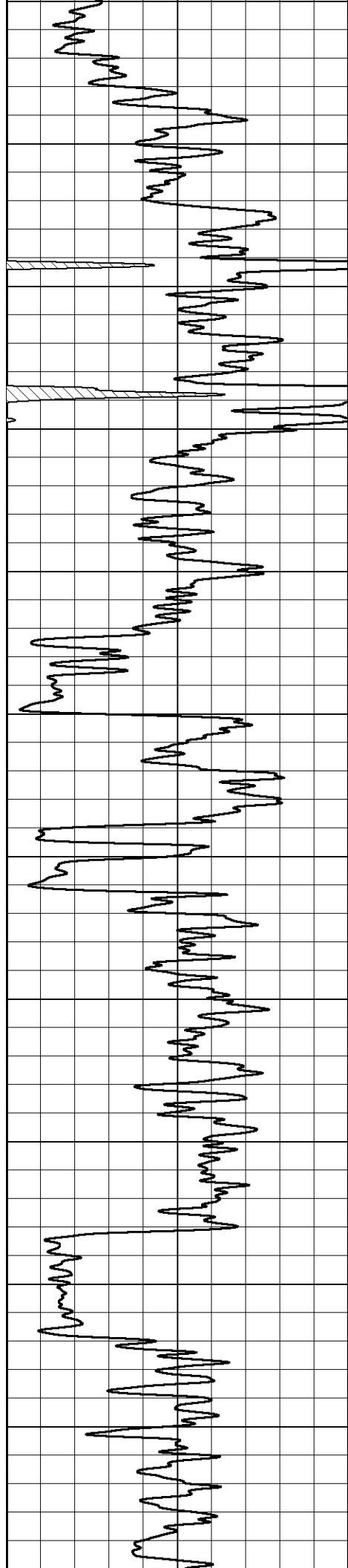


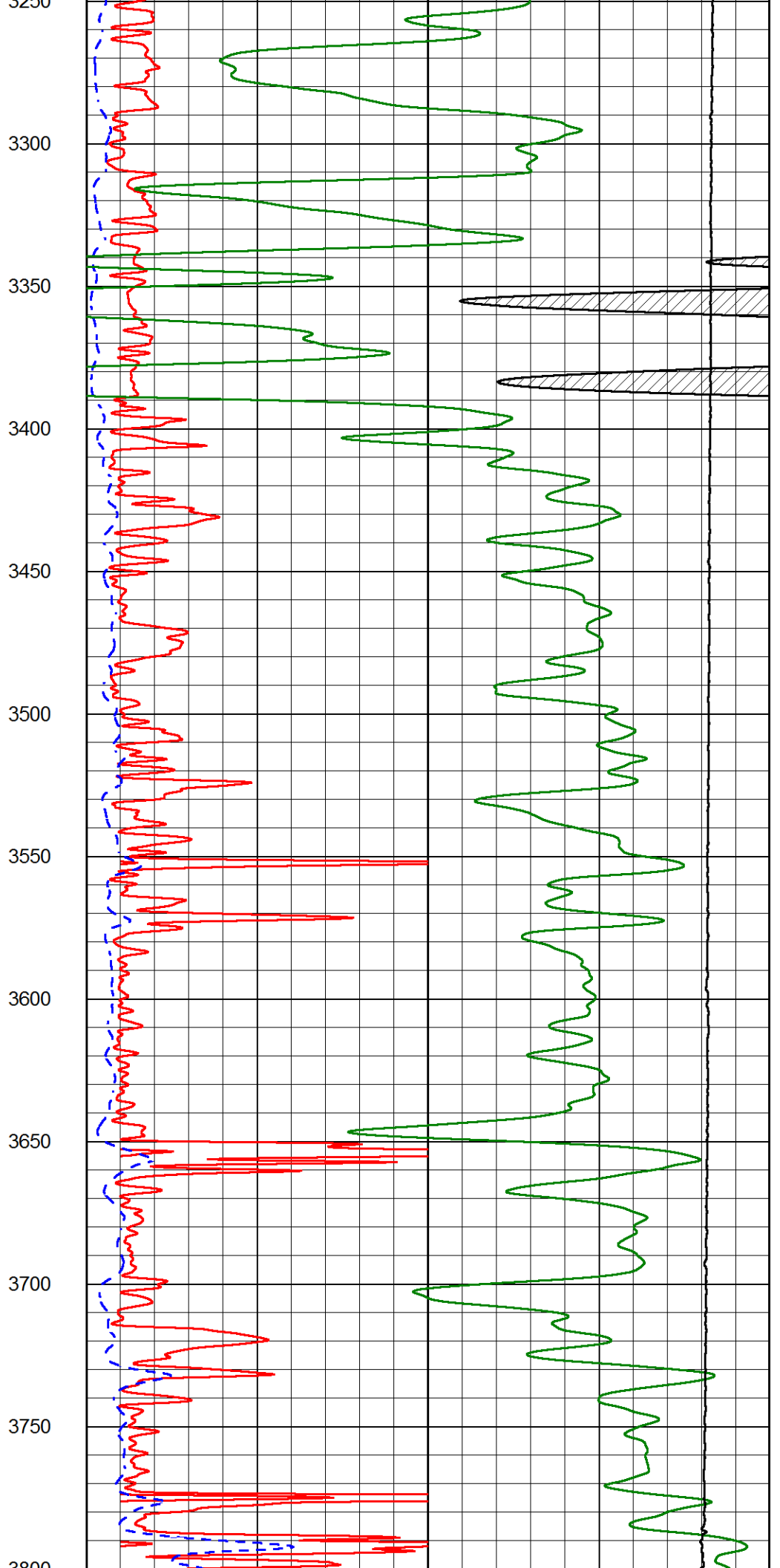
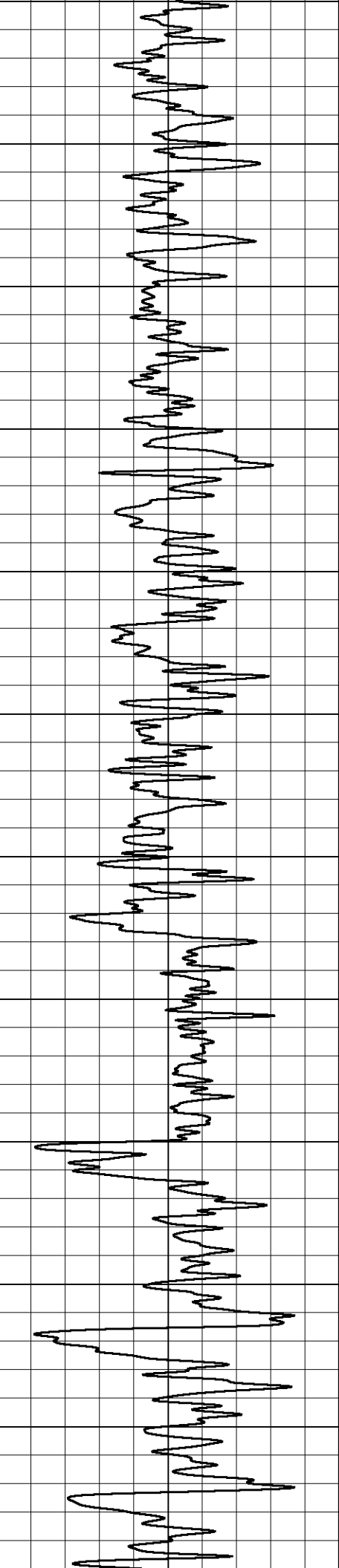


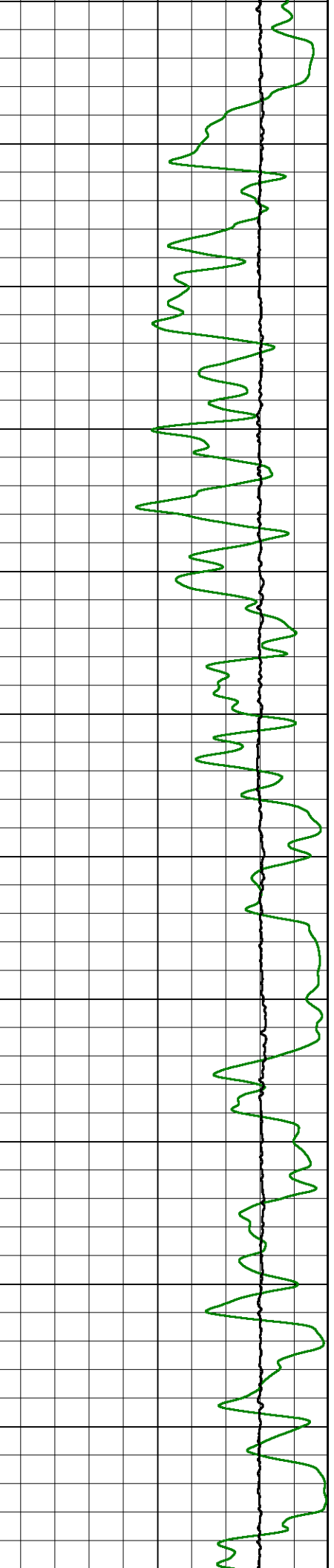
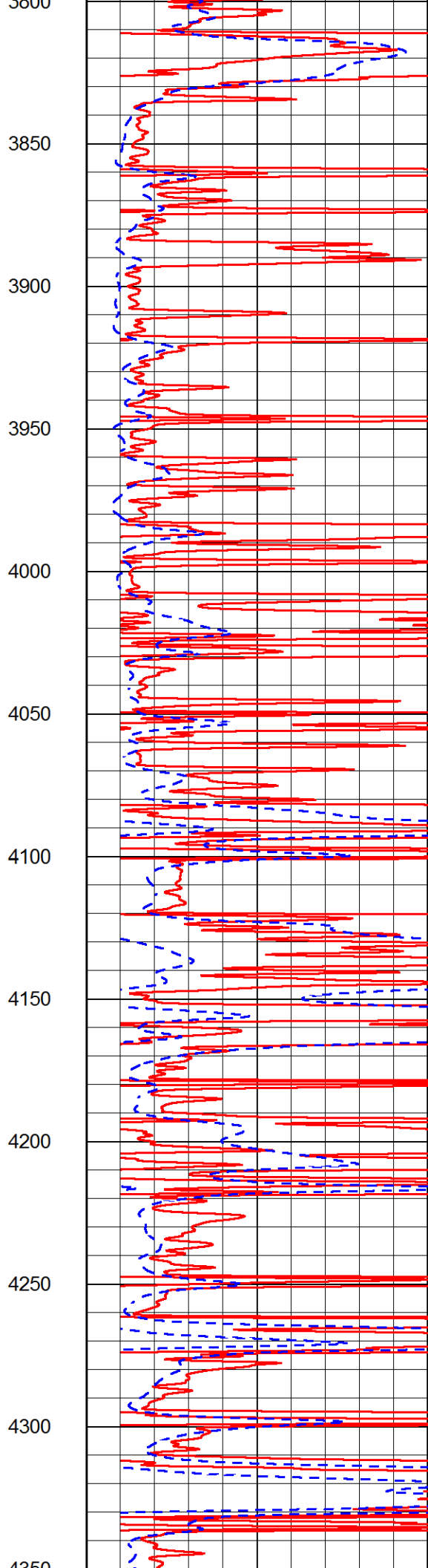
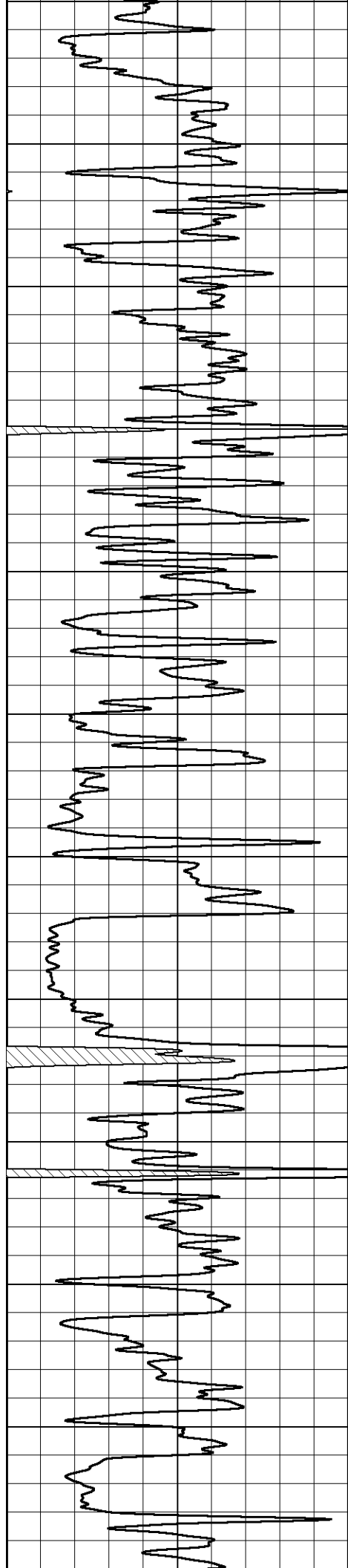


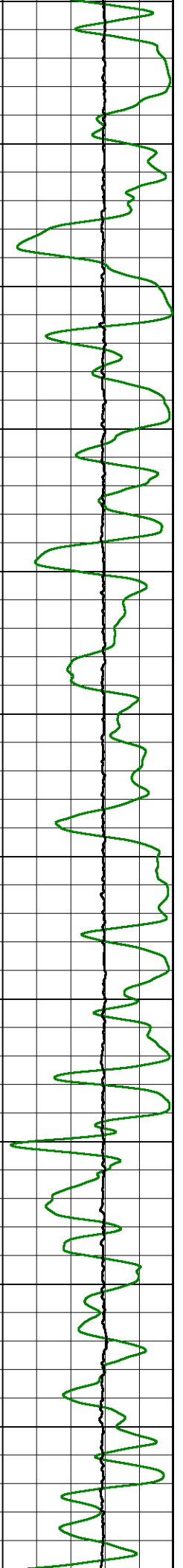
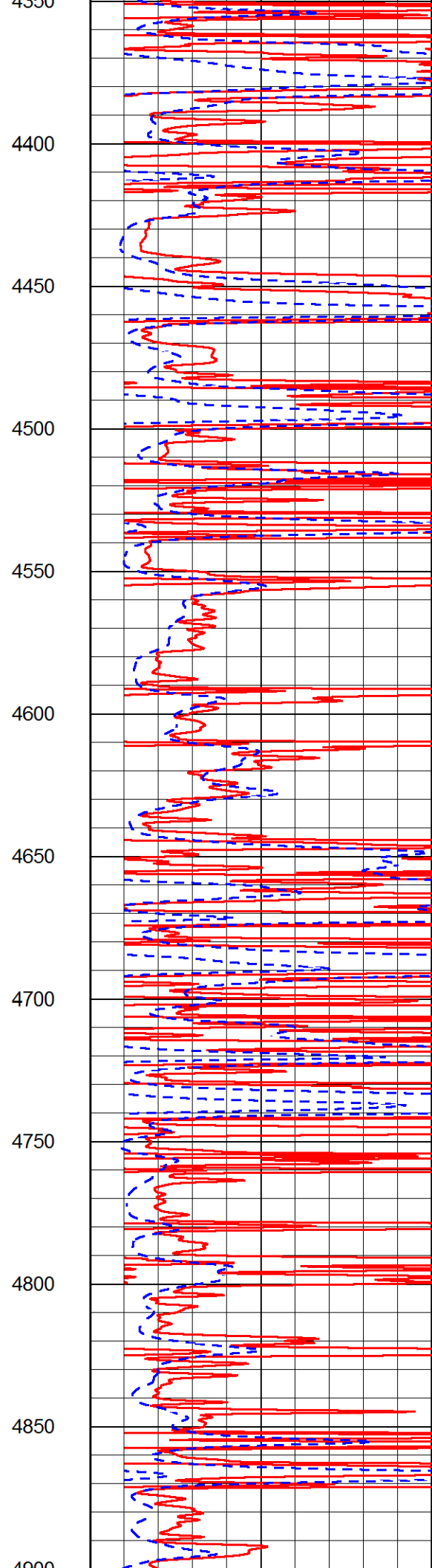
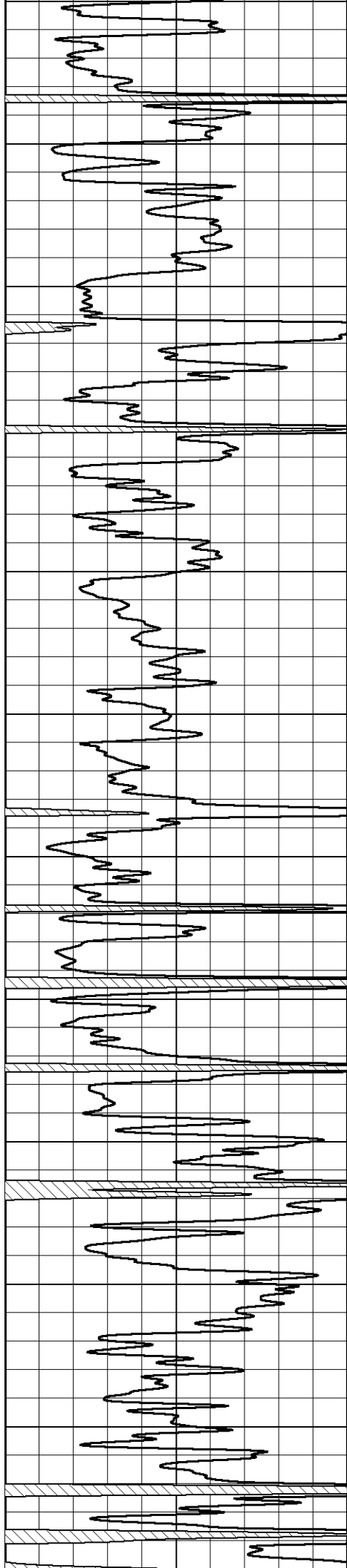
2150
2200
2250
2300
2350
2400
2450
2500
2550
2600
2650
2700

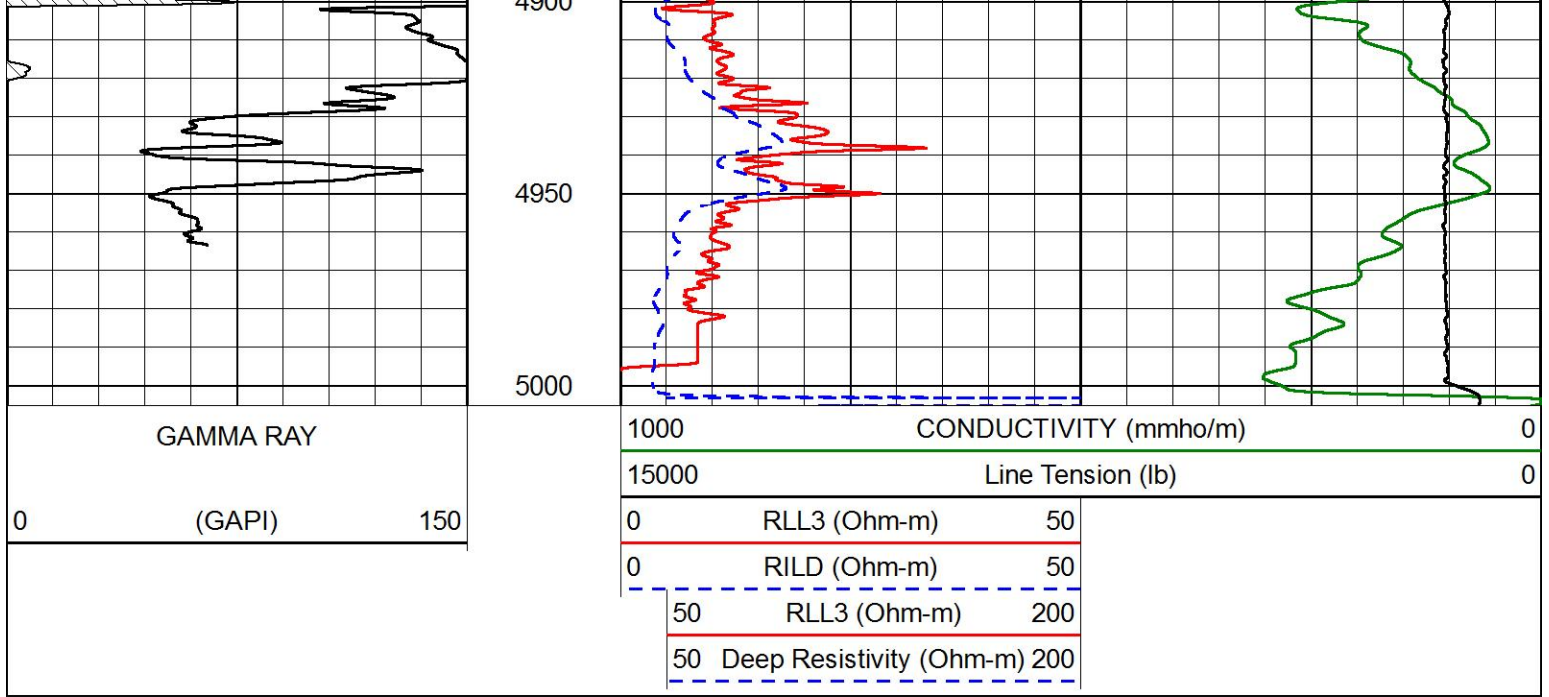








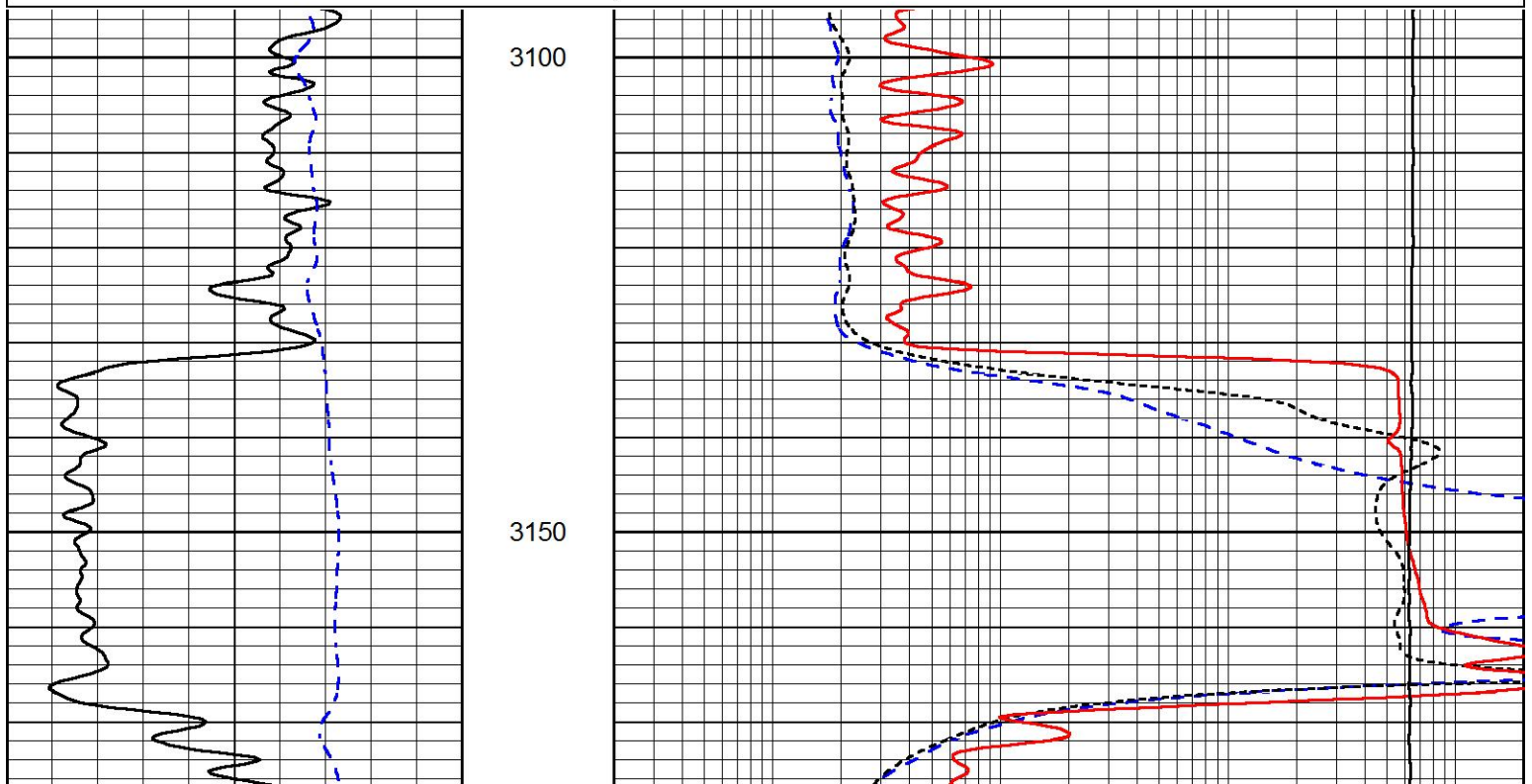
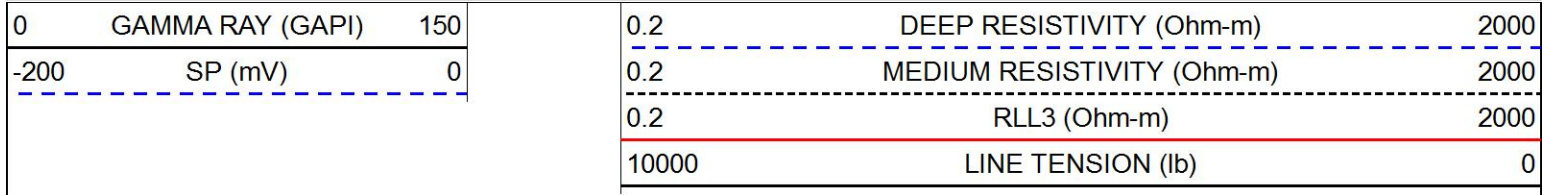


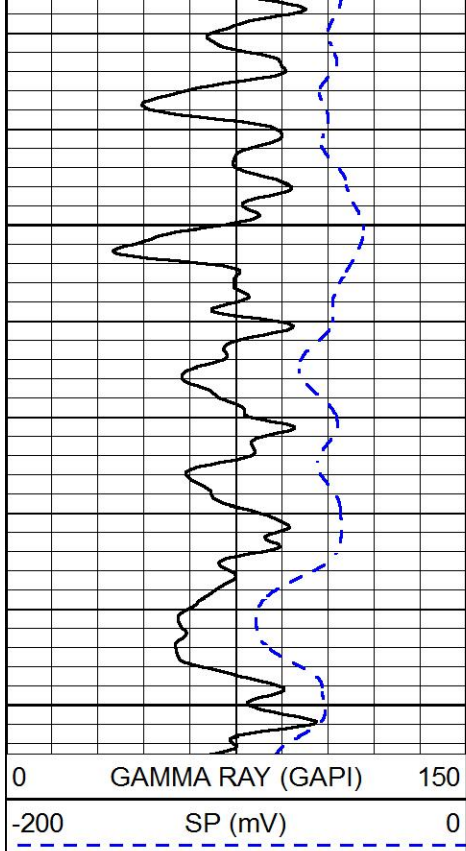


ANHYDRITE SECTION

MAIN PASS

Database File brito_shelton trust 1-33.db
 Dataset Pathname stkml/pass5.1
 Presentation Format _dil
 Dataset Creation Tue Apr 13 00:23:38 2021
 Charted by Depth in Feet scaled 1:240

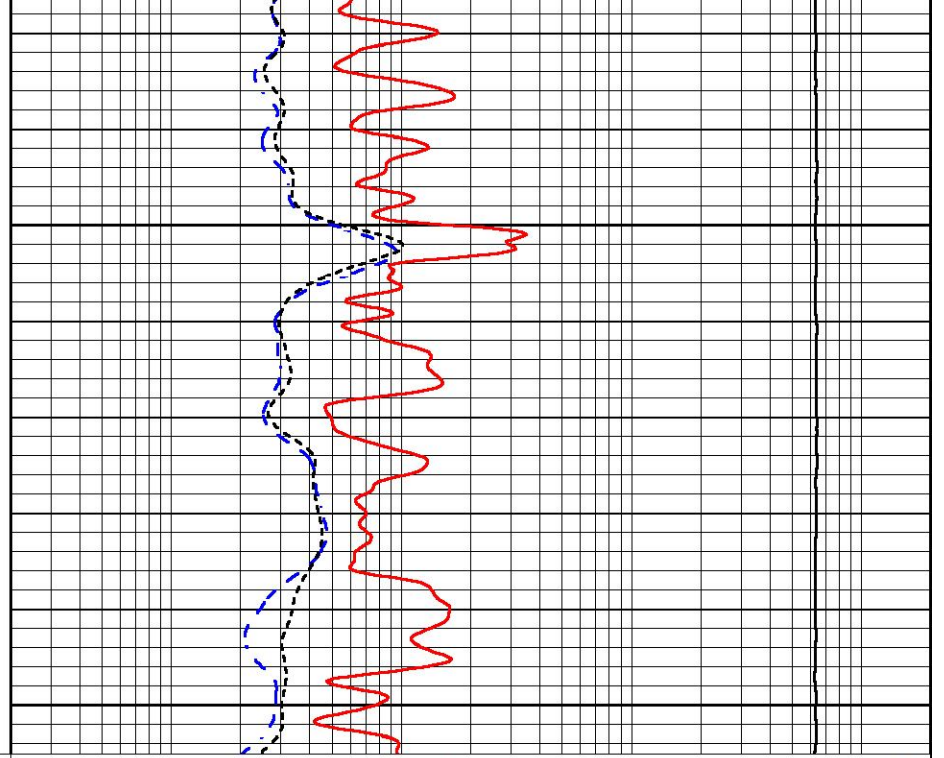




3200

3250

0 GAMMA RAY (GAPI) 150
-200 SP (mV) 0



0.2 DEEP RESISTIVITY (Ohm-m) 2000
0.2 MEDIUM RESISTIVITY (Ohm-m) 2000
0.2 RLL3 (Ohm-m) 2000
10000 LINE TENSION (lb) 0



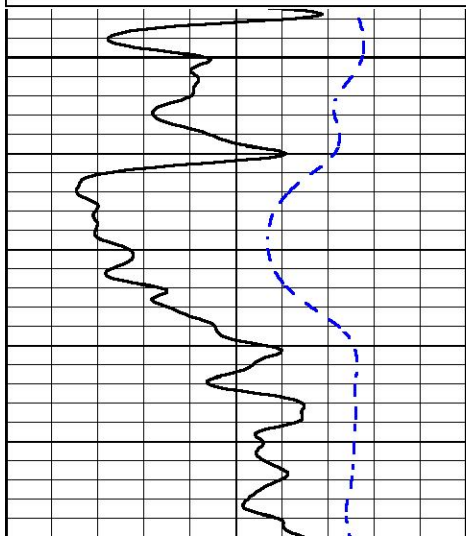
MIDWEST WIRELINE

MAIN PASS

Database File brito_shelton trust 1-33.db
Dataset Pathname stkml/pass3.1
Presentation Format _dil
Dataset Creation Mon Apr 12 23:50:40 2021
Charted by Depth in Feet scaled 1:240

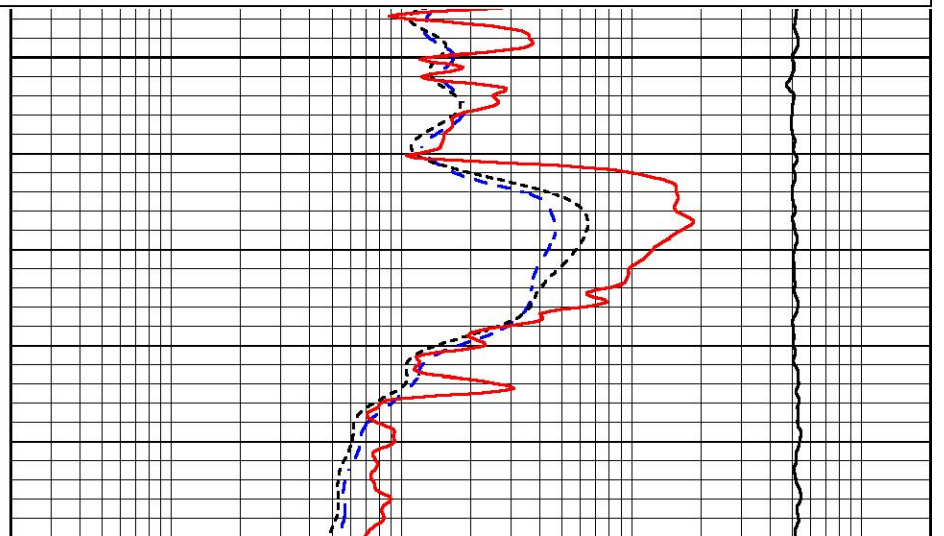
0 GAMMA RAY (GAPI) 150
-200 SP (mV) 0

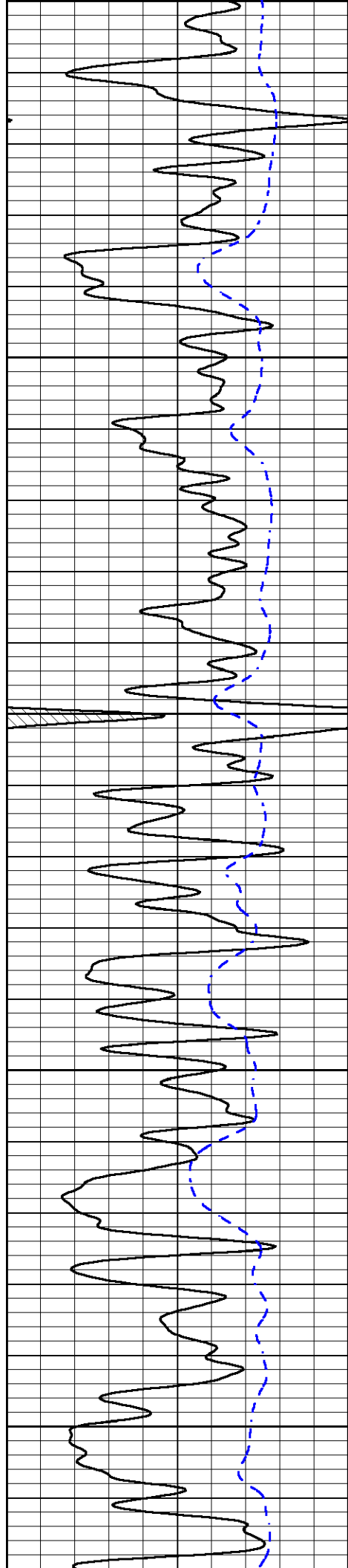
0.2 DEEP RESISTIVITY (Ohm-m) 2000
0.2 MEDIUM RESISTIVITY (Ohm-m) 2000
0.2 RLL3 (Ohm-m) 2000
10000 LINE TENSION (lb) 0



3800

3850





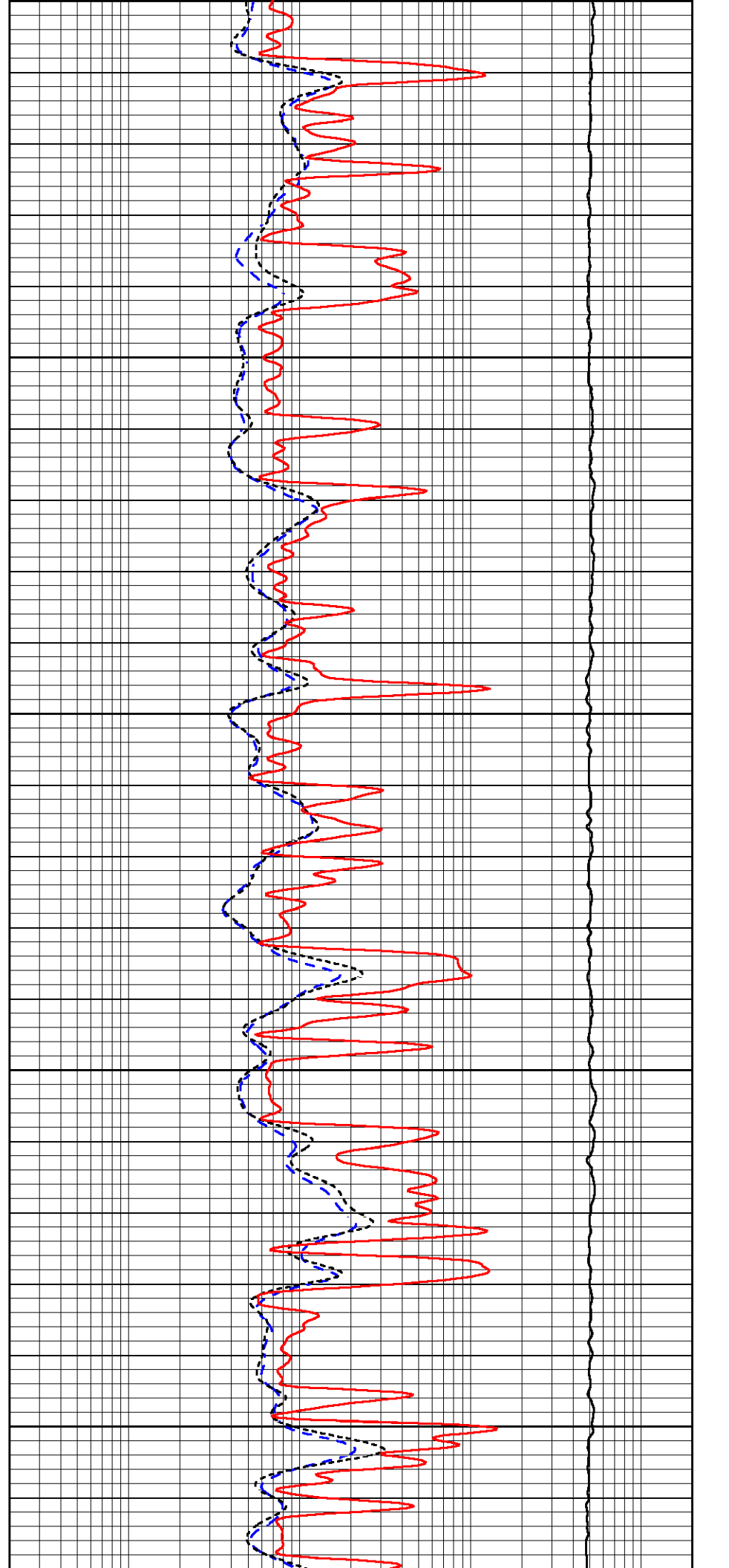
3850

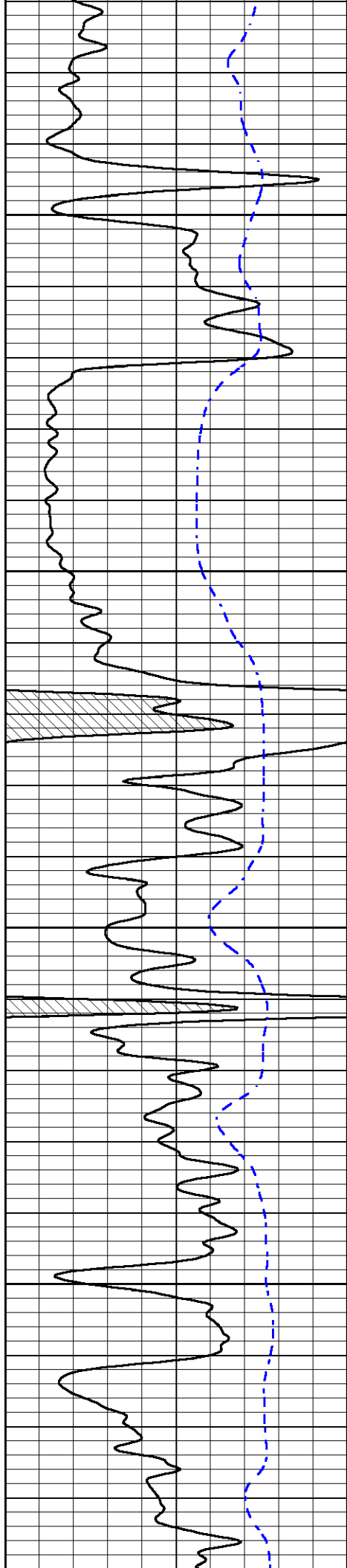
3900

3950

4000

4050



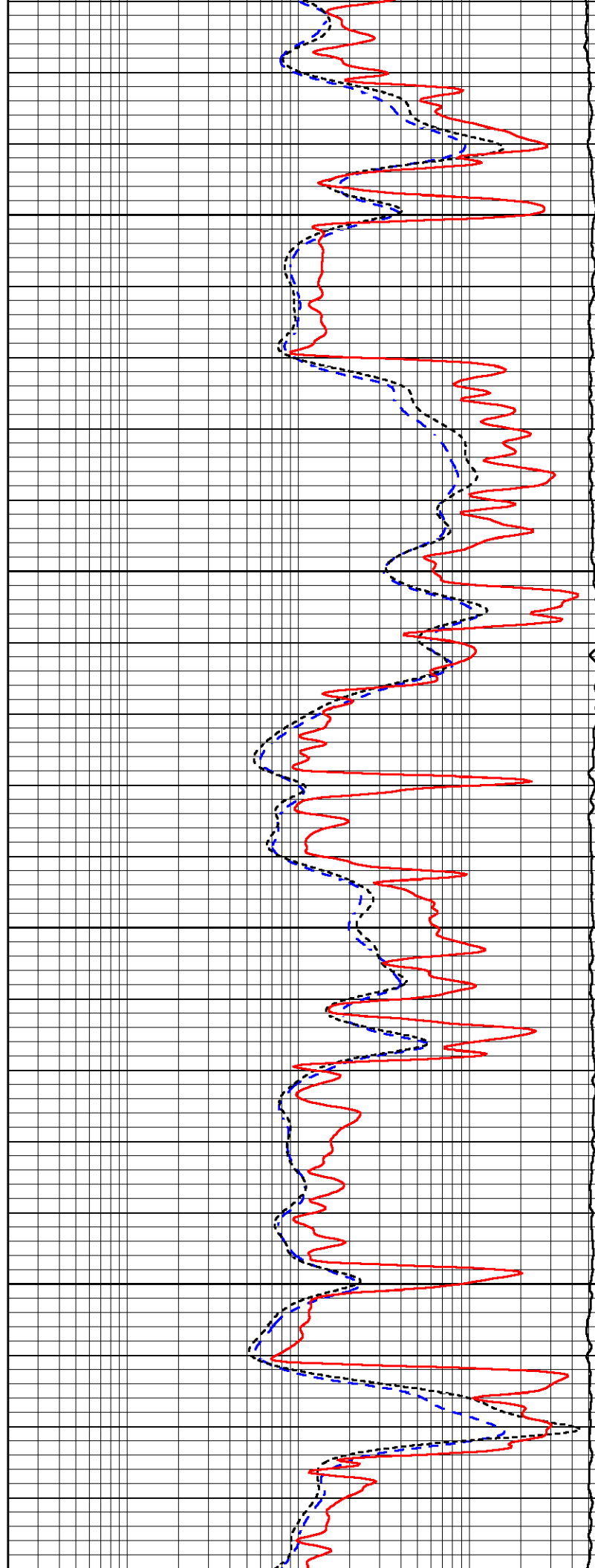


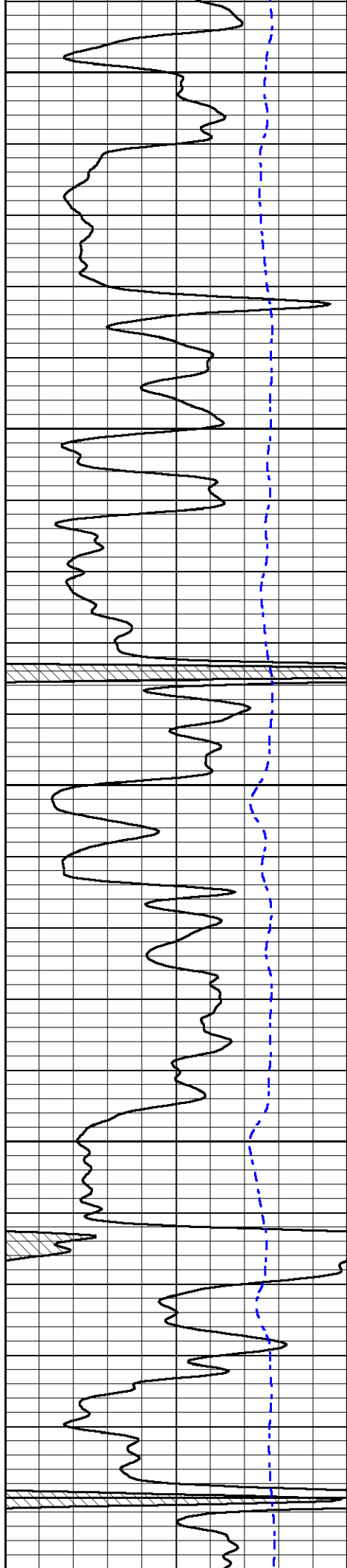
4100

4150

4200

4250





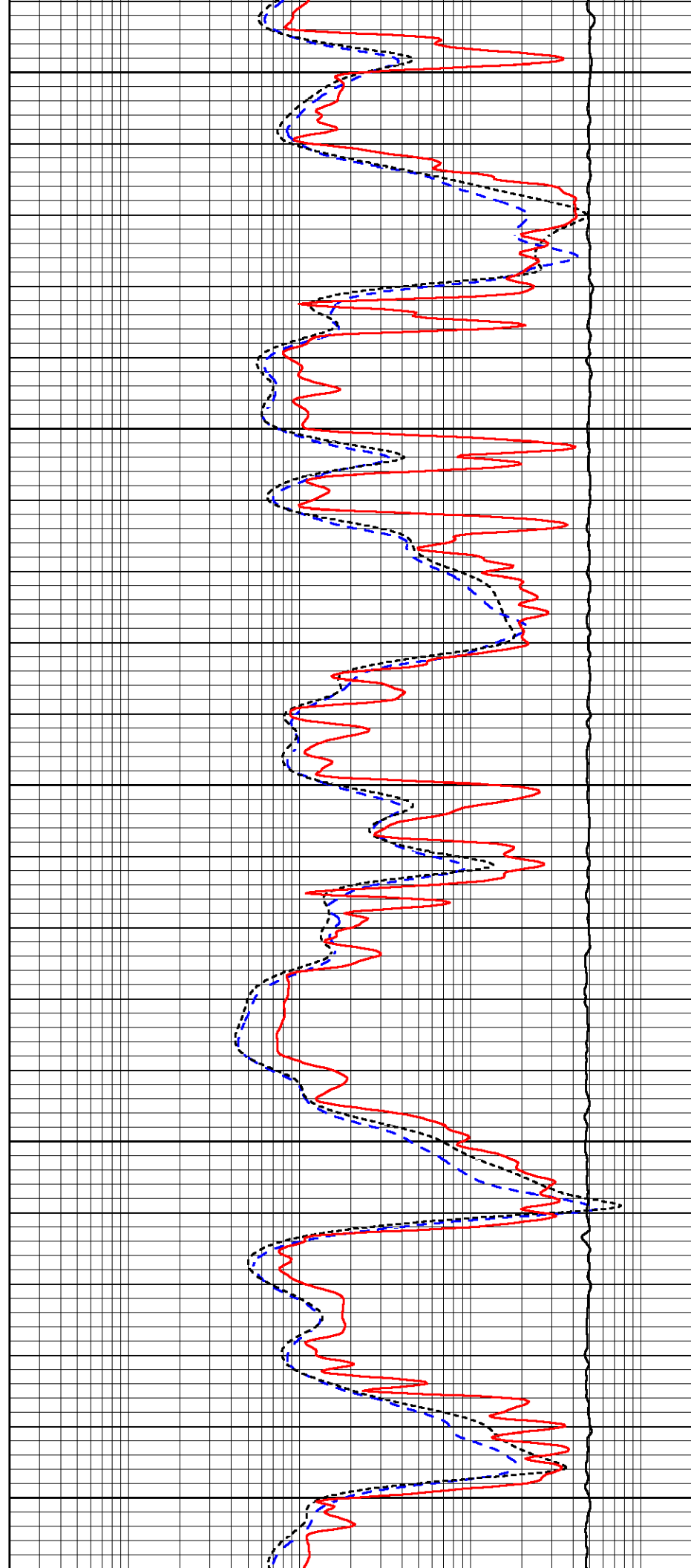
4300

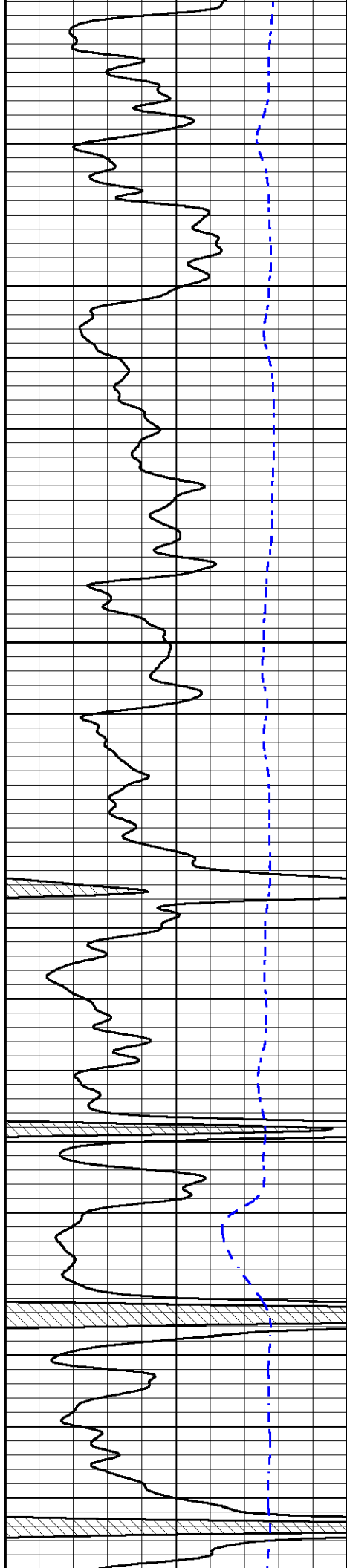
4350

4400

4450

4500



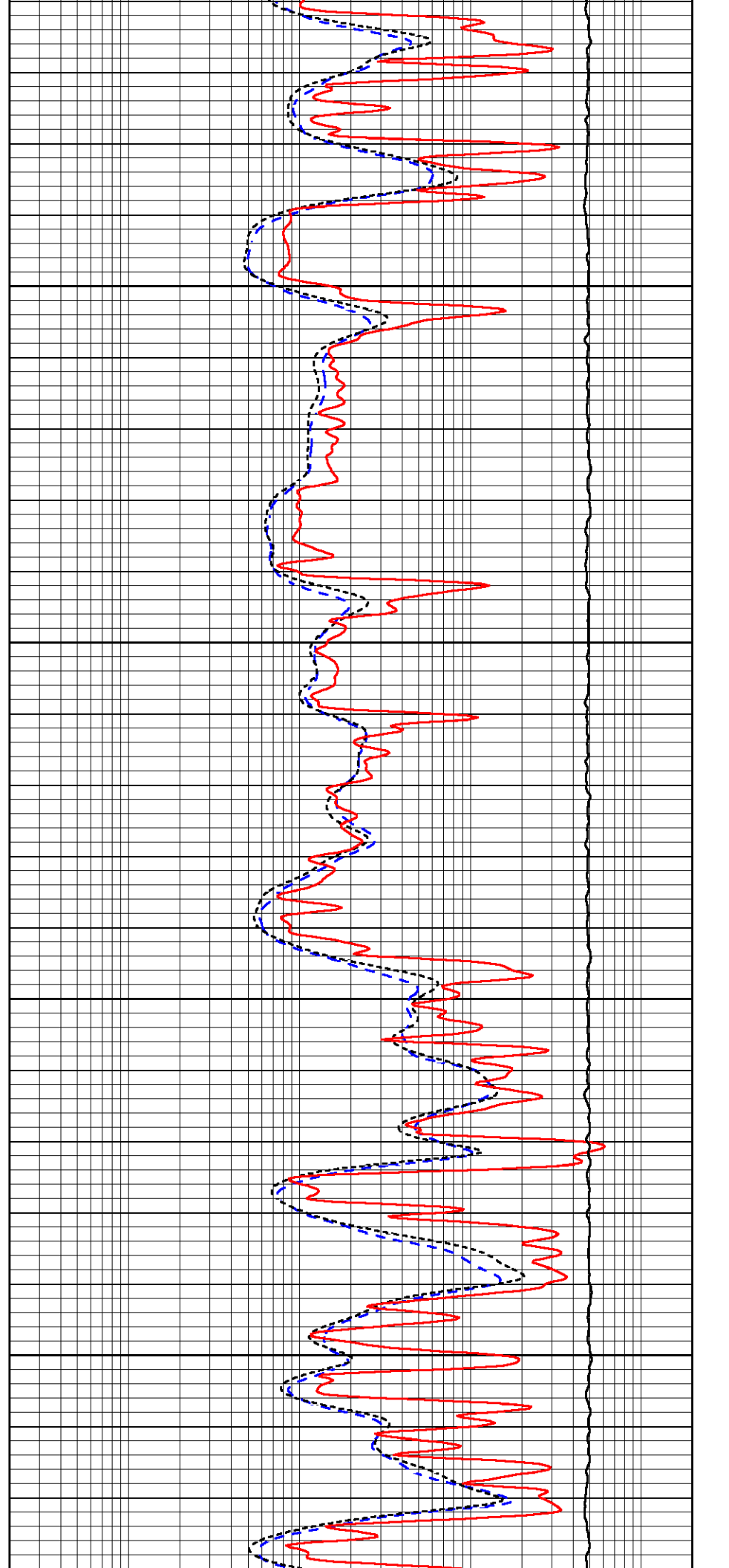


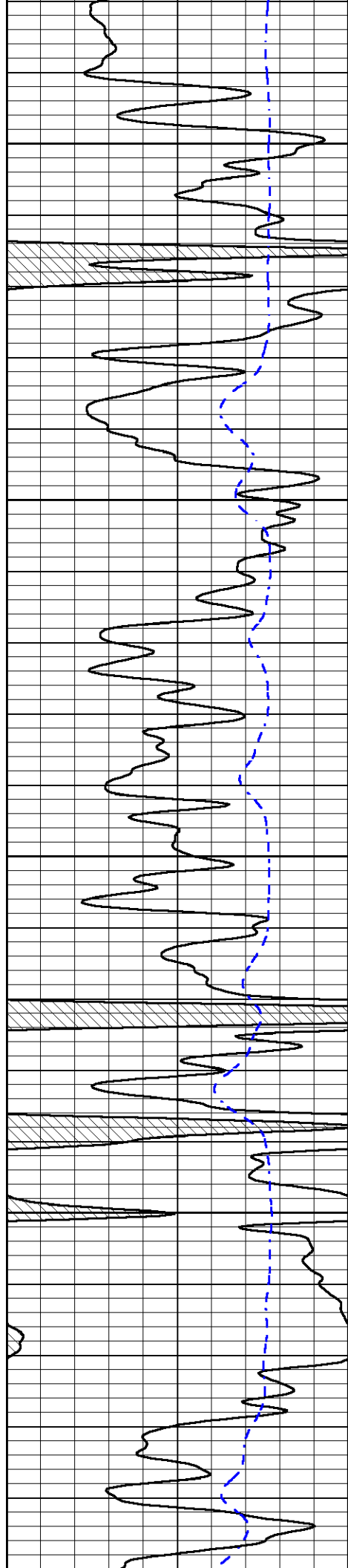
4550

4600

4650

4700





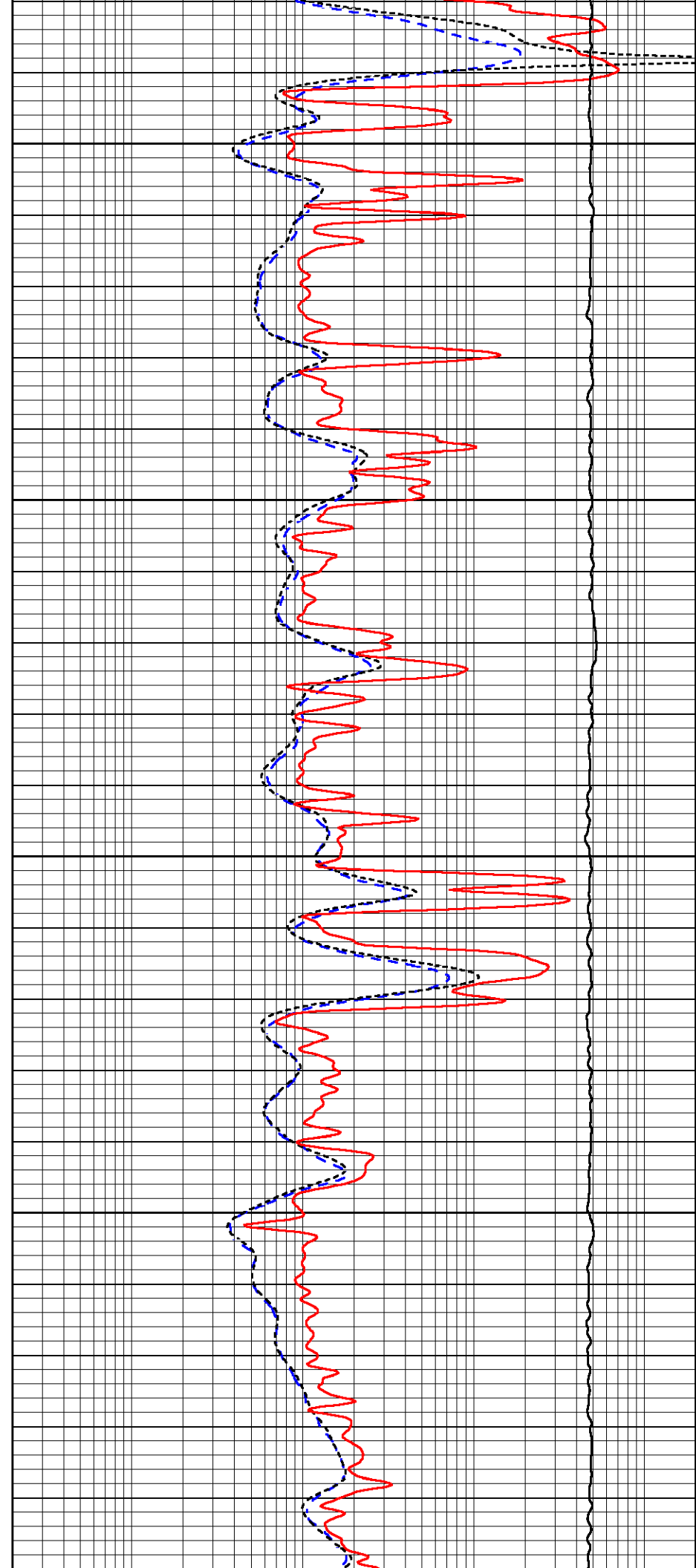
4750

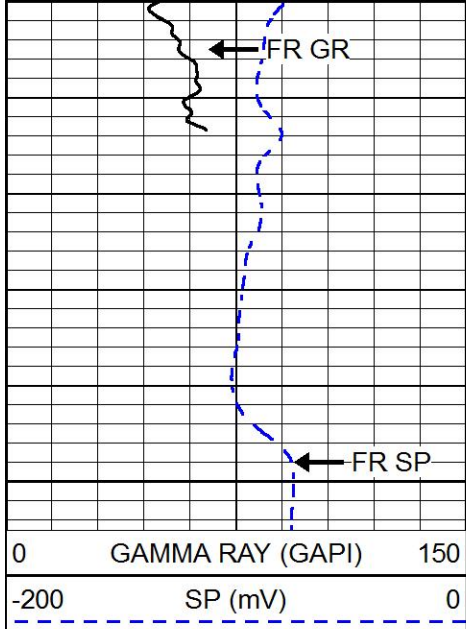
4800

4850

4900

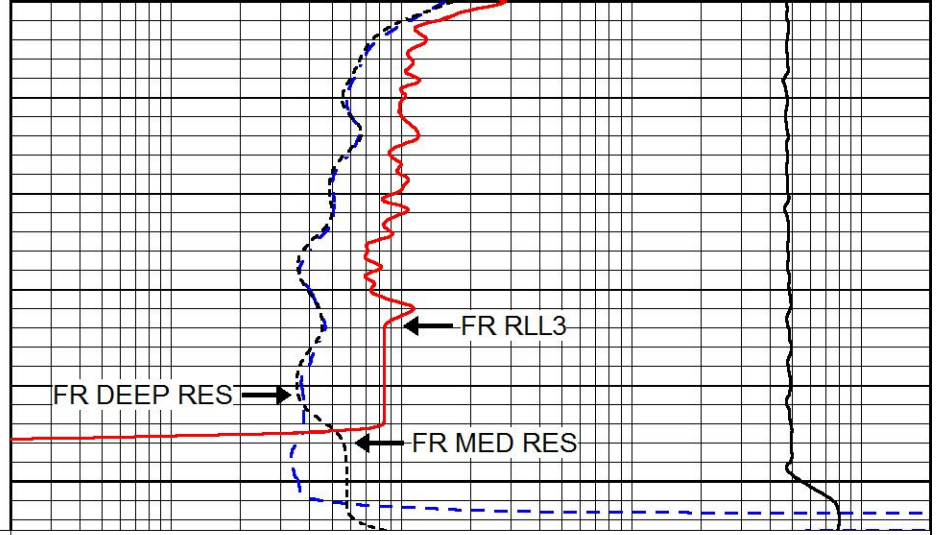
4950





4950
5000

0	GAMMA RAY (GAPI)	150
-200	SP (mV)	0



0.2	DEEP RESISTIVITY (Ohm-m)	2000
0.2	MEDIUM RESISTIVITY (Ohm-m)	2000
0.2	RLL3 (Ohm-m)	2000
10000	LINE TENSION (lb)	0

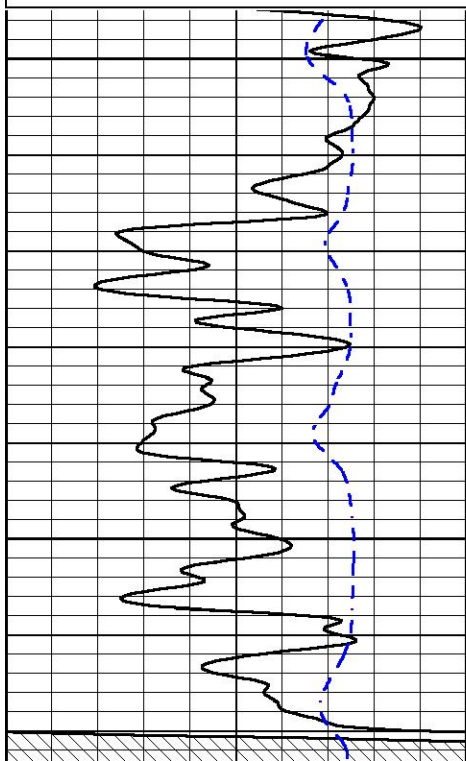


REPEAT SECTION

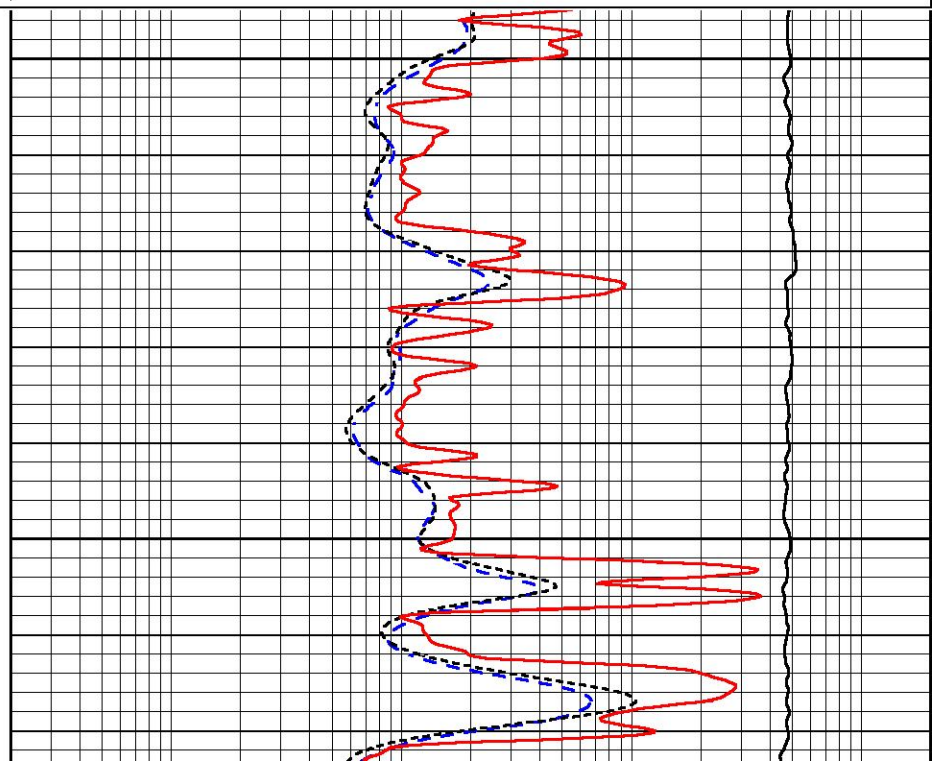
Database File brito_shelton trust 1-33.db
 Dataset Pathname stkml/pass2.1
 Presentation Format _dil
 Dataset Creation Mon Apr 12 23:33:21 2021
 Charted by Depth in Feet scaled 1:240

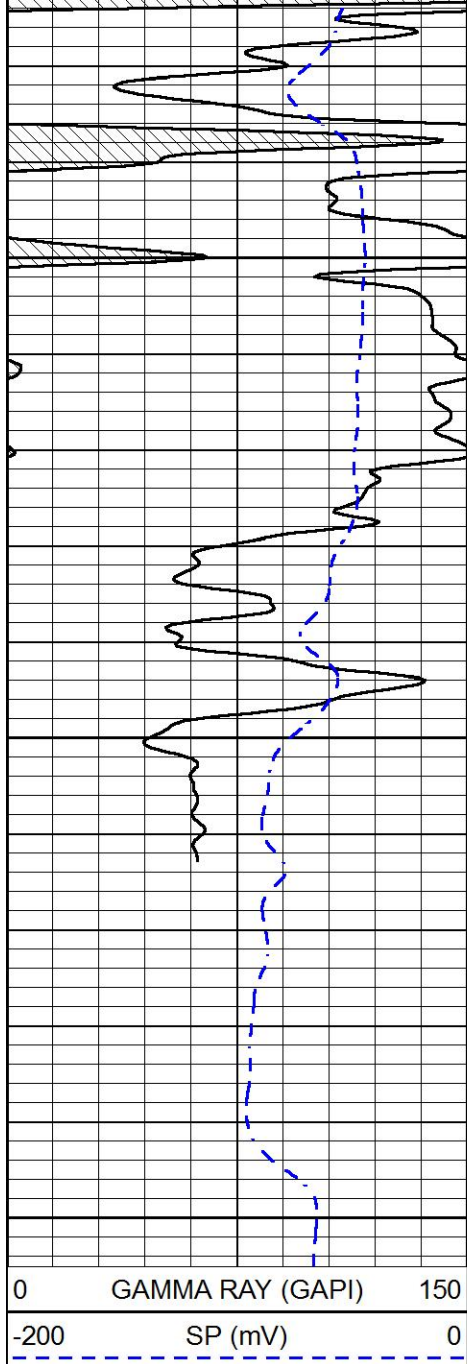
0	GAMMA RAY (GAPI)	150
-200	SP (mV)	0

0.2	DEEP RESISTIVITY (Ohm-m)	2000
0.2	MEDIUM RESISTIVITY (Ohm-m)	2000
0.2	RLL3 (Ohm-m)	2000
10000	LINE TENSION (lb)	0



4800
4850

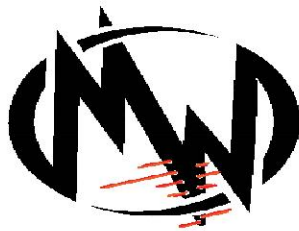
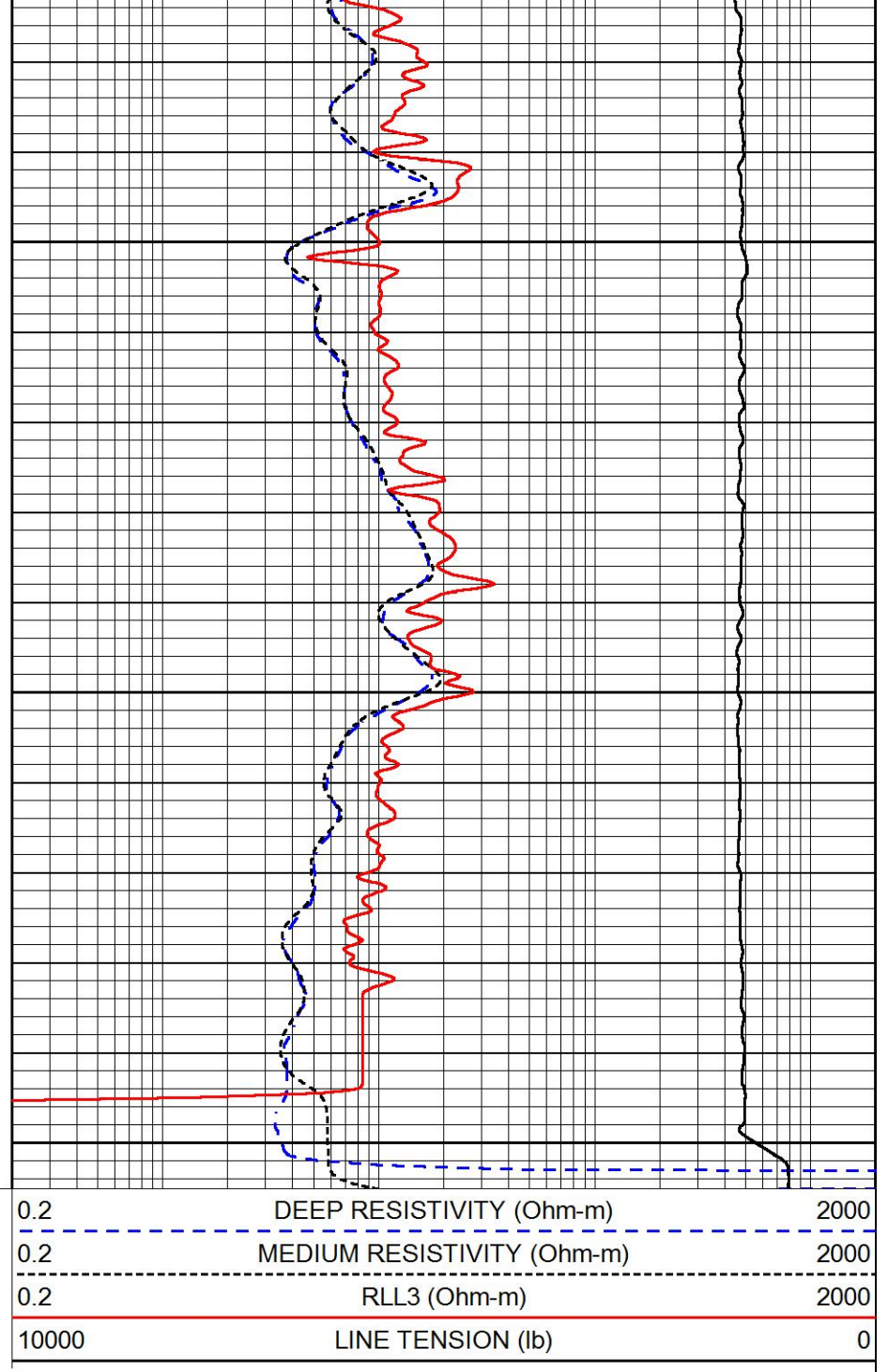




4900

4950

5000



MIDWEST WIRELINE

Company Brito Oil Company, Inc.
 Well Shelton Trust #1-33
 Field Wildcat
 County Cheyenne
 State Kansas