



MIDWEST WIRELINE

# DUAL COMP POROSITY LOG

Company Brito Oil Company, Inc.  
 Well Shelton Trust #1-33  
 Field Wildcat  
 County Cheyenne  
 State Kansas

Company Brito Oil Company, Inc.  
 Well Shelton Trust #1-33  
 Field Wildcat  
 County Cheyenne State Kansas

Location: API #: 15-023-21547-00-00  
 660' FNL & 2300' FWL  
 SEC 33 TWP 4S RGE 37W  
 Permanent Datum Ground Level Elevation 3393'  
 Log Measured From Kelly Bushing  
 Drilling Measured From Kelly Bushing  
 Other Services  
 DIL/MEL  
 K.B. 3398'  
 D.F. N/A  
 G.L. 3393'

|                        |                 |      |      |        |      |      |      |
|------------------------|-----------------|------|------|--------|------|------|------|
| Date                   | 4/12/2021       |      |      |        |      |      |      |
| Run Number             | One             |      |      |        |      |      |      |
| Type Log               | CNL/CDL         |      |      |        |      |      |      |
| Depth Driller          | 5000'           |      |      |        |      |      |      |
| Depth Logger           | 5000'           |      |      |        |      |      |      |
| Bottom Logged Interval | 4967'           |      |      |        |      |      |      |
| Top Logged Interval    | 3800'           |      |      |        |      |      |      |
| Type Fluid In Hole     | Chemical        |      |      |        |      |      |      |
| Salinity, PPM CL       | 1000            |      |      |        |      |      |      |
| Density                | 9.1             |      |      |        |      |      |      |
| Level                  | Full            |      |      |        |      |      |      |
| Max. Rec. Temp. F      | 126             |      |      |        |      |      |      |
| Operating Rig Time     | 4 Hours         |      |      |        |      |      |      |
| Equipment -- Location  | P-24 HAYS       |      |      |        |      |      |      |
| Recorded By            | D. Schmidt      |      |      |        |      |      |      |
| Witnessed By           | Saman Sharifaie |      |      |        |      |      |      |
| Borehole Record        |                 |      |      |        |      |      |      |
| Run No.                | Bit             | From | To   | Size   | Wgt. | From | To   |
| One                    | 12.25"          | 0'   | 388' | 8.625" | 23#  | 0'   | 388' |
| Two                    | 7.875"          | 388' |      |        |      |      |      |
| Casing Record          |                 |      |      |        |      |      |      |

<<< Fold Here >>>

All interpretations are opinions based on inferences from electrical or other measurements and Midwest Wireline Services, LLC cannot and does not guarantee the accuracy or correctness of any interpretation, and Midwest Wireline Services, LLC will not be liable or responsible for any loss, costs, damages, or expenses incurred or sustained by anyone resulting from any interpretation made by any of our officers, agents or employees.

Comments

N/A DENOTES NOT AVAILABLE OR NON-APPLICABLE.

Bird City,  
 2 East to 31 Rd, 6 South to H Rd 1/2 East,  
 South into

Log Measured From: Kelly Bushing 5 Ft. Above Permanent Datum

THANK YOU FOR USING MIDWEST WIRELINE LLC  
 785-625-3858

|                            |           |                                  |                    |
|----------------------------|-----------|----------------------------------|--------------------|
| Your Midwest Wireline Crew |           | This Log Record Was Witnessed By |                    |
| Engineer: D. Schmidt       | Operator: | Primary Witness: Saman Sharifaie | Secondary Witness: |
| Operator:                  | Operator: | Secondary Witness:               | Secondary Witness: |
| Operator:                  |           | Secondary Witness:               |                    |

|          |             |           |             |             |           |             |
|----------|-------------|-----------|-------------|-------------|-----------|-------------|
| Case No. | Offset (ft) | Schematic | Description | Length (ft) | O.D. (in) | Weight (lb) |
|----------|-------------|-----------|-------------|-------------|-----------|-------------|

| Sensor             | Offset (ft)             | Schematic | Description  | Length (ft) | O.D. (in) | Weight (lb) |
|--------------------|-------------------------|-----------|--|-------------|-----------|-------------|
| GR                 | 44.50                   |           | GR-M&W (233-M&W)                                   | 3.00        | 3.50      | 50.00       |
| CNLSC<br>CNSSC     | 41.40<br>40.65          |           | CNT-M&W (207-MW)                                   | 5.50        | 3.50      | 100.00      |
| LSD<br>DCAL<br>SSD | 32.35<br>32.33<br>31.85 |           | CDL-M&W (817-947)                                  | 8.50        | 4.00      | 250.00      |
| MCAL<br>MI<br>MN   | 20.87<br>20.87<br>20.87 |           | ML-PSI UDM ML (UDM-01)<br>Stackable Microlog Tools | 11.50       | 4.00      | 215.00      |
| RLL3F<br>RLL3      | 15.80<br>15.80          |           | DIL-PSI HIGH TEMP (952-828)                        | 18.50       | 3.50      | 220.00      |
| CILD               | 8.00                    |           |  |             |           |             |
| CILM               | 4.70                    |           |  |             |           |             |
| SP                 | 0.20                    |           |  |             |           |             |

Dataset: brito\_shelton trust 1-33.db: field/well/stkml/pass3.1  
 Total length: 47.00 ft  
 Total weight: 835.00 lb  
 O.D.: 4.00 in

# Log Variables

DatabaseC:\ProgramData\Warrior\Data\brito\_shelton trust 1-33.db  
 Dataset field/well/stkml/pass3.1/\_vars\_

## Top - Bottom

|           |              |                  |                   |                |                  |       |                  |
|-----------|--------------|------------------|-------------------|----------------|------------------|-------|------------------|
| A         | BOREID<br>in | BOTTEMP<br>degF  | CASEOD<br>in      | CASETHCK<br>in | FLUIDDEN<br>g/cc | M     | MATRXDEN<br>g/cc |
| 1         | 7.875        | 126              | 5.5               | 0              | 1                | 2     | 2.71             |
| NPORSEL   | PERFS        | SNDERR<br>mmho/m | SNDERRM<br>mmho/m | SPSHIFT<br>mV  | SRFTEMP<br>degF  | SZCOR | TDEPTH<br>ft     |
| Limestone | No           | 0                | 0                 | 210            | 60               | Off   | 5000             |

## Variable Description

A : Cement Factor (a)  
 BOREID : Borehole I.D.  
 BOTTEMP : Bottom Hole Temperature  
 CASEOD : Casing O.D.  
 CASETHCK : Casing Thickness  
 FLUIDDEN : Fluid Density  
 M : Cement Exp (m)  
 MATRXDEN : Matrix Density

NPORSEL : Neutron Porosity Curve Select  
 PERFS : Perforation Flag  
 SNDERR : Deep Sonde Error Correction  
 SNDERRM : Medium Sonde Error Correction  
 SPSHIFT : S.P. Baseline Offset  
 SRFTEMP : Surface Temperature  
 SZCOR : CN Size Cor. ?  
 TDEPTH : Total Depth



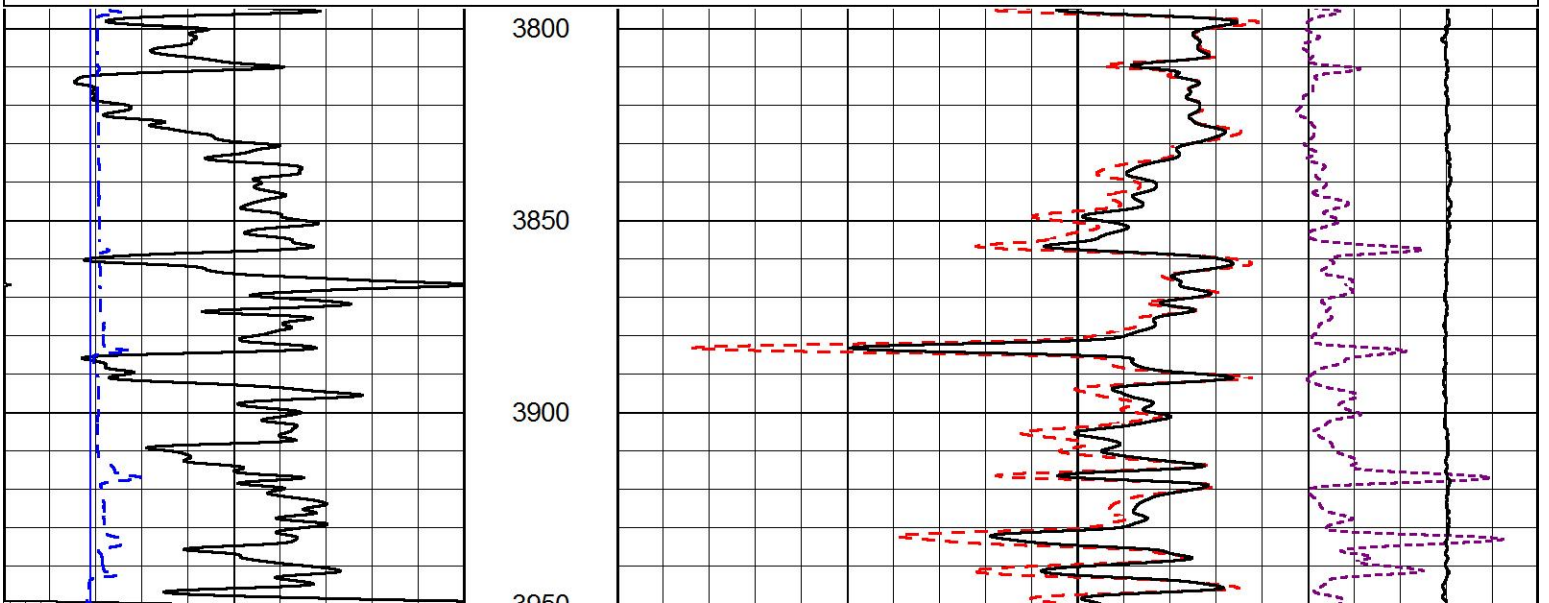
## 2" SCALE BULK DENSITY

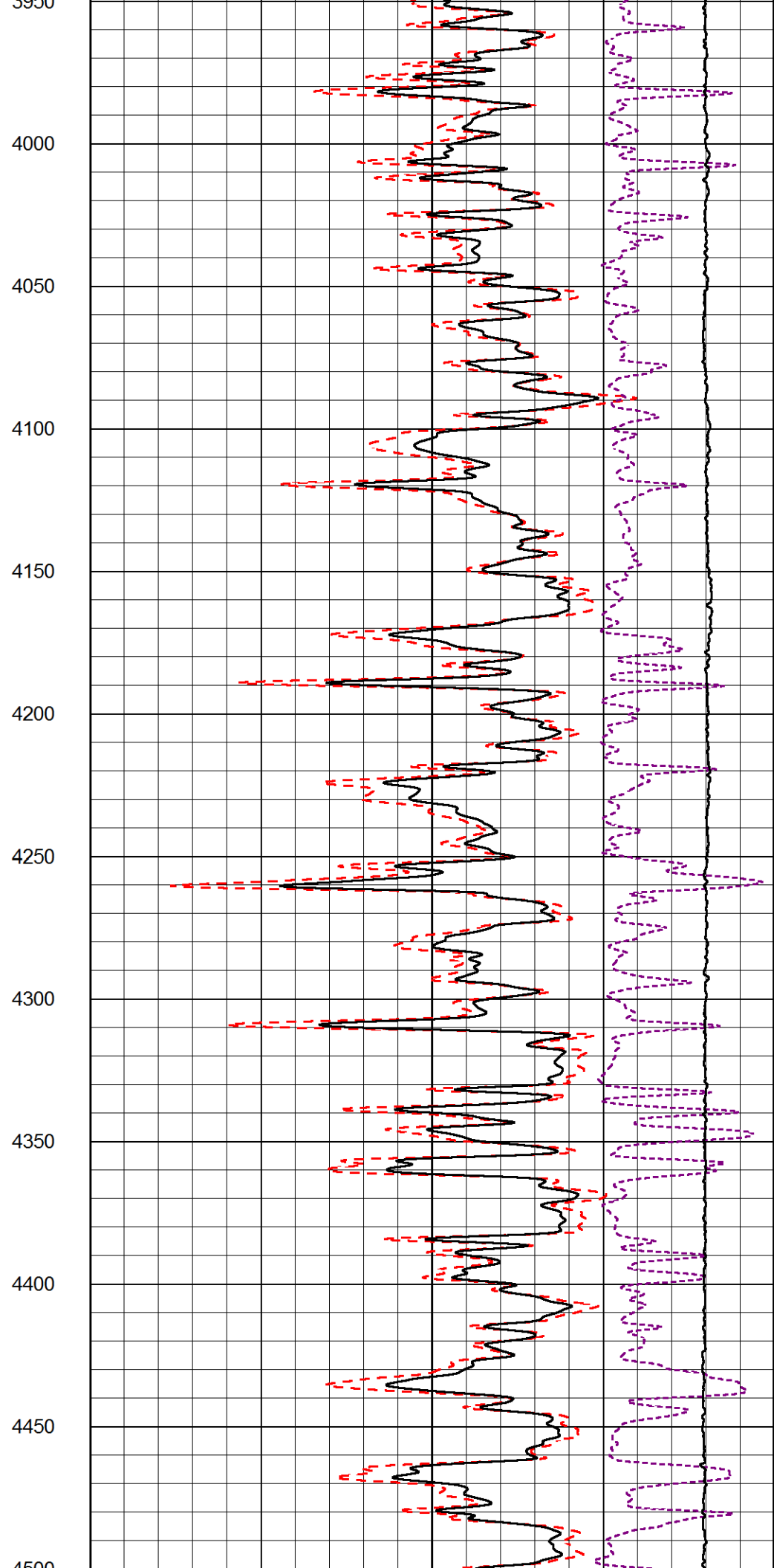
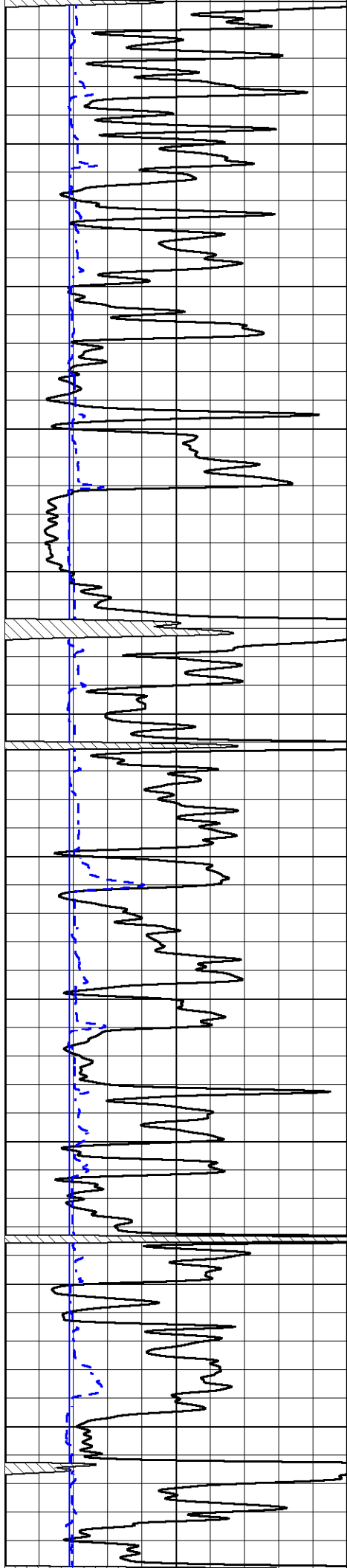
### MAIN PASS

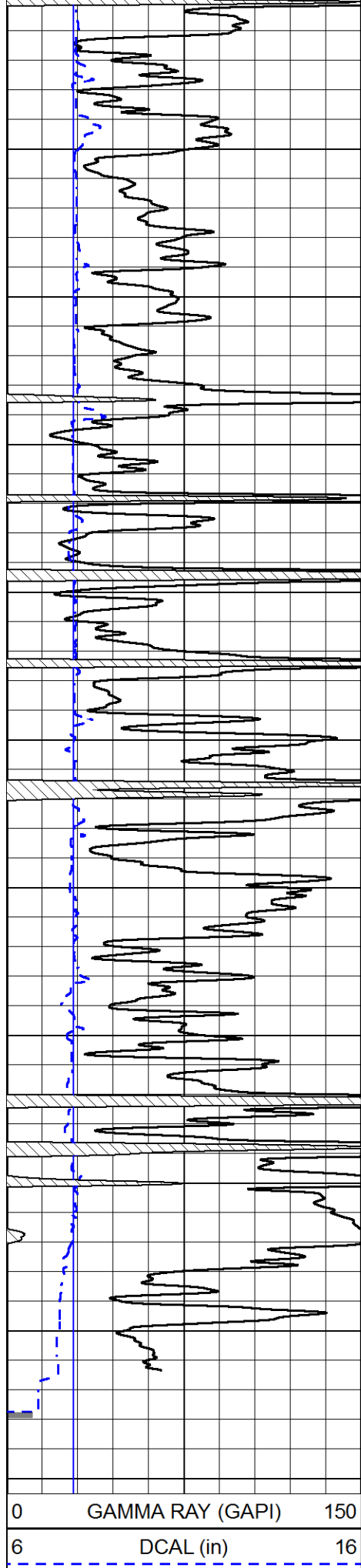
Database File      brito\_shelton trust 1-33.db  
 Dataset Pathname  stkml/pass4.1  
 Presentation Format \_cdl  
 Dataset Creation  Mon Apr 12 23:50:53 2021  
 Charted by        Depth in Feet scaled 1:600

|   |                  |     |
|---|------------------|-----|
| 0 | GAMMA RAY (GAPI) | 150 |
| 6 | DCAL (in)        | 16  |

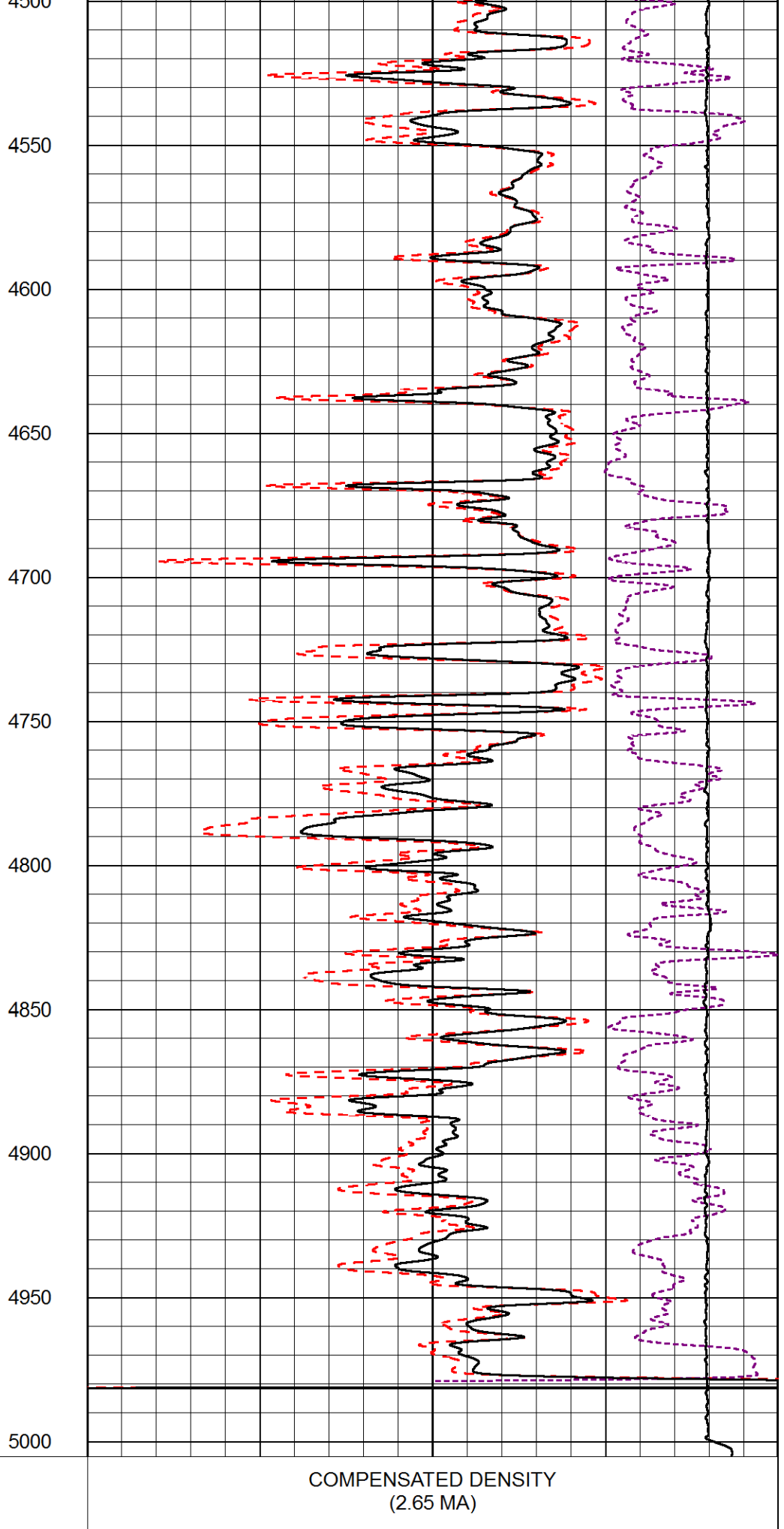
|                                  |                        |
|----------------------------------|------------------------|
| COMPENSATED DENSITY<br>(2.65 MA) |                        |
| 30                               | (pu) -10               |
| 2                                | BULK DENSITY (g/cc) 3  |
| 15000                            | LINE TENSION (lb) 0    |
| -0.25                            | CORRECTION (g/cc) 0.25 |







0 GAMMA RAY (GAPI) 150  
 6 DCAL (in) 16



30 COMPENSATED DENSITY (2.65 MA) -10  
 2 BULK DENSITY (g/cc) 3

15000

LINE TENSION (lb)

0

-0.25 CORRECTION (g/cc)

0.25

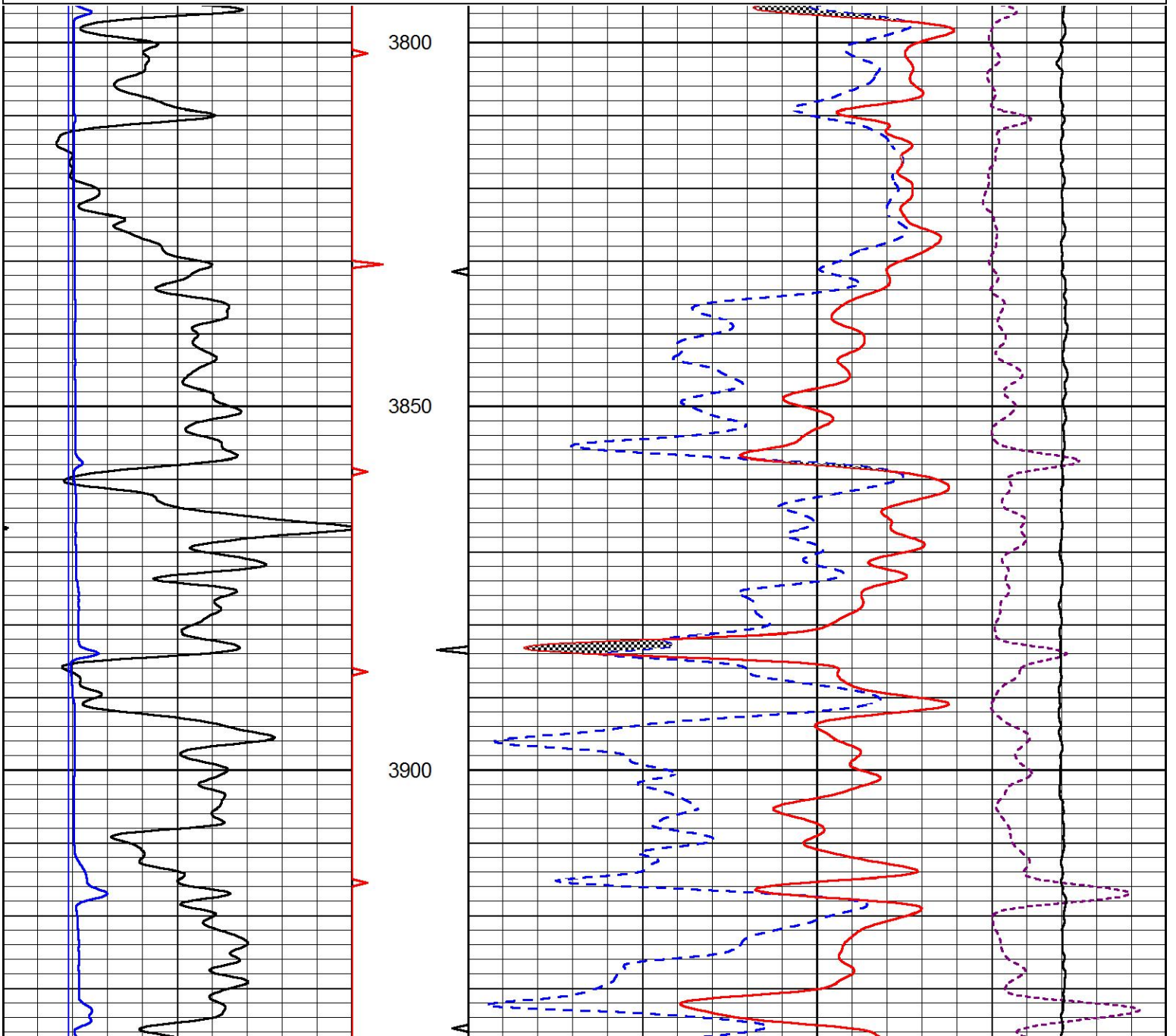


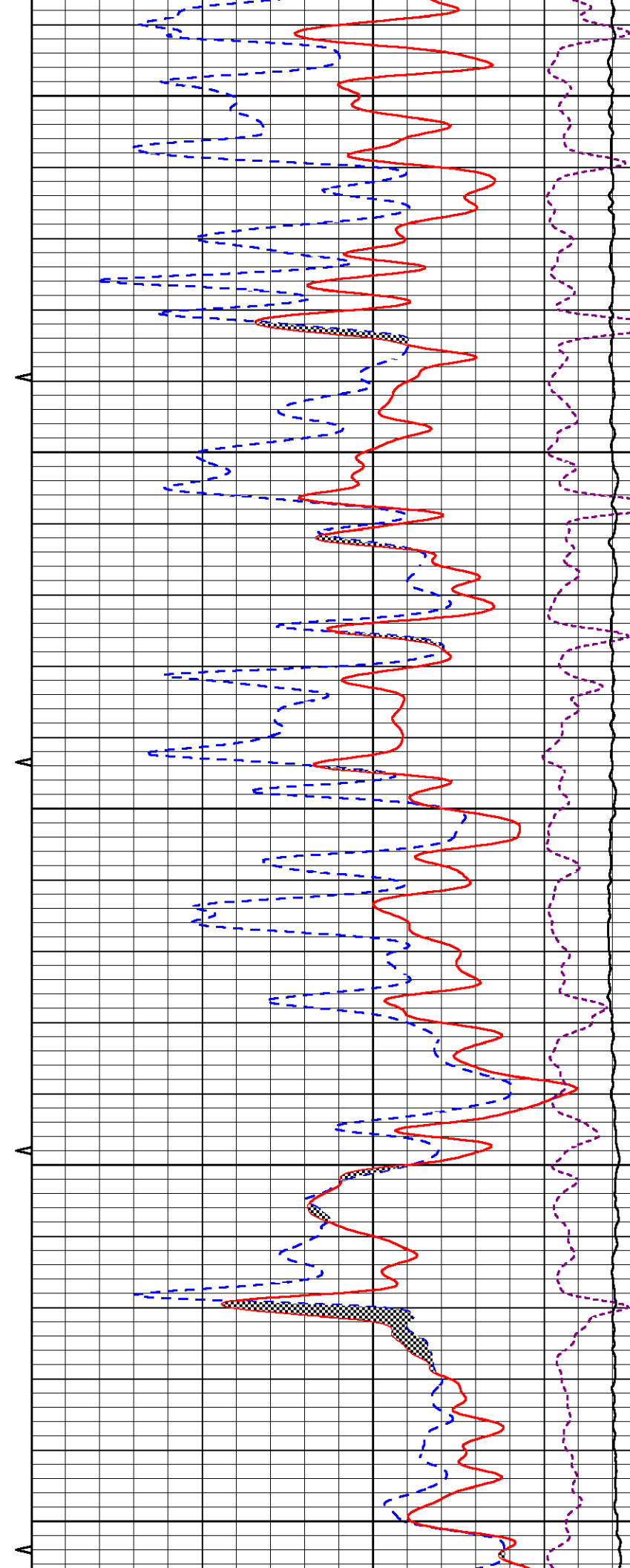
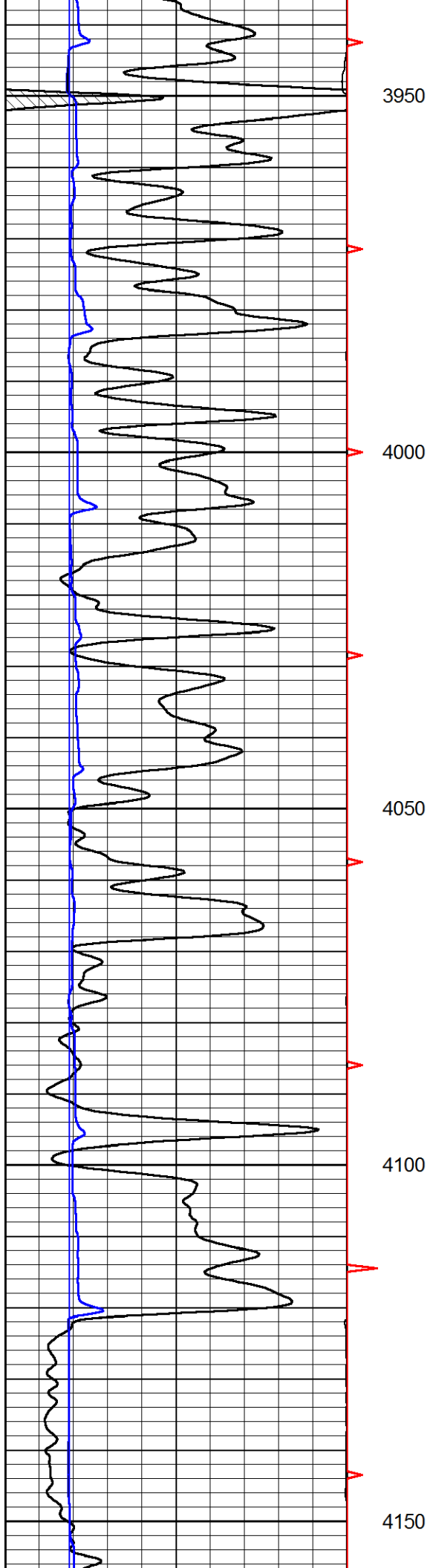
# MAIN PASS

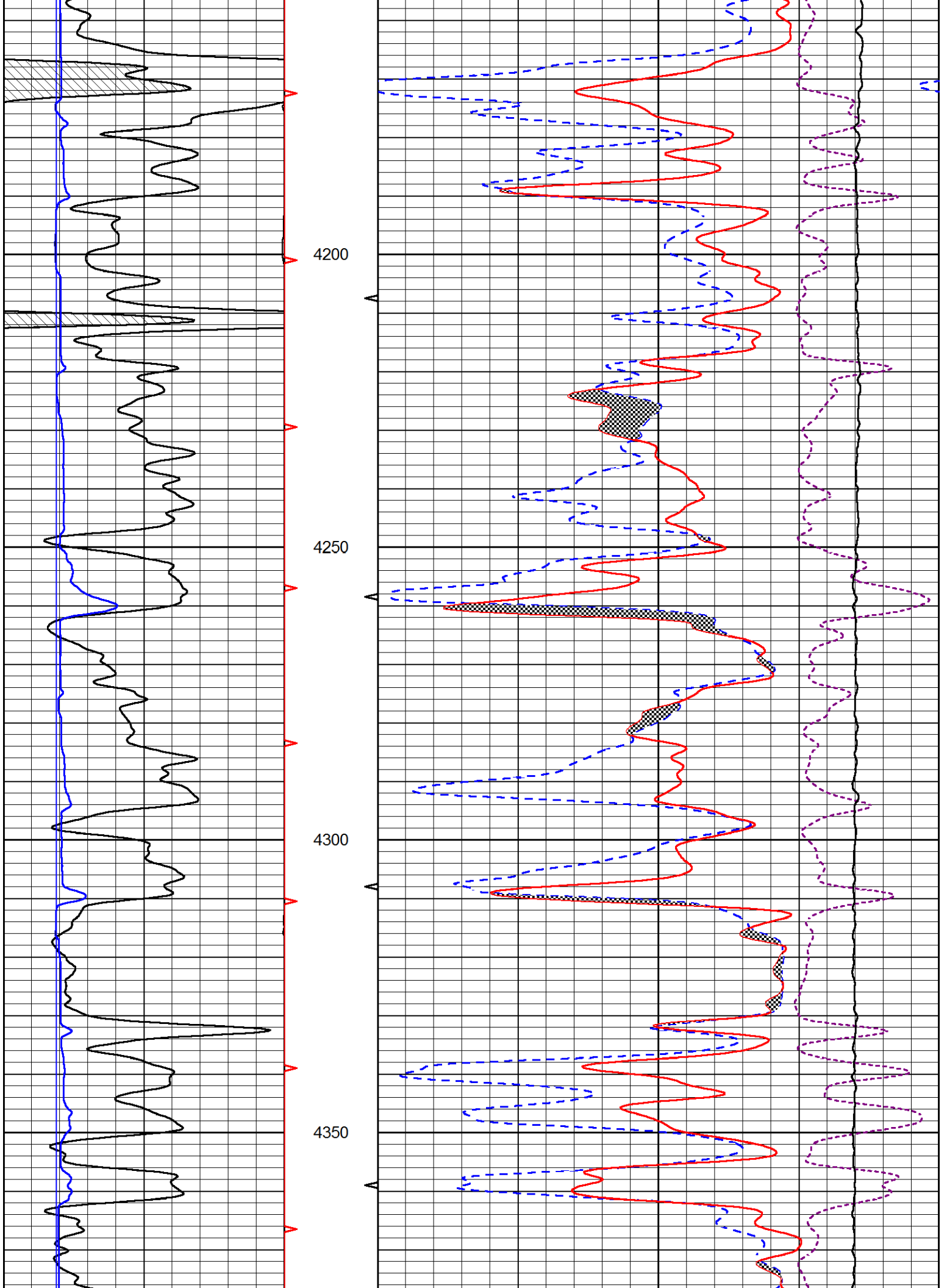
Database File      brito\_shelton trust 1-33.db  
 Dataset Pathname    stkml/pass3.1  
 Presentation Format    \_CNDLS~1  
 Dataset Creation      Mon Apr 12 23:50:40 2021  
 Charted by            Depth in Feet scaled 1:240

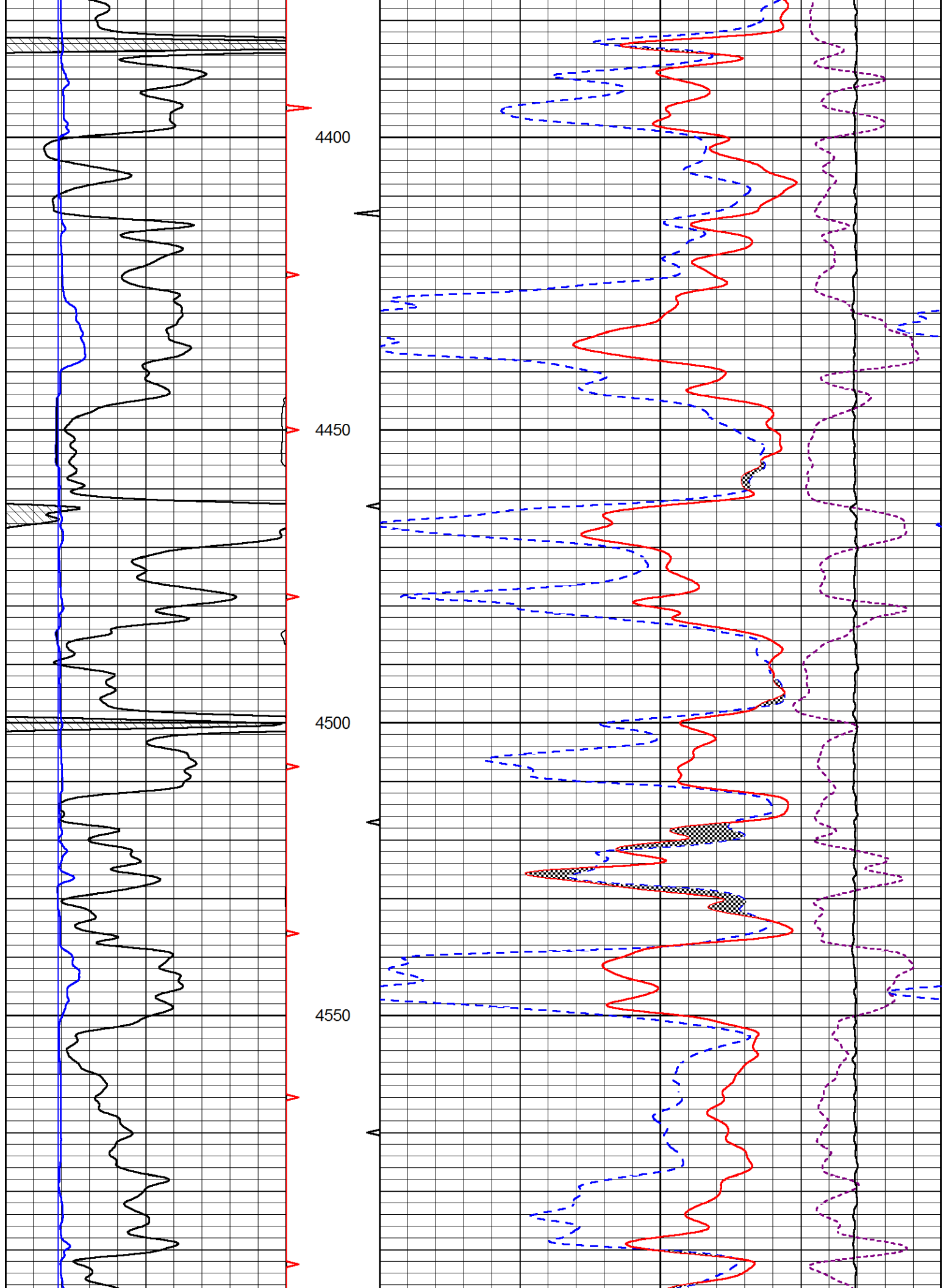
|   |                  |     |
|---|------------------|-----|
| 0 | GAMMA RAY (GAPI) | 150 |
| 6 | DCAL (in)        | 16  |

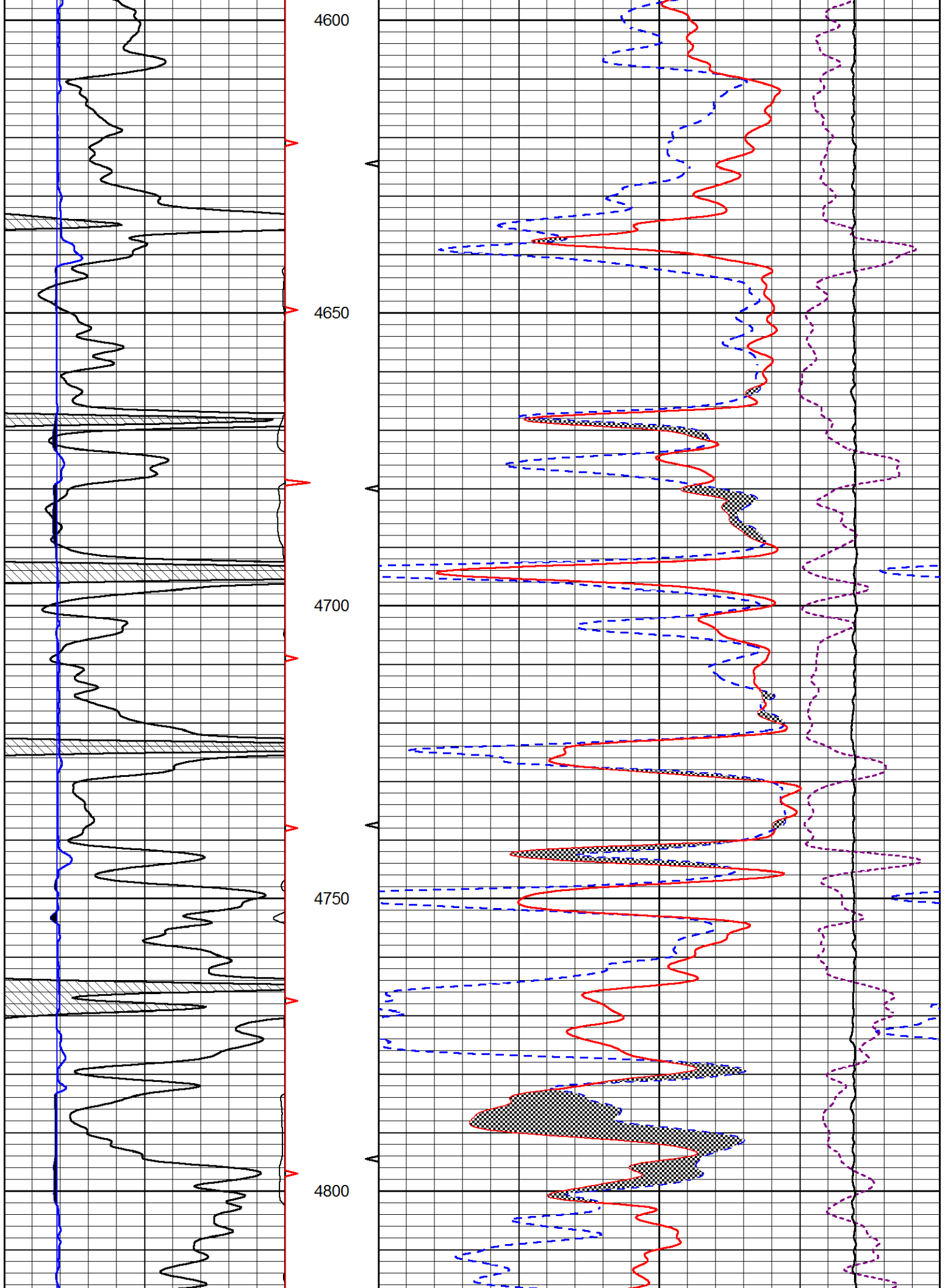
|       |                   |      |
|-------|-------------------|------|
| 30    | CNPOR (pu)        | -10  |
| 30    | DPOR (pu)         | -10  |
| 10000 | LINE TENSION (lb) | 0    |
| -0.25 | CORRECTION (g/cc) | 0.25 |

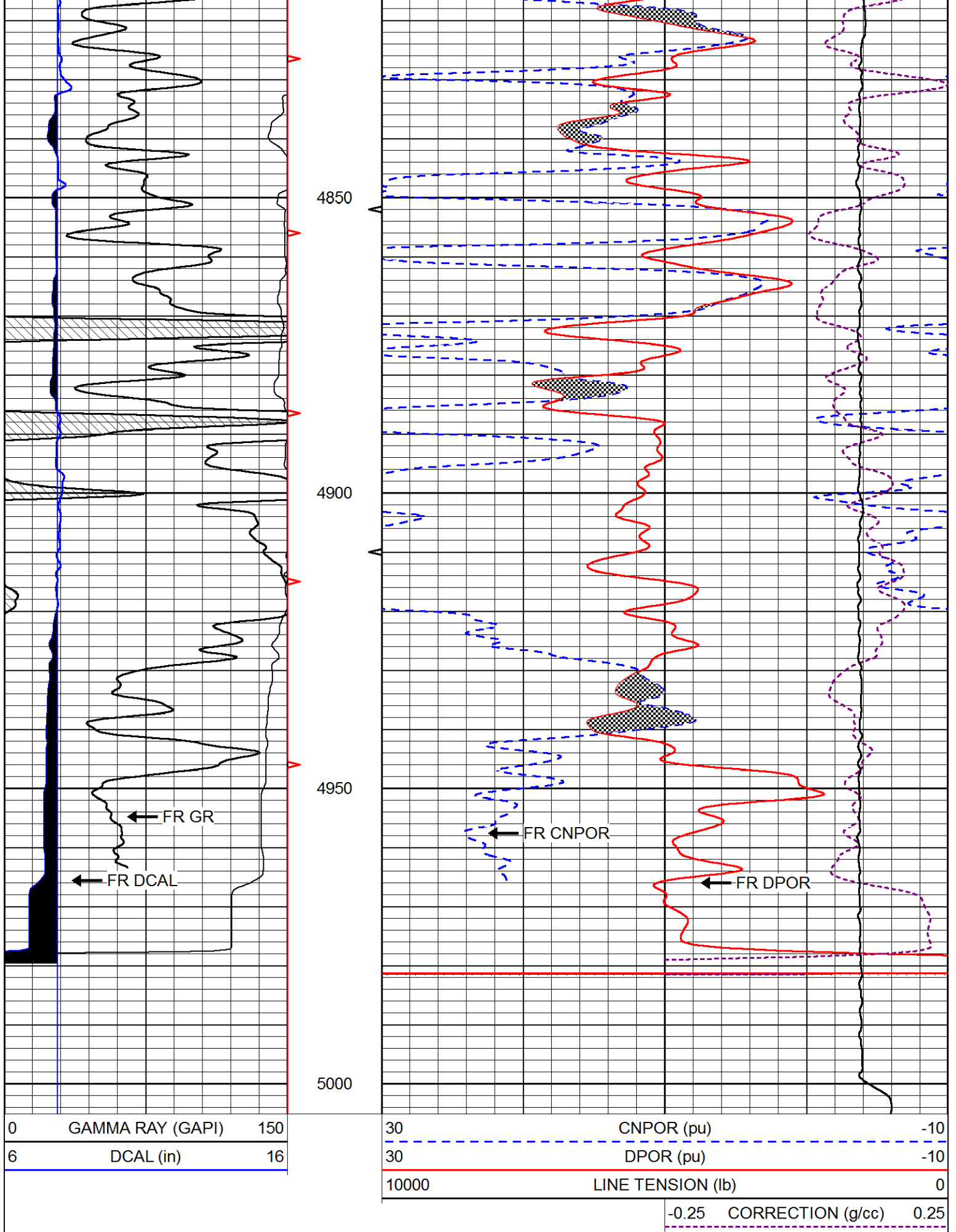












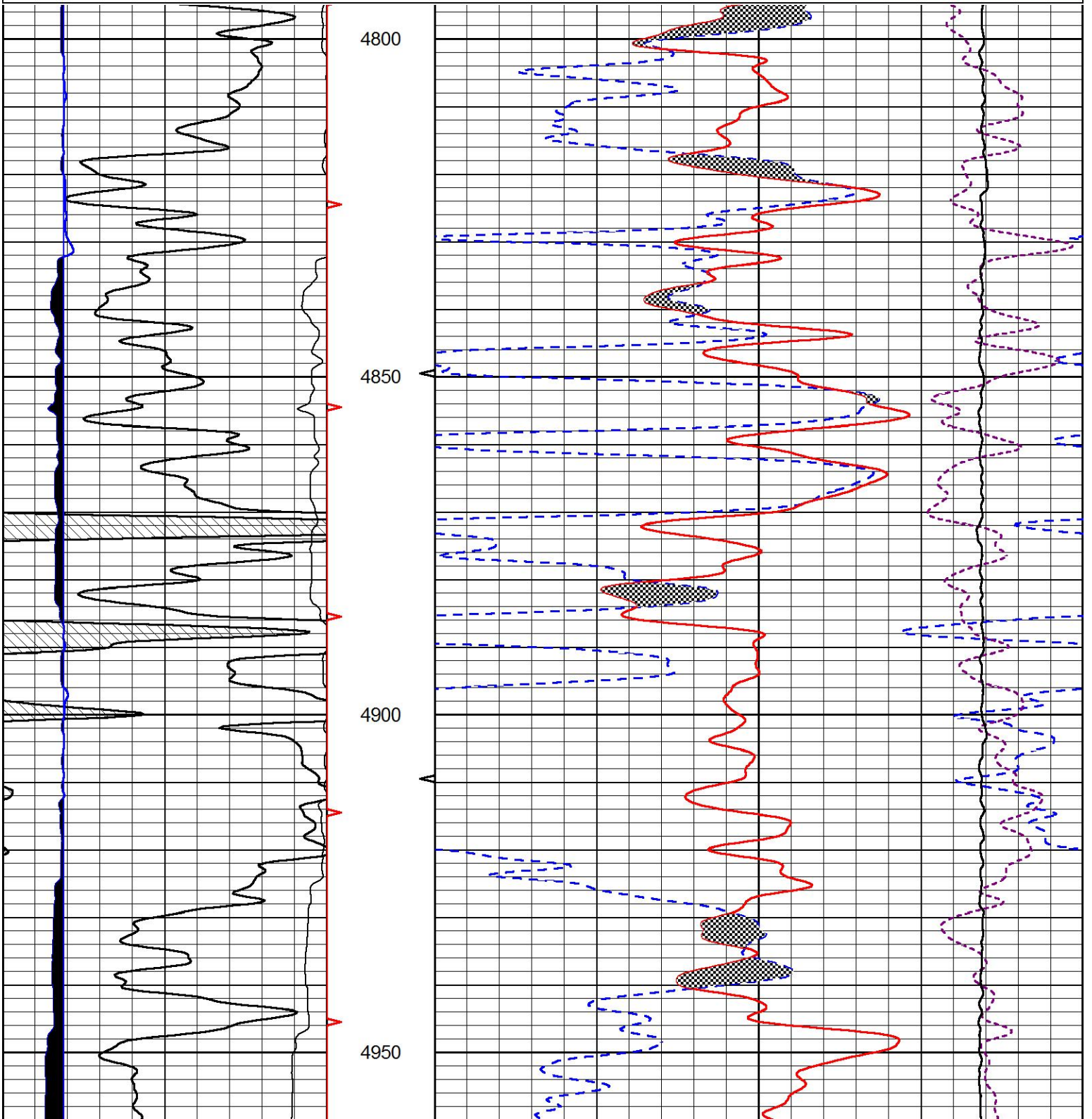


# REPEAT SECTION

Database File      brito\_shelton trust 1-33.db  
 Dataset Pathname    stkml/pass2.1  
 Presentation Format    \_CNDLS~1  
 Dataset Creation      Mon Apr 12 23:33:21 2021  
 Charted by            Depth in Feet scaled 1:240

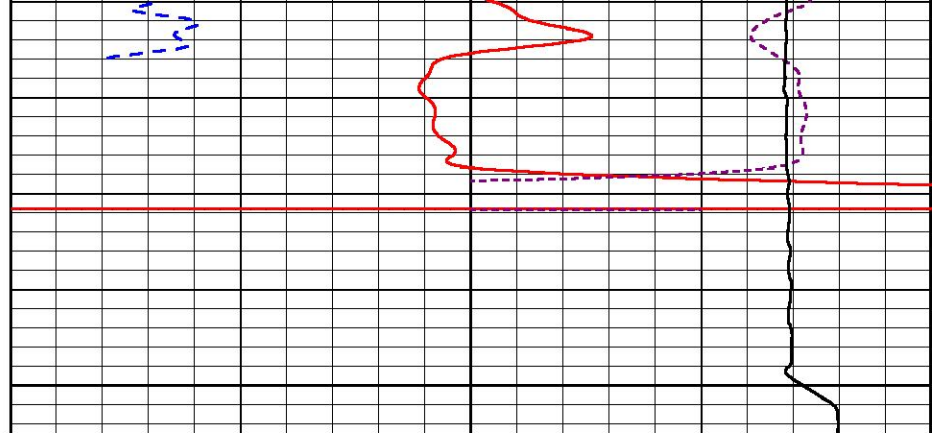
|   |                  |     |
|---|------------------|-----|
| 0 | GAMMA RAY (GAPI) | 150 |
| 6 | DCAL (in)        | 16  |

|       |                   |      |
|-------|-------------------|------|
| 30    | CNPOR (pu)        | -10  |
| 30    | DPOR (pu)         | -10  |
| 10000 | LINE TENSION (lb) | 0    |
| -0.25 | CORRECTION (g/cc) | 0.25 |





5000



|   |                  |     |
|---|------------------|-----|
| 0 | GAMMA RAY (GAPI) | 150 |
| 6 | DCAL (in)        | 16  |

|       |                   |      |
|-------|-------------------|------|
| 30    | CNPOR (pu)        | -10  |
| 30    | DPOR (pu)         | -10  |
| 10000 | LINE TENSION (lb) | 0    |
| -0.25 | CORRECTION (g/cc) | 0.25 |



Company Brito Oil Company, Inc.  
 Well Shelton Trust #1-33  
 Field Wildcat  
 County Cheyenne  
 State Kansas