



MIDWEST WIRELINE

# MICRORESISTIVITY LOG

Company Brito Oil Company, Inc.  
 Well Shelton Trust #1-33  
 Field Wildcat  
 County Cheyenne  
 State Kansas

Company Brito Oil Company, Inc.  
 Well Shelton Trust #1-33  
 Field Wildcat  
 County Cheyenne State Kansas

Location: API #: 15-023-21547-00-00  
 660' FNL & 2300' FWL  
 SEC 33 TWP 4S RGE 37W  
 Permanent Datum Ground Level Elevation 3393'  
 Log Measured From Kelly Bushing  
 Drilling Measured From Kelly Bushing  
 Other Services  
 CNL/CDL  
 DIL  
 Elevation  
 K.B. 3398'  
 D.F. N/A  
 G.L. 3393'

Date	4/12/2021
Run Number	One
Depth Driller	5000'
Depth Logger	5000'
Bottom Logged Interval	4999'
Top Log Interval	3800'
Casing Driller	8.625" @ 388'
Casing Logger	388'
Bit Size	7.875"
Type Fluid in Hole	Chemical
Salinity, ppm CL	1000
Density / Viscosity	9.1 64
pH / Fluid Loss	11.0 6.4
Source of Sample	FLOWLINE
Rm @ Meas. Temp	0.80 @ 60
Rmt @ Meas. Temp	0.60 @ 60
Rmc @ Meas. Temp	1.08 @ 60
Source of Rmf / Rmc	CHARTS
Rm @ BHT	0.38 @ 126
Operating Rig Time	4 Hours
Max Rec. Temp. F	126
Equipment Number	P-24
Location	HAYS
Recorded By	D. Schmidt
Witnessed By	Saman Sharifaie

<<< Fold Here >>>

All interpretations are opinions based on inferences from electrical or other measurements and Midwest Wireline LLC cannot and does not guarantee the accuracy or correctness of any interpretation, and Midwest Wireline LLC will not be liable or responsible for any loss, costs, damages, or expenses incurred or sustained by anyone resulting from any interpretation made by any of our officers, agents or employees.

### Comments

N/A DENOTES NOT AVAILABLE OR NON-APPLICABLE.

Bird City,  
 2 East to 31 Rd, 6 South to H Rd 1/2 East,  
 South into

Log Measured From: Kelly Bushing 5 Ft. Above Permanent Datum

THANK YOU FOR USING MIDWEST WIRELINE LLC  
 785-625-3858

Your Midwest Wireline Crew		This Log Record Was Witnessed By	
Engineer: D. Schmidt	Operator:	Primary Witness: Saman Sharifaie	Secondary Witness:
Operator:	Operator:	Secondary Witness:	Secondary Witness:
Operator:		Secondary Witness:	

Core	Offset (ft)	Depth	Description	Length (ft)	O.D. (in)	Weight (lb)
------	-------------	-------	-------------	-------------	-----------	-------------

Sensor	Offset (ft)	Schematic	Description	Length (ft)	O.D. (in)	Weight (lb)
GR	44.50		GR-M&W (233-M&W)	3.00	3.50	50.00
CNLSC	41.40		CNT-M&W (207-MW)	5.50	3.50	100.00
CNSSC	40.65					
LSD	32.35		CDL-M&W (817-947)	8.50	4.00	250.00
DCAL	32.33					
SSD	31.85					
MCAL	20.87		ML-PSI UDM ML (UDM-01) Stackable Microlog Tools	11.50	4.00	215.00
MI	20.87					
MN	20.87					
RLL3F	15.80					
RLL3	15.80					
CILD	8.00	DIL-PSI HIGH TEMP (952-828)	18.50	3.50	220.00	
CILM	4.70					
SP	0.20					

Dataset: brito\_shelton trust 1-33.db: field/well/stkml/pass3.1  
 Total length: 47.00 ft  
 Total weight: 835.00 lb  
 O.D.: 4.00 in

# Log Variables

DatabaseC:\ProgramData\Warrior\Data\brito\_shelton trust 1-33.db  
 Dataset field/well/stkml/pass3.1/\_vars\_

## Top - Bottom

A	BOREID in	BOTTEMP degF	CASEOD in	CASETHCK in	FLUIDDEN g/cc	M	MATRXDEN g/cc
1	7.875	126	5.5	0	1	2	2.71
NPORSEL	PERFS	SNDERR mmho/m	SNDERRM mmho/m	SPSHIFT mV	SRFTEMP degF	SZCOR	TDEPTH ft
Limestone	No	0	0	210	60	Off	5000

## Variable Description

A : Cement Factor (a)  
 BOREID : Borehole I.D.  
 BOTTEMP : Bottom Hole Temperature  
 CASEOD : Casing O.D.  
 CASETHCK : Casing Thickness  
 FLUIDDEN : Fluid Density  
 M : Cement Exp (m)  
 MATRXDEN : Matrix Density

NPORSEL : Neutron Porosity Curve Select  
 PERFS : Perforation Flag  
 SNDERR : Deep Sonde Error Correction  
 SNDERRM : Medium Sonde Error Correction  
 SPSHIFT : S.P. Baseline Offset  
 SRFTEMP : Surface Temperature  
 SZCOR : CN Size Cor. ?  
 TDEPTH : Total Depth

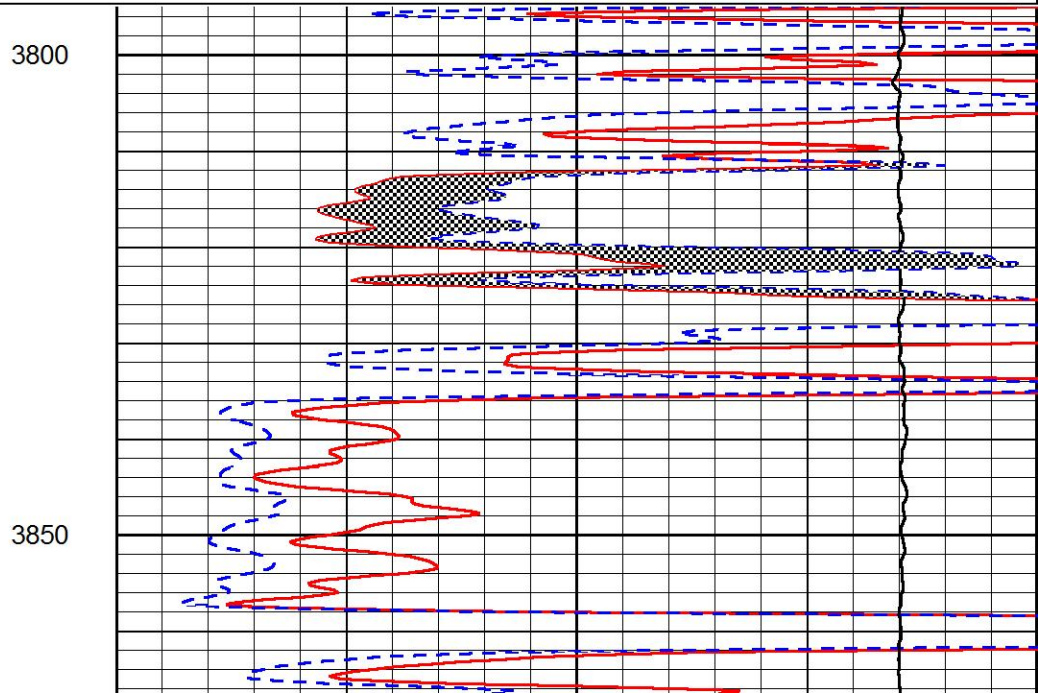
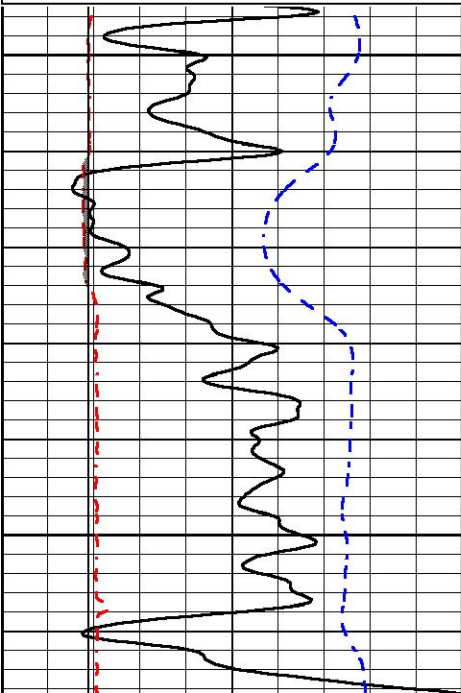


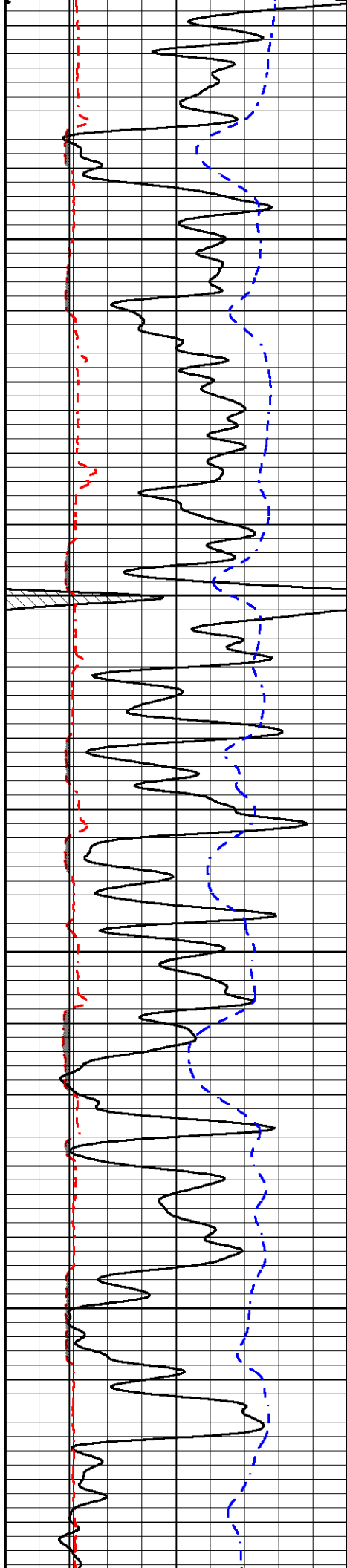
# MAIN PASS

Database File       brito\_shelton trust 1-33.db  
 Dataset Pathname   stkml/pass3.1  
 Presentation Format  \_micro  
 Dataset Creation   Mon Apr 12 23:50:40 2021  
 Charted by         Depth in Feet scaled 1:240

0	GAMMA RAY (GAPI)	150
6	MCAL (in)	16
6	Bit Size (in)	16
-200	sp (mV)	0

0	MICRO INVERSE 1 X 1 (Ohm-m)	40
0	MICRO NORMAL 2" (Ohm-m)	40
10000	Line Weight (lb)	0



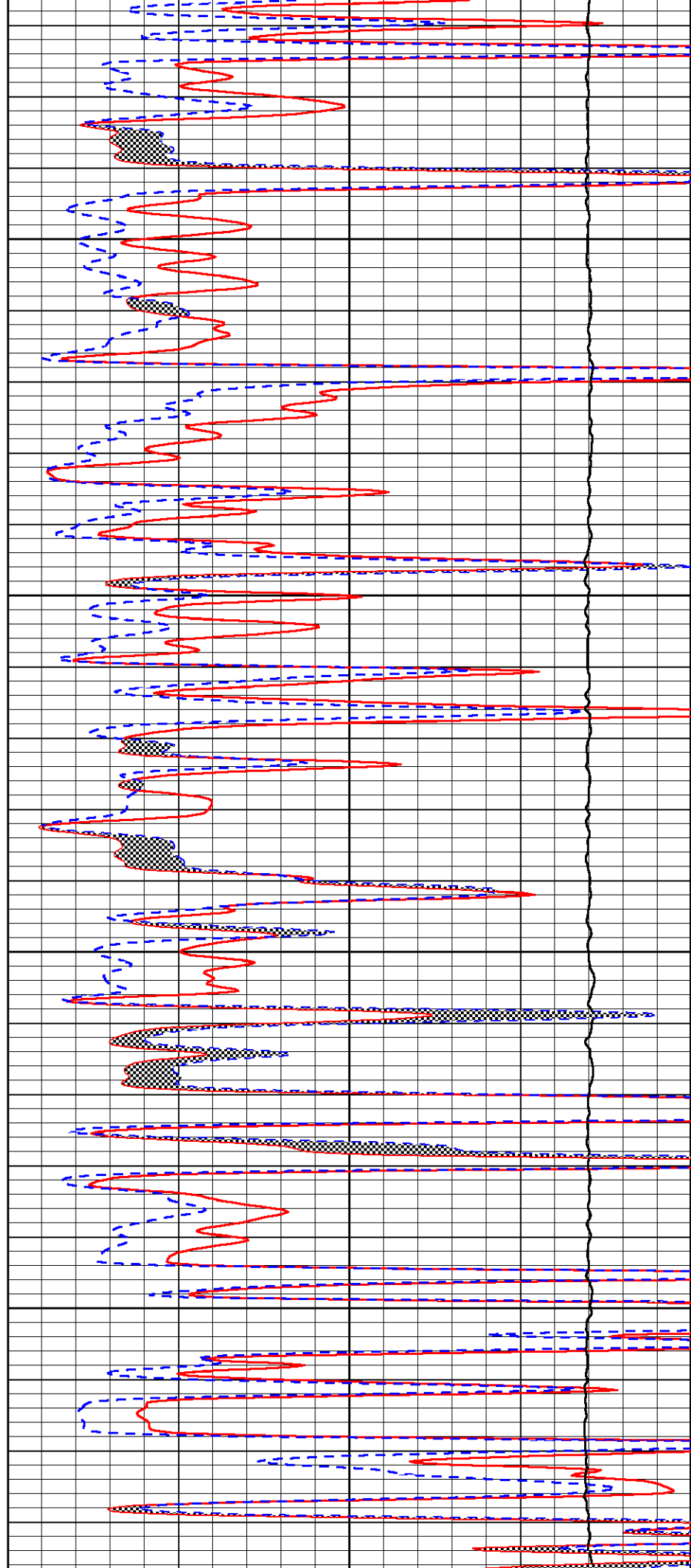


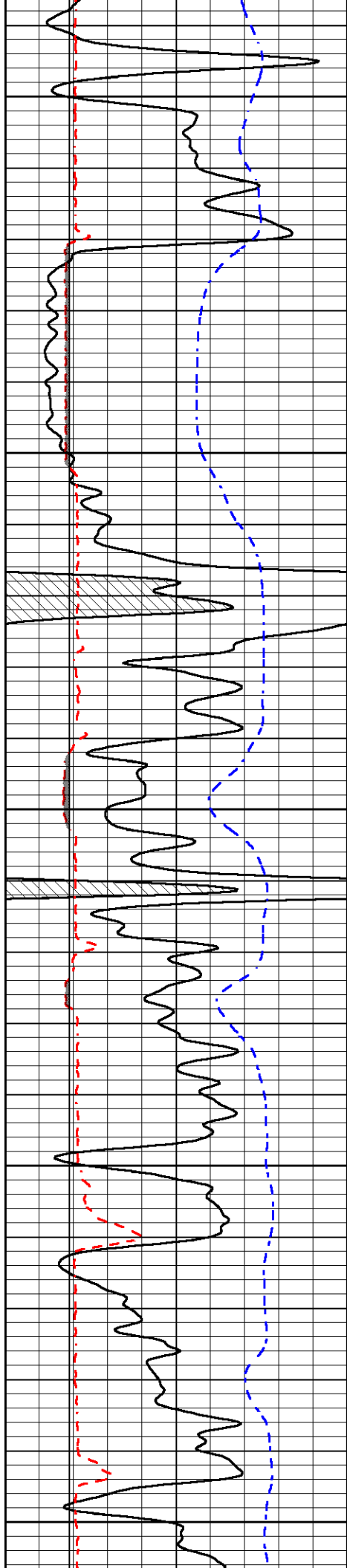
3900

3950

4000

4050





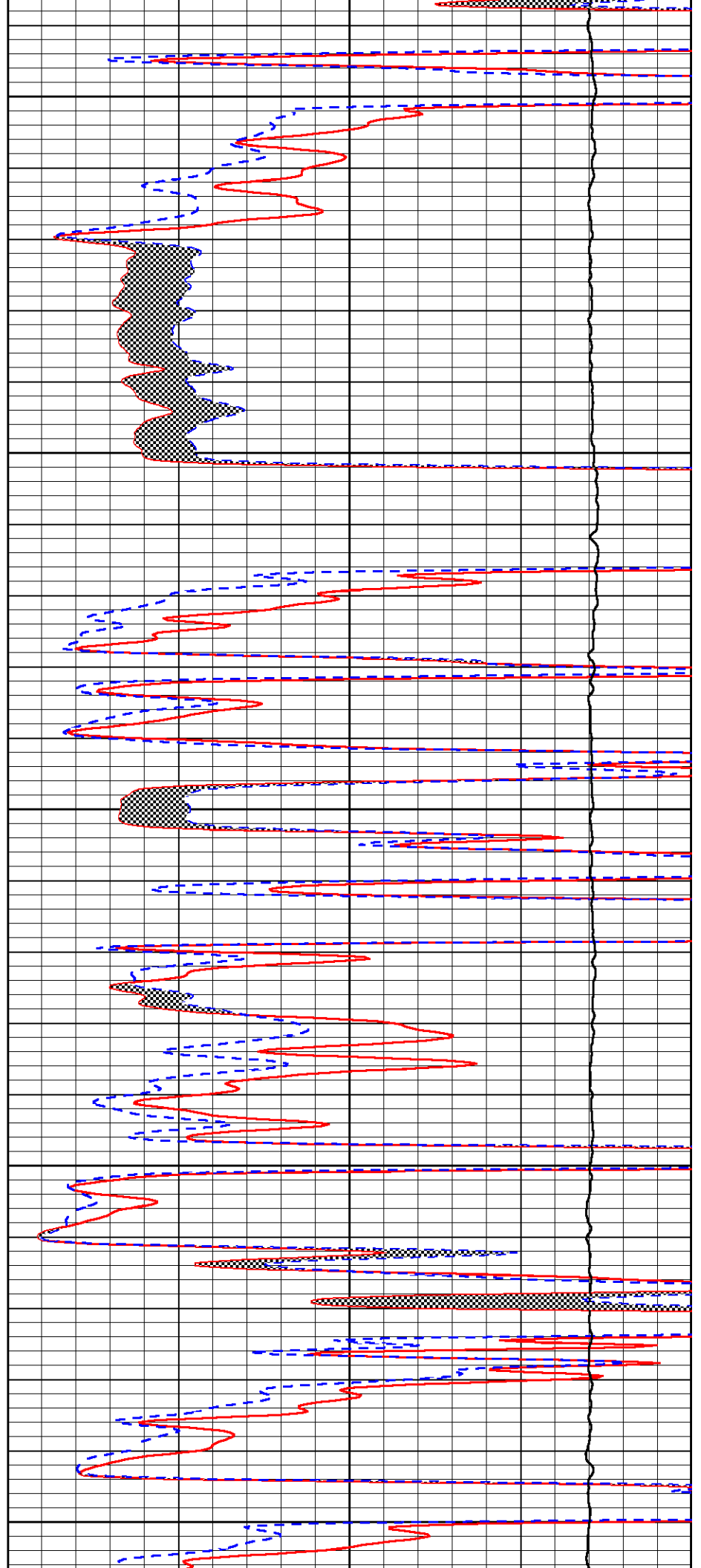
4100

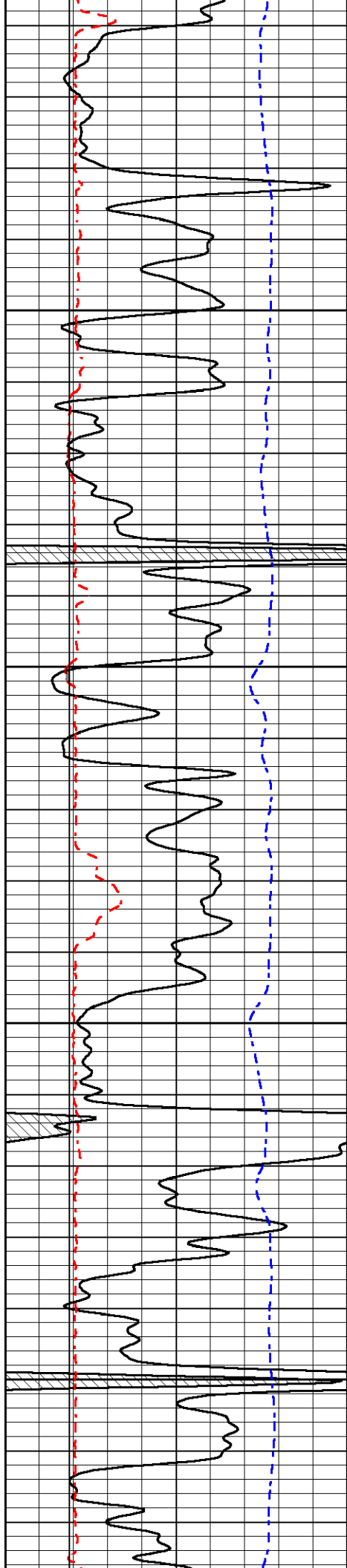
4150

4200

4250

4300



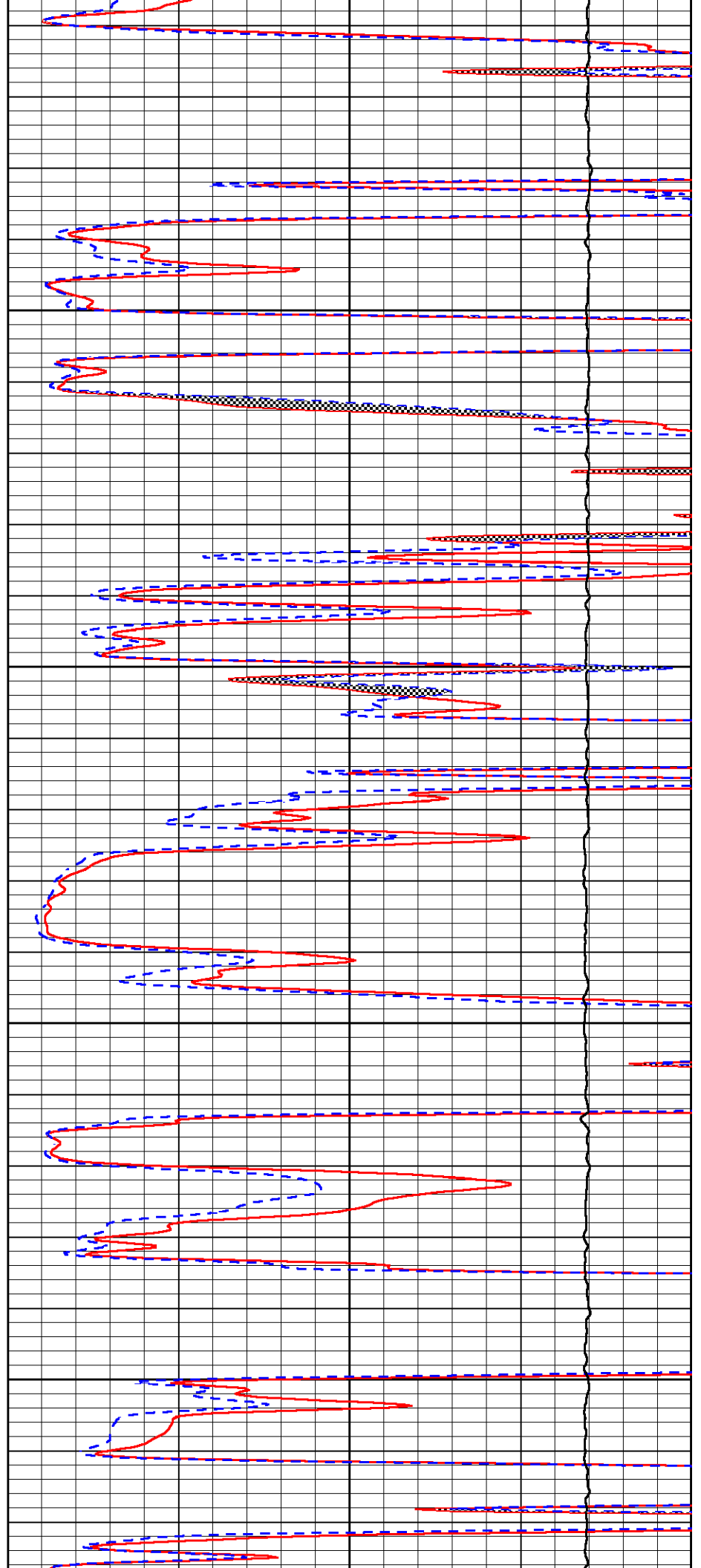


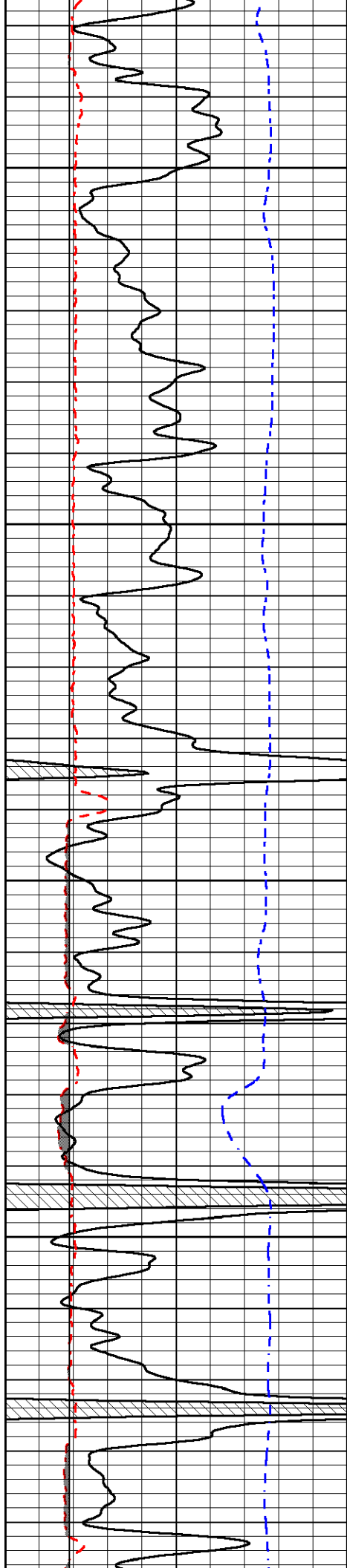
4350

4400

4450

4500



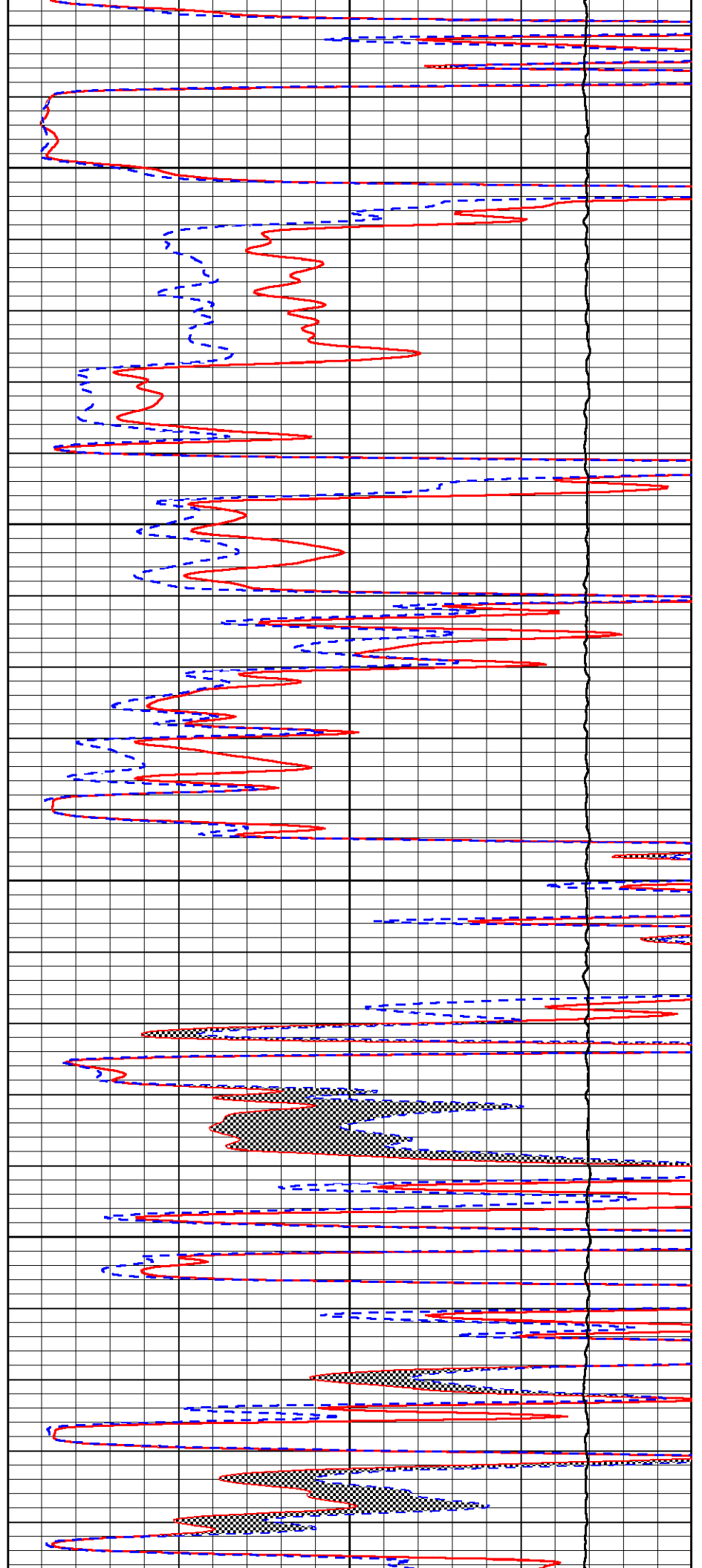


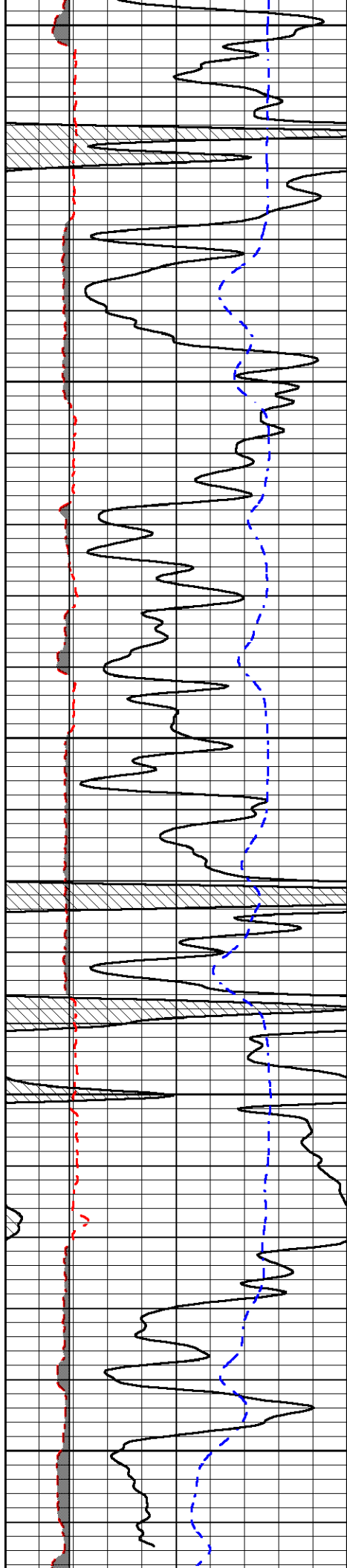
4550

4600

4650

4700





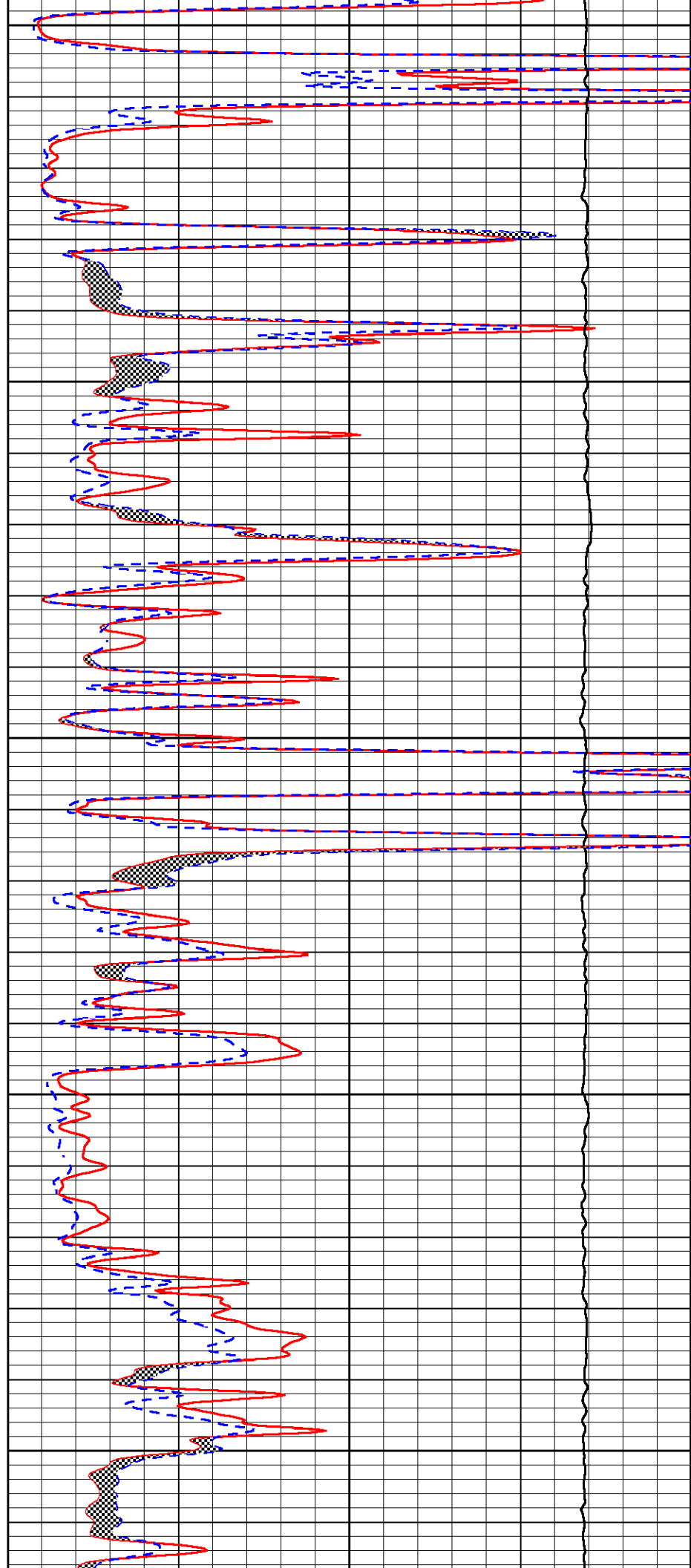
4750

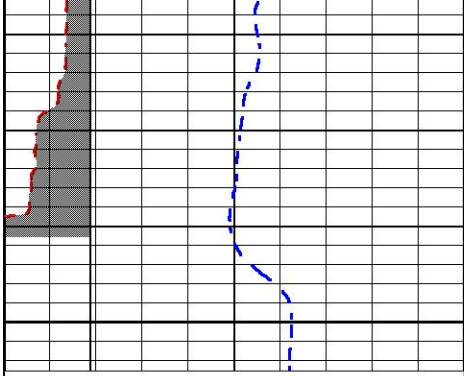
4800

4850

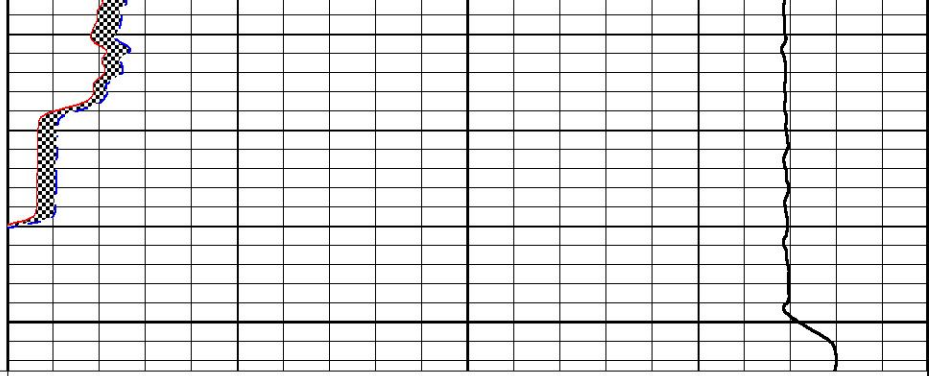
4900

4950





5000



0	GAMMA RAY (GAPI)	150
6	MCAL (in)	16
6	Bit Size (in)	16
-200	sp (mV)	0

0	MICRO INVERSE 1 X 1 (Ohm-m)	40
0	MICRO NORMAL 2" (Ohm-m)	40
10000	Line Weight (lb)	0



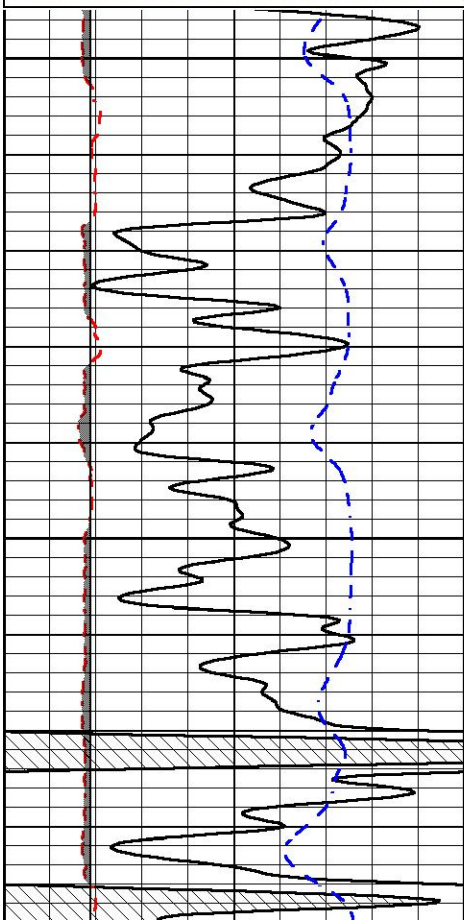
MIDWEST WIRELINE

# REPEAT SECTION

Database File      brito\_shelton trust 1-33.db  
 Dataset Pathname    stkml/pass2.1  
 Presentation Format    \_micro  
 Dataset Creation      Mon Apr 12 23:33:21 2021  
 Charted by            Depth in Feet scaled 1:240

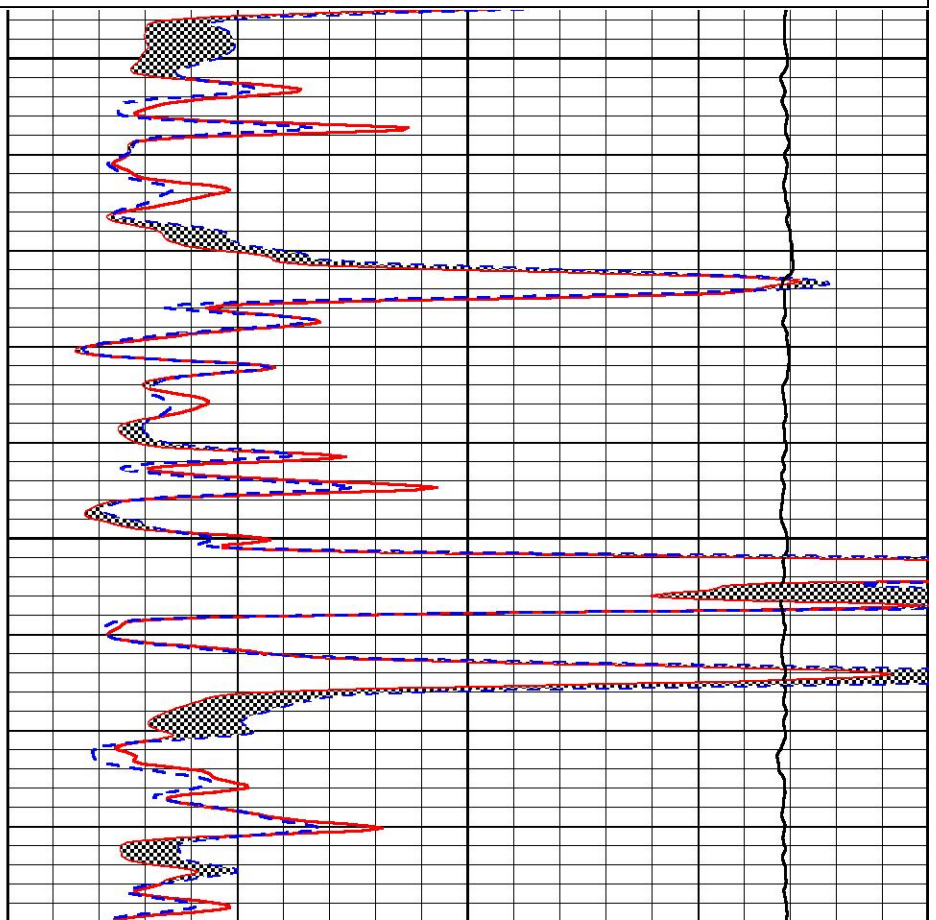
0	GAMMA RAY (GAPI)	150
6	MCAL (in)	16
6	Bit Size (in)	16
-200	sp (mV)	0

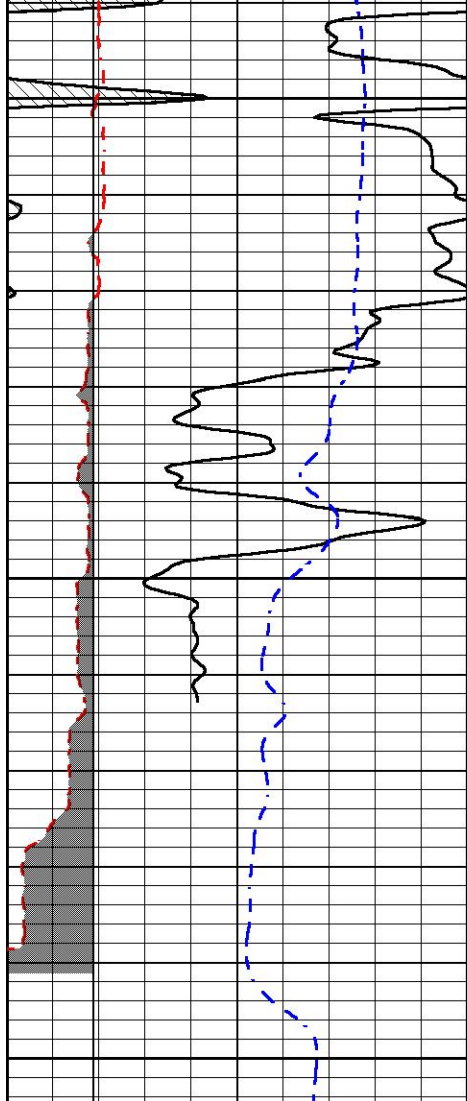
0	MICRO INVERSE 1 X 1 (Ohm-m)	40
0	MICRO NORMAL 2" (Ohm-m)	40
10000	Line Weight (lb)	0



4800

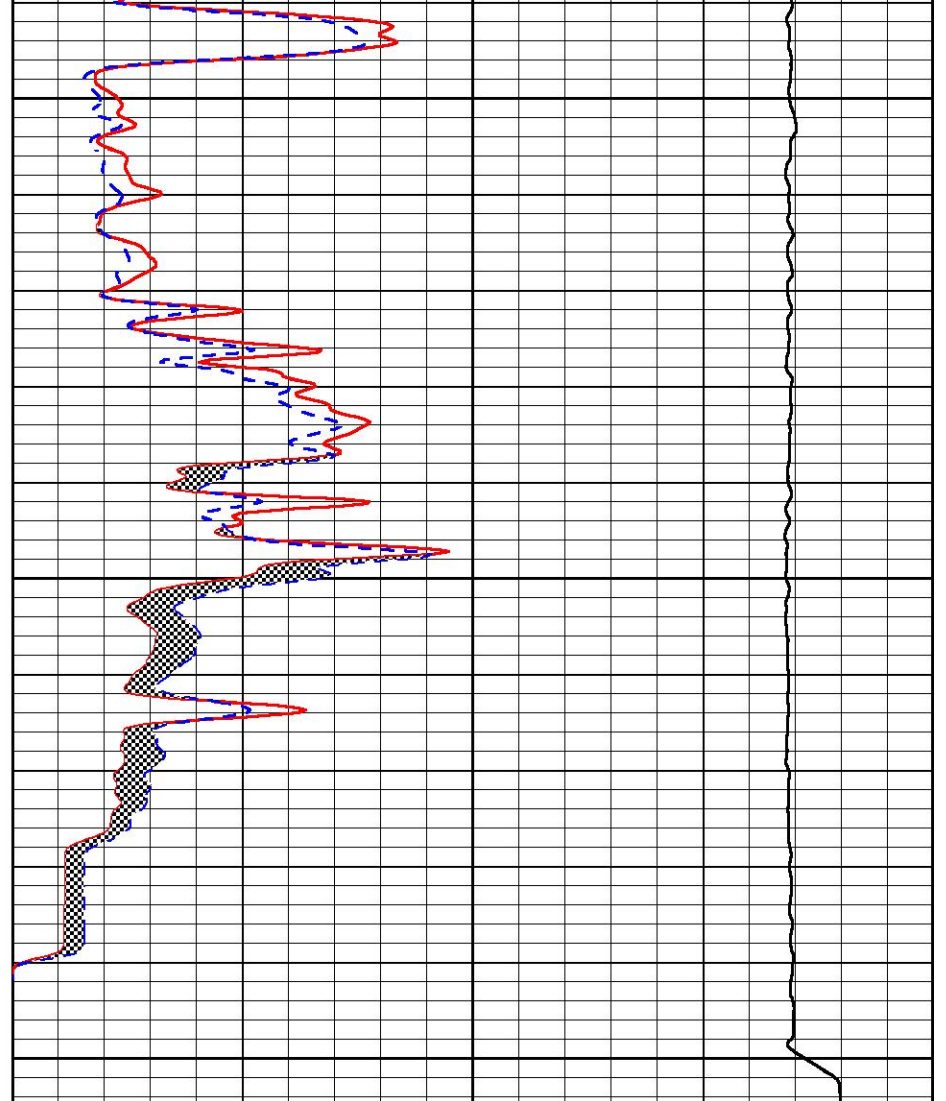
4850





0	GAMMA RAY (GAPI)	150
6	MCAL (in)	16
6	Bit Size (in)	16
-200	sp (mV)	0

4900  
4950  
5000



0	MICRO INVERSE 1 X 1 (Ohm-m)	40
0	MICRO NORMAL 2" (Ohm-m)	40
10000	Line Weight (lb)	0



MIDWEST WIRELINE

Company Brito Oil Company, Inc.  
Well Shelton Trust #1-33  
Field Wildcat  
County Cheyenne  
State Kansas