

Sector Bond / Gamma Ray
CCL Log

15-083-21984-00-00

API No.

Company American Warrior, Inc.

Well Hubin Unit #1-15

Field Lippoldt West

County Hodgeman

State Kansas

Location

245' FNL & 1891' FWL

Other Services
None

Sec: 15 Twp: 23S Rge: 23W

Elevation

Permanent Datum Ground Level Elevation 2318

Log Measured From Kelly Bushing 11 Ft. Above Perm. Datum

Drilling Measured From Kelly Bushing

K.B. 2329
D.F. 2318
G.L. 2318

Run Number One

Date Survey 4/26/2021

Date Cementing N/A

Type Cementing Operation Primary

Depth Driller 4878

Depth Logger 4831

Logged Interval 4829 to 3500

Casing Driller 5.5" @ TD

Float Collar -- D.V. Tool 1405

Squeeze Depth

Amount & Type Cement

Amount & Type Admix

Type Fluid In Hole Water

Fluid Level 400'

Salinity PPM CL

Weight lb/gal -- Vis. // // //

Approx. Logged Cement Top 3650

Calculated Cement Top 3650

Max. Hole Temperature 125

Tool No. R-1

Spacing Recorded 3-5'

Equipment -- Location 902 Hays

Recorded By J. Schmeidler

Witnessed By Octavio Morales

<<< Fold Here >>>

All interpretations are opinions based on inferences from electrical or other measurements and we cannot and do not guarantee the accuracy or correctness of any interpretation, and we shall not, except in the case of gross or willful negligence on our part, be liable or responsible for any loss, costs, damages, or expenses incurred or sustained by anyone resulting from any interpretation made by any of our officers, agents or employees. These interpretations are also subject to our general terms and conditions set out in our current Price Schedule.

Comments

Thank you for using Log-Tech

Jetmore, Kansas

1 East to 219, 2 South to rd K, 2.5 East , South into



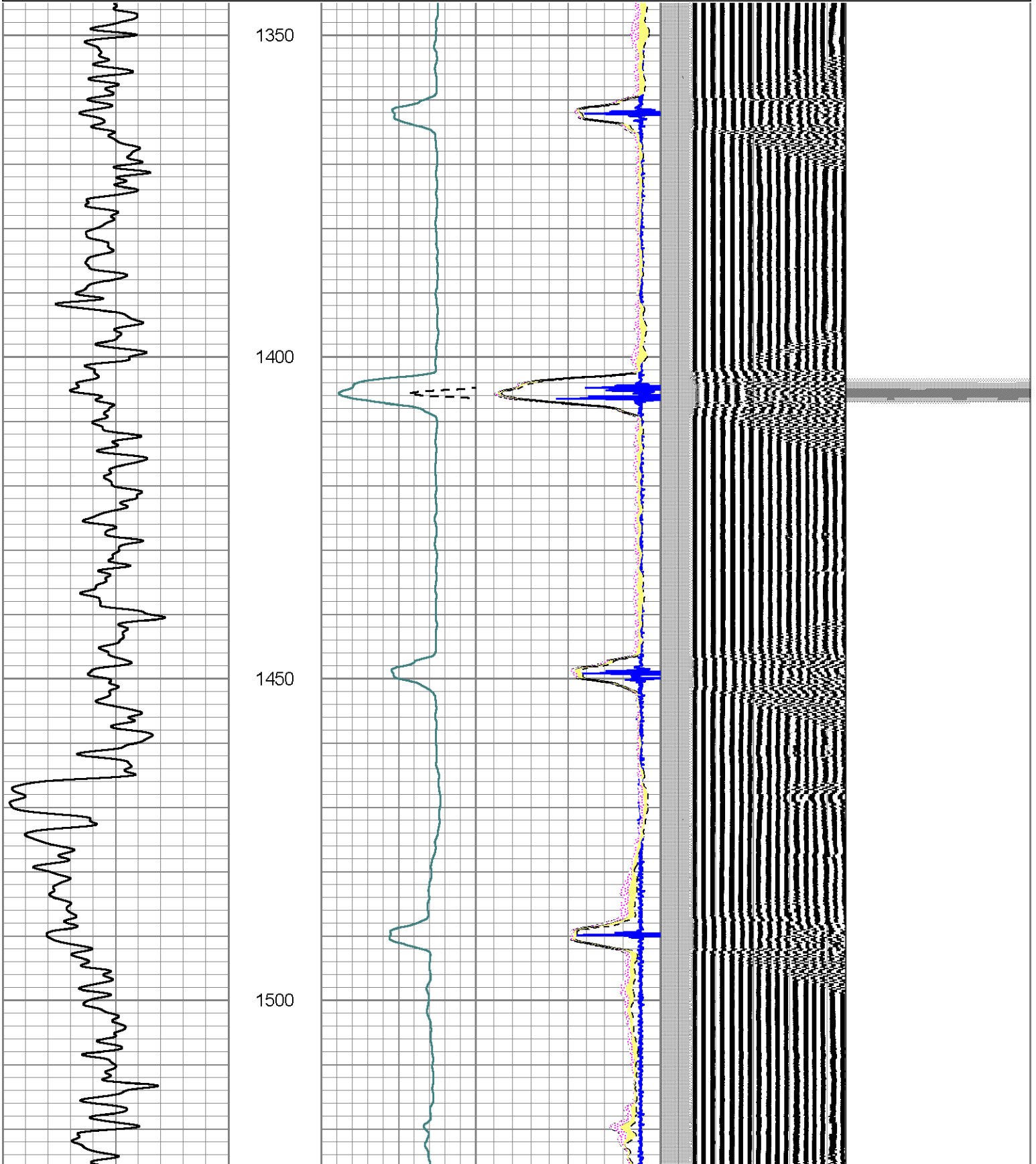
Port Collar @ 1405'

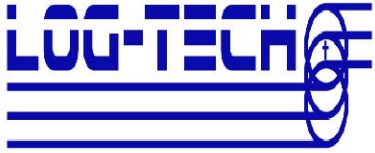
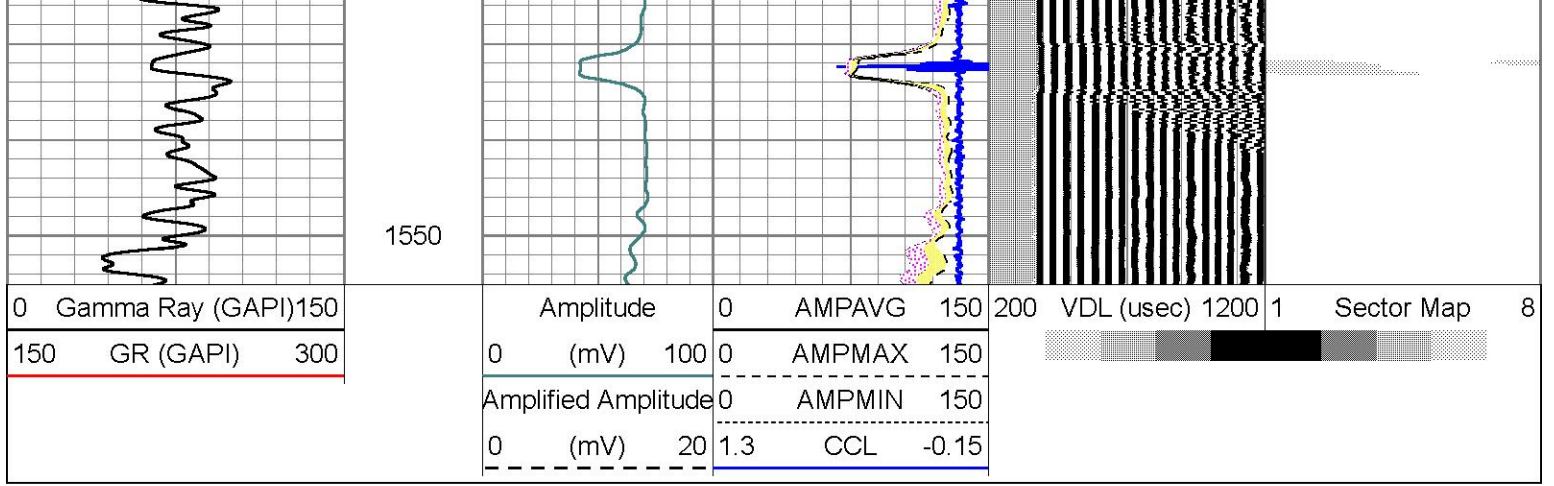
Database File amwarr11.db
 Dataset Pathname sector/pass5
 Presentation Format scbl18
 Dataset Creation Mon Apr 26 08:31:15 2021
 Charted by Depth in Feet scaled 1:240

0 Gamma Ray (GAPI) 150
 150 GR (GAPI) 300

Amplitude
 0 (mV) 100
 Amplified Amplitude
 0 (mV) 20
 AMPAVG 150
 AMPMAX 150
 AMPMIN 150
 CCL -0.15

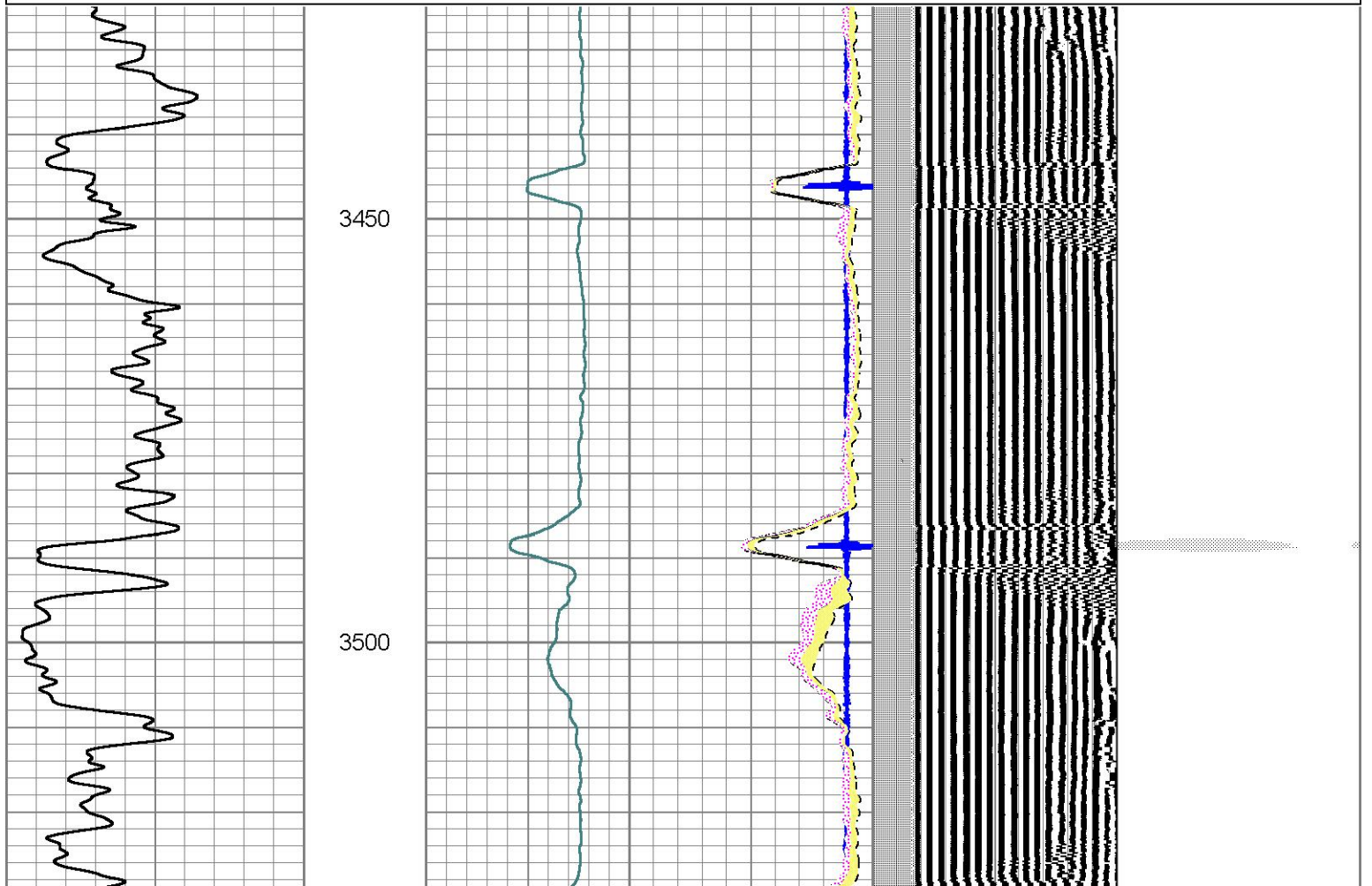
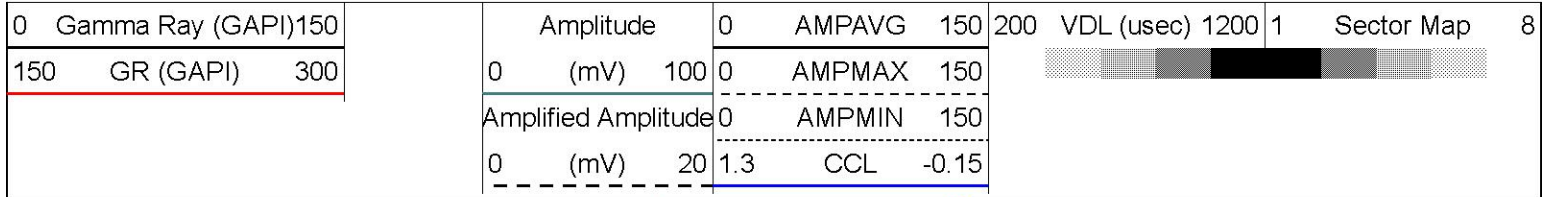
200 VDL (usec) 1200 1 Sector Map 8

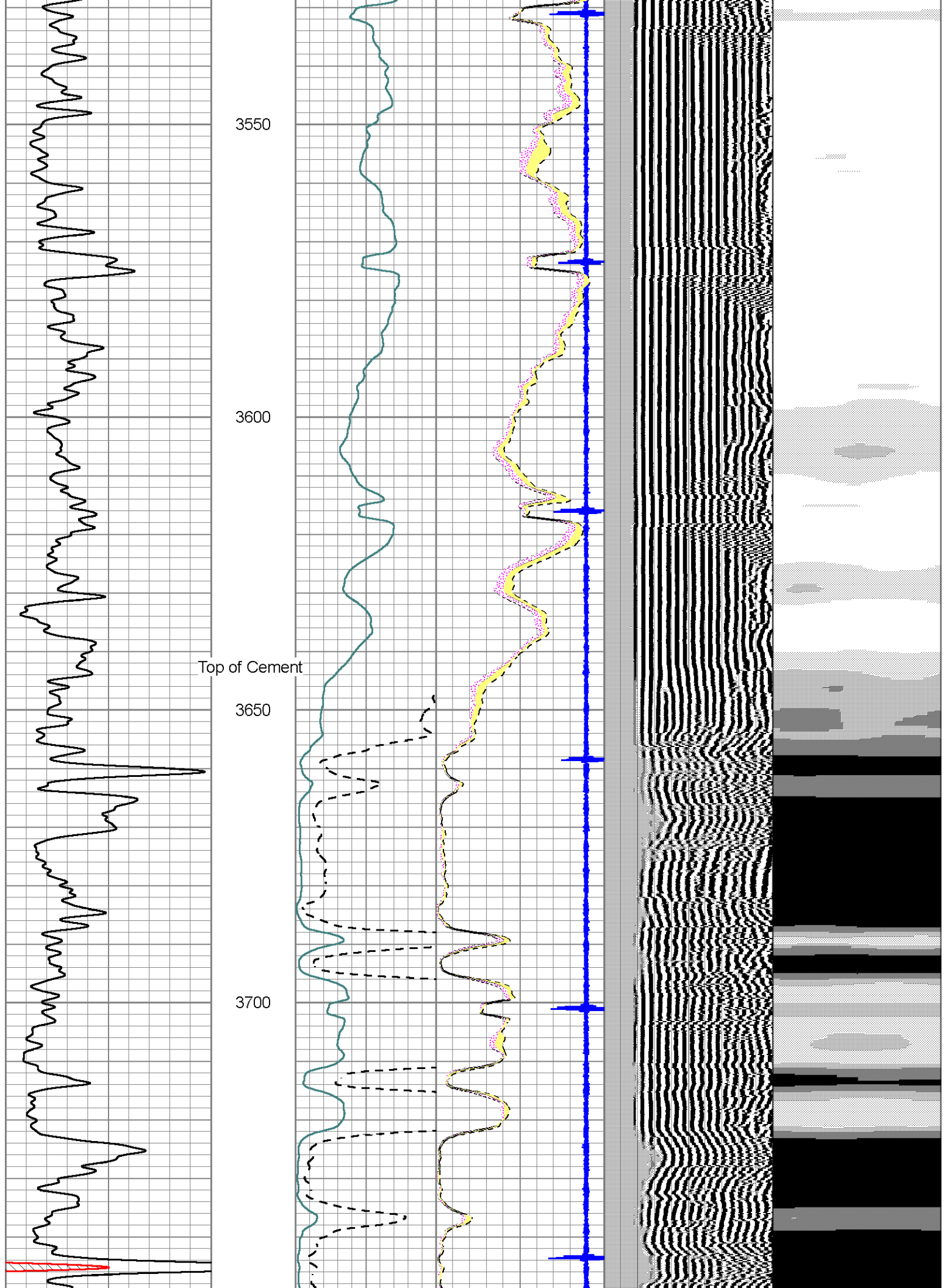


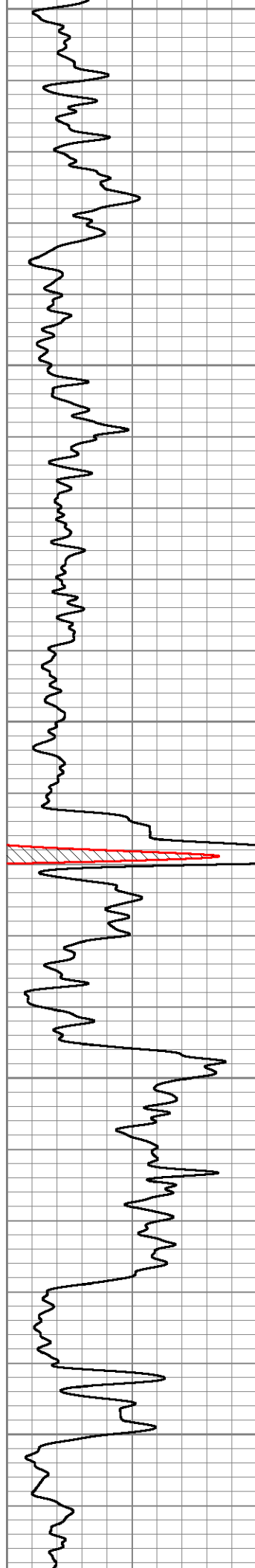


Main Pass

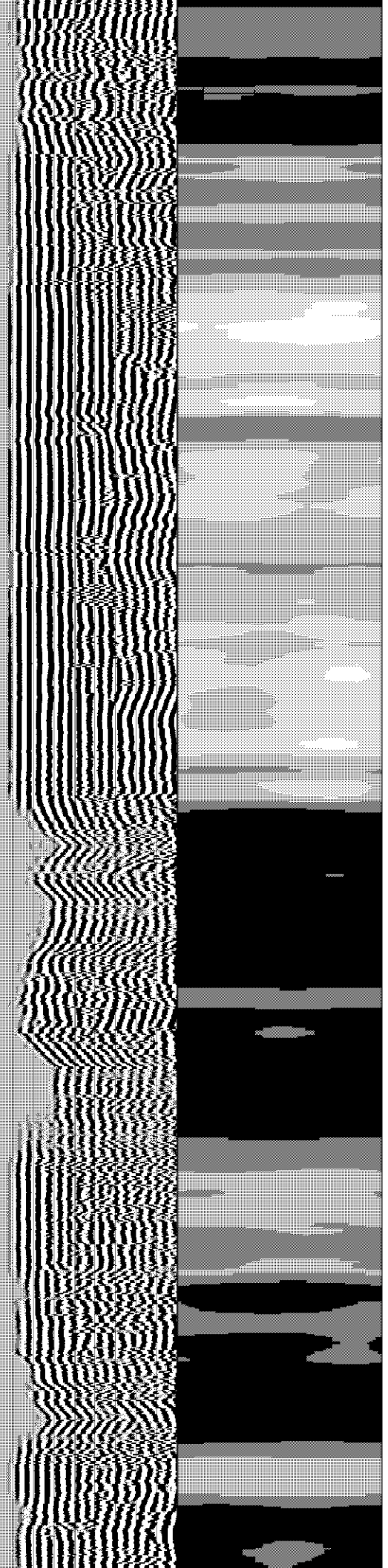
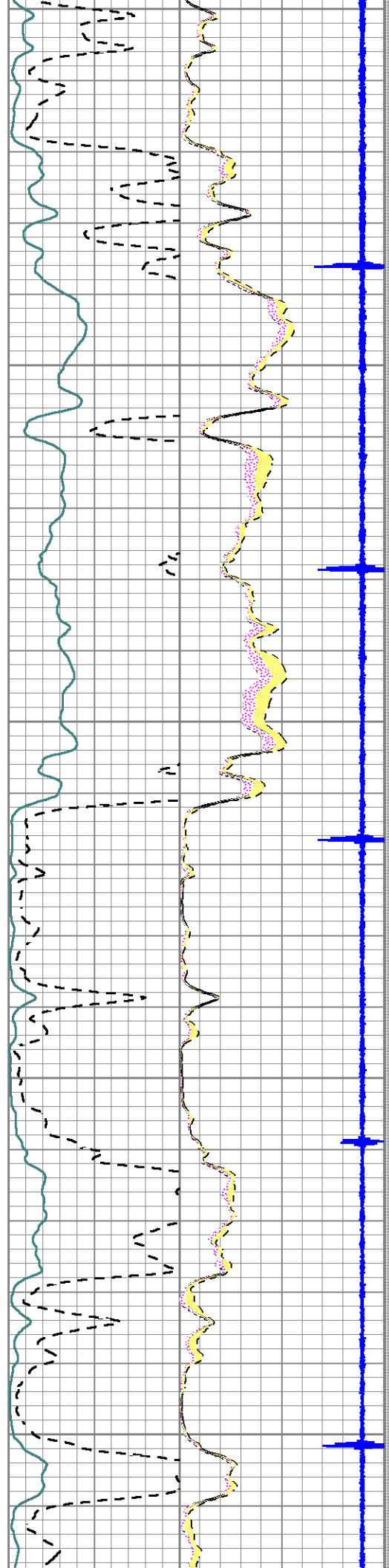
Database File amwarr11.db
 Dataset Pathname sector/pass4
 Presentation Format scbl18
 Dataset Creation Mon Apr 26 07:44:30 2021
 Charted by Depth in Feet scaled 1:240

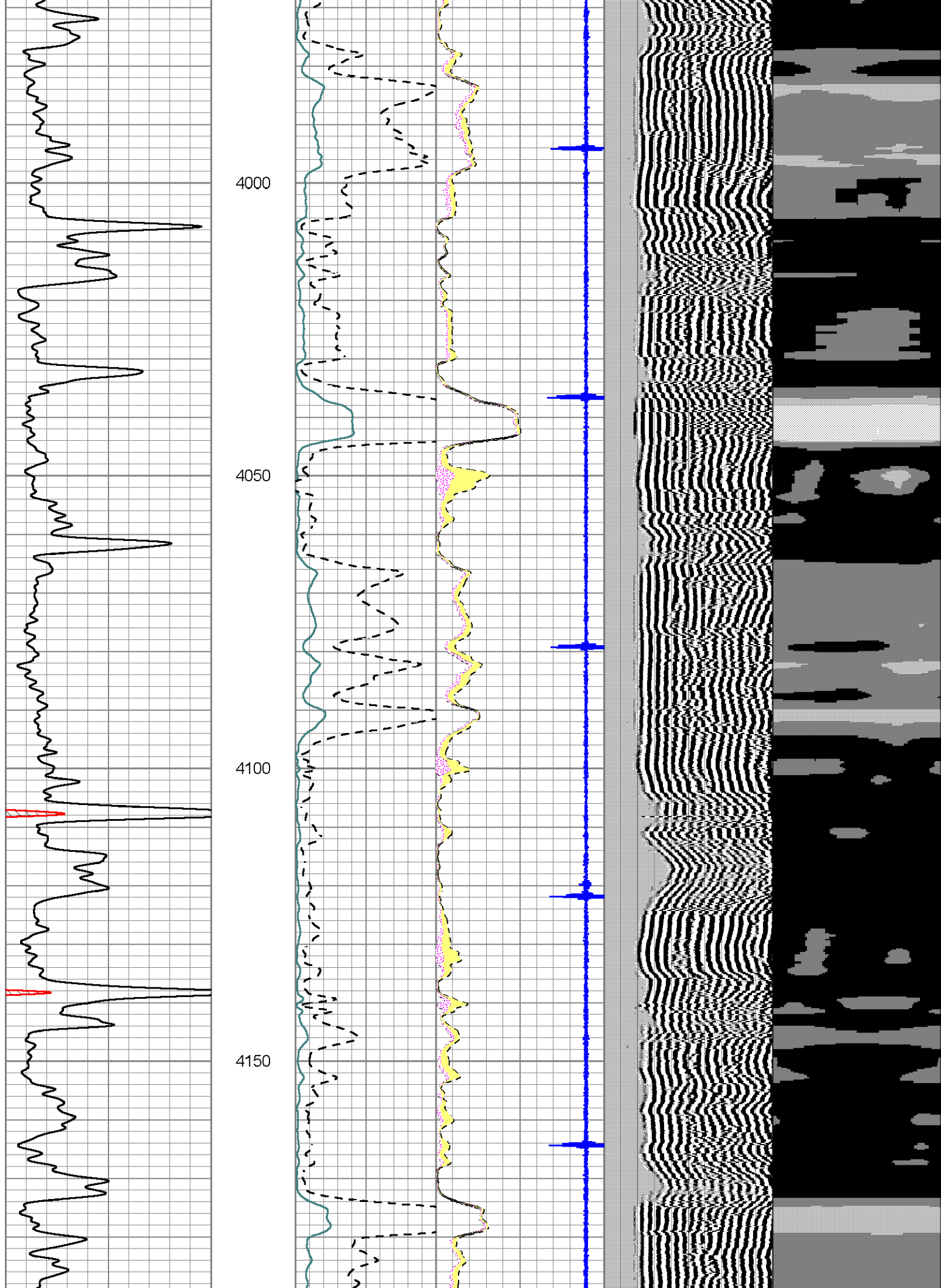


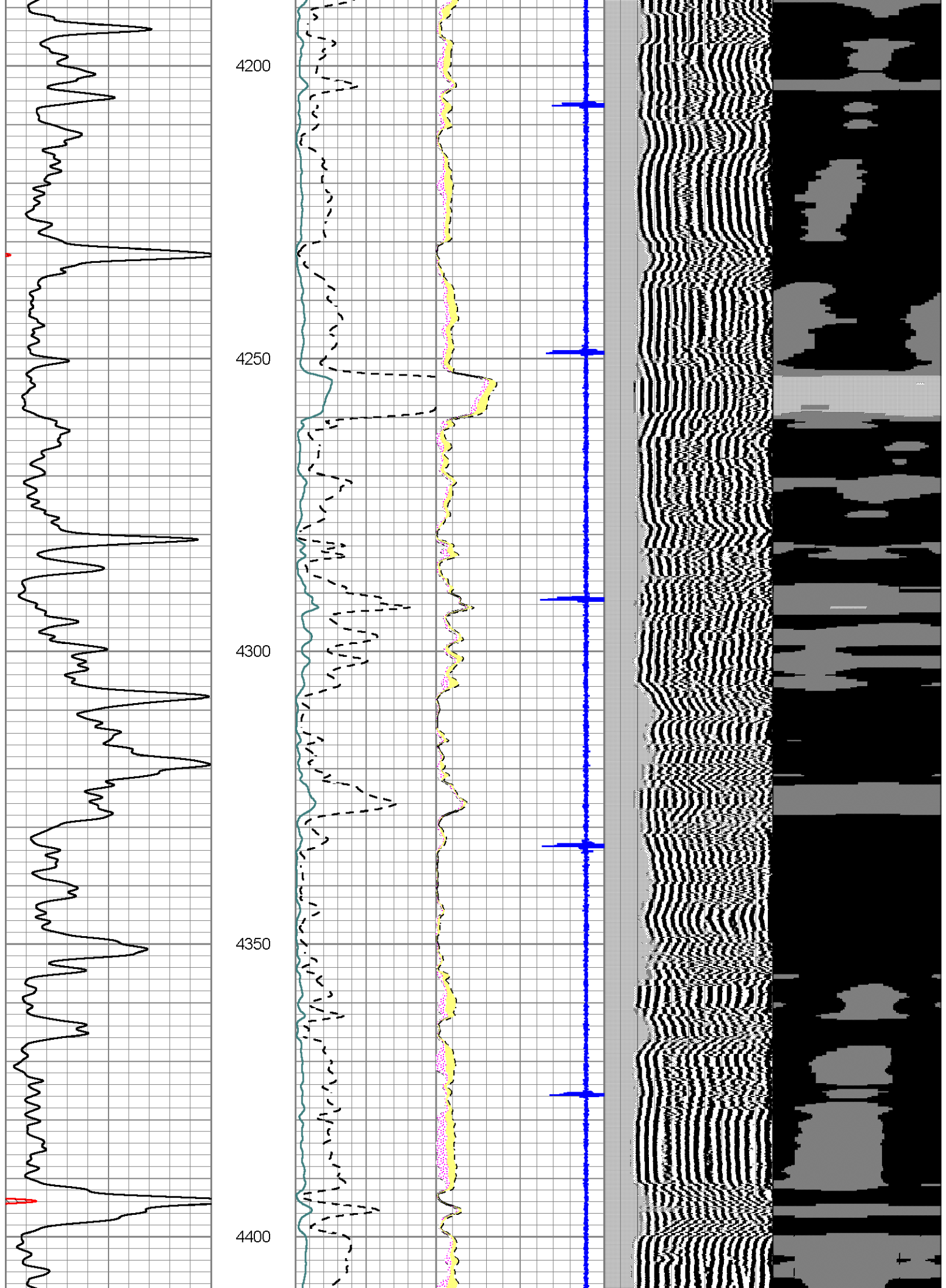


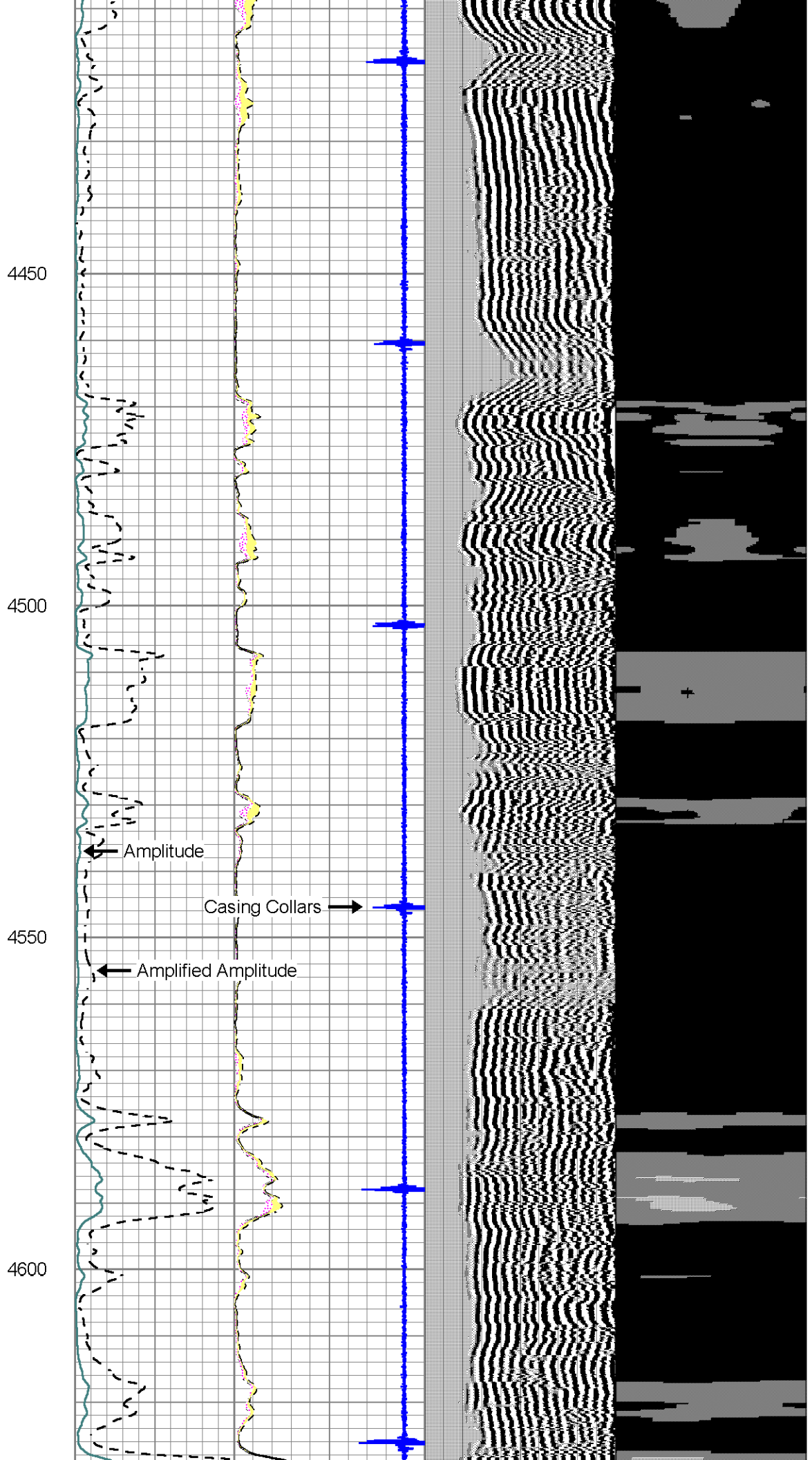
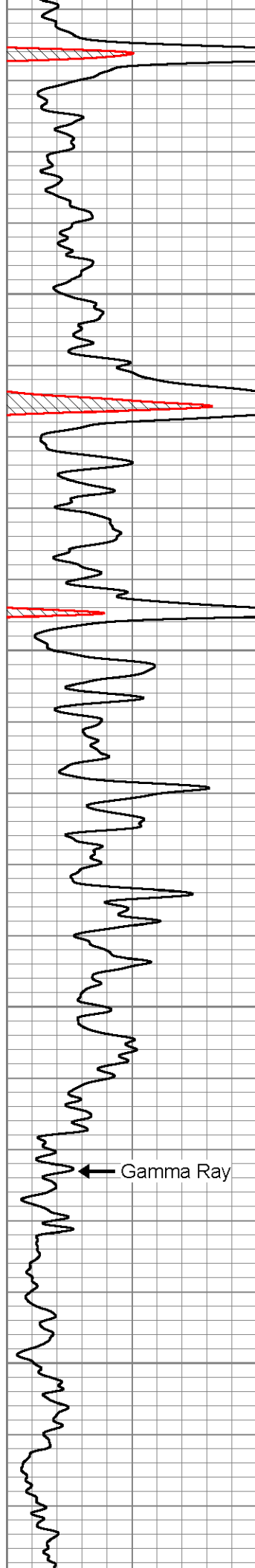


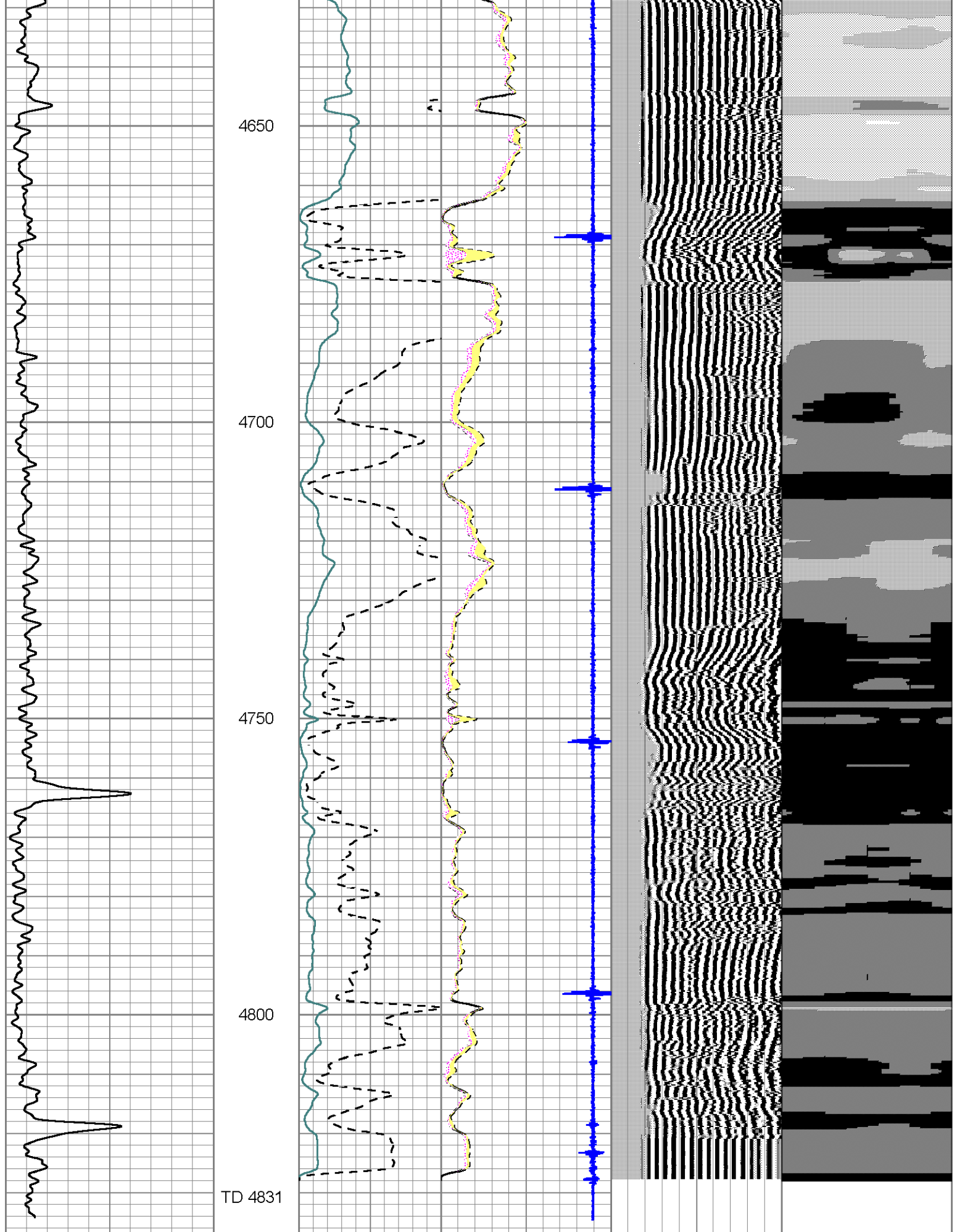
3750
3800
3850
3900
3950











0 Gamma Ray (GAPI) 150
 150 GR (GAPI) 300

Amplitude
 (mV) 0 100

0 AMPAVG 150
 0 AMPMAX 150

200 VDL (usec) 1200 1 Sector Map 8

TD 4831

4650

4700

4750

4800

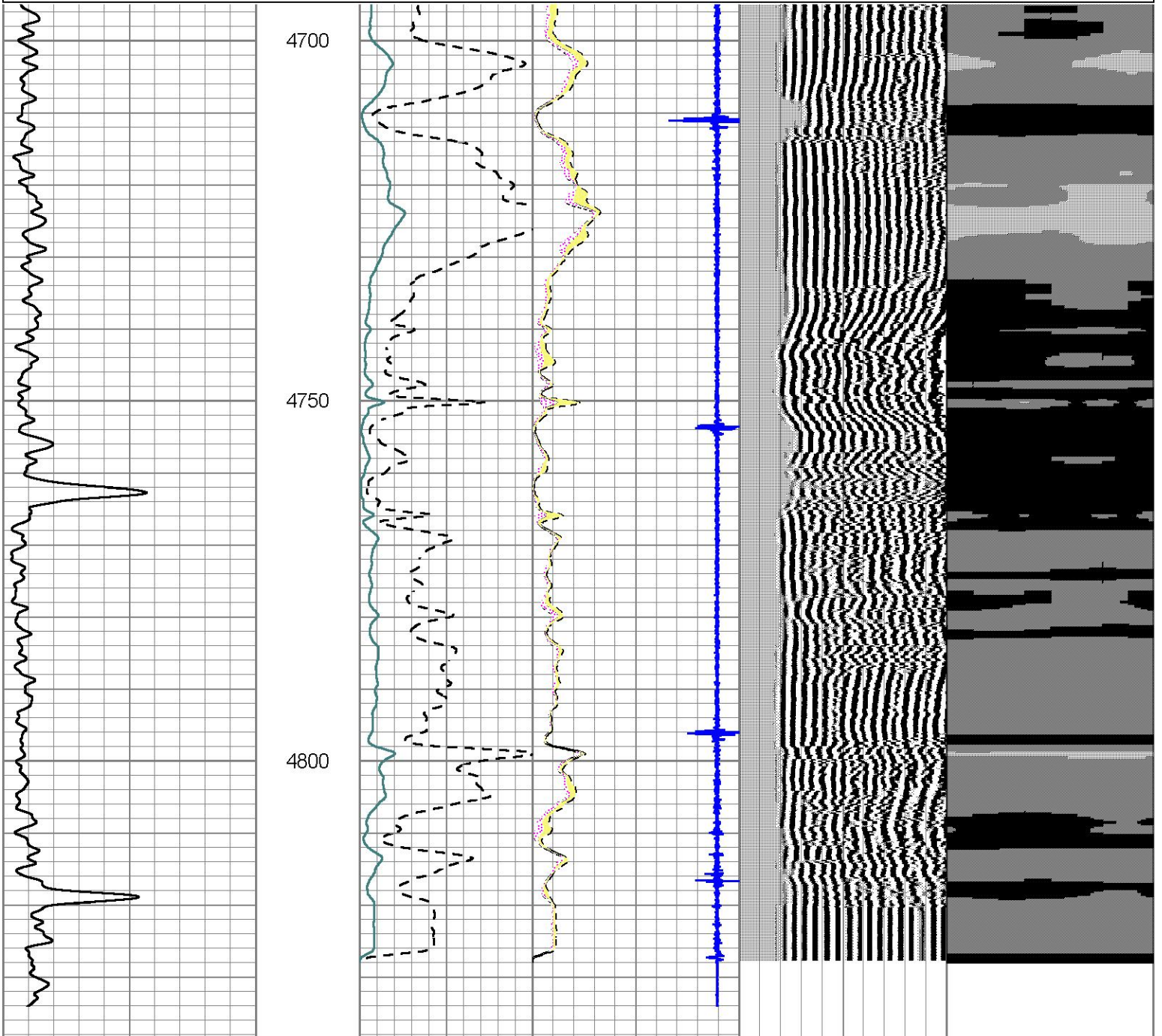
Amplified Amplitude	0	AMPMIN	150
0 (mV) 20	1.3	CCL	-0.15



Repeat Section

Database File amwarr11.db
 Dataset Pathname sector/pass3
 Presentation Format scbl18
 Dataset Creation Mon Apr 26 07:39:09 2021
 Charted by Depth in Feet scaled 1:240

0	Gamma Ray (GAPI)	150	Amplitude	0	AMPAVG	150	200	VDL (usec)	1200	1	Sector Map	8
150	GR (GAPI)	300	0 (mV) 100	0	AMPMAX	150						
			Amplified Amplitude	0	AMPMIN	150						
			0 (mV) 20	1.3	CCL	-0.15						



0	Gamma Ray (GAPI)	150
150	GR (GAPI)	300

Amplitude	0	100
(mV)		
Amplified Amplitude	0	20
(mV)		

AMPAVG	150
AMPMIN	150
CCL	-0.15

VDL (usec)	1200	1	Sector Map	8
------------	------	---	------------	---

