



MIDWEST WIRELINE

MICRORESISTIVITY LOG

Company: ARP Operating, LLC
 Well: Dechant #1
 Field: Wildcat
 County: Ness
 State: Kansas

Company: ARP Operating, LLC
 Well: Dechant #1
 Field: Wildcat
 County: Ness
 State: Kansas

Location: 1800' FNL & 1220' FWL
 SEC 1 TWP 20S RGE 22W
 API #: 15-135-26095-00-00
 Permanent Datum: Ground Level Elevation 2245'
 Log Measured From: Kelly Bushing
 Drilling Measured From: Kelly Bushing
 Other Services: CNL/CDL DIL
 Elevation: 2250'
 K.B.: N/A
 D.F.: N/A
 G.L.: 2245'

Date	2/3/2021
Run Number	One
Depth Driller	4425'
Depth Logger	4423'
Bottom Logged Interval	4422'
Top Log Interval	3700'
Casing Driller	8.625" @ 335'
Casing Logger	338'
Bit Size	7.875"
Type Fluid in Hole	Chemical
Salinity, ppm CL	6000
Density / Viscosity	9.3 51
pH / Fluid Loss	10.5 8.0
Source of Sample	FLOWLINE
Rm @ Meas. Temp	.55 @ 65
Rmt @ Meas. Temp	.41 @ 65
Rmc @ Meas. Temp	.74 @ 65
Source of Rmf / Rmc	CHARTS
Rm @ BHT	.30 @ 120
Operating Rig Time	2 Hours
Max Rec. Temp. F	120 Deg/F
Equipment Number	P-24
Location	HAYS
Recorded By	J. Henrickson
Witnessed By	Sean Deenihan

<<< Fold Here >>>

All interpretations are opinions based on inferences from electrical or other measurements and Midwest Wireline LLC cannot and does not guarantee the accuracy or correctness of any interpretation, and Midwest Wireline LLC will not be liable or responsible for any loss, costs, damages, or expenses incurred or sustained by anyone resulting from any interpretation made by any of our officers, agents or employees.

Comments

N/A DENOTES NOT AVAILABLE OR NON-APPLICABLE.

Bazine Kansas
 South to 60 Rd, 1 West, South Into

Log Measured From: Kelly Bushing 5 Ft. Above Permanent Datum

THANK YOU FOR USING MIDWEST WIRELINE LLC
 785-625-3858

Your Midwest Wireline Crew

Engineer: J. Henrickson
 Operator:
 Operator:
 Operator:

This Log Record Was Witnessed By

Primary Witness: Sean Deenihan
 Secondary Witness:
 Secondary Witness:
 Secondary Witness:

Log Variables

DatabaseC:\ProgramData\Warrior\Data\arp_dechant_1.db
Dataset field/well/stackml/pass3.1/_vars_

Top - Bottom

A	BOREID in	BOTTEMP degF	CASEOD in	CASETHCK in	FLUIDDEN g/cc	M	MATRXDEN g/cc
1	7.875	120	5.5	0	1	2	2.71
NPORSEL	PERFS	SNDERR mmho/m	SNDERRM mmho/m	SPSHIFT mV	SRFTEMP degF	SZCOR	TDEPTH ft
Limestone	0	0	0	360	55	Off	4423

Variable Description

A : Cement Factor (a)
BOREID : Borehole I.D.
BOTTEMP : Bottom Hole Temperature
CASEOD : Casing O.D.
CASETHCK : Casing Thickness
FLUIDDEN : Fluid Density
M : Cement Exp (m)
MATRXDEN : Matrix Density

NPORSEL : Neutron Porosity Curve Select
PERFS : Perforation Flag
SNDERR : Deep Sonde Error Correction
SNDERRM : Medium Sonde Error Correction
SPSHIFT : S.P. Baseline Offset
SRFTEMP : Surface Temperature
SZCOR : CN Size Cor. ?
TDEPTH : Total Depth

Sensor	Offset (ft)	Schematic	Description	Length (ft)	O.D. (in)	Weight (lb)
GR	40.58		GR-M&W (233-M&W)	3.00	3.50	50.00
CNLSC	37.48		CNT-M&W (207-MW)	5.50	3.50	100.00
CNSSC	36.73					
LSD	28.43		CDL-M&W (817-947)	8.50	4.00	250.00
DCAL	28.42					
SSD	27.93					
ML-PSIML (PSI-01)			ML-PSIML (PSI-01) GO Micro log tools converted to Simplec electronics	7.58	4.00	65.00
MCAL	19.83					
MI	19.83					
MN	19.83					
RLL3F	15.80					
RLL3	15.80					

CILD 8.00

CILM 4.70

SP 0.20

DIL-PSI HIGH TEMP (952-828)

18.50

3.50

220.00

Dataset: arp_dechant_1.db: field/well/stackml/pass3.1
 Total length: 43.08 ft
 Total weight: 685.00 lb
 O.D.: 4.00 in

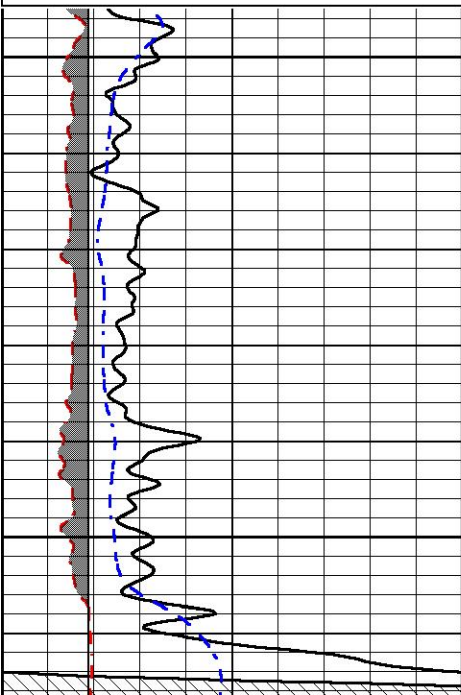


Main Pass

Database File arp_dechant_1.db
 Dataset Pathname stackml/pass3.1
 Presentation Format _micro
 Dataset Creation Wed Feb 03 23:21:57 2021
 Charted by Depth in Feet scaled 1:240

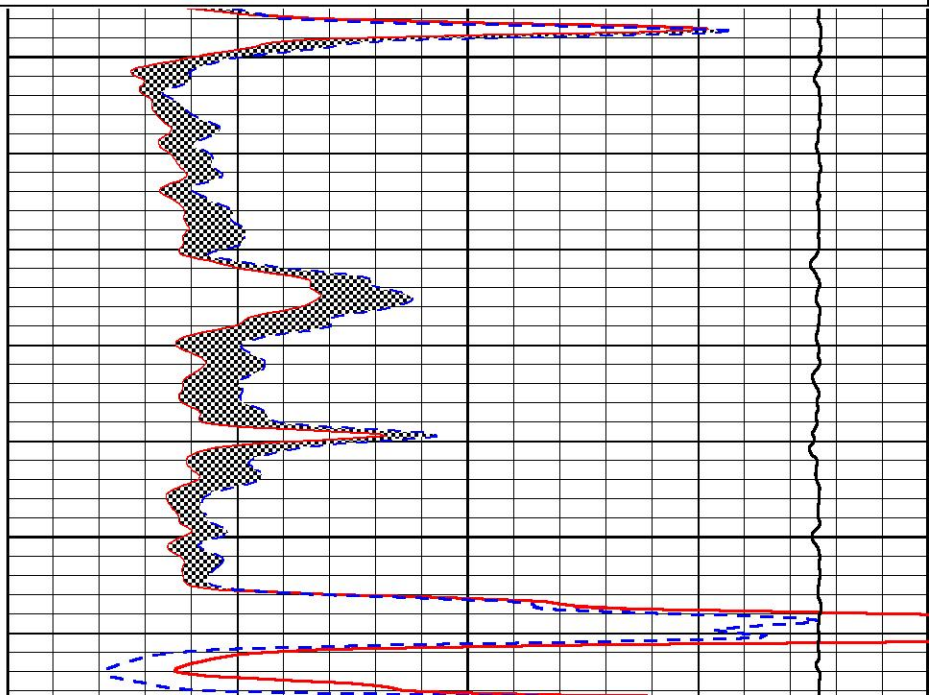
0	GAMMA RAY (GAPI)	150
6	MCAL (in)	16
6	Bit Size (in)	16
-200	sp (mV)	0

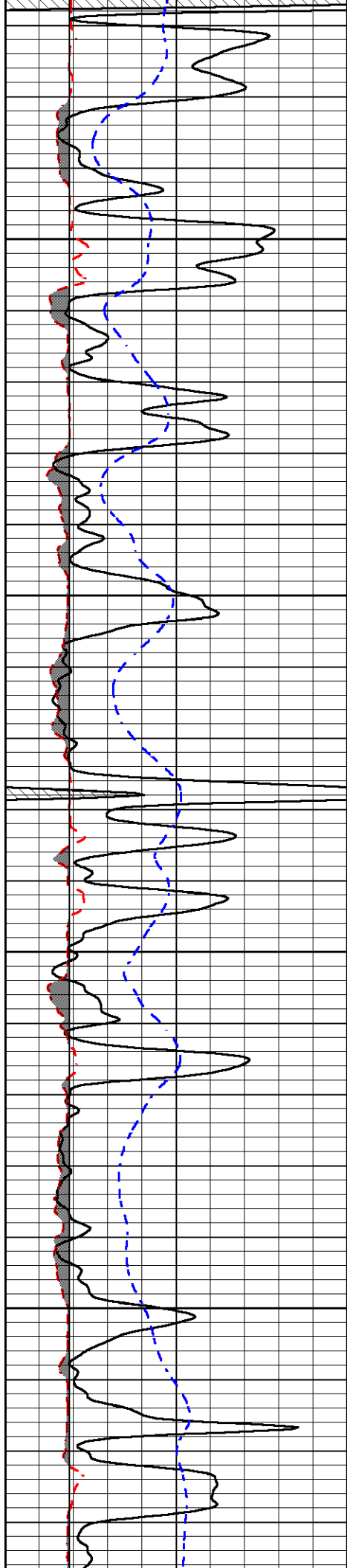
0	MICRO INVERSE 1 X 1 (Ohm-m)	40
0	MICRO NORMAL 2" (Ohm-m)	40
10000	Line Weight (lb)	0



3700

3750



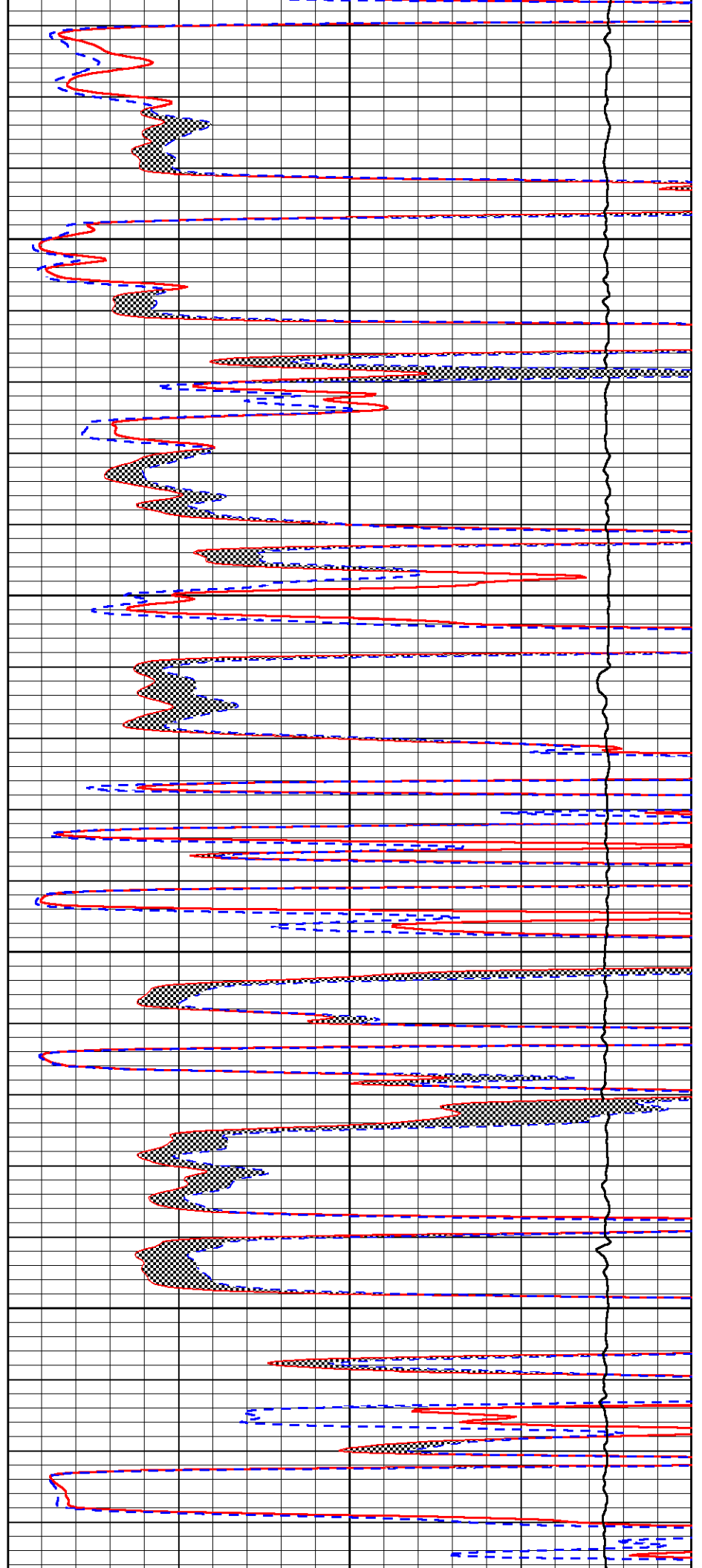


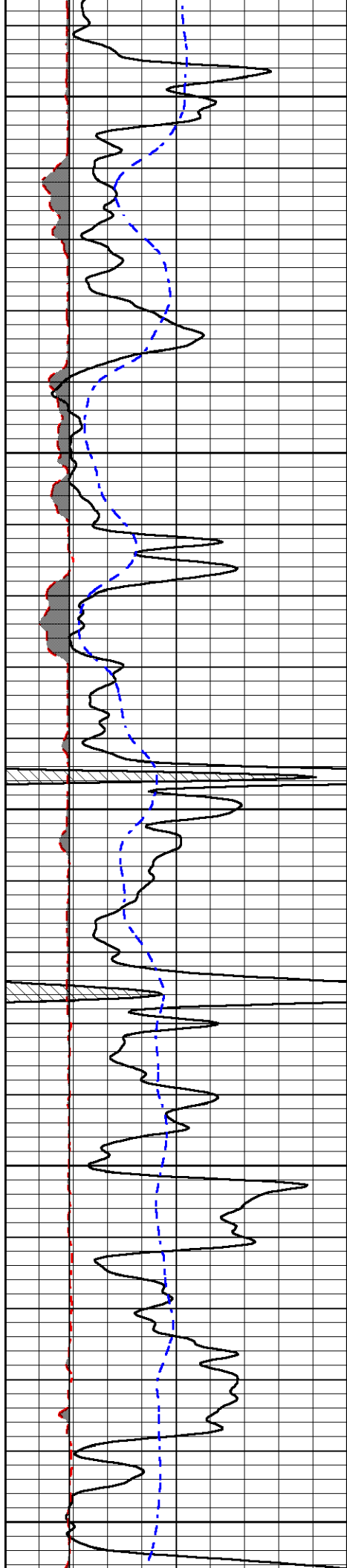
3800

3850

3900

3950





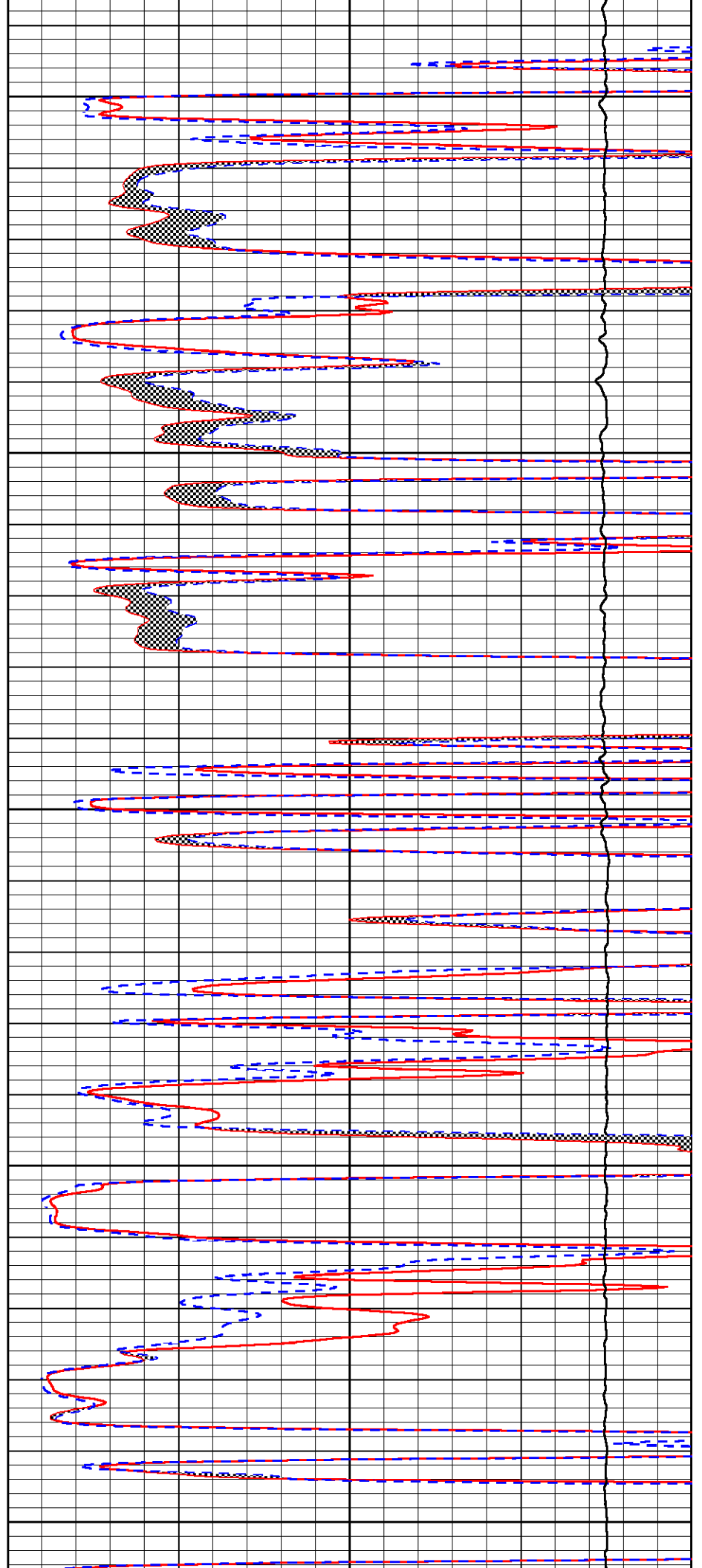
4000

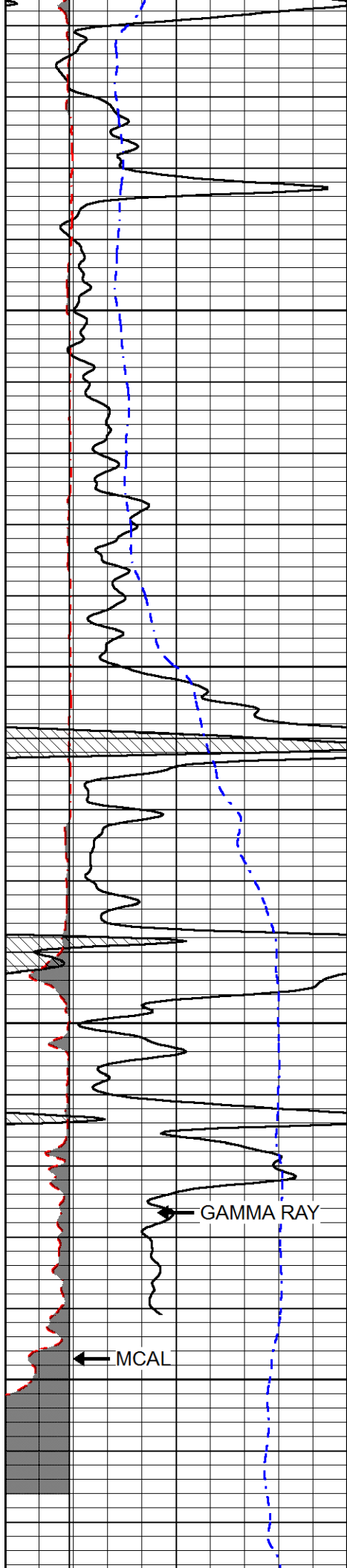
4050

4100

4150

4200



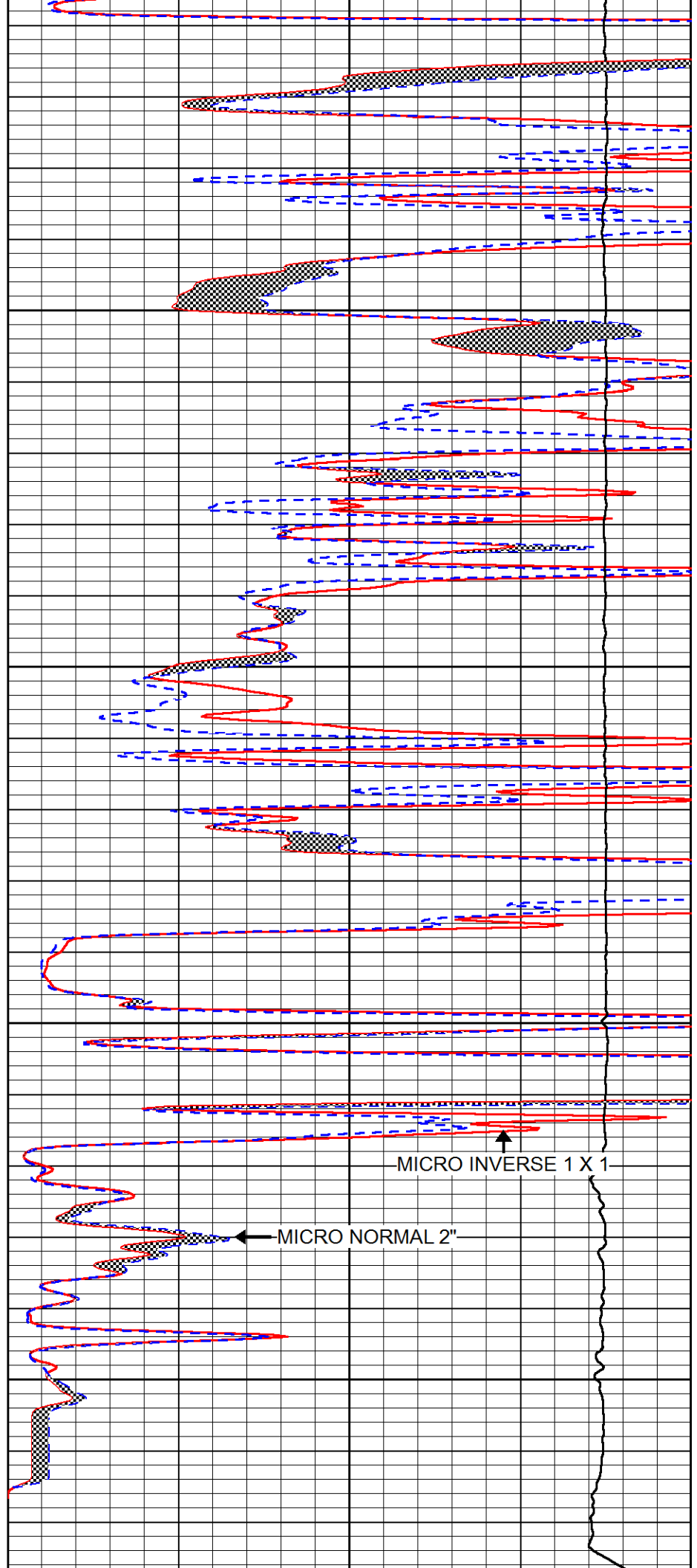


4250

4300

4350

4400



MICRO INVERSE 1 X 1

MICRO NORMAL 2"

0	GAMMA RAY (GAPI)	150
6	MCAL (in)	16
6	Bit Size (in)	16
-200	sp (mV)	0

0	MICRO INVERSE 1 X 1 (Ohm-m)	40
0	MICRO NORMAL 2" (Ohm-m)	40
10000	Line Weight (lb)	0

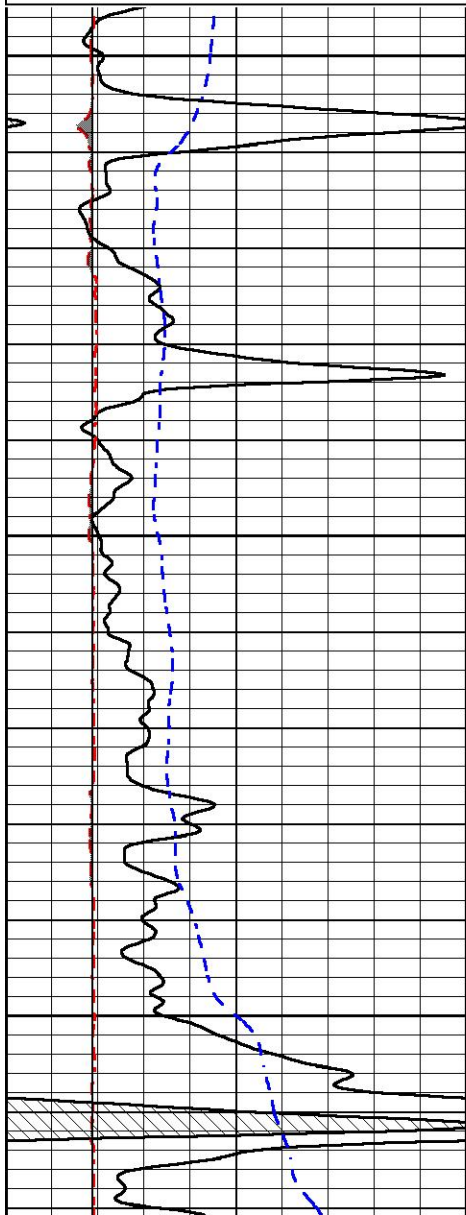


Repeat Section

Database File arp_dechant_1.db
 Dataset Pathname stackml/pass2.1
 Presentation Format _micro
 Dataset Creation Wed Feb 03 22:58:10 2021
 Charted by Depth in Feet scaled 1:240

0	GAMMA RAY (GAPI)	150
6	MCAL (in)	16
6	Bit Size (in)	16
-200	sp (mV)	0

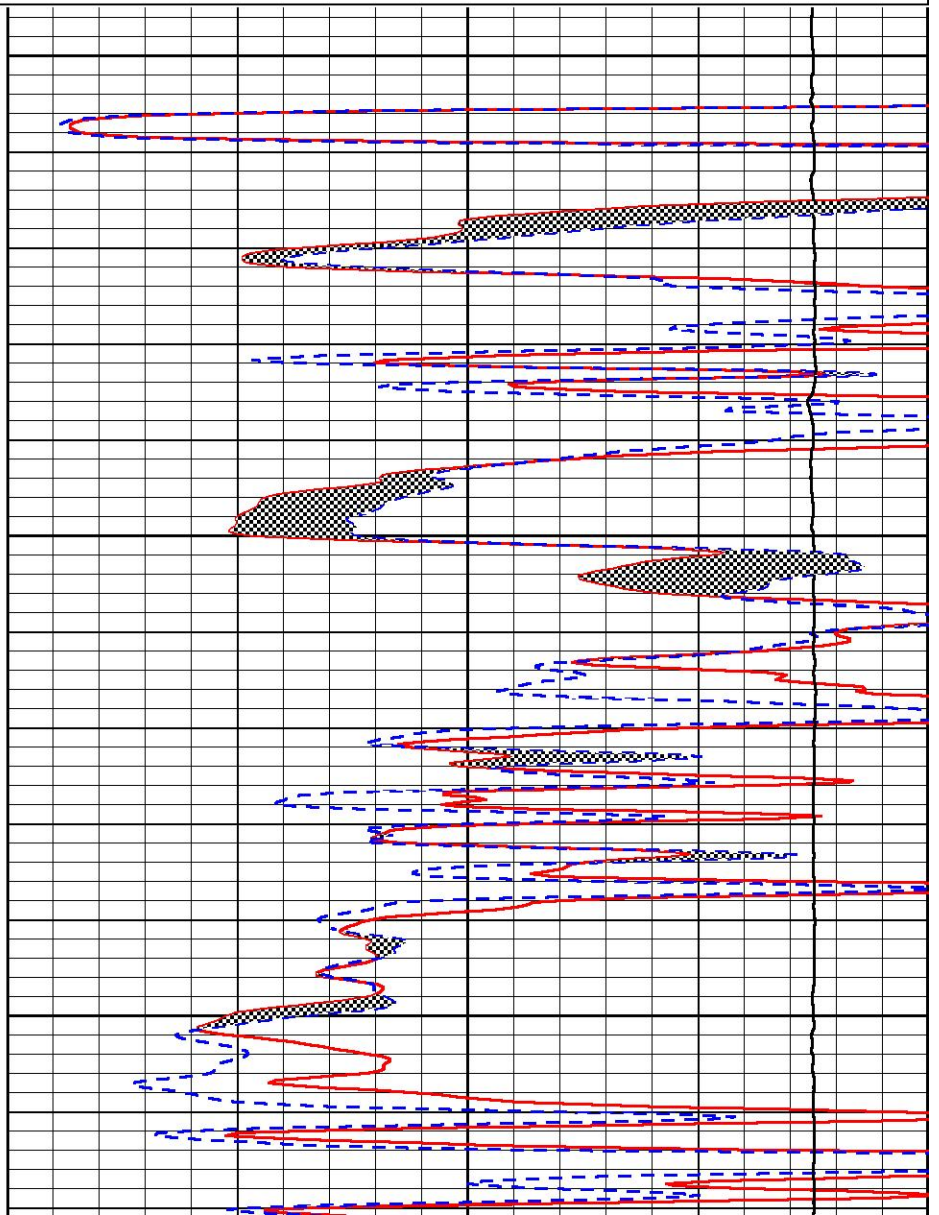
0	MICRO INVERSE 1 X 1 (Ohm-m)	40
0	MICRO NORMAL 2" (Ohm-m)	40
10000	Line Weight (lb)	0

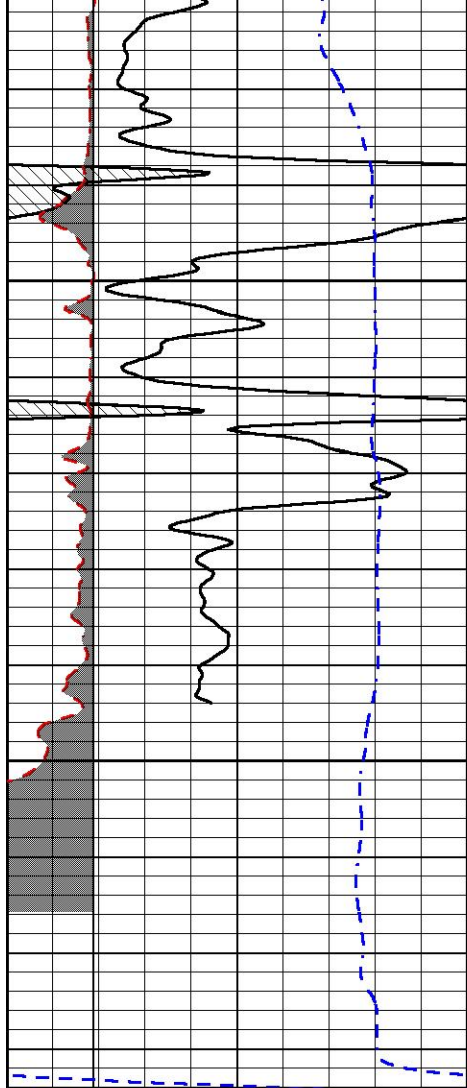


4200

4250

4300

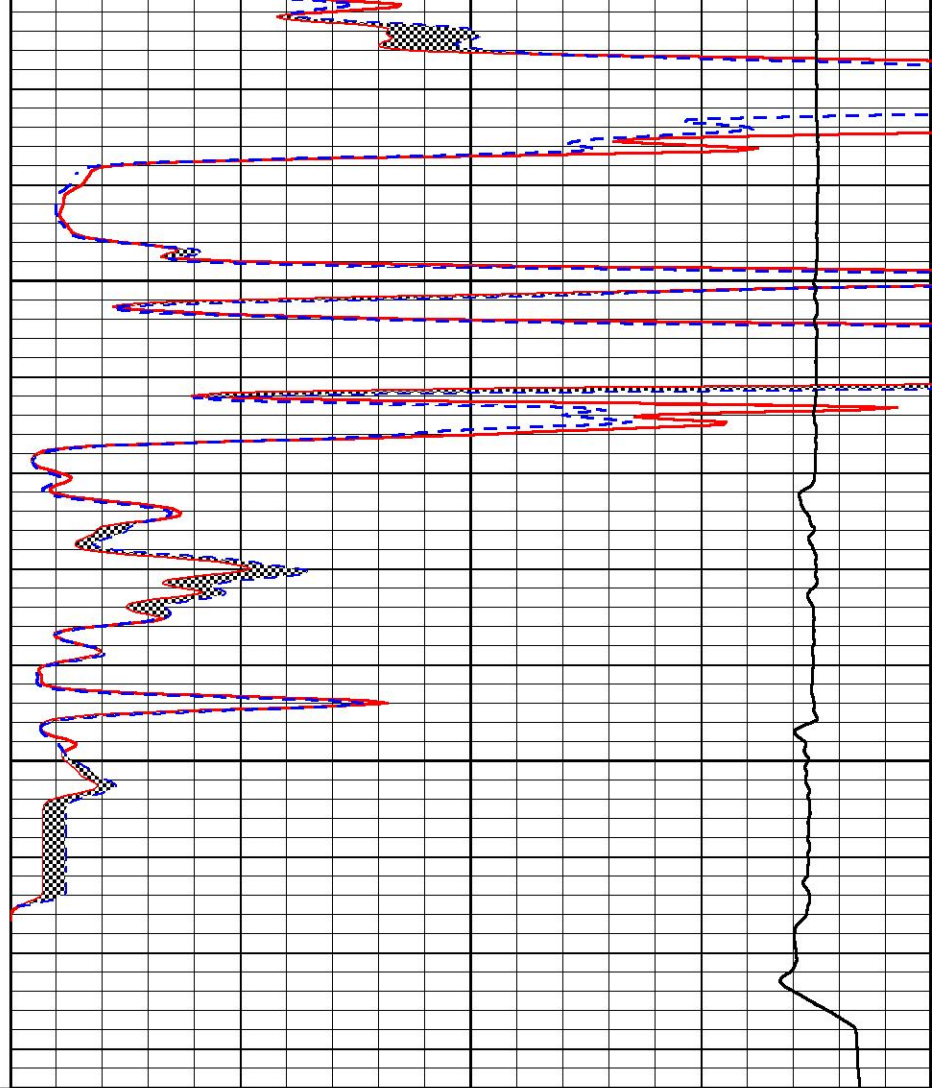




4350

4400

0	GAMMA RAY (GAPI)	150
6	MCAL (in)	16
6	Bit Size (in)	16
-200	sp (mV)	0



0	MICRO INVERSE 1 X 1 (Ohm-m)	40
0	MICRO NORMAL 2" (Ohm-m)	40
10000	Line Weight (lb)	0



Company	ARP Operating, LLC
Well	Dechant #1
Field	Wildcat
County	Ness
State	Kansas