



DUAL INDUCTION
LL3/GR LOG

Company JOHN BRICKLEY DBA B8 INVESTMENTS
Well SEGLEM # 6
Field REYNOLDS-SCHAFFER
County BUTLER
State KANSAS

Company JOHN BRICKLEY DBA B8 INVESTMENTS
Well SEGLEM # 6
Field REYNOLDS-SCHAFFER
County BUTLER State KANSAS

Location: API #: 15-015-24197-00-00
E/2 NE NW NW
330' FNL & 1060' FWL
SEC 16 TWP 27S RGE 6E
Permanent Datum GL Elevation 1400
Log Measured From KB 12
Drilling Measured From KB
Other Services
CDLN
MICRO
Elevation
K.B. 1412
D.F. 1411
G.L. 1400

Date	4-29-2023
Run Number	ONE
Depth Driller	3190
Depth Logger	3187
Bottom Logged Interval	3185
Top Log Interval	210
Casing Driller	8.625" @ 210
Casing Logger	8.625" @ 222 GL
Bit Size	7.875"
Type Fluid in Hole	MUD
Density / Viscosity	9.2 / 42
pH / Fluid Loss	10 / 9.6
Source of Sample	PIT
Rm @ Meas. Temp	2.1 @ 70
Rmf @ Meas. Temp	1.68 @ 70
Rmc @ Meas. Temp	2.52 @ 70
Source of Rmf / Rmc	CALC
Rm @ BHT	1.26 @ 109
Time Circulation Stopped	1:00 PM
Time Logger on Bottom	9:00 PM
Maximum Recorded Temperature	109
Equipment Number	OW1
Location	HOMINY, OK
Recorded By	SHELDON TYLER
Witnessed By	MR. BRICKLEY

<<< Fold Here >>>

All interpretations are opinions based on inferences from electrical or other measurements and we cannot and do not guarantee the accuracy or correctness of any interpretation, and we shall not, except in the case of gross or willful negligence on our part, be liable or responsible for any loss, costs, damages, or expenses incurred or sustained by anyone resulting from any interpretation made by any of our officers, agents or employees. These interpretations are also subject to our general terms and conditions set out in our current Price Schedule.

Comments

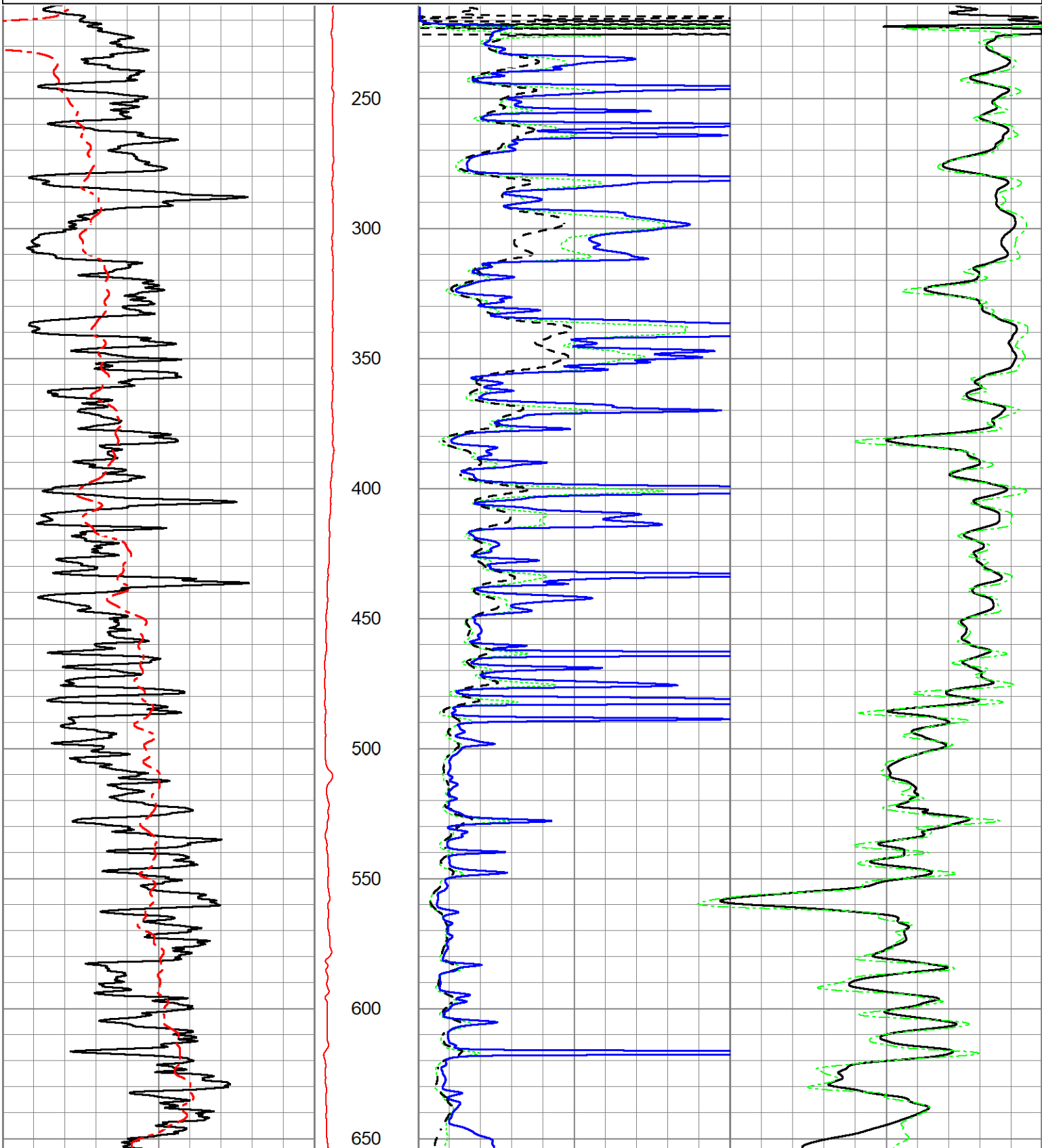
FILE # OW1-9122 JOHN BRICKLEY
KIDD, LUKE
THANK YOU FOR USING OSAGE WIRELINE

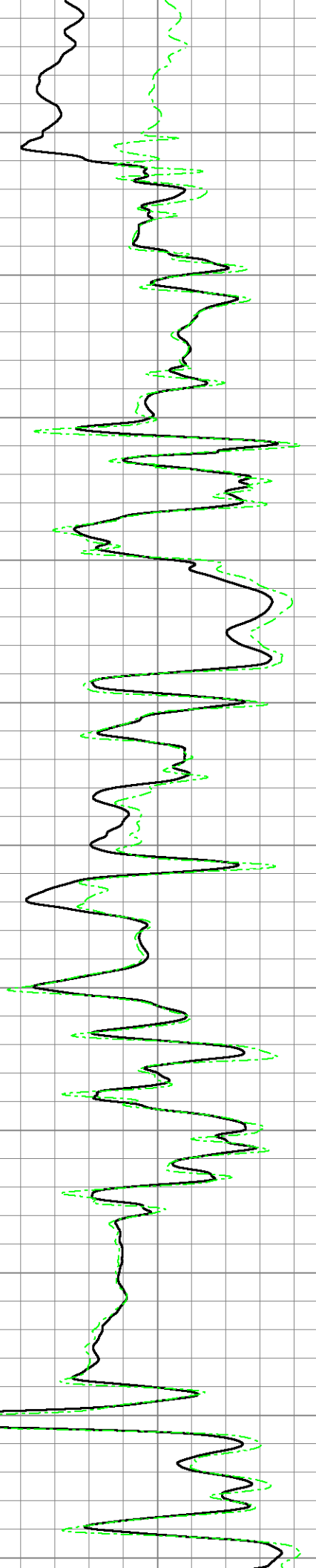
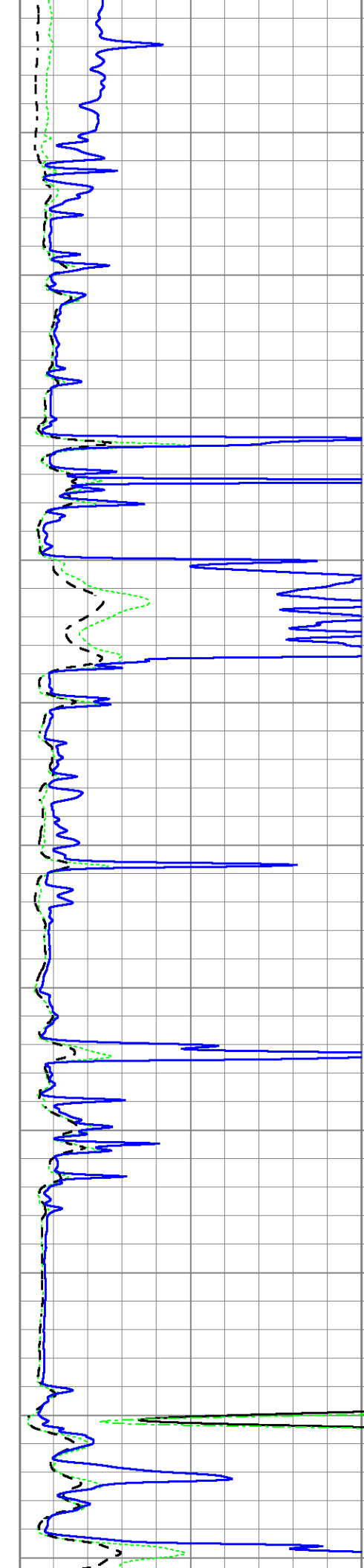
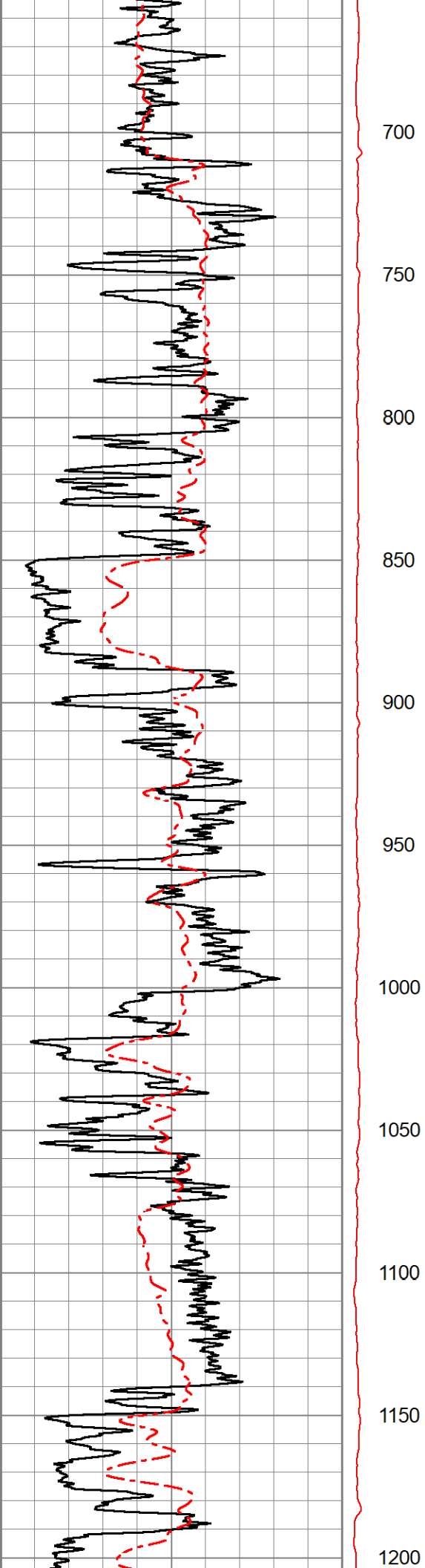


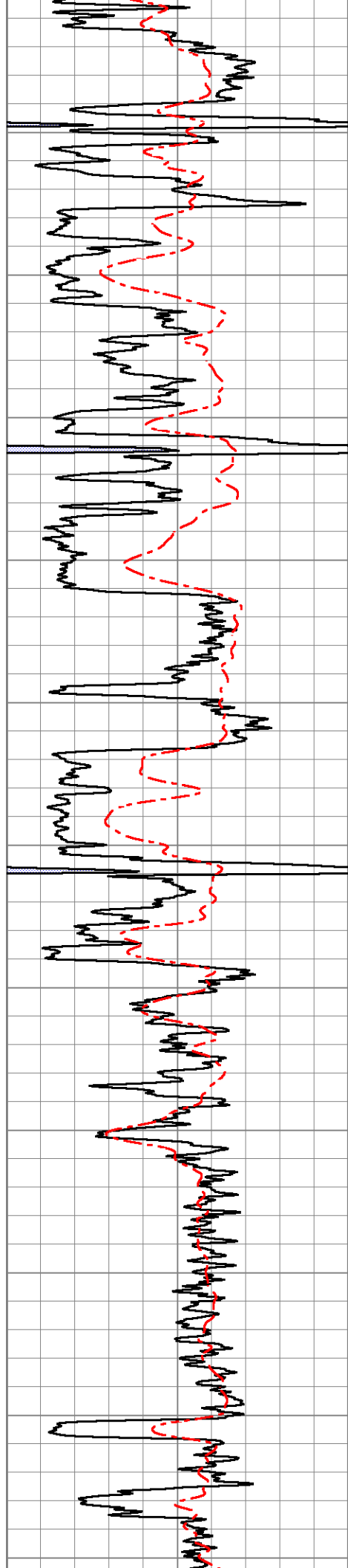
2" DUAL INDUCTION LOG

Database File ow1-9122 john brickley.db
 Dataset Pathname pass4.5
 Presentation Format st_dil_2inch
 Dataset Creation Sat Apr 29 21:57:03 2023
 Charted by Depth in Feet scaled 1:600

0	GR (GAPI)	150	DEVI	1000	CILD (mmho/m)	0	
0	Spontaneous Potential (mV)	200	0 (deg)	15	1000	CILM (mmho/m)	0
0					RLL3 (Ohm-m)	50	
0					RILM (Ohm-m)	50	
0					RILD (Ohm-m)	50	







1250

1300

1350

1400

1450

1500

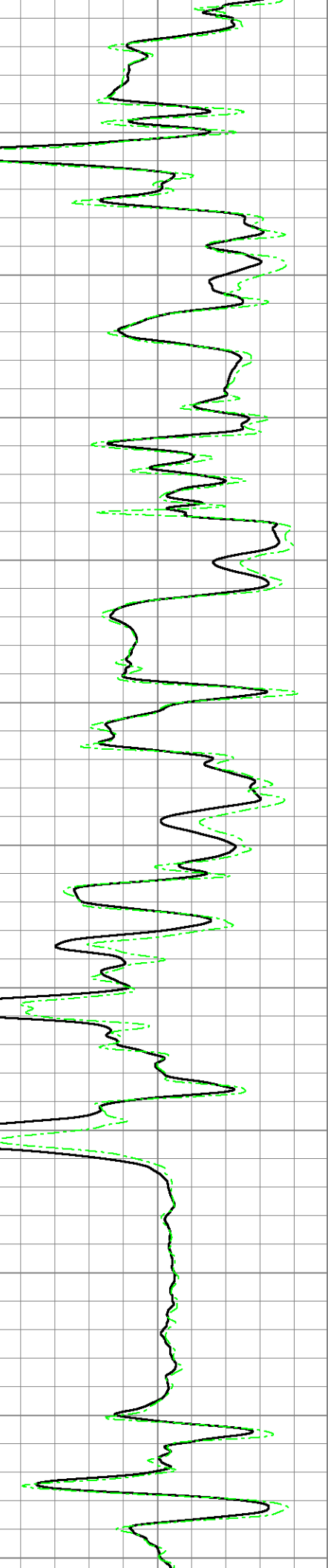
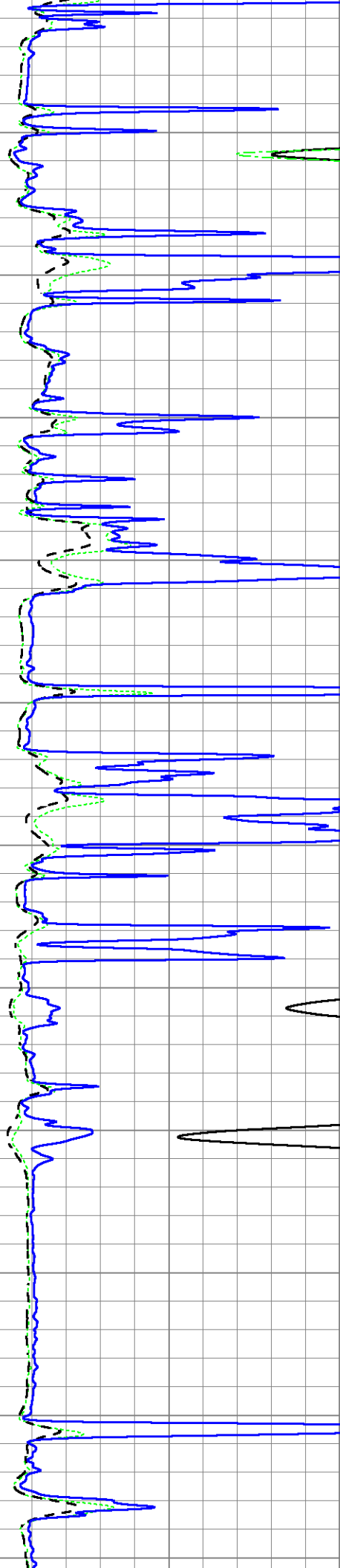
1550

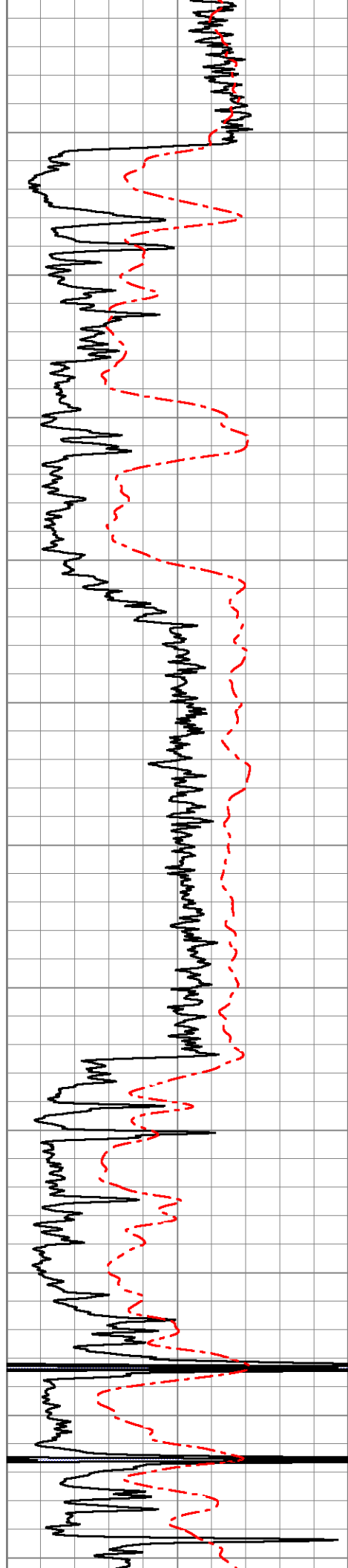
1600

1650

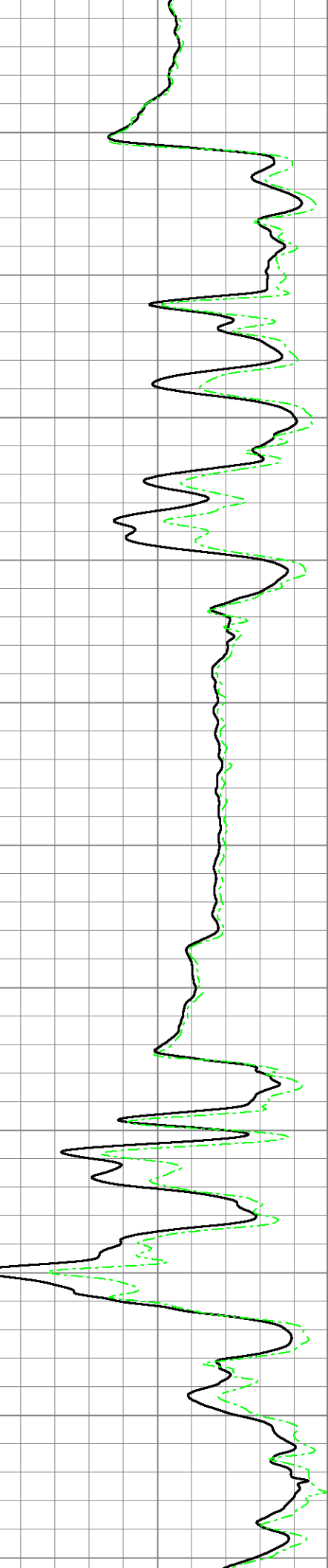
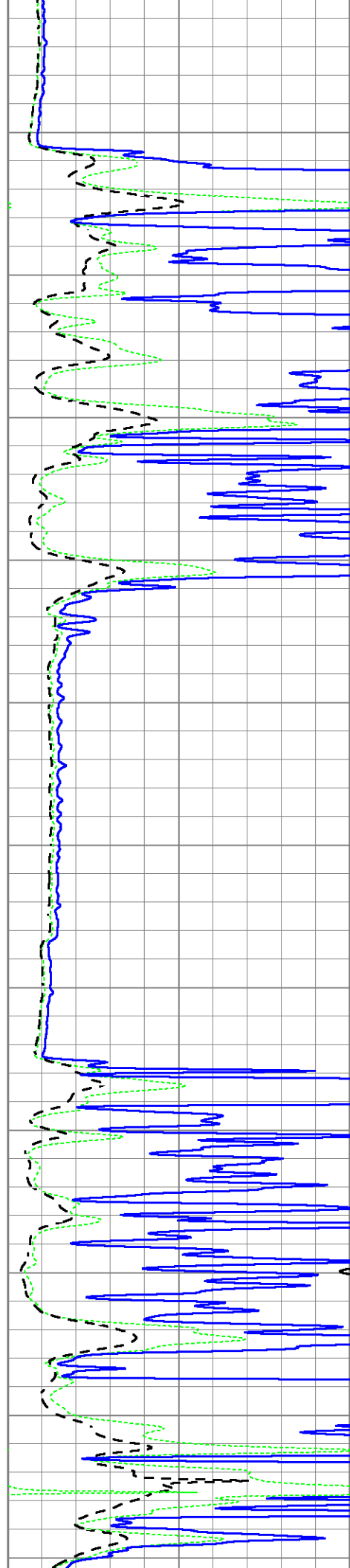
1700

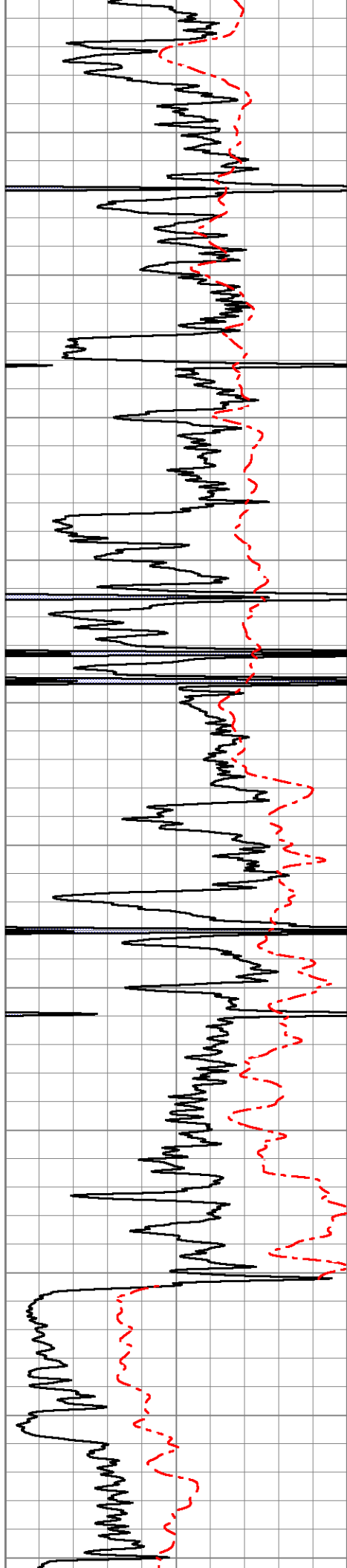
1750





1800
1850
1900
1950
2000
2050
2100
2150
2200
2250
2300





2350

2400

2450

2500

2550

2600

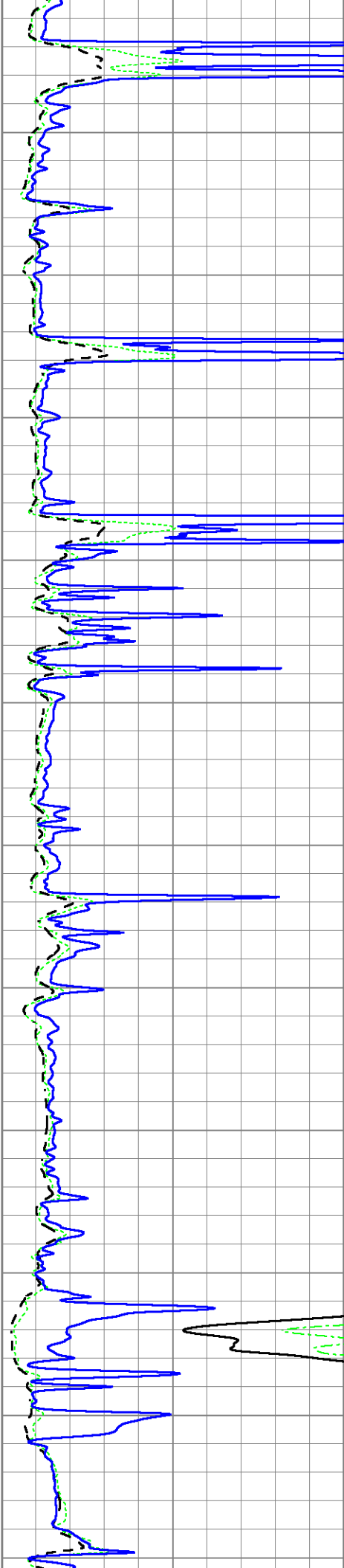
2650

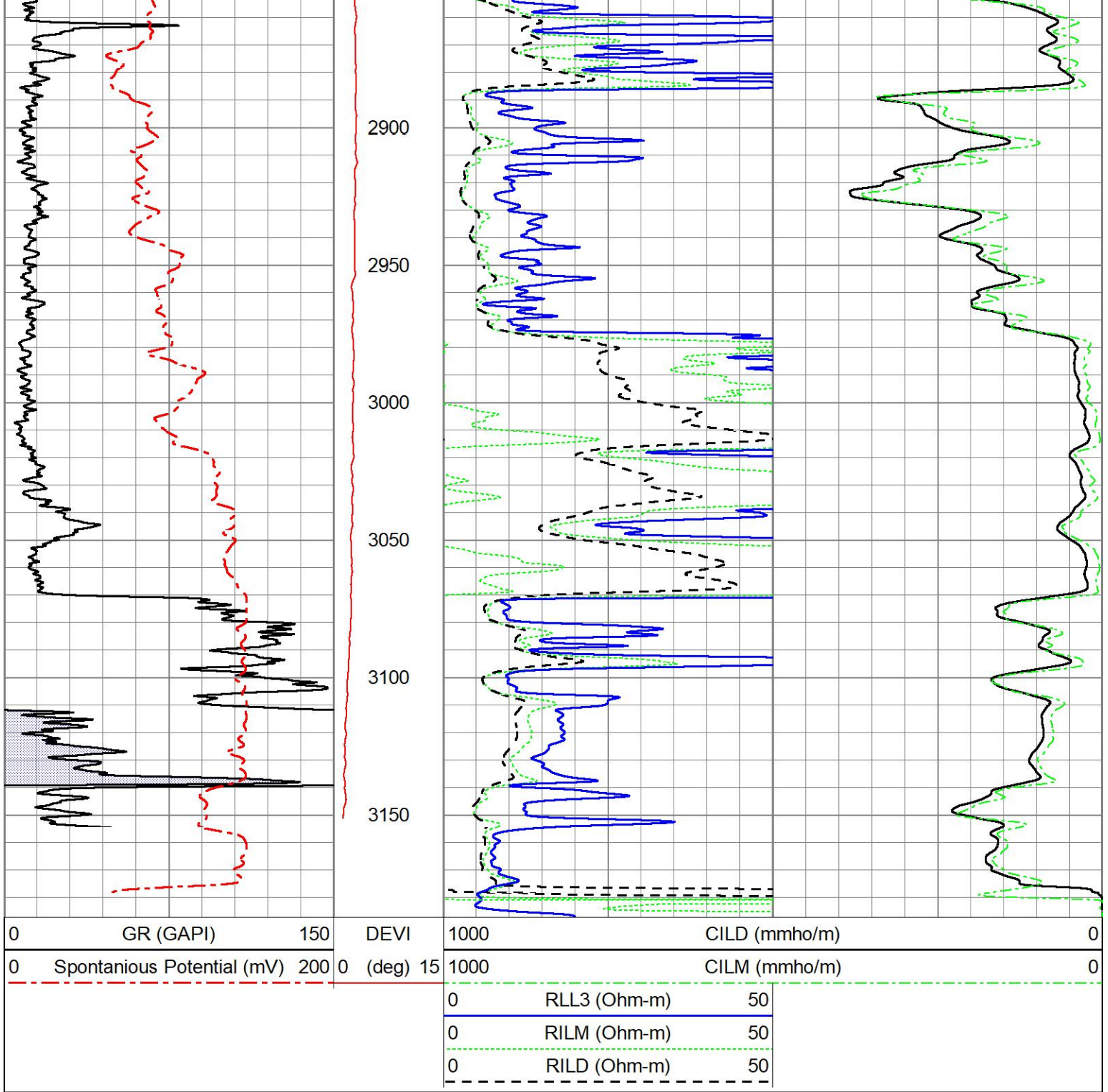
2700

2750

2800

2850



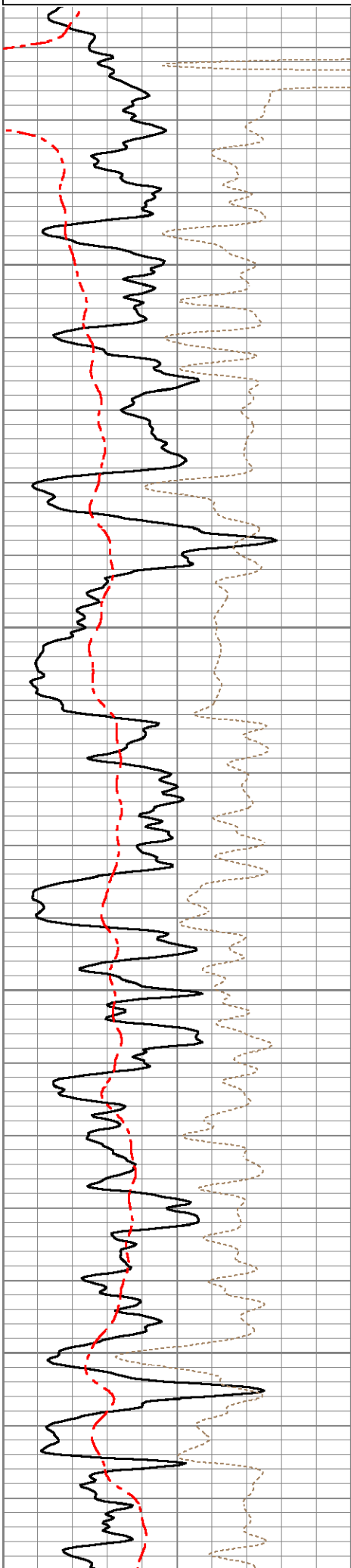


5" DUAL INDUCTION LOG

Database File ow1-9122 john brickley.db
 Dataset Pathname pass4.4
 Presentation Format st-dil_5
 Dataset Creation Sat Apr 29 21:55:44 2023
 Charted by Depth in Feet scaled 1:240

0	Gamma Ray (GAPI)	150	DEVI	0.2	Shallow Resistivity (Ohm-m)	2000
0	Spontaneous Potential (mV)	200	0 (deg)	10	Deep Resistivity (Ohm-m)	2000
-140	RxoRt	50		0.2	Medium Resistivity (Ohm-m)	2000
					DEVI (deg)	

DEVI (deg)



250

300

350

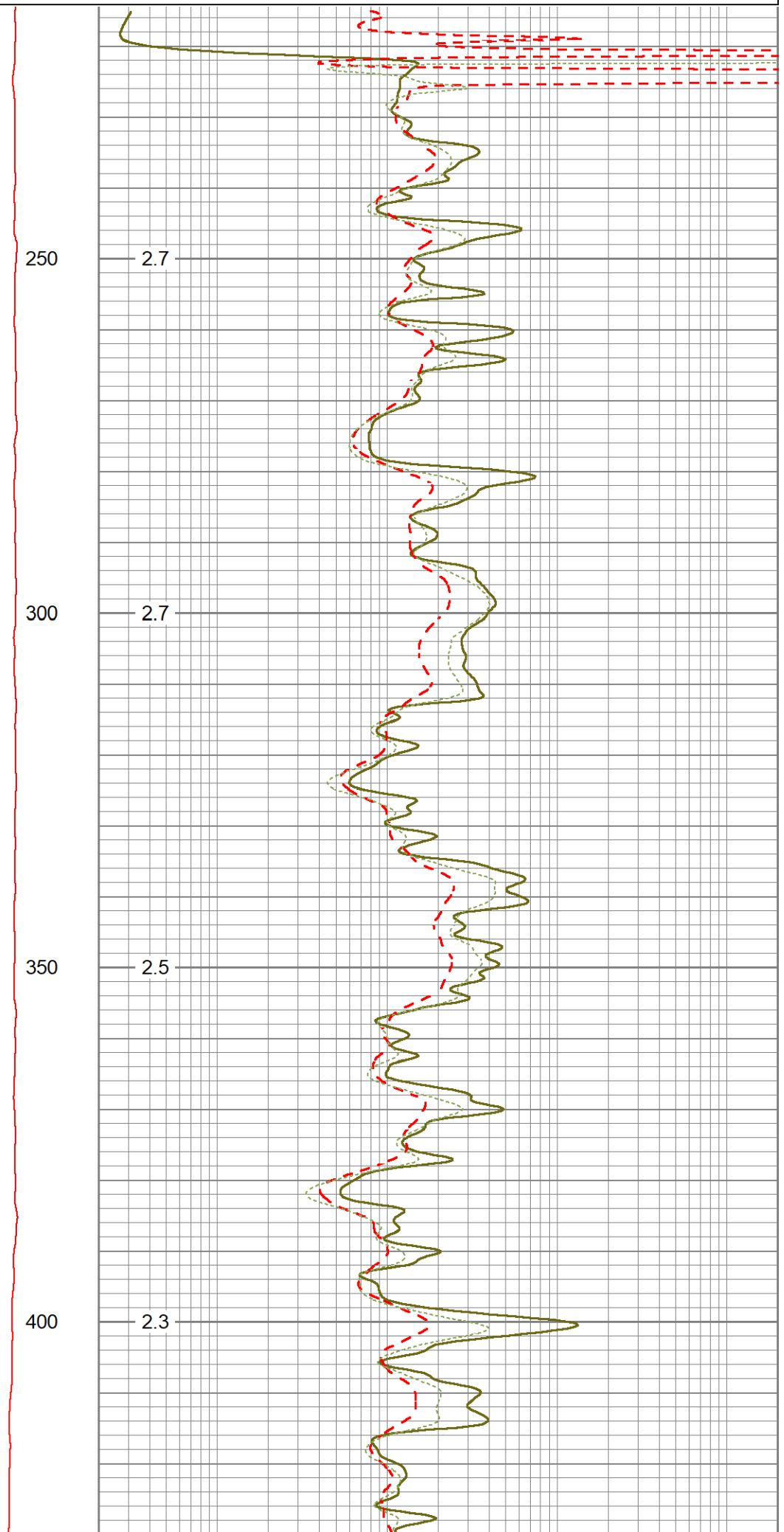
400

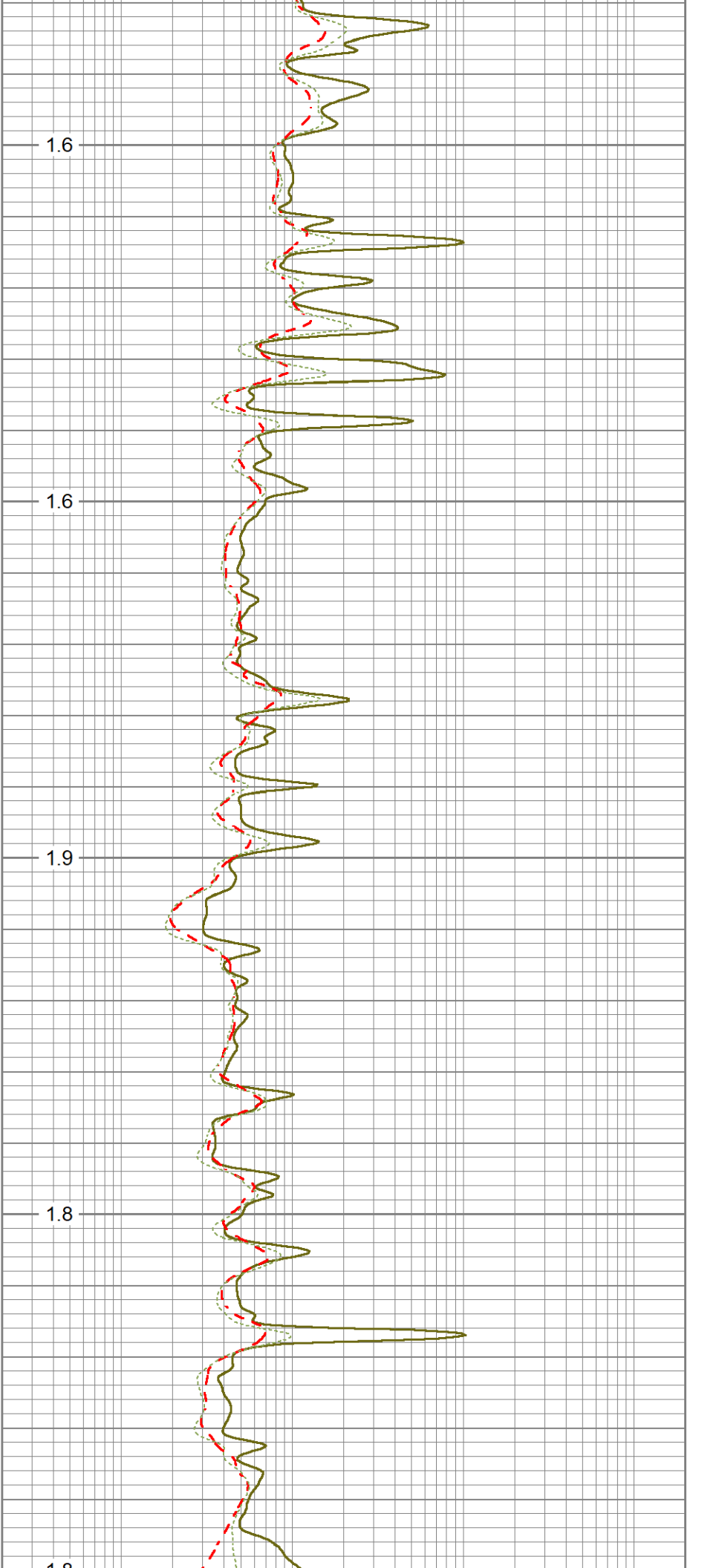
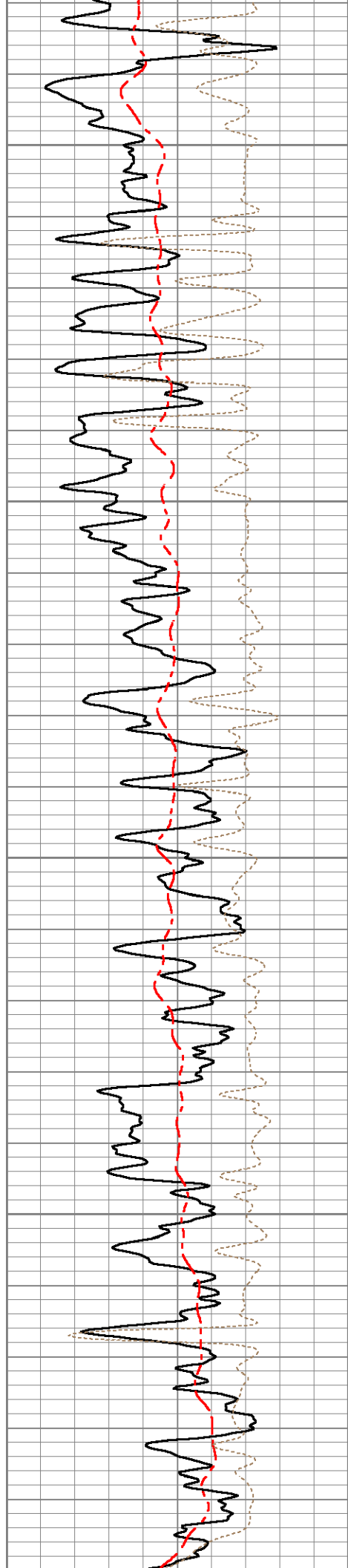
2.7

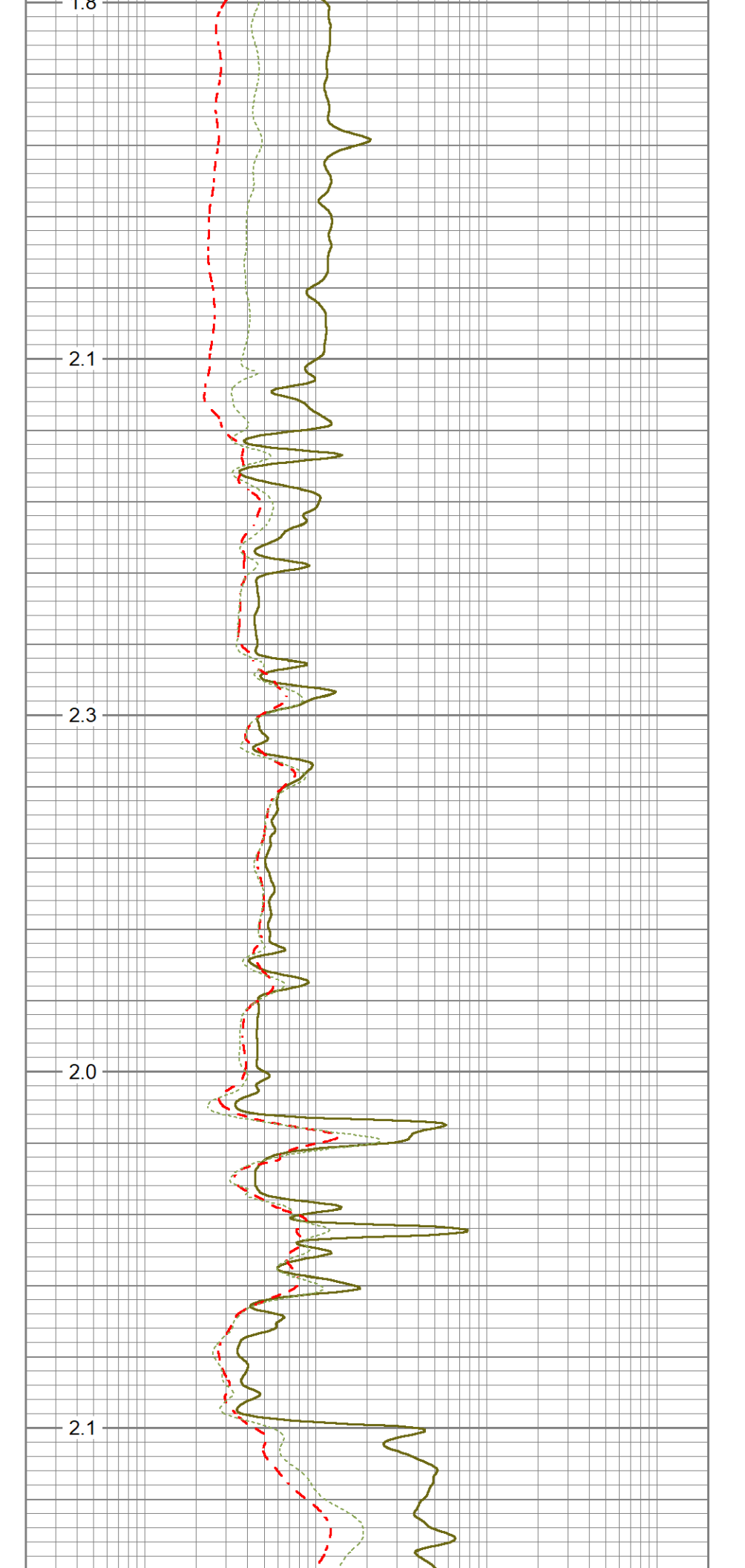
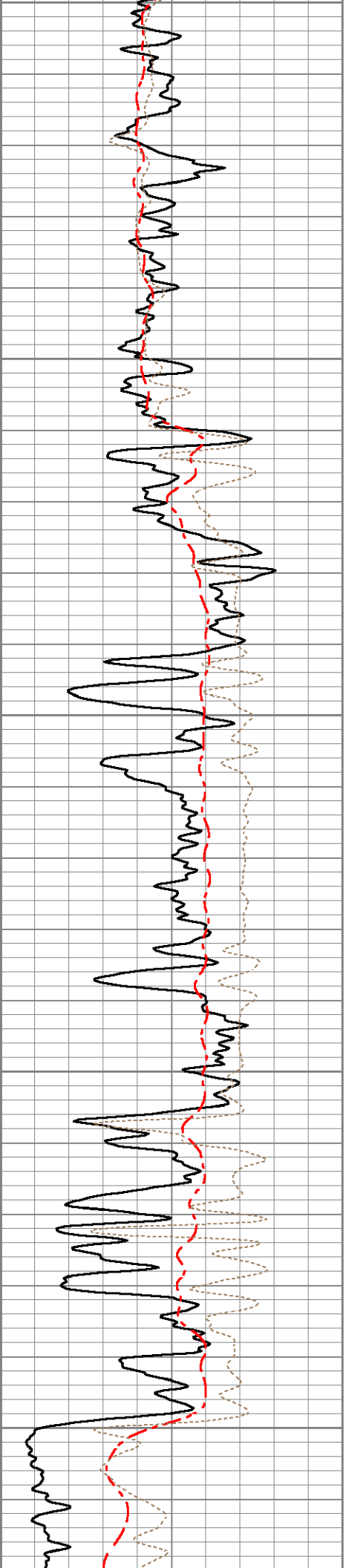
2.7

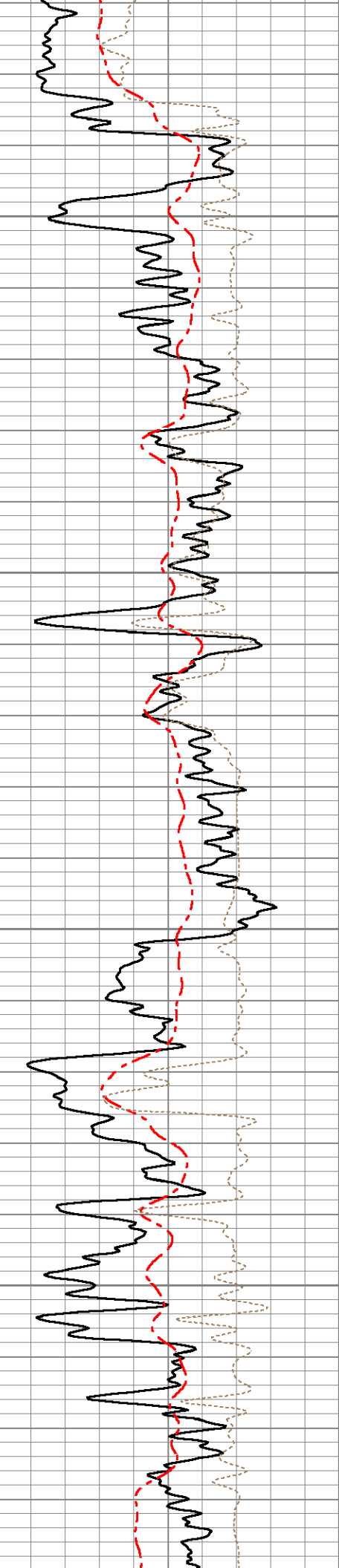
2.5

2.3









900

950

1000

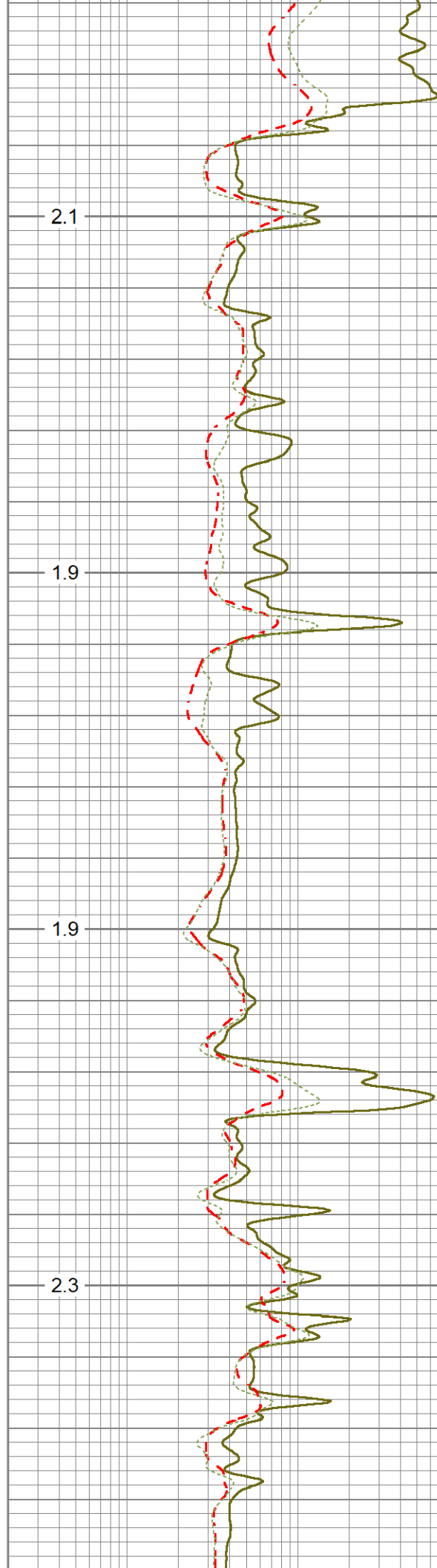
1050

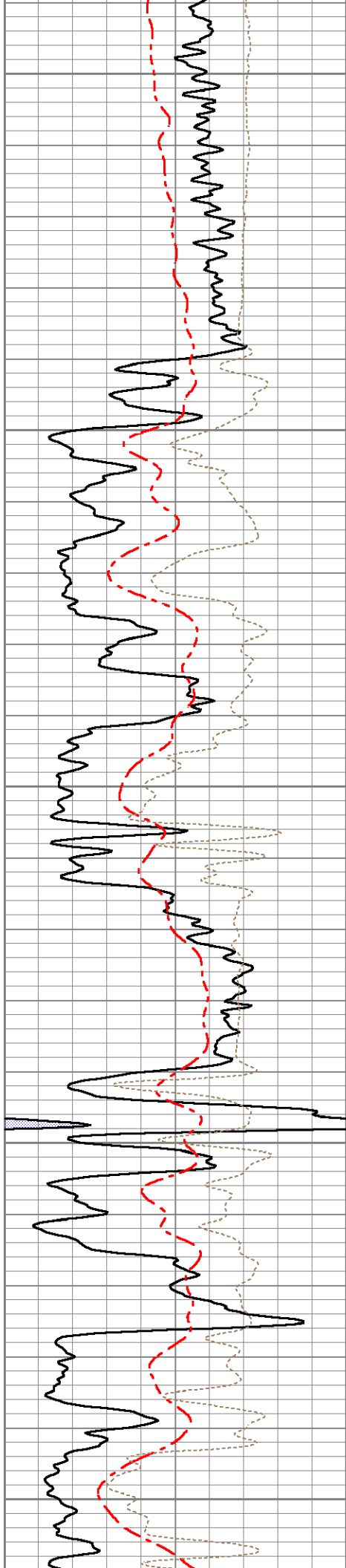
2.1

1.9

1.9

2.3





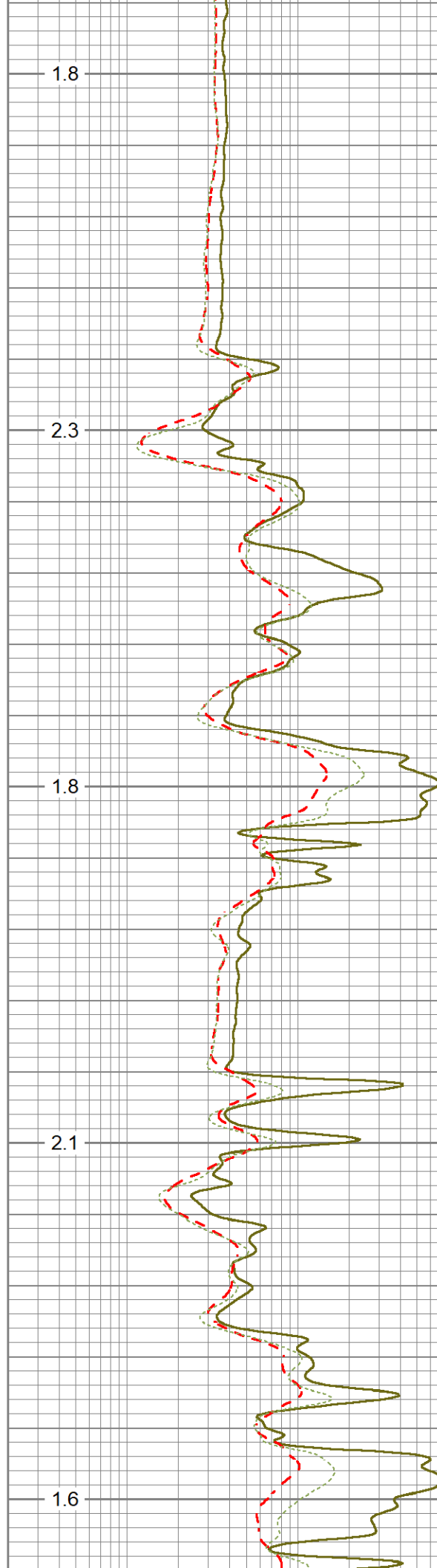
1100

1150

1200

1250

1300



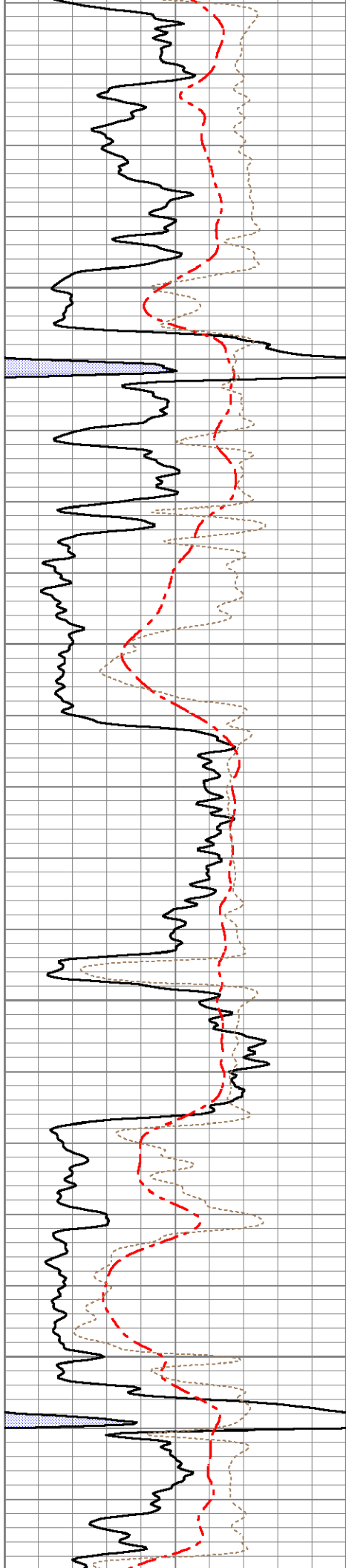
1.8

2.3

1.8

2.1

1.6

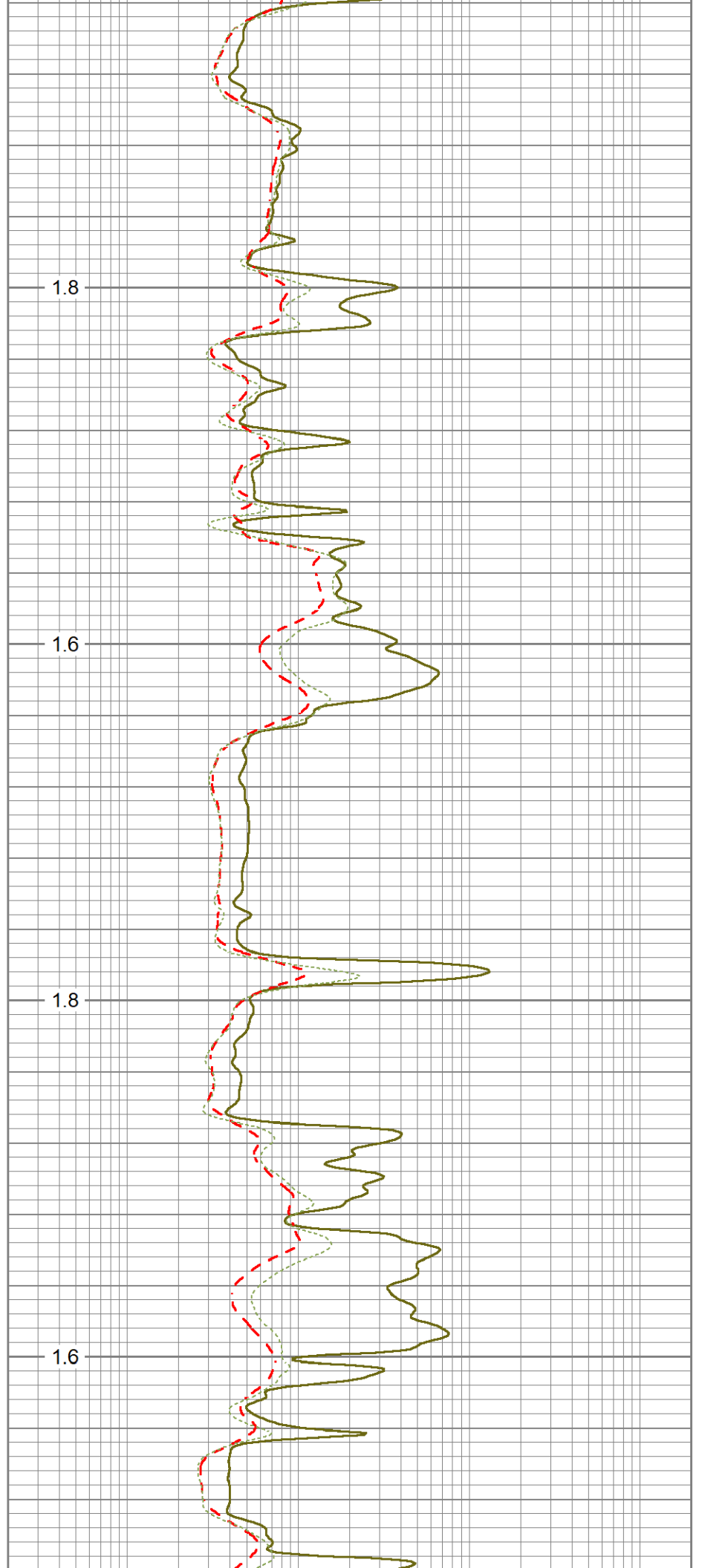


1350

1400

1450

1500

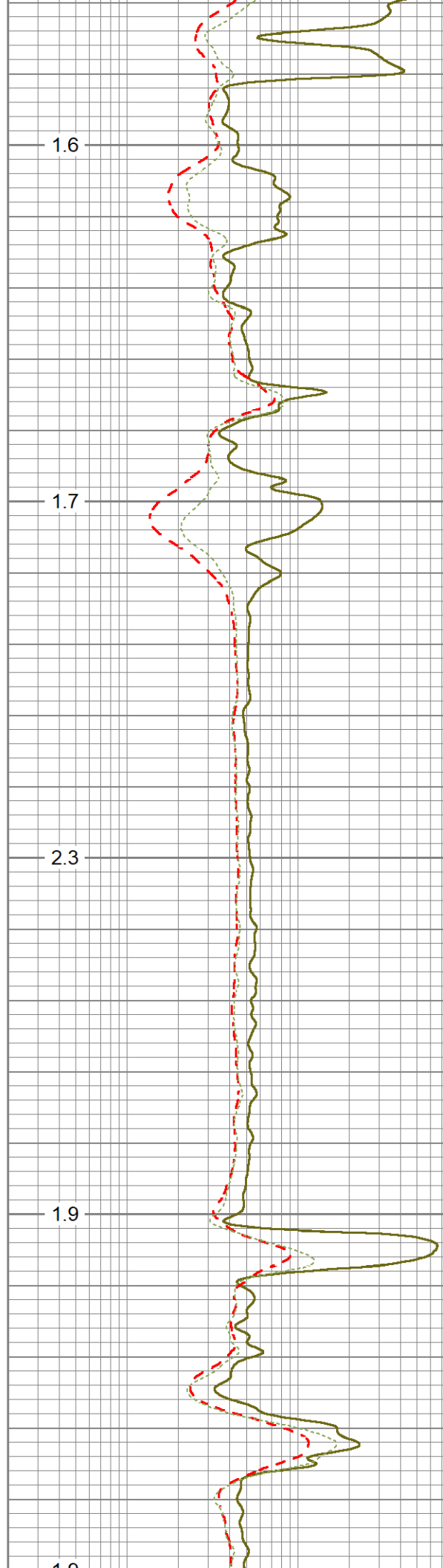
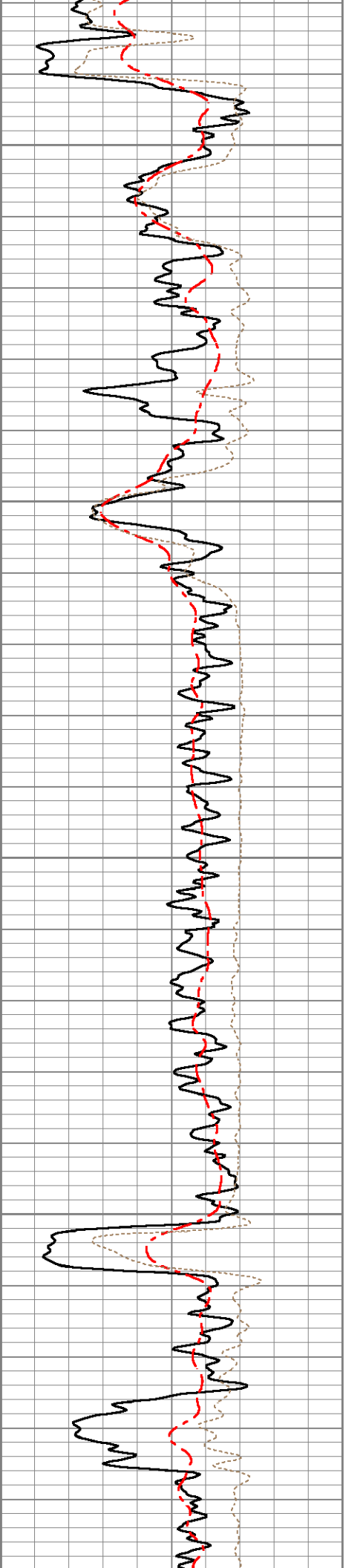


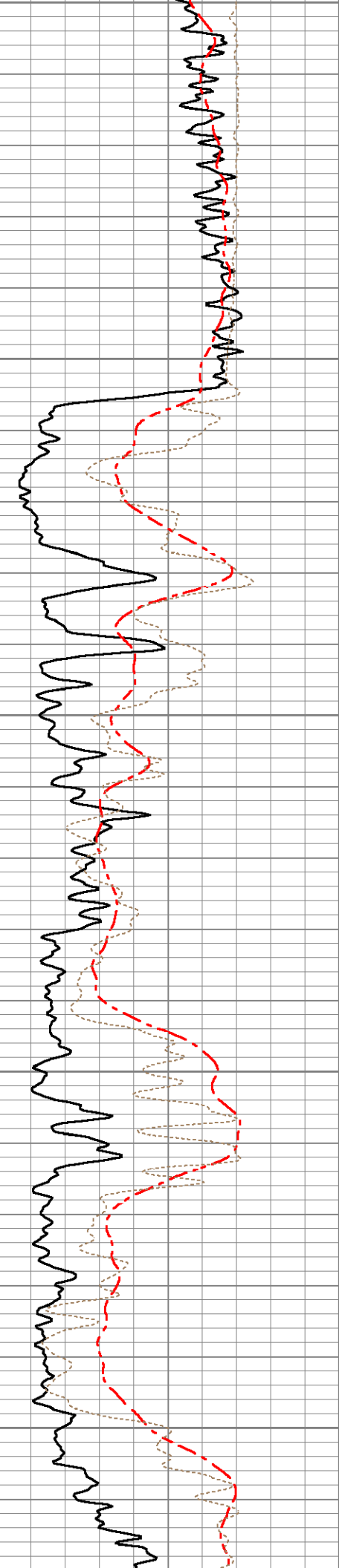
1.8

1.6

1.8

1.6





1750

1800

1850

1900

1950

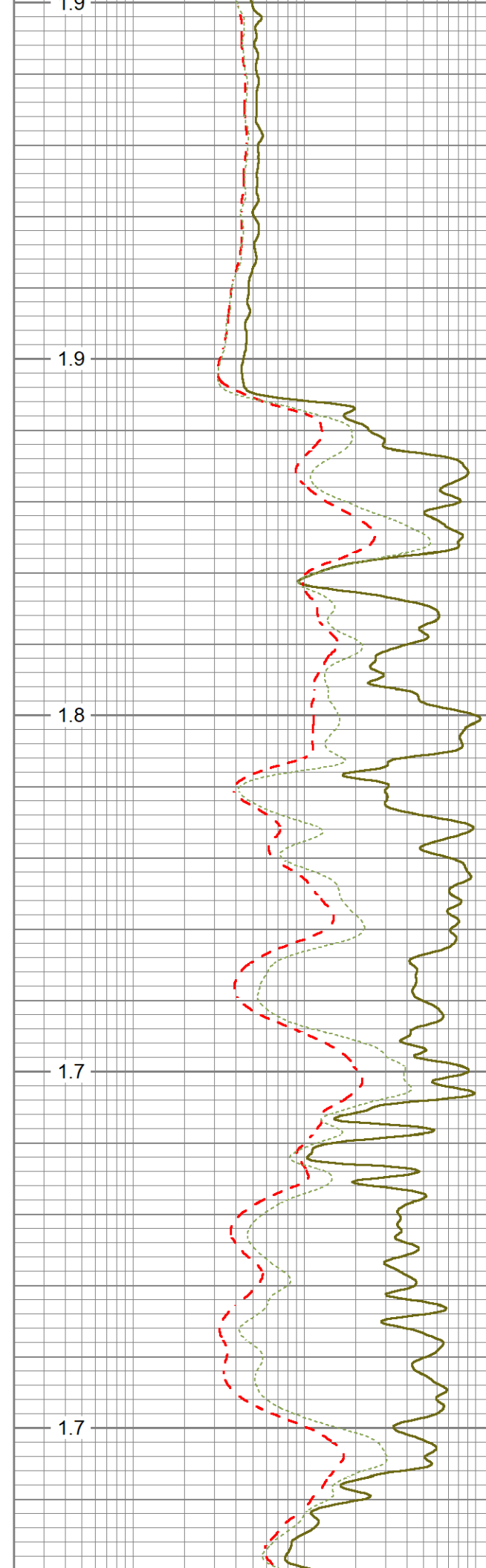
1.9

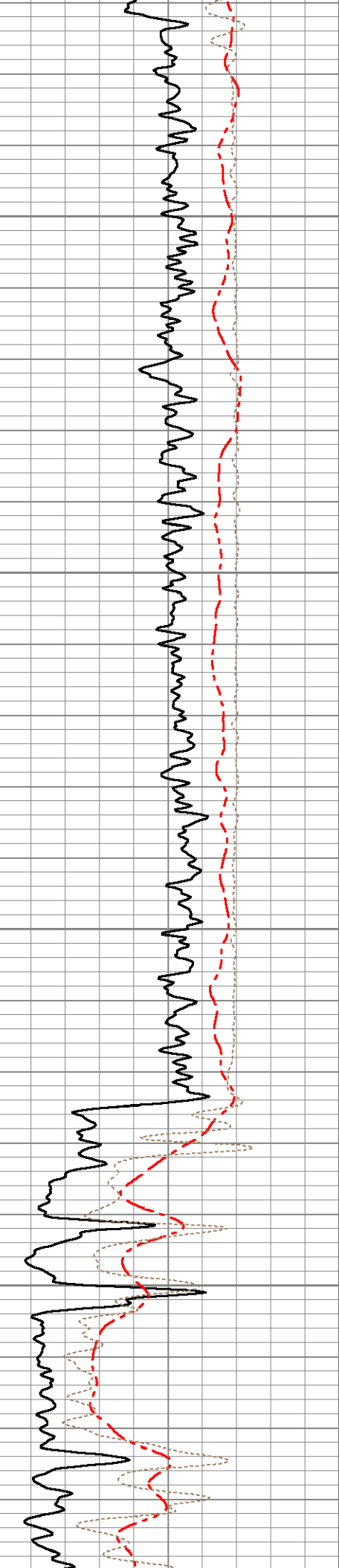
1.9

1.8

1.7

1.7



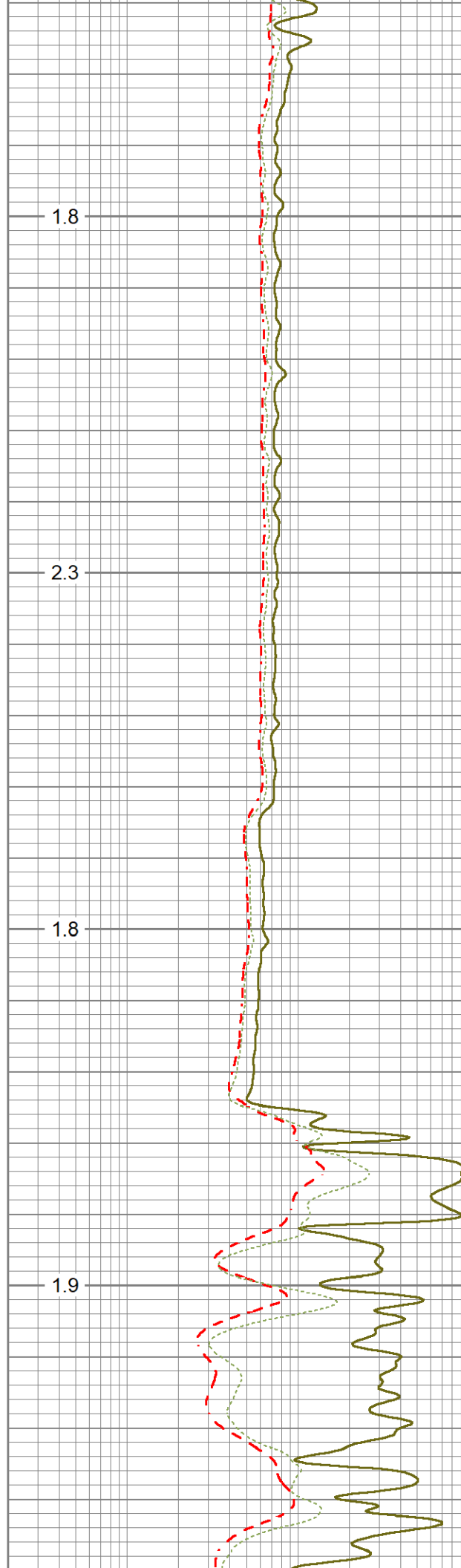


2000

2050

2100

2150

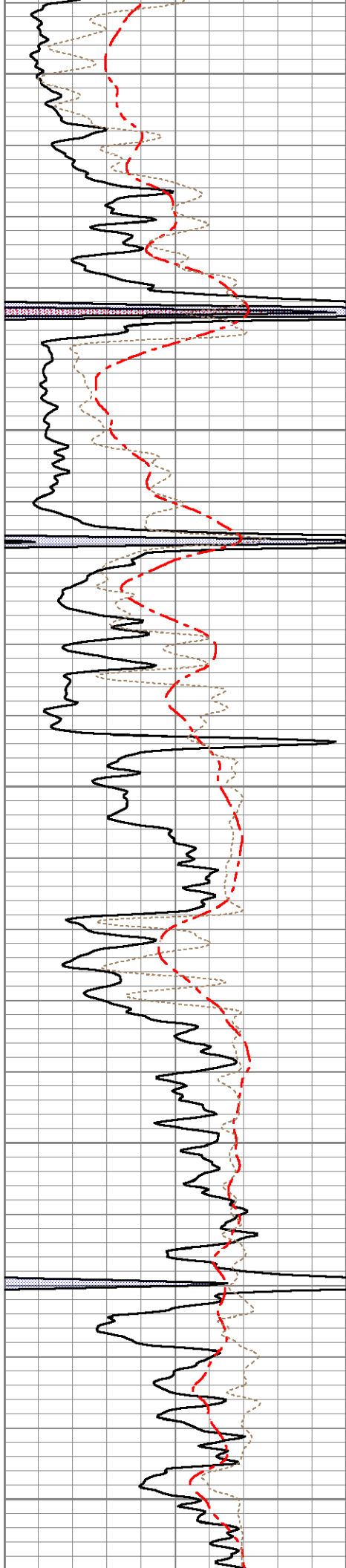


1.8

2.3

1.8

1.9



2200

2250

2300

2350

2400

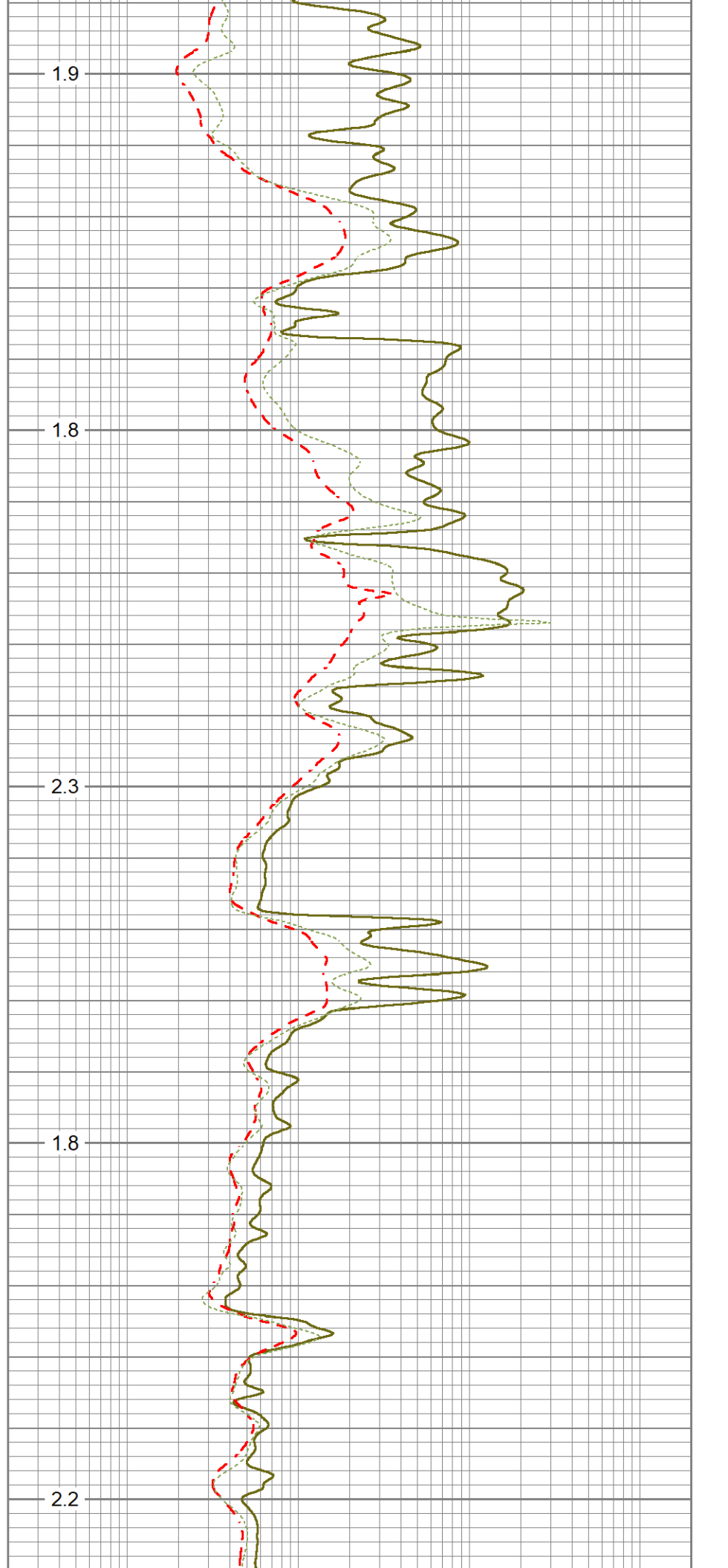
1.9

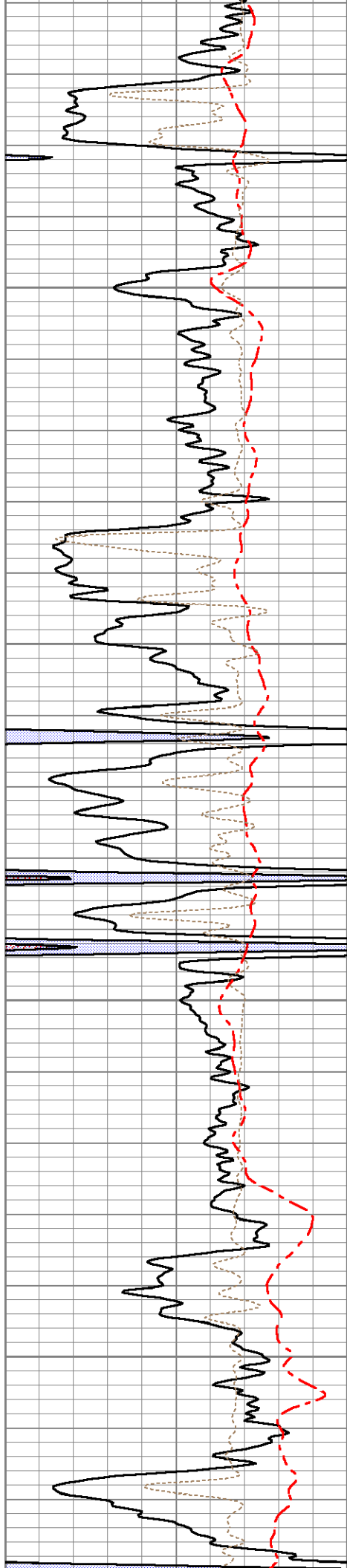
1.8

2.3

1.8

2.2





2450

2500

2550

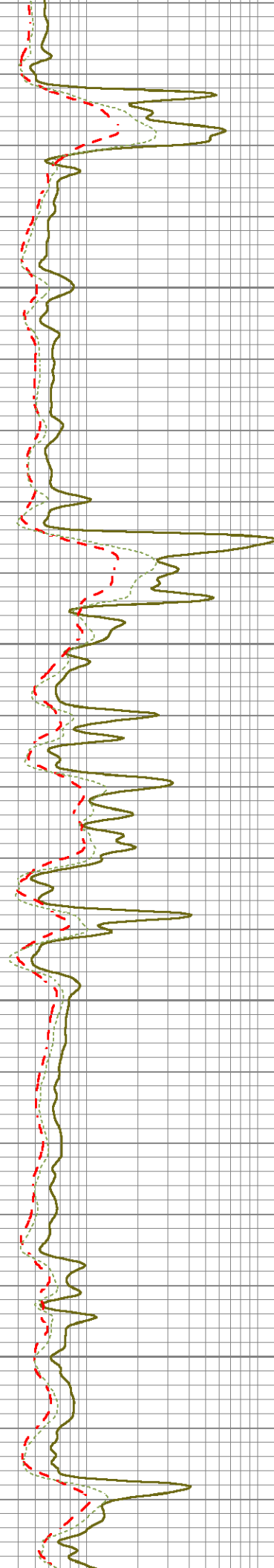
2600

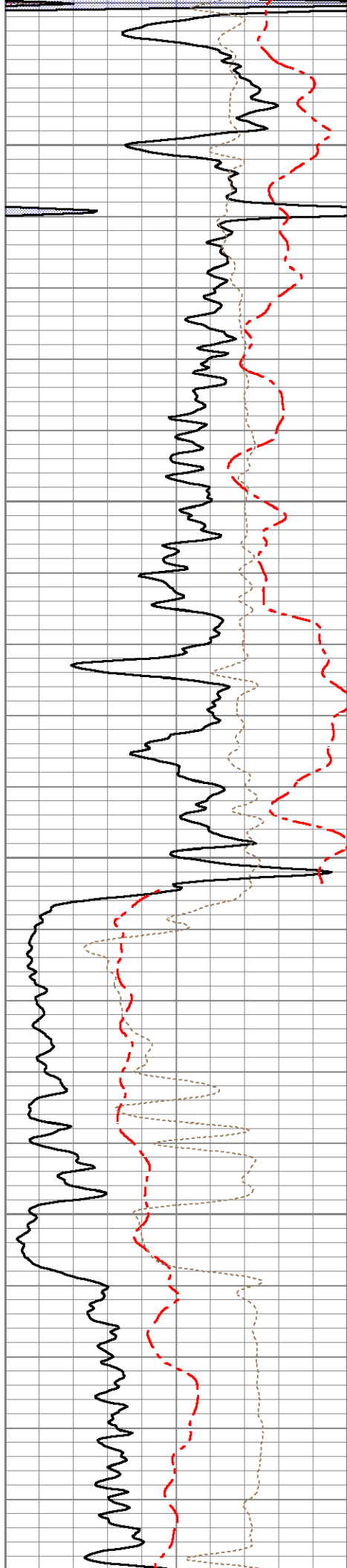
2.2

1.9

2.0

2.0





2650

2700

2750

2800

2850

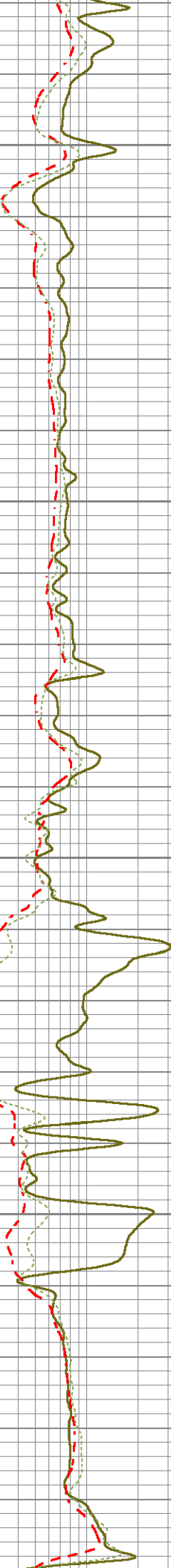
2.1

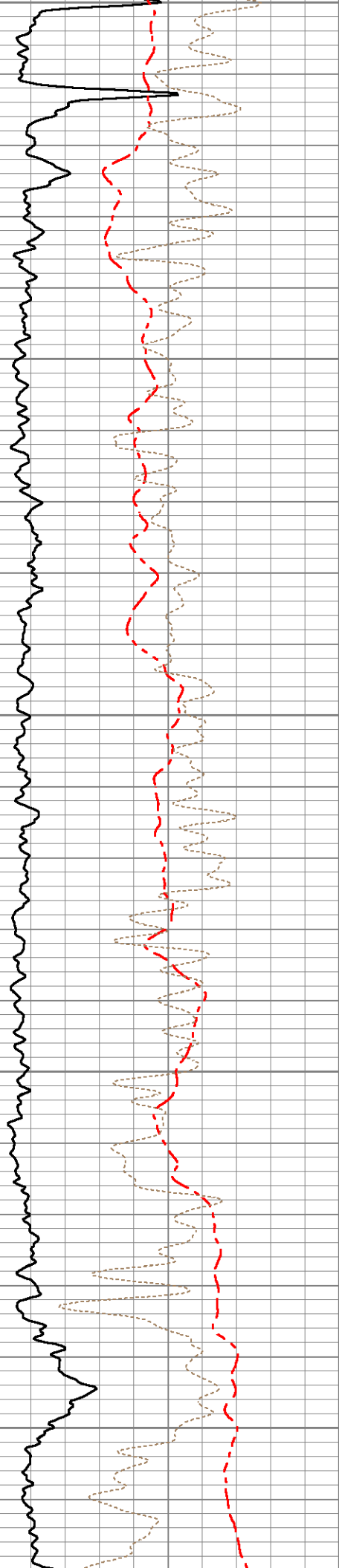
2.5

2.7

2.9

3.0





2850

2900

2950

3000

3050

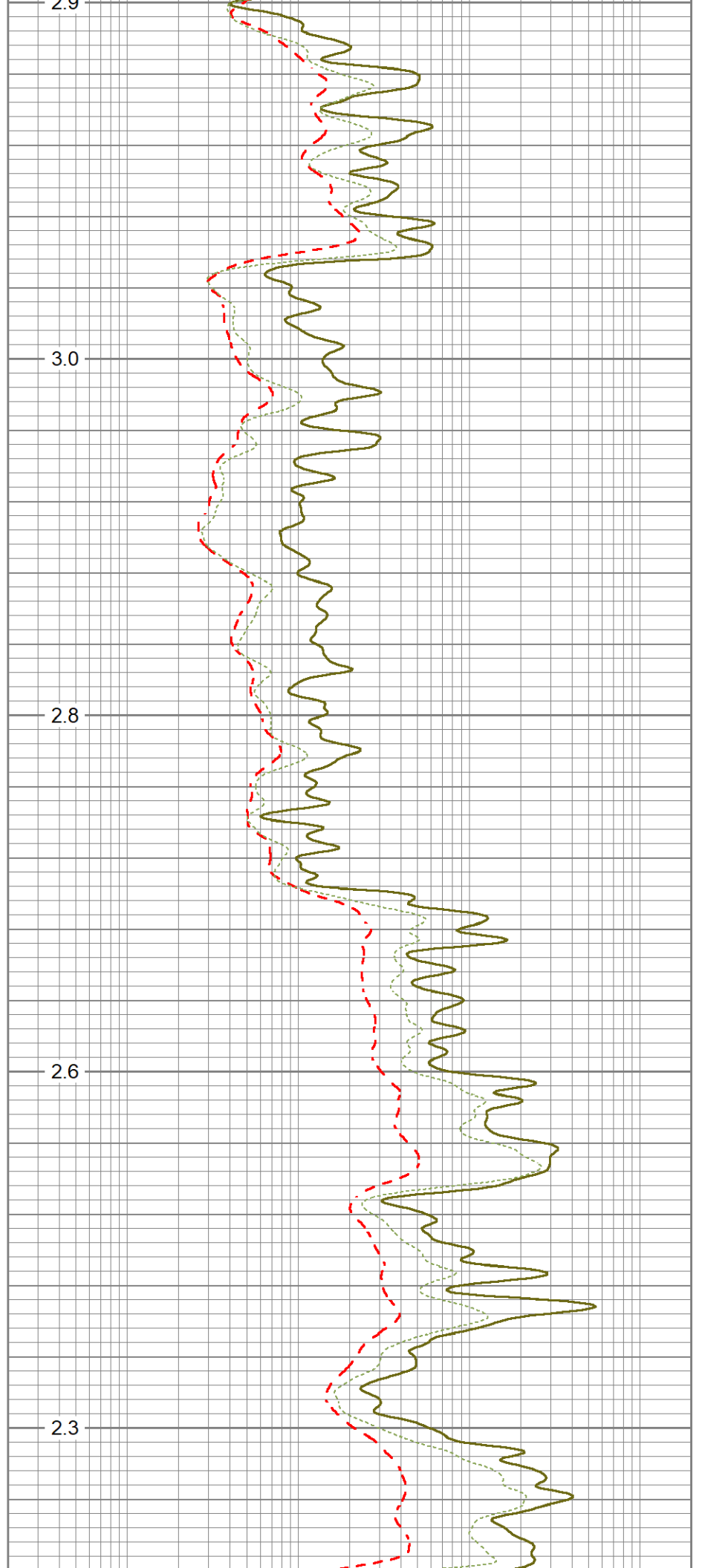
2.9

3.0

2.8

2.6

2.3



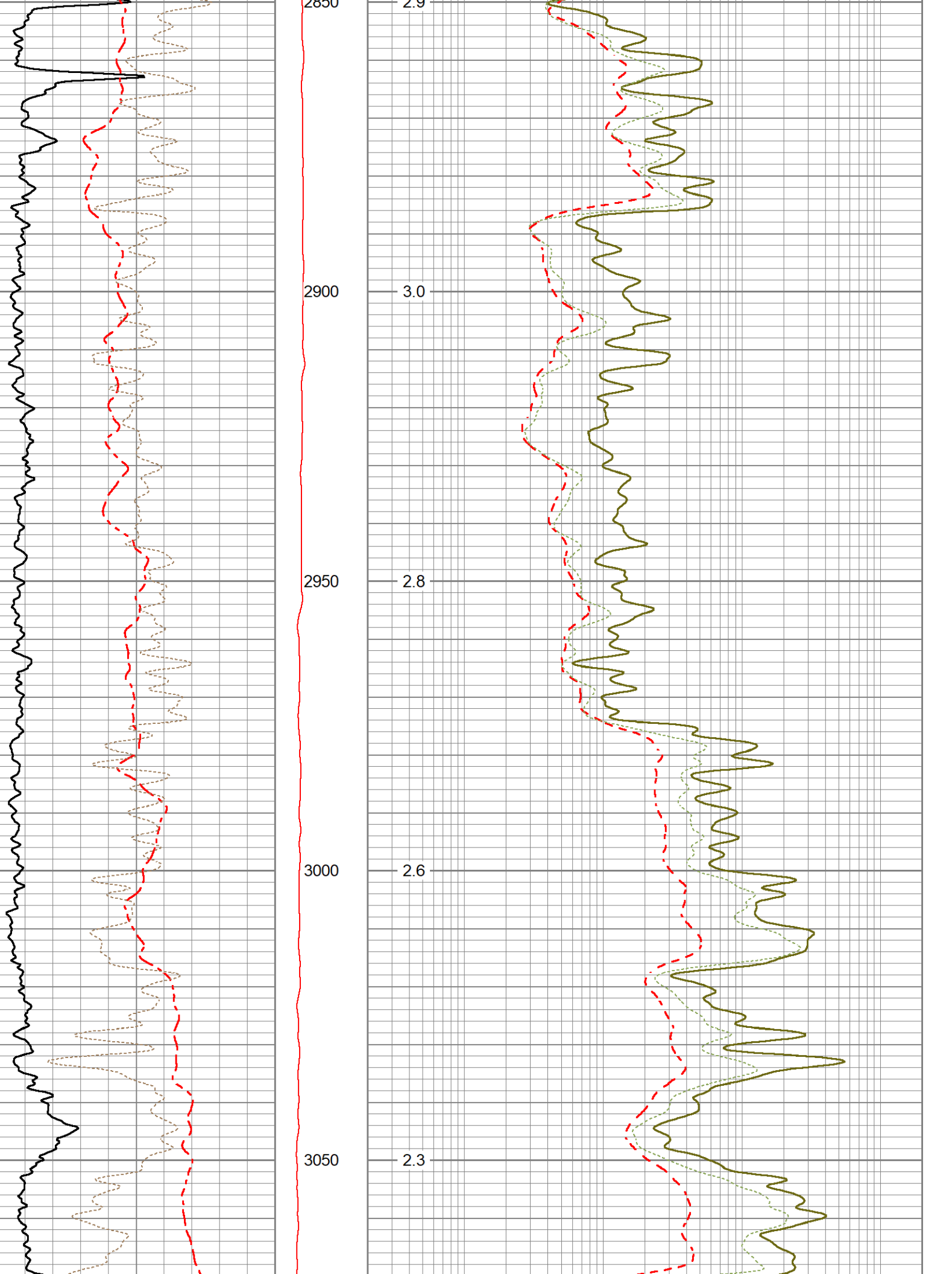
2.9

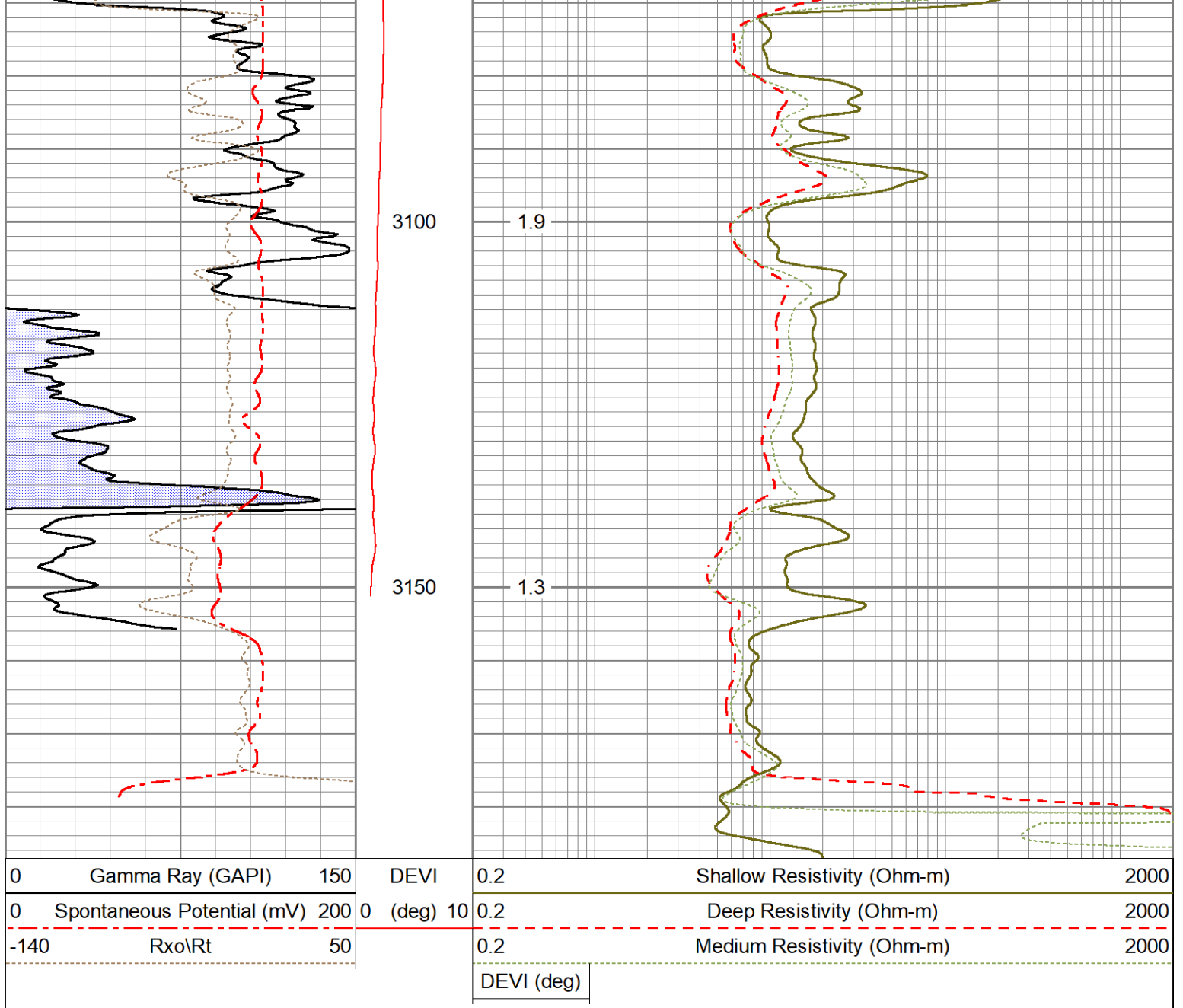
3.0

2.8

2.6

2.3





Calibration Report

Database File ow1-9122 john brickley.db
 Dataset Pathname pass4.4
 Dataset Creation Sat Apr 29 21:55:44 2023

Dual Induction Calibration Report

Serial-Model: 080402_ (PINK TOOL)-G
 Surface Cal Performed: Thu Aug 11 08:13:50 2022
 Downhole Cal Performed: Tue Nov 17 10:50:14 2020
 After Survey Verification Performed: Tue Nov 17 10:50:14 2020

Surface Calibration

Loop:	Readings			References			Results	
	Air	Loop	V	Air	Loop	mmho/m	m	b
Deep	0.007	0.642	V	10.000	380.000	mmho/m	582.797	5.966
Medium	0.010	0.728	V	-12.000	420.000	mmho/m	601.054	-17.822
Internal:	Zero	Cal		Zero	Cal		m	b
Deep	0.007	0.642	V	0.000	350.000	mmho/m	550.717	-3.768
Medium	0.010	0.728	V	0.000	350.000	mmho/m	550.717	-3.768

Downhole Calibration								
	Readings			References			Results	
	Zero	Cal		Zero	Cal		m'	b'
Deep	-2.869	354.028	mmho/m	-0.044	350.323	mmho/m	0.982	2.773
Medium	-3.741	414.629	mmho/m	-0.037	400.340	mmho/m	0.957	3.543
LL3		9.500	V		2500.000	Ohm-m		
		0.000	V		20.000	Ohm-m		
		-9.500	V		5000.000	mmho-m		

After Survey Verification								
	Readings			Targets			Results	
	Zero	Cal		Zero	Cal		m'	b'
Deep	0.000	0.000	mmho/m	-2.869	354.028	mmho/m	1.000	0.000
Medium	0.000	0.000	mmho/m	-3.741	414.629	mmho/m	1.000	0.000
LL3		0.000	Ohm-m		2.000	Ohm-m		
		0.000	Ohm-m		500.000	Ohm-m		
		0.000	mmho-m		1.000	mmho-m		

Microlog Calibration Report

Serial-Model: Performed:	070527-Osage Fri Dec 30 13:02:23 2022
-----------------------------	--

	Readings			References			Results	
	Zero	Cal		Zero	Cal		m	b
Normal	-0.0028	0.0887	V	0.0000	10.0000	Ohm-m	109.2780	0.3082
Inverse	-0.0060	0.1128	V	0.0000	10.0000	Ohm-m	84.1776	0.5012
Caliper	1.7618	4.3262	V	4.8000	11.2500	in	2.5153	0.3685

Inclinometer Calibration Report

Performed:	Thu Oct 8 13:57:38 2020					
	Low Read.	High Read.		Low Ref.	High Ref.	
X Accelerometer	205.00	1843.00		-1.00	1.00	gee
Y Accelerometer	205.00	1843.00		-1.00	1.00	gee
Z Accelerometer						gee

Gamma Ray Calibration Report

Serial Number:	Refurb01	
Tool Model:	OSAGE_01	
Performed:	Mon Jan 18 09:02:16 2021	
Calibrator Value:	150.0	GAPI
Background Reading:	125.0	cps
Calibrator Reading:	875.0	cps
Sensitivity:	0.2000	GAPI/cps

Sensor	Offset (ft)	Schematic	Description	Length (ft)	O.D. (in)	Weight (lb)
--------	-------------	-----------	-------------	-------------	-----------	-------------

ACCY	31.04		ADMYR_TELEMETRY-OSAGE_01 (Refurb01) Admyr Telemetry With Gr, Deviation, ADC board and Pulses Board in it.	3.69	3.25	53.00
ACCX	31.04					
GR	29.86					
FRAMES	28.54					
SSTAT	28.54					
PSTAT	28.54					
ASTAT	28.54					
MI	23.00		MICRO_DIG-Osage (070527) Digital Microlog	7.21	5.13	137.00
MN	23.00					
MCAL	22.00					
ASTAT2	21.33					
SP	10.92		DIL-G (080402_ (PINK TOOL)) Gearhart	21.33	4.00	290.00
CILD	10.92					
CILM	7.00					
RLL3	1.65					
TR_Mon	0.00					

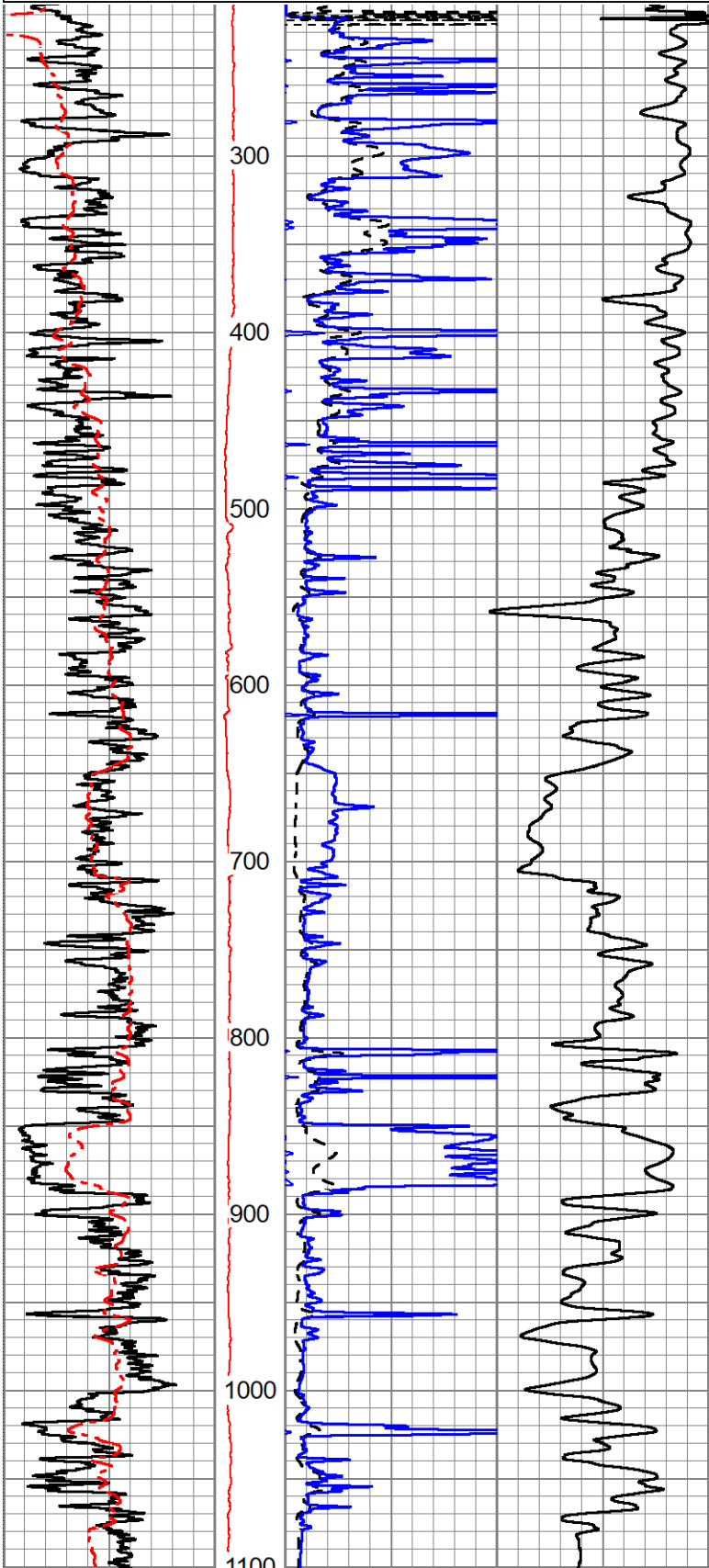
Dataset: ow1-9122 john brickley.db: field/well/run1/pass4.5
 Total length: 32.23 ft
 Total weight: 480.00 lb
 O.D.: 5.13 in

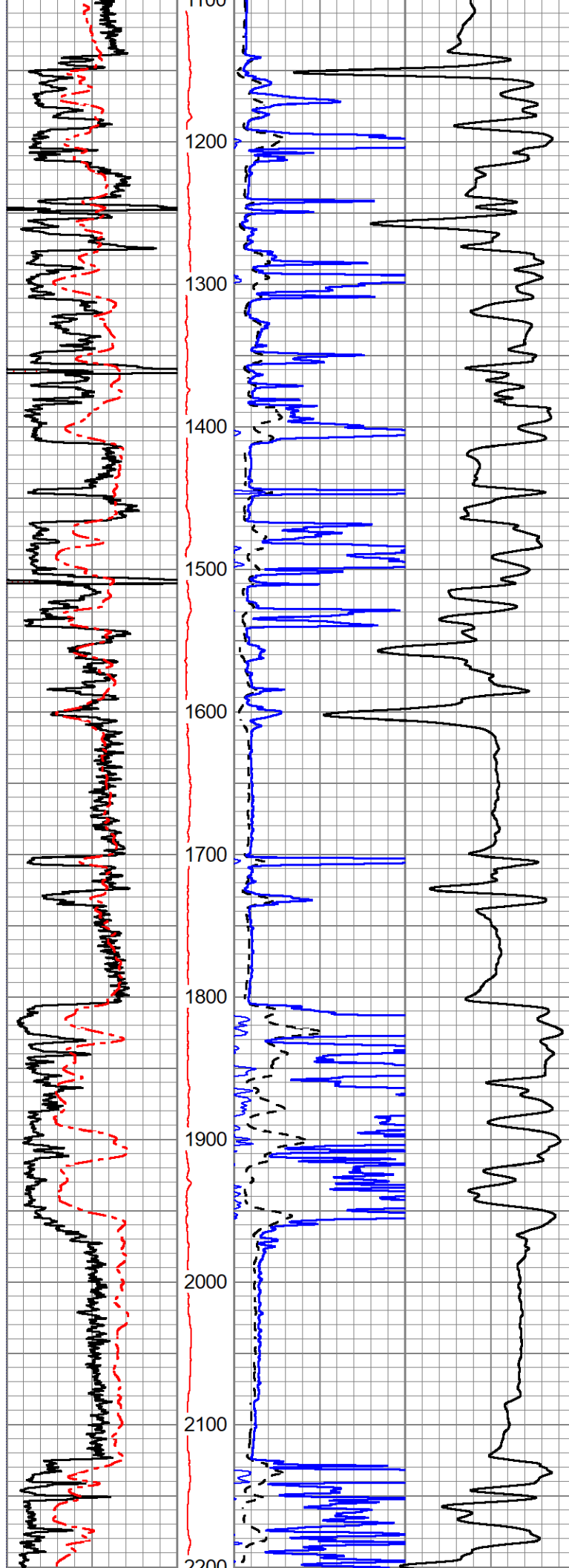


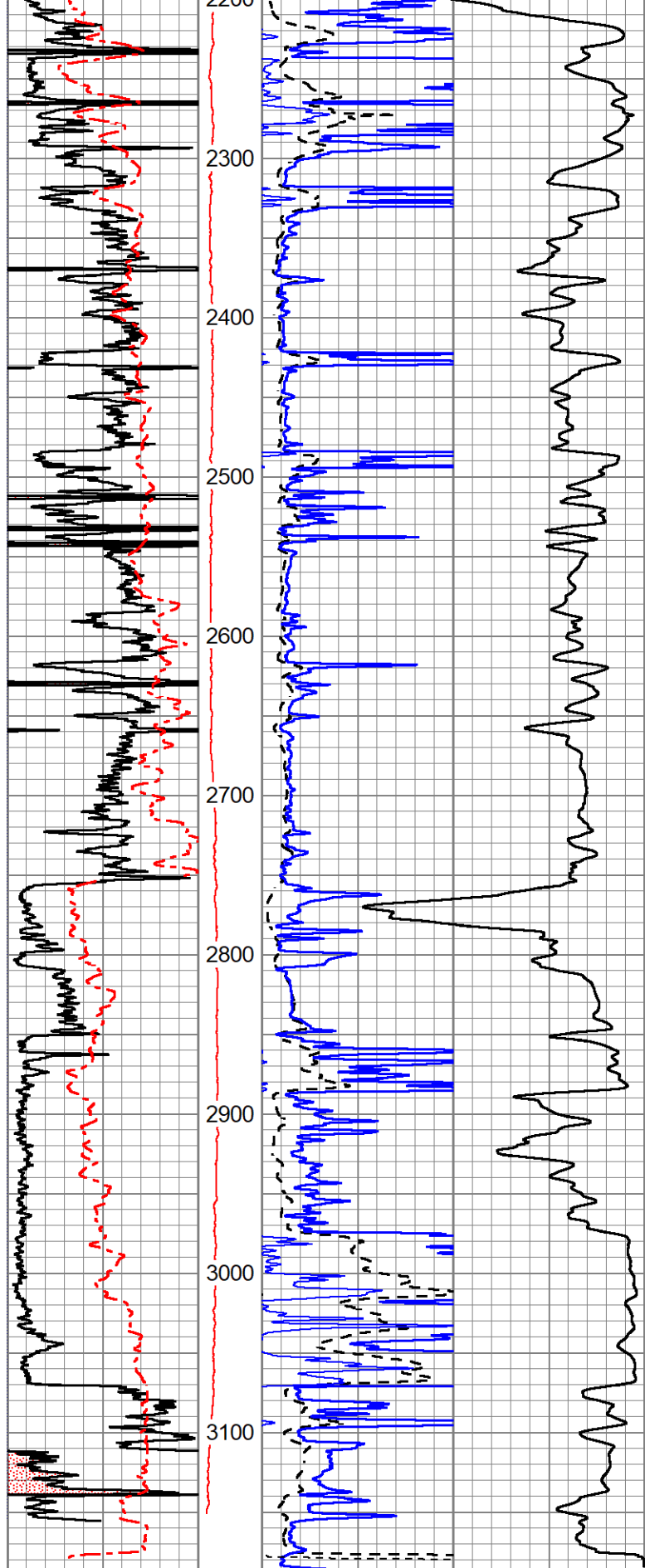
1" INDUCTION LOG

Database File ow 1-9 122 John brickley.db
 Dataset Pathname pass4.6
 Presentation Format st_dil_1inch
 Dataset Creation Sat Apr 29 21:57:15 2023
 Charted by Depth in Feet scaled 1:1200

0 GR (GAPI) 150	DEVI	1000	CILD (mmho/m)	0
0 SP (mV) 200	(deg)	RILD		
	0 10	0 (Ohm-m)	50	
		RLL3		
		0 (Ohm-m)	50	







0	GR (GAPI)150	DEVI	1000	CILD (mmho/m)	0
0	SP (mV) 200	(deg)		RILD	
		0 10	0	(Ohm-m) 50	
				RLL3	
			0	(Ohm-m) 50	



1" INDUCTION LOG