



COMPOSITE LOG

Company JOHN BRICKLEY DBA B8 INVESTMENTS
 Well SEGLEM # 6
 Field REYNOLDS-SCHAFFER
 County BUTLER
 State KANSAS

Company JOHN BRICKLEY DBA B8 INVESTMENTS
 Well SEGLEM # 6
 Field REYNOLDS-SCHAFFER
 County BUTLER State KANSAS

Location: API #: 15-015-24197-00-00
 E/2 NE NW NW
 330' FNL & 1060' FWL
 SEC 16 TWP 27S RGE 6E
 Permanent Datum GL Elevation 1400
 Log Measured From KB 12
 Drilling Measured From KB
 Other Services
 DIL, MEL
 CD/LN
 Elevation
 K.B. 1412
 D.F. 1411
 G.L. 1400

Date	4-29-2023
Run Number	ONE
Depth Driller	3190
Depth Logger	3187
Bottom Logged Interval	3185
Top Log Interval	210
Casing Driller	8.625" @ 210
Casing Logger	8.625" @ 222 GL
Bit Size	7.875"
Type Fluid in Hole	MUD
Density / Viscosity	9.2 / 42
pH / Fluid Loss	10 / 9.6
Source of Sample	PIT
Rm @ Meas. Temp	2.1 @ 70
Rmf @ Meas. Temp	1.68 @ 70
Rmc @ Meas. Temp	2.52 @ 70
Source of Rmf / Rmc	CALC
Rm @ BHT	1.26 @ 109
Time Circulation Stopped	1:00 PM
Time Logger on Bottom	9:00 PM
Maximum Recorded Temperature	109
Equipment Number	OW1
Location	HOMINY, OK
Recorded By	SHELDON TYLER
Witnessed By	MR. BRICKLEY

<<< Fold Here >>>

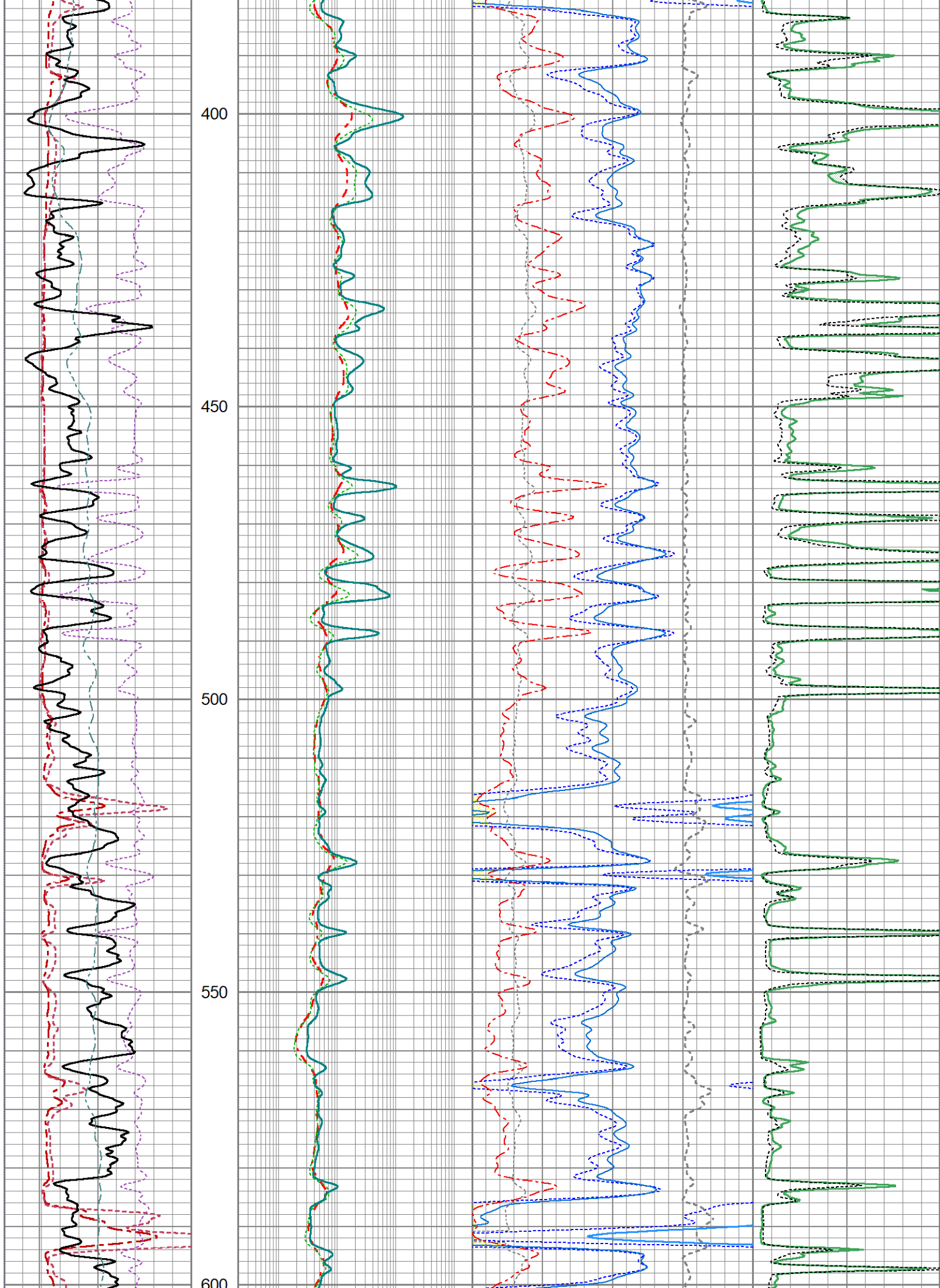
All interpretations are opinions based on inferences from electrical or other measurements and we cannot and do not guarantee the accuracy or correctness of any interpretation, and we shall not, except in the case of gross or willful negligence on our part, be liable or responsible for any loss, costs, damages, or expenses incurred or sustained by anyone resulting from any interpretation made by any of our officers, agents or employees. These interpretations are also subject to our general terms and conditions set out in our current Price Schedule.

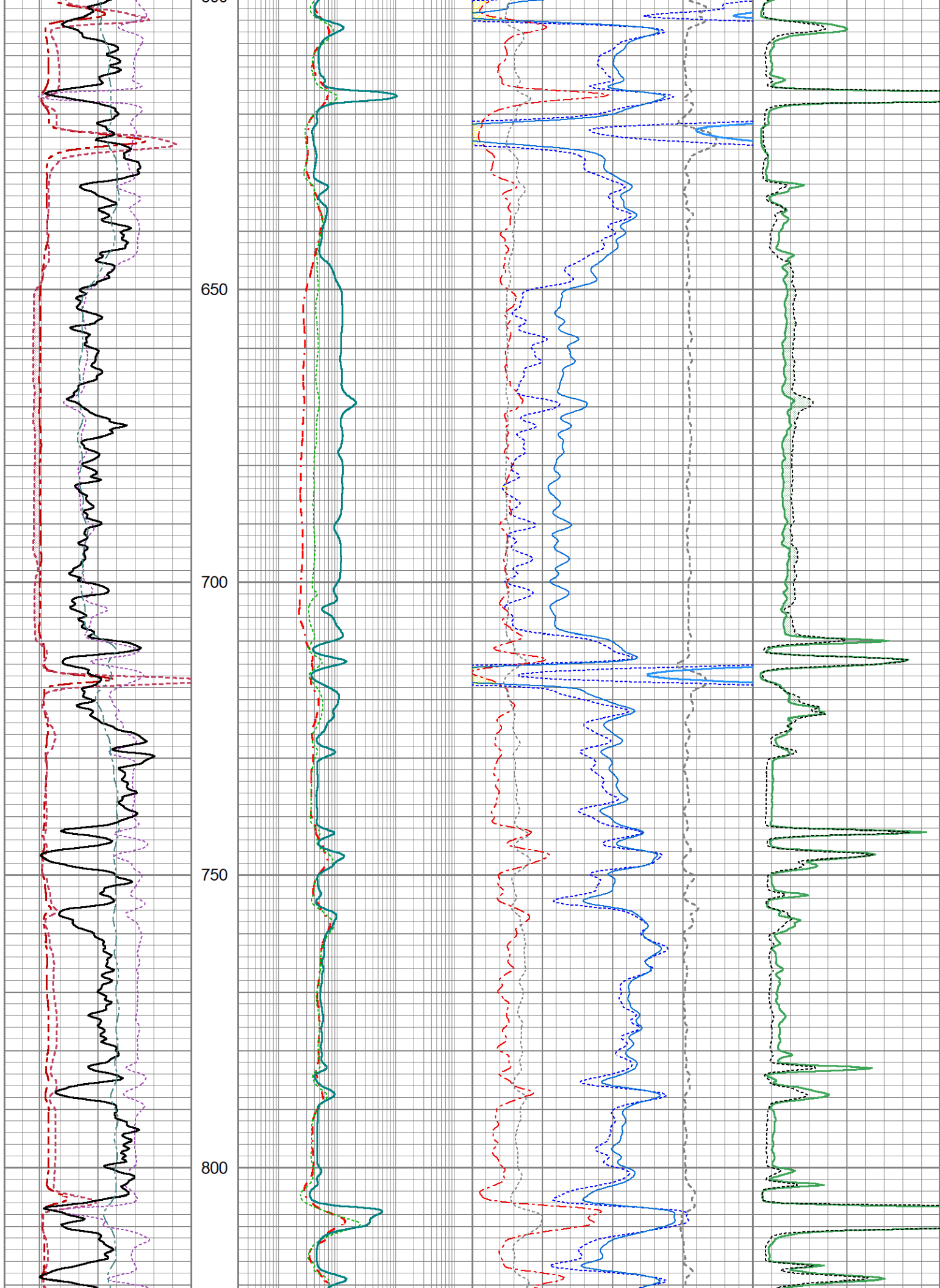
Comments

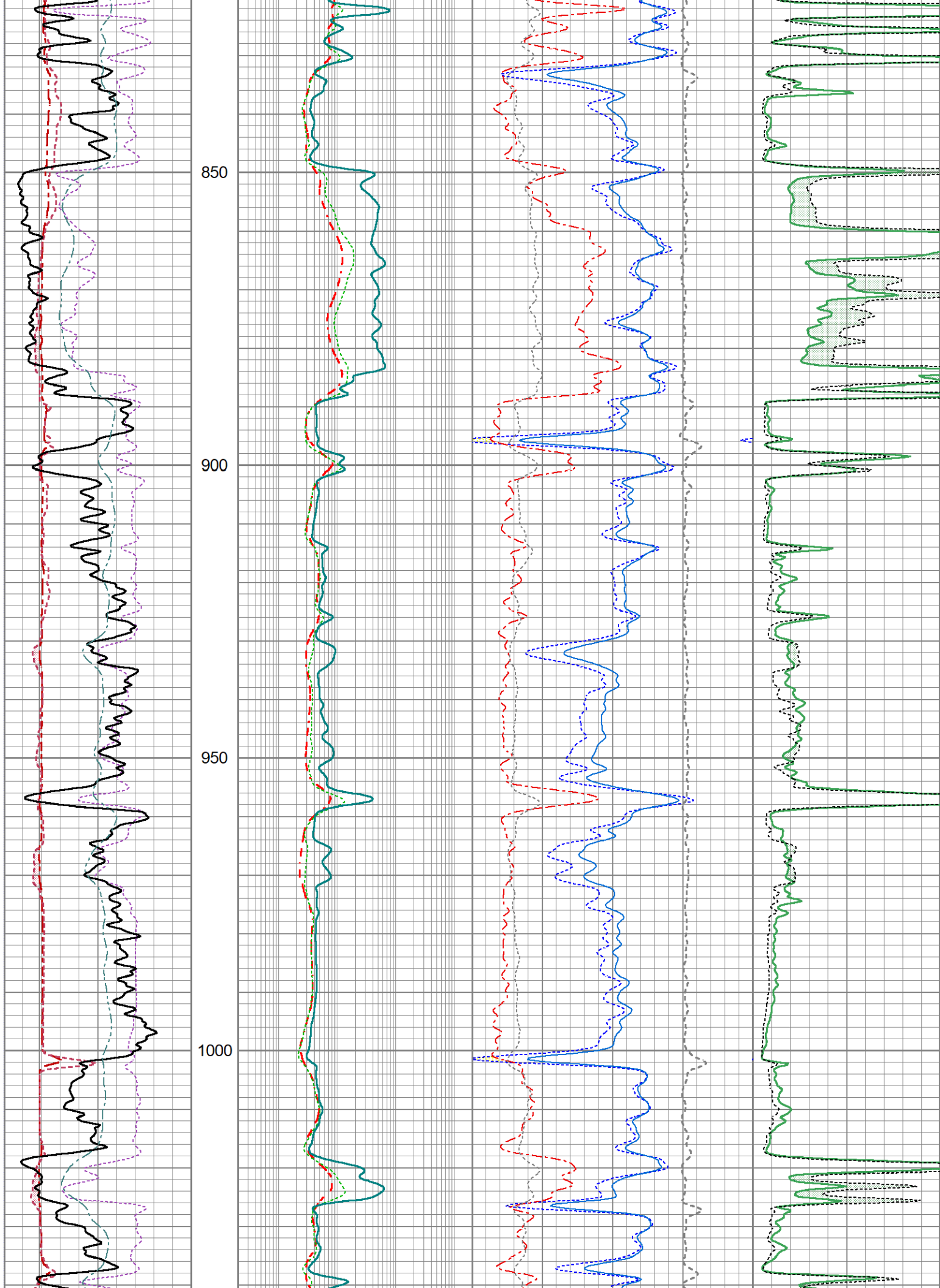
FILE # OW1-9122 JOHN BRICKLEY
 KIDD, LUKE
 THANK YOU FOR USING OSAGE WIRELINE

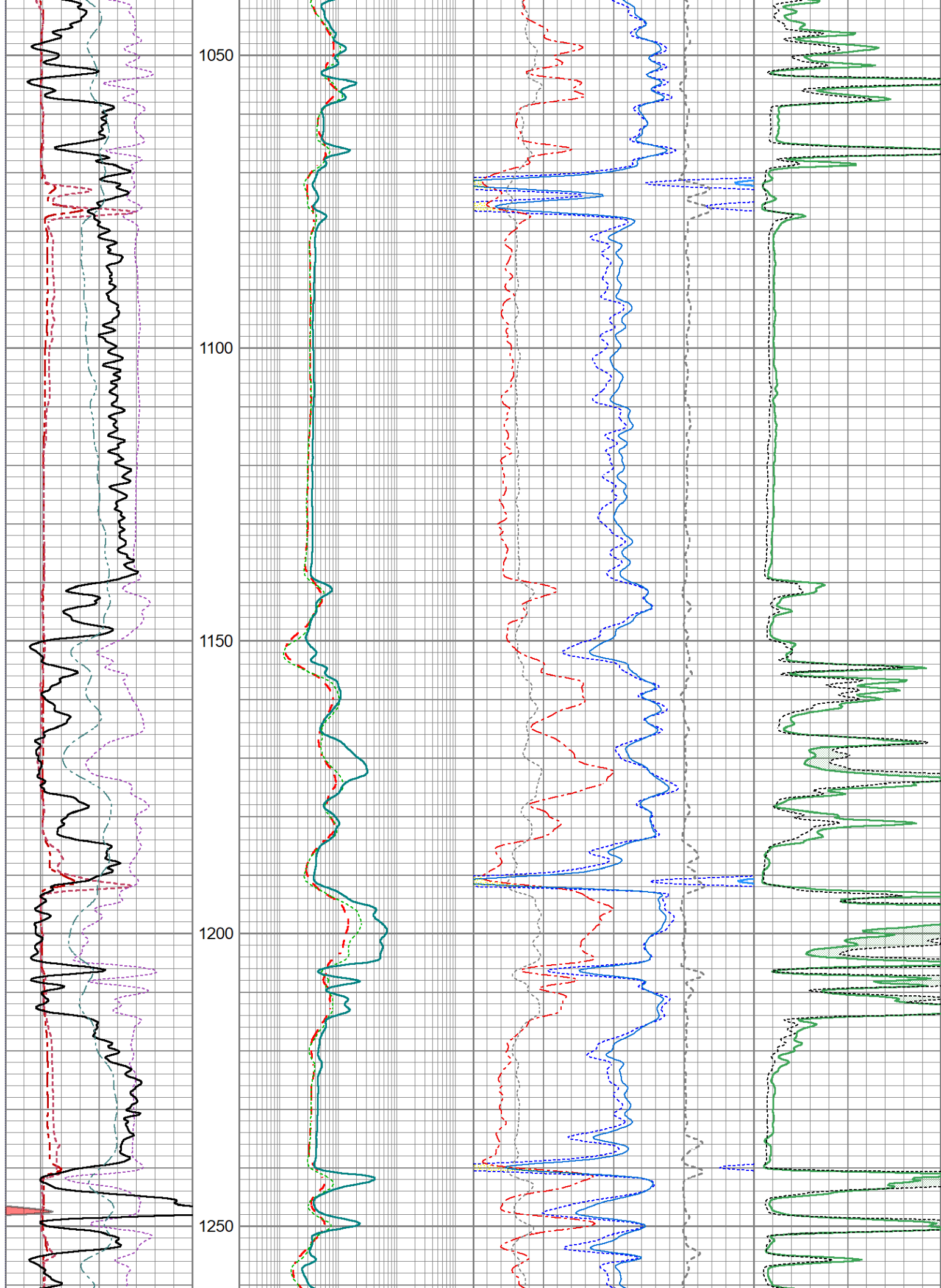


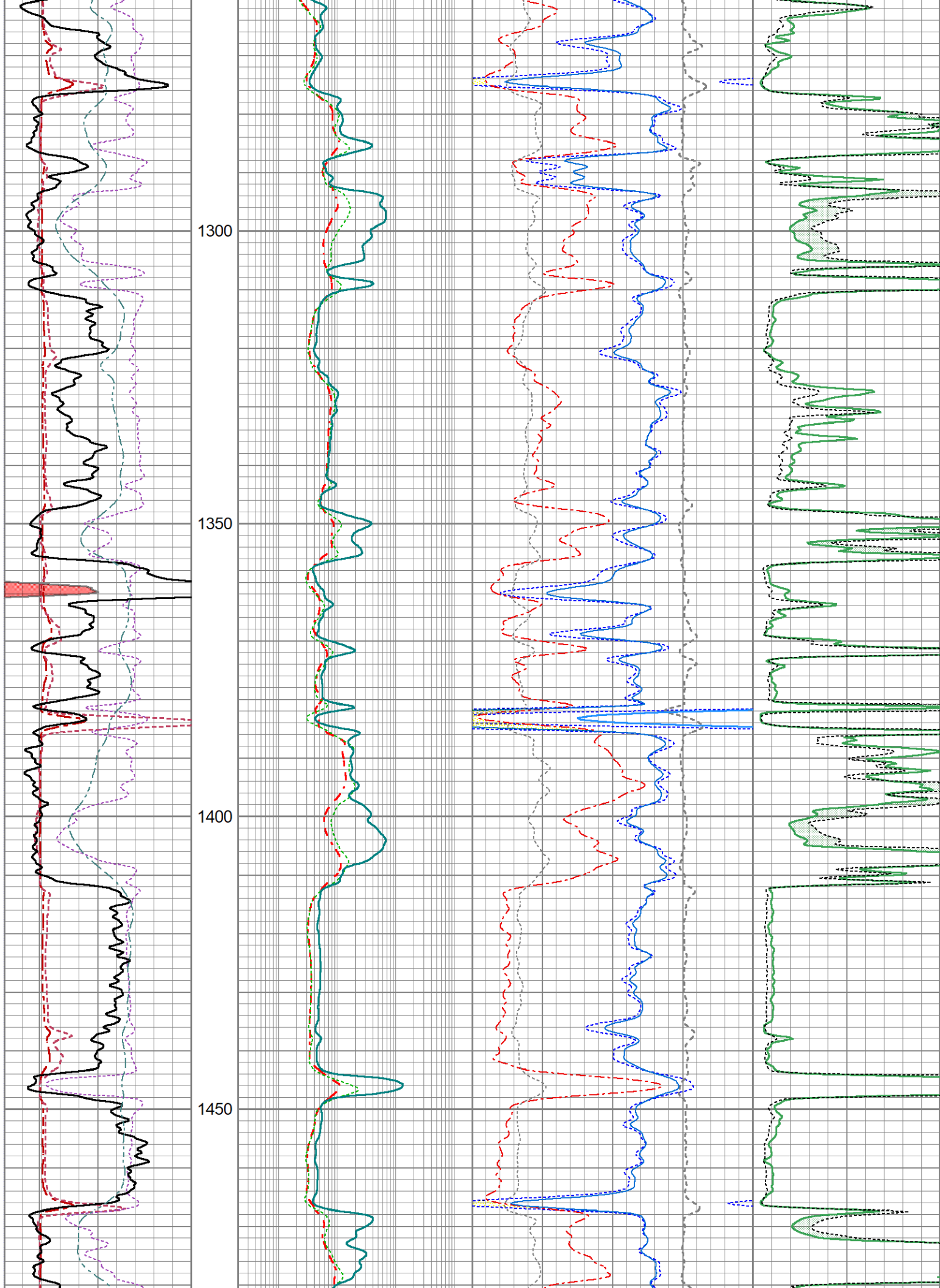
5" COMPOSITE LOG

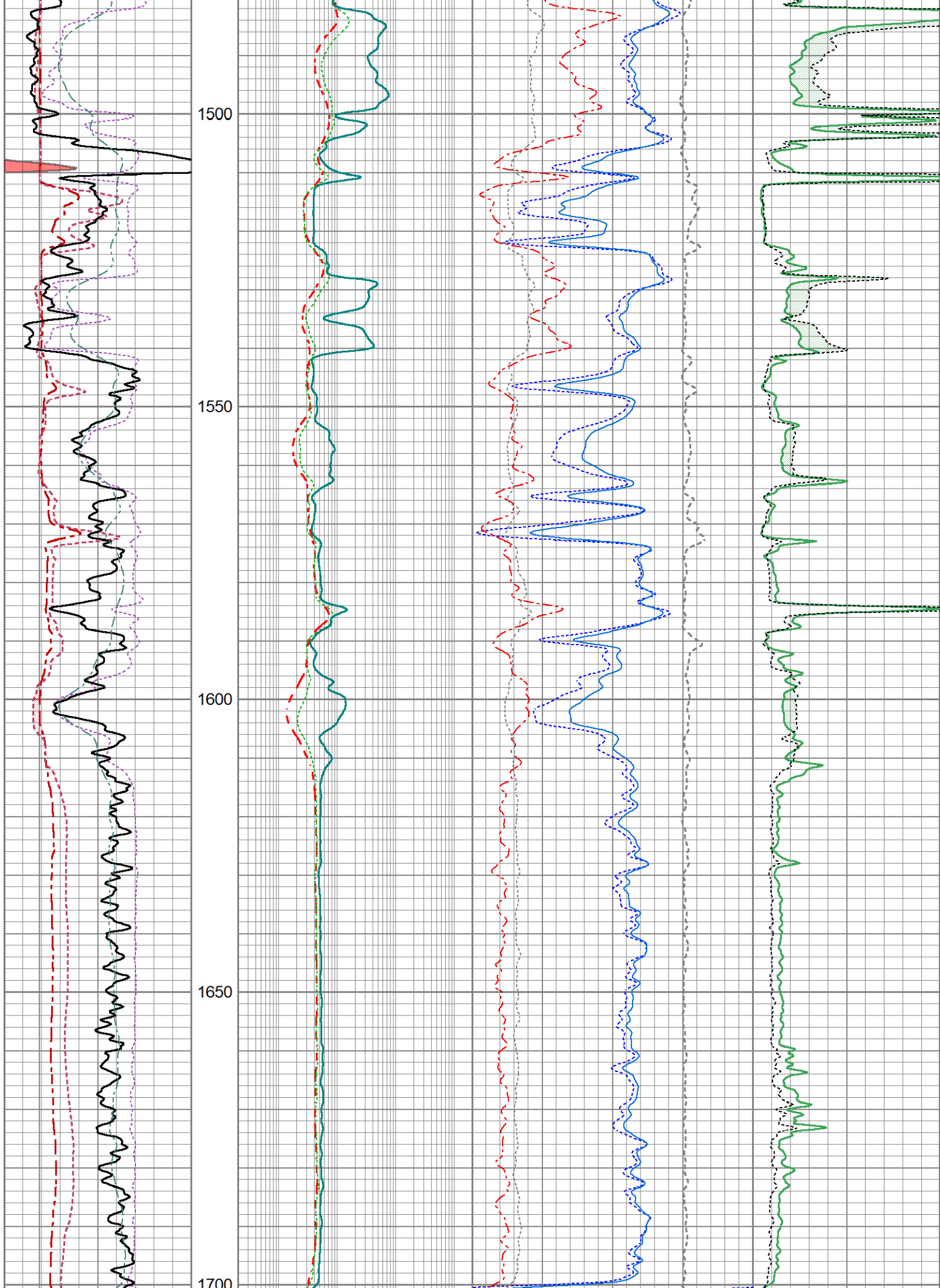


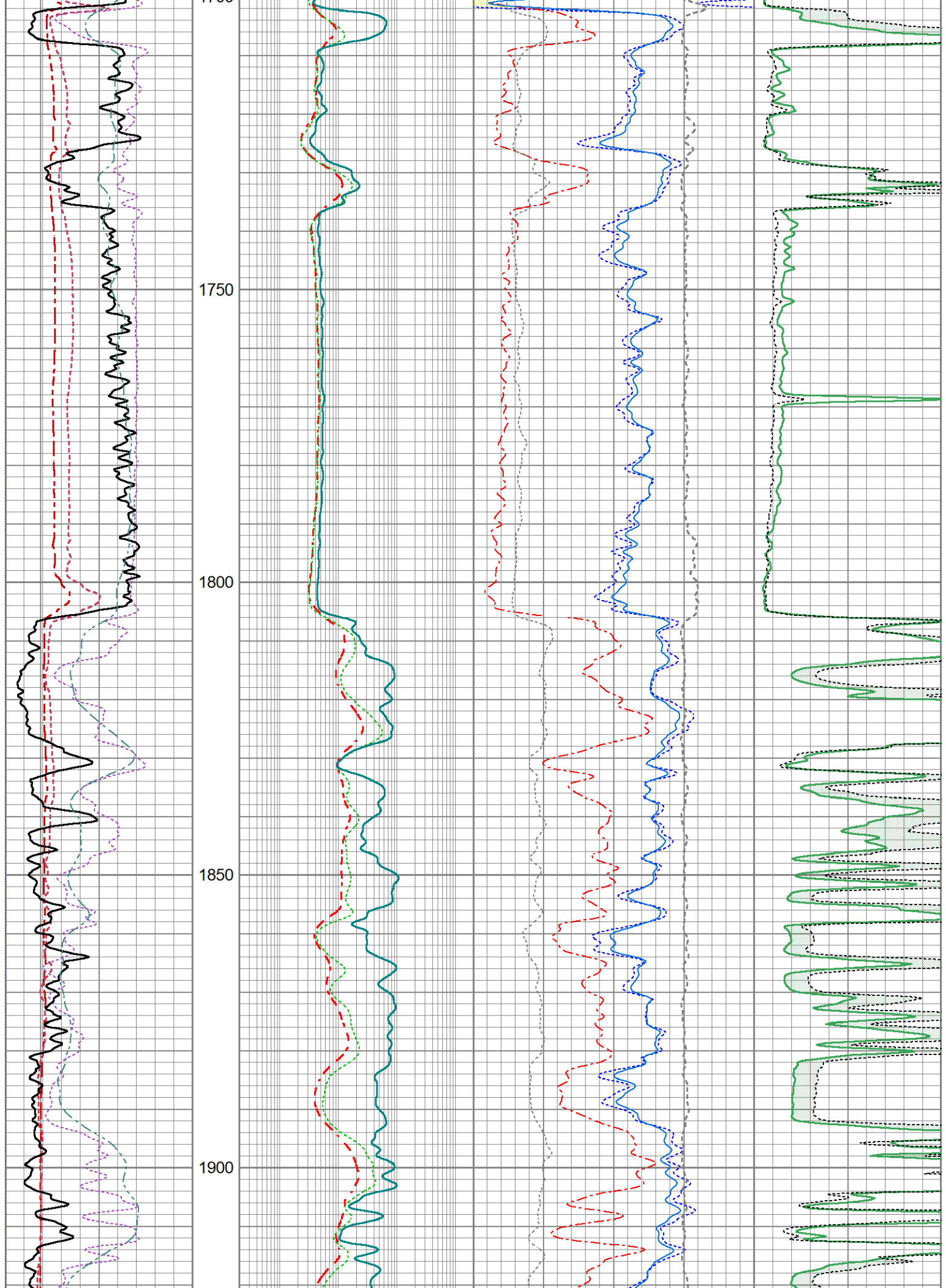


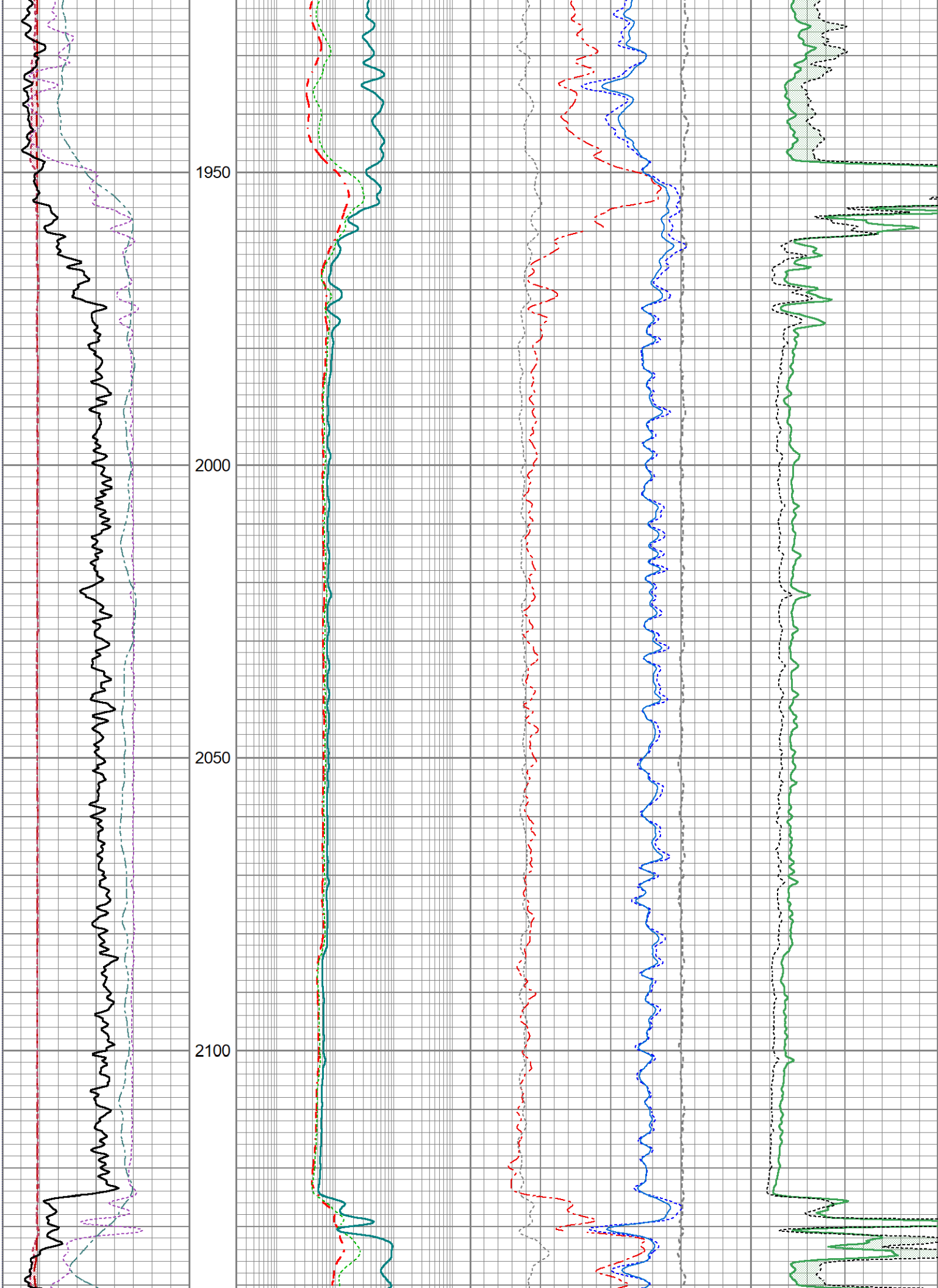












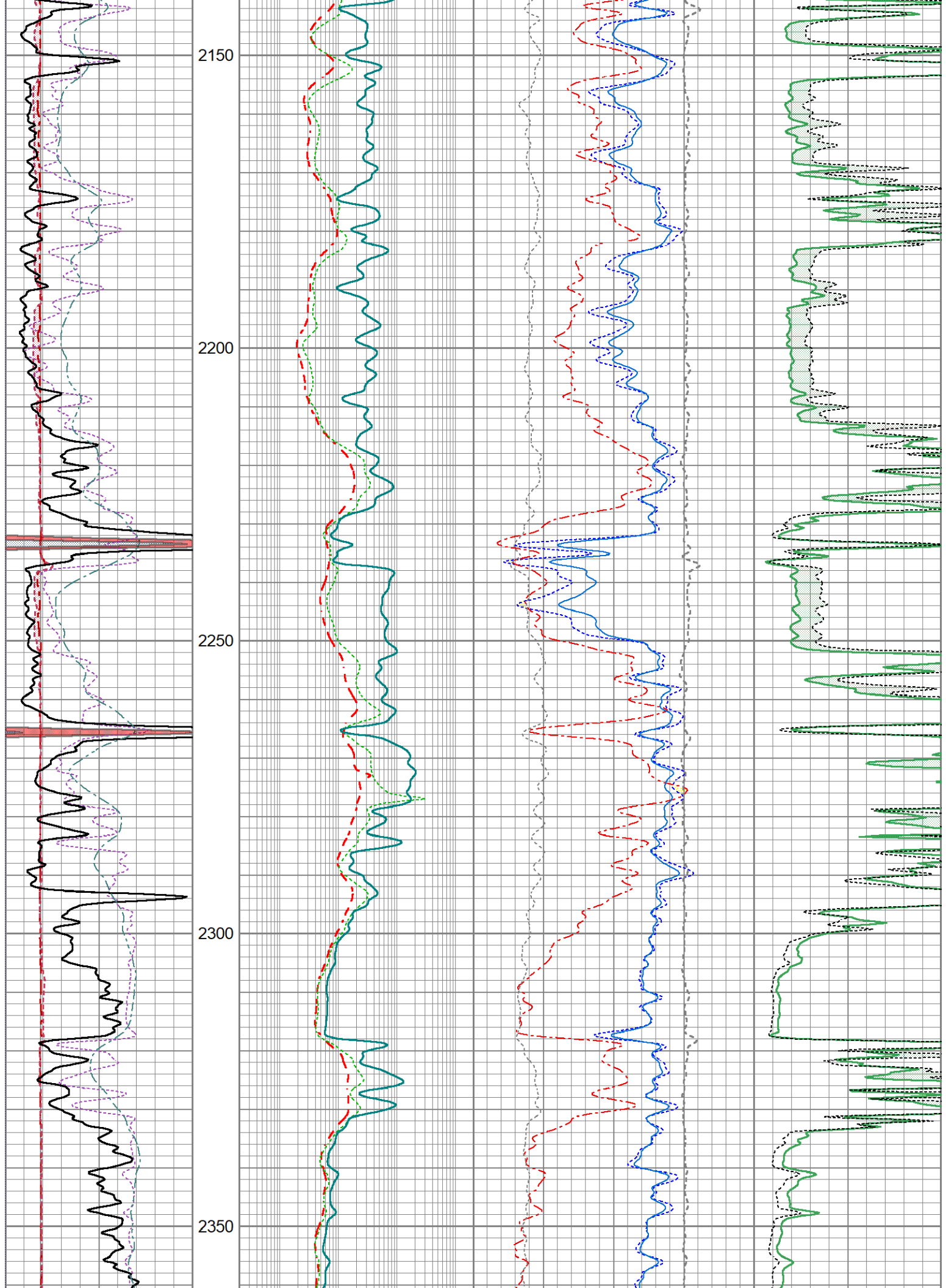
2150

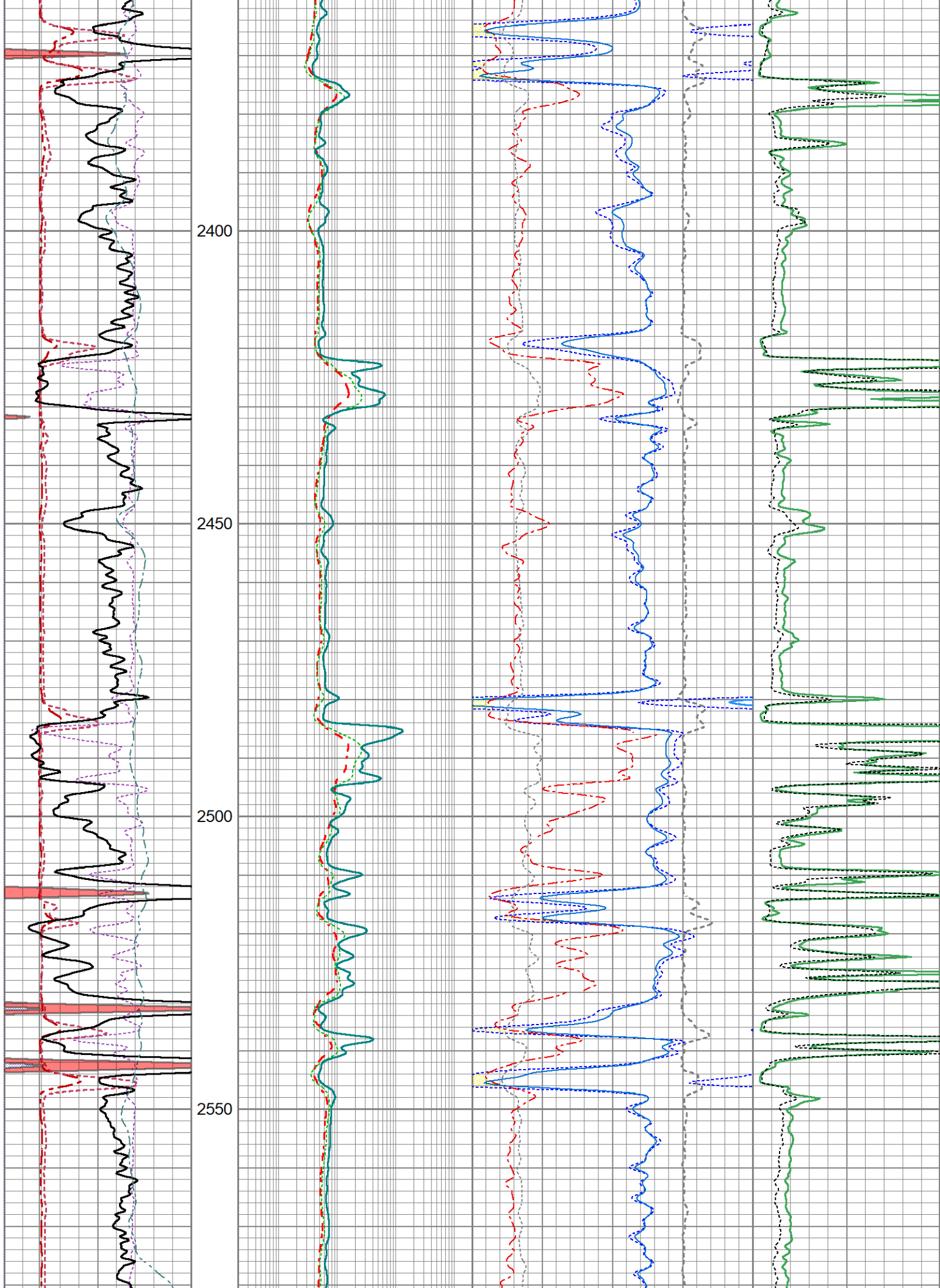
2200

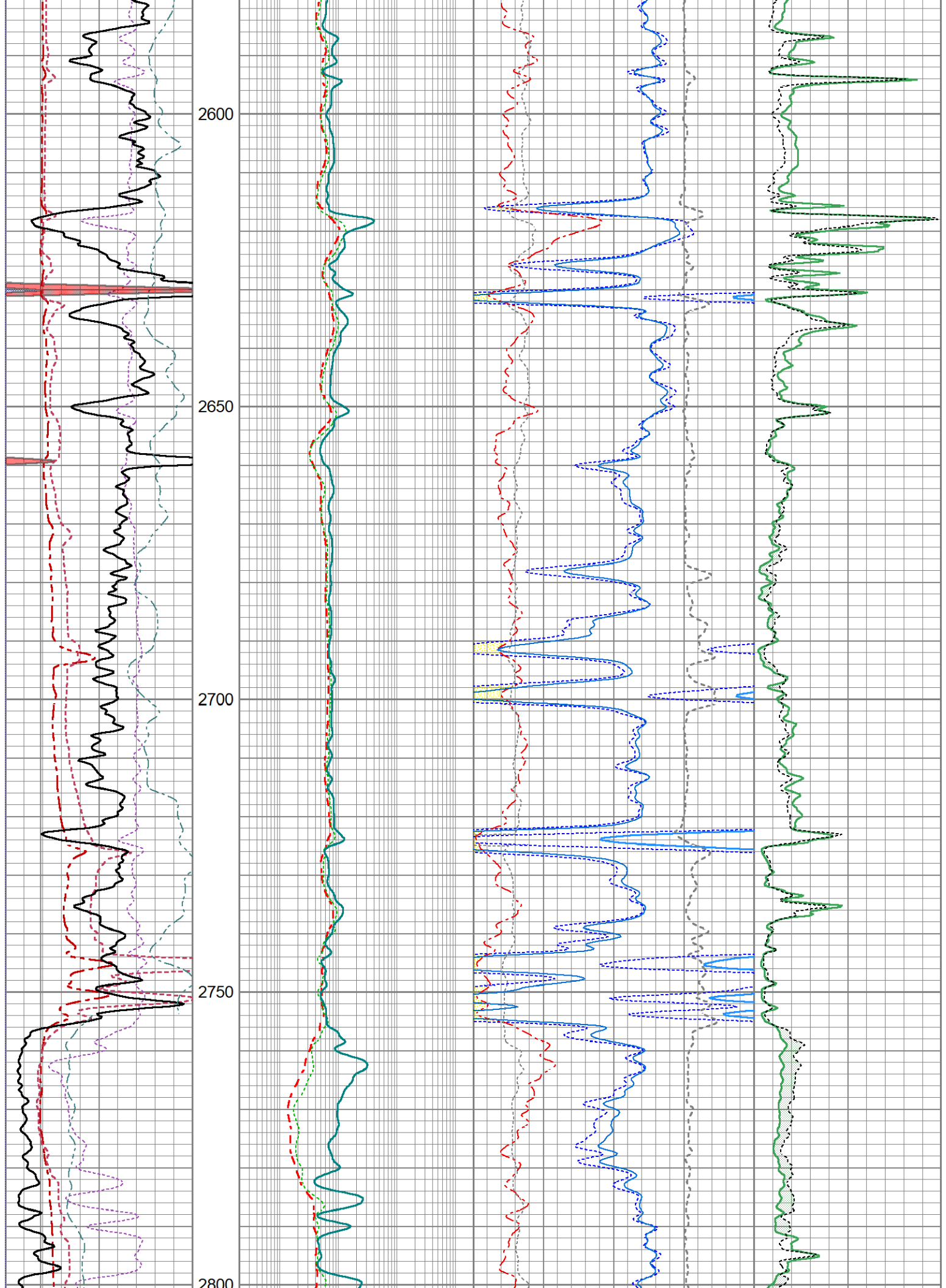
2250

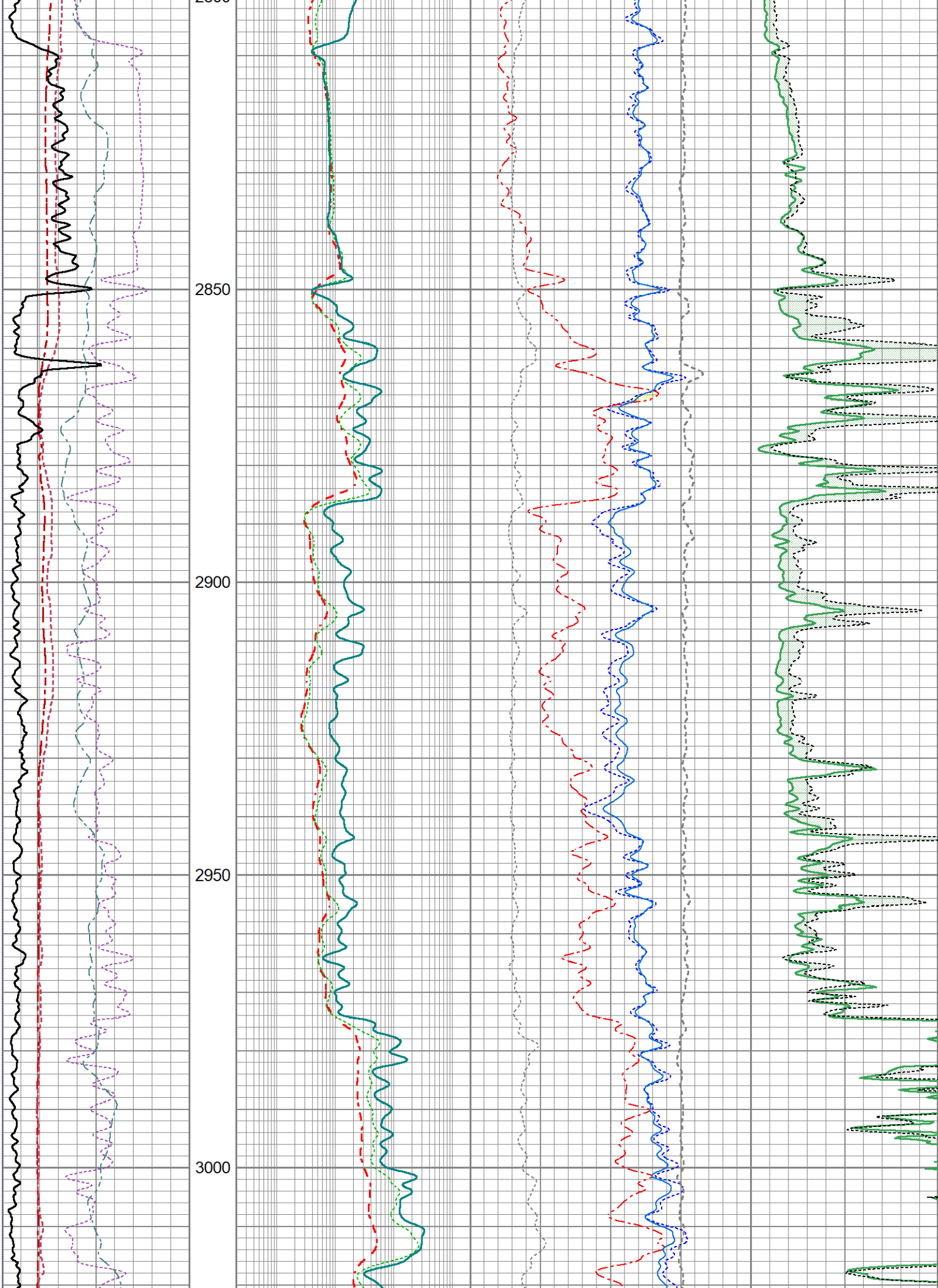
2300

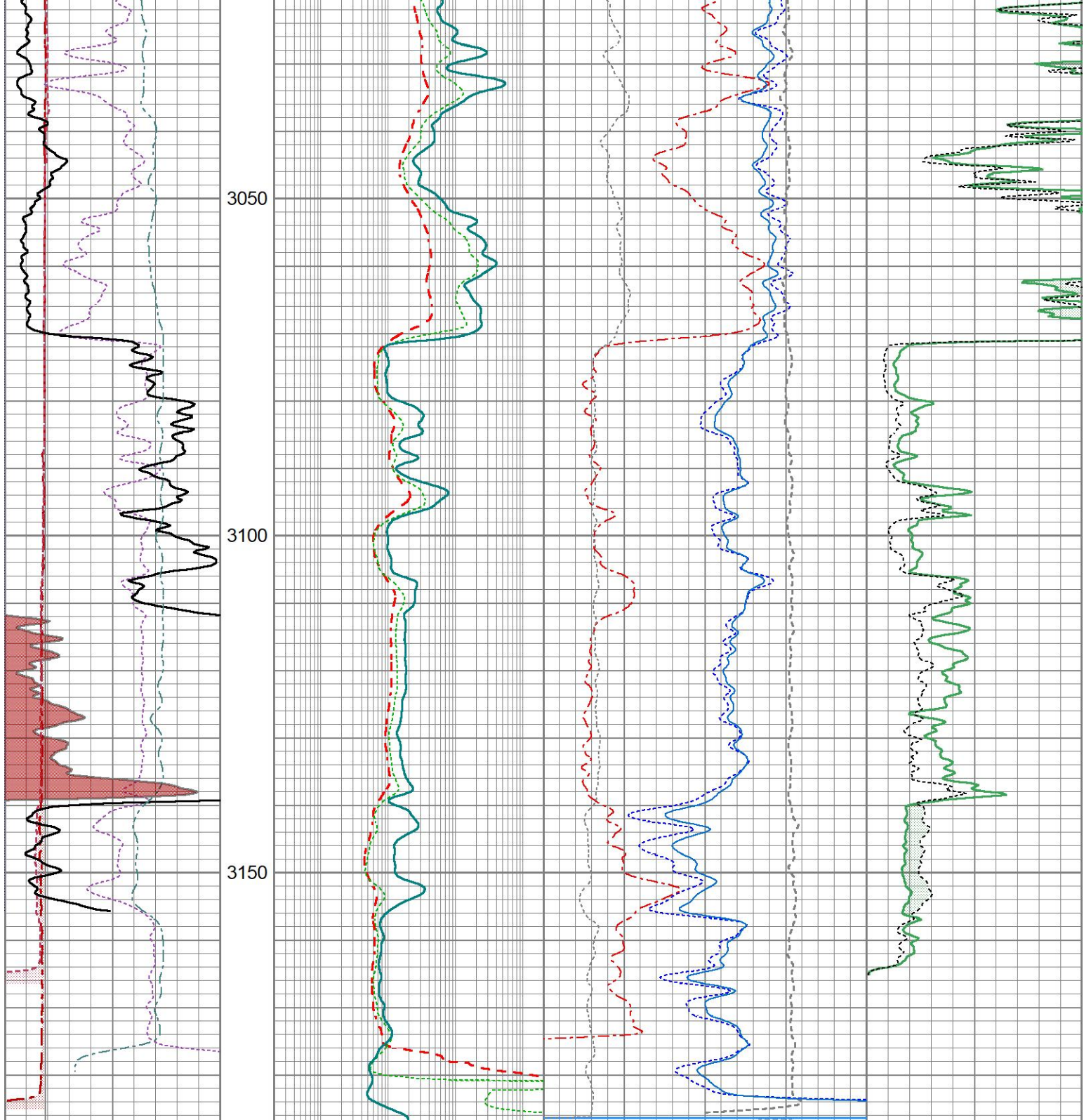
2350











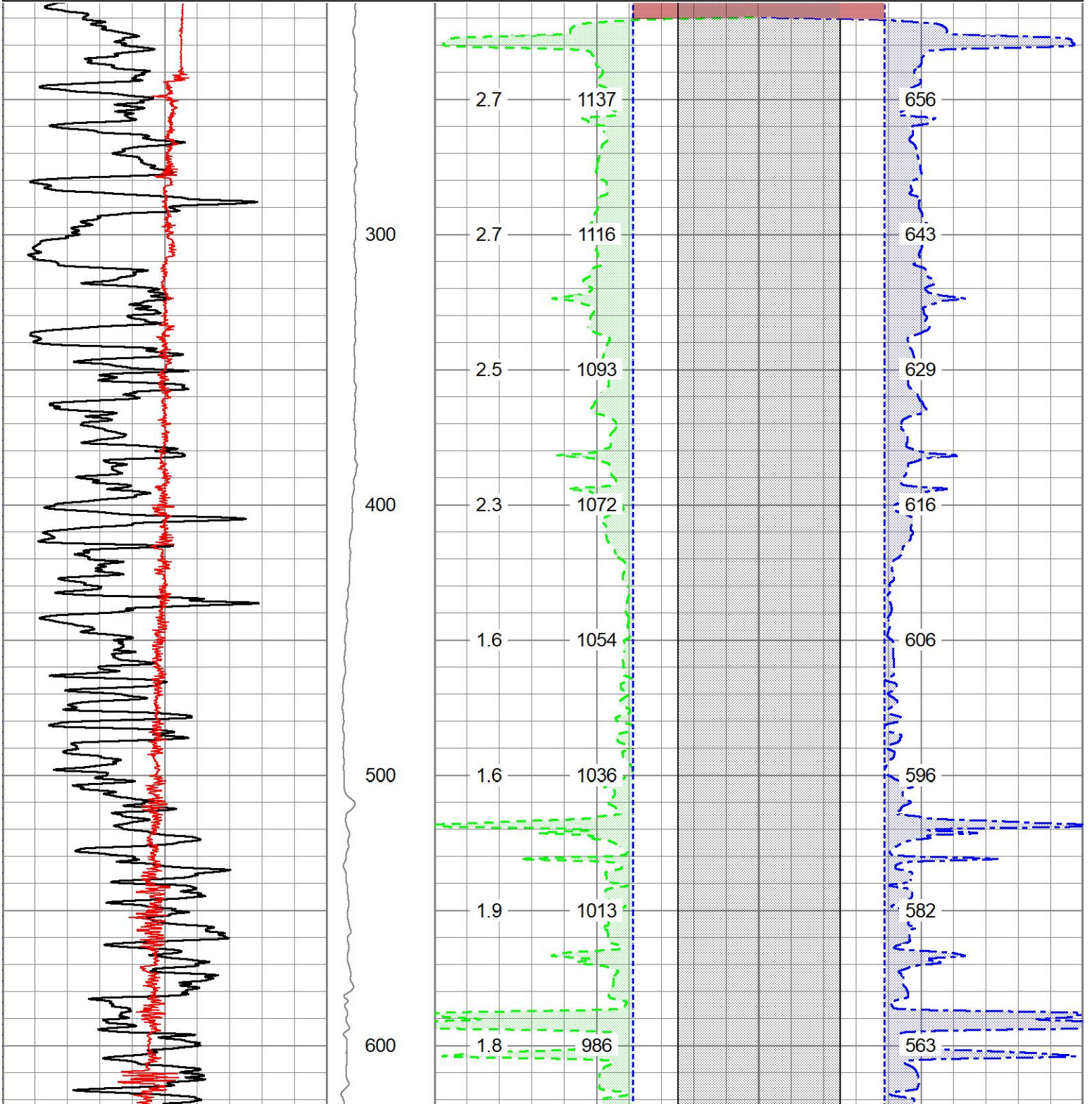
6	Bit Size (in)	16	30	Density Porosity (pu)	-10	Micro Inverse
6	Density Caliper (in)	16	0.2	(Ohm-m)	2000	(Ohm-m)
6	Micro Caliper (in)	16	30	Neutron Porosity (pu)	-10	0
-140	Rxo/Rt	50	2	Bulk Density (g/cc)	3	Micro Normal
Gamma Ray			0	PE (barn)	20	0
0	(GAPI)	150	Correction			
0	SP (mV)	200	0.2	(Ohm-m)	2000	-0.5 (g/cc) 0.5

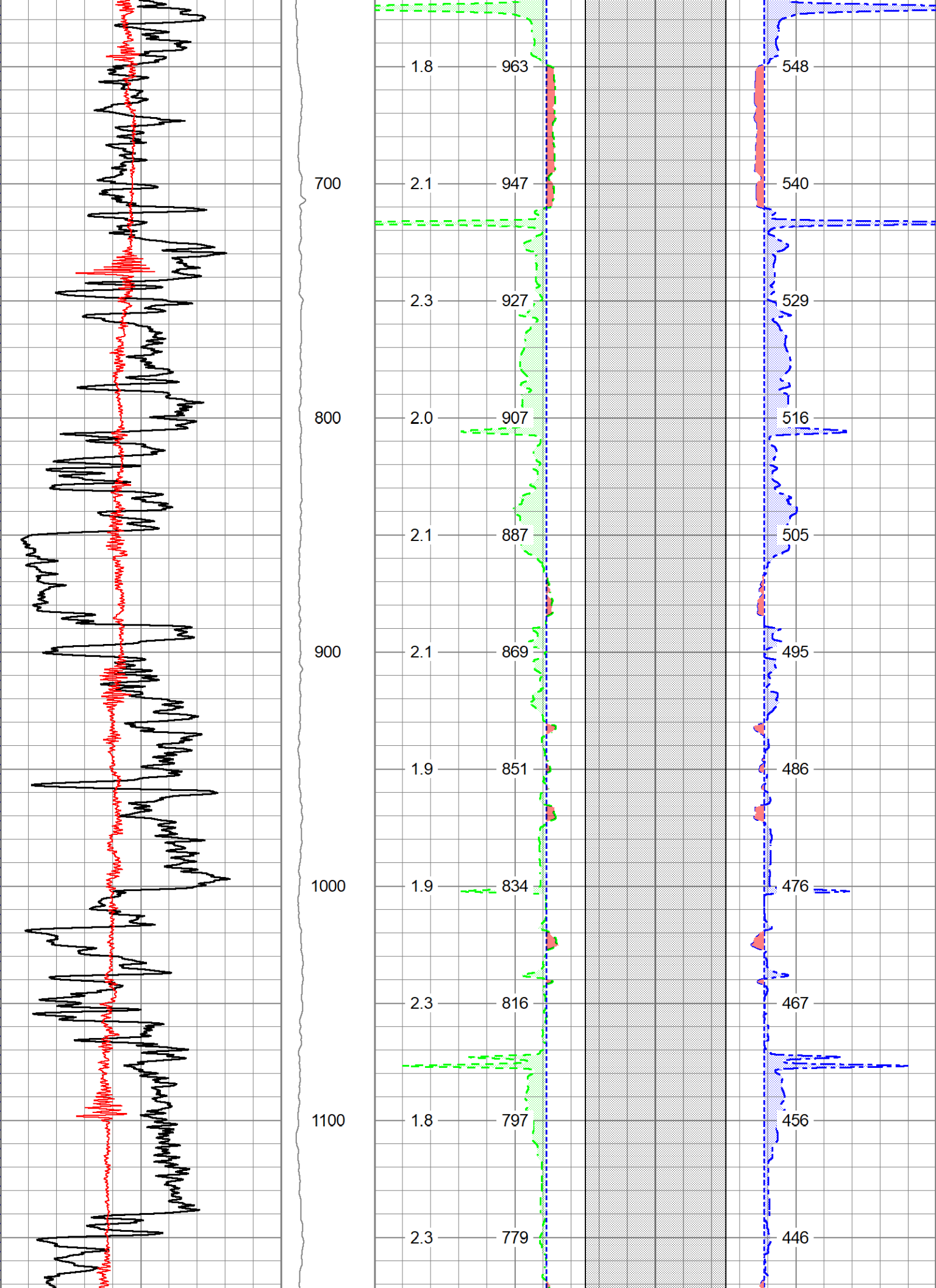


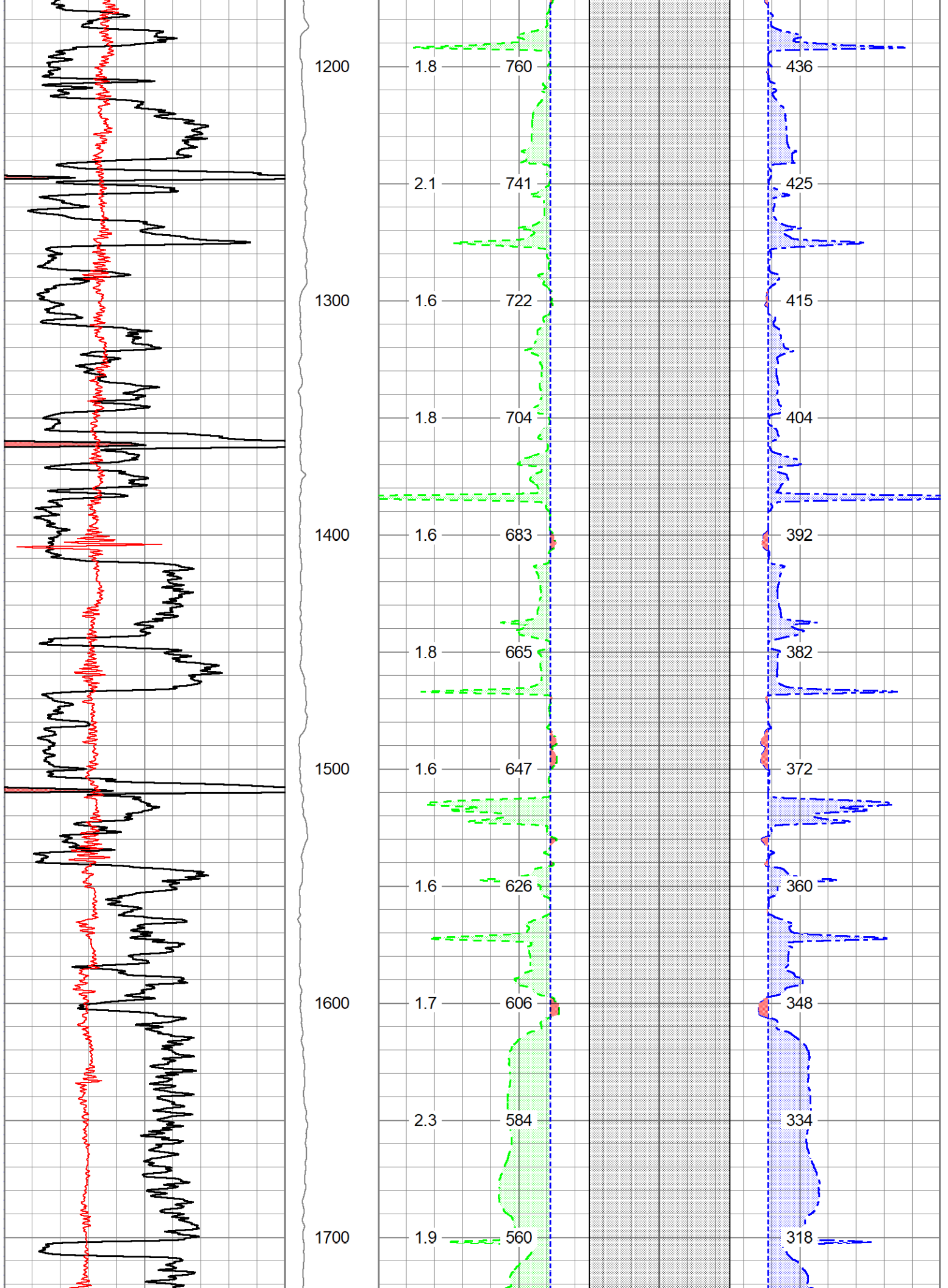
2" BHV/DEVIATION LOG

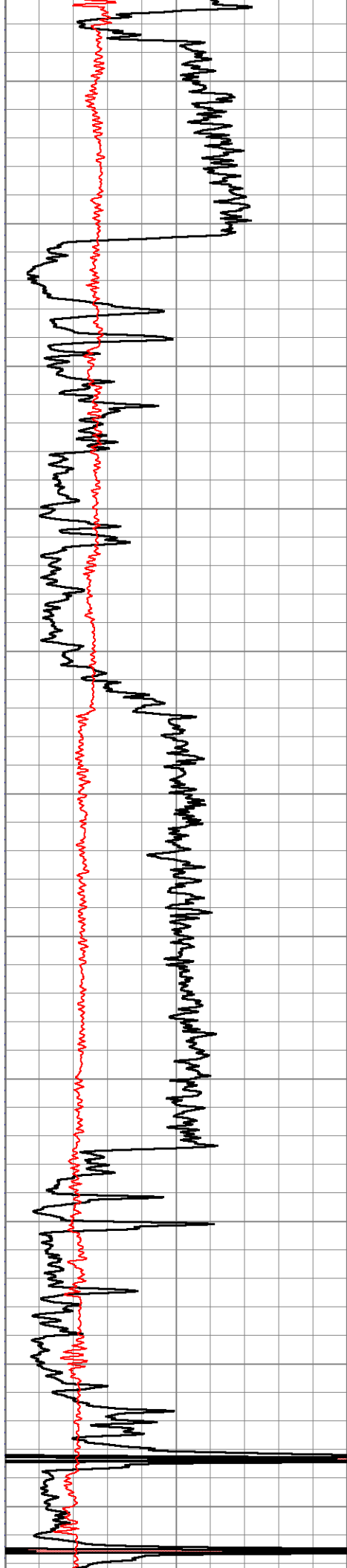
Database File ow1-9122 john brickley.db
 Dataset Pathname pass4.8
 Presentation Format st_bhv_micro_6-16
 Dataset Creation Sat Apr 29 21:57:28 2023
 Charted by Depth in Feet scaled 1:600

0	Gamma Ray (GAPI)	150	DEVI	14	Micro Caliper (in)	4	4	Micro Caliper (in)	14						
2000	LTEN (lb)	0	0 (deg)	10	14	Bit Size (in)	4	4	Bit Size (in)	14					
				CASEOD 5.5" (in)				CASEOD 5.5" (in)							
				DEVI (deg)				TBHV (ft3)				ABHV (ft3)			









1800

1900

2000

2100

2200

1.9 537

1.9 512

1.8 492

1.7 474

1.7 458

1.8 441

2.3 424

1.8 407

1.9 391

1.9 375

1.8 358

303

287

275

265

257

249

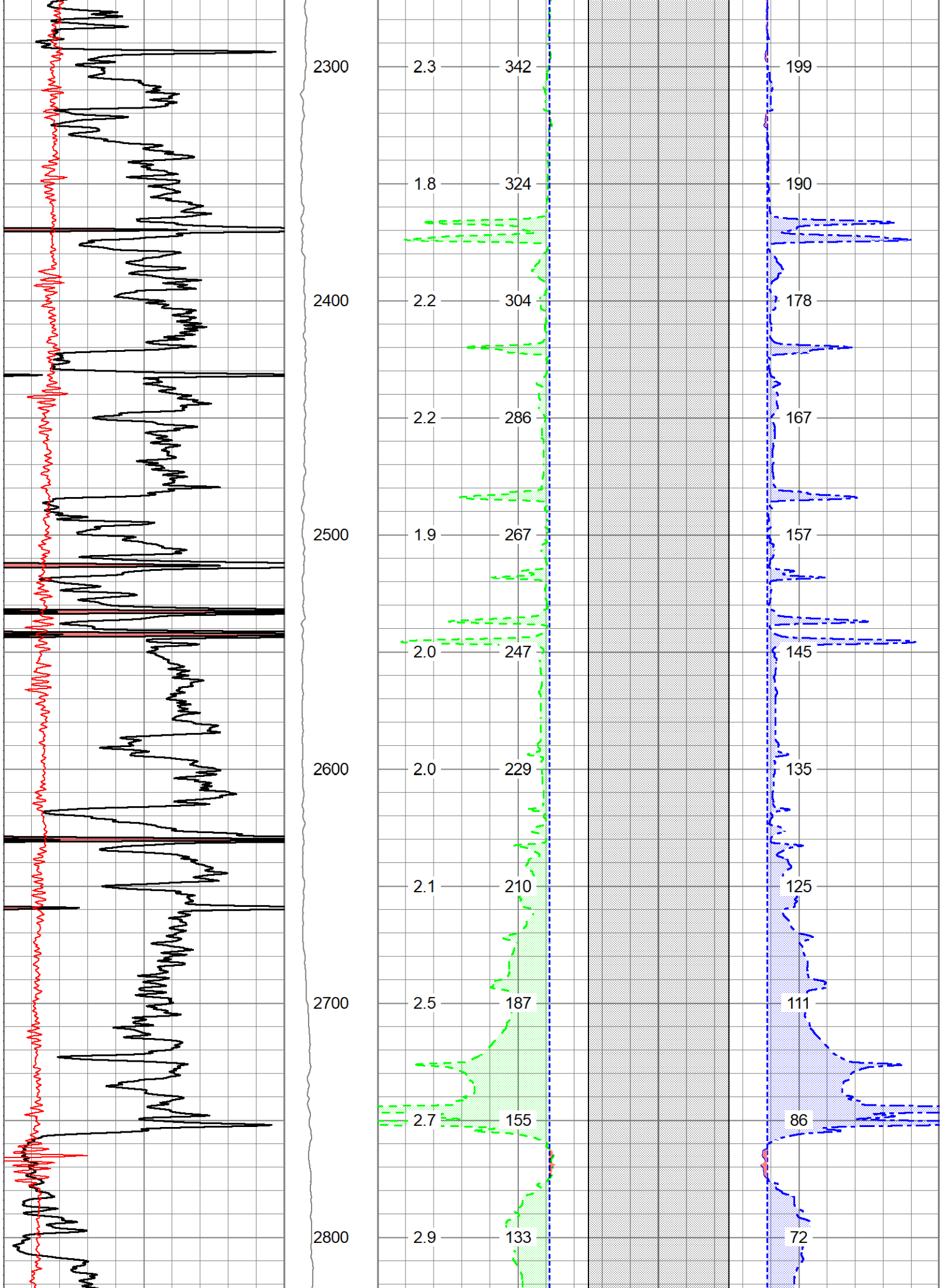
240

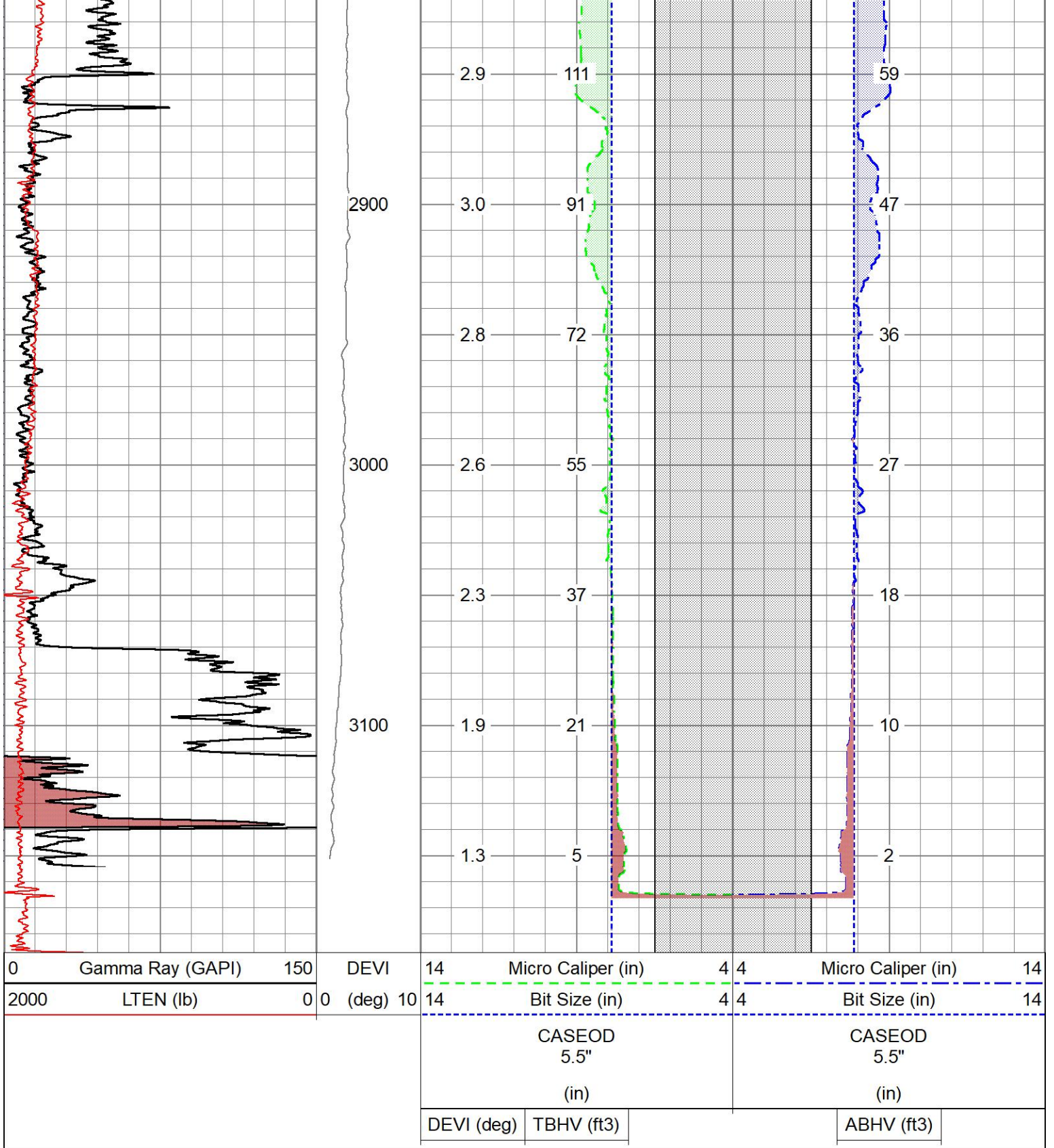
232

223

216

207

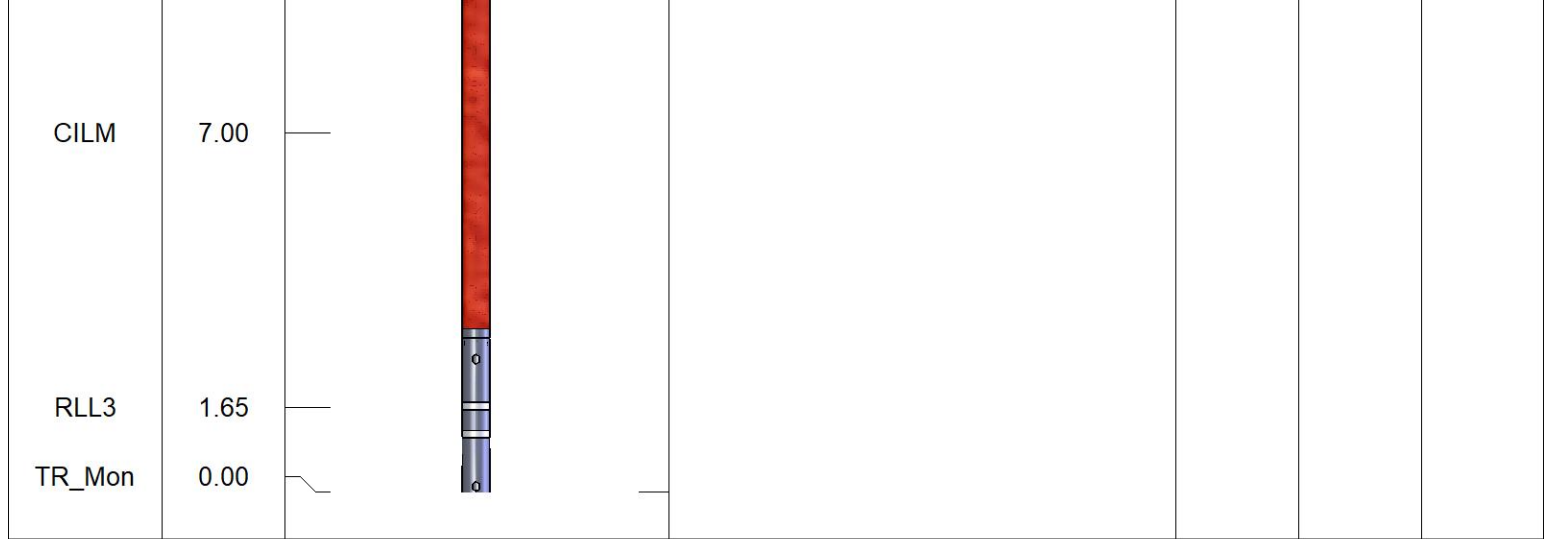




Sensor	Offset (ft)	Schematic	Description	Length (ft)	O.D. (in)	Weight (lb)
ACCY	17.83		ADMYR_TELEMETRY-OSAGE_01 (Refurb01) Admyr Telemetry With Gr, Deviation, ADC board and Pulses Board in it.	3.69	3.25	53.00
ACCX	17.83					
GR	16.65					
FRAMES	15.33					
SSTAT	15.33					
PSTAT	15.33					
ASTAT	15.33					
NEU	11.66					

DCAL	2.79		NEU-ADDON (ADMYR1) Inline Neutron	5.65	3.38	84.00
LS_HV	2.63					
LS8	2.63					
LS7	2.63					
LS6	2.63					
LS5	2.63					
NHARD	2.63					
LSD	2.63					
LS2	2.63					
NLITH	2.63					
LSTAT	2.17		ADT1LITH-B (1B)	9.69	4.25	238.00
LSV	2.17					
SS_HV	2.08					
SS8	2.08					
SS7	2.08					
SS6	2.08					
SS5	2.08					
SS4	2.08					
SSD	2.08					
SS2	2.08	Dataset: ow1-9122 john brickley.db: field/well/run1/pass5.7				
SS1	2.08	Total length: 19.02 ft				
SSV	1.96	Total weight: 375.00 lb				
TR_Mon	0.00	O.D.: 4.25 in				

Sensor	Offset (ft)	Schematic	Description	Length (ft)	O.D. (in)	Weight (lb)
ACCY	31.04		ADMYR_TELEMETRY-OSAGE_01 (Refurb01) Admyr Telemetry With Gr, Deviation, ADC board and Pulses Board in it.	3.69	3.25	53.00
ACCX	31.04					
GR	29.86					
FRAMES	28.54					
SSTAT	28.54					
PSTAT	28.54					
ASTAT	28.54					
MI	23.00					
MN	23.00					
MCAL	22.00					
ASTAT2	21.33					
SP	10.92					
CILD	10.92		DIL-G (080402_ (PINK TOOL)) Gearhart	21.33	4.00	290.00



Dataset: ow1-9122 john brickley.db: field/well/run1/pass4.9
 Total length: 32.23 ft
 Total weight: 480.00 lb
 O.D.: 5.13 in