



# MICROLOG

Company JOHN BRICKLEY DBA B8 INVESTMENTS  
 Well SEGLEM # 6  
 Field REYNOLDS-SCHAFFER  
 County BUTLER  
 State KANSAS

Company JOHN BRICKLEY DBA B8 INVESTMENTS  
 Well SEGLEM # 6  
 Field REYNOLDS-SCHAFFER  
 County BUTLER State KANSAS

Location: API #: 15-015-24197-00-00  
 E/2 NE NW/NW  
 330' FNL & 1060' FWL  
 SEC 16 TWP 27S RGE 6E  
 Permanent Datum GL Elevation 1400  
 Log Measured From KB 12  
 Drilling Measured From KB  
 Other Services  
 DIL  
 CD/LN  
 Elevation  
 K.B. 1412  
 D.F. 1411  
 G.L. 1400

Date	4-29-2023
Run Number	ONE
Depth Driller	3190
Depth Logger	3187
Bottom Logged Interval	3185
Top Log Interval	210
Casing Driller	8.625" @ 210
Casing Logger	8.625" @ 222 GL
Bit Size	7.875"
Type Fluid in Hole	MUD
Density / Viscosity	9.2 / 42
pH / Fluid Loss	10 / 9.6
Source of Sample	PIT
Rm @ Meas. Temp	2.1 @ 70
Rmf @ Meas. Temp	1.68 @ 70
Rmc @ Meas. Temp	2.52 @ 70
Source of Rmf / Rmc	CALC
Rm @ BHT	1.26 @ 109
Time Circulation Stopped	1:00 PM
Time Logger on Bottom	9:00 PM
Maximum Recorded Temperature	109
Equipment Number	OW1
Location	HOMINY, OK
Recorded By	SHELDON TYLER
Witnessed By	MR. BRICKLEY

<<< Fold Here >>>

All interpretations are opinions based on inferences from electrical or other measurements and we cannot and do not guarantee the accuracy or correctness of any interpretation, and we shall not, except in the case of gross or willful negligence on our part, be liable or responsible for any loss, costs, damages, or expenses incurred or sustained by anyone resulting from any interpretation made by any of our officers, agents or employees. These interpretations are also subject to our general terms and conditions set out in our current Price Schedule.

### Comments

FILE # OW1-9122 JOHN BRICKLEY  
 KIDD, LUKE  
 THANK YOU FOR USING OSAGE WIRELINE

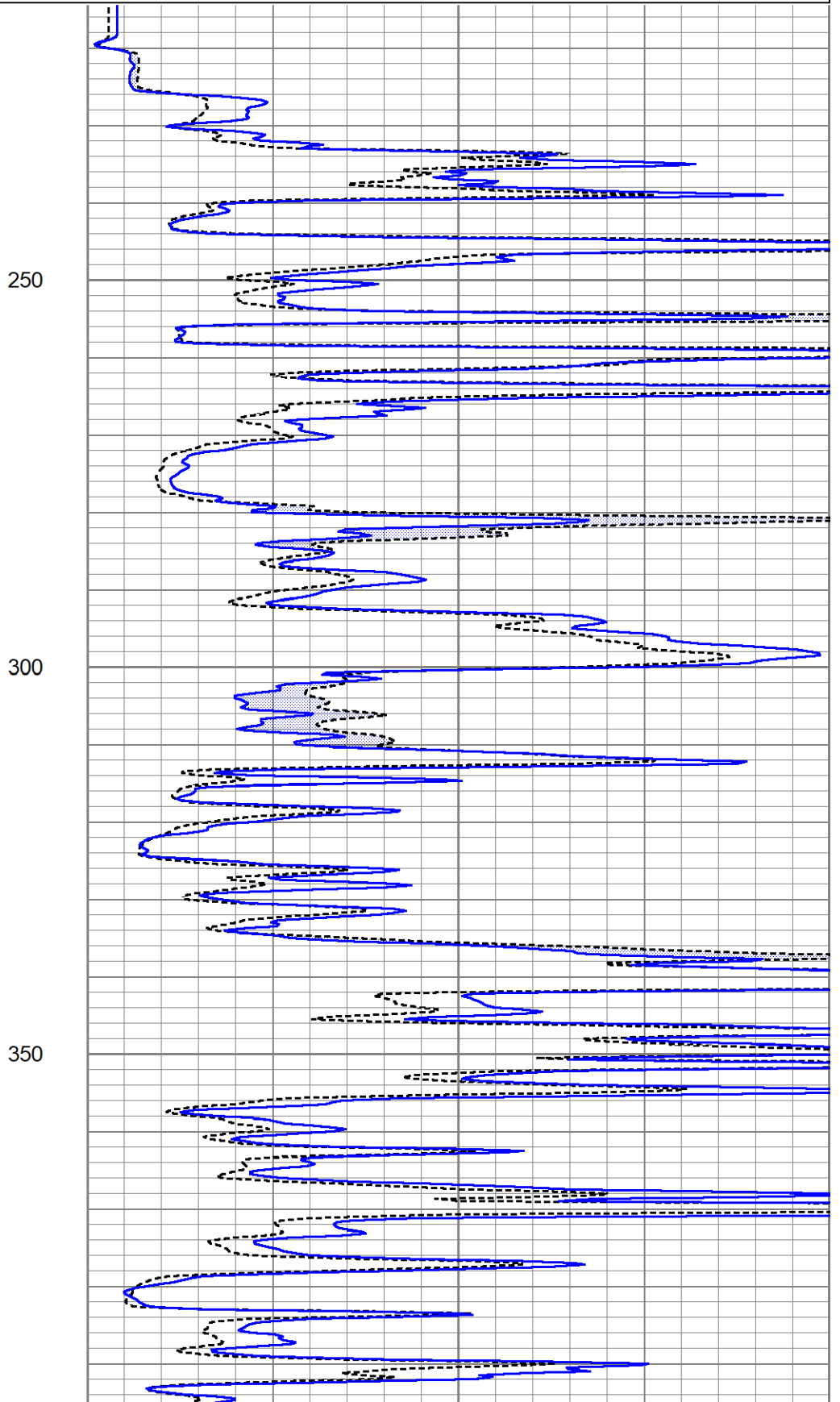
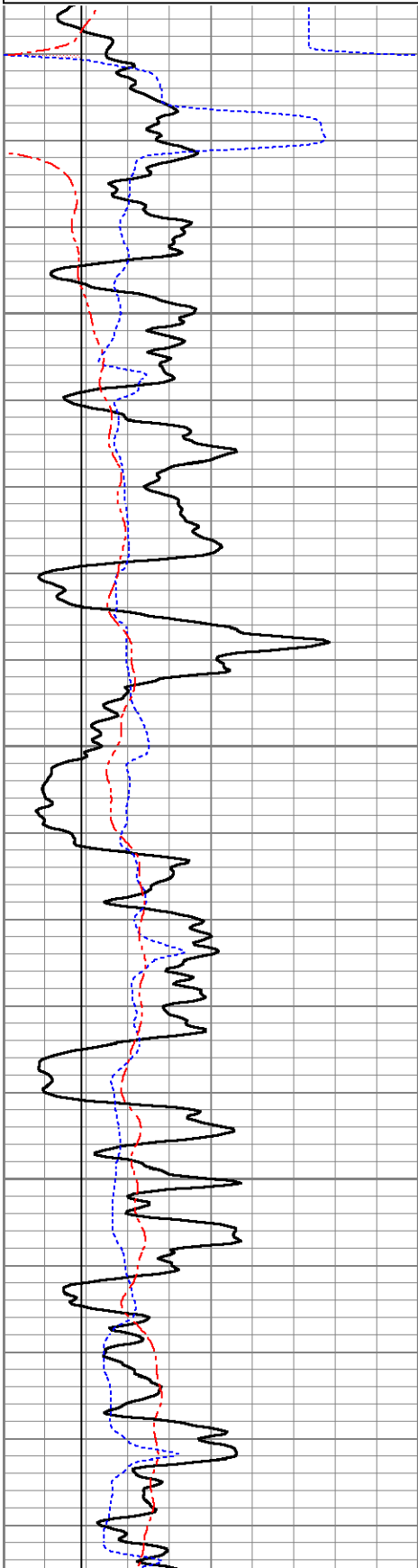


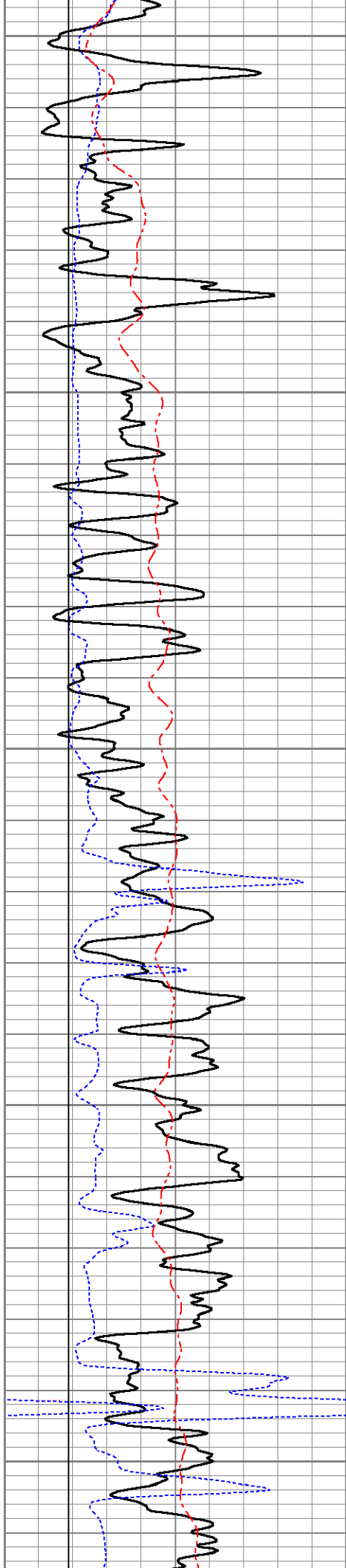
# 5" MICROLOG

Database File ow1-9122 john brickley.db  
 Dataset Pathname pass4.7  
 Presentation Format st\_digitalmicro\_6-16  
 Dataset Creation Sat Apr 29 21:57:21 2023  
 Charted by Depth in Feet scaled 1:240

0	Gamma Ray (GAPI)	150
6	Micro Caliper (in)	16
6	Bit Size (in)	16
0	Spontaneous Potential (mV)	200

0	Micro Normal (Ohm-m)	40
0	Micro Inverse (Ohm-m)	40





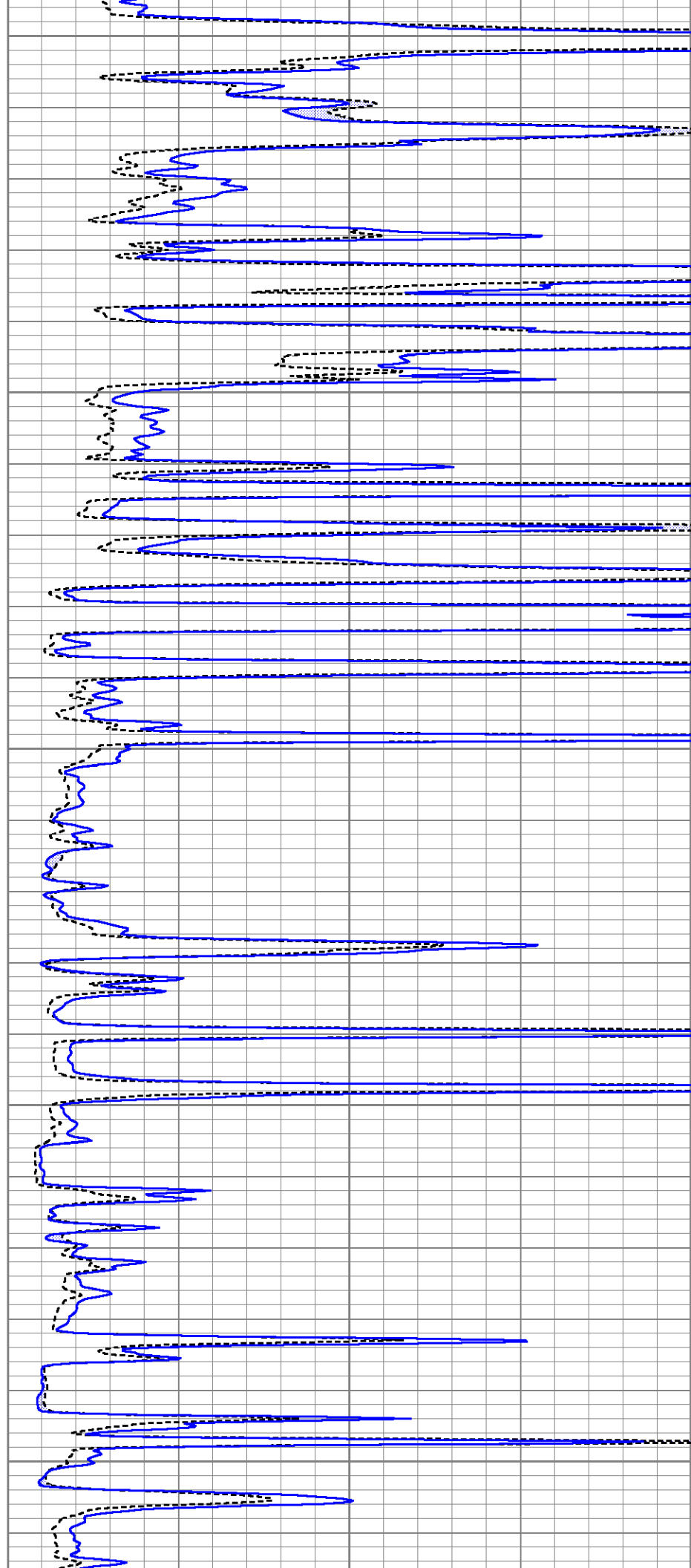
400

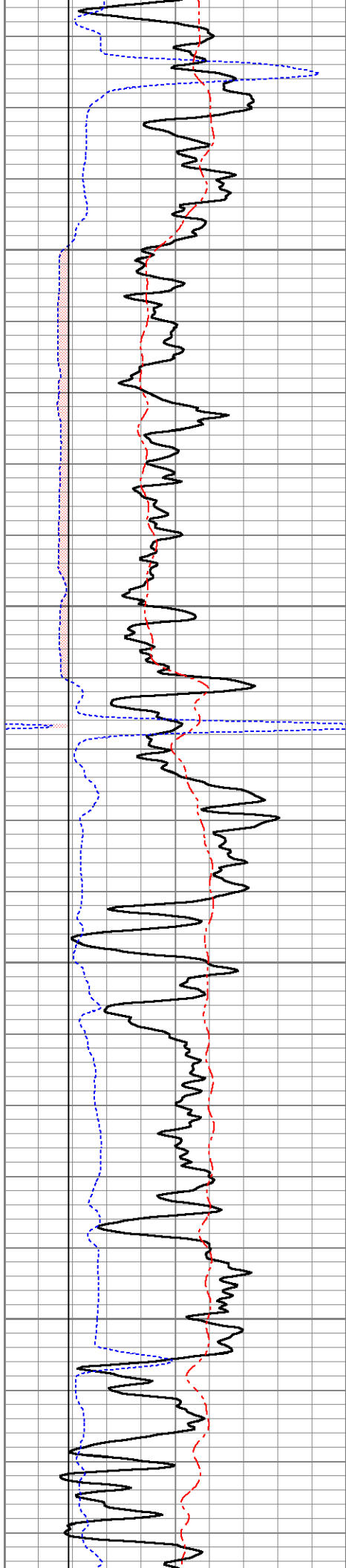
450

500

550

600



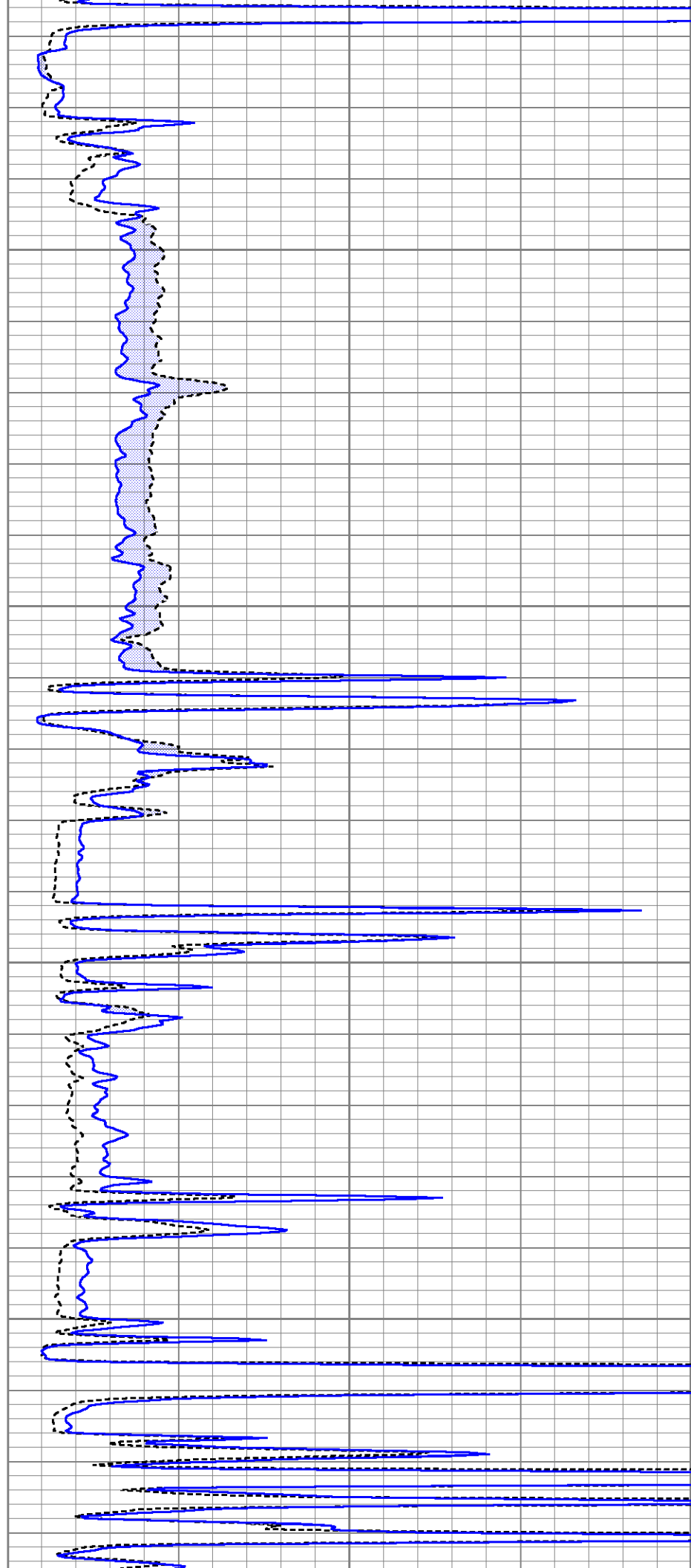


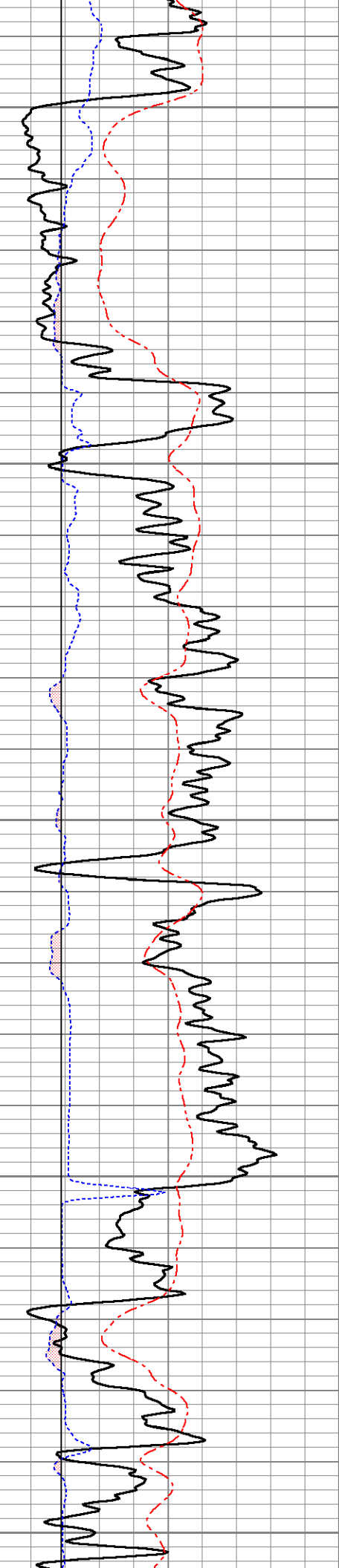
650

700

750

800





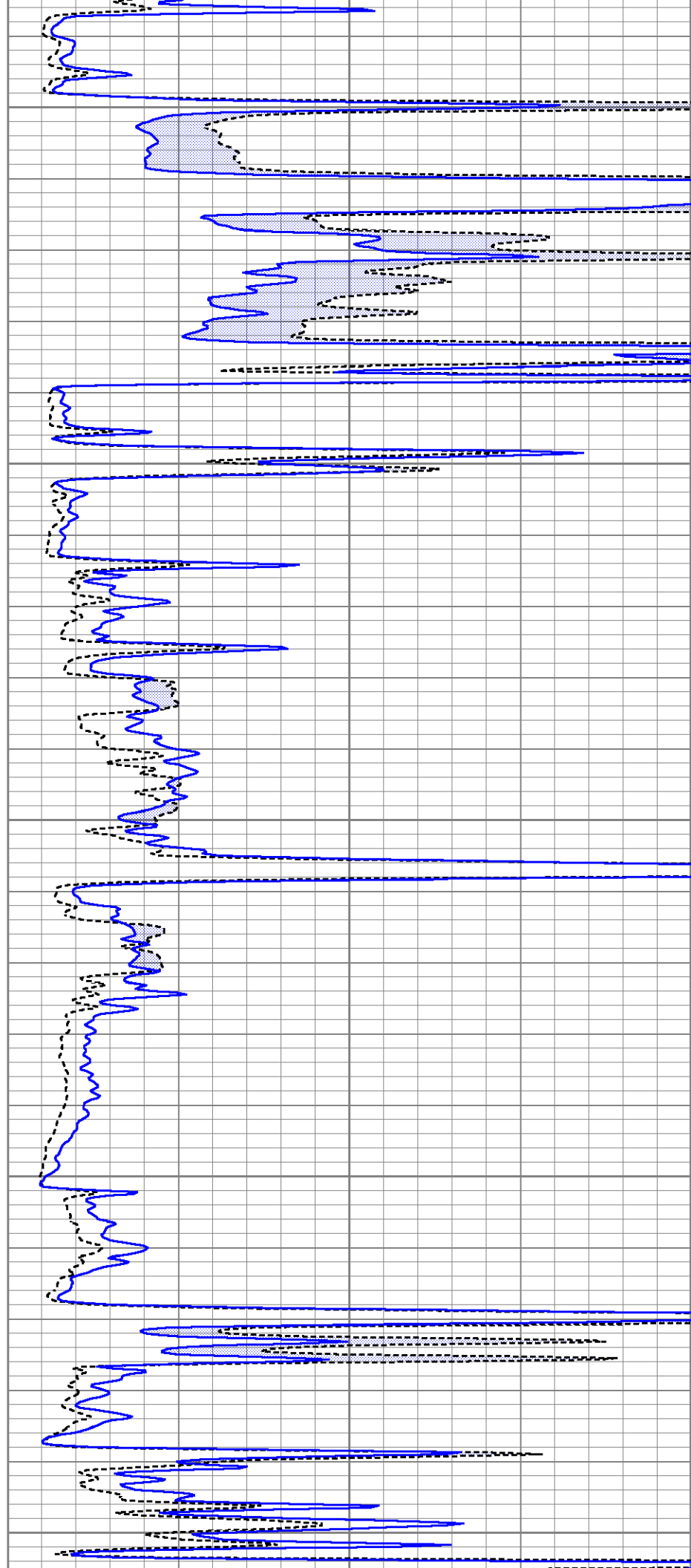
850

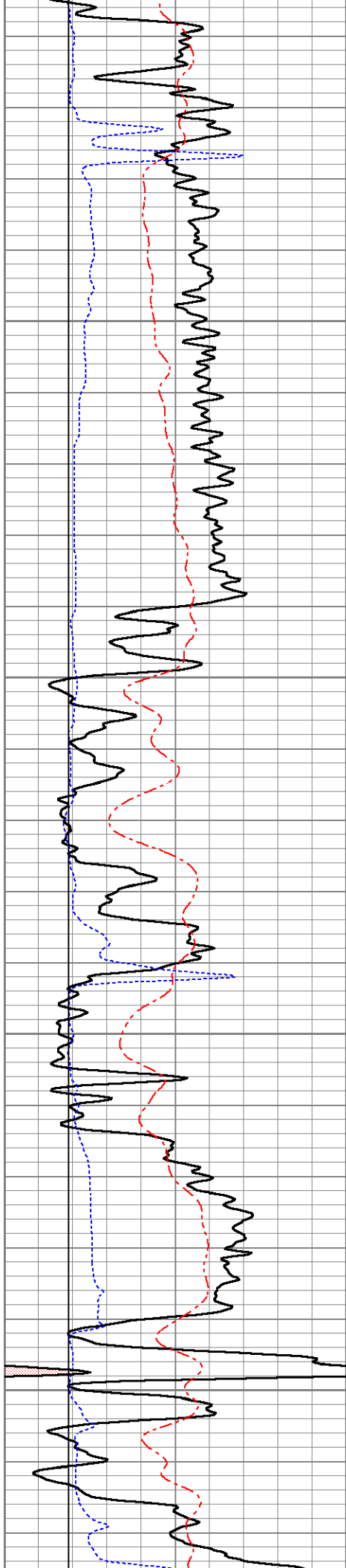
900

950

1000

1050



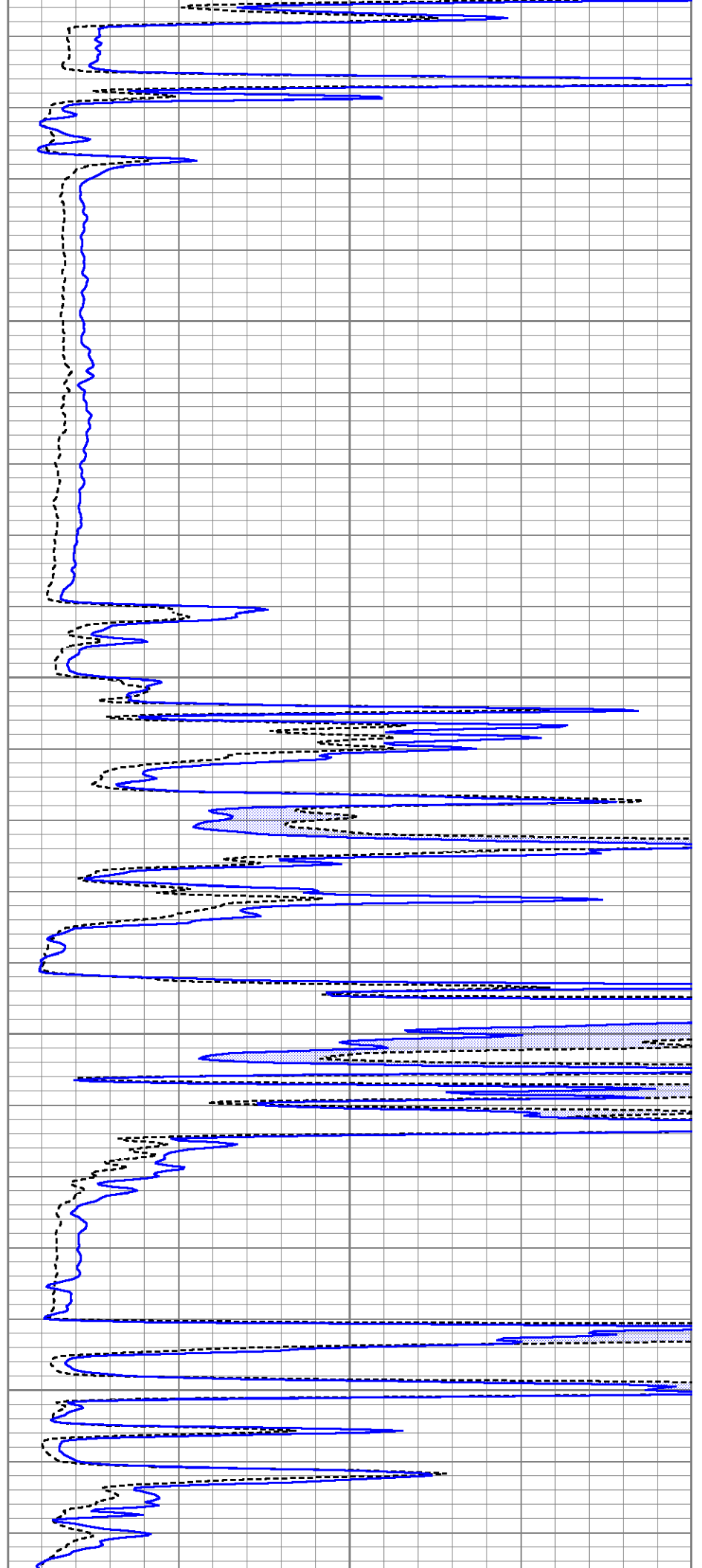


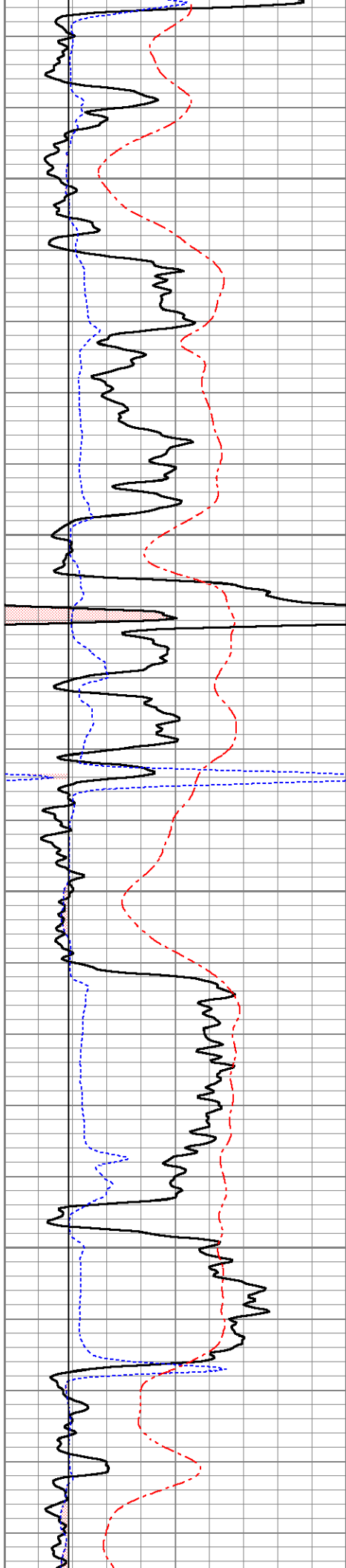
1100

1150

1200

1250



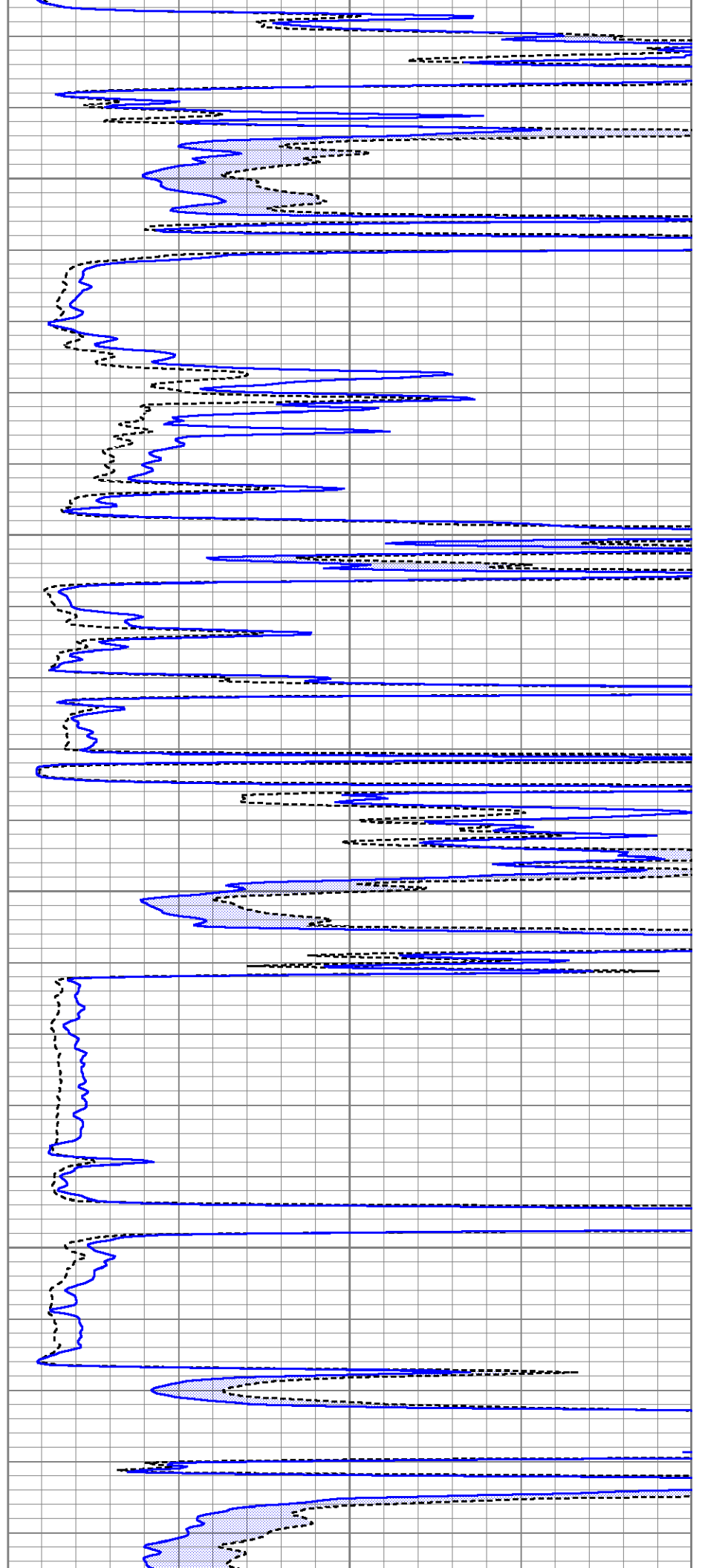


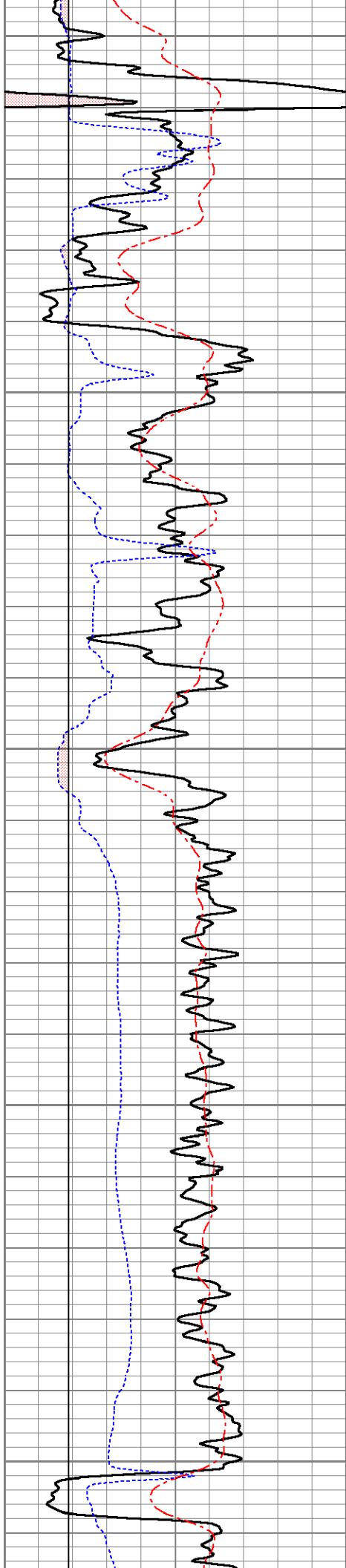
1300

1350

1400

1450





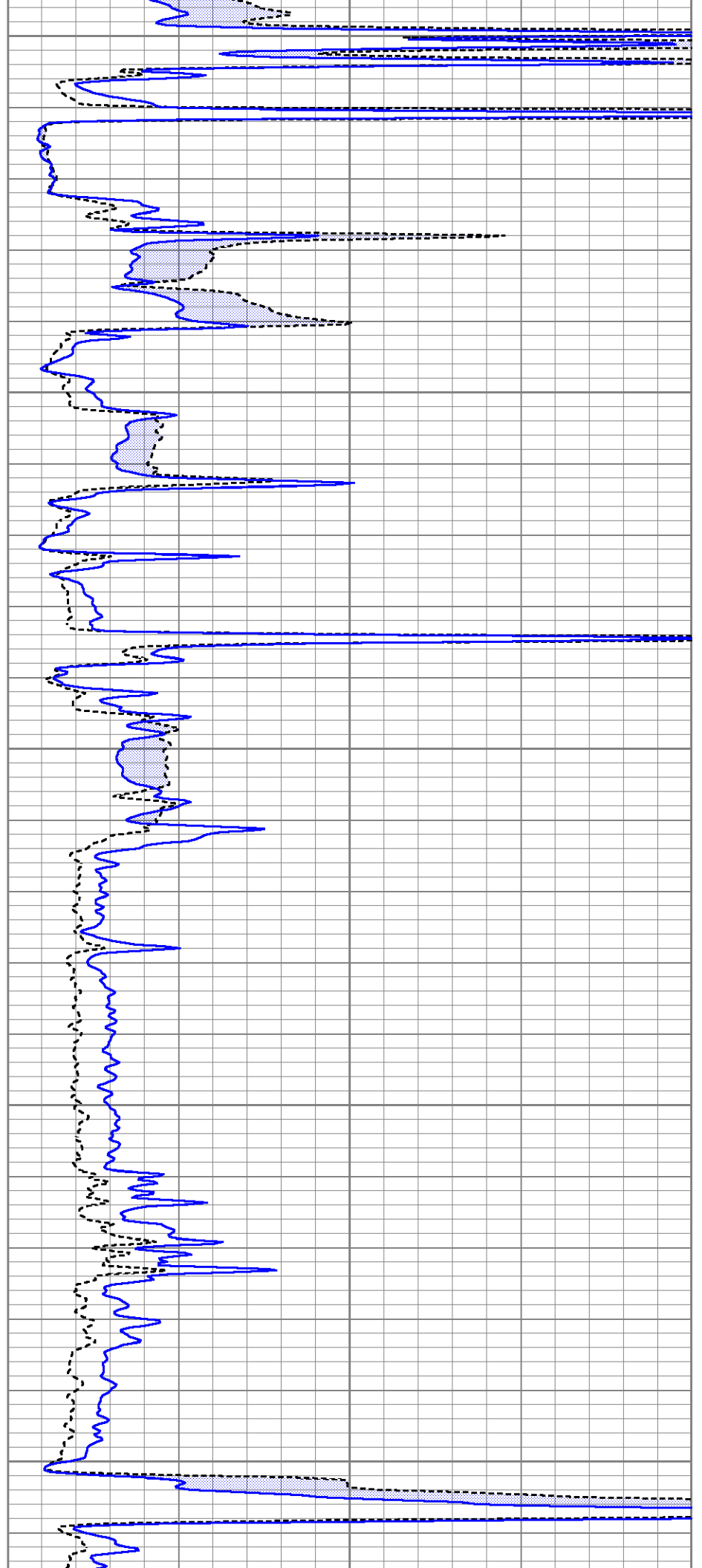
1500

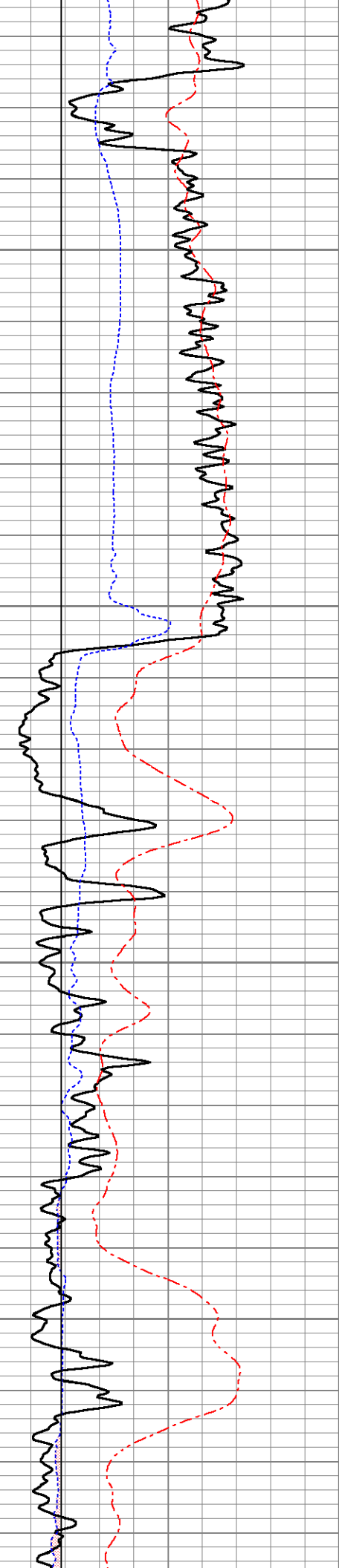
1550

1600

1650

1700



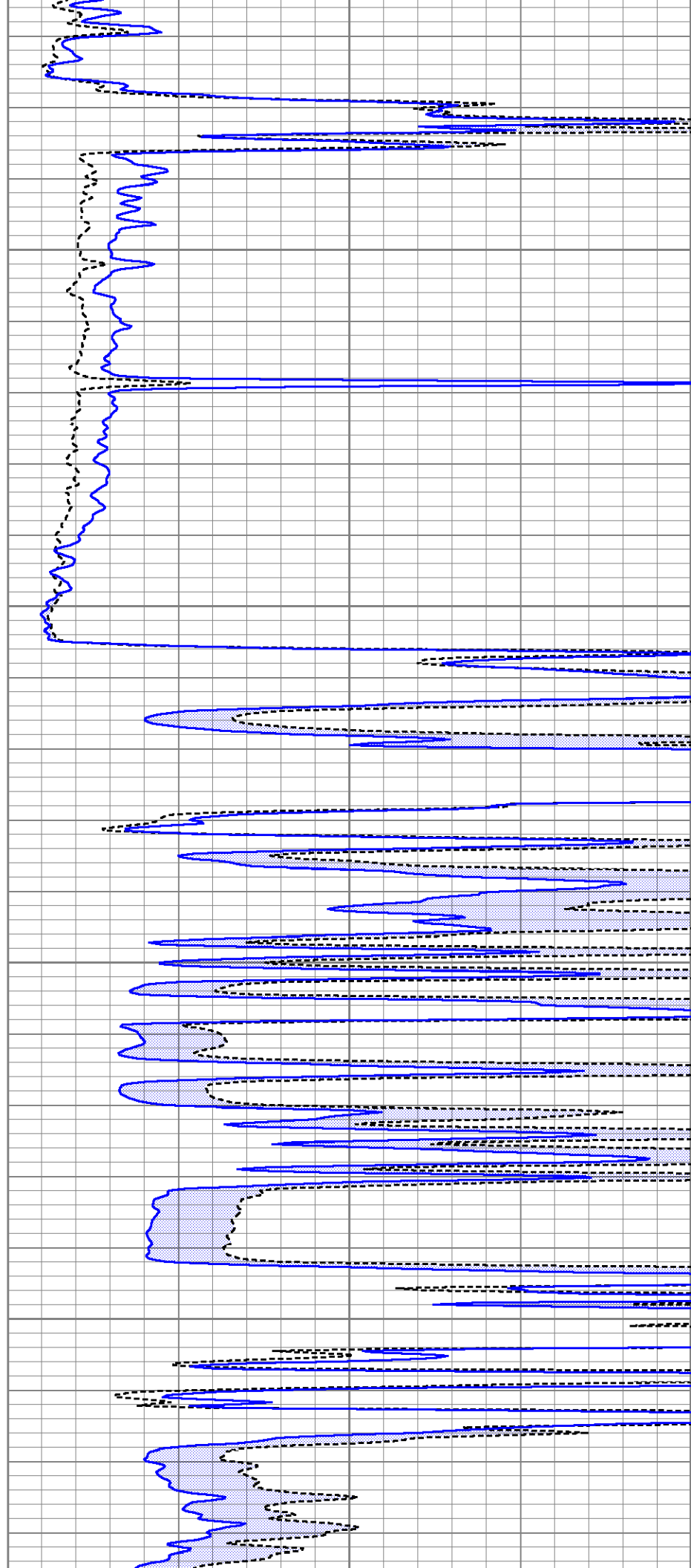


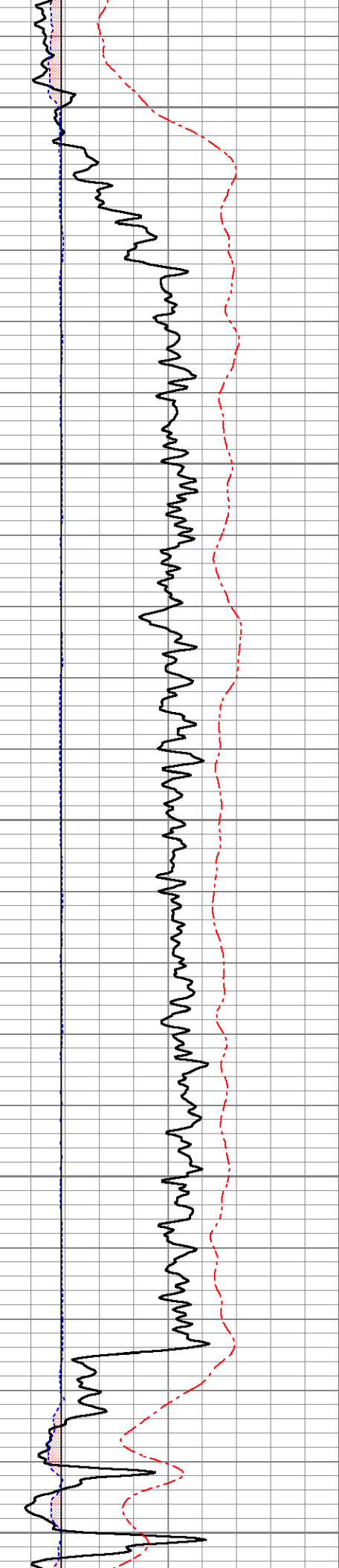
1750

1800

1850

1900





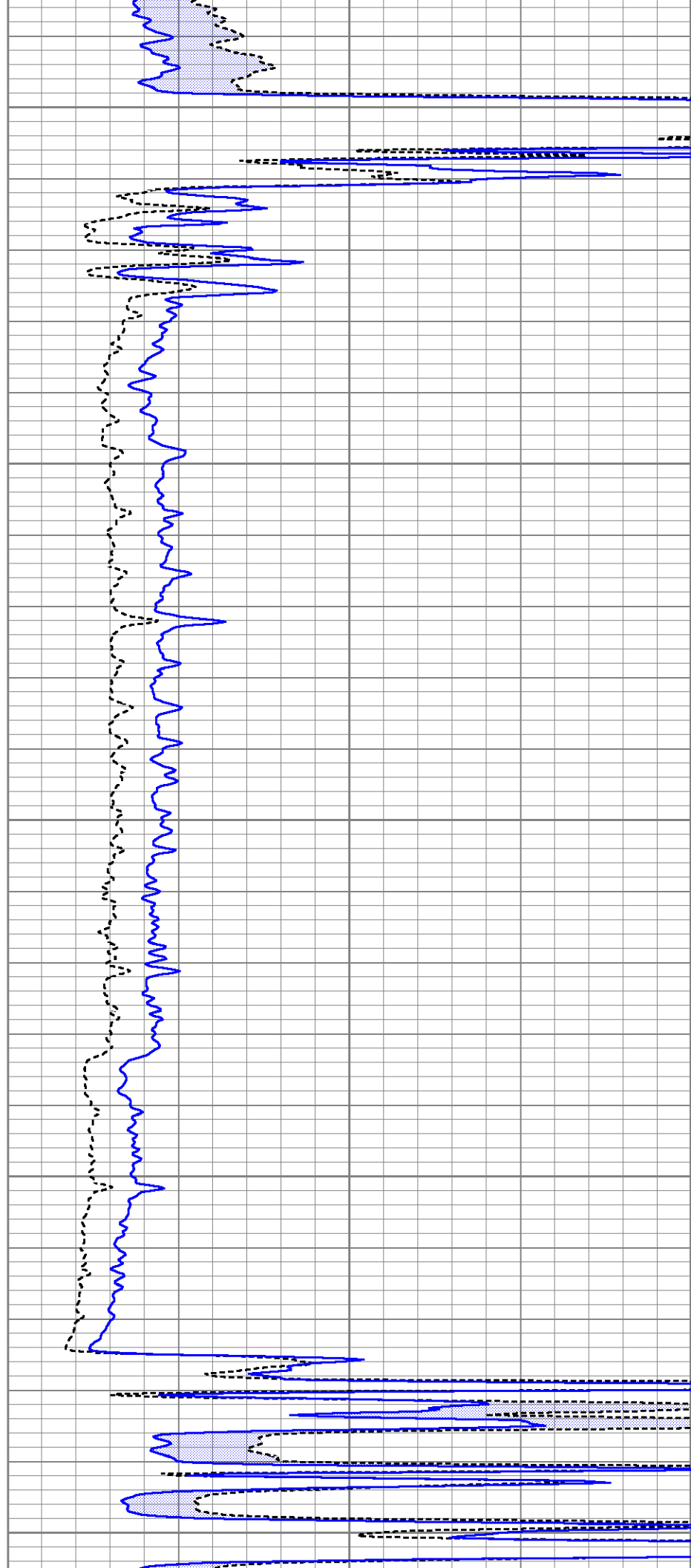
1950

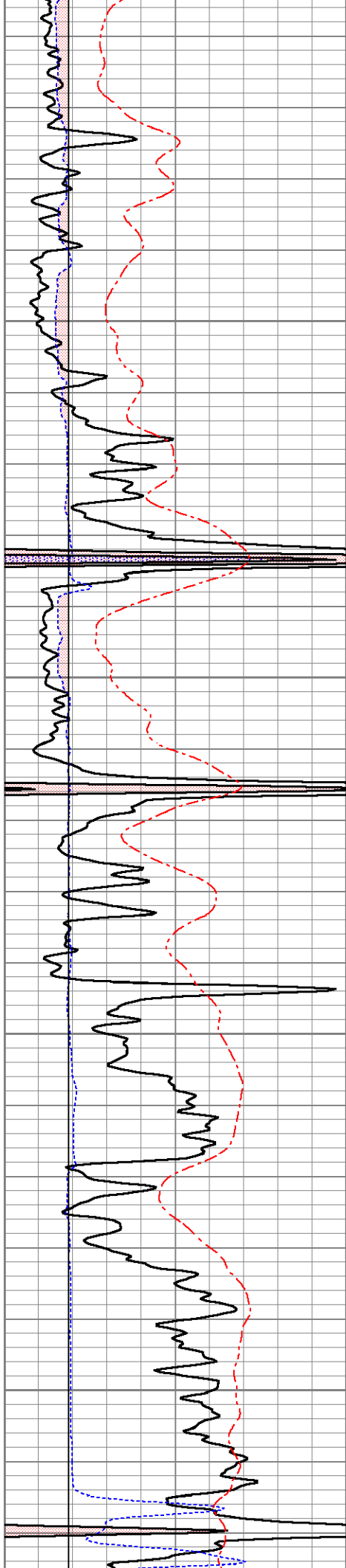
2000

2050

2100

2150



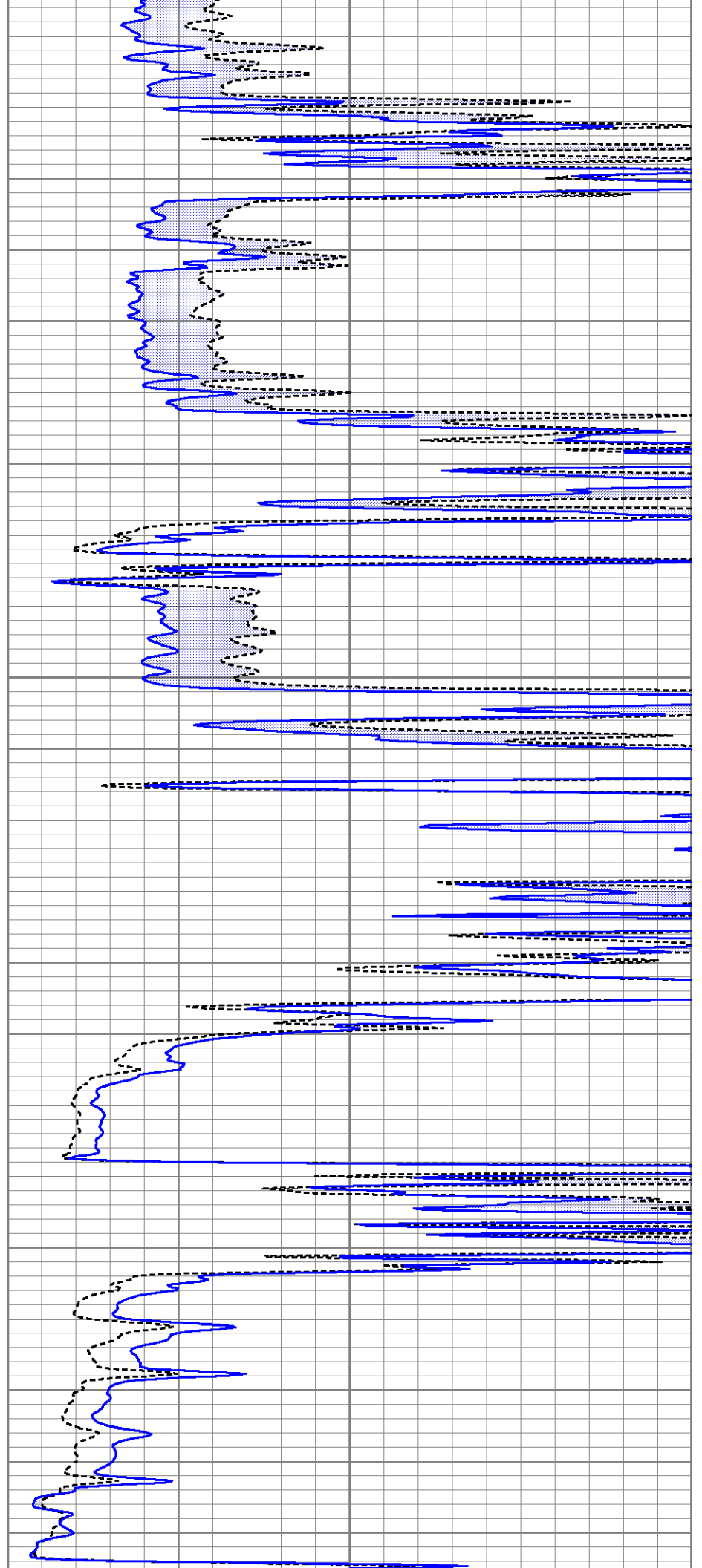


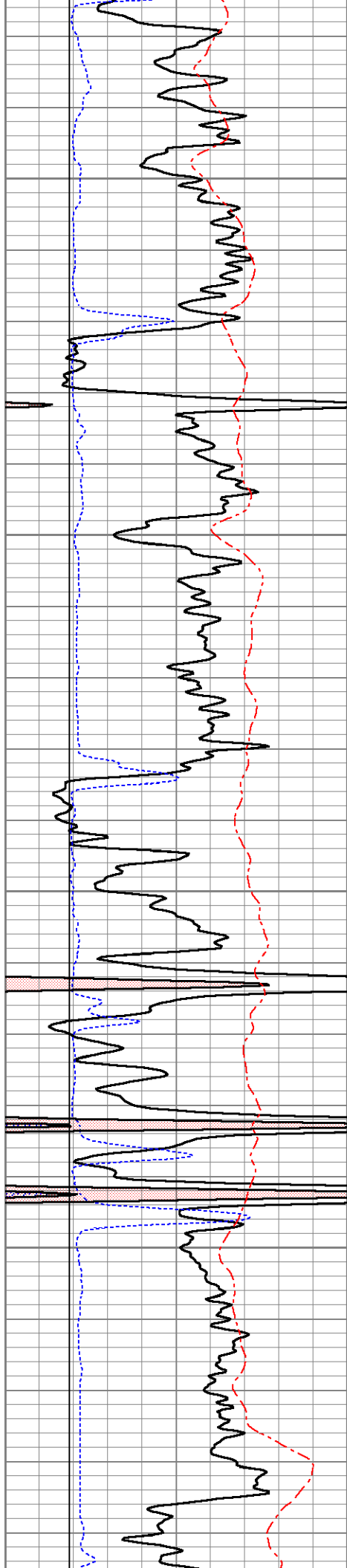
2200

2250

2300

2350



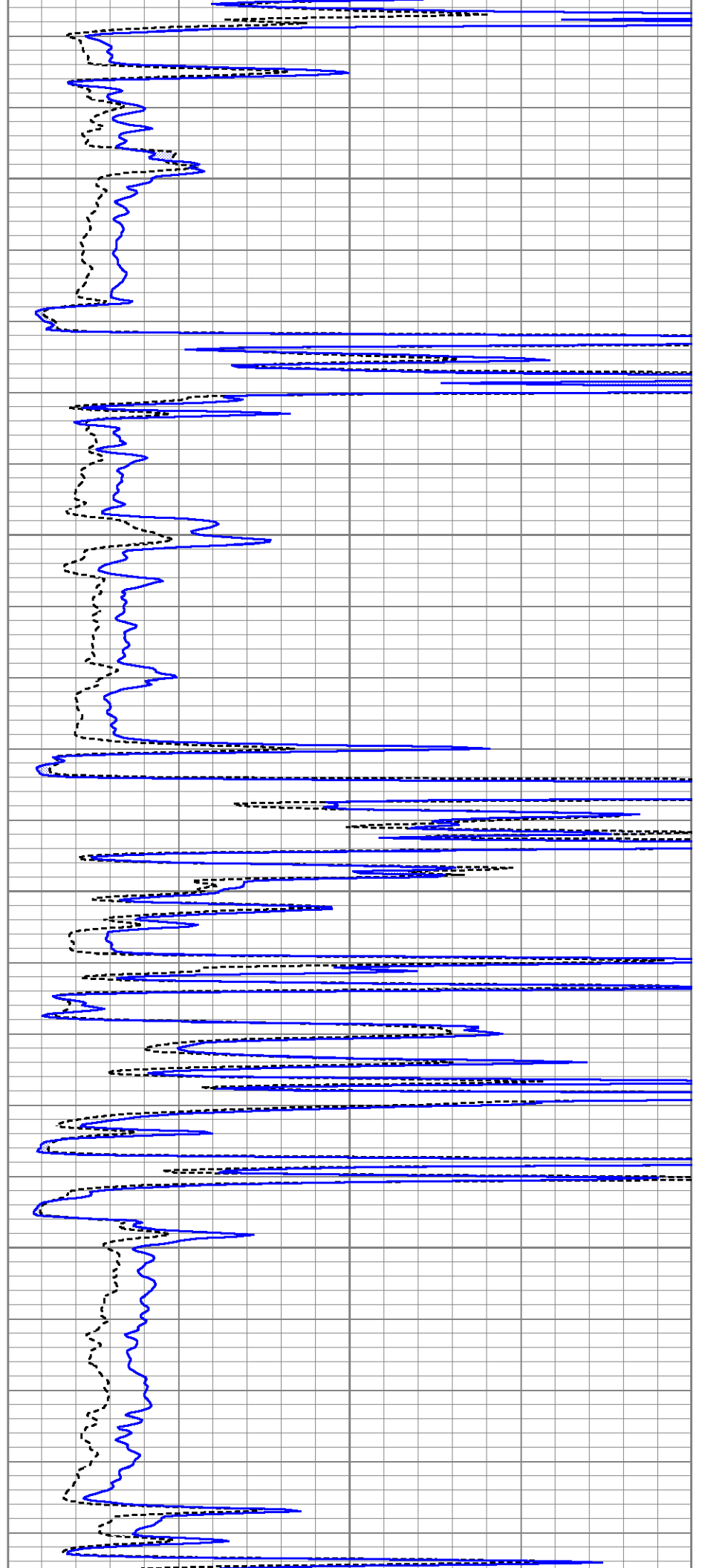


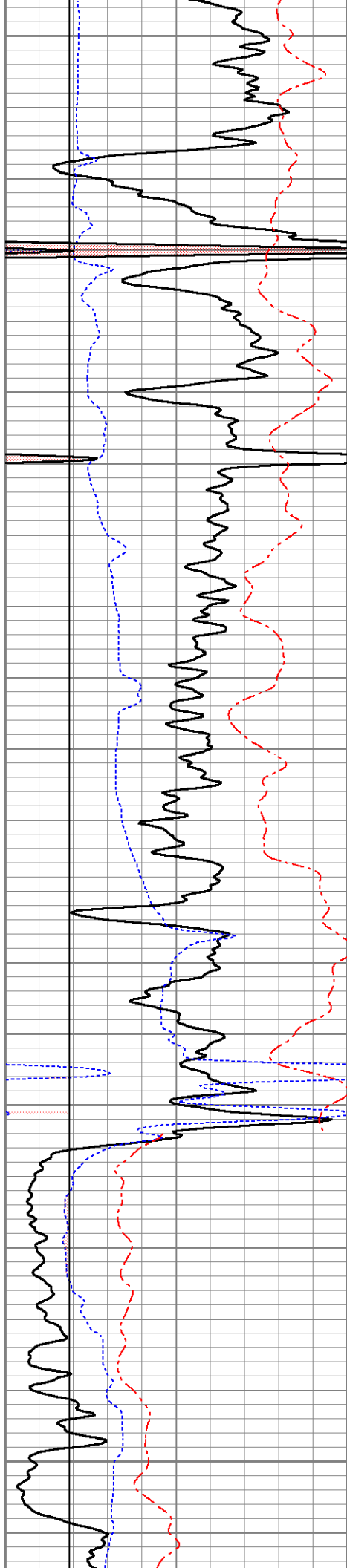
2400

2450

2500

2550





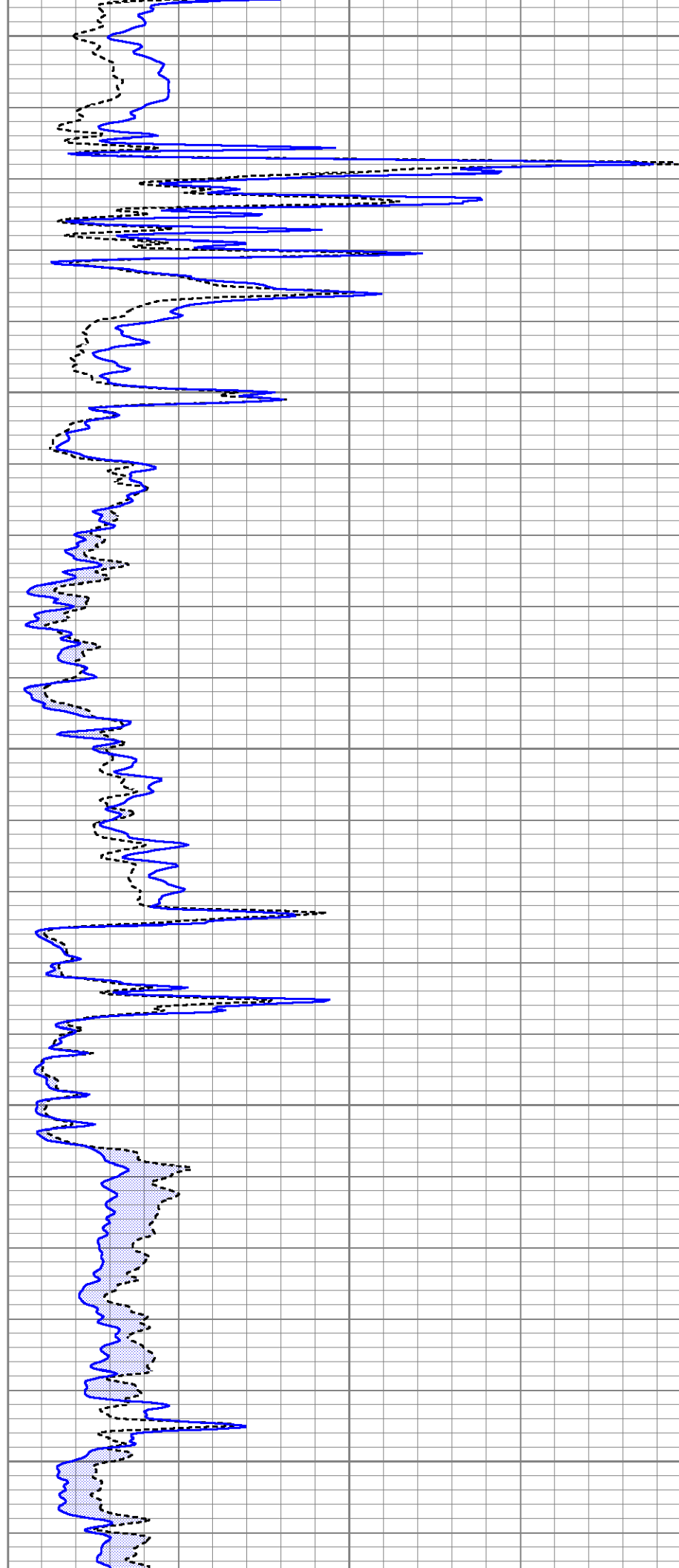
2600

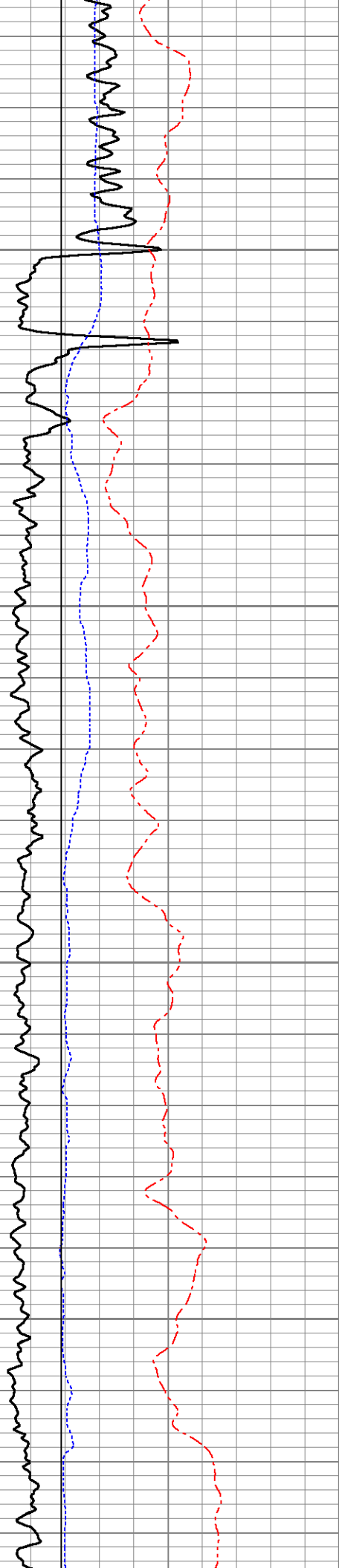
2650

2700

2750

2800



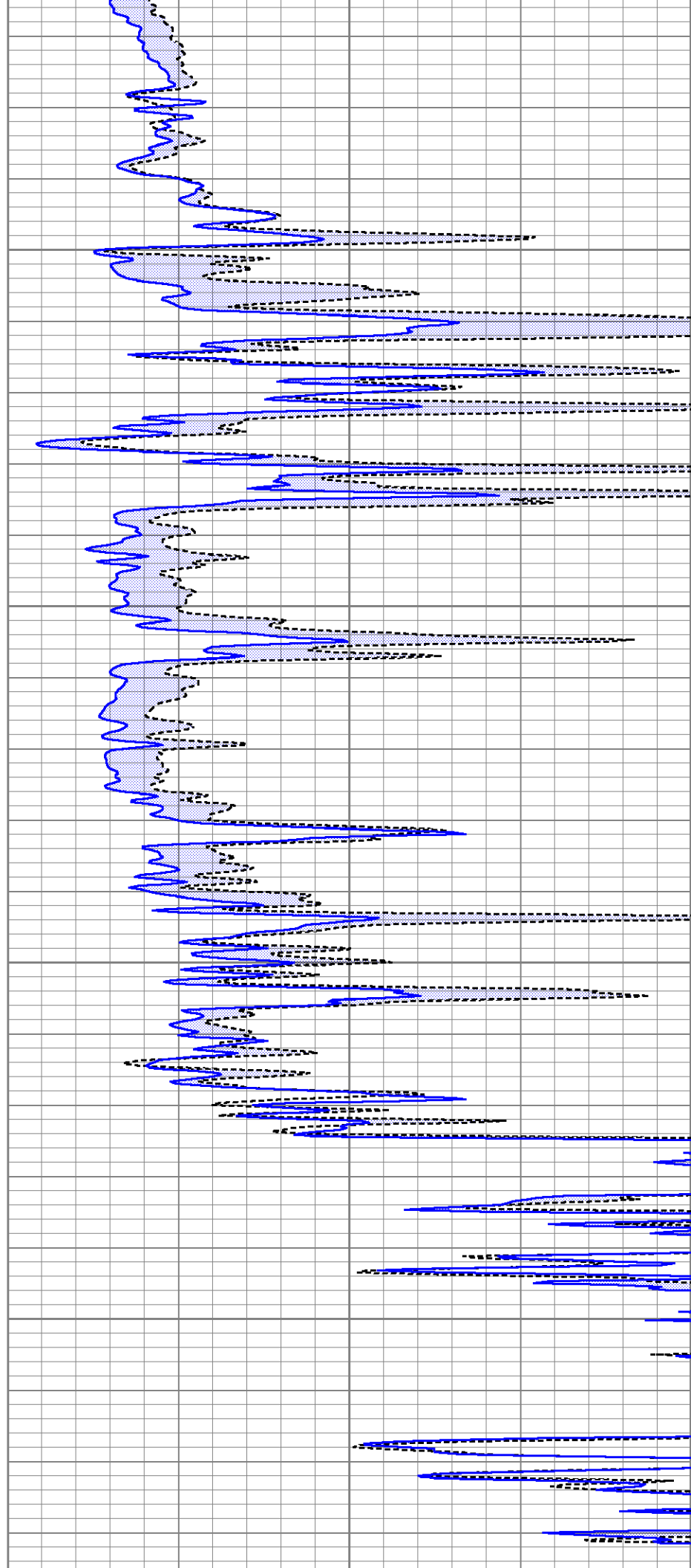


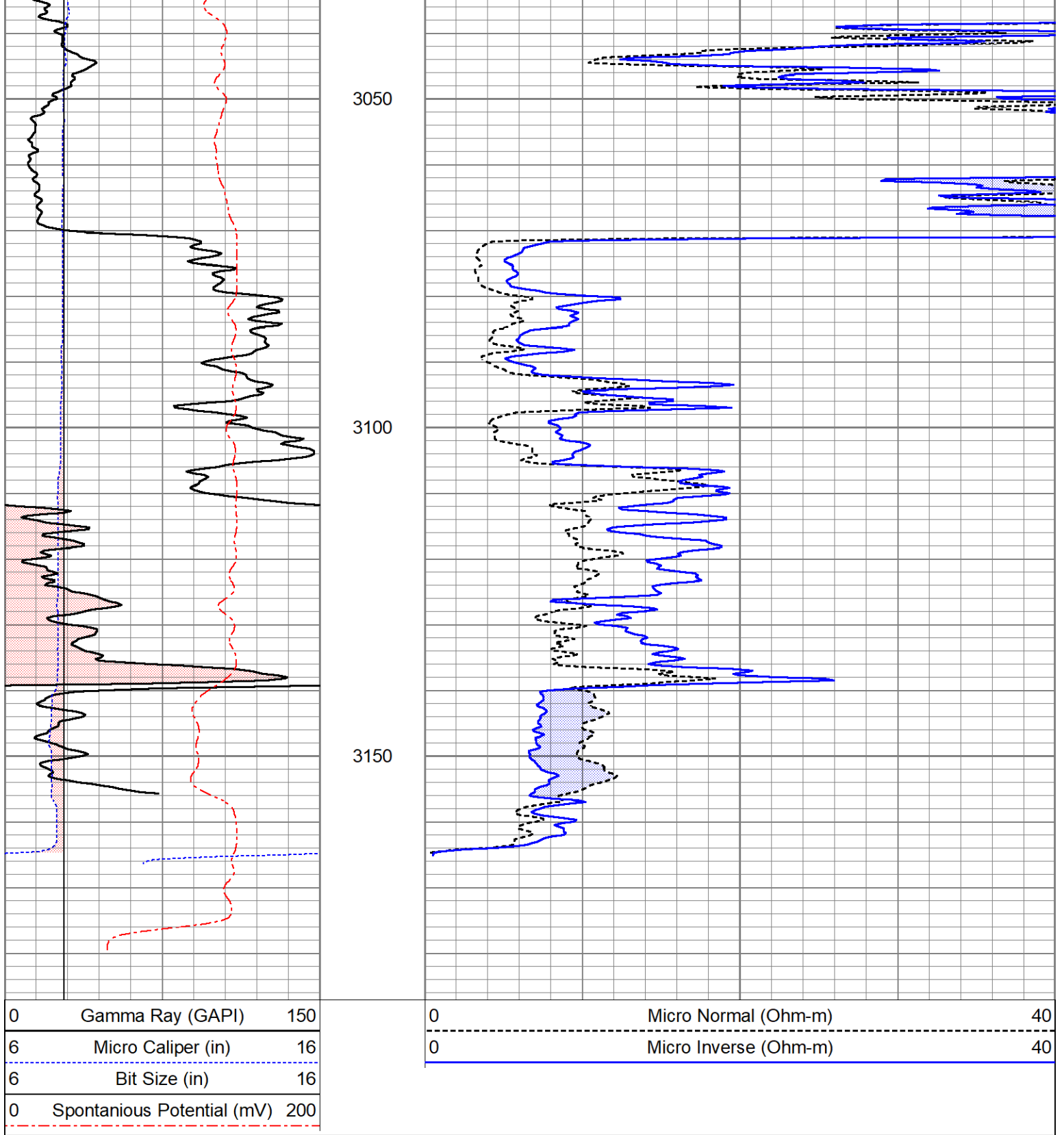
2850

2900

2950

3000





### Calibration Report

Database File      ow1-9122 john brickley.db  
 Dataset Pathname    pass4.7  
 Dataset Creation    Sat Apr 29 21:57:21 2023

### Dual Induction Calibration Report

Serial-Model:	080402_ ( PINK TOOL )-G
Surface Cal Performed:	Thu Aug 11 08:13:50 2022
Downhole Cal Performed:	Tue Nov 17 10:50:14 2020
After Survey Verification Performed:	Tue Nov 17 10:50:14 2020

Surface Calibration

Surface Calibration				References			Results	
Loop:	Readings			References			m	b
	Air	Loop		Air	Loop			
Deep	0.007	0.642	V	10.000	380.000	mmho/m	582.797	5.966
Medium	0.010	0.728	V	-12.000	420.000	mmho/m	601.054	-17.822
Internal:	Cal			Cal			m	b
Deep	0.007	0.642	V	0.000	350.000	mmho/m	550.717	-3.768
Medium	0.010	0.729	V	0.000	550.000	mmho/m	764.510	-7.354

Downhole Calibration								
	Readings				References		Results	
	Zero	Cal			Zero	Cal	m'	b'
Deep	-2.869	354.028	mmho/m	-0.044	350.323	mmho/m	0.982	2.773
Medium	-3.741	414.629	mmho/m	-0.037	400.340	mmho/m	0.957	3.543
LL3		9.500	V		2500.000	Ohm-m		
		0.000	V		20.000	Ohm-m		
		-9.500	V		5000.000	mmho-m		

After Survey Verification								
	Readings				Targets		Results	
	Zero	Cal			Zero	Cal	m'	b'
Deep	0.000	0.000	mmho/m	-2.869	354.028	mmho/m	1.000	0.000
Medium	0.000	0.000	mmho/m	-3.741	414.629	mmho/m	1.000	0.000
LL3		0.000	Ohm-m		2.000	Ohm-m		
		0.000	Ohm-m		500.000	Ohm-m		
		0.000	mmho-m		1.000	mmho-m		

**Microlog Calibration Report**

Serial-Model: Performed:	070527-Osage Fri Dec 30 13:02:23 2022
-----------------------------	--

	Readings				References		Results	
	Zero	Cal			Zero	Cal	m	b
Normal	-0.0028	0.0887	V	0.0000	10.0000	Ohm-m	109.2780	0.3082
Inverse	-0.0060	0.1128	V	0.0000	10.0000	Ohm-m	84.1776	0.5012
Caliper	1.7618	4.3262	V	4.8000	11.2500	in	2.5153	0.3685

**Inclinometer Calibration Report**

Performed:	Thu Oct 8 13:57:38 2020					
	Low Read.	High Read.		Low Ref.	High Ref.	
X Accelerometer	205.00	1843.00		-1.00	1.00	gee
Y Accelerometer	205.00	1843.00		-1.00	1.00	gee
Z Accelerometer						gee

**Gamma Ray Calibration Report**

Serial Number:	Refurb01
Tool Model:	OSAGE_01
Performed:	Mon Jan 18 09:02:16 2021

Calibrator Value:	150.0	GAPI
Background Reading:	125.0	cps
Calibrator Reading:	875.0	cps
Sensitivity:	0.2000	GAPI/cps

Sensor	Offset (ft)	Schematic	Description	Length (ft)	O.D. (in)	Weight (lb)	
ACCY	31.04		ADMYR_TELEMETRY-OSAGE_01 (Refurb01) Admyr Telemetry With Gr, Deviation, ADC board and Pulses Board in it.	3.69	3.25	53.00	
ACCX	31.04						
GR	29.86						
FRAMES	28.54						
SSTAT	28.54						
PSTAT	28.54						
ASTAT	28.54						
				MICRO_DIG-Osage (070527) Digital Microlog	7.21	5.13	137.00
MI	23.00						
MN	23.00						
MCAL	22.00						
ASTAT2	21.33						
SP	10.92						
CILD	10.92		DIL-G (080402_ ( PINK TOOL )) Gearhart	21.33	4.00	290.00	
CILM	7.00						
RLL3	1.65						
TR_Mon	0.00						

Dataset: ow1-9122 john brickley.db: field/well/run1/pass4.7  
Total length: 32.23 ft

Total weight: 480.00 lb  
O.D.: 5.13 in