



MIDWEST SURVEYS
LOGGING - PERFORATING - CONSULTING SERVICES
P.O. Box 68, Osawatomie, KS 66064
913 / 755 - 2128

GAMMA RAY / NEUTRON / CCL

File No.

Company McFadden Oil Company

Well Lorance No. 2-A

Field Colony - Welda

County Anderson State Kansas

Location

2200' FSL & 4550' FEL
SW-NE-NW-SW

Other Services
Perforate

Sec. 10 Twp. 23S Rge. 19E Elevation

Permanant Datum GL GL 1065'

Log Measured From GL GL 1065'

Drilling Measured From GL GL 1065'

Date

05-30-2023

Run Number

One

Depth Driller

822.0

Depth Logger

811.6

Bottom Logged Interval

810.6

Top Log Interval

20.0

Fluid Level

Full

Type Fluid

Water

Density / Viscosity

NA

Salinity - PPM Cl

NA

Max Recorded Temp

NA

Estimated Cement Top

0.0

Equipment No.

107

Location

Osawatomi

Recorded By

Steve Wandisch

Witnessed By

Luke McFadden

BOREHOLE RECORD

FROM

TO

SIZE

WT.

FROM

TO

NO.

BIT

FROM

TO

One

10.75"

0.0

7.00"

18.0#

0.0

Two

6.25"

20.0

822.0

2.875'

6.5#

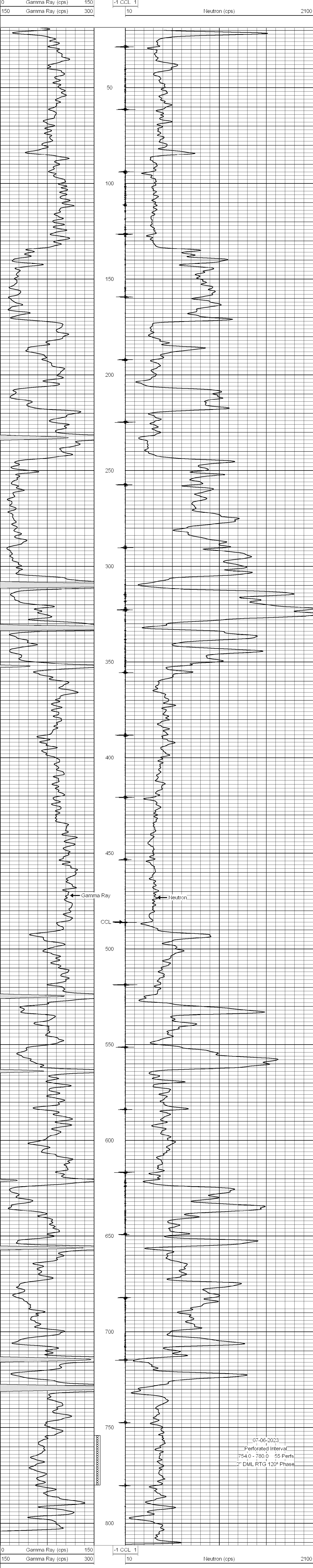
0.0

815.0

Comments

Drilling Contractor :
McFadden Oil Company

Database File: lorance 2a.db
Dataset Pathname: pass1
Presentation Format: gr-n-ccl
Dataset Creation: Fri Jun 30 10:14:18 2023 by Log SCH 111116
Charted by: Depth in Feet scaled 1:240



07-06-2023
Perforated Interval
754.0 - 780.0 55 Perfs
2" DML RTG 120° Phase