



**COMPENSATED
DENSITY/NEUTRON
PE LOG**

Company BIRD DOG OIL, LLC.
Well KELLER-GATES #3-17
Field KENILWORTH WEST
County STAFFORD
State KANSAS

Company BIRD DOG OIL, LLC.
Well KELLER-GATES #3-17
Field KENILWORTH WEST
County STAFFORD State KANSAS

Location: API #: 15-185-24133-0000
2305' FNL & 935' FEL
NE - SW - SE - NE
SEC 17 TWP 22S RGE 13W
Permanent Datum GROUND LEVEL Elevation 1907
Log Measured From KELLY BUSHING 8' A.G.L
Drilling Measured From KELLY BUSHING
Other Services DILMEL
Elevation
K.B. 1915
D.F. 1913
G.L. 1907

Date	2/22/23
Run Number	ONE
Depth Driller	3920
Depth Logger	3919
Bottom Logged Interval	3895
Top Log Interval	2900
Casing Driller	8 5/8 @ 482
Casing Logger	482
Bit Size	7 7/8
Type Fluid in Hole	CHEMICAL MUD
Density / Viscosity	9.0/59
pH / Fluid Loss	11.0/6.8
Source of Sample	FLOWLINE
Rm @ Meas. Temp	1.10 @ 75F
Rmf @ Meas. Temp	.825 @ 75F
Rmc @ Meas. Temp	1.32 @ 75F
Source of Rmf / Rmc	MEASUREMENT
Rm @ BHT	.717 @ 115F
Time Circulation Stopped	2 HOURS
Time Logger on Bottom	1:00 A.M.
Maximum Recorded Temperature	115F
Equipment Number	3802
Location	HAYS, KANSAS
Recorded By	COLE ROBBEN
Witnessed By	JEFF LAWLER

<<< Fold Here >>>

All interpretations are opinions based on inferences from electrical or other measurements and we cannot and do not guarantee the accuracy or correctness of any interpretation, and we shall not, except in the case of gross or willful negligence on our part, be liable or responsible for any loss, costs, damages, or expenses incurred or sustained by anyone resulting from any interpretation made by any of our officers, agents or employees. These interpretations are also subject to our general terms and conditions set out in our current Price Schedule.

Comments

THANK YOU FOR USING ELI WIRELINE SERVICES, HAYS, KS. (785) 628-6395

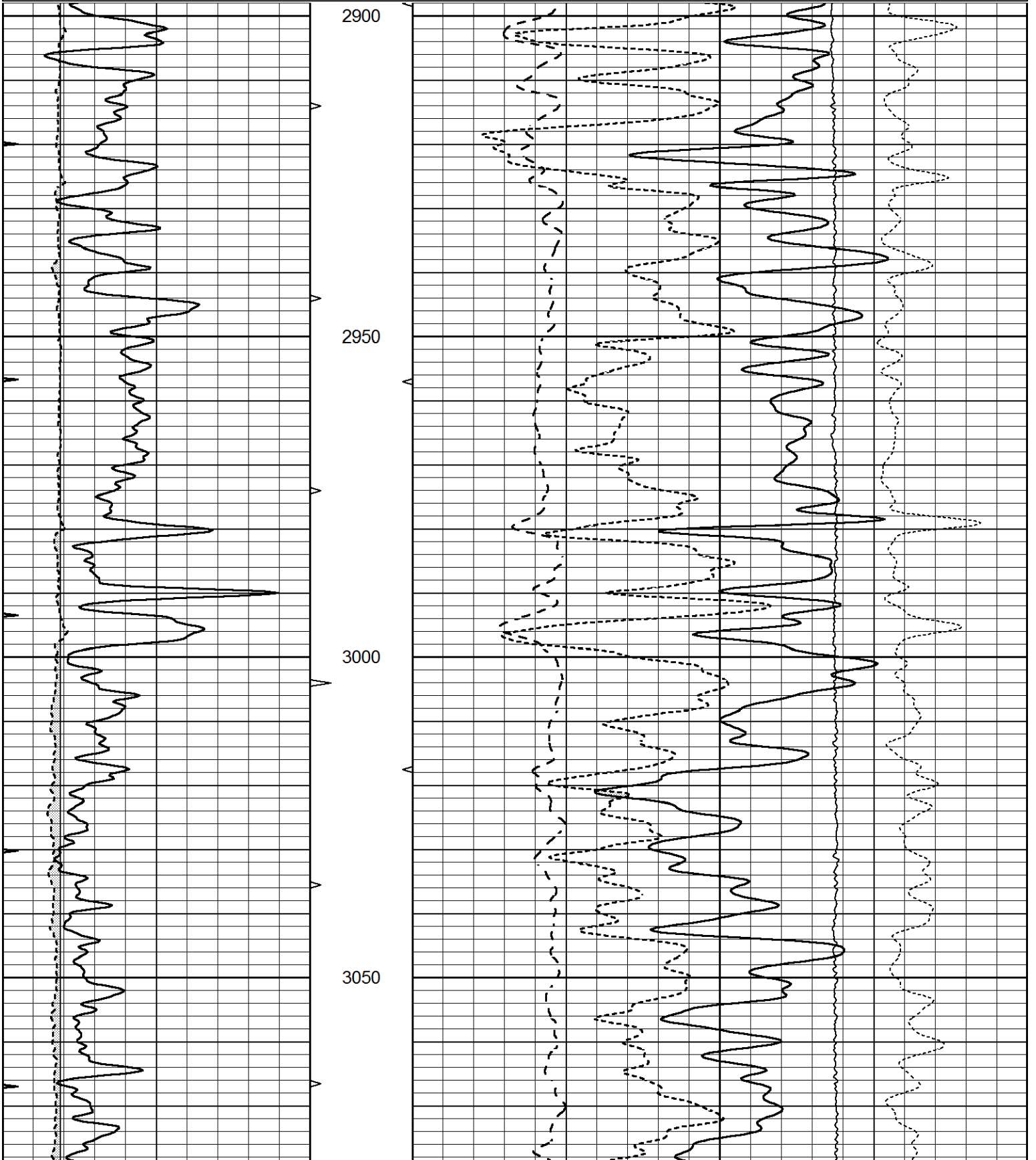
DIRECTIONS:
FROM 281/K-19 JUNCTION GO WEST ONE MILE, 1 1/2 MILES SOUTH, WEST INTO

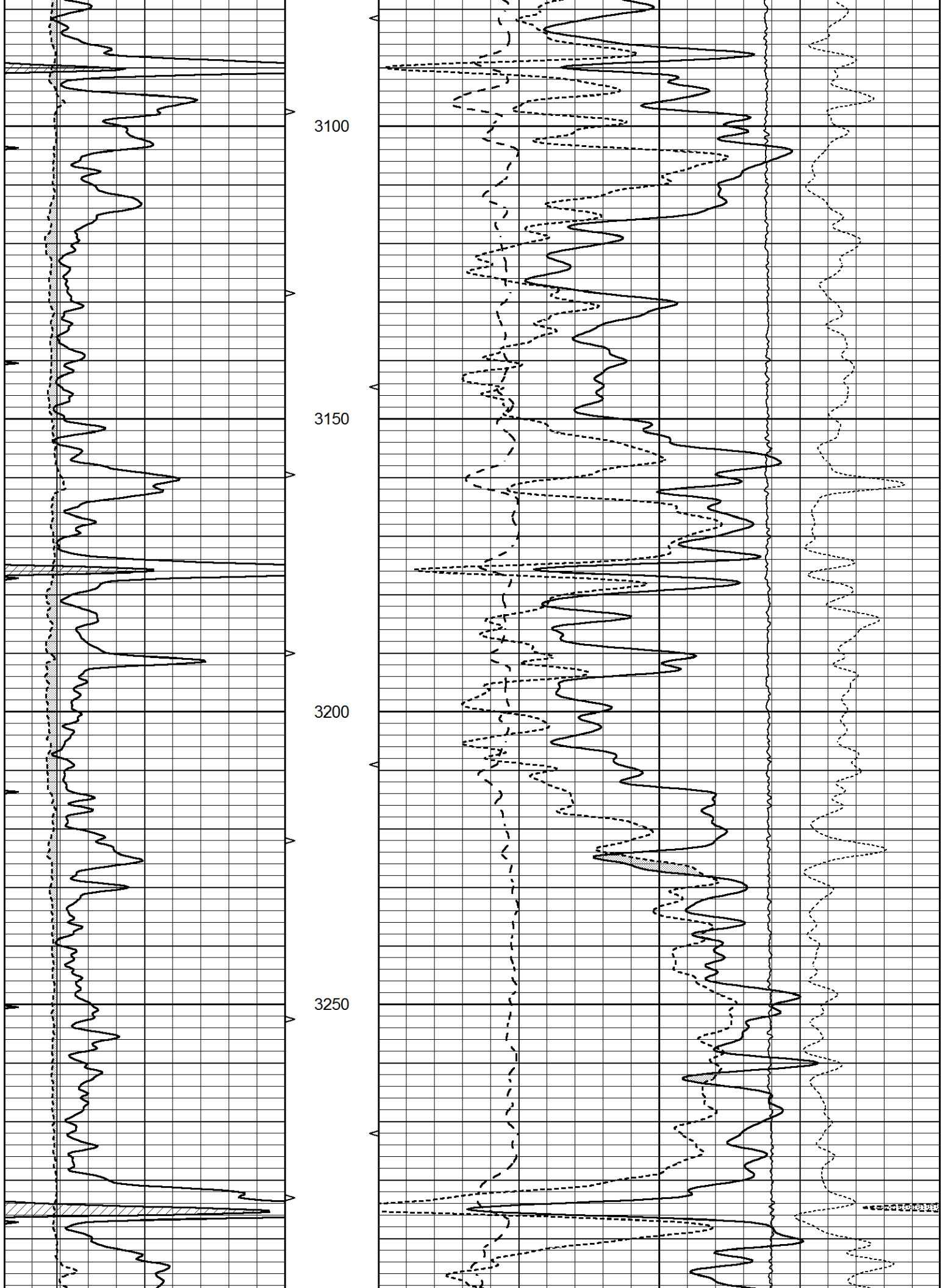


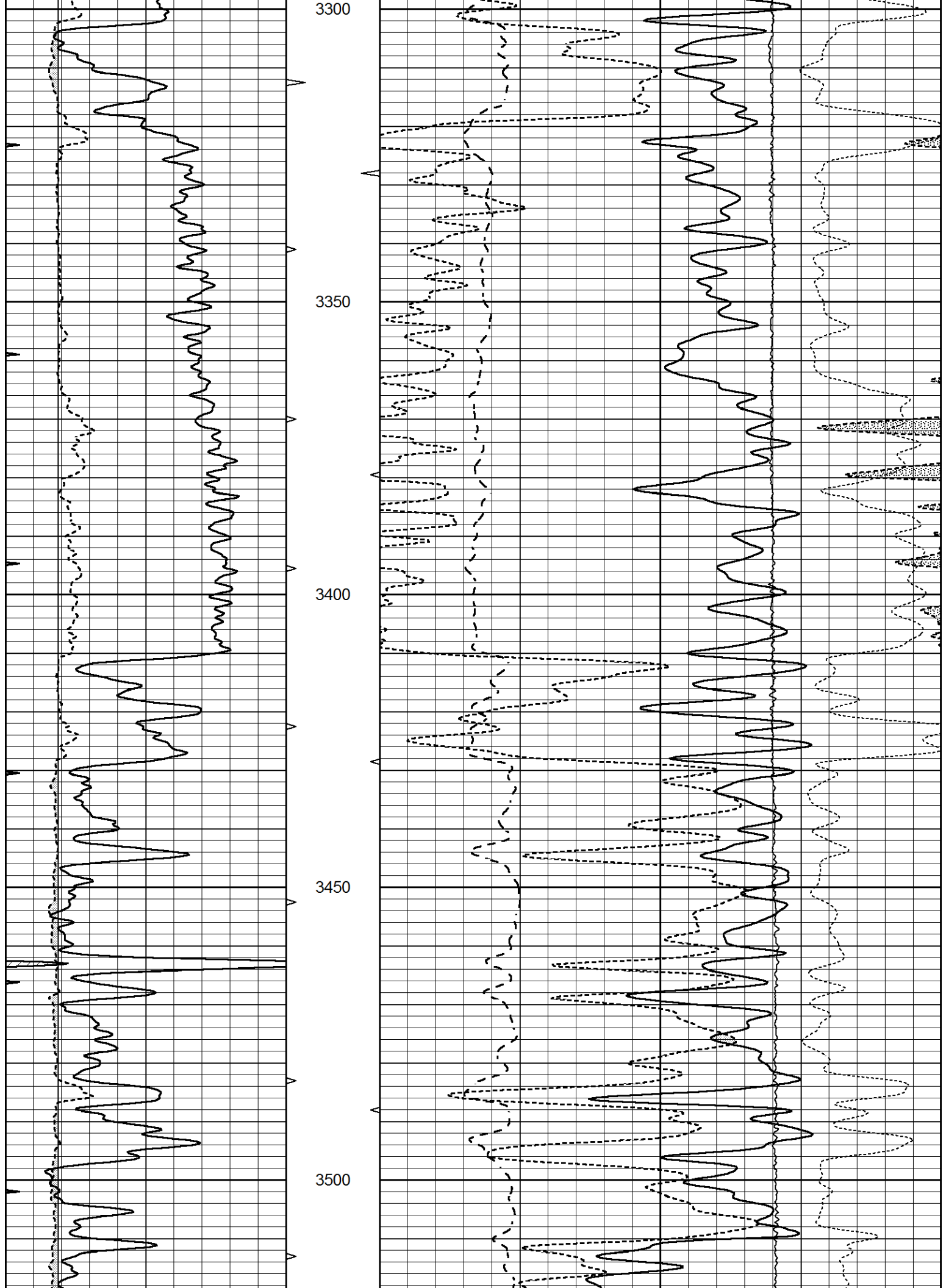
MAIN SECTION

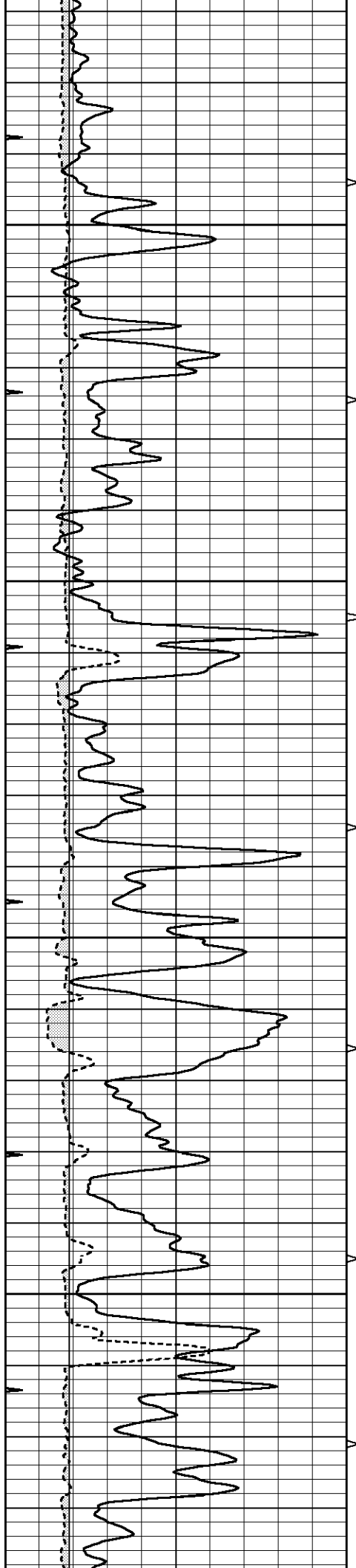
Database File 7548pe.db
 Dataset Pathname pass3POR
 Presentation Format _ldt_neu
 Dataset Creation Wed Feb 22 04:49:50 2023
 Charted by Depth in Feet scaled 1:240

0	GAMMA RAY (GAPI)	150	ABHV	30	COMPENSATED DENSITY (pu)			-10	
6	CALIPER (in)	16	10 (ft3)	0	COMPENSATED NEUTRON (pu)			-10	
0	MINMK	20	TBHV	0	PE	10	-0.25	CORRECTION (g/cc)	0.25
			0 (ft3)	10			0	LTEN (lb)	5000







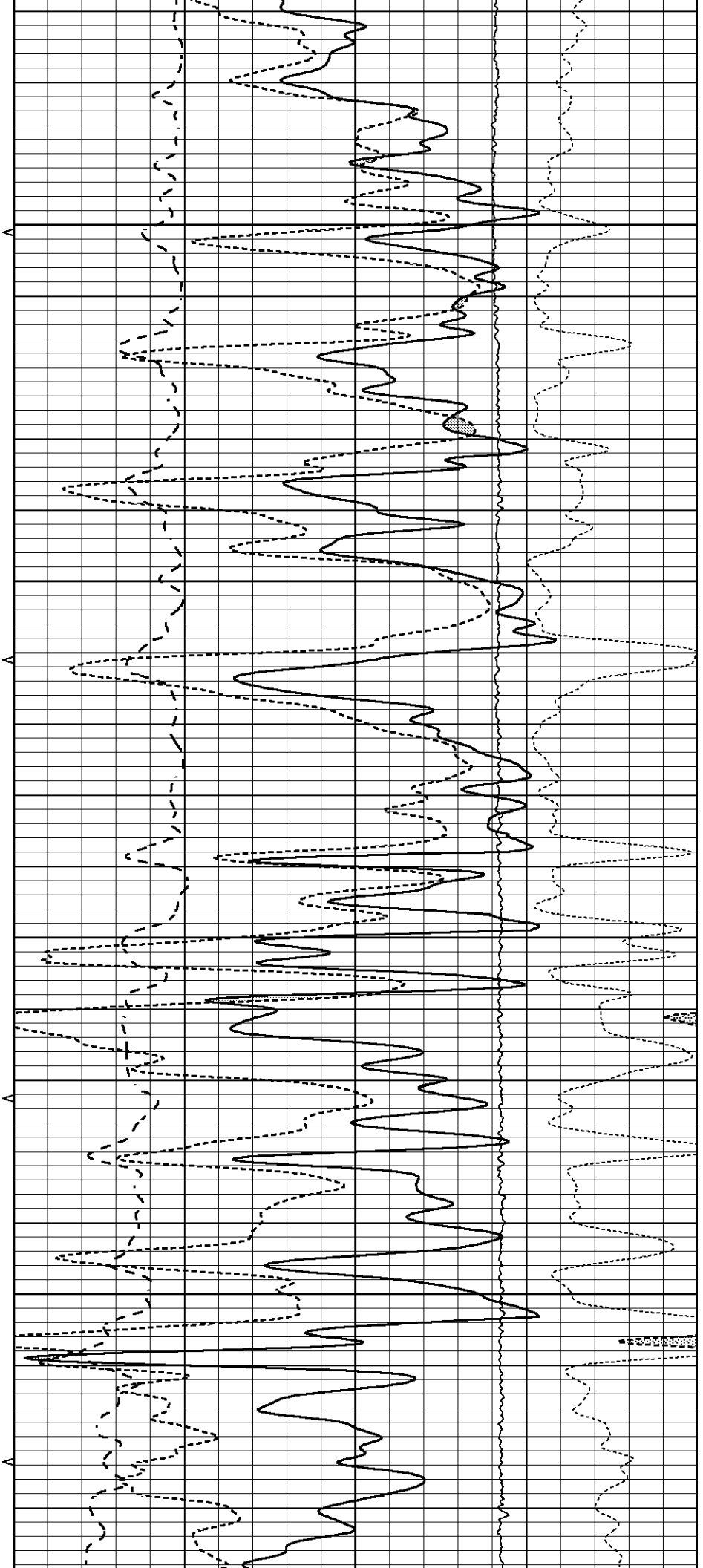


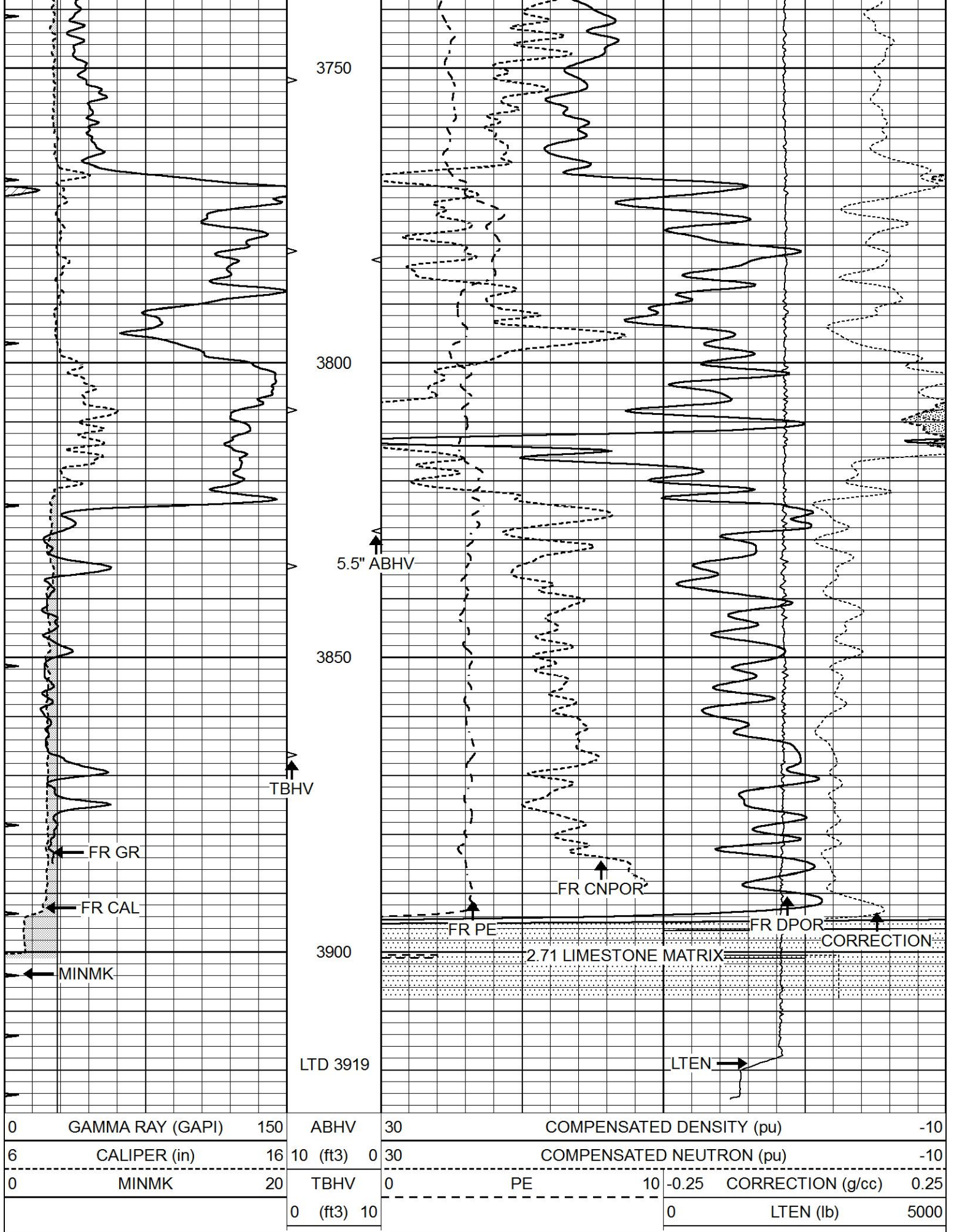
3550

3600

3650

3700



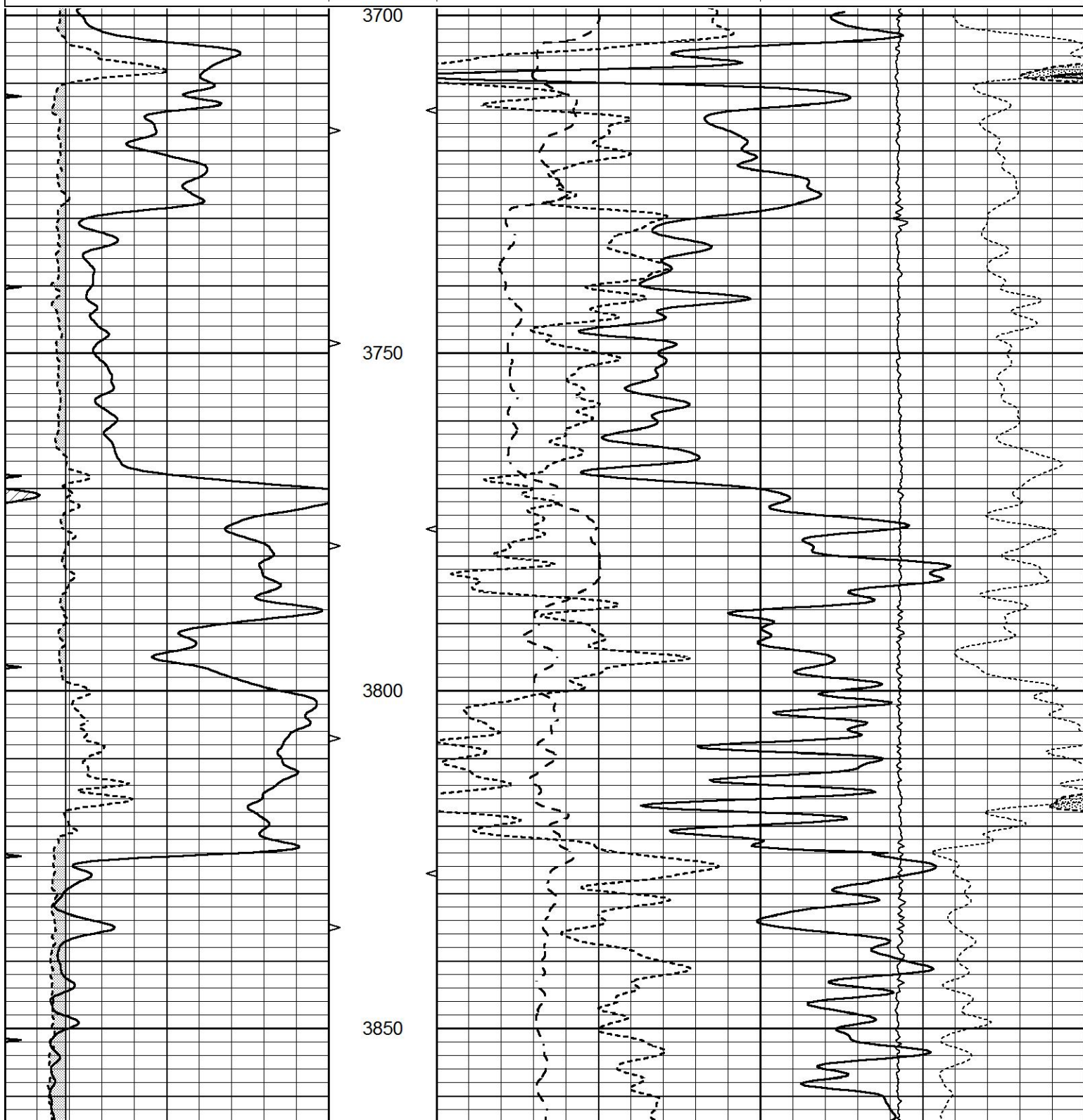


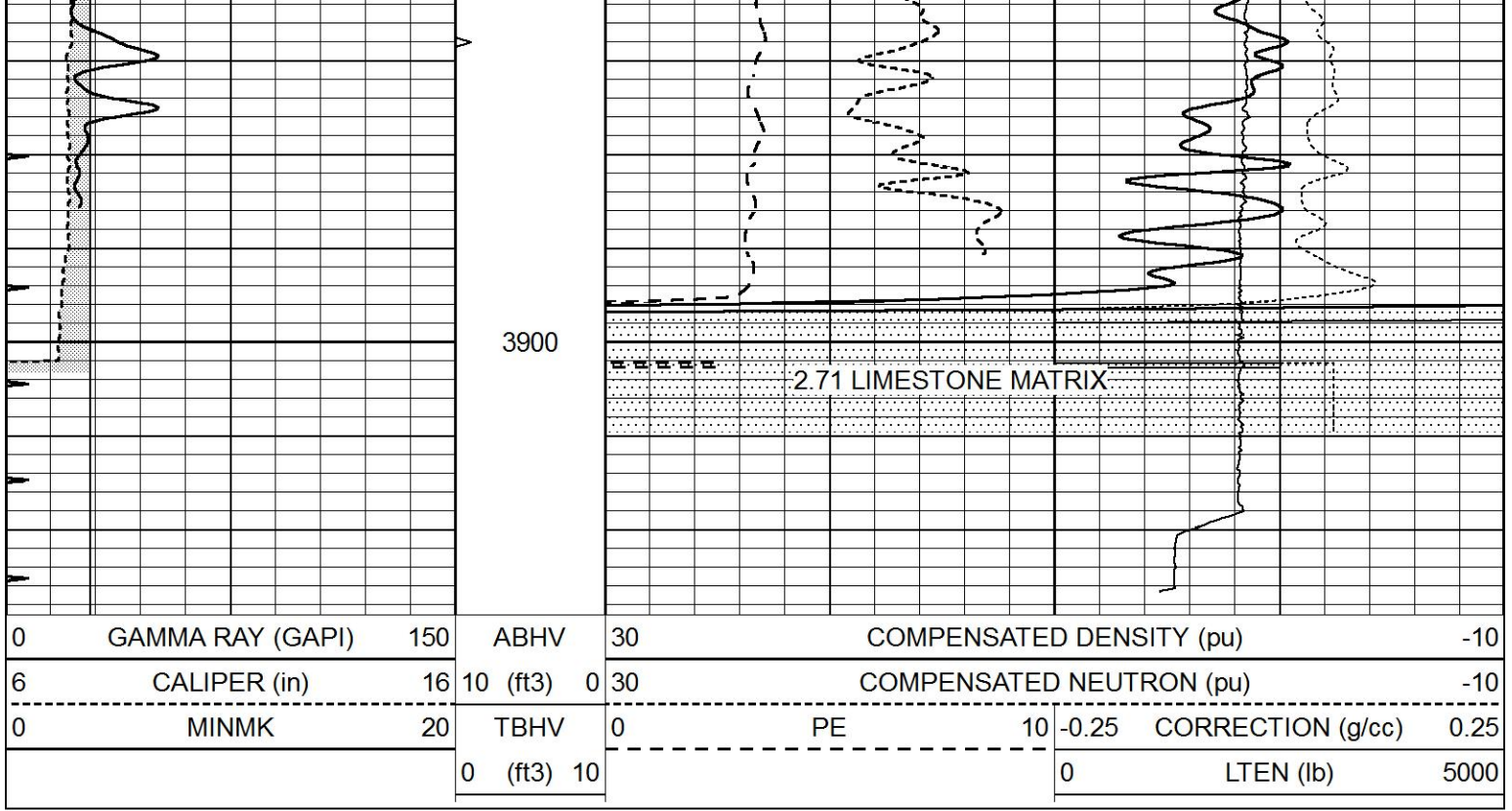


2.71 LIMESTONE REPEAT

Database File 7548pe.db
Dataset Pathname pass2LSR
Presentation Format _ldt_neu
Dataset Creation Wed Feb 22 01:43:45 2023
Charted by Depth in Feet scaled 1:240

0	GAMMA RAY (GAPI)	150	ABHV	30	COMPENSATED DENSITY (pu)	-10			
6	CALIPER (in)	16	10 (ft3)	0	30	COMPENSATED NEUTRON (pu)	-10		
0	MINMK	20	TBHV	0	PE	10	-0.25	CORRECTION (g/cc)	0.25
			0 (ft3)	10			0	LTEN (lb)	5000

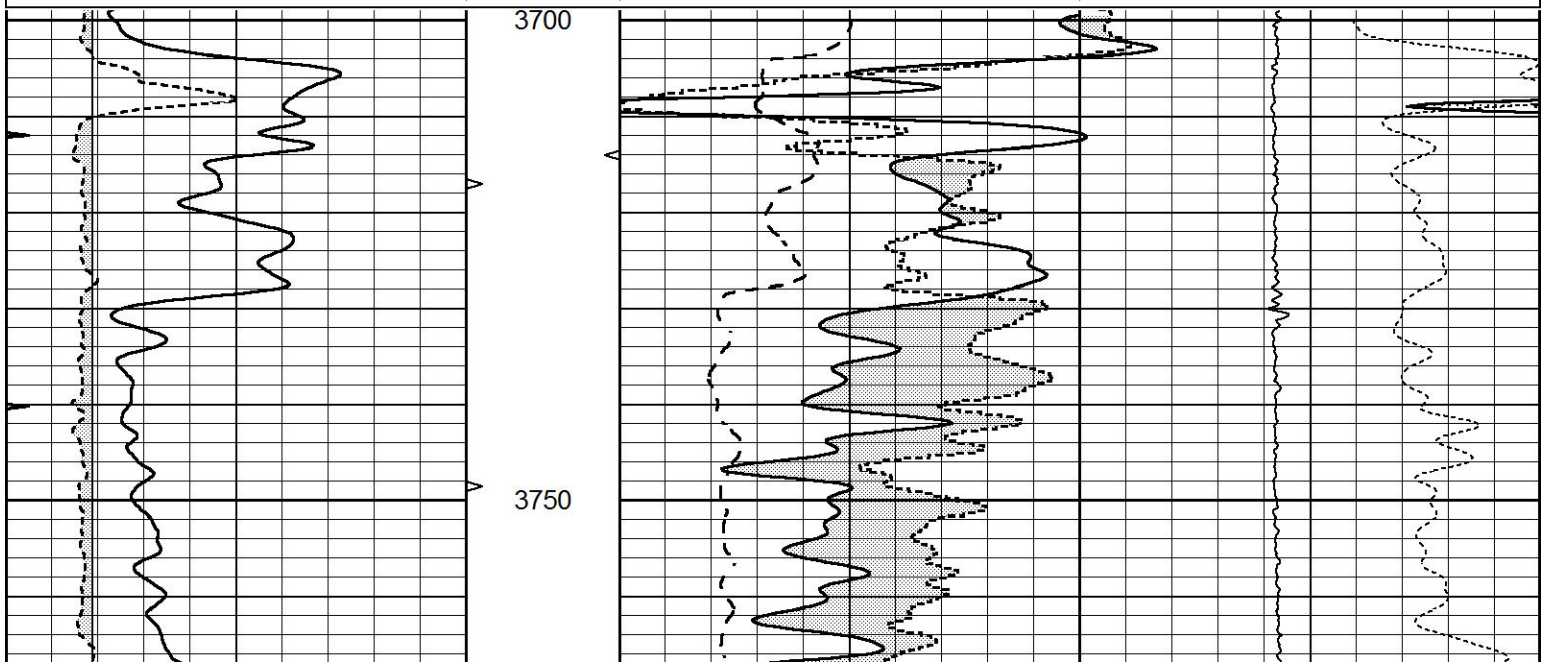


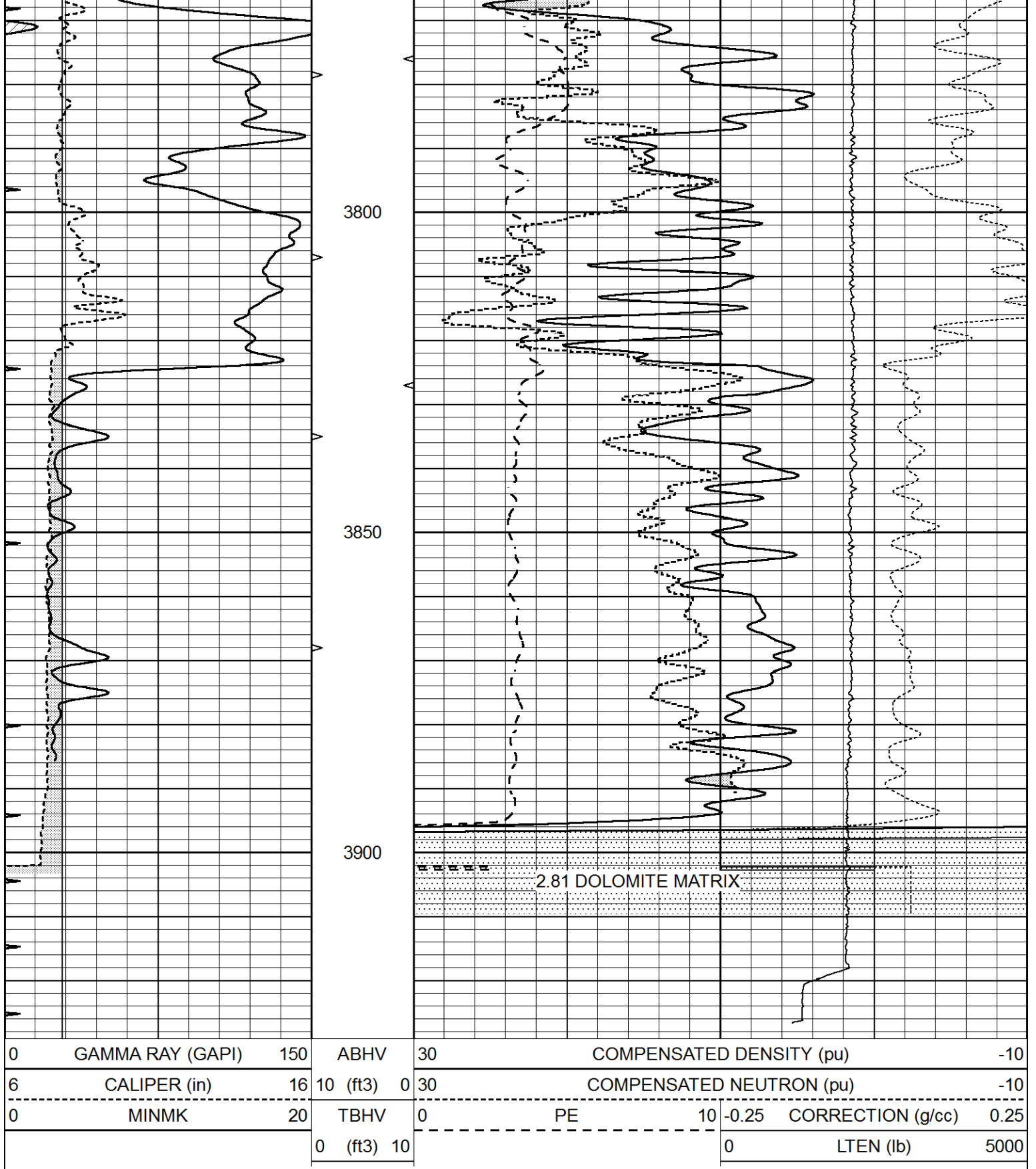


2.81 DOLOMITE REPEAT

Database File 7548pe.db
 Dataset Pathname pass2DOLO
 Presentation Format _ldt_neu
 Dataset Creation Wed Feb 22 02:02:40 2023
 Charted by Depth in Feet scaled 1:240

0	GAMMA RAY (GAPI)	150	ABHV	30	COMPENSATED DENSITY (pu)	-10
6	CALIPER (in)	16	10 (ft3)	0 30	COMPENSATED NEUTRON (pu)	-10
0	MINMK	20	TBHV	0	PE	10 -0.25 CORRECTION (g/cc) 0.25
			0 (ft3)	10		0 LTEN (lb) 5000





Calibration Report

Database File 7548pe.db
 Dataset Pathname pass3POR
 Dataset Creation Wed Feb 22 04:49:50 2023

Dual Induction Calibration Report

Serial-Model: FW1410-55-Probe
 Surface Cal Performed: Thu Jun 30 01:48:00 2022
 Dual Induction Calibration Report: Thu Feb 22 04:49:50 2023

Surface Calibration								
Readings				References			Results	
Loop:	Air	Loop		Air	Loop		m	b
Deep	0.011	0.656	V	1.000	400.000	mmho/m	650.000	-3.000
Medium	-0.000	0.731	V	1.000	464.000	mmho/m	632.856	-10.500
Internal:	Zero	Cal		Zero	Cal		m	b
Deep	0.007	0.649	V	0.000	400.000	mmho/m	623.784	-4.595
Medium	0.004	0.743	V	0.000	464.000	mmho/m	627.284	-2.251

Downhole Calibration								
Readings				References			Results	
	Zero	Cal		Zero	Cal		m'	b'
Deep	-0.824	395.917	mmho/m	-0.976	397.550	mmho/m	1.004	-0.149
Medium	3.565	471.327	mmho/m	3.468	471.590	mmho/m	1.001	-0.099
LL3		7.503	V		1500.000	Ohm-m		
		0.001	V		20.000	Ohm-m		
		-7.481	V		3745.000	mmho-m		

After Survey Verification								
Readings				Targets			Results	
	Zero	Cal		Zero	Cal		m'	b'
Deep	0.000	0.000	mmho/m	-0.824	395.917	mmho/m	1.000	0.000
Medium	0.000	0.000	mmho/m	3.565	471.327	mmho/m	1.000	0.000
LL3		0.000	Ohm-m		1500.000	Ohm-m		
		0.000	Ohm-m		20.000	Ohm-m		
		0.000	mmho-m		3745.000	mmho-m		

Litho Density Calibration Report
Serial: 140704
Model: V4_10P
Source Number: 74GBq-19

Master Calibration				Performed: Mon Jan 16 12:13:16 2023			
	Background	Aluminum		Magnesium			
Window 1	510.34	5430.90		23328.68		cps	
Window 2	43.13	1220.81		5782.94		cps	
Window 4	220.94	1221.84		5140.68		cps	
Window 5	541.58	7453.23		13730.42		cps	
Window 6	40.88	1109.92		2626.60		cps	
Window 8	256.72	2483.83		4003.08		cps	
Bulk Density	-	2.6020		1.6830		g/cc	
Pe	-	3.0000		2.5070		b/e	
LS Alpha:	: -1.8151	SS Alpha:	: -0.5949	LS CPE:		: 1.1494	
LS Beta:	: 115604.5658	SS Beta:	: 10827.9221	SS CPE:		: 1.7503	

Before Survey Background Counts Verification			Performed: Wed Dec 31 18:00:00 1969		
Window 1	0.00	cps			
Window 2	0.00	cps			
Window 4	0.00	cps			
Window 5	0.00	cps			

Window 6	0.00	cps
Window 8	0.00	cps
After Survey Background Counts Verification		
Performed: Wed Dec 31 18:00:00 1969		
Window 1	0.00	cps
Window 2	0.00	cps
Window 4	0.00	cps
Window 5	0.00	cps
Window 6	0.00	cps
Window 8	0.00	cps

Lithodensity Caliper Calibration				Performed: Mon Jan 16 12:13:16 2023	
Results	Readings		References (in)		
Low	High	Low	High	Gain	Offset
7710.6	11244.4	8.0	14.0	0.0	-6.5

Before Survey Caliper Verification			Performed:		
	Reference	Reading			
Caliper (in)	_____	_____			

After Survey Caliper Verification			Performed:		
	Reference	Reading			
Caliper (in)	_____	_____			

Compensated Neutron Calibration Report

Serial Number:	080621PMC
Tool Model:	NABORS

PRE-SURVEY VERIFICATION				
Detector	Readings	Measured	Target	
Short Space	cps			
Long Space	cps	pu		pu

POST-SURVEY VERIFICATION				
Detector	Readings	Measured	Target	
Short Space	cps			
Long Space	cps	pu		pu

Gamma Ray Calibration Report

Serial Number:	7
Tool Model:	Probe1
Performed:	Wed Feb 15 09:34:11 2023
Calibrator Value:	1.0 GAPI
Background Reading:	0.0 cps
Calibrator Reading:	1.0 cps
Sensitivity:	0.5000 GAPI/cps

