

MICRO
LOG



Company BIRD DOG OIL, LLC.
Well KELLER-GATES #3-17
Field KENILWORTH WEST
County STAFFORD State KANSAS

Location: API #: 15-185-24133-0000
2305' FNL & 935' FEL
NE - SW - SE - NE
SEC 17 TWP 22S RGE 13W
Permanent Datum GROUND LEVEL Elevation 1907
Log Measured From KELLY BUSHING 8' A.G.L
Drilling Measured From KELLY BUSHING
Other Services
CDL/CNL
PE/DIL
Elevation
K.B. 1915
D.F. 1913
G.L. 1907

Date	2/22/23		
Run Number	TWO		
Depth Driller	3920		
Depth Logger	3919		
Bottom Logged Interval	3917		
Top Log Interval	2900		
Casing Driller	8 5/8 @ 482		
Casing Logger	482		
Bit Size	7 7/8		
Type Fluid in Hole	CHEMICAL MUD	CHLORIDES 5,500 PPM	
Density / Viscosity	9.0/59		
pH / Fluid Loss	11.0/6.8		
Source of Sample	FLOWLINE		
Rm @ Meas. Temp	1.10 @ 75F		
Rmf @ Meas. Temp	.825 @ 75F		
Rmc @ Meas. Temp	1.32 @ 75F		
Source of Rmf / Rmc	MEASUREMENT		
Rm @ BHT	.717 @ 115F		
Time Circulation Stopped	4 HOURS		
Time Logger on Bottom	3:00 A.M.		
Maximum Recorded Temperature	115F		
Equipment Number	3802		
Location	HAYS, KANSAS		
Recorded By	COLE ROBBEN		
Witnessed By	JEFF LAWLER		

<<< Fold Here >>>

All interpretations are opinions based on inferences from electrical or other measurements and we cannot and do not guarantee the accuracy or correctness of any interpretation, and we shall not, except in the case of gross or willful negligence on our part, be liable or responsible for any loss, costs, damages, or expenses incurred or sustained by anyone resulting from any interpretation made by any of our officers, agents or employees. These interpretations are also subject to our general terms and conditions set out in our current Price Schedule.

Comments

THANK YOU FOR USING ELI WIRELINE SERVICES, HAYS, KS. (785) 628-6395

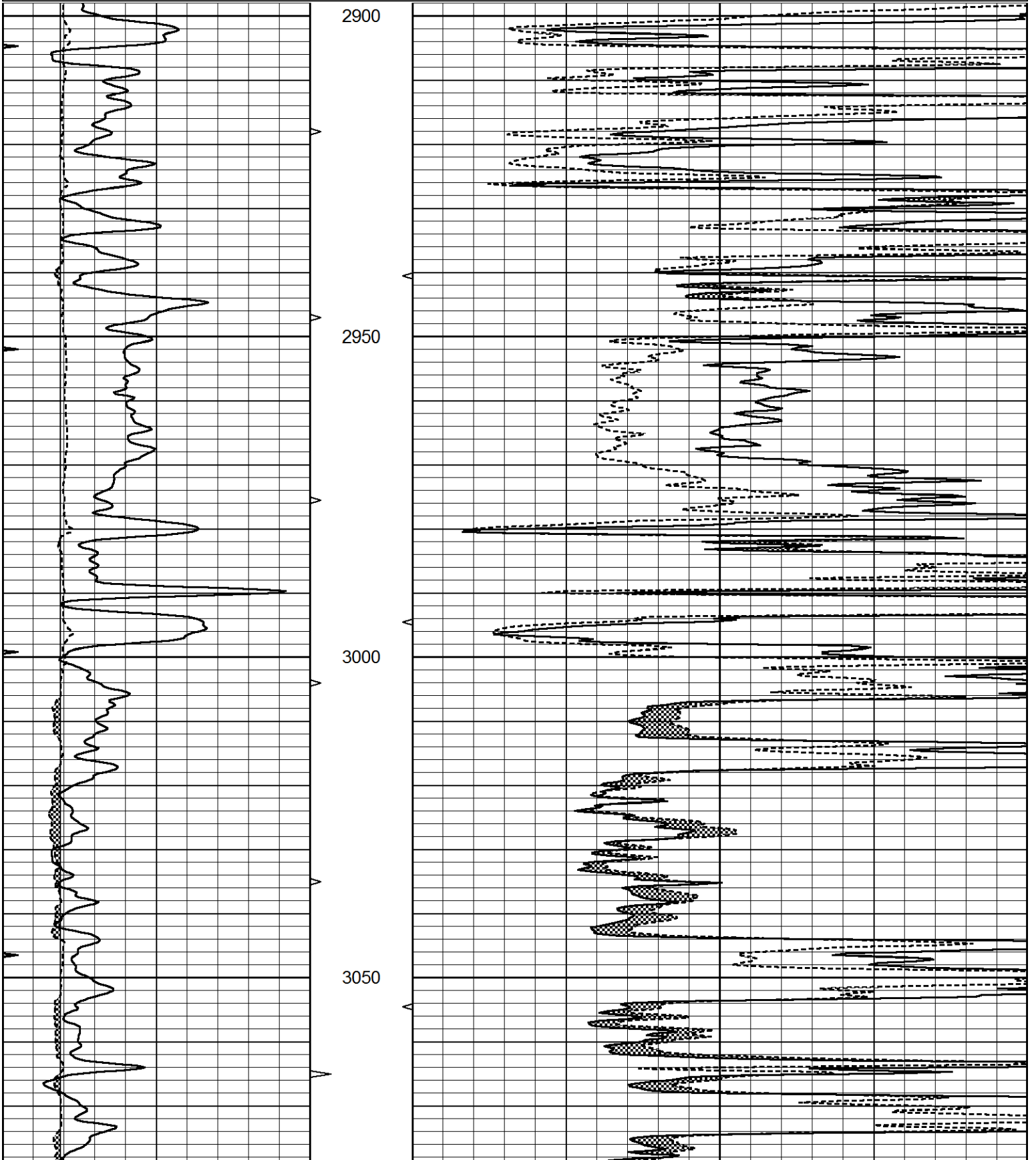
DIRECTIONS:
FROM 281/K-19 JUNCTION GO WEST ONE MILE, 1 1/2 MILES SOUTH, WEST INTO

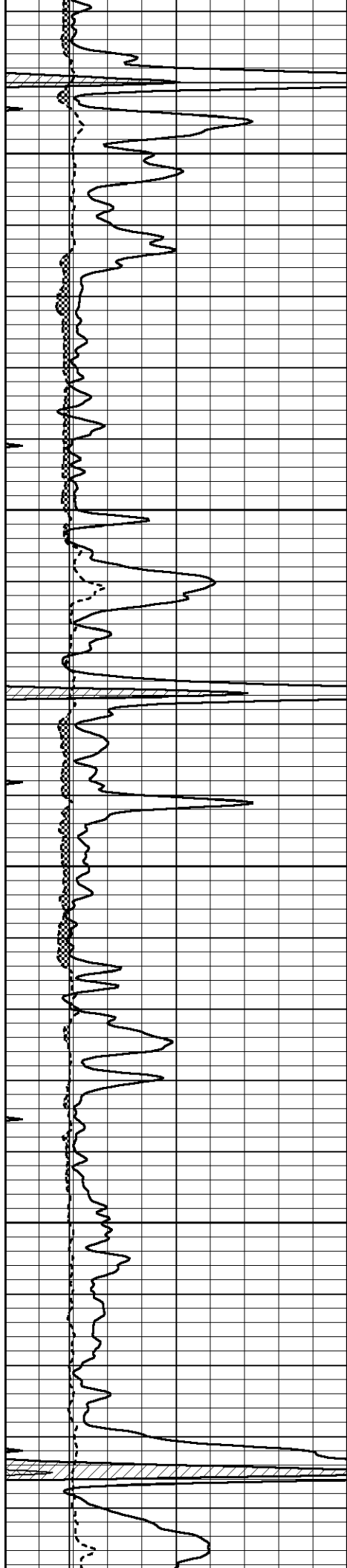


MAIN SECTION

Database File 7548pe.db
 Dataset Pathname pass9DT
 Presentation Format _micro
 Dataset Creation Wed Feb 22 05:13:28 2023
 Charted by Depth in Feet scaled 1:240

0	GAMMA RAY (GAPI)	150	ABHV	0	MEL1.5 (Ohm-m)	40
6	CALIPER (in)	16	10 (ft3)	0	MEL2.0 (Ohm-m)	40
0	MINMK	20	TBHV			
			0 (ft3)	10		



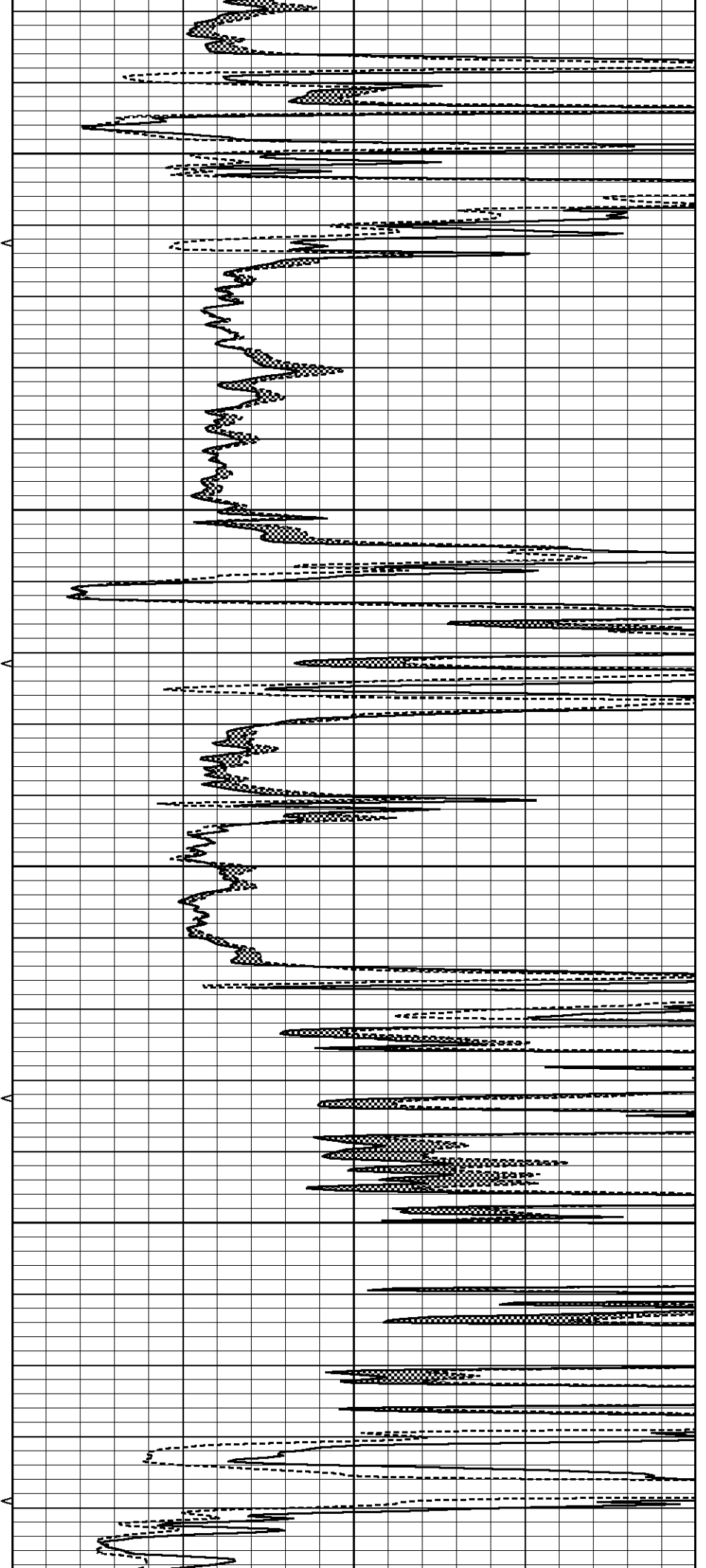


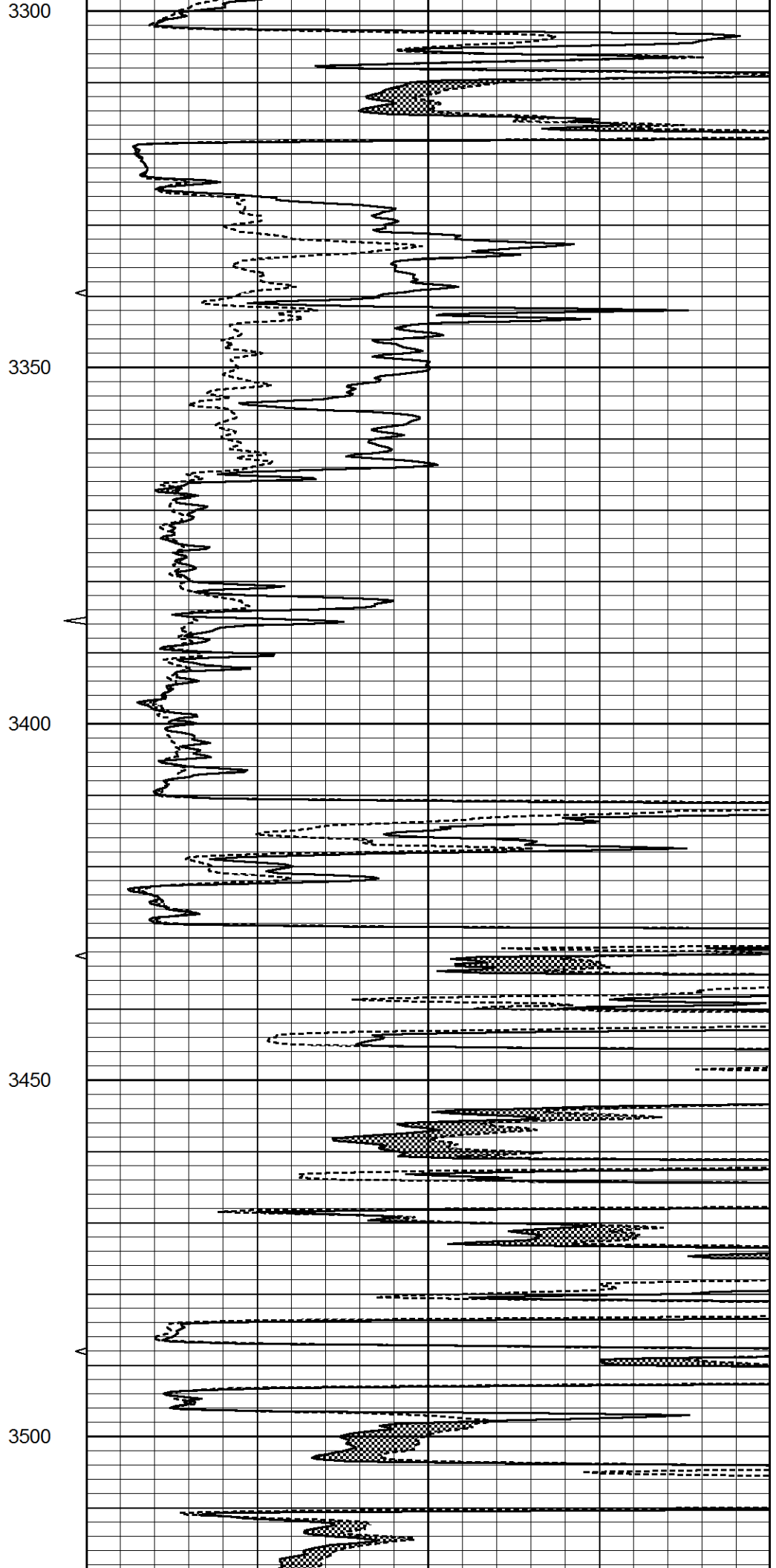
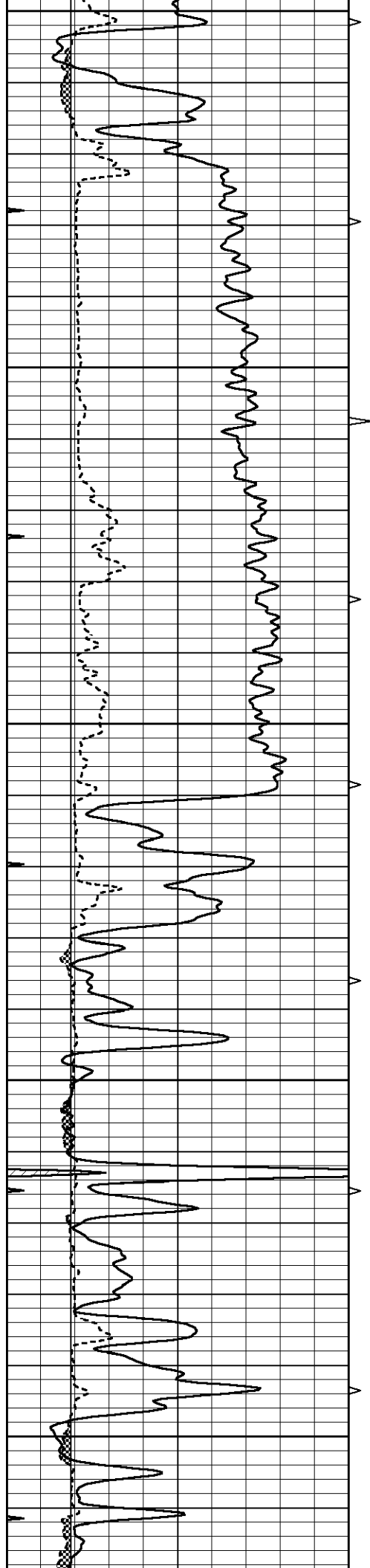
3100

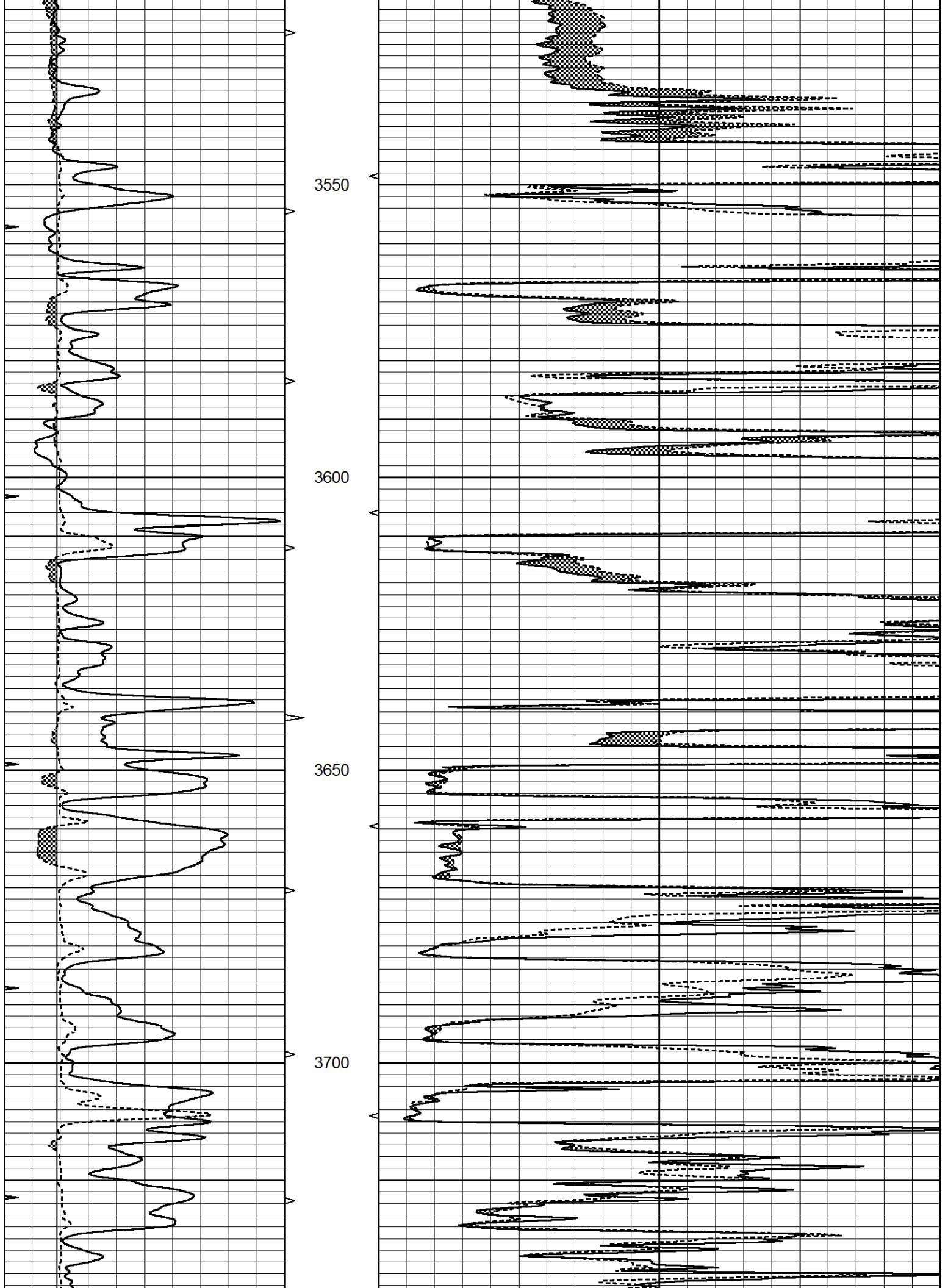
3150

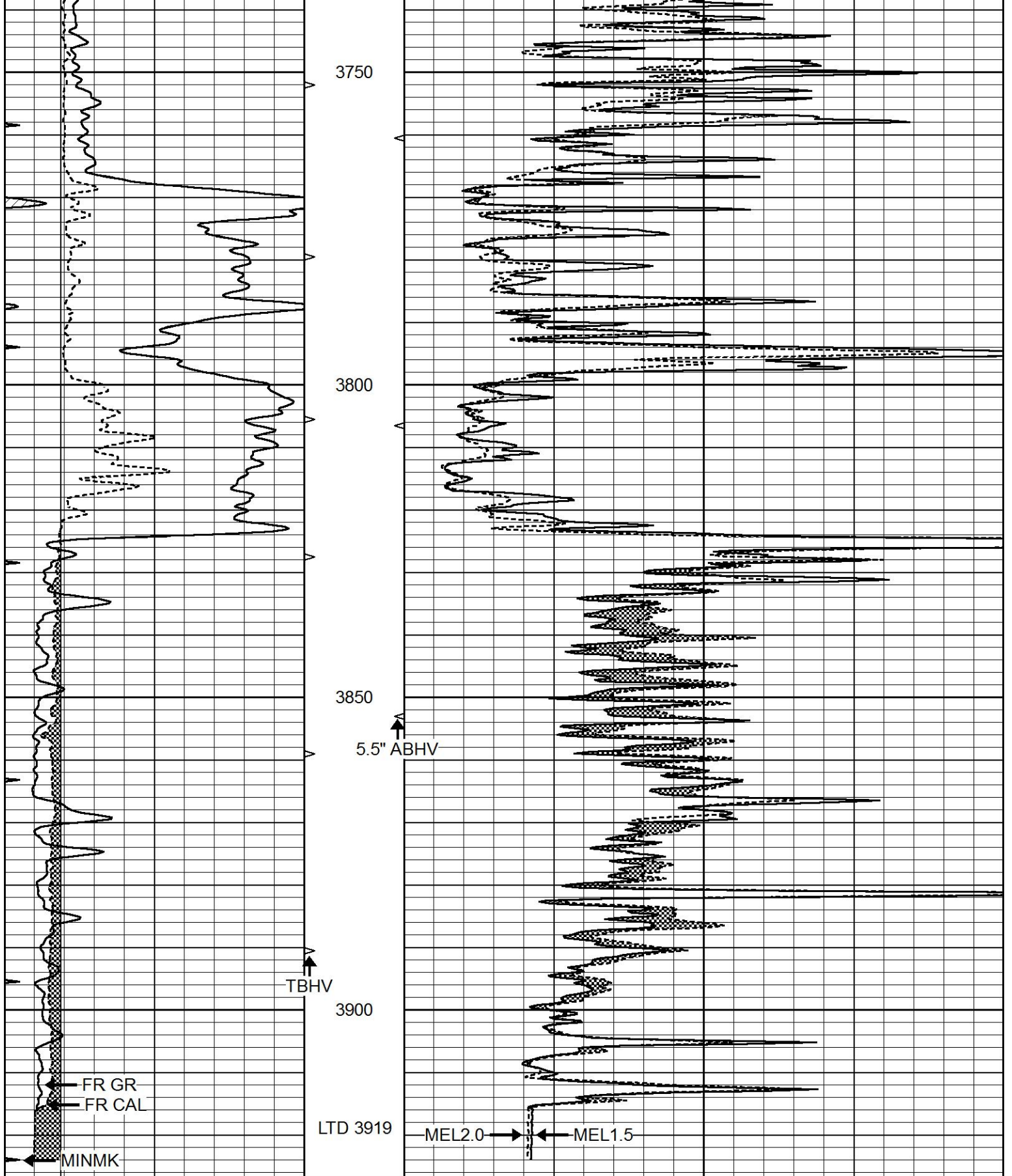
3200

3250









0	GAMMA RAY (GAPI)	150	ABHV	0	MEL1.5 (Ohm-m)	40
6	CALIPER (in)	16	10 (ft3)	0	MEL2.0 (Ohm-m)	40
0	MINMK	20	TBHV			
			0 (ft3)	10		

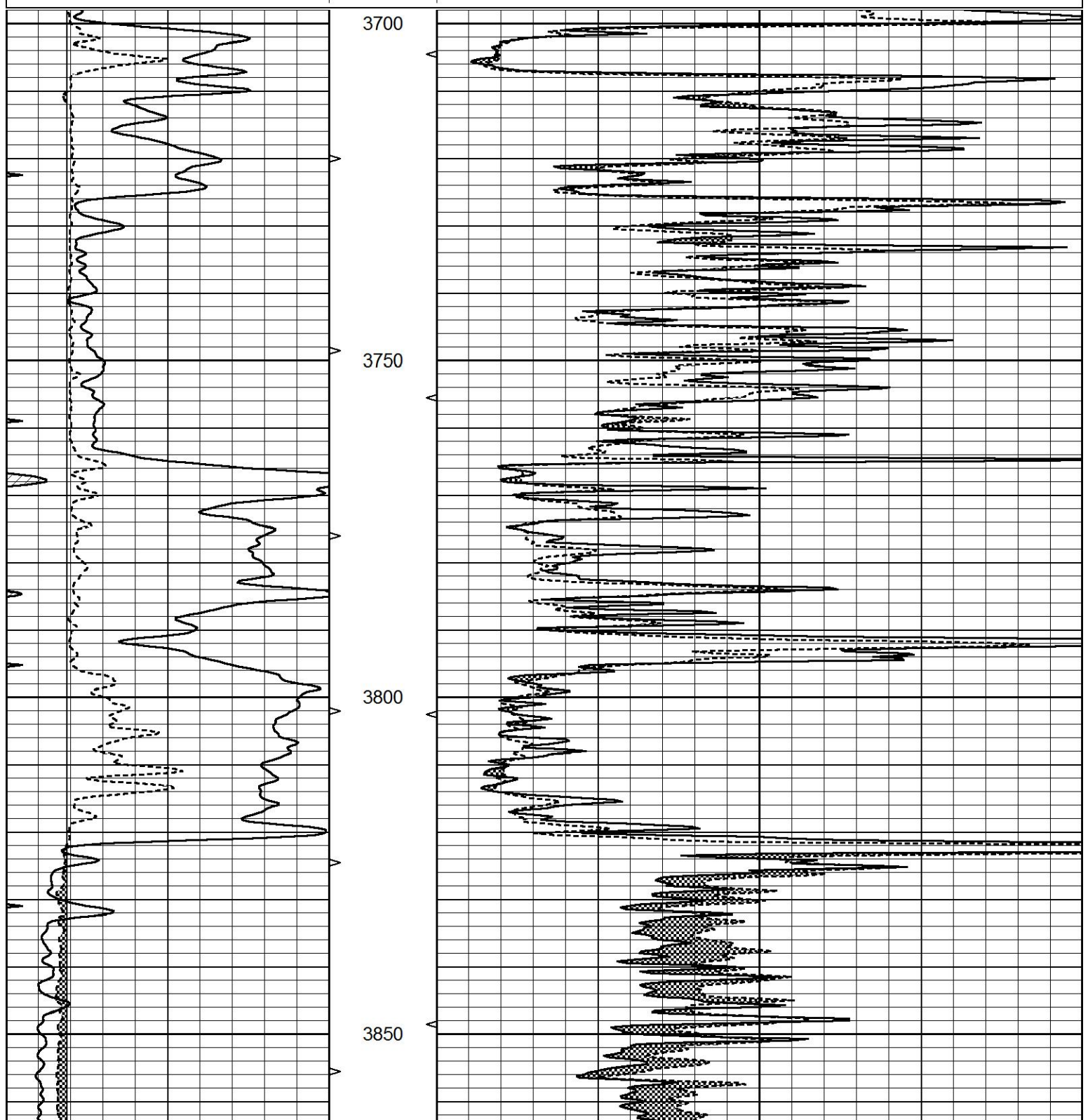


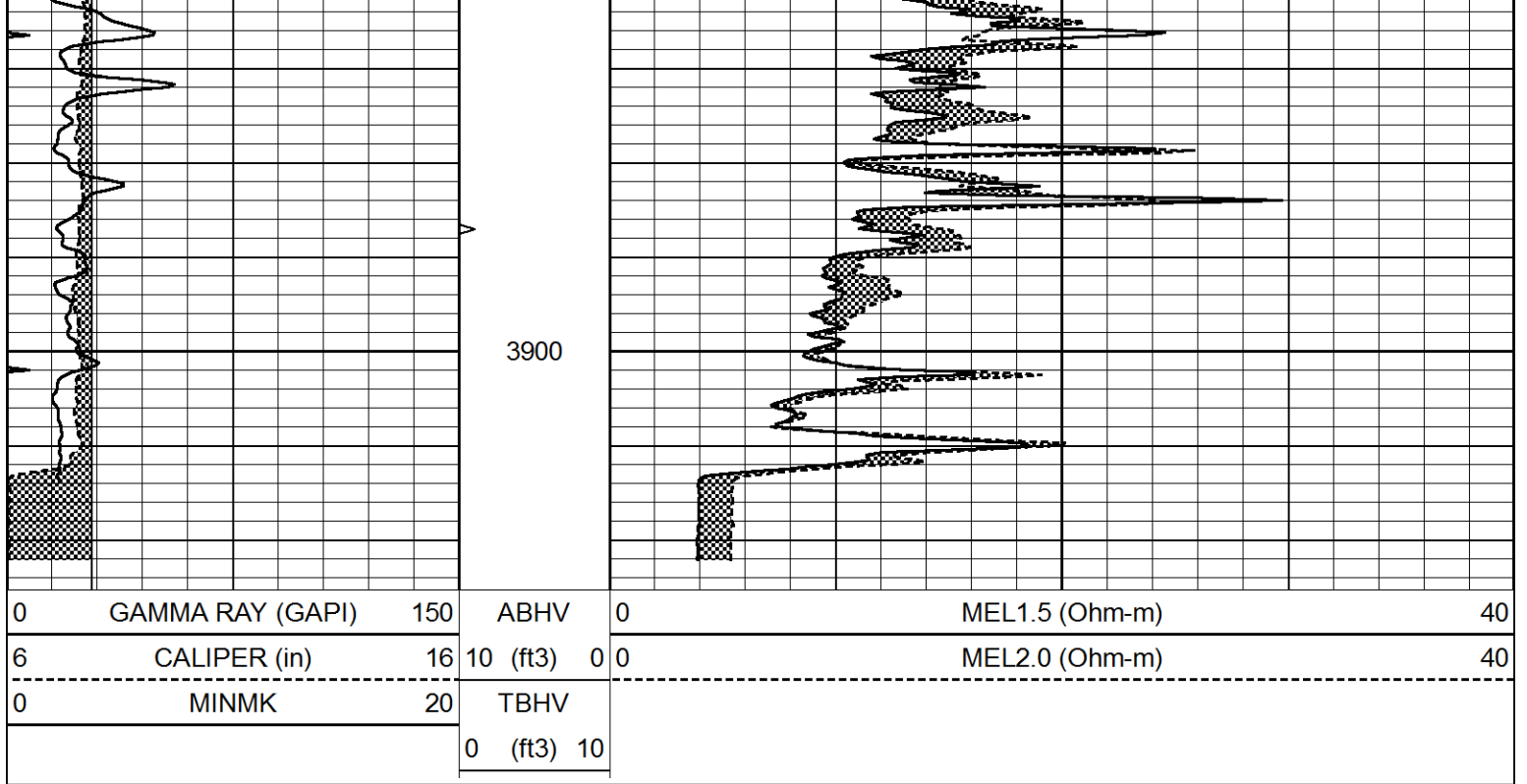


REPEAT SECTION

Database File 7548pe.db
Dataset Pathname pass8.1
Presentation Format _micro
Dataset Creation Wed Feb 22 05:15:45 2023
Charted by Depth in Feet scaled 1:240

0	GAMMA RAY (GAPI)	150	ABHV	0	MEL1.5 (Ohm-m)	40
6	CALIPER (in)	16	10 (ft3)	0 0	MEL2.0 (Ohm-m)	40
0	MINMK	20	TBHV			
			0 (ft3)	10		





Calibration Report

Database File 7548pe.db
 Dataset Pathname pass9DT
 Dataset Creation Wed Feb 22 05:13:28 2023

MICRO_USR Calibration Report

Serial Number: 070911
 Tool Model: ProbeL
 Performed: Thu Jan 19 05:57:00 2023

Caliper Calibration: Gain=4.500 Offset=0.330

References	Low Cal	High Cal
Readings	8.000	14.000
	1.451	3.049

1.5" Calibration: Gain=60.000 Offset=-0.500

References	Low Cal	High Cal
Readings	0.000	20.000
	0.004	0.843

2" Calibration: Gain=60.000 Offset=0.000

References	Low Cal	High Cal
Readings	0.000	20.000
	0.021	0.810

Microlog Calibration Report

Serial-Model: 070911-ProbeL
 Performed: Sat May 14 04:48:25 2022

	Readings			References			Results	
	Zero	Cal		Zero	Cal		m	b
Normal	0.0002	0.4836	V	0.0000	10.0000	Ohm-m	20.6908	-0.0051
Inverse	0.0018	0.6297	V	0.0000	10.0000	Ohm-m	15.9263	-0.0282
Caliper	0.0000	1.0000	V	0.0000	1.0000	in	1.0000	0.0000

Gamma Ray Calibration Report

Serial Number:	070558	
Tool Model:	Probe1	
Performed:	Wed Feb 15 11:12:38 2023	
Calibrator Value:	1.0	GAPI
Background Reading:	0.0	cps
Calibrator Reading:	1.0	cps
Sensitivity:	0.2500	GAPI/cps