



**CEMENT
BOND LOG**

Company QUAIL OIL & GAS, LC
 Well ELLIOT # 1
 Field MAVID
 County GRAHAM
 State KANSAS

Company QUAIL OIL & GAS, LC
 Well ELLIOT # 1
 Field MAVID
 County GRAHAM State KANSAS

Location: API #: 15-065-24245-0000
 1180' FNL
 & 335' FWL
 Permanent Datum GROUND LEVEL Elevation 2290
 Log Measured From KELLY BUSHING 5' AGL
 Drilling Measured From KELLY BUSHING
 Elevation
 K.B. 2295
 D.F. 2293
 G.L. 2290

Date 6/8/23
 Run Number ONE
 Depth Driller 4124
 Depth Logger 4065
 Bottom Logged Interval 4063'
 Top Log Interval 0'
 Open Hole Size 7 5/8
 Type Fluid WATER
 Density / Viscosity ///
 Max. Recorded Temp. ///
 Estimated Cement Top TOP
 Time Well Ready 8:00 AM
 Time Logger on Bottom 8:30 AM
 Equipment Number T118
 Location HAYS KS
 Recorded By DANNY LEIKER
 Witnessed By DARREN PATTERSON

Borehole Record				Tubing Record			
Run Number	Bit	From	To	Size	Weight	From	To
Casing Record							
Surface String	8 5/8			23#		0'	Bottom 261'
Prot. String	5.5			15.5		0'	
Production String							
Liner							

<<< Fold Here >>>

All interpretations are opinions based on inferences from electrical or other measurements and we cannot and do not guarantee the accuracy or correctness of any interpretation, and we shall not, except in the case of gross or willful negligence on our part, be liable or responsible for any loss, costs, damages, or expenses incurred or sustained by anyone resulting from any interpretation made by any of our officers, agents or employees. These interpretations are also subject to our general terms and conditions set out in our current Price Schedule.

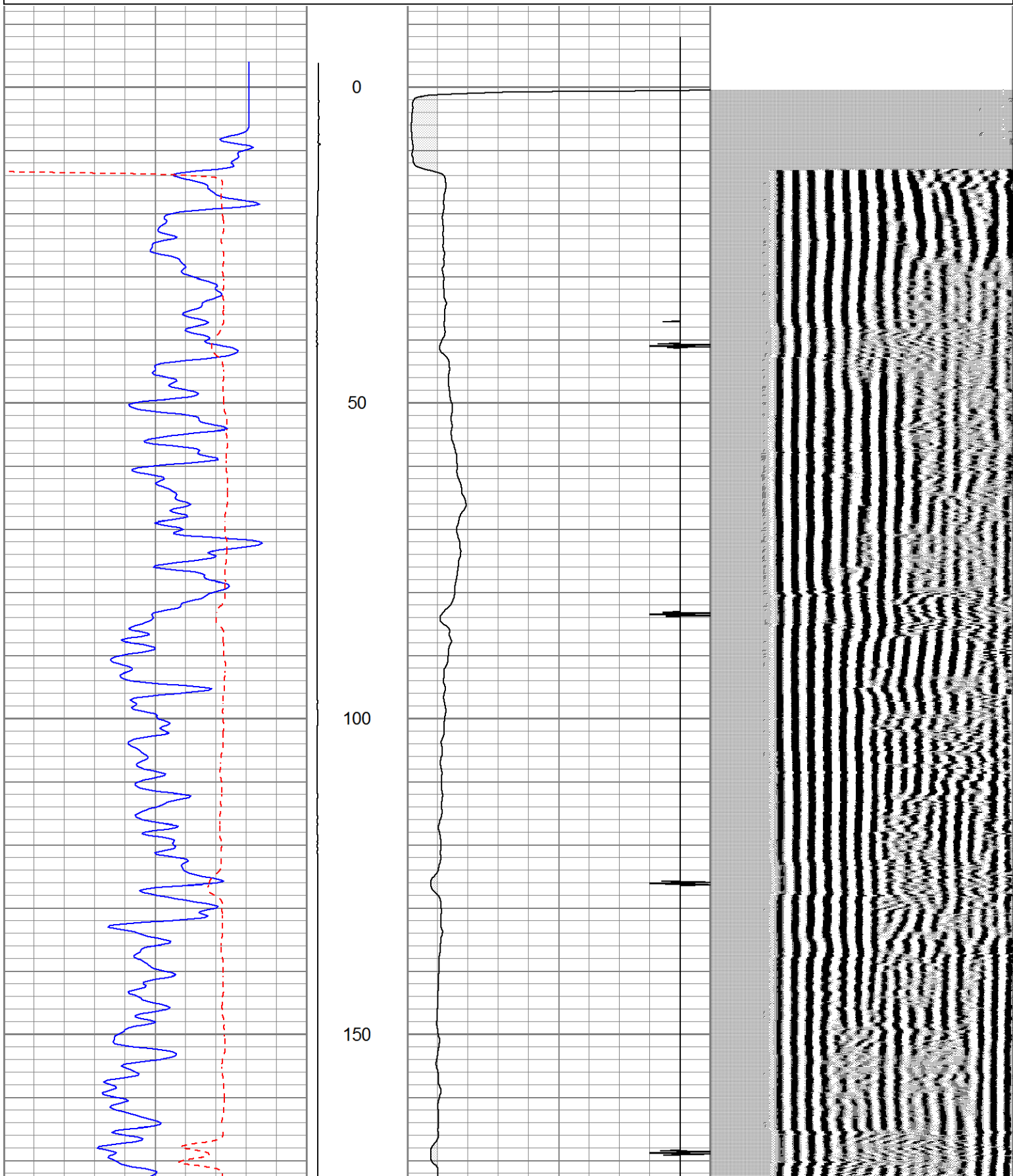
Comments

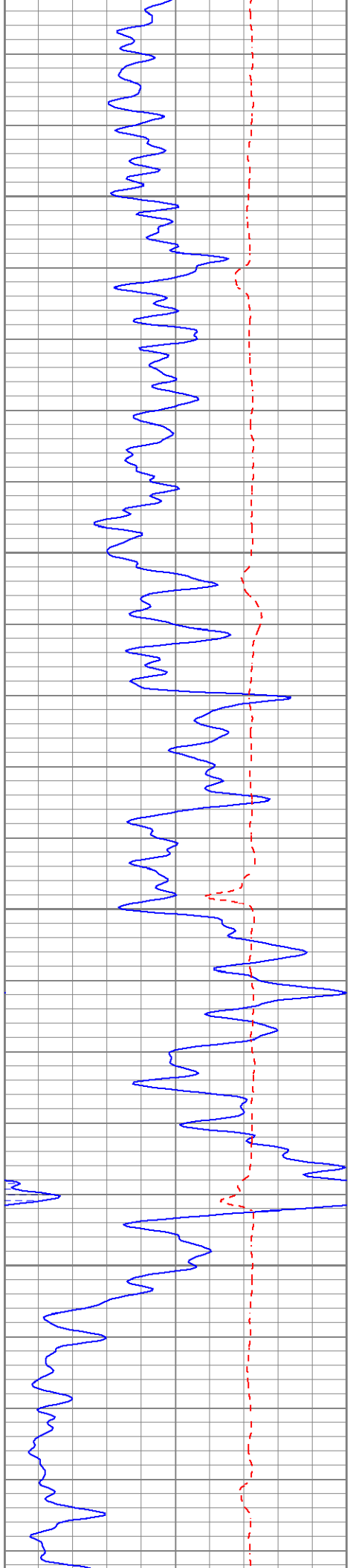


MAIN PASS

Database File quailoilandgascelllott1.db
 Dataset Pathname pass5
 Presentation Format cblsec
 Dataset Creation Thu Jun 08 10:12:25 2023
 Charted by Depth in Feet scaled 1:240

0	GR (GAPI)	150	LTEN	18	CCL	-2	200	VDL (usec)	1200
150	GR (GAPI)	300	(lb)	0	AMP3 (mV)	100			
450	TT3 (usec)	250	-100 2100						



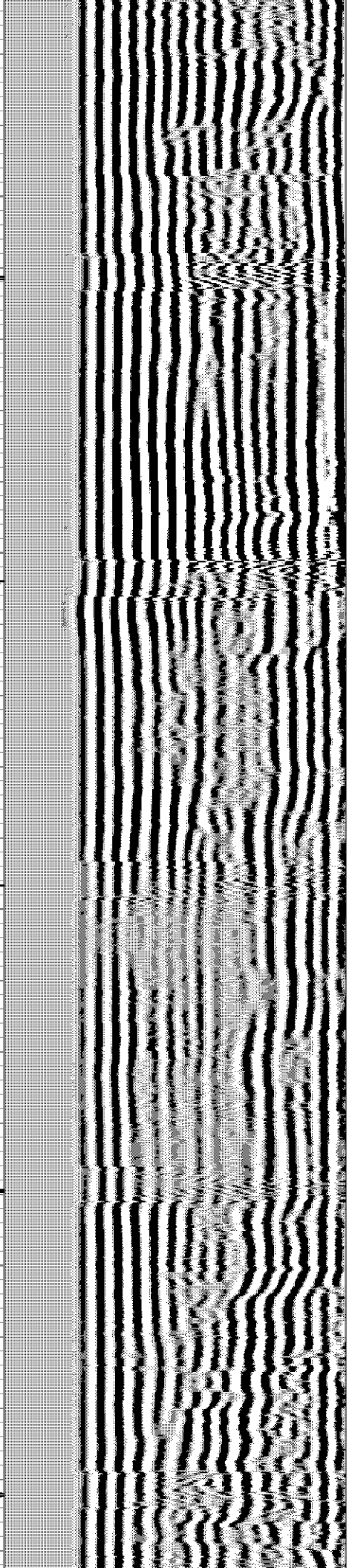
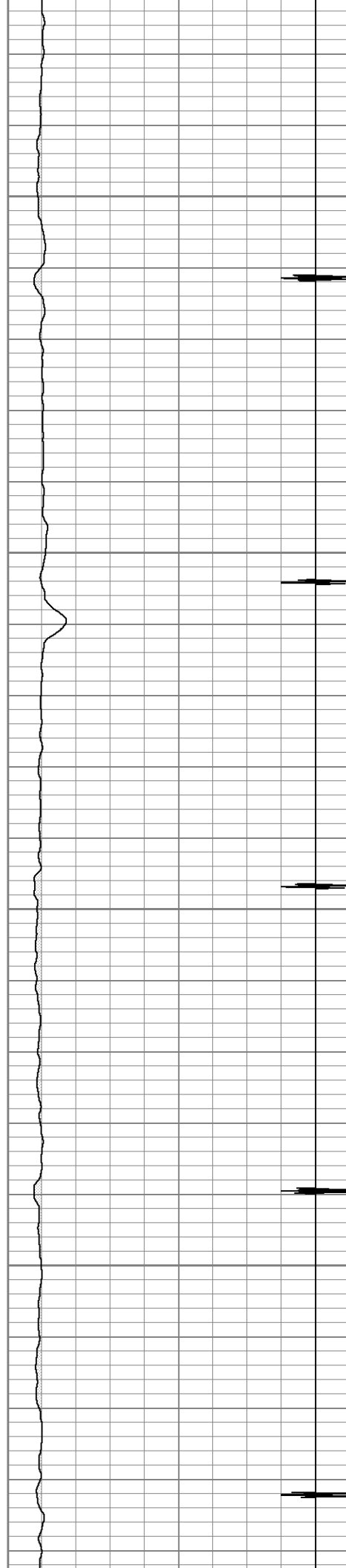


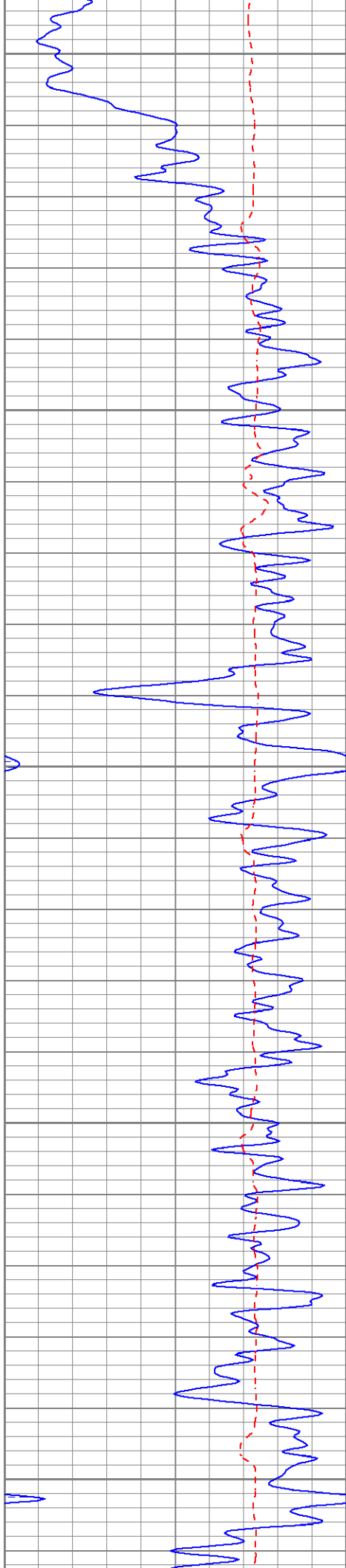
200

250

300

350





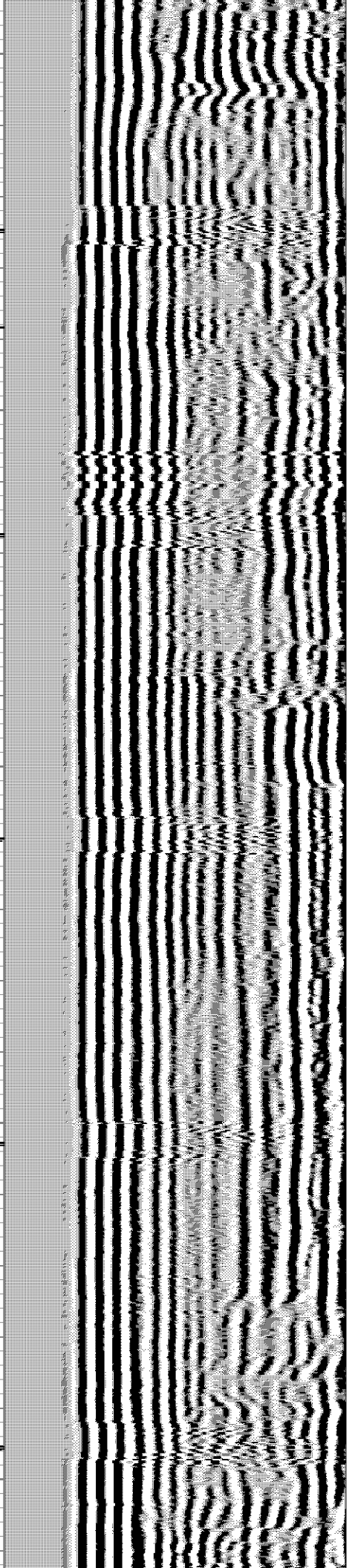
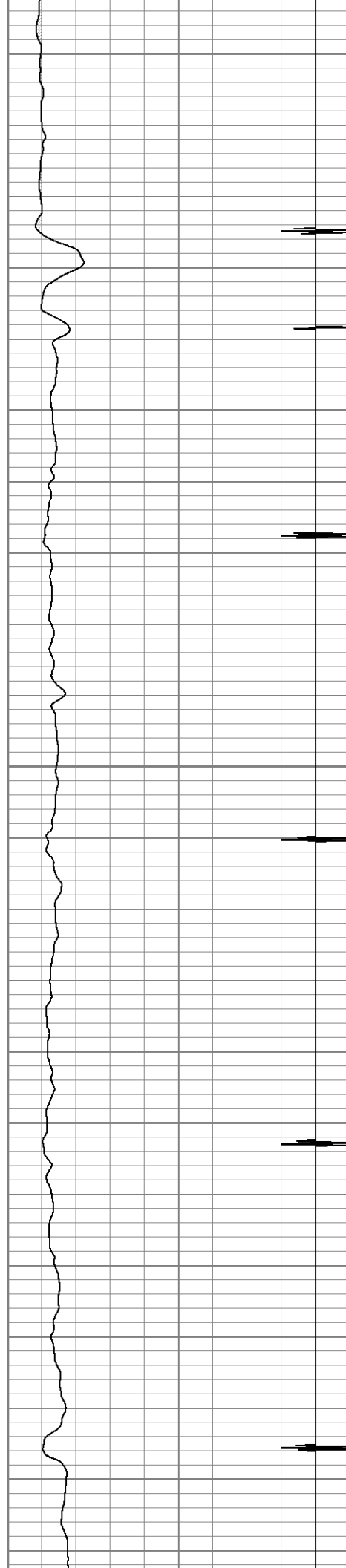
400

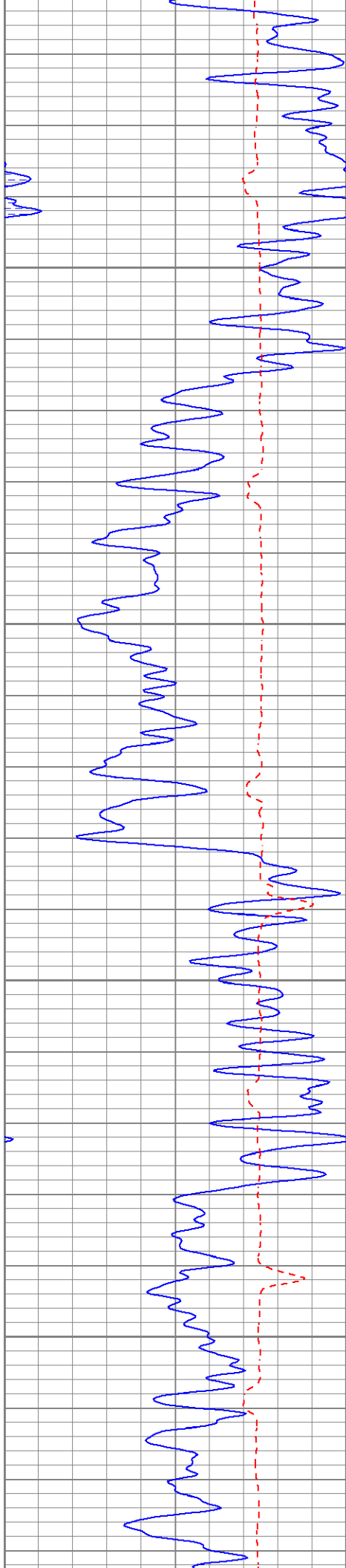
450

500

550

600



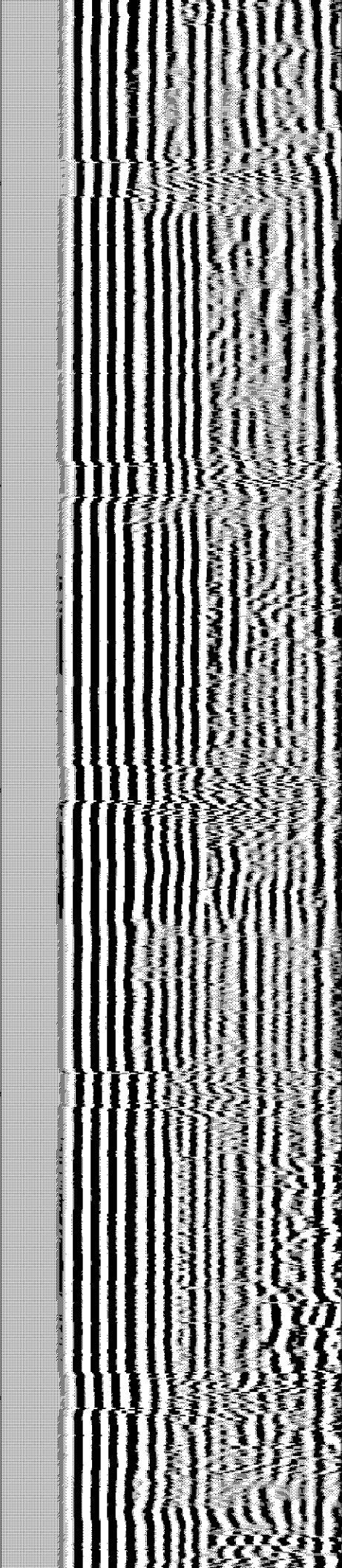
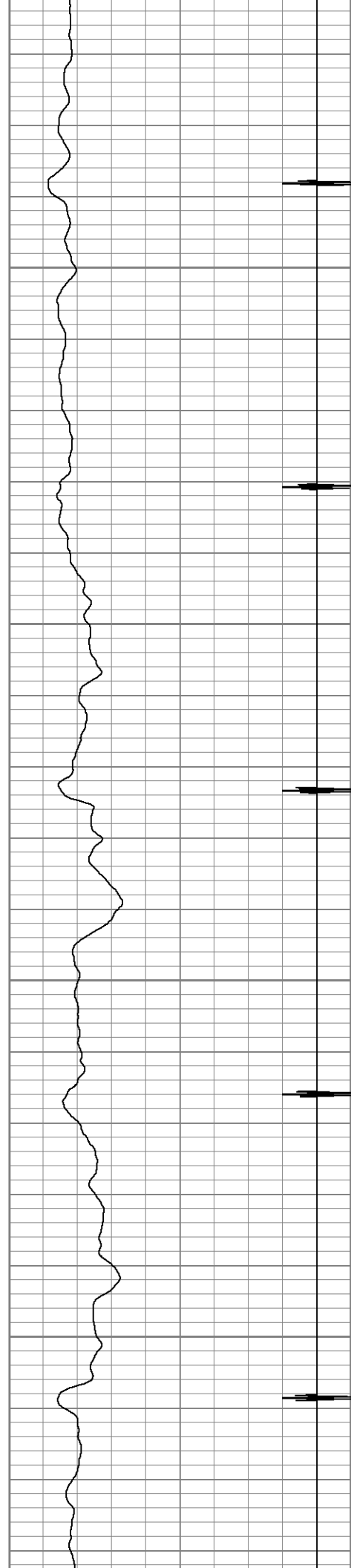


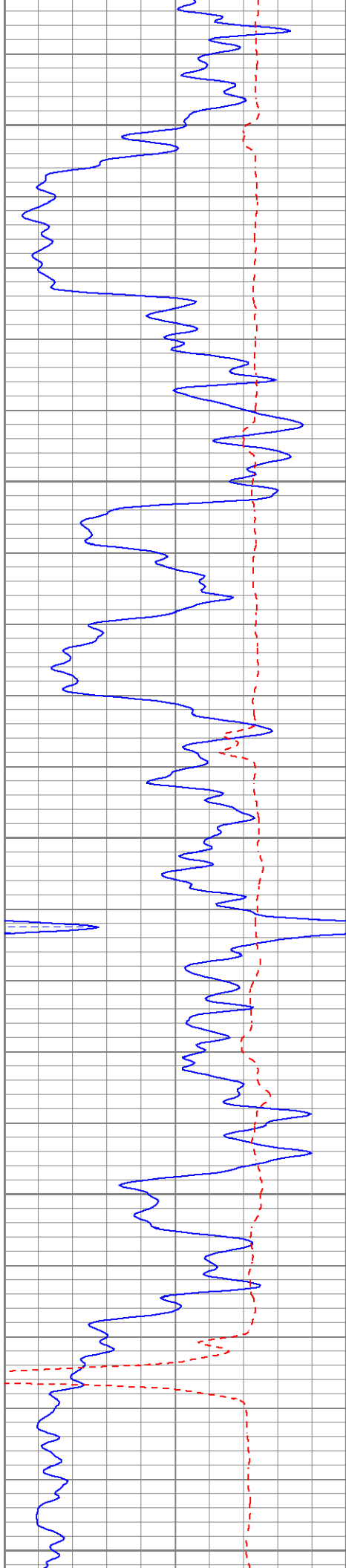
650

700

750

800





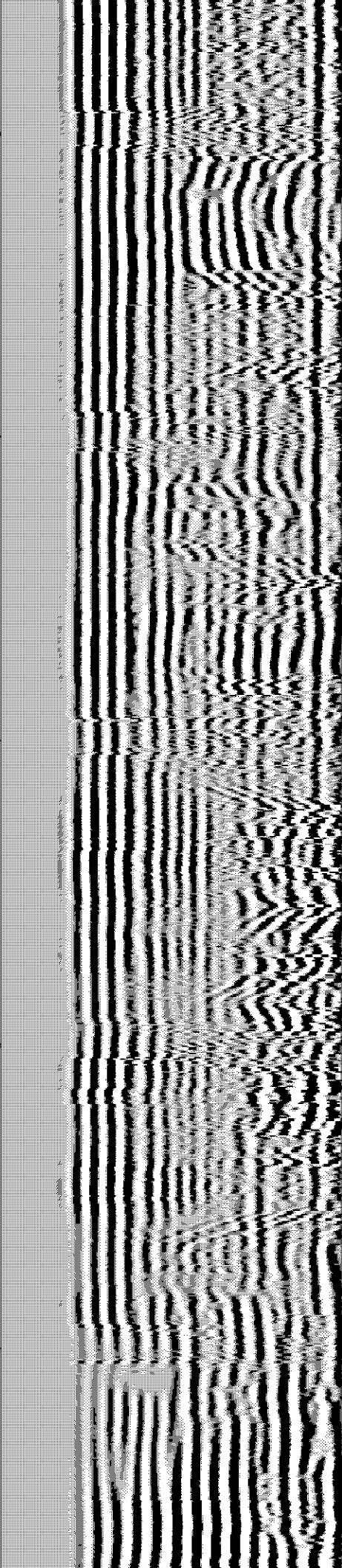
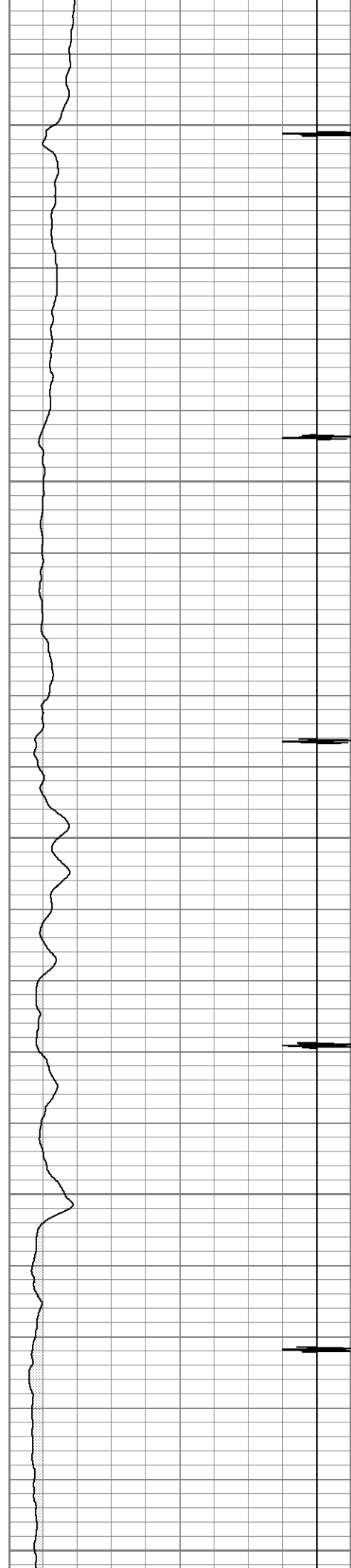
850

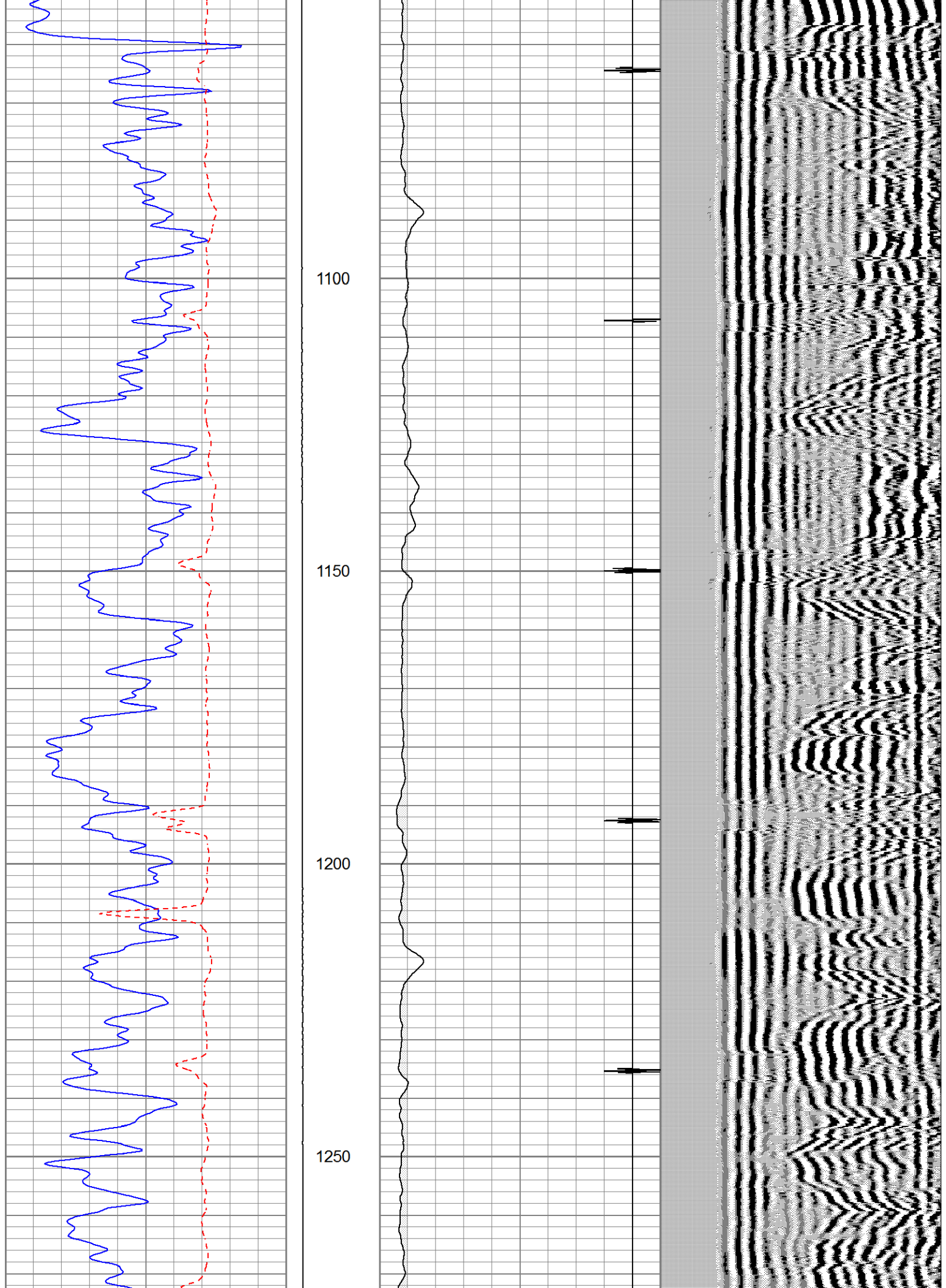
900

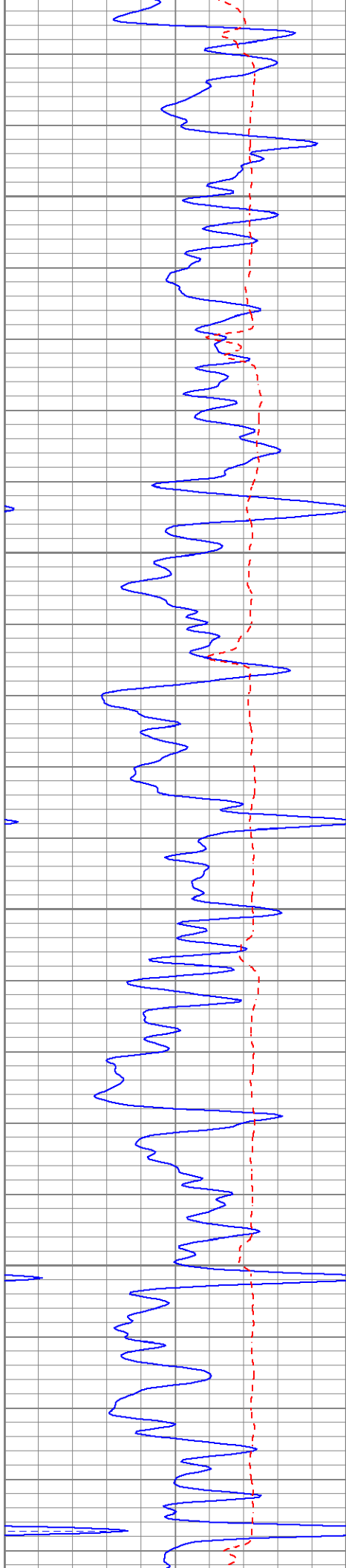
950

1000

1050





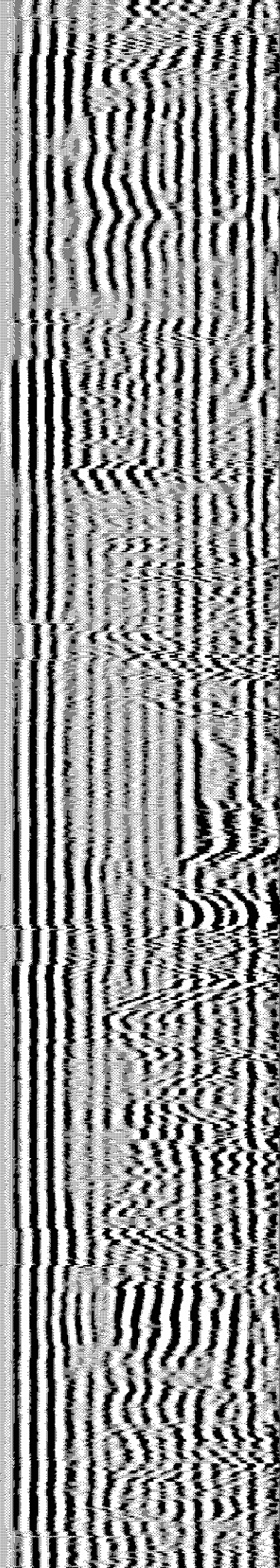
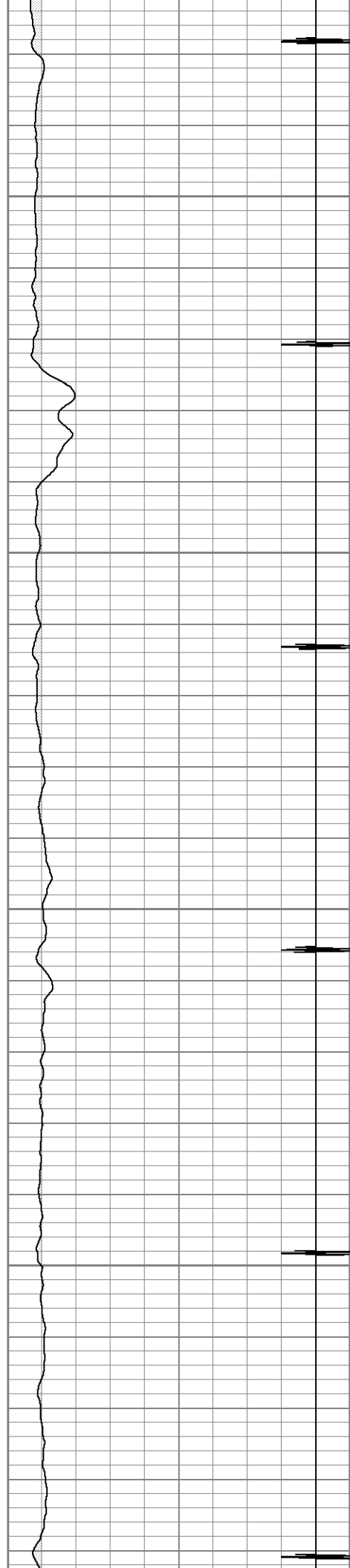


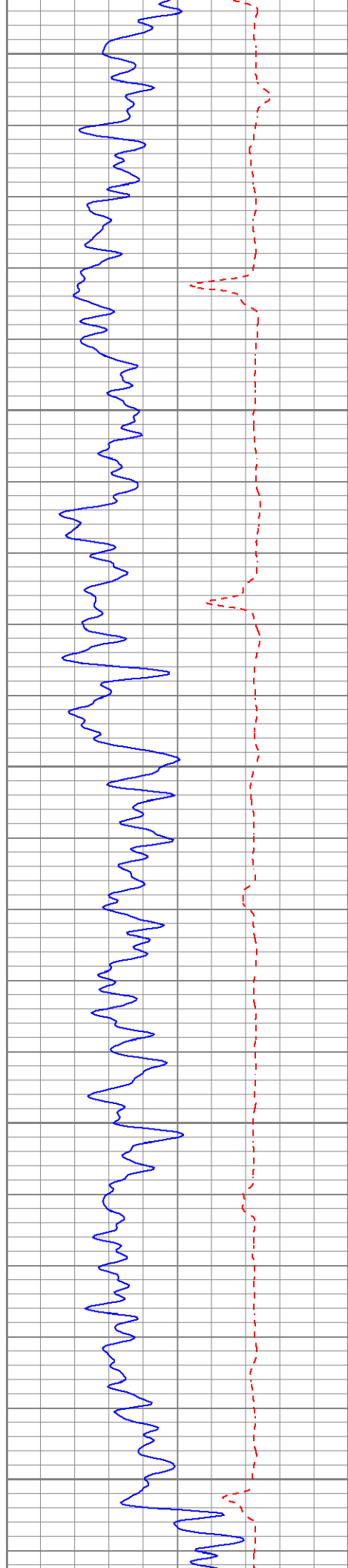
1300

1350

1400

1450





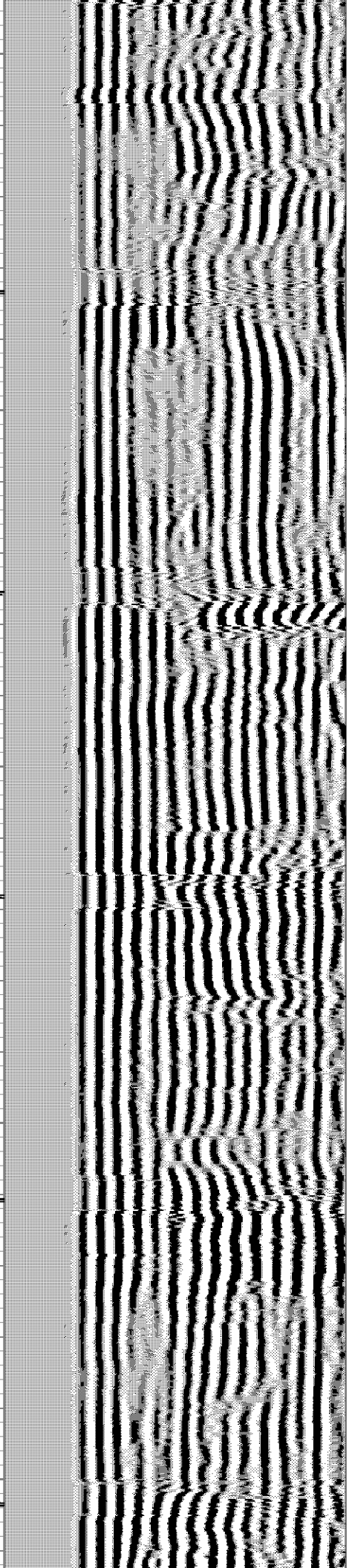
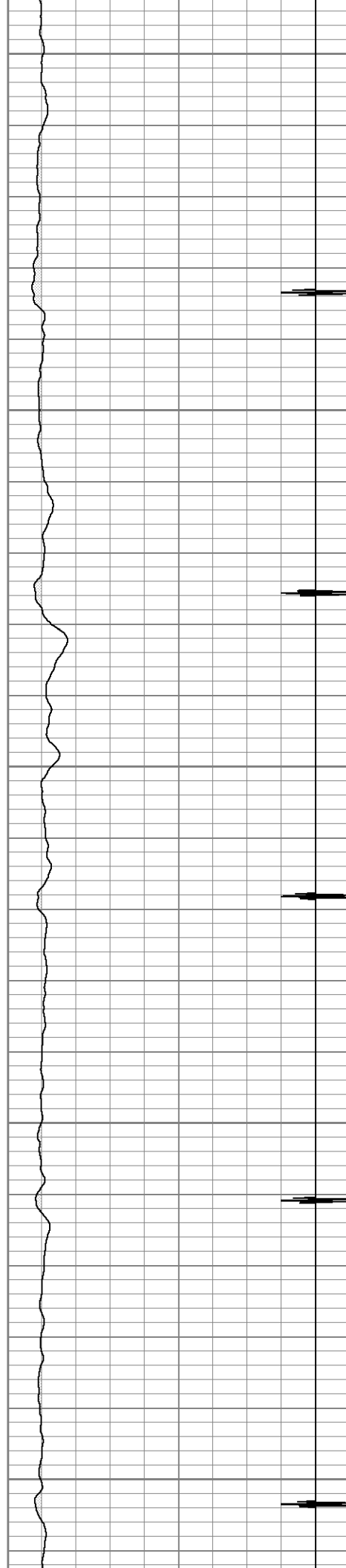
1500

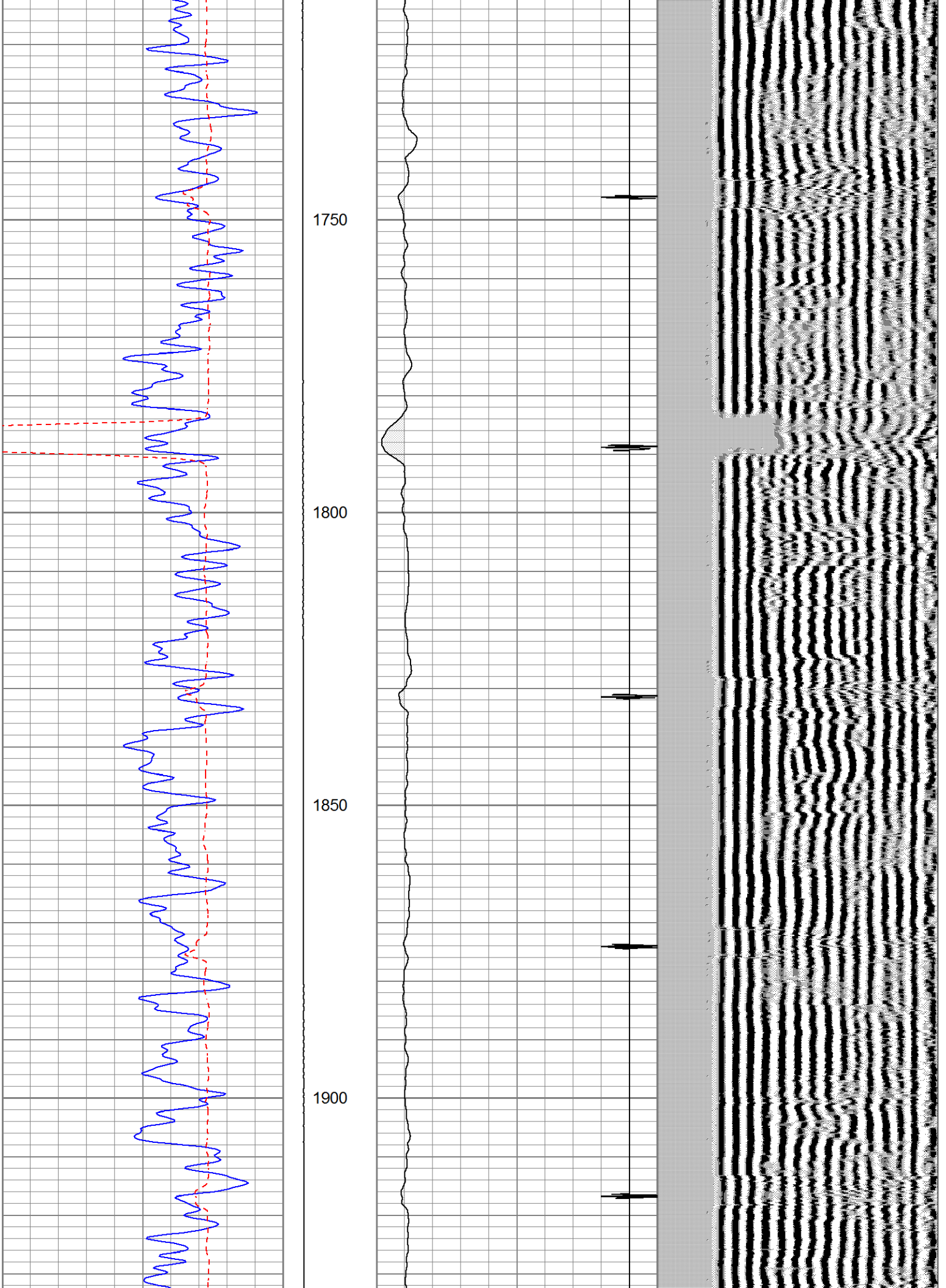
1550

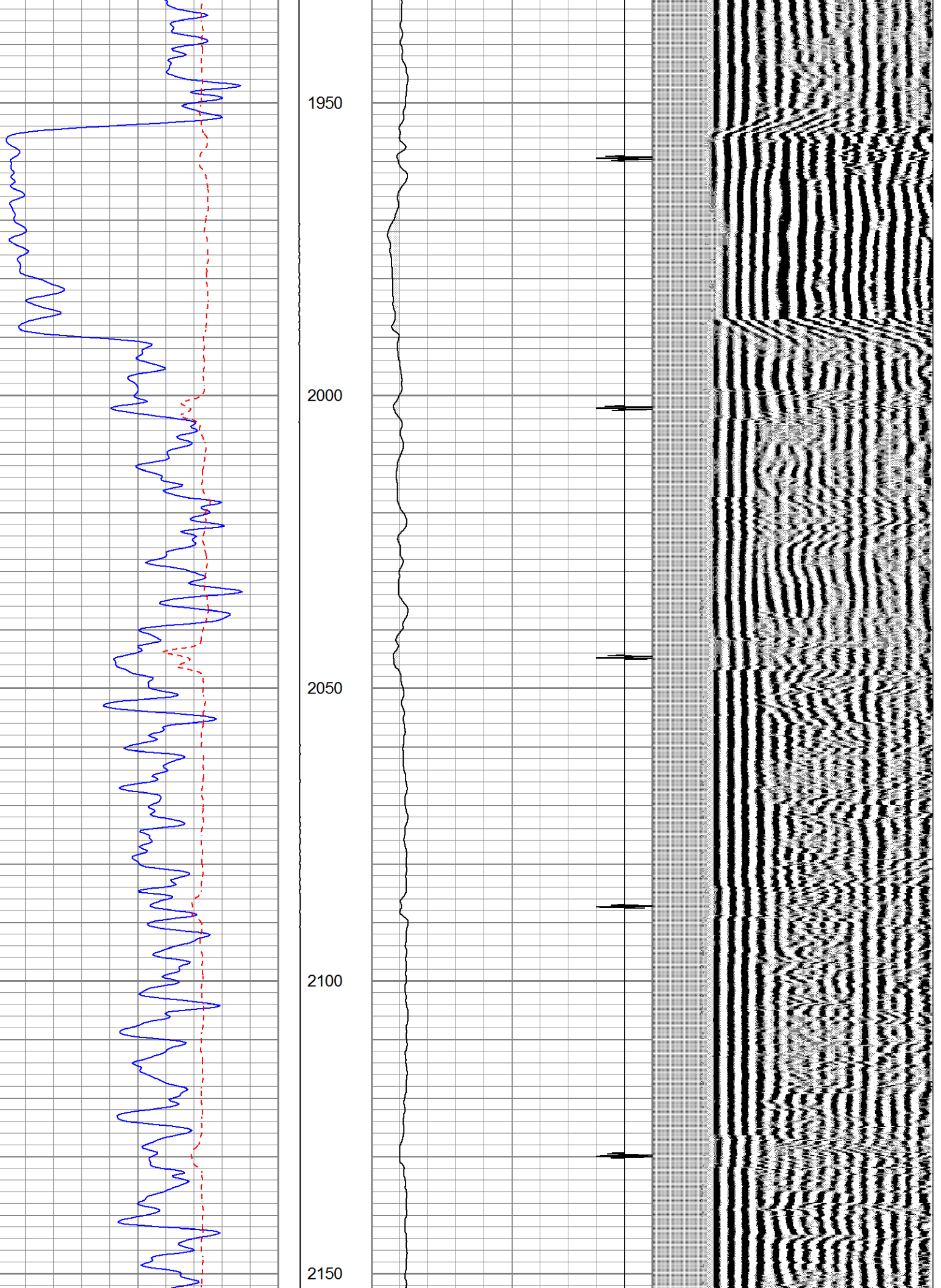
1600

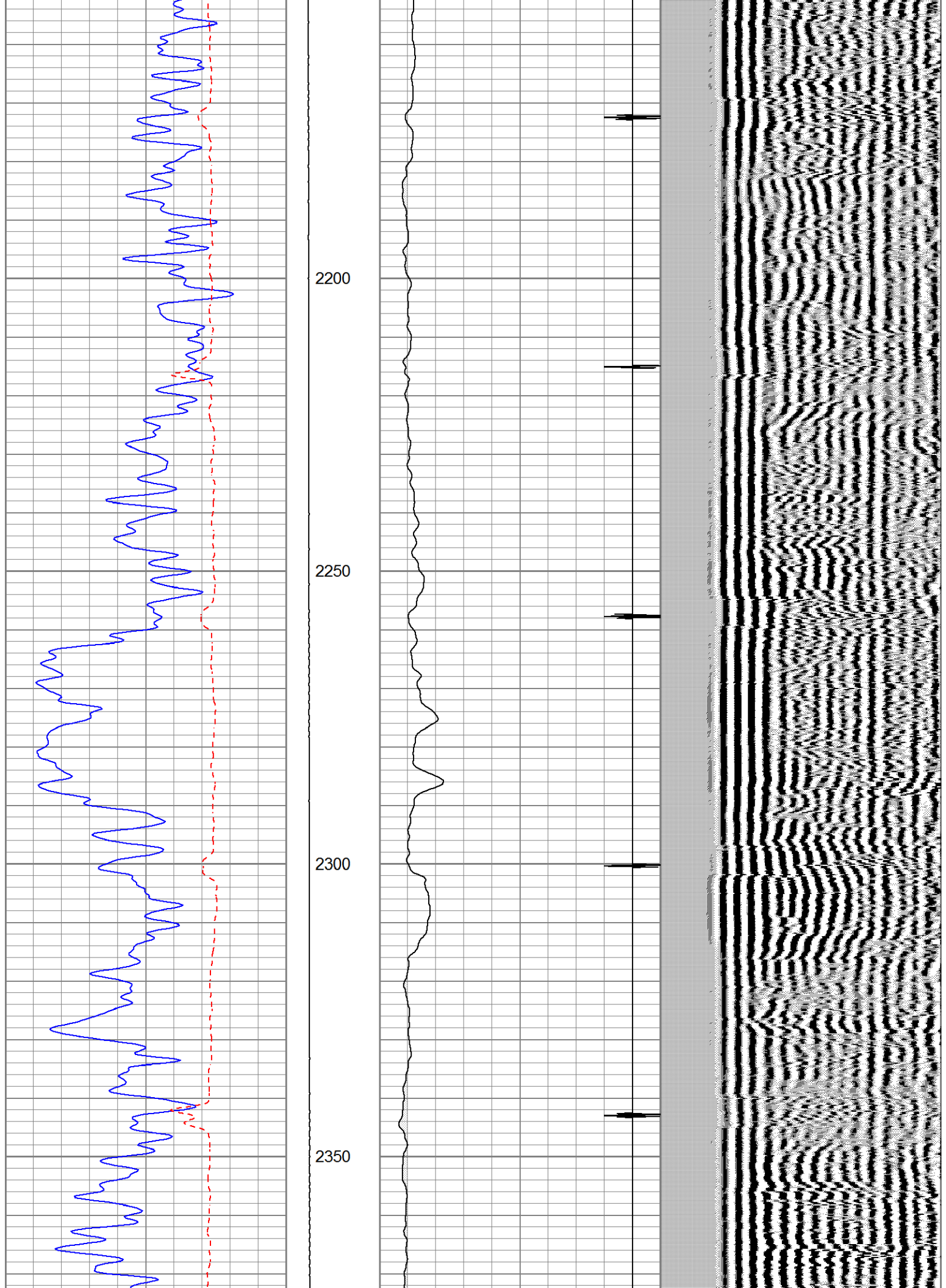
1650

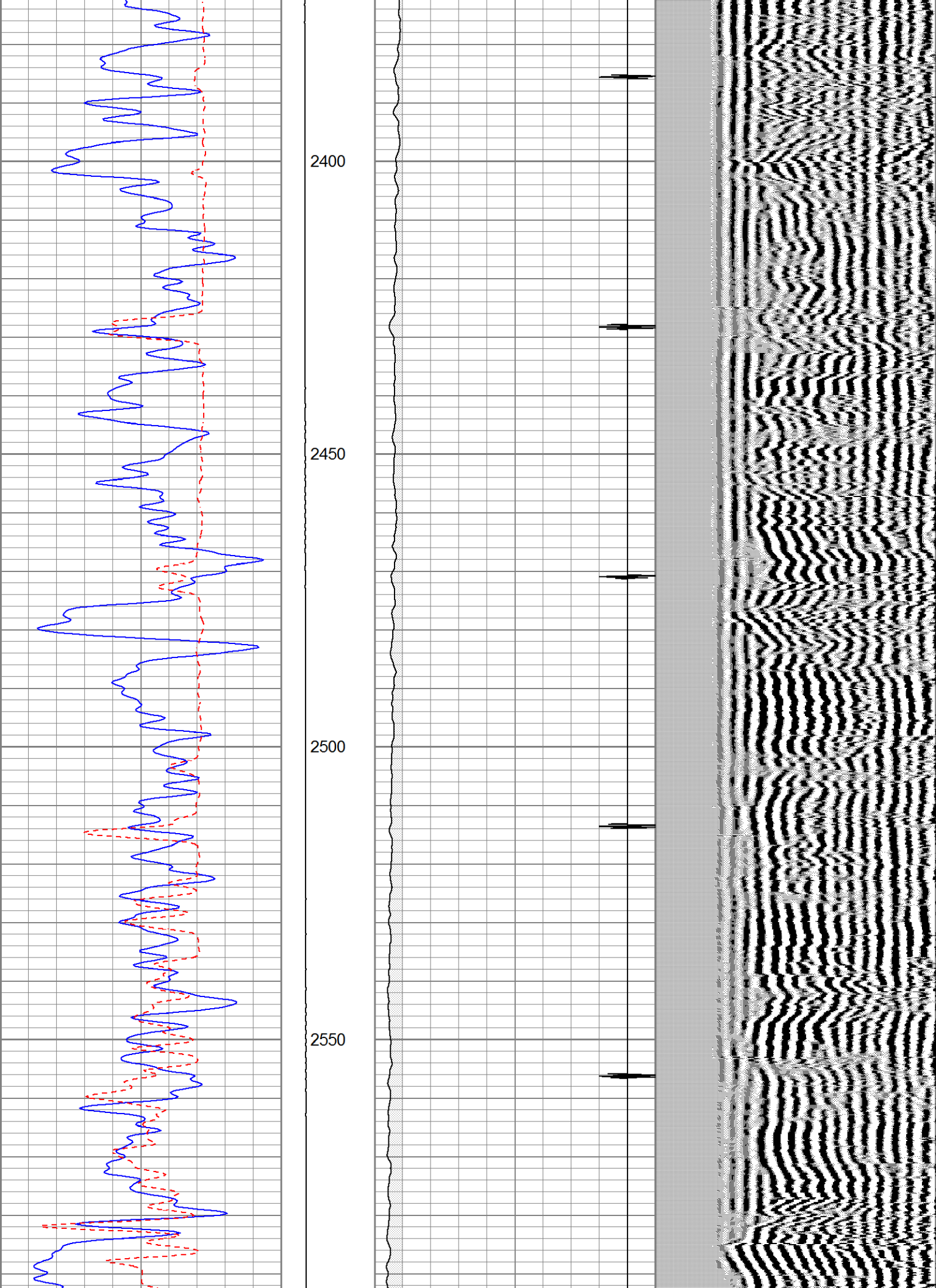
1700

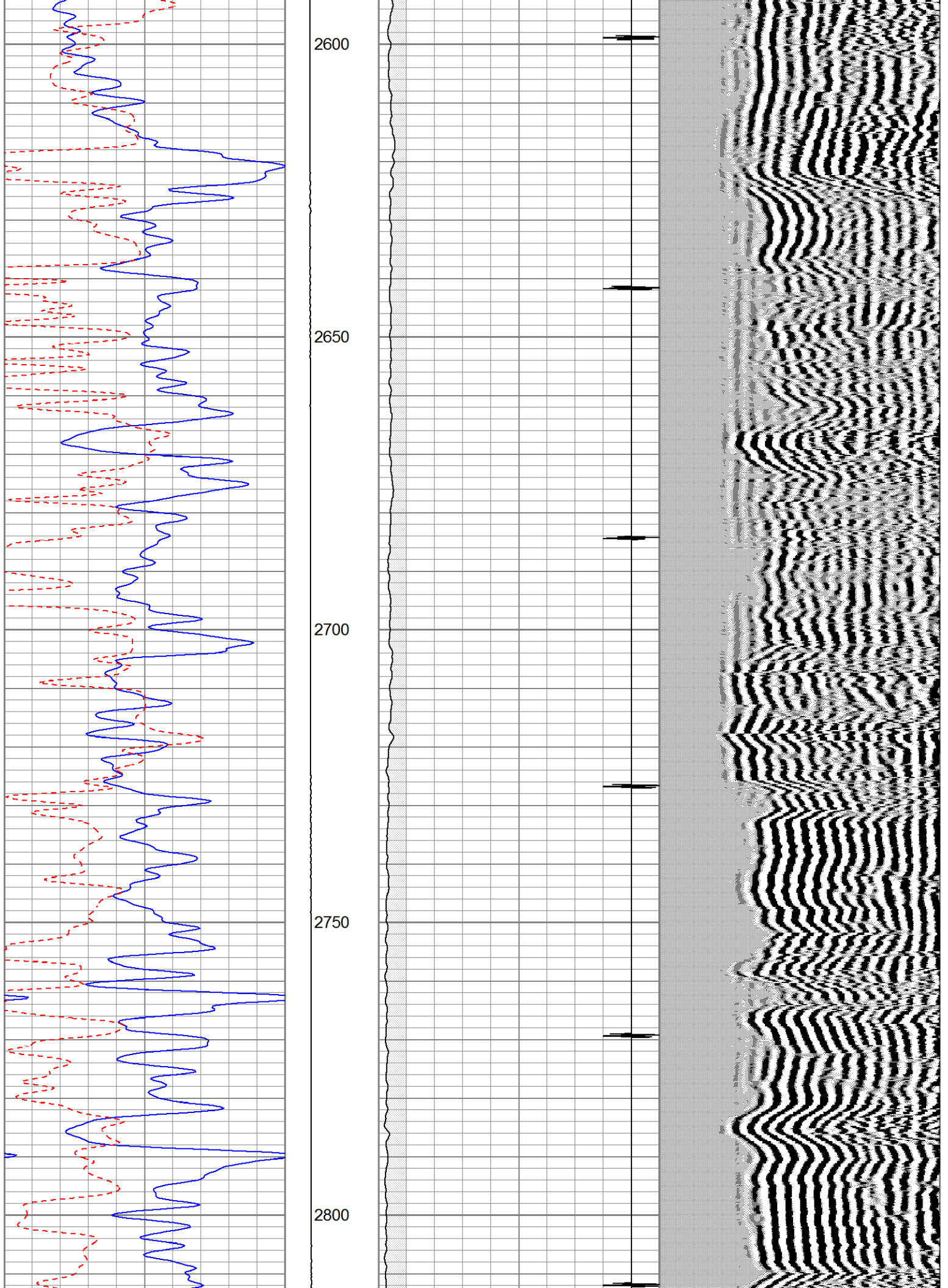


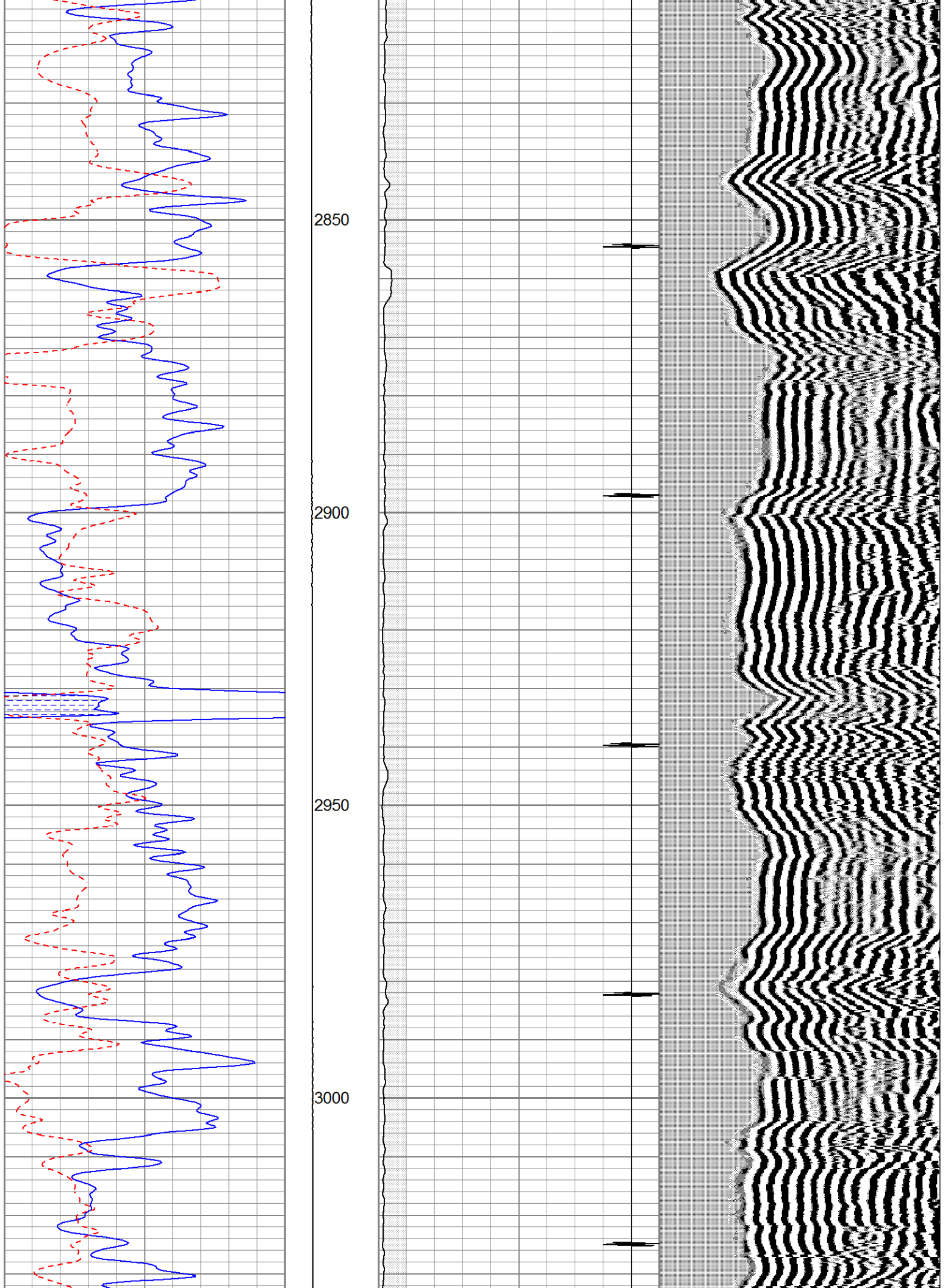


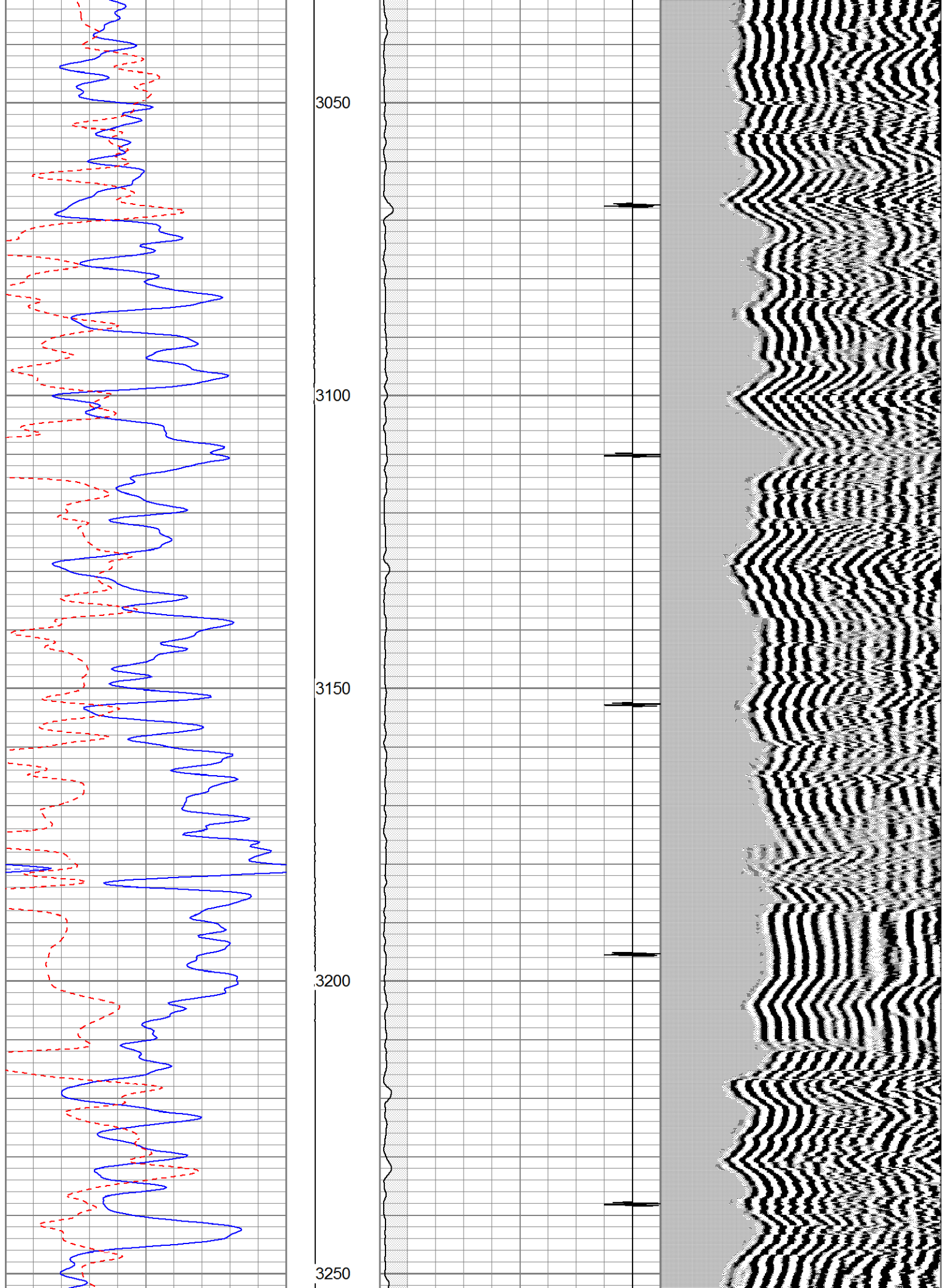


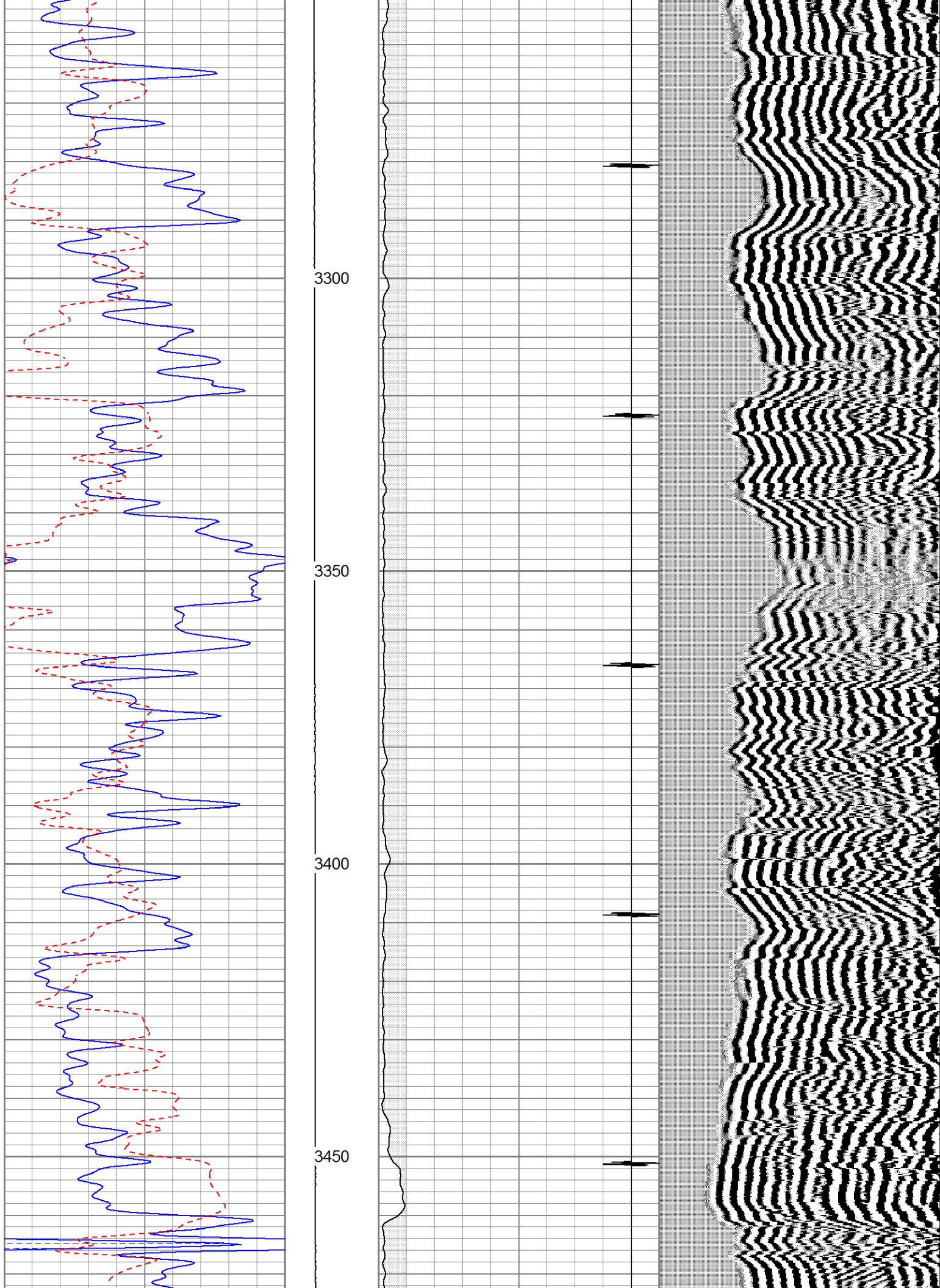


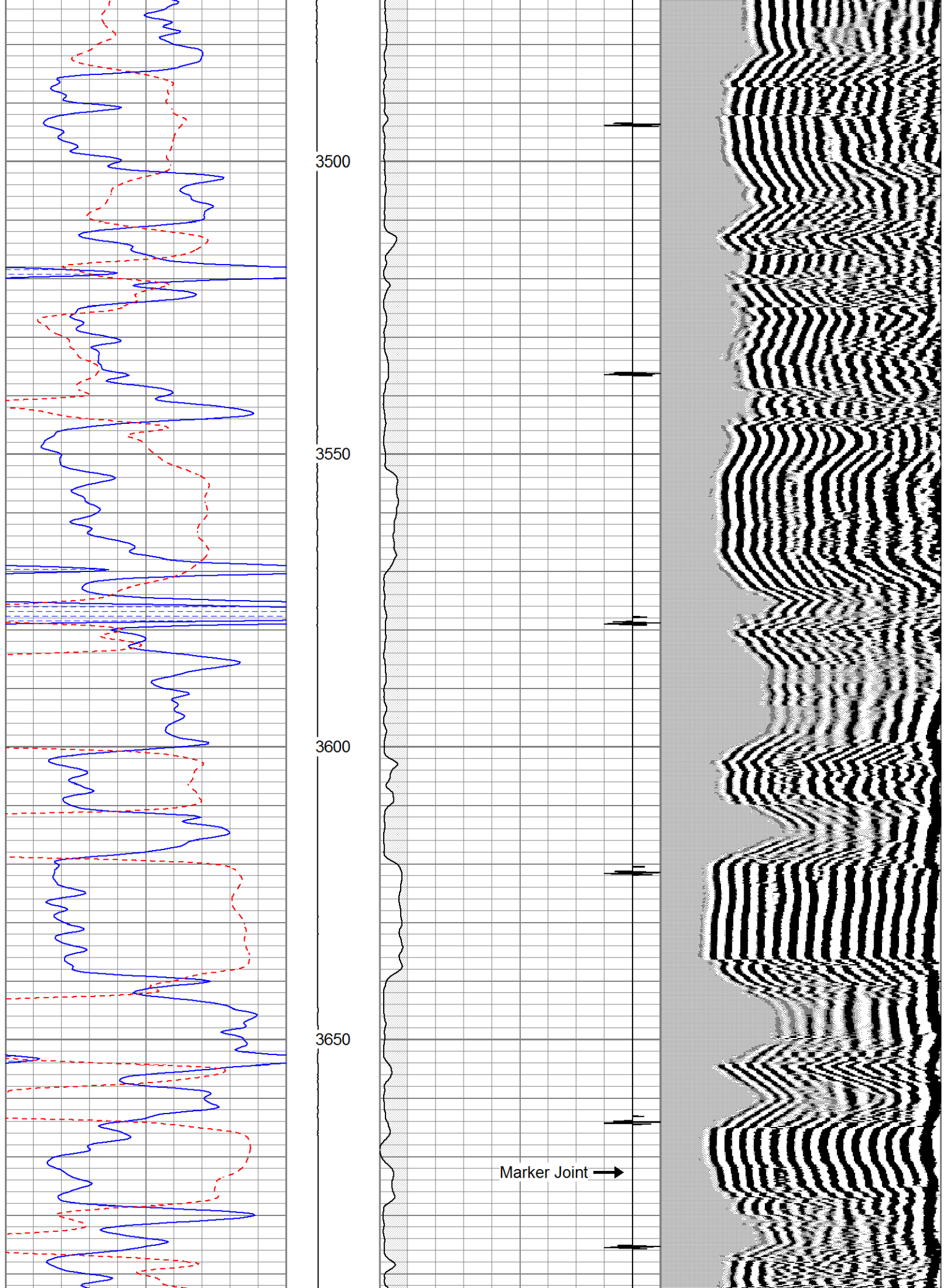


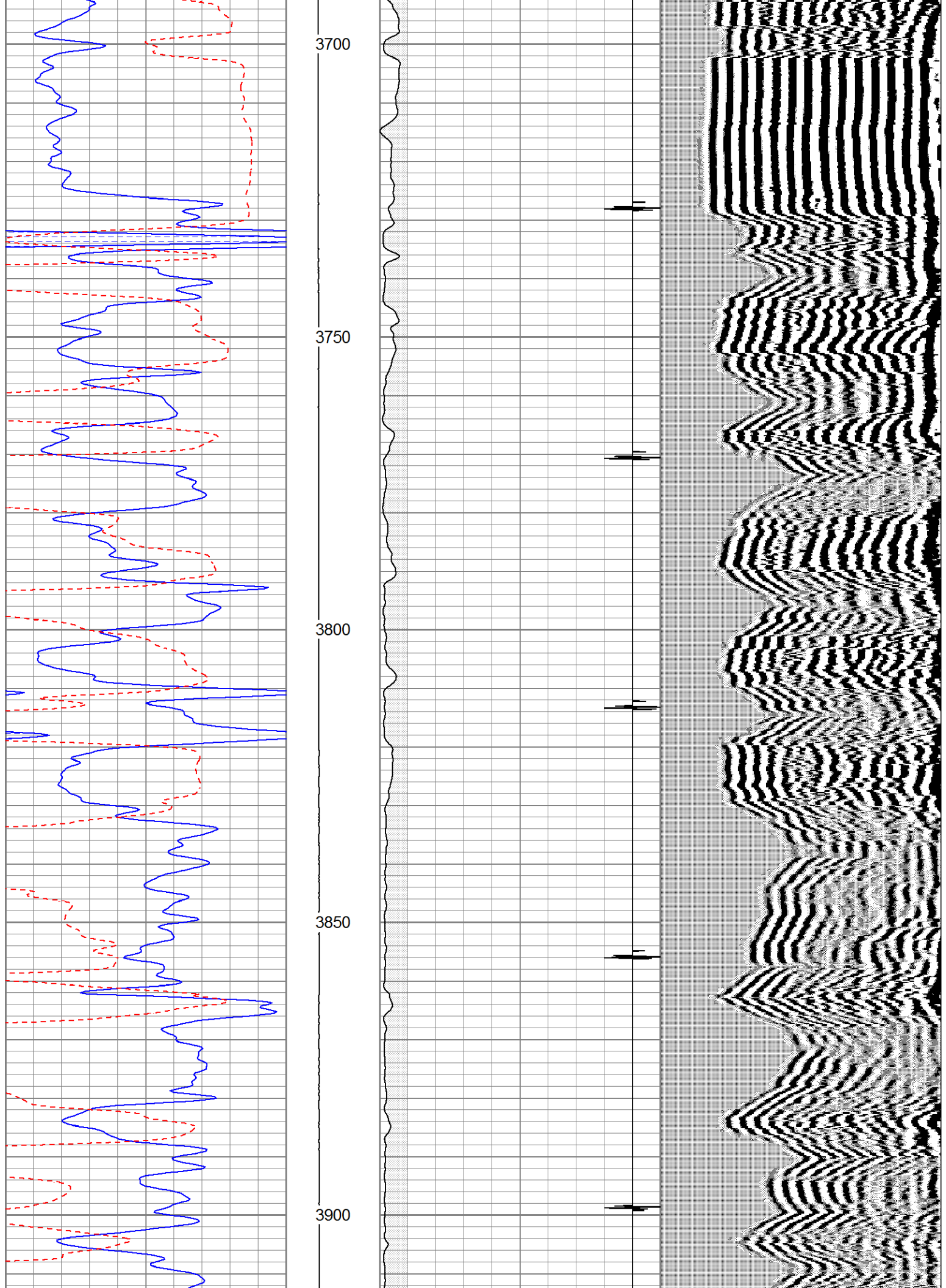


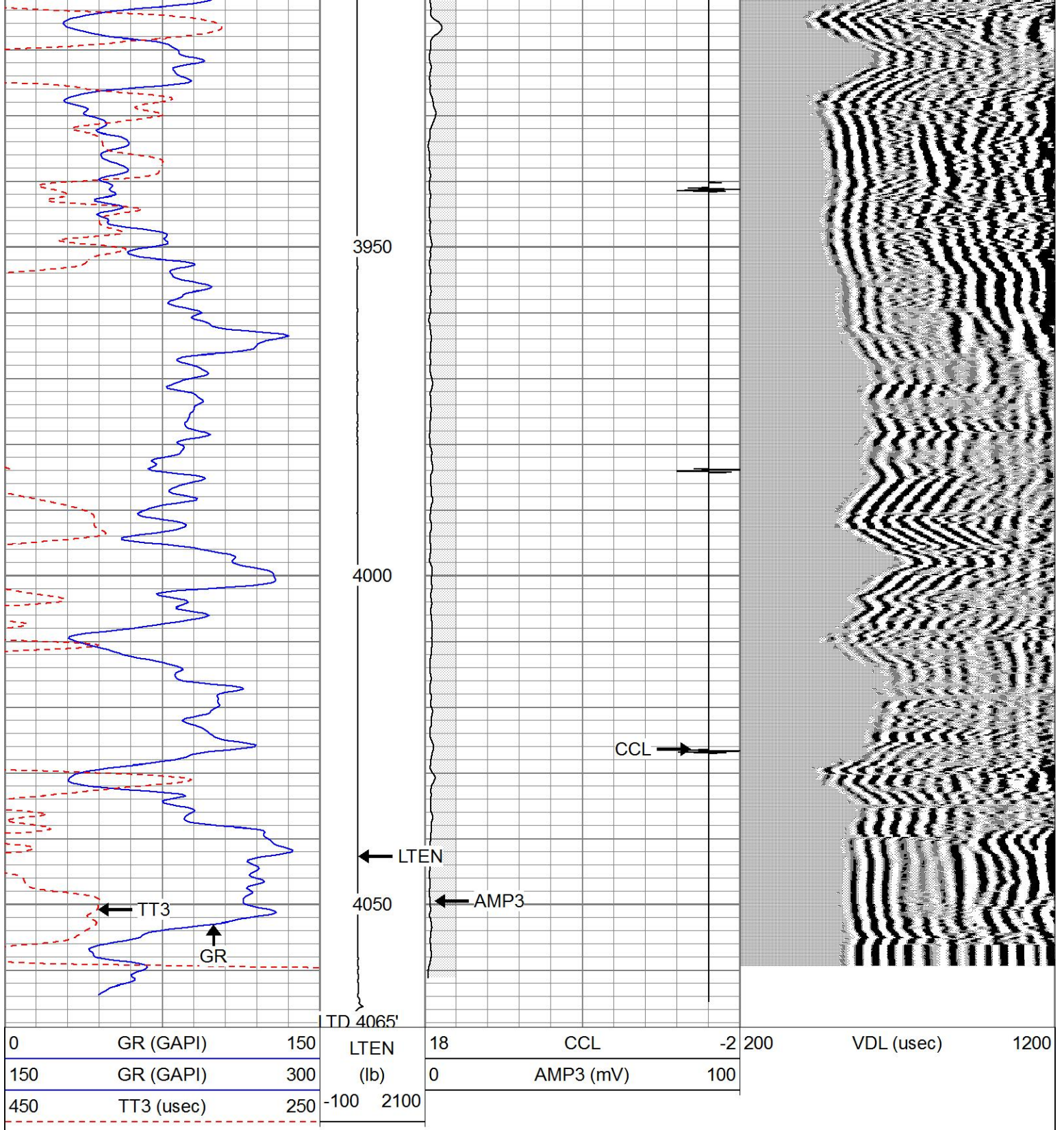










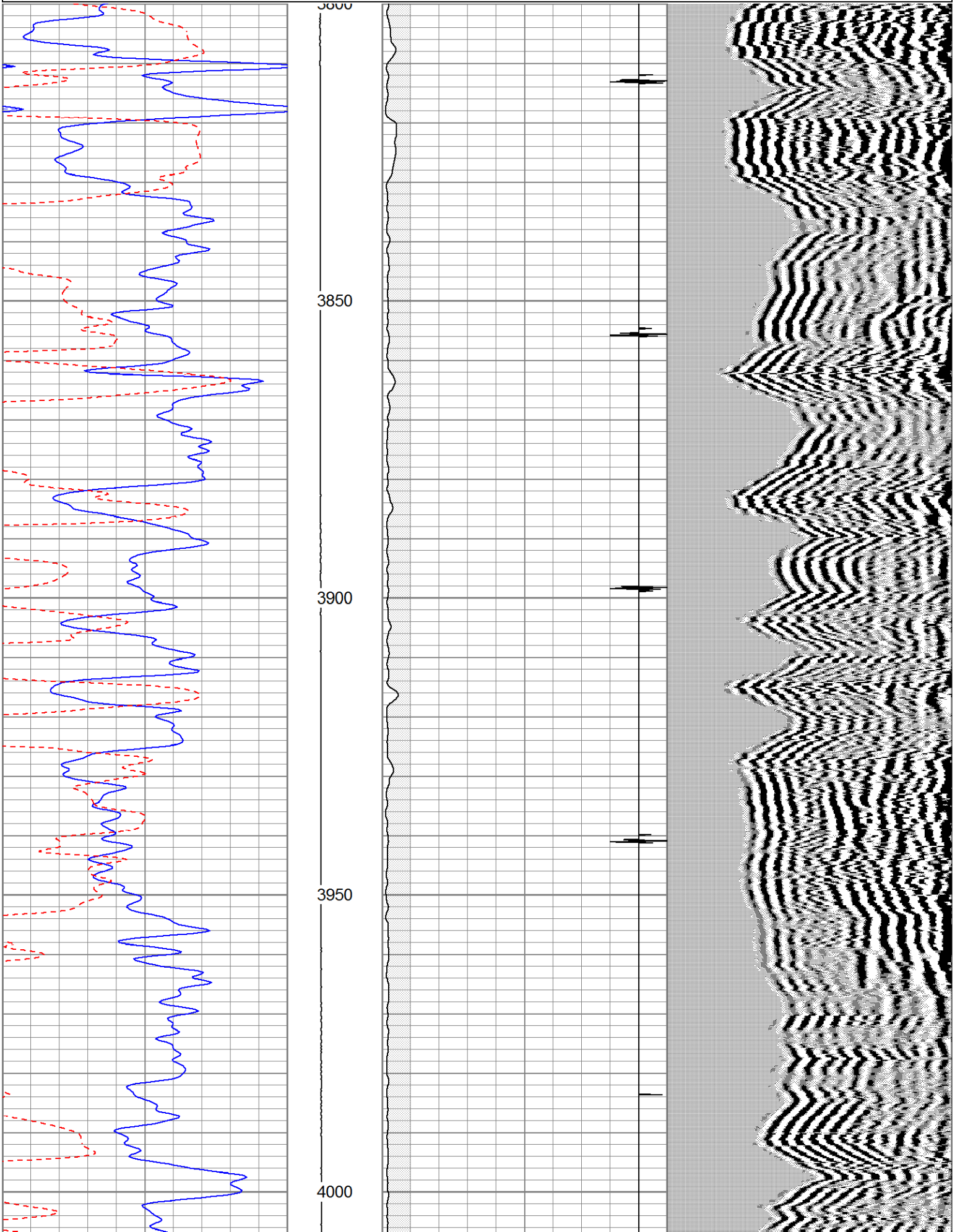


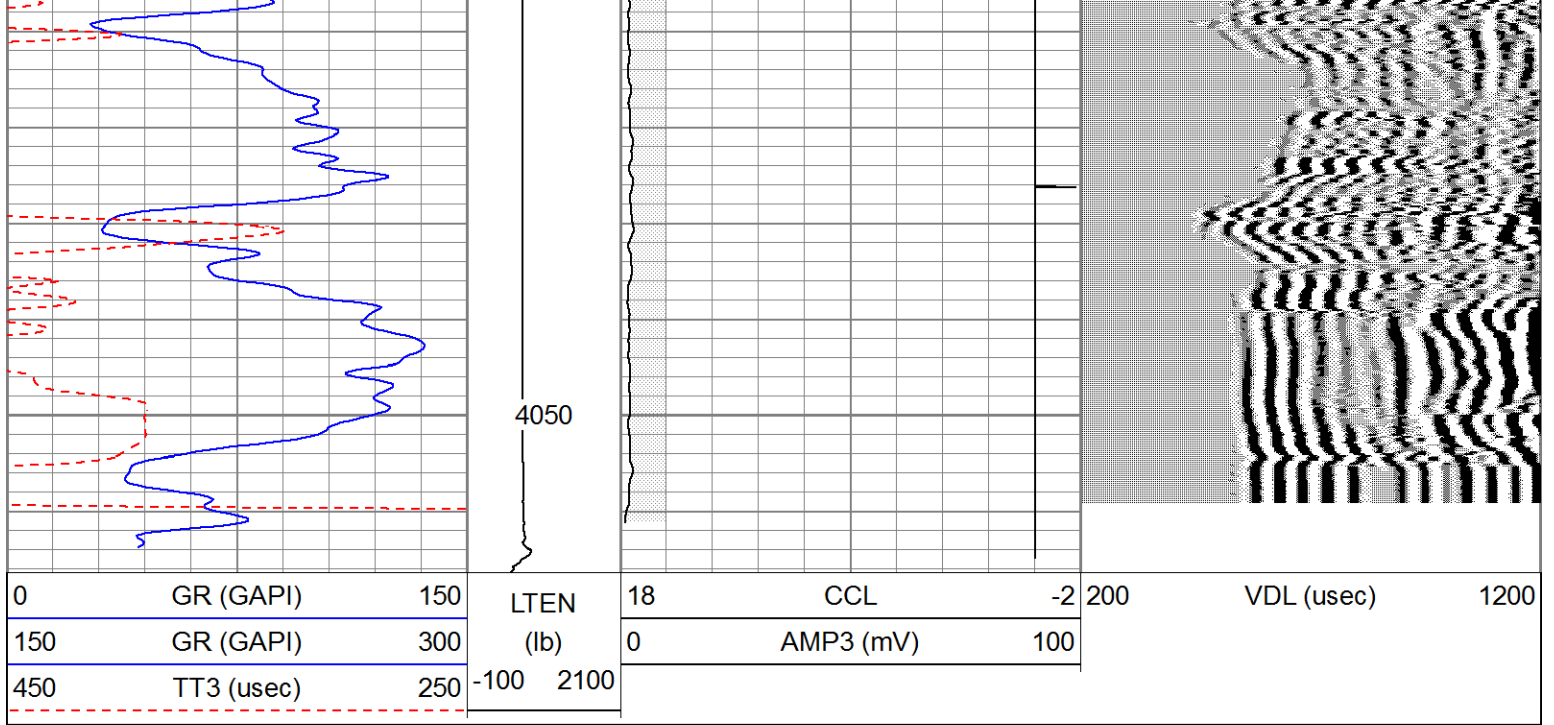
REPEAT SECTION

Database File quailoilandgaslcelllott1.db
 Dataset Pathname pass2
 Presentation Format cblsec
 Dataset Creation Thu Jun 08 08:43:16 2023
 Charted by Depth in Feet scaled 1:240

0	GR (GAPI)	150	LTEN	18	CCL	-2	200	VDL (usec)	1200
---	-----------	-----	------	----	-----	----	-----	------------	------

150	GR (GAPI)	300	(lb)	0	AMP3 (mV)	100
450	TT3 (usec)	250	-100 2100			





Calibration Report

Database File quailoilandgaslcelllott1.db
 Dataset Pathname pass5
 Dataset Creation Thu Jun 08 10:12:25 2023

Gamma Ray Calibration Report

Serial Number: 080224
 Tool Model: Probe1
 Performed: Wed Mar 08 08:45:31 2023

Calibrator Value: 200.0 GAPI

Background Reading: 15.0 cps
 Calibrator Reading: 222.7 cps

Sensitivity: 1.4000 GAPI/cps

Segmented Cement Bond Log Calibration Report

Serial Number: 061007
 Tool Model: DigitalCBL

Calibration Casing Diameter: 5.500 in
 Calibration Depth: 0.000 ft

Master Calibration, performed Thu Jun 08 08:20:34 2023:

	Raw (v)		Calibrated (mv)		Results	
	Zero	Cal	Zero	Cal	Gain	Offset
3'	0.001	1.214	1.000	71.921	58.500	0.924
CAL						
5'	0.001	1.186	1.000	71.921	59.868	0.914
SUM						
S1						
S2						
S3						
S4						
S5						
S6						

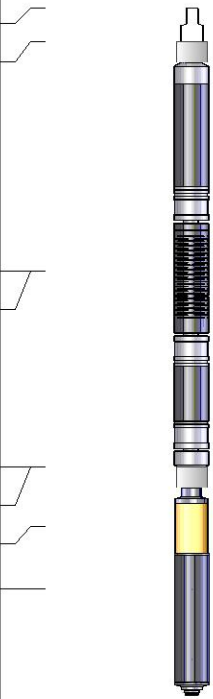
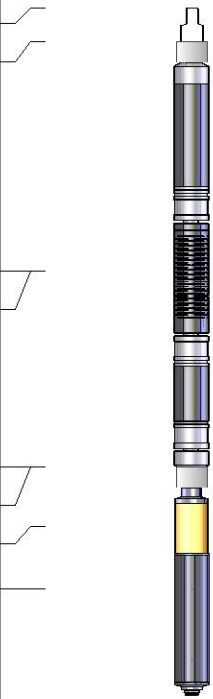
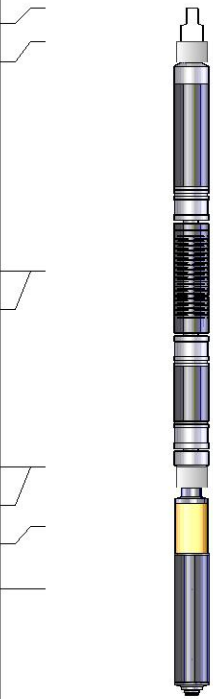
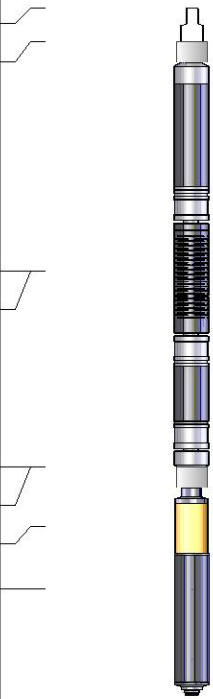
S7
S8

Internal Reference Calibration, performed (Not Performed):

	Raw (v)		Calibrated (v)		Results	
	Zero	Cal	Zero	Cal	Gain	Offset
CAL						

Air Zero Calibration, performed Thu Jun 08 08:20:09 2023:

	Raw (v)		Calibrated (v)		Results	
	Zero		Zero		Offset	
3'	0.000		0.000		0.000	
5'	0.000		0.000		0.000	
SUM						
S1						
S2						
S3						
S4						
S5						
S6						
S7						
S8						

Sensor	Offset (ft)	Schematic	Description	Length (ft)	O.D. (in)	Weight (lb)
CHD	14.93		CHD-sdschd	0.75	1.44	3.00
CENT	14.18		CENT-rub2	0.46	1.75	
WVF5FT	9.21		Probedig-DigitalCBL (061007)	8.77	2.75	92.00
WVF3FT	9.21		2 3/4 Bond Tool			
CENT	4.96		CENT-rub2	0.46	1.75	
WVFSYNC	4.96		CCL-Probe (080224)	1.42	2.75	7.50
CCL	3.67		Probe 2 3/4"			
GR	2.30		GR-Probe1 (080224)	3.08	2.75	40.00

Dataset: quailoilandgascelliott1.db: field/well/run1/pass5
 Total length: 14.93 ft
 Total weight: 142.50 lb
 O.D.: 2.75 in