



**CEMENT
BOND
LOG**

Company MJT OIL
Well SCHOENTHALER #5
Field ADAIR
County TREGO State KS

Location: 1170' FNL & 1815' FWL
API #: 1519523157
Other Services

Company MJT OIL
Well SCHOENTHALER #5
Field ADAIR
County TREGO
State KS

Date 4/26/2023
Run Number ONE
Depth Driller 4025'
Depth Logger 3974
Bottom Logged Interval 3971'
Top Log Interval 2700'
Open Hole Size 7 7/8
Type Fluid WATER
Density / Viscosity ///
Max. Recorded Temp. ///
Estimated Cement Top 2884
Time Well Ready 4:00
Time Logger on Bottom 4:15
Equipment Number T-118
Location HAYS, KS
Recorded By DANNY LEIKER
Witnessed By AVEN WEAVERLING

| Borehole Record | | | | Tubing Record | | | |
|-----------------|-----|------|----|---------------|--------|------|----|
| Run Number | Bit | From | To | Size | Weight | From | To |
| | | | | | | | |
| | | | | | | | |

| | | | | |
|-------------------|-------|--------|-----|--------|
| Casing Record | Size | Mgt/Ft | Top | Bottom |
| Surface String | 8 5/8 | 23LB | O | 223 |
| Prot. String | | | | |
| Production String | 5.5 | 15.5LB | 0 | 4024 |
| Liner | | | | |

<<< Fold Here >>>

All interpretations are opinions based on inferences from electrical or other measurements and we cannot and do not guarantee the accuracy or correctness of any interpretation, and we shall not, except in the case of gross or willful negligence on our part, be liable or responsible for any loss, costs, damages, or expenses incurred or sustained by anyone resulting from any interpretation made by any of our officers, agents or employees. These interpretations are also subject to our general terms and conditions set out in our current Price Schedule.

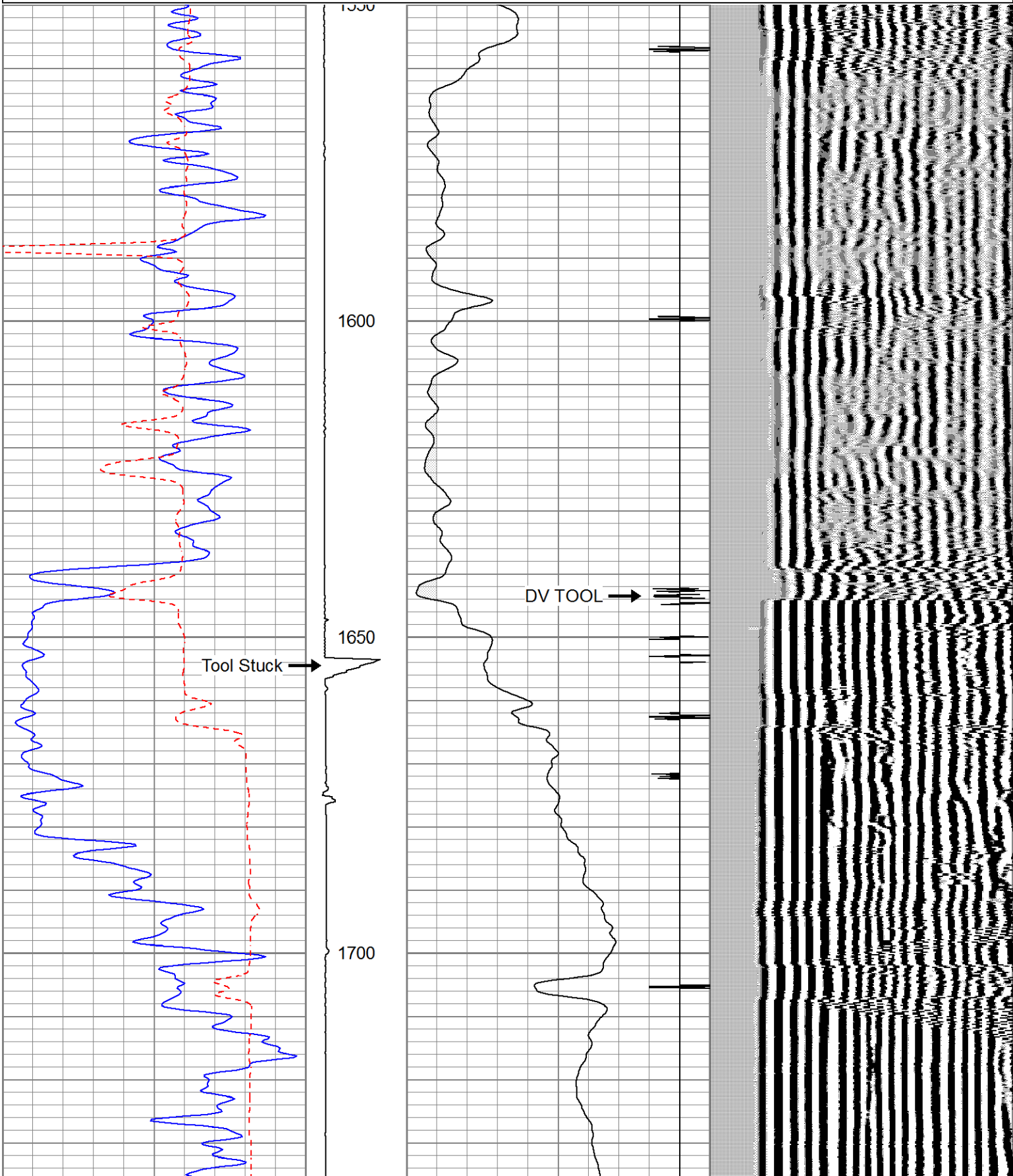
Comments

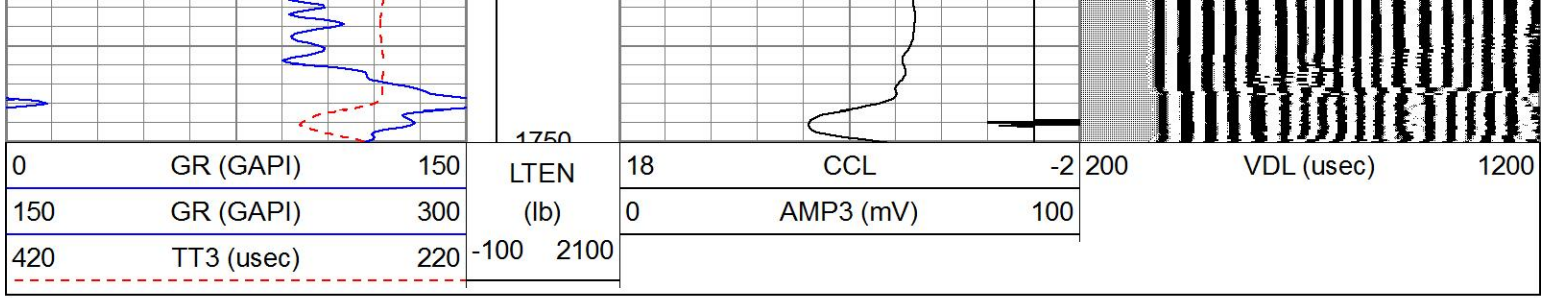


MAIN PASS

Database File mjttoilschoenthaler5.db
 Dataset Pathname pass4
 Presentation Format cblsec
 Dataset Creation Wed Apr 26 16:45:31 2023
 Charted by Depth in Feet scaled 1:240

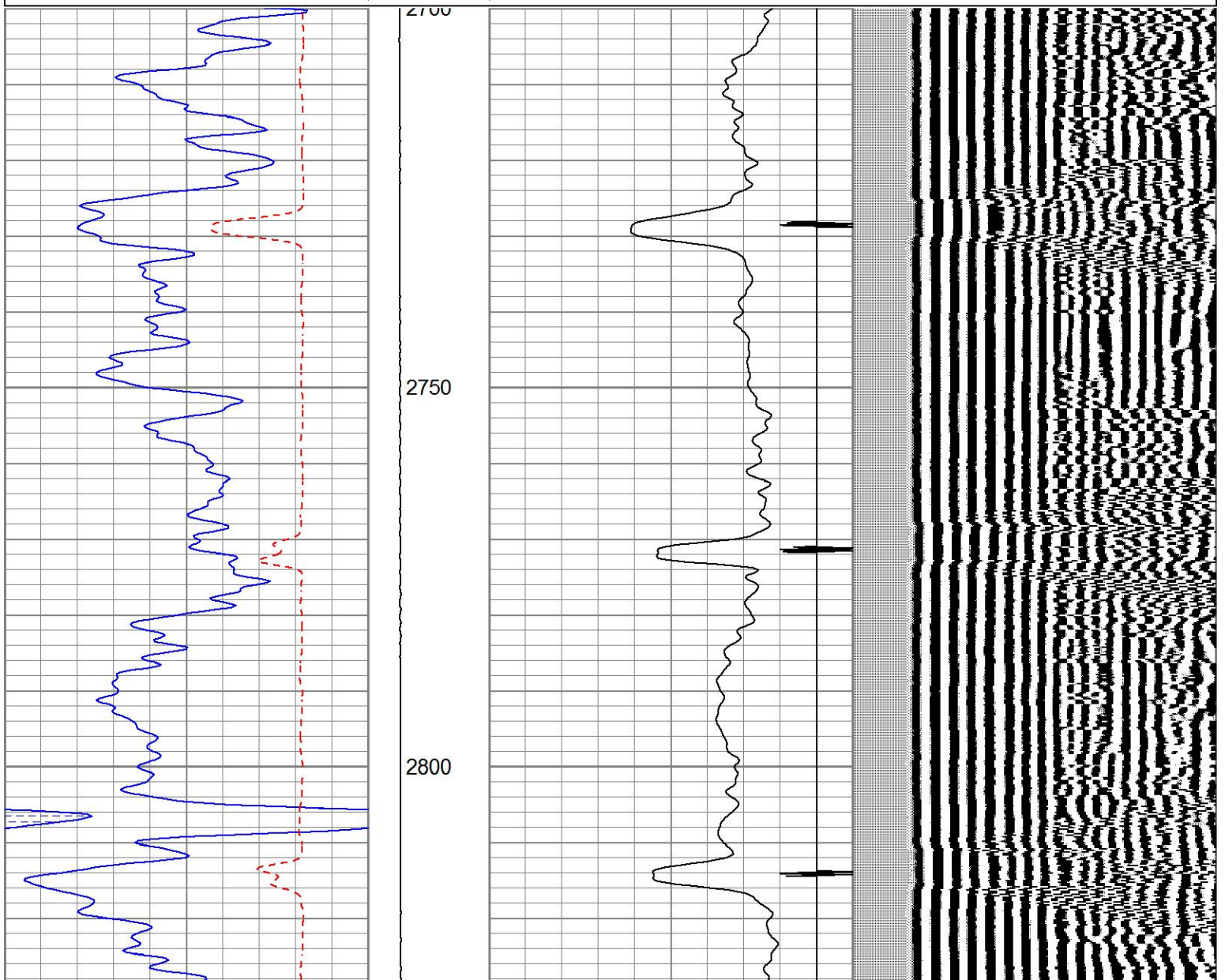
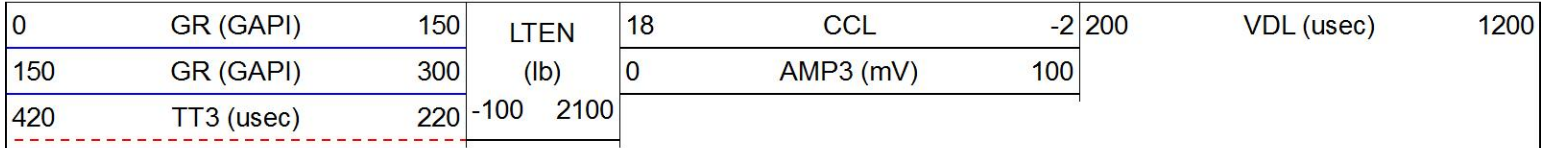
| | | | | | | | | | |
|-----|------------|-----|-----------|----|-----------|-----|-----|------------|------|
| 0 | GR (GAPI) | 150 | LTEN | 18 | CCL | -2 | 200 | VDL (usec) | 1200 |
| 150 | GR (GAPI) | 300 | (lb) | 0 | AMP3 (mV) | 100 | | | |
| 420 | TT3 (usec) | 220 | -100 2100 | | | | | | |

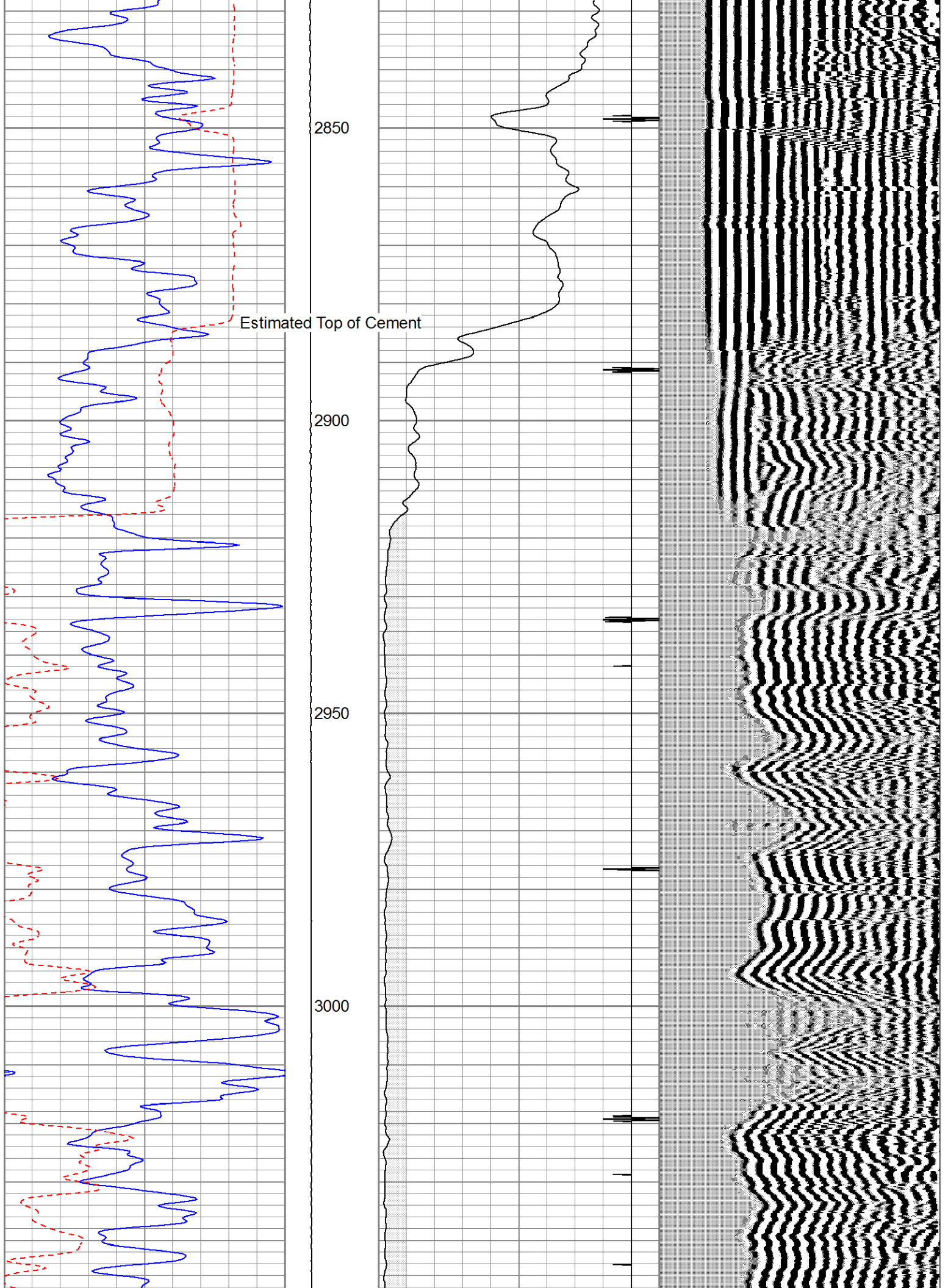


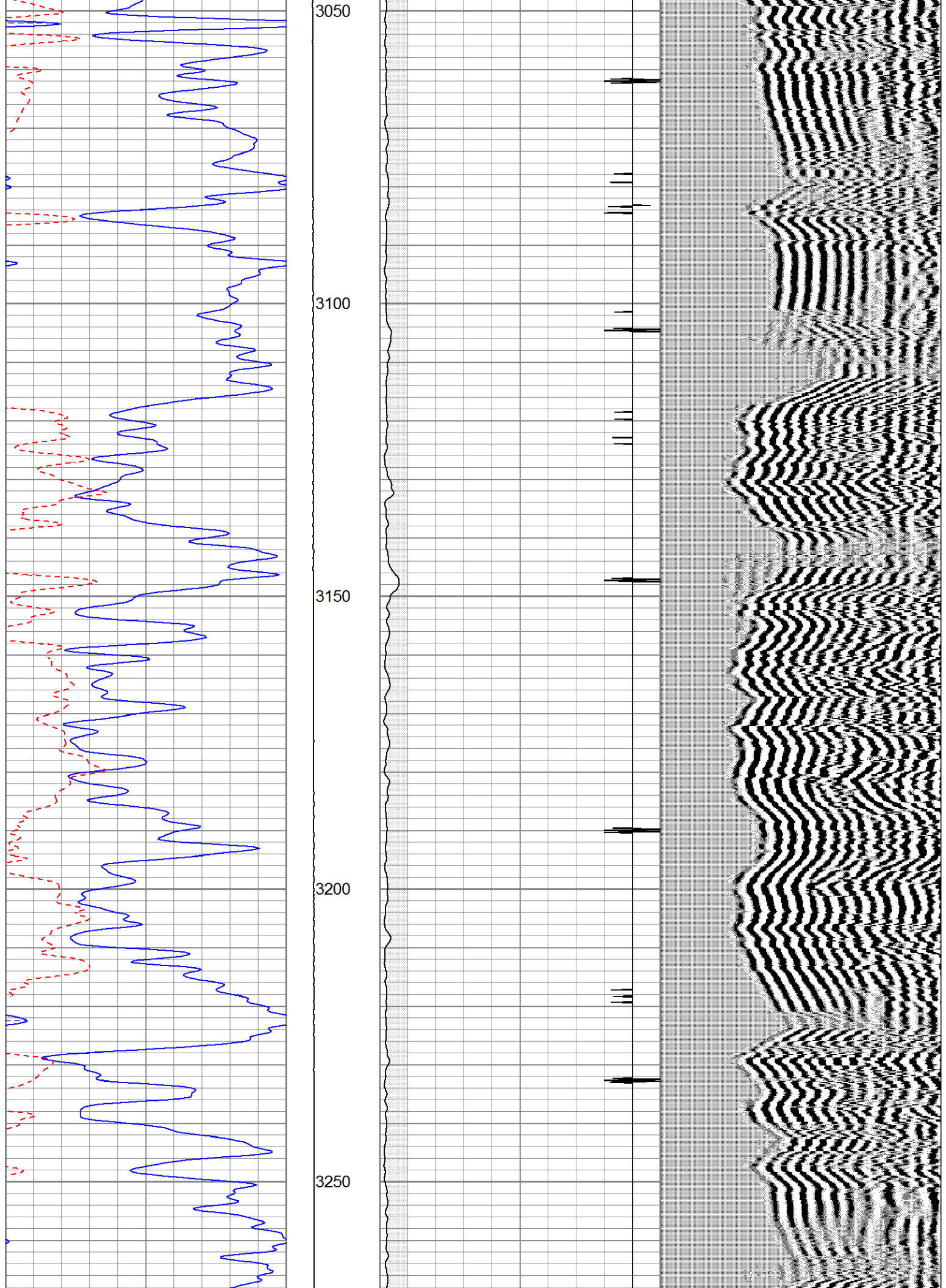


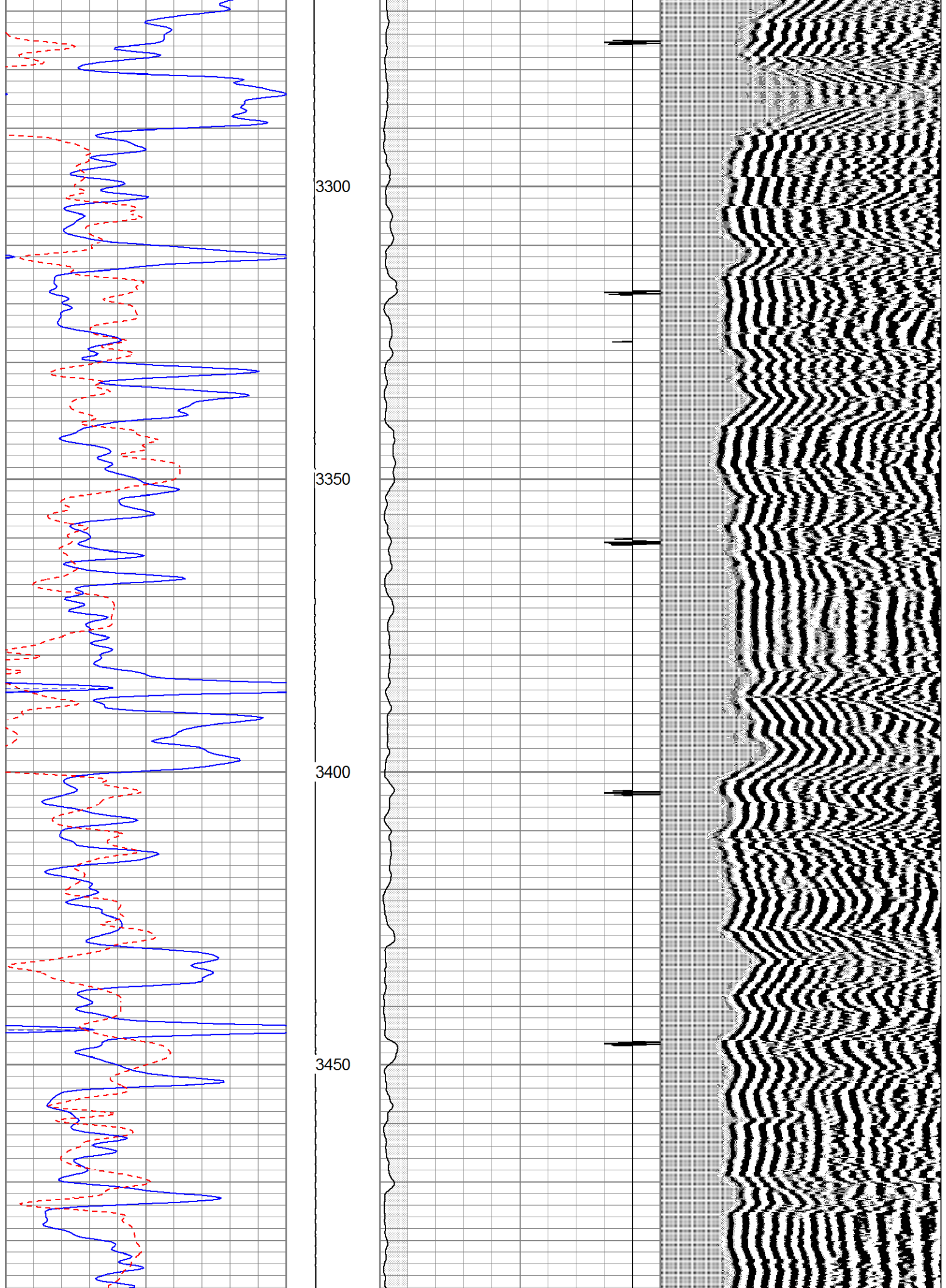
MAIN PASS

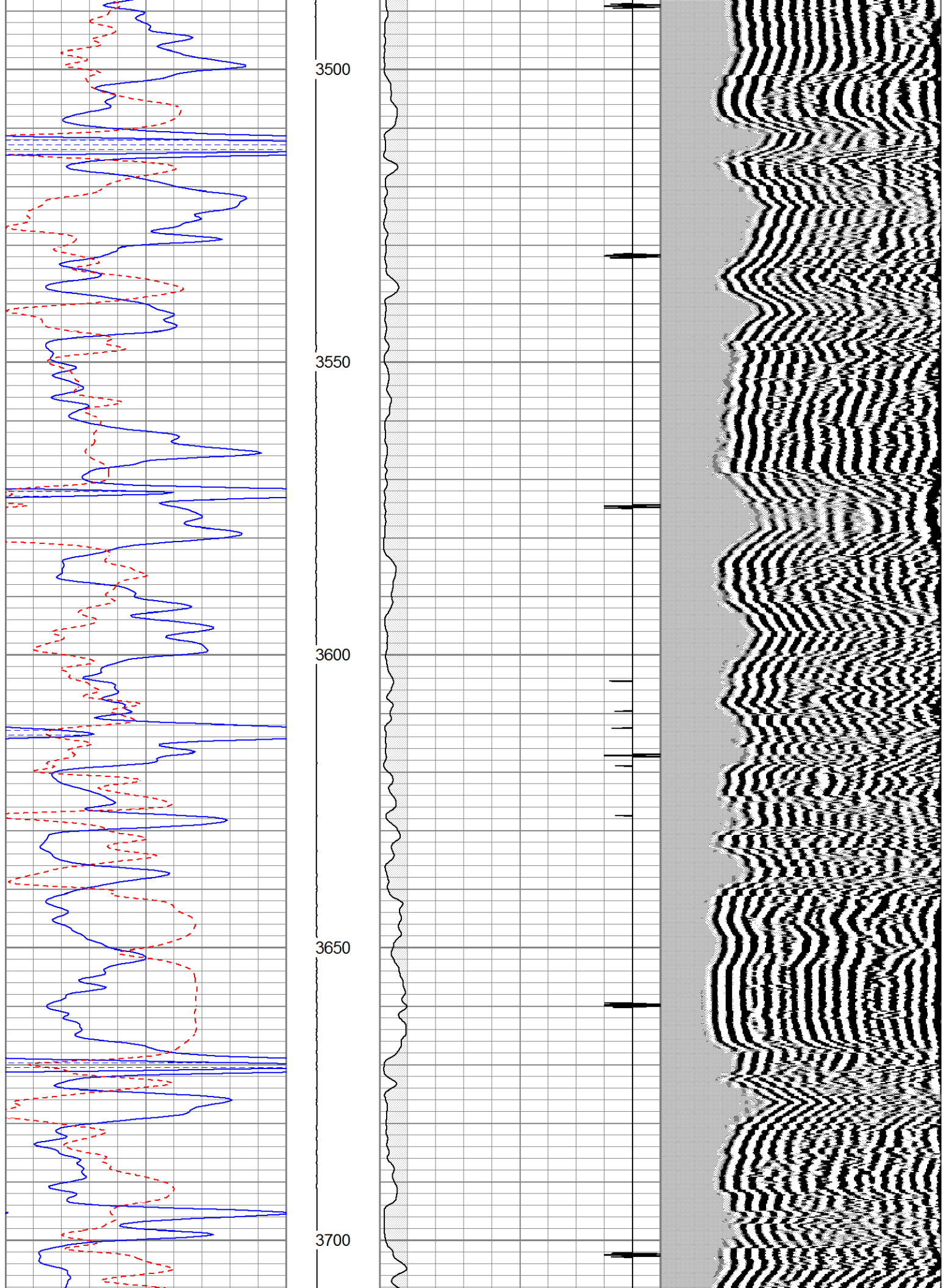
Database File: mjtoilschoenthaler5.db
 Dataset Pathname: pass3
 Presentation Format: cblsec
 Dataset Creation: Wed Apr 26 16:22:20 2023
 Charted by: Depth in Feet scaled 1:240



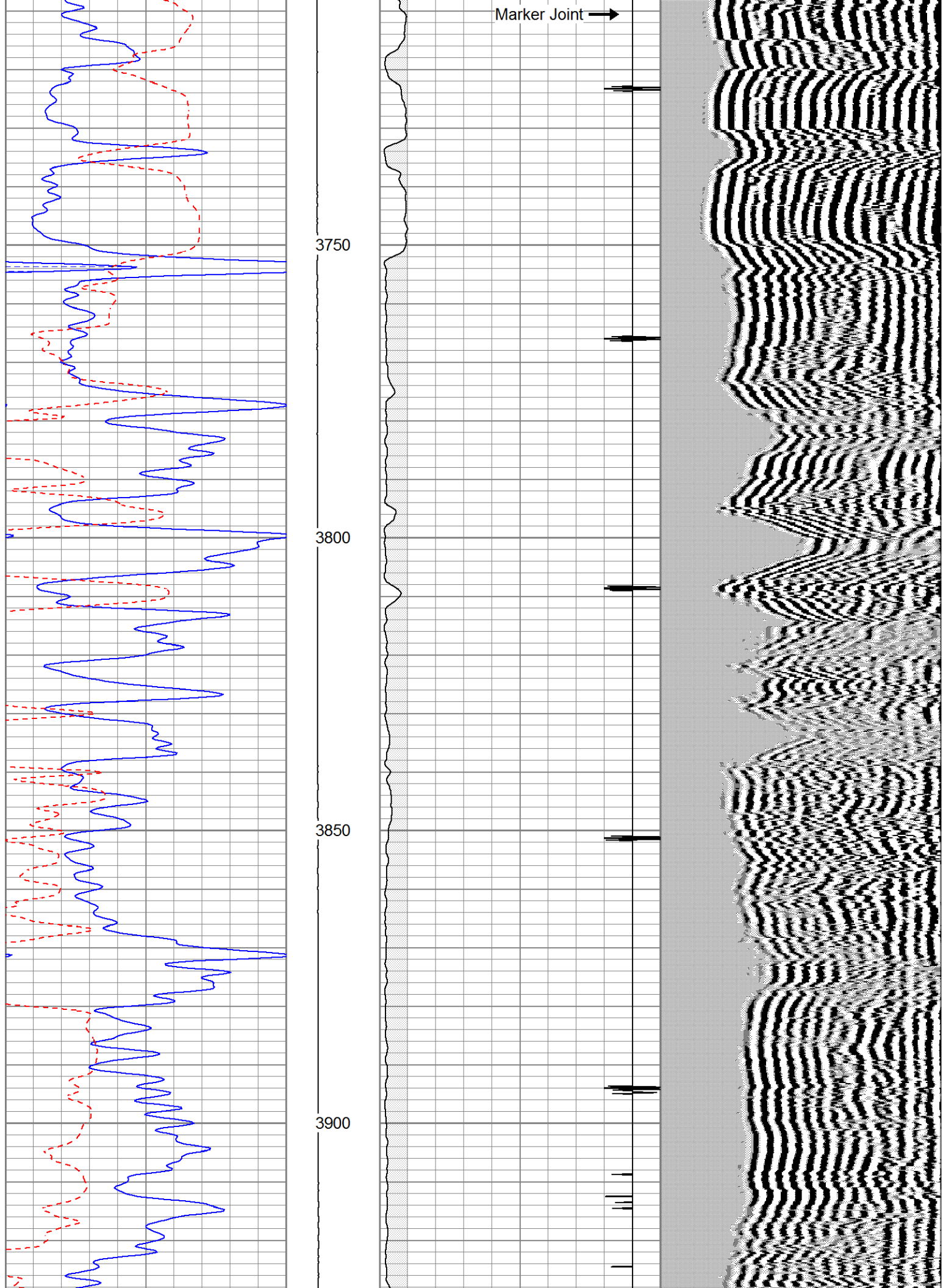


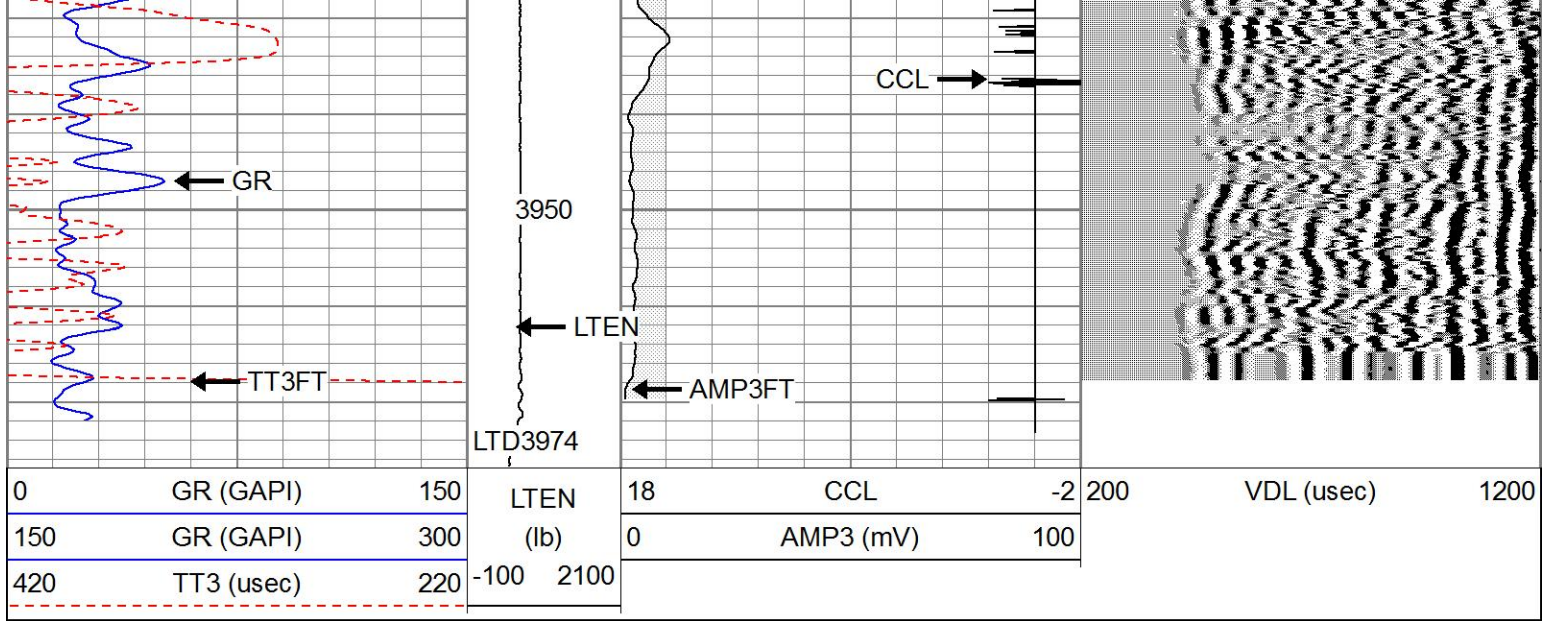






Marker Joint →

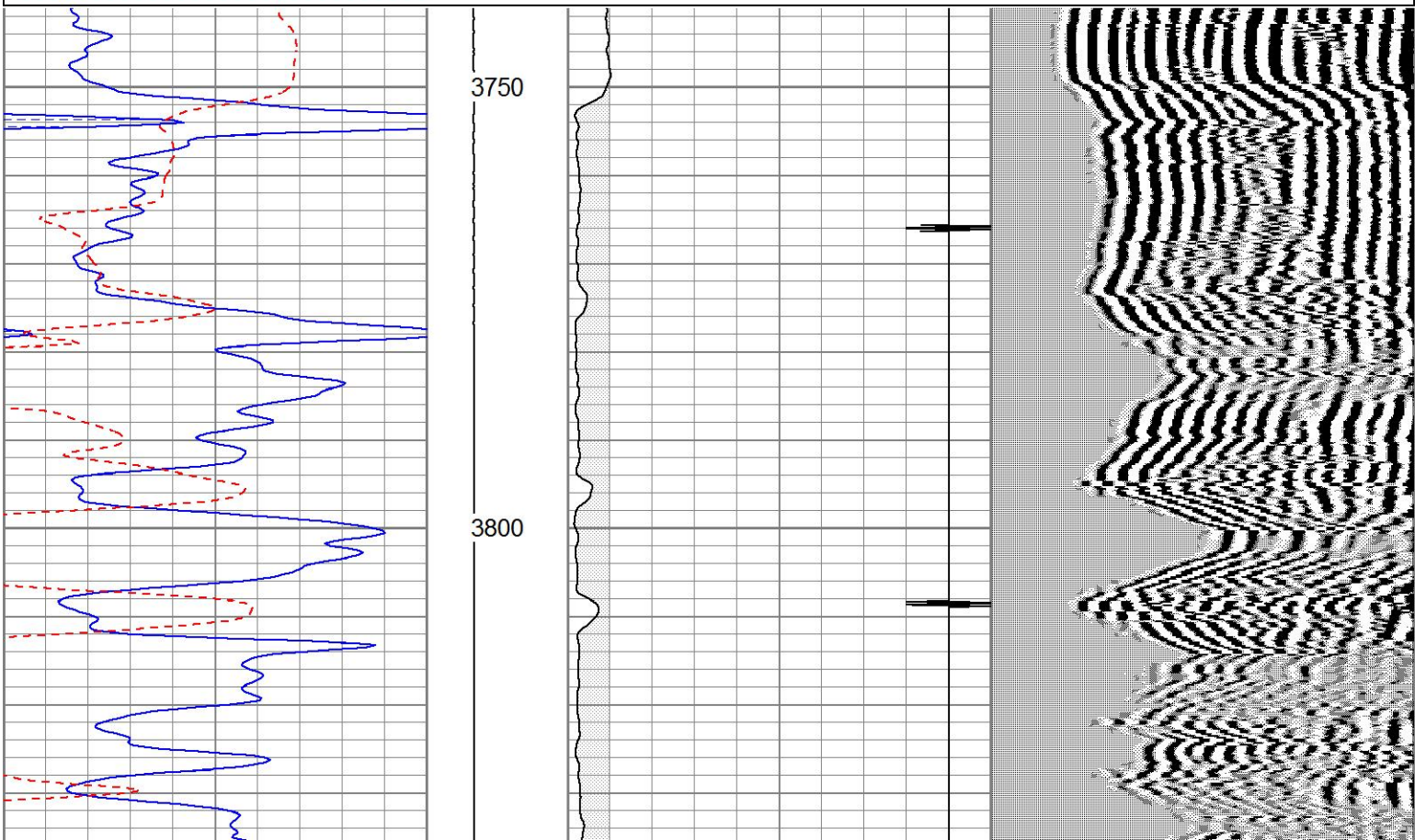


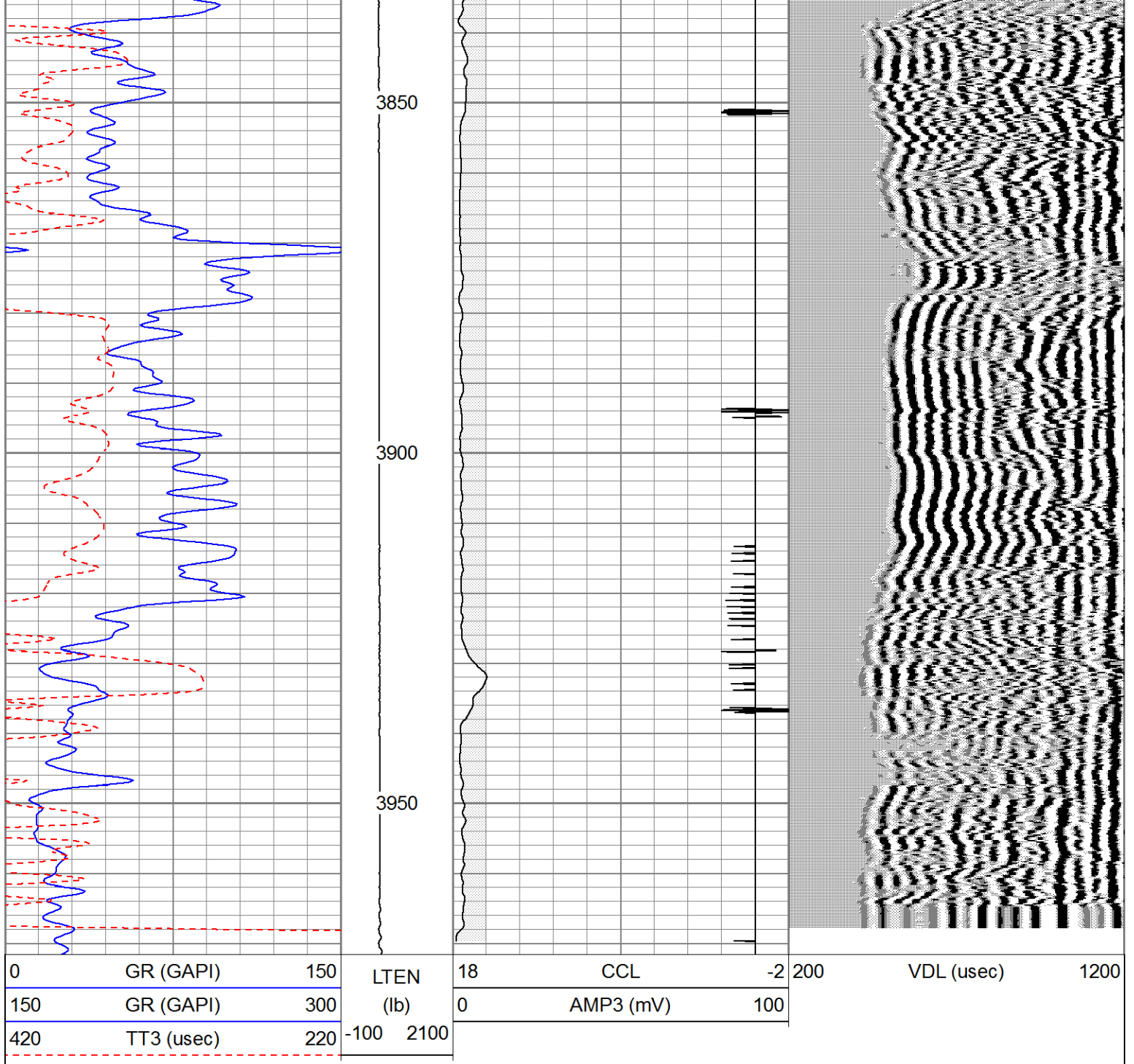


REPEAT SECTION

Database File mjtolschoenthaler5.db
 Dataset Pathname pass2
 Presentation Format cblsec
 Dataset Creation Wed Apr 26 16:15:47 2023
 Charted by Depth in Feet scaled 1:240

| | | | | | | | | | |
|-----|------------|-----|-----------|----|-----------|-----|-----|------------|------|
| 0 | GR (GAPI) | 150 | LTEN | 18 | CCL | -2 | 200 | VDL (usec) | 1200 |
| 150 | GR (GAPI) | 300 | (lb) | 0 | AMP3 (mV) | 100 | | | |
| 420 | TT3 (usec) | 220 | -100 2100 | | | | | | |





Calibration Report

Database File mjttoilschoenthaler5.db
 Dataset Pathname pass3
 Dataset Creation Wed Apr 26 16:22:20 2023

Gamma Ray Calibration Report

Serial Number: 080224
 Tool Model: Probe1
 Performed: Wed Mar 08 08:45:31 2023

Calibrator Value: 200.0 GAPI
 Background Reading: 15.0 cps
 Calibrator Reading: 222.7 cps

Sensitivity: 1.4000 GAPI/cps

Serial Number: 061007
 Tool Model: DigitalCBL
 Calibration Casing Diameter: 5.500 in
 Calibration Depth: -2797.445 ft

Master Calibration, performed Tue Nov 01 12:35:05 2022:

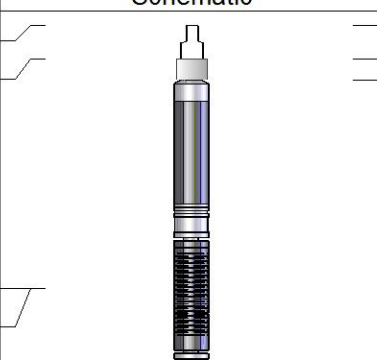
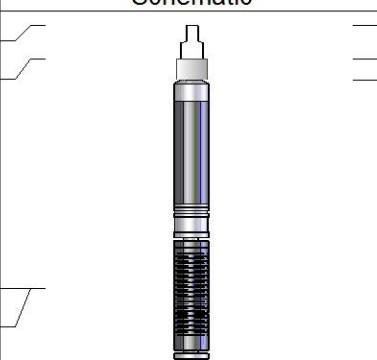
| | Raw (v) | | Calibrated (mv) | | Results | |
|-----|---------|-------|-----------------|--------|---------|--------|
| | Zero | Cal | Zero | Cal | Gain | Offset |
| 3' | 0.002 | 0.918 | 1.000 | 71.921 | 77.371 | 0.879 |
| CAL | | | | | | |
| 5' | 0.002 | 0.899 | 1.000 | 71.921 | 79.066 | 0.868 |
| SUM | | | | | | |
| S1 | | | | | | |
| S2 | | | | | | |
| S3 | | | | | | |
| S4 | | | | | | |
| S5 | | | | | | |
| S6 | | | | | | |
| S7 | | | | | | |
| S8 | | | | | | |

Internal Reference Calibration, performed (Not Performed):

| | Raw (v) | | Calibrated (v) | | Results | |
|-----|---------|-----|----------------|-----|---------|--------|
| | Zero | Cal | Zero | Cal | Gain | Offset |
| CAL | | | | | | |

Air Zero Calibration, performed Wed Nov 13 08:15:38 2019:

| | Raw (v) | | Calibrated (v) | | Results | |
|-----|---------|--|----------------|--|---------|--|
| | Zero | | Zero | | Offset | |
| 3' | 0.000 | | 0.000 | | 0.000 | |
| 5' | 0.000 | | 0.000 | | 0.000 | |
| SUM | | | | | | |
| S1 | | | | | | |
| S2 | | | | | | |
| S3 | | | | | | |
| S4 | | | | | | |
| S5 | | | | | | |
| S6 | | | | | | |
| S7 | | | | | | |
| S8 | | | | | | |

| Sensor | Offset (ft) | Schematic | Description | Length (ft) | O.D. (in) | Weight (lb) |
|--------|-------------|---|------------------------------|-------------|-----------|-------------|
| CHD | 14.93 |  | CHD-sdschd | 0.75 | 1.44 | 3.00 |
| CENT | 14.18 | | CENT-rub2 | 0.46 | 1.75 | |
| WVF5FT | 9.21 |  | Probedig-DigitalCBL (061007) | 8.77 | 2.75 | 92.00 |
| WVF3FT | 9.21 | | 2 3/4 Bond Tool | | | |

| | | | | | | |
|---------|------|--|------------------------------------|------|------|-------|
| CENT | 4.96 | | CENT-rub2 | 0.46 | 1.75 | |
| WVFSYNC | 4.96 | | CCL-Probe (080224) Probe 2 3/4" | 1.42 | 2.75 | 7.50 |
| CCL | 3.67 | | | | | |
| GR | 2.30 | | GR-Probe1 (080224) | 3.08 | 2.75 | 40.00 |

Dataset: mjoilschoenthaler5.db: field/well/run1/pass3
 Total length: 14.93 ft
 Total weight: 142.50 lb
 O.D.: 2.75 in