



MIDWEST WIRELINE

DUAL COMP POROSITY LOG

Company: Norstar Petroleum Inc.
 Well: BLU Unit #1-22
 Field: Unnamed
 County: Lyon
 State: Kansas

Company: Norstar Petroleum Inc.
 Well: BLU Unit #1-22
 Field: Unnamed
 County: Lyon
 State: Kansas

Location: API #: 15-111-20555-00-00
 1322' FNL & 2373' FEL
 SEC 22 TWP 16S RGE 11E
 Permanent Datum: Ground Level Elevation 1341'
 Log Measured From: Kelly Bushing
 Drilling Measured From: Kelly Bushing
 Other Services: DIL/MEL BHCs
 K.B. Elevation 1353'
 D.F. G.L. 1341'

Date	9/12/2021						
Run Number	One						
Type Log	CNL/CDL						
Depth Driller	3135'						
Depth Logger	3135'						
Bottom Logged Interval	3114'						
Top Logged Interval	2200'						
Type Fluid In Hole	Chemical						
Salinity, PPM CL	550						
Density	9.1						
Level	Full						
Max. Rec. Temp. F	107						
Operating Rig Time	4 Hours						
Equipment -- Location	P-24 HAYS						
Recorded By	D. Schmidt						
Witnessed By	Brad Rine						
Borehole Record							
Run No.	Bit	From	To	Size	Wgt.	From	To
One	12.25"	0	230'	8.625"	23#	0	230"
Two	7.875"	230'	TD				
Casing Record							

<<< Fold Here >>>

All interpretations are opinions based on inferences from electrical or other measurements and Midwest Wireline Services, LLC cannot and does not guarantee the accuracy or correctness of any interpretation, and Midwest Wireline Services, LLC will not be liable or responsible for any loss, costs, damages, or expenses incurred or sustained by anyone resulting from any interpretation made by any of our officers, agents or employees.

Comments

N/A DENOTES NOT AVAILABLE OR NON-APPLICABLE.

Allen,
 1/2 South on L Rd,
 West into

Log Measured From: Kelly Bushing 12 Ft. Above Permanent Datum

THANK YOU FOR USING MIDWEST WIRELINE LLC
 785-625-3858

Your Midwest Wireline Crew		This Log Record Was Witnessed By	
Engineer: D. Schmidt	Operator: C. McLaughlin	Primary Witness: Brad Rine	Secondary Witness:
Operator:	Operator:	Secondary Witness:	Secondary Witness:

Sensor	Offset (ft)	Schematic	Description	Length (ft)	O.D. (in)	Weight (lb)
GR	33.00		GR-M&W (233-M&W)	3.00	3.50	50.00
CNLSC	29.90		CNT-M&W (207-MW)	5.50	3.50	100.00
CNSSC	29.15					
			CDL-M&W (126-4040)	8.50	4.00	250.00
LSD	20.85					
DCAL	20.83					
SSD	20.35					
RLL3F	15.80					
RLL3	15.80					
			DIL-PSI HIGH TEMP (952-828)	18.50	3.50	220.00
CILD	8.00					
CILM	4.70					
SP	0.20					

Dataset: norstar_blu1-22.db: field/well/stack/pass3.4
 Total length: 35.50 ft
 Total weight: 620.00 lb
 O.D.: 4.00 in

Log Variables

DatabaseC:\ProgramData\Warrior\Data\norstar_blu1-22.db
Dataset field/well/stack/pass3.4/_vars_

Top - Bottom

A	BOREID in	BOTTEMP degF	CASEOD in	CASETHCK in	FLUIDDEN g/cc	M	MATRXDEN g/cc
1	7.875	107	5.5	0	1	2	2.71
NPORSEL	PERFS	SNDERR mmho/m	SNDERRM mmho/m	SPSHIFT mV	SRFTEMP degF	SZCOR	TDEPTH ft
Limestone	0	0	0	115	80	Off	3135

Variable Description

A : Cement Factor (a)
BOREID : Borehole I.D.
BOTTEMP : Bottom Hole Temperature
CASEOD : Casing O.D.
CASETHCK : Casing Thickness
FLUIDDEN : Fluid Density
M : Cement Exp (m)
MATRXDEN : Matrix Density

NPORSEL : Neutron Porosity Curve Select
PERFS : Perforation Flag
SNDERR : Deep Sonde Error Correction
SNDERRM : Medium Sonde Error Correction
SPSHIFT : S.P. Baseline Offset
SRFTEMP : Surface Temperature
SZCOR : CN Size Cor. ?
TDEPTH : Total Depth



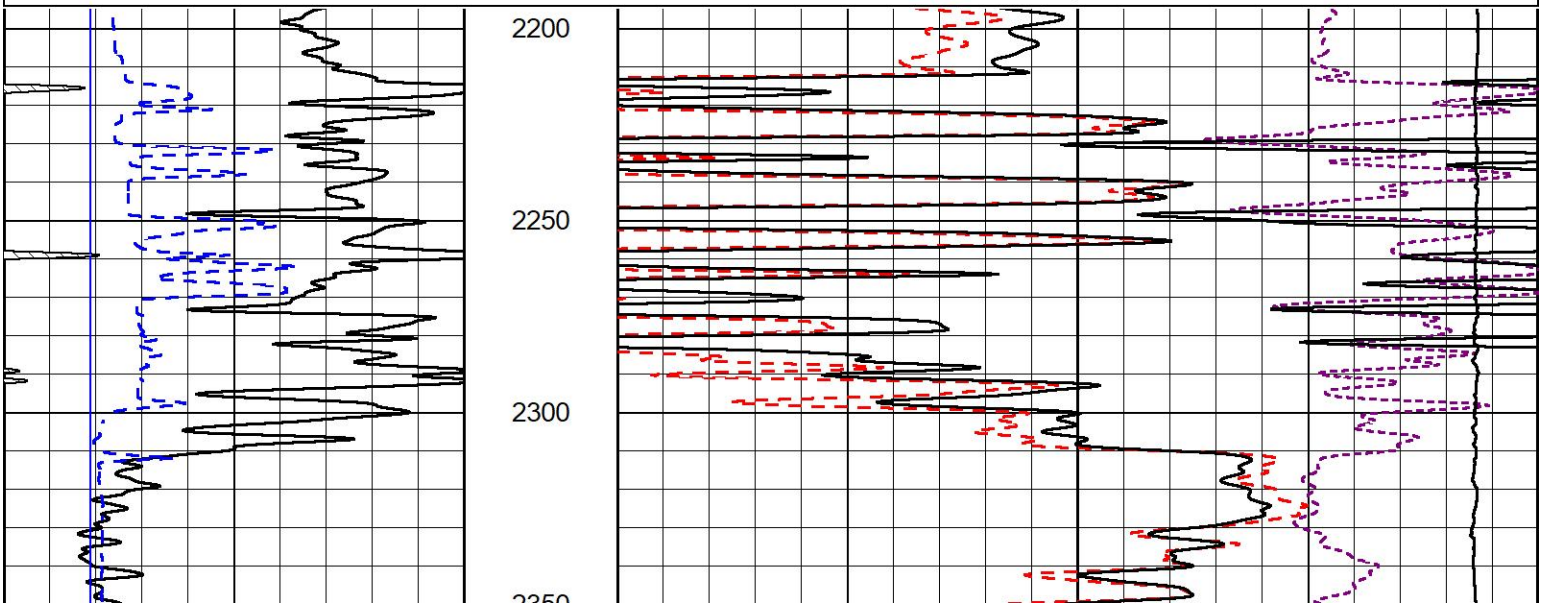
2" SCALE BULK DENSITY

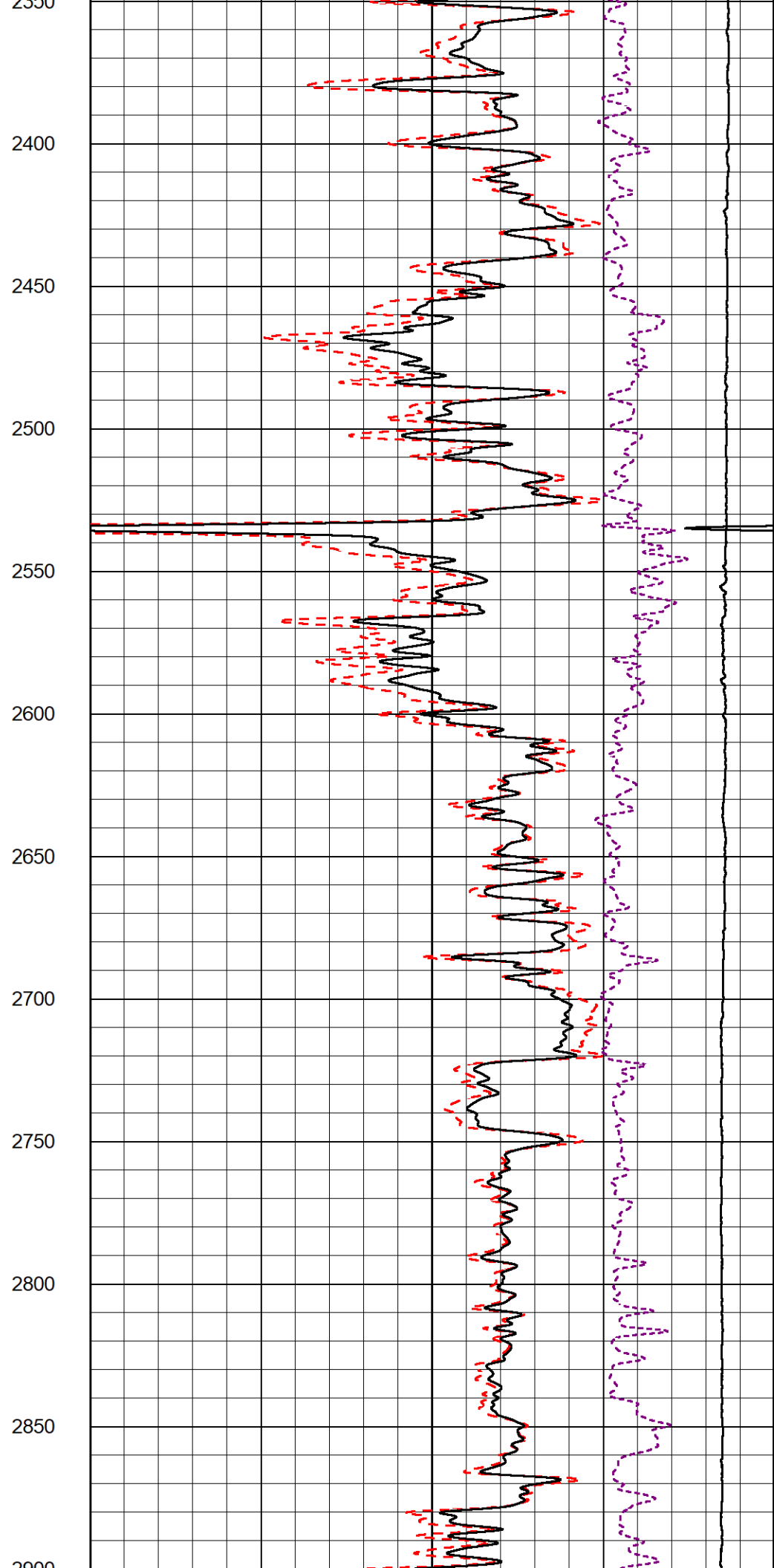
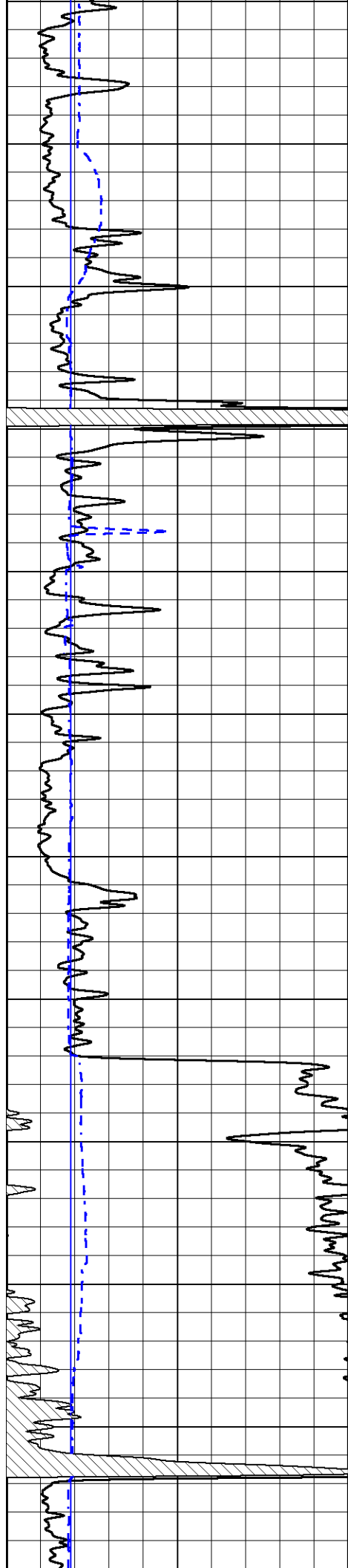
MAIN PASS

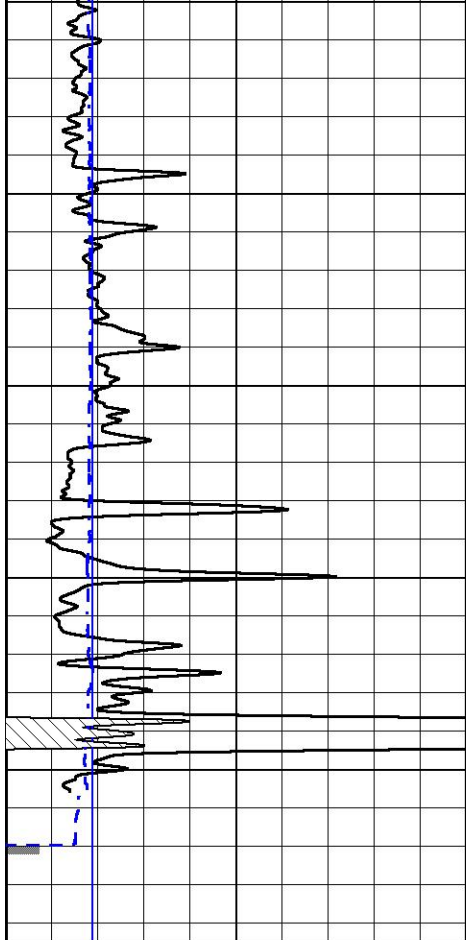
Database File norstar_blu1-22.db
Dataset Pathname stack/pass4.1
Presentation Format _cdl
Dataset Creation Sun Sep 12 04:13:20 2021
Charted by Depth in Feet scaled 1:600

0	GAMMA RAY (GAPI)	150
6	DCAL (in)	16

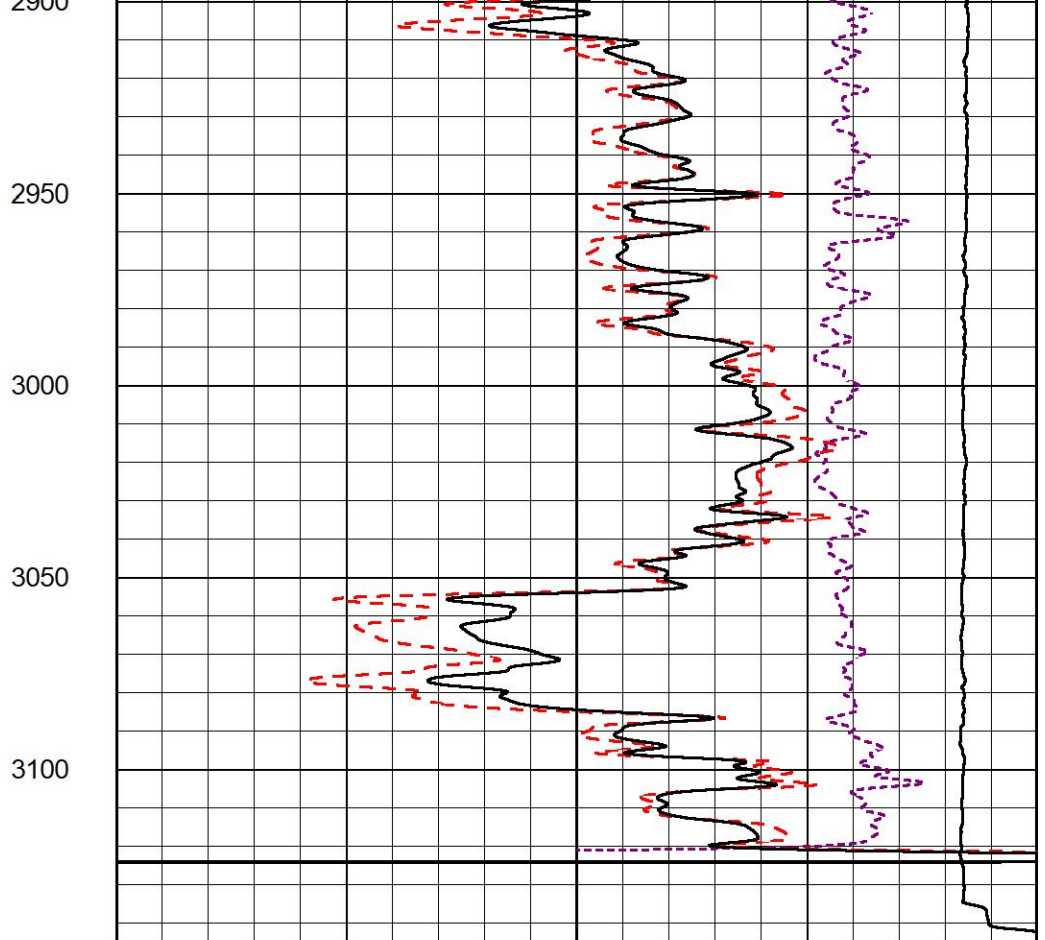
COMPENSATED DENSITY (2.65 MA)	
30	(pu) -10
2	BULK DENSITY (g/cc) 3
15000	LINE TENSION (lb) 0
-0.25	CORRECTION (g/cc) 0.25







0 GAMMA RAY (GAPI) 150
 6 DCAL (in) 16



COMPENSATED DENSITY
 (2.65 MA)

30	(pu)	-10
2	BULK DENSITY (g/cc)	3
15000	LINE TENSION (lb)	0
-0.25	CORRECTION (g/cc)	0.25



MIDWEST WIRELINE

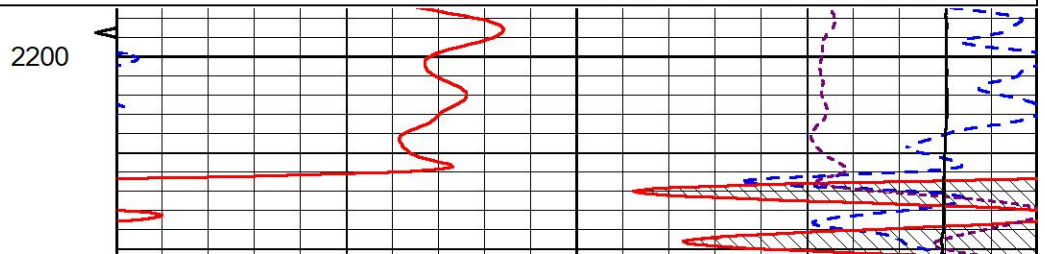
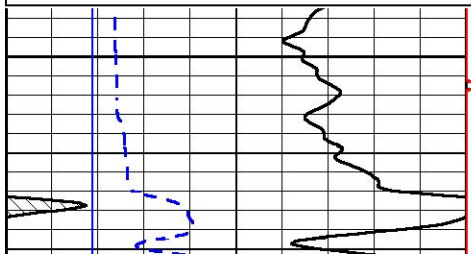
DETAIL SECTION

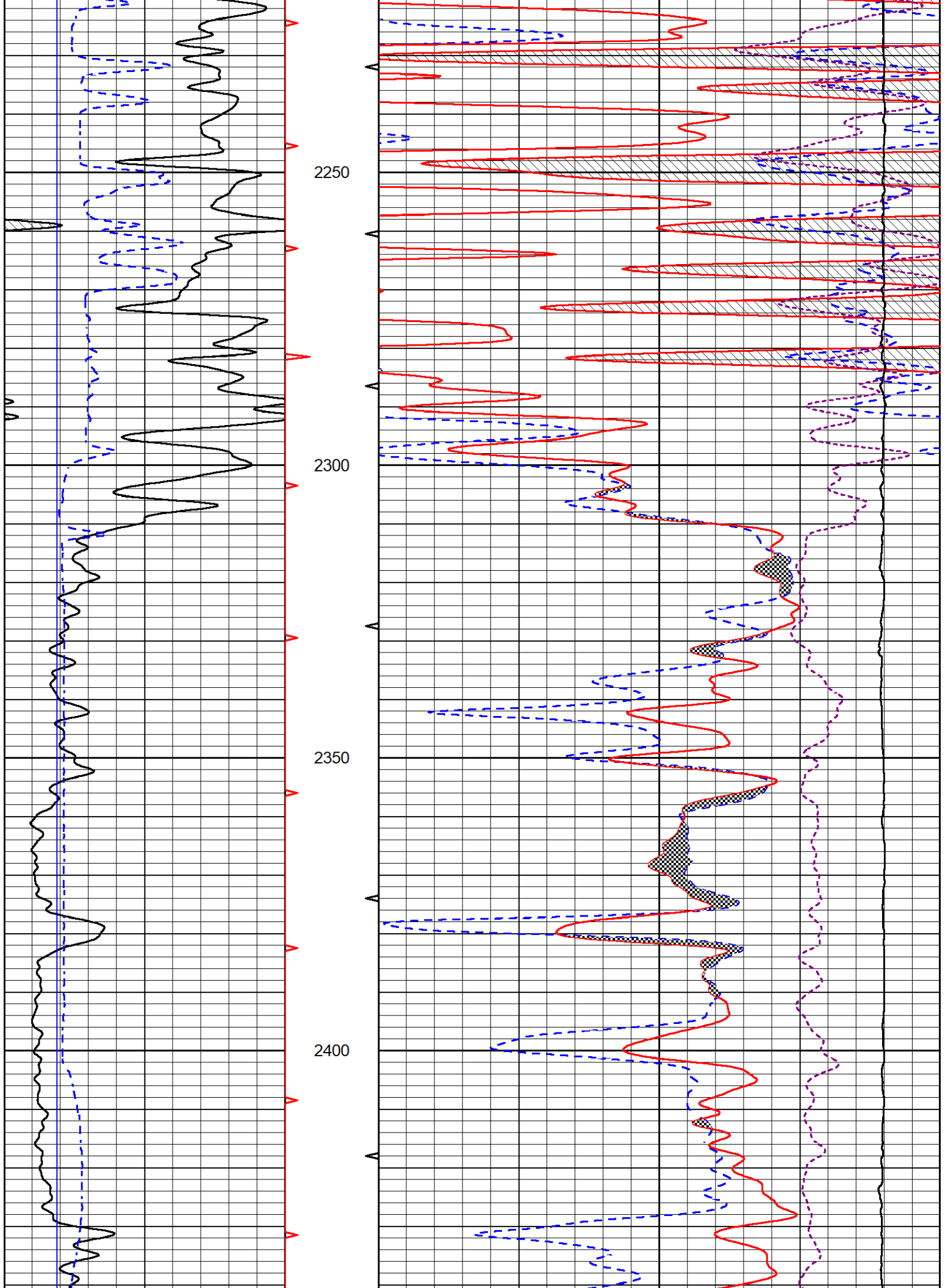
MAIN PASS

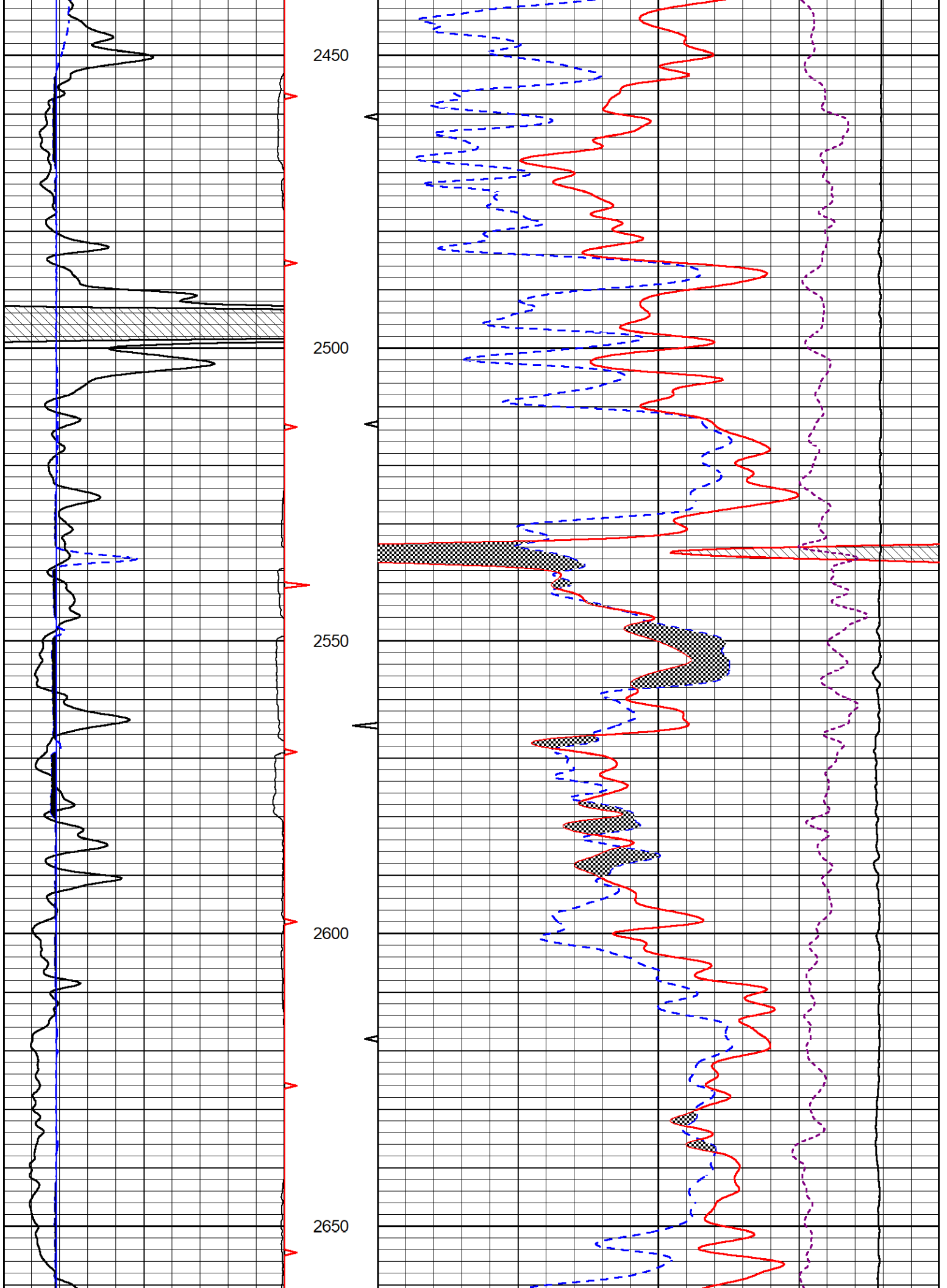
Database File norstar_blu1-22.db
 Dataset Pathname stack/pass3.1
 Presentation Format _CNDLS~1
 Dataset Creation Sun Sep 12 04:07:32 2021
 Charted by Depth in Feet scaled 1:240

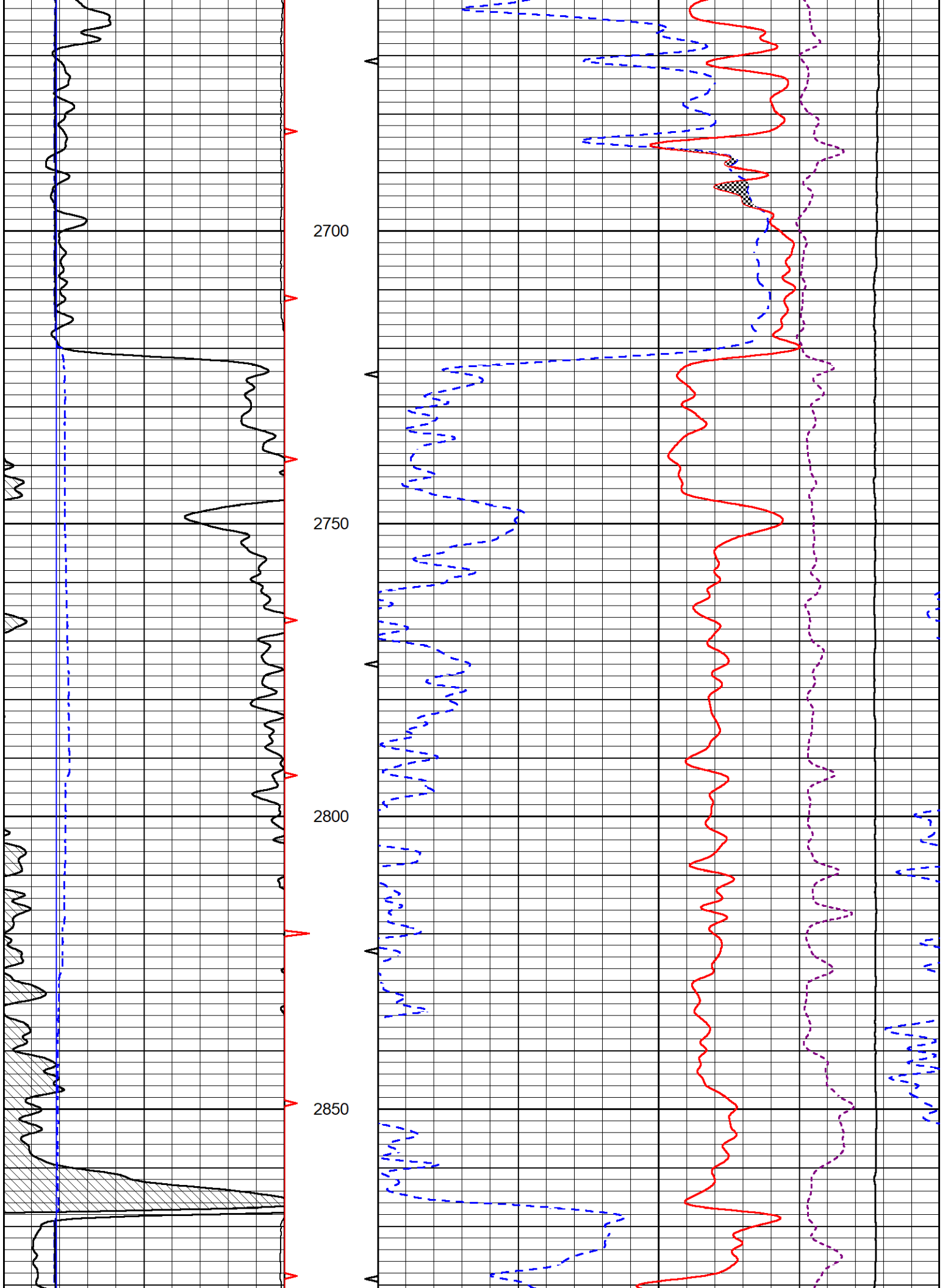
0 GAMMA RAY (GAPI) 150
 6 DCAL (in) 16

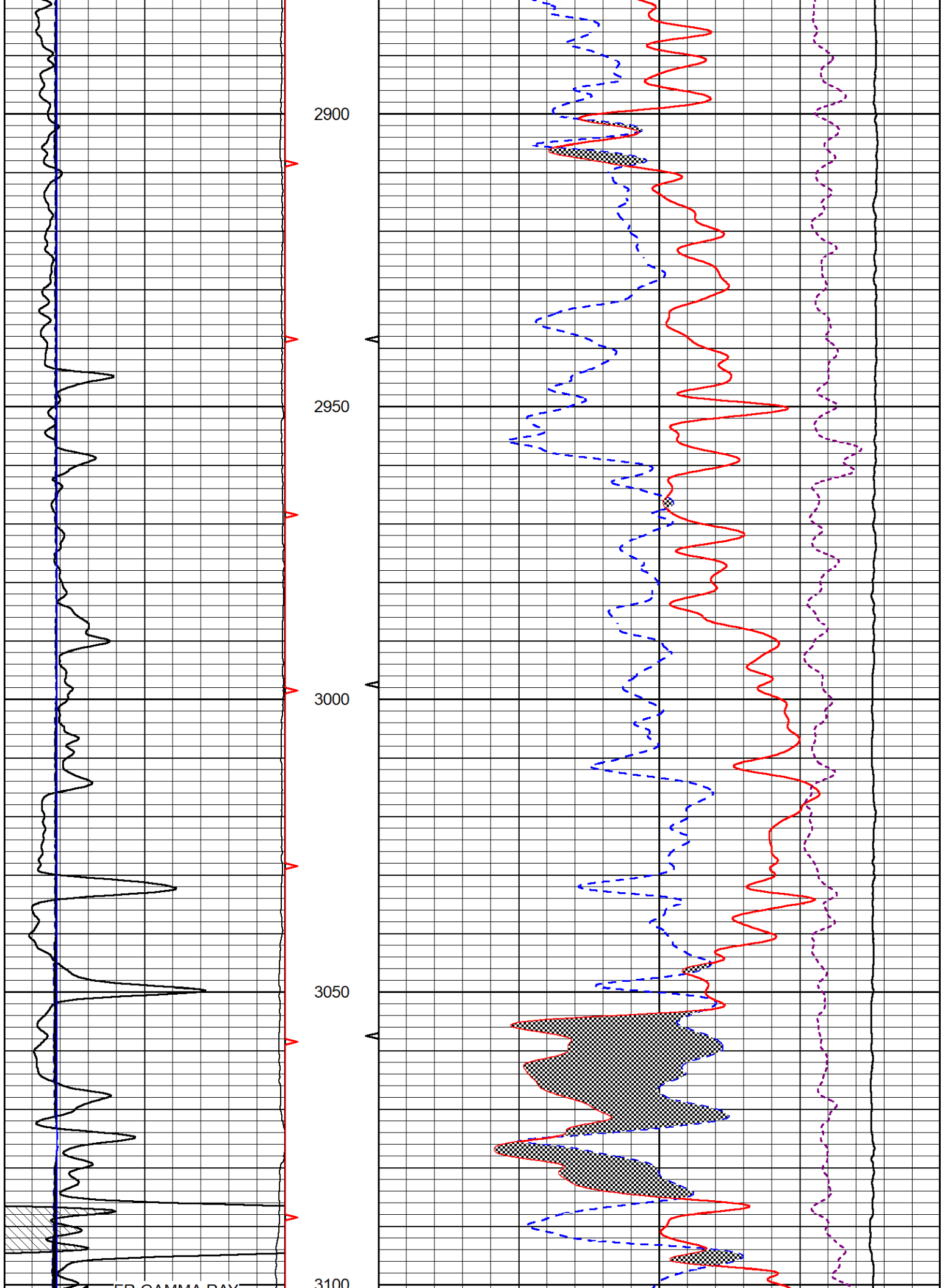
30	CNPOR (pu)	-10
30	DPOR (pu)	-10
10000	LINE TENSION (lb)	0
-0.25	CORRECTION (g/cc)	0.25

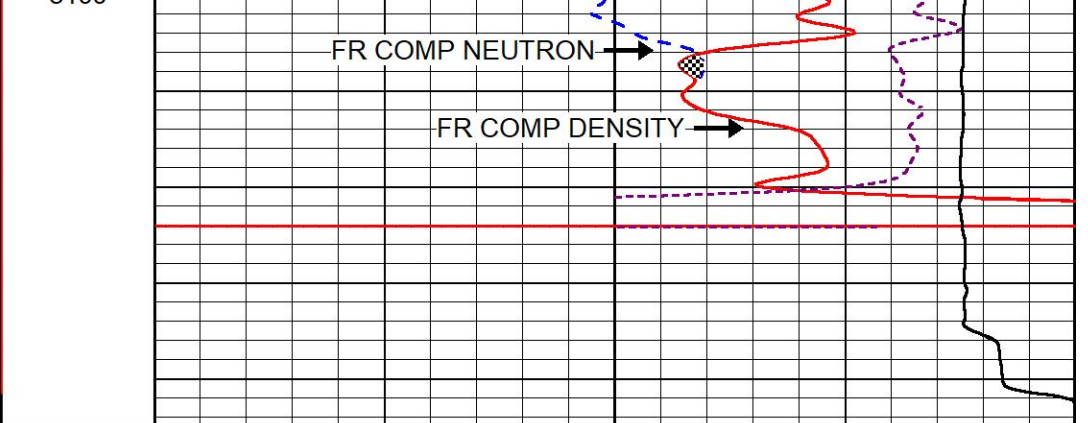
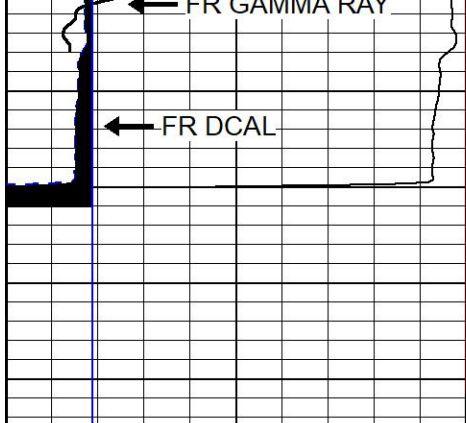












0	GAMMA RAY (GAPI)	150
6	DCAL (in)	16

30	CNPOR (pu)	-10
30	DPOR (pu)	-10
10000	LINE TENSION (lb)	0
-0.25	CORRECTION (g/cc)	0.25



MIDWEST WIRELINE

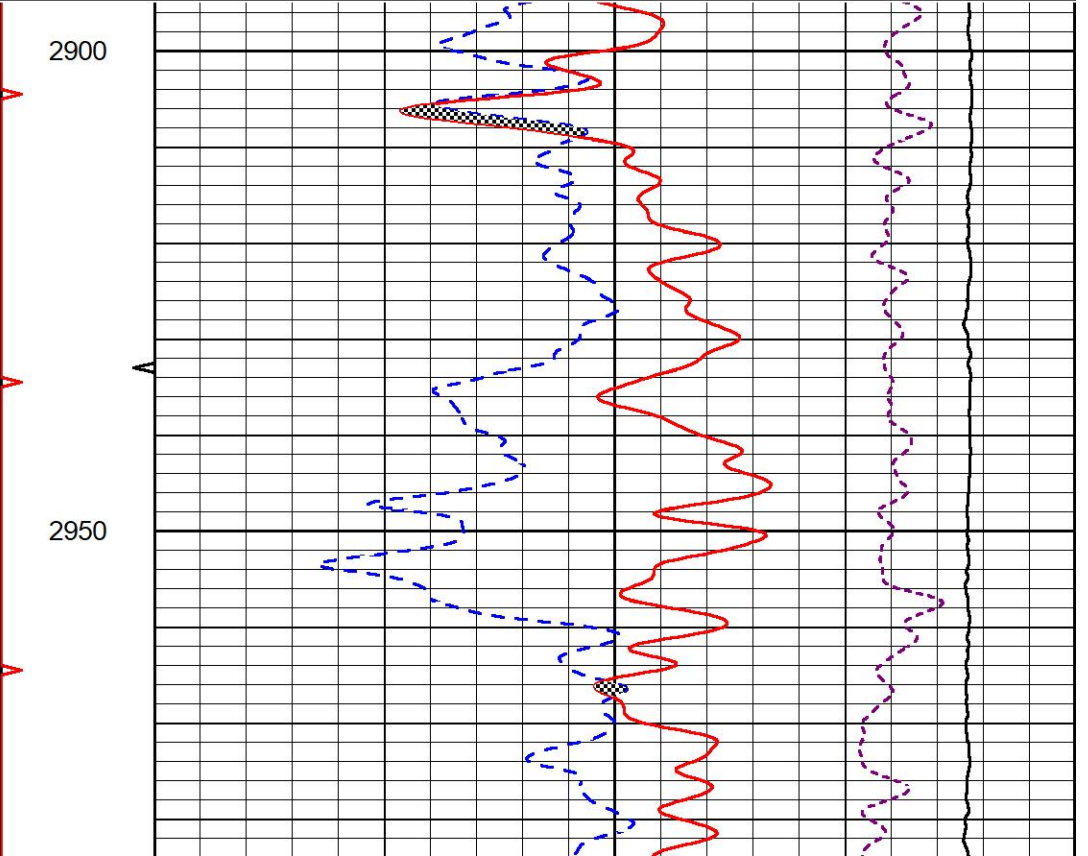
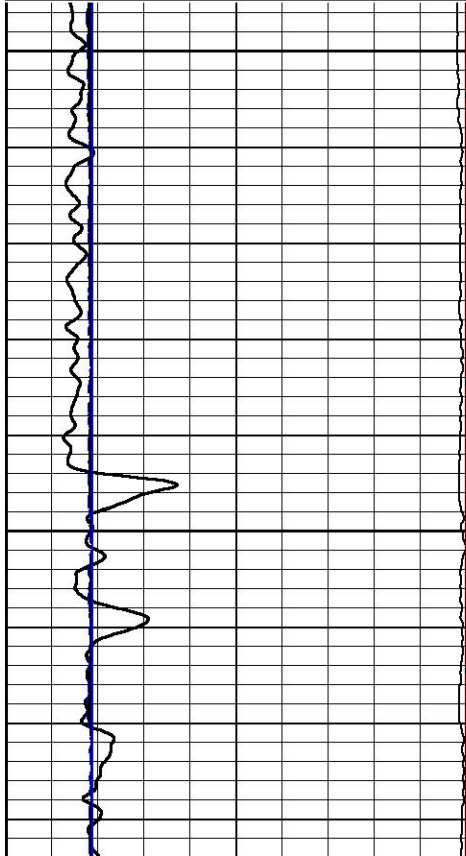
REPEAT SECTION

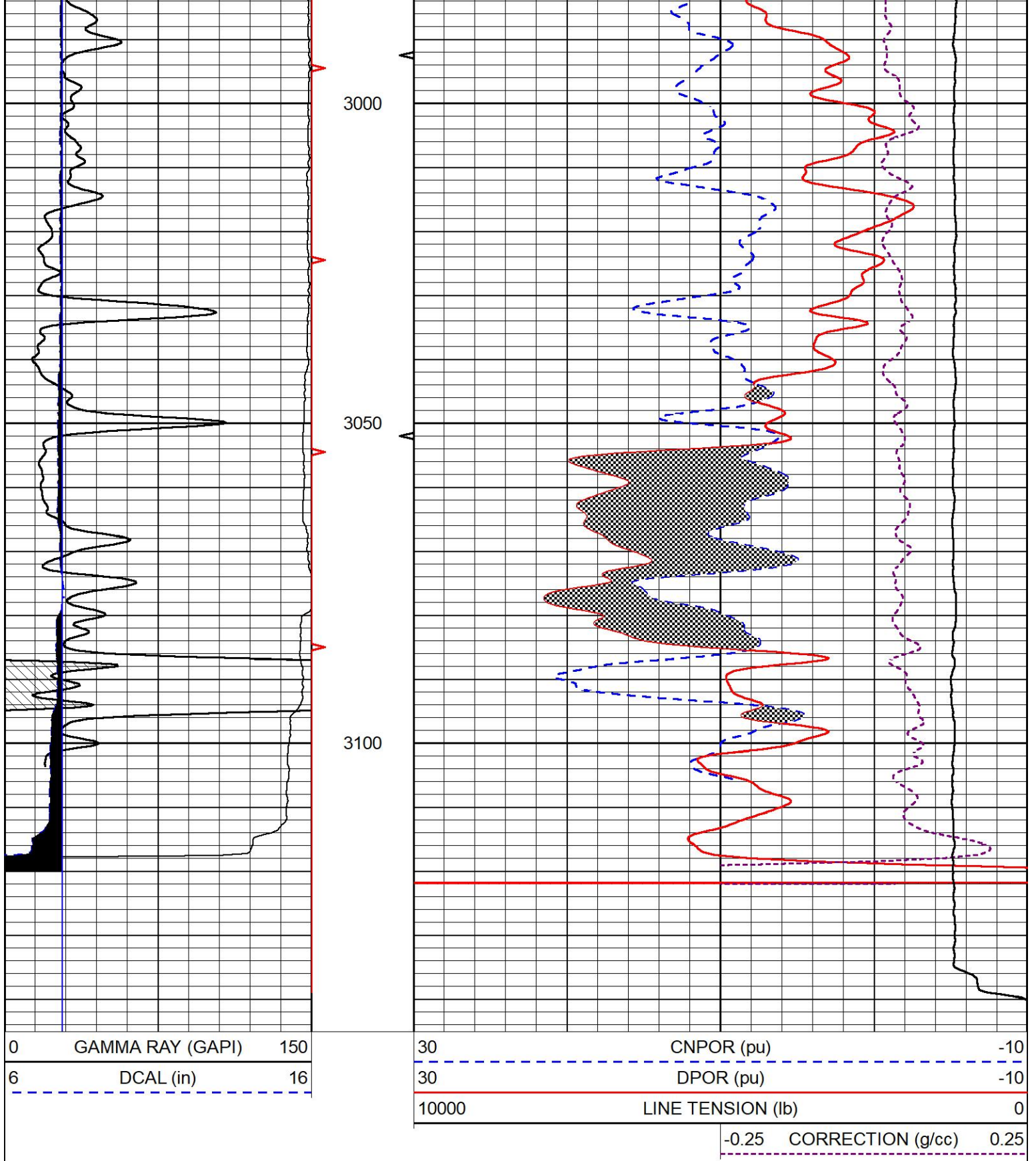
REPEAT PASS

Database File norstar_blu1-22.db
 Dataset Pathname stack/pass2.1
 Presentation Format _CNDLS~1
 Dataset Creation Sun Sep 12 03:45:46 2021
 Charted by Depth in Feet scaled 1:240

0	GAMMA RAY (GAPI)	150
6	DCAL (in)	16

30	CNPOR (pu)	-10
30	DPOR (pu)	-10
10000	LINE TENSION (lb)	0
-0.25	CORRECTION (g/cc)	0.25





Company Norstar Petroleum Inc.
 Well BLU Unit #1-22
 Field Unnamed
 County Lyon
 State Kansas