



MIDWEST WIRELINE

BOREHOLE COMPENSATED SONIC LOG

Company Norstar Petroleum Inc.
Well BLU Unit #1-22
Field Unnamed
County Lyon **State** Kansas

Company Norstar Petroleum Inc.
 Well BLU Unit #1-22
 Field Unnamed
 County Lyon
 State Kansas

Location: API #: 15-111-20555-00-00
 1322' FNL & 2373' FEL
 SEC 22 TWP 16S RGE 11E
 Other Services: CNL/CDL DIL/MEL

Date		9/12/2021		Run Number		Two	
Type Log		BHGS		Depth Driller		3135'	
Depth Driller		3135'		Depth Logger		3135'	
Bottom Logged Interval		3123'		Top Logged Interval		200'	
Type Fluid In Hole		Chemical		Salinity, PPM CL		550	
Density		9.1		Level		Full	
Max. Rec. Temp. F		107		Operating Rig Time		4 Hours	
Equipment -- Location		P-24 HAYS		Recorded By		D. Schmidt	
Witnessed By		Brad Rine		C. McLaughlin			
Borehole Record				Casing Record			
Run No.	Bit	From	To	Size	Wgt.	From	To
One	12.25"	0	230'	8.625"	23#	0	230"
Two	7.875"	230'	TD				

<<< Fold Here >>>

All interpretations are opinions based on inferences from electrical or other measurements and Midwest Wireline LLC cannot and does not guarantee the accuracy or correctness of any interpretation, and Midwest Wireline LLC will not be liable or responsible for any loss, costs, damages, or expenses incurred or sustained by anyone resulting from any interpretation made by any of our officers, agents or employees.

Comments

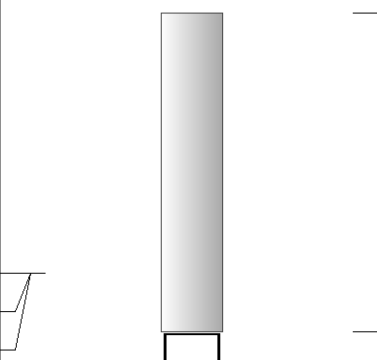
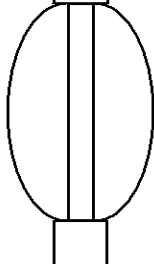
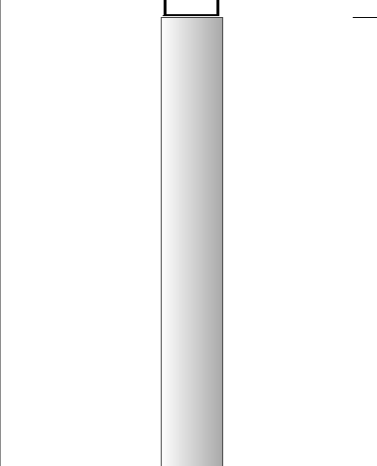
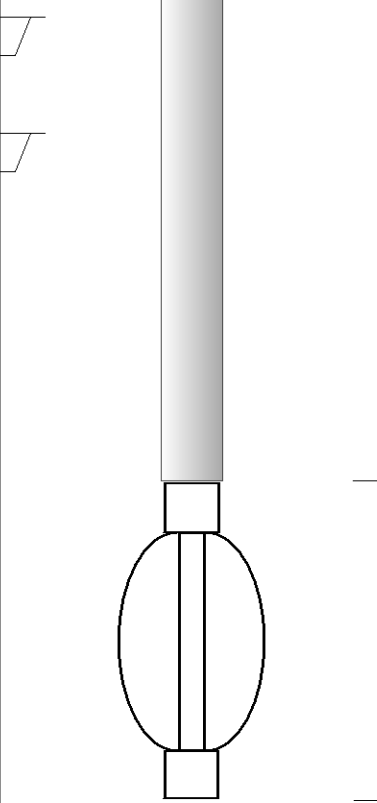
N/A DENOTES NOT AVAILABLE OR NON-APPLICABLE.

Allen,
 1/2 South on L Rd,
 West into

Log Measured From: Kelly Bushing 12 Ft. Above Permanent Datum

THANK YOU FOR USING MIDWEST WIRELINE LLC
 785-625-3858

Your Midwest Wireline Crew Engineer: D. Schmidt Operator: Operator: Operator:	This Log Record Was Witnessed By Primary Witness: Brad Rine Secondary Witness: Secondary Witness: Secondary Witness:
--	---

Sensor	Offset (ft)	Schematic	Description	Length (ft)	O.D. (in)	Weight (lb)
MCAL MI MN	28.00 28.00 28.00		ML-Pengo (Pengo3)	5.50	3.50	100.00
			CENT-PENGO (4-PENGO)	5.50	3.00	70.00
WVF4 WVF1	13.50 13.50		SLT-PENGO (0001)	16.00	3.50	300.00
WVF3 WVF2	11.50 11.50		CENT-PENGO (3-PENGO)	5.50	3.00	70.00

Dataset: norstar_blu1-22.db: field/well/sonmel/pass3
 Total length: 32.50 ft
 Total weight: 540.00 lb
 O.D.: 3.50 in

Log Variables

DatabaseC:\ProgramData\Warrior\Data\norstar_blu1-22.db
Dataset field/well/stack/pass4.1/_vars_

Top - Bottom

A	BOREID in	BOTTEMP degF	CASEOD in	CASETHCK in	FLUIDDEN g/cc	M	MATRXDEN g/cc
1	7.875	107	5.5	0	1	2	2.71
NPORSEL	PERFS	SNDERR mmho/m	SNDERRM mmho/m	SPSHIFT mV	SRFTEMP degF	SZCOR	TDEPTH ft
Limestone	0	0	0	115	80	Off	3135

Variable Description

A : Cement Factor (a)
BOREID : Borehole I.D.
BOTTEMP : Bottom Hole Temperature
CASEOD : Casing O.D.
CASETHCK : Casing Thickness
FLUIDDEN : Fluid Density
M : Cement Exp (m)
MATRXDEN : Matrix Density

NPORSEL : Neutron Porosity Curve Select
PERFS : Perforation Flag
SNDERR : Deep Sonde Error Correction
SNDERRM : Medium Sonde Error Correction
SPSHIFT : S.P. Baseline Offset
SRFTEMP : Surface Temperature
SZCOR : CN Size Cor. ?
TDEPTH : Total Depth

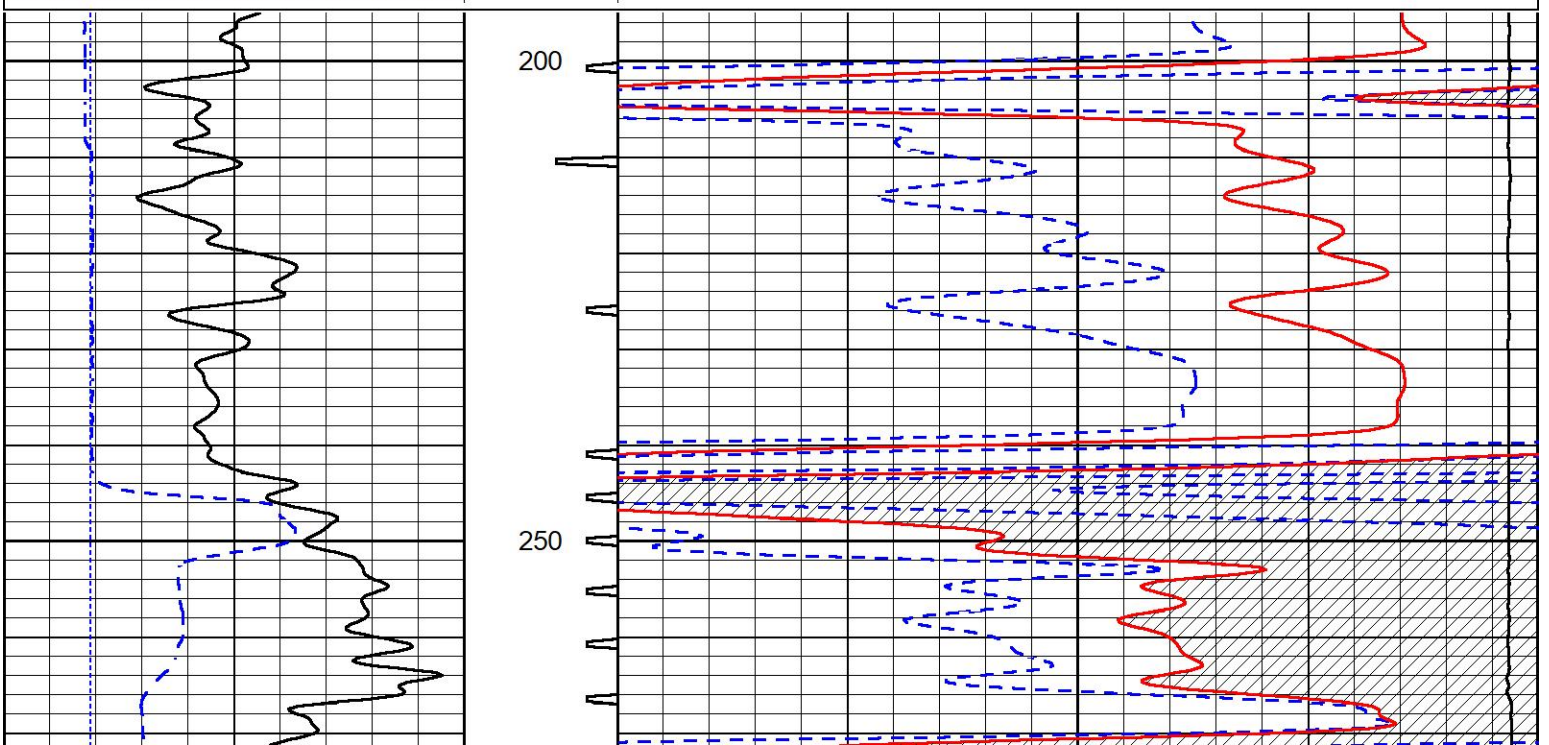


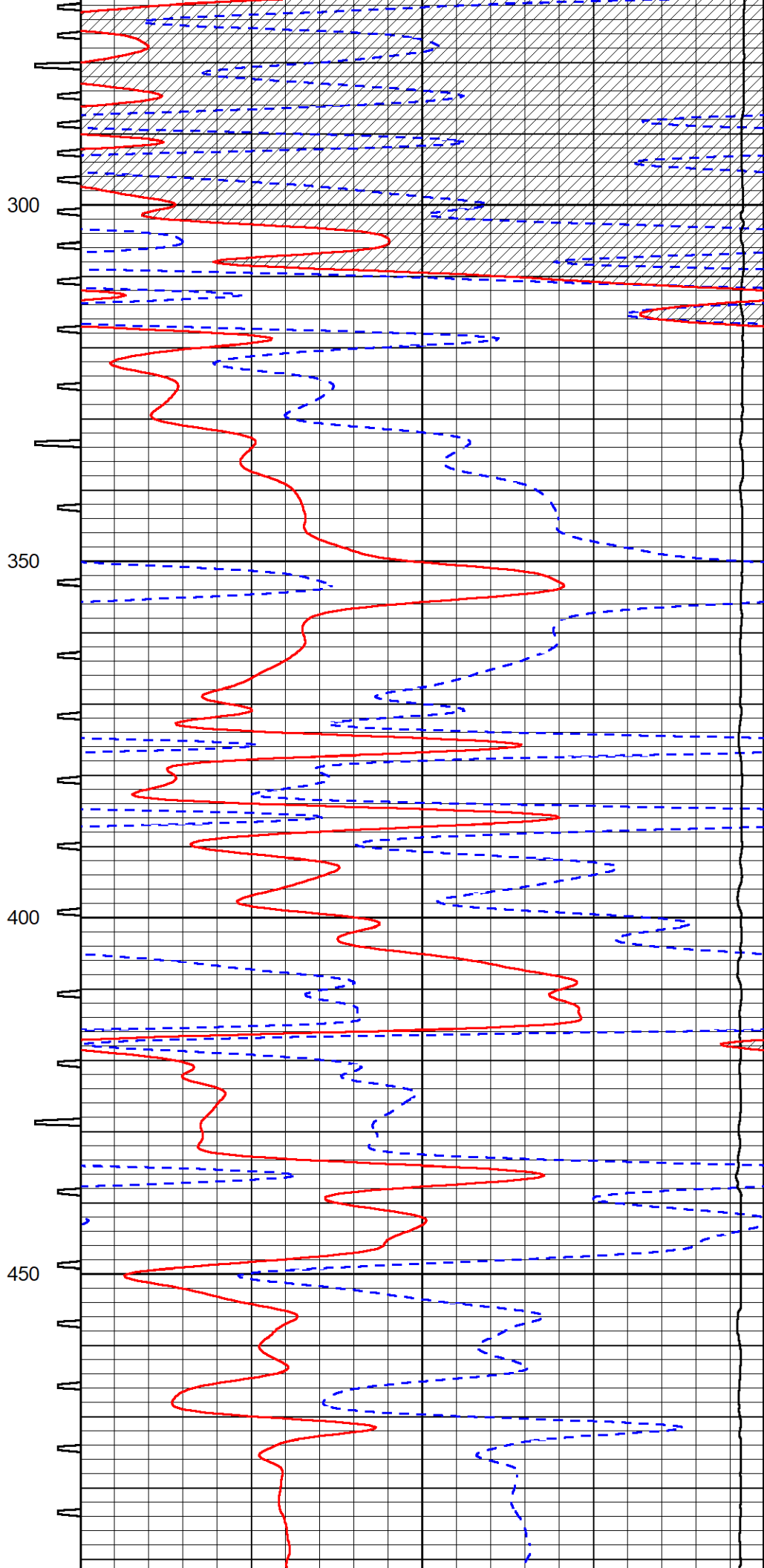
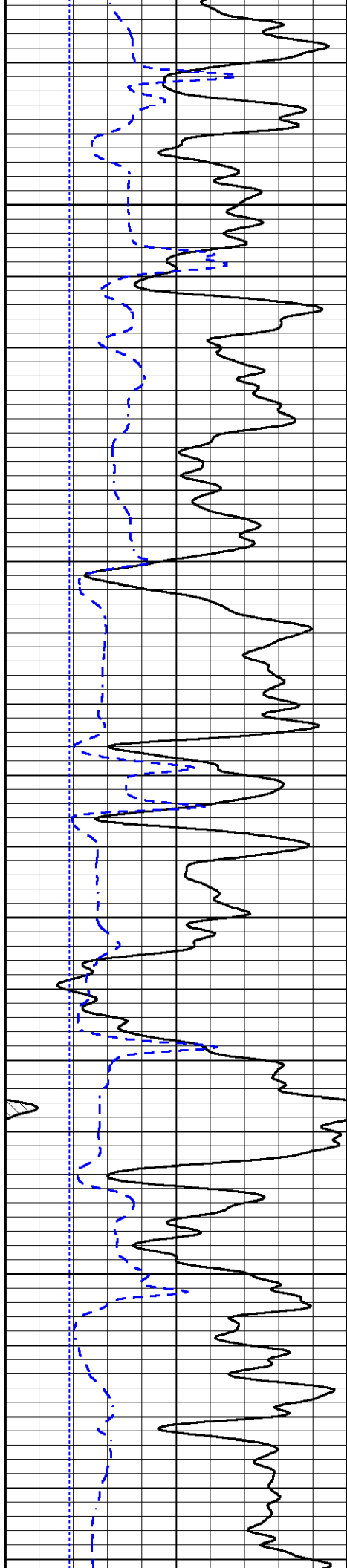
DETAIL SECTION

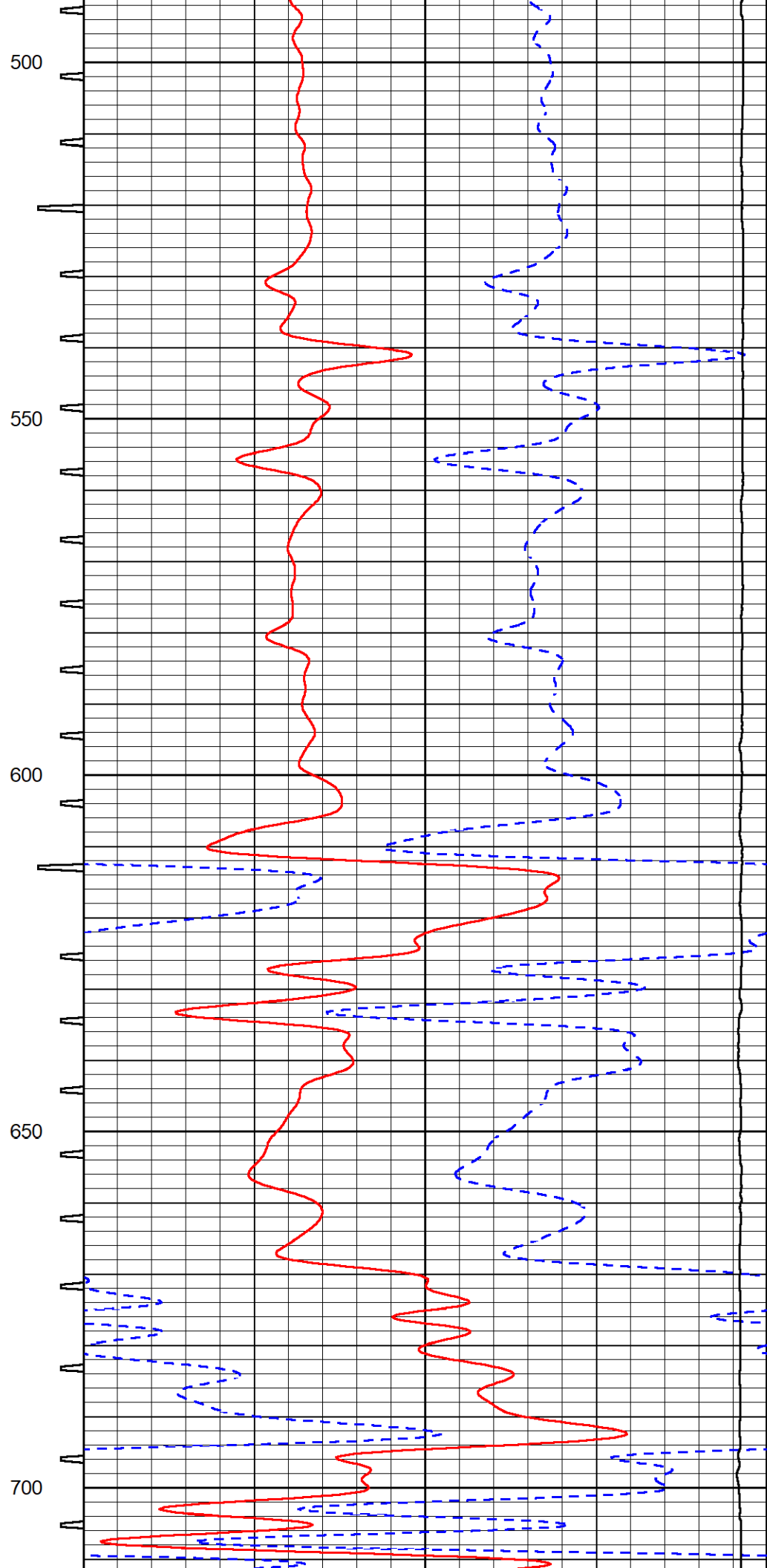
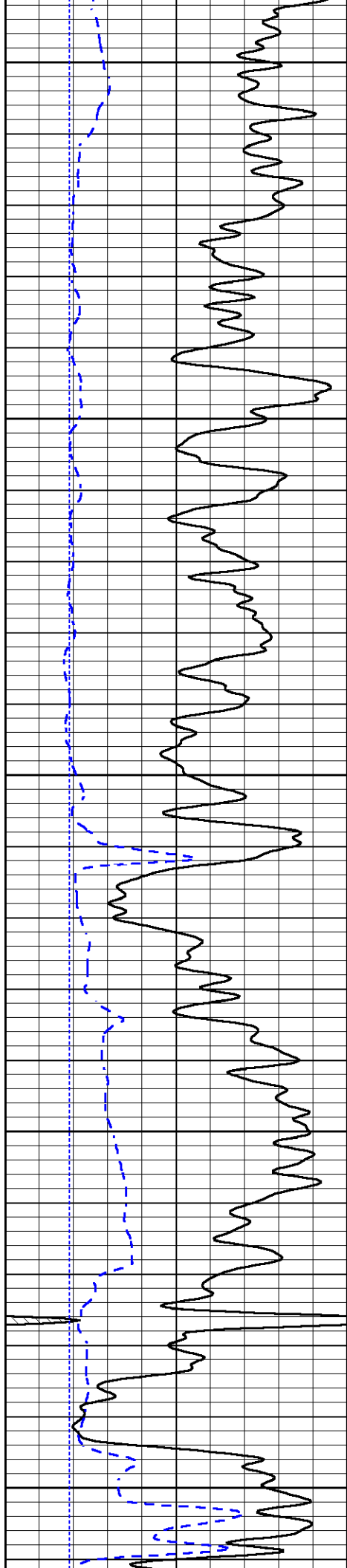
MAIN PASS

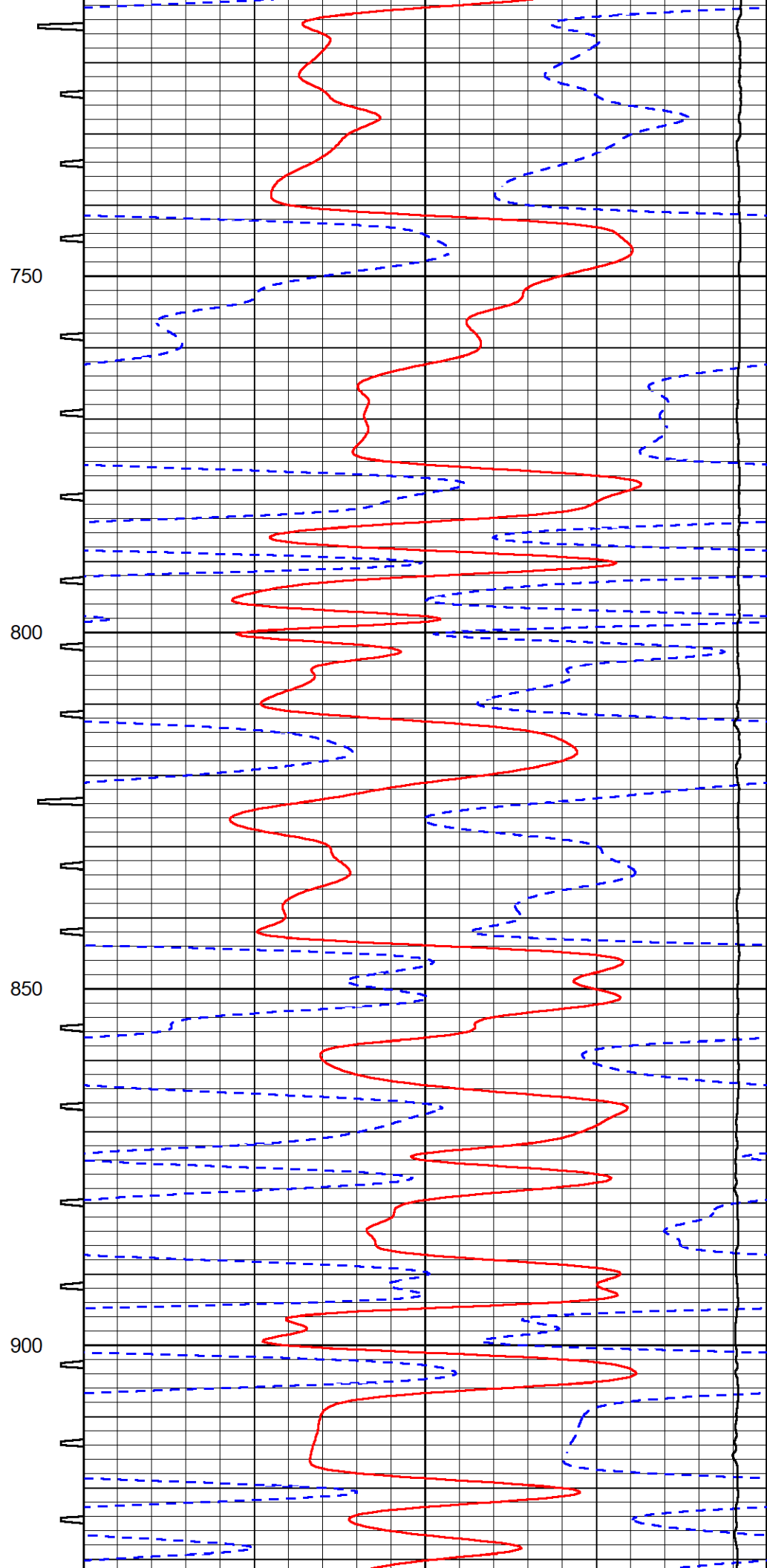
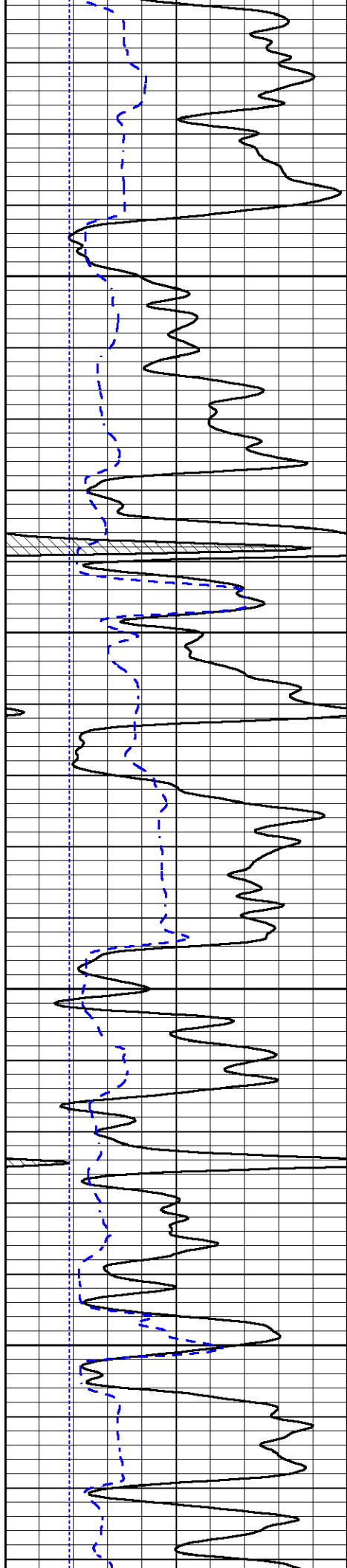
Database File norstar_blu1-22.db
Dataset Pathname stack/pass3.1
Presentation Format _sonic
Dataset Creation Sun Sep 12 04:07:32 2021
Charted by Depth in Feet scaled 1:240

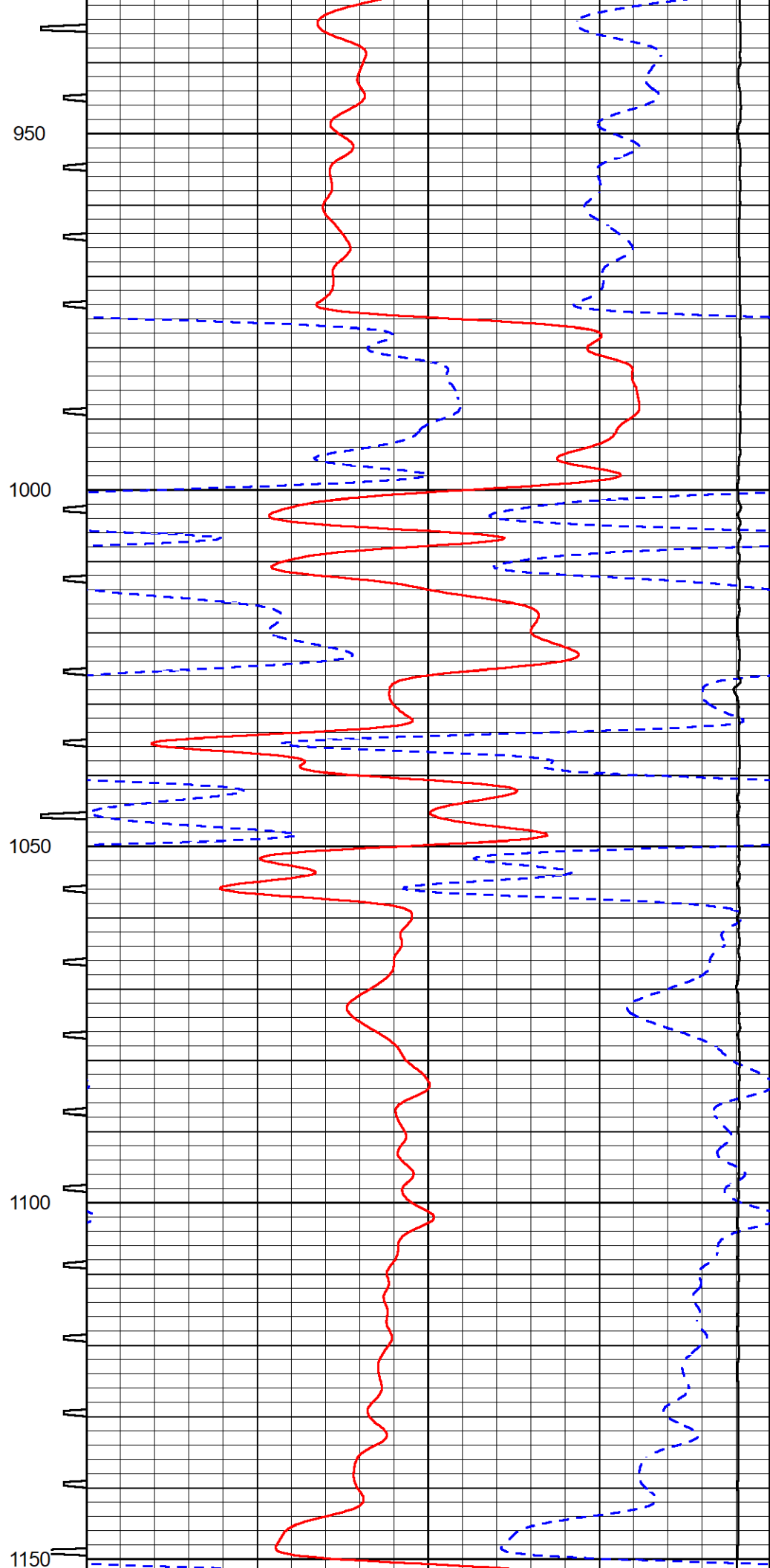
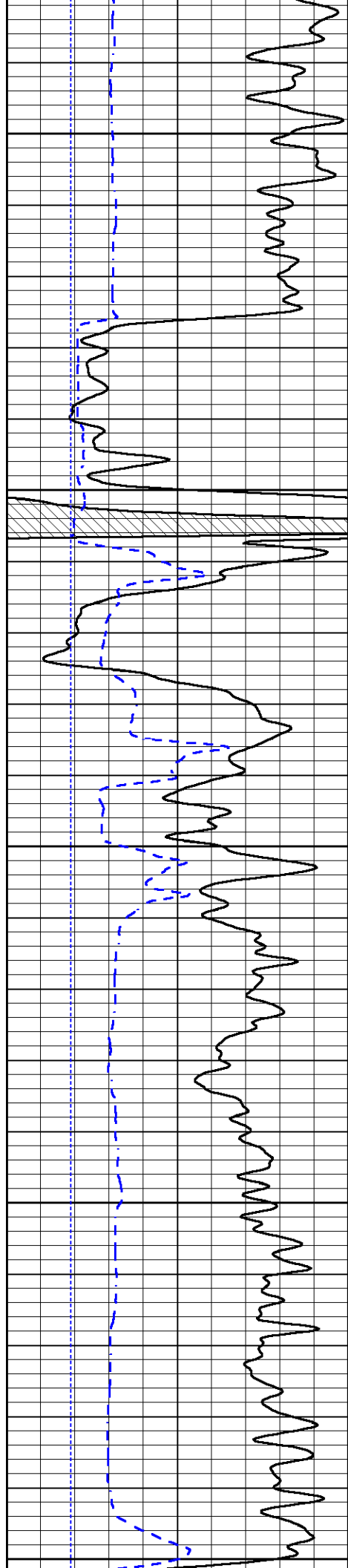
0	Gamma Ray (GAPI)	150	Sonic Int	140	Delta Time (usec/ft) (usec/ft)	40
150	GR (GAPI)	300	5 (msec) 0	30	Sonic Porosity (pu)	-10
6	DCAL (in)	16		15000	LTEN (lb) (lb)	0

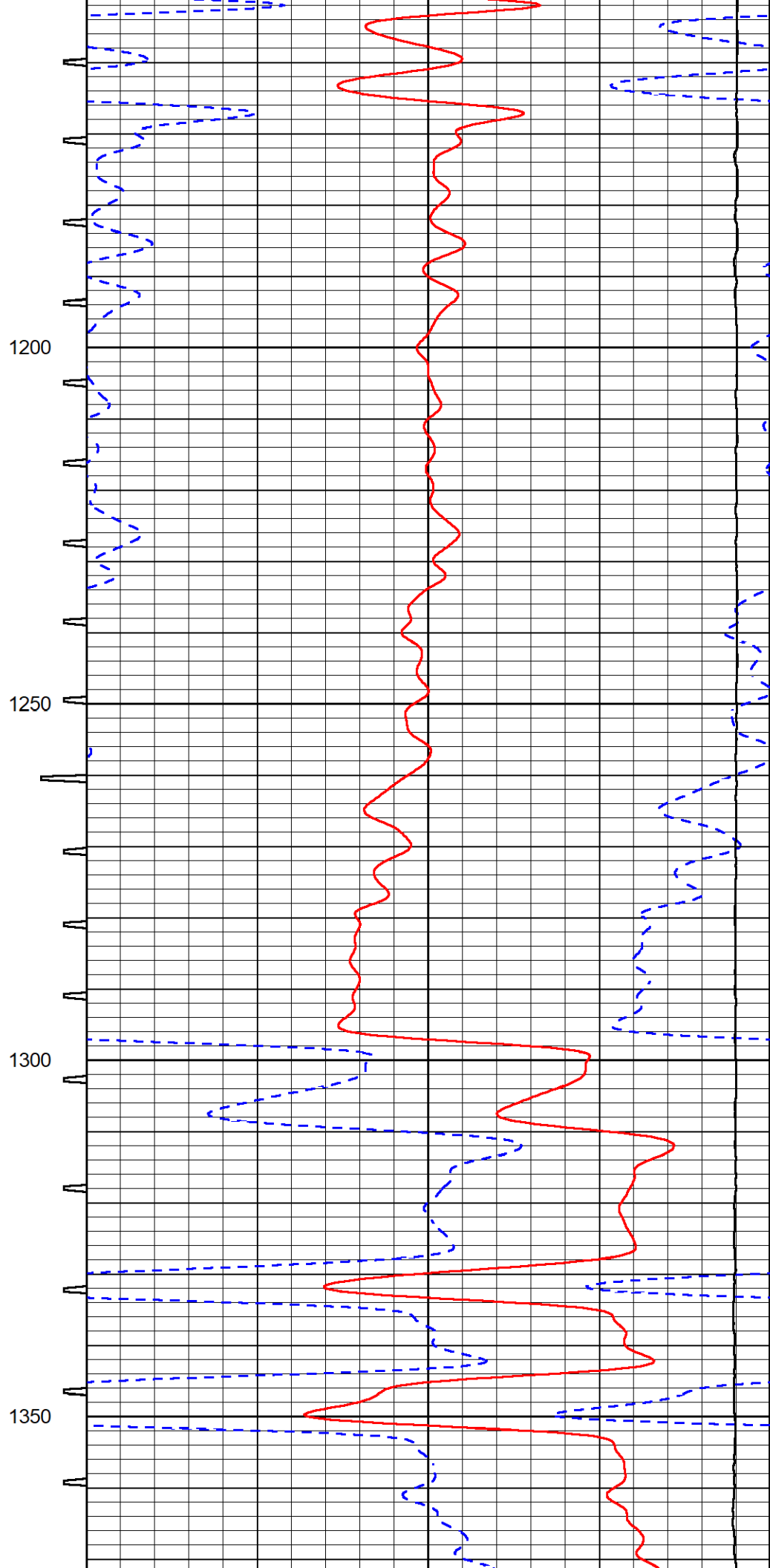
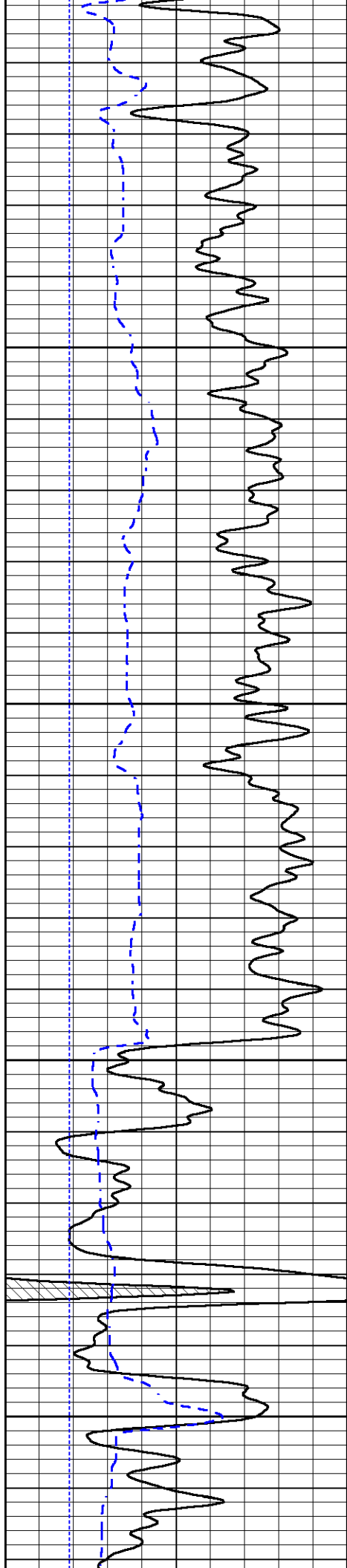


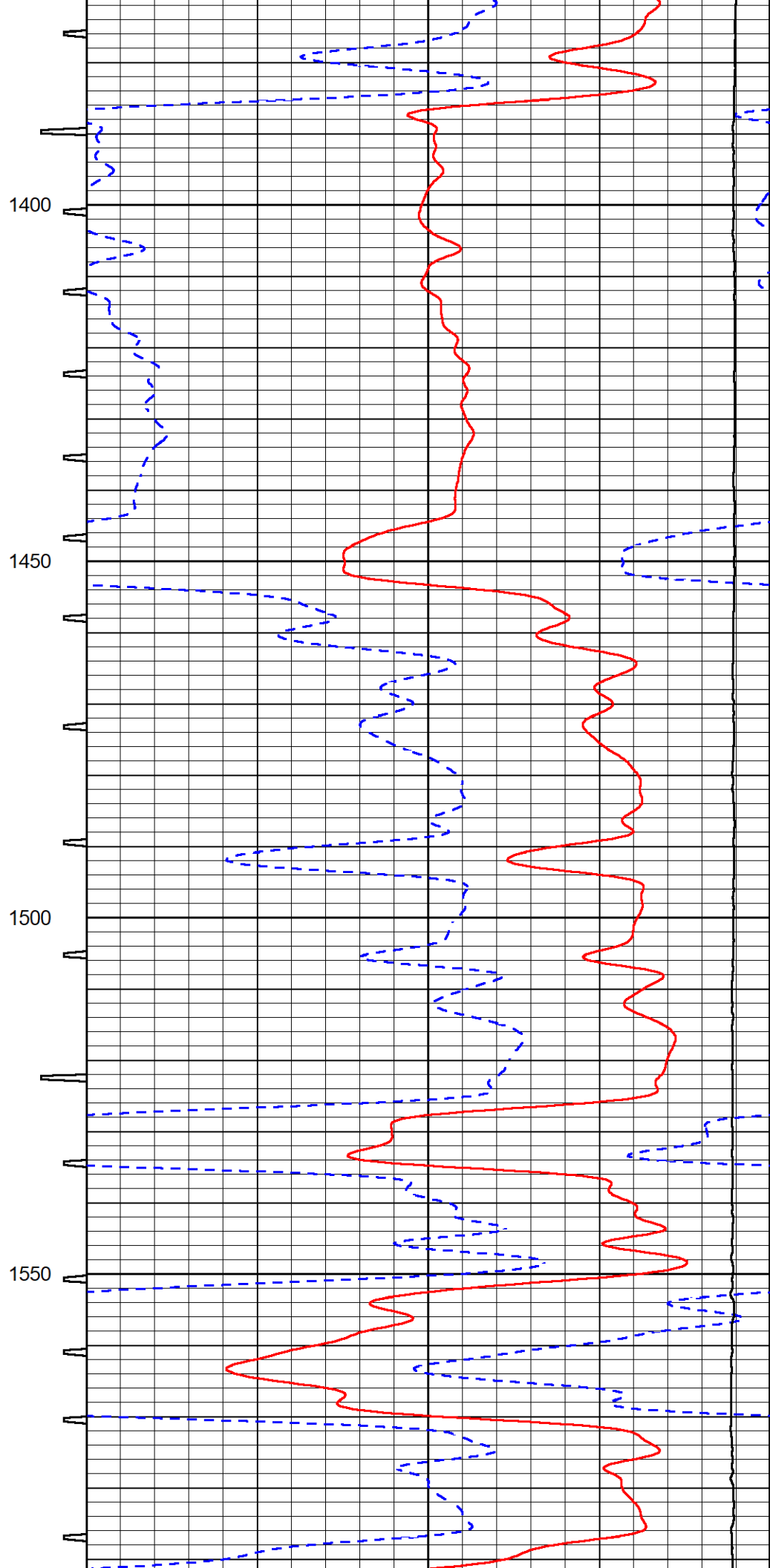
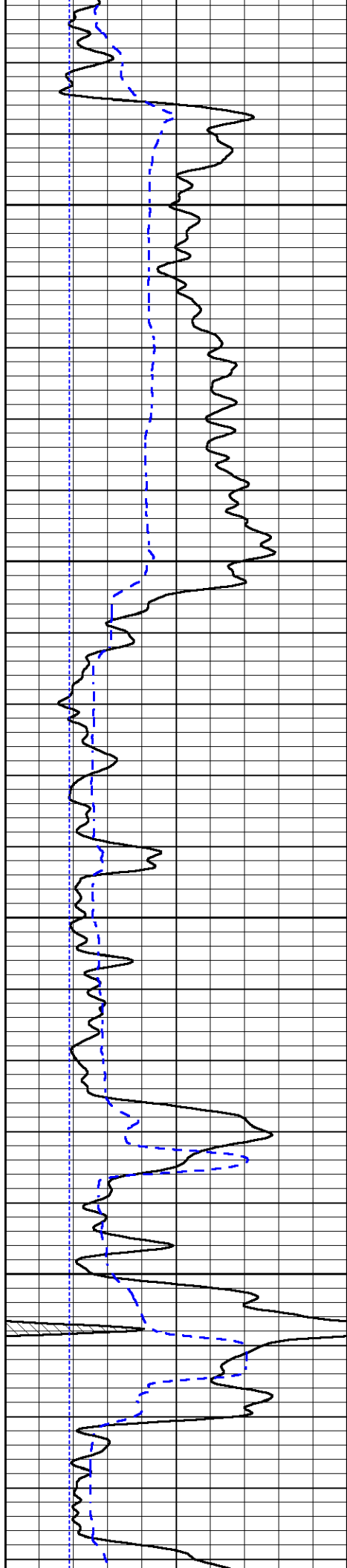


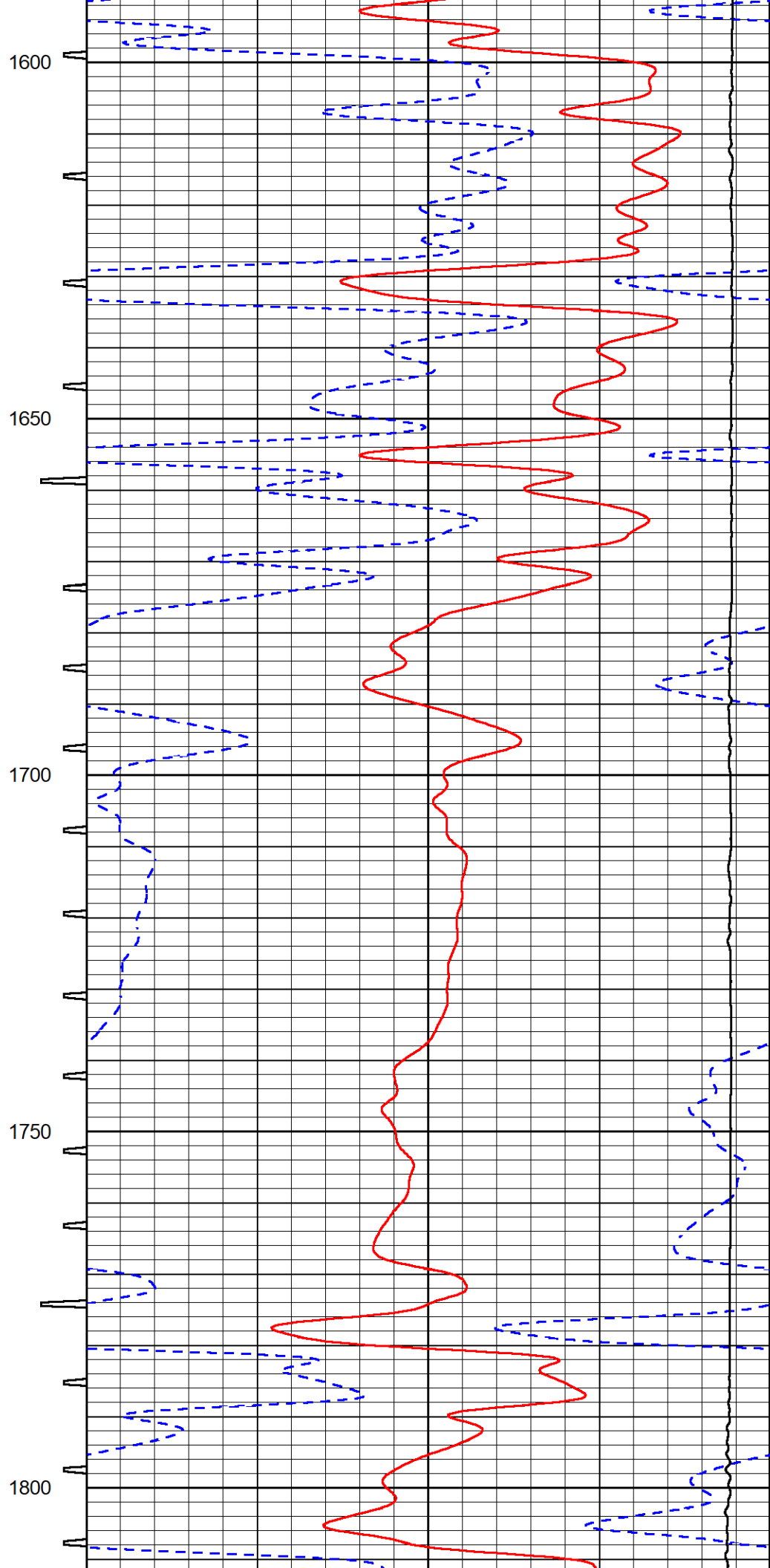
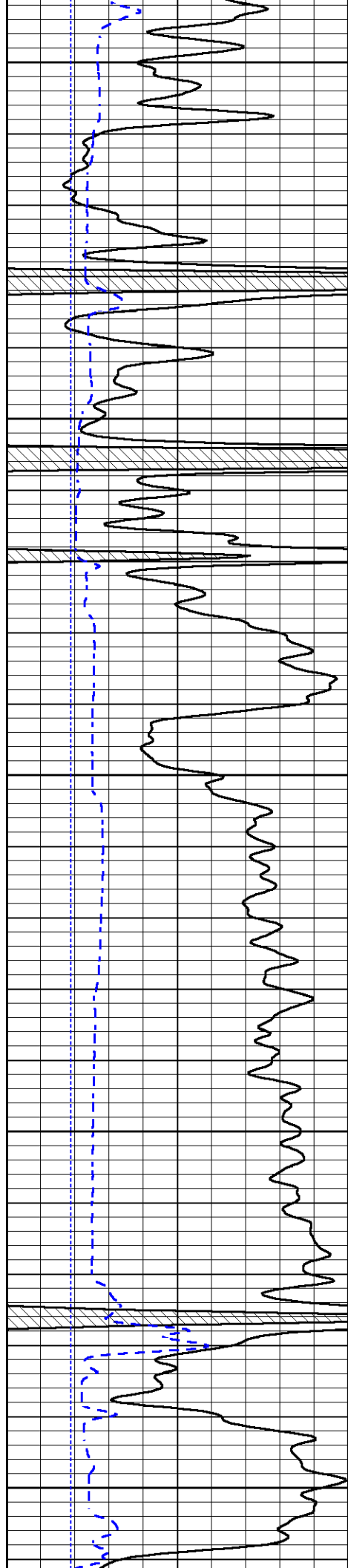


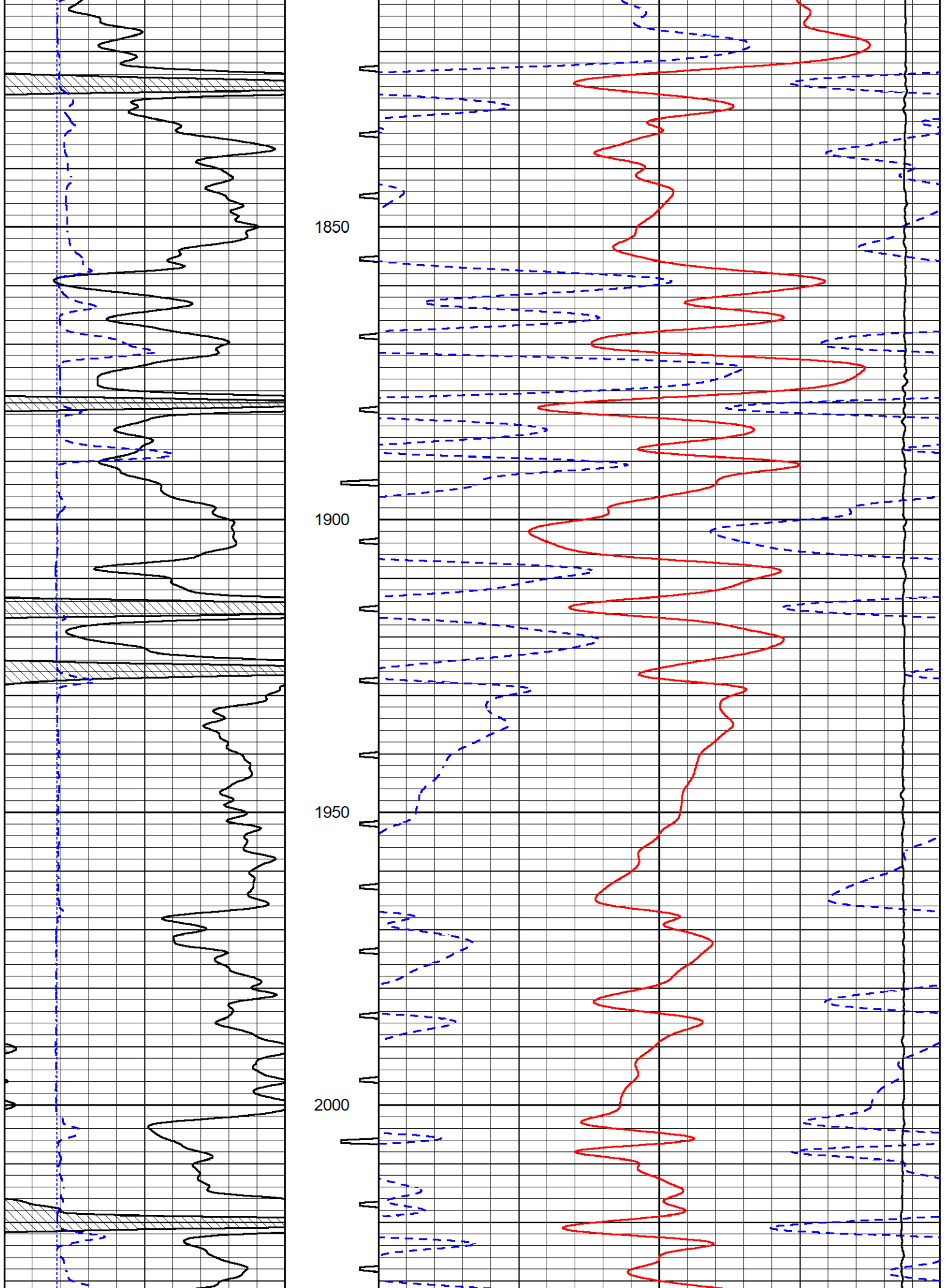


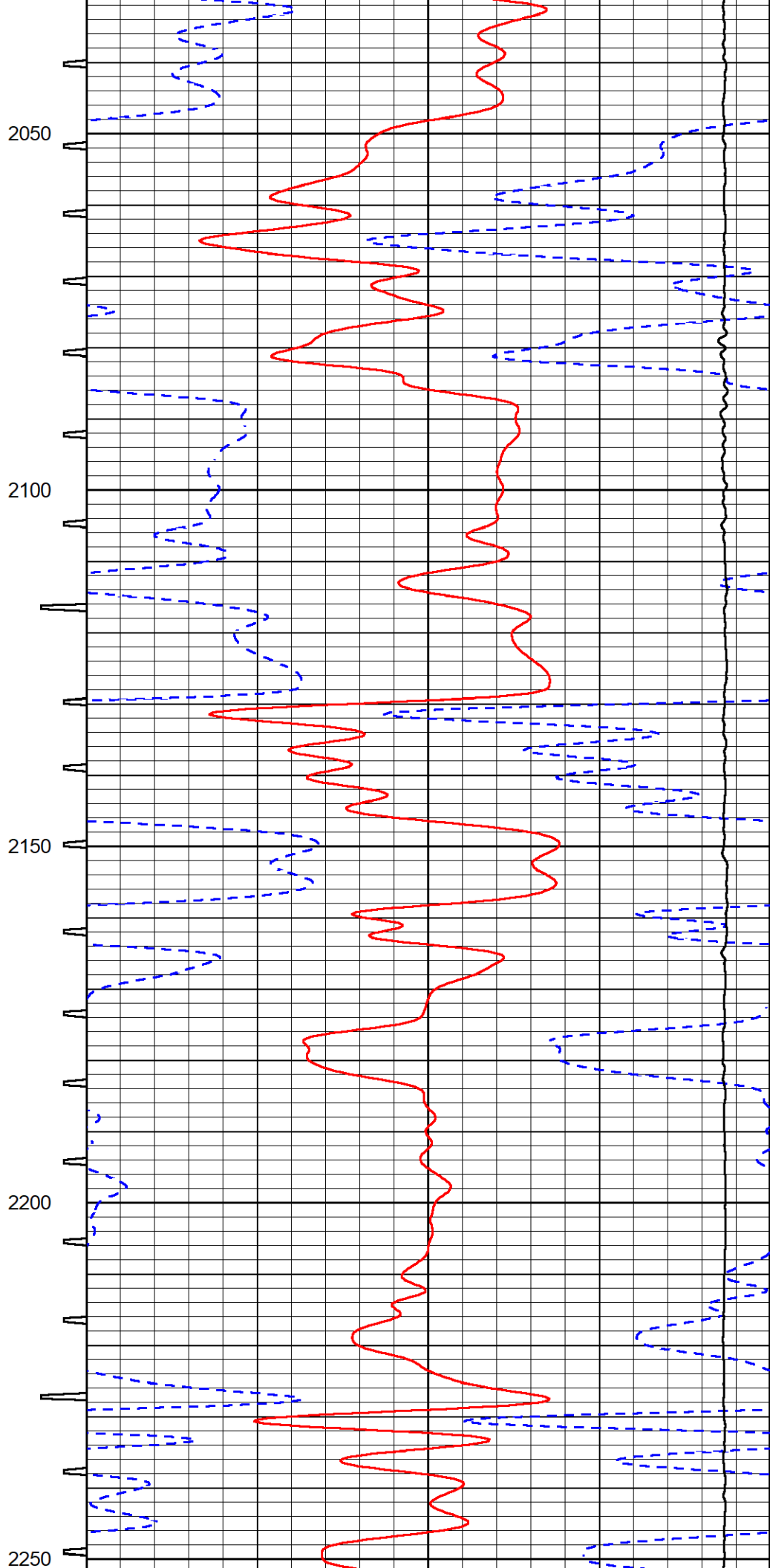
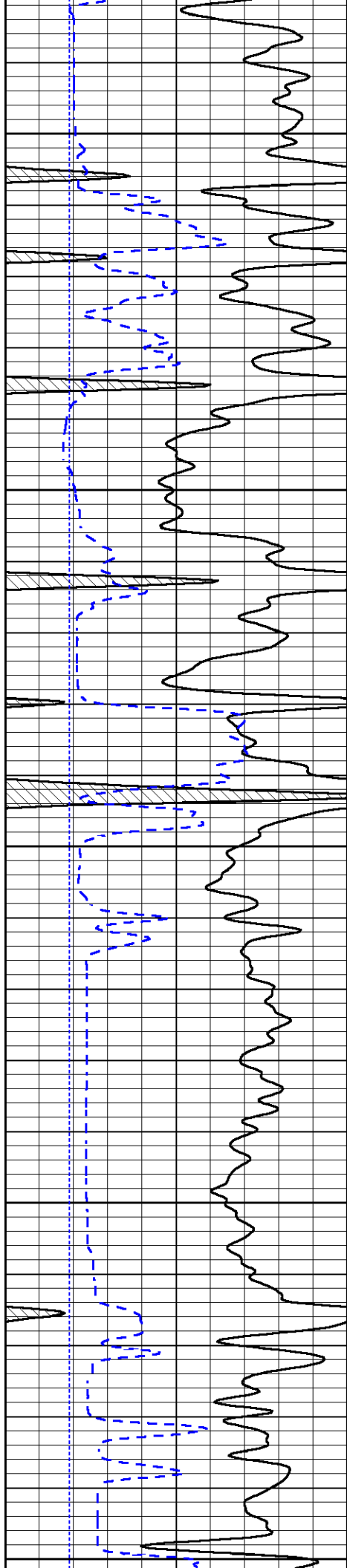


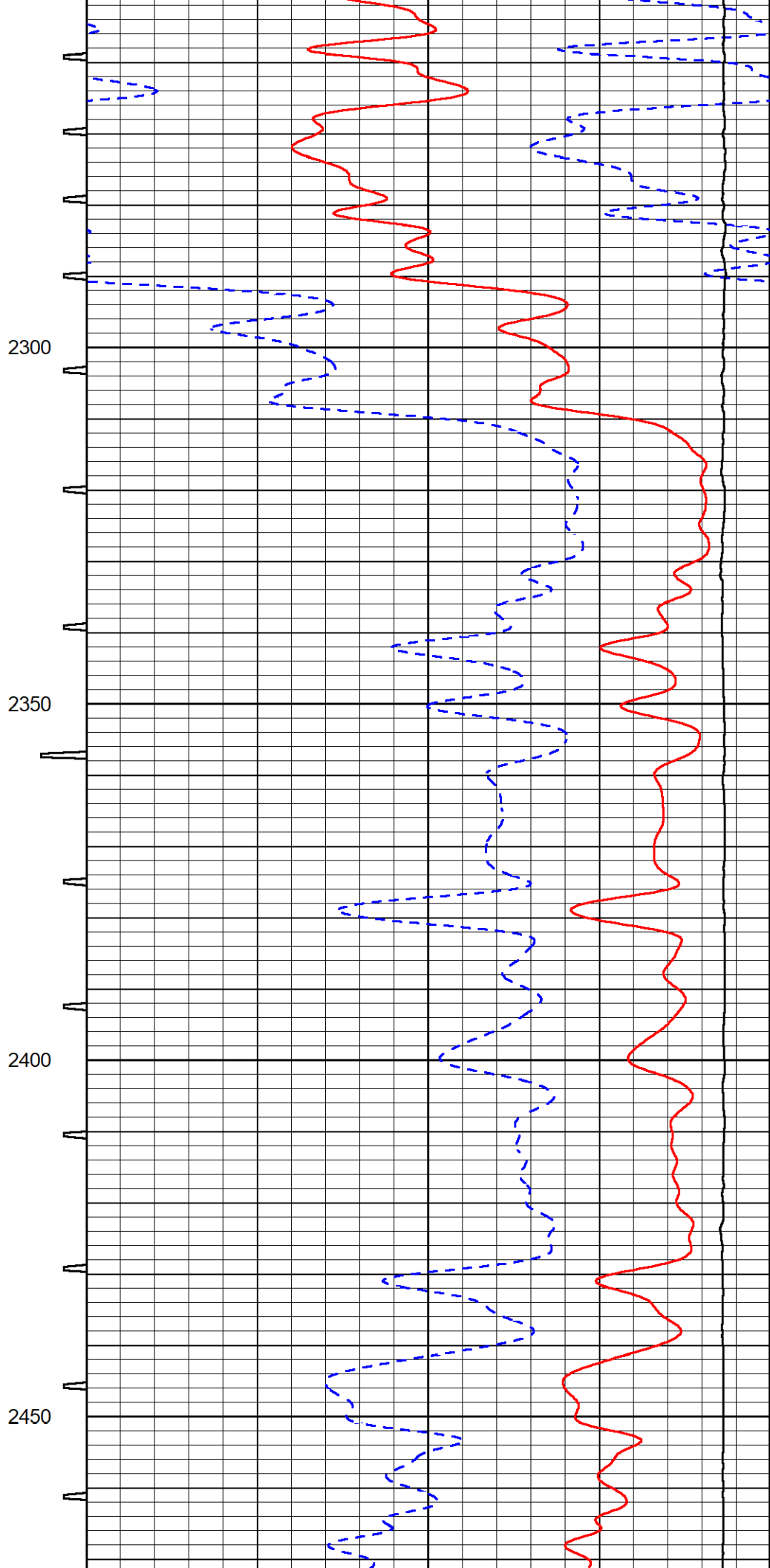
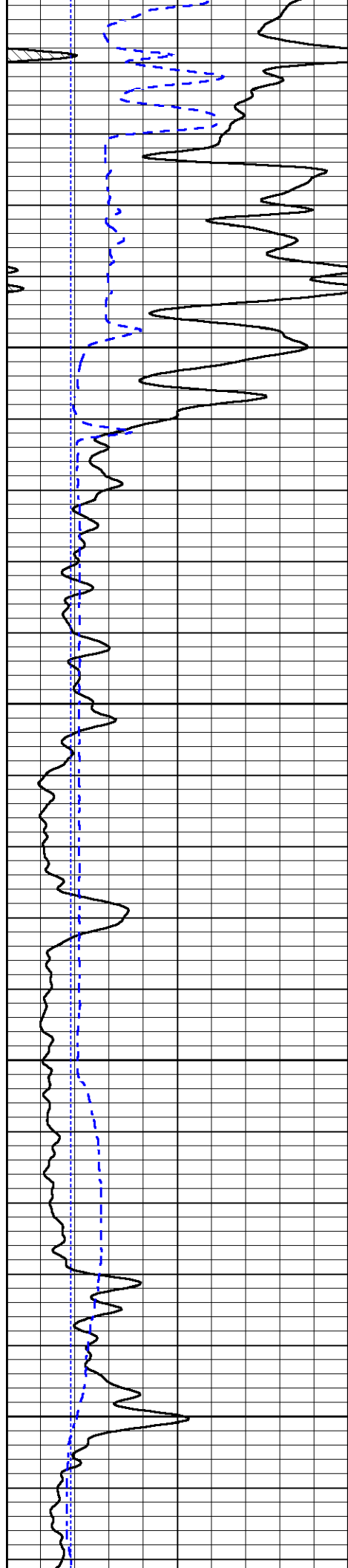


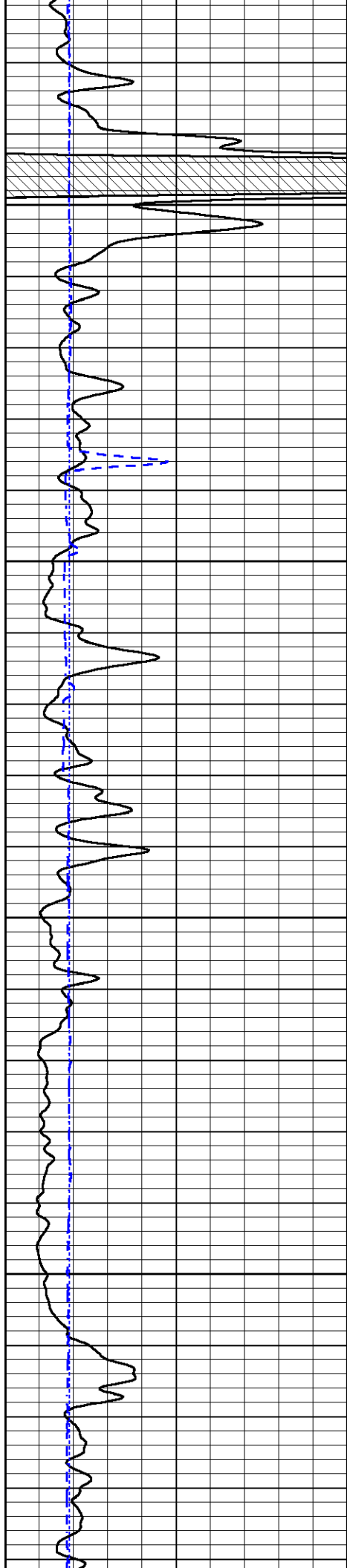










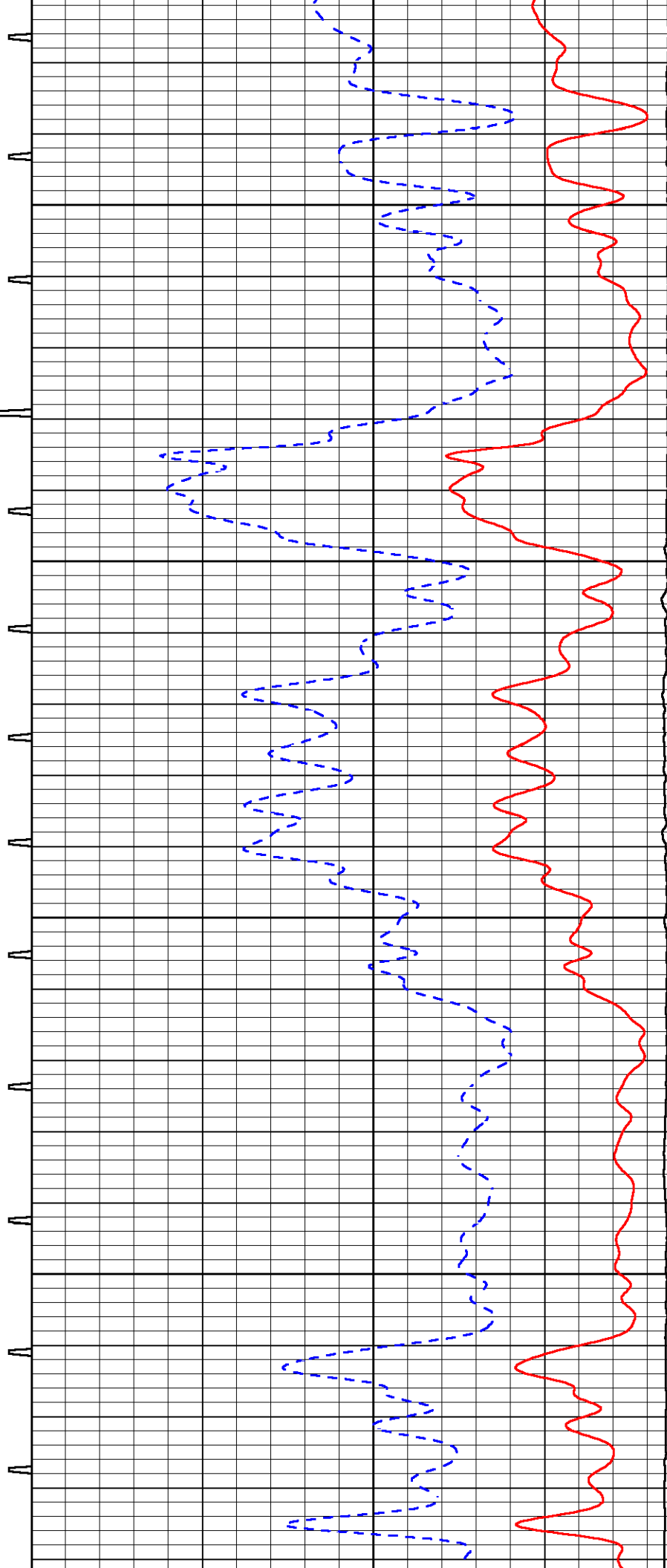


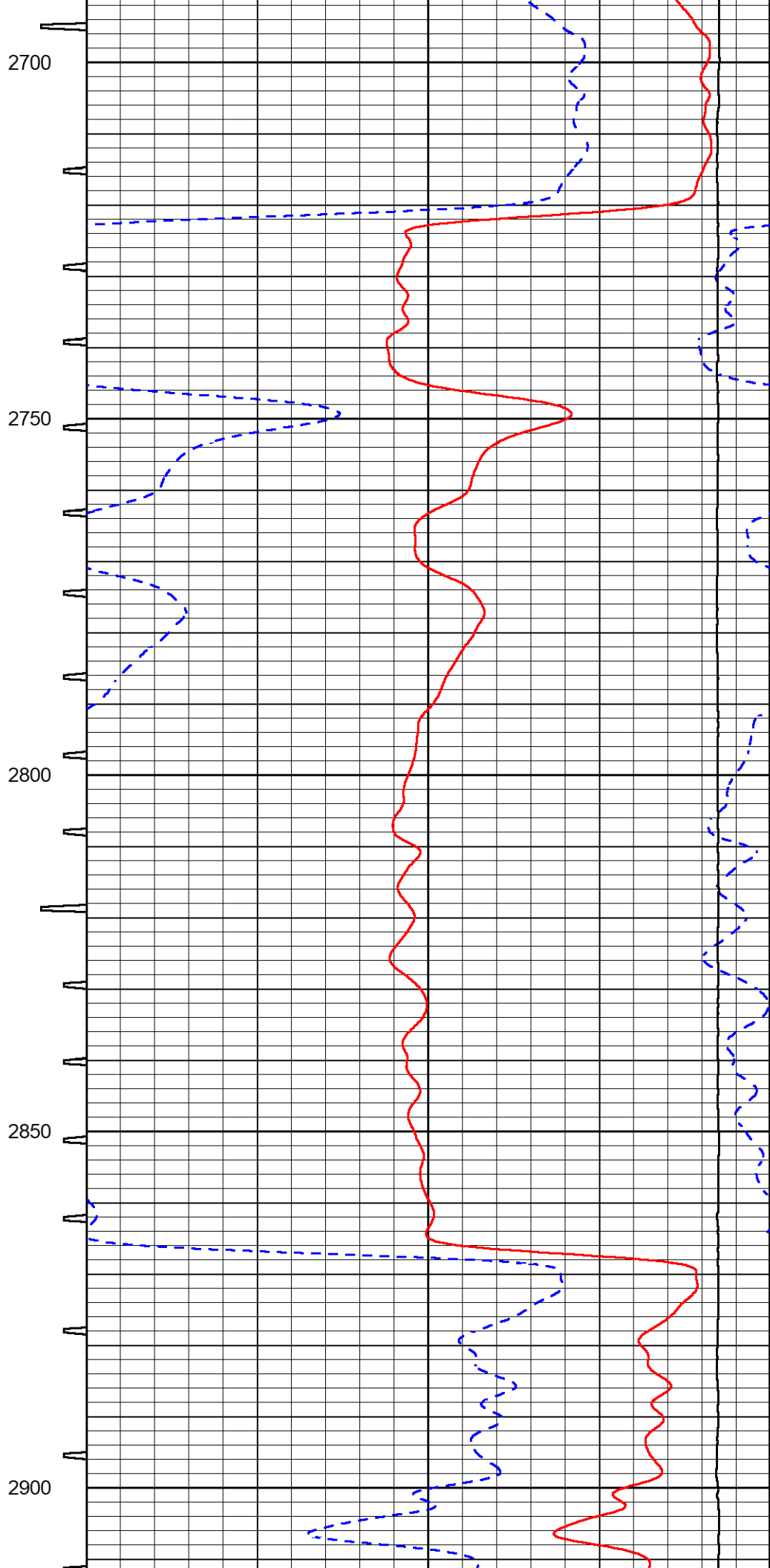
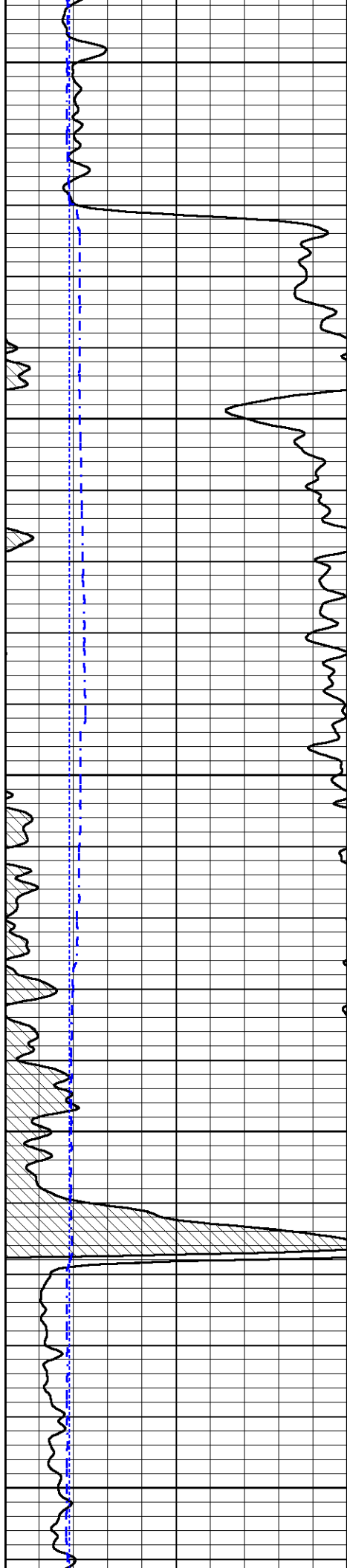
2500

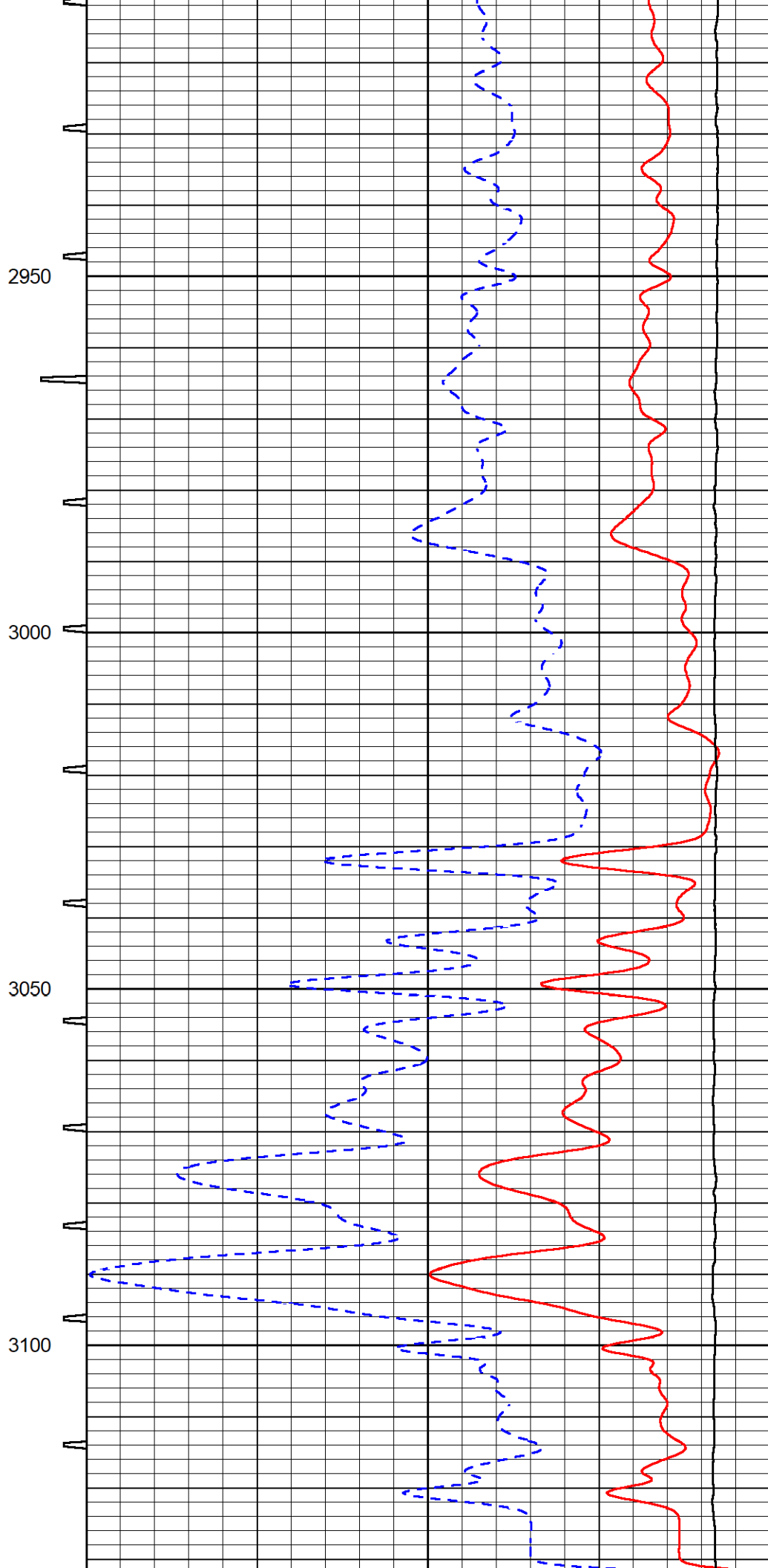
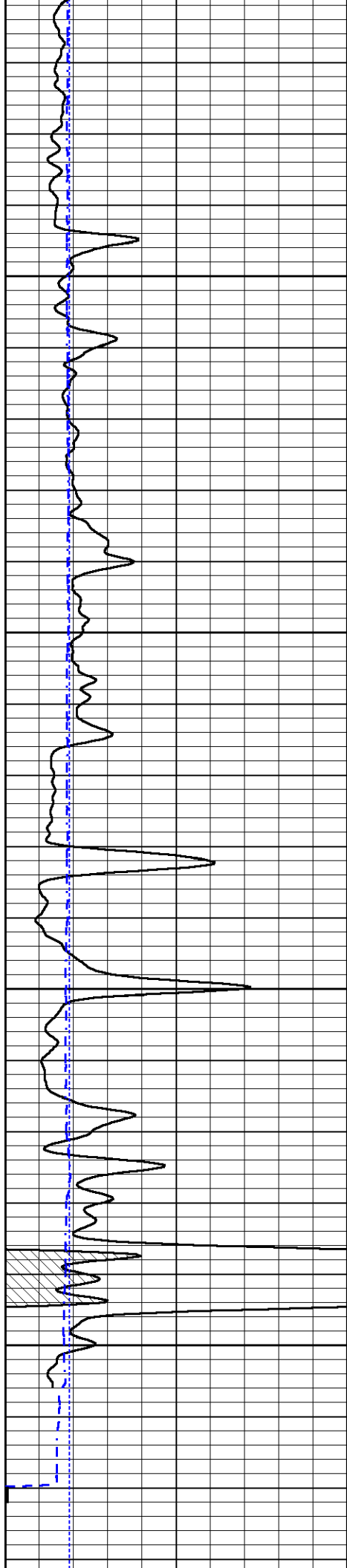
2550

2600

2650







0	Gamma Ray (GAPI)	150	Sonic Int	140	Delta Time (usec/ft) (usec/ft)	40
150	GR (GAPI)	300	5 (msec) 0	30	Sonic Porosity (pu)	-10
6	DCAL (in)	16		15000	LTEN (lb) (lb)	0

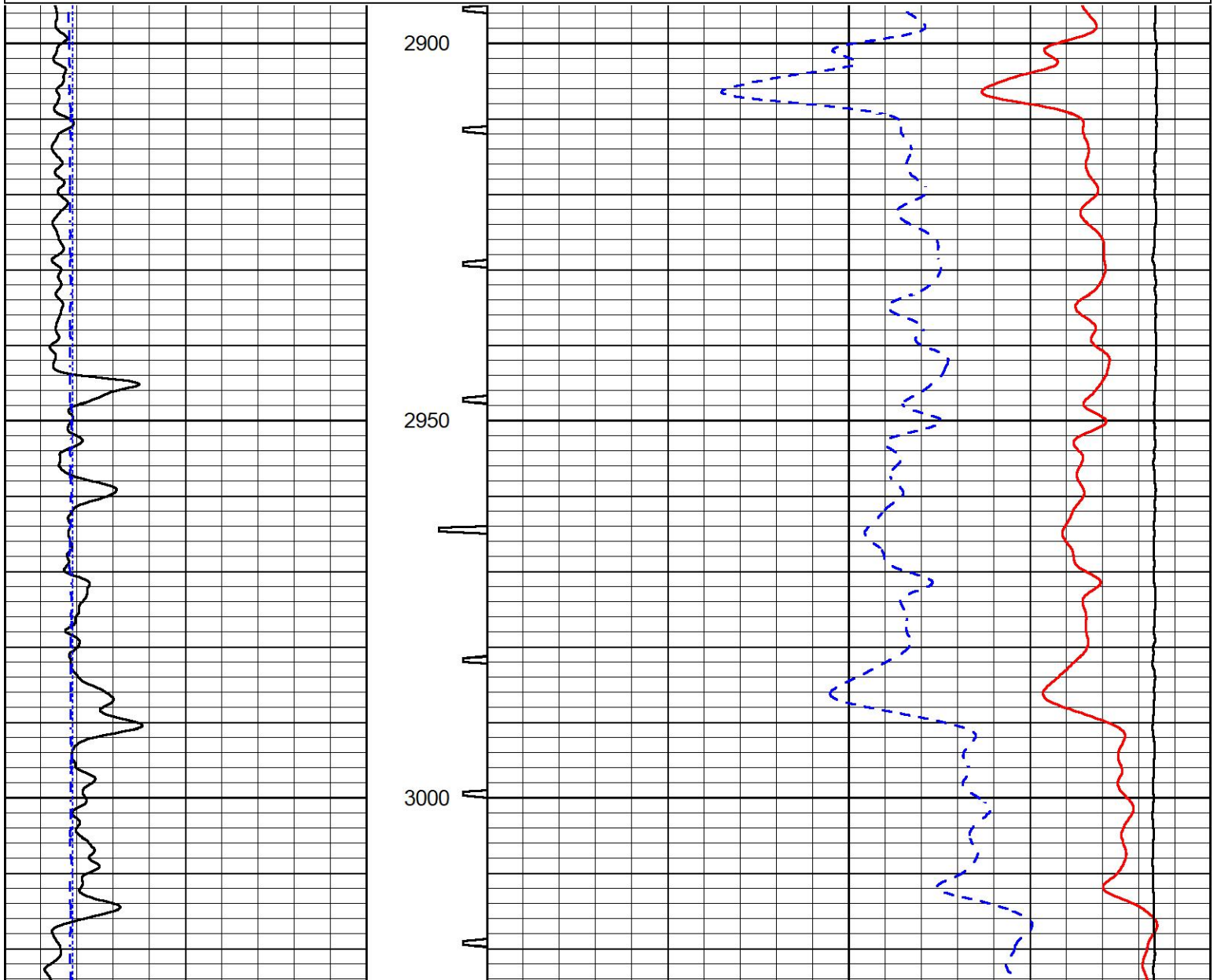


REPEAT SECTION

REPEAT PASS

Database File norstar_blu1-22.db
 Dataset Pathname stack/pass2.1
 Presentation Format _sonic
 Dataset Creation Sun Sep 12 03:45:46 2021
 Charted by Depth in Feet scaled 1:240

0	Gamma Ray (GAPI)	150	Sonic Int	140	Delta Time (usec/ft) (usec/ft)	40
150	GR (GAPI)	300	5 (msec) 0	30	Sonic Porosity (pu)	-10
6	DCAL (in)	16		15000	LTEN (lb) (lb)	0





Company Norstar Petroleum Inc.
Well BLU Unit #1-22
Field Unnamed
County Lyon
State Kansas