



MIDWEST WIRELINE

DUAL INDUCTION LOG

Company: Norstar Petroleum Inc.
 Well: BLU Unit #1-22
 Field: Unnamed
 County: Lyon
 State: Kansas

Company: Norstar Petroleum Inc.
 Well: BLU Unit #1-22
 Field: Unnamed
 County: Lyon
 State: Kansas

Location: 1322' FNL & 2373' FEL
 SEC 22 TWP 16S RGE 11E
 API #: 15-111-20555-00-00
 Permanent Datum: Ground Level Elevation 1341'
 Log Measured From: Kelly Bushing
 Drilling Measured From: Kelly Bushing
 Other Services: CNL/CDL MEL/BHCS
 Elevation: K.B. 1353', D.F., G.L. 1341'

Date	9/12/2021	
Run Number	One	
Depth Driller	3135'	
Depth Logger	3135'	
Bottom Logged Interval	3134'	
Top Log Interval	200'	
Casing Driller	8.625" @ 230'	
Casing Logger	243'	
Bit Size	7.875"	
Type Fluid in Hole	Chemical	
Salinity, ppm CL	550	
Density / Viscosity	9.1	47
pH / Fluid Loss	10.5	8.5
Source of Sample	FLOWLINE	
Rm @ Meas. Temp	.80 @ 80	
Rmt @ Meas. Temp	.60 @ 80	
Rmc @ Meas. Temp	1.08 @ 80	
Source of Rmf / Rmc	CHARTS	
Rm @ BHT	.60 @ 107	
Operating Rig Time	4 Hours	
Max Rec. Temp. F	107	
Equipment Number	P-24	
Location	HAYS	
Recorded By	D. Schmidt	C. McLaughlin
Witnessed By	Brad Rine	

<<< Fold Here >>>

All interpretations are opinions based on inferences from electrical or other measurements and Midwest Wireline LLC cannot and does not guarantee the accuracy or correctness of any interpretation, and Midwest Wireline LLC will not be liable or responsible for any loss, costs, damages, or expenses incurred or sustained by anyone resulting from any interpretation made by any of our officers, agents or employees.

Comments

N/A DENOTES NOT AVAILABLE OR NON-APPLICABLE.

Allen,
 1/2 South on L Rd,
 West into

Log Measured From: Kelly Bushing 12 Ft. Above Permanent Datum

THANK YOU FOR USING MIDWEST WIRELINE LLC
 785-625-3858

Your Midwest Wireline Crew		This Log Record Was Witnessed By	
Engineer: D. Schmidt	Operator:	Primary Witness: Brad Rine	Secondary Witness:
Operator:	Operator:	Secondary Witness:	Secondary Witness:
Operator:		Secondary Witness:	

Operator	Offset (ft)	Depth	Description	Length (ft)	O.D. (in)	Weight (lb)
----------	-------------	-------	-------------	-------------	-----------	-------------

Sensor	Offset (ft)	Schematic	Description	Length (ft)	O.D. (in)	Weight (lb)
GR	33.00		GR-M&W (233-M&W)	3.00	3.50	50.00
CNLSC CNSSC	29.90 29.15		CNT-M&W (207-MW)	5.50	3.50	100.00
LSD DCAL SSD	20.85 20.83 20.35		CDL-M&W (126-4040)	8.50	4.00	250.00
RLL3F RLL3	15.80 15.80		DIL-PSI HIGH TEMP (952-828)	18.50	3.50	220.00
CILD	8.00		CILM	4.70		
SP	0.20					

Dataset: norstar_blu1-22.db: field/well/stack/pass3.4
 Total length: 35.50 ft
 Total weight: 620.00 lb
 O.D.: 4.00 in

Log Variables

DatabaseC:\ProgramData\Warrior\Data\norstar_blu1-22.db
 Dataset field/well/stack/pass3.4/_vars_

Top - Bottom

A	BOREID in	BOTTEMP degF	CASEOD in	CASETHCK in	FLUIDDEN g/cc	M	MATRXDEN g/cc
1	7.875	107	5.5	0	1	2	2.71
NPORSEL	PERFS	SNDERR mmho/m	SNDERRM mmho/m	SPSHIFT mV	SRFTEMP degF	SZCOR	TDEPTH ft
Limestone	0	0	0	115	80	Off	3135

Variable Description

A : Cement Factor (a)
 BOREID : Borehole I.D.
 BOTTEMP : Bottom Hole Temperature
 CASEOD : Casing O.D.
 CASETHCK : Casing Thickness
 FLUIDDEN : Fluid Density
 M : Cement Exp (m)
 MATRXDEN : Matrix Density

NPORSEL : Neutron Porosity Curve Select
 PERFS : Perforation Flag
 SNDERR : Deep Sonde Error Correction
 SNDERRM : Medium Sonde Error Correction
 SPSHIFT : S.P. Baseline Offset
 SRFTEMP : Surface Temperature
 SZCOR : CN Size Cor. ?
 TDEPTH : Total Depth

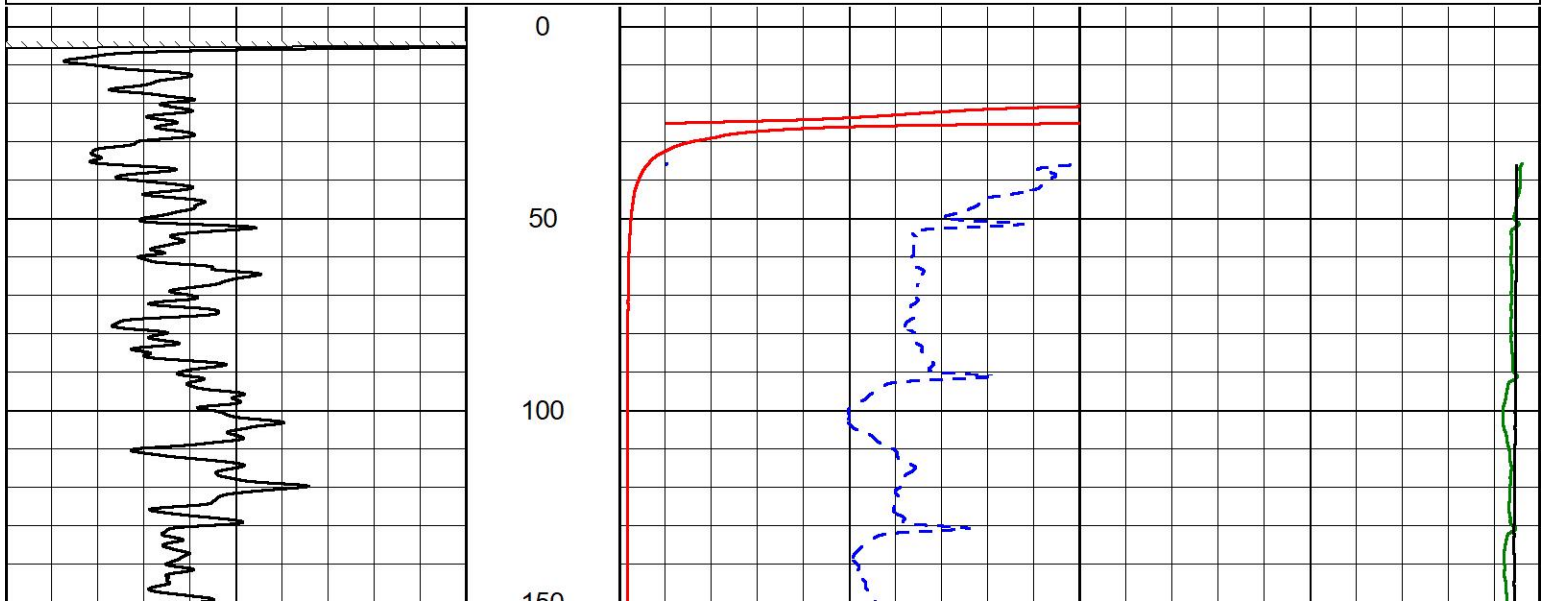


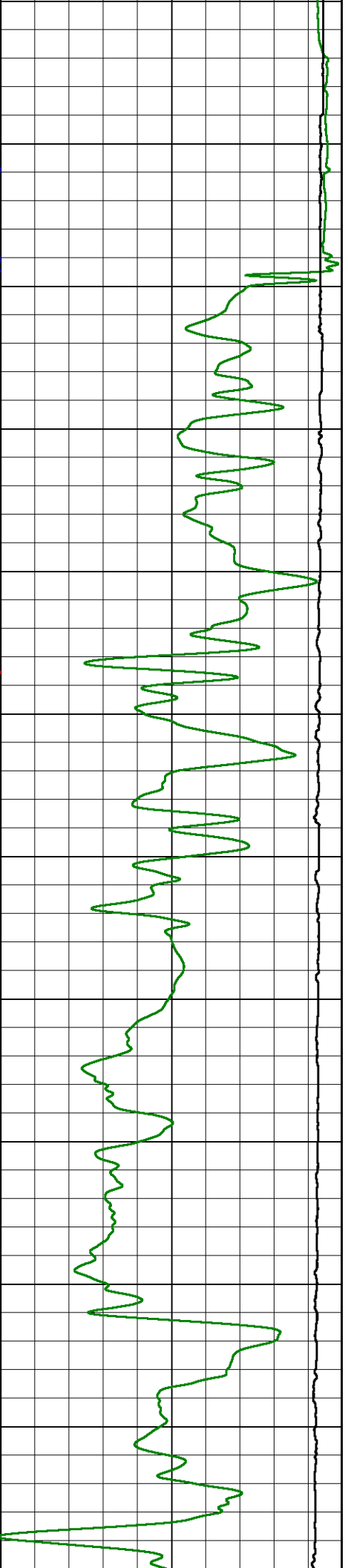
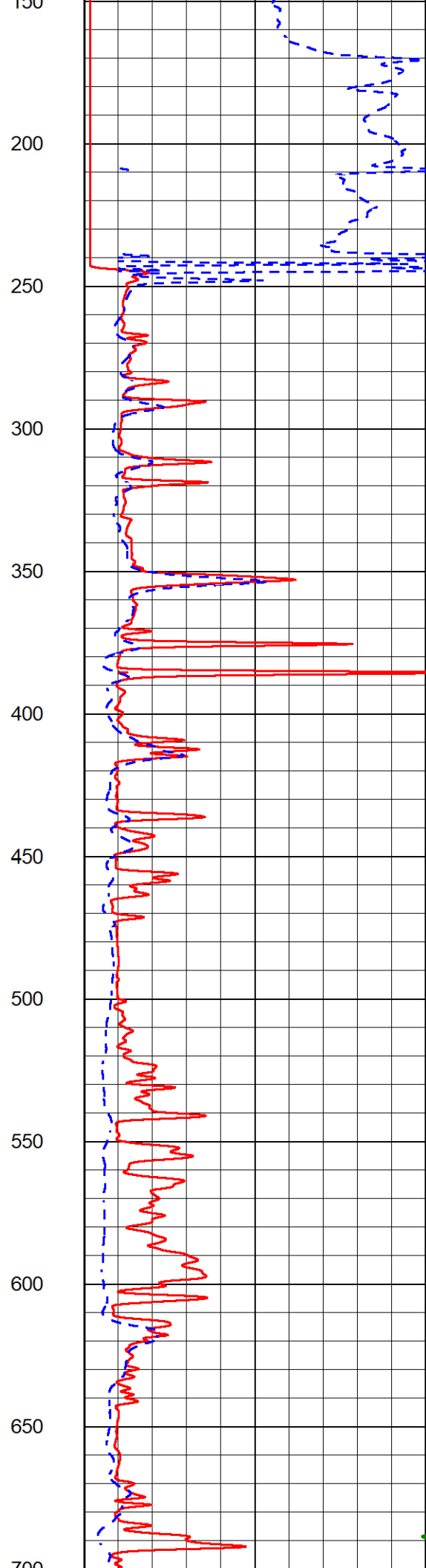
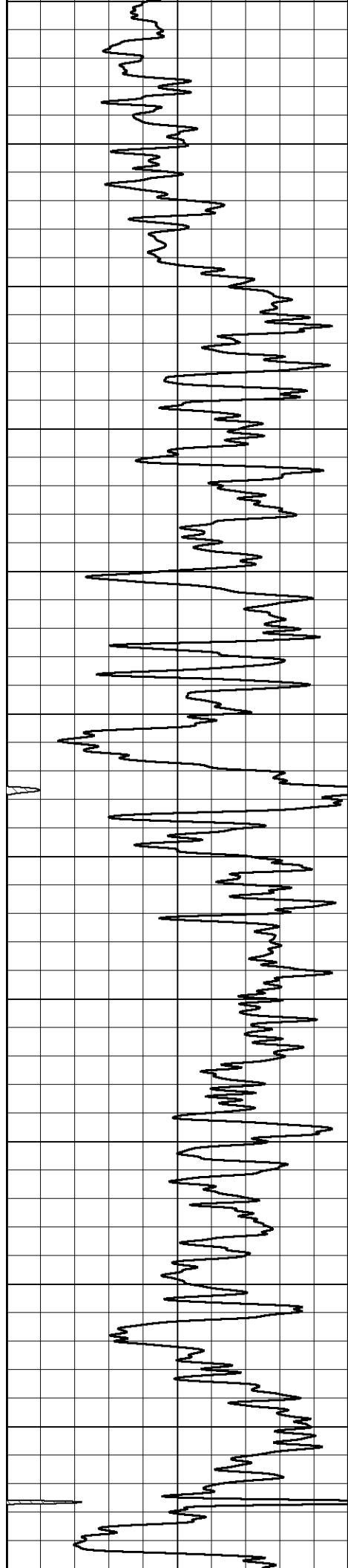
2" SCALE RESISTIVITY

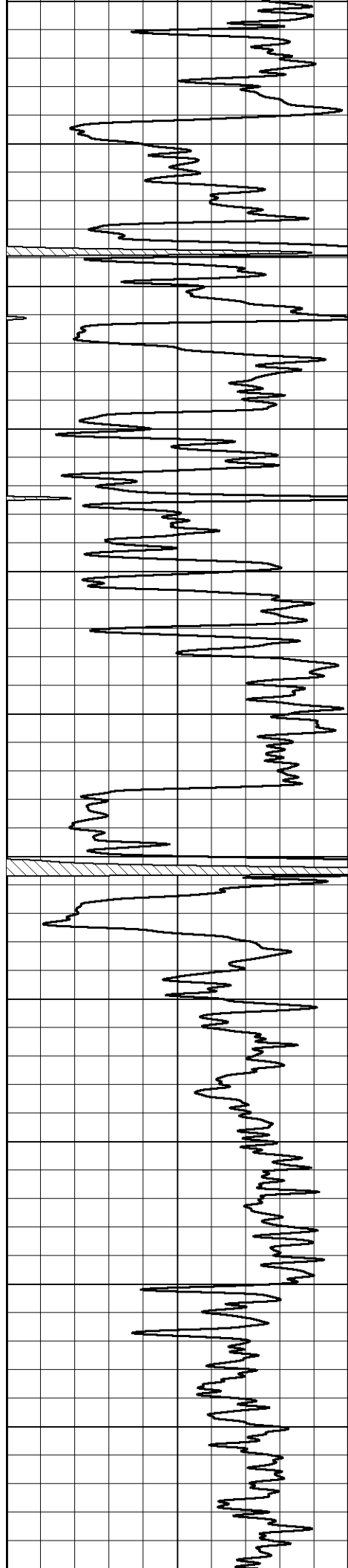
MAIN PASS

Database File norstar_blu1-22.db
 Dataset Pathname stack/pass5.1
 Presentation Format _dil2in
 Dataset Creation Sun Sep 12 04:13:29 2021
 Charted by Depth in Feet scaled 1:600

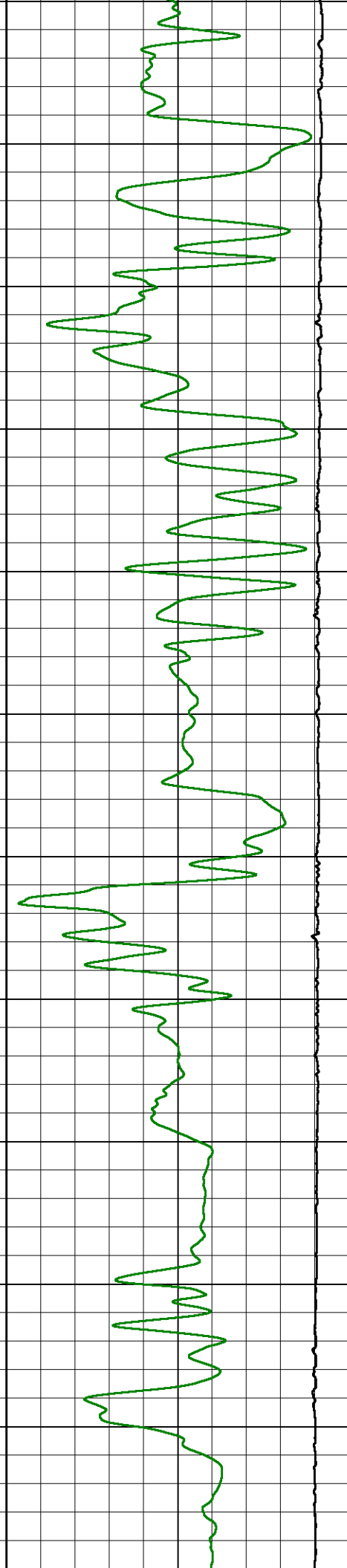
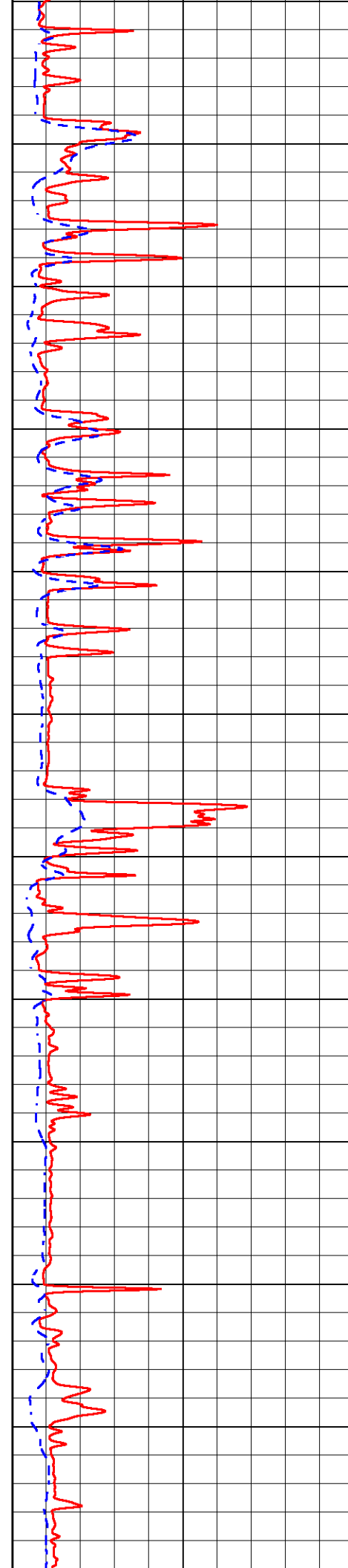
GAMMA RAY (GAPI)	1000	CONDUCTIVITY (mmho/m)	0
	15000	Line Tension (lb)	0
	0	RLL3 (Ohm-m)	50
	0	RILD (Ohm-m)	50
	50	RLL3 (Ohm-m)	200
	50	Deep Resistivity (Ohm-m)	200

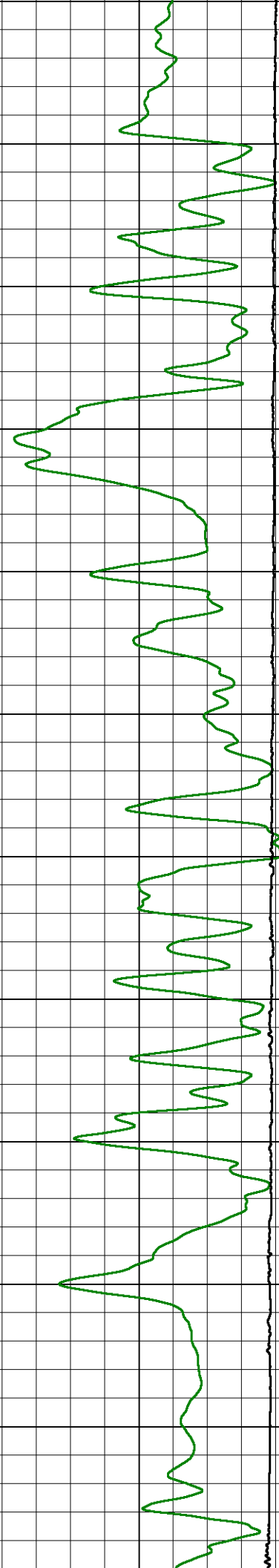
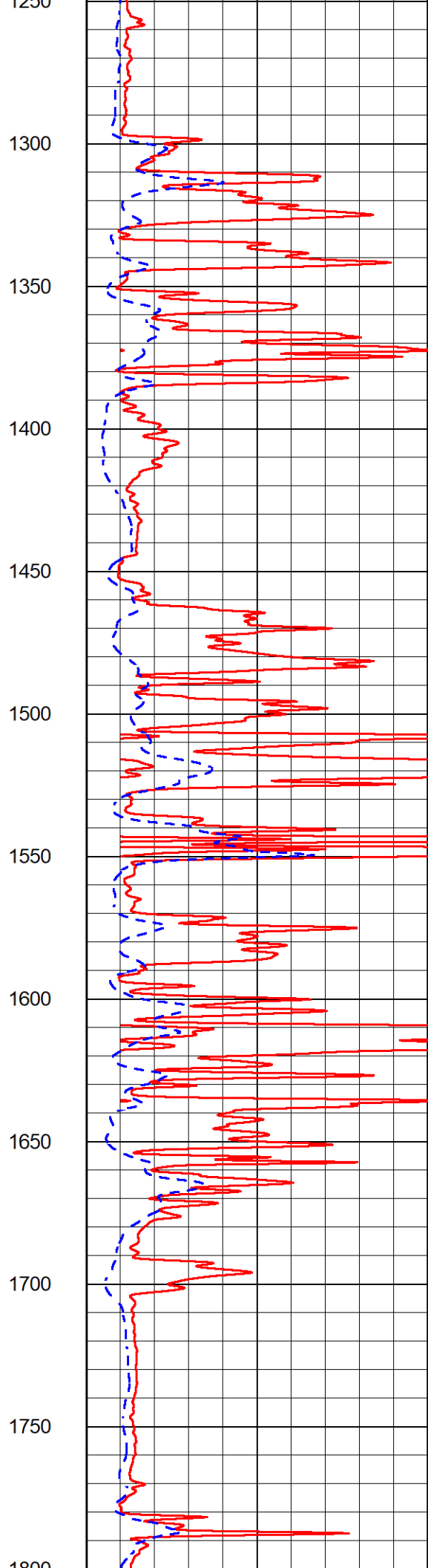
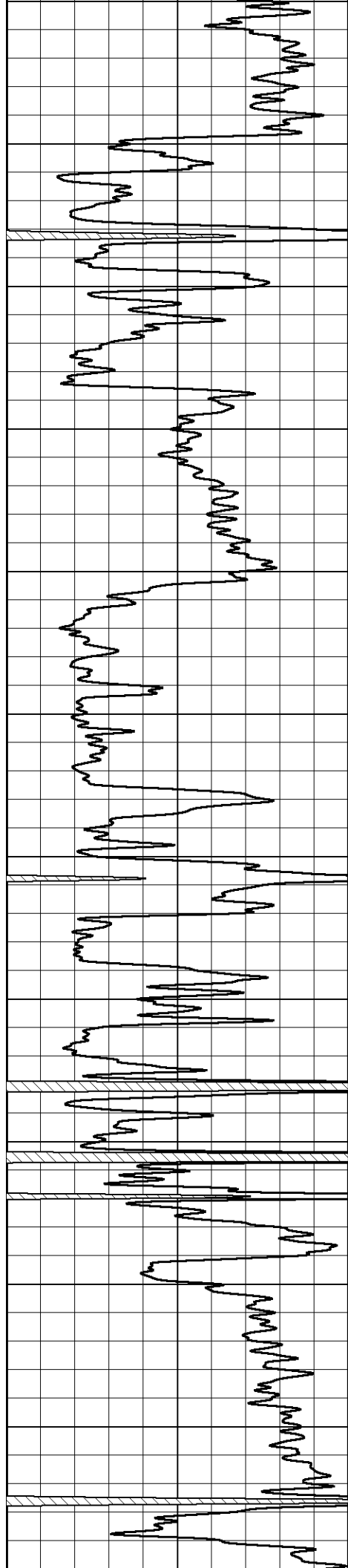


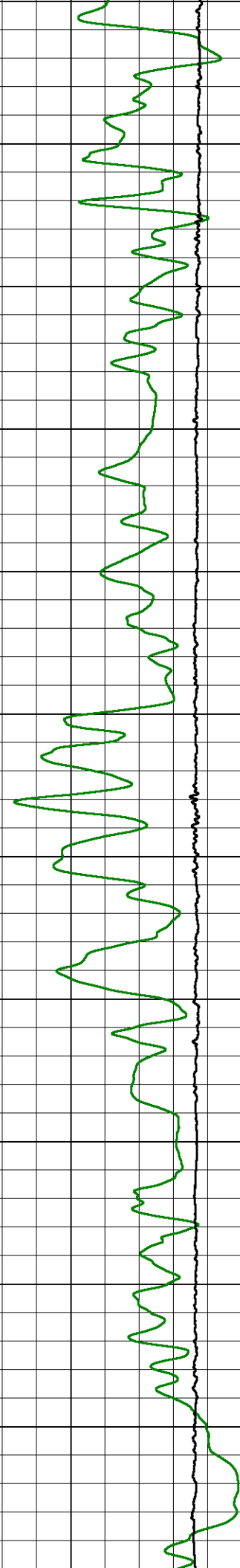
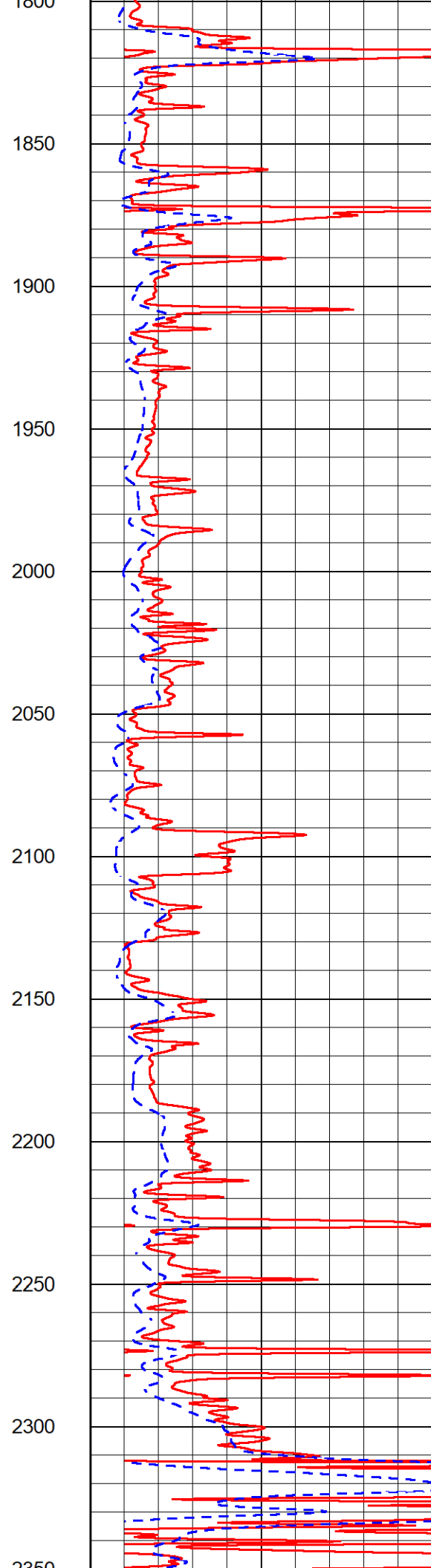
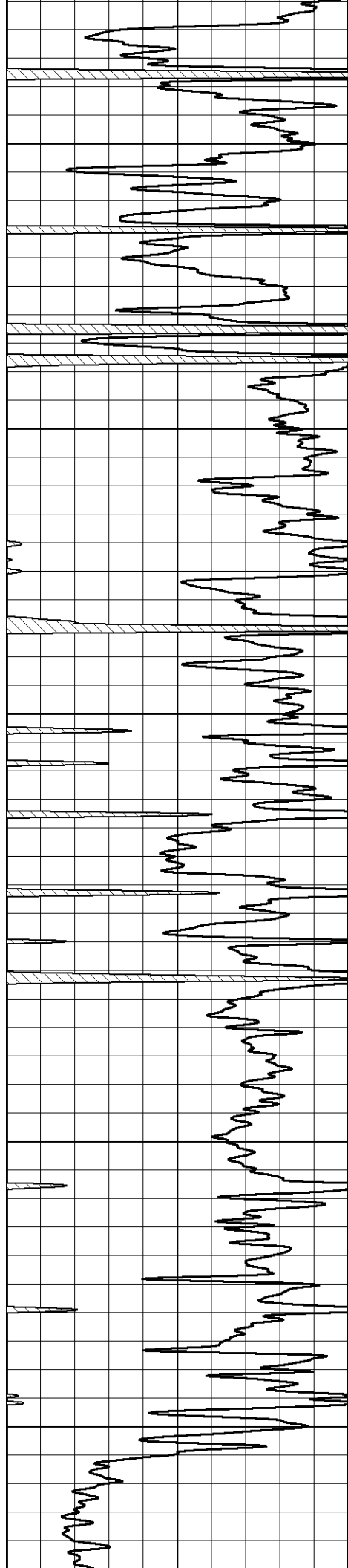


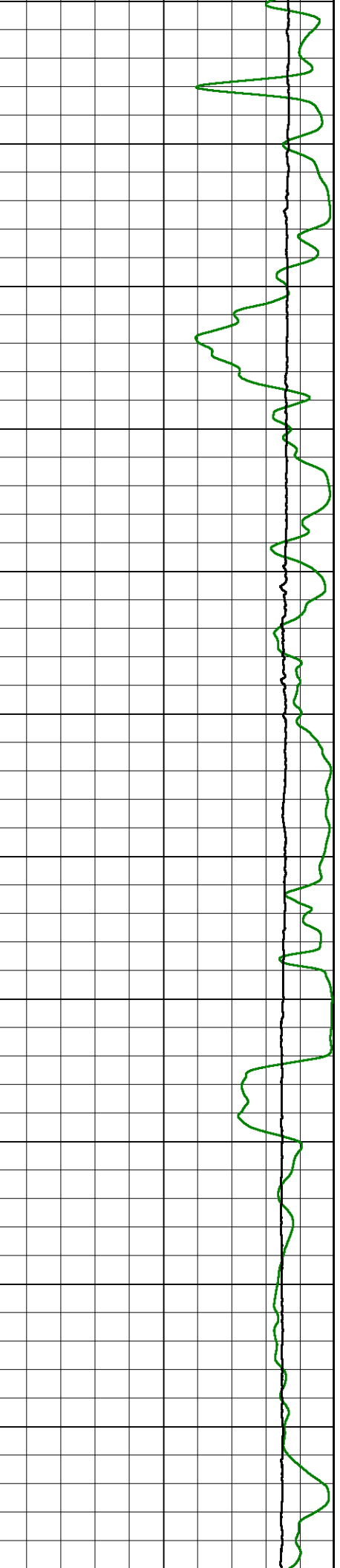
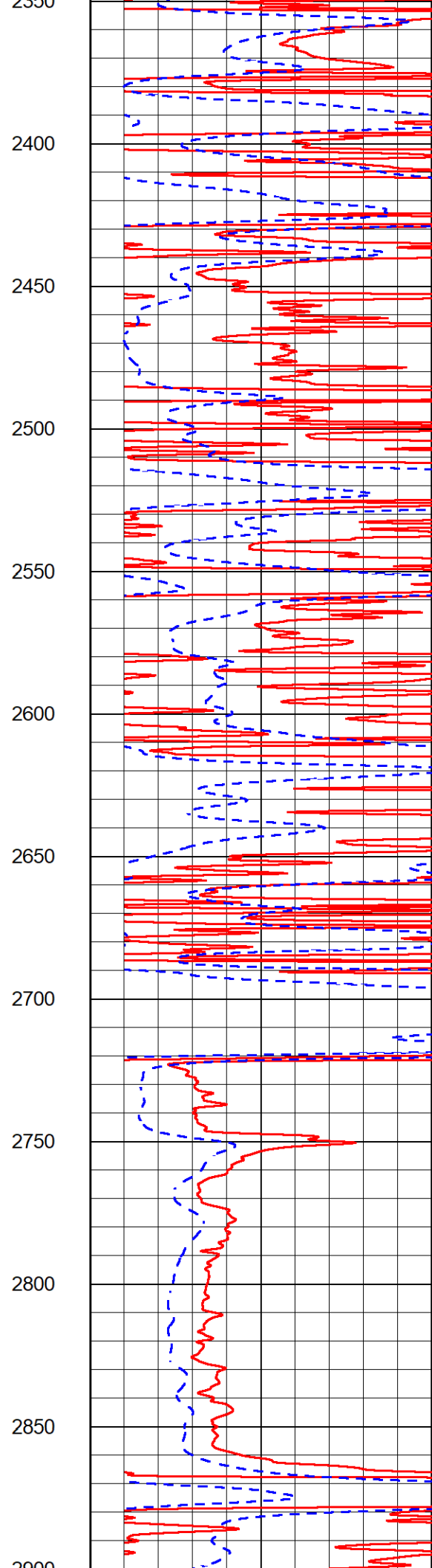
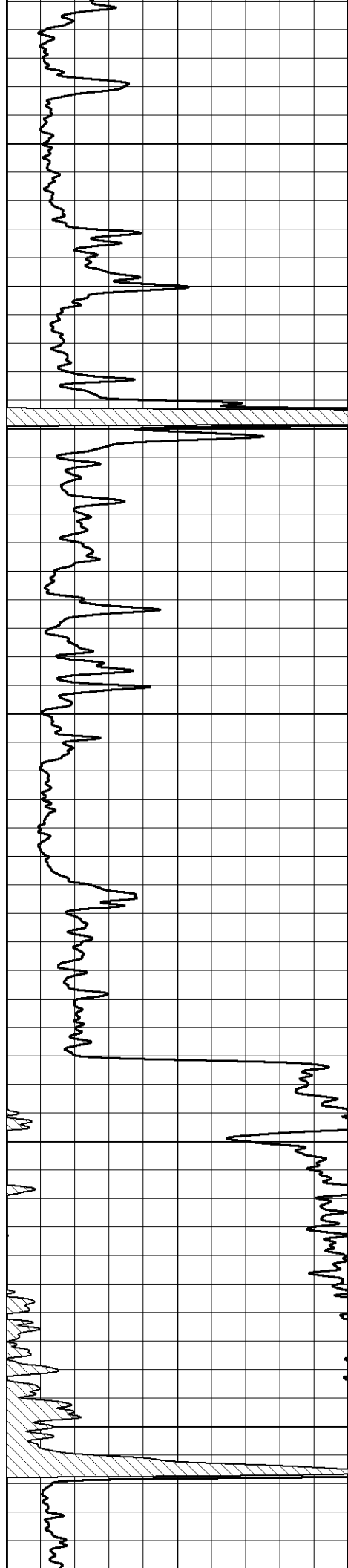


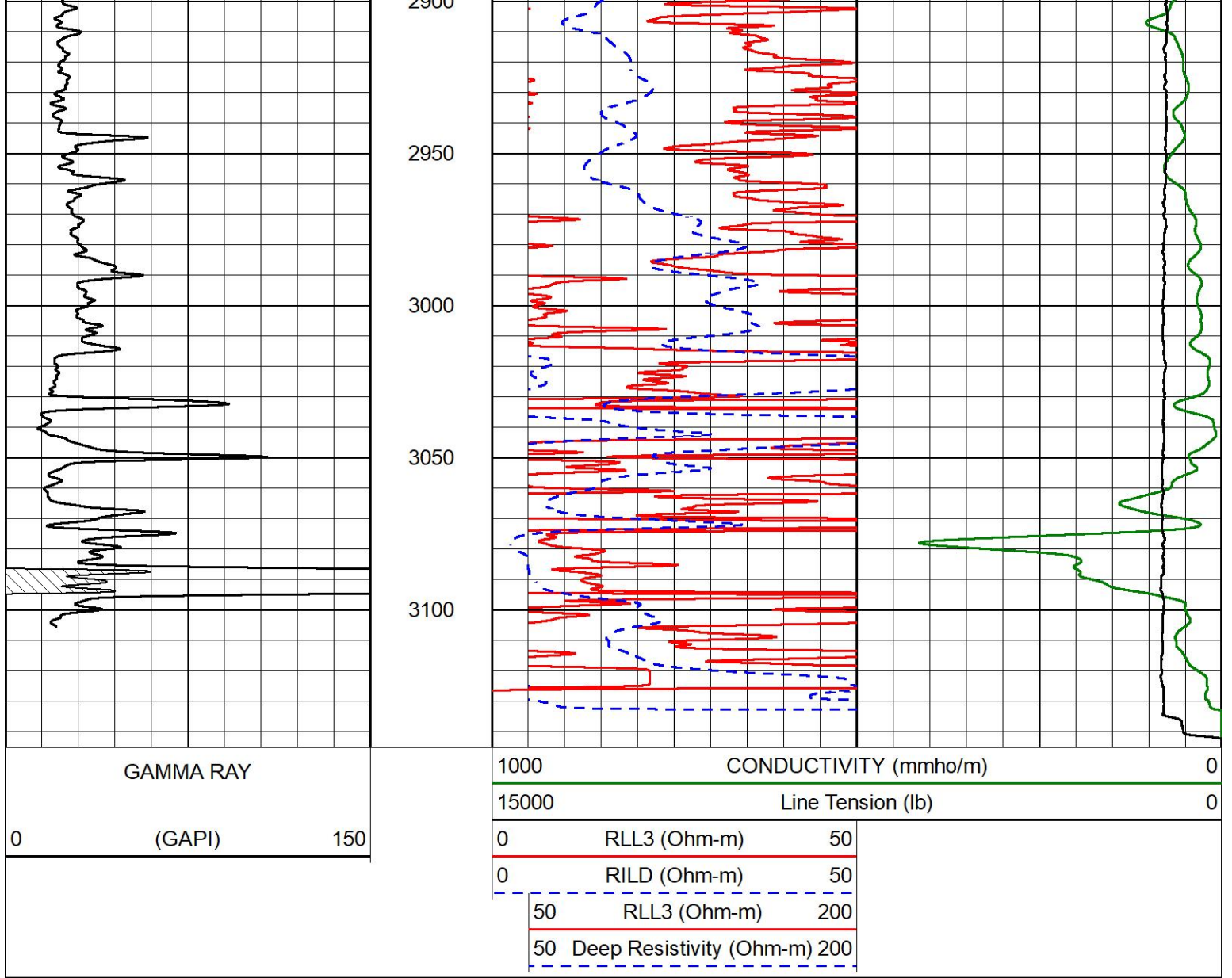
700
750
800
850
900
950
1000
1050
1100
1150
1200
1250











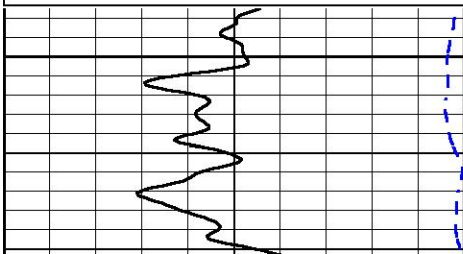
DETAIL SECTION

MAIN PASS

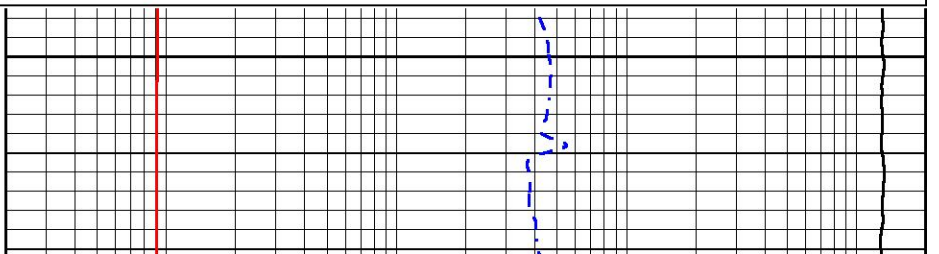
Database File norstar_blu1-22.db
 Dataset Pathname stack/pass3.1
 Presentation Format _dil
 Dataset Creation Sun Sep 12 04:07:32 2021
 Charted by Depth in Feet scaled 1:240

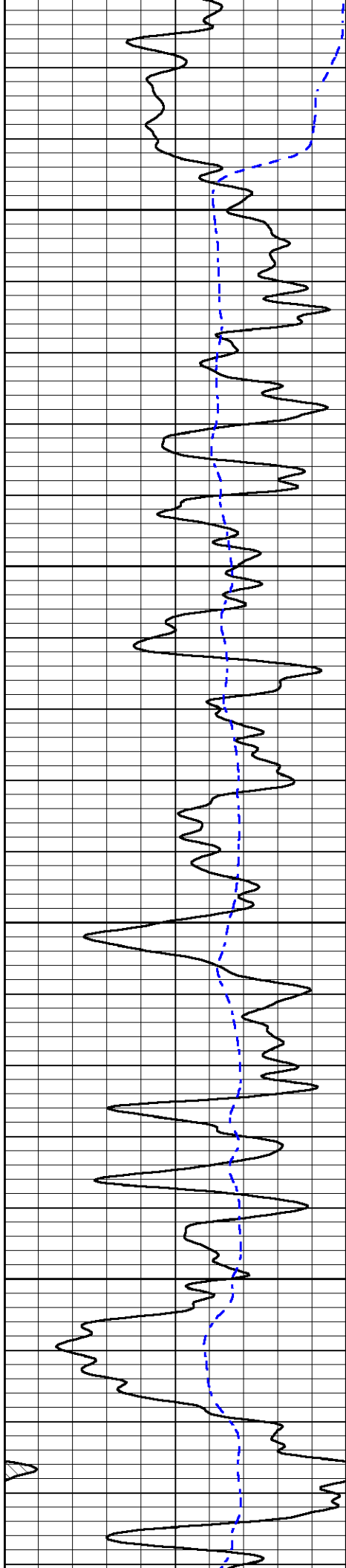
0 GAMMA RAY (GAPI) 150
 -200 SP (mV) 0

0.2 DEEP RESISTIVITY (Ohm-m) 2000
 0.2 MEDIUM RESISTIVITY (Ohm-m) 2000
 0.2 RLL3 (Ohm-m) 2000
 10000 LINE TENSION (lb) 0



200



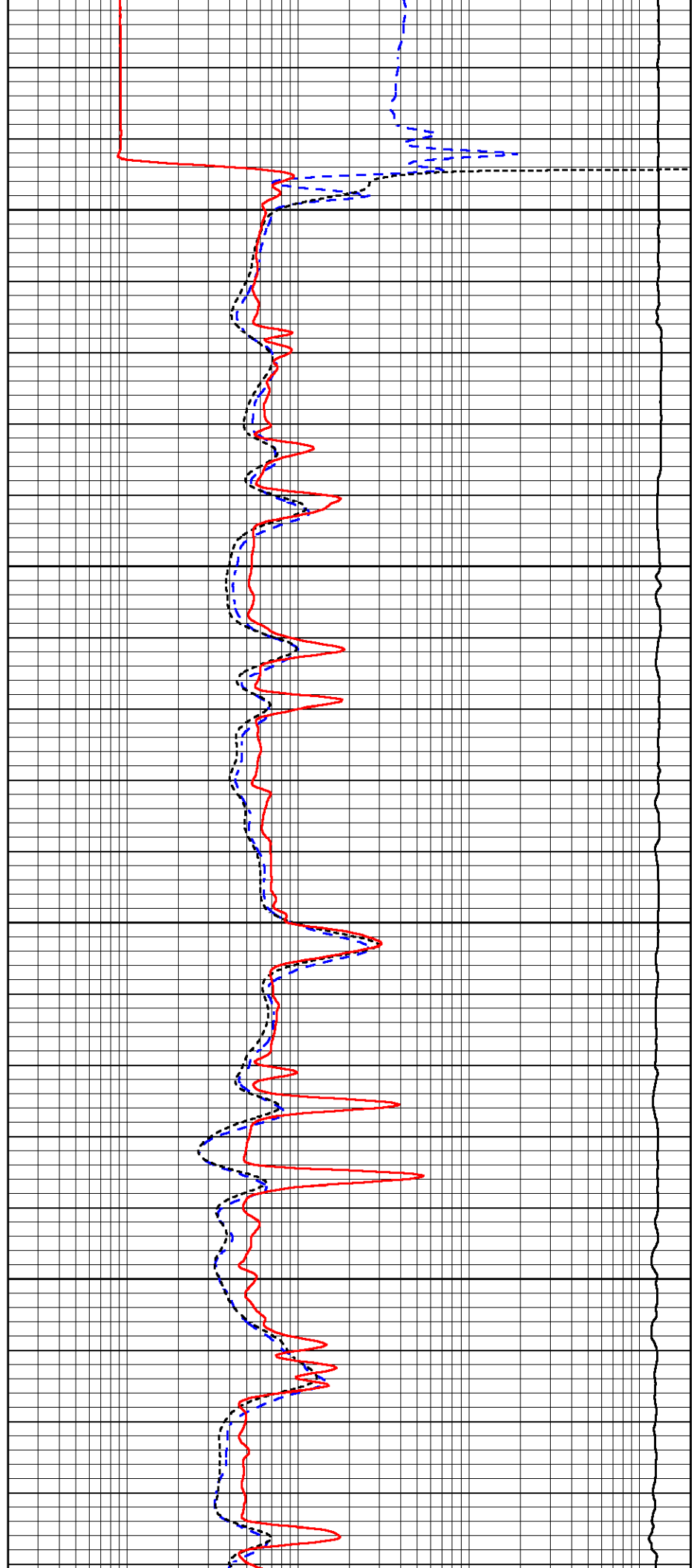


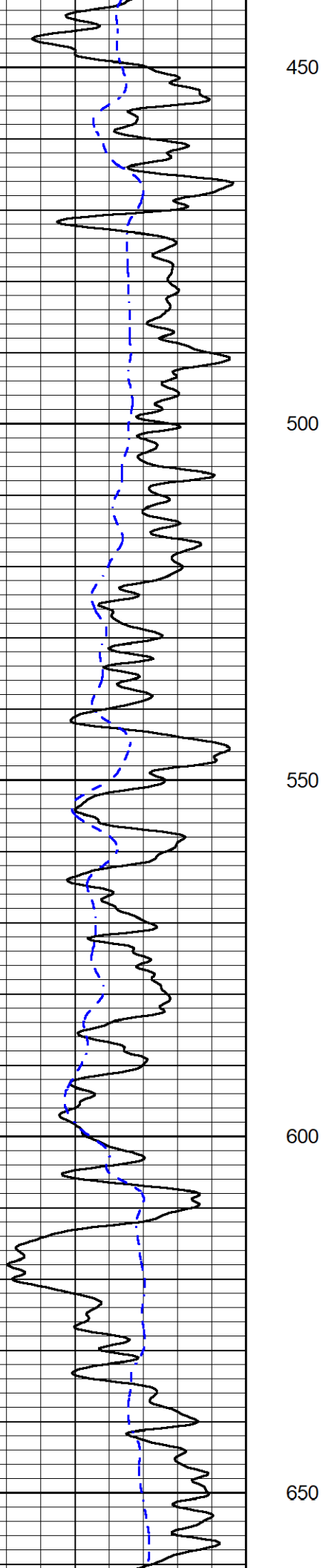
250

300

350

400





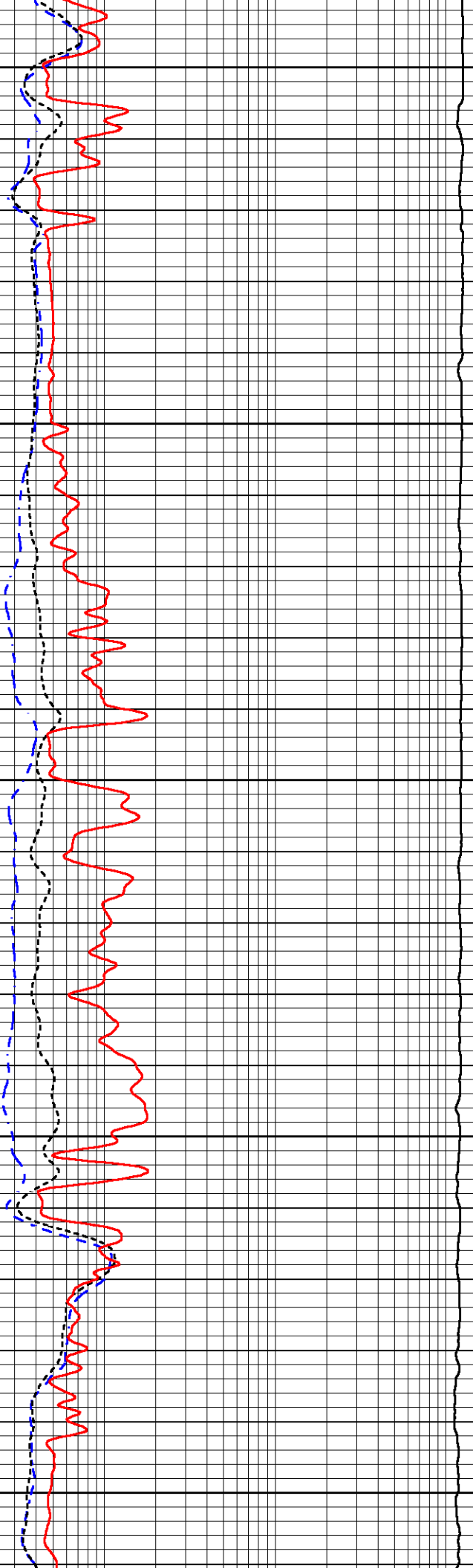
450

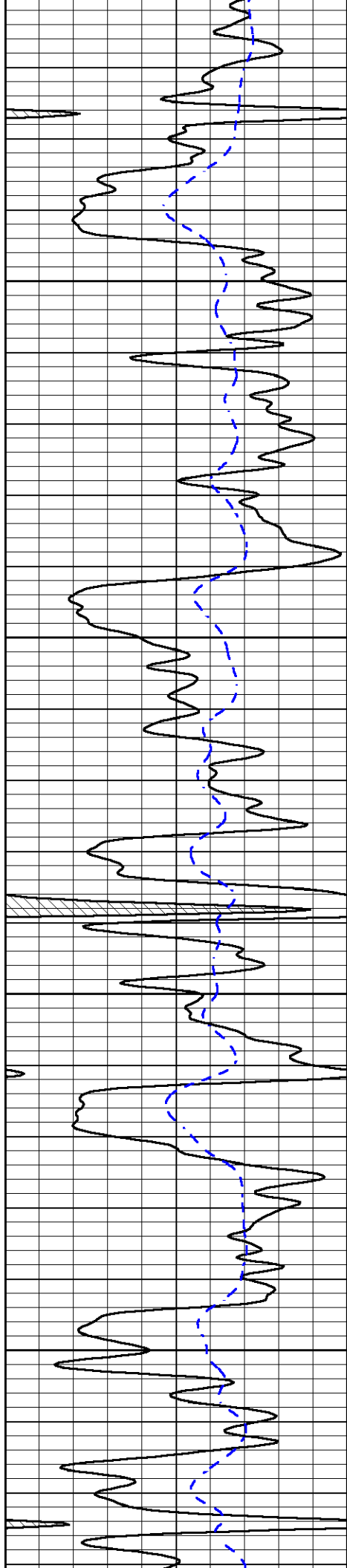
500

550

600

650



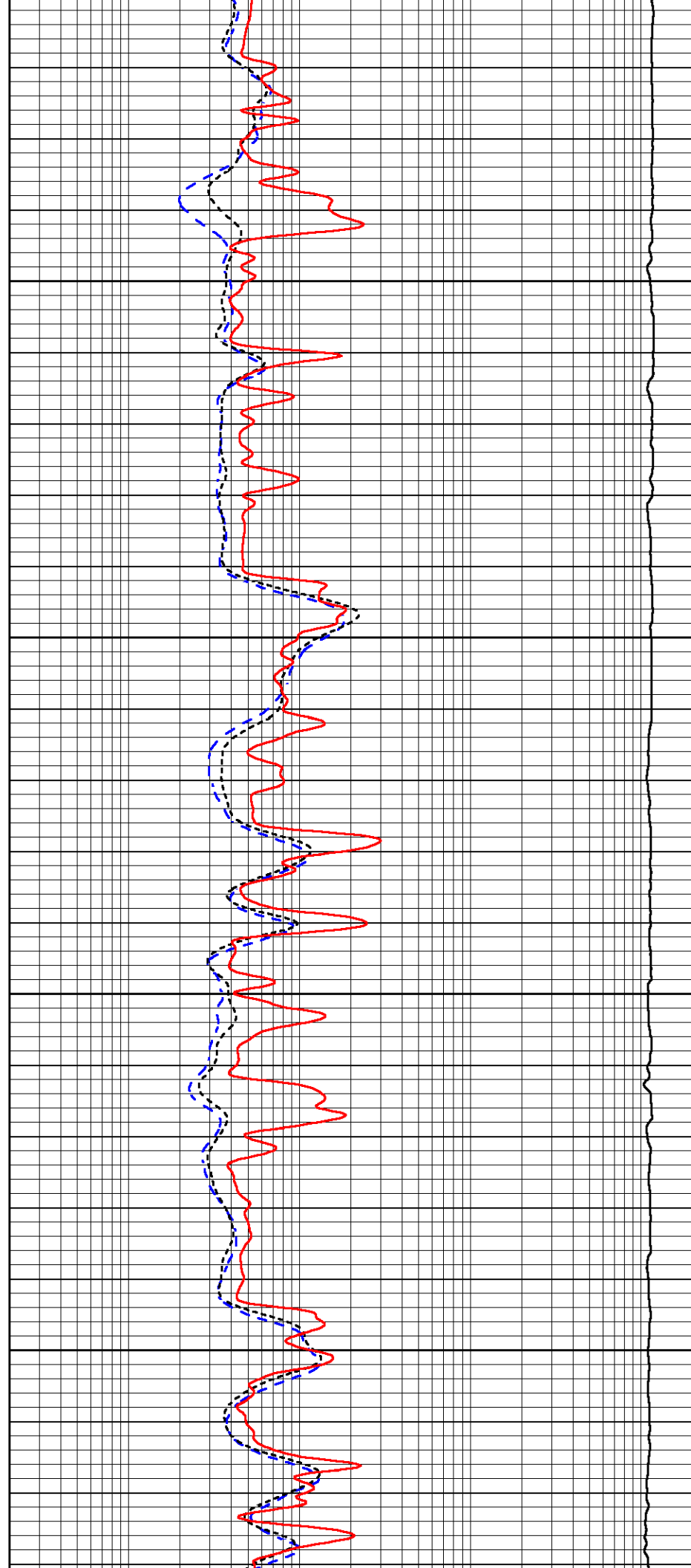


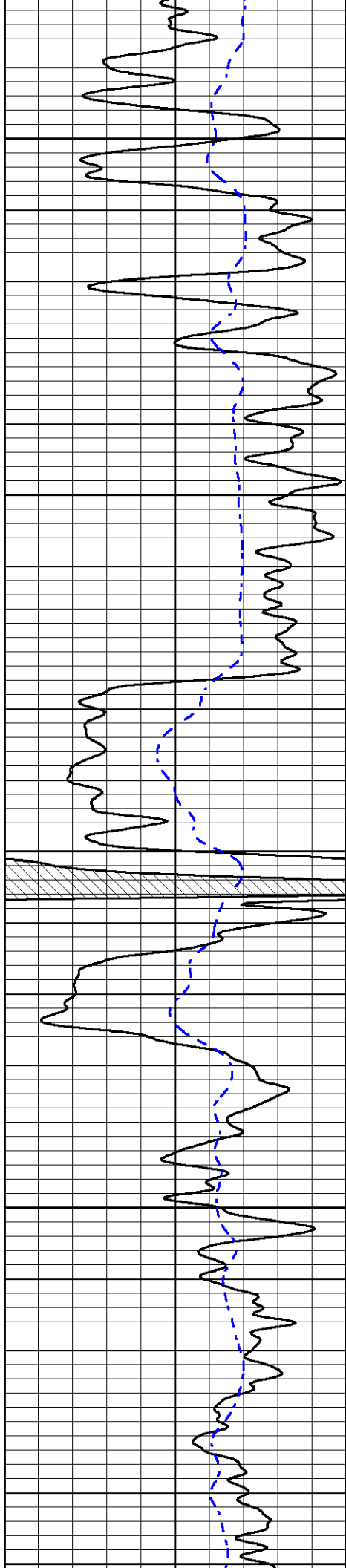
700

750

800

850





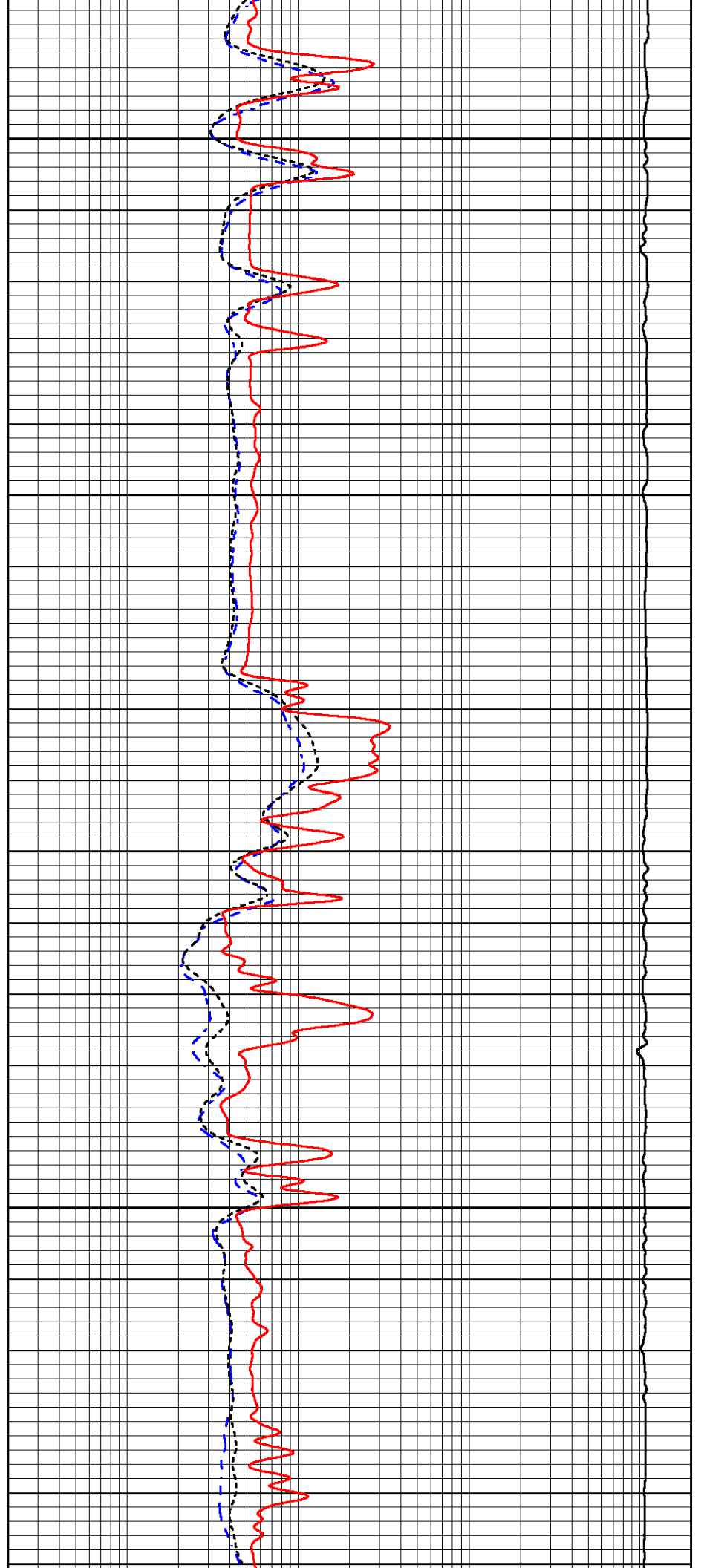
900

950

1000

1050

1100



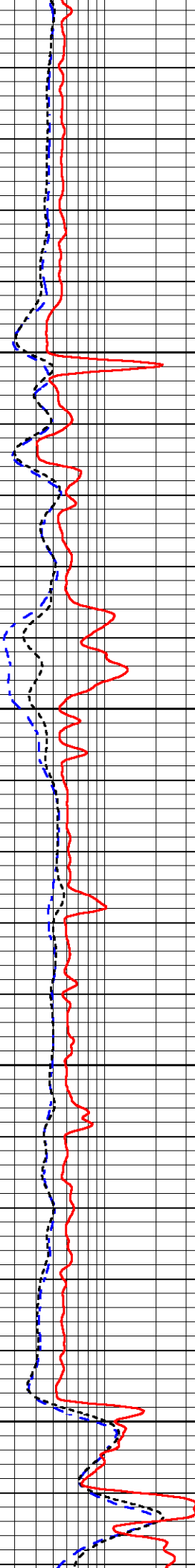
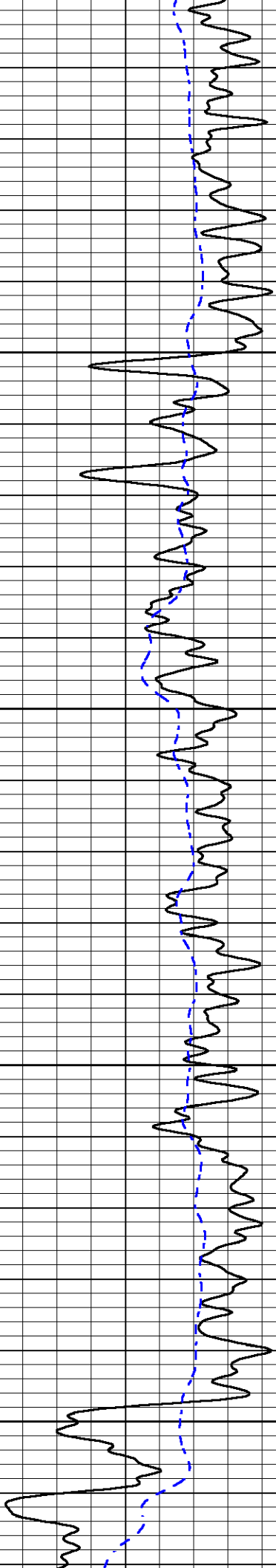
1100

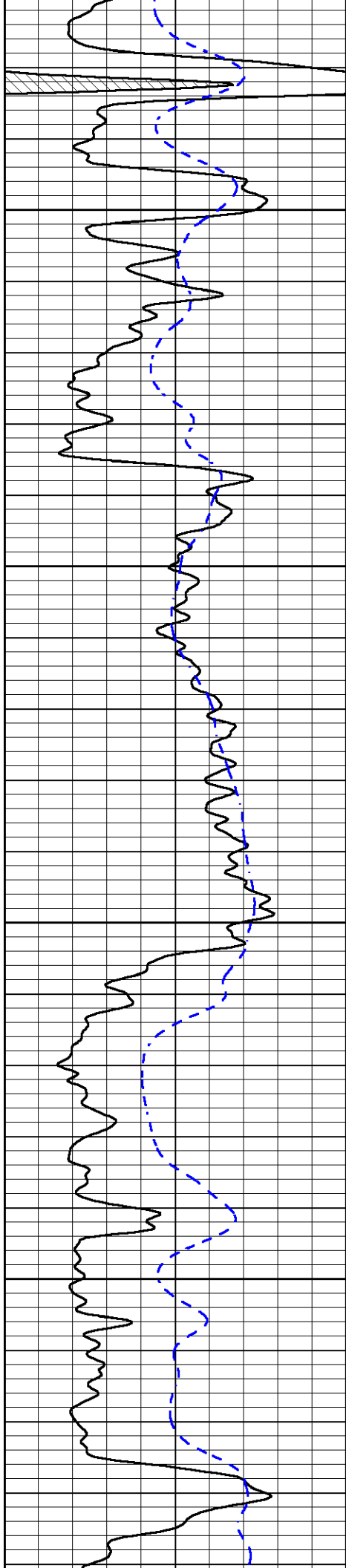
1150

1200

1250

1300



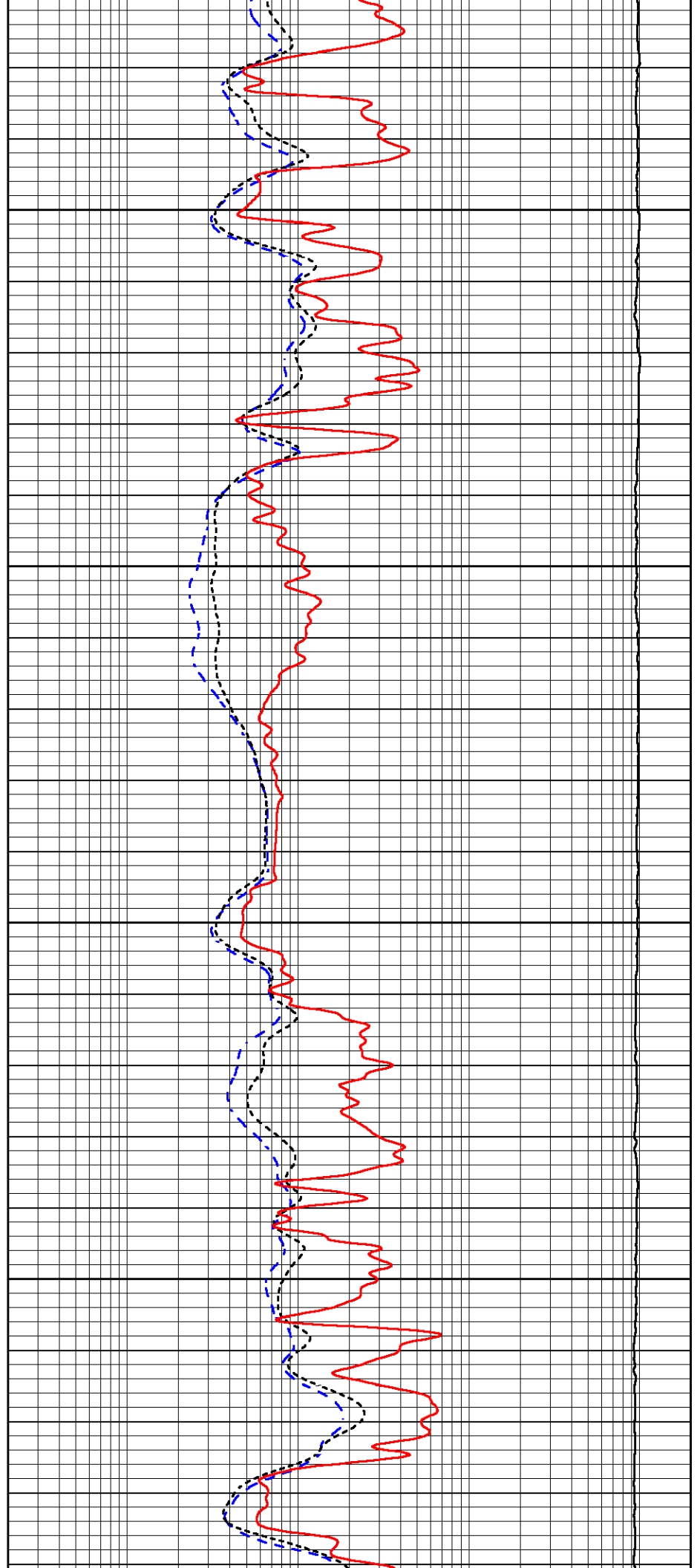


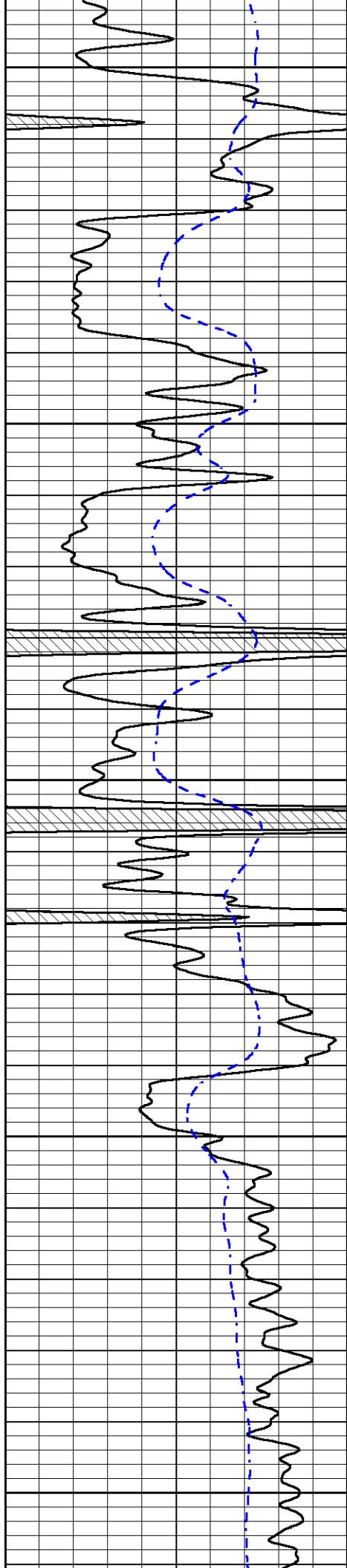
1350

1400

1450

1500





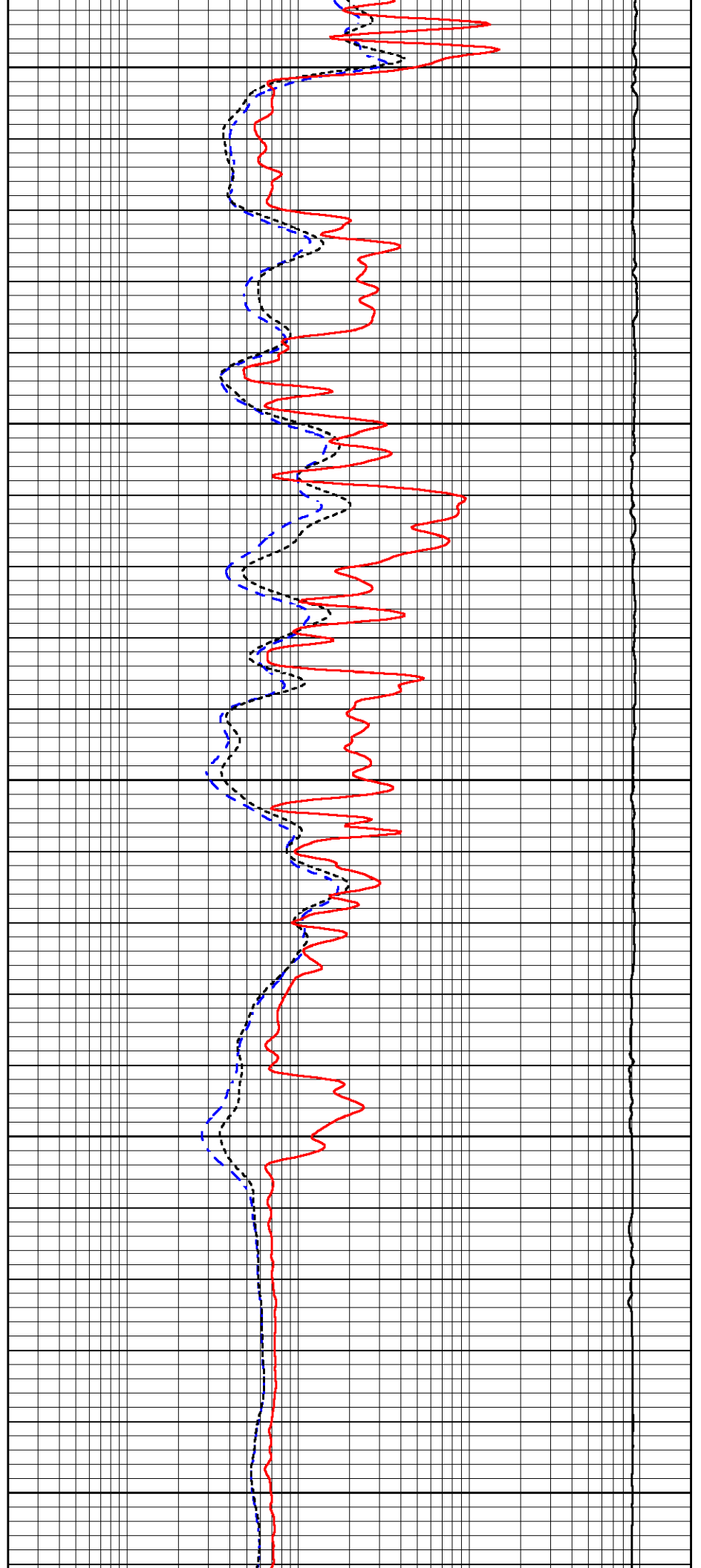
1550

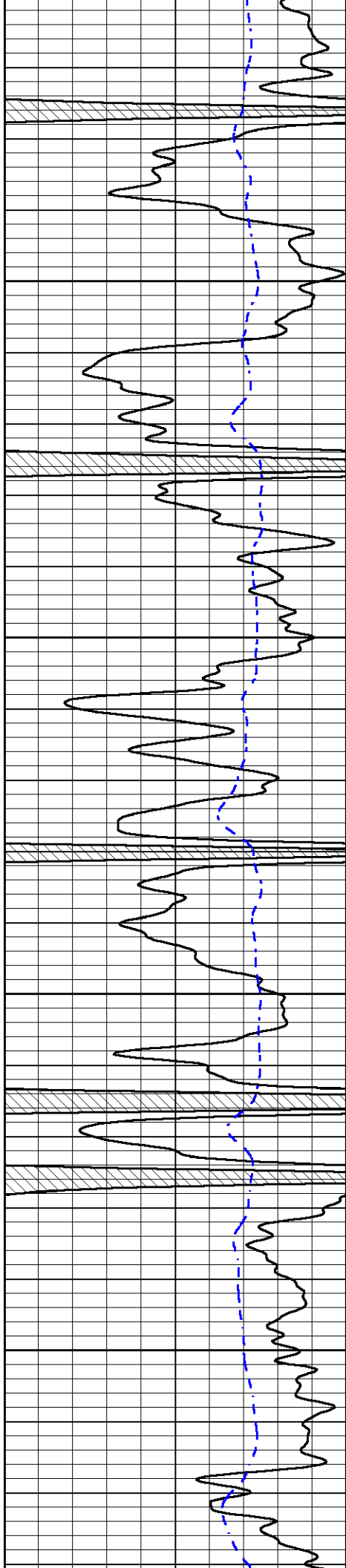
1600

1650

1700

1750



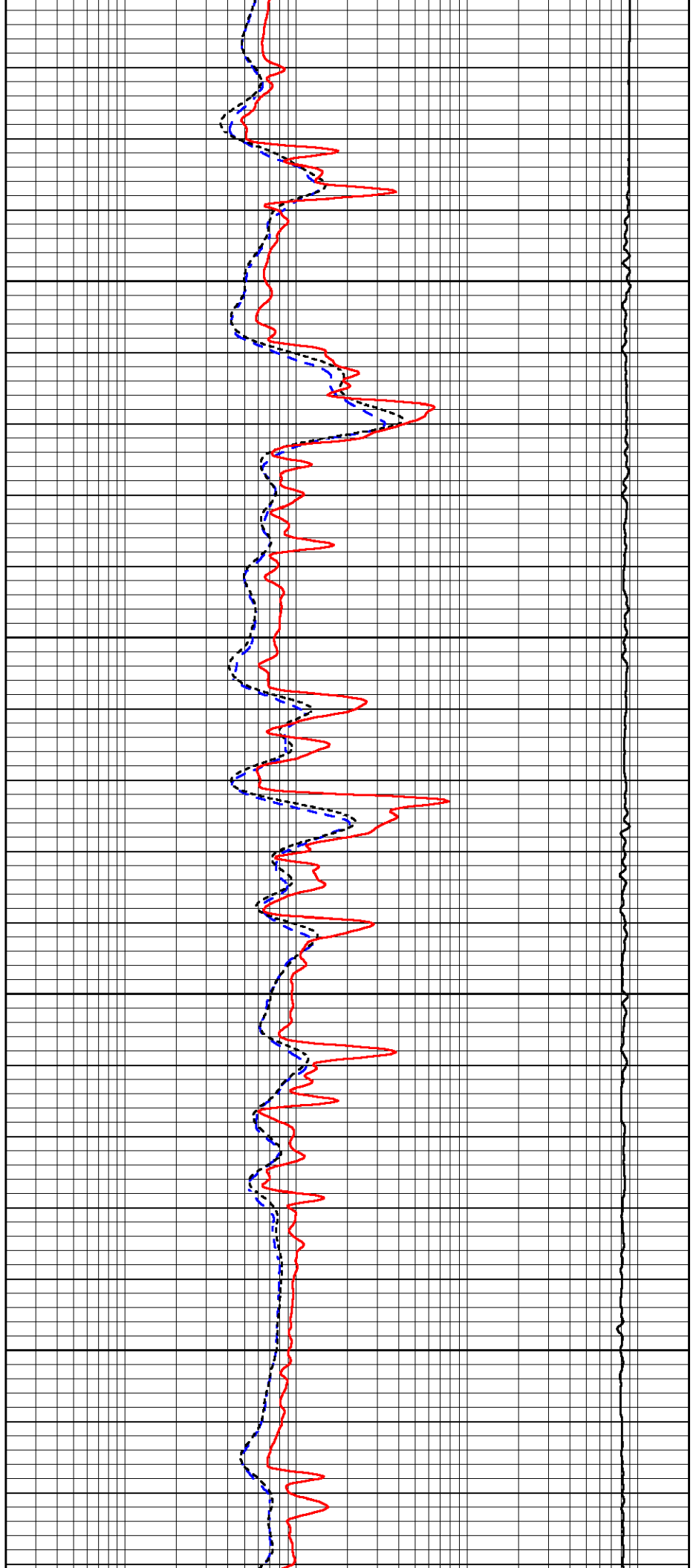


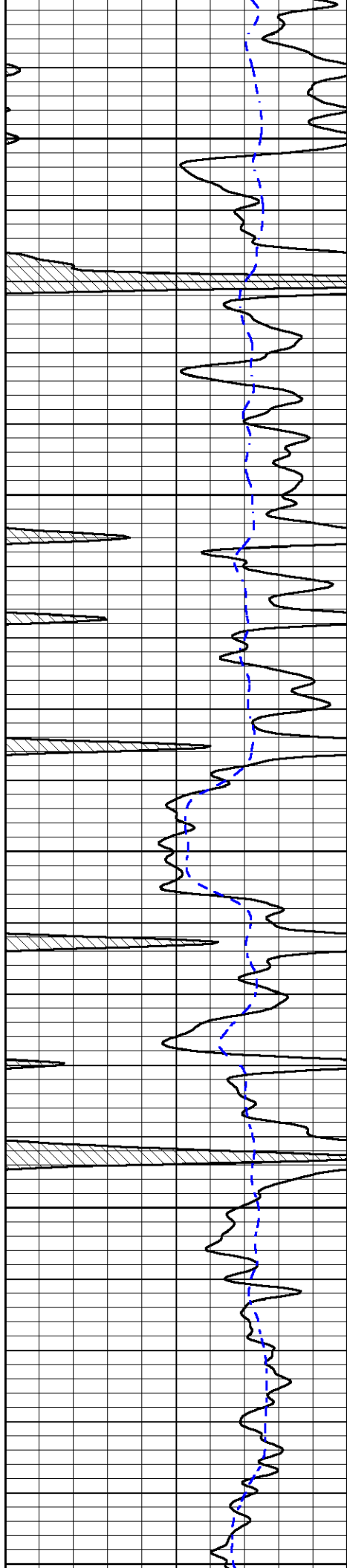
1800

1850

1900

1950





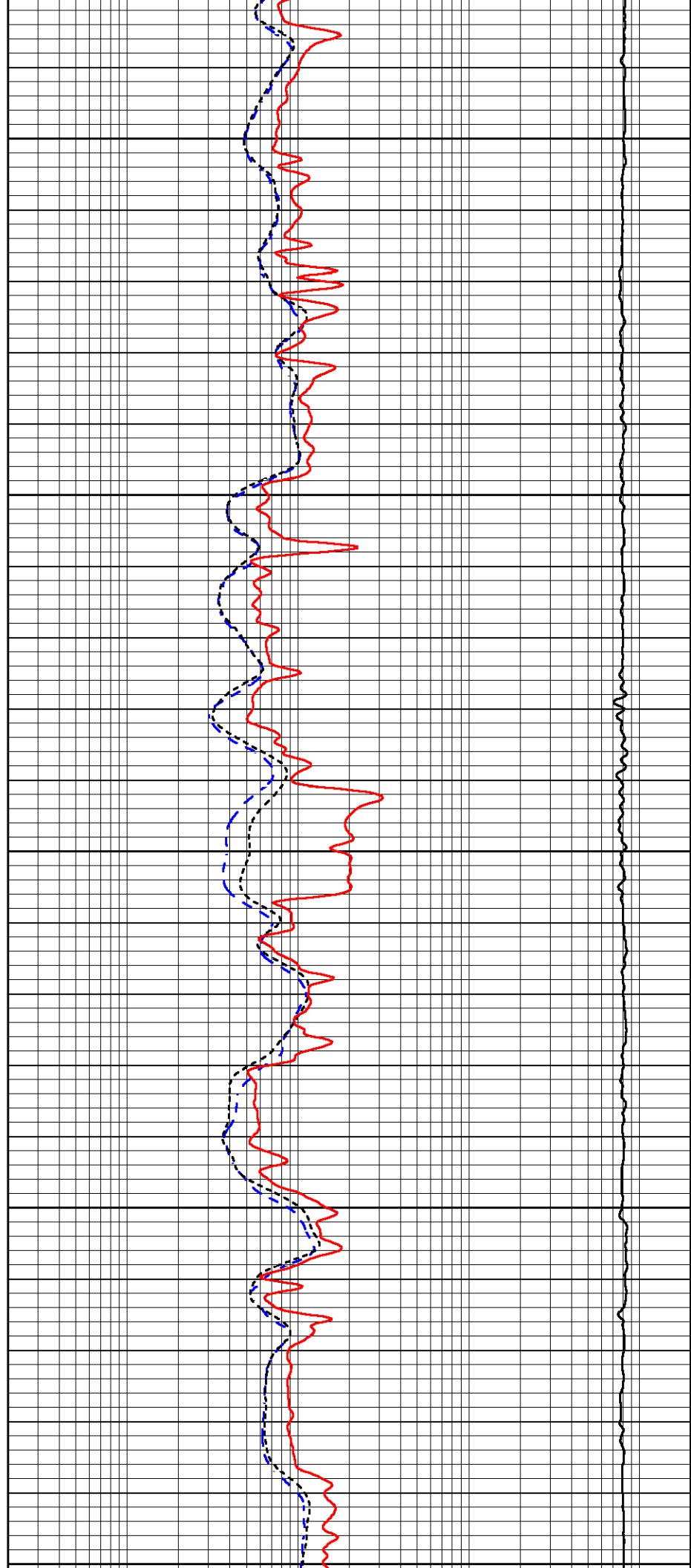
2000

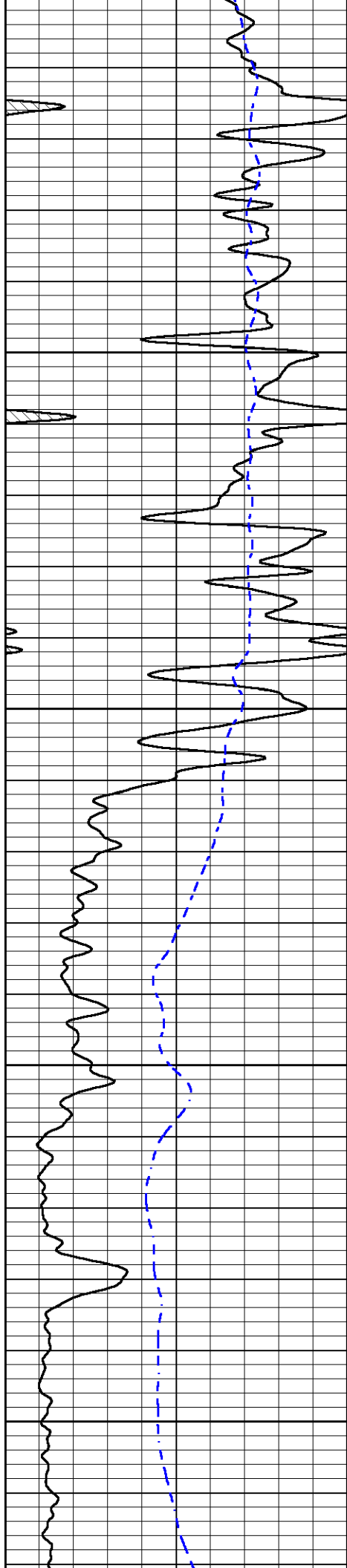
2050

2100

2150

2200





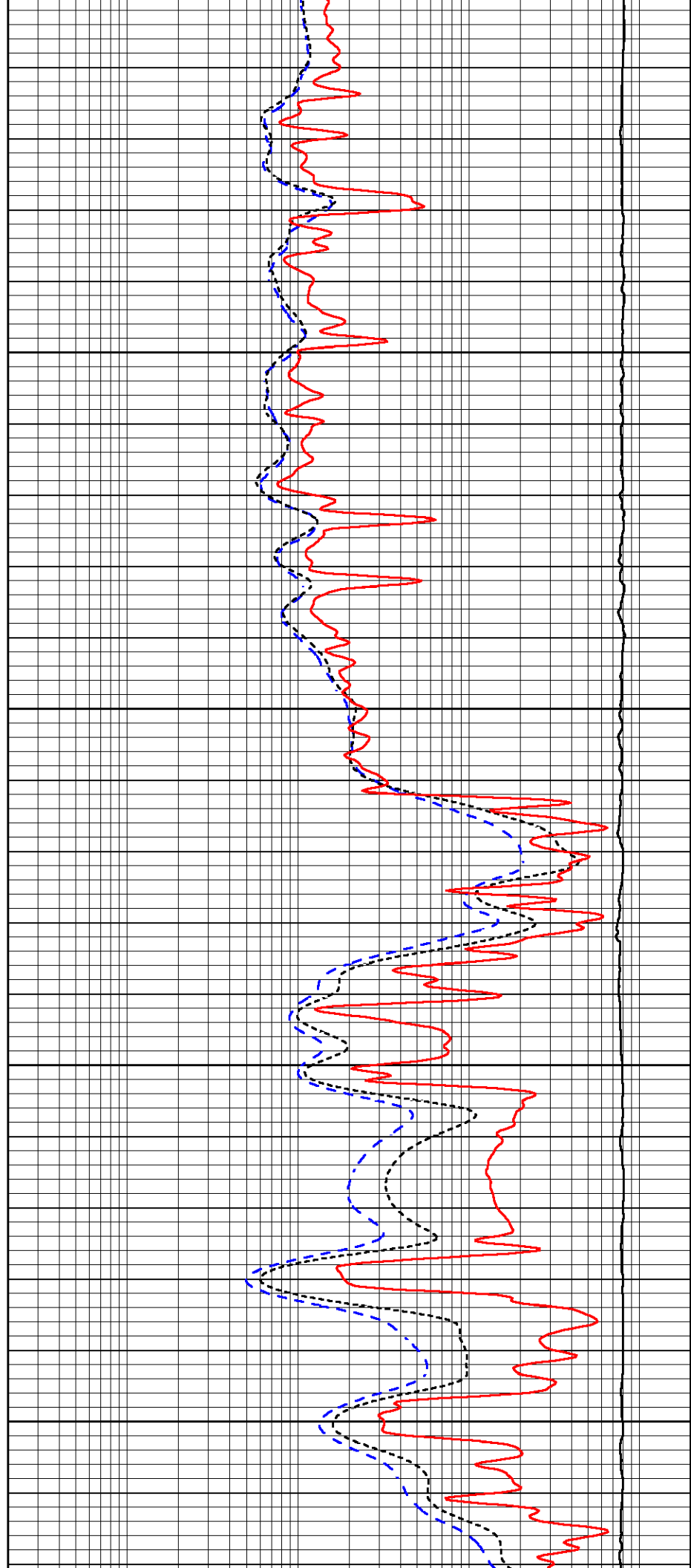
2200

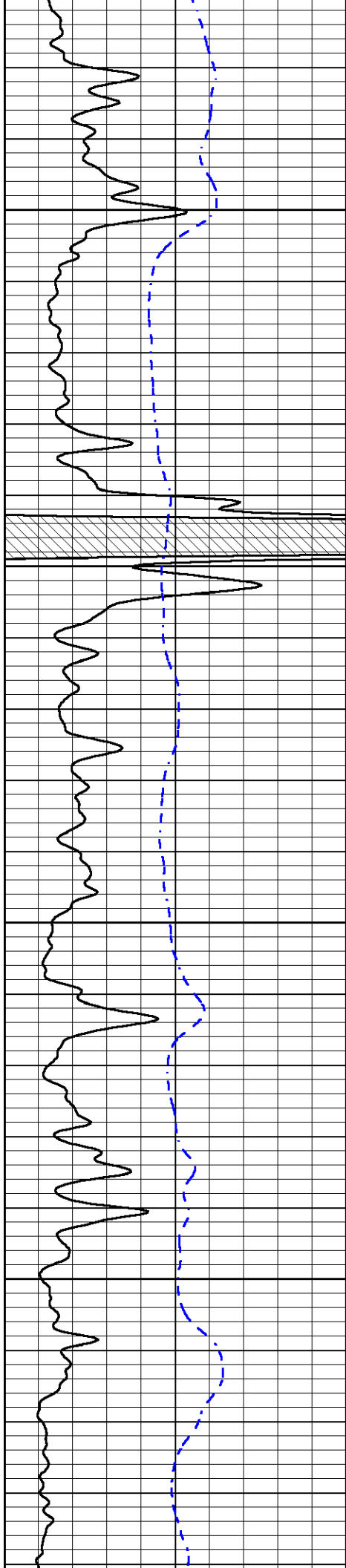
2250

2300

2350

2400



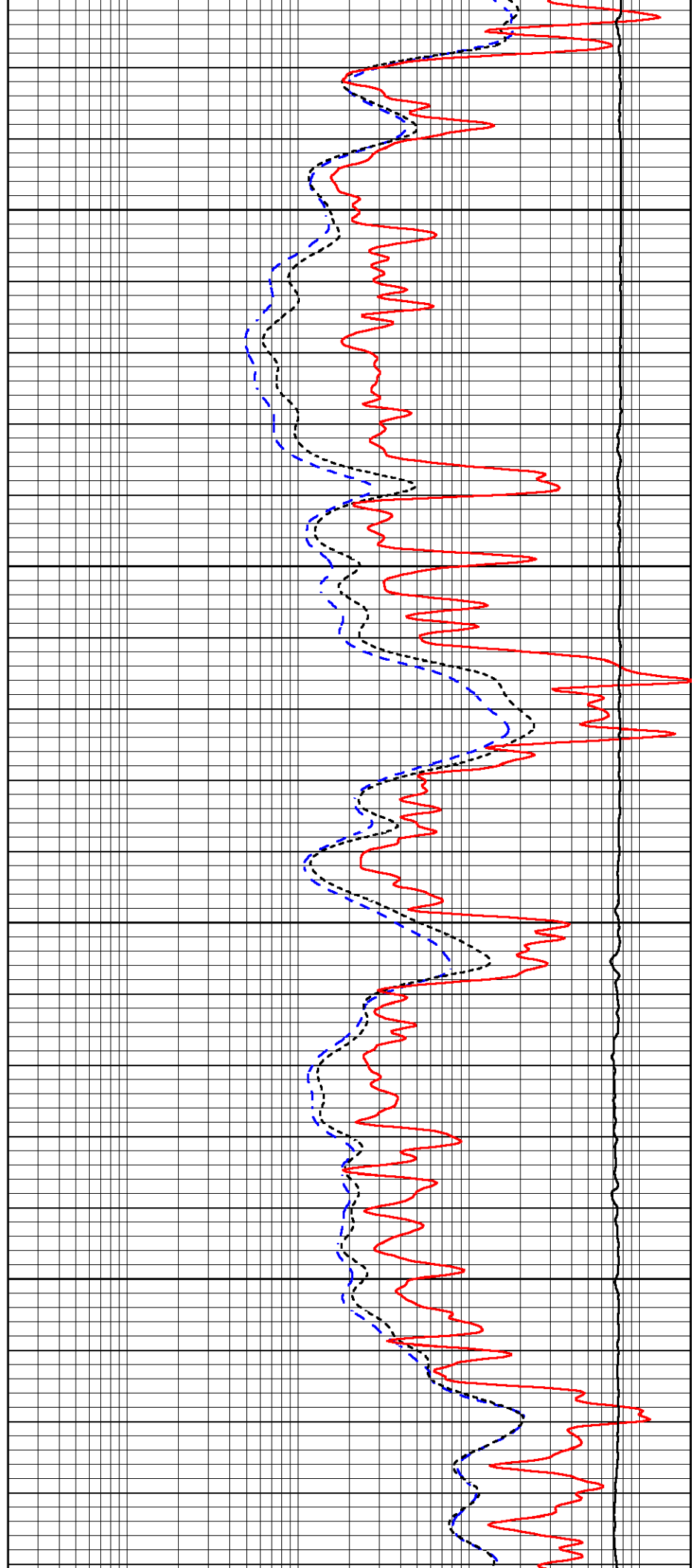


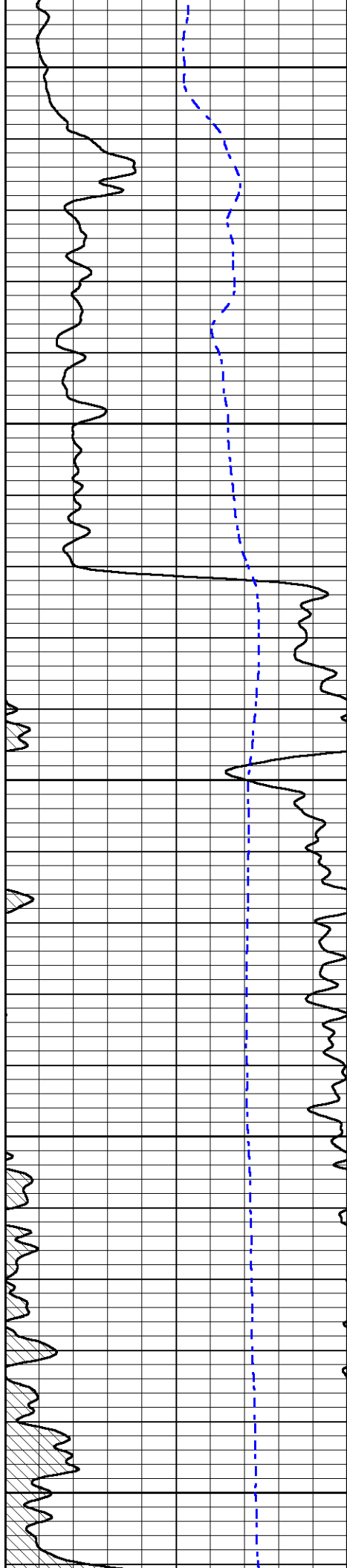
2450

2500

2550

2600





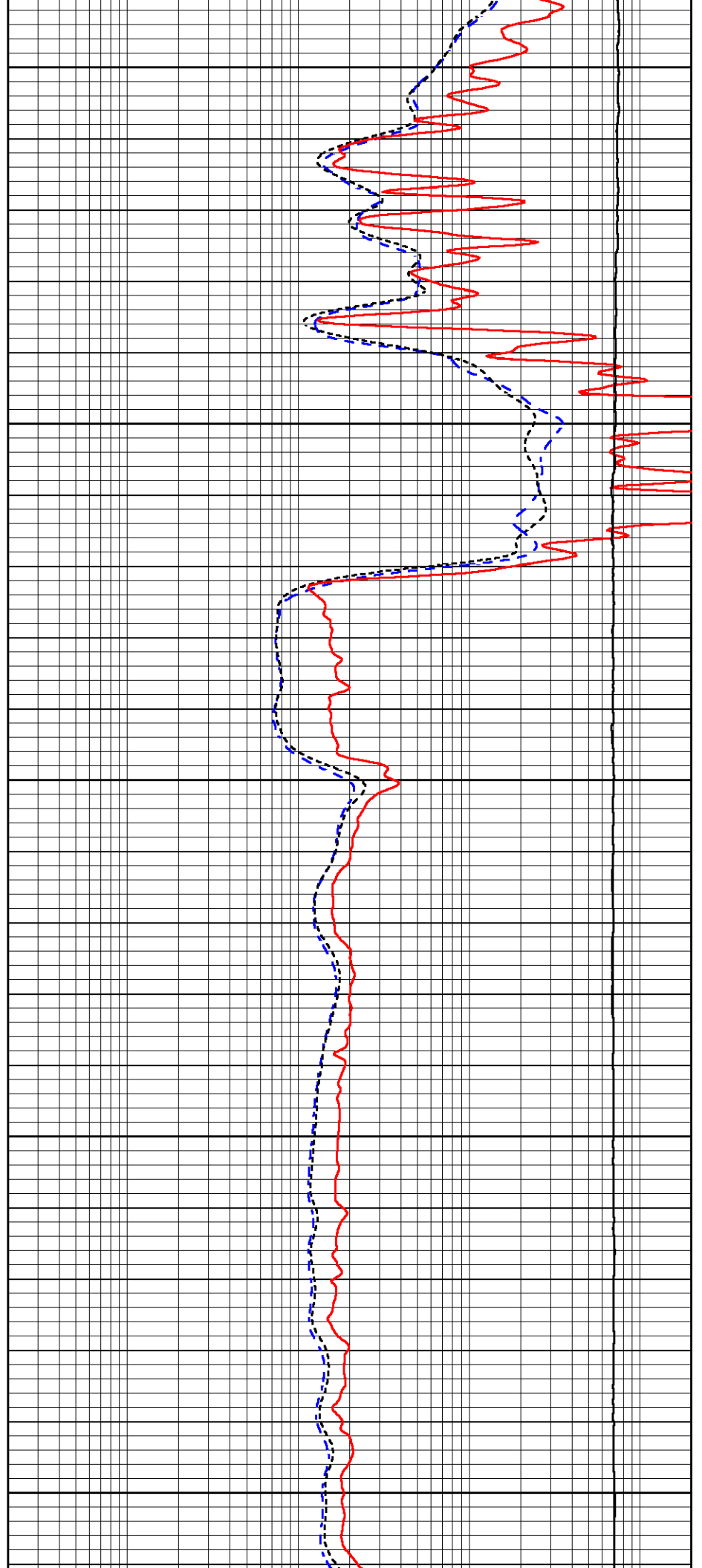
2650

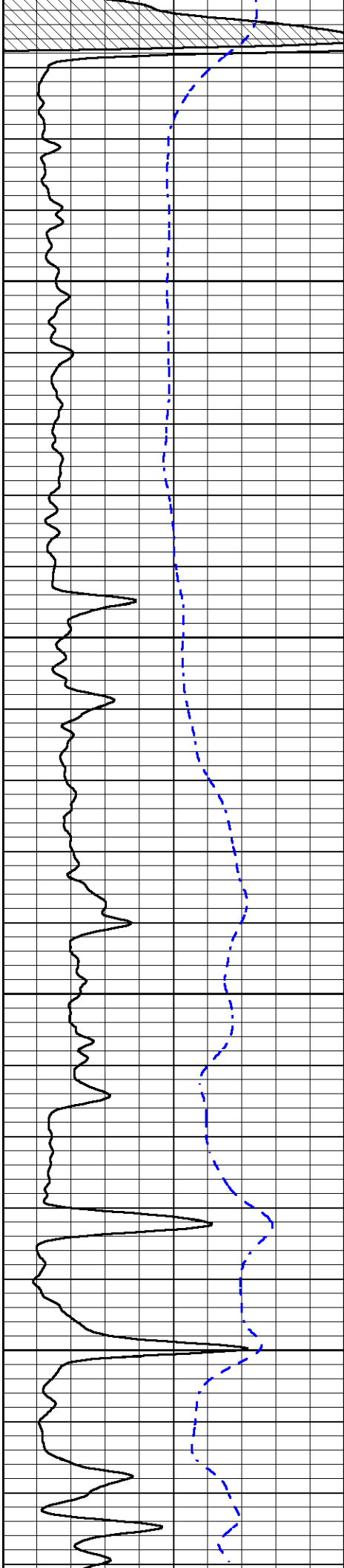
2700

2750

2800

2850



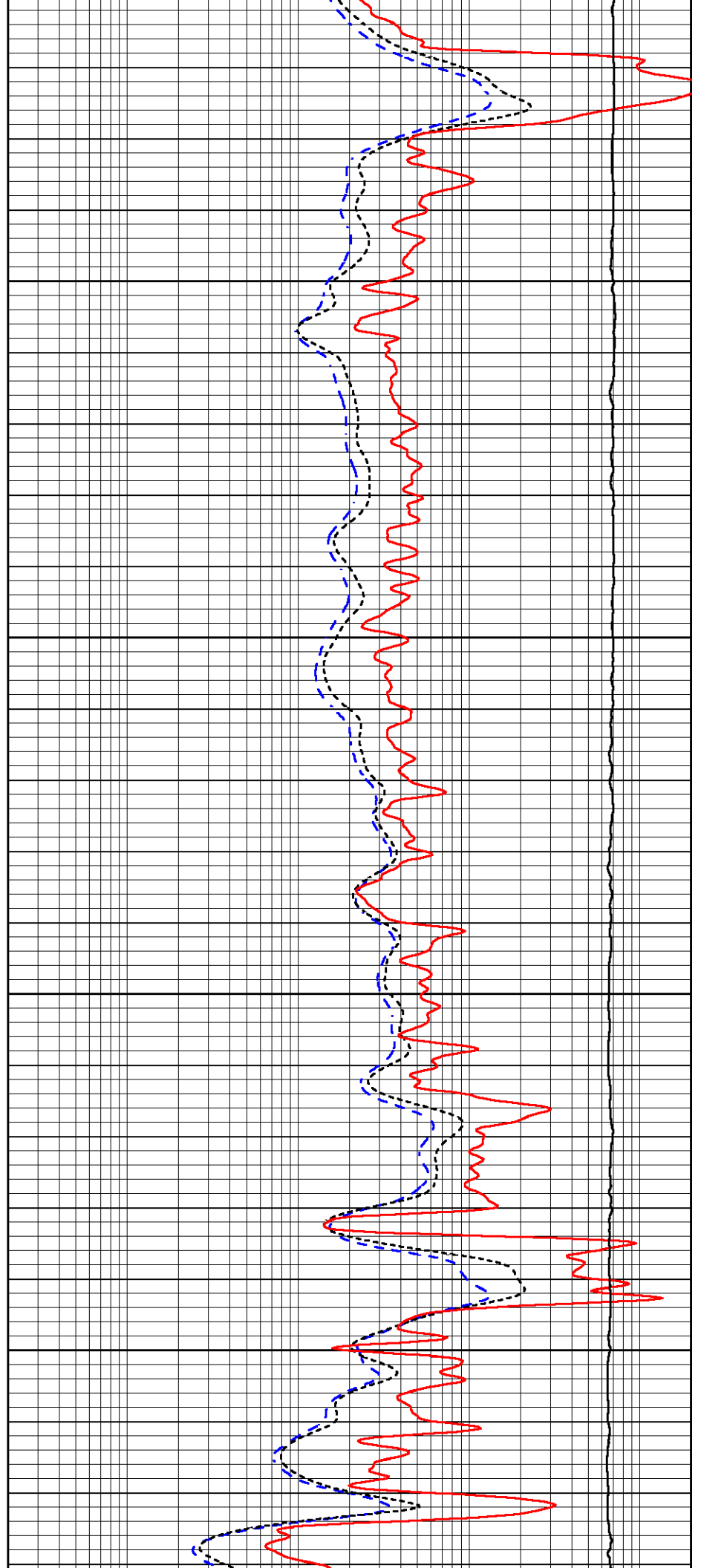


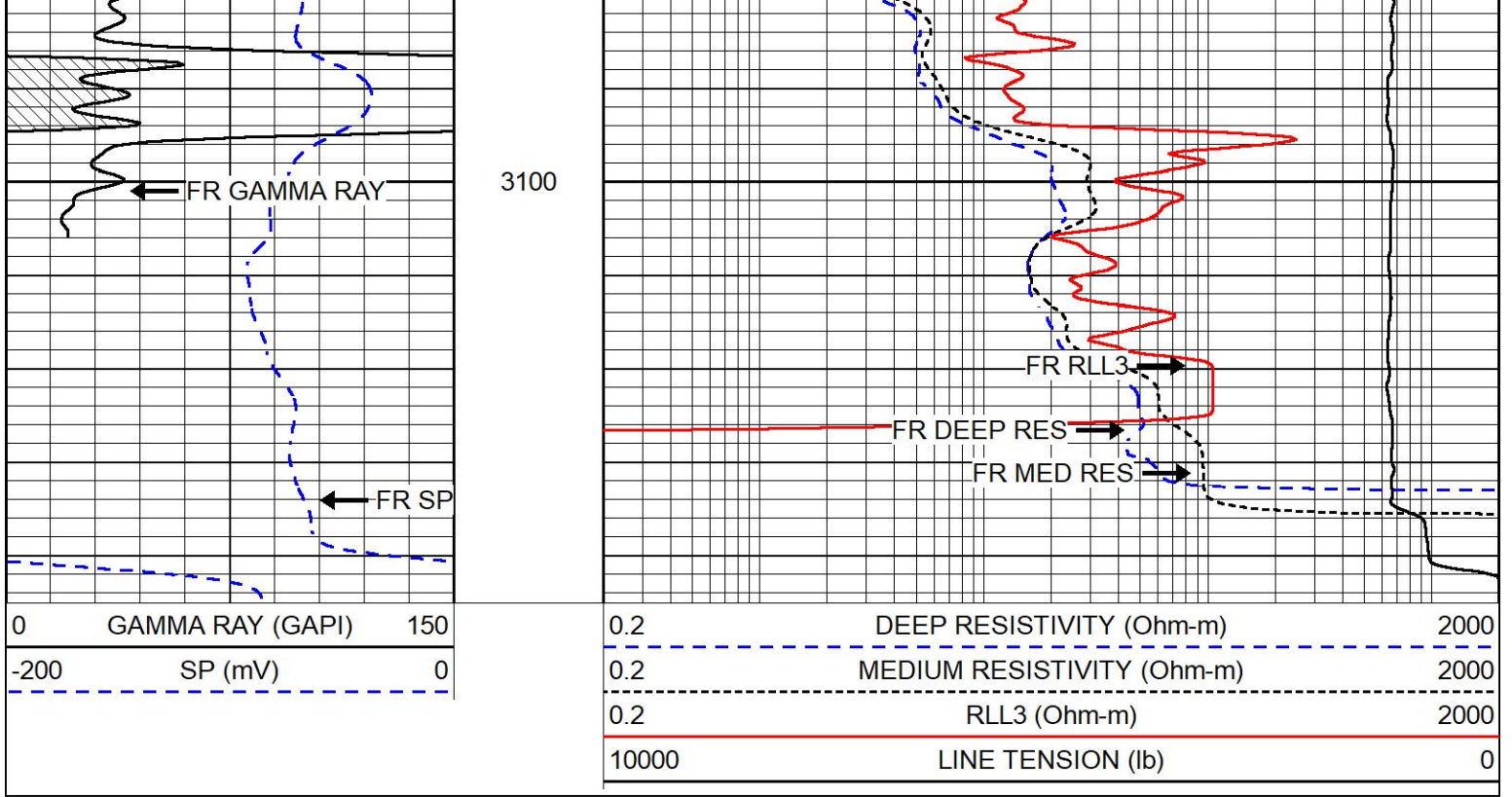
2900

2950

3000

3050



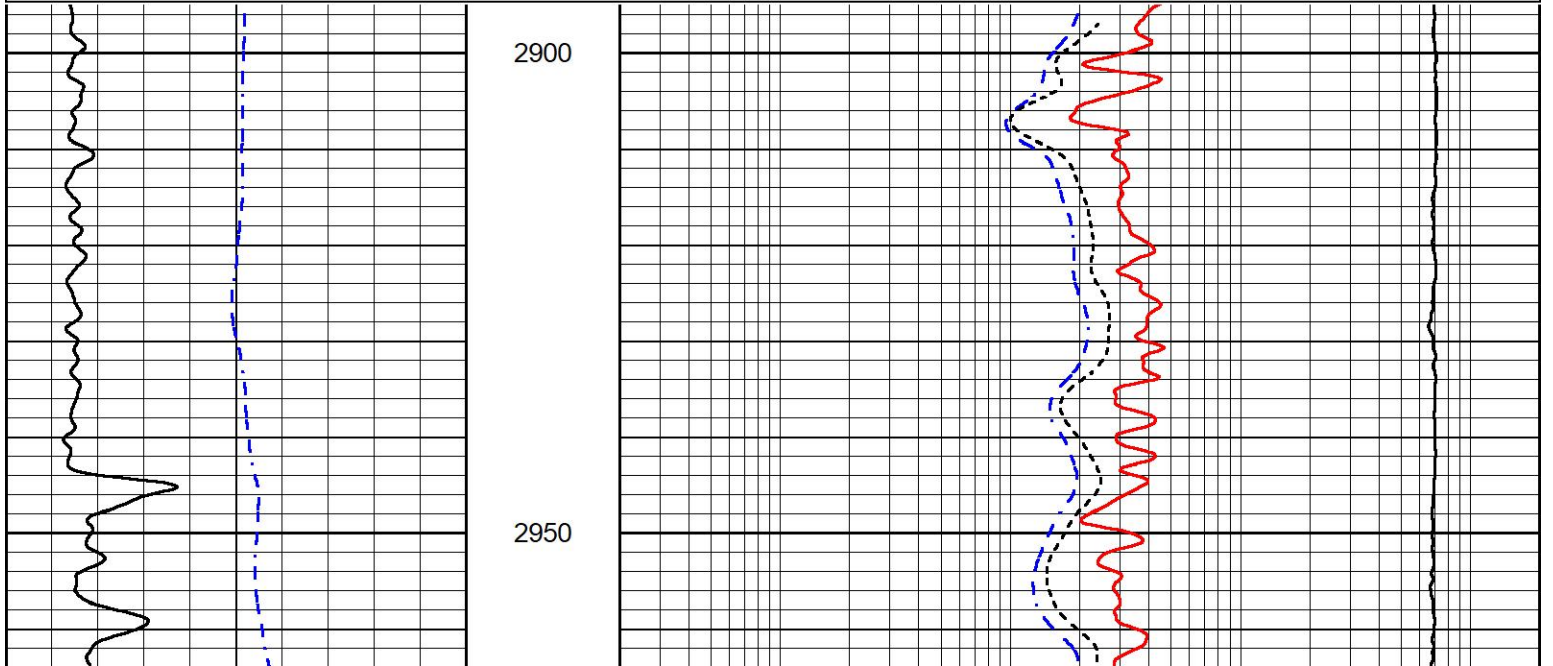
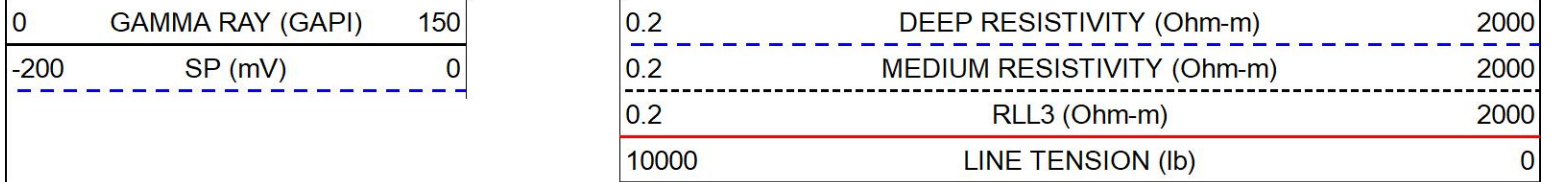


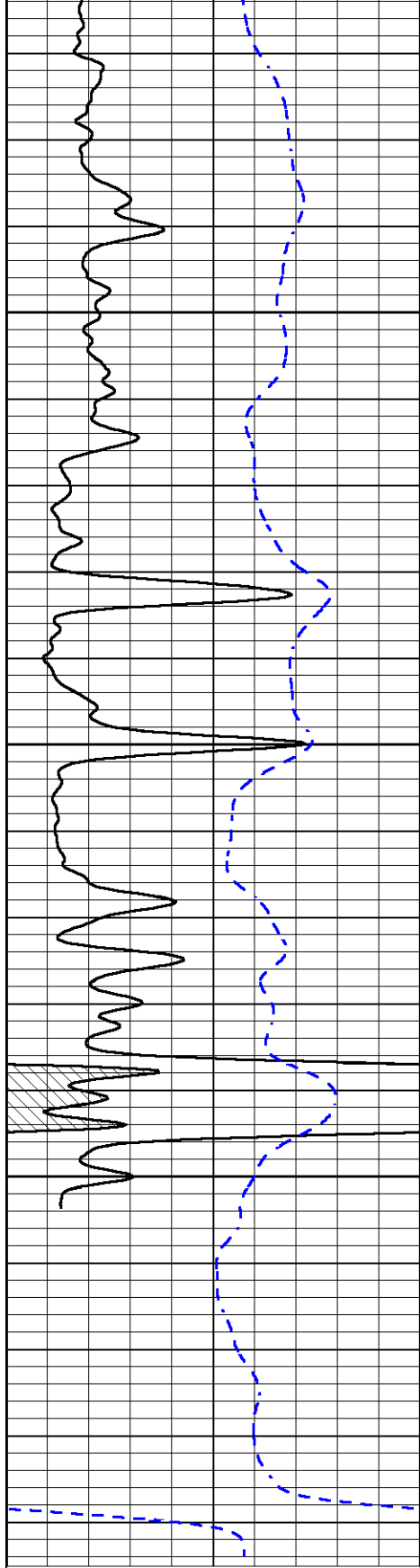
MIDWEST WIRELINE

REPEAT SECTION

REPEAT PASS

Database File norstar_blu1-22.db
 Dataset Pathname stack/pass2.1
 Presentation Format _dil
 Dataset Creation Sun Sep 12 03:45:46 2021
 Charted by Depth in Feet scaled 1:240



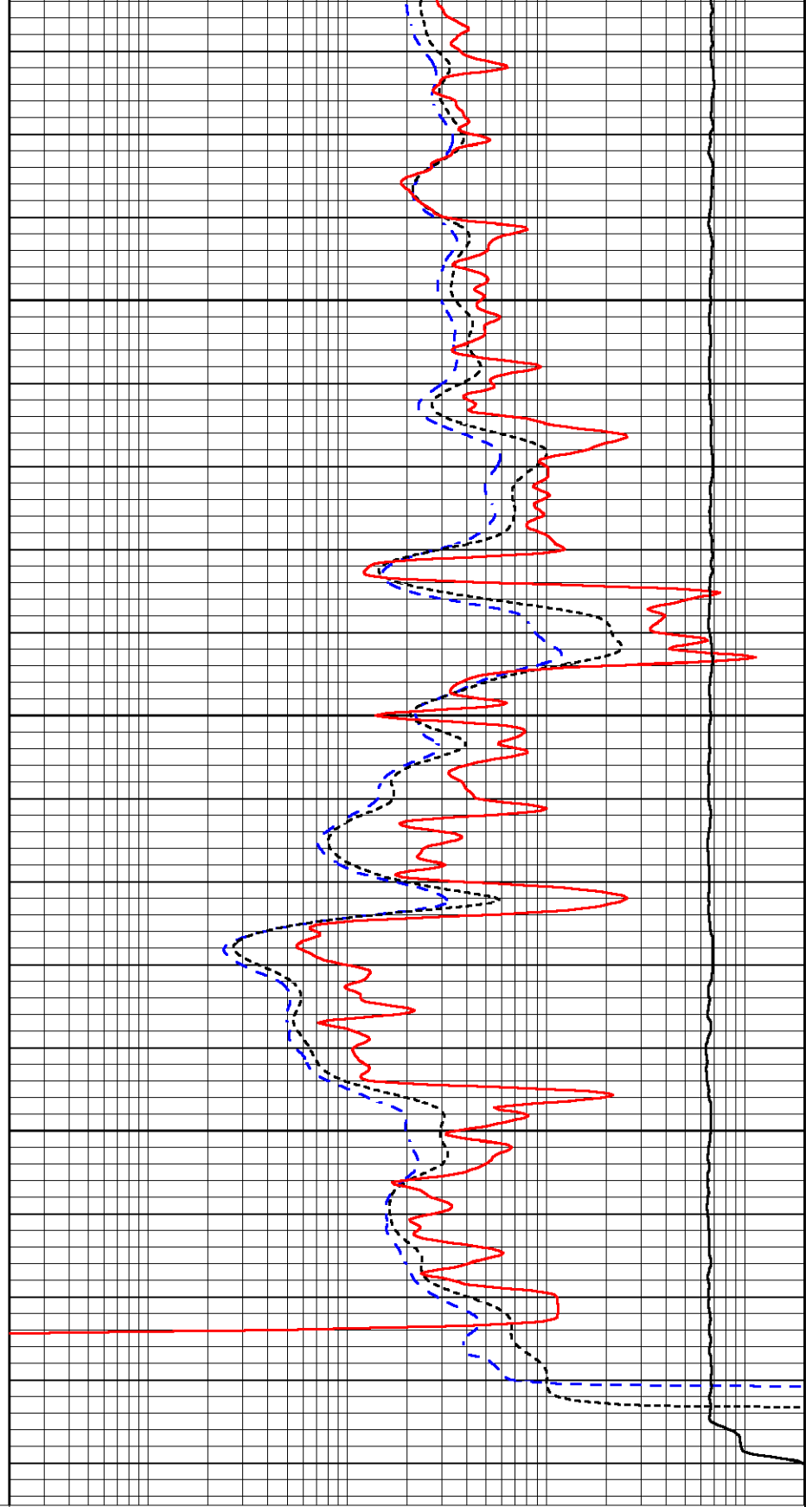


3000

3050

3100

0 GAMMA RAY (GAPI) 150
 -200 SP (mV) 0



0.2 DEEP RESISTIVITY (Ohm-m) 2000
 0.2 MEDIUM RESISTIVITY (Ohm-m) 2000
 0.2 RLL3 (Ohm-m) 2000
 10000 LINE TENSION (lb) 0



Company Norstar Petroleum Inc.
 Well BLU Unit #1-22



MIDWEST WIRELINE

Field	Unnamed
County	Lyon
State	Kansas