



MIDWEST SURVEYS
 LOGGING - PERFORATING - CONSULTING SERVICES
 P.O. Box 68, Osawatomie, KS 66064
 913 / 755 - 2128

GAMMA RAY / NEUTRON / CCL

File No. _____

Company **Colt Energy, Inc.**

Well **Conley No. - 27**

Field **Colony / Weida Southeast**

County **Allen** State **Kansas**

Location **2416' FSL & 1925' FWL**

NW-NE-SW

Other Services **Perforate**

Sec. 19 Twp. 23S Rge. 20E Elevation 1042'

Permanent Datum **GL** K.B. NA

Log Measured From **GL** D.F. NA

Drilling Measured From **GL** G.L. 1042'

Date **07-06-2021**

Run Number **One**

Depth Drier **740.0**

Depth Logger **717.2**

Bottom Logged Interval **716.2**

Top Log Interval **20.0**

Fluid Level **Full**

Type Fluid **Water**

Density / Viscosity **NA**

Salinity - PPM Cl **NA**

Max Recorded Temp **NA**

Estimated Cement Top **0.0**

Equipment No. **102** Location **Osawatomie**

Recorded By **Gary Windsch**

Witnessed By **Wes Woods**

BORE-HOLE RECORD				CASING RECORD			
RUN	BIT	FROM	TO	SIZE	WGT.	FROM	TO
One	12.25"	0.0	20.0	8.625"	24.0 #	0.0	20.0
Two	6.75"	20.0	740.0	4.50"	10.5 #	0.0	722.7
				Barite	Set	At	718.7

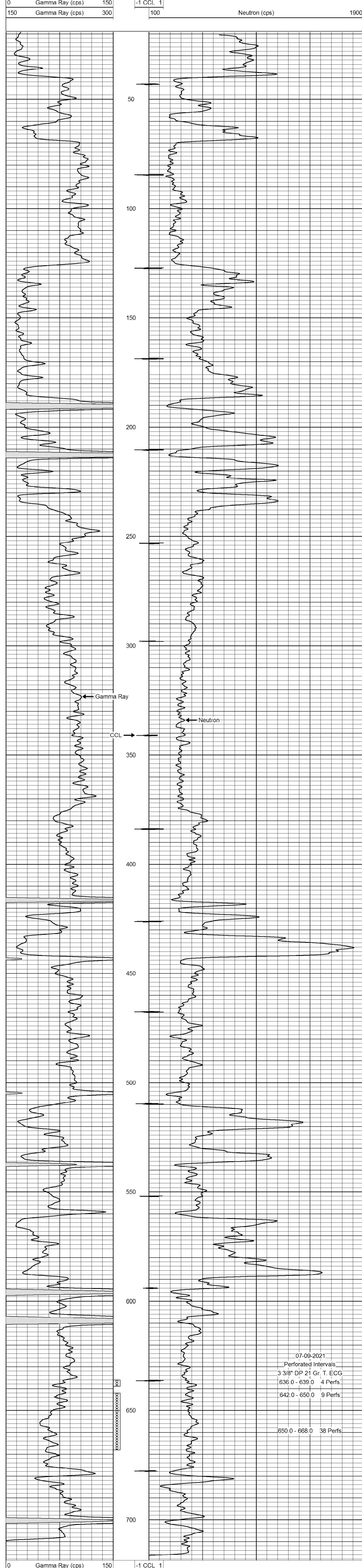
<<< Fold Here >>>

All interpretations are opinions based on inferences from electrical or other measurements and we cannot and do not guarantee the accuracy or correctness of any interpretation, and we shall not, except in the case of gross or willful negligence on our part, be liable or responsible for any loss, costs, damages, or expenses incurred or sustained by anyone resulting from any interpretation made by any of our officers, agents or employees. These interpretations are also subject to our general terms and conditions set out in our current Price Schedule.

Comments

Drilling Contractor :
 Colt Energy, Inc.

Database File: conley 27.db
 Dataset Pathname: pass1
 Presentation Format: gr-n-ccl
 Dataset Creation: Tue Jul 06 11:57:56 2021 by Log SCH 111116
 Charted by: Depth in Feet scaled 1:240



07-09-2021
 Perforated Intervals
 3 3/8" DP 21 Gr. T. ECG
 636.0 - 639.0 4 Perfs
 642.0 - 650.0 9 Perfs
 650.0 - 668.0 38 Perfs

0 Gamma Ray (cps) 150
 150 Gamma Ray (cps) 300
 -1 CCL 1
 100 Neutron (cps) 1900