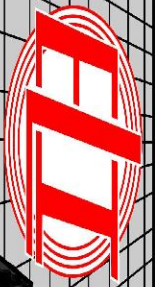


MICRO LOG



Company DARRAH OIL COMPANY, LLC.  
 Well BURDITT #1-17  
 Field PAWNEE BEND  
 County NESS State KANSAS

Location: API #: 15-135-26099-0000  
 477' FSL & 2241' FEL  
 SEC 17 TWP 20S RGE 23W  
 Permanent Datum GROUND LEVEL Elevation 2263  
 Log Measured From KELLY BUSHING 7' A.G.L.  
 Drilling Measured From KELLY BUSHING  
 Other Services CDL/CNL/PE DIL/SON  
 Elevation K.B. 2270 D.F. 2268 G.L. 2263

Date	4/22/21
Run Number	TWO
Depth Driller	4440
Depth Logger	4442
Bottom Logged Interval	4424
Top Log Interval	3500
Casing Driller	8 5/8" @ 290
Casing Logger	290
Bit Size	7 7/8
Type Fluid in Hole	CHEMICAL MUD
Density / Viscosity	9.3/57
pH / Fluid Loss	10.0/8.0
Source of Sample	FLOWLINE
Rm @ Meas. Temp	.80 @ 70F
Rmf @ Meas. Temp	.60 @ 70F
Rmc @ Meas. Temp	.96 @ 70F
Source of Rmf / Rmc	MEASUREMENT
Rm @ BHT	.46 @ 120F
Time Circulation Stopped	2 HOURS
Time Logger on Bottom	////
Maximum Recorded Temperature	120F
Equipment Number	3802
Location	HAYS, KANSAS
Recorded By	JASON CAPPELLUCCI
Witnessed By	AARON YOUNG

<<< Fold Here >>>

All interpretations are opinions based on inferences from electrical or other measurements and we cannot and do not guarantee the accuracy or correctness of any interpretation, and we shall not, except in the case of gross or willful negligence on our part, be liable or responsible for any loss, costs, damages, or expenses incurred or sustained by anyone resulting from any interpretation made by any of our officers, agents or employees. These interpretations are also subject to our general terms and conditions set out in our current Price Schedule.

Comments

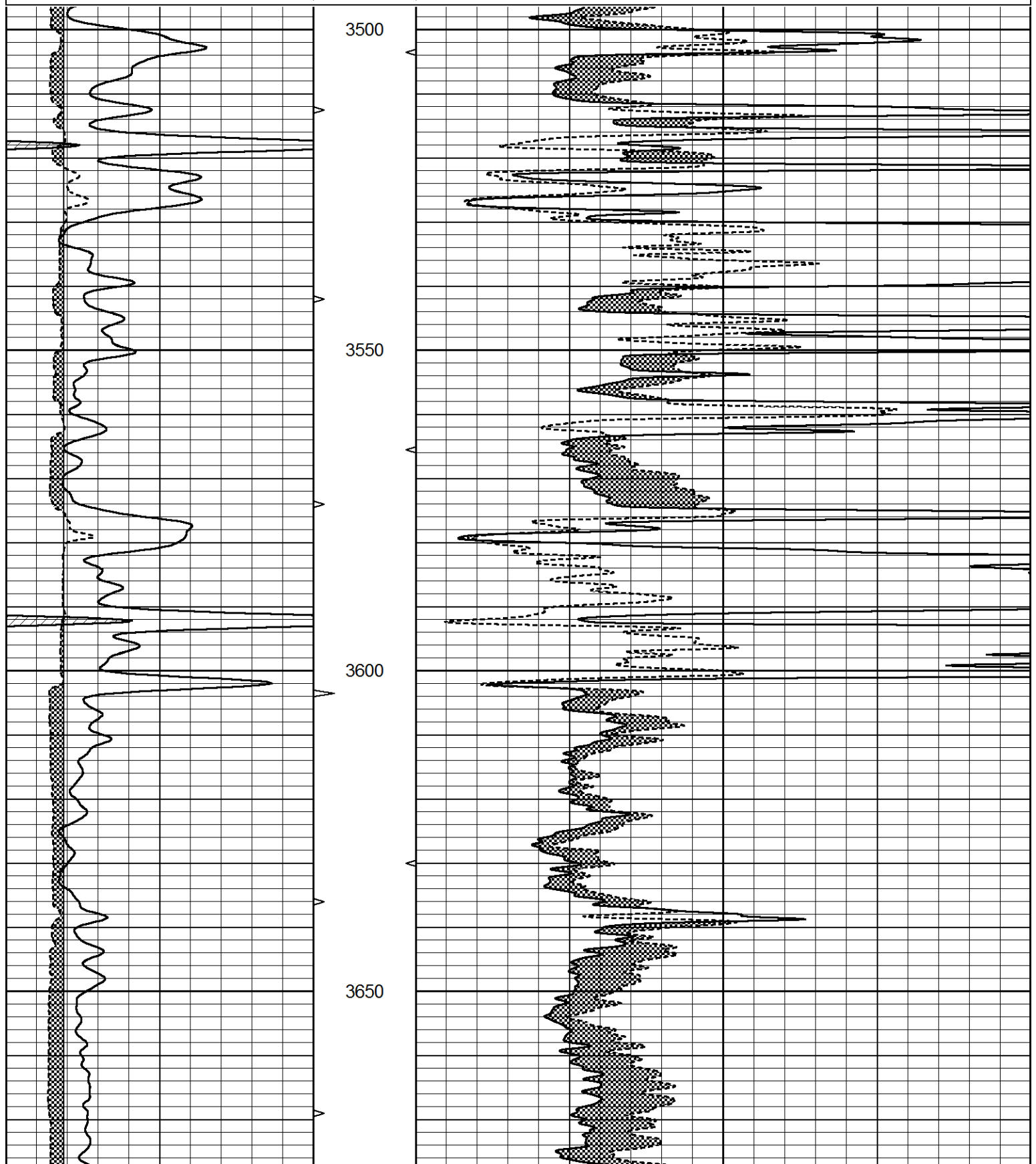
THANK YOU FOR USING ELI WIRELINE SERVICES, HAYS, KS. ( 785 ) 628-6395  
 DIRECTIONS  
 NESS CITY, KS. - 9 SOUTH TO RD. 40 - 1 EAST - 1/2 SOUTH - WEST & SOUTH INTO



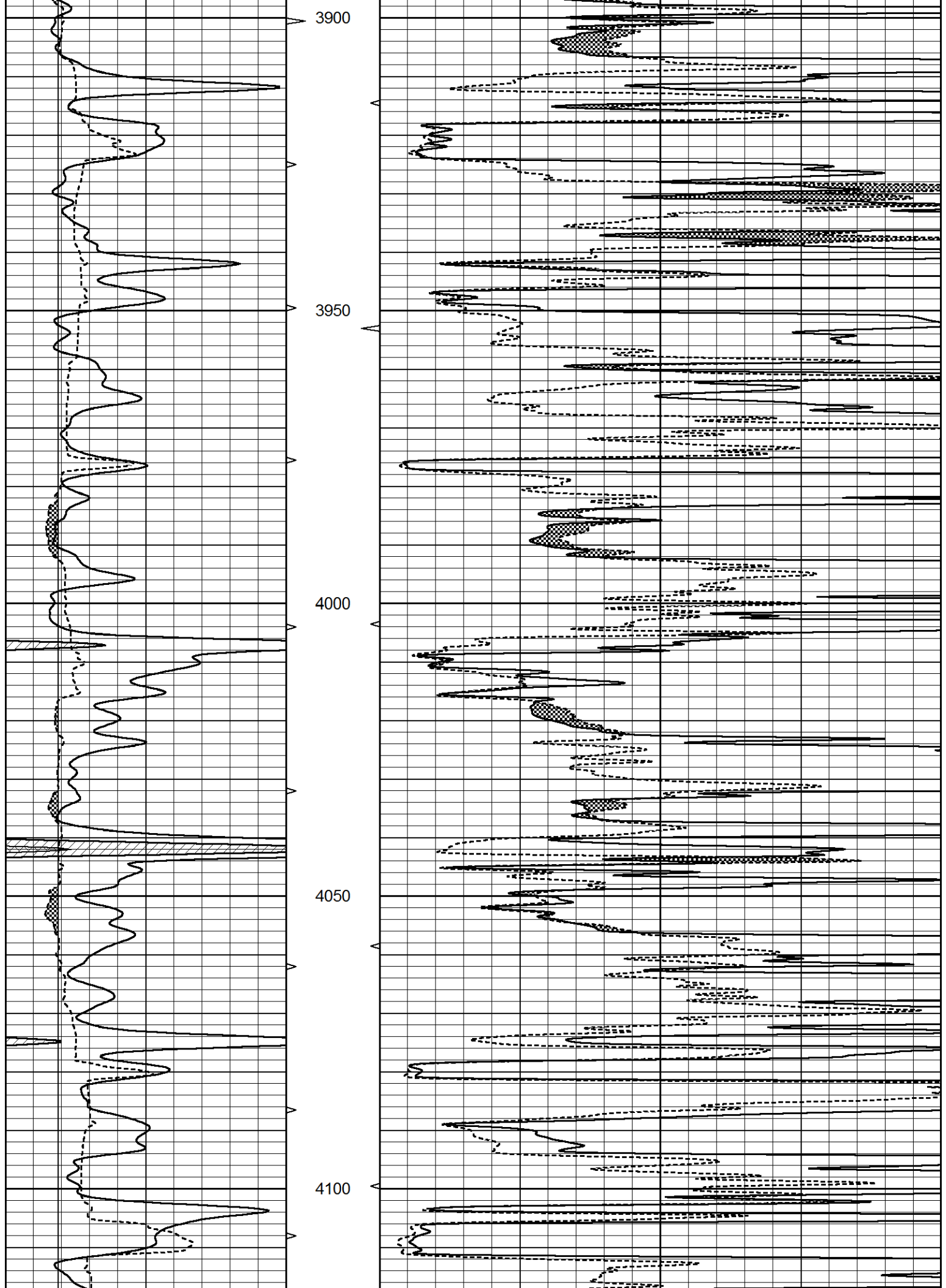
MAIN SECTION

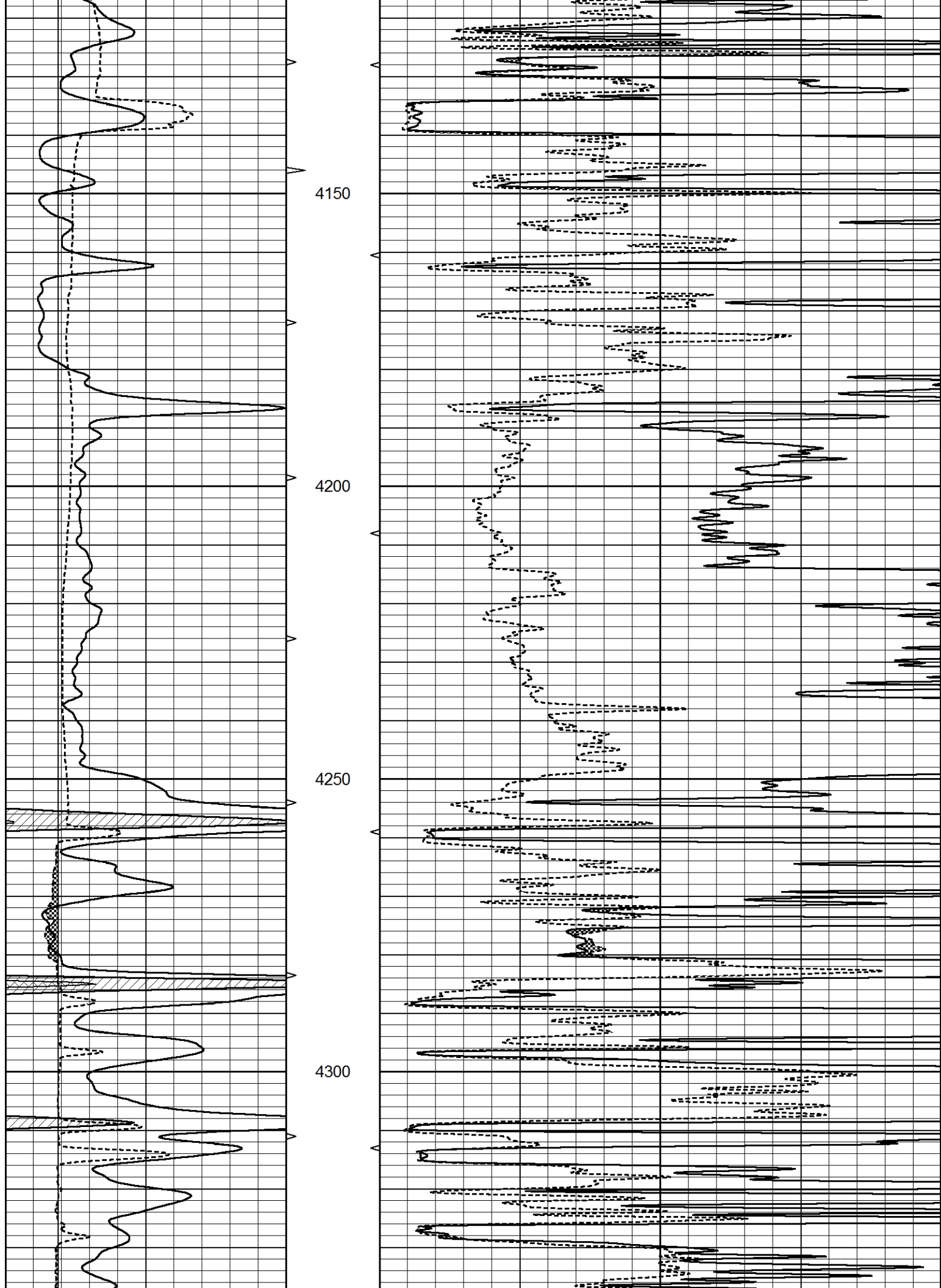
Database File 5215pe.db  
 Dataset Pathname pass6.1  
 Presentation Format \_micro  
 Dataset Creation Thu Apr 22 13:13:18 2021  
 Charted by Depth in Feet scaled 1:240

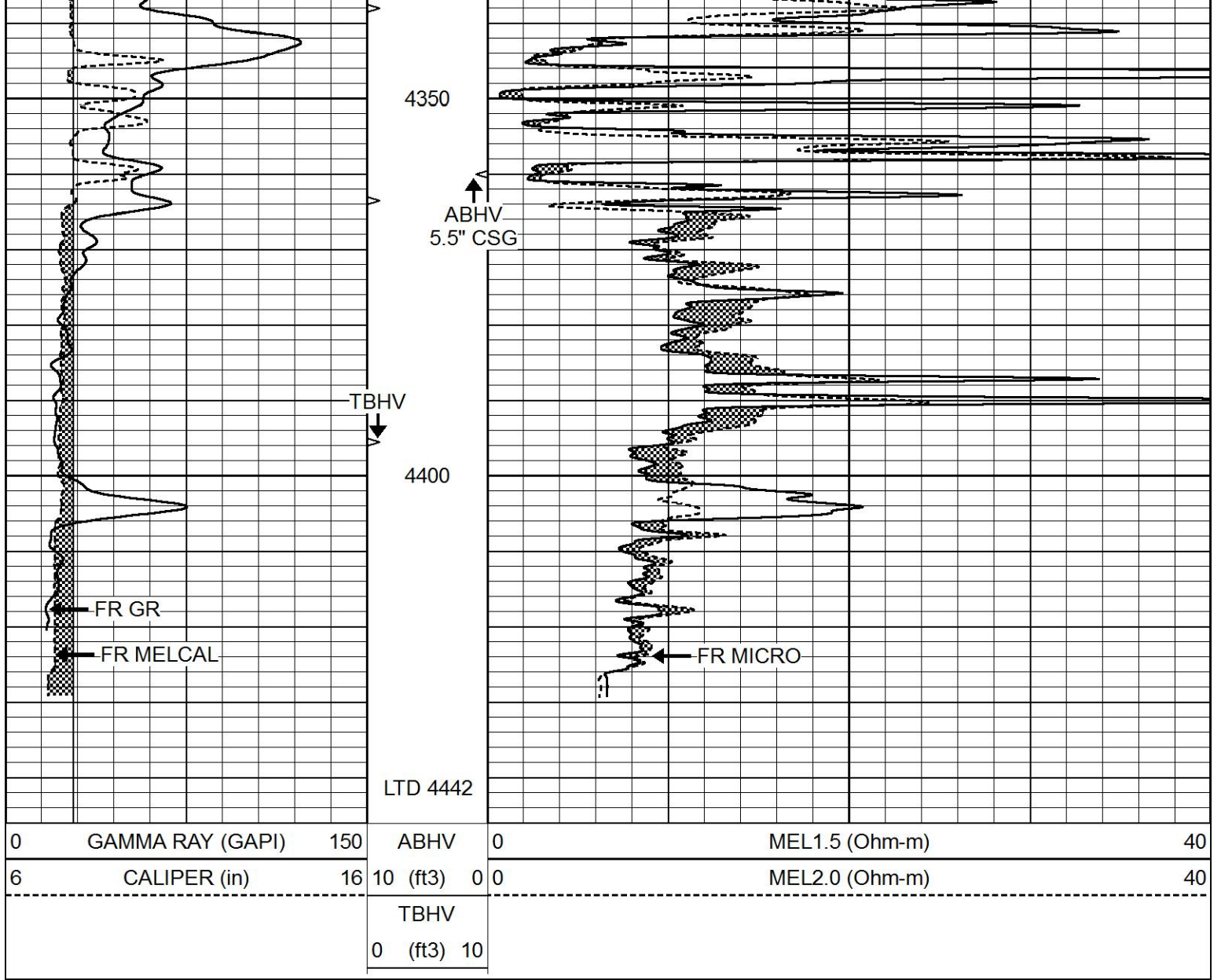
0	GAMMA RAY (GAPI)	150	ABHV	0	MEL1.5 (Ohm-m)	40
6	CALIPER (in)	16	10 (ft3)	0	MEL2.0 (Ohm-m)	40
			TBHV			
			0 (ft3)	10		







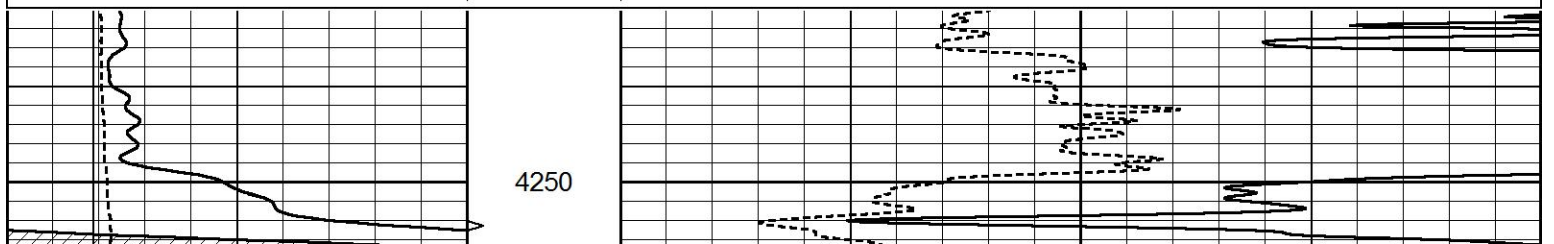


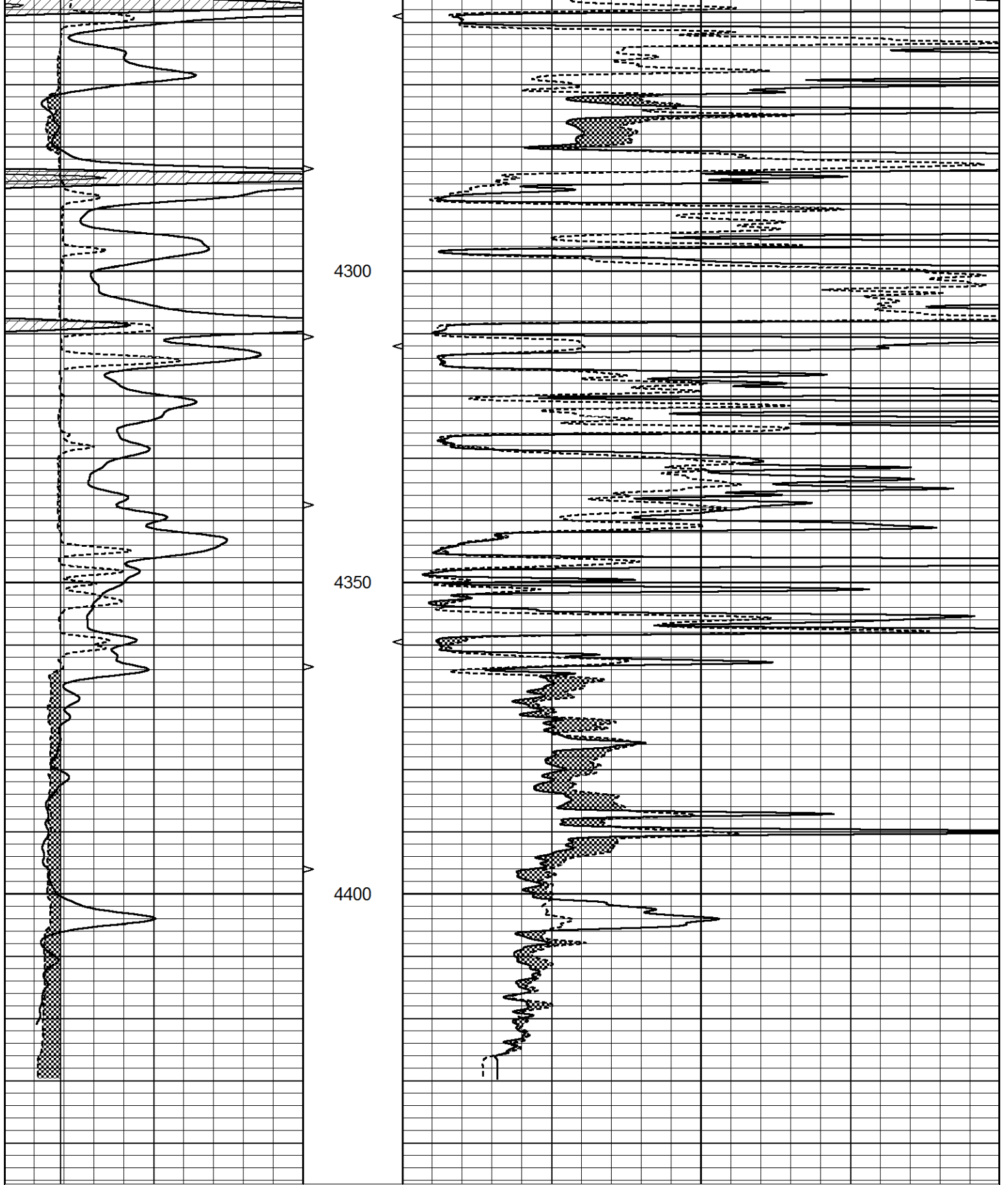


# REPEAT SECTION

Database File 5215pe.db  
 Dataset Pathname pass5.1  
 Presentation Format \_micro  
 Dataset Creation Thu Apr 22 13:11:46 2021  
 Charted by Depth in Feet scaled 1:240

0	GAMMA RAY (GAPI)	150	ABHV	0	MEL1.5 (Ohm-m)	40
6	CALIPER (in)	16	10 (ft3)	0 0	MEL2.0 (Ohm-m)	40
			TBHV			
			0 (ft3)	10		





0	GAMMA RAY (GAPI)	150	ABHV	0	MEL1.5 (Ohm-m)	40
6	CALIPER (in)	16	10 (ft3)	0 0	MEL2.0 (Ohm-m)	40
			TBHV			
			0 (ft3)	10		

Database File 5215pe.db  
 Dataset Pathname pass6.1  
 Dataset Creation Thu Apr 22 13:13:18 2021

MICRO\_USR Calibration Report

Serial Number: 070910  
 Tool Model: ProbeL  
 Performed: Thu Apr 01 18:44:00 2021

Caliper Calibration: Gain=7.389 Offset=3.045  
 References Low Cal High Cal  
 8.000 14.000  
 Readings 0.671 1.483

1.5" Calibration: Gain=50.000 Offset=-0.567  
 References Low Cal High Cal  
 0.000 20.000  
 Readings 0.004 1.335

2" Calibration: Gain=90.000 Offset=-2.000  
 References Low Cal High Cal  
 0.000 20.000  
 Readings 0.004 1.029

Microlog Calibration Report

Serial-Model: 070910-ProbeL  
 Performed: (Not Performed)

	Readings			References			Results	
	Zero	Cal		Zero	Cal		m	b
Normal	0.0000	1.0000	V	0.0000	1.0000	Ohm-m	1.0000	0.0000
Inverse	0.0000	1.0000	V	0.0000	1.0000	Ohm-m	1.0000	0.0000
Caliper	0.0000	1.0000	V	0.0000	1.0000	in	1.0000	0.0000

Gamma Ray Calibration Report

Serial Number: 070558  
 Tool Model: Probe1  
 Performed: Fri Oct 30 21:32:56 2020

Calibrator Value: 1.0 GAPI

Background Reading: 0.0 cps  
 Calibrator Reading: 1.0 cps

Sensitivity: 0.2700 GAPI/cps