

SONIC
LOG



Company DARRAH OIL COMPANY, LLC.
Well BURDITT #1-17
Field PAWNEE BEND
County NESS State KANSAS

Location: API #: 15-135-26099-0000
477' FSL & 2241' FEL
SEC 17 TWP 20S RGE 23W
Permanent Datum GROUND LEVEL Elevation 2263
Log Measured From KELLY BUSHING 7' A.G.L
Drilling Measured From KELLY BUSHING
Elevation
K.B. 2270
D.F. 2268
G.L. 2263

Date	4/22/21
Run Number	TWO
Depth Driller	4440
Depth Logger	4442
Bottom Logged Interval	4432
Top Log Interval	250
Casing Driller	8 5/8" @ 290
Casing Logger	290
Bit Size	7 7/8
Type Fluid in Hole	CHEMICAL MUD
Density / Viscosity	9.3/57
pH / Fluid Loss	10.0/8.0
Source of Sample	FLOWLINE
Rm @ Meas. Temp	.80 @ 70F
Rmf @ Meas. Temp	.60 @ 70F
Rmc @ Meas. Temp	.96 @ 70F
Source of Rmf / Rmc	MEASUREMENT
Rm @ BHT	.46 @ 120F
Time Circulation Stopped	2 HOURS
Time Logger on Bottom	////
Maximum Recorded Temperature	120F
Equipment Number	3802
Location	HAYS, KANSAS
Recorded By	JASON CAPPELLUCCI
Witnessed By	AARON YOUNG

<<< Fold Here >>>

All interpretations are opinions based on inferences from electrical or other measurements and we cannot and do not guarantee the accuracy or correctness of any interpretation, and we shall not, except in the case of gross or willful negligence on our part, be liable or responsible for any loss, costs, damages, or expenses incurred or sustained by anyone resulting from any interpretation made by any of our officers, agents or employees. These interpretations are also subject to our general terms and conditions set out in our current Price Schedule.

Comments

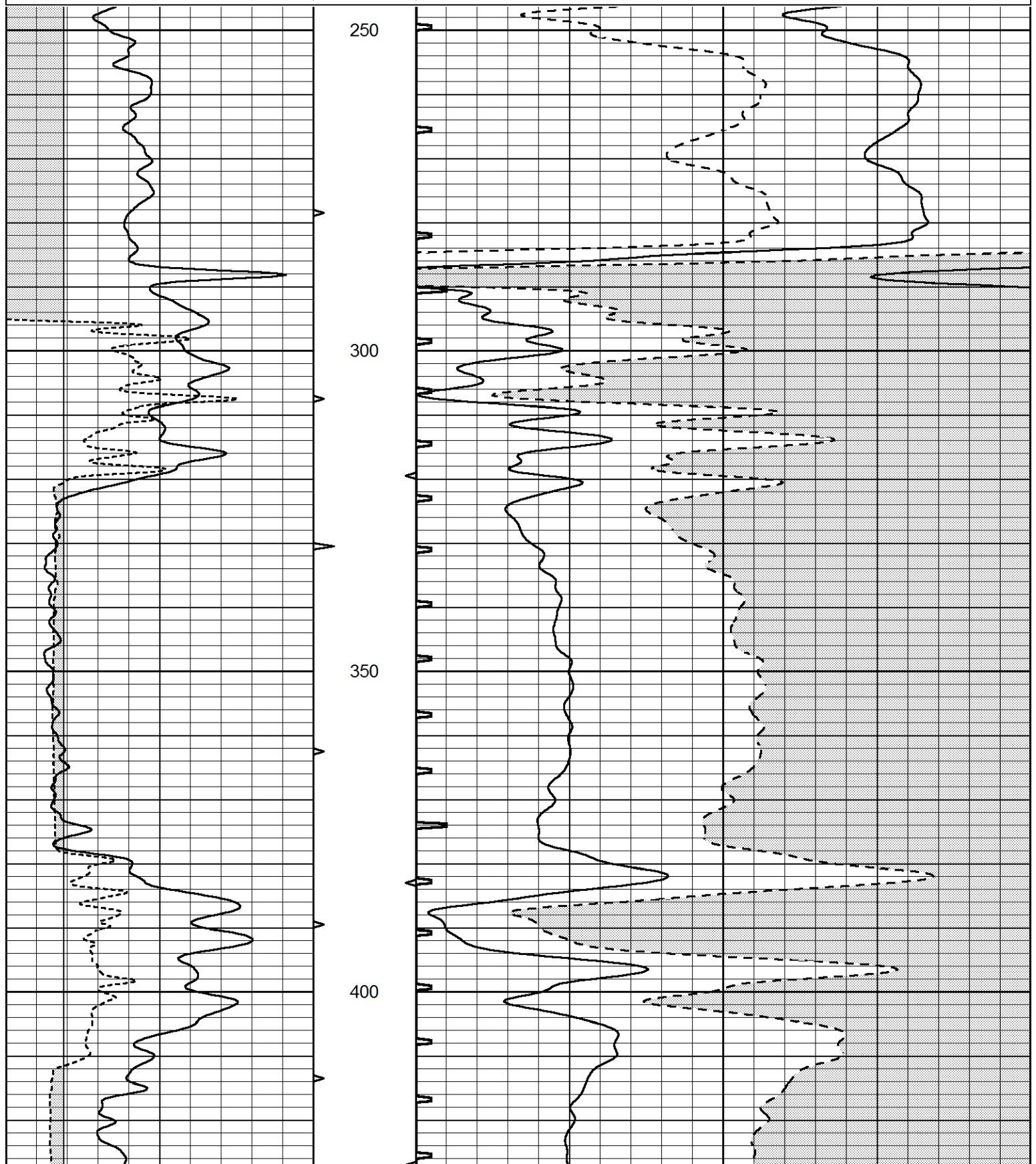
THANK YOU FOR USING ELI WIRELINE SERVICES, HAYS, KS. (785) 628-6395
DIRECTIONS
NESS CITY, KS. - 9 SOUTH TO RD. 40 - 1 EAST - 1/2 SOUTH - WEST & SOUTH INTO

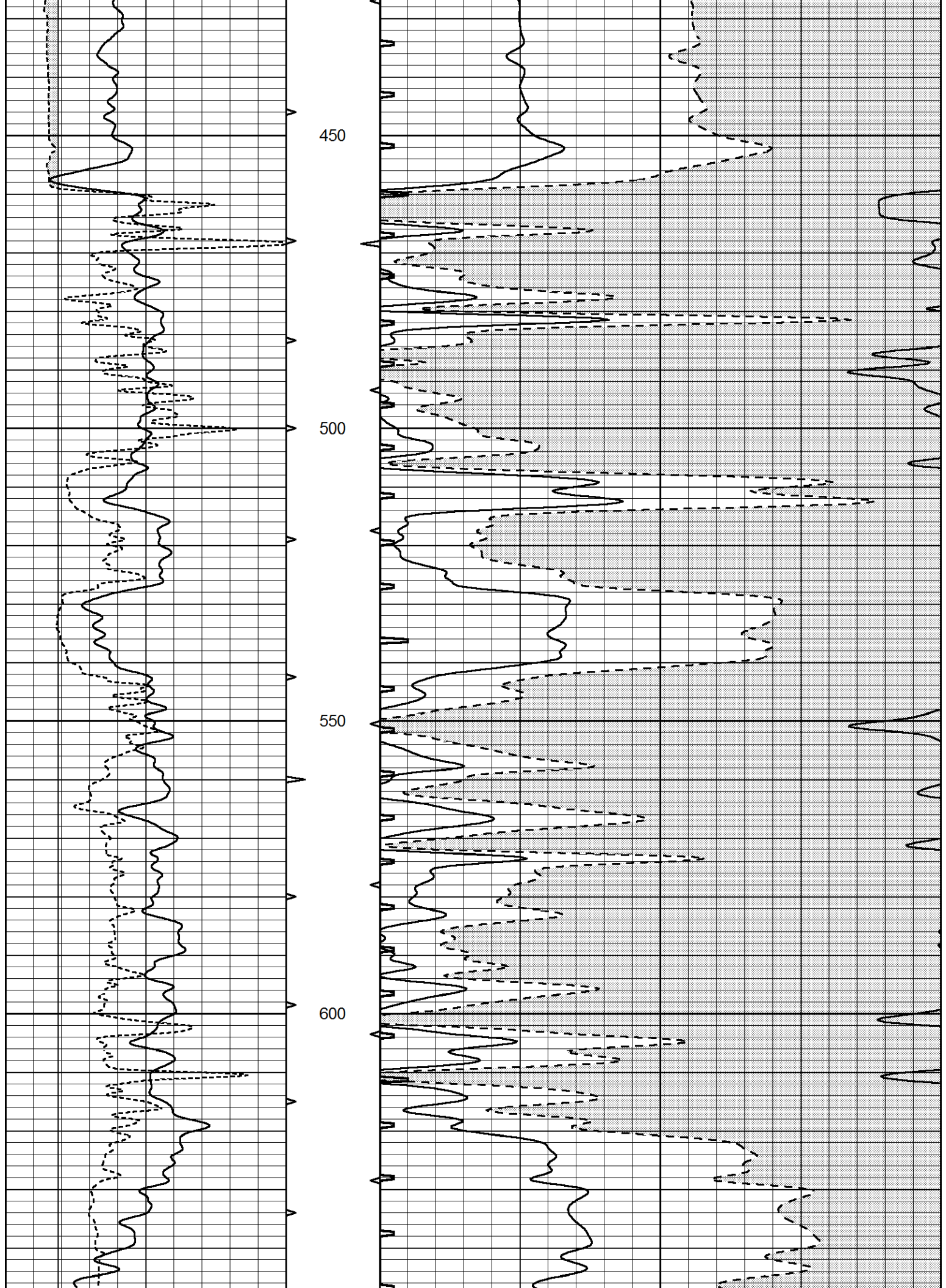


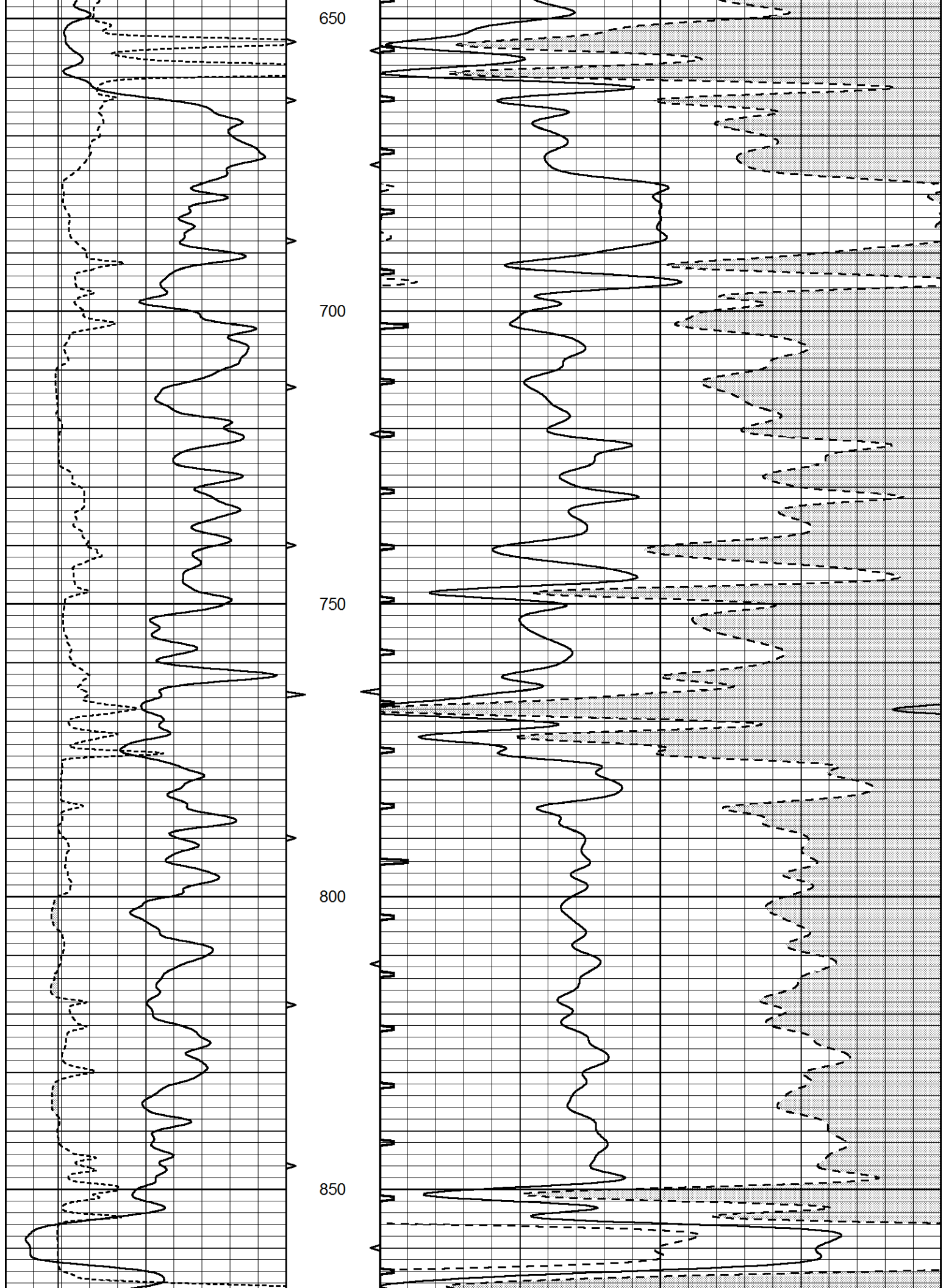
MAIN SECTION

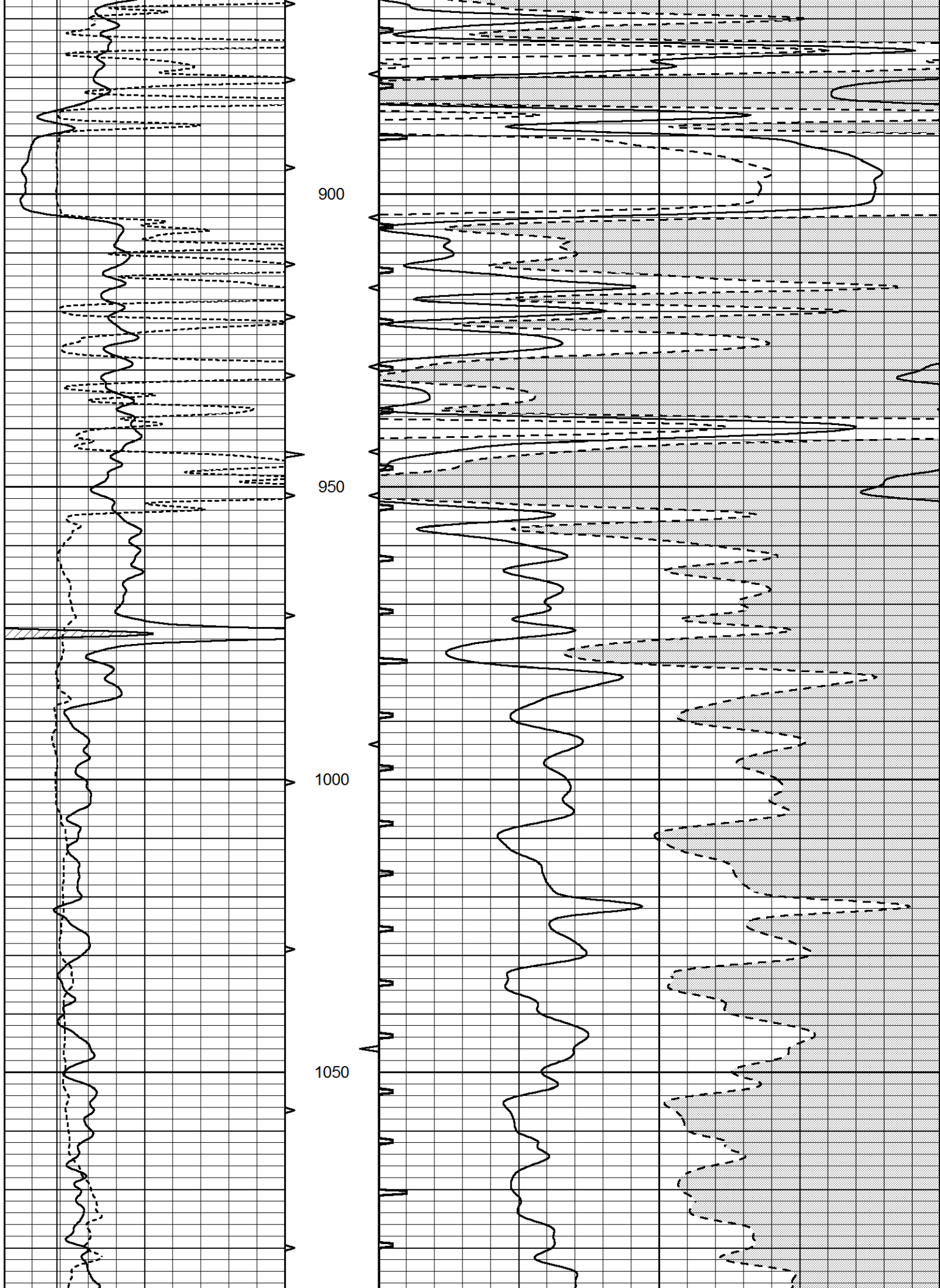
Database File 5215pe.db
 Dataset Pathname pass6
 Presentation Format _slt
 Dataset Creation Thu Apr 22 12:46:13 2021
 Charted by Depth in Feet scaled 1:240

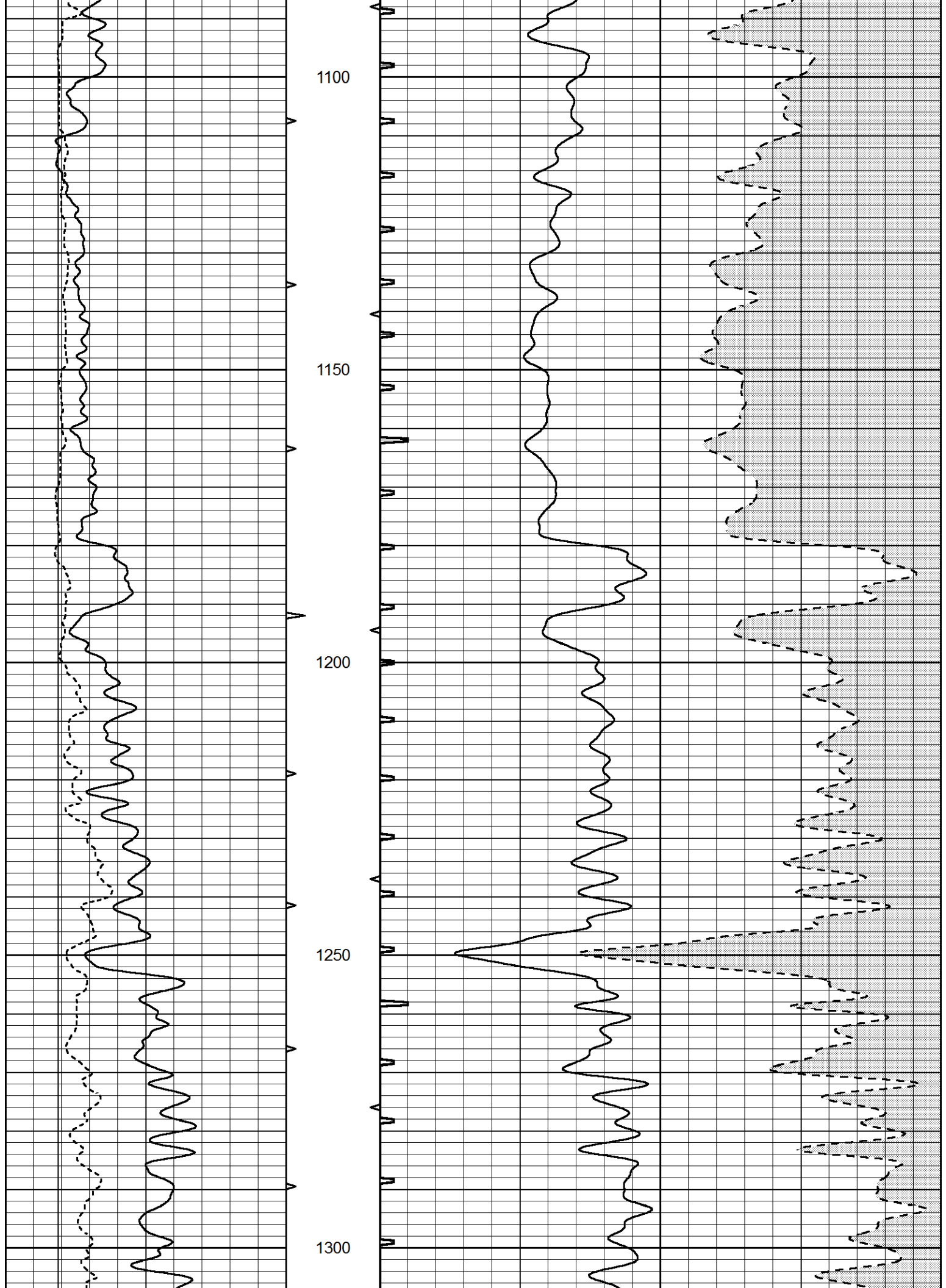
0	GAMMA RAY (GAPI)	150	ABHV	140	DELTA TIME (usec/ft)	40	
6	CALIPER (in)	16	10 (ft3)	0	30	SONIC POROSITY (pu)	-10
			TBHV	0	ITT (msec)	20	
			0 (ft3)	10			

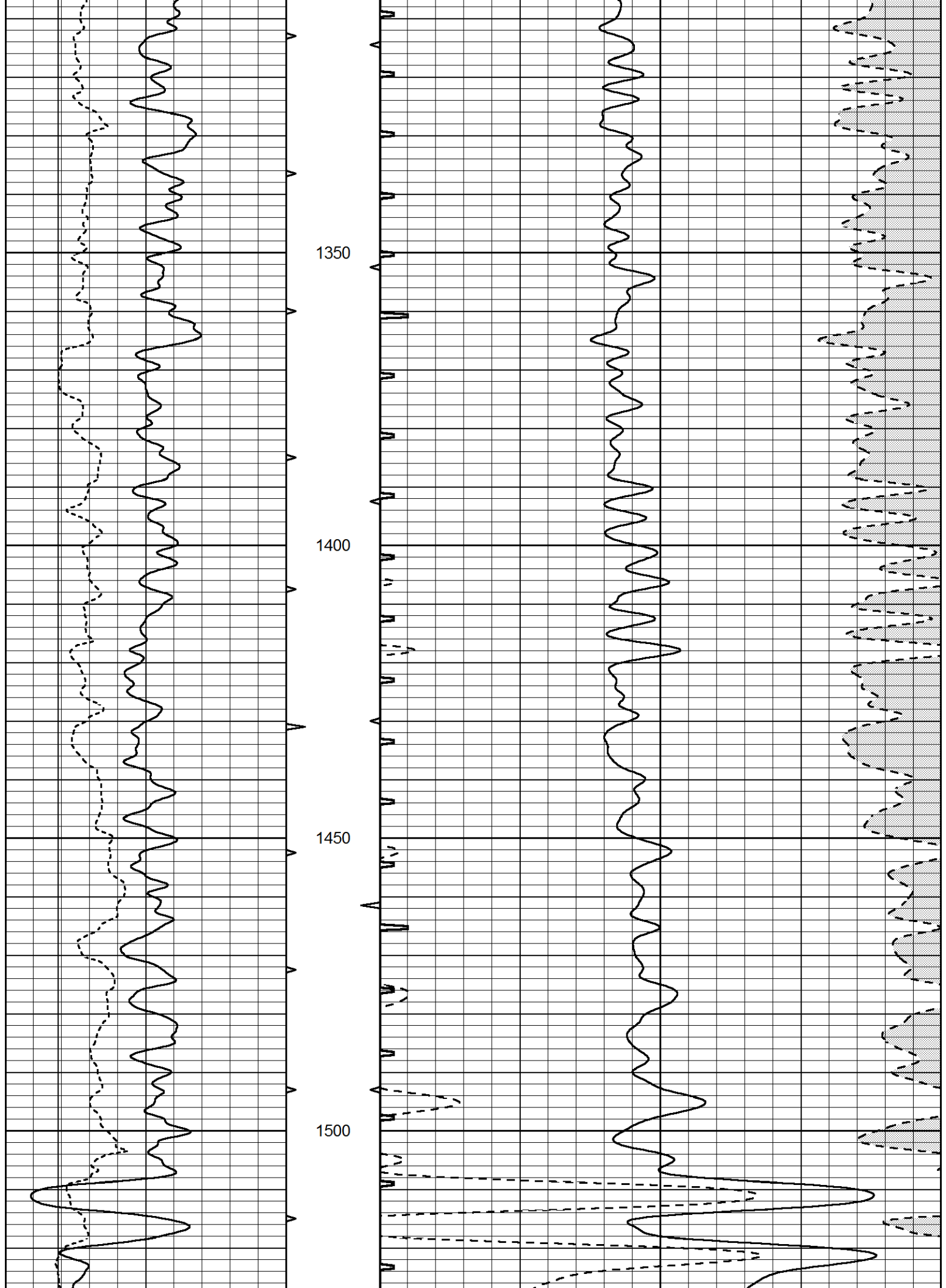


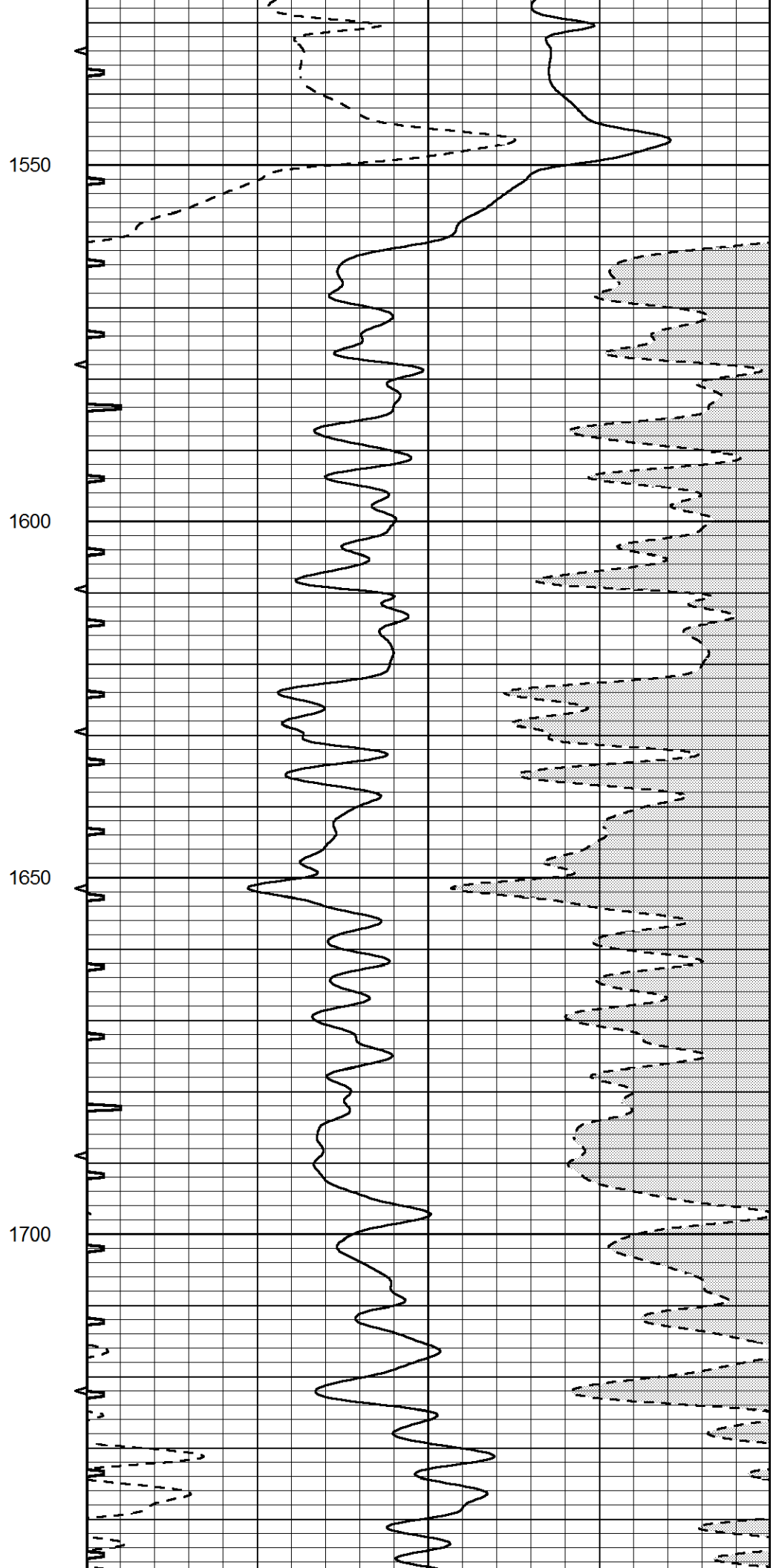
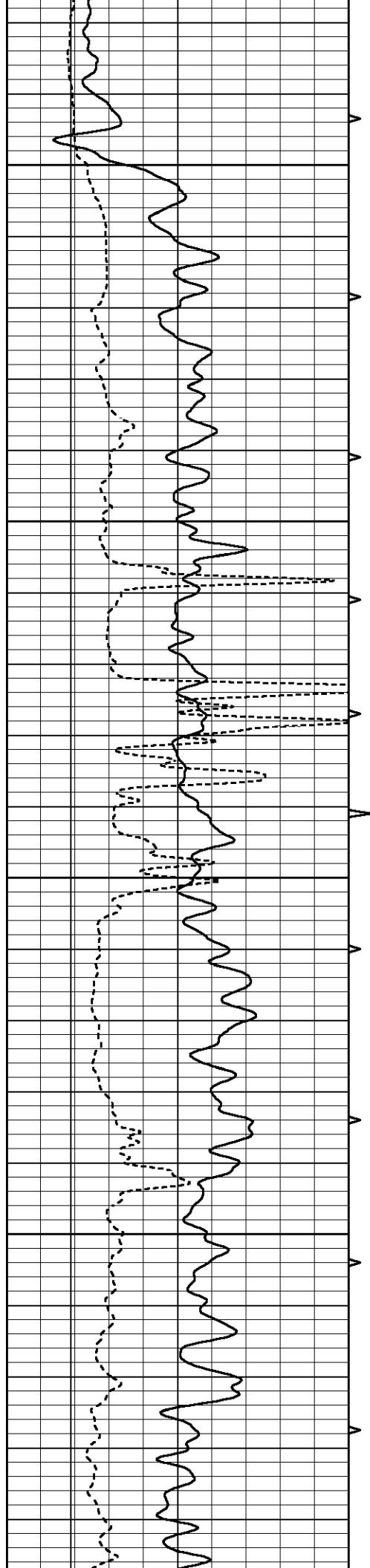


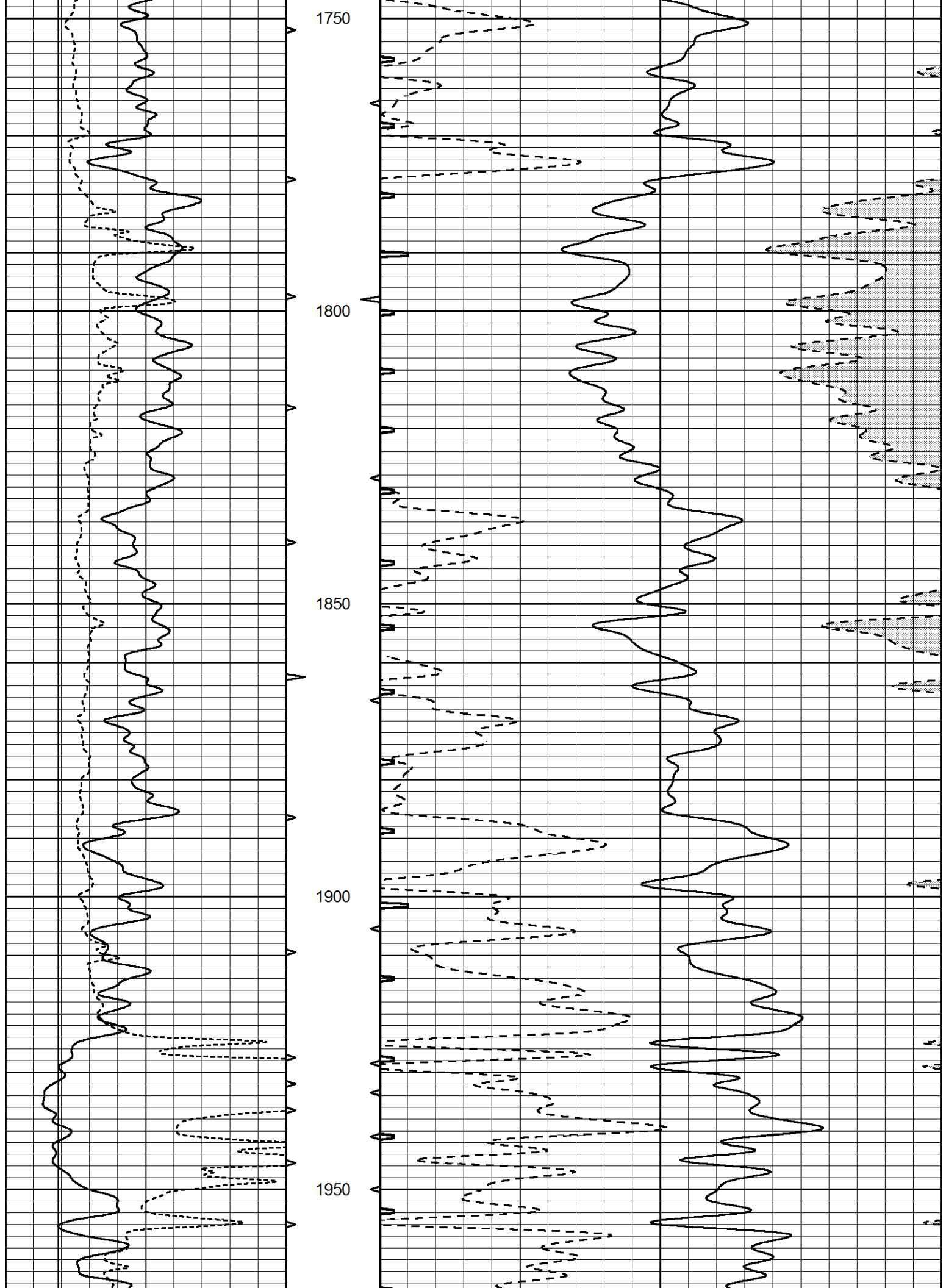


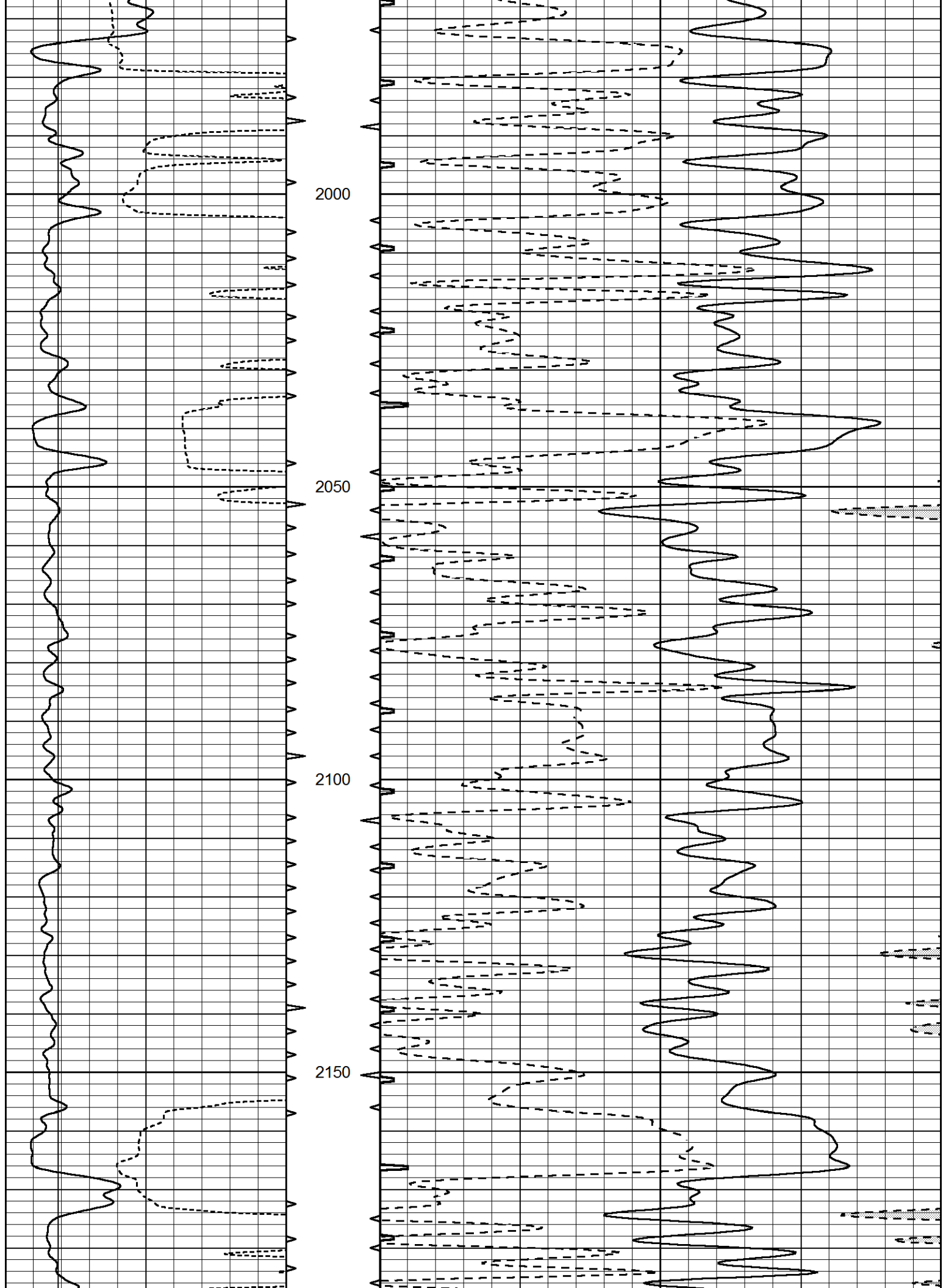


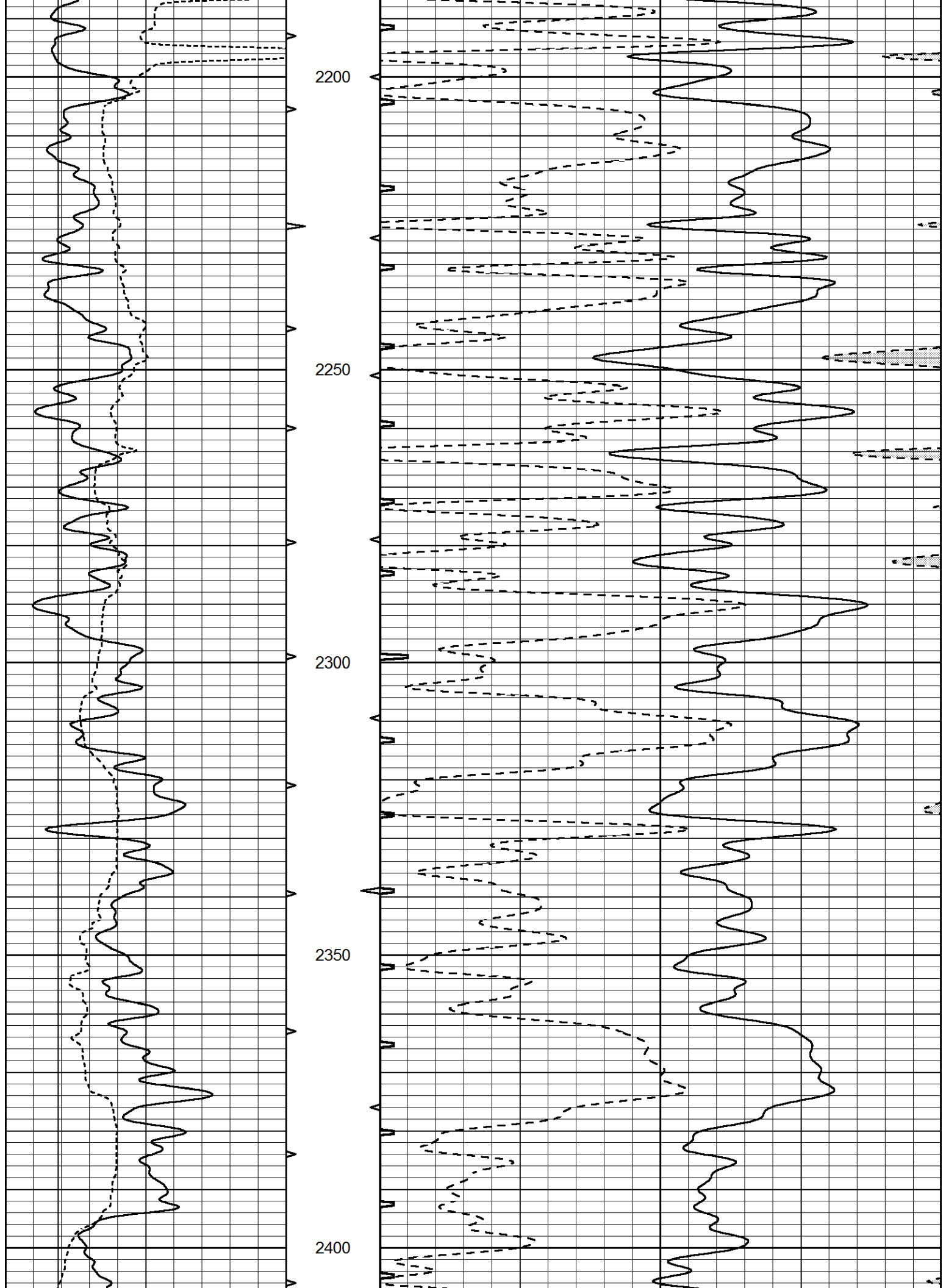


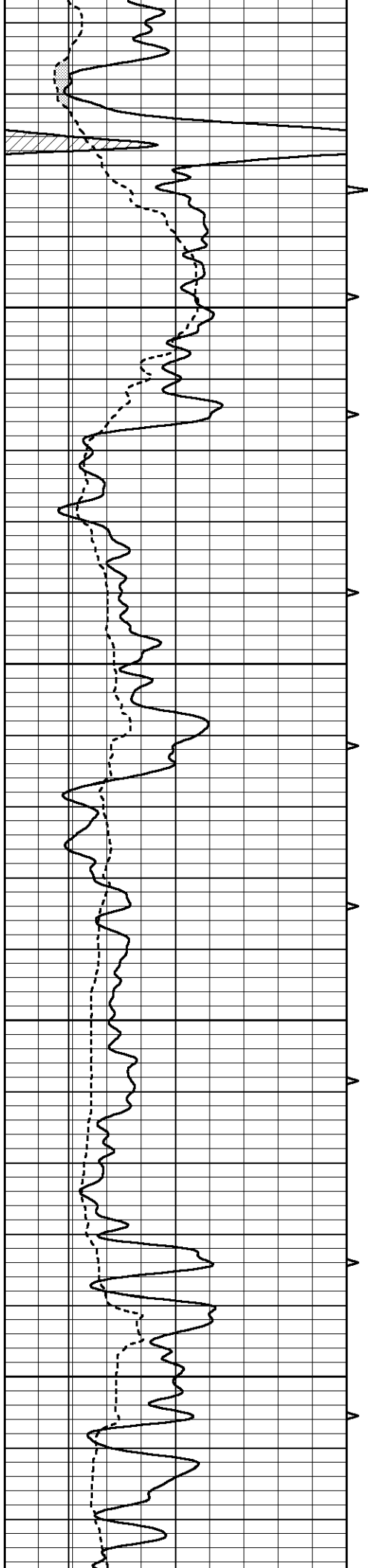










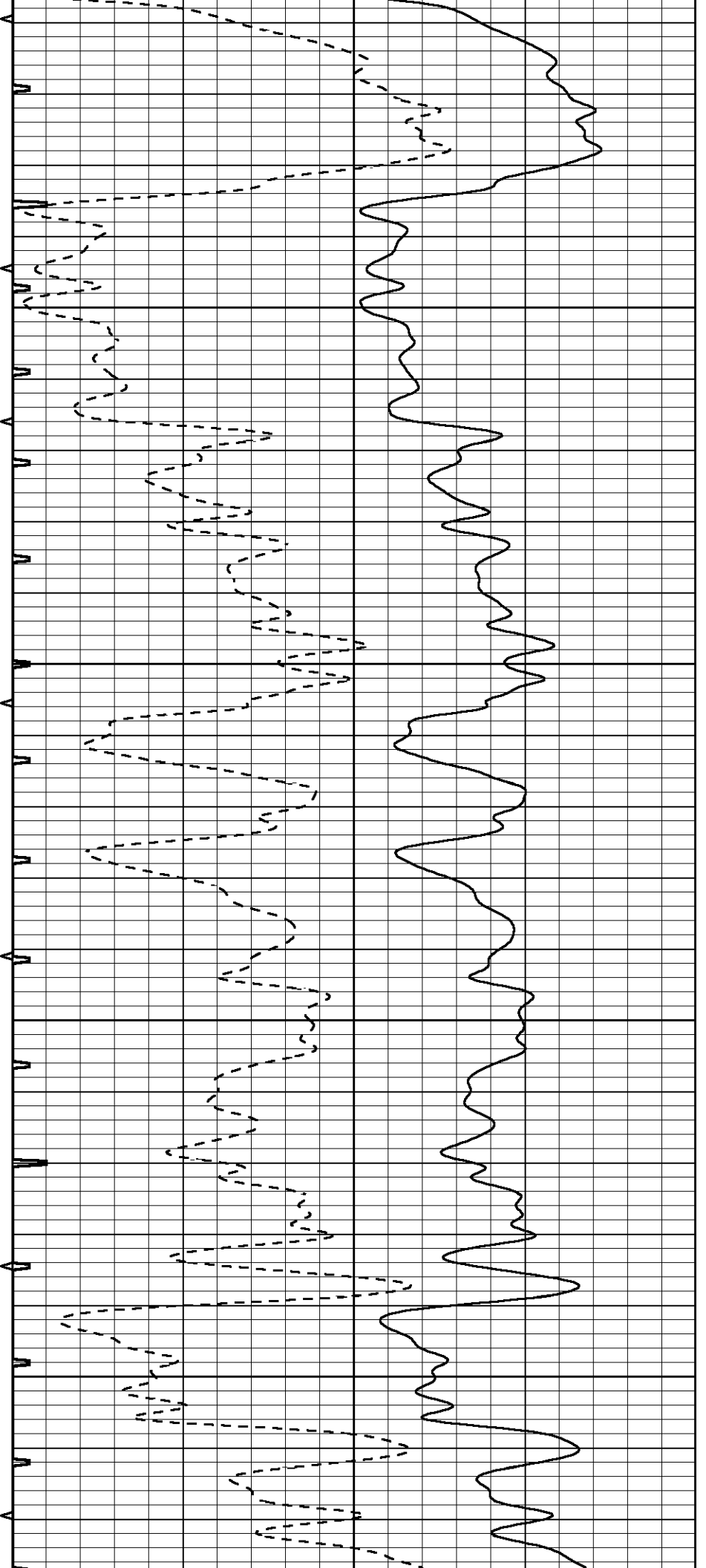


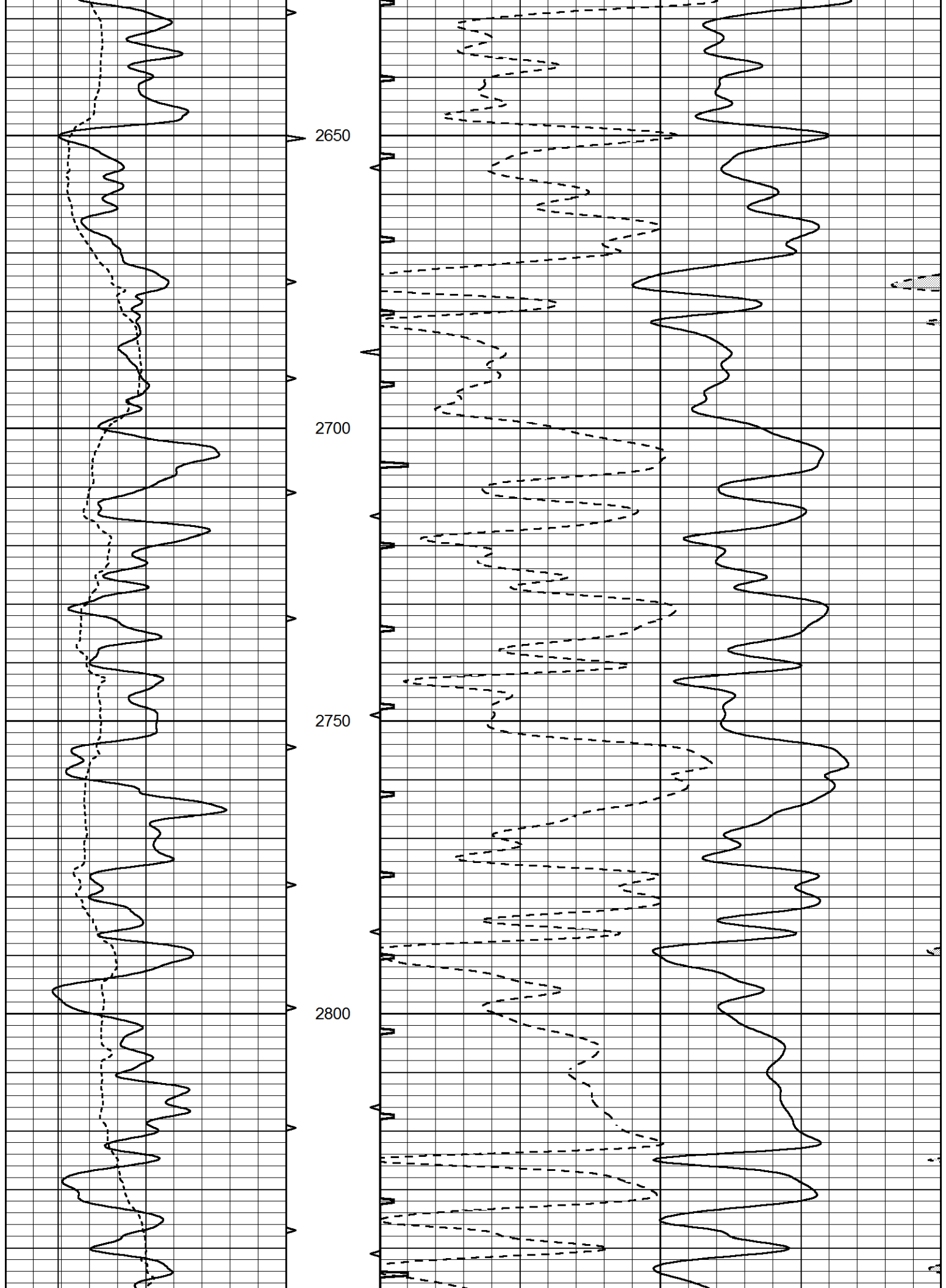
2450

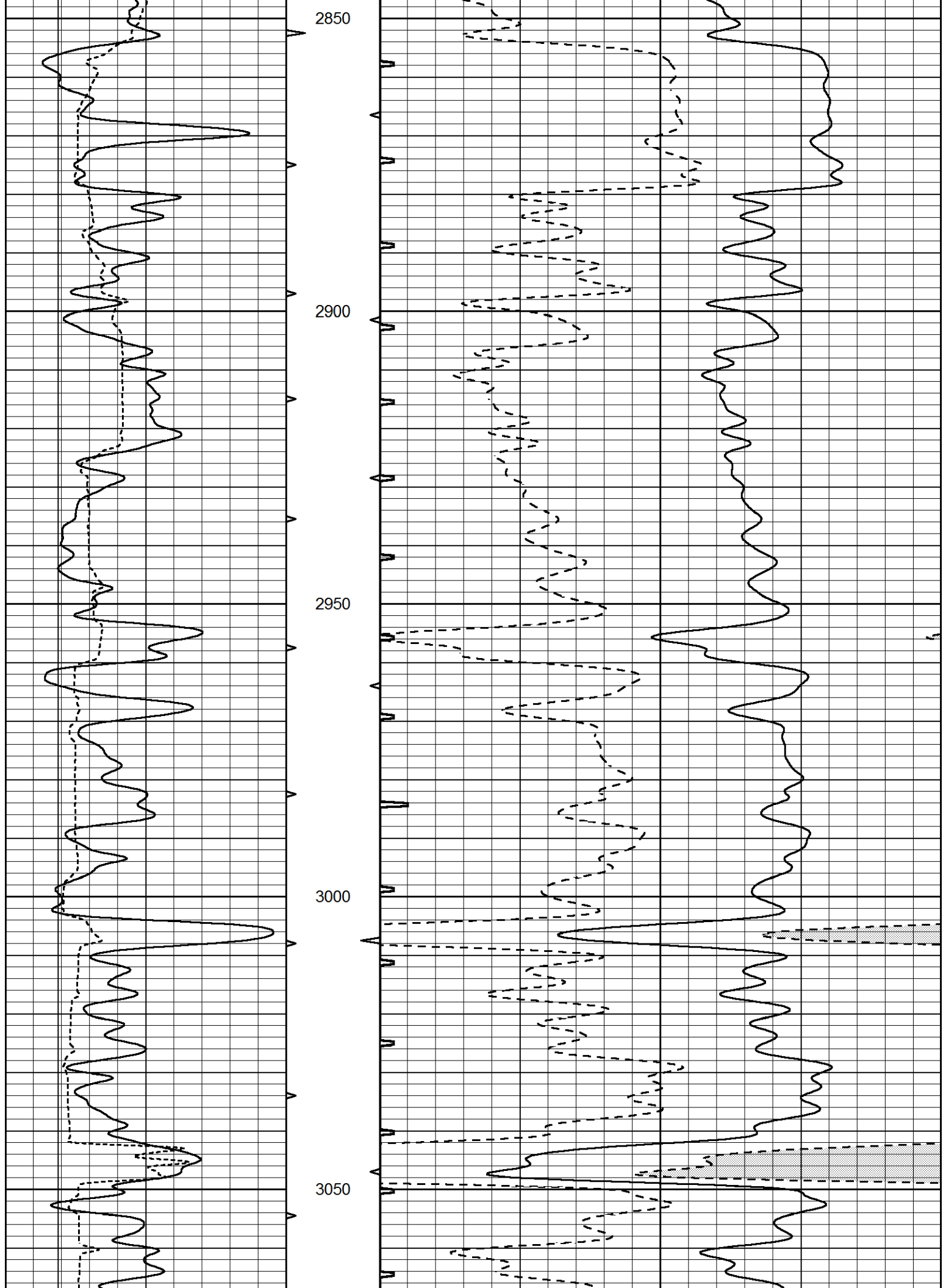
2500

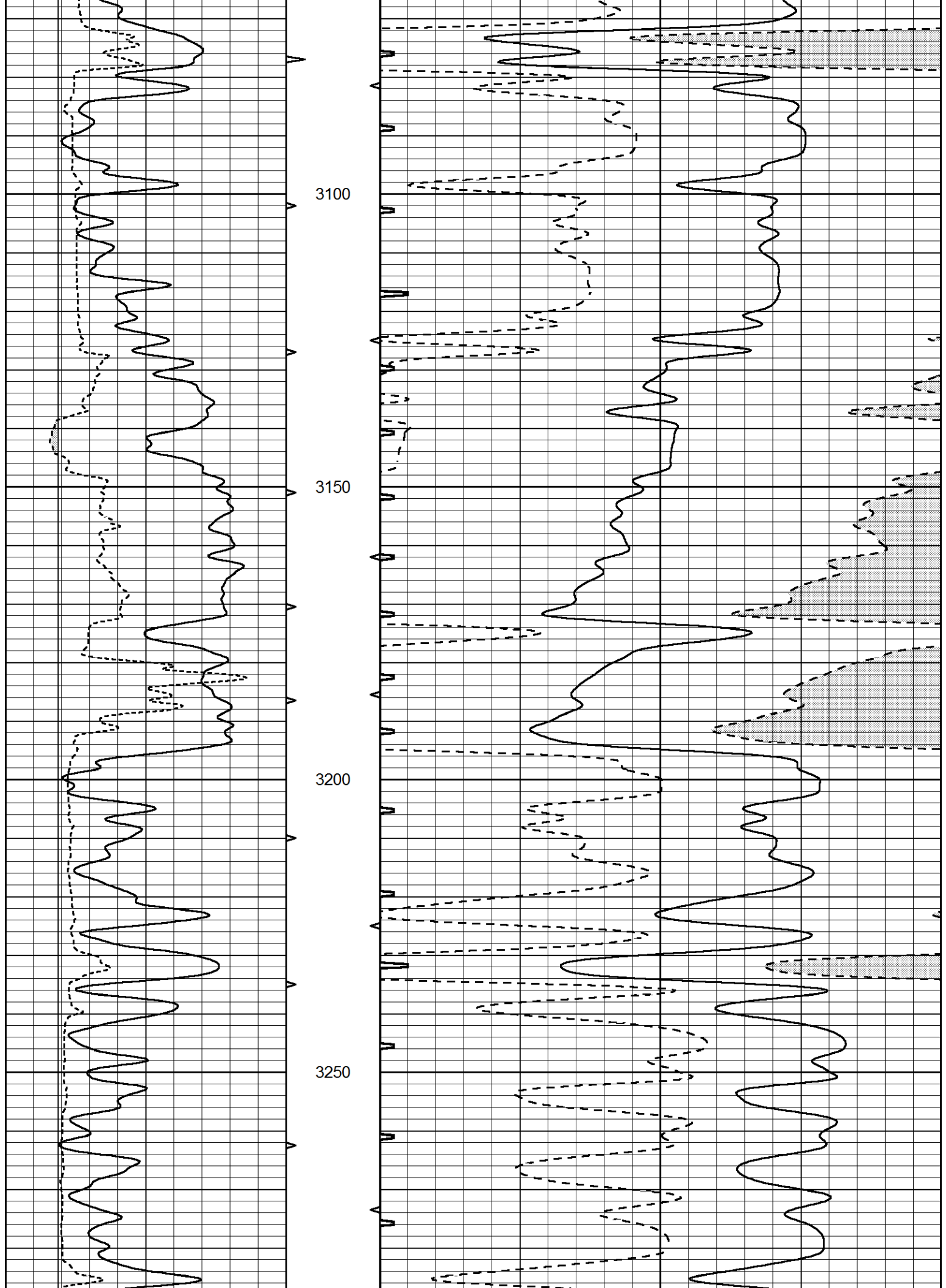
2550

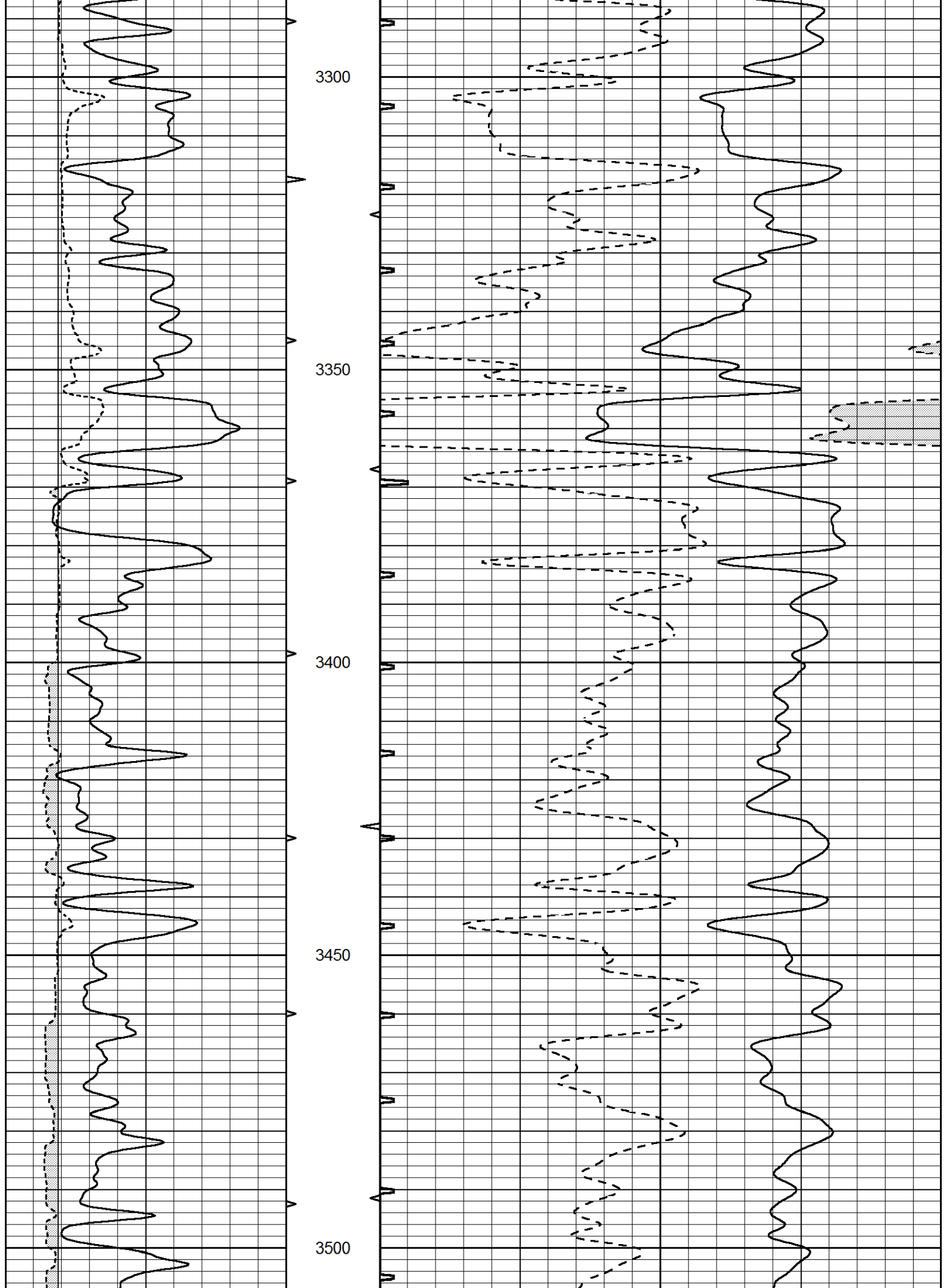
2600

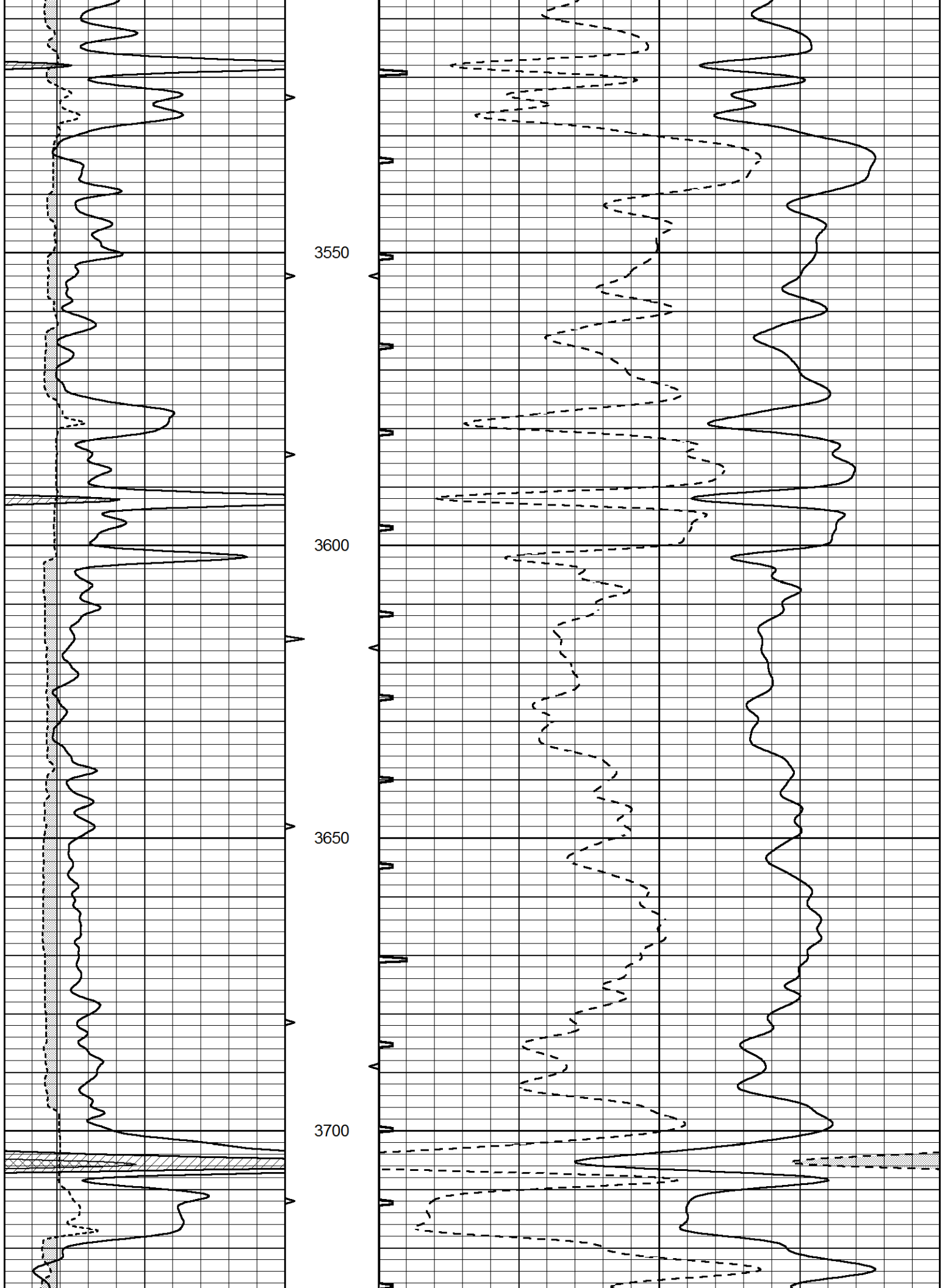


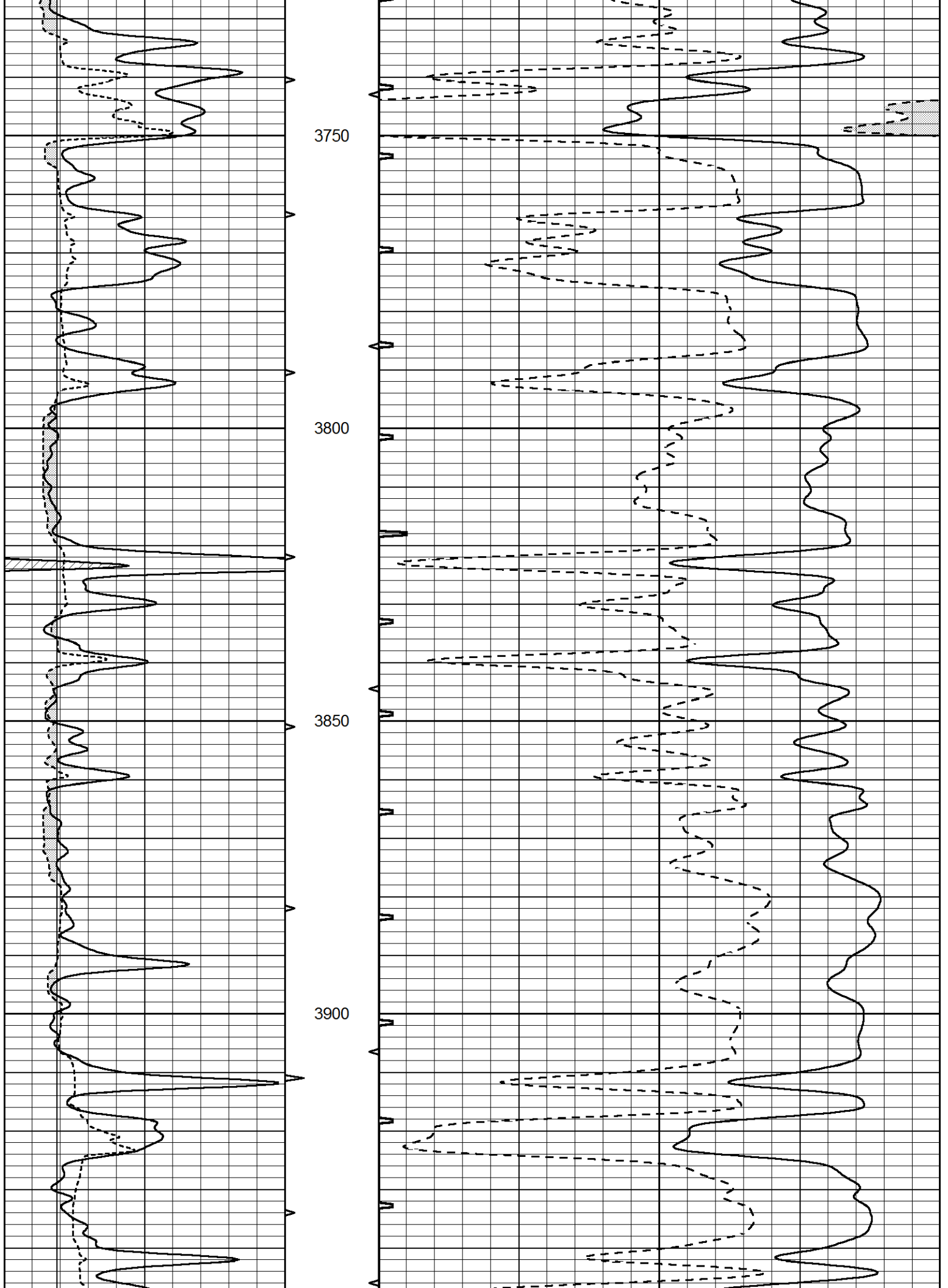


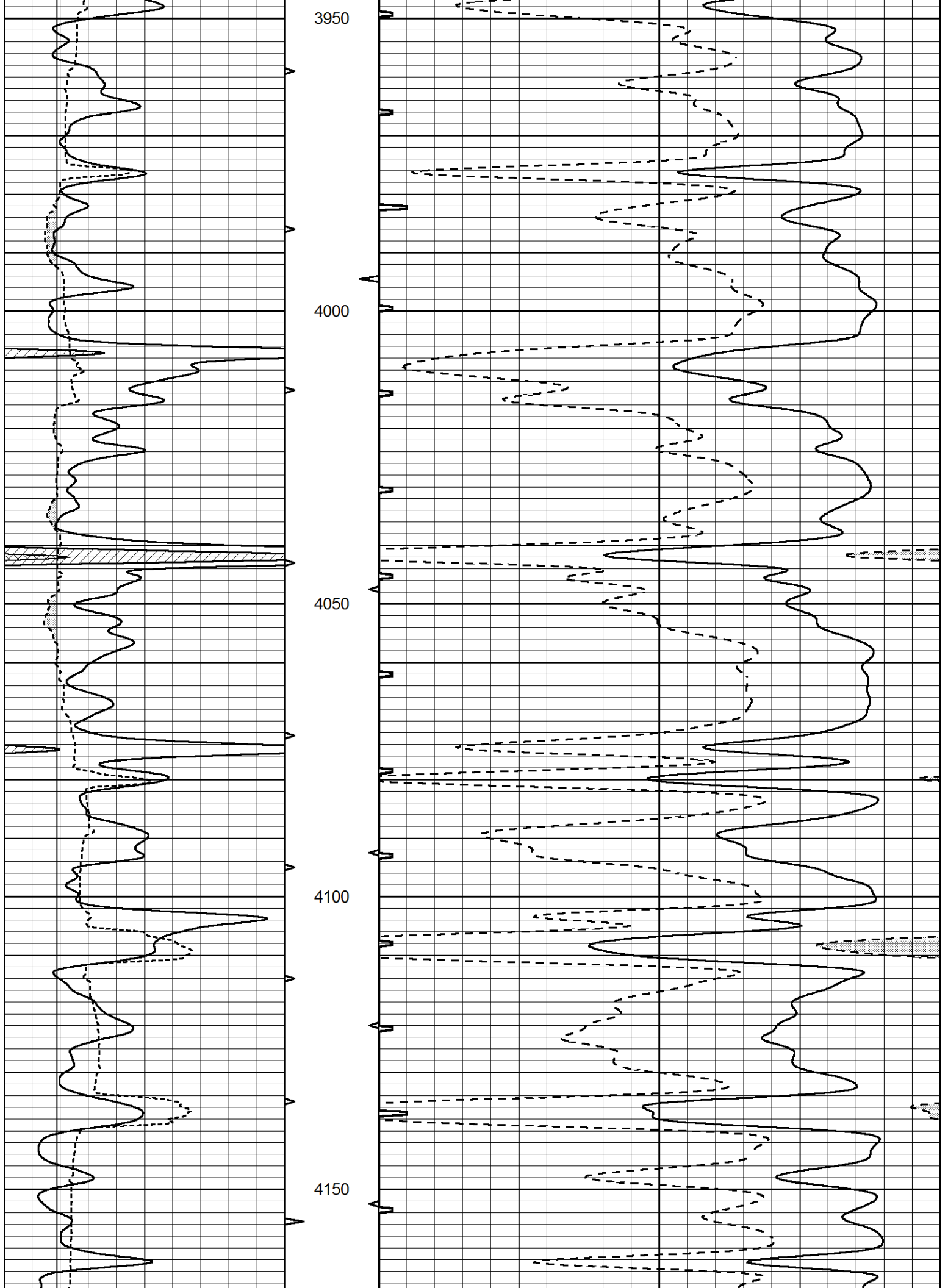


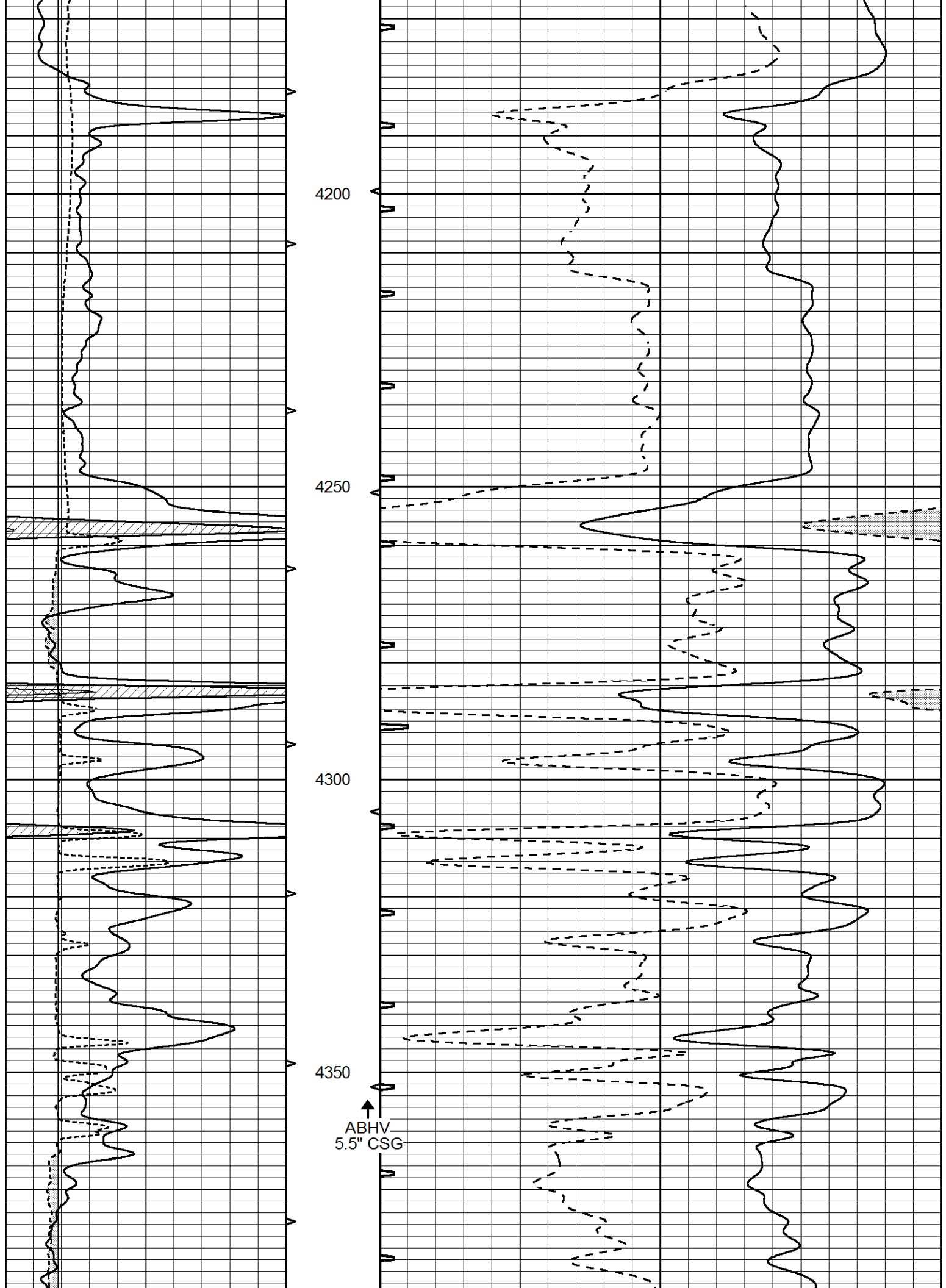












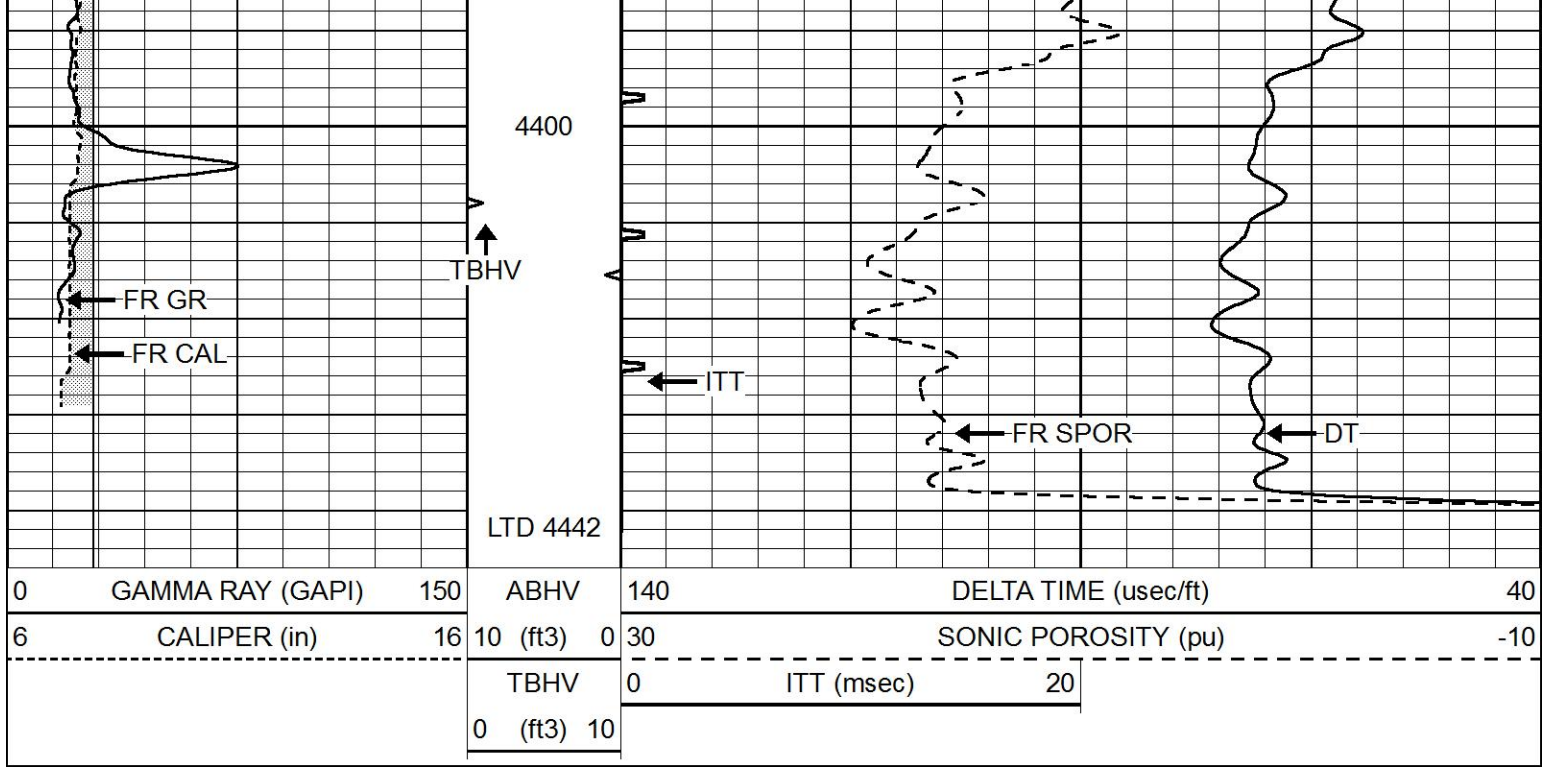
4200

4250

4300

4350

ABHV
5.5" CSG



REPEAT SECTION

Database File 5215pe.db
 Dataset Pathname pass5.1
 Presentation Format _slt
 Dataset Creation Thu Apr 22 13:11:46 2021
 Charted by Depth in Feet scaled 1:240

