



DUAL  
INDUCTION  
LOG

Company DARRAH OIL COMPANY, LLC.

Well BURDITT #1-17

Field PAWNEE BEND

County NESS State KANSAS

Location: API #: 15-135-26099-0000

477' FSL & 2241' FEL

SEC 17 TWP 20S RGE 23W

Permanent Datum GROUND LEVEL Elevation 2263

Log Measured From KELLY BUSHING 7' A.G.L

Drilling Measured From KELLY BUSHING

Other Services  
CDL/CNL/PE  
MEL/SON

Elevation

K.B. 2270  
D.F. 2268  
G.L. 2263

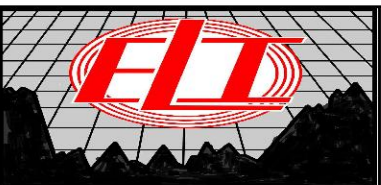
Date	4/22/21
Run Number	ONE
Depth Driller	4440
Depth Logger	4442
Bottom Logged Interval	4440
Top Log Interval	00
Casing Driller	8 5/8" @ 290
Casing Logger	290
Bit Size	7 7/8
Type Fluid in Hole	CHEMICAL MUD
Density / Viscosity	9.3/57
pH / Fluid Loss	10.0/8.0
Source of Sample	FLOWLINE
Rm @ Meas. Temp	.80 @ 70F
Rmf @ Meas. Temp	.60 @ 70F
Rmc @ Meas. Temp	.96 @ 70F
Source of Rmf / Rmc	MEASUREMENT
Rm @ BHT	.46 @ 120F
Time Circulation Stopped	2 HOURS
Time Logger on Bottom	////
Maximum Recorded Temperature	120F
Equipment Number	3802
Location	HAYS, KANSAS
Recorded By	JASON CAPPELLUCCI
Witnessed By	AARON YOUNG

<<< Fold Here >>>

All interpretations are opinions based on inferences from electrical or other measurements and we cannot and do not guarantee the accuracy or correctness of any interpretation, and we shall not, except in the case of gross or willful negligence on our part, be liable or responsible for any loss, costs, damages, or expenses incurred or sustained by anyone resulting from any interpretation made by any of our officers, agents or employees. These interpretations are also subject to our general terms and conditions set out in our current Price Schedule.

Comments

THANK YOU FOR USING ELI WIRELINE SERVICES, HAYS, KS. ( 785 ) 628-6395  
DIRECTIONS  
NESS CITY, KS. - 9 SOUTH TO RD. 40 - 1 EAST - 1/2 SOUTH - WEST & SOUTH INTO

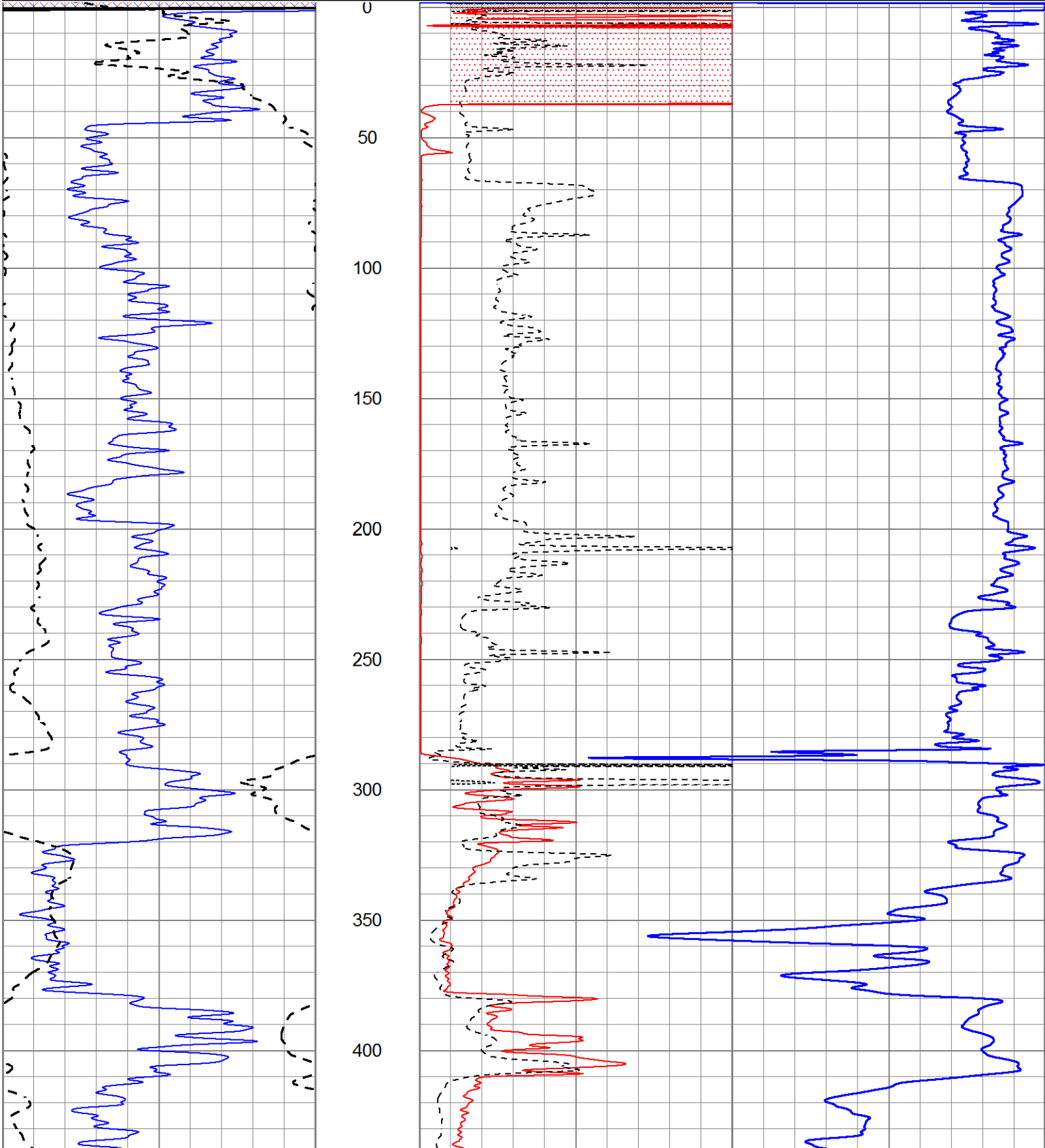


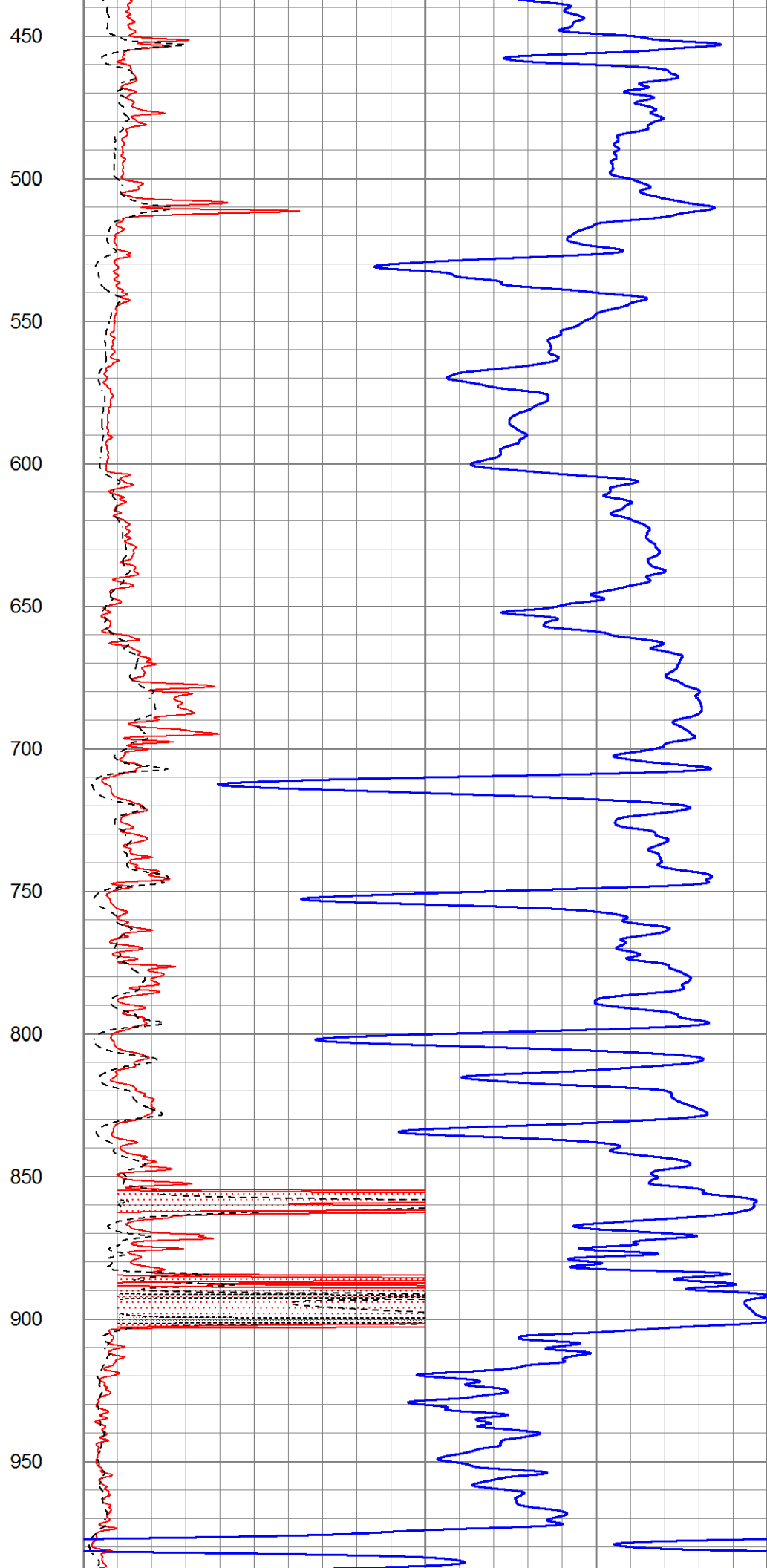
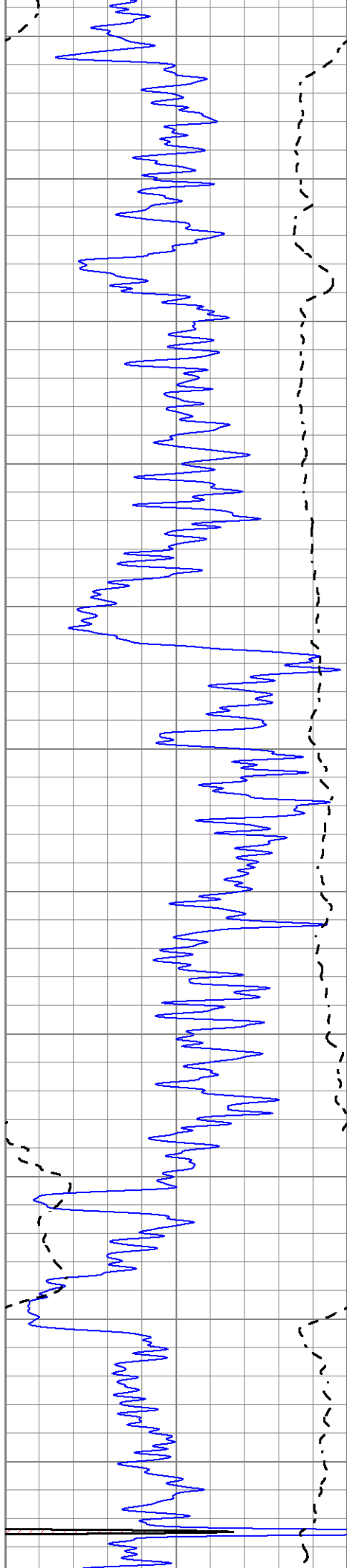
MAIN SECTION

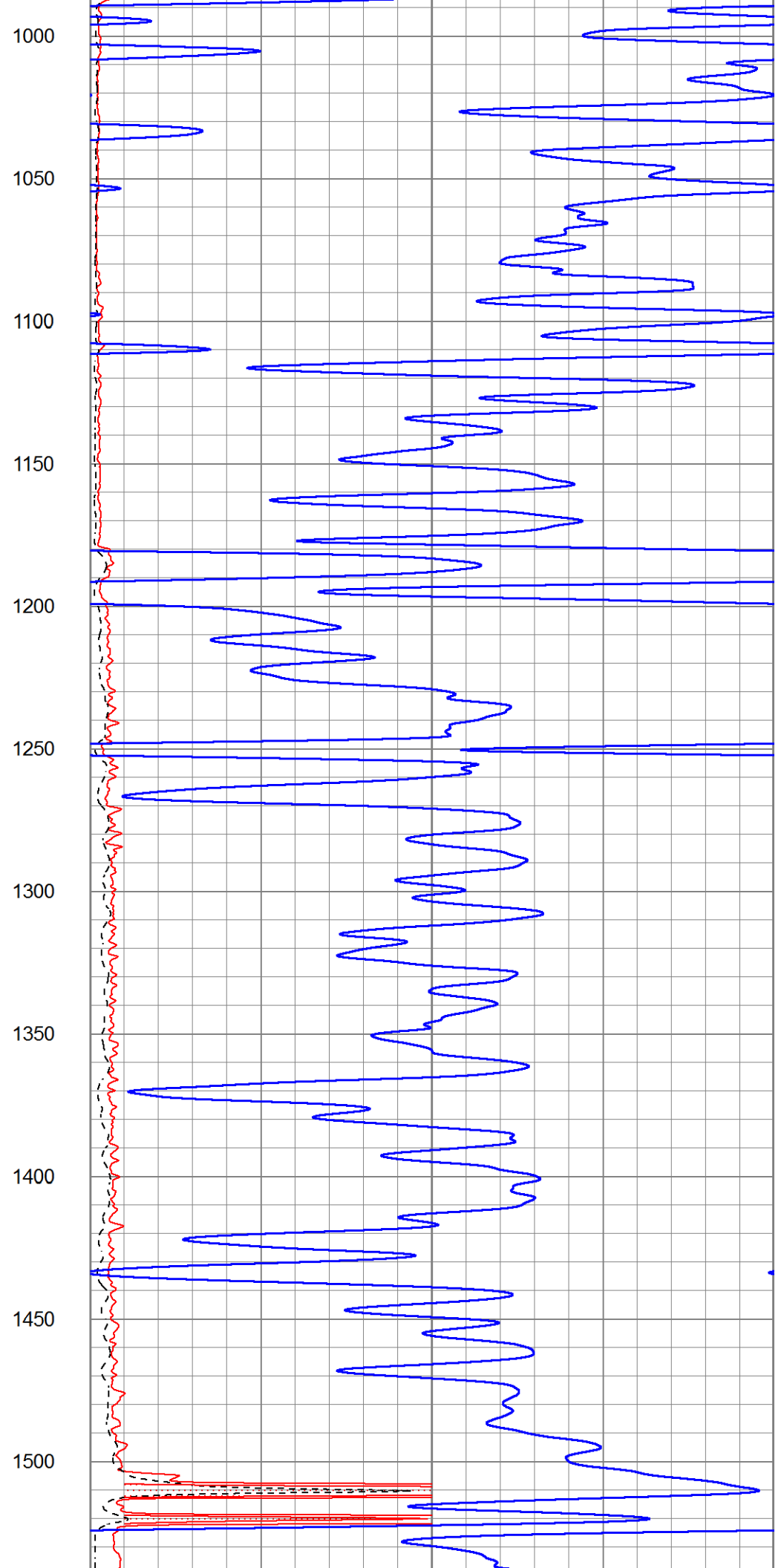
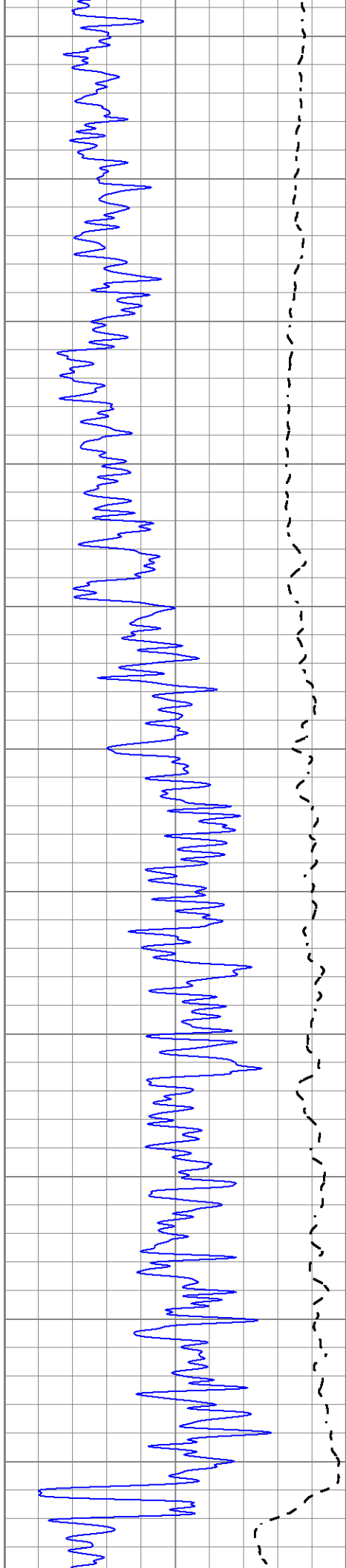
Database File 5215pe.db  
 Dataset Pathname pass3.3  
 Presentation Format \_dil2  
 Dataset Creation Thu Apr 22 12:15:03 2021  
 Charted by Depth in Feet scaled 1:600

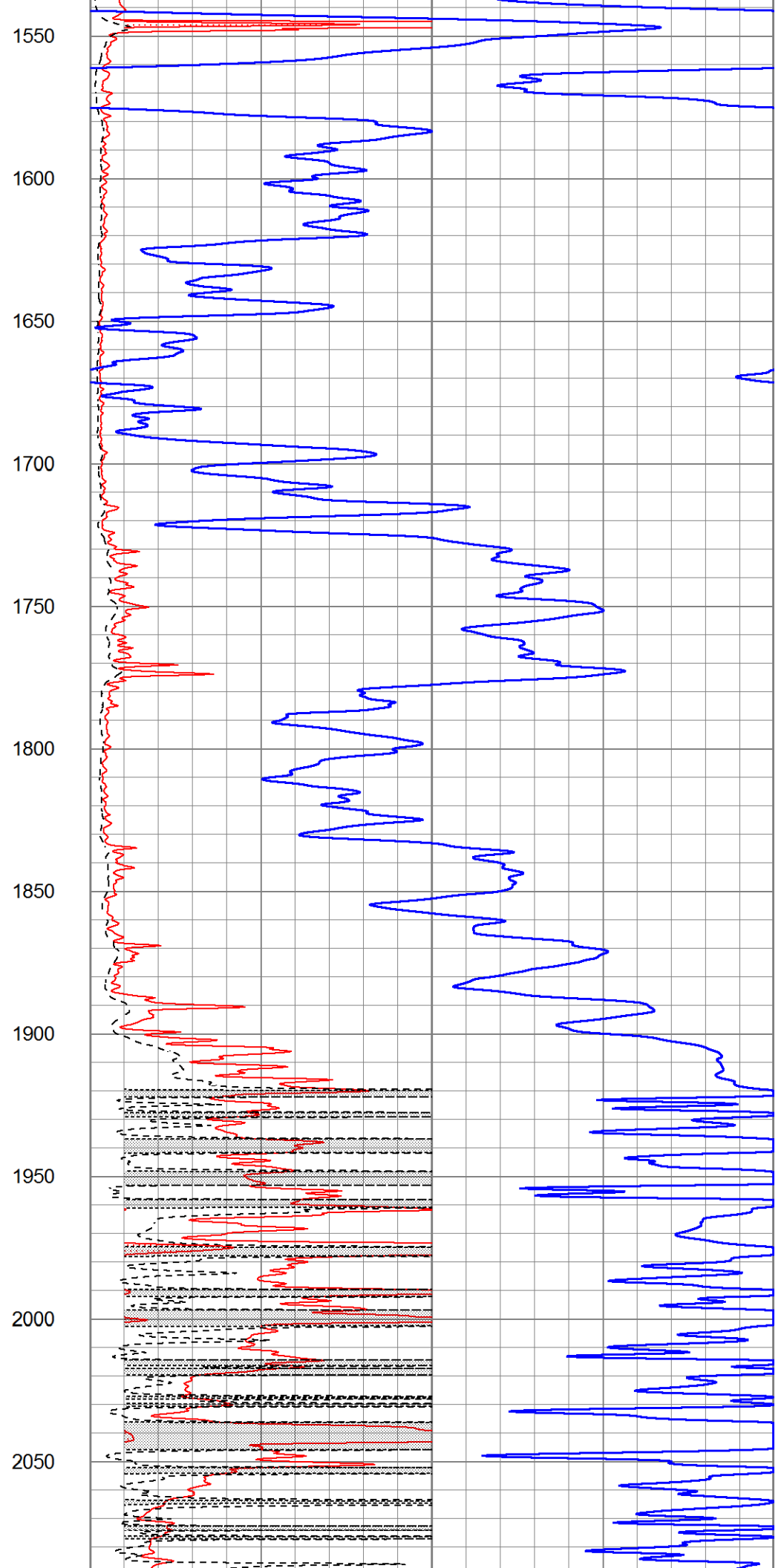
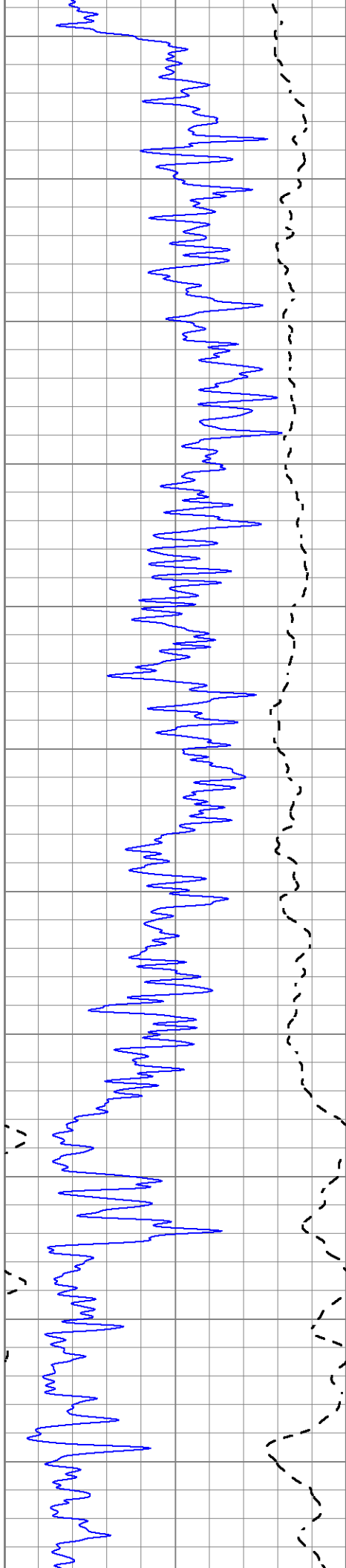
0	Gamma Ray (GAPI)	150
-100	SP (mV)	100

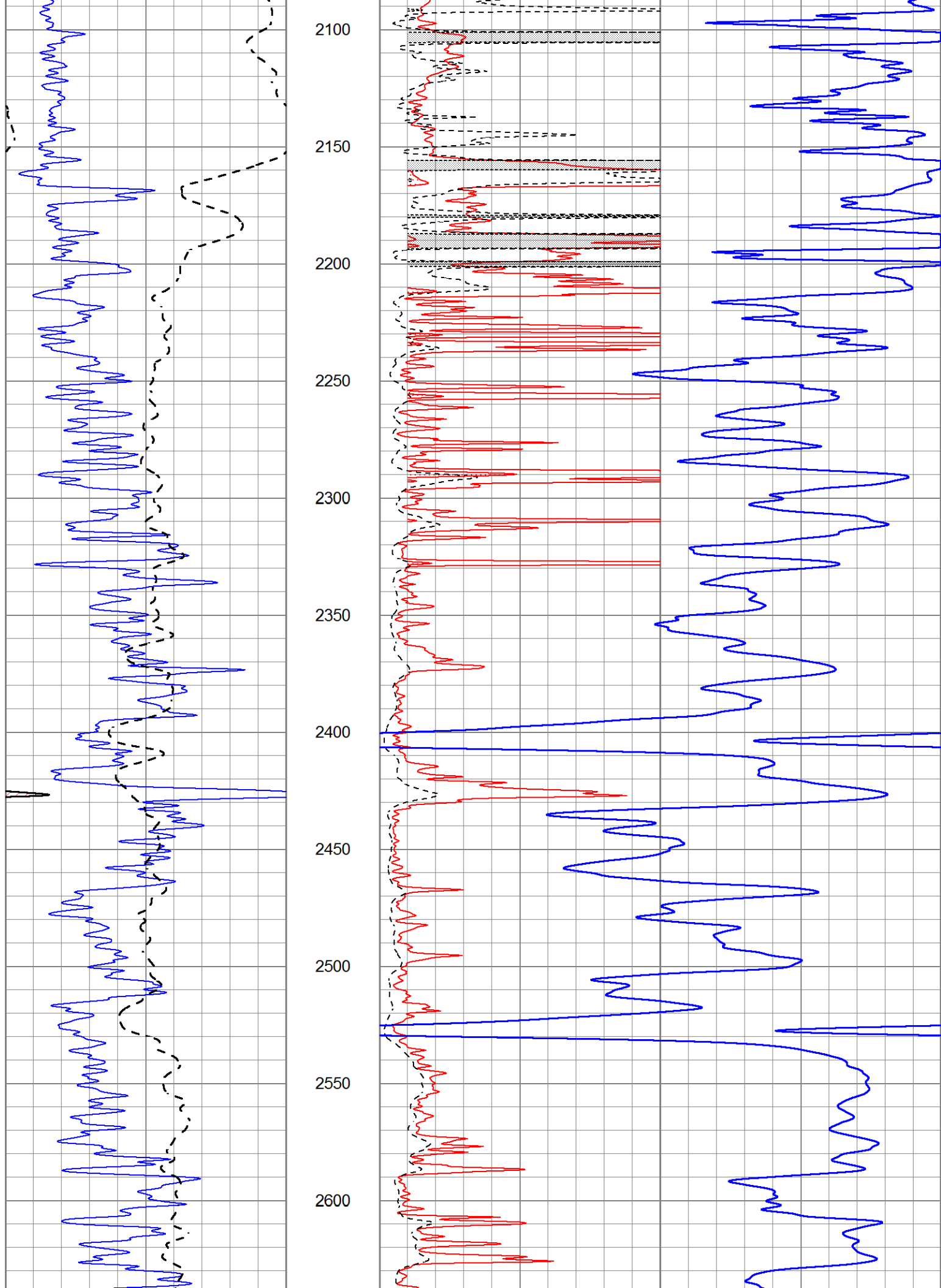
1000	CILD (mmho/m)	0
0	RLL3 (Ohm-m)	50
0	Deep Induction (Ohm-m)	50
50	RILD X10 (Ohm-m)	500
50	RLL3 X10 (Ohm-m)	500

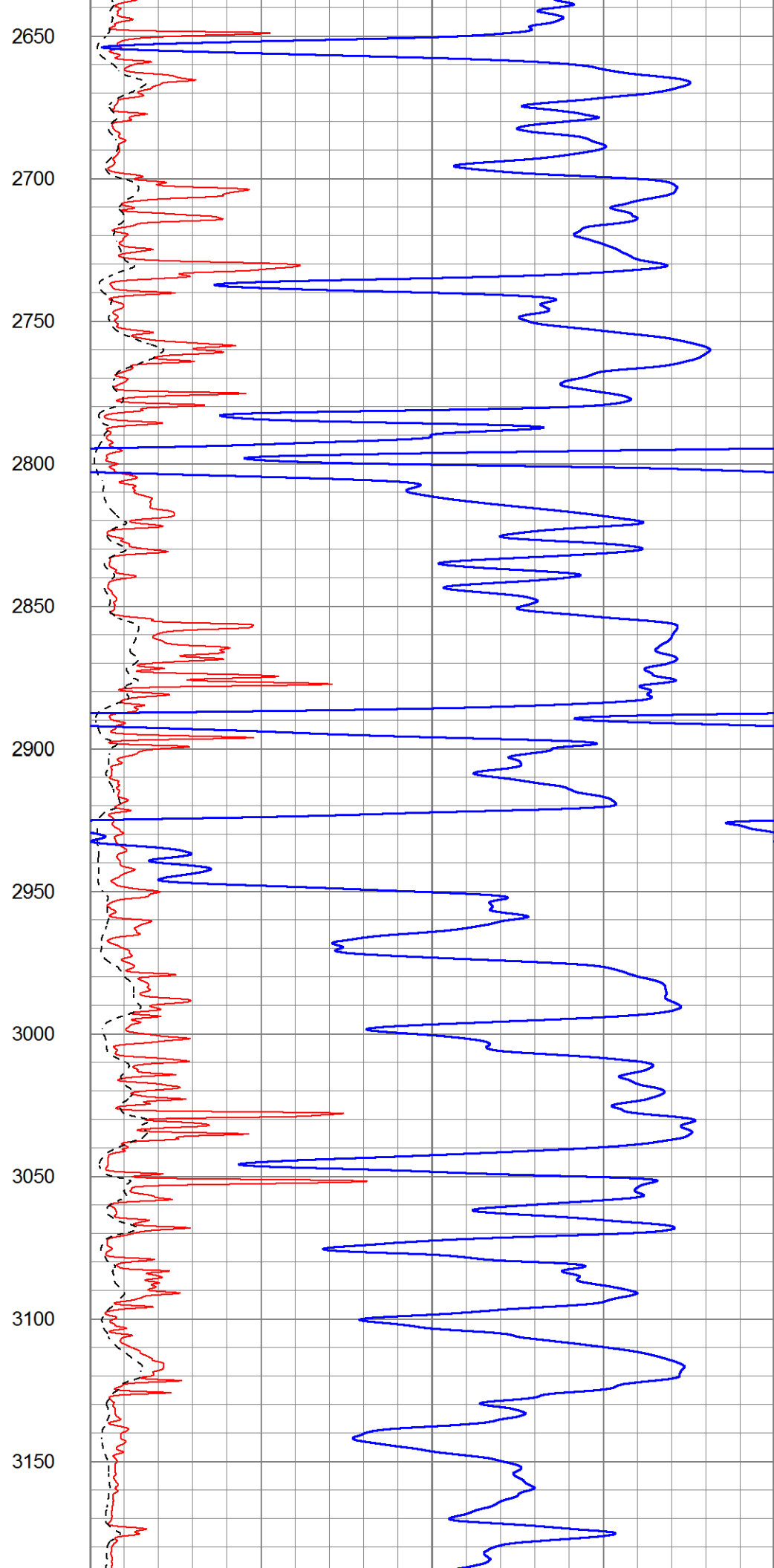
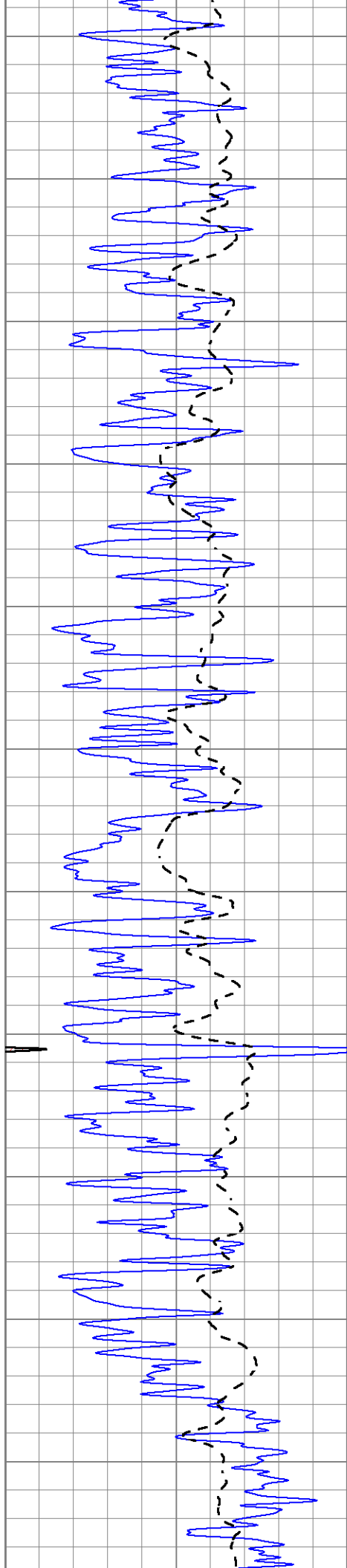


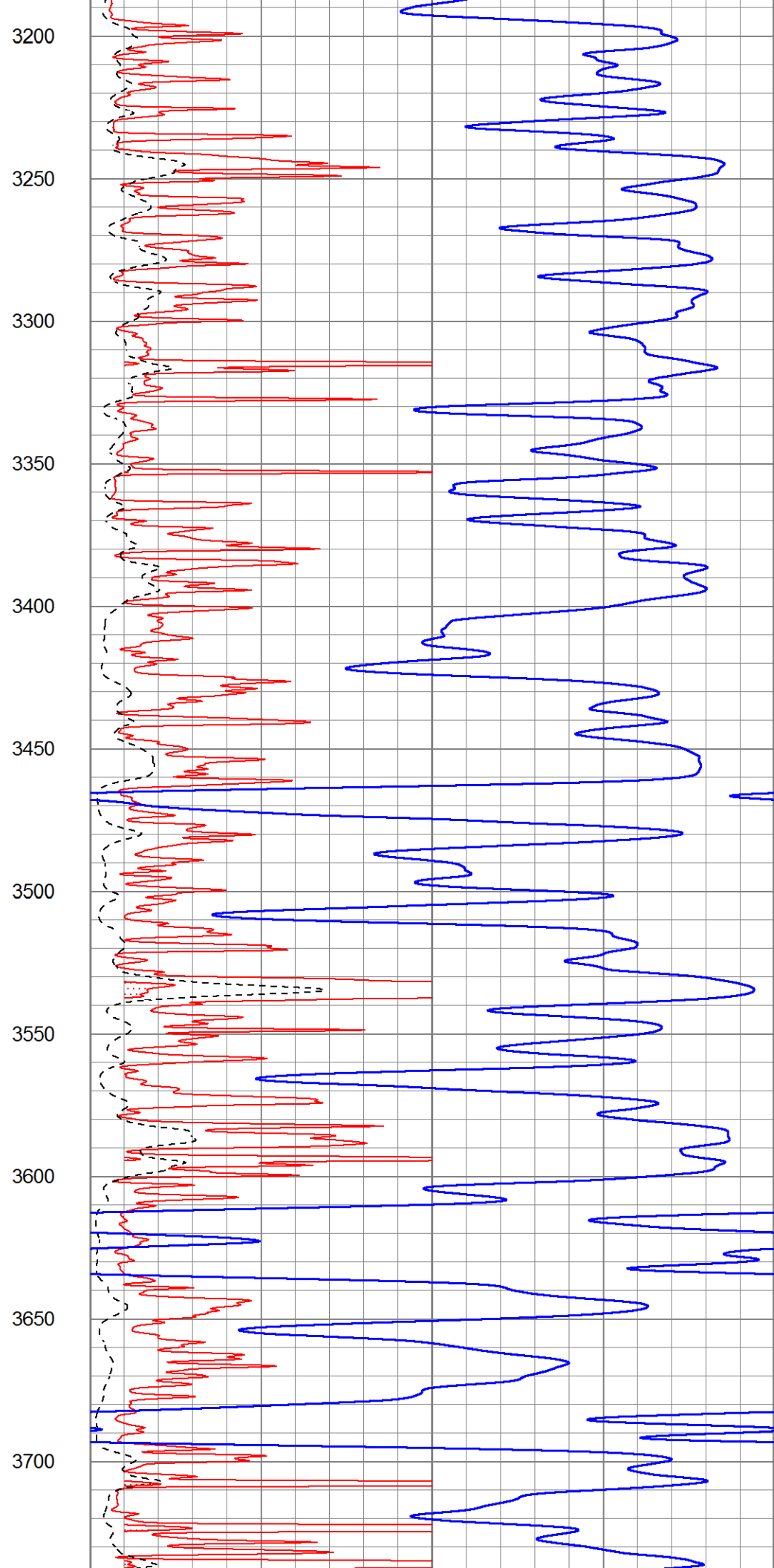
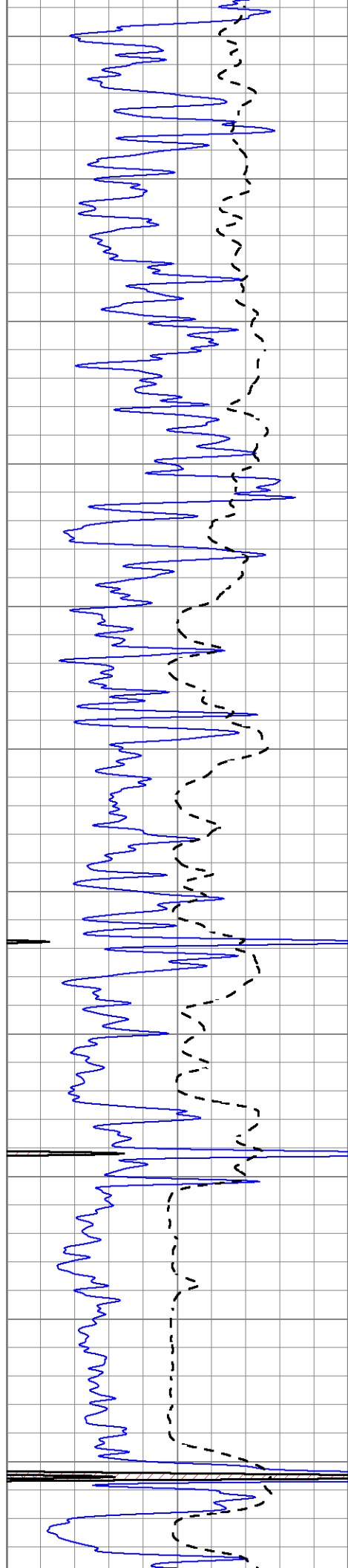


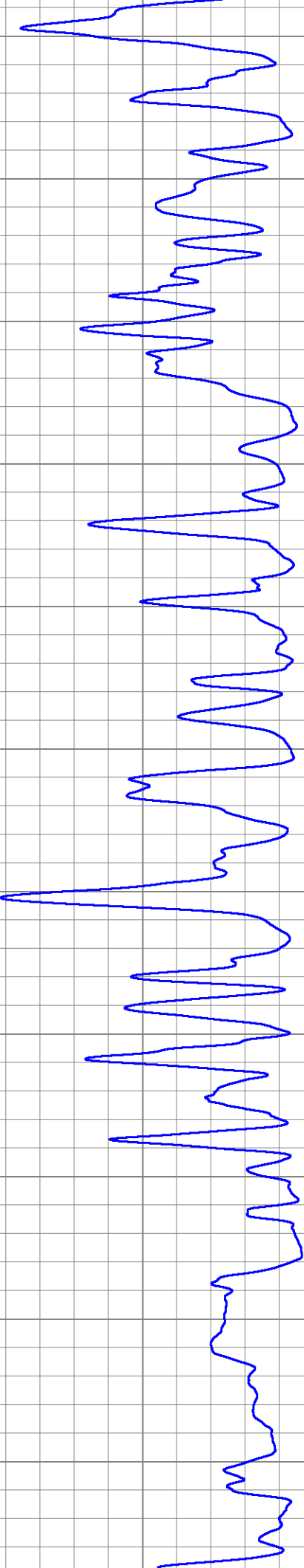
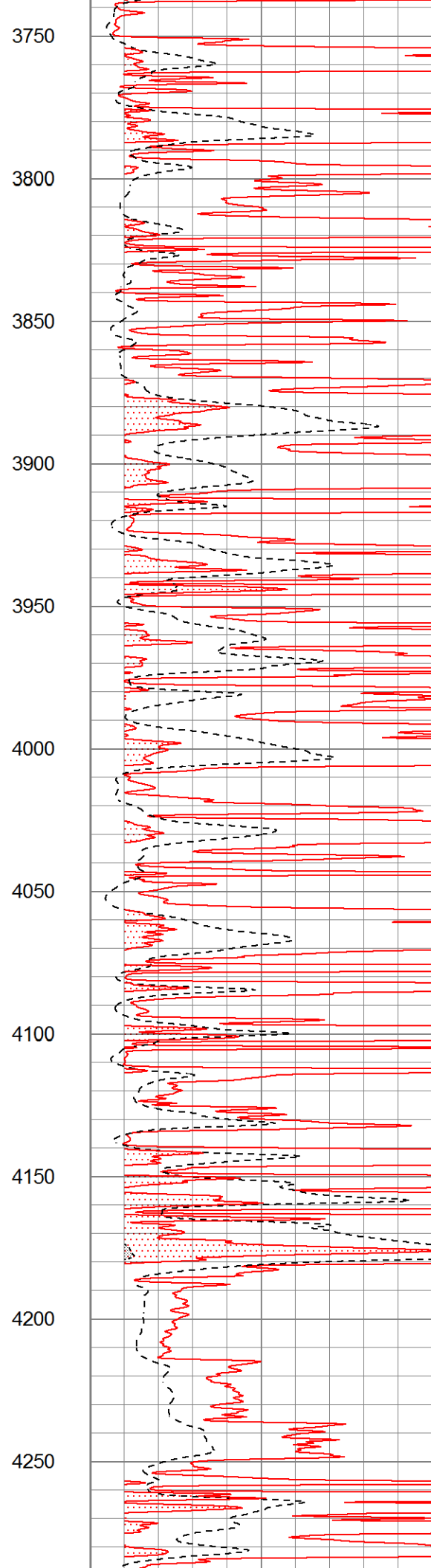
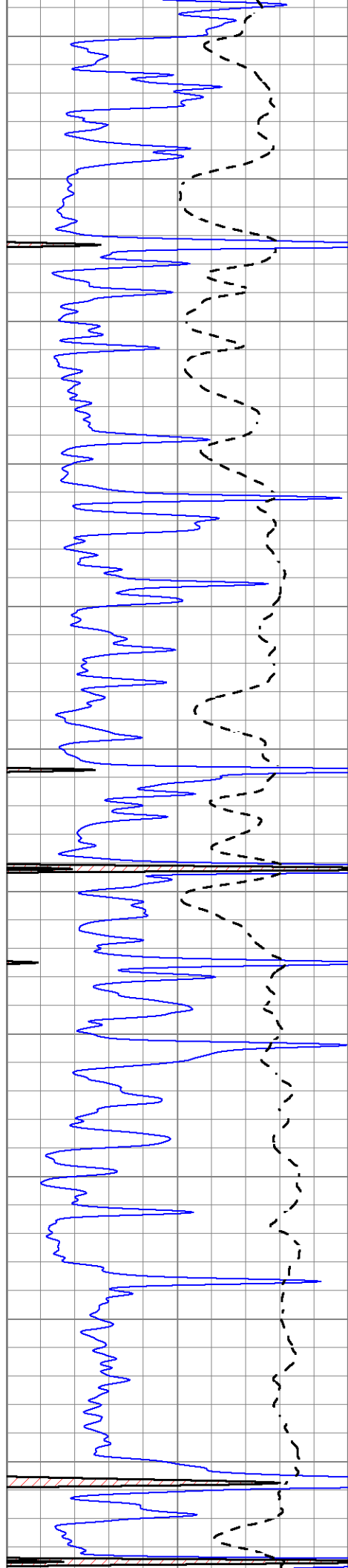


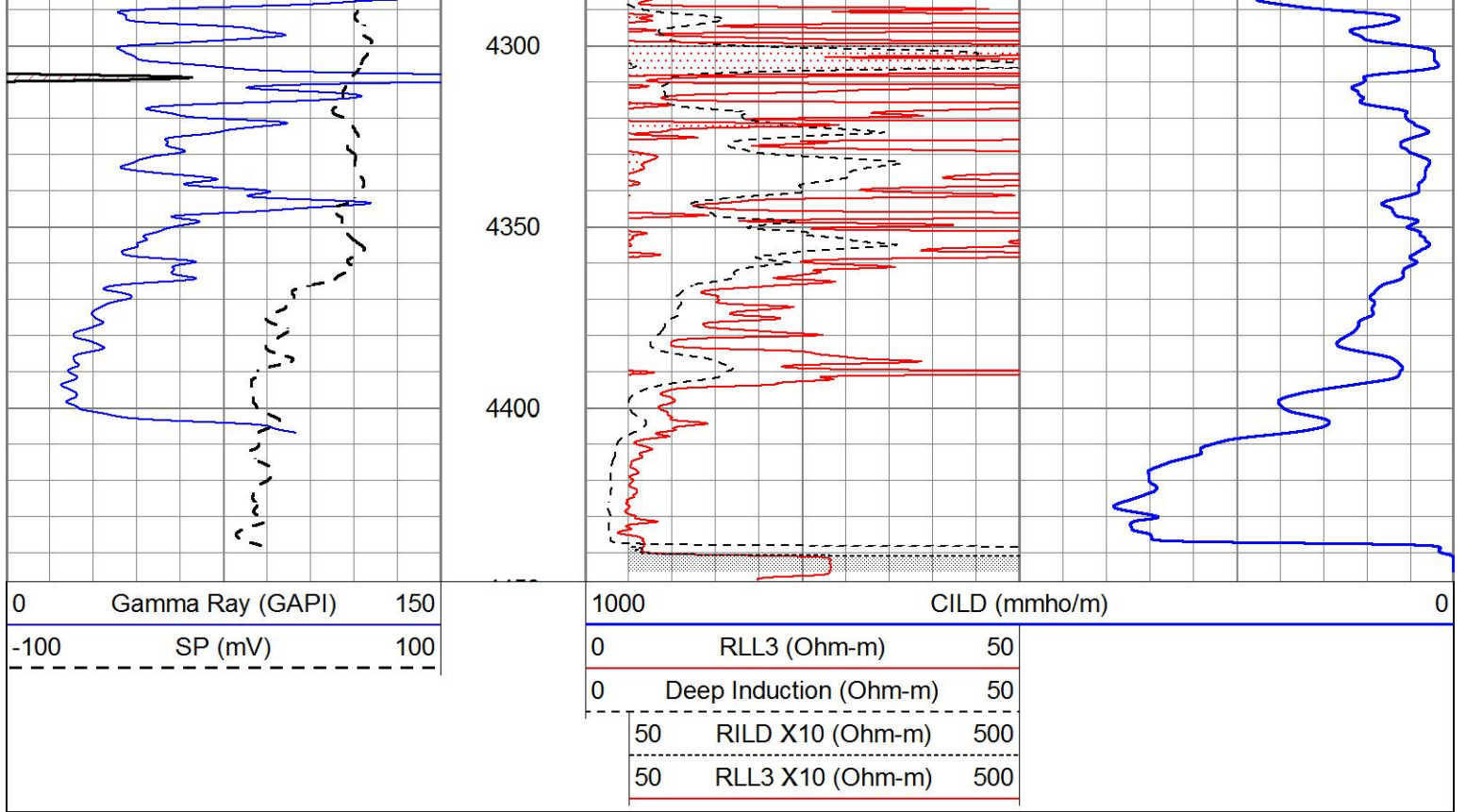








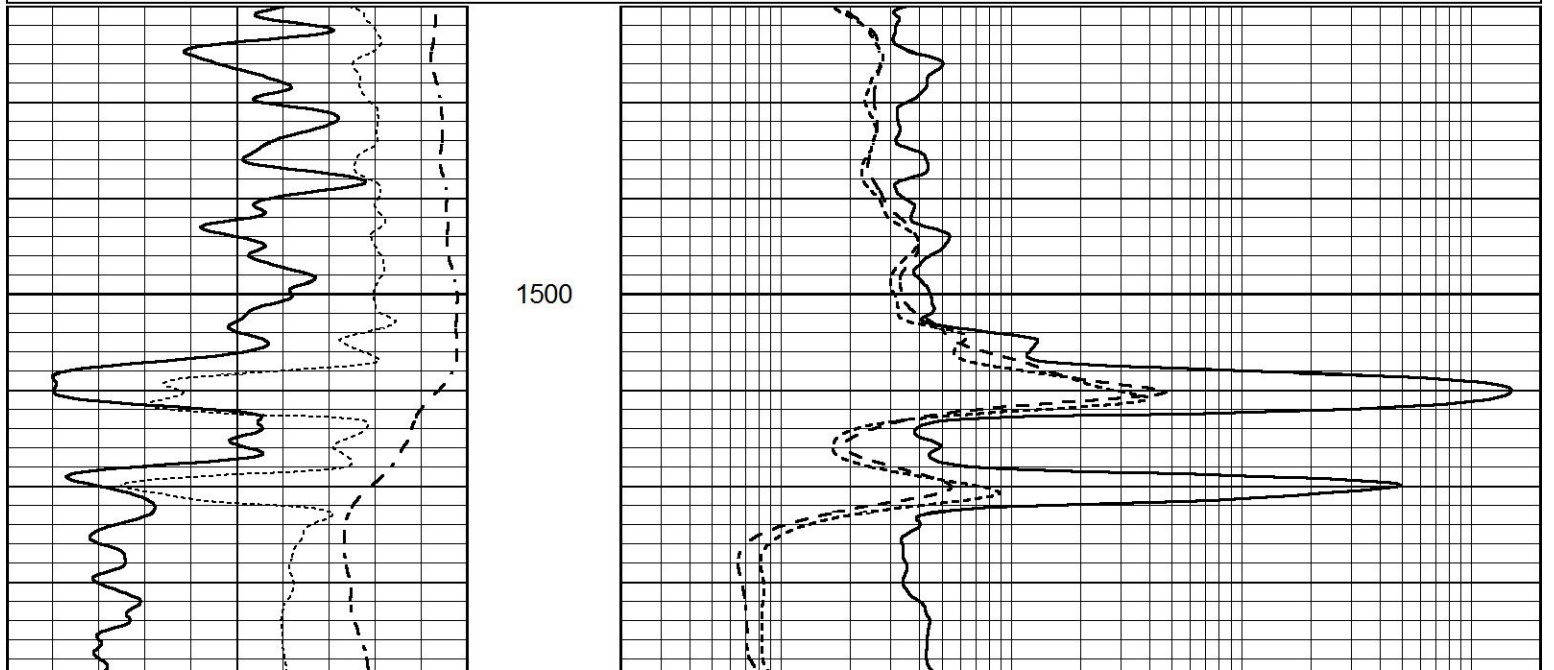


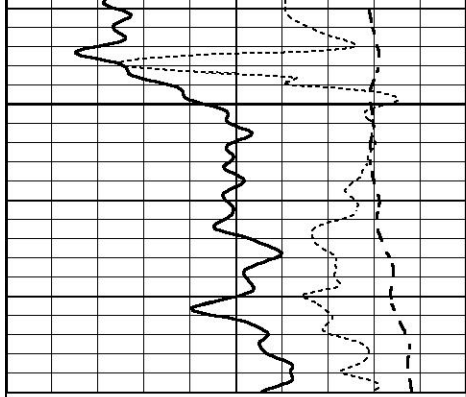


# ANHYDRITE

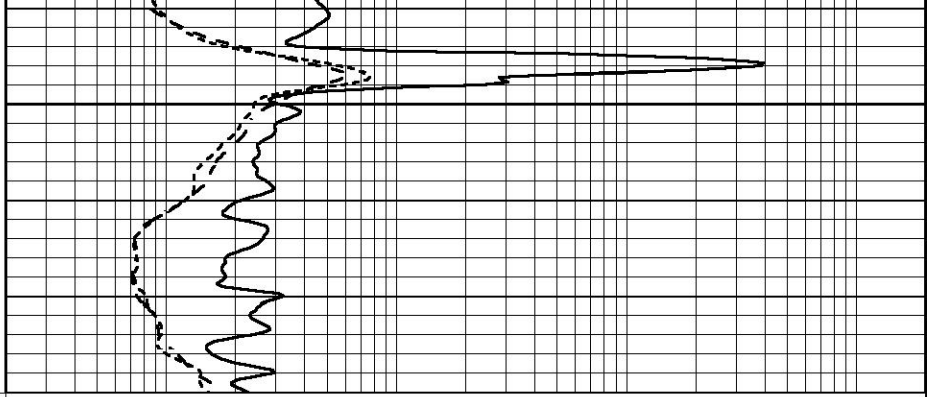
Database File 5215pe.db  
 Dataset Pathname pass3.2  
 Presentation Format \_dil  
 Dataset Creation Thu Apr 22 11:12:17 2021  
 Charted by Depth in Feet scaled 1:240

0	GAMMA RAY (GAPI)	150	0.2	SHALLOW GUARD (Ohm-m)	2000
-100	SP (mV)	100	0.2	MEDIUM INDUCTION (Ohm-m)	2000
-250	Rxo/Rt	50	0.2	DEEP INDUCTION (Ohm-m)	2000





1550



0	GAMMA RAY (GAPI)	150
-100	SP (mV)	100
-250	Rxo/Rt	50

0.2	SHALLOW GUARD (Ohm-m)	2000
0.2	MEDIUM INDUCTION (Ohm-m)	2000
0.2	DEEP INDUCTION (Ohm-m)	2000

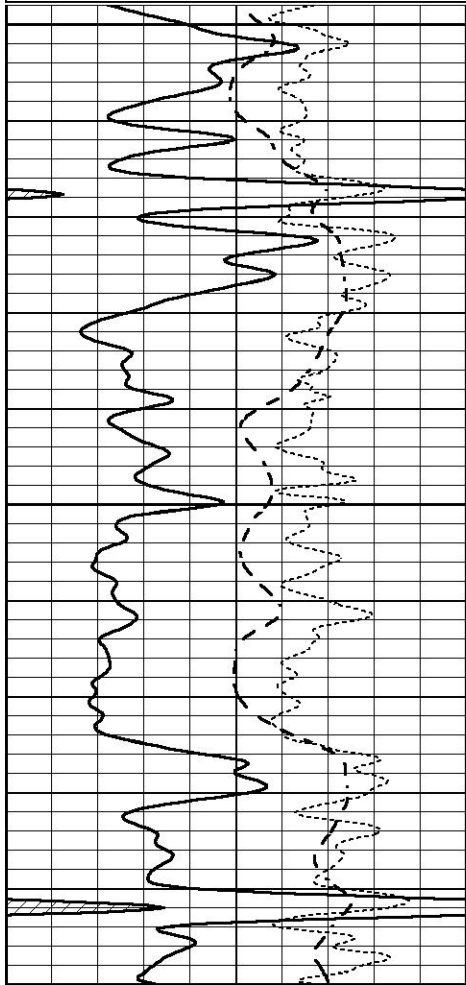


# MAIN SECTION

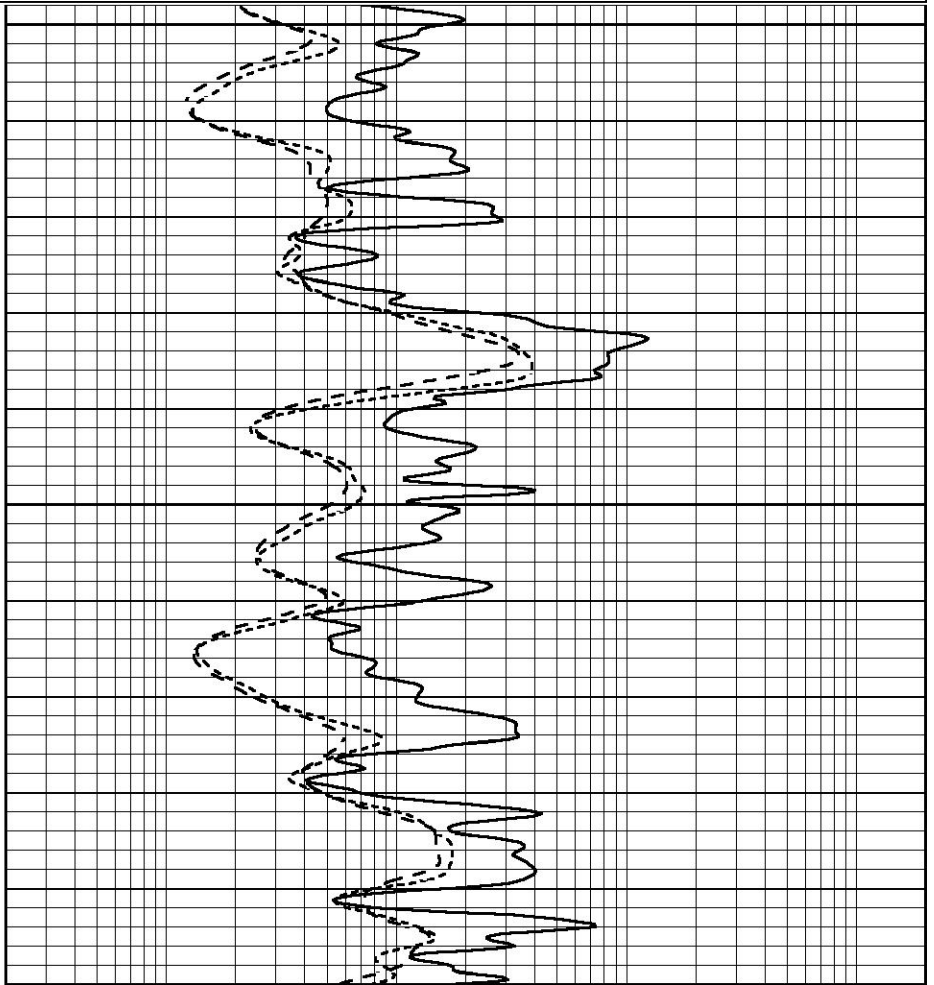
Database File 5215pe.db  
 Dataset Pathname pass3.12  
 Presentation Format \_dil  
 Dataset Creation Thu Apr 22 10:53:55 2021  
 Charted by Depth in Feet scaled 1:240

0	GAMMA RAY (GAPI)	150
-100	SP (mV)	100
-250	Rxo/Rt	50

0.2	SHALLOW GUARD (Ohm-m)	2000
0.2	MEDIUM INDUCTION (Ohm-m)	2000
0.2	DEEP INDUCTION (Ohm-m)	2000



3500



3550

3600

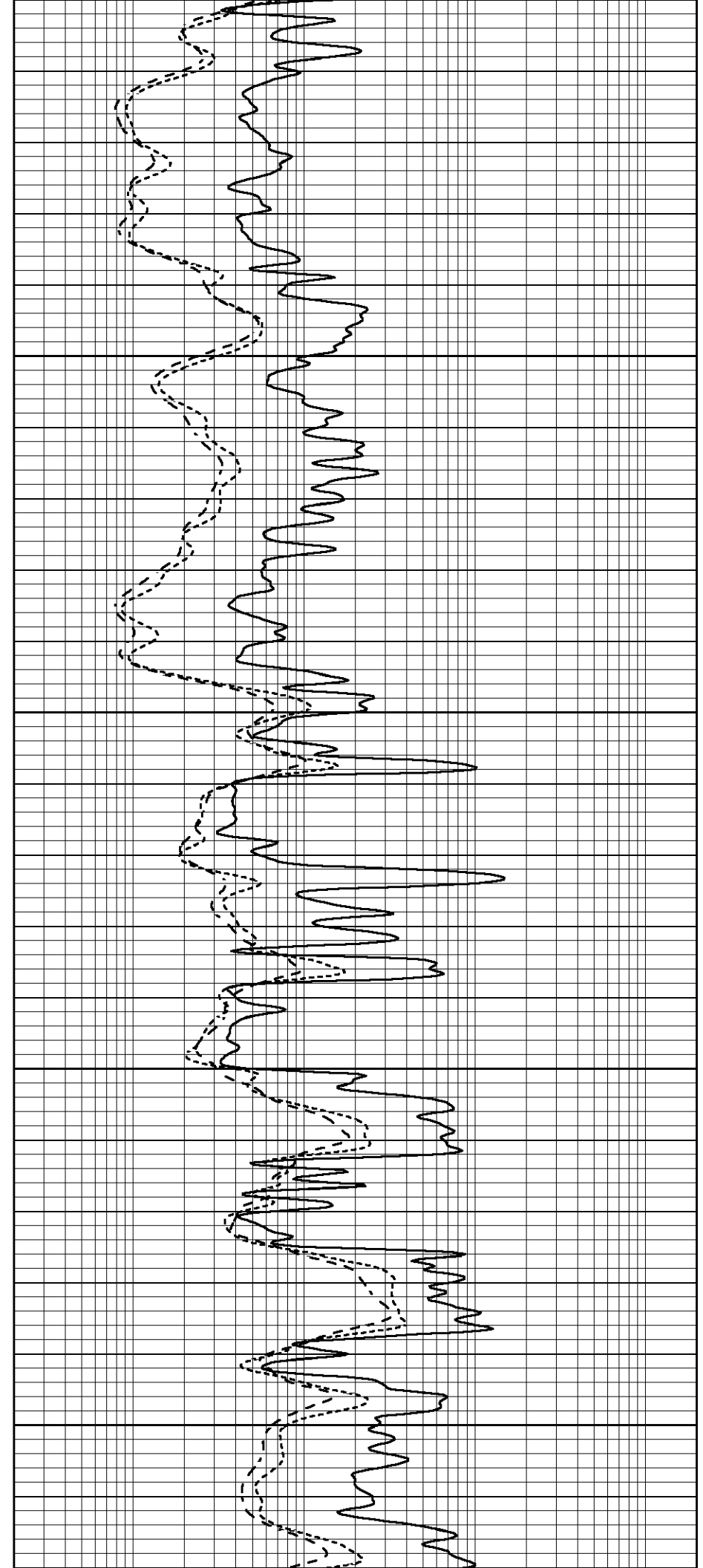
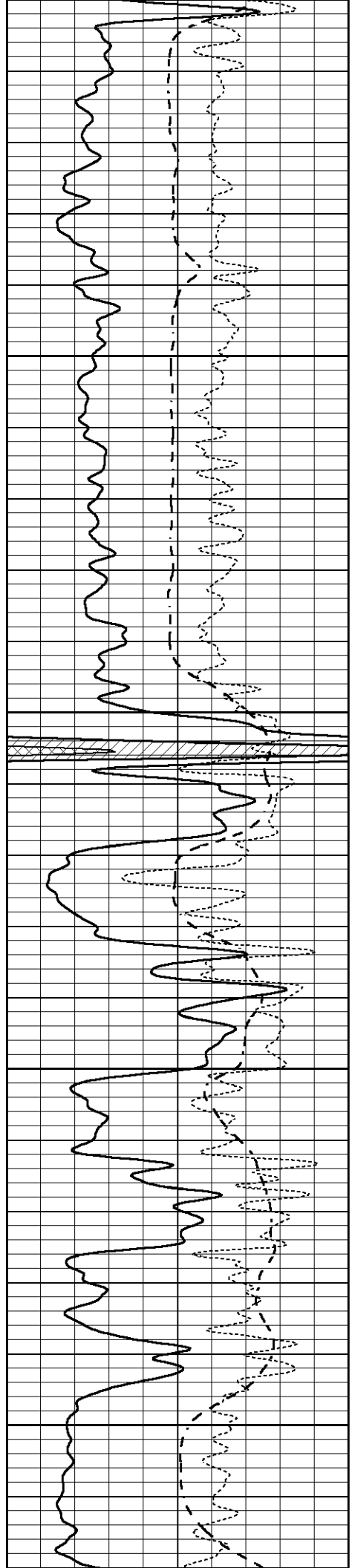
3500

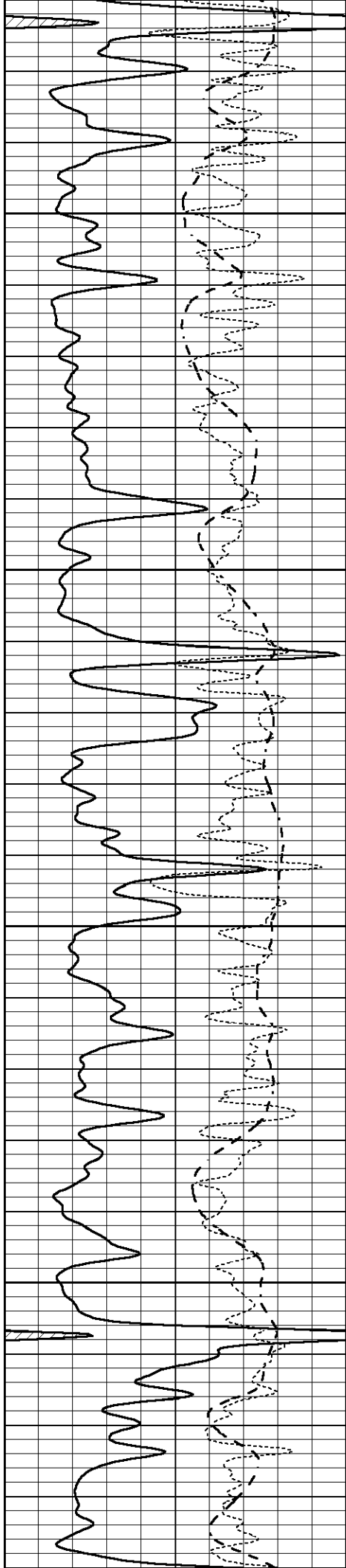
3650

3700

3750

3800



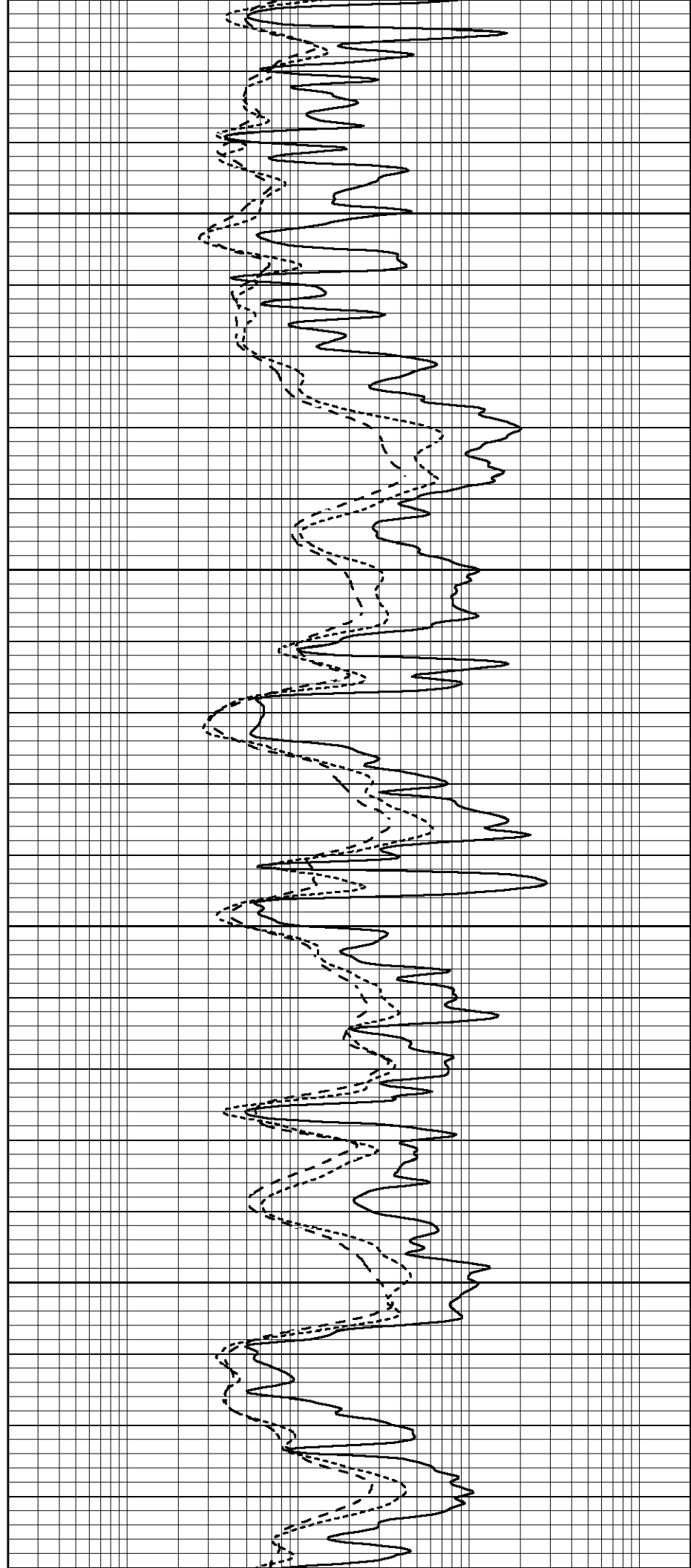


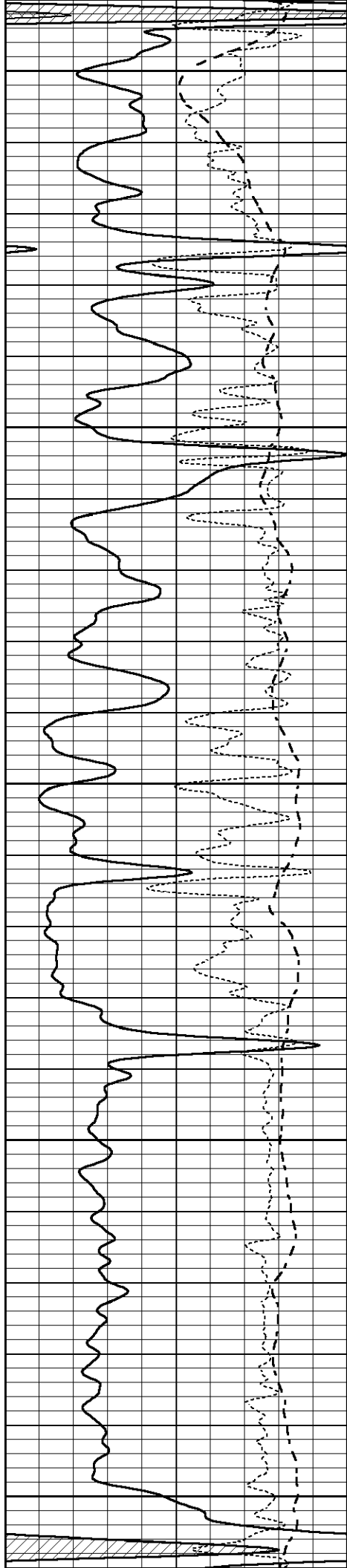
3850

3900

3950

4000





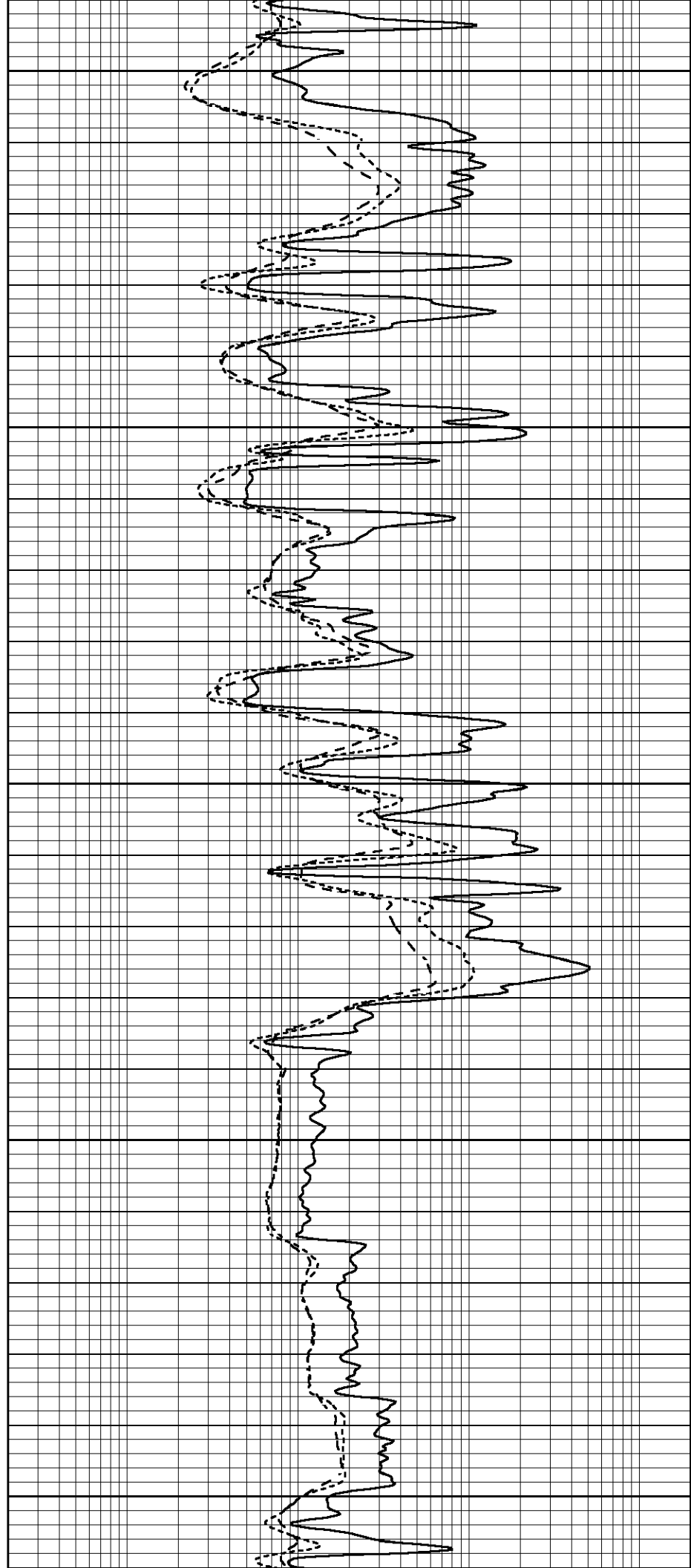
4050

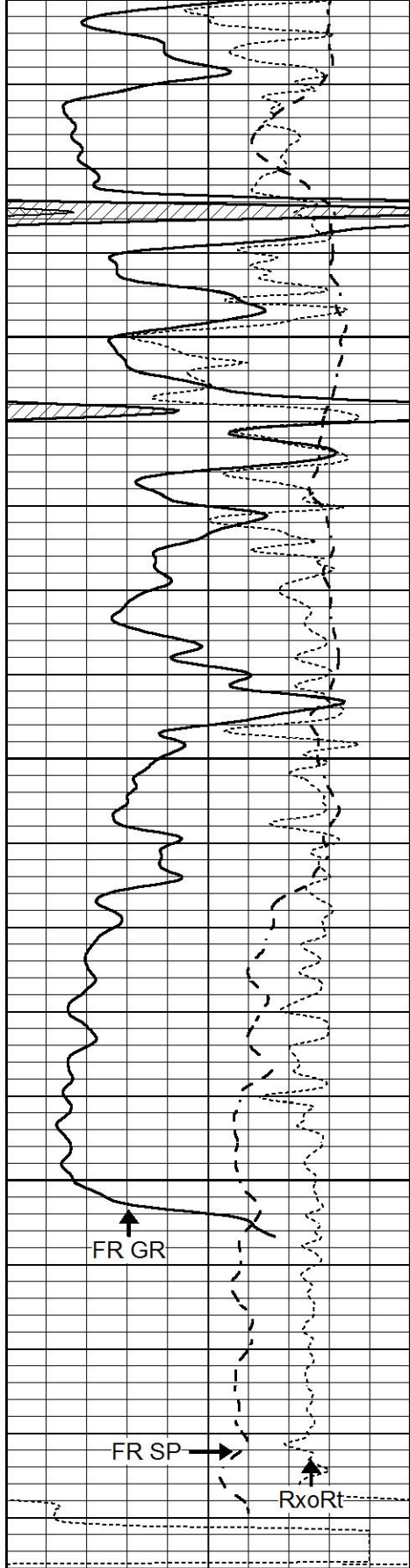
4100

4150

4200

4250





4300

4350

4400

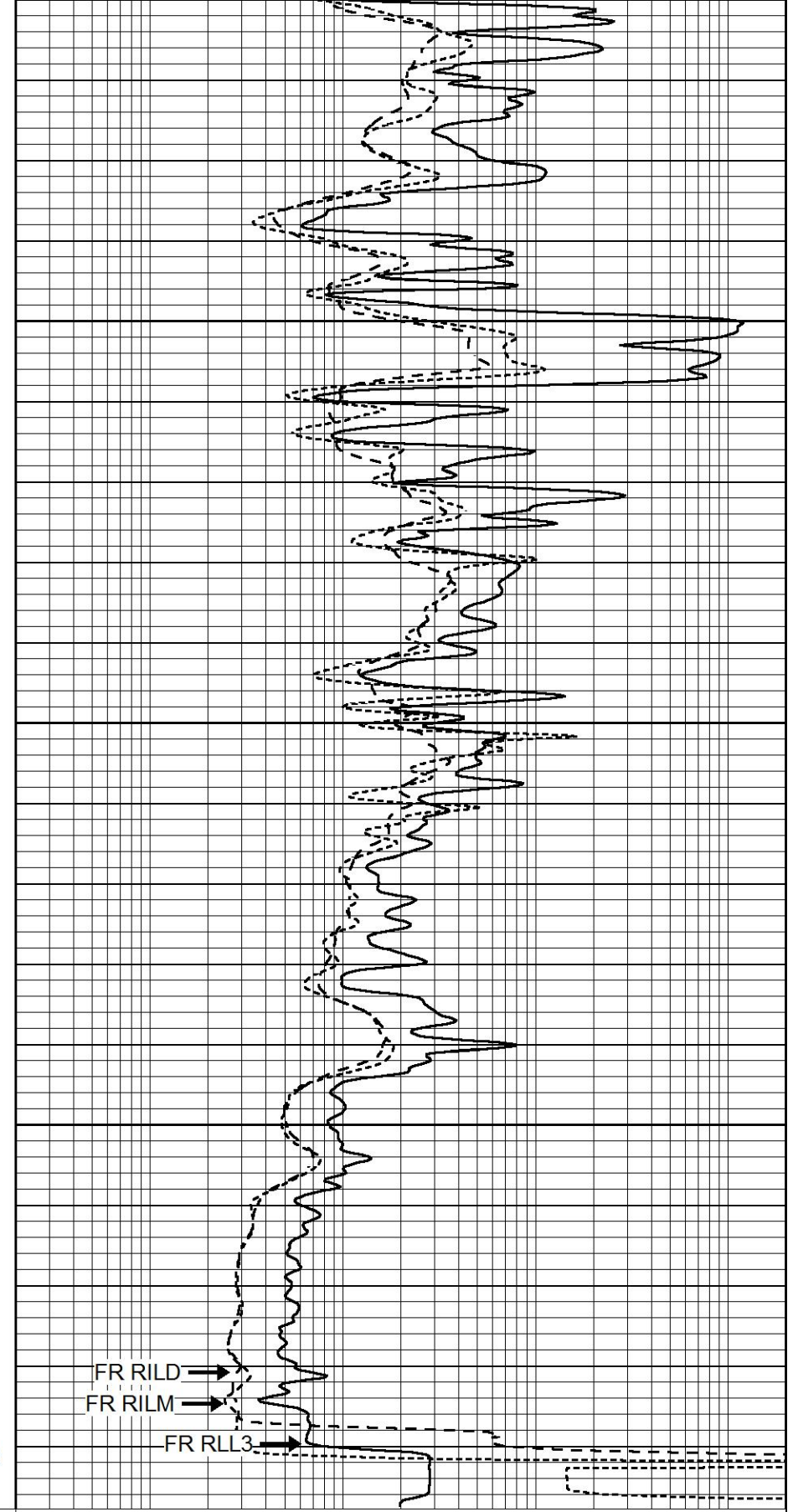
FR GR

FR SP

Rxo/Rt

LTD 4442

0	GAMMA RAY (GAPI)	150
-100	SP (mV)	100
-250	Rxo/Rt	50



FR RILD

FR RILM

FR RLL3

0.2	SHALLOW GUARD (Ohm-m)	2000
0.2	MEDIUM INDUCTION (Ohm-m)	2000
0.2	DEEP INDUCTION (Ohm-m)	2000

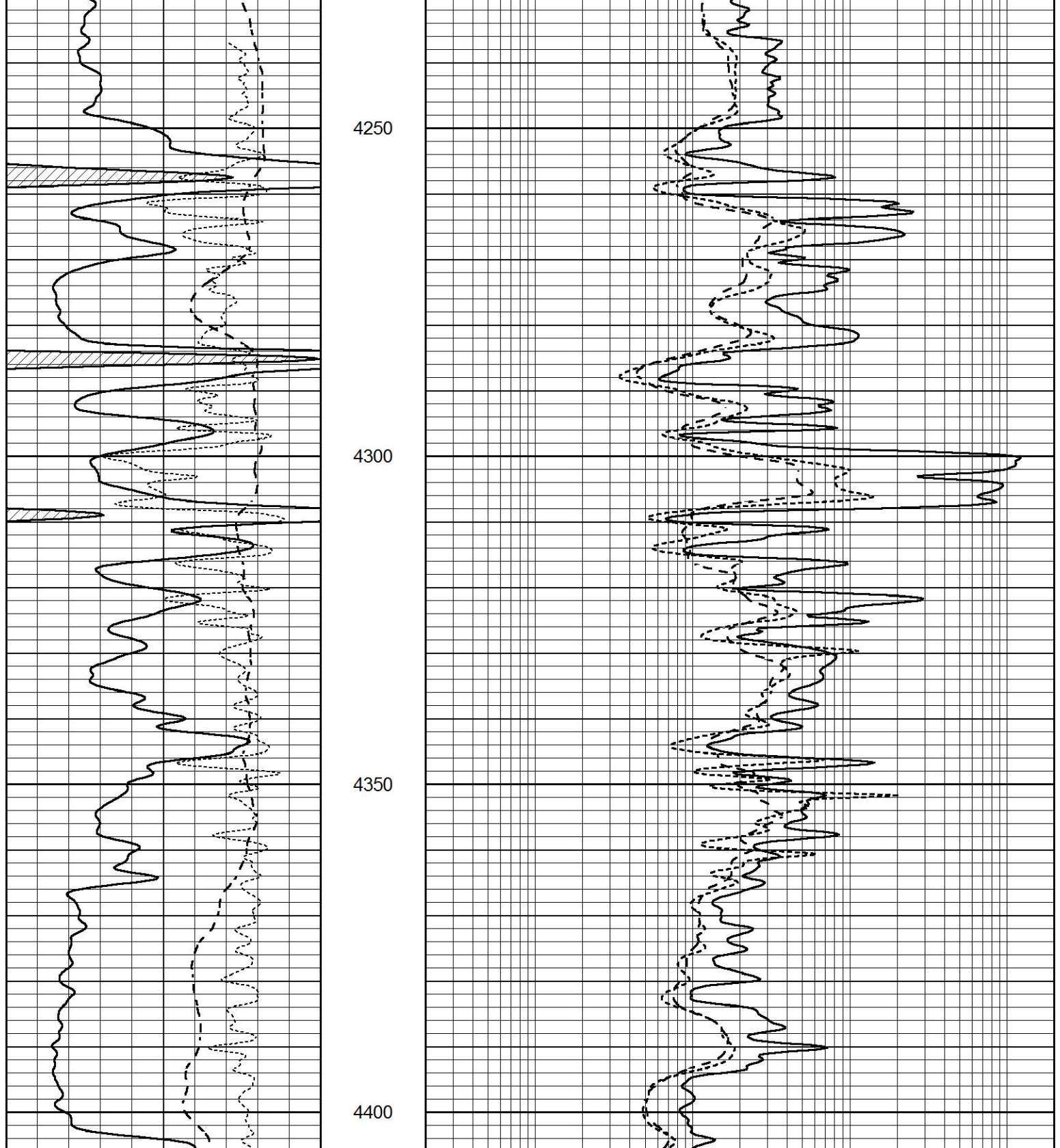


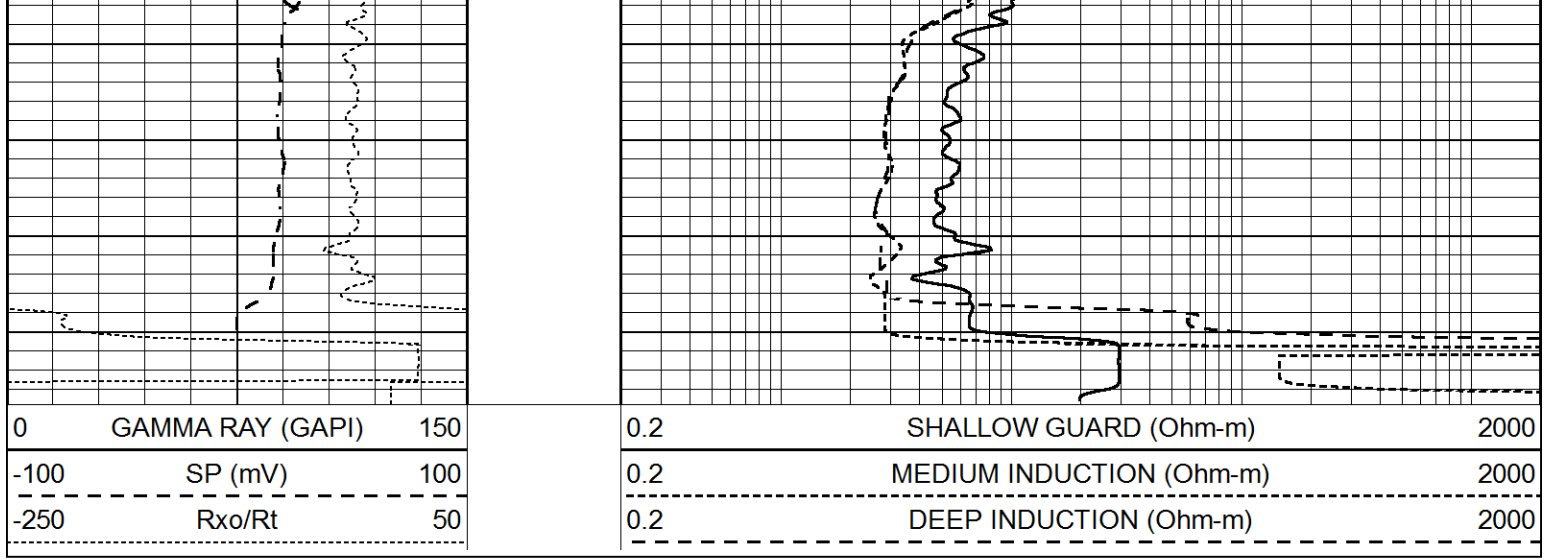
REPEAT SECTION

# REFLECT SECTION

Database File 5215pe.db  
 Dataset Pathname pass2.1  
 Presentation Format \_dil  
 Dataset Creation Thu Apr 22 11:10:25 2021  
 Charted by Depth in Feet scaled 1:240

0	GAMMA RAY (GAPI)	150	0.2	SHALLOW GUARD (Ohm-m)	2000
-100	SP (mV)	100	0.2	MEDIUM INDUCTION (Ohm-m)	2000
-250	Rxo/Rt	50	0.2	DEEP INDUCTION (Ohm-m)	2000





Calibration Report

Database File 5215pe.db  
 Dataset Pathname pass2.1  
 Dataset Creation Thu Apr 22 11:10:25 2021

Dual Induction Calibration Report

Serial-Model: FW1410-55-Probe  
 Surface Cal Performed: Tue Feb 19 11:44:18 2019  
 Downhole Cal Performed: Tue Feb 19 11:44:24 2019  
 After Survey Verification Performed: Tue Feb 19 11:44:27 2019

Surface Calibration

Loop:	Readings			V	References			Results	
	Air	Loop			Air	Loop		m	b
Deep	0.011	0.656			1.000	400.000	mmho/m	618.595	-5.524
Medium	-0.000	0.731			1.000	464.000	mmho/m	632.856	1.197
Internal:	Zero	Cal		Zero	Cal		m	b	
Deep	0.007	0.649		0.000	400.000	mmho/m	623.784	-4.595	
Medium	0.004	0.743		0.000	464.000	mmho/m	627.284	-2.251	

Downhole Calibration

	Readings			mmho/m	References			Results	
	Zero	Cal			Zero	Cal		m'	b'
Deep	-0.824	395.917			-0.976	397.550	mmho/m	1.004	-0.149
Medium	3.565	471.327			3.468	471.590	mmho/m	1.001	-0.099
LL3		7.503				1500.000	Ohm-m		
		0.001				20.000	Ohm-m		
		-7.481				3745.000	mmho-m		

After Survey Verification

	Readings			mmho/m	Targets			Results	
	Zero	Cal			Zero	Cal		m'	b'
Deep	0.000	0.000			-0.824	395.917	mmho/m	1.000	0.000
Medium	0.000	0.000			3.565	471.327	mmho/m	1.000	0.000
LL3		0.000				1500.000	Ohm-m		
		0.000				20.000	Ohm-m		
		0.000				3745.000	mmho-m		

Litho Density Calibration Report

Master Calibration

Performed: Wed Dec 02 12:04:44 2020

	Background	Aluminum	Magnesium		
Window 1	595.38	5386.50	23898.92	cps	
Window 2	52.78	1248.21	5993.75	cps	
Window 4	251.36	1200.30	5155.55	cps	
Window 5	545.15	9066.30	17240.12	cps	
Window 6	43.35	1491.73	2929.24	cps	
Window 8	258.76	2917.82	5450.26	cps	
Bulk Density	-	2.6020	1.6830	g/cc	
Pe	-	3.0000	2.5070	b/e	
LS Alpha:	: -1.8726	SS Alpha:	: -0.7656	LS CPE:	: 1.0742
LS Beta:	: 127345.0723	SS Beta:	: 20293.3834	SS CPE:	: 1.5427

Before Survey Background Counts Verification

Performed: Wed Dec 31 18:00:00 1969

Window 1	0.00	cps
Window 2	0.00	cps
Window 4	0.00	cps
Window 5	0.00	cps
Window 6	0.00	cps
Window 8	0.00	cps

After Survey Background Counts Verification

Performed: Wed Dec 31 18:00:00 1969

Window 1	0.00	cps
Window 2	0.00	cps
Window 4	0.00	cps
Window 5	0.00	cps
Window 6	0.00	cps
Window 8	0.00	cps

Lithodensity Caliper Calibration

Performed: Wed Dec 02 12:04:44 2020

Results		Readings		References (in)		Gain	Offset
Low	High	Low	High	Low	High		
8003.0	11159.9	8.0	14.0			0.0	-7.2

Before Survey Caliper Verification

Performed:

	Reference	Reading
Caliper (in)	_____	_____

After Survey Caliper Verification

Performed:

	Reference	Reading
Caliper (in)	_____	_____

Serial Number: 080621PMC  
Tool Model: NABORS

PRE-SURVEY VERIFICATION

Detector	Readings	Measured	Target
Short Space	cps		
Long Space	cps	pu	pu

POST-SURVEY VERIFICATION

Detector	Readings	Measured	Target
Short Space	cps		
Long Space	cps	pu	pu

Gamma Ray Calibration Report

Serial Number:	7	
Tool Model:	Probe1	
Performed:	Tue Jan 19 17:50:08 2021	
Calibrator Value:	1.0	GAPI
Background Reading:	0.0	cps
Calibrator Reading:	1.0	cps
Sensitivity:	0.5300	GAPI/cps