

MICRO
LOG



Company MUSTANG ENERGY
Well GARY #3
Field STAR
County ELLIS
State KANSAS

Company MUSTANG ENERGY
Well GARY #3
Field STAR
County ELLIS
State KANSAS

Location: 1830' FSL & 1175' FEL
API #: 15-051-27007-0000
Permanent Datum GROUND LEVEL Elevation 2131
Log Measured From KELLY BUSHING 7' A.G.L
Drilling Measured From KELLY BUSHING
Elevation
K.B. 2138
D.F. 2136
G.L. 2131

Date	8/1/21		
Run Number	TWO		
Depth Driller	3780		
Depth Logger	3780		
Bottom Logged Interval	3778		
Top Log Interval	3050		
Casing Driller	8 5/8" @ 214'		
Casing Logger	214		
Bit Size	7 7/8		
Type Fluid in Hole	CHEMICAL MUD	CHLORIDES 4000 PPM	
Density / Viscosity	9.3/51		
pH / Fluid Loss	9.5/8.8		
Source of Sample	FLOWLINE		
Rm @ Meas. Temp	.65 @ 80F		
Rmf @ Meas. Temp	.48 @ 80F		
Rmc @ Meas. Temp	.78 @ 80F		
Source of Rmf / Rmc	MEASUREMENT		
Rm @ BHT	.45 @ 114F		
Time Circulation Stopped	2 HOURS		
Time Logger on Bottom	////		
Maximum Recorded Temperature	114F		
Equipment Number	3802		
Location	HAYS, KANSAS		
Recorded By	JASON CAPPELLUCCI		
Witnessed By	CAMERON BRIN		

<<< Fold Here >>>

All interpretations are opinions based on inferences from electrical or other measurements and we cannot and do not guarantee the accuracy or correctness of any interpretation, and we shall not, except in the case of gross or willful negligence on our part, be liable or responsible for any loss, costs, damages, or expenses incurred or sustained by anyone resulting from any interpretation made by any of our officers, agents or employees. These interpretations are also subject to our general terms and conditions set out in our current Price Schedule.

Comments

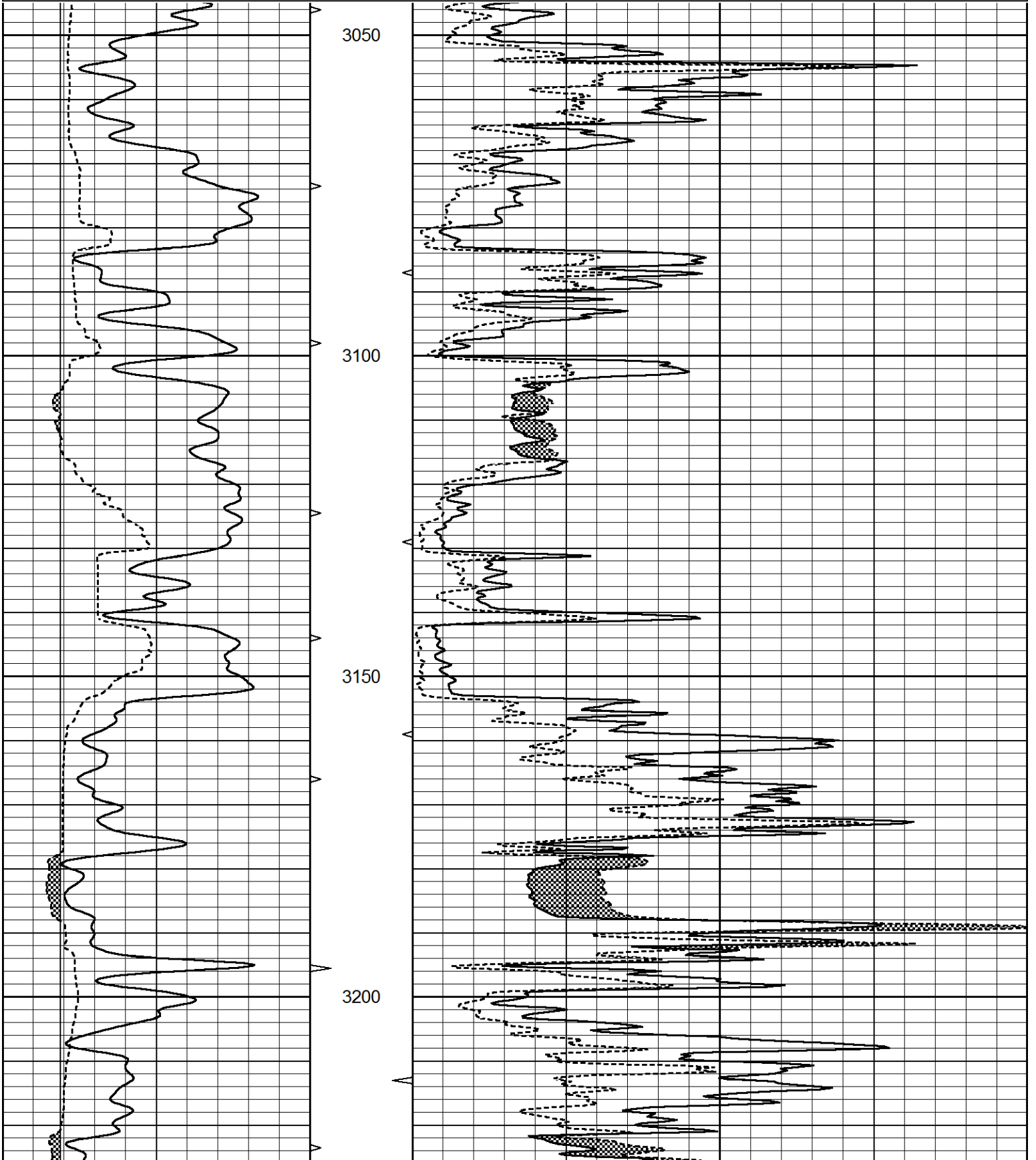
THANK YOU FOR USING ELI WIRELINE SERVICES, HAYS, KS. (785) 628-6395
DIRECTIONS
I 70 & YOCEMENTO - NORTH TO HOMESTEAD RD. - 2 WEST - 1/4 NORTH - WEST INTO

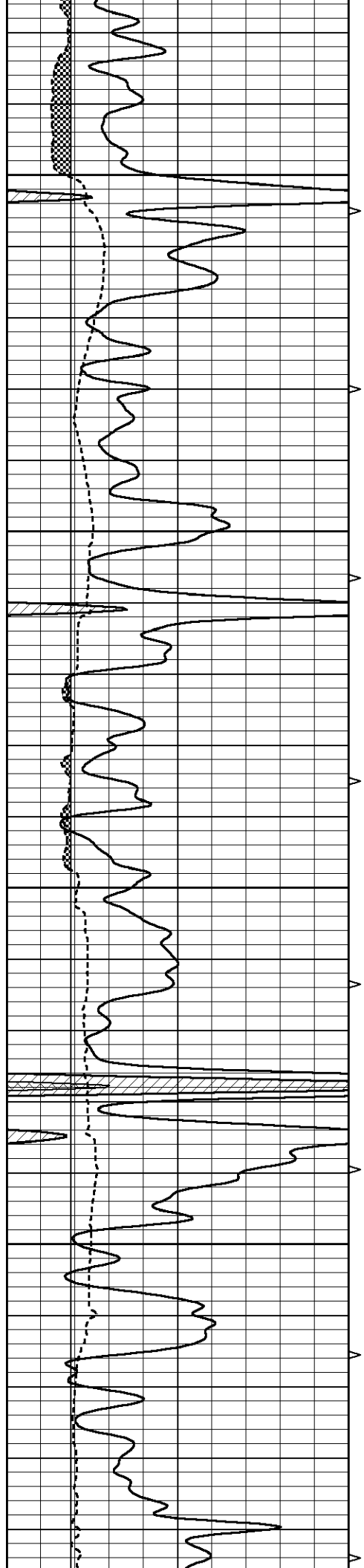


MAIN SECTION

Database File 5636ddn.db
 Dataset Pathname pass6.1
 Presentation Format _micro
 Dataset Creation Sun Aug 01 04:38:06 2021
 Charted by Depth in Feet scaled 1:240

0	GAMMA RAY (GAPI)	150	ABHV	0	MEL1.5 (Ohm-m)	40
6	CALIPER (in)	16	10 (ft3)	0	MEL2.0 (Ohm-m)	40
			TBHV			
			0 (ft3)	10		



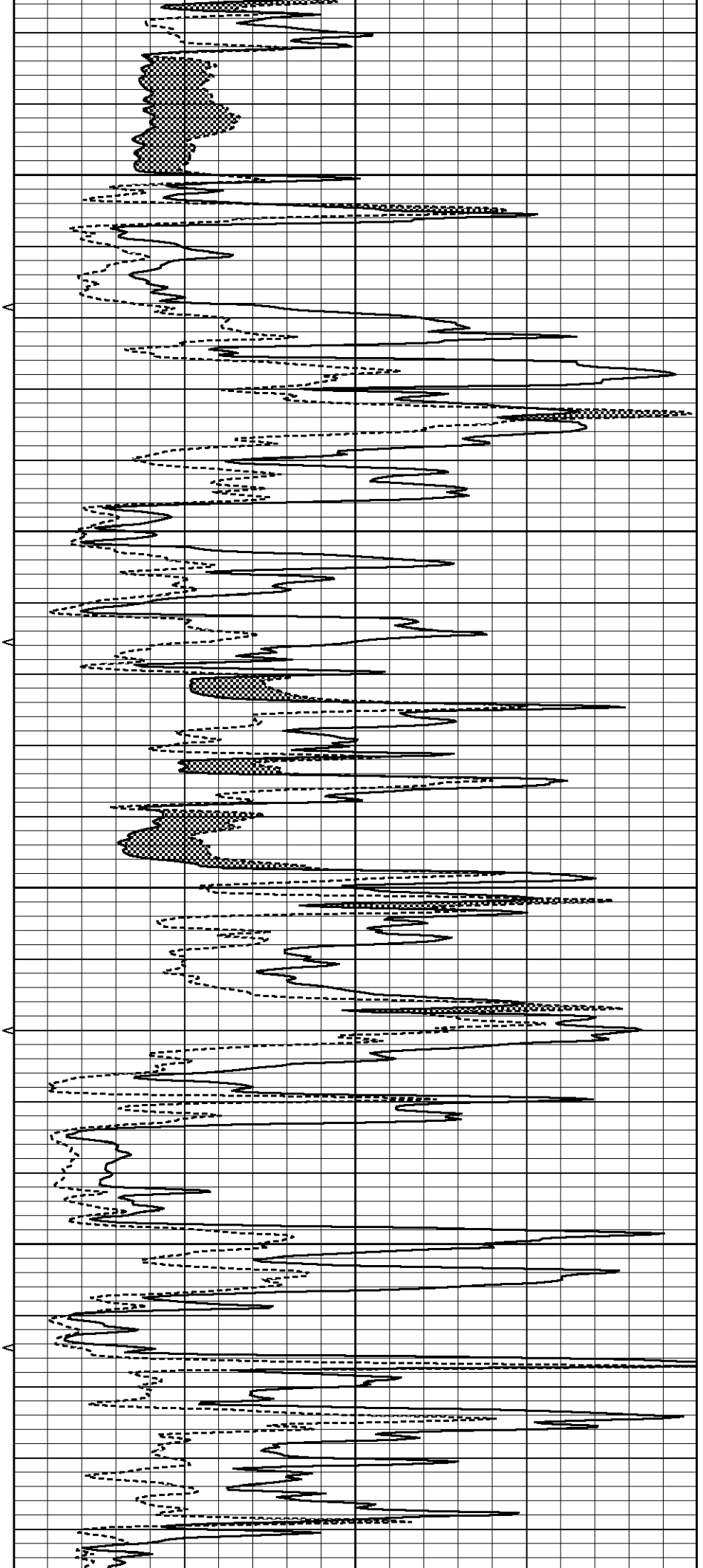


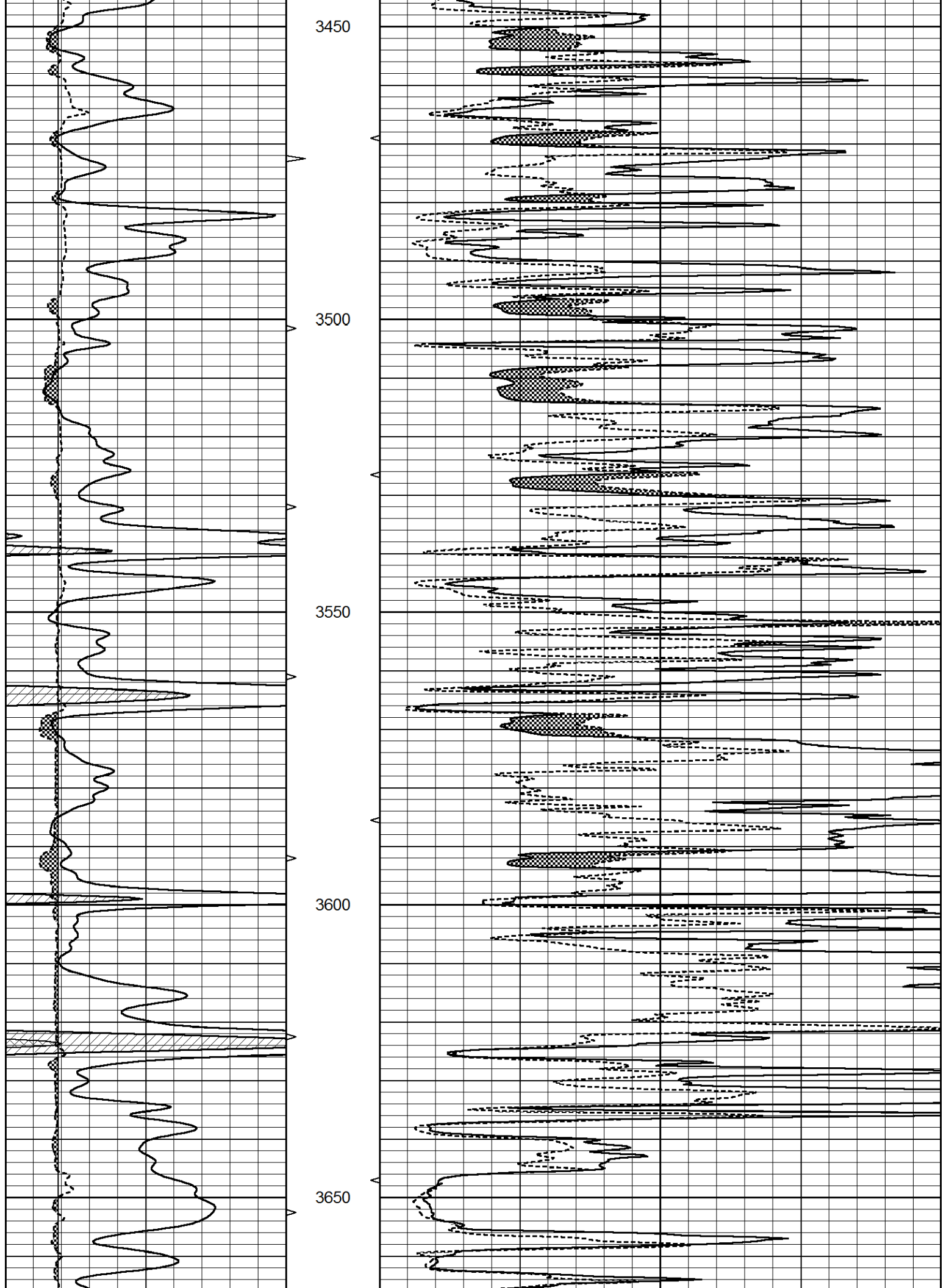
3250

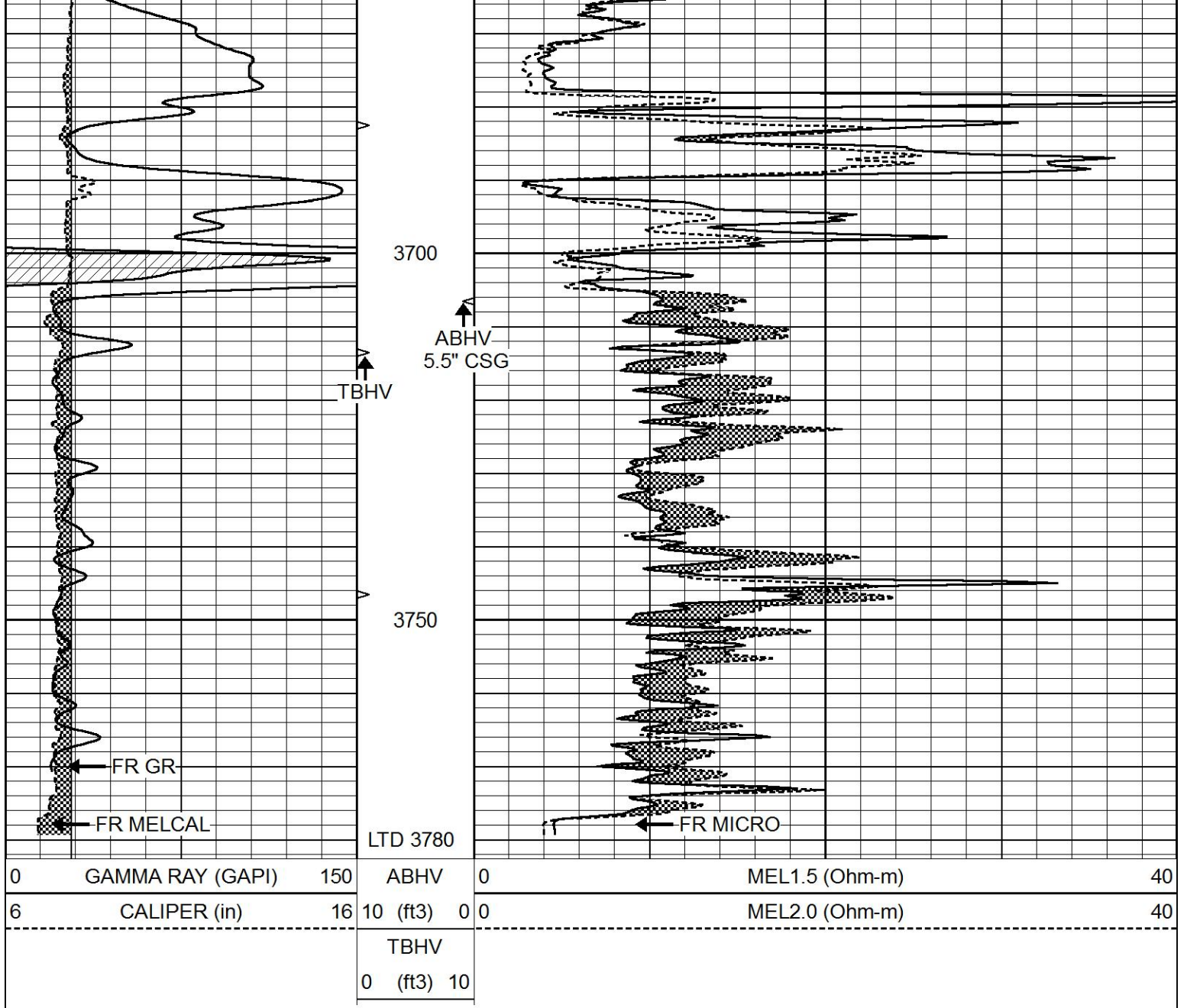
3300

3350

3400



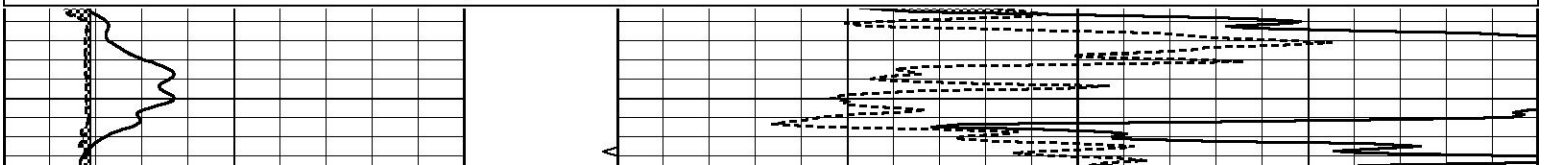


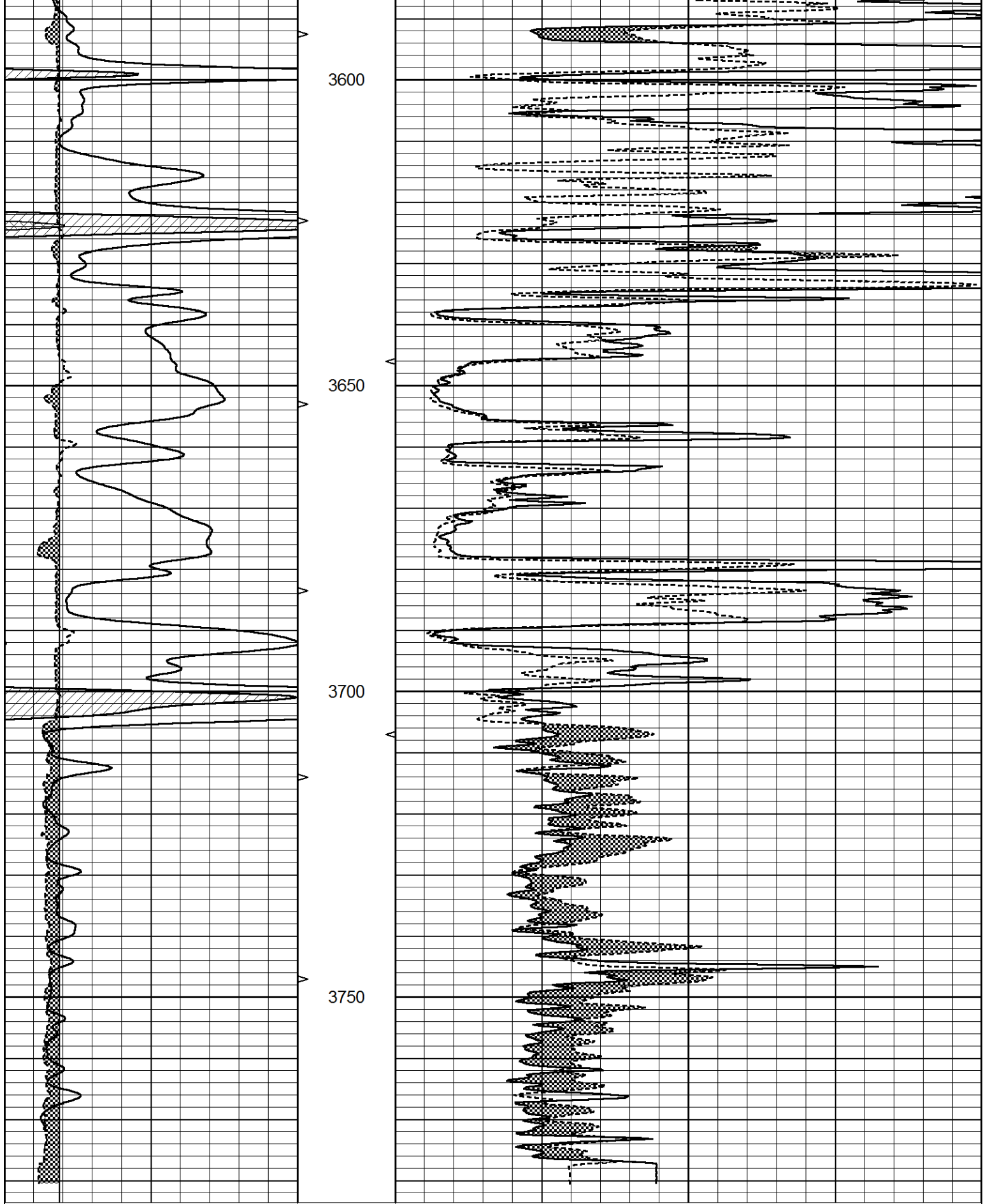


REPEAT SECTION

Database File 5636ddn.db
 Dataset Pathname pass5.1
 Presentation Format _micro
 Dataset Creation Sun Aug 01 04:21:36 2021
 Charted by Depth in Feet scaled 1:240

0	GAMMA RAY (GAPI)	150	ABHV	0	MEL1.5 (Ohm-m)	40
6	CALIPER (in)	16	10 (ft3) 0	0	MEL2.0 (Ohm-m)	40
			TBHV			
			0 (ft3) 10			





3600

3650

3700

3750

0	GAMMA RAY (GAPI)	150	ABHV	0	MEL1.5 (Ohm-m)	40
6	CALIPER (in)	16	10 (ft3)	0	MEL2.0 (Ohm-m)	40
			TBHV			
			0 (ft3)	10		

Calibration Report

Database File 5636ddn.db
 Dataset Pathname pass5.1
 Dataset Creation Sun Aug 01 04:21:36 2021

MICRO_USR Calibration Report

Serial Number: 070910
 Tool Model: ProbeL
 Performed: Thu Jun 10 10:36:57 2021

Caliper Calibration:	Gain=7.192	Offset=2.802
	Low Cal	High Cal
References	8.000	14.000
Readings	0.723	1.557

1.5" Calibration:	Gain=50.000	Offset=-0.567
	Low Cal	High Cal
References	0.000	20.000
Readings	0.004	1.335

2" Calibration:	Gain=85.000	Offset=-2.400
	Low Cal	High Cal
References	0.000	20.000
Readings	0.004	1.029

Microlog Calibration Report

Serial-Model:	070910-ProbeL
Performed:	(Not Performed)

	Readings			References			Results	
	Zero	Cal		Zero	Cal		m	b
Normal	0.0000	1.0000	V	0.0000	1.0000	Ohm-m	1.0000	0.0000
Inverse	0.0000	1.0000	V	0.0000	1.0000	Ohm-m	1.0000	0.0000
Caliper	0.0000	1.0000	V	0.0000	1.0000	in	1.0000	0.0000

Gamma Ray Calibration Report

Serial Number: 070558
 Tool Model: Probe1
 Performed: Fri Oct 30 21:32:56 2020

Calibrator Value: 1.0 GAPI

Background Reading: 0.0 cps
 Calibrator Reading: 1.0 cps

Sensitivity: 0.2700 GAPI/cps