



**COMPENSATED
DENSITY/NEUTRON
LOG**

Company	MUSTANG ENERGY	Company	MUSTANG ENERGY
Well	GARY #3	Well	GARY #3
Field	STAR	Field	STAR
County	ELLIS	County	ELLIS
State	KANSAS	State	KANSAS
Location:	1830' FSL & 1175' FEL	API # :	15-051-27007-0000
Permanent Datum	GROUND LEVEL	Elevation	2131
Log Measured From	KELLY BUSHING 7' A.G.L	K.B:	2138
Drilling Measured From	KELLY BUSHING	D.F:	2136
		G.L:	2131
	SEC 31 TWP 11S RGE 19W		
Date	8/1/21		
Run Number	ONE		
Depth Driller	3780		
Depth Logger	3780		
Bottom Logged Interval	3756		
Top Log Interval	3050		
Casing Driller	8 5/8" @ 214'		
Casing Logger	214		
Bit Size	7 7/8		
Type Fluid in Hole	CHEMICAL MUD	CHLORIDES	4000 PPM
Density / Viscosity	9.3/51		
pH / Fluid Loss	9.5/8.8		
Source of Sample	FLOWLINE		
Rm @ Meas. Temp	.65 @ 80F		
Rmf @ Meas. Temp	.48 @ 80F		
Rmc @ Meas. Temp	.78 @ 80F		
Source of Rmf / Rmc	MEASUREMENT		
Rm @ BHT	.45 @ 114F		
Time Circulation Stopped	2 HOURS		
Time Logger on Bottom	////		
Maximum Recorded Temperature	114F		
Equipment Number	3802		
Location	HAYS, KANSAS		
Recorded By	JASON CAPPELLUCCI		
Witnessed By	CAMERON BRIN		

<<< Fold Here >>>

All interpretations are opinions based on inferences from electrical or other measurements and we cannot and do not guarantee the accuracy or correctness of any interpretation, and we shall not, except in the case of gross or willful negligence on our part, be liable or responsible for any loss, costs, damages, or expenses incurred or sustained by anyone resulting from any interpretation made by any of our officers, agents or employees. These interpretations are also subject to our general terms and conditions set out in our current Price Schedule.

Comments

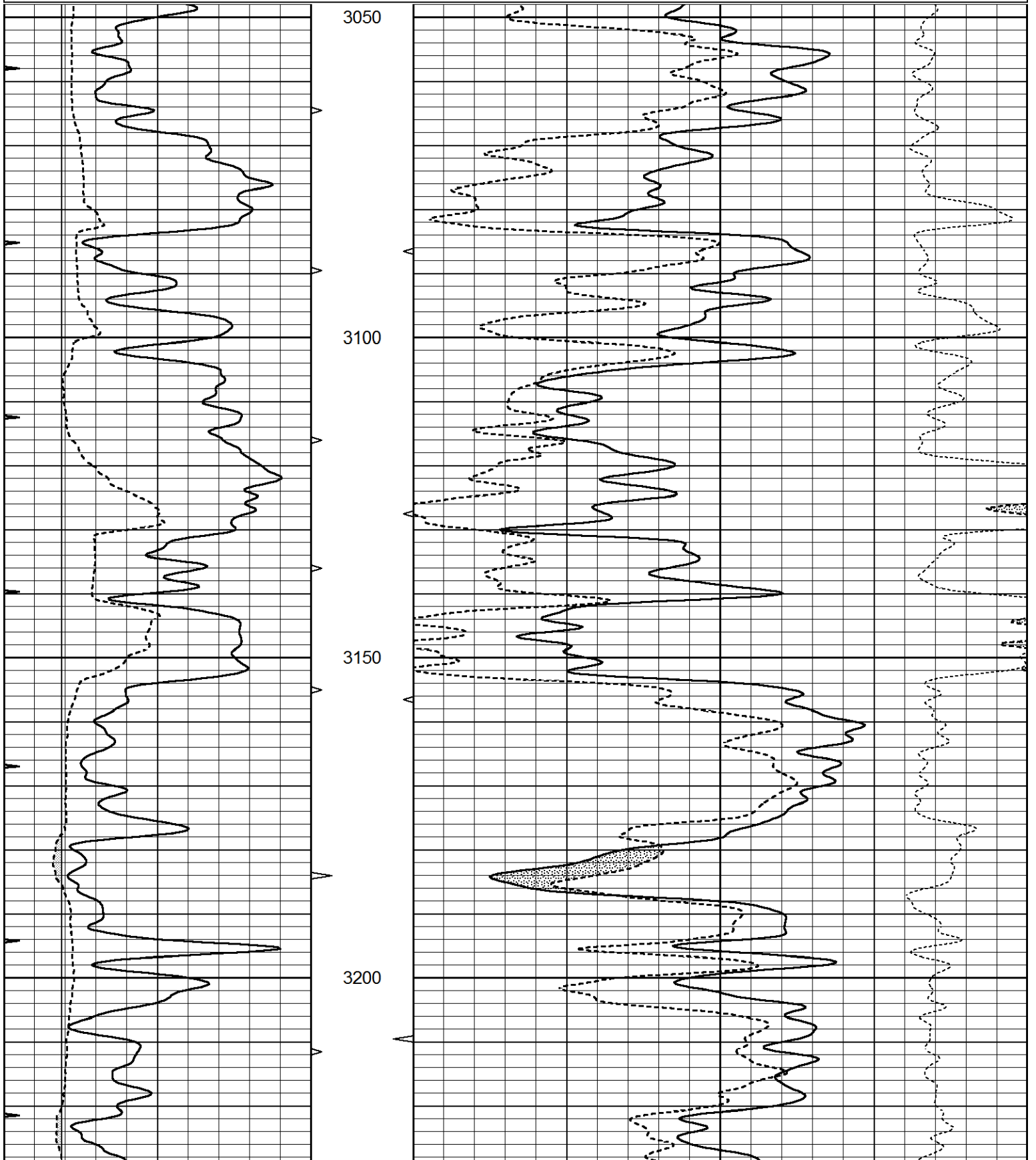
THANK YOU FOR USING ELI WIRELINE SERVICES, HAYS, KS. (785) 628-6395
DIRECTIONS
I 70 & YOCEMENTO - NORTH TO HOMESTEAD RD. - 2 WEST - 1/4 NORTH - WEST INTO

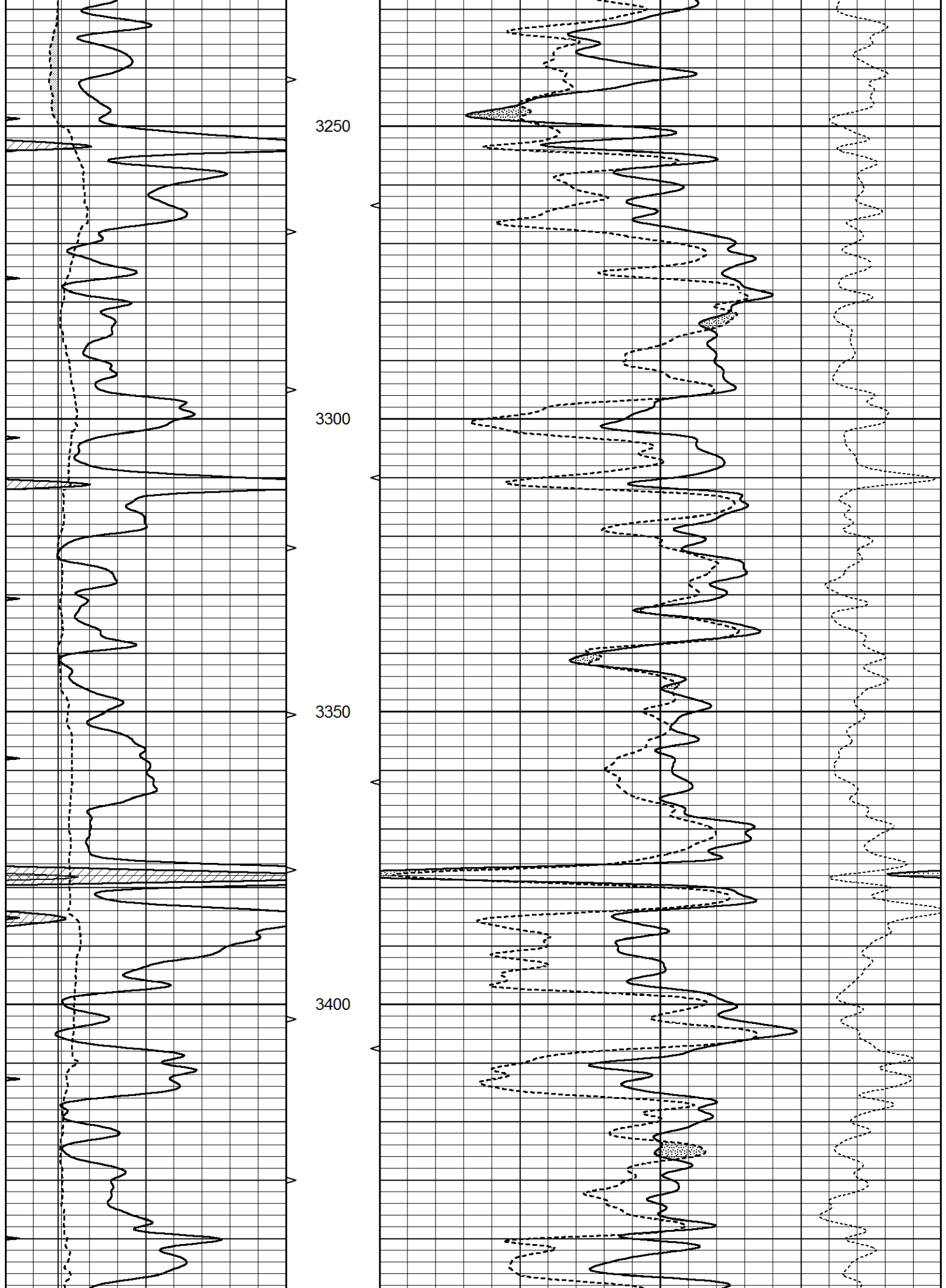


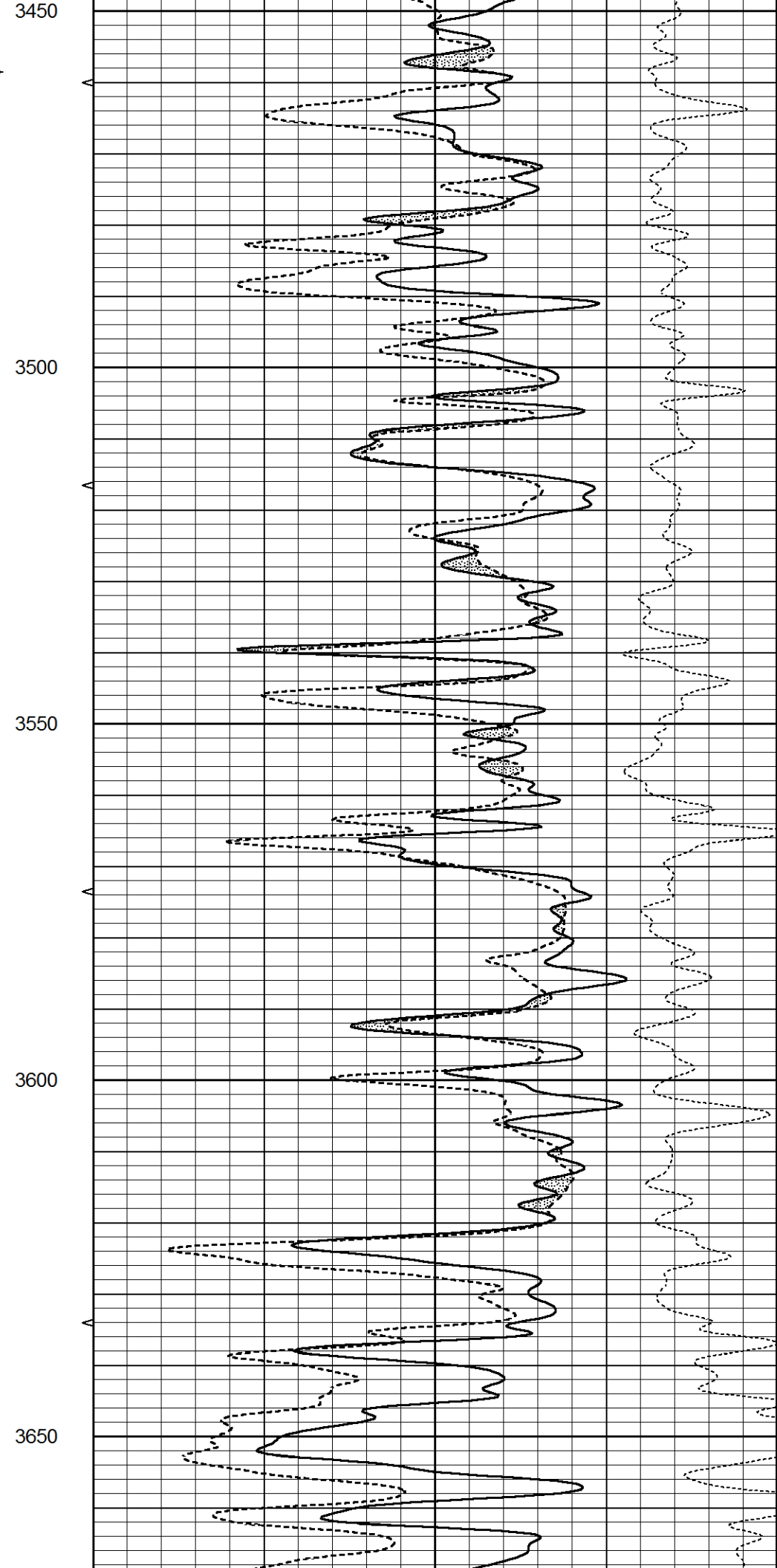
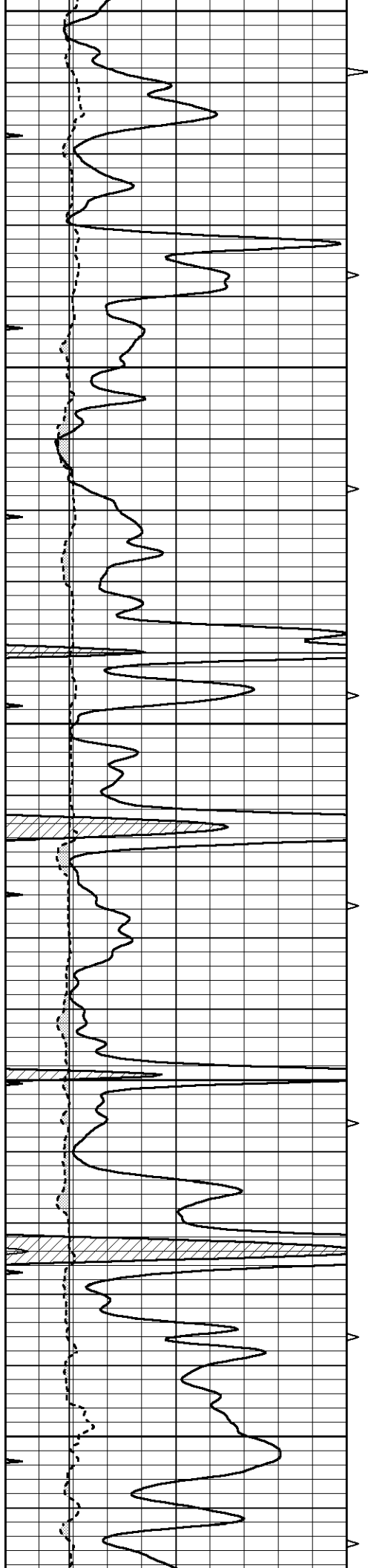
MAIN SECTION

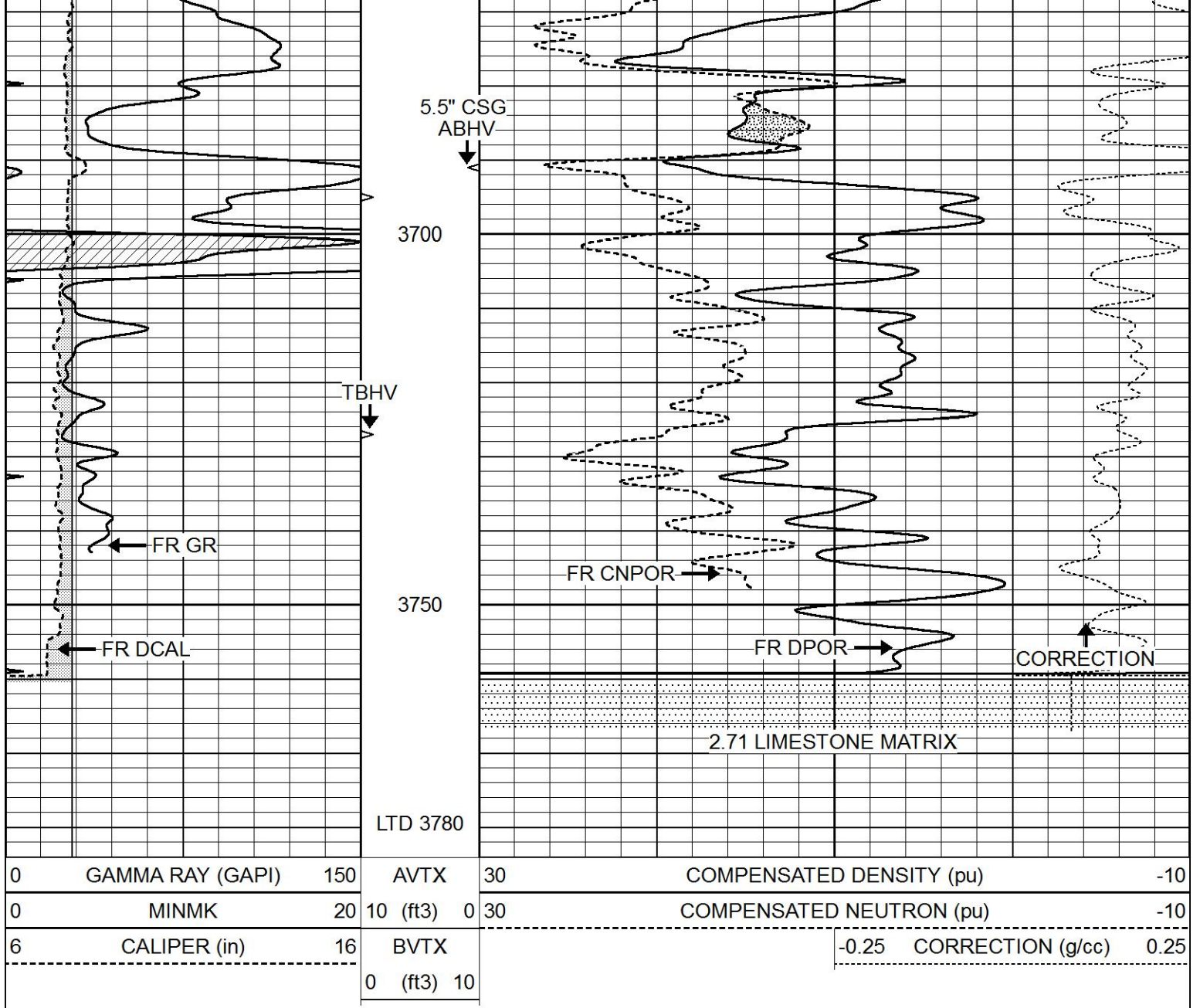
Database File 5636ddn.db
 Dataset Pathname pass3.1
 Presentation Format _den_neu
 Dataset Creation Sun Aug 01 02:28:27 2021
 Charted by Depth in Feet scaled 1:240

0	GAMMA RAY (GAPI)	150	AVTX	30	COMPENSATED DENSITY (pu)	-10
0	MINMK	20	10 (ft3) 0	30	COMPENSATED NEUTRON (pu)	-10
6	CALIPER (in)	16	BVTX		-0.25 CORRECTION (g/cc)	0.25
			0 (ft3) 10			





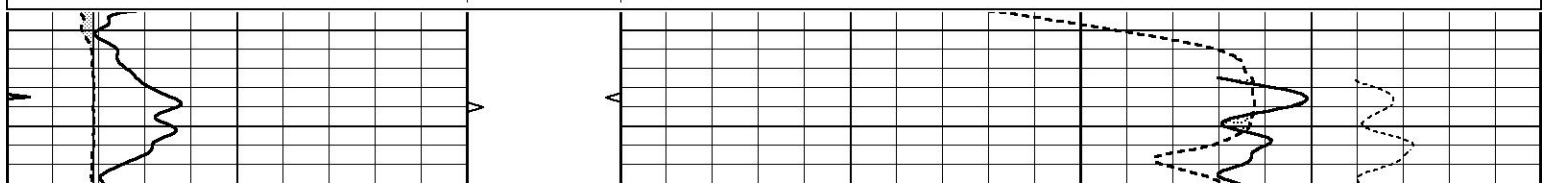


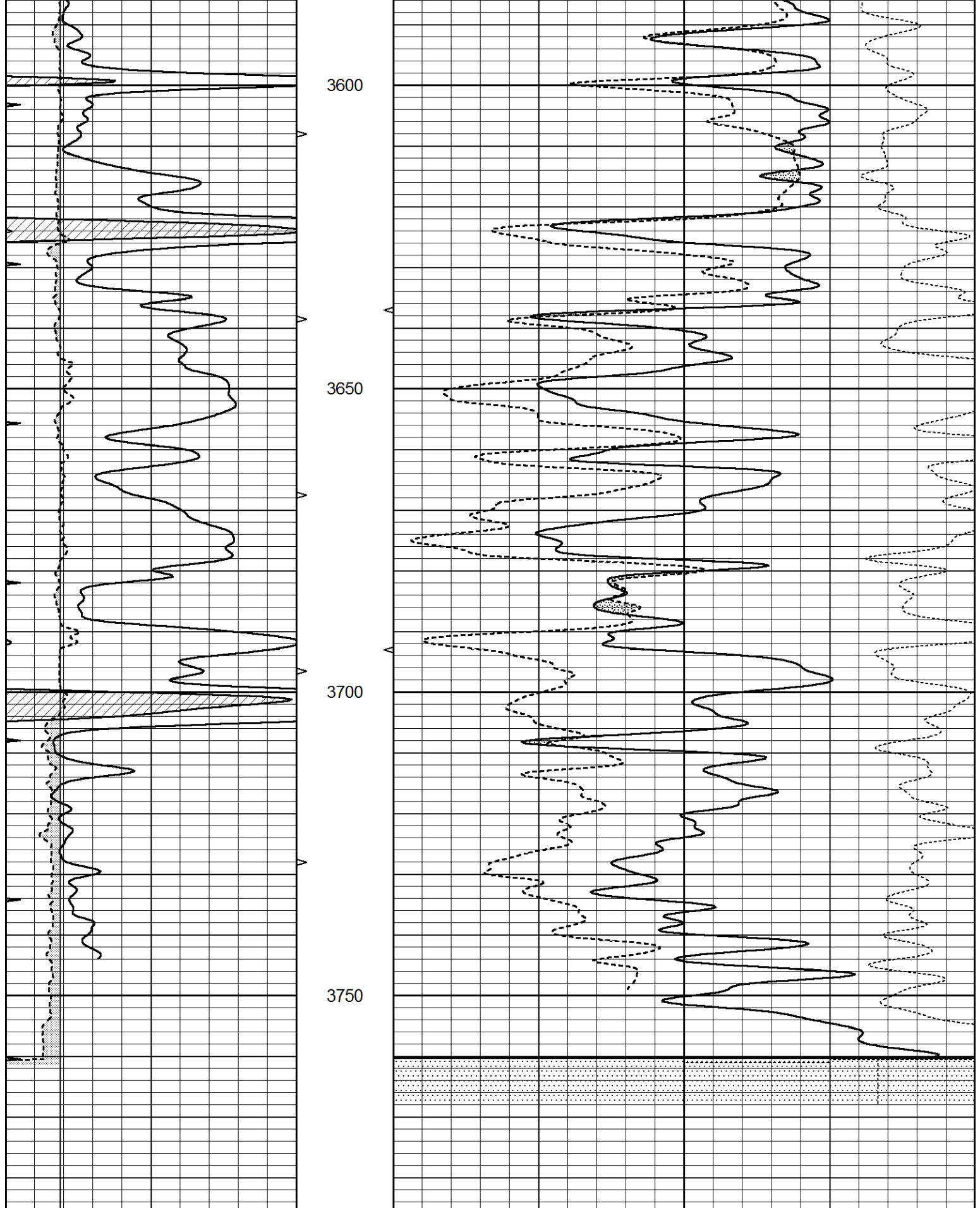


REPEAT SECTION

Database File 5636ddn.db
 Dataset Pathname pass2.2
 Presentation Format _den_neu
 Dataset Creation Sun Aug 01 02:16:23 2021
 Charted by Depth in Feet scaled 1:240

0	GAMMA RAY (GAPI)	150	AVTX	30	COMPENSATED DENSITY (pu)	-10
0	MINMK	20	10 (ft3)	0 30	COMPENSATED NEUTRON (pu)	-10
6	CALIPER (in)	16	BVTX		-0.25 CORRECTION (g/cc)	0.25
			0 (ft3)	10		





0	GAMMA RAY (GAPI)	150	AVTX	30	COMPENSATED DENSITY (pu)	-10	
0	MINMK	20	10 (ft3)	0 30	COMPENSATED NEUTRON (pu)	-10	
6	CALIPER (in)	16	BVTX		-0.25	CORRECTION (g/cc)	0.25
			0 (ft3)	10			

Calibration Report

Database File 5636ddn.db
 Dataset Pathname pass2.2
 Dataset Creation Sun Aug 01 02:16:23 2021

Dual Induction Calibration Report

Serial-Model: FW1410-55-Probe
 Surface Cal Performed: Tue Feb 19 11:44:18 2019
 Downhole Cal Performed: Tue Feb 19 11:44:24 2019
 After Survey Verification Performed: Tue Feb 19 11:44:27 2019

Surface Calibration

Loop:	Readings			References			Results	
	Air	Loop		Air	Loop		m	b
Deep	0.011	0.656	V	1.000	400.000	mmho/m	618.595	-5.524
Medium	-0.000	0.731	V	1.000	464.000	mmho/m	632.856	1.197
Internal:	Zero	Cal		Zero	Cal		m	b
Deep	0.007	0.649	V	0.000	400.000	mmho/m	623.784	-4.595
Medium	0.004	0.743	V	0.000	464.000	mmho/m	627.284	-2.251

Downhole Calibration

	Readings			References			Results	
	Zero	Cal		Zero	Cal		m'	b'
Deep	-0.824	395.917	mmho/m	-0.976	397.550	mmho/m	1.004	-0.149
Medium	3.565	471.327	mmho/m	3.468	471.590	mmho/m	1.001	-0.099
LL3		7.503	V		1500.000	Ohm-m		
		0.001	V		20.000	Ohm-m		
		-7.481	V		3745.000	mmho-m		

After Survey Verification

	Readings			Targets			Results	
	Zero	Cal		Zero	Cal		m'	b'
Deep	0.000	0.000	mmho/m	-0.824	395.917	mmho/m	1.000	0.000
Medium	0.000	0.000	mmho/m	3.565	471.327	mmho/m	1.000	0.000
LL3		0.000	Ohm-m		1500.000	Ohm-m		
		0.000	Ohm-m		20.000	Ohm-m		
		0.000	mmho-m		3745.000	mmho-m		

Litho Density Calibration Report

Serial: 140703
 Model: V4_10P
 Source Number: 74GBq-19

Master Calibration

Performed: Wed Dec 02 12:04:44 2020

	Background	Aluminum	Magnesium	
Window 1	595.38	5386.50	23898.92	cps
Window 2	52.78	1248.21	5993.75	cps
Window 4	251.36	1200.30	5155.55	cps
Window 5	545.15	9066.30	17240.12	cps
Window 6	43.35	1491.73	2929.24	cps
Window 8	258.76	2917.82	5450.26	cps
Bulk Density	-	2.6020	1.6830	g/cc
Pe	-	3.0000	2.5070	b/e

LS Alpha: : -1.8726
 LS Beta: : 127345.0723

SS Alpha: : -0.7656
 SS Beta: : 20293.3834

LS CPE: : 1.0742
 SS CPE: : 1.5427

Before Survey Background Counts Verification

Performed: Wed Dec 31 18:00:00 1969

Window 1	0.00	cps
Window 2	0.00	cps
Window 4	0.00	cps
Window 5	0.00	cps
Window 6	0.00	cps
Window 8	0.00	cps

After Survey Background Counts Verification

Performed: Wed Dec 31 18:00:00 1969

Window 1	0.00	cps
Window 2	0.00	cps
Window 4	0.00	cps
Window 5	0.00	cps
Window 6	0.00	cps
Window 8	0.00	cps

Lithodensity Caliper Calibration

Performed: Wed Dec 02 12:04:44 2020

Results		Readings		References (in)		Gain	Offset
Low	High	Low	High				
8005.3	11087.2	8.0	14.0			0.0	-7.5

Before Survey Caliper Verification

Performed:

	Reference	Reading
Caliper (in)	_____	_____

After Survey Caliper Verification

Performed:

	Reference	Reading
Caliper (in)	_____	_____

Compensated Neutron Calibration Report

Serial Number: 080621PMC
 Tool Model: NABORS

PRE-SURVEY VERIFICATION

Detector	Readings	Measured	Target
Short Space	cps		
Long Space	cps	pu	pu

POST-SURVEY VERIFICATION

Detector	Readings	Measured	Target
Short Space	cps		
Long Space	cps	pu	pu

Gamma Ray Calibration Report

Serial Number: 7
Tool Model: Probe1
Performed: Tue Jan 19 17:50:08 2021

Calibrator Value: 1.0 GAPI

Background Reading: 0.0 cps

Calibrator Reading: 1.0 cps

Sensitivity: 0.5300 GAPI/cps