



DUAL INDUCTION LOG

Company TREK AEC, LLC.
 Well STAATZ #2
 Field GREEN GARDEN
 County ELLSWORTH State KANSAS

Location: API #: 15-053-21375-0000
 1445' FSL & 1945' FEL
 SW - SE - NW - SE
 SEC 35 TWP 16S RGE 9W
 Permanent Datum GROUND LEVEL Elevation 1739
 Log Measured From KELLY BUSHING 8' A.G.L.
 Drilling Measured From KELLY BUSHING
 Other Services
 CDL/CNL
 MEL/SON
 Elevation
 K.B. 1747
 D.F. 1745
 G.L. 1739

Date	4/27/21
Run Number	ONE
Depth Driller	3330
Depth Logger	3331
Bottom Logged Interval	3329
Top Log Interval	00
Casing Driller	8 5/8"@389'
Casing Logger	389
Bit Size	7 7/8"
Type Fluid in Hole	CHEMICAL MUD
Density / Viscosity	9.4/53
pH / Fluid Loss	9.5/7.2
Source of Sample	FLOWLINE
Rm @ Meas. Temp	.800@90F
Rmf @ Meas. Temp	.600@90F
Rmc @ Meas. Temp	.960@90F
Source of Rmf / Rmc	MEASUREMENT
Rm @ BHT	.656@110F
Time Circulation Stopped	2 HOURS
Time Logger on Bottom	5.45 P.M.
Maximum Recorded Temperature	110F
Equipment Number	922339
Location	HAYS, KANSAS
Recorded By	JEFF LUEBBERS
Witnessed By	DOUG DAVIS

<<< Fold Here >>>

All interpretations are opinions based on inferences from electrical or other measurements and we cannot and do not guarantee the accuracy or correctness of any interpretation, and we shall not, except in the case of gross or willful negligence on our part, be liable or responsible for any loss, costs, damages, or expenses incurred or sustained by anyone resulting from any interpretation made by any of our officers, agents or employees. These interpretations are also subject to our general terms and conditions set out in our current Price Schedule.

15-053-21375-0000 Comments

THANK YOU FOR USING ELI WIRELINE HAYS, KANSAS (785) 628-6395
 DIRECTIONS
 HOLYROOD, KS. (HWY 156 & AVE. T) 8E. ON "AVE. T" TO "12TH RD.", 1N. TO TANK BATTERY, W. & N. INTO

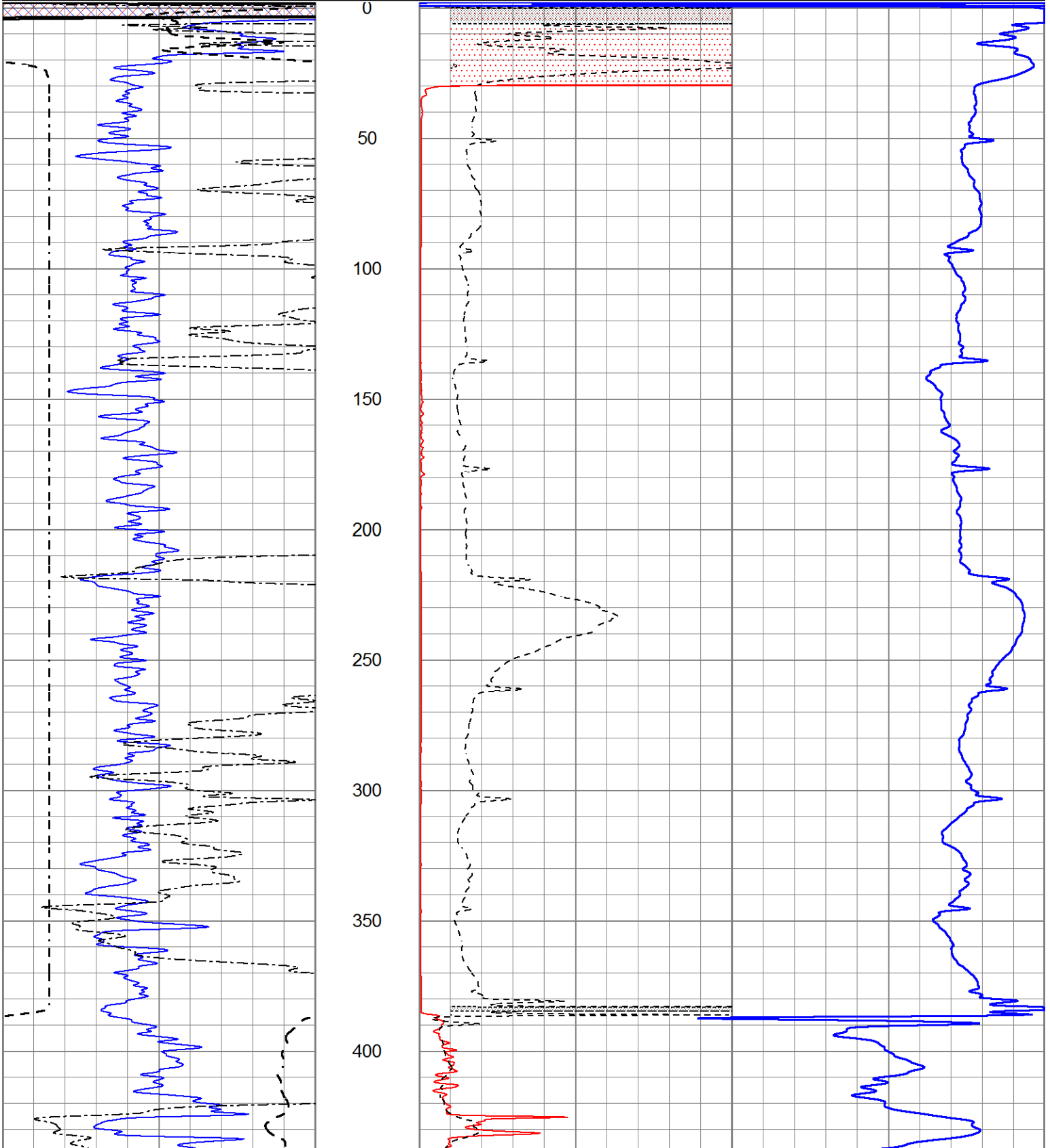


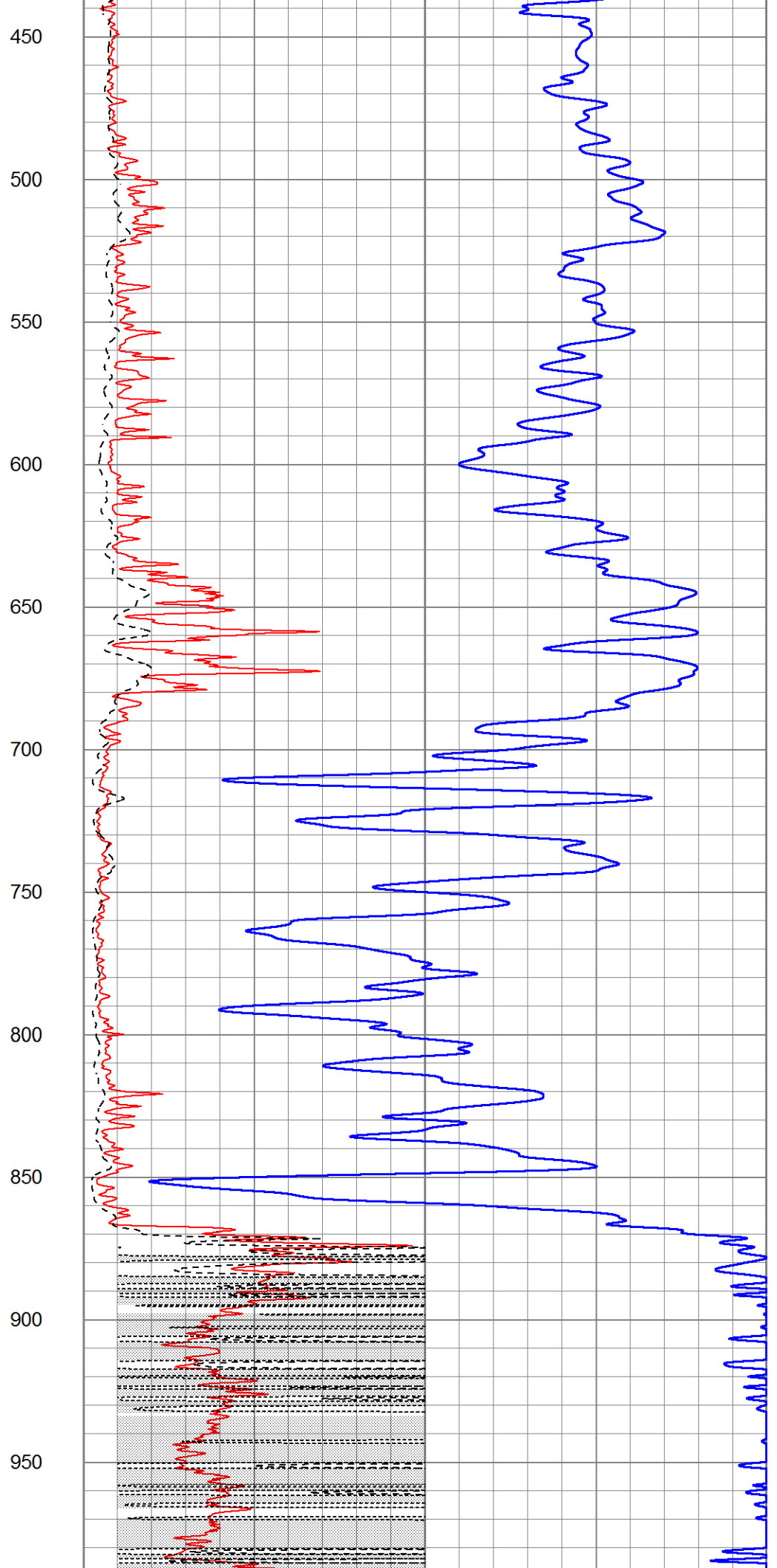
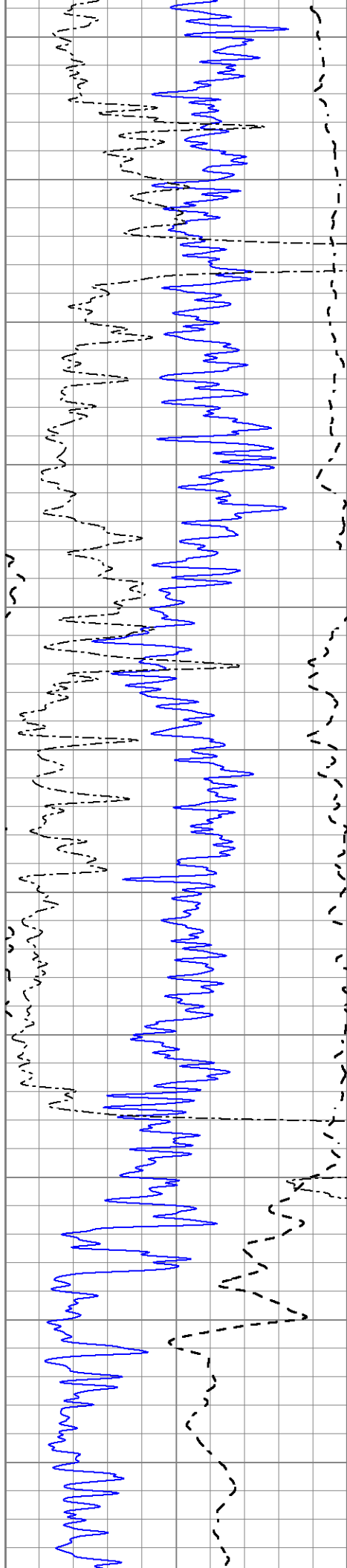
MAIN SECTION

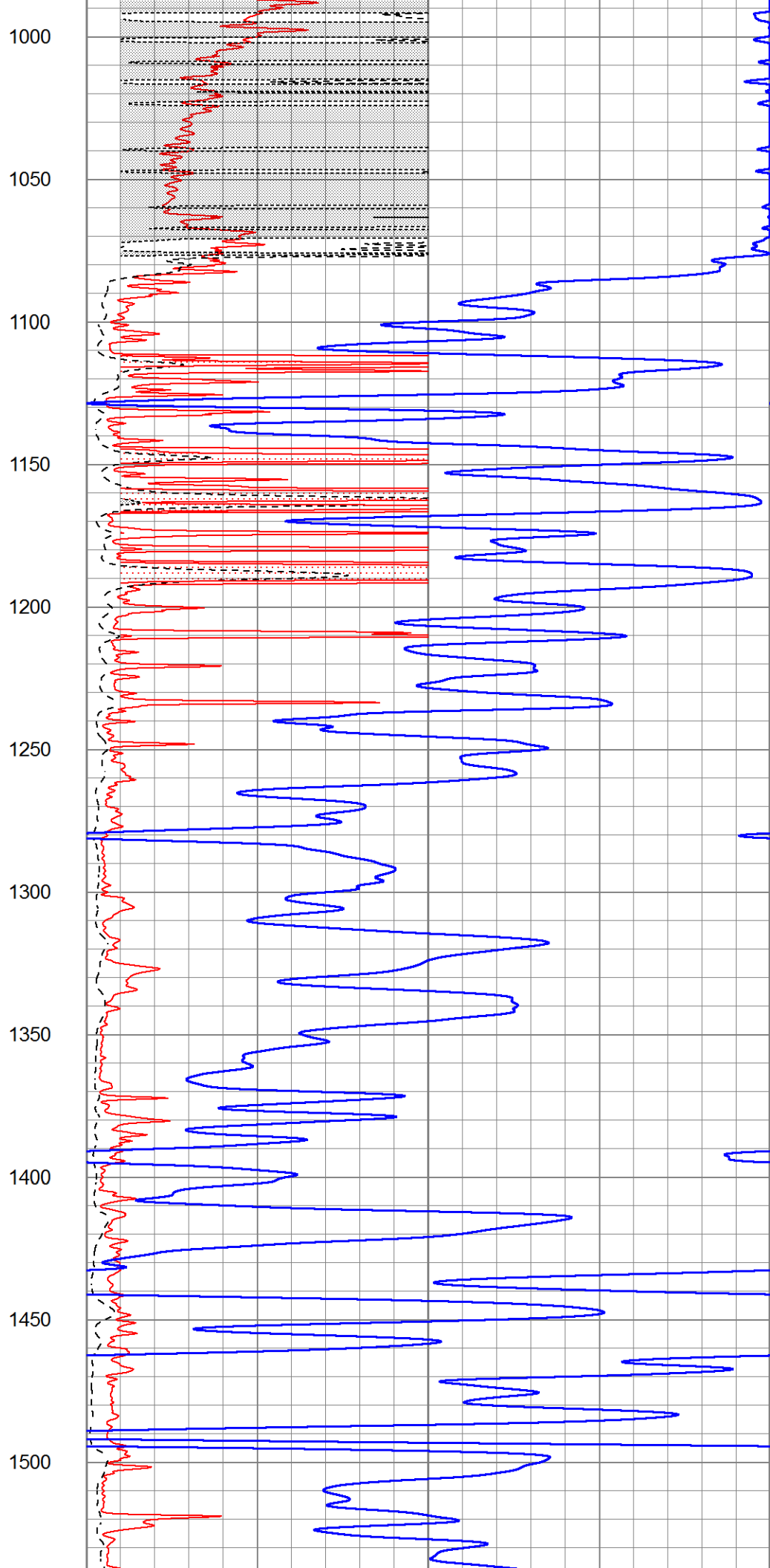
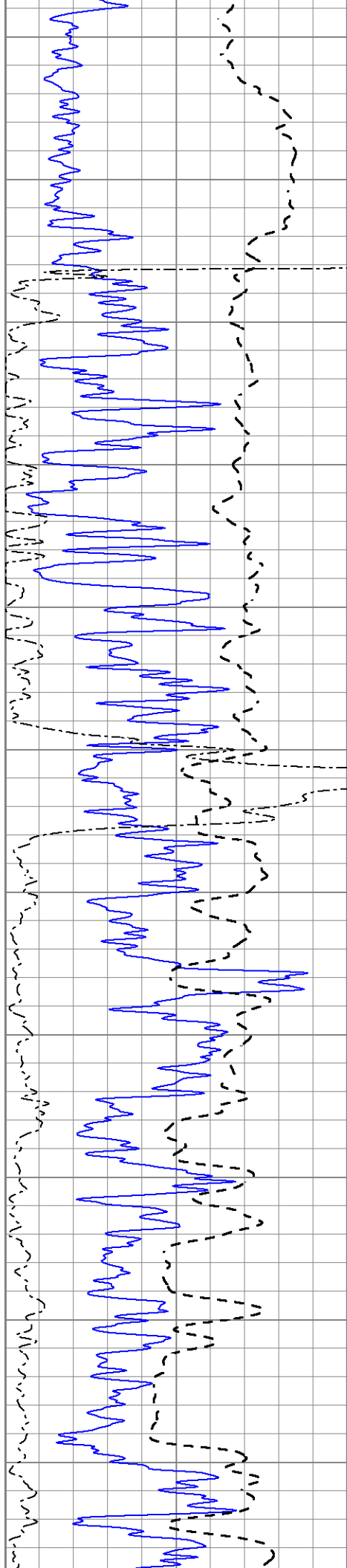
Database File 5268ddn.db
 Dataset Pathname pass3.2M
 Presentation Format dil2
 Dataset Creation Tue Apr 27 19:33:10 2021
 Charted by Depth in Feet scaled 1:600

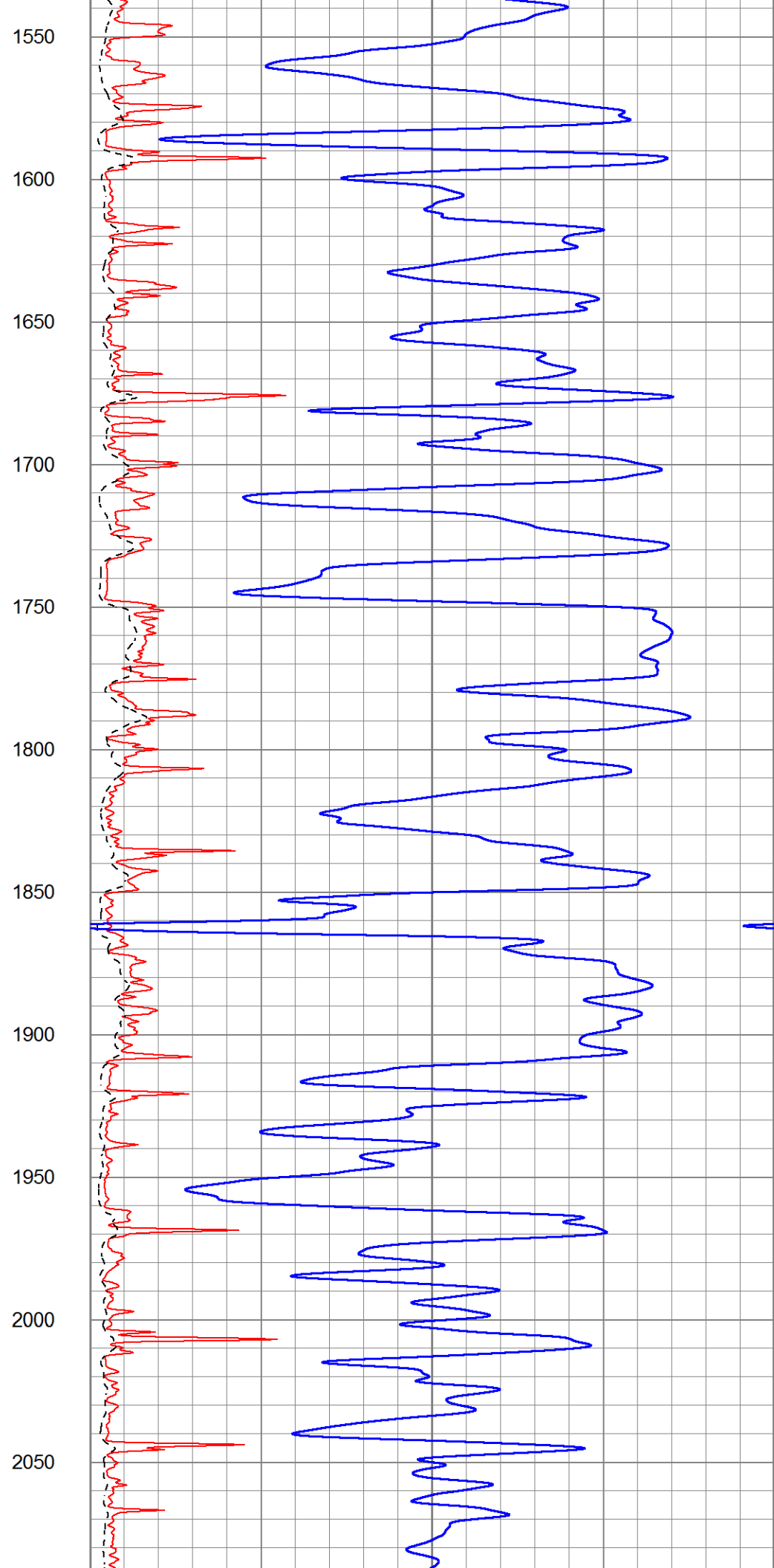
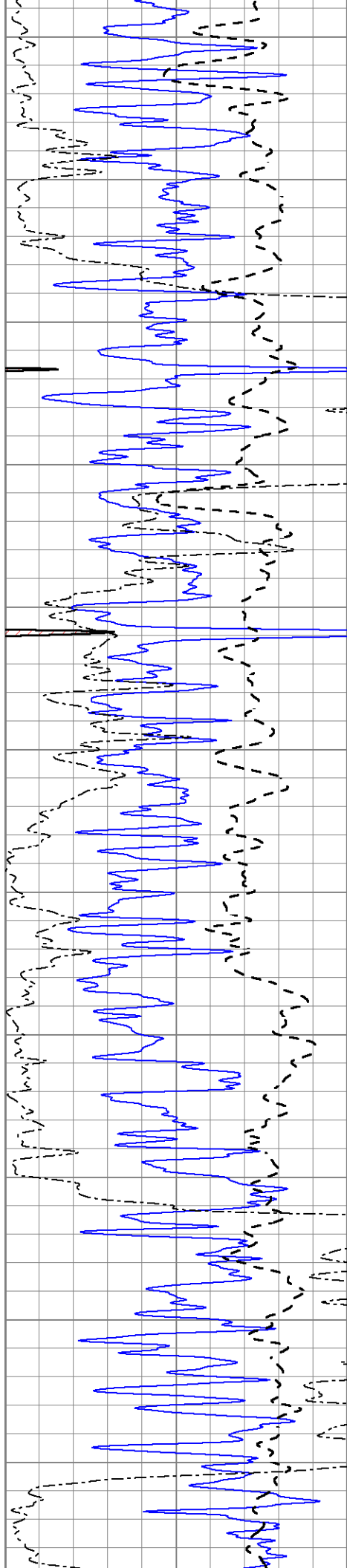
0	Gamma Ray (GAPI)	150
-100	SP (mV)	100
0	RWA (Ohm-m)	1

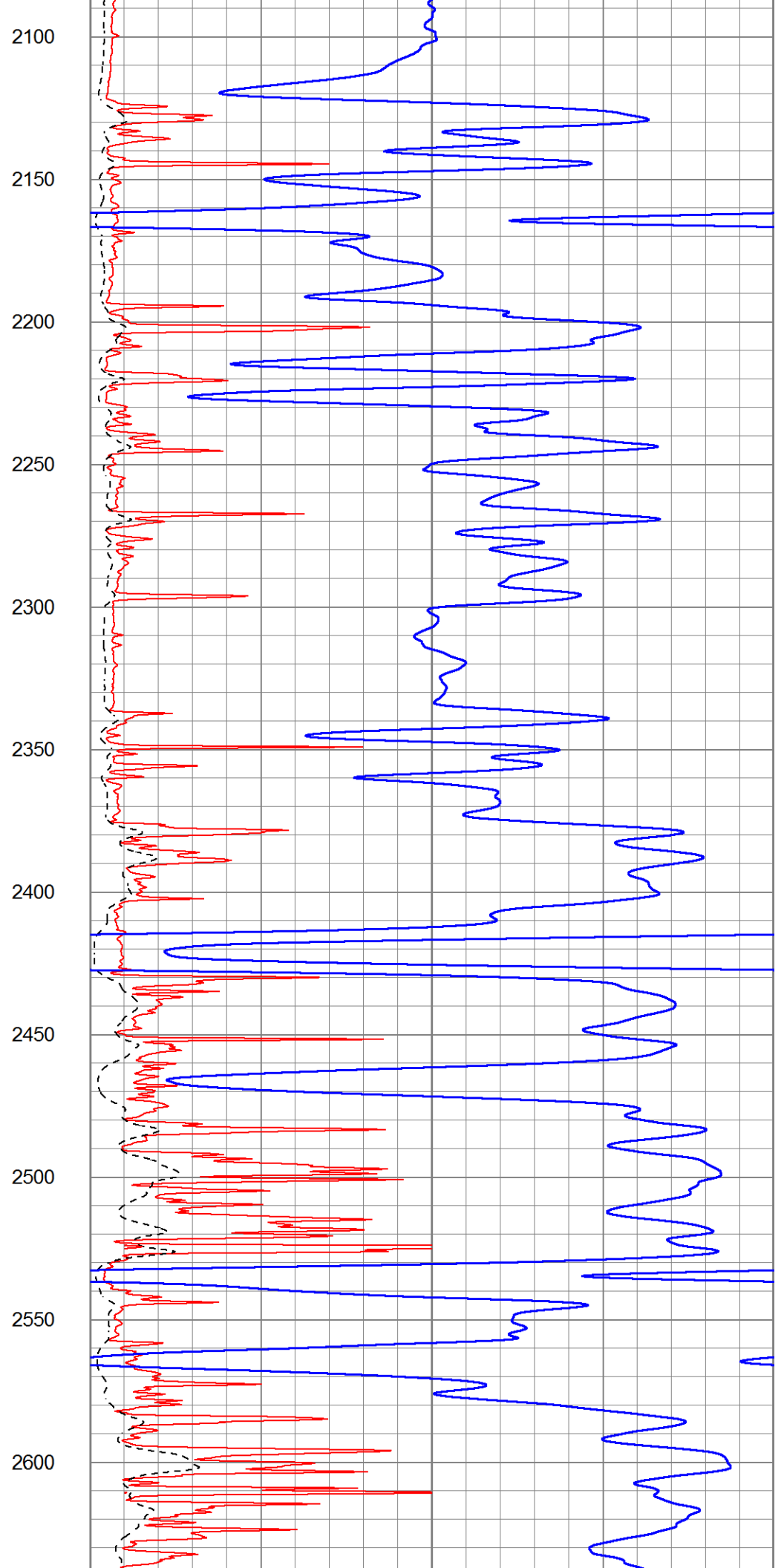
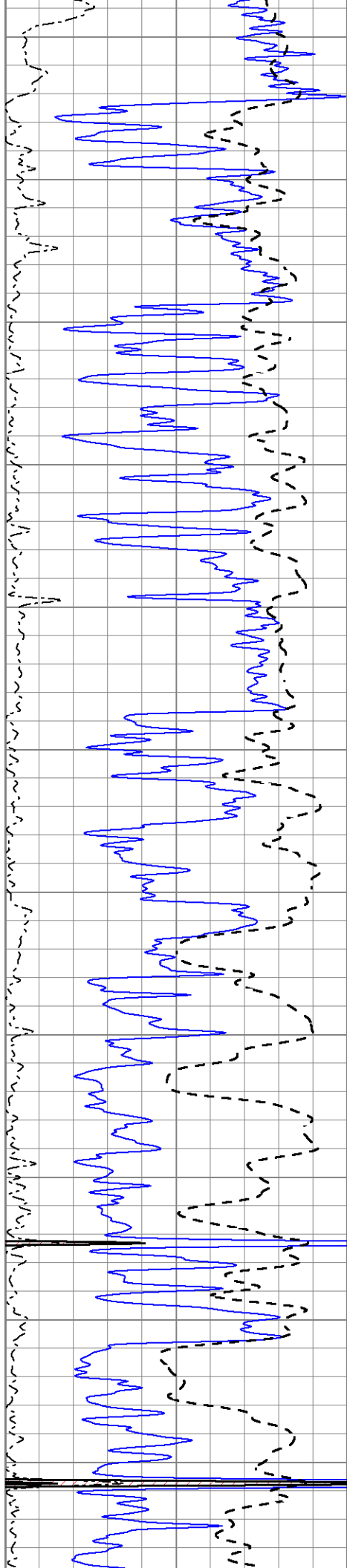
1000	CILD (mmho/m)	0
0	RLL3 (Ohm-m)	50
0	RILD (Ohm-m)	50
50	RILD X10 (Ohm-m)	500
50	RLL3 X10 (Ohm-m)	500

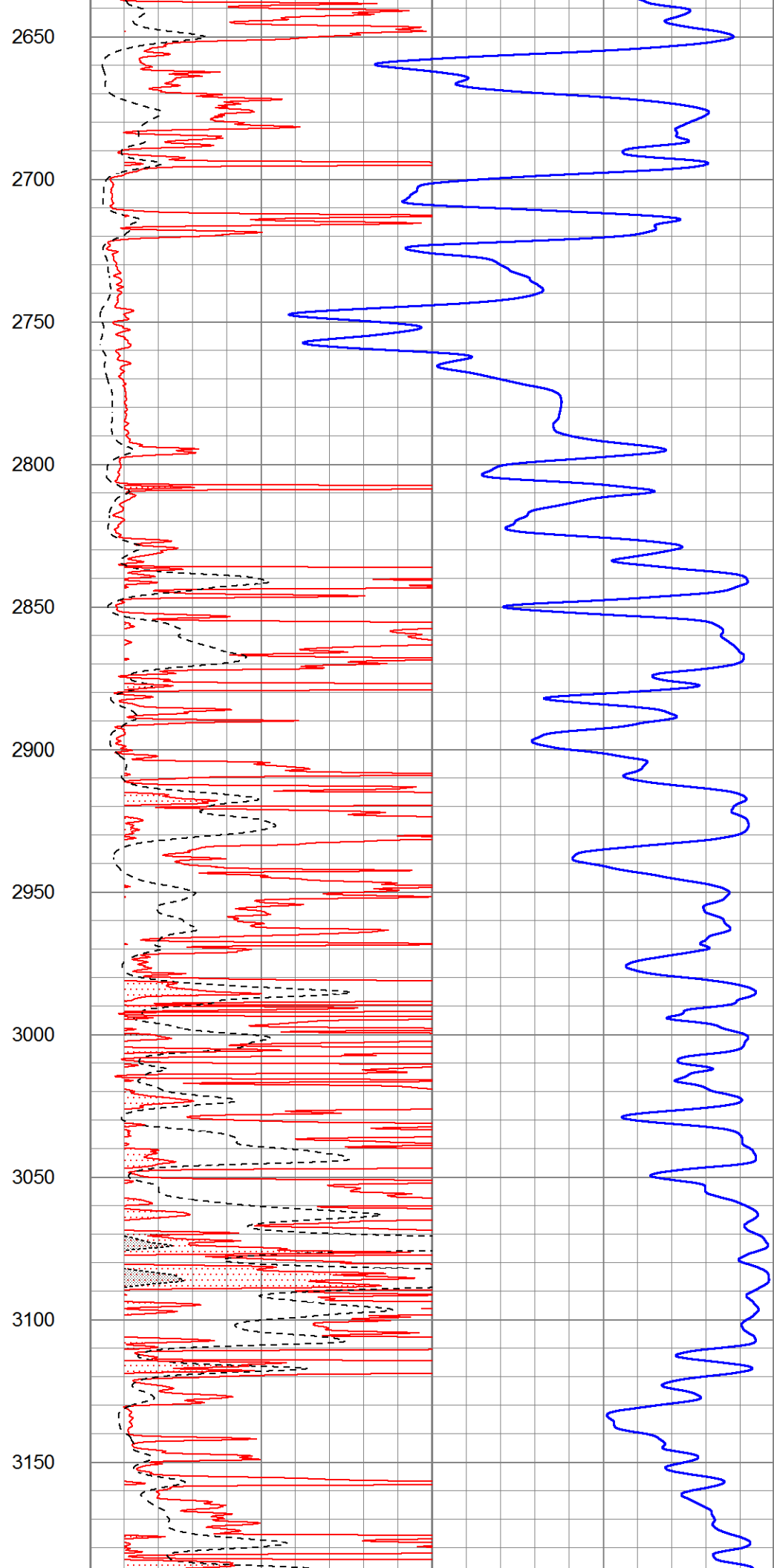
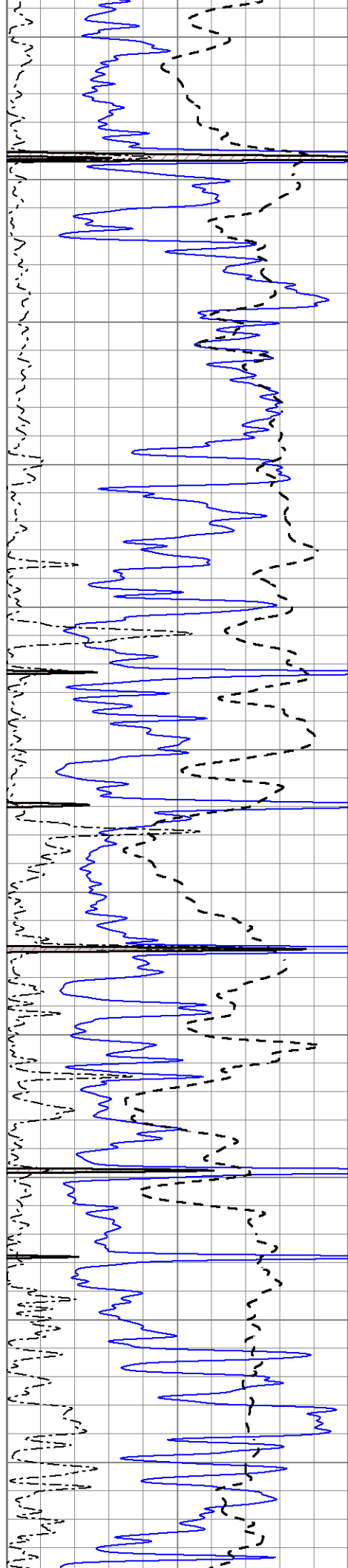


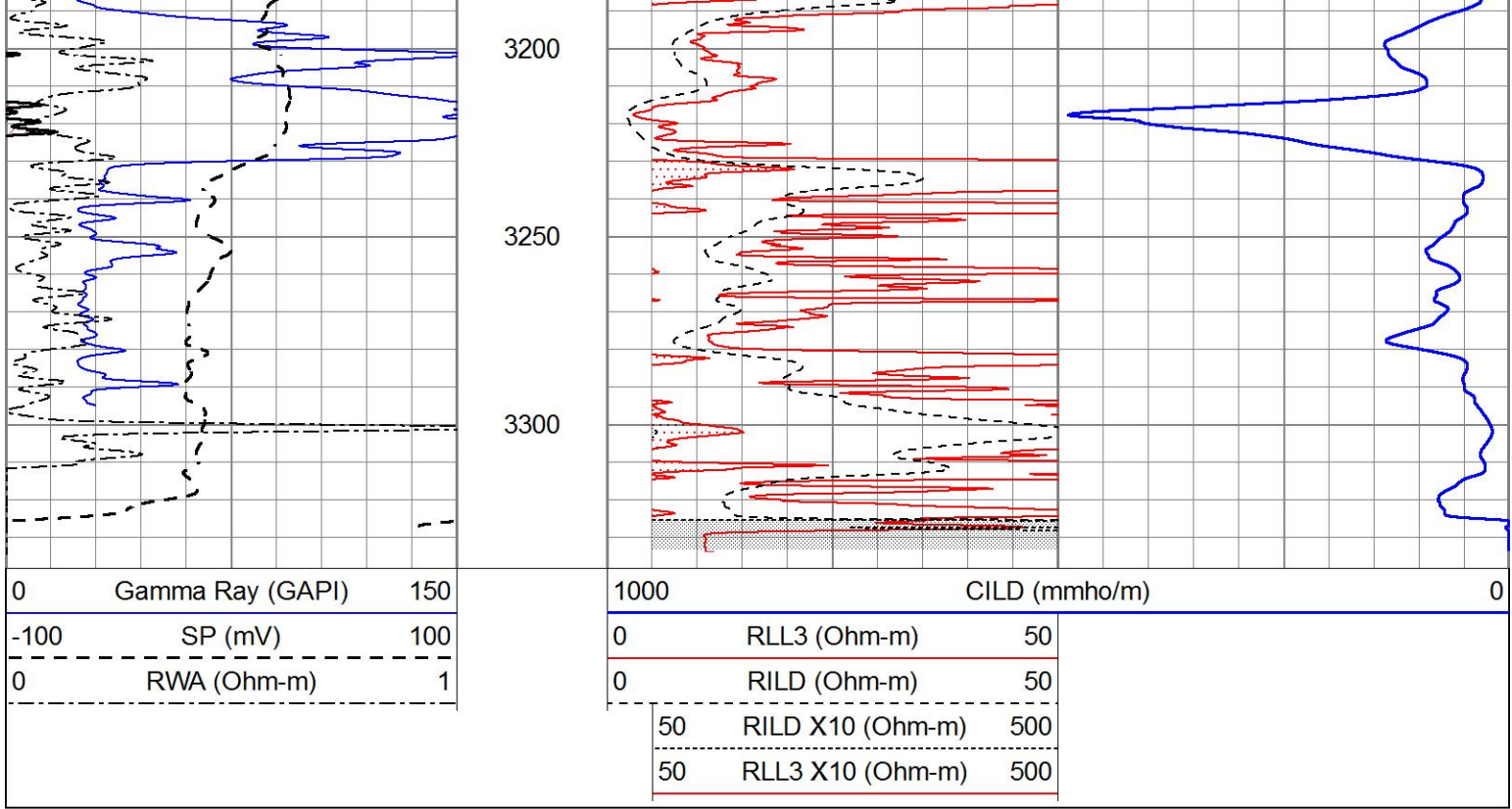








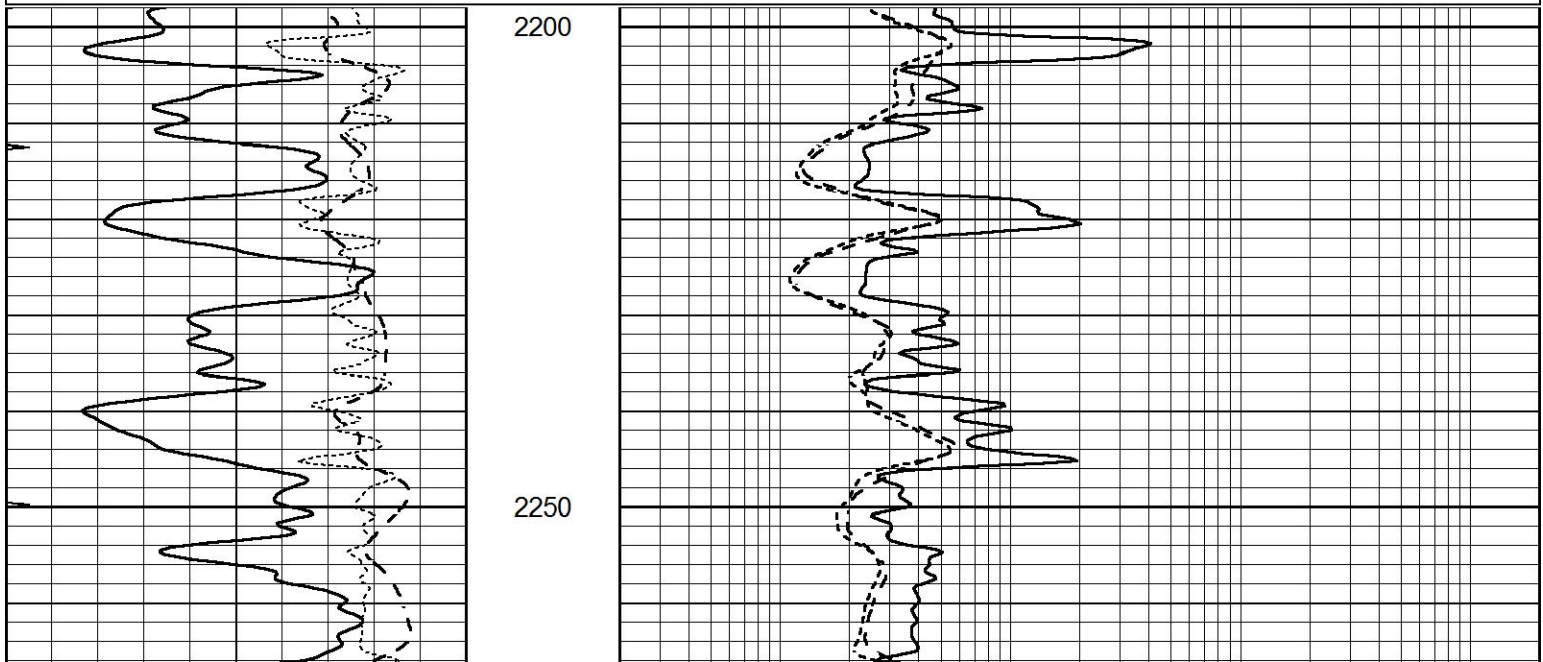


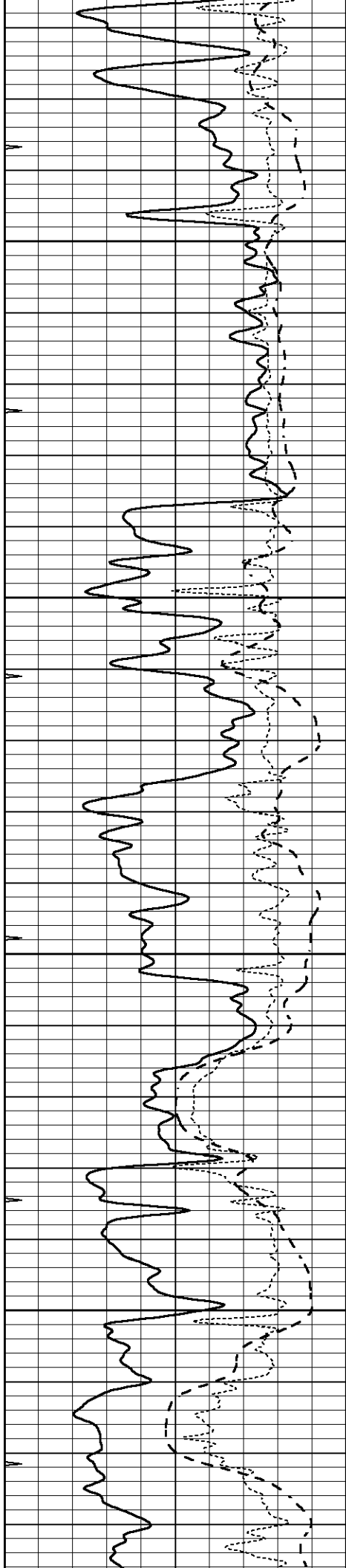


MAIN SECTION

Database File 5268ddn.db
 Dataset Pathname pass3.2M
 Presentation Format _dil
 Dataset Creation Tue Apr 27 19:33:10 2021
 Charted by Depth in Feet scaled 1:240

0	GAMMA RAY (GAPI)	150	0.2	SHALLOW GUARD (Ohm-m)	2000
-100	SP (mV)	100	0.2	DEEP INDUCTION (Ohm-m)	2000
-250	Rxo/Rt	50	0.2	MEDIUM INDUCTION (Ohm-m)	2000
0	MINMK	20			



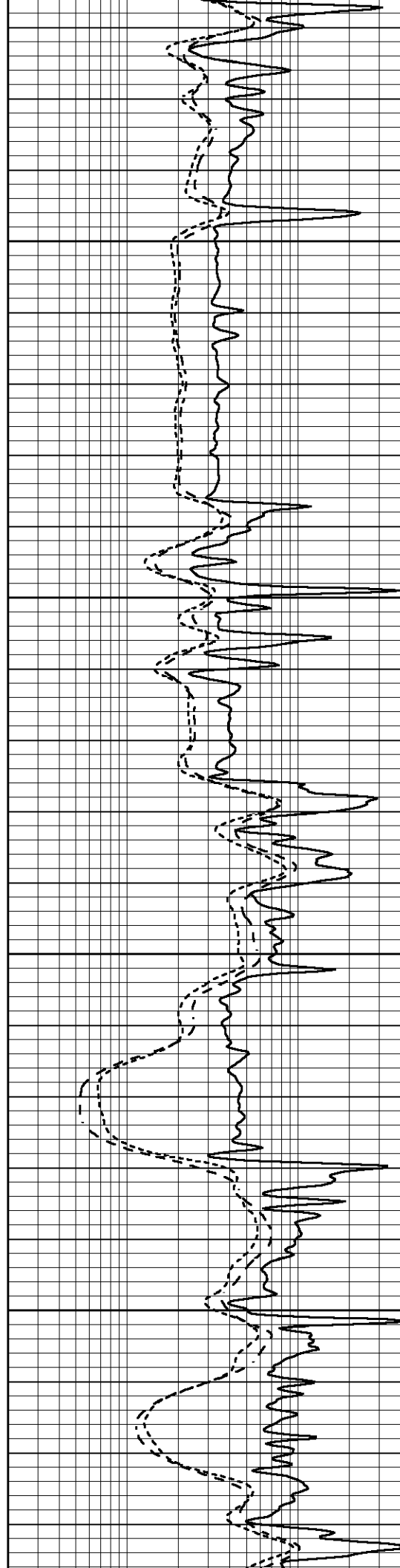


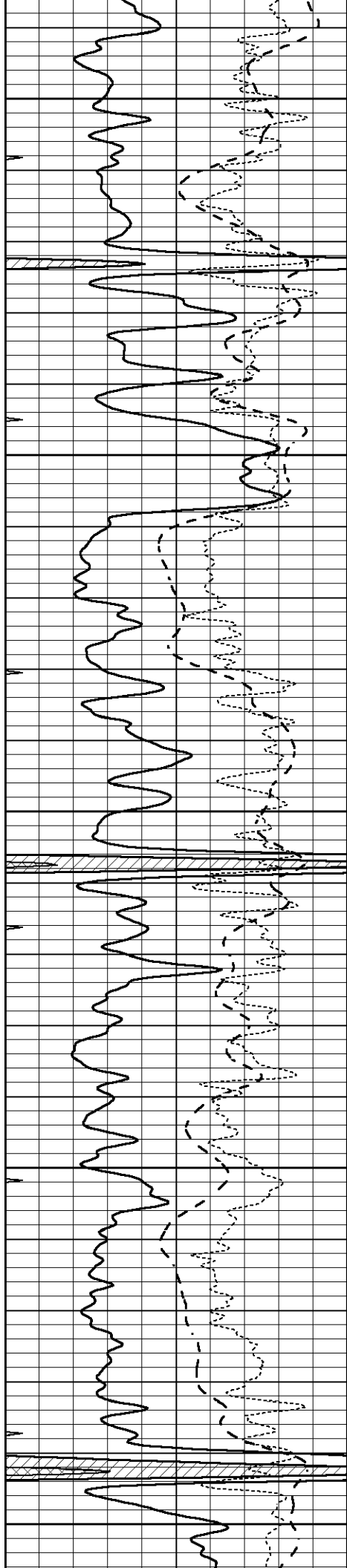
2300

2350

2400

2450





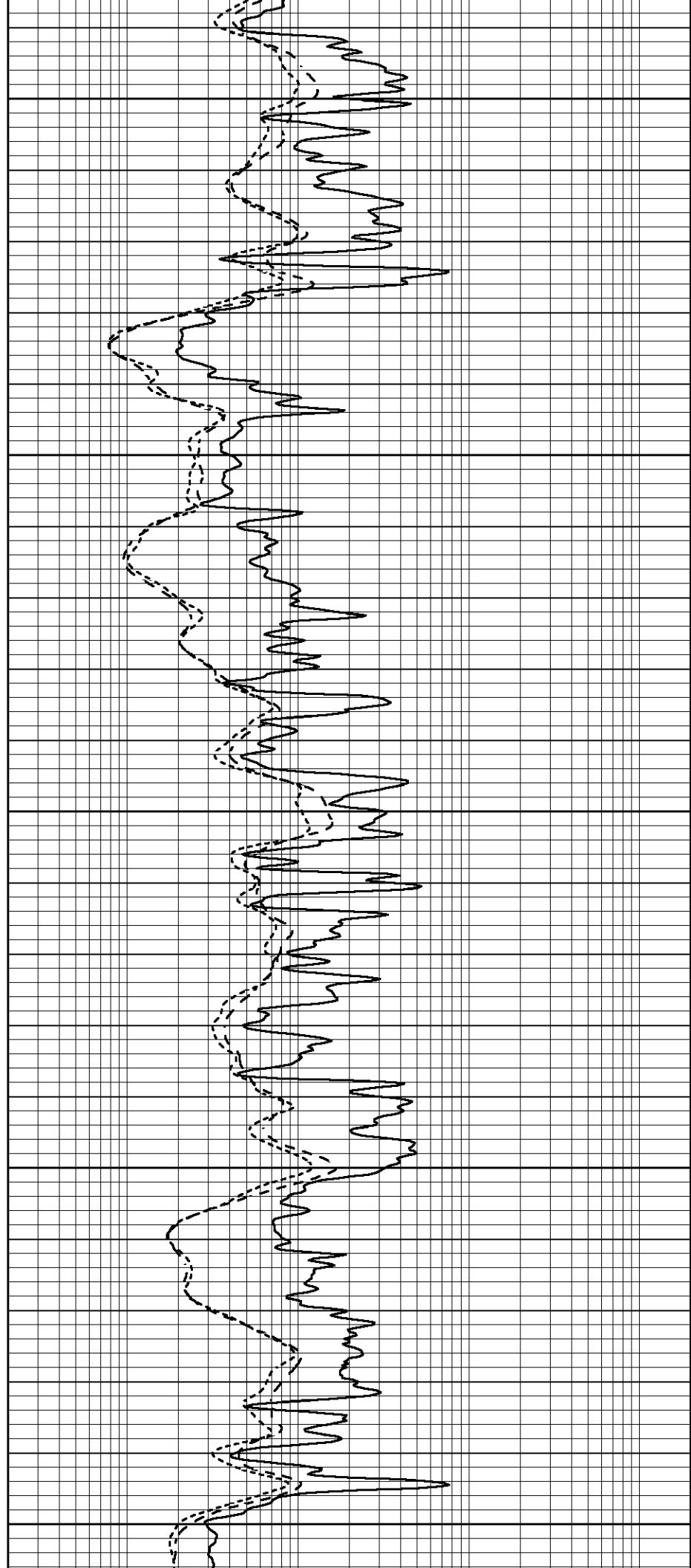
2500

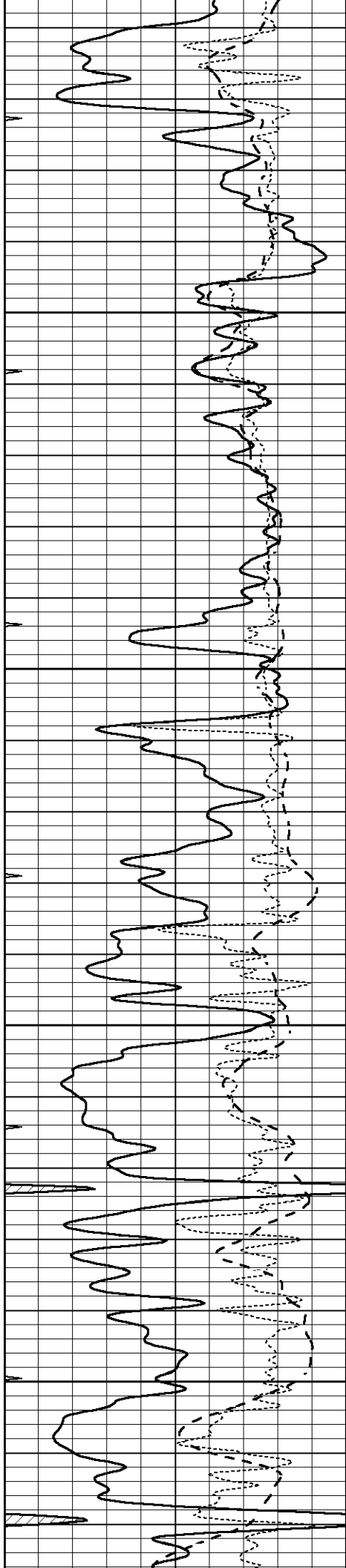
2550

2600

2650

2700



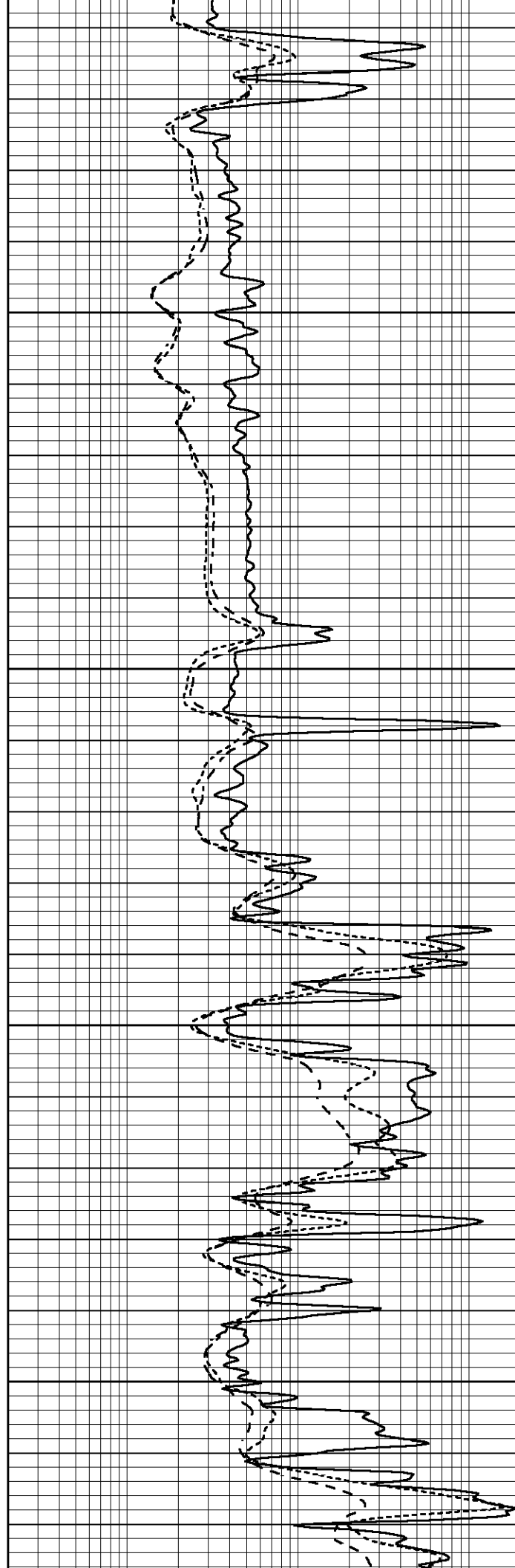


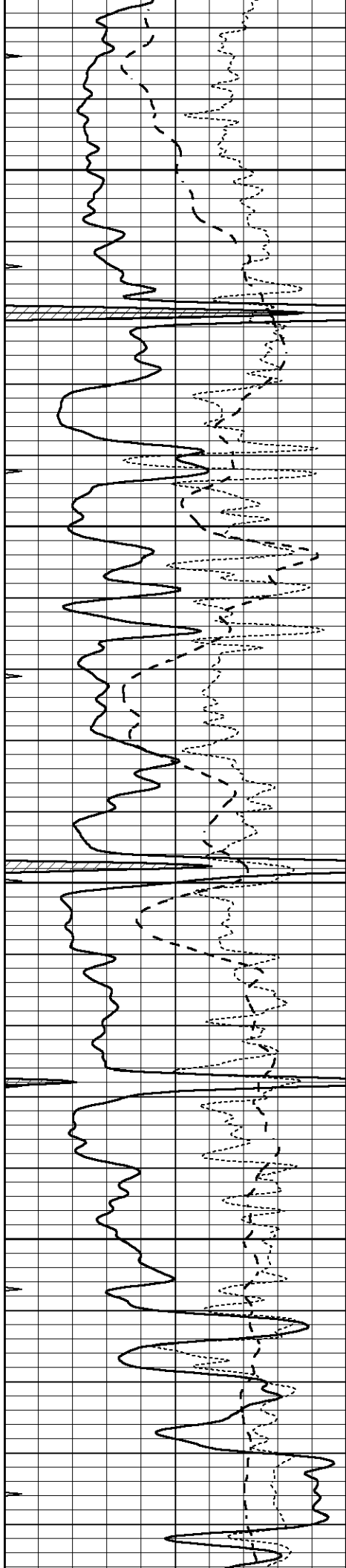
2750

2800

2850

2900



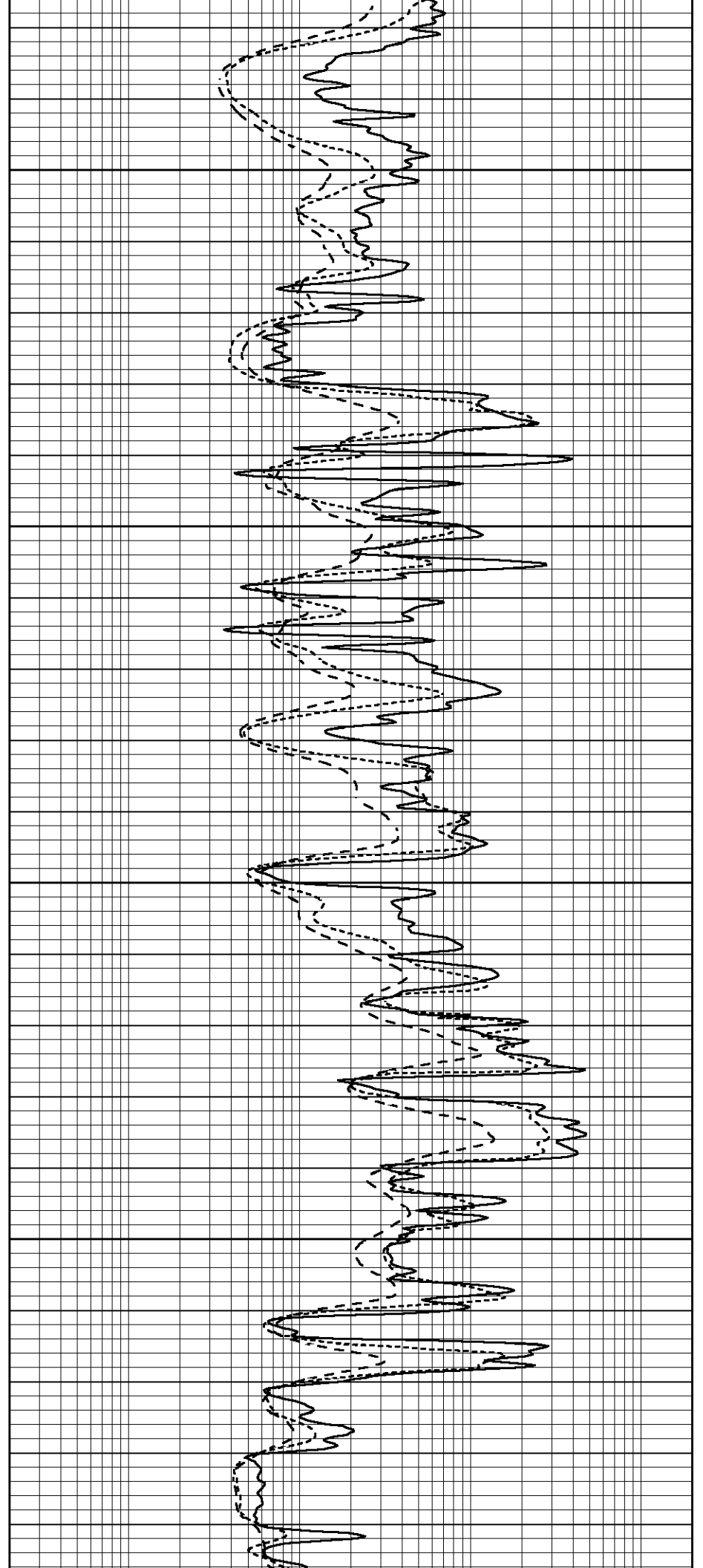


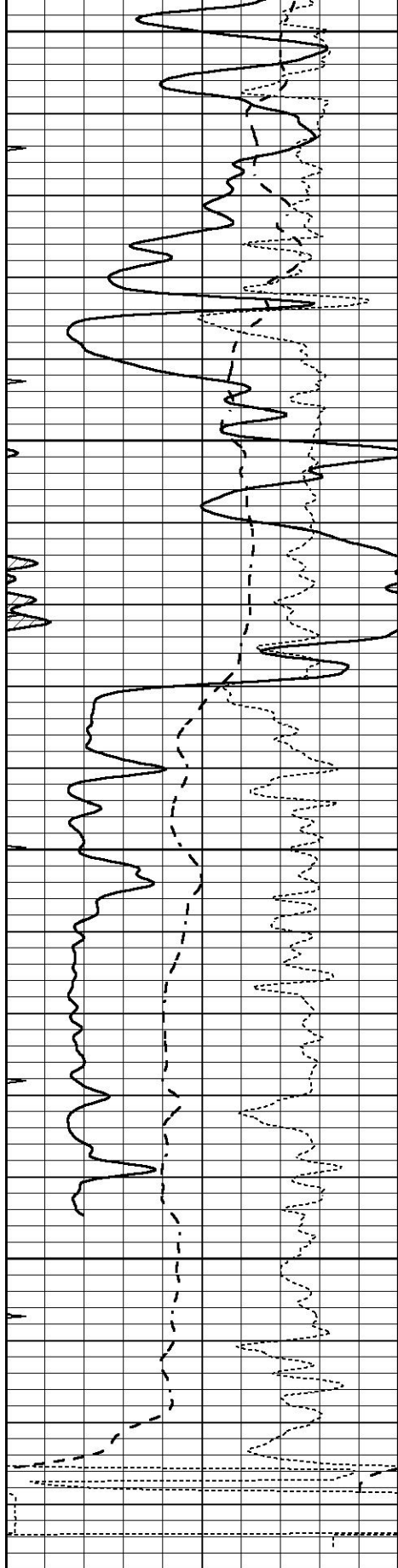
2950

3000

3050

3100





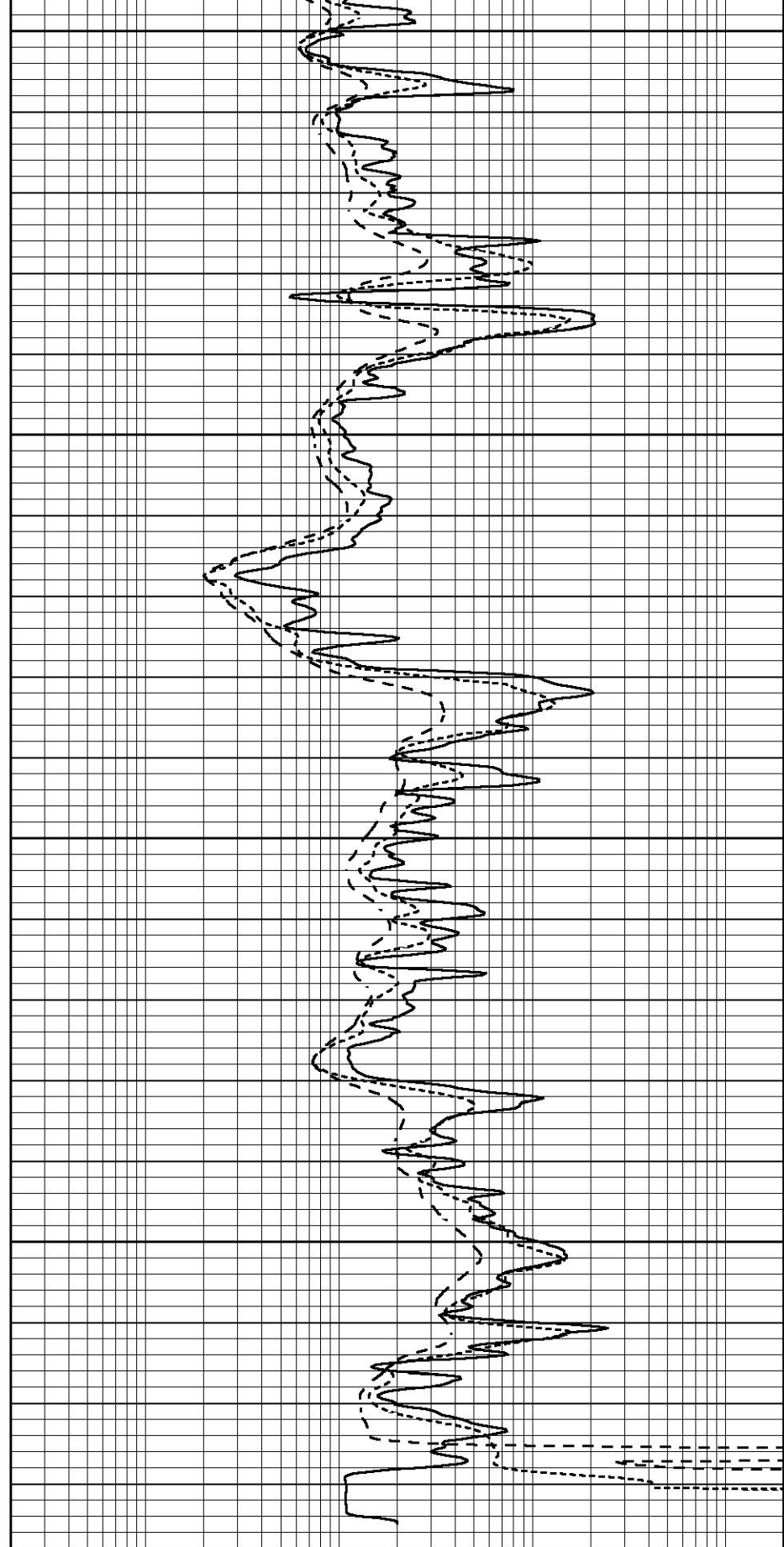
3150

3200

3250

3300

0	GAMMA RAY (GAPI)	150
-100	SP (mV)	100
-250	Rxo/Rt	50
0	MINMK	20



0.2	SHALLOW GUARD (Ohm-m)	2000
0.2	DEEP INDUCTION (Ohm-m)	2000
0.2	MEDIUM INDUCTION (Ohm-m)	2000



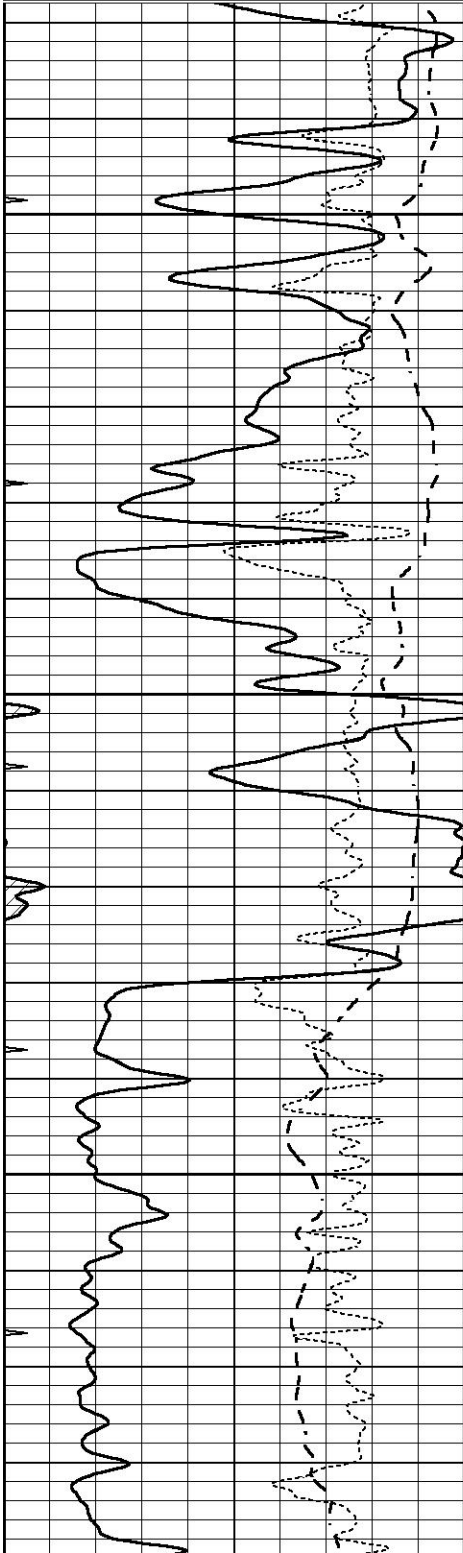


REPEAT SECTION

Database File 5268ddn.db
Dataset Pathname pass2.1R
Presentation Format _dil
Dataset Creation Tue Apr 27 18:22:30 2021
Charted by Depth in Feet scaled 1:240

0	GAMMA RAY (GAPI)	150
-100	SP (mV)	100
-250	Rxo/Rt	50
0	MINMK	20

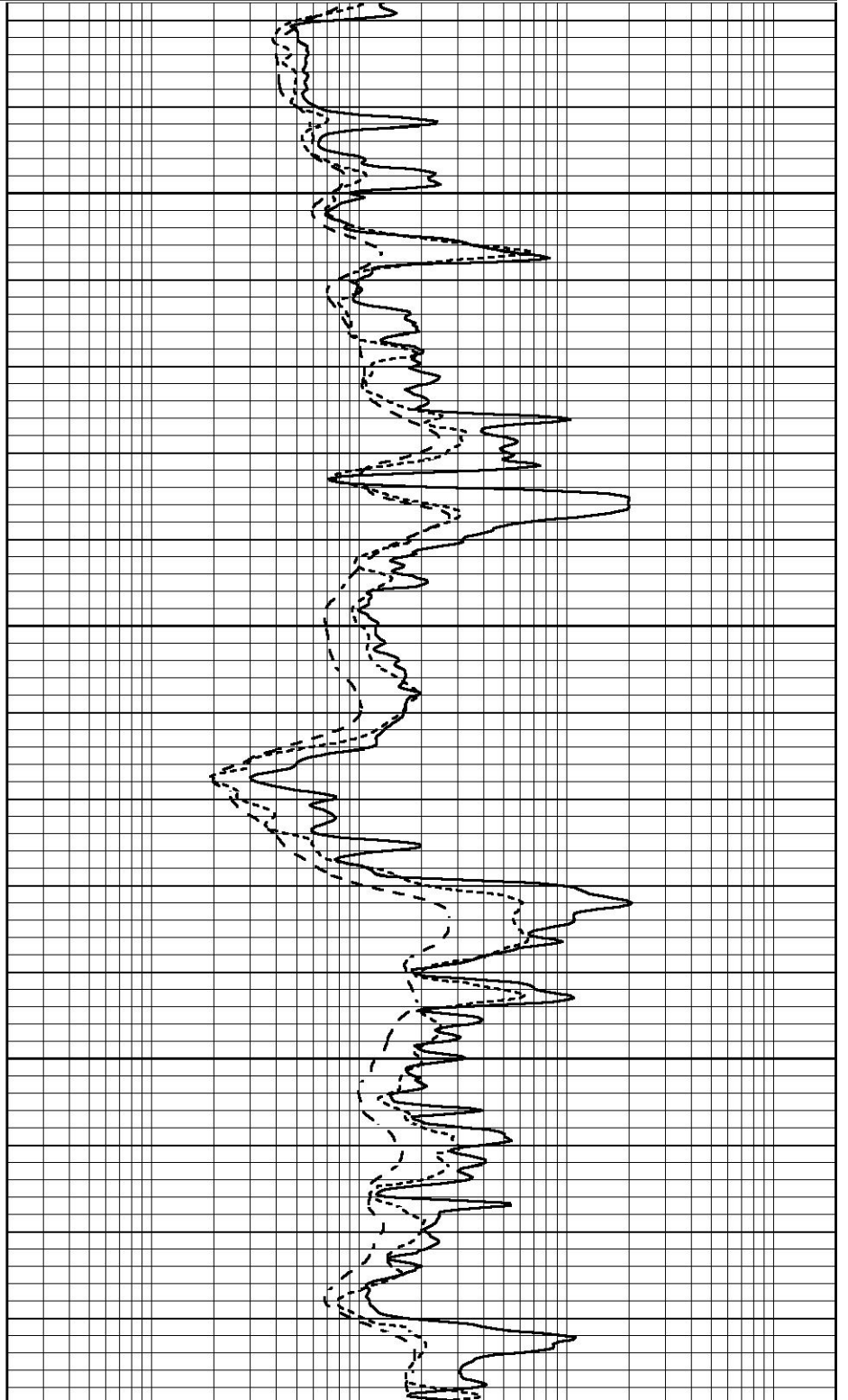
0.2	SHALLOW GUARD (Ohm-m)	2000
0.2	DEEP INDUCTION (Ohm-m)	2000
0.2	MEDIUM INDUCTION (Ohm-m)	2000

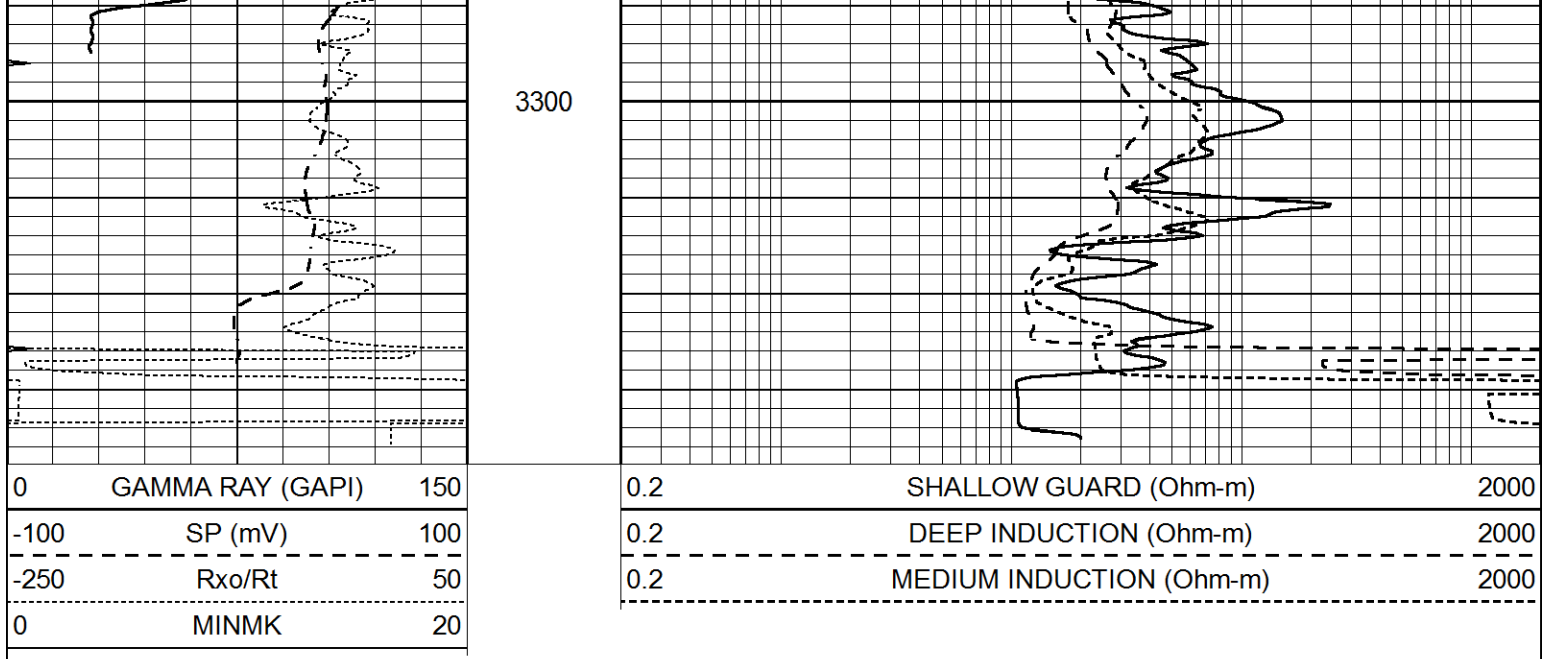


3150

3200

3250





Calibration Report

Database File 5268ddn.db
 Dataset Pathname pass3.2M
 Dataset Creation Tue Apr 27 19:33:10 2021

Dual Induction Calibration Report

Serial-Model: PROBE9-DILG
 Surface Cal Performed: Tue Apr 27 18:24:25 2021
 Downhole Cal Performed: Wed Mar 11 11:31:19 2020
 After Survey Verification Performed: Wed Mar 11 11:31:22 2020

Surface Calibration

Loop:	Readings			References			Results	
	Air	Loop		Air	Loop		m	b
Deep	-0.014	0.629	V	0.000	400.000	mmho/m	720.000	-22.000
Medium	0.039	0.728	V	0.000	464.000	mmho/m	680.000	2.000
Internal:	Zero	Cal		Zero	Cal		m	b
Deep	0.011	0.610	V	0.000	400.000	mmho/m	667.135	-7.256
Medium	0.005	0.712	V	0.000	464.000	mmho/m	655.677	-3.102

Downhole Calibration

	Readings			References			Results	
	Zero	Cal		Zero	Cal		m'	b'
Deep	0.000	0.000	mmho/m	14.508	388.384	mmho/m	1.000	0.000
Medium	0.000	0.000	mmho/m	166.367	504.400	mmho/m	1.000	0.000
LL3		7.500	V		1400.000	Ohm-m		
		0.000	V		20.000	Ohm-m		
		-7.200	V		4000.000	mmho-m		

After Survey Verification

	Readings			Targets			Results	
	Zero	Cal		Zero	Cal		m'	b'
Deep	0.000	0.000	mmho/m	0.000	0.000	mmho/m	0.000	0.000
Medium	0.000	0.000	mmho/m	0.000	0.000	mmho/m	0.000	0.000
LL3		1.000	Ohm-m		1.000	Ohm-m		
		0.000	Ohm-m		0.000	Ohm-m		

Litho Density Calibration Report
Serial: 003 Model: PRB

Master Calibration

Performed Fri Mar 05 10:51:07 2021

	Background	Magnesium	Aluminum	Aluminum+Fe	
Window 1	1570.6	10682.1	3457.0	3096.9	cps
Window 2	1451.7	9432.7	3101.4	2816.5	cps
Window 3	1334.0	7160.6	2532.0	2369.3	cps
Window 4	370.4	373.1	366.4	370.9	cps
Long Space	0.0	7981.0	1649.7	1364.8	cps
Short Space	2.8	3522.0	2211.0	1823.6	cps
Rho		1.7100	2.5900	0.0000	g/cc
Pe		2.0000	2.7500	5.7900	
Rib Angle	: 43.5	Rib Slope	: 0.951	Density/Spine Ratio	: 0.535
Spine Angle	: 73.5	Spine Slope	: 3.386	Spine Intercept	: -18.7

Before Survey Verification

Performed Wed Dec 31 18:00:00 1969

	Background	Magnesium	Aluminum	Aluminum+Fe	
Window 1	0.0	0.0	0.0	0.0	cps
Window 2	0.0	0.0	0.0	0.0	cps
Window 3	0.0	0.0	0.0	0.0	cps
Window 4	0.0	0.0	0.0	0.0	cps
Long Space	0.0	0.0	0.0	0.0	cps
Short Space	0.0	0.0	0.0	0.0	cps
Measured Rho		0.0000	0.0000	0.0000	g/cc
Measured Correction		0.0000	0.0000	0.0000	g/cc
Measured Pe			0.0000	0.0000	

After Survey Verification

Performed Wed Dec 31 18:00:00 1969

	Background	Magnesium	Aluminum	Aluminum+Fe	
Window 1	0.0	0.0	0.0	0.0	cps
Window 2	0.0	0.0	0.0	0.0	cps
Window 3	0.0	0.0	0.0	0.0	cps
Window 4	0.0	0.0	0.0	0.0	cps
Long Space	0.0	0.0	0.0	0.0	cps
Short Space	0.0	0.0	0.0	0.0	cps
Measured Rho		0.0000	0.0000	0.0000	g/cc
Measured Correction		0.0000	0.0000	0.0000	g/cc
Measured Pe			0.0000	0.0000	

Compensated Neutron Calibration Report

Serial Number: 070808PMC
Tool Model: NABORS

PRE-SURVEY VERIFICATION

Detector	Readings	Measured	Target
Short Space	cps		
Long Space	cps	pu	pu

POST-SURVEY VERIFICATION

Detector	Readings	Measured	Target
----------	----------	----------	--------

Short Space
Long Space

cps
cps

pu

pu

Gamma Ray Calibration Report

Serial Number:	070558	
Tool Model:	OPEN_GR	
Performed:	Fri Apr 16 13:57:16 2021	
Calibrator Value:	1.0	GAPI
Background Reading:	0.0	cps
Calibrator Reading:	1.0	cps
Sensitivity:	0.3000	GAPI/cps