



MICRO LOG

Company TREK AEC, LLC.
Well STAATZ #2
Field GREEN GARDEN
County ELLSWORTH
State KANSAS

Company TREK AEC, LLC.
Well STAATZ #2
Field GREEN GARDEN
County ELLSWORTH State KANSAS

Location: 1445' FSL & 1945' FEL
SW - SE - NW - SE
SEC 35 TWP 16S RGE 9W
Permanent Datum GROUND LEVEL Elevation 1739
Log Measured From KELLY BUSHING 8' A.G.L.
Drilling Measured From KELLY BUSHING
Other Services CDL/CNL DIL/SON
Elevation K.B. 1747 D.F. 1745 G.L. 1739

Table with columns: Date, Run Number, Depth Driller, Depth Logger, Bottom Logged Interval, Top Log Interval, Casing Driller, Casing Logger, Bit Size, Type Fluid in Hole, Density / Viscosity, pH / Fluid Loss, Source of Sample, Rim @ Meas. Temp, Rmf @ Meas. Temp, Rmc @ Meas. Temp, Source of Rmf / Rmc, Rim @ BHT, Time Circulation Stopped, Time Logger on Bottom, Maximum Recorded Temperature, Equipment Number, Location, Recorded By, Witnessed By.

<<< Fold Here >>>
All interpretations are opinions based on inferences from electrical or other measurements and we cannot and do not guarantee the accuracy or correctness of any interpretation, and we shall not, except in the case of gross or willful negligence on our part, be liable or responsible for any loss, costs, damages, or expenses incurred or sustained by anyone resulting from any interpretation made by any of our officers, agents or employees. These interpretations are also subject to our general terms and conditions set out in our current Price Schedule.

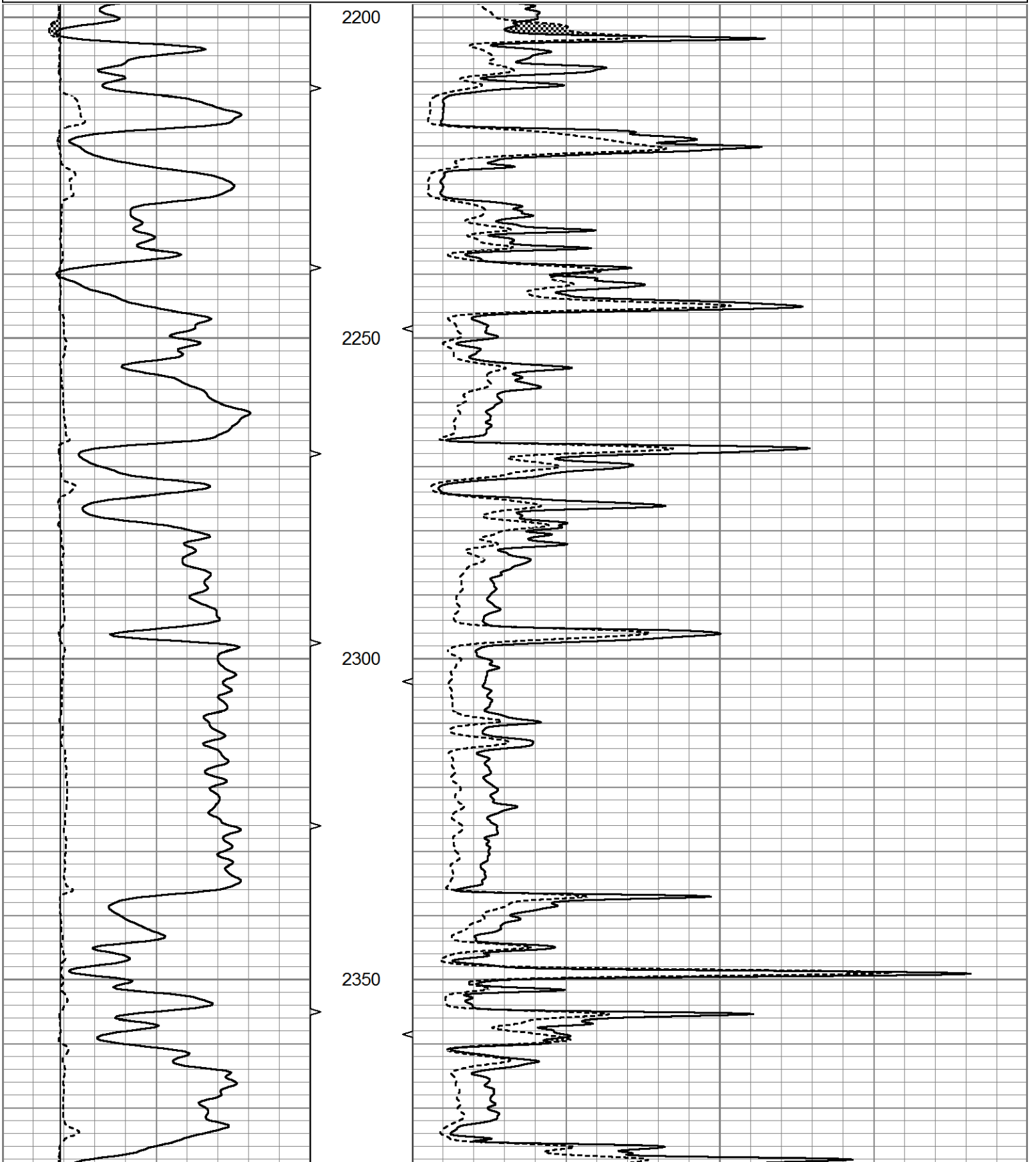
15-053-21375-0000 Comments
THANK YOU FOR USING ELI WIRELINE HAYS, KANSAS (785) 628-6395
DIRECTIONS
HOLYROOD, KS. (HWY 156 & AVE. T) 8E. ON "AVE. T" TO "12TH RD.", 1N. TO TANK BATTERY, W. & N. INTO

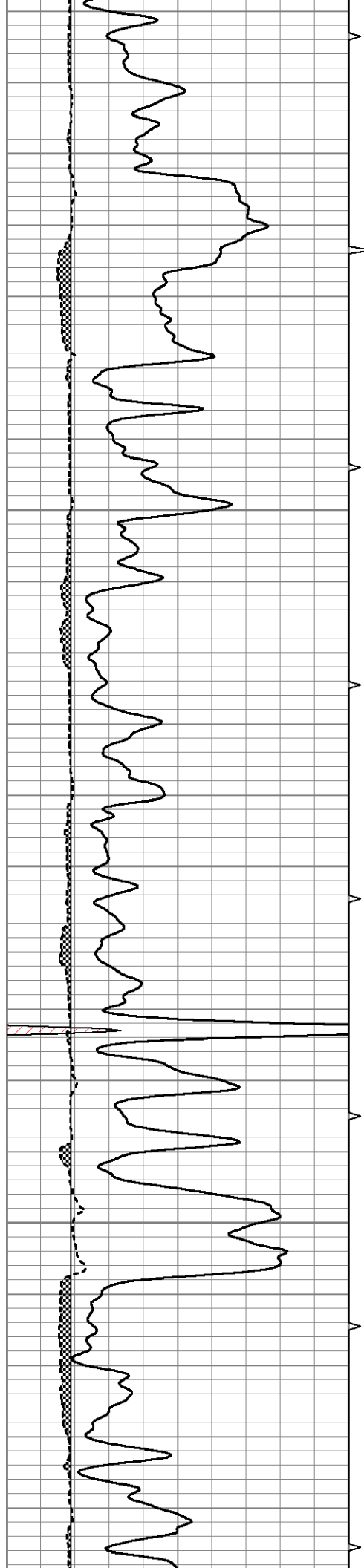


MAIN SECTION

Database File 5268ddn.db
 Dataset Pathname pass6.3
 Presentation Format micro
 Dataset Creation Tue Apr 27 20:19:31 2021
 Charted by Depth in Feet scaled 1:240

0	GR (GAPI)	150	ABHV	0	MEL20 (Ohm-m)	40
6	MELCAL (in)	16	10 (ft3)	0	MEL15 (Ohm-m)	40
			ABHV			
			0 (ft3)	10		



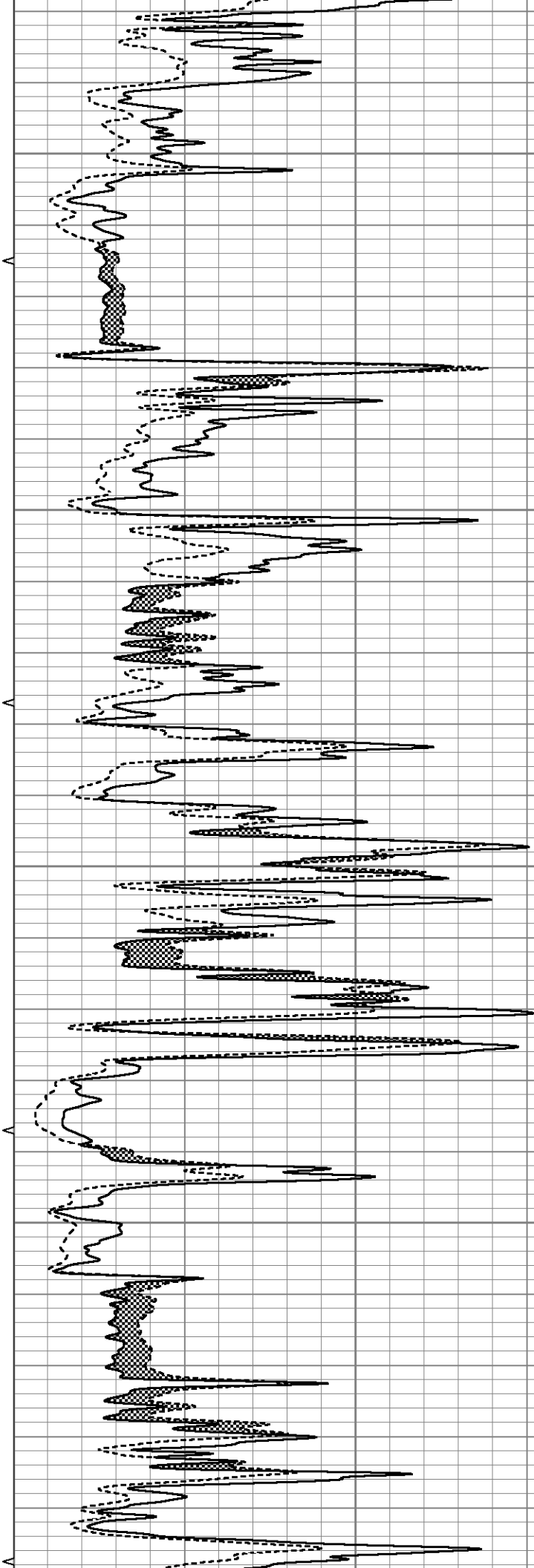


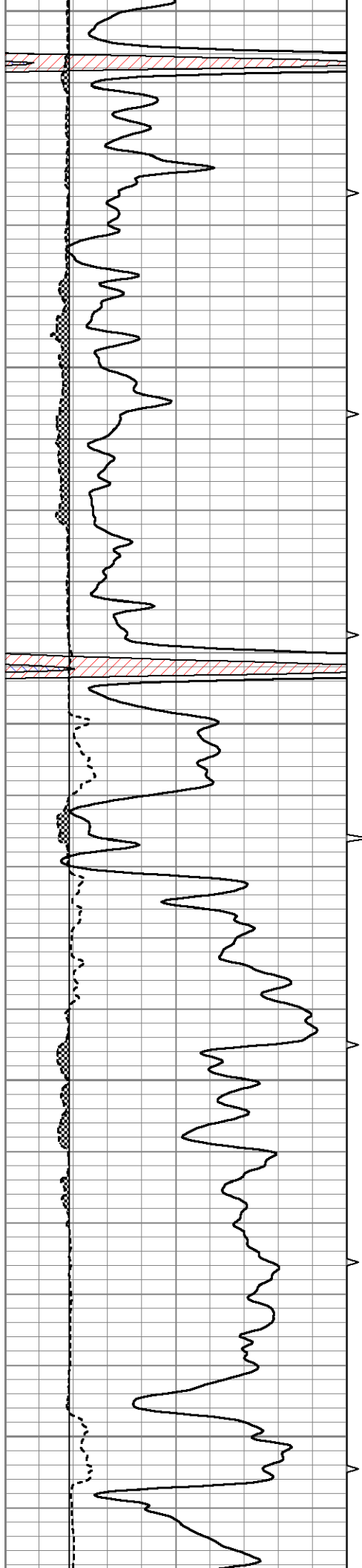
2400

2450

2500

2550





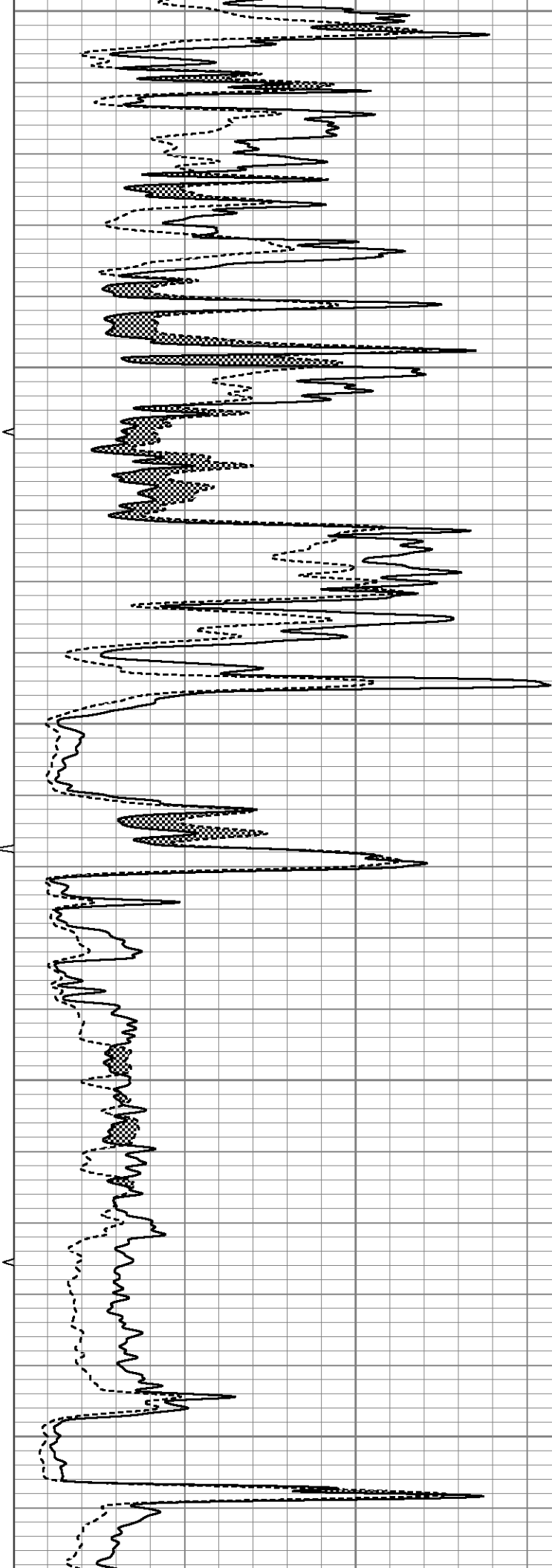
2600

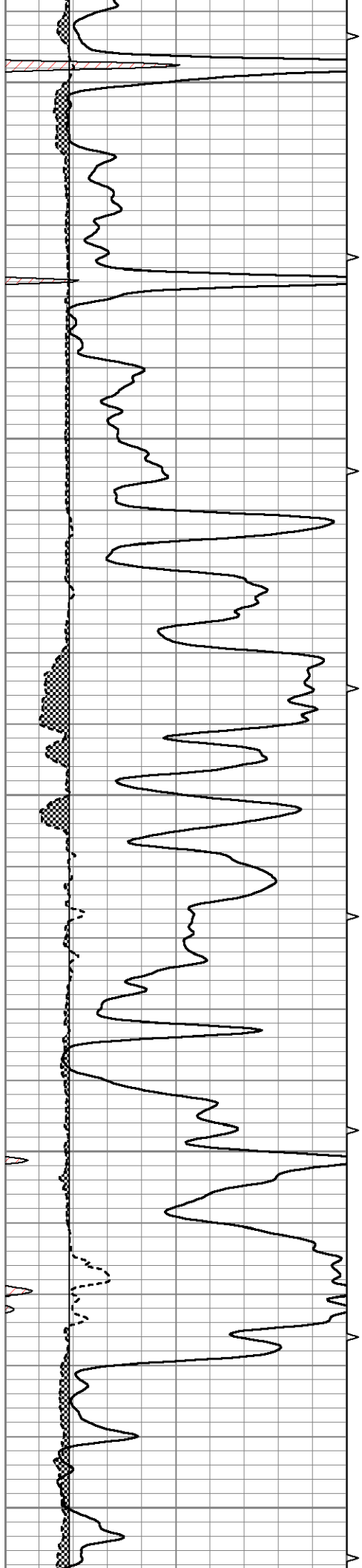
2650

2700

2750

2800





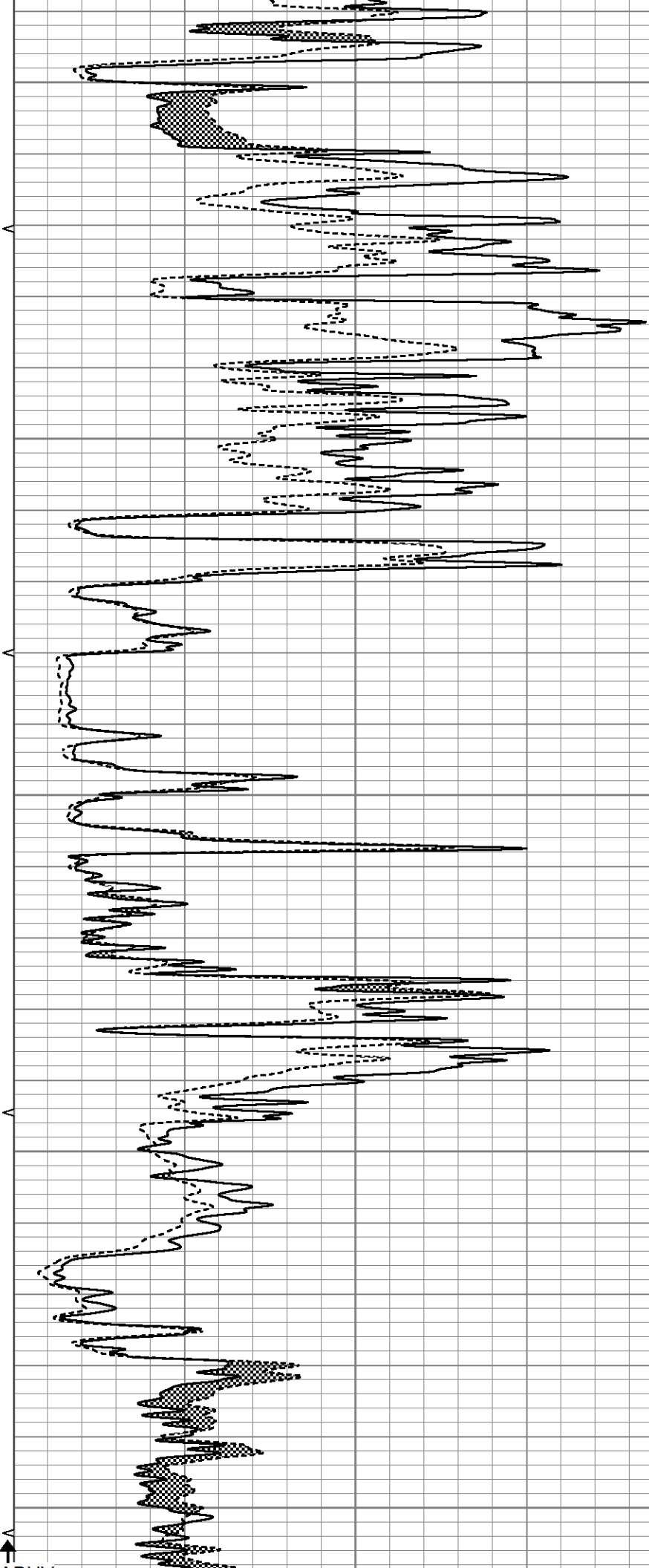
3050

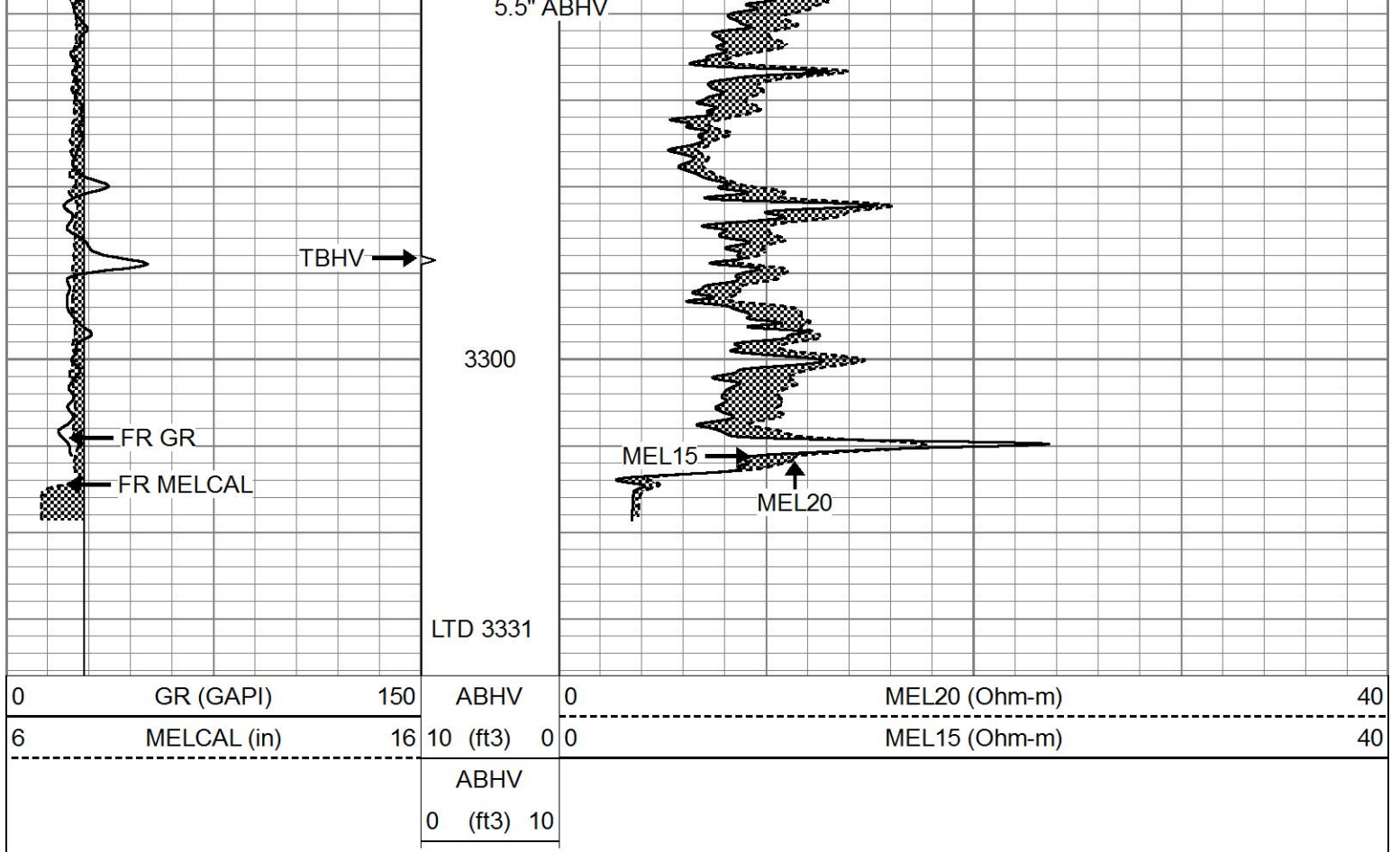
3100

3150

3200

3250

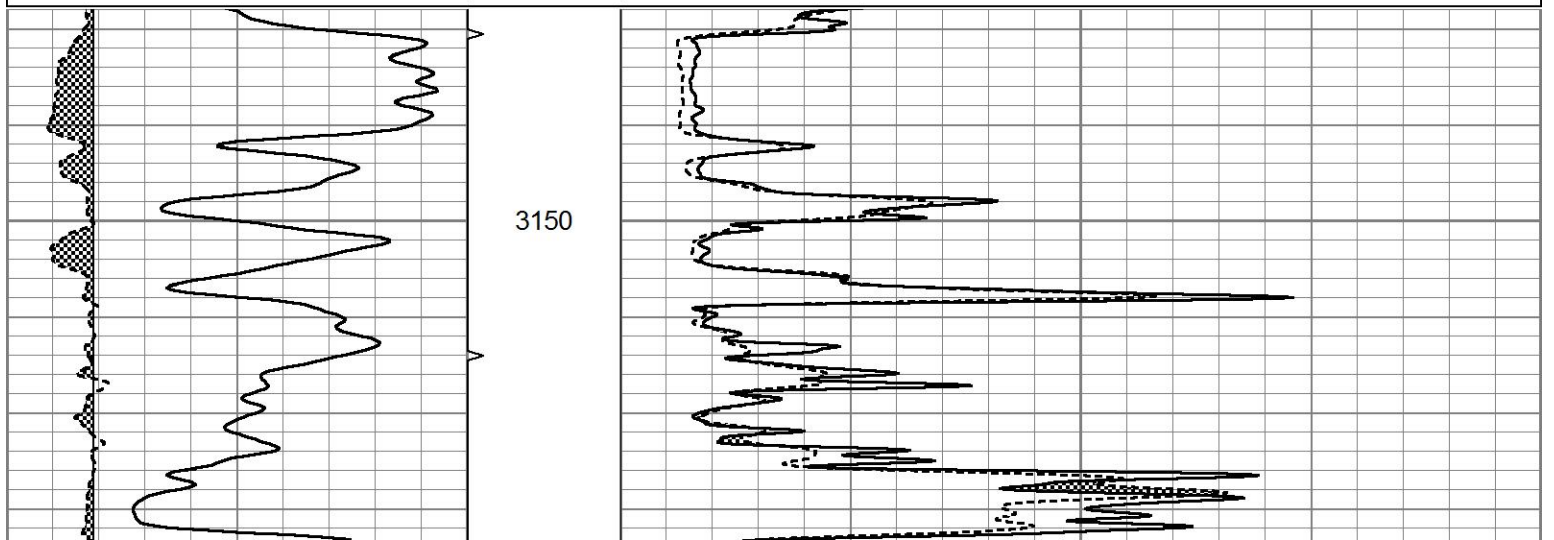


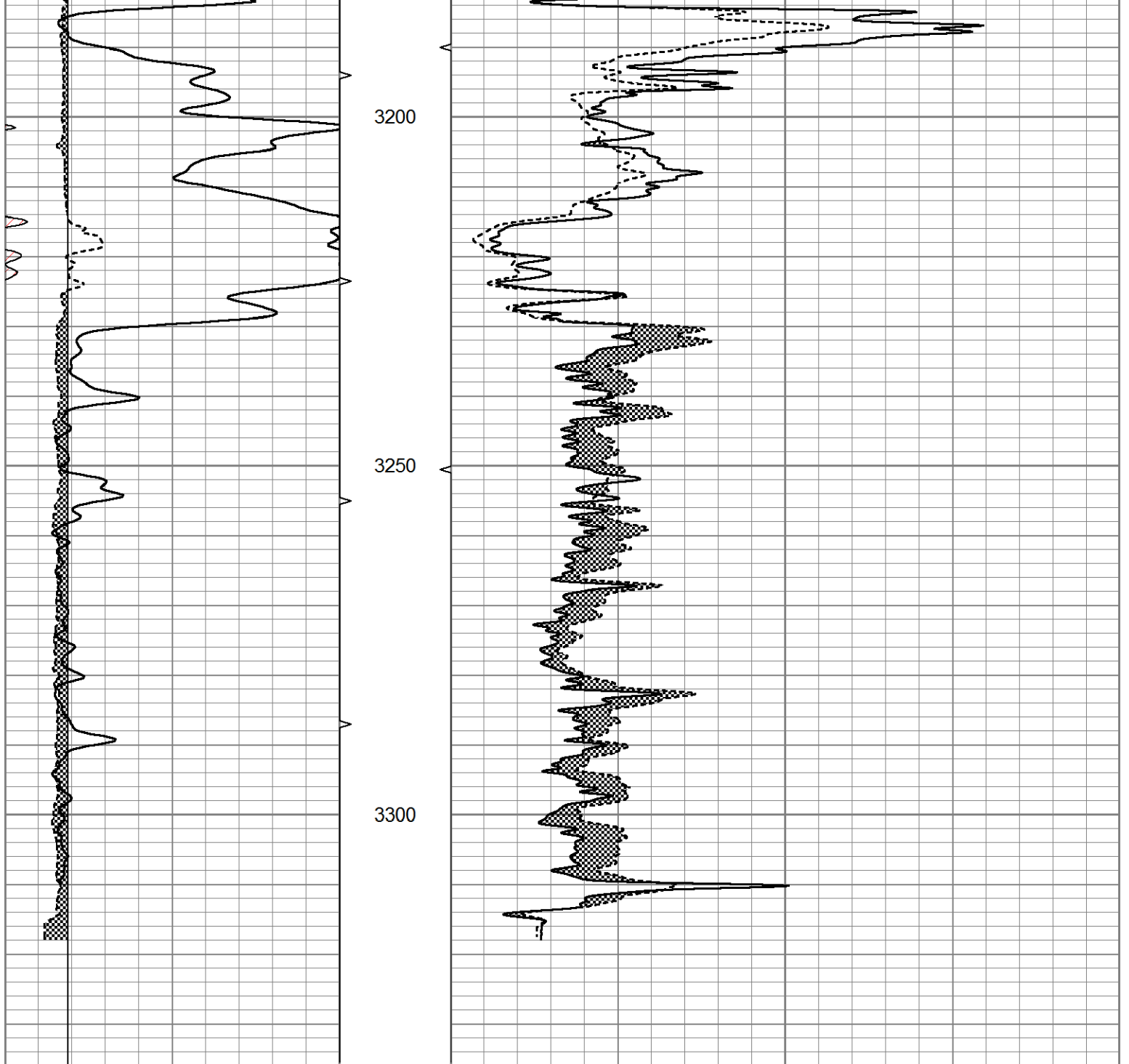


REPEAT SECTION

Database File 5268ddn.db
 Dataset Pathname pass5.3
 Presentation Format micro
 Dataset Creation Tue Apr 27 19:59:53 2021
 Charted by Depth in Feet scaled 1:240

0	GR (GAPI)	150	ABHV	0	MEL20 (Ohm-m)	40
6	MELCAL (in)	16	10 (ft3)	0 0	MEL15 (Ohm-m)	40
			ABHV			
			0 (ft3)	10		





0	GR (GAPI)	150	ABHV	0	MEL20 (Ohm-m)	40
6	MELCAL (in)	16	10 (ft3)	0	MEL15 (Ohm-m)	40
			ABHV			
			0 (ft3)	10		

Calibration Report

Database File 5268ddn.db
 Dataset Pathname pass6.3
 Dataset Creation Tue Apr 27 20:19:31 2021

MICRO Calibration Report

Serial Number: 070912
 Tool Model: ProbeN
 Performed: Fri Mar 19 15:23:22 2021

Caliper Calibration: Gain=3.433 Offset=0.893

References	Low Cal 8.000	High Cal 16.000
Readings	2.070	4.400
1.5" Calibration:	Gain=20.000	Offset=0.500
References	Low Cal 0.000	High Cal 20.000
Readings	0.002	1.239
2" Calibration:	Gain=32.000	Offset=-0.500
References	Low Cal 0.000	High Cal 20.000
Readings	0.003	1.075
Gamma Ray Calibration Report		
Serial Number:	070559	
Tool Model:	OPEN_GR	
Performed:	Wed Apr 21 02:21:11 2021	
Calibrator Value:	1.0	GAPI
Background Reading:	0.0	cps
Calibrator Reading:	1.0	cps
Sensitivity:	0.3600	GAPI/cps