



COMPENSATED
DENSITY / NEUTRON
LOG

Company TREK AEC, LLC.
Well STAATZ #2
Field GREEN GARDEN
County ELLSWORTH State KANSAS

Location: API #: 15-053-21375-0000
1445' FSL & 1945' FEL
SW - SE - NW - SE
SEC 35 TWP 16S RGE 9W
Permanent Datum GROUND LEVEL Elevation 1739
Log Measured From KELLY BUSHING 8' A.G.L.
Drilling Measured From KELLY BUSHING
Other Services
DILMEL
SONIC
Elevation
K.B. 1747
D.F. 1745
G.L. 1739

Date	4/27/21
Run Number	ONE
Depth Driller	3330
Depth Logger	3331
Bottom Logged Interval	3307
Top Log Interval	2200
Casing Driller	8 5/8"@389'
Casing Logger	389
Bit Size	7 7/8"
Type Fluid in Hole	CHEMICAL MUD
Density / Viscosity	9.4/53
pH / Fluid Loss	9.5/7.2
Source of Sample	FLOWLINE
Rm @ Meas. Temp	.800@90F
Rmf @ Meas. Temp	.600@90F
Rmc @ Meas. Temp	.960@90F
Source of Rmf / Rmc	MEASUREMENT
Rm @ BHT	.656@110F
Time Circulation Stopped	2 HOURS
Time Logger on Bottom	5.45 P.M.
Maximum Recorded Temperature	110F
Equipment Number	922339
Location	HAYS, KANSAS
Recorded By	JEFF LUEBBERS
Witnessed By	DOUG DAVIS

<<< Fold Here >>>

All interpretations are opinions based on inferences from electrical or other measurements and we cannot and do not guarantee the accuracy or correctness of any interpretation, and we shall not, except in the case of gross or willful negligence on our part, be liable or responsible for any loss, costs, damages, or expenses incurred or sustained by anyone resulting from any interpretation made by any of our officers, agents or employees. These interpretations are also subject to our general terms and conditions set out in our current Price Schedule.

15-053-21375-0000 Comments

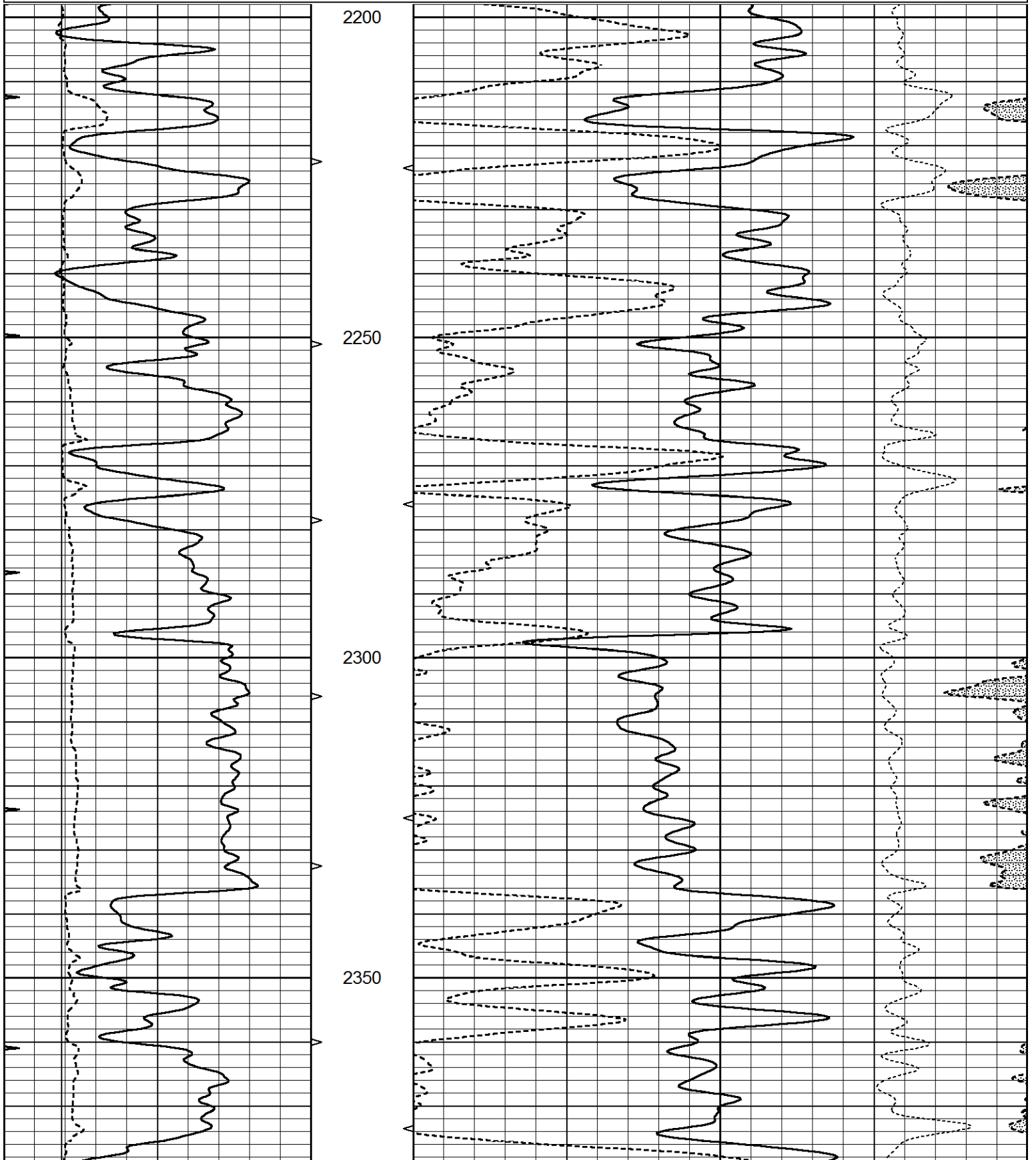
THANK YOU FOR USING ELI WIRELINE HAYS, KANSAS (785) 628-6395
DIRECTIONS
HOLYROOD, KS. (HWY 156 & AVE. T) 8E. ON "AVE. T" TO "12TH RD.", 1N. TO TANK BATTERY, W. & N. INTO

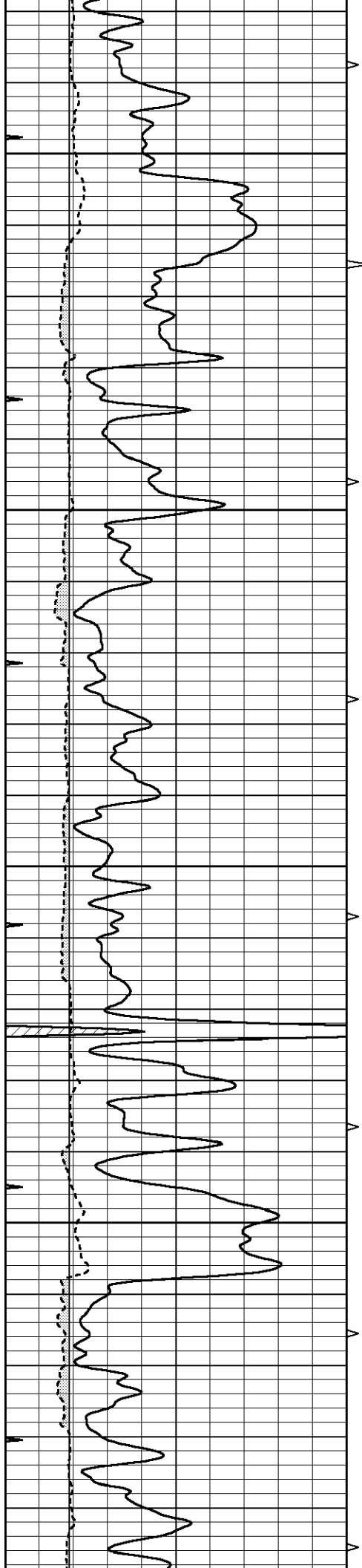


MAIN SECTION

Database File 5268ddn.db
 Dataset Pathname pass3.2M
 Presentation Format den_neu
 Dataset Creation Tue Apr 27 19:33:10 2021
 Charted by Depth in Feet scaled 1:240

0	GAMMA RAY (GAPI)	150	ABHV	30	COMPENSATED DENSITY (pu)	-10
6	DCAL (in)	16	10 (ft3)	0	COMPENSATED NEUTRON (pu)	-10
0	MINMK	20	TBHV		-0.25 CORRECTION (g/cc)	0.25
			0 (ft3)	10		



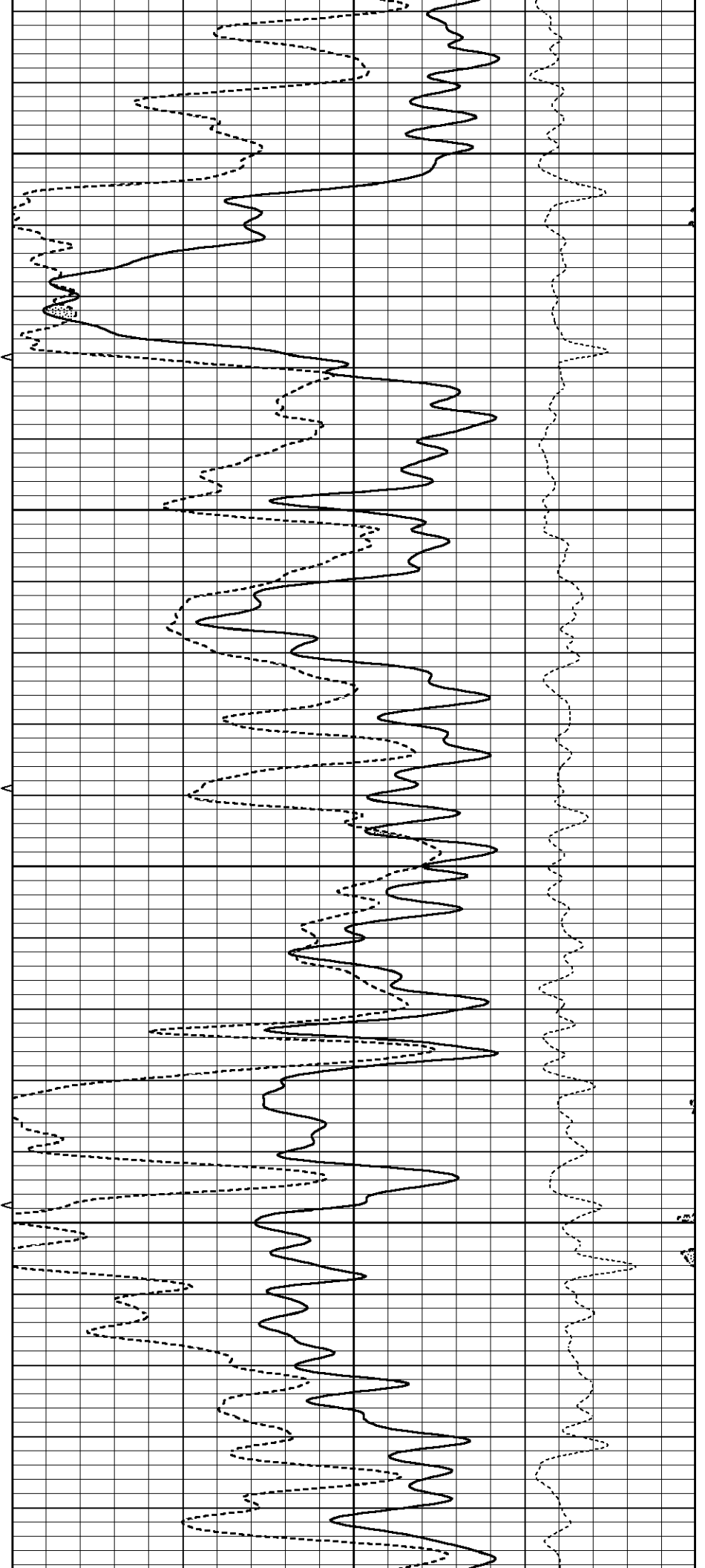


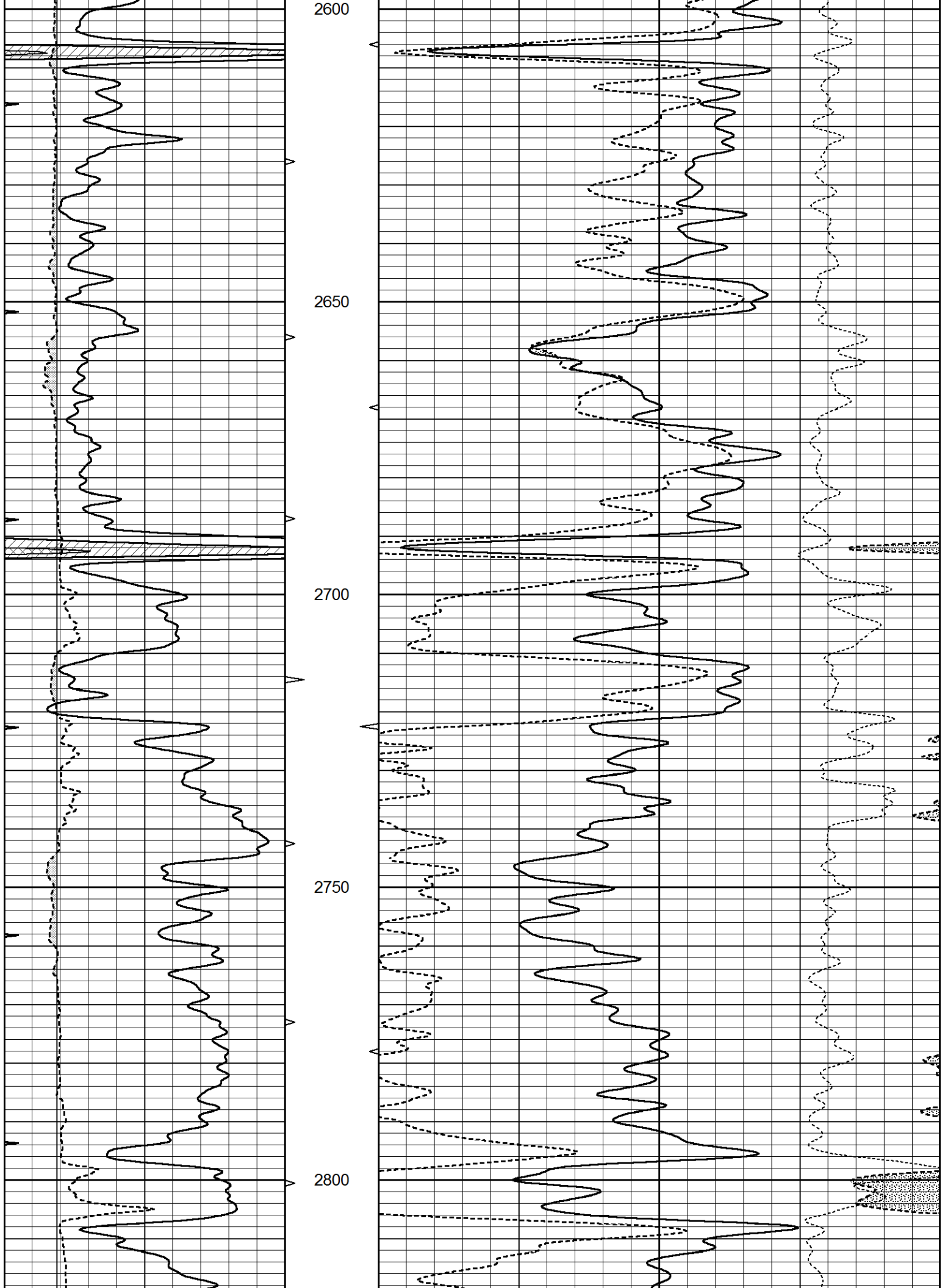
2400

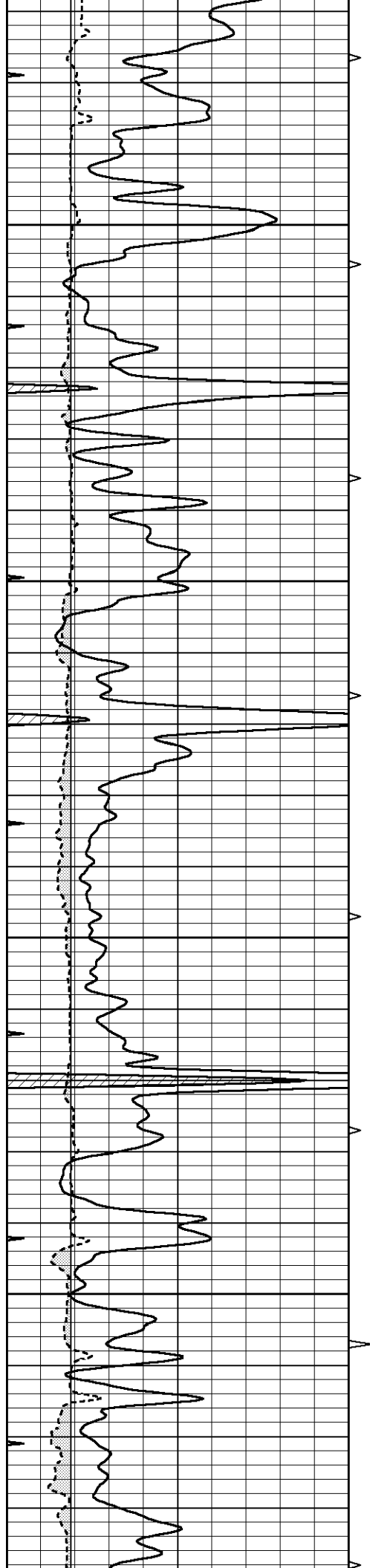
2450

2500

2550





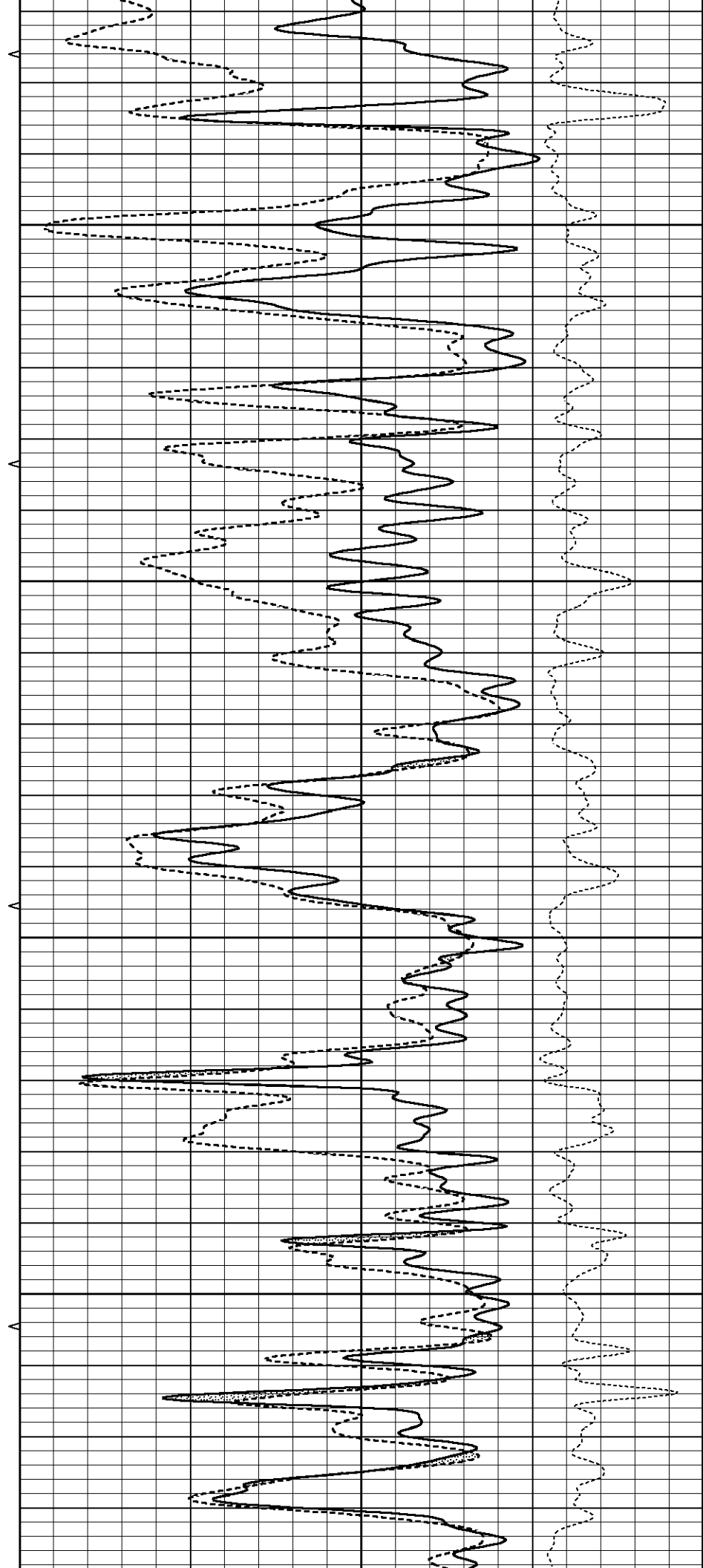


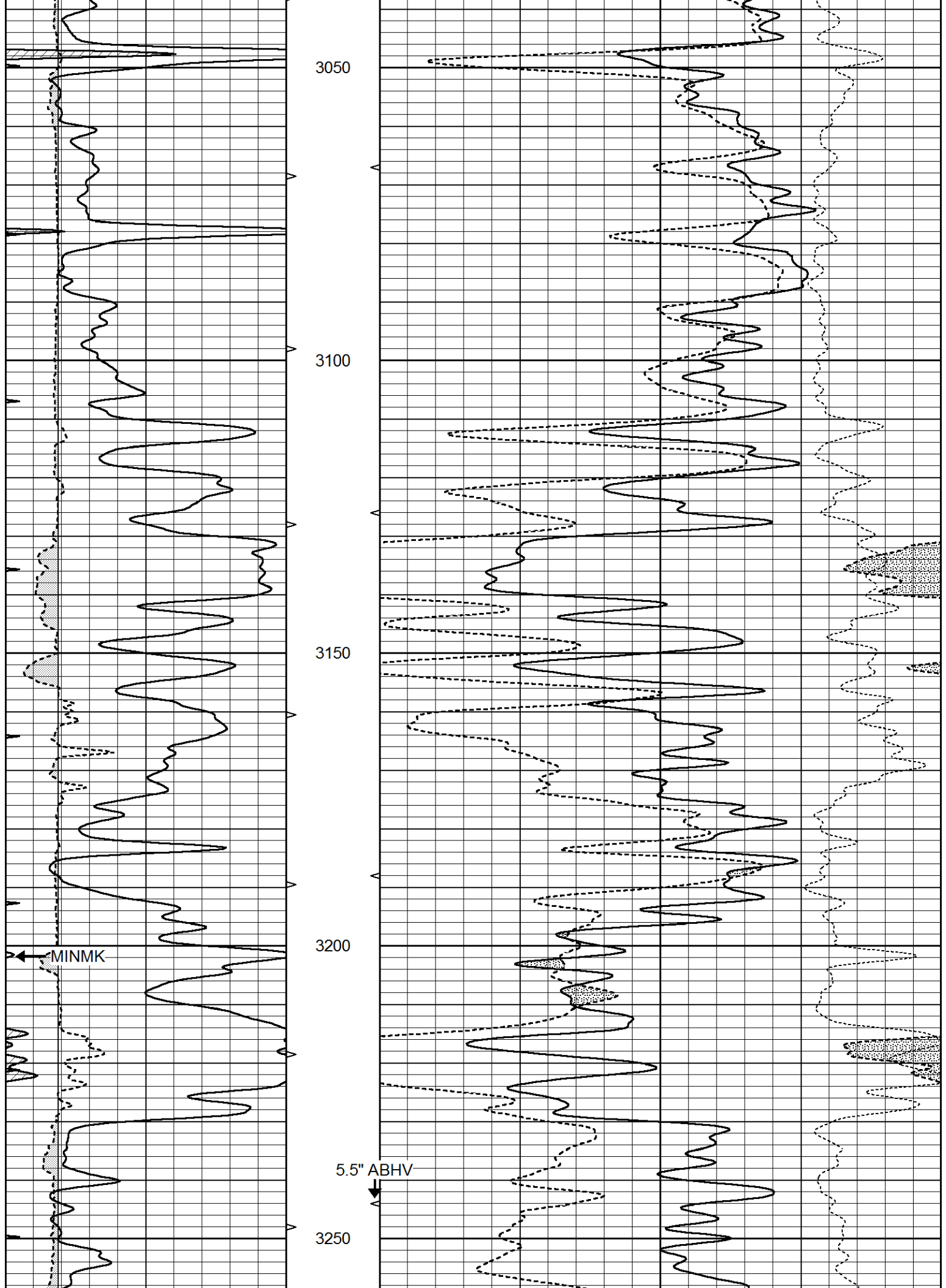
2850

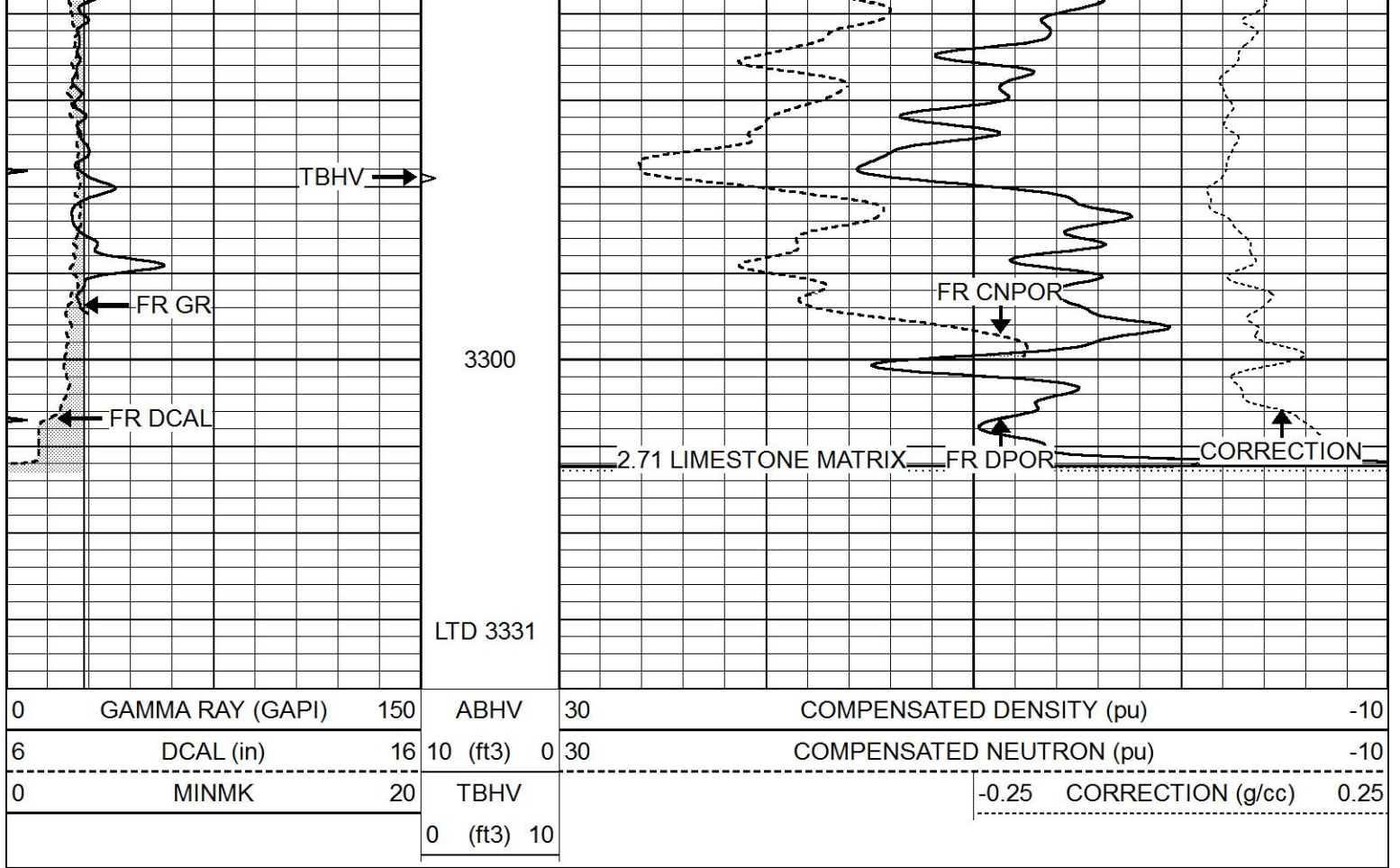
2900

2950

3000



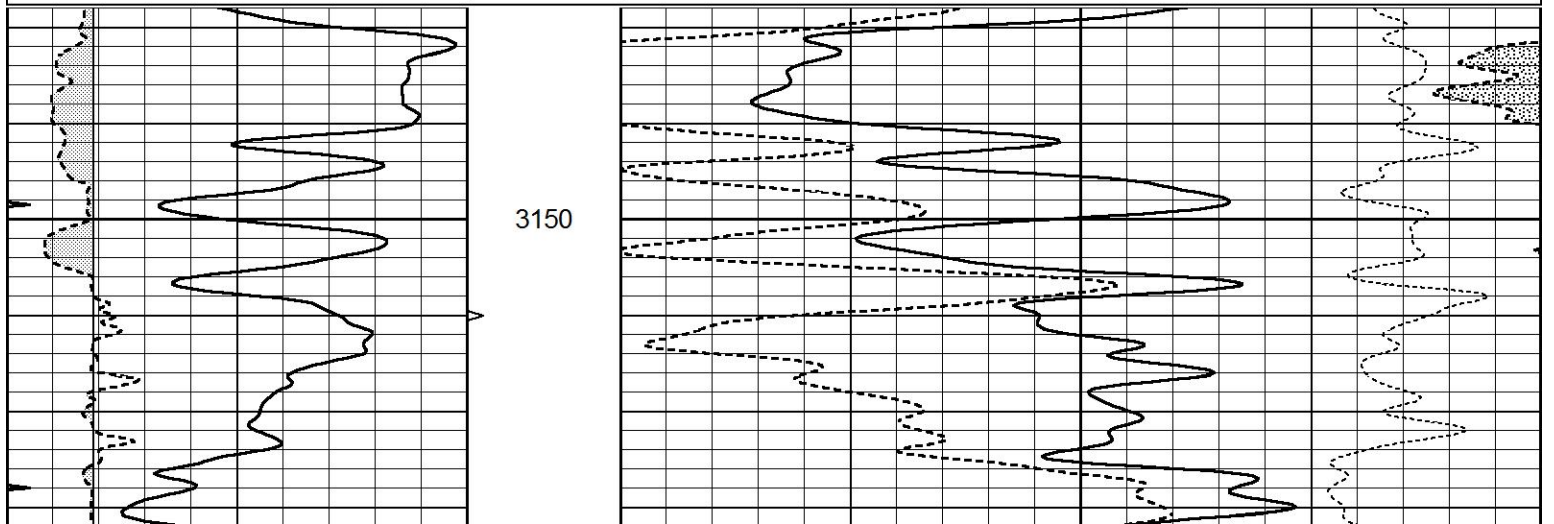


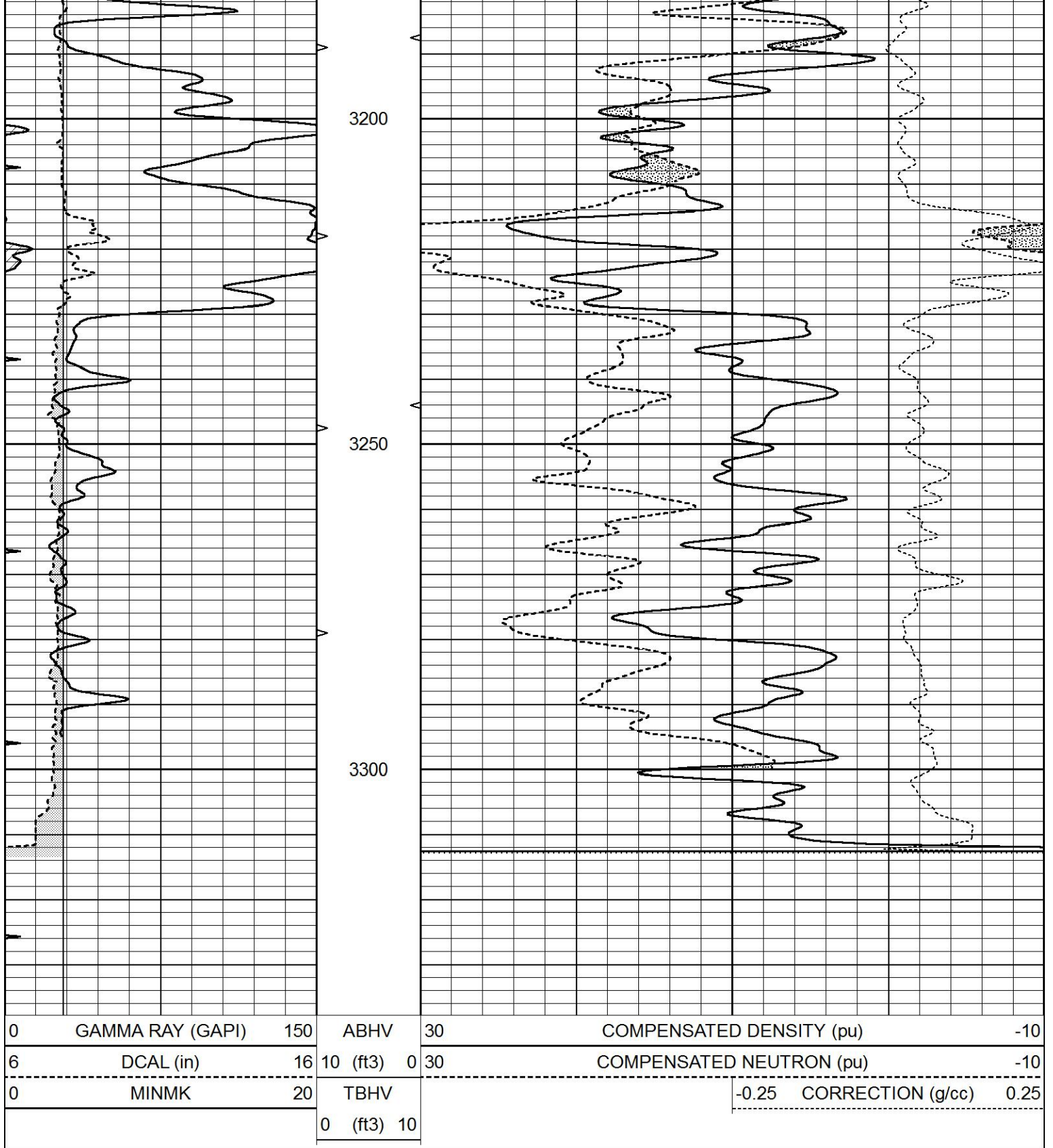


REPEAT SECTION

Database File 5268ddn.db
 Dataset Pathname pass2.1R
 Presentation Format den_neu
 Dataset Creation Tue Apr 27 18:22:30 2021
 Charted by Depth in Feet scaled 1:240

0	GAMMA RAY (GAPI)	150	ABHV	30	COMPENSATED DENSITY (pu)	-10
6	DCAL (in)	16	10 (ft3)	0 30	COMPENSATED NEUTRON (pu)	-10
0	MINMK	20	TBHV		-0.25 CORRECTION (g/cc)	0.25
			0 (ft3)	10		

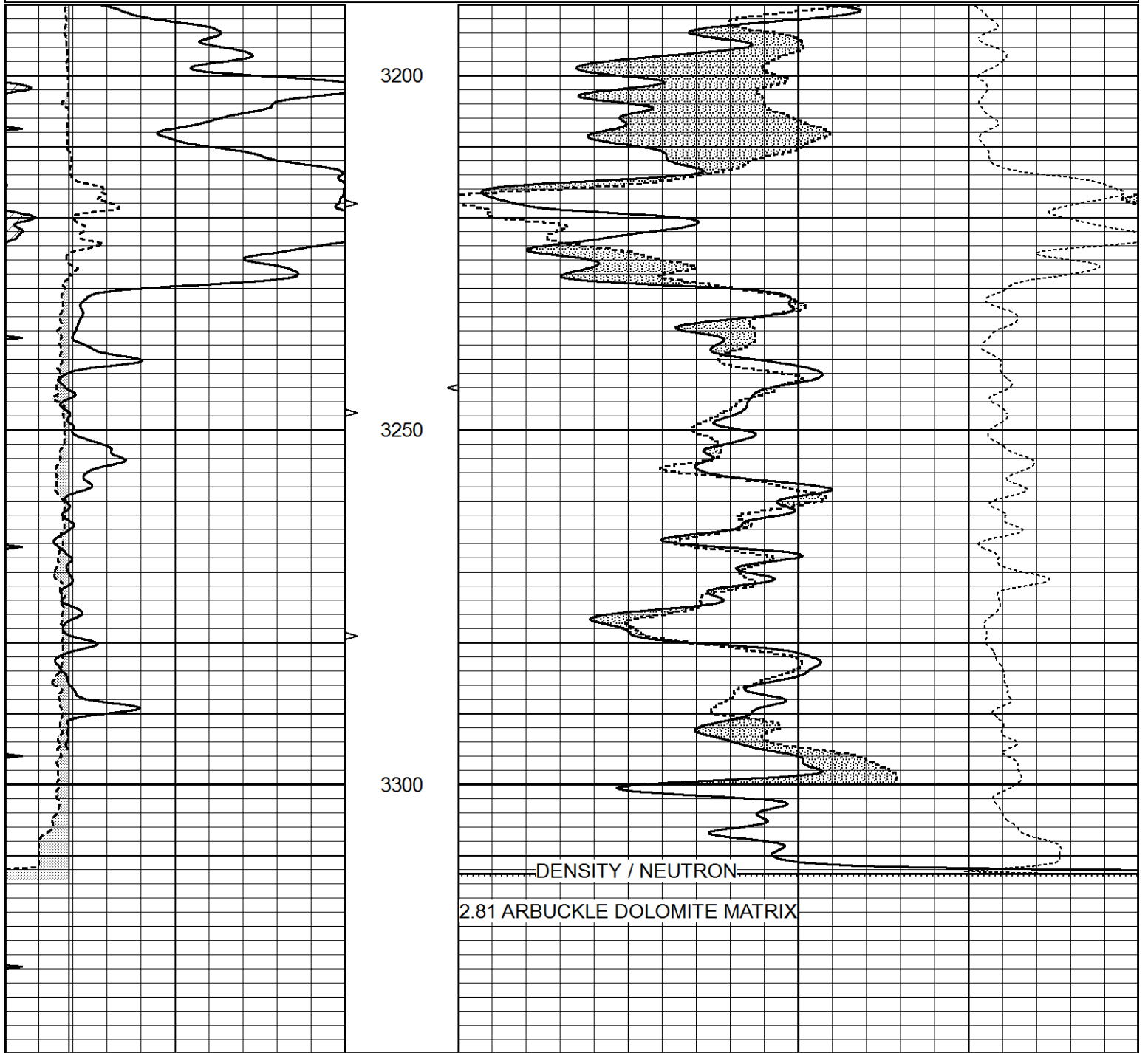




DOLOMITE MATRIX

Database File 5268ddn.db
 Dataset Pathname pass2.1D
 Presentation Format den_neu
 Dataset Creation Tue Apr 27 18:18:32 2021
 Charted by Depth in Feet scaled 1:240

0	GAMMA RAY (GAPI)	150	ABHV	30	COMPENSATED DENSITY (pu)	-10
6	DCAL (in)	16	10 (ft3) 0	30	COMPENSATED NEUTRON (pu)	-10
0	MINMK	20	TBHV		-0.25 CORRECTION (g/cc)	0.25
			0 (ft3) 10			



0	GAMMA RAY (GAPI)	150	ABHV	30	COMPENSATED DENSITY (pu)	-10
6	DCAL (in)	16	10 (ft3) 0	30	COMPENSATED NEUTRON (pu)	-10
0	MINMK	20	TBHV		-0.25 CORRECTION (g/cc)	0.25
			0 (ft3) 10			

Calibration Report

Database File 5268ddn.db
 Dataset Pathname pass3.2M
 Dataset Creation Tue Apr 27 19:33:10 2021

Serial-Model:
 Surface Cal Performed:
 Downhole Cal Performed:
 After Survey Verification Performed:

PROBE9-DILG
 Tue Apr 27 18:24:25 2021
 Wed Mar 11 11:31:19 2020
 Wed Mar 11 11:31:22 2020

Surface Calibration								
Loop:	Readings			References			Results	
	Air	Loop		Air	Loop		m	b
Deep	-0.014	0.629	V	0.000	400.000	mmho/m	720.000	-22.000
Medium	0.039	0.728	V	0.000	464.000	mmho/m	680.000	2.000
Internal:	Zero	Cal		Zero	Cal		m	b
Deep	0.011	0.610	V	0.000	400.000	mmho/m	667.135	-7.256
Medium	0.005	0.712	V	0.000	464.000	mmho/m	655.677	-3.102

Downhole Calibration								
	Readings			References			Results	
	Zero	Cal		Zero	Cal		m'	b'
Deep	0.000	0.000	mmho/m	14.508	388.384	mmho/m	1.000	0.000
Medium	0.000	0.000	mmho/m	166.367	504.400	mmho/m	1.000	0.000
LL3		7.500	V		1400.000	Ohm-m		
		0.000	V		20.000	Ohm-m		
		-7.200	V		4000.000	mmho-m		

After Survey Verification								
	Readings			Targets			Results	
	Zero	Cal		Zero	Cal		m'	b'
Deep	0.000	0.000	mmho/m	0.000	0.000	mmho/m	0.000	0.000
Medium	0.000	0.000	mmho/m	0.000	0.000	mmho/m	0.000	0.000
LL3		1.000	Ohm-m		1.000	Ohm-m		
		0.000	Ohm-m		0.000	Ohm-m		
		1.000	mmho-m		1.000	mmho-m		

Litho Density Calibration Report
 Serial: 003 Model: PRB

Master Calibration						Performed Fri Mar 05 10:51:07 2021		
	Background	Magnesium	Aluminum	Aluminum+Fe				
Window 1	1570.6	10682.1	3457.0	3096.9				cps
Window 2	1451.7	9432.7	3101.4	2816.5				cps
Window 3	1334.0	7160.6	2532.0	2369.3				cps
Window 4	370.4	373.1	366.4	370.9				cps
Long Space	0.0	7981.0	1649.7	1364.8				cps
Short Space	2.8	3522.0	2211.0	1823.6				cps
Rho		1.7100	2.5900	0.0000				g/cc
Pe		2.0000	2.7500	5.7900				
Rib Angle	: 43.5	Rib Slope	: 0.951	Density/Spine Ratio			: 0.535	
Spine Angle	: 73.5	Spine Slope	: 3.386	Spine Intercept			: -18.7	

Before Survey Verification						Performed Wed Dec 31 18:00:00 1969		
	Background	Magnesium	Aluminum	Aluminum+Fe				
Window 1	0.0	0.0	0.0	0.0				cps
Window 2	0.0	0.0	0.0	0.0				cps
Window 3	0.0	0.0	0.0	0.0				cps
Window 4	0.0	0.0	0.0	0.0				cps
Long Space	0.0	0.0	0.0	0.0				cps

Long Space	0.0	0.0	0.0	0.0	cps
Short Space	0.0	0.0	0.0	0.0	cps
Measured Rho		0.0000	0.0000	0.0000	g/cc
Measured Correction		0.0000	0.0000	0.0000	g/cc
Measured Pe			0.0000	0.0000	

After Survey Verification

Performed Wed Dec 31 18:00:00 1969

Window 1	0.0	0.0	0.0	0.0	cps
Window 2	0.0	0.0	0.0	0.0	cps
Window 3	0.0	0.0	0.0	0.0	cps
Window 4	0.0	0.0	0.0	0.0	cps
Long Space	0.0	0.0	0.0	0.0	cps
Short Space	0.0	0.0	0.0	0.0	cps
Measured Rho		0.0000	0.0000	0.0000	g/cc
Measured Correction		0.0000	0.0000	0.0000	g/cc
Measured Pe			0.0000	0.0000	

Compensated Neutron Calibration Report

Serial Number: 070808PMC
 Tool Model: NABORS

PRE-SURVEY VERIFICATION

Detector	Readings	Measured	Target
Short Space	cps		
Long Space	cps	pu	pu

POST-SURVEY VERIFICATION

Detector	Readings	Measured	Target
Short Space	cps		
Long Space	cps	pu	pu

Gamma Ray Calibration Report

Serial Number: 070558
 Tool Model: OPEN_GR
 Performed: Fri Apr 16 13:57:16 2021

Calibrator Value: 1.0 GAPI

Background Reading: 0.0 cps
 Calibrator Reading: 1.0 cps

Sensitivity: 0.3000 GAPI/cps