

SONIC
LOG



Company TREK AEC, LLC.
Well STAATZ #2
Field GREEN GARDEN
County ELLSWORTH State KANSAS

Location: API #: 15-053-21375-0000
1445' FSL & 1945' FEL
SW - SE - NW - SE
SEC 35 TWP 16S RGE 9W
Permanent Datum GROUND LEVEL Elevation 1739
Log Measured From KELLY BUSHING 8' A.G.L.
Drilling Measured From KELLY BUSHING

Company TREK AEC, LLC.
Well STAATZ #2
Field GREEN GARDEN
County ELLSWORTH
State KANSAS

Date	4/27/21		
Run Number	TWO		
Depth Driller	3330		
Depth Logger	3331		
Bottom Logged Interval	3323		
Top Log Interval	300		
Casing Driller	8 5/8"@389'		
Casing Logger	389		
Bit Size	7 7/8"		
Type Fluid in Hole	CHEMICAL MUD	CHLORIDES 3.300 PPM	
Density / Viscosity	9.4/53		
pH / Fluid Loss	9.5/7.2		
Source of Sample	FLOWLINE		
Rm @ Meas. Temp	.800@90F		
Rmf @ Meas. Temp	.600@90F		
Rmc @ Meas. Temp	.960@90F		
Source of Rmf / Rmc	MEASUREMENT		
Rm @ BHT	.656@110F		
Time Circulation Stopped	3.5 HOURS		
Time Logger on Bottom	7:30 P.M.		
Maximum Recorded Temperature	110F		
Equipment Number	922339		
Location	HAYS, KANSAS		
Recorded By	JEFF LUEBBERS		
Witnessed By	DOUG DAVIS		

<<< Fold Here >>>

All interpretations are opinions based on inferences from electrical or other measurements and we cannot and do not guarantee the accuracy or correctness of any interpretation, and we shall not, except in the case of gross or willful negligence on our part, be liable or responsible for any loss, costs, damages, or expenses incurred or sustained by anyone resulting from any interpretation made by any of our officers, agents or employees. These interpretations are also subject to our general terms and conditions set out in our current Price Schedule.

15-053-21375-0000 Comments

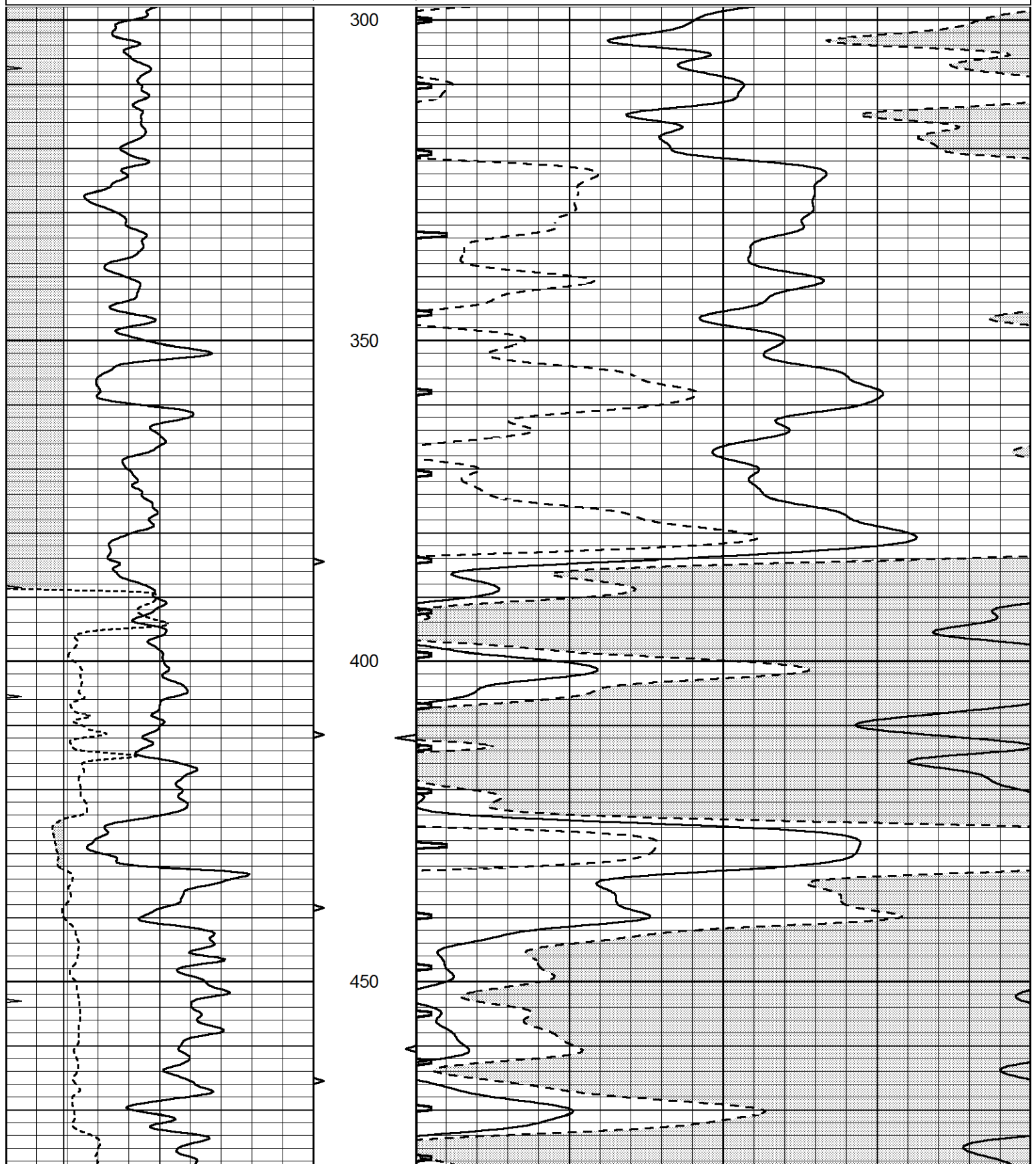
THANK YOU FOR USING ELI WIRELINE HAYS, KANSAS (785) 628-6395
DIRECTIONS
HOLYROOD, KS. (HWY 156 & AVE. T) 8E. ON "AVE. T" TO "12TH RD.", 1N. TO TANK BATTERY, W. & N. INTO

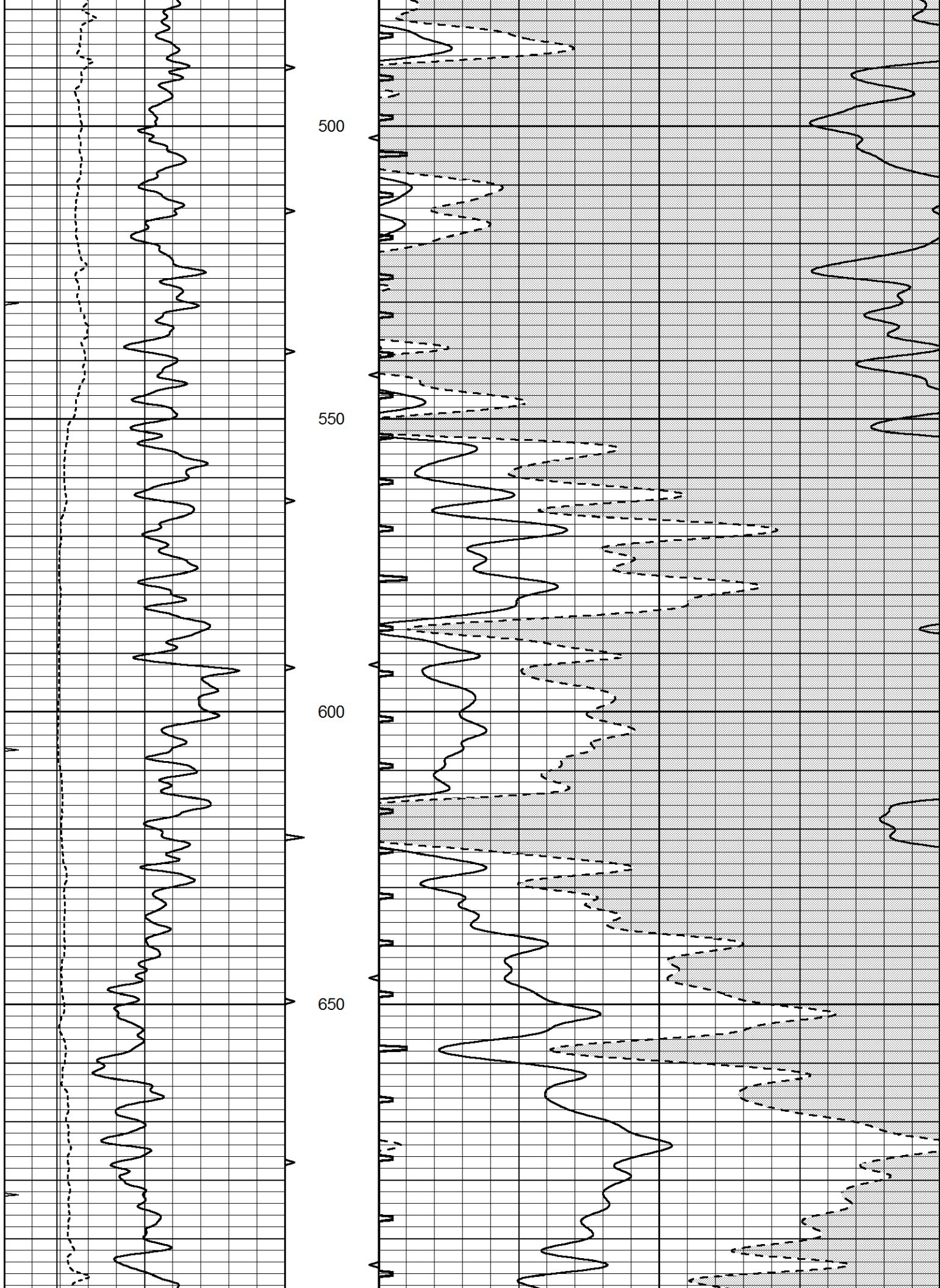


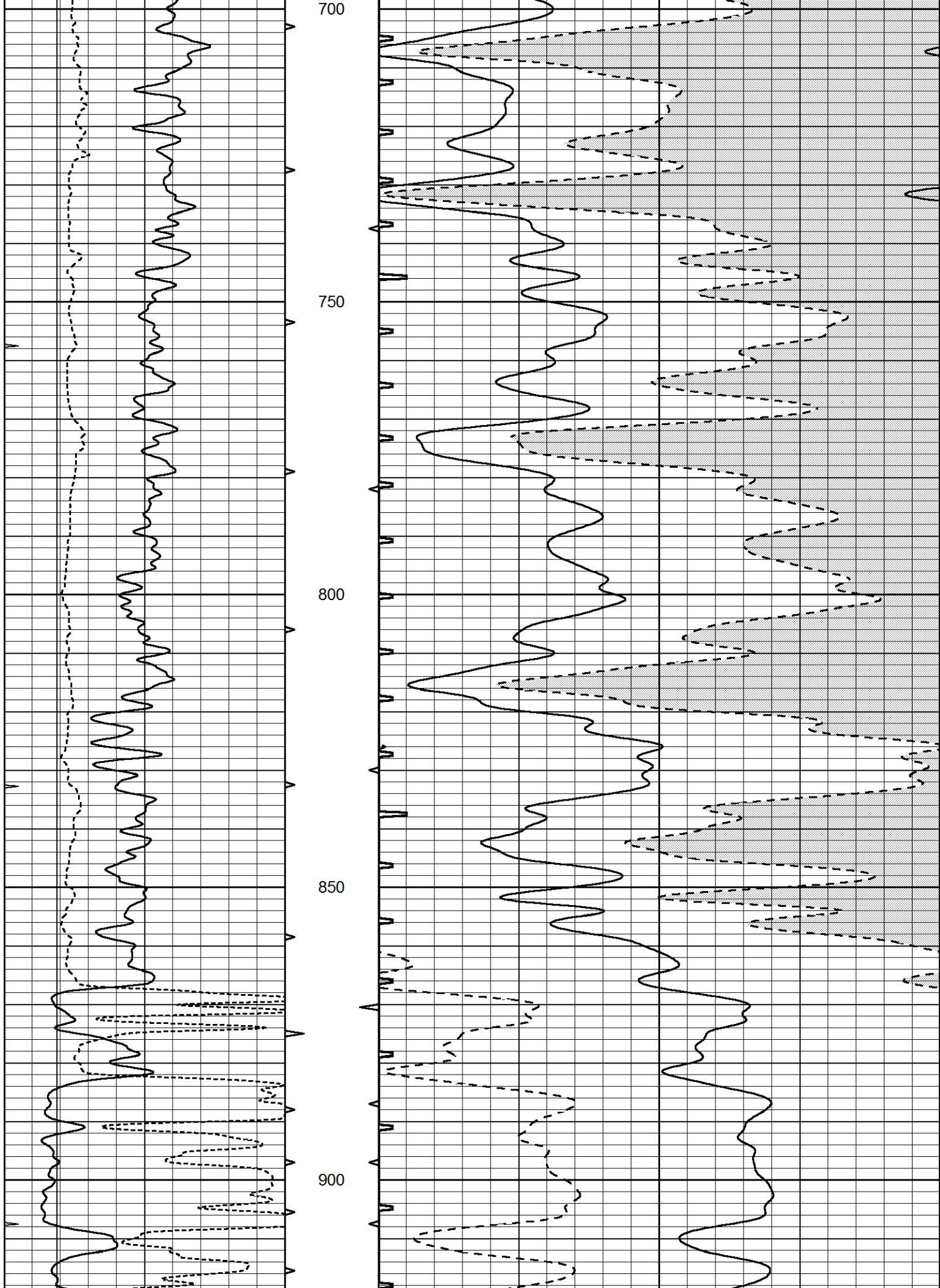
MAIN SECTION

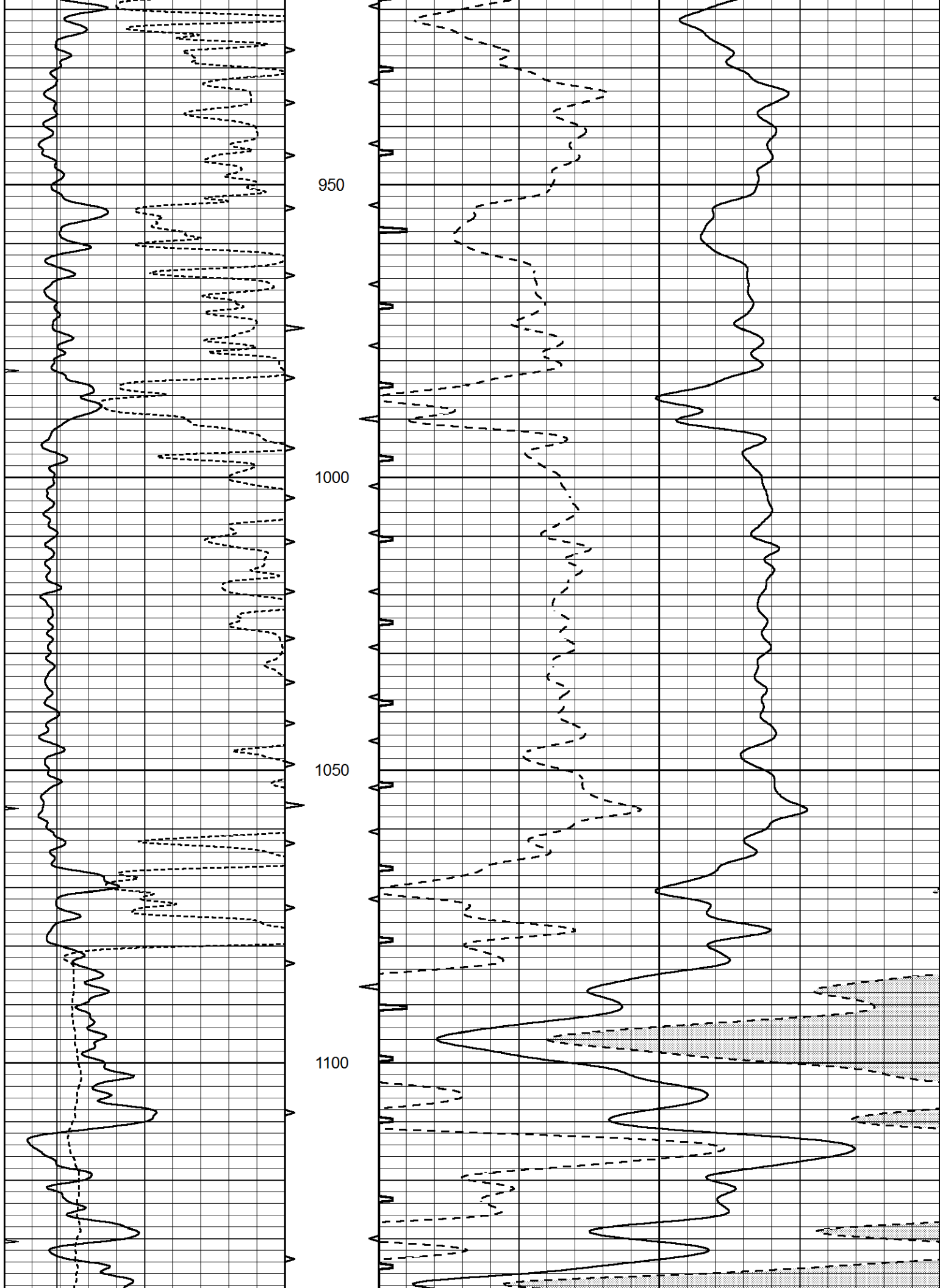
Database File 5268ddn.db
 Dataset Pathname pass6.1S
 Presentation Format slt
 Dataset Creation Tue Apr 27 20:49:21 2021
 Charted by Depth in Feet scaled 1:240

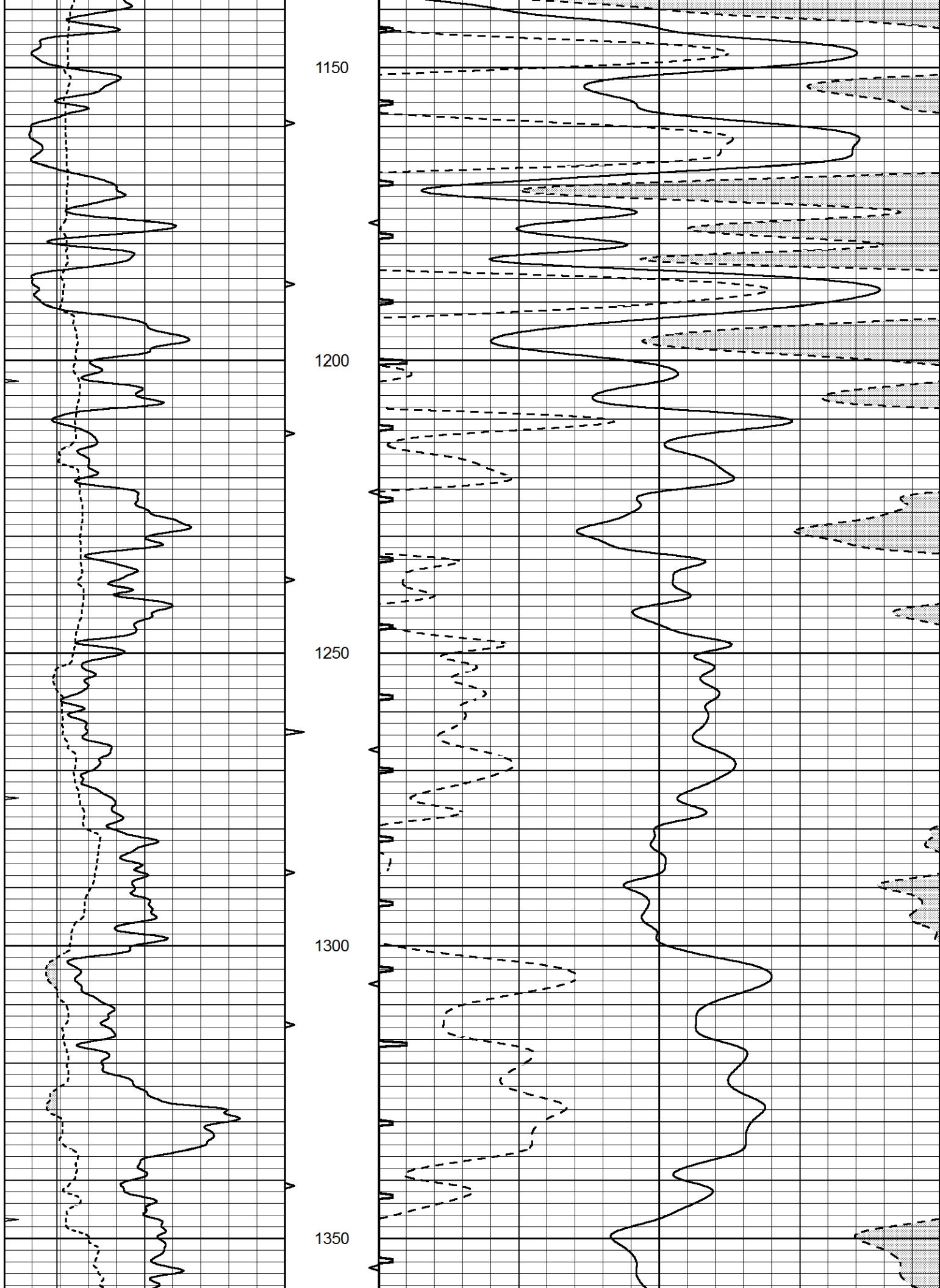
0	GAMMA RAY (GAPI)	150	ABHV	140	DELTA TIME (usec/ft)	40
6	CALIPER (in)	16	10 (ft3) 0	30	SONIC POROSITY (pu)	-10
0	MINMK	20	TBHV	0	ITT (msec)	20
			0 (ft3) 10			

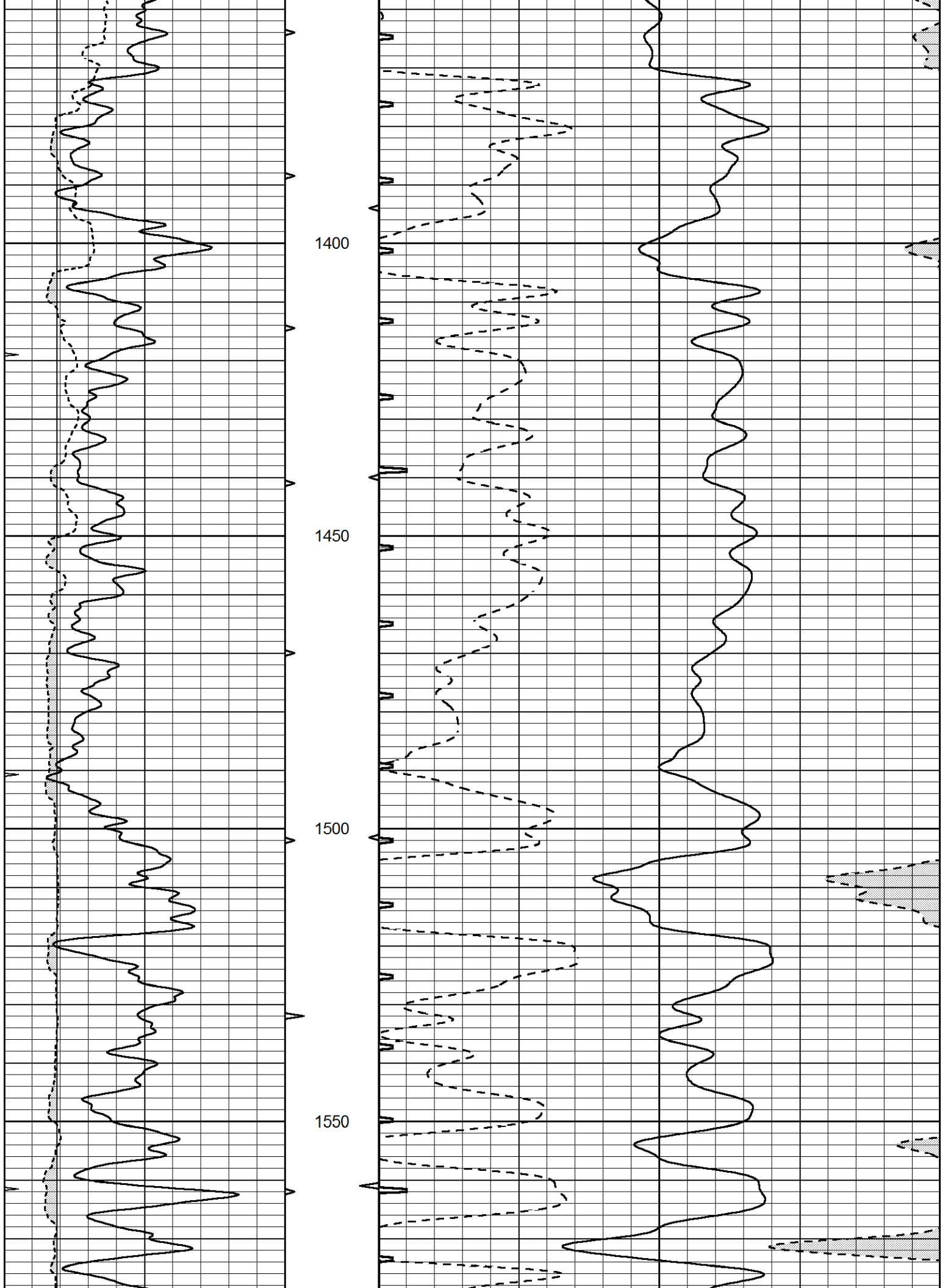


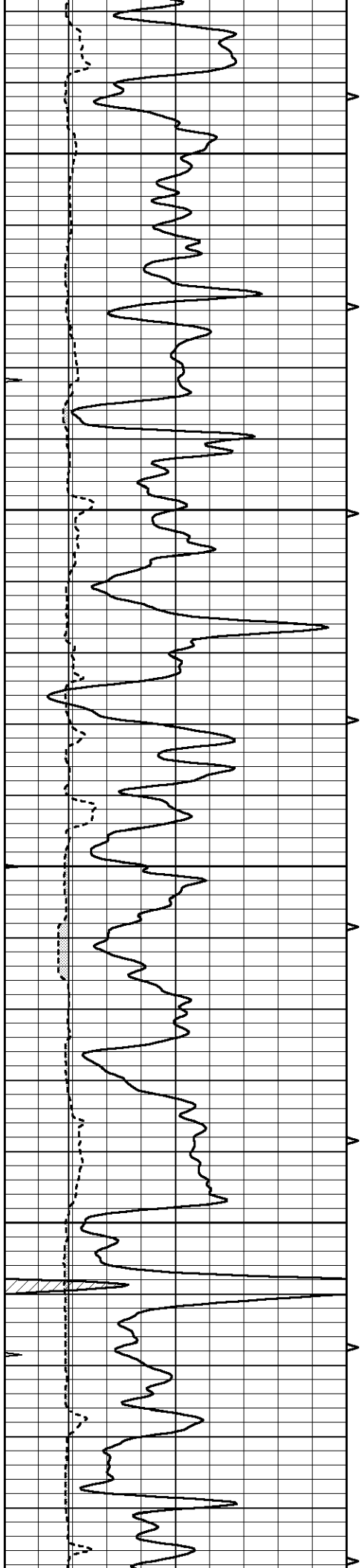










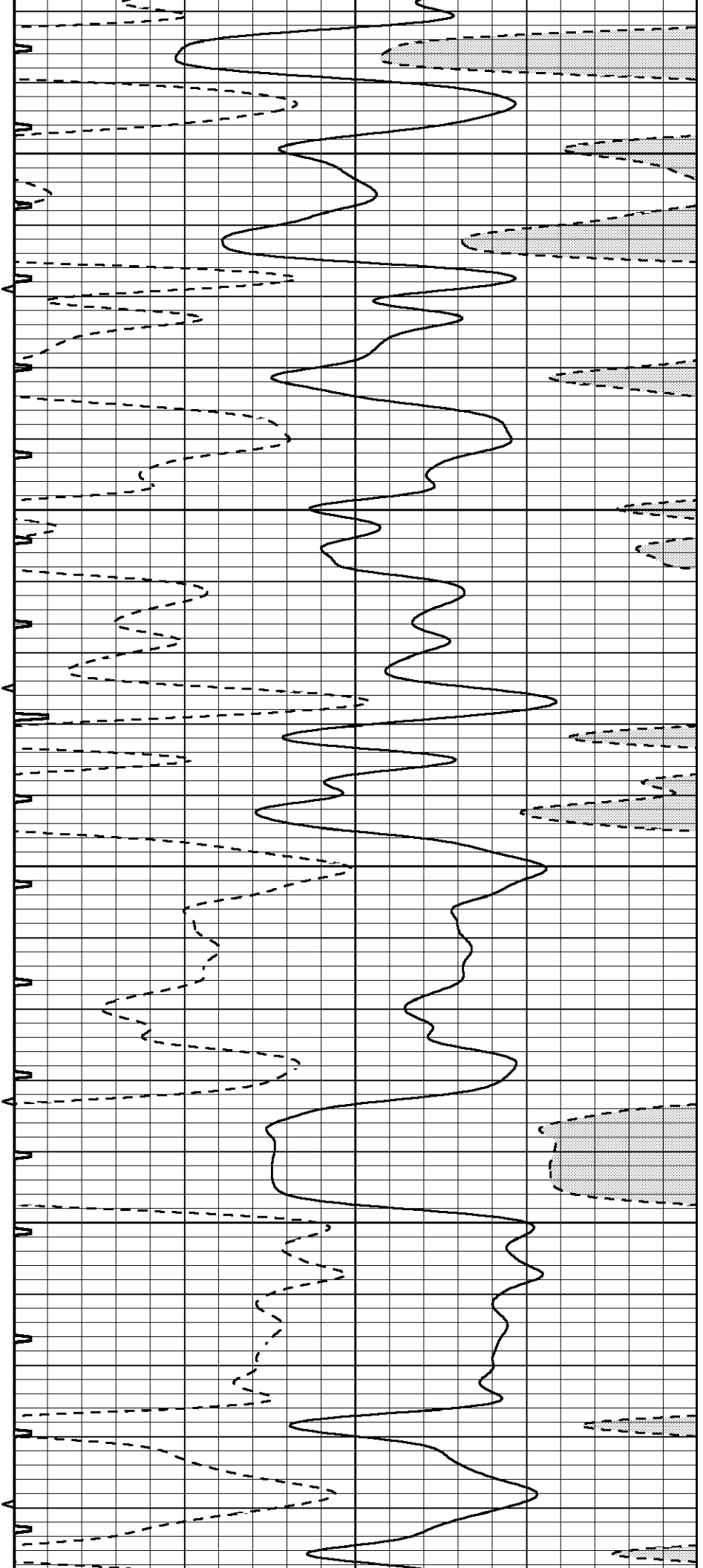


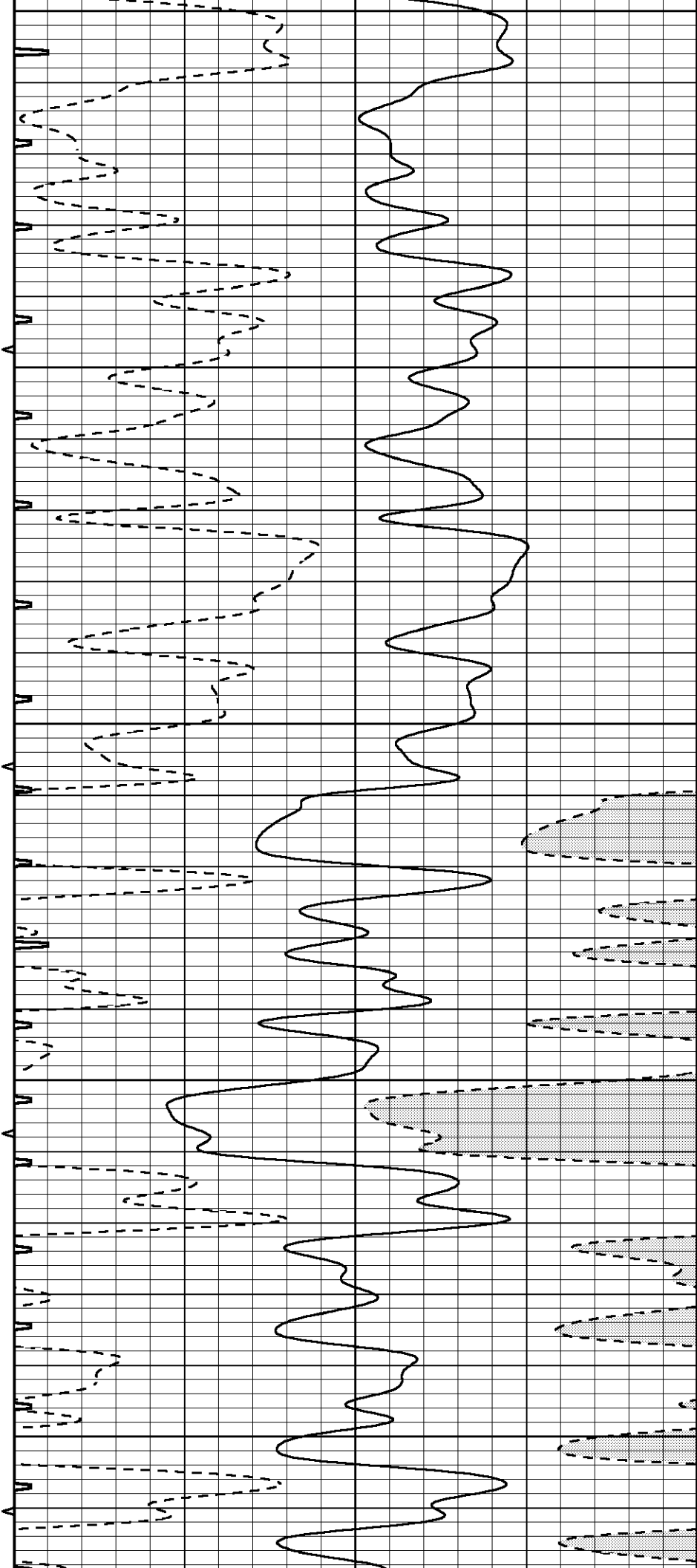
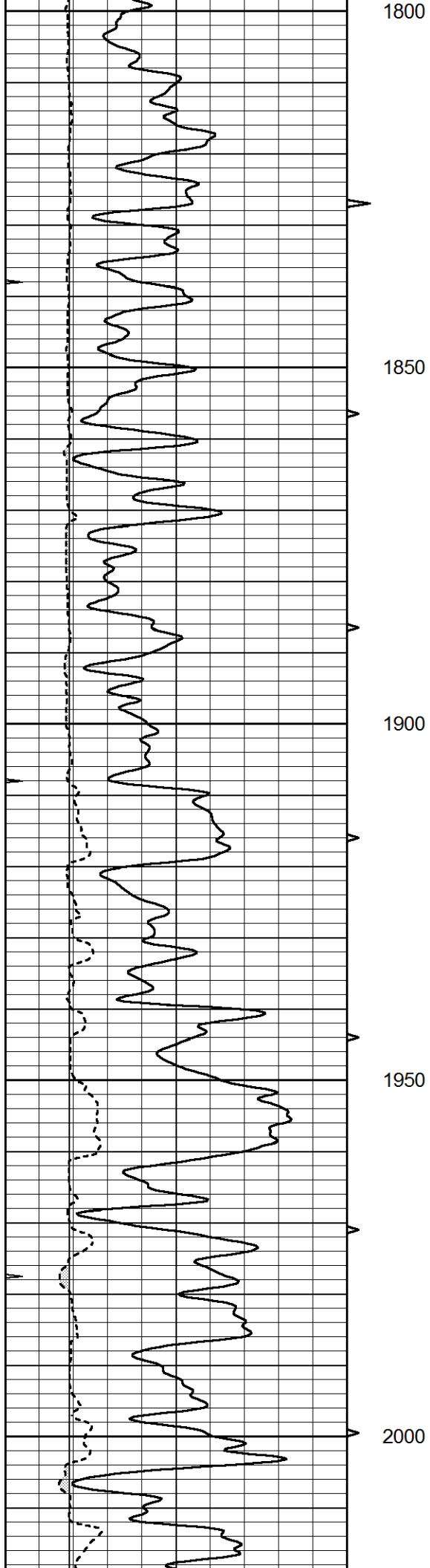
1600

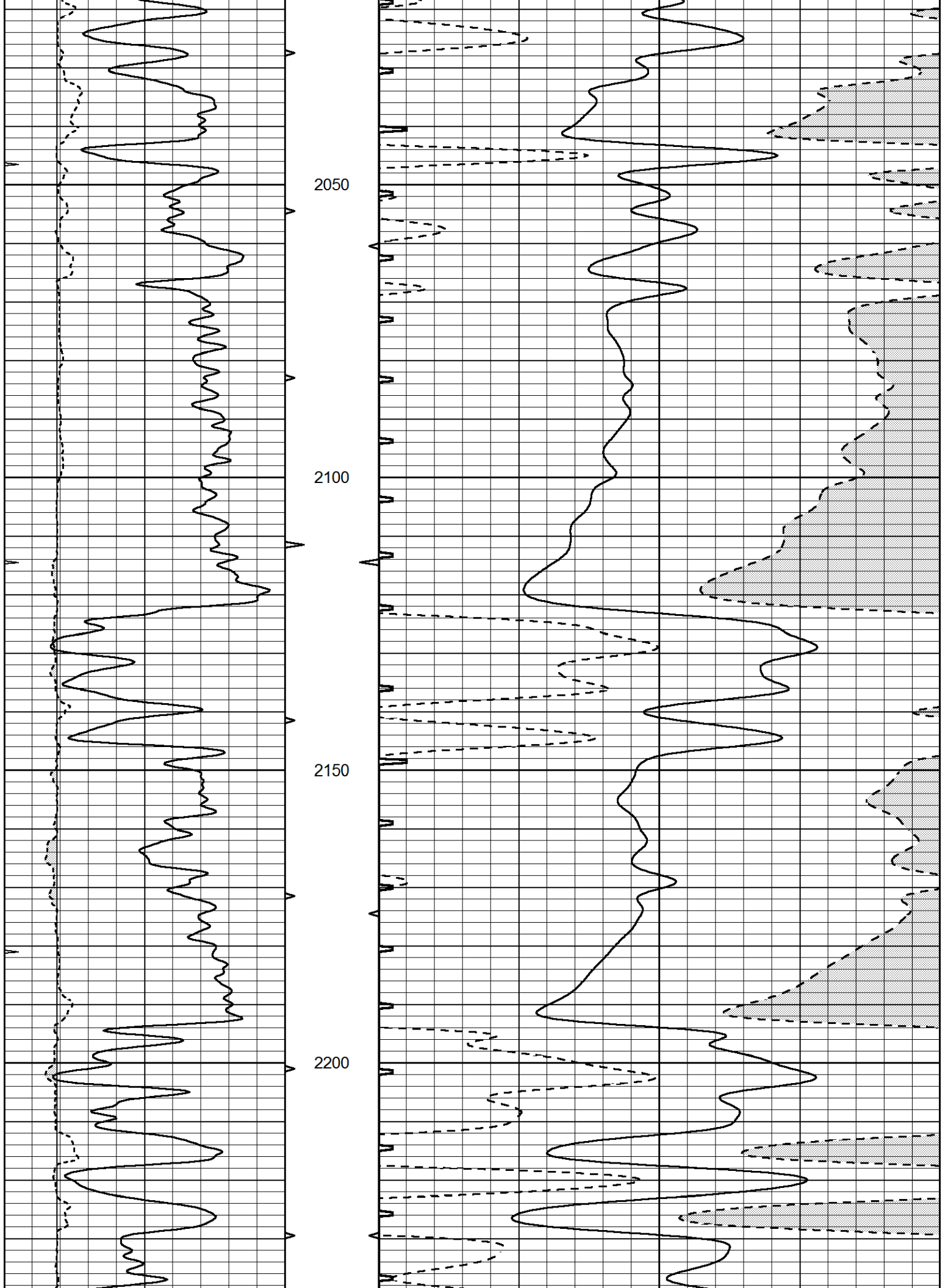
1650

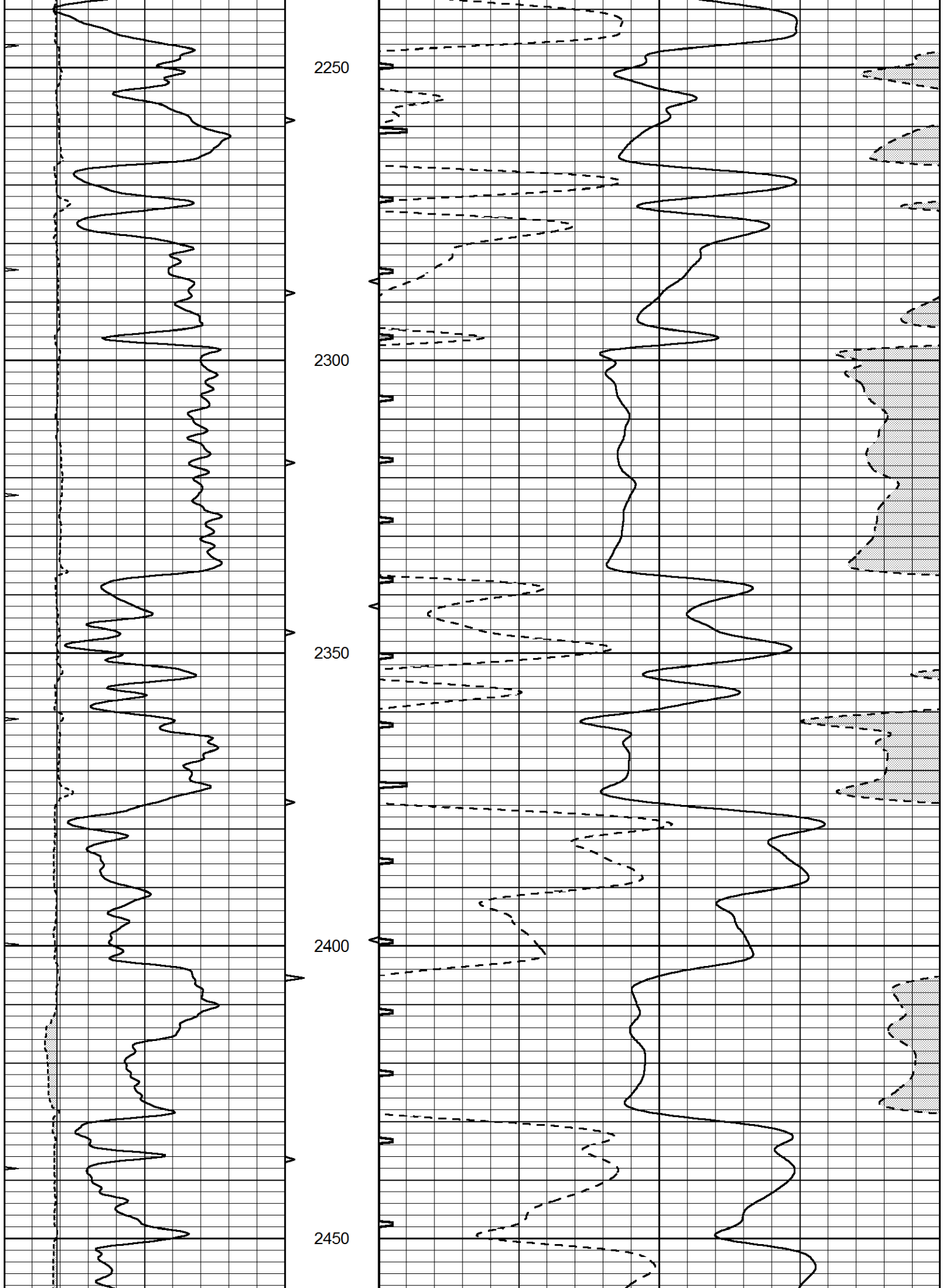
1700

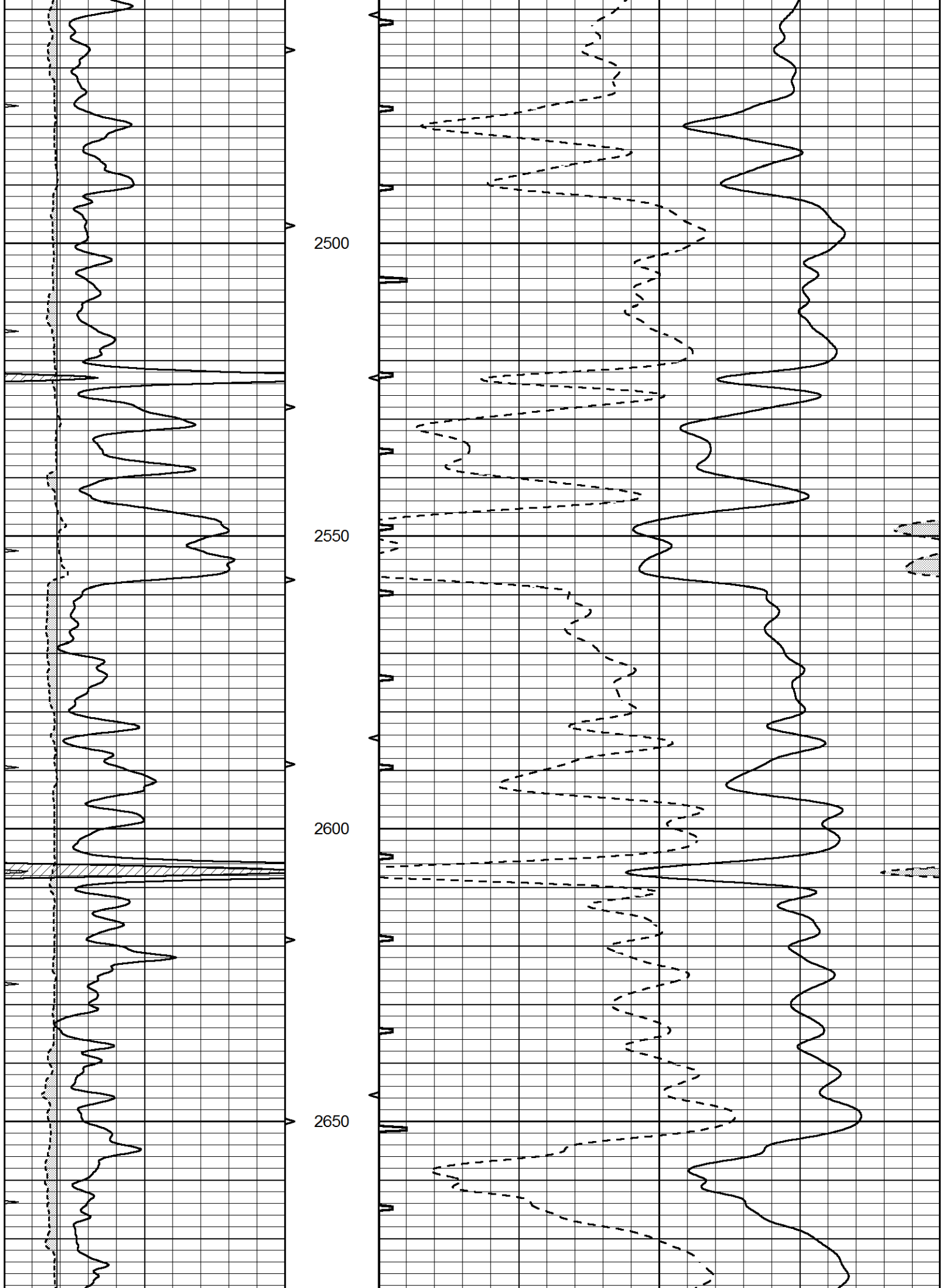
1750

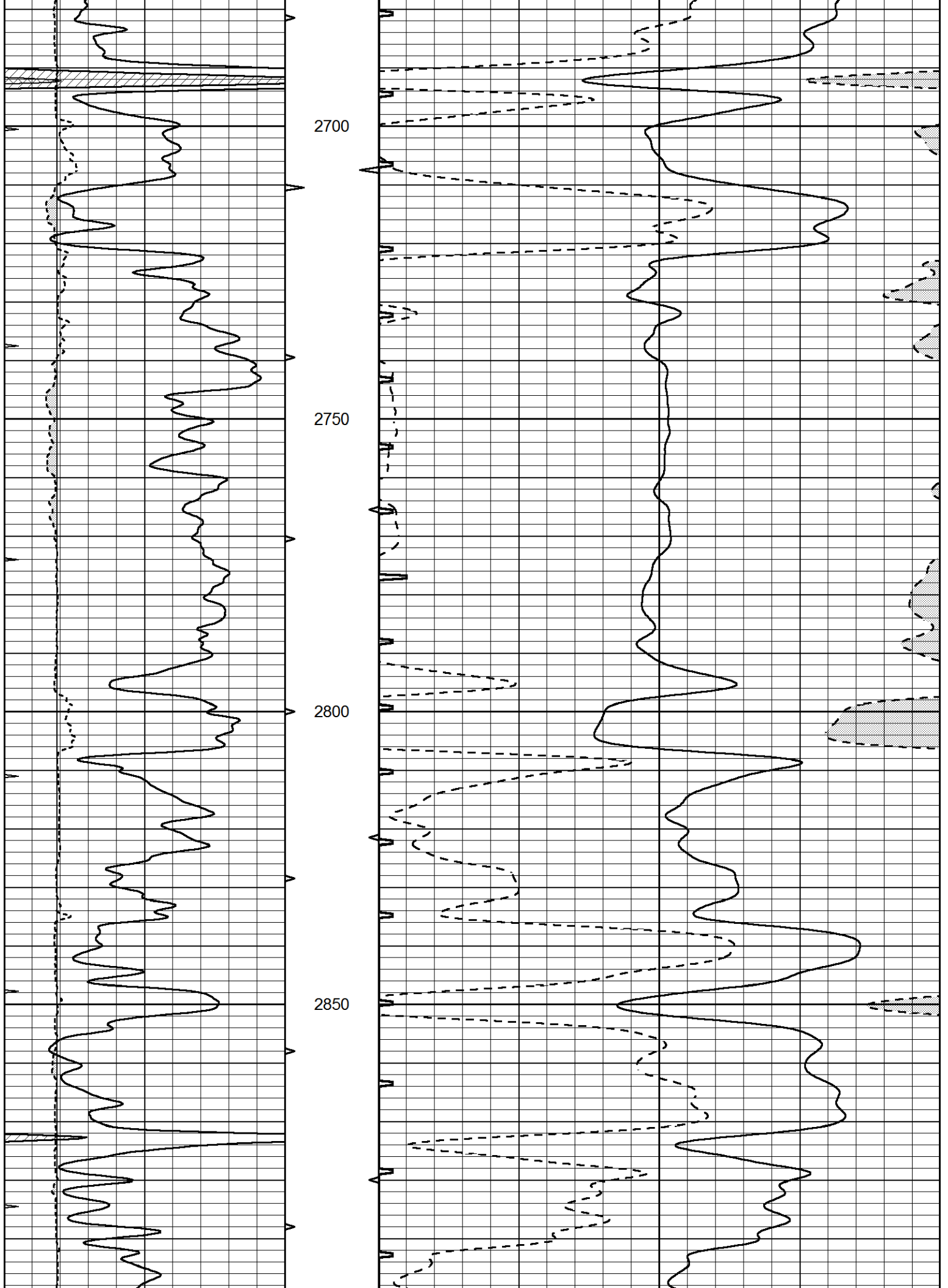


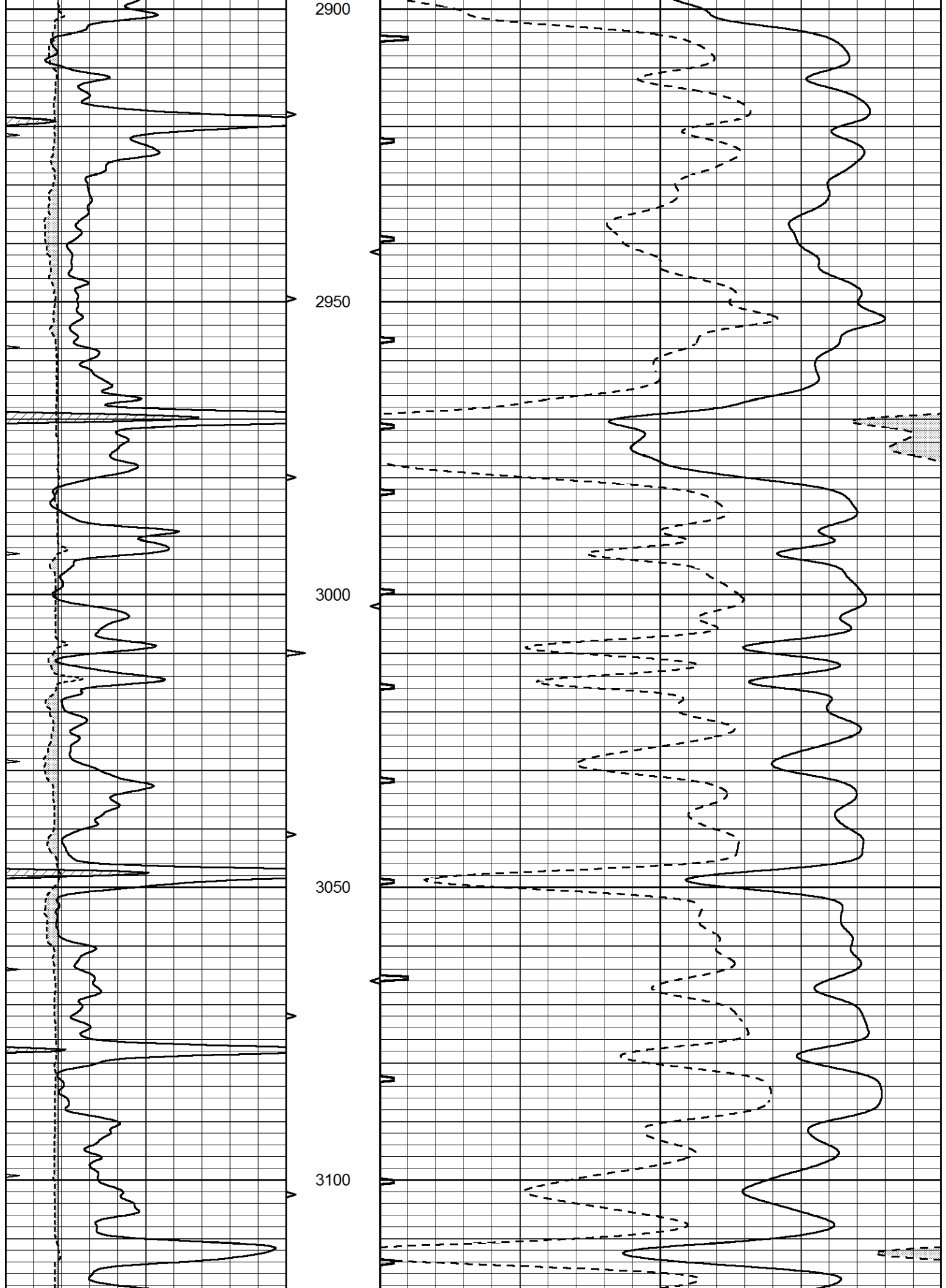


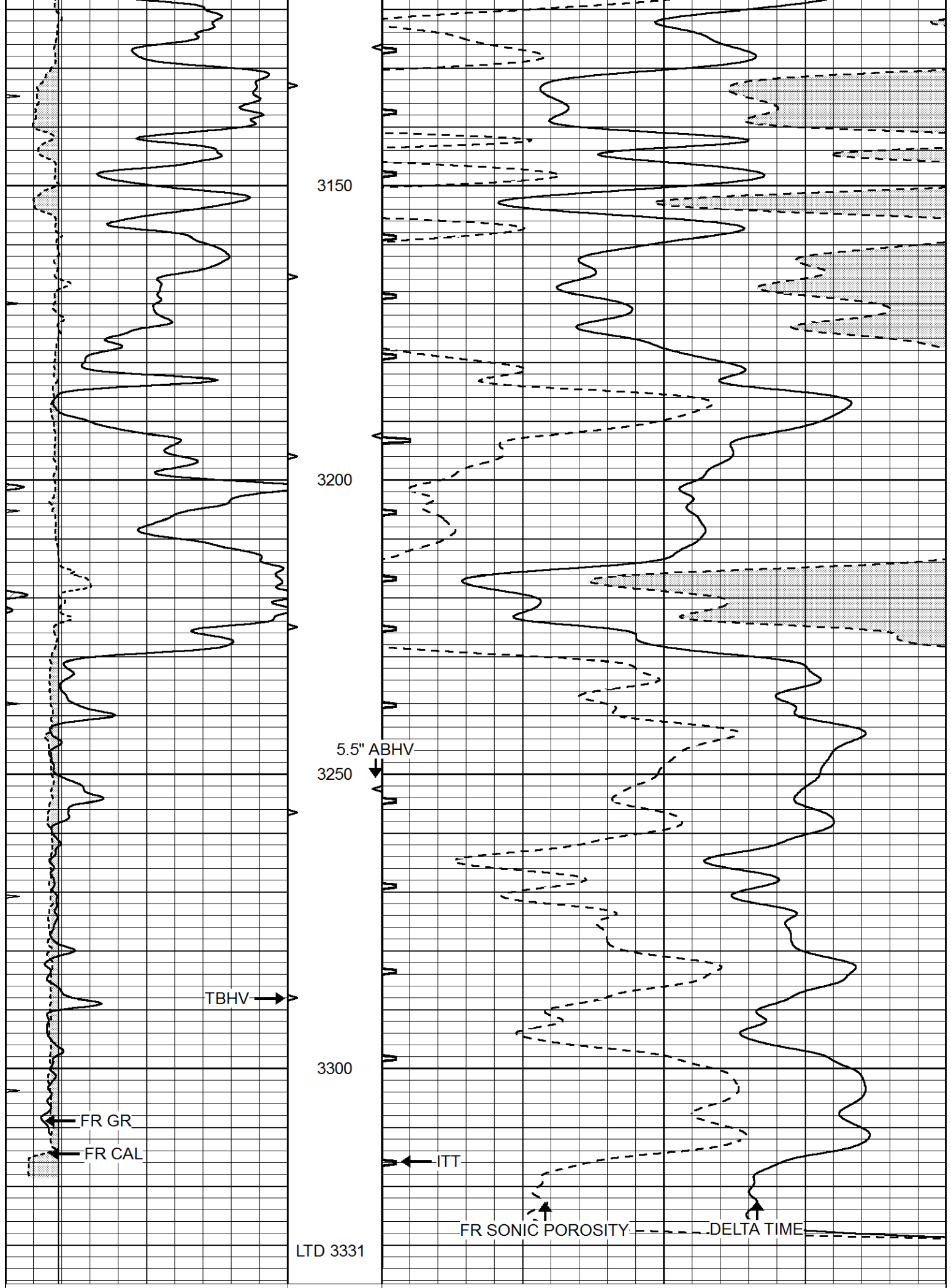












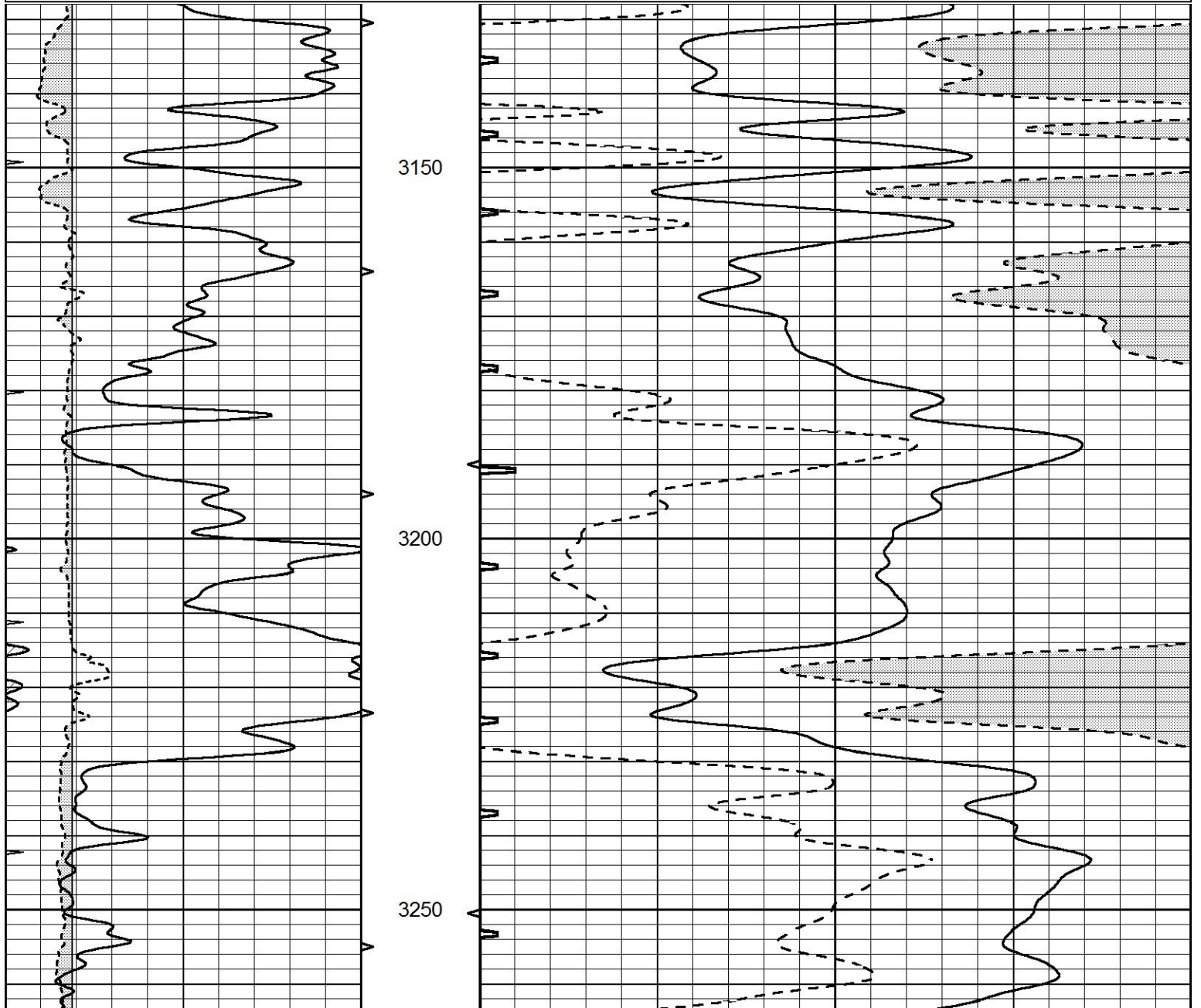
0	GAMMA RAY (GAPI)	150	ABHV	140	DELTA TIME (usec/ft)	40	
6	CALIPER (in)	16	10 (ft3)	0	30	SONIC POROSITY (pu)	-10
0	MINMK	20	TBHV	0	ITT (msec)	20	
			0 (ft3)	10			

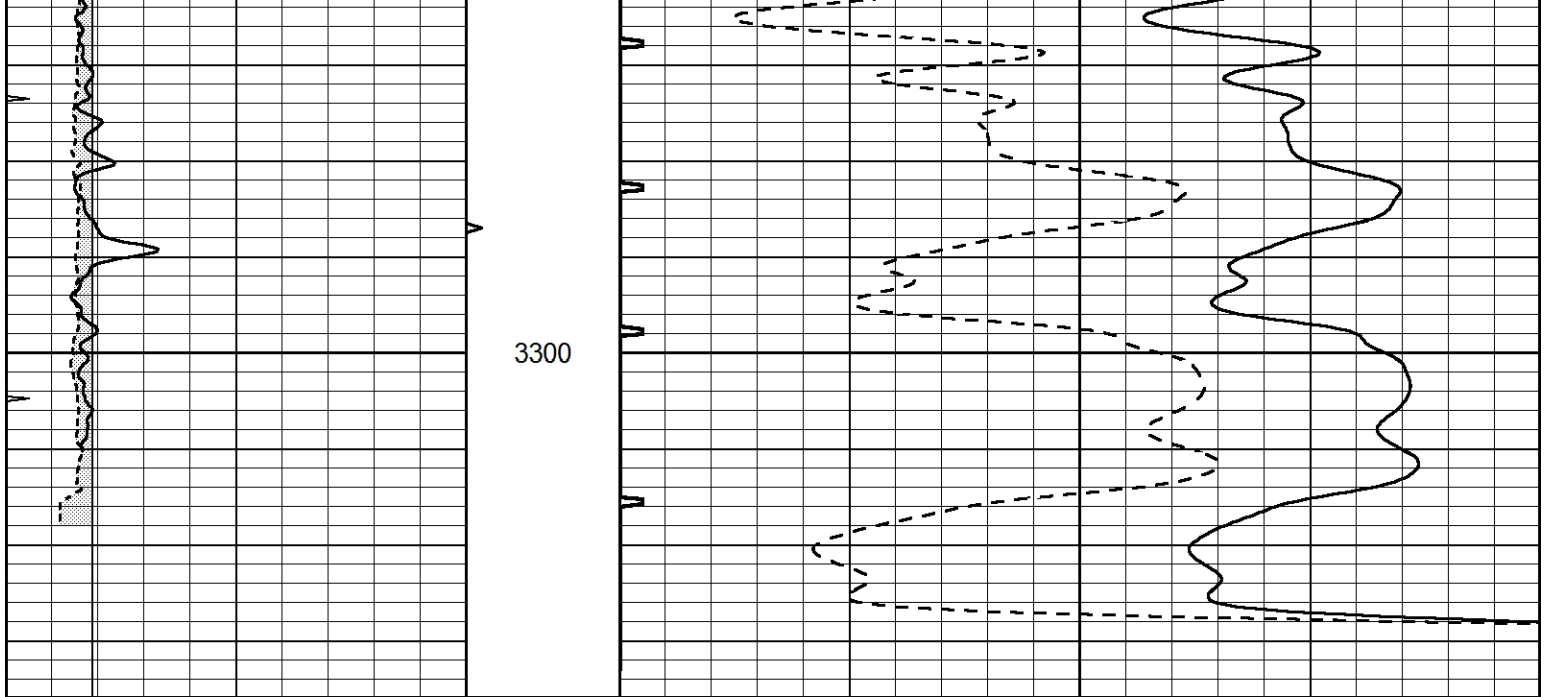


REPEAT SECTION

Database File 5268ddn.db
 Dataset Pathname pass5.3
 Presentation Format slt
 Dataset Creation Tue Apr 27 19:59:53 2021
 Charted by Depth in Feet scaled 1:240

0	GAMMA RAY (GAPI)	150	ABHV	140	DELTA TIME (usec/ft)	40	
6	CALIPER (in)	16	10 (ft3)	0	30	SONIC POROSITY (pu)	-10
0	MINMK	20	TBHV	0	ITT (msec)	20	
			0 (ft3)	10			





0	GAMMA RAY (GAPI)	150	ABHV	140	DELTA TIME (usec/ft)	40
6	CALIPER (in)	16	10 (ft3) 0	30	SONIC POROSITY (pu)	-10
0	MINMK	20	TBHV	0	ITT (msec)	20
			0 (ft3) 10			