

HEADER
WellSight Systems
Scale 1:240 (5"=100') Imperial

Well Name: STAATZ #2
Location: Section 35 - Township 16 South - Range 9 West
Licence Number: 35-053-21,375. 0000 Region: Ellsworth County, KS.
Spud Date: 21 April 2021 Drilling Completed: 27 April 2021
Surface Coordinates: SW SE NW SE
(1,445' FSL & 1,945' FEL)

Bottom Hole
Coordinates:
Ground Elevation (ft): 1,739' K.B. Elevation (ft): 1747'
Logged Interval (ft): 1000' To: 3330' Total Depth (ft): 3330'
Formation: Permian ----> Arbuckle
Type of Drilling Fluid: Chemical; Low Solids (non-dispersed)

Printed by MUD.LOG from WellSight Systems 1-800-447-1534 www.WellSight.com

OPERATOR

Company: Trek AEC, LLC.
Address: 200 West Douglas, Suite 101
Wichita, Kansas 67202-3001

GEOLOGIST

Name: Doug Davis
Company: D-EX PRODUCTION COMPANY
Address: 1231 North Denene
Wichita, Kansas 67212
Cell: (316) 641-4469

2021

DAILY DRILLING STATUS -- APRIL

2021

12-1/4" Hole

21 April --- Spud @ 7pm.
Drill to 396'.
Run 8-5/8" casing (23#)
Set casing @ 389.44'.
Cemented w/ 180 sx
80/20 POZ + 3%CC/2%Gel.
Cement did circulate.

22 April --- Plug down @ 3am.
WOC.

7-7/8" Hole

22 April --- 7am @ 396'.
Under Surface Casing @ 1:15pm.

23 --- 7am @ 1,584'.
24 --- 7am @ 2,350'.
25 --- 7am @ 2,935'.
DST #1 (L-KC "J") 3,008'-3,030'.

7-7/8" Hole

26 April --- 7am @ 3,044'.
DST #2 (Arbuckle)
3,220'-3,232'.

27 --- 7am @ 3,232'.
RTD (3,330') @ 3pm.

DSTs

DST #1 3008-3030,
30"-30"-30"-30"
Weak Blow throughout
Rec- 31' Oil Spotted Mud
Ihp 1518#
IFP 25-24#
ISIP 562#
FFP 28-27#
FSIP 457#
FHP 1512#
BHT 101

DST #2 3220-3232
30"-60"-30"-60"
Strong Blow Throughout
Rec- 220' GIP, 535' CGO,
64' GMCO
IHP 1595#
IFP 32-139#
ISIP 1156#
FFP 136-233#
FSIP 1154#
FHP 1538#

BHT 102

HOLE DEVIATION (396' - 3,330')

DEPTH / TVD	--- INCLINATION	AZIMUTH	NORTH	SOUTH	EAST	WEST	DOGLEG deg/100'
396' /	--- 0.75 (Surface)						
3,330' /	--- 0.75 (RTD)						

STRAP - None Taken.

Board:
Strap:
Diff:

BIT RECORD

DATE	SIZE	TYPE	JET SIZE	DEPTH IN / OUT	CUM. FT.	HOURS	ROP
21 April 2021	12-1/4"	Baker PL516	14 - 14 - 14	0' / 306'	396'	2.75	144.0
22 April 2021	7-7/8"	JC 117	16 - 16 - 16	396' / 3,330'	2,934'	67.75	43.3

ROCK TYPES

POROSITY 	LITHOLOGY 				STRINGER 	
---------------------	----------------------	--	--	--	---------------------	--

ACCESSORIES

FOSSIL

- Algae
- Amph
- Belm
- Bioclst
- Brach
- Bryozoa
- Cephal
- Coral
- Spore
- Crin
- Echin
- Fish
- Foram
- Fossil
- Gastro

- Oolite
- Ostra
- Pelec
- Pellet
- Pisolite
- Plant
- Strom

MINERAL

- Mica
- Anhy
- Arggrn
- Arg
- Bent
- Bit
- Breclrag

- Calc
- Chalk
- Carb
- Chtdk
- Chtlt
- Dol
- Feldspar
- Ferrpel
- Ferr
- Glau
- Gyp
- Hvymin
- Kaol
- Marl
- Minxl
- Nodule

- Phos
- Pyr
- Salt
- Sandy
- Silt
- Sil
- Sulphur
- Tuff
- Copper
- Ooliticastic
- Oolite
- Sucrosic
- Dark specks

STRINGER

- Calc dol
- Silty dol
- Anhy
- Arg
- Bent
- Coal
- Dol
- Gyp
- Ls
- Mrst
- Calc dol
- Sltstrg
- Ssstrg
- Chalk
- New symbol

OTHER SYMBOLS

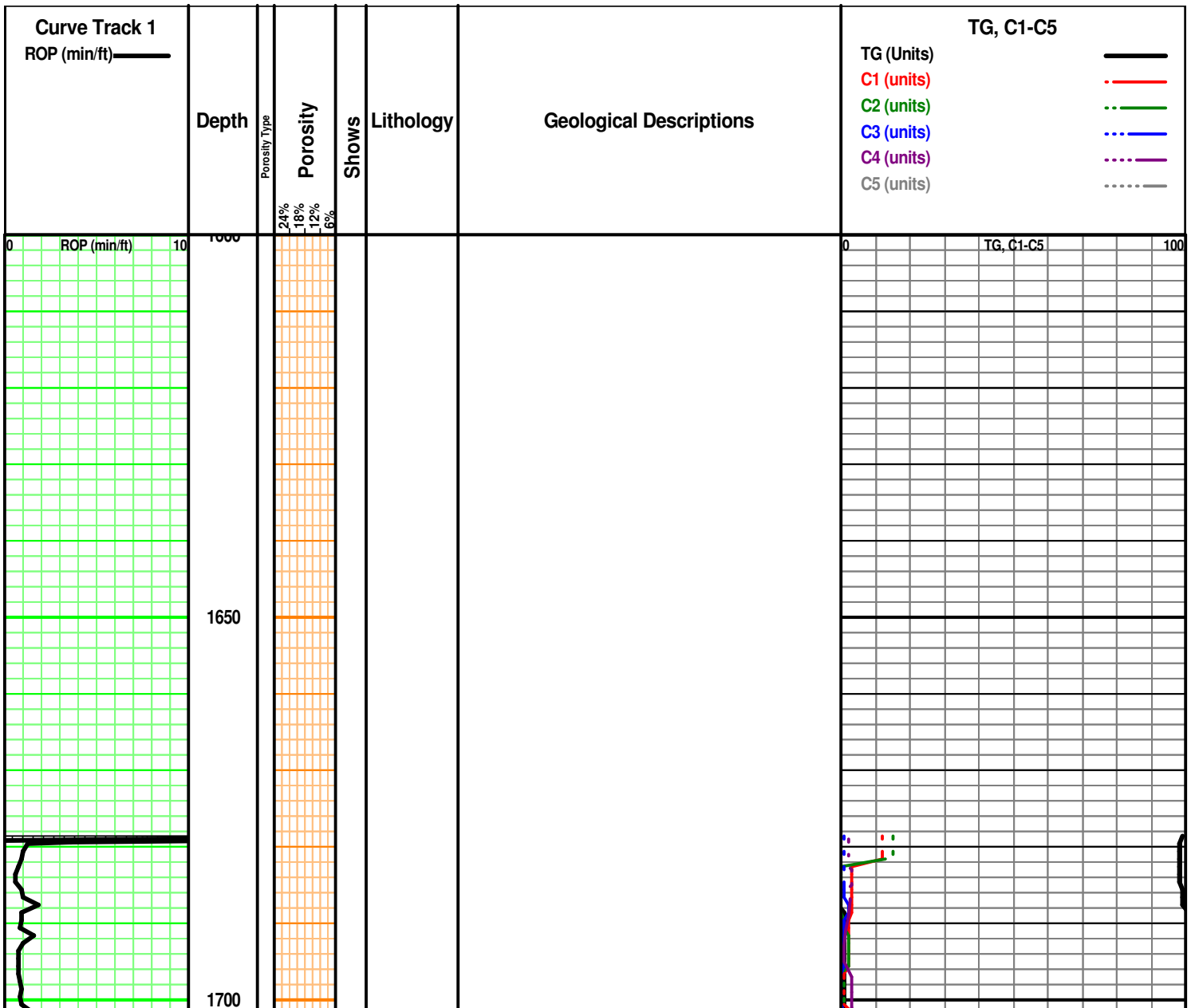
ACTIVITY

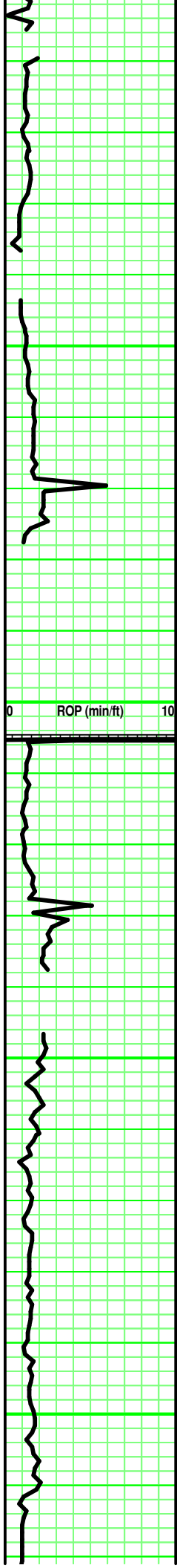
- Lost circluation
- Circulate for same

- Circulate for same
- Rtd
- Trip

- Connection
- Rft

- Sidewall



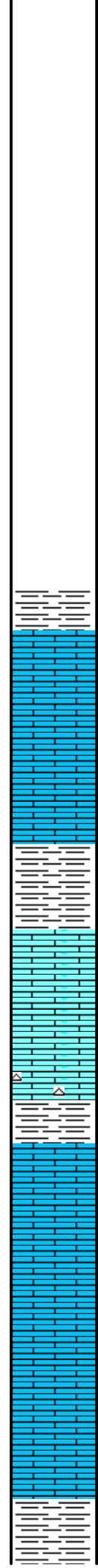
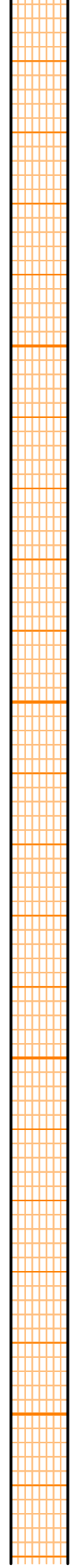


1750

1800

1850

1900



Sh- Gry to Dk Gry

Ls- Tan to Lt Brn, Fxln, Fos, NVP, NS

Ls.- Crm to Tan, Fxln, Fos, NVP, NS

Sh- Gry to Grgry-Grn

Ls- Crm to Tan , Fxln, NVP NS

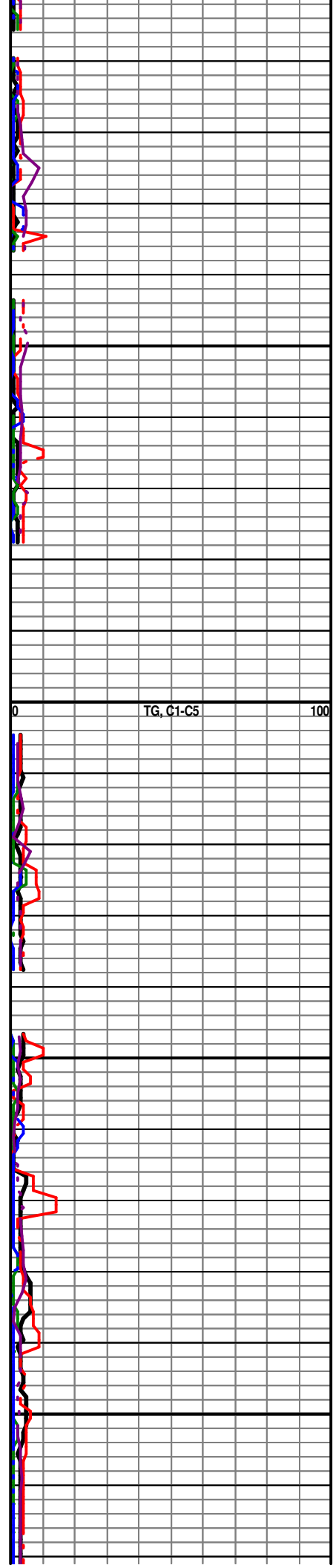
Permian Admire

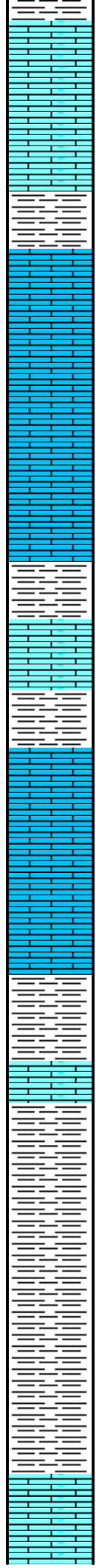
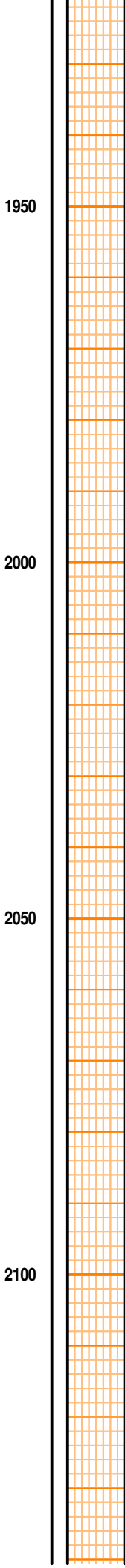
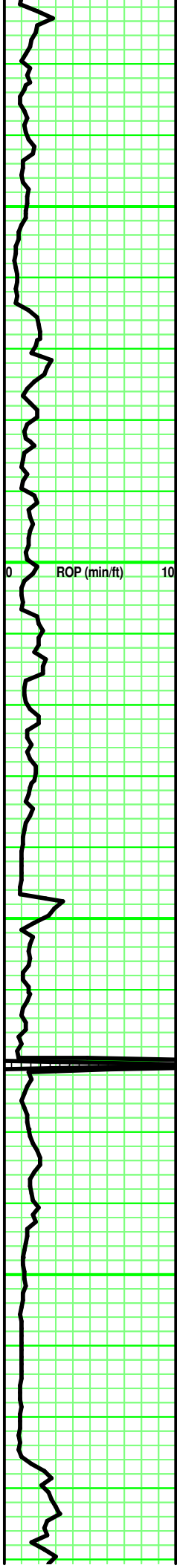
Ls-Crm to Tan, Fxln, NVPor, No Shows

Ls- Tan/Lt Gry-Brn, Fxln, Fos, NVP, NS

Indian Cave No SS

Sh- Gry to Dk Gry No sand





Penn Wabaunsee
Ls-^{*} Gry-Brn, Fxln, NVP, NS

Ls- Crm to Tan, Fxln, NVP NS

Sh- Grn to Gry

Ls- Crm To Tan Fxln, NVP NS

Ls- Crm, Fxln, NVP, NS

Sh- Gry

Ls- Lt Gry, Fxln, NVP, NS

Sh- Gry Red

Ls- Crm to Tan, Fxln, NVP, NS

Ls- Tan to Lt Brn, Fxln Fos, NVP, NS

Sh- Gry

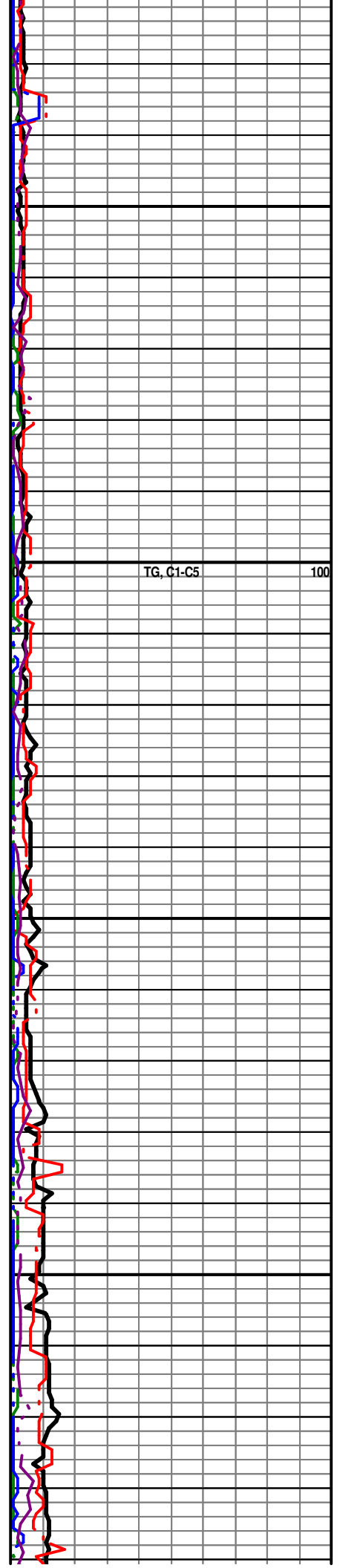
Ls- Tan to Brn Fxln NVP NS

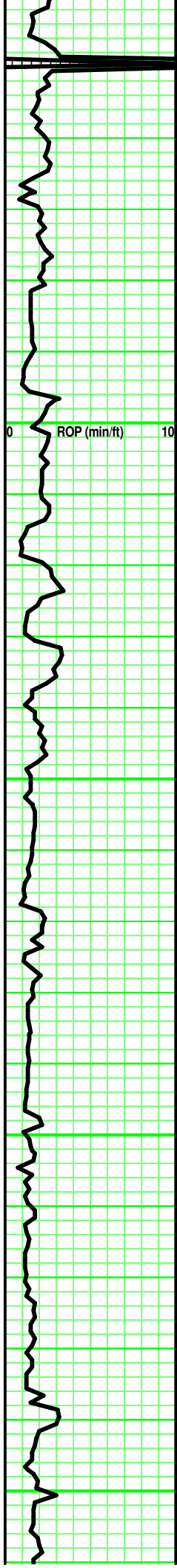
Sh- Gry to Dk Gry

Sh- Gry

TARKIO

Ls- Brn to Crm, Fxln, Fos NVP NS





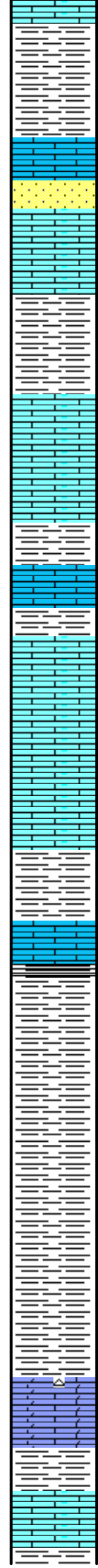
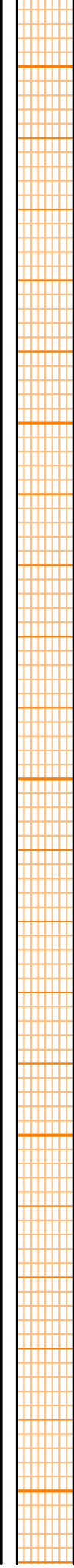
2150

2200

2250

2300

2350



Sh- Gry to Dk Gry

Ls- Crm to Tan, Fxln, Fos, NVP, NS

Ss- Clr to Lt GRy, Qtz, Mica, VFGnd, Pr to Fr Inter-Gran Por, NS,

Ls- Lt Gry, Fxln, NVP, NS

Sh- Gry

Ls- Crm to Tan, Fxln, Fos, NVP NS

Sh- Gry, NO SS

Ls- Crm to Tan, Fxln, Fos, NVP NS

Sh- Gry no SS

Ls- Crm to Tan, Fxln, Fos, NVP, NS

Sh- Gry, No SS

Ls- Crm to Tan, Fxln, Fos, NVP, NS

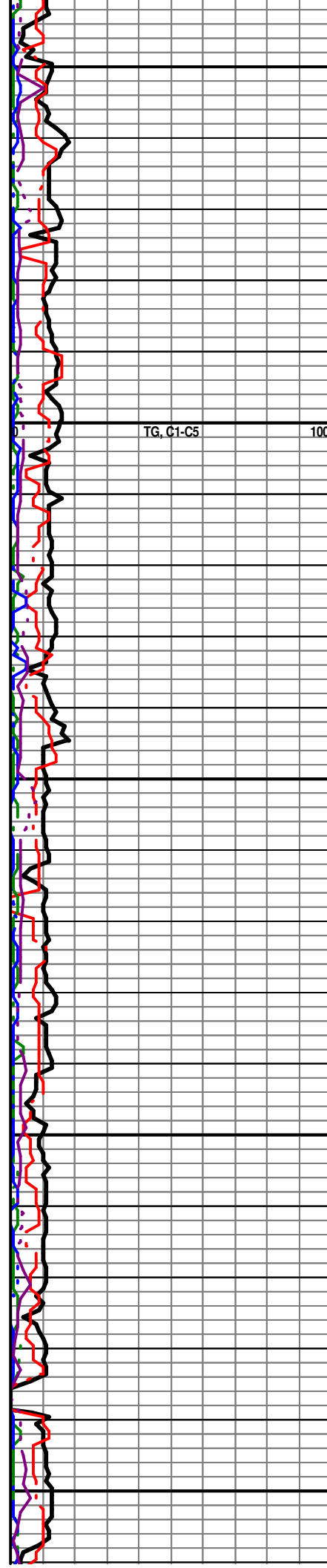
Sh- Gry

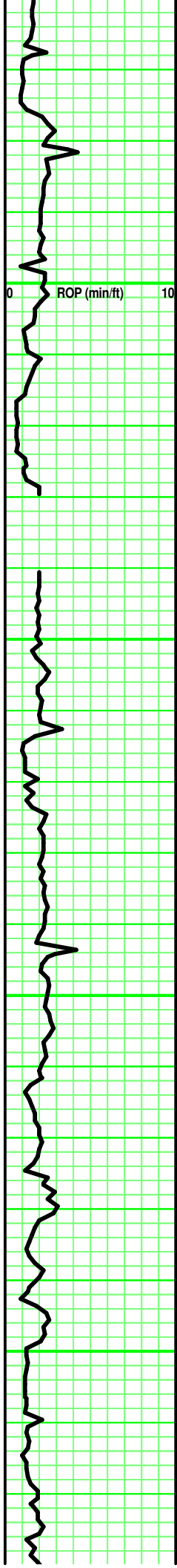
Sh- Gry

Howard Ls.
Ls.- Tan, Fxln, NVP, NS

Sh- Gry

Ls- Crm to Tan, Fxln, NVP, NS



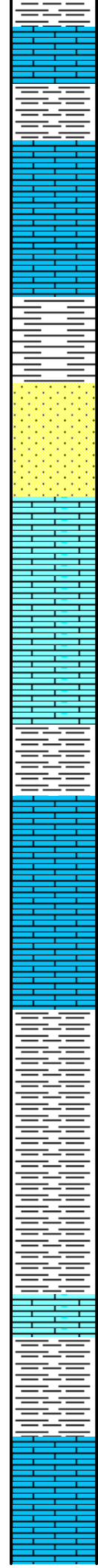
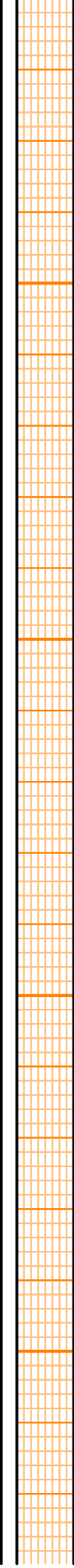


2400

2450

2500

2550



Sh- Gry

Ls- Crm to Tan, Fxln, NVP, NS

Sh - Gry

Ls- Crm to Tan to Lt Brn, Fxln, Fos, NVP, NS

Ls- Lt Gry, Fxln, NVP NS

Sh - Gry

Severy Ss
Ss- Qtz, Lt Gry to Clr, VFgnd, Calc, Mica, Fri, Fr
Inter-gran Por, NS NSGas Detec.

Topeka Ls.
Ls- Lt Gry to Crm to Tan, Fxln, Fos, NVP, NS

Ls- Crm to Tan , Fxln, NVP NS

Sh- Gry

Ls- Crm to Tan, Fxln, Fos, NVP NS

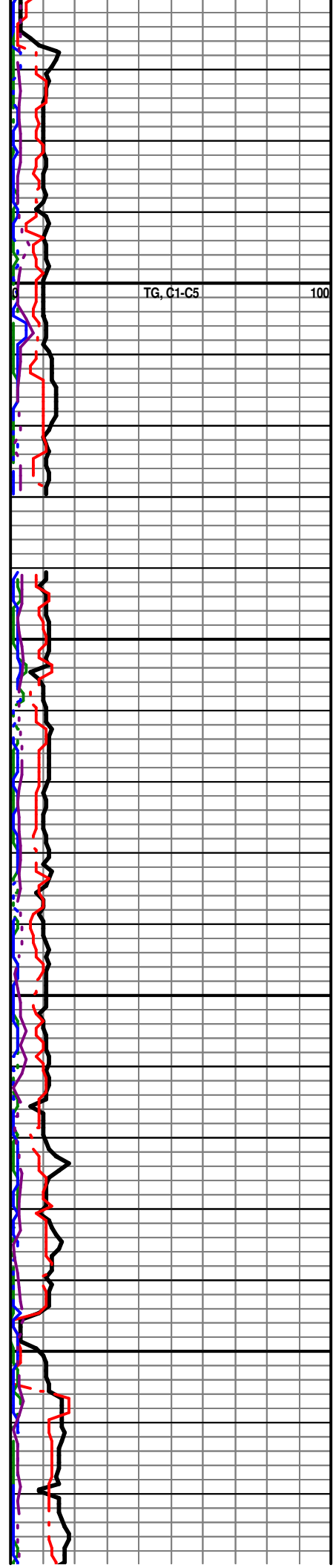
Sh- Gry

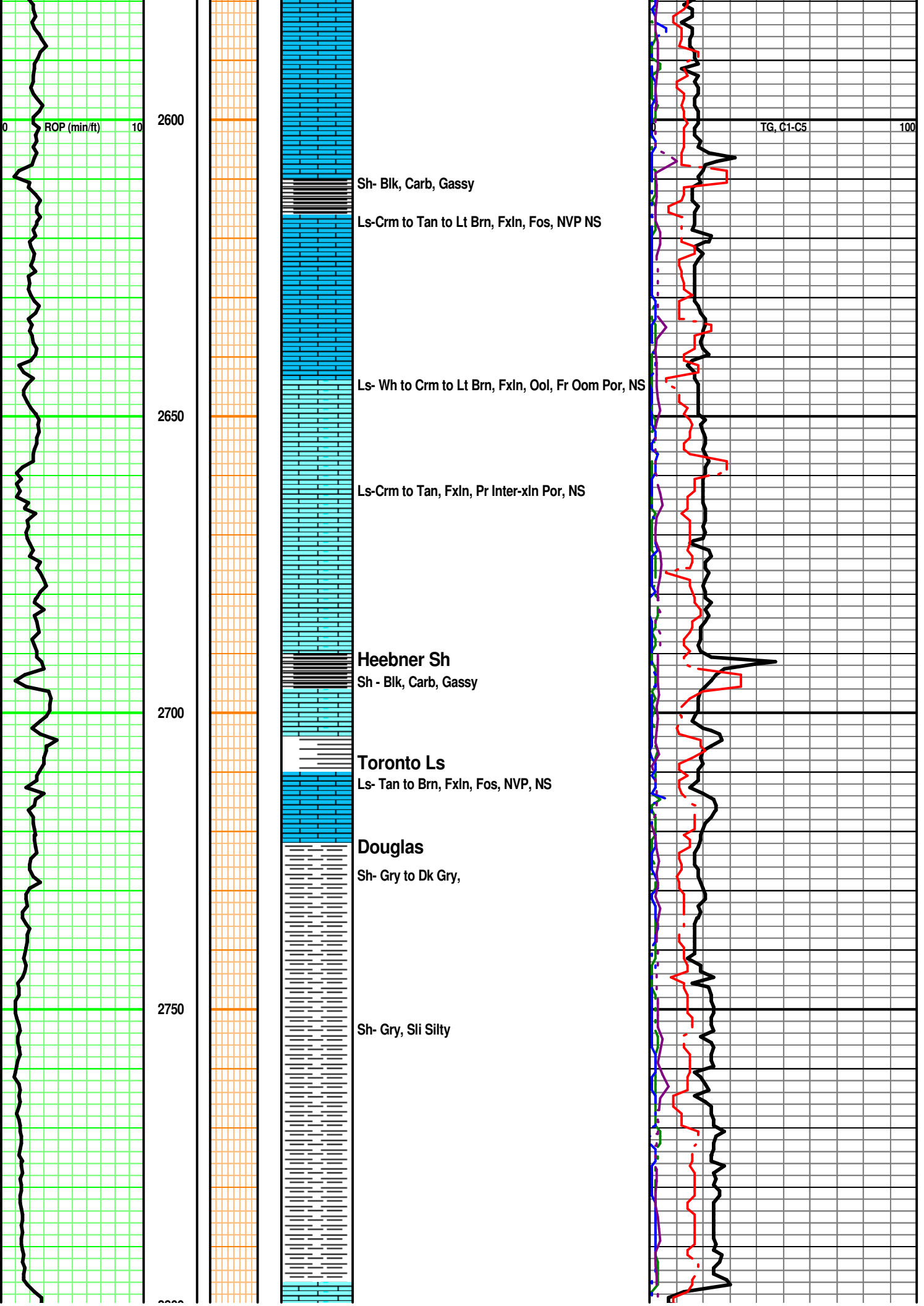
Sh- Gry

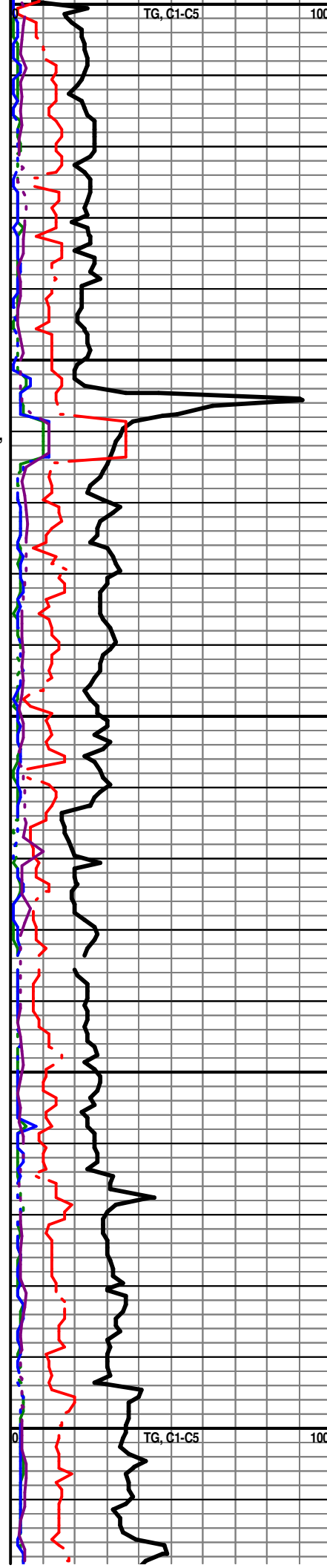
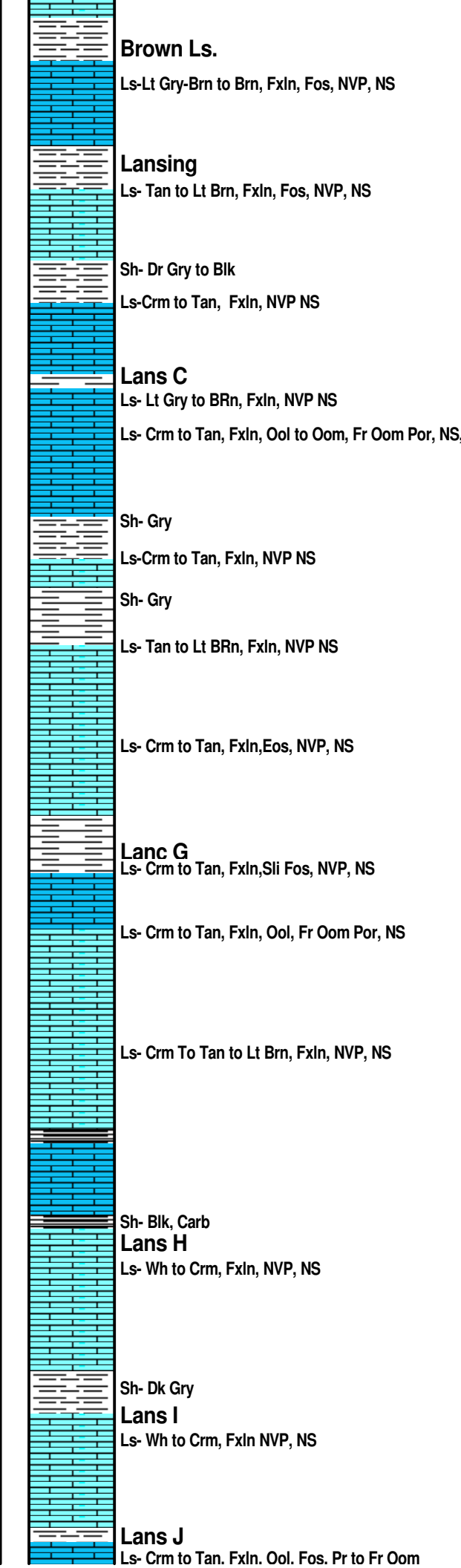
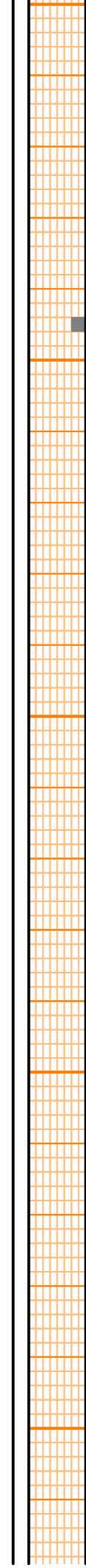
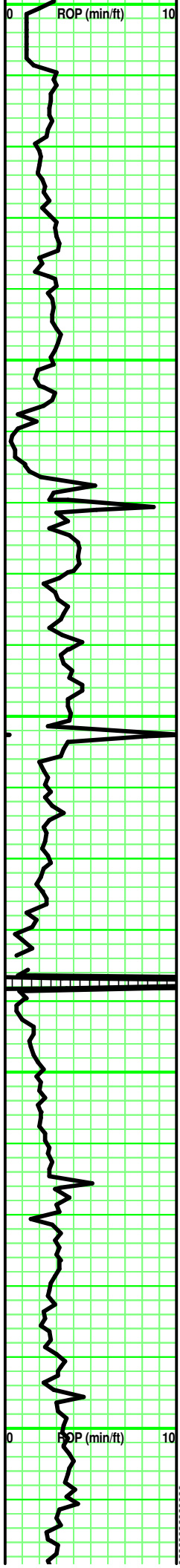
Ls-Crm to Tan Fxln, NVP NS

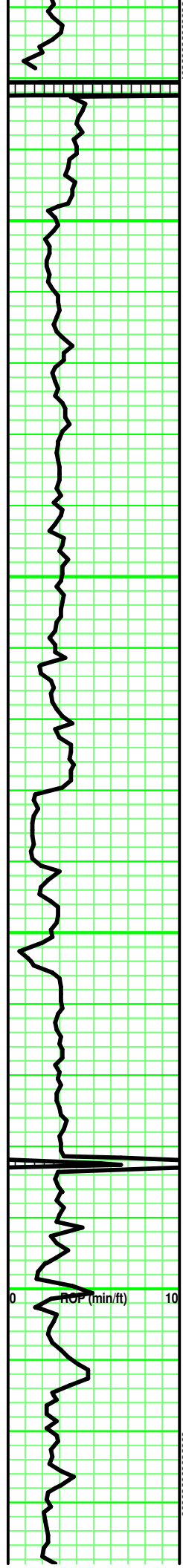
Sh- Gry

Ls- Tan to Lt Brn, Fxln, NVP, NS

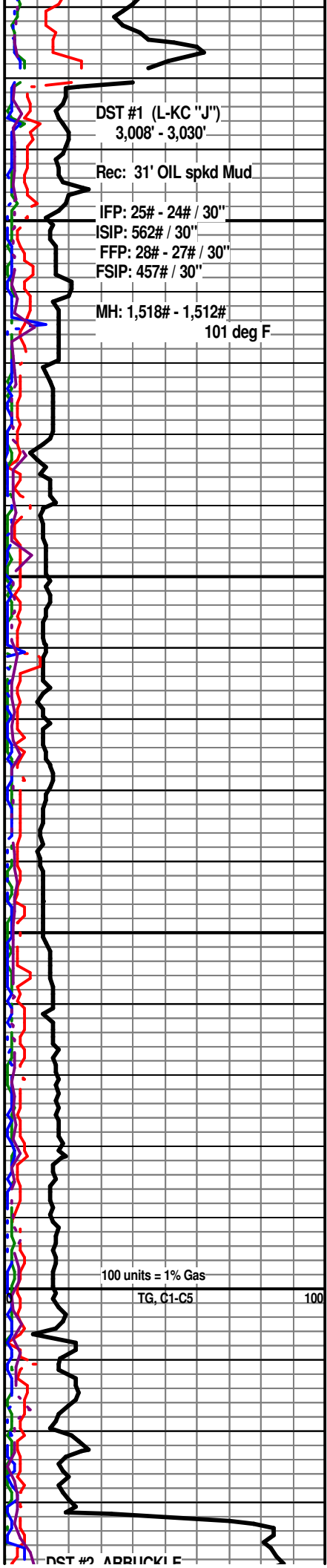
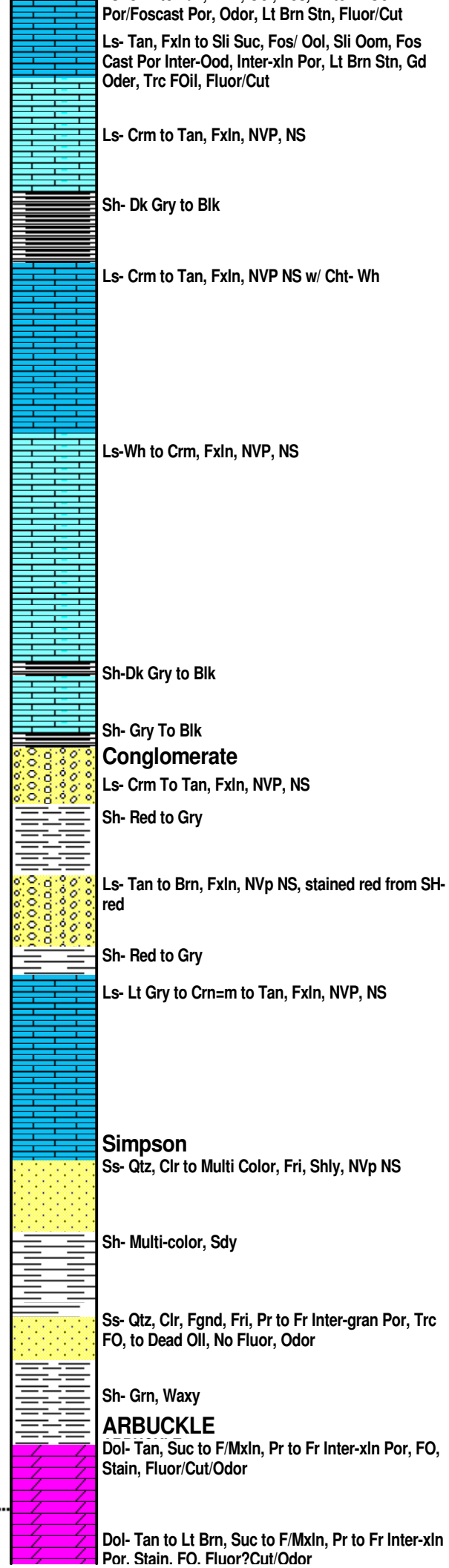


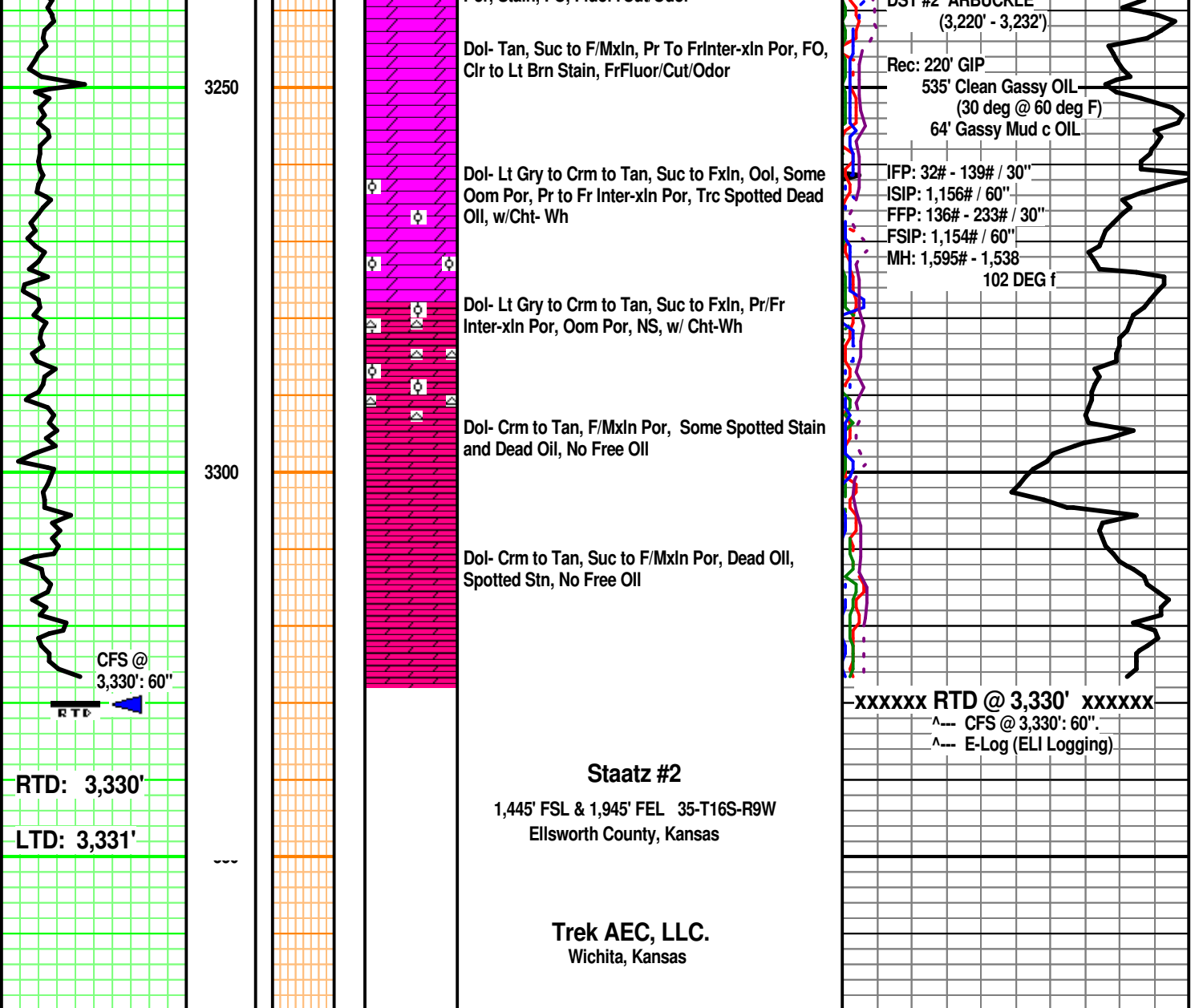






3050
3100
3150
3200
DST #2





Dol- Tan, Suc to F/MxlIn, Pr To FrInter-xln Por, FO, Clr to Lt Brn Stain, FrFluor/Cut/Odor

Dol- Lt Gry to Crm to Tan, Suc to Fxln, Ool, Some Oom Por, Pr to Fr Inter-xln Por, Trc Spotted Dead Oil, w/Cht- Wh

Dol- Lt Gry to Crm to Tan, Suc to Fxln, Pr/Fr Inter-xln Por, Oom Por, NS, w/ Cht-Wh

Dol- Crm to Tan, F/MxlIn Por, Some Spotted Stain and Dead Oil, No Free Oil

Dol- Crm to Tan, Suc to F/MxlIn Por, Dead Oil, Spotted Stn, No Free Oil

DST #2 ARBUCKLE (3,220' - 3,232')

Rec: 220' GIP
535' Clean Gassy OIL (30 deg @ 60 deg F)
64' Gassy Mud c OIL

IFP: 32# - 139# / 30"
ISIP: 1,156# / 60"
FFP: 136# - 233# / 30"
FSIP: 1,154# / 60"
MH: 1,595# - 1,538
102 DEG f

xxxxxxx RTD @ 3,330' xxxxxxx
^--- CFS @ 3,330': 60".
^--- E-Log (ELI Logging)

3250

3300

CFS @ 3,330': 60"



RTD: 3,330'

LTD: 3,331'

Staatz #2

1,445' FSL & 1,945' FEL 35-T16S-R9W
Ellsworth County, Kansas

Trek AEC, LLC.
Wichita, Kansas