



QUAD COMBO LOG

Company TREK AEC, LLC.
 Well STAATZ #2
 Field GREEN GARDEN
 County ELLSWORTH State KANSAS

Location: API #: 15-053-21375-0000
 1445' FSL & 1945' FEL
 SW - SE - NW - SE
 SEC 35 TWP 16S RGE 9W
 Permanent Datum GROUND LEVEL Elevation 1739
 Log Measured From KELLY BUSHING 8' A.G.L.
 Drilling Measured From KELLY BUSHING
 Other Services
 CDL/CNL/DIL
 MEL/SONIC
 Elevation
 K.B. 1747
 D.F. 1745
 G.L. 1739

Date	4/27/21
Run Number	ONE
Depth Driller	3330
Depth Logger	3331
Bottom Logged Interval	3307
Top Log Interval	2200
Casing Driller	8 5/8"@389'
Casing Logger	389
Bit Size	7 7/8"
Type Fluid in Hole	CHEMICAL MUD
Density / Viscosity	9.4/53
pH / Fluid Loss	9.5/7.2
Source of Sample	FLOWLINE
Rm @ Meas. Temp	.800@90F
Rmf @ Meas. Temp	.600@90F
Rmc @ Meas. Temp	.960@90F
Source of Rmf / Rmc	MEASUREMENT
Rm @ BHT	.656@110F
Time Circulation Stopped	2 HOURS
Time Logger on Bottom	5.45 P.M.
Maximum Recorded Temperature	110F
Equipment Number	922339
Location	HAYS, KANSAS
Recorded By	JEFF LUEBBERS
Witnessed By	DOUG DAVIS

<<< Fold Here >>>

All interpretations are opinions based on inferences from electrical or other measurements and we cannot and do not guarantee the accuracy or correctness of any interpretation, and we shall not, except in the case of gross or willful negligence on our part, be liable or responsible for any loss, costs, damages, or expenses incurred or sustained by anyone resulting from any interpretation made by any of our officers, agents or employees. These interpretations are also subject to our general terms and conditions set out in our current Price Schedule.

15-053-21375-0000 Comments

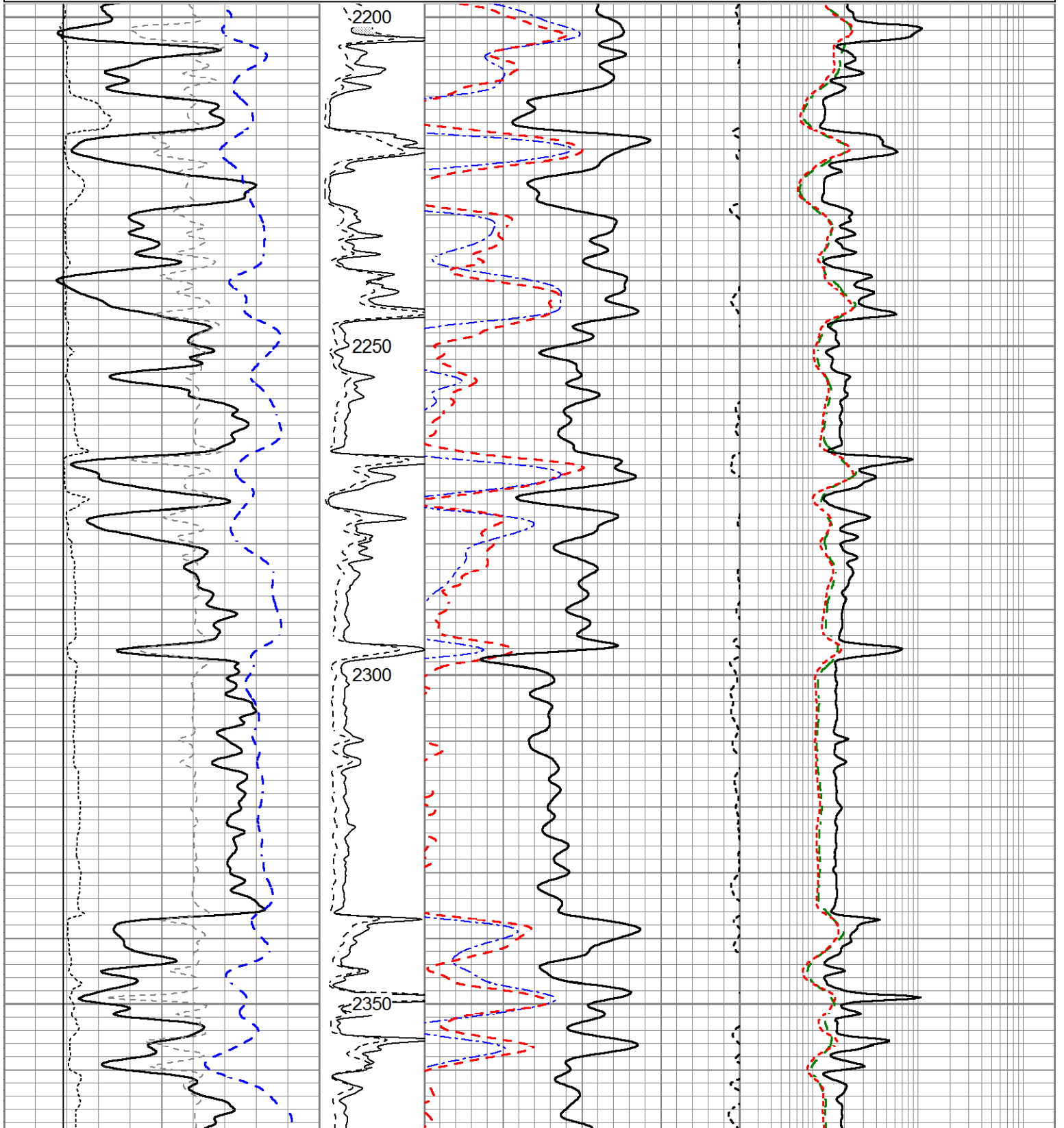
THANK YOU FOR USING ELI WIRELINE HAYS, KANSAS (785) 628-6395
 DIRECTIONS
 HOLYROOD, KS. (HWY 156 & AVE. T) 8E. ON "AVE. T" TO "12TH RD.", 1N. TO TANK BATTERY, W. & N. INTO

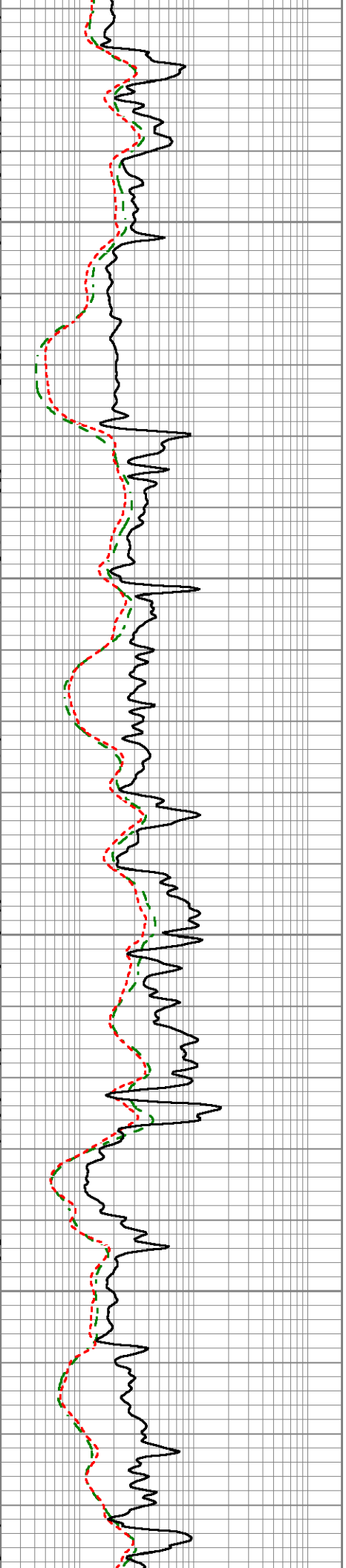
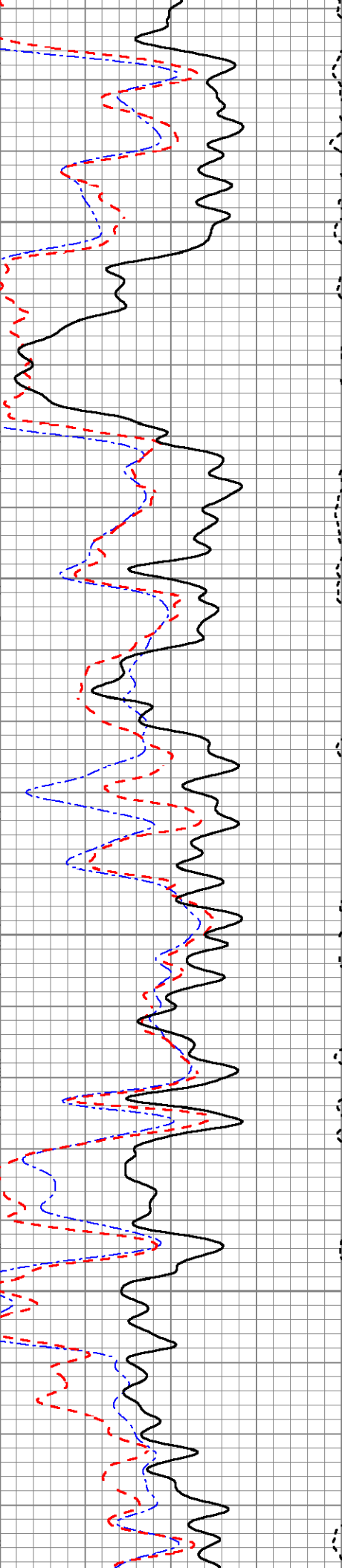
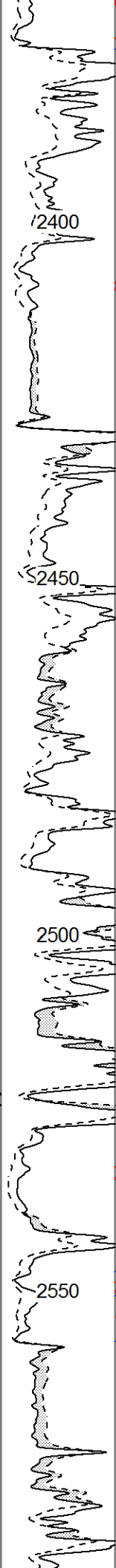
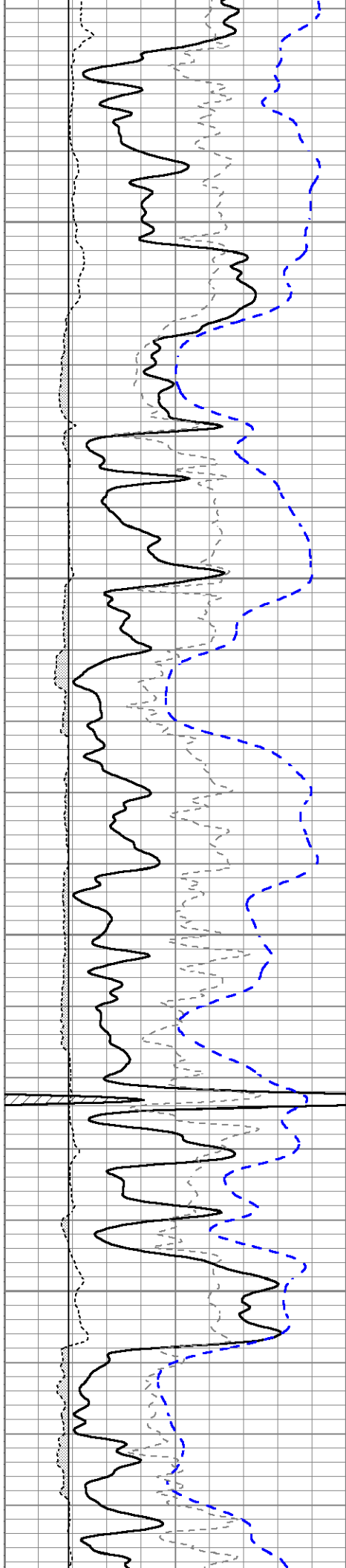


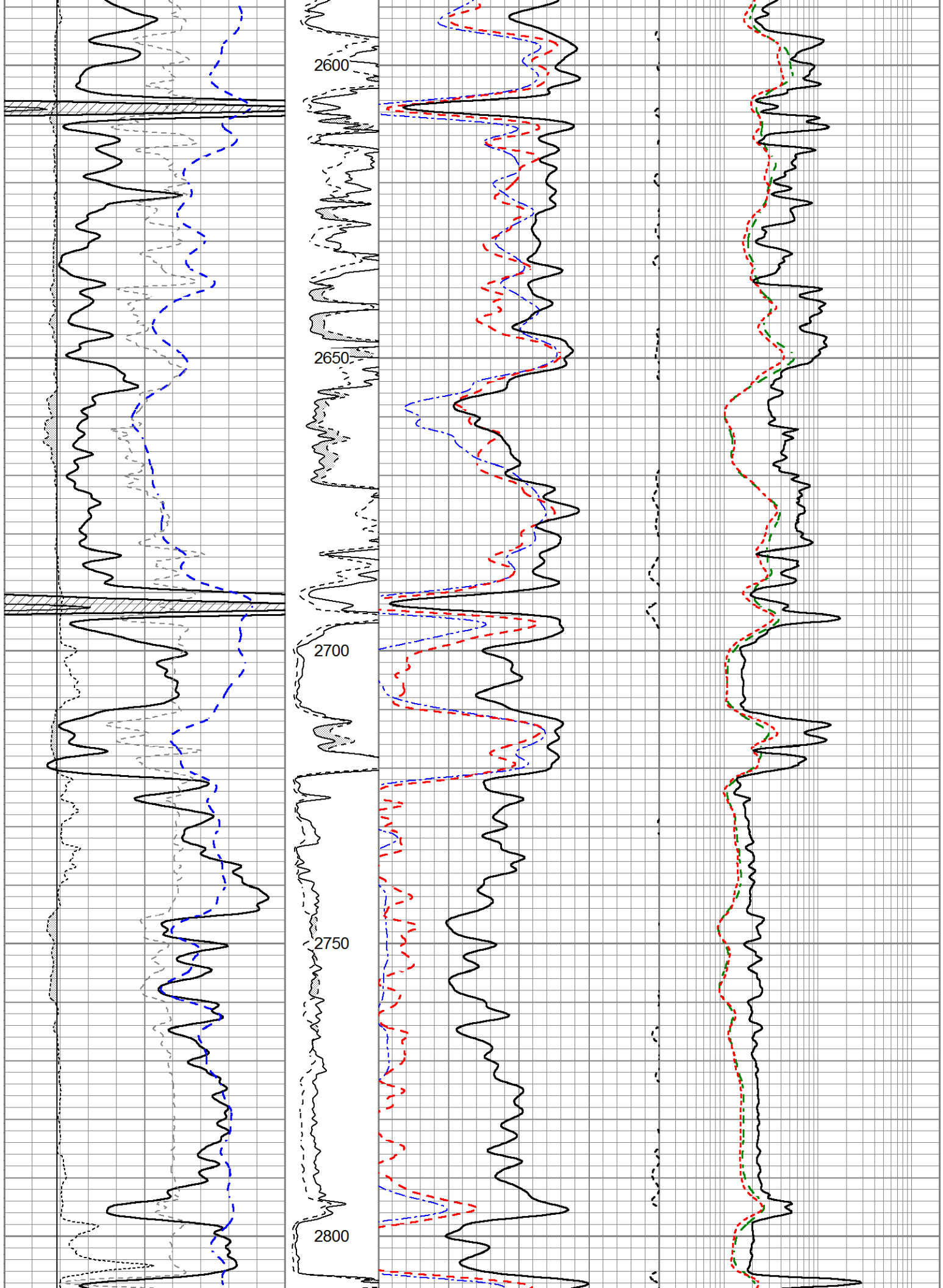
MAIN SECTION

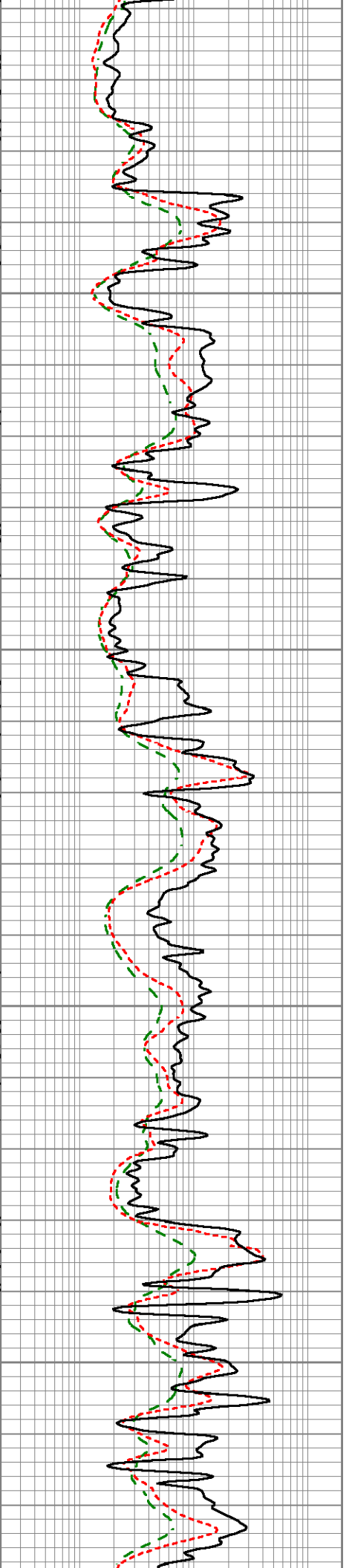
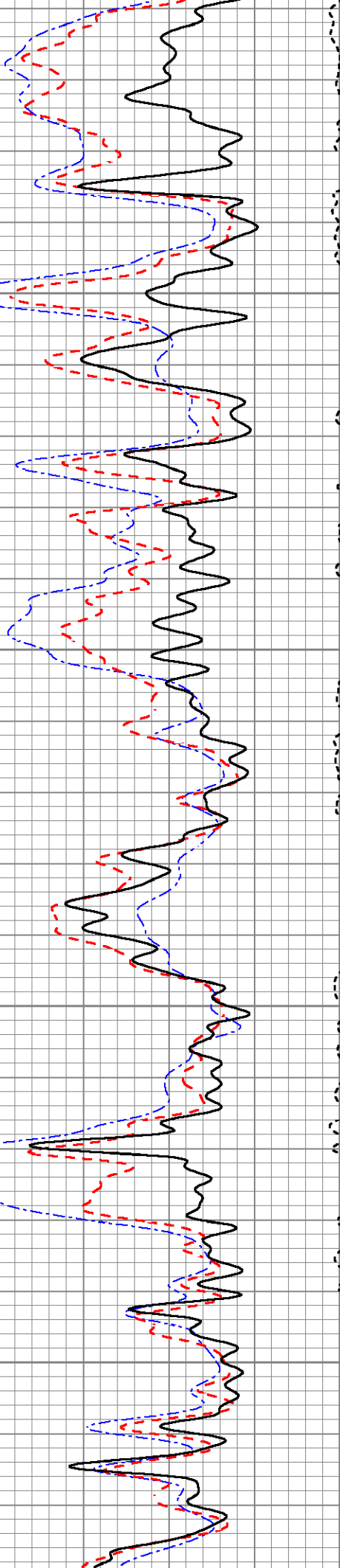
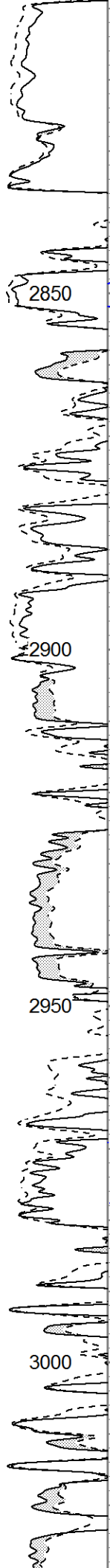
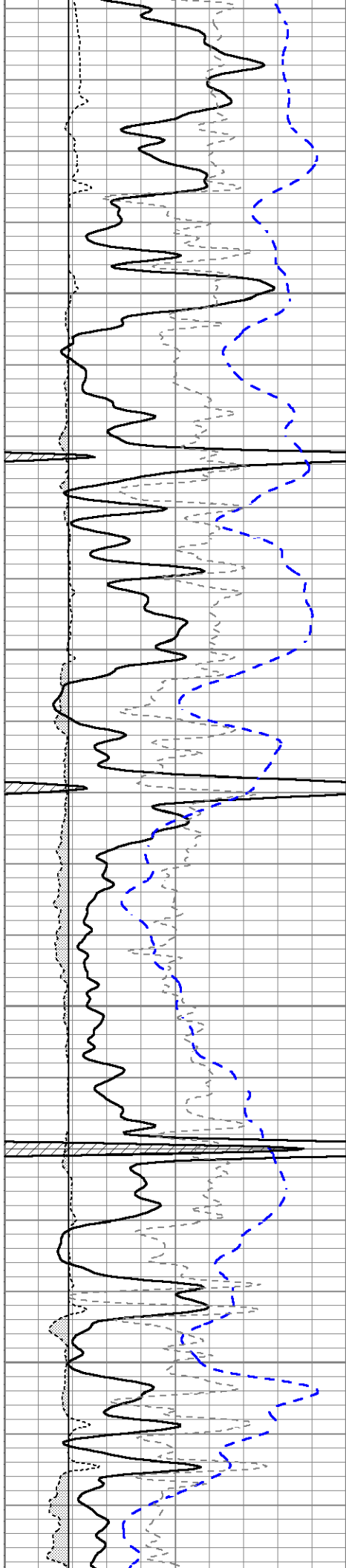
Database File 5268ddn.db
 Dataset Pathname pass3.3L
 Presentation Format _ritchie
 Dataset Creation Tue Apr 27 21:05:52 2021
 Charted by Depth in Feet scaled 1:240

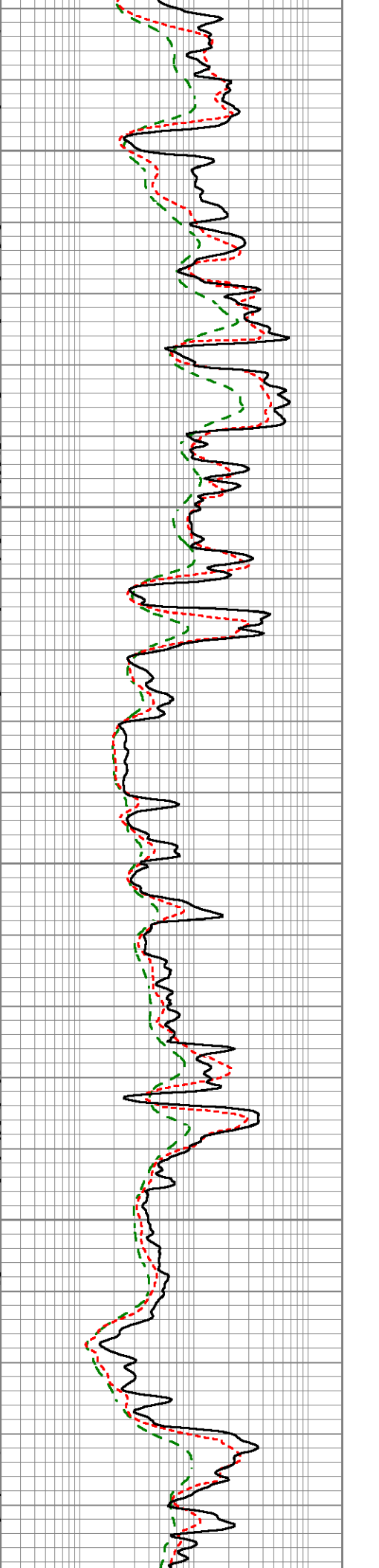
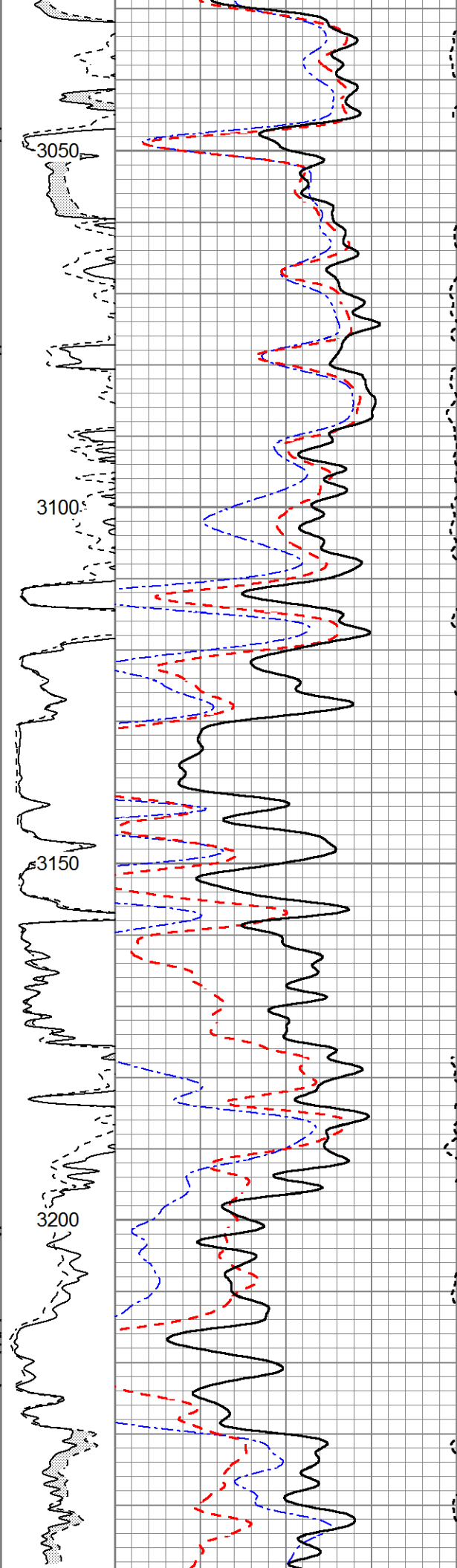
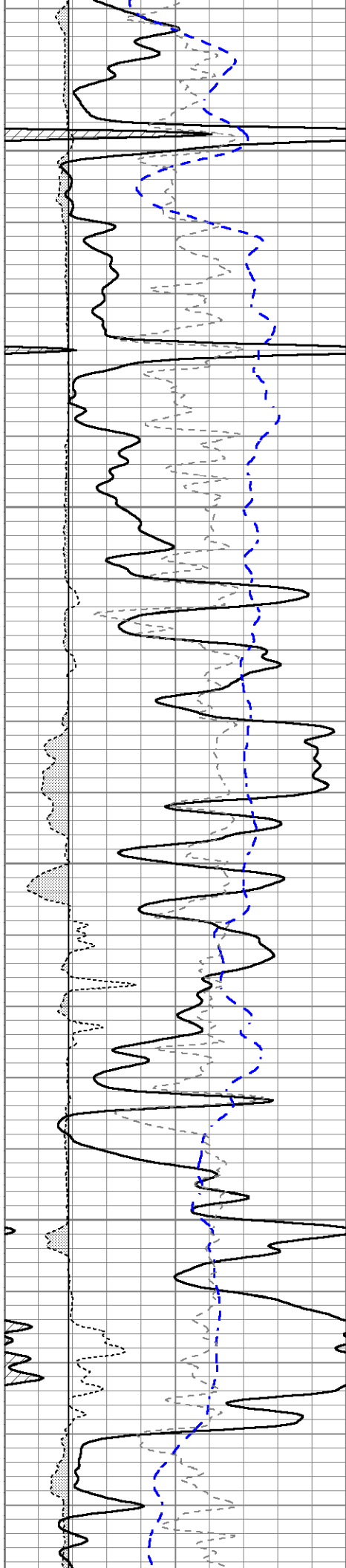
0	Gamma Ray (GAPI)	150	MEL15	30	Sonic Porosity (pu)	-10	0.2	Deep Resistivity (Ohm-m)	2000
-100	SP (mV)	100	(Ohm-m)	30	CN Porosity (pu)	-10		Medium Resistivity	
-200	RxoRt	100	0 20	30	Density Porosity (pu)	-10	0.2	(Ohm-m)	2000
6	DCAL (in)	16	MEL20		CORRECTION			Shallow Resistivity	
			(Ohm-m)		-0.25 (g/cc) 0.25		0.2	(Ohm-m)	2000
			0 20						

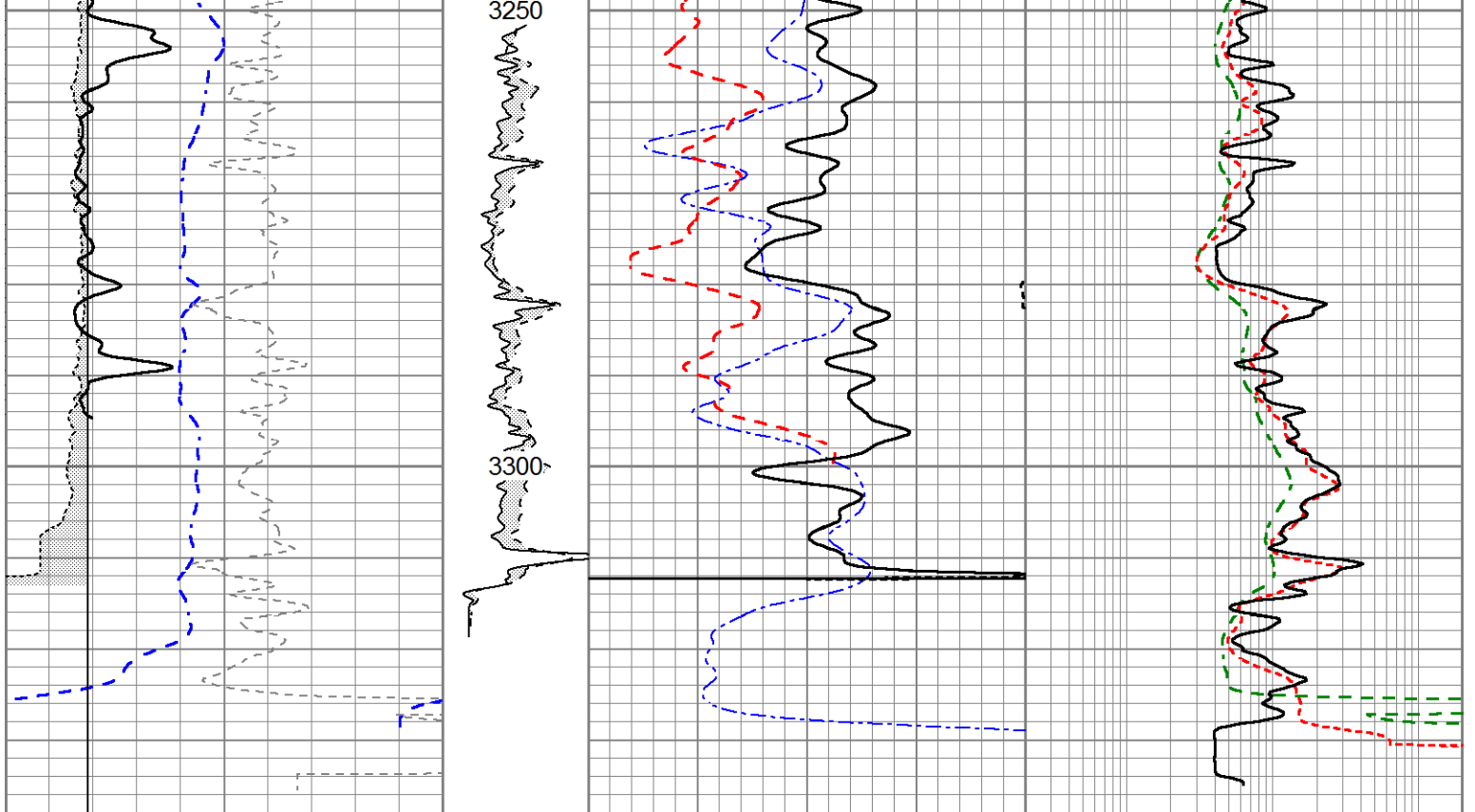












0	Gamma Ray (GAPI)	150	MEL15	30	Sonic Porosity (pu)	-10	0.2	Deep Resistivity (Ohm-m)	2000
-100	SP (mV)	100	(Ohm-m)	30	CN Porosity (pu)	-10		Medium Resistivity	
-200	RxoRt	100	0 20	30	Density Porosity (pu)	-10	0.2	(Ohm-m)	2000
6	DCAL (in)	16	MEL20		CORRECTION			Shallow Resistivity	
			(Ohm-m)		-0.25 (g/cc)	0.25	0.2	(Ohm-m)	2000
			0 20						