



MIDWEST WIRELINE

DUAL COMP POROSITY LOG

Company RAMA Operating Co., Inc.
 Well Ruthie 'T' #2-26
 Field Leiss Southeast
 County Stafford
 State Kansas

Company RAMA Operating Co., Inc.
 Well Ruthie 'T' #2-26
 Field Leiss Southeast
 County Stafford State Kansas

Location: API #: 15-185-24080-00-00
 SW - SE - NE - NE
 1267' FNL& 461' FEL
 SEC 26 TWP 25S RGE 13W
 Permanent Datum Ground Level Elevation 1915'
 Log Measured From Kelly Bushing
 Drilling Measured From Kelly Bushing
 Other Services
 DIL/MEL
 K.B. 1926'
 D.F. N/A
 G.L. 1915'

Date	5/24/2021						
Run Number	One						
Type Log	CNL/CDL						
Depth Driller	4290'						
Depth Logger	4289'						
Bottom Logged Interval	4260'						
Top Logged Interval	3300'						
Type Fluid In Hole	Chemical						
Salinity, PPM CL	6000						
Density	9.5						
Level	Full						
Max. Rec. Temp. F	119						
Operating Rig Time	2 Hours						
Equipment -- Location	P-24 HAYS						
Recorded By	D.Schmidt						
Witnessed By	Josh Austin						
Borehole Record							
Run No.	Bit	From	To	Size	Wgt.	From	To
One	12.25"	0'	328'	8.625"	23#	0'	328'
Two	7.875"	328'					
Casing Record							

<<< Fold Here >>>

All interpretations are opinions based on inferences from electrical or other measurements and Midwest Wireline Services, LLC cannot and does not guarantee the accuracy or correctness of any interpretation, and Midwest Wireline Services, LLC will not be liable or responsible for any loss, costs, damages, or expenses incurred or sustained by anyone resulting from any interpretation made by any of our officers, agents or employees.

Comments

N/A DENOTES NOT AVAILABLE OR NON-APPLICABLE.

St. John,
 South to Hwy 50, 8 South, 2 East, 3/4 North,
 West into

Log Measured From: Kelly Bushing 11 Ft. Above Permanent Datum

THANK YOU FOR USING MIDWEST WIRELINE LLC
 785-625-3858

Your Midwest Wireline Crew		This Log Record Was Witnessed By	
Engineer: D.Schmidt	Operator:	Primary Witness: Josh Austin	Secondary Witness:
Operator:	Operator:	Secondary Witness:	Secondary Witness:
Operator:		Secondary Witness:	

Sensor	Offset (ft)	Schematic	Description	Length (ft)	O.D. (in)	Weight (lb)
GR	44.50		GR-M&W (233-M&W)	3.00	3.50	50.00
CNLSC CNSSC	41.40 40.65		CNT-M&W (207-MW)	5.50	3.50	100.00
LSD DCAL SSD	32.35 32.33 31.85		CDL-M&W (817-947)	8.50	4.00	250.00
MCAL MI MN	20.87 20.87 20.87		ML-PSI UDM ML (UDM-01) Stackable Microlog Tools	11.50	4.00	215.00
RLL3F RLL3	15.80 15.80		DIL-PSI HIGH TEMP (952-828)	18.50	3.50	220.00
CILD	8.00					
CILM	4.70					
SP	0.20					

Dataset: rama_ruthie t 2-26.db: field/well/stkml/pass4.1
 Total length: 47.00 ft
 Total weight: 835.00 lb
 O.D.: 4.00 in

Log Variables

DatabaseC:\ProgramData\Warrior\Data\rama_ruthie t 2-26.db
 Dataset field/well/stkml/pass4.1/_vars_

Top - Bottom

A	BOREID in	BOTTEMP degF	CASEOD in	CASETHCK in	FLUIDDEN g/cc	M	MATRXDEN g/cc
1	7.875	119	5.5	0	1	2	2.71
NPORSEL	PERFS	SNDERR mmho/m	SNDERRM mmho/m	SPSHIFT mV	SRFTEMP degF	SZCOR	TDEPTH ft
Limestone	No	0	0	310	60	Off	4289

Variable Description

A : Cement Factor (a)
 BOREID : Borehole I.D.
 BOTTEMP : Bottom Hole Temperature
 CASEOD : Casing O.D.
 CASETHCK : Casing Thickness
 FLUIDDEN : Fluid Density
 M : Cement Exp (m)
 MATRXDEN : Matrix Density

NPORSEL : Neutron Porosity Curve Select
 PERFS : Perforation Flag
 SNDERR : Deep Sonde Error Correction
 SNDERRM : Medium Sonde Error Correction
 SPSHIFT : S.P. Baseline Offset
 SRFTEMP : Surface Temperature
 SZCOR : CN Size Cor. ?
 TDEPTH : Total Depth



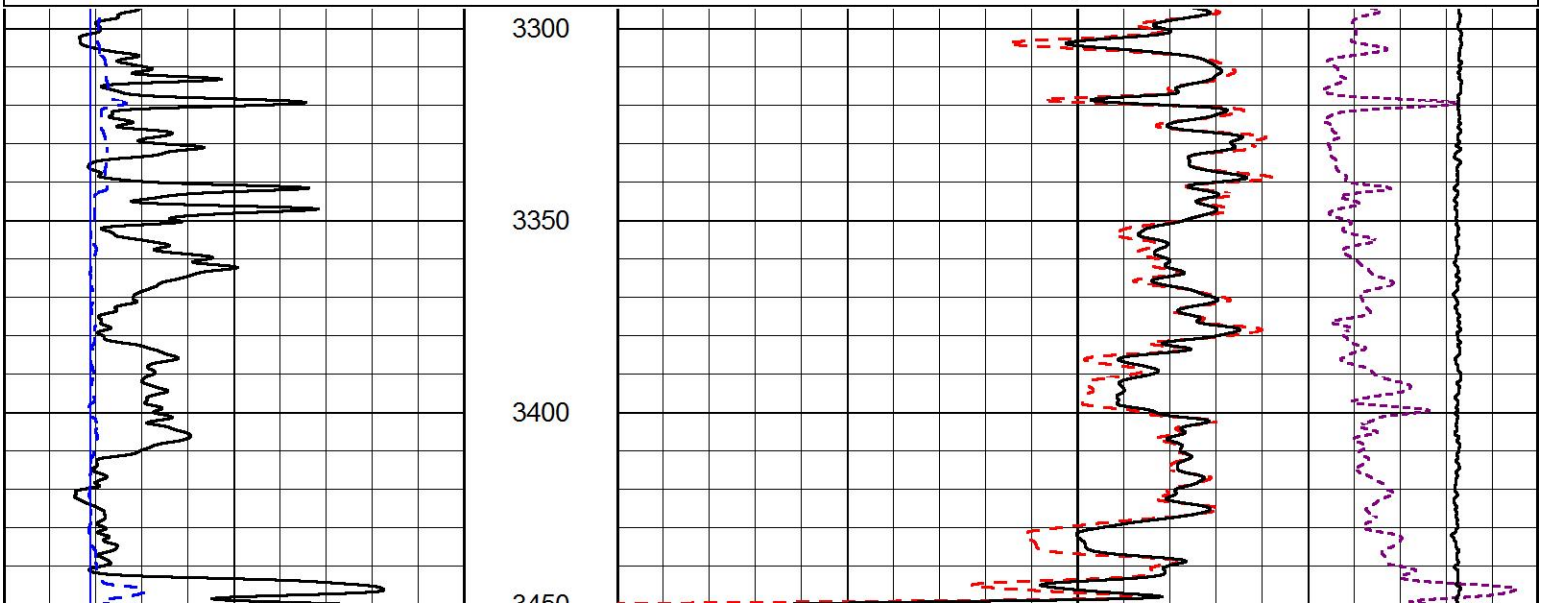
2" SCALE BULK DENSITY

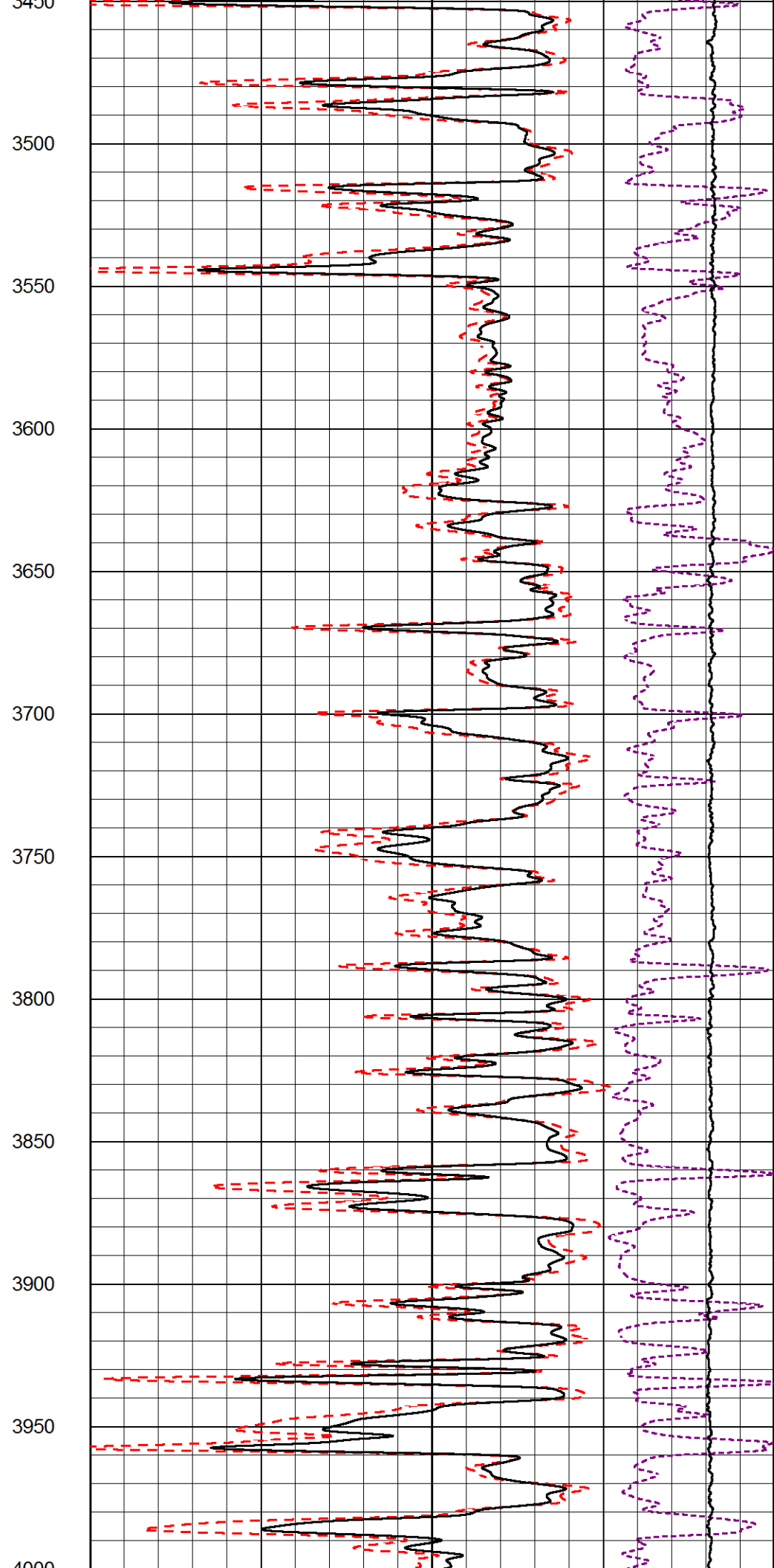
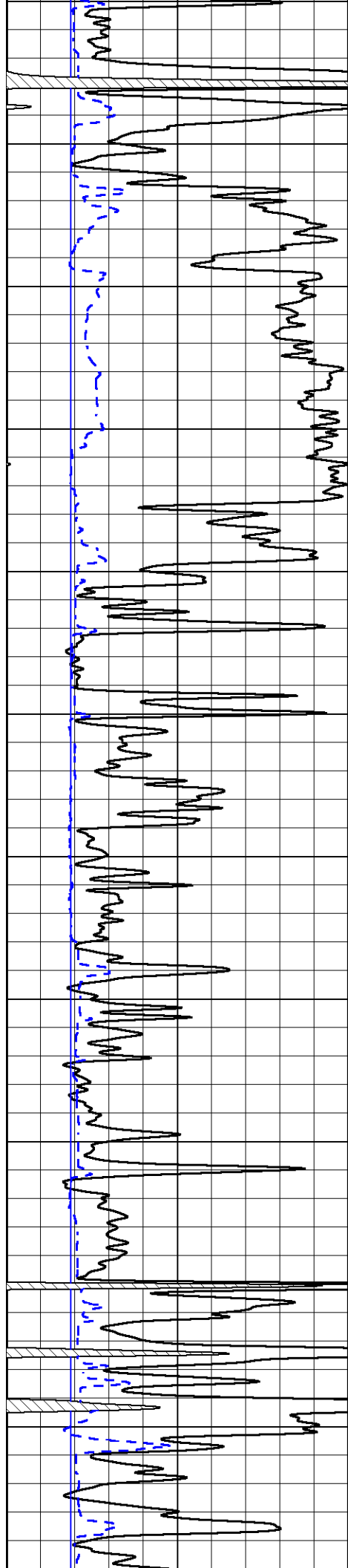
MAIN PASS

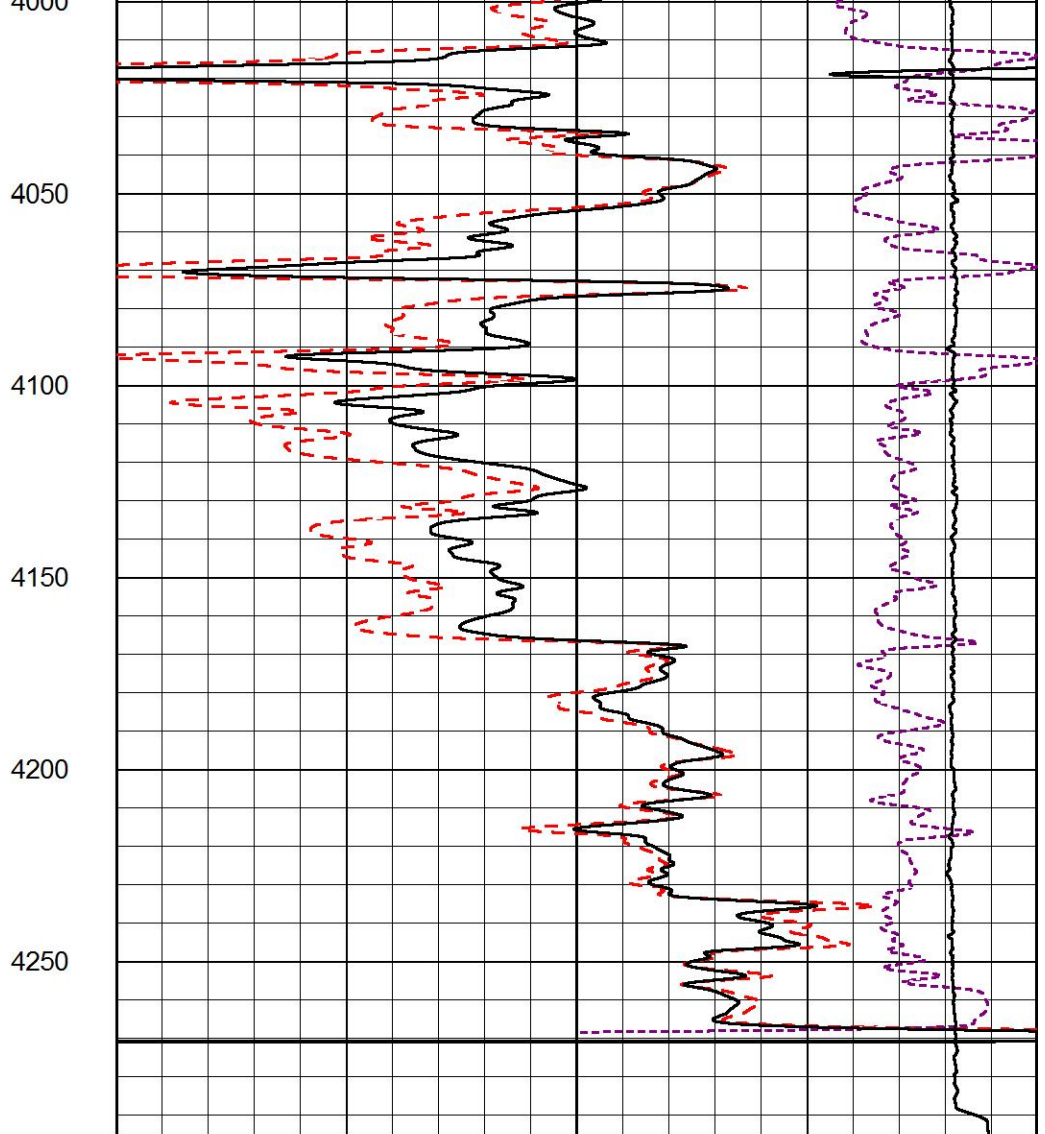
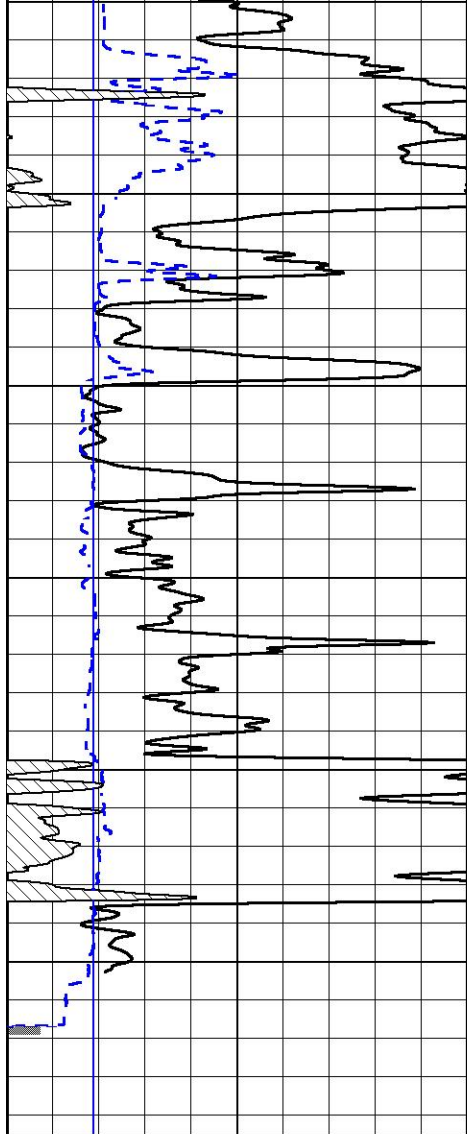
Database File rama_ruthie t 2-26.db
 Dataset Pathname stkml/pass5.1
 Presentation Format _cdl
 Dataset Creation Mon May 24 14:26:44 2021
 Charted by Depth in Feet scaled 1:600

0	GAMMA RAY (GAPI)	150
6	DCAL (in)	16

COMPENSATED DENSITY (2.65 MA)	
30	(pu) -10
2	BULK DENSITY (g/cc) 3
15000	LINE TENSION (lb) 0
-0.25	CORRECTION (g/cc) 0.25







0	GAMMA RAY (GAPI)	150
6	DCAL (in)	16

COMPENSATED DENSITY (2.65 MA)		
30	(pu)	-10
2	BULK DENSITY (g/cc)	3
15000	LINE TENSION (lb)	0
-0.25	CORRECTION (g/cc)	0.25



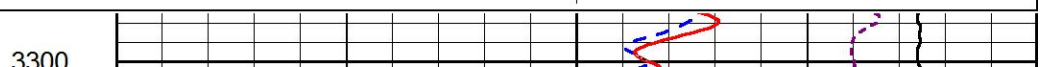
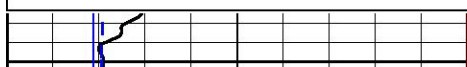
DETAIL SECTION

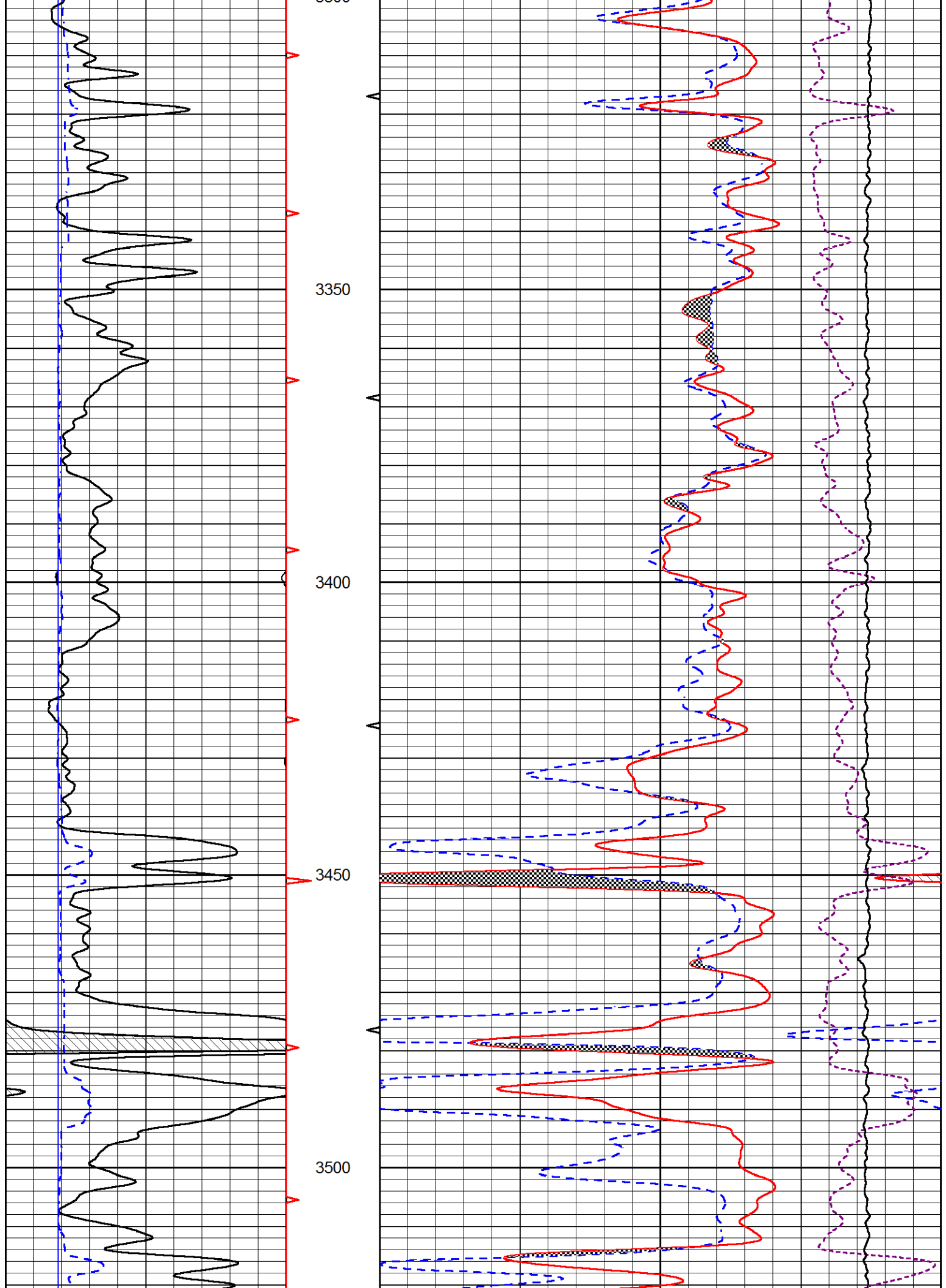
MAIN PASS

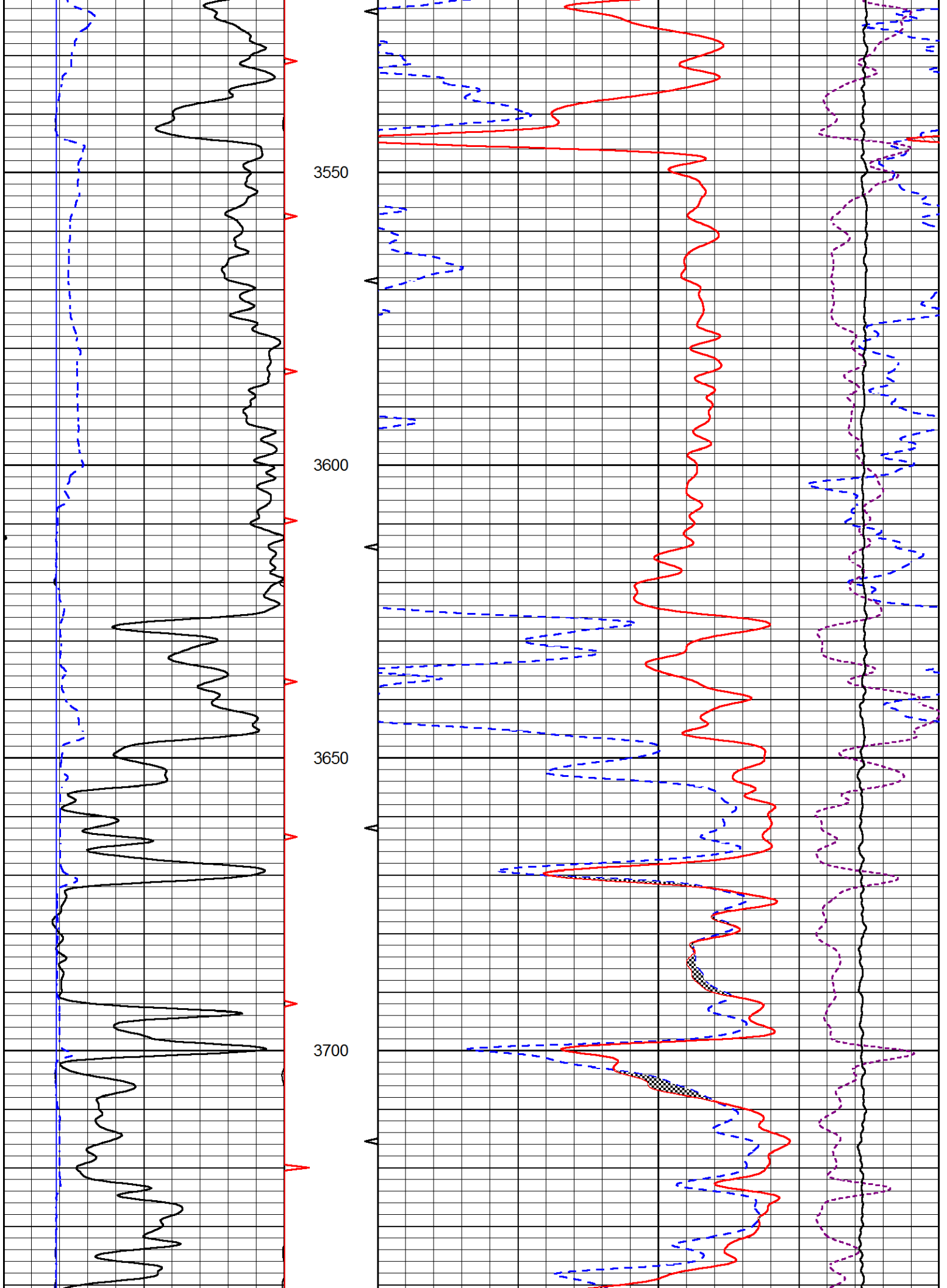
Database File rama_ruthie t 2-26.db
 Dataset Pathname stkml/pass4.1
 Presentation Format _CNDLS~1
 Dataset Creation Mon May 24 14:25:55 2021
 Charted by Depth in Feet scaled 1:240

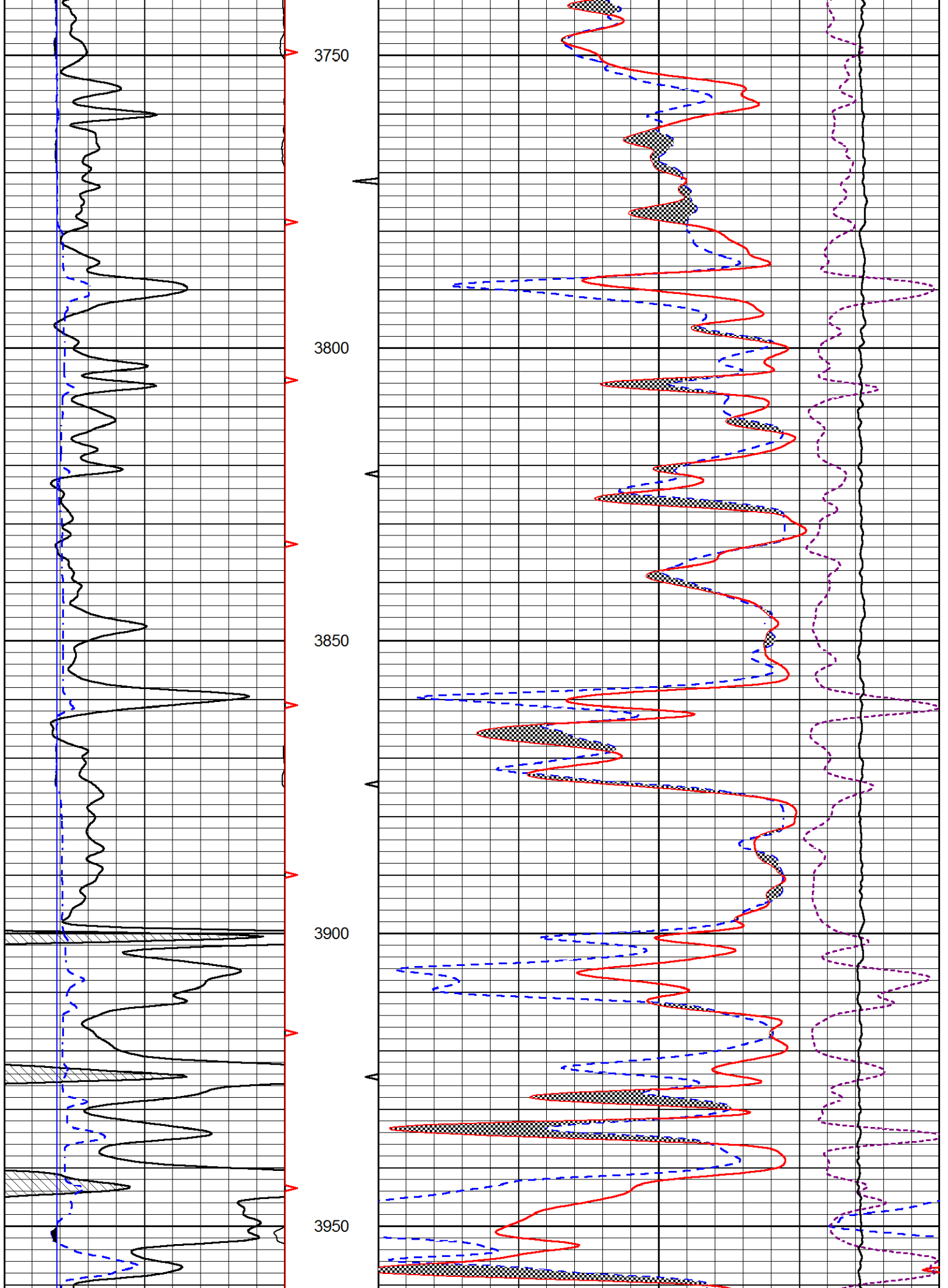
0	GAMMA RAY (GAPI)	150
6	DCAL (in)	16

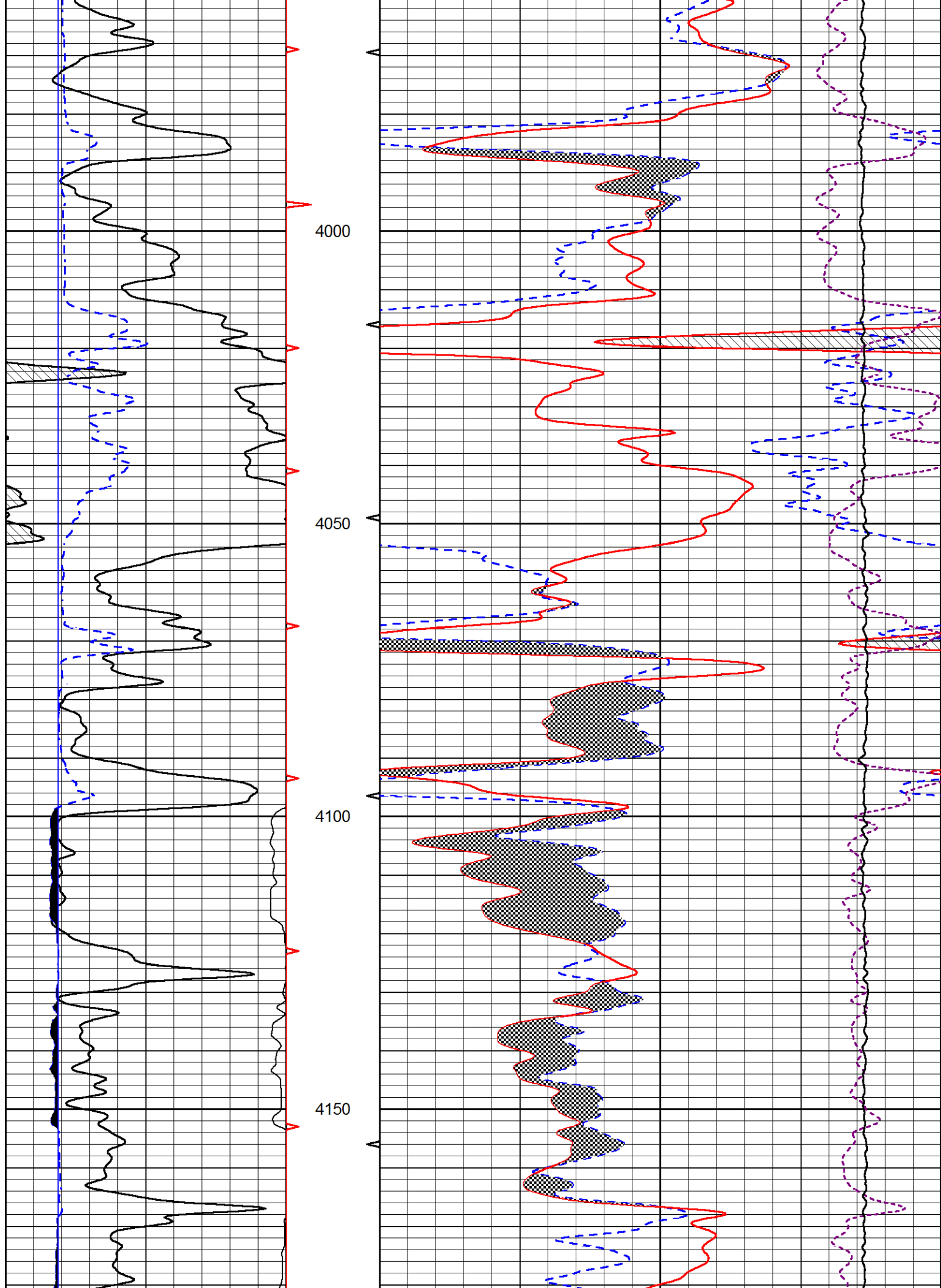
30	CNPOR (pu)	-10
30	DPOR (pu)	-10
10000	LINE TENSION (lb)	0
-0.25	CORRECTION (g/cc)	0.25

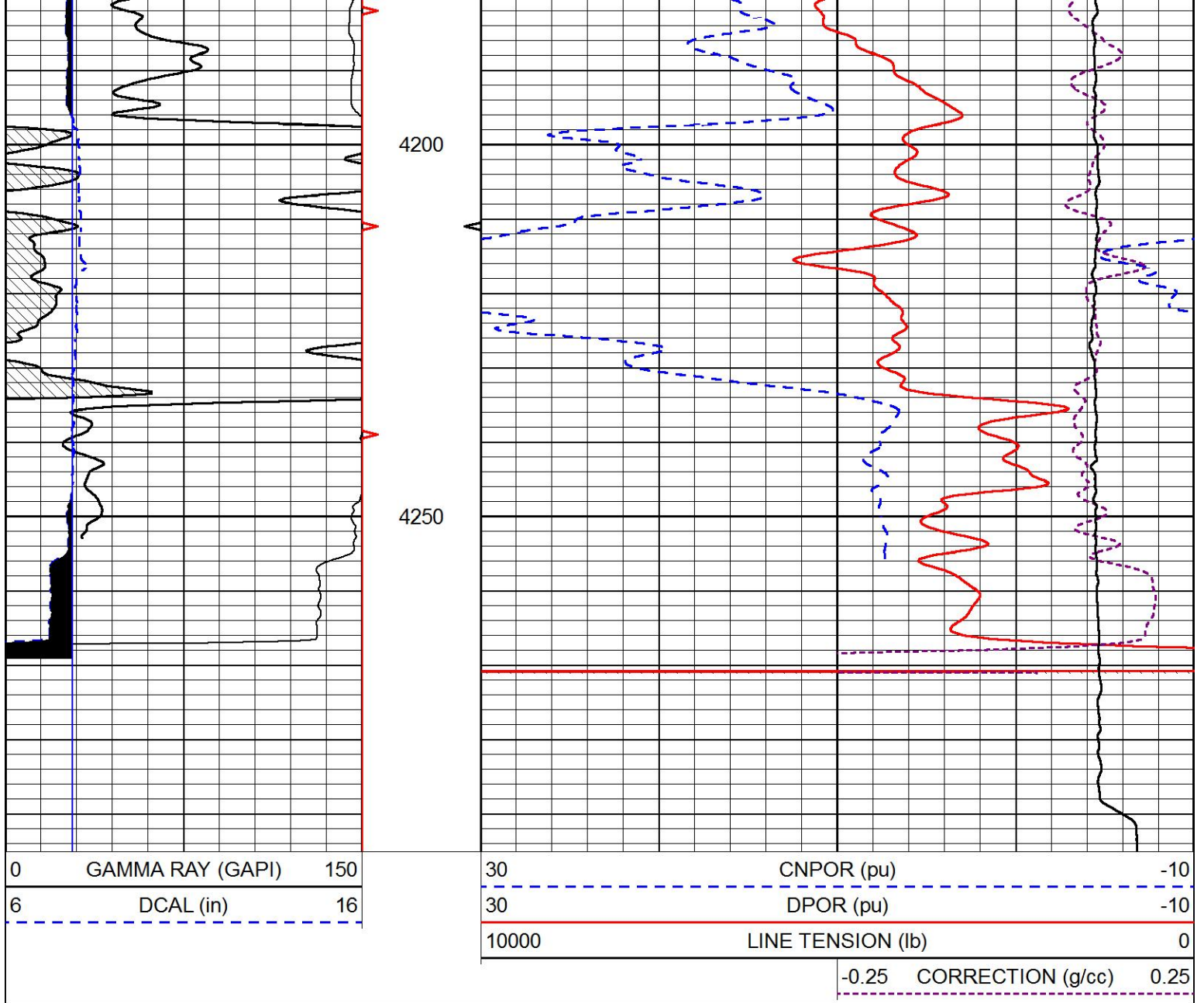












Company RAMA Operating Co., Inc.
 Well Ruthie 'T' #2-26
 Field Leiss Southeast
 County Stafford
 State Kansas