



MIDWEST WIRELINE

DUAL INDUCTION LOG

Company RAMA Operating Co., Inc.
 Well Ruthie 'T' #2-26
 Field Leiss Southeast
 County Stafford State Kansas

Company RAMA Operating Co., Inc.
 Well Ruthie 'T' #2-26
 Field Leiss Southeast
 County Stafford
 State Kansas

Location: API #: 15-185-24080-00-00
 SW - SE - NE - NE
 1267' FNL& 461' FEL
 SEC 26 TWP 25S RGE 13W
 Permanent Datum Ground Level Elevation 1915'
 Log Measured From Kelly Bushing
 Drilling Measured From Kelly Bushing
 Other Services
 CNL/CDL
 MEL
 Elevation
 K.B. 1926'
 D.F. N/A
 G.L. 1915'

Date	5/24/2021
Run Number	One
Depth Driller	4290'
Depth Logger	4289'
Bottom Logged Interval	4288'
Top Log Interval	300'
Casing Driller	8.625" @ 328'
Casing Logger	327'
Bit Size	7.875"
Type Fluid in Hole	Chemical
Salinity, ppm CL	6000
Density / Viscosity	9.5 54
pH / Fluid Loss	10.5 10.8
Source of Sample	FLOWLINE
Rm @ Meas. Temp	0.70 @ 60
Rmt @ Meas. Temp	0.60 @ 60
Rmc @ Meas. Temp	1.08 @ 60
Source of Rmf / Rmc	CHARTS
Rm @ BHT	0.40 @ 119
Operating Rig Time	2 Hours
Max Rec. Temp. F	119
Equipment Number	P-24
Location	HAYS
Recorded By	D.Schmidt
Witnessed By	Josh Austin

<<< Fold Here >>>

All interpretations are opinions based on inferences from electrical or other measurements and Midwest Wireline LLC cannot and does not guarantee the accuracy or correctness of any interpretation, and Midwest Wireline LLC will not be liable or responsible for any loss, costs, damages, or expenses incurred or sustained by anyone resulting from any interpretation made by any of our officers, agents or employees.

Comments

N/A DENOTES NOT AVAILABLE OR NON-APPLICABLE.

St. John,
 South to Hwy 50, 8 South, 2 East, 3/4 North,
 West into

Log Measured From: Kelly Bushing 11 Ft. Above Permanent Datum

THANK YOU FOR USING MIDWEST WIRELINE LLC
 785-625-3858

Your Midwest Wireline Crew		This Log Record Was Witnessed By	
Engineer: D.Schmidt	Operator:	Primary Witness: Josh Austin	Secondary Witness:
Operator:	Operator:	Secondary Witness:	Secondary Witness:
Operator:		Secondary Witness:	

Operator	Offset (ft)	Depth (ft)	Description	Length (ft)	C.D. (in)	Weight (lb)
----------	-------------	------------	-------------	-------------	-----------	-------------

Sensor	Offset (ft)	Schematic	Description	Length (ft)	O.D. (in)	Weight (lb)
GR	44.50		GR-M&W (233-M&W)	3.00	3.50	50.00
CNLSC CNSSC	41.40 40.65		CNT-M&W (207-MW)	5.50	3.50	100.00
LSD DCAL SSD	32.35 32.33 31.85		CDL-M&W (817-947)	8.50	4.00	250.00
MCAL MI MN	20.87 20.87 20.87		ML-PSI UDM ML (UDM-01) Stackable Microlog Tools	11.50	4.00	215.00
RLL3F RLL3	15.80 15.80					
CILD	8.00		DIL-PSI HIGH TEMP (952-828)	18.50	3.50	220.00
CILM	4.70					
SP	0.20					

Dataset: rama_ruthie t 2-26.db: field/well/stkml/pass4.1
 Total length: 47.00 ft
 Total weight: 835.00 lb
 O.D.: 4.00 in

Log Variables

DatabaseC:\ProgramData\Warrior\Data\rama_ruthie t 2-26.db
 Dataset field/well/stkml/pass4.1/_vars_

Top - Bottom

A	BOREID in	BOTTEMP degF	CASEOD in	CASETHCK in	FLUIDDEN g/cc	M	MATRXDEN g/cc
1	7.875	119	5.5	0	1	2	2.71
NPORSEL	PERFS	SNDERR mmho/m	SNDERRM mmho/m	SPSHIFT mV	SRFTEMP degF	SZCOR	TDEPTH ft
Limestone	No	0	0	310	60	Off	4289

Variable Description

A : Cement Factor (a)
 BOREID : Borehole I.D.
 BOTTEMP : Bottom Hole Temperature
 CASEOD : Casing O.D.
 CASETHCK : Casing Thickness
 FLUIDDEN : Fluid Density
 M : Cement Exp (m)
 MATRXDEN : Matrix Density

NPORSEL : Neutron Porosity Curve Select
 PERFS : Perforation Flag
 SNDERR : Deep Sonde Error Correction
 SNDERRM : Medium Sonde Error Correction
 SPSHIFT : S.P. Baseline Offset
 SRFTEMP : Surface Temperature
 SZCOR : CN Size Cor. ?
 TDEPTH : Total Depth

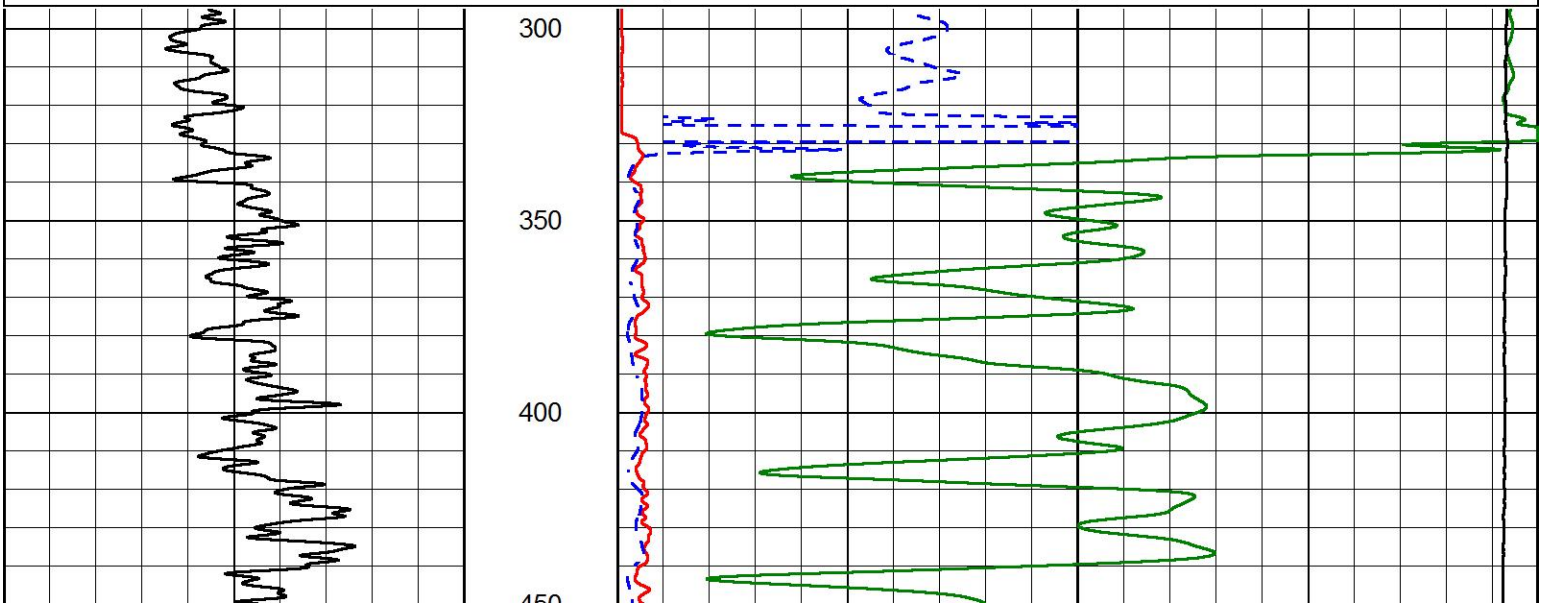


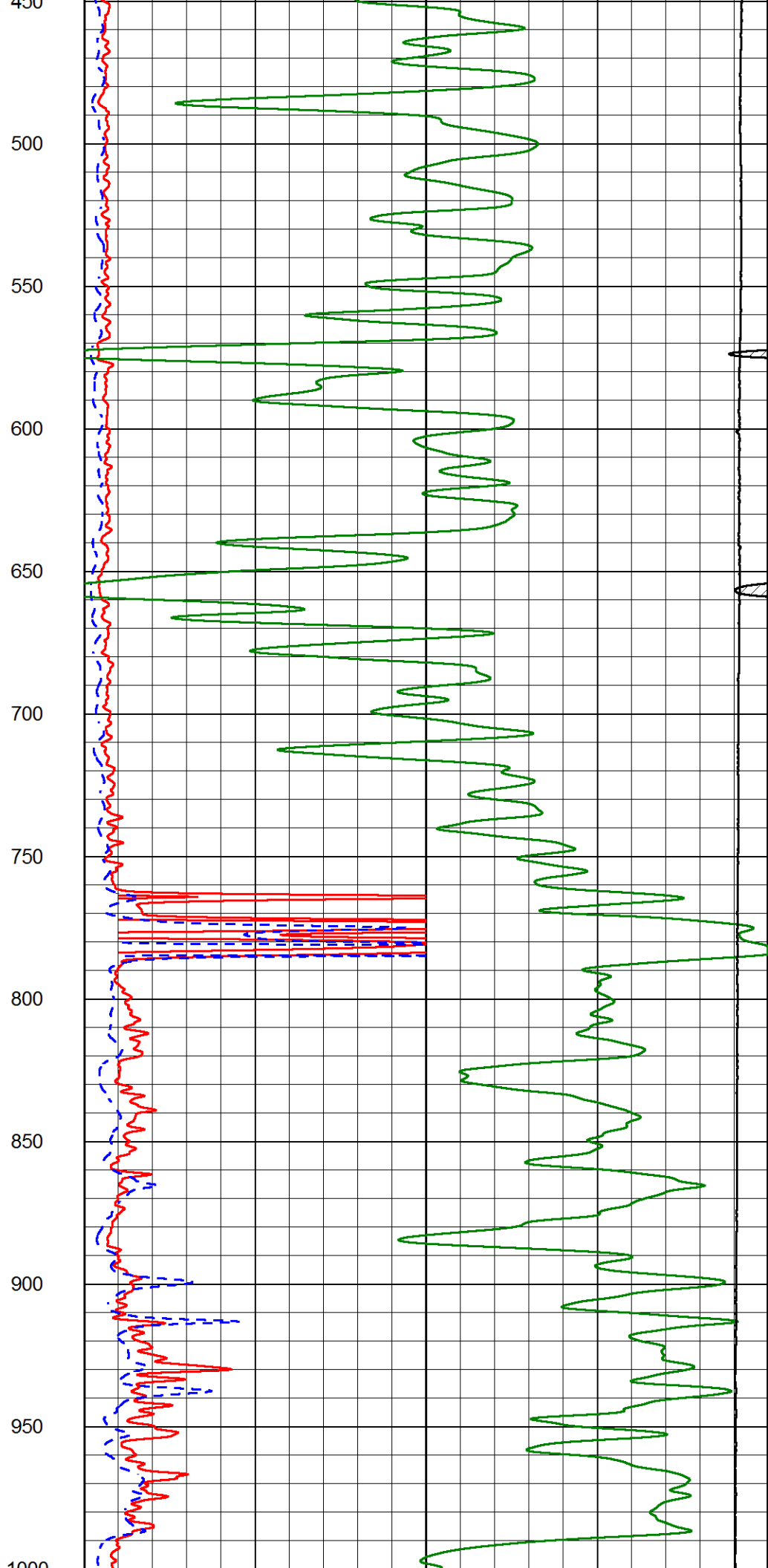
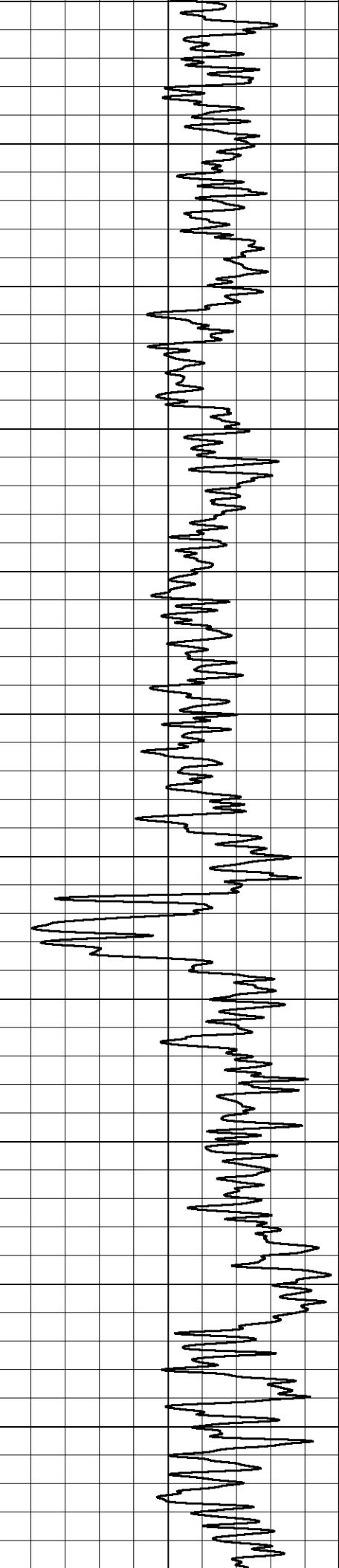
2" SCALE RESISTIVITY

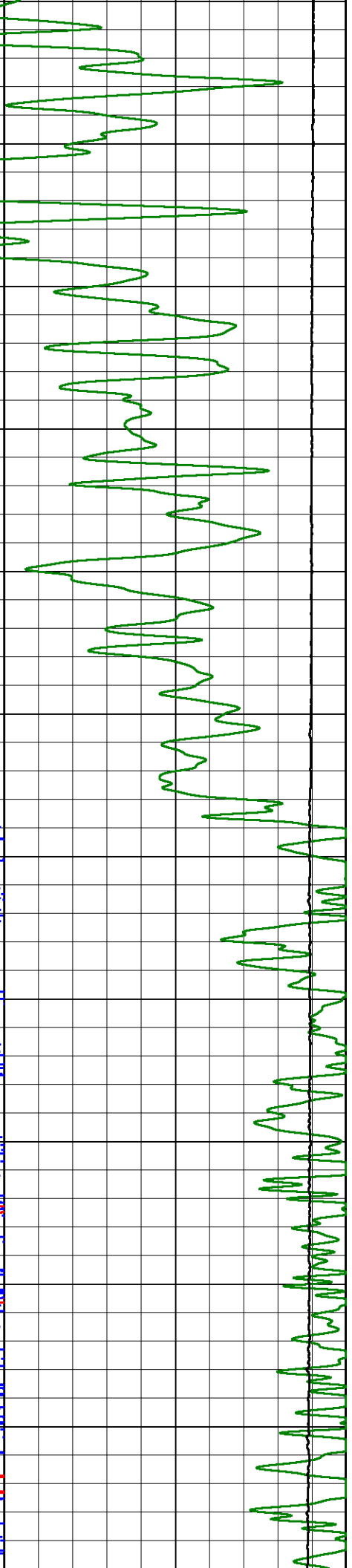
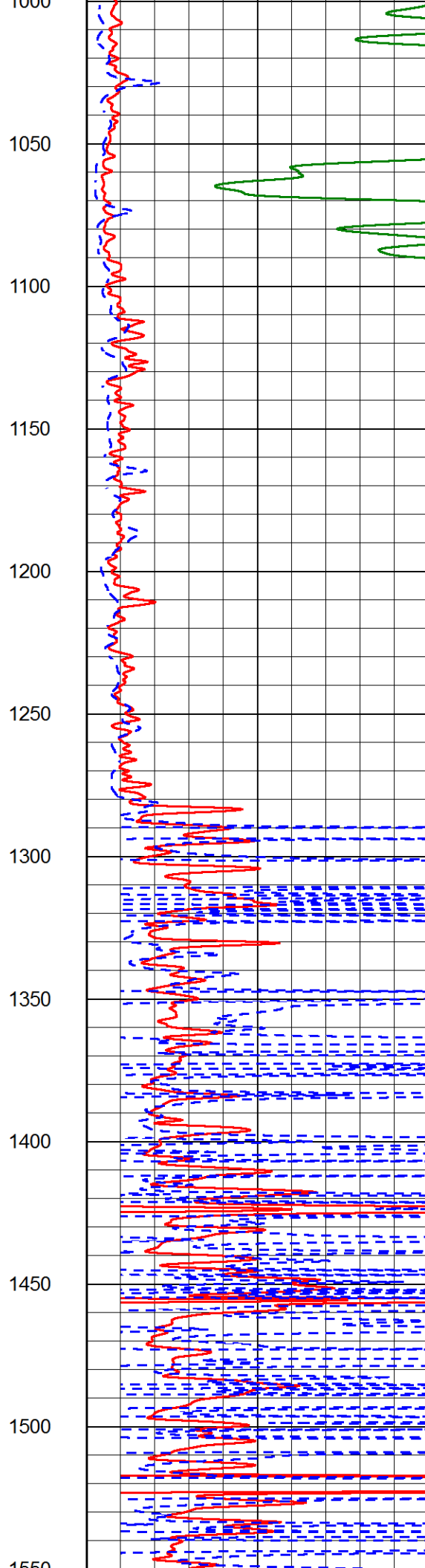
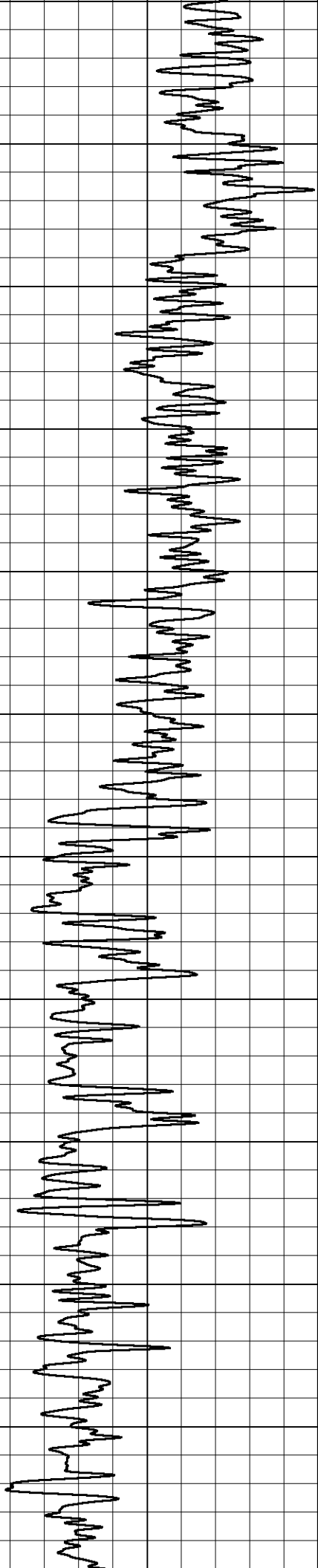
MAIN PASS

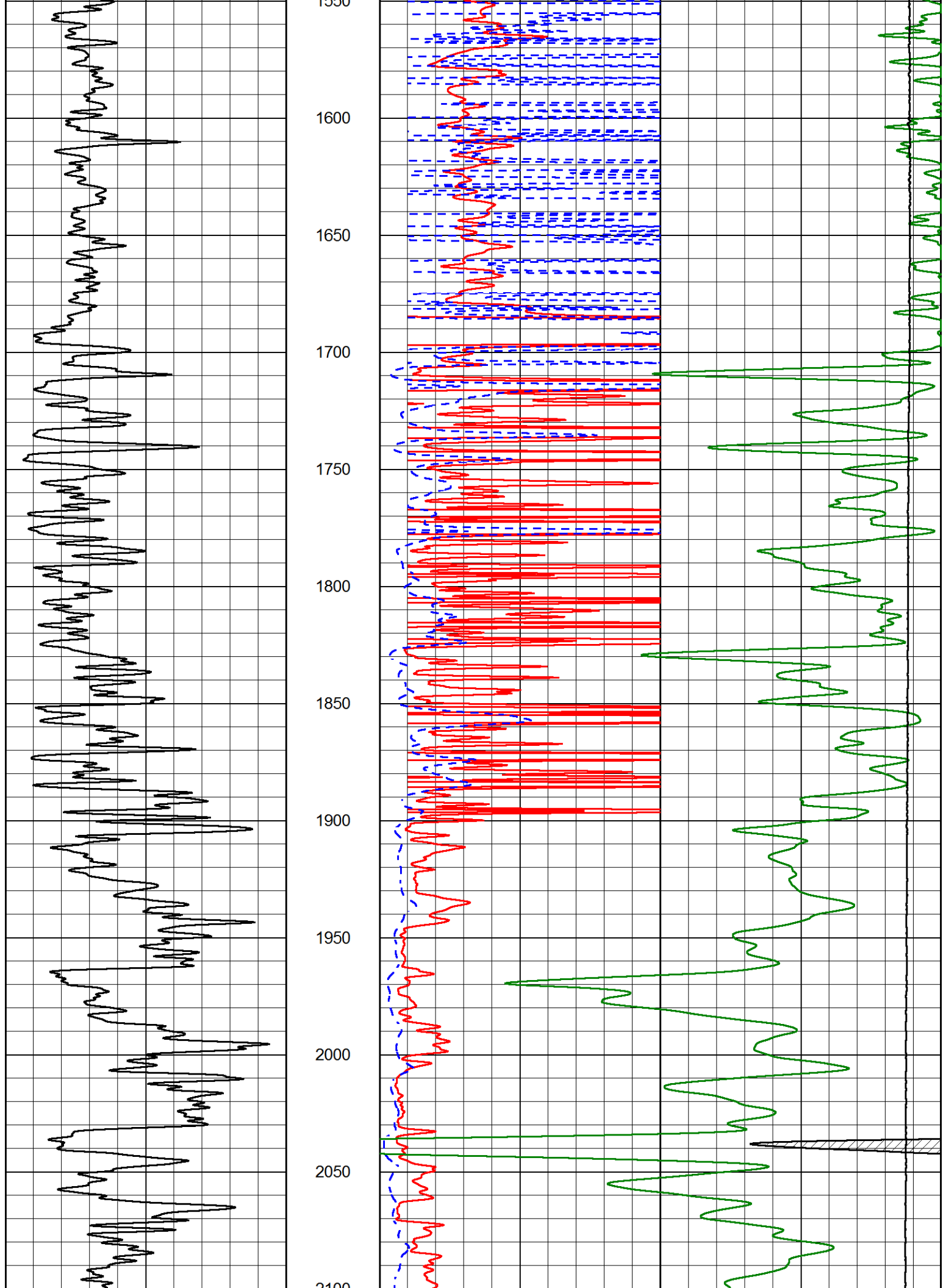
Database File rama_ruthie t 2-26.db
 Dataset Pathname stkml/pass6.1
 Presentation Format _dil2in
 Dataset Creation Mon May 24 14:52:04 2021
 Charted by Depth in Feet scaled 1:600

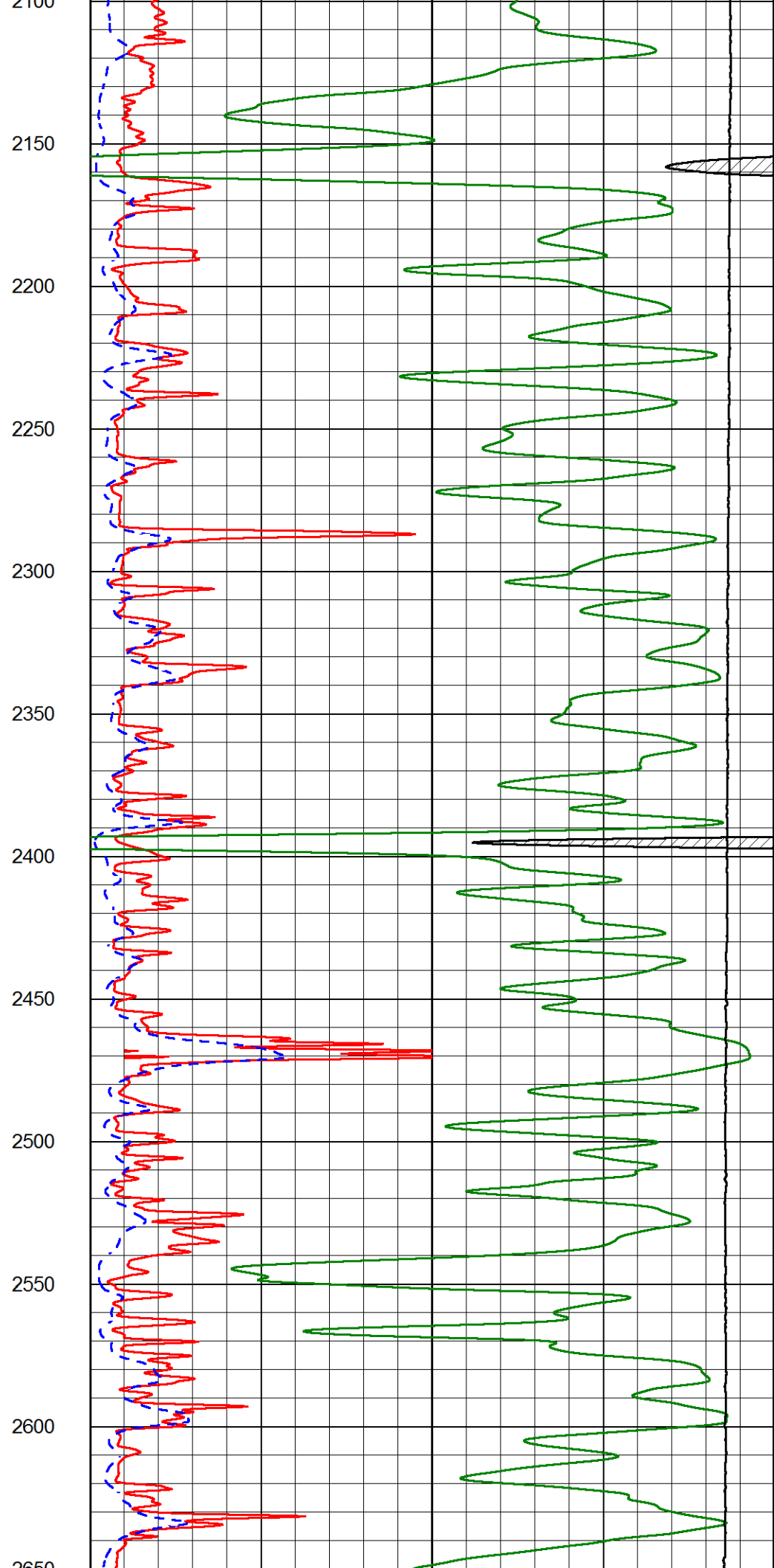
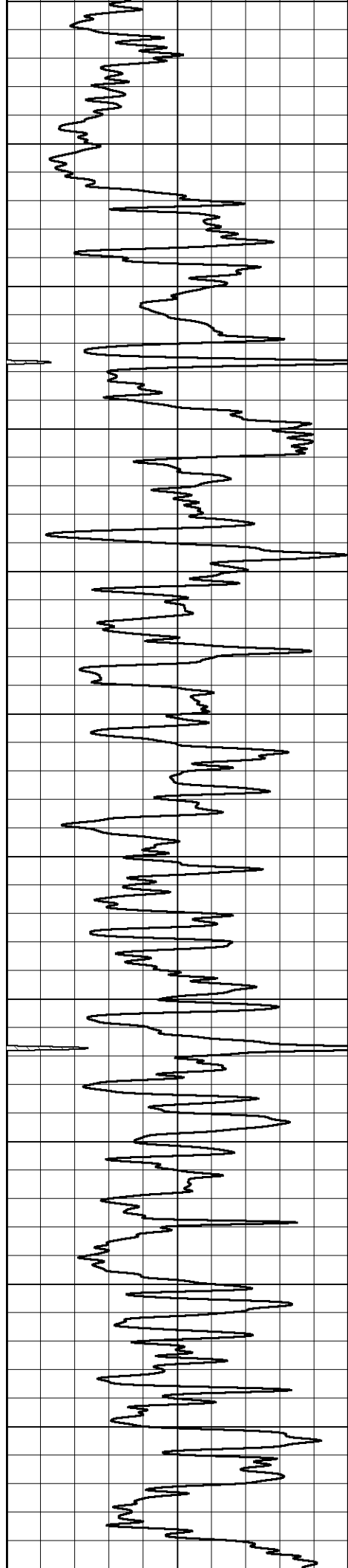
GAMMA RAY (GAPI) 150	1000	CONDUCTIVITY (mmho/m)	0
	15000	Line Tension (lb)	0
	0	RLL3 (Ohm-m)	50
	0	RILD (Ohm-m)	50
	50	RLL3 (Ohm-m)	100
	50	Deep Resistivity (Ohm-m)	200

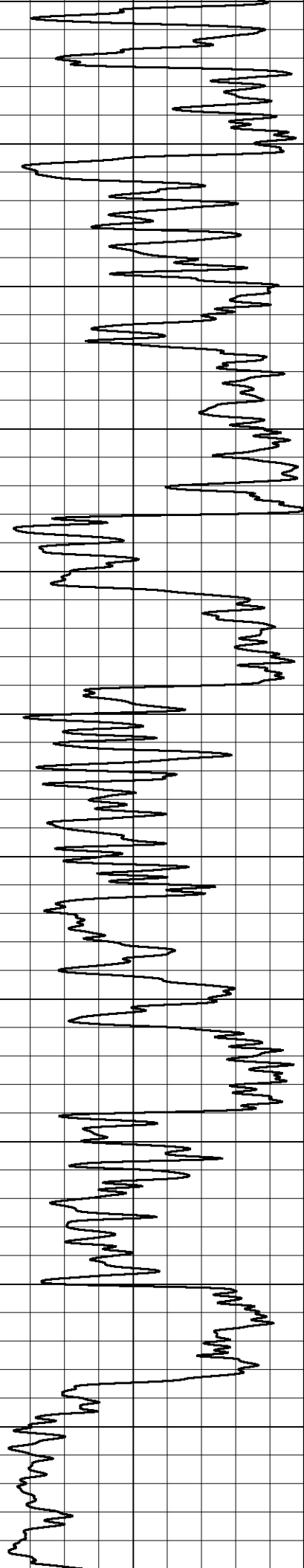




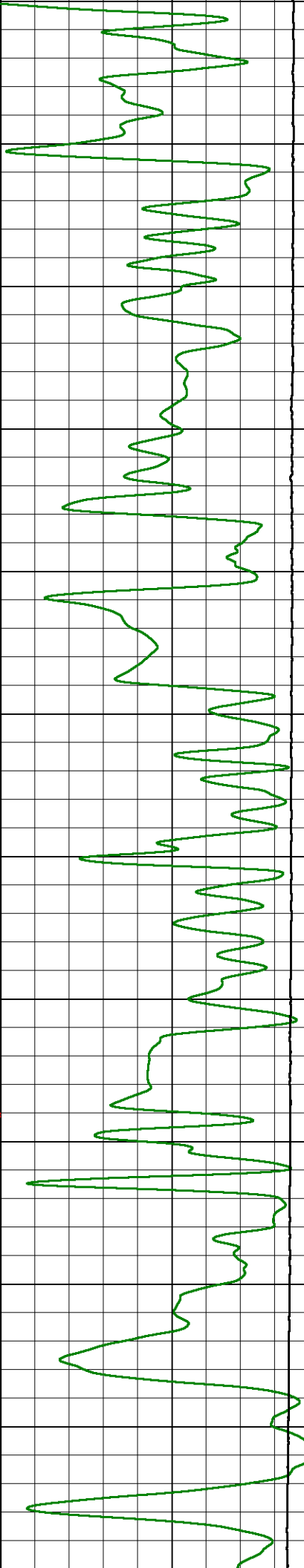
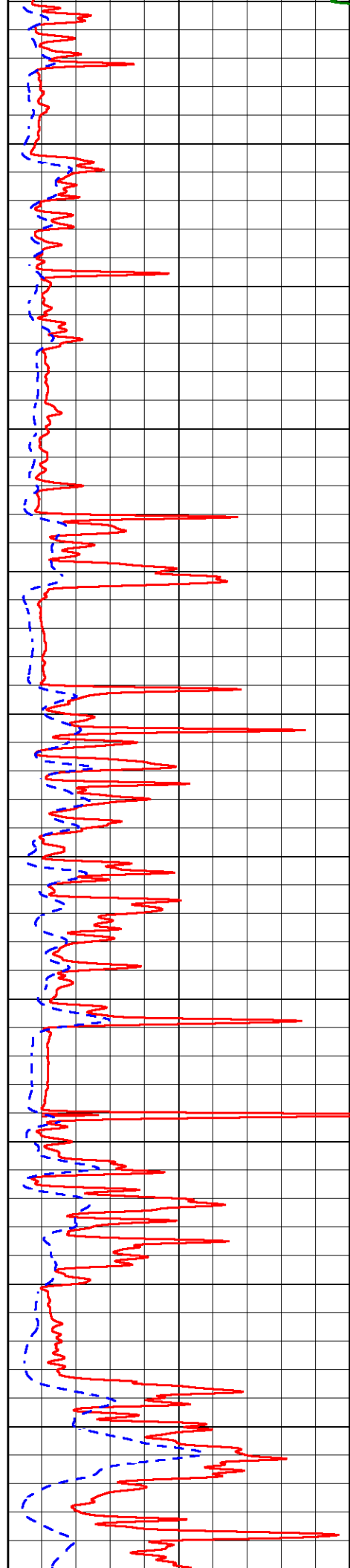


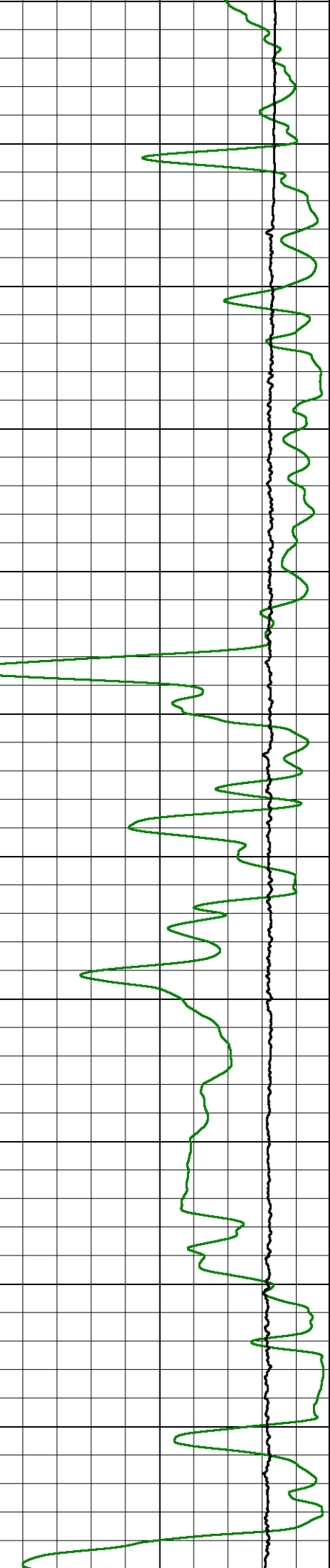
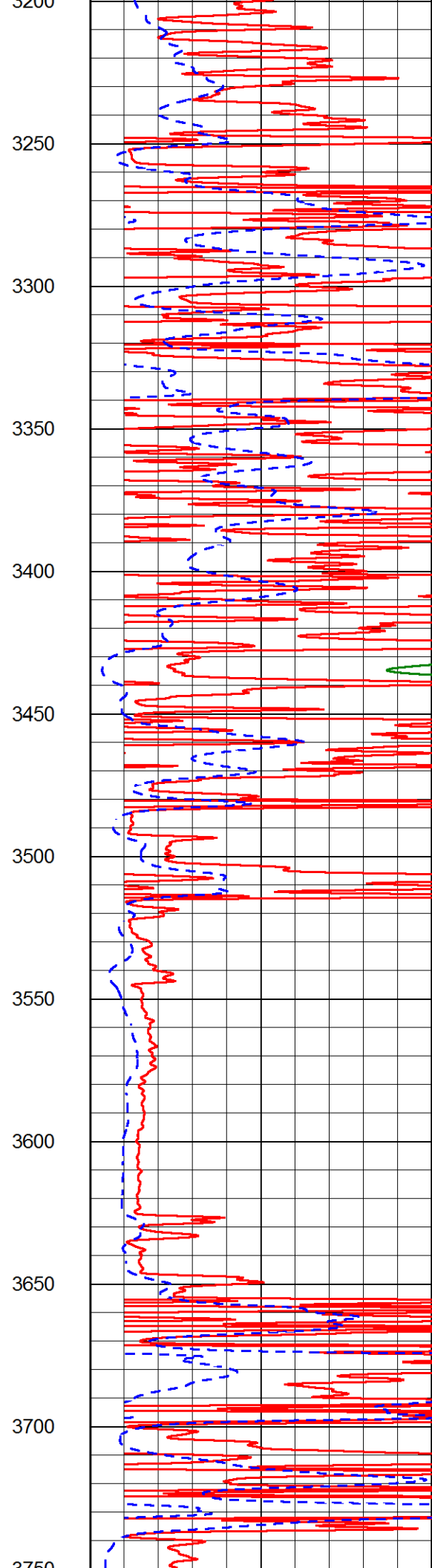
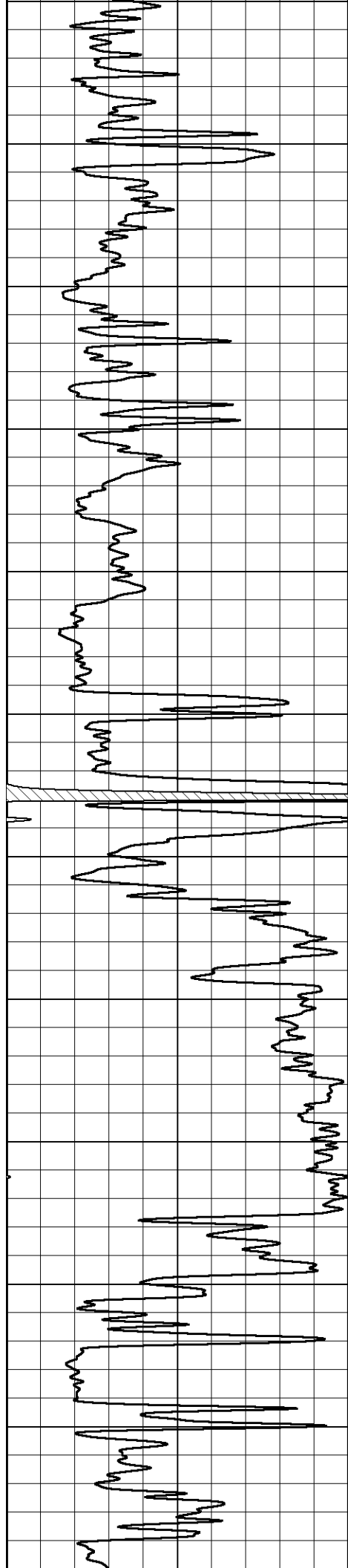


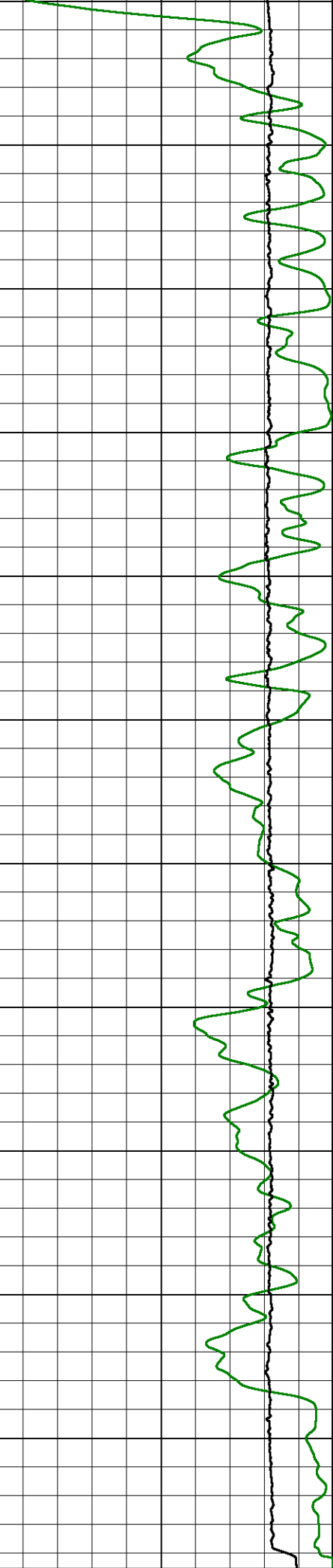
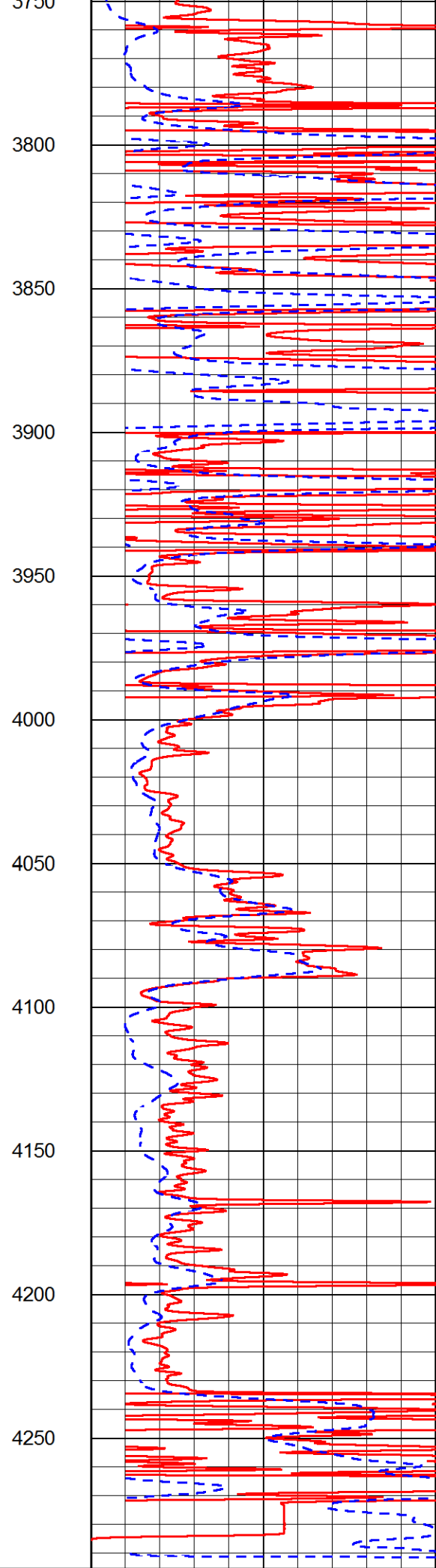
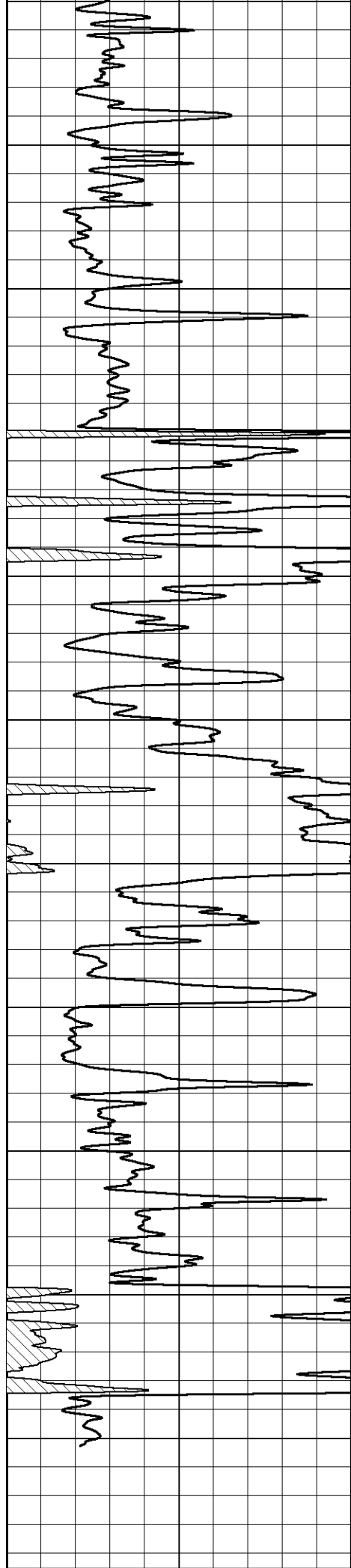




2650
2700
2750
2800
2850
2900
2950
3000
3050
3100
3150
3200







GAMMA RAY

1000 CONDUCTIVITY (mmho/m) 0

15000 Line Tension (lb) 0

0 (GAPI) 150

0 RLL3 (Ohm-m) 50

0 RILD (Ohm-m) 50

50 RLL3 (Ohm-m) 100

50 Deep Resistivity (Ohm-m) 200



MIDWEST WIRELINE

ANHYDRITE SECTION

MAIN PASS

Database File rama_ruthie t 2-26.db
 Dataset Pathname stkml/pass7.1
 Presentation Format _dil
 Dataset Creation Mon May 24 14:52:15 2021
 Charted by Depth in Feet scaled 1:240

0 GAMMA RAY (GAPI) 150

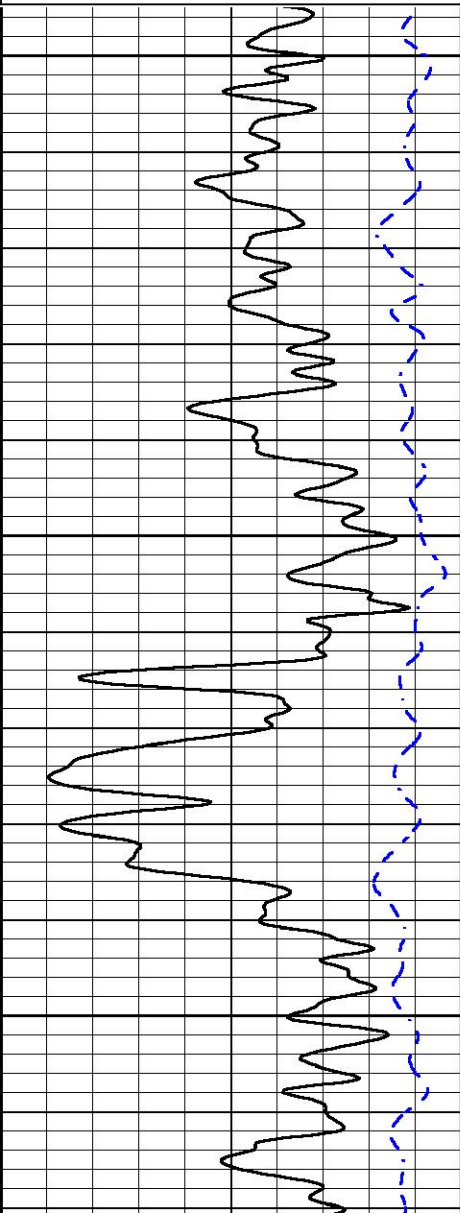
-200 SP (mV) 0

0.2 DEEP RESISTIVITY (Ohm-m) 2000

0.2 MEDIUM RESISTIVITY (Ohm-m) 2000

0.2 RLL3 (Ohm-m) 2000

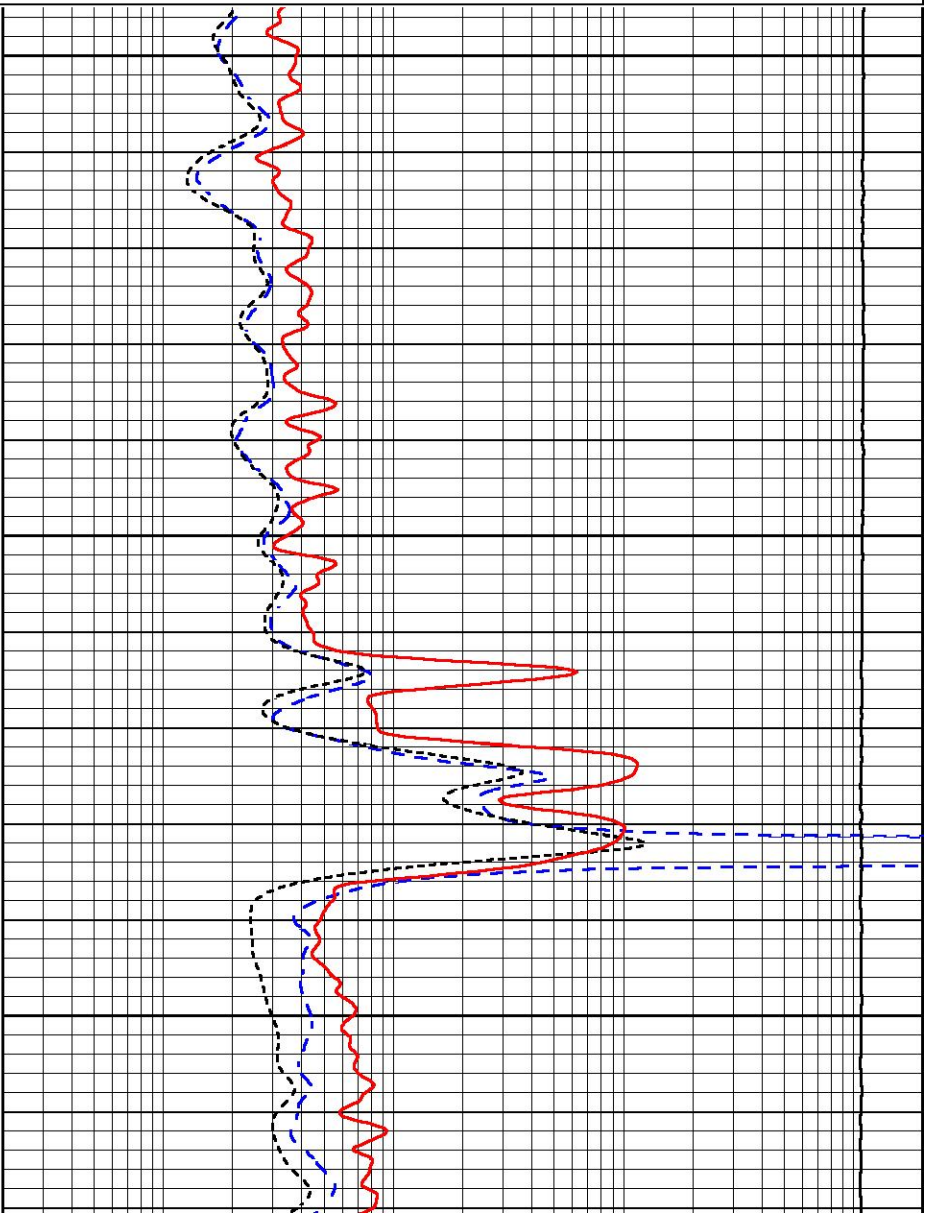
10000 LINE TENSION (lb) 0

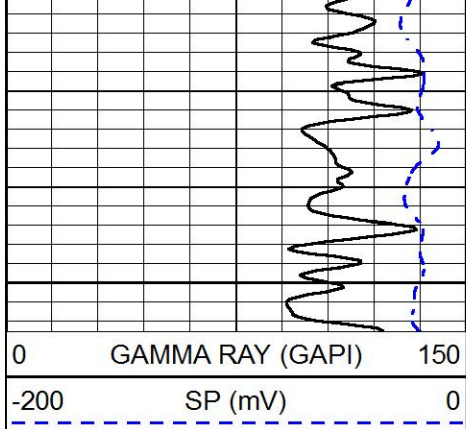


700

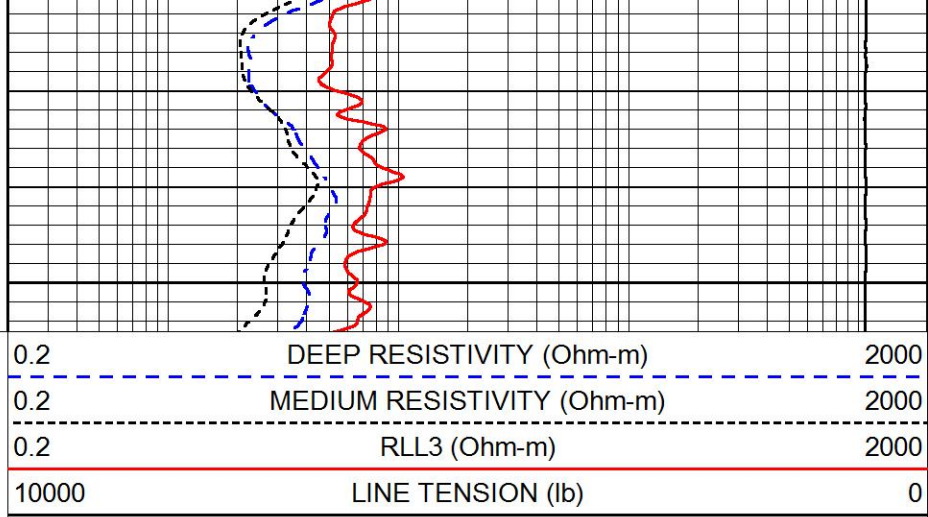
750

800





850



0 GAMMA RAY (GAPI) 150
-200 SP (mV) 0

0.2 DEEP RESISTIVITY (Ohm-m) 2000
0.2 MEDIUM RESISTIVITY (Ohm-m) 2000
0.2 RLL3 (Ohm-m) 2000
10000 LINE TENSION (lb) 0



MIDWEST WIRELINE

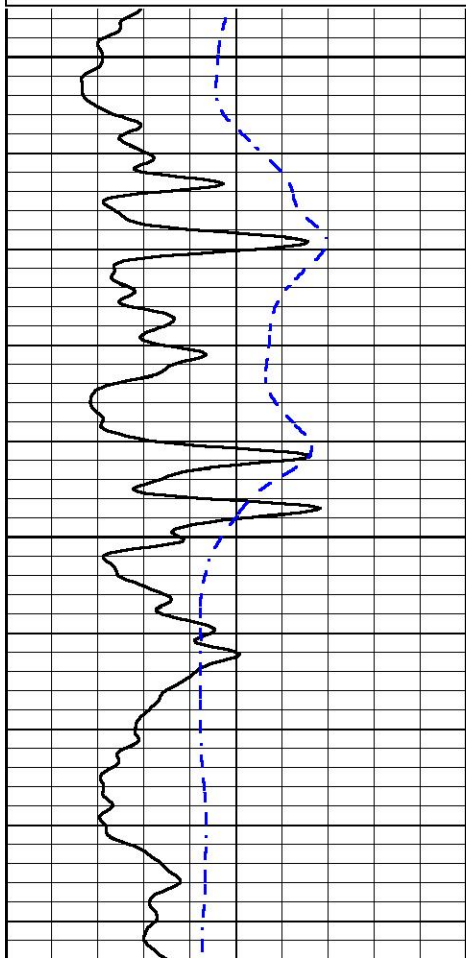
DETAIL SECTION

MAIN PASS

Database File rama_ruthie t 2-26.db
Dataset Pathname stkml/pass4.1
Presentation Format _dil
Dataset Creation Mon May 24 14:25:55 2021
Charted by Depth in Feet scaled 1:240

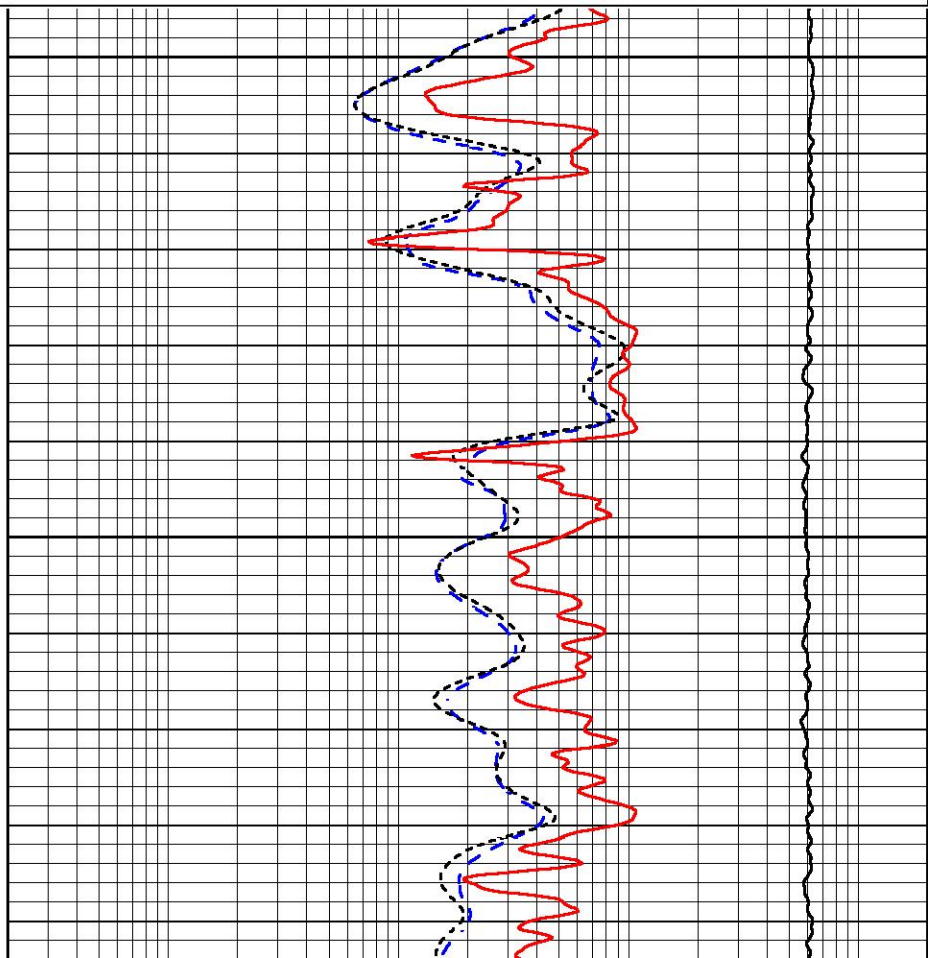
0 GAMMA RAY (GAPI) 150
-200 SP (mV) 0

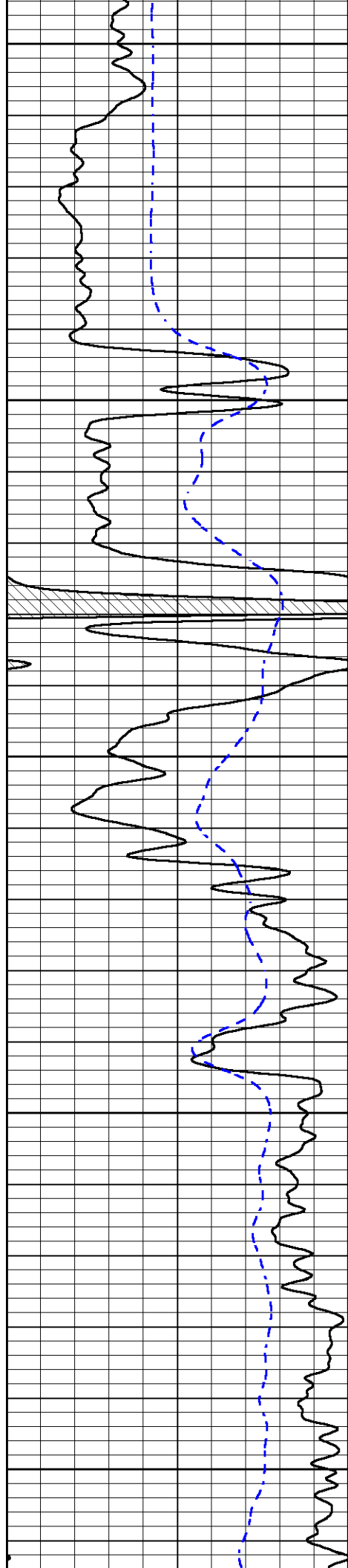
0.2 DEEP RESISTIVITY (Ohm-m) 2000
0.2 MEDIUM RESISTIVITY (Ohm-m) 2000
0.2 RLL3 (Ohm-m) 2000
10000 LINE TENSION (lb) 0



3300

3350





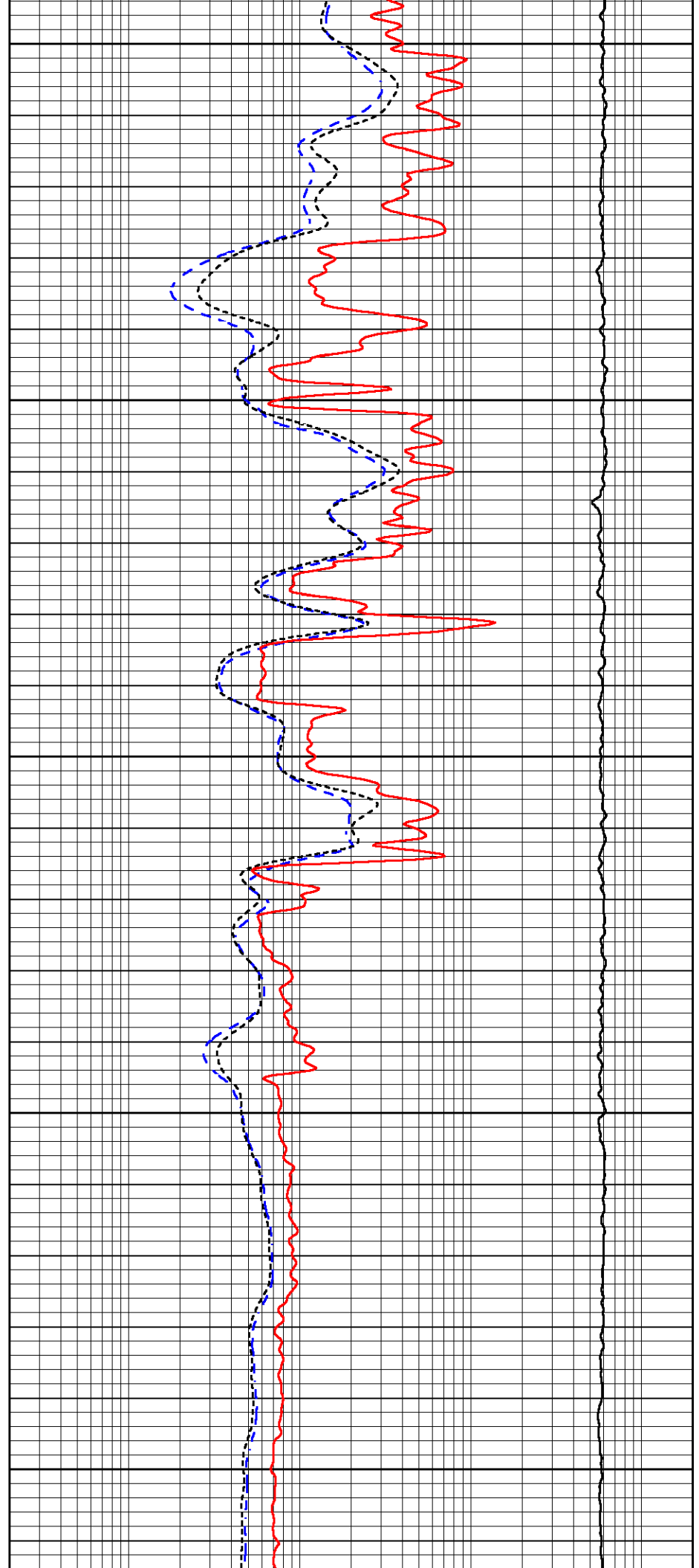
3400

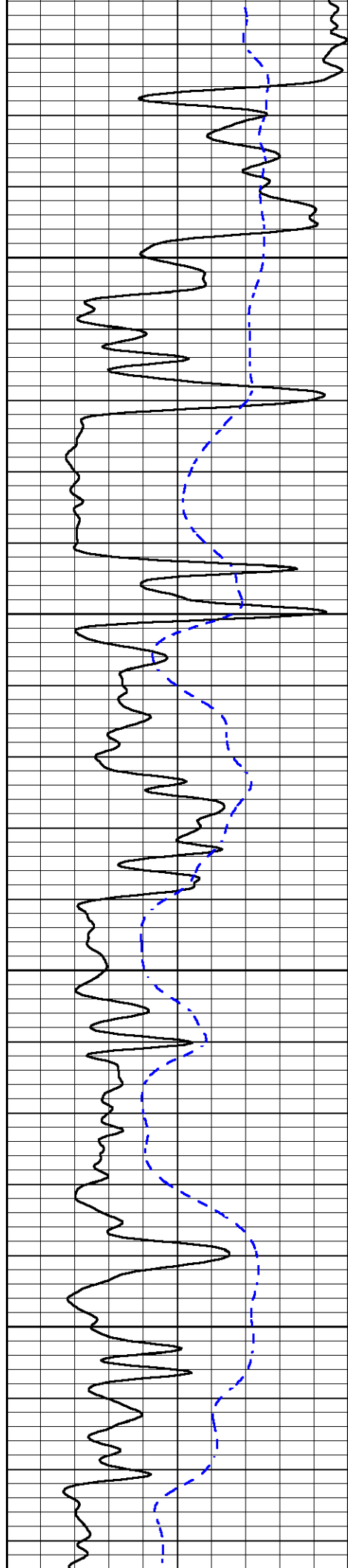
3450

3500

3550

3600



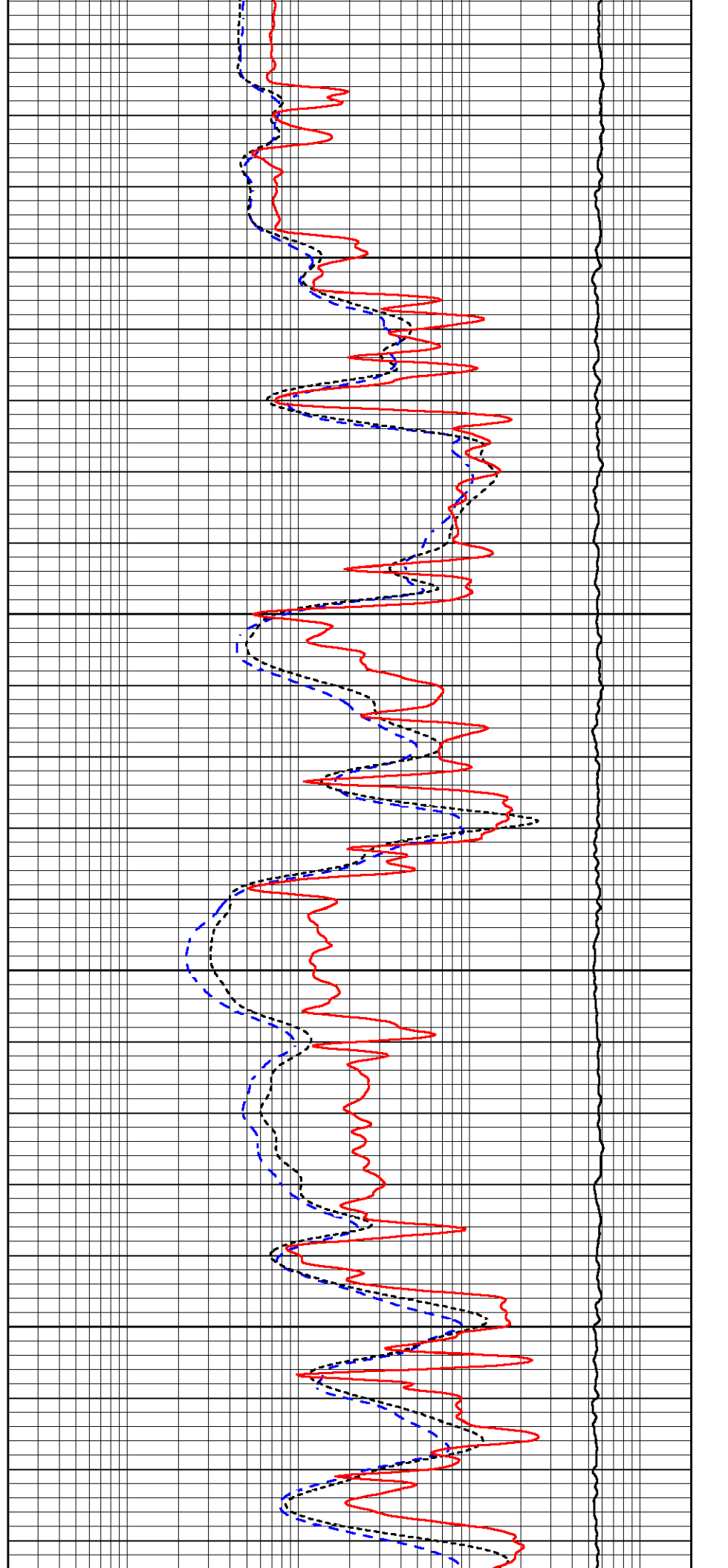


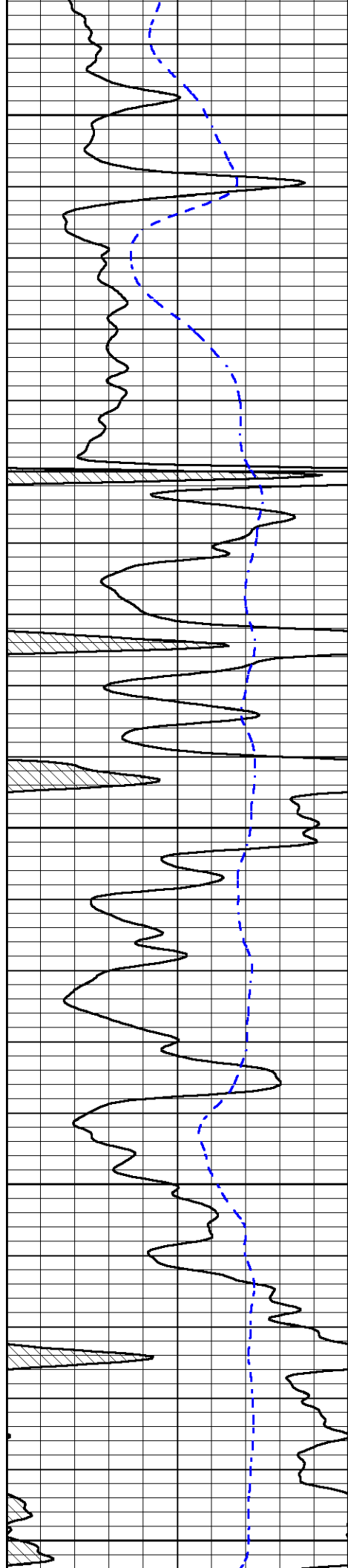
3650

3700

3750

3800





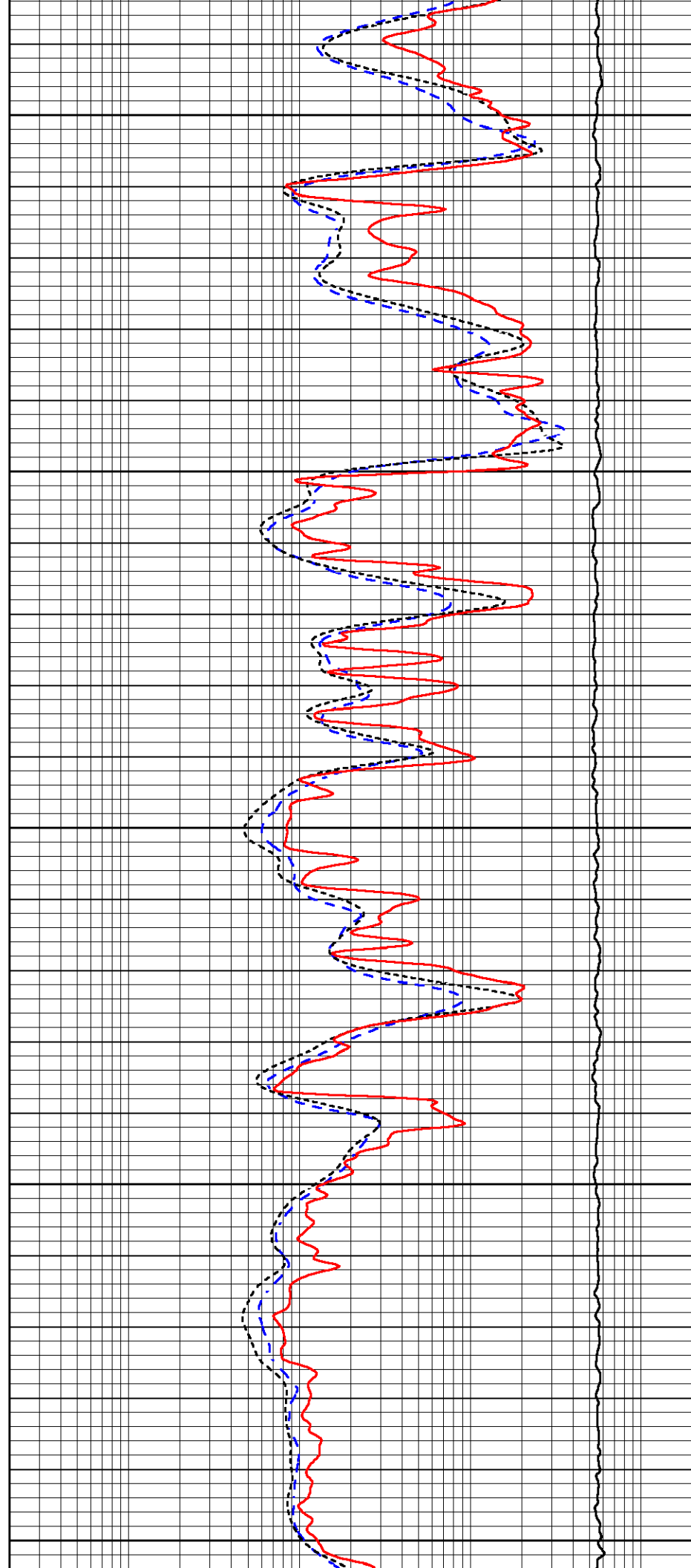
3850

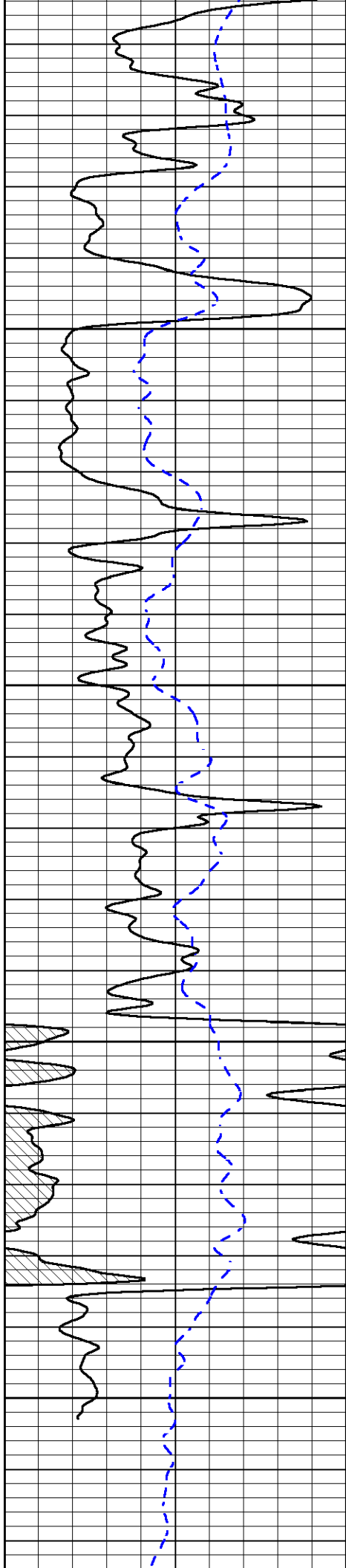
3900

3950

4000

4050



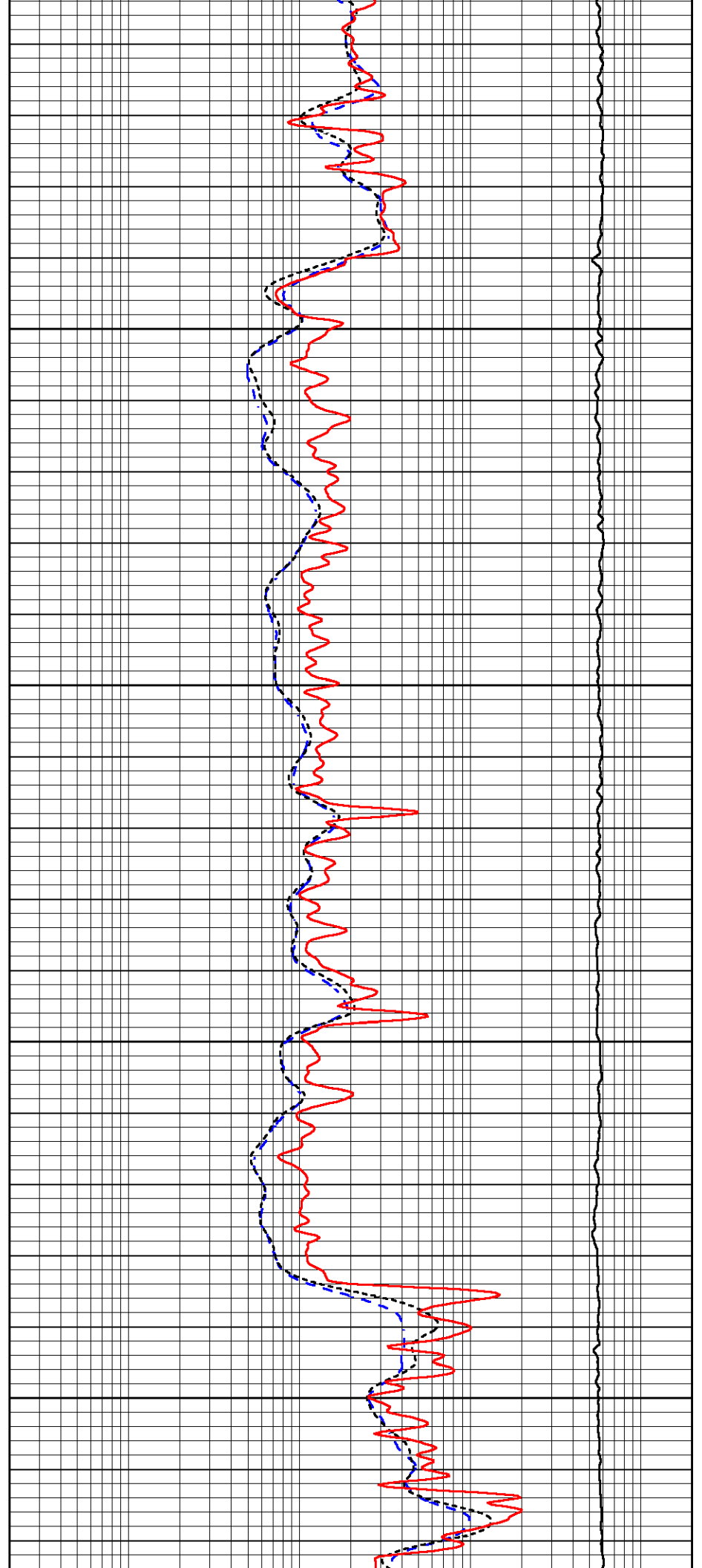


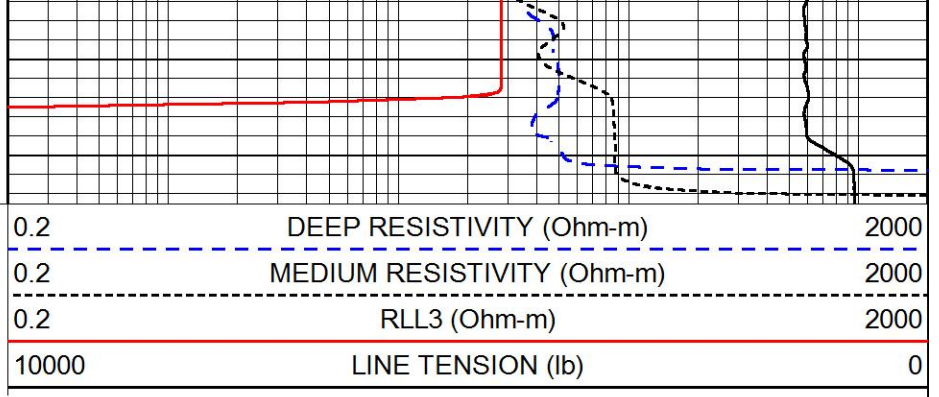
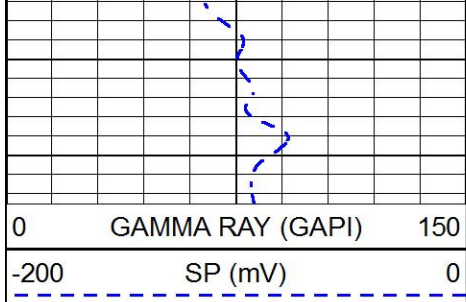
4100

4150

4200

4250





MIDWEST WIRELINE

Company RAMA Operating Co., Inc.
 Well Ruthie 'T' #2-26
 Field Leiss Southeast
 County Stafford
 State Kansas