

MICRO LOG



Company MUSTANG ENERGY CORP.		Company MUSTANG ENERGY CORP.	
Well	GARY #1	Well	GARY #1
Field	STAR	Field	STAR
County	ELLIS	County	ELLIS
State	KANSAS	State	KANSAS
Location:	1705' FSL & 1940' FEL	API # :	15-051-27003-0000
Permanent Datum	GROUND LEVEL	Elevation	2145
Log Measured From	KELLY BUSHING 7' A.G.L.	K.B.	2152
Drilling Measured From	KELLY BUSHING	D.F.	2150
		G.L.	2145
SEC 31	TWP 11S	RGE	19W
Run Number	TWO		
Depth Driller	3790		
Depth Logger	3790		
Bottom Logged Interval	3788		
Top Log Interval	3100		
Casing Driller	8 5/8" @ 223		
Casing Logger	223		
Bit Size	7 7/8"		
Type Fluid in Hole	CHEMICAL MUD		
Density / Viscosity	9.1/58		
pH / Fluid Loss	10.0/8.0		
Source of Sample	FLOWLINE		
Rm @ Meas. Temp	.8@ 70F		
Rmf @ Meas. Temp	.6@ 70F		
Rmc @ Meas. Temp	.96 @ 70F		
Source of Rmf / Rmc	MEASURED		
Rm @ BHT	.49@ 114F		
Time Circulation Stopped	2 HOURS		
Time Logger on Bottom	////		
Maximum Recorded Temperature	114F		
Equipment Number	1523		
Location	HAYS, KANSAS		
Recorded By	GUS PFANENSTIEL		
Witnessed By	CAMERON BRIN		

<<< Fold Here >>>

All interpretations are opinions based on inferences from electrical or other measurements and we cannot and do not guarantee the accuracy or correctness of any interpretation, and we shall not, except in the case of gross or willful negligence on our part, be liable or responsible for any loss, costs, damages, or expenses incurred or sustained by anyone resulting from any interpretation made by any of our officers, agents or employees. These interpretations are also subject to our general terms and conditions set out in our current Price Schedule.

Comments

THANK YOU FOR USING ELI WIRELINE, HAYS, KS. (785) 628-6395

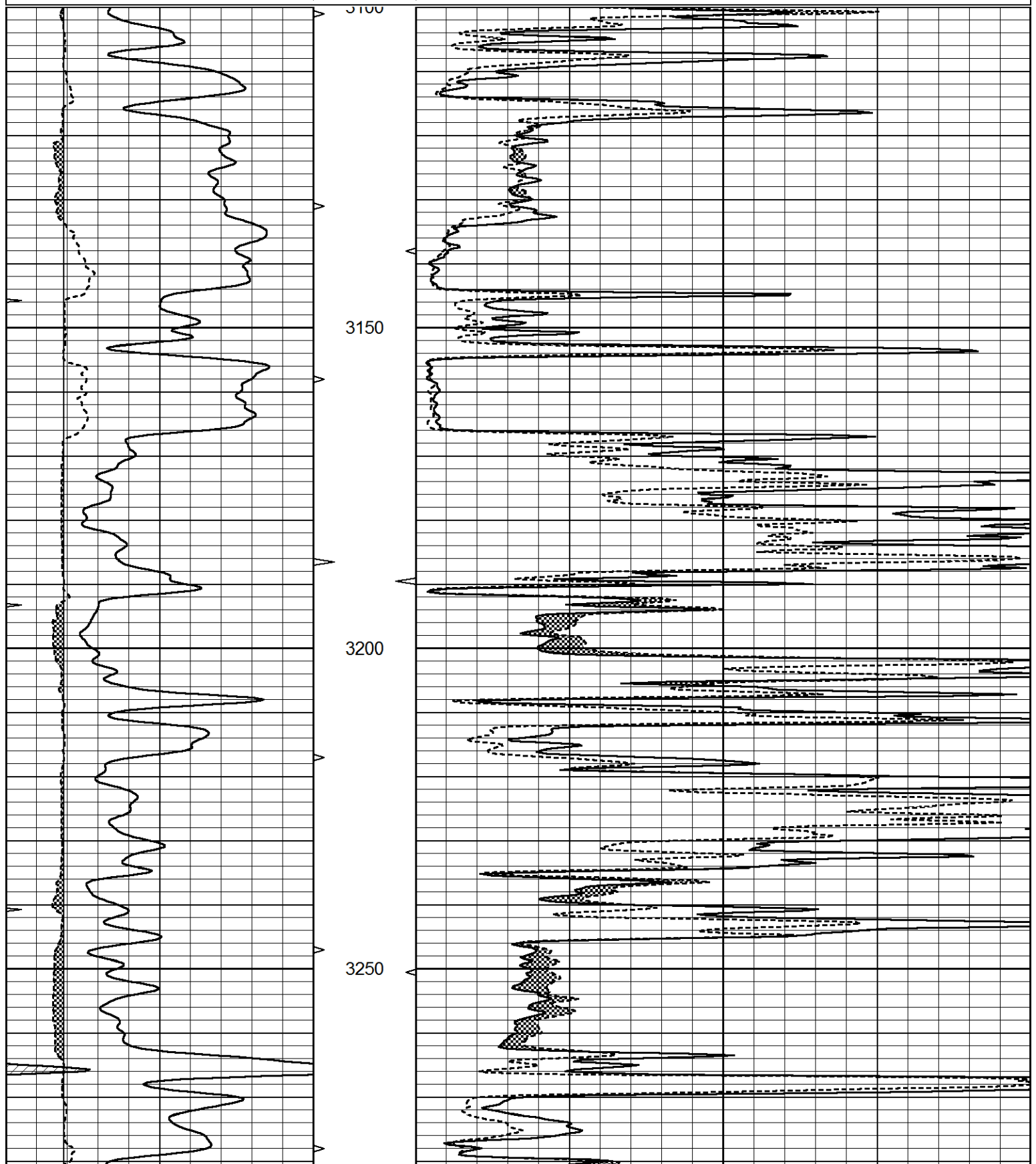
DIRECTIONS: YOCEMENTO NORTH TO HOMESTEAD RD. WEST 2 MILES NORTH 1/2, WEST INTO.

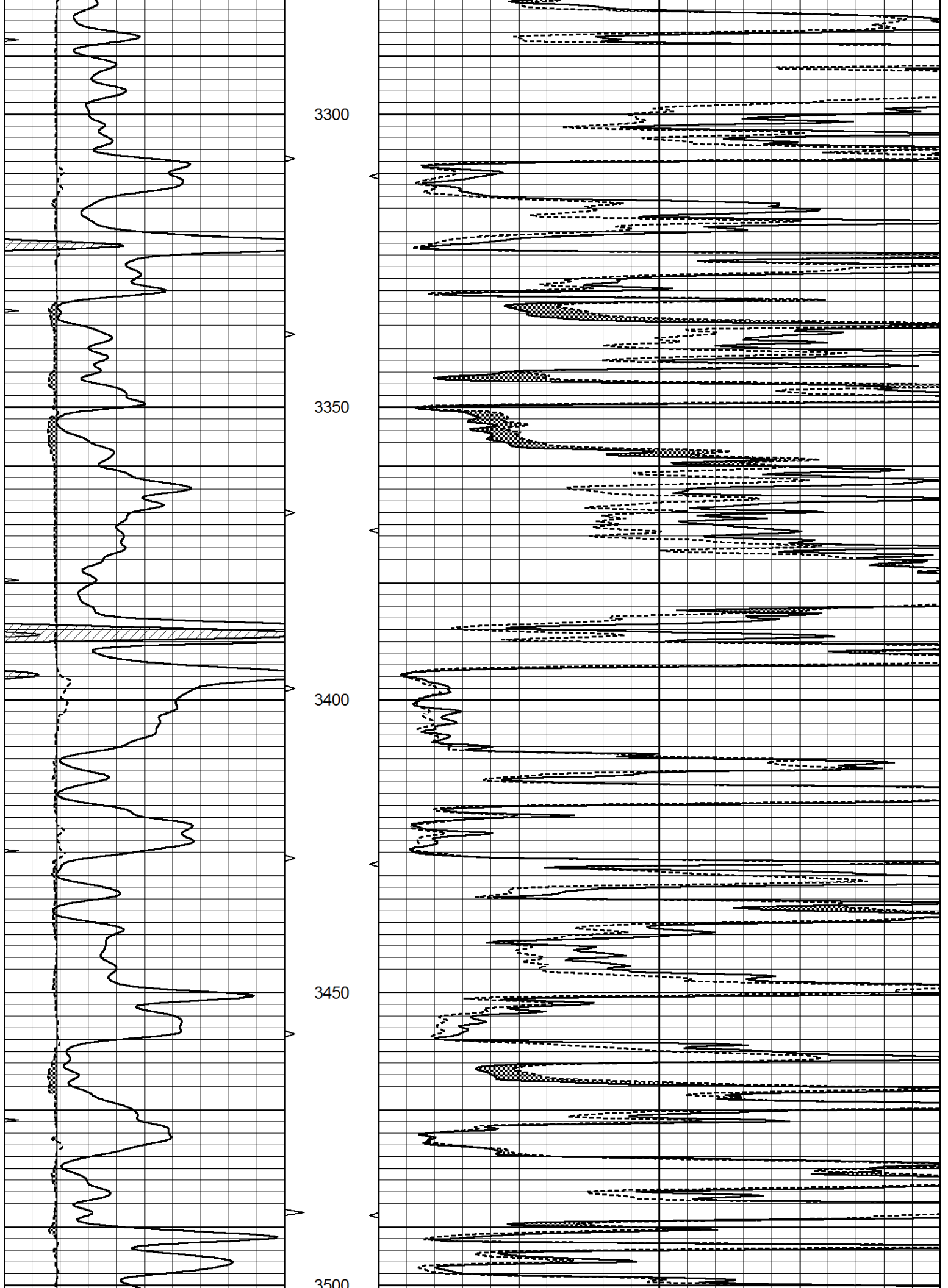


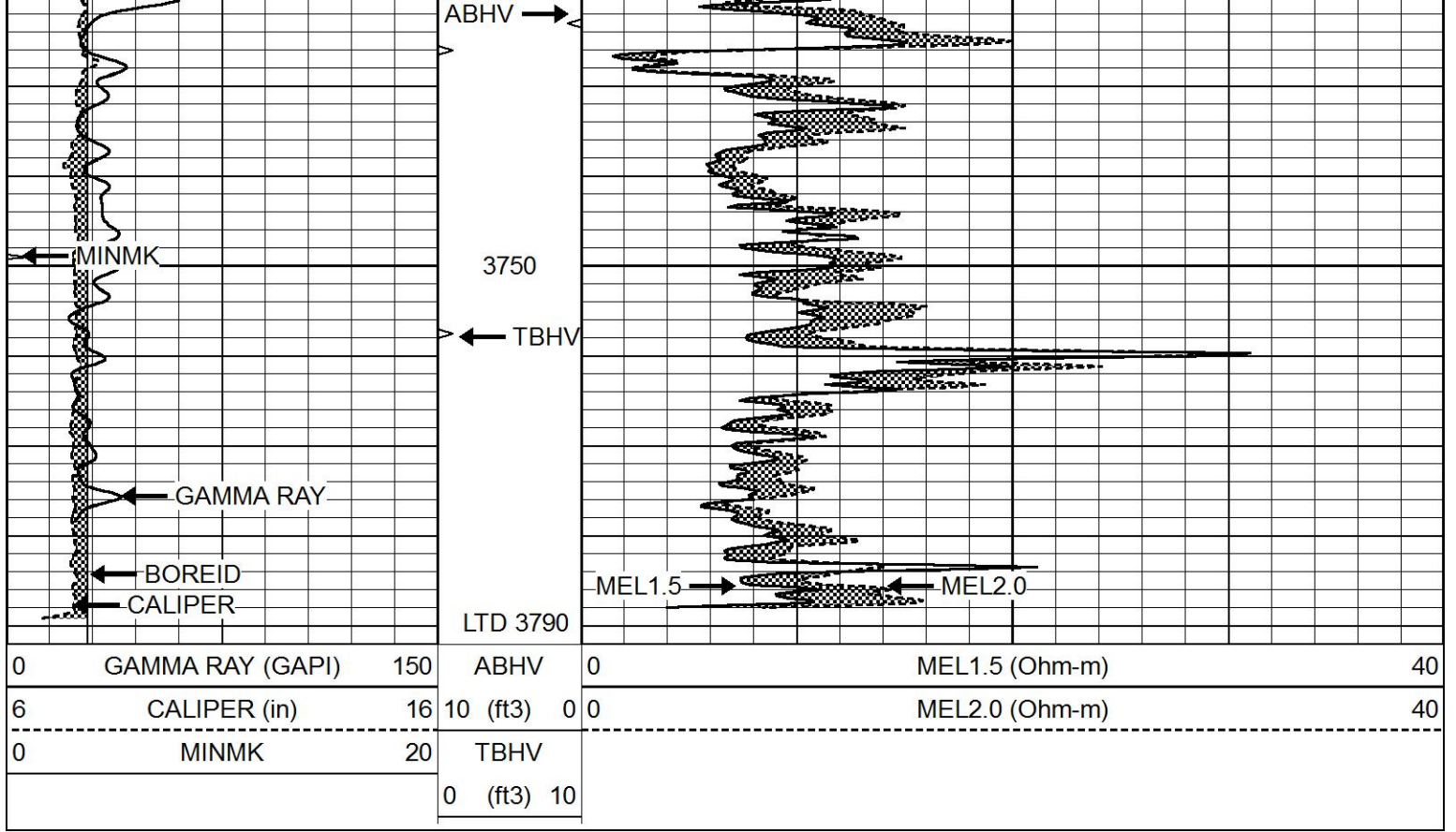
MAIN PASS

Database File 5440ddn.db
 Dataset Pathname pass5.1
 Presentation Format _micro
 Dataset Creation Sat Jun 05 17:46:59 2021
 Charted by Depth in Feet scaled 1:240

0	GAMMA RAY (GAPI)	150	ABHV	0	MEL1.5 (Ohm-m)	40
6	CALIPER (in)	16	10 (ft3)	0	MEL2.0 (Ohm-m)	40
0	MINMK	20	TBHV			
			0 (ft3)	10		



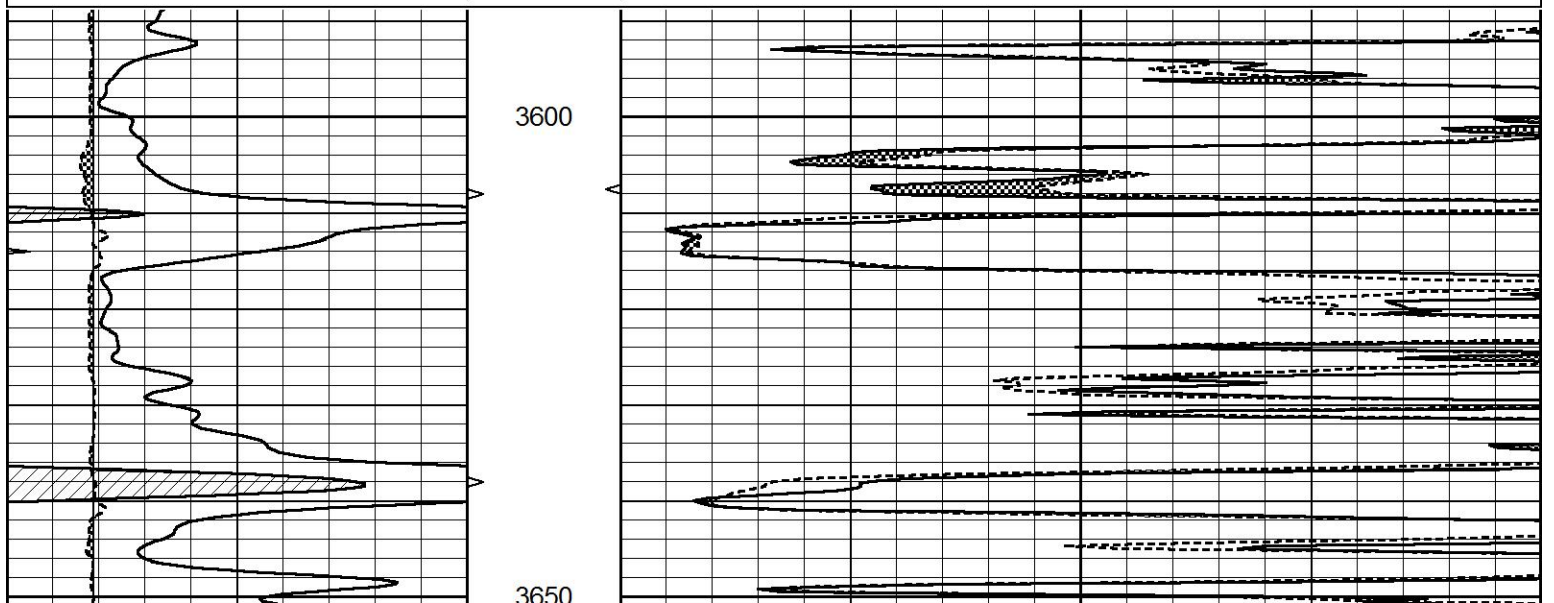


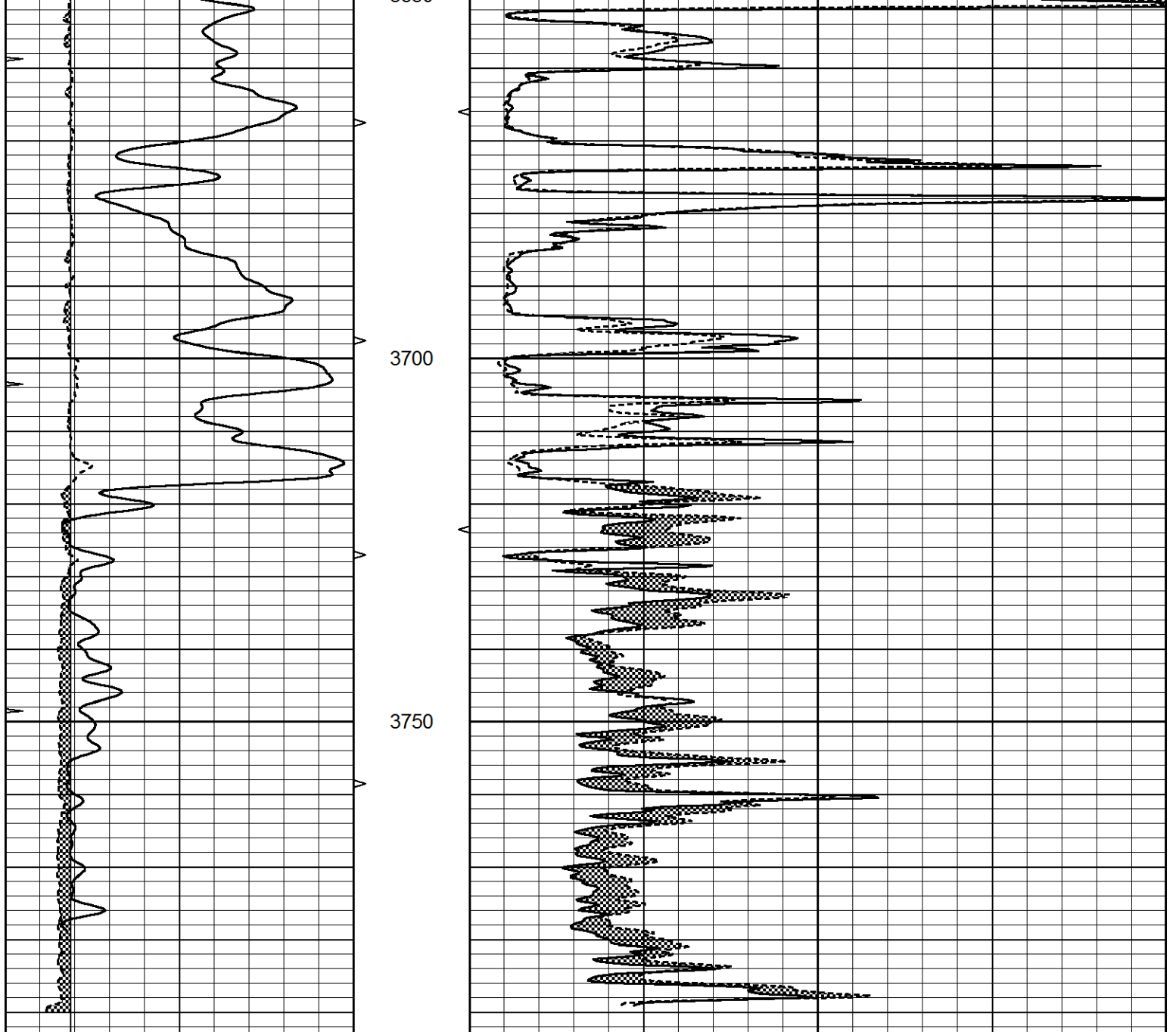


REPEAT SECTION

Database File 5440ddn.db
 Dataset Pathname pass4.1
 Presentation Format _micro
 Dataset Creation Sat Jun 05 17:29:23 2021
 Charted by Depth in Feet scaled 1:240

0	GAMMA RAY (GAPI)	150	ABHV	0	MEL1.5 (Ohm-m)	40
6	CALIPER (in)	16	10 (ft3)	0 0	MEL2.0 (Ohm-m)	40
0	MINMK	20	TBHV			
			0 (ft3)	10		





0	GAMMA RAY (GAPI)	150	ABHV	0	MEL1.5 (Ohm-m)	40
6	CALIPER (in)	16	10 (ft3)	0	MEL2.0 (Ohm-m)	40
0	MINMK	20	TBHV			
			0 (ft3)	10		

Calibration Report

Database File 5440ddn.db
 Dataset Pathname pass4.1
 Dataset Creation Sat Jun 05 17:29:23 2021

MICRO Calibration Report

Serial Number: Micro1
 Tool Model: Probel
 Performed: Sat Apr 10 18:53:52 2021

Caliper Calibration: Gain=2.815 Offset=4.402

References Low Cal High Cal
 Readings 8.500 13.500
 0.987 2.662

Readings

0.667

2.663

1.5" Calibration:

Gain=36.134

Offset=-1.000

References
Readings

Low Cal
0.000
0.004

High Cal
20.000
0.832

2" Calibration:

Gain=38.000

Offset=-0.800

References
Readings

Low Cal
0.000
0.022

High Cal
20.000
0.793

Gamma Ray Calibration Report

Serial Number:
Tool Model:
Performed:

GR5
OPEN
Thu Jul 30 23:16:16 2020

Calibrator Value:

1.0

GAPI

Background Reading:
Calibrator Reading:

0.0
1.0

cps
cps

Sensitivity:

0.7200

GAPI/cps