



MIDWEST WIRELINE

DUAL COMP POROSITY LOG

Company **New Age Oil, LLC**
 Well **Bunker #3**
 Field **Unnamed**
 County **Trego** State **Kansas**

Company **New Age Oil, LLC**
 Well **Bunker #3**
 Field **Unnamed**
 County **Trego**
 State **Kansas**

Location: **API #: 15-195-23117-00-00**
SE - NW - NW - SE
2200' FSL & 2200' FEL
SEC 24 TWP 12S RGE 22W
 Permanent Datum **Ground Level** Elevation **2339'**
 Log Measured From **Kelly Bushing**
 Drilling Measured From **Kelly Bushing**
 Other Services **DIL/MEL**
 K.B. **2347'**
 D.F. **N/A**
 G.L. **2339'**

Date	5/3/2021						
Run Number	One						
Type Log	CNL/CDL						
Depth Driller	4060'						
Depth Logger	4060'						
Bottom Logged Interval	4026'						
Top Logged Interval	3300'						
Type Fluid In Hole	Chemical						
Salinity, PPM CL	4000						
Density	9.1						
Level	Full						
Max. Rec. Temp. F	117						
Operating Rig Time	3 Hours						
Equipment -- Location	P-24 HAYS						
Recorded By	D. Schmidt						
Witnessed By	Logan Behr						
Borehole Record							
Run No.	Bit	From	To	Size	Wgt.	From	To
One	12.25"	0'	221'	8.625"	23#	0'	221'
Two	7.875"	221'	TD				
Casing Record							

<<< Fold Here >>>

All interpretations are opinions based on inferences from electrical or other measurements and Midwest Wireline Services, LLC cannot and does not guarantee the accuracy or correctness of any interpretation, and Midwest Wireline Services, LLC will not be liable or responsible for any loss, costs, damages, or expenses incurred or sustained by anyone resulting from any interpretation made by any of our officers, agents or employees.

Comments

N/A DENOTES NOT AVAILABLE OR NON-APPLICABLE.

I-70 & Ogallah,
 North to Old 40, East to 340th Ave, 1 North,
 East into

Log Measured From: Kelly Bushing 8 Ft. Above Permanent Datum

THANK YOU FOR USING MIDWEST WIRELINE LLC
 785-625-3858

Your Midwest Wireline Crew		This Log Record Was Witnessed By	
Engineer: D. Schmidt	Operator:	Primary Witness: Logan Behr	Secondary Witness:
Operator:	Operator:	Secondary Witness:	Secondary Witness:
Operator:		Secondary Witness:	

Company	Offset (ft)	Schematic	Description	Length (ft)	C.D. (in)	Weight (lb)
---------	-------------	-----------	-------------	-------------	-----------	-------------

Sensor	Offset (ft)	Schematic	Description	Length (ft)	O.D. (in)	Weight (lb)
GR	44.50		GR-M&W (233-M&W)	3.00	3.50	50.00
CNLSC CNSSC	41.40 40.65		CNT-M&W (207-MW)	5.50	3.50	100.00
LSD DCAL SSD	32.35 32.33 31.85		CDL-M&W (817-947)	8.50	4.00	250.00
MCAL MI MN	20.87 20.87 20.87		ML-PSI UDM ML (UDM-01) Stackable Microlog Tools	11.50	4.00	215.00
RLL3F RLL3	15.80 15.80					
CILD	8.00		DIL-PSI HIGH TEMP (952-828)	18.50	3.50	220.00
CILM	4.70					
SP	0.20					

Dataset: new age_bunker 3.db: field/well/stkml/pass4.1
 Total length: 47.00 ft
 Total weight: 835.00 lb
 O.D.: 4.00 in

Log Variables

DatabaseC:\ProgramData\Warrior\Data\new age_bunker 3.db
 Dataset field/well/stkml/pass4.1/_vars_

Top - Bottom

A	BOREID in	BOTTEMP degF	CASEOD in	CASETHCK in	FLUIDDEN g/cc	M	MATRXDEN g/cc
1	7.875	117	5.5	0	1	2	2.71
NPORSEL	PERFS	SNDERR mmho/m	SNDERRM mmho/m	SPSHIFT mV	SRFTEMP degF	SZCOR	TDEPTH ft
Limestone	No	0	0	320	60	Off	4060

Variable Description

A : Cement Factor (a)
 BOREID : Borehole I.D.
 BOTTEMP : Bottom Hole Temperature
 CASEOD : Casing O.D.
 CASETHCK : Casing Thickness
 FLUIDDEN : Fluid Density
 M : Cement Exp (m)
 MATRXDEN : Matrix Density

NPORSEL : Neutron Porosity Curve Select
 PERFS : Perforation Flag
 SNDERR : Deep Sonde Error Correction
 SNDERRM : Medium Sonde Error Correction
 SPSHIFT : S.P. Baseline Offset
 SRFTEMP : Surface Temperature
 SZCOR : CN Size Cor. ?
 TDEPTH : Total Depth



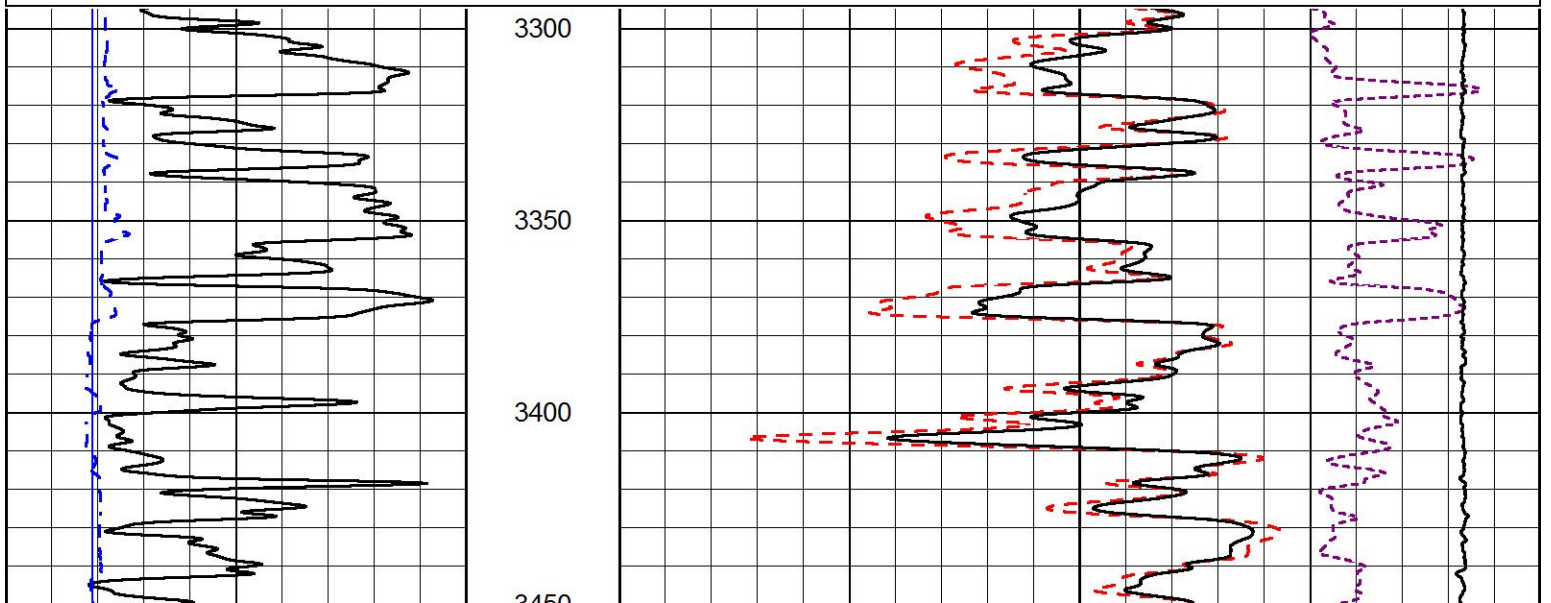
2" SCALE BULK DENSITY

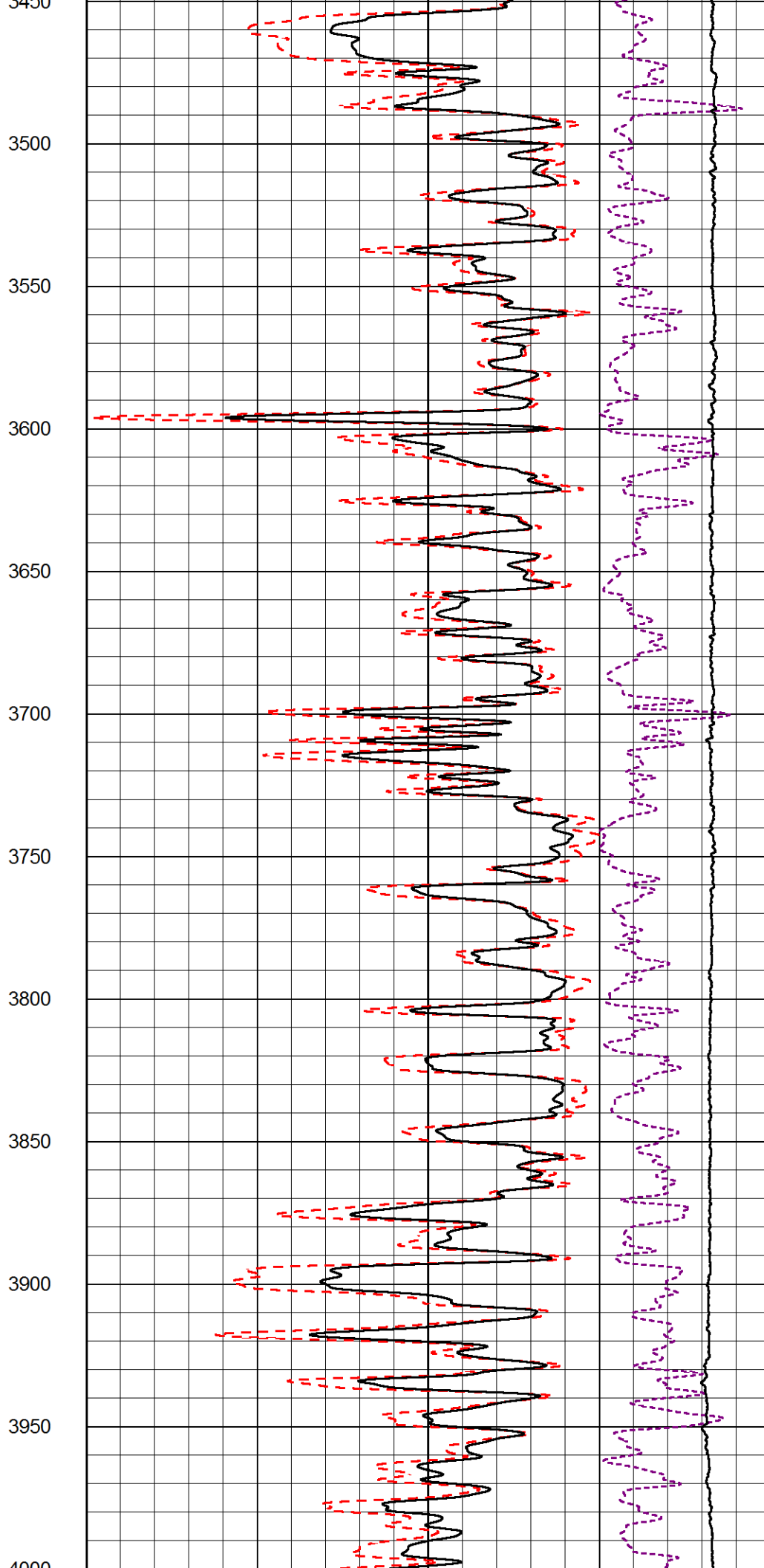
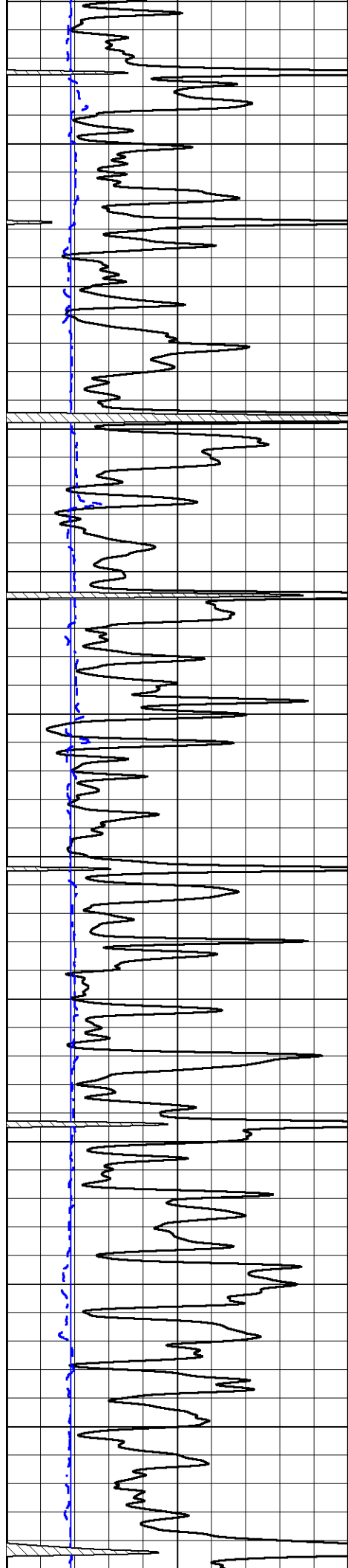
MAIN PASS

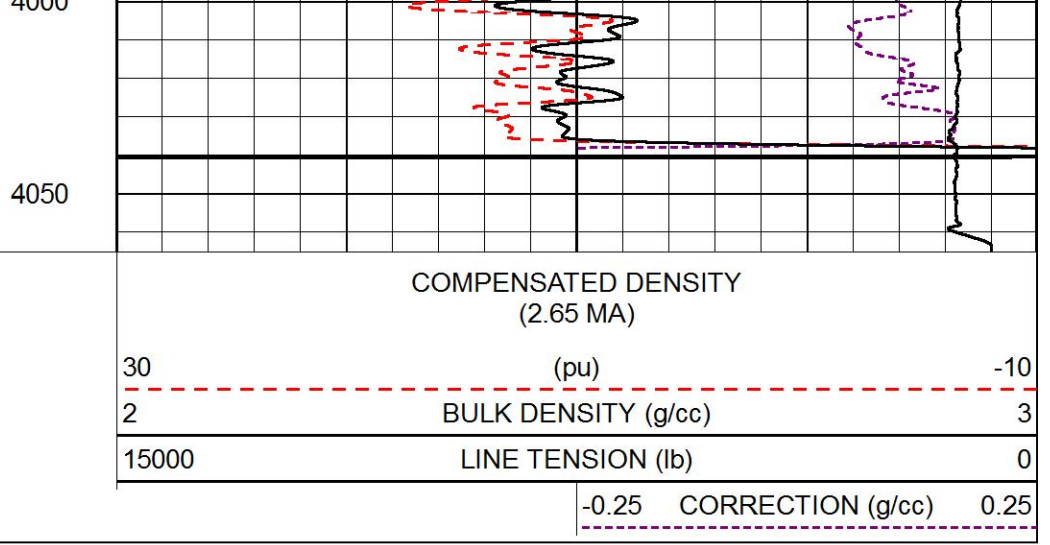
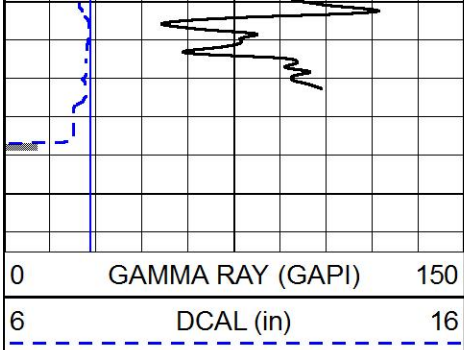
Database File new age_bunker 3.db
 Dataset Pathname stkml/pass5.1
 Presentation Format _cdl
 Dataset Creation Mon May 03 03:24:05 2021
 Charted by Depth in Feet scaled 1:600

0	GAMMA RAY (GAPI)	150
6	DCAL (in)	16

COMPENSATED DENSITY (2.65 MA)	
30	(pu) -10
2	BULK DENSITY (g/cc) 3
15000	LINE TENSION (lb) 0
-0.25	CORRECTION (g/cc) 0.25





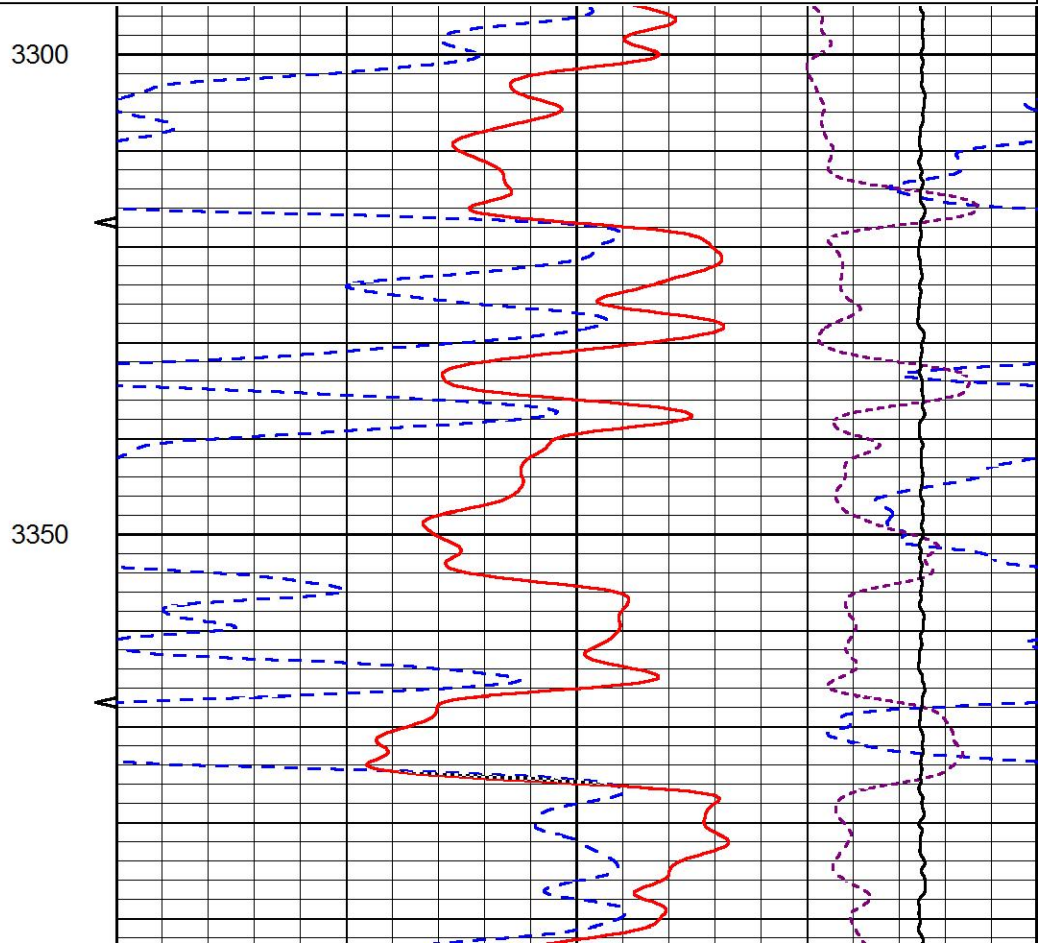
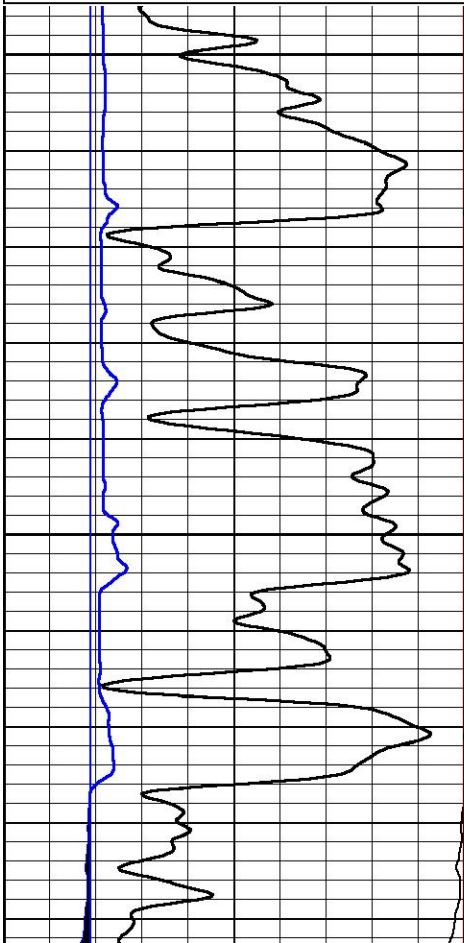
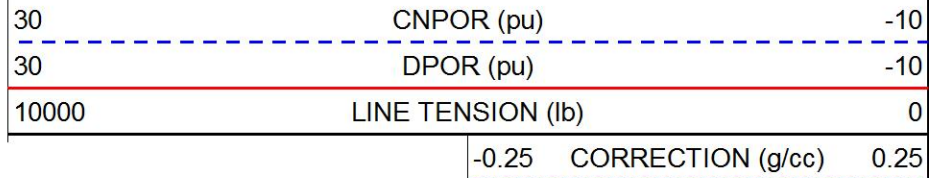
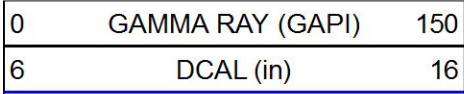


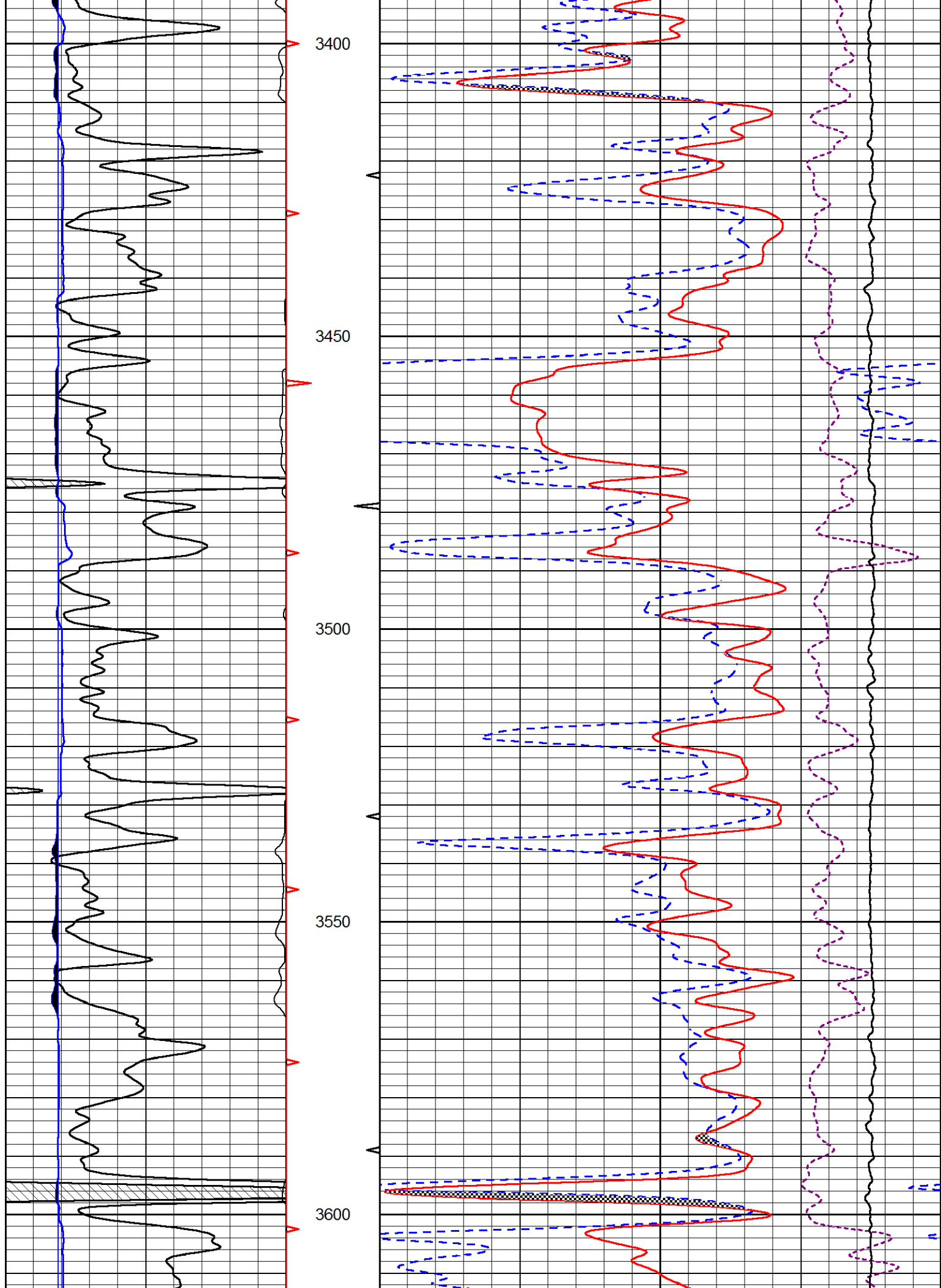
MIDWEST WIRELINE

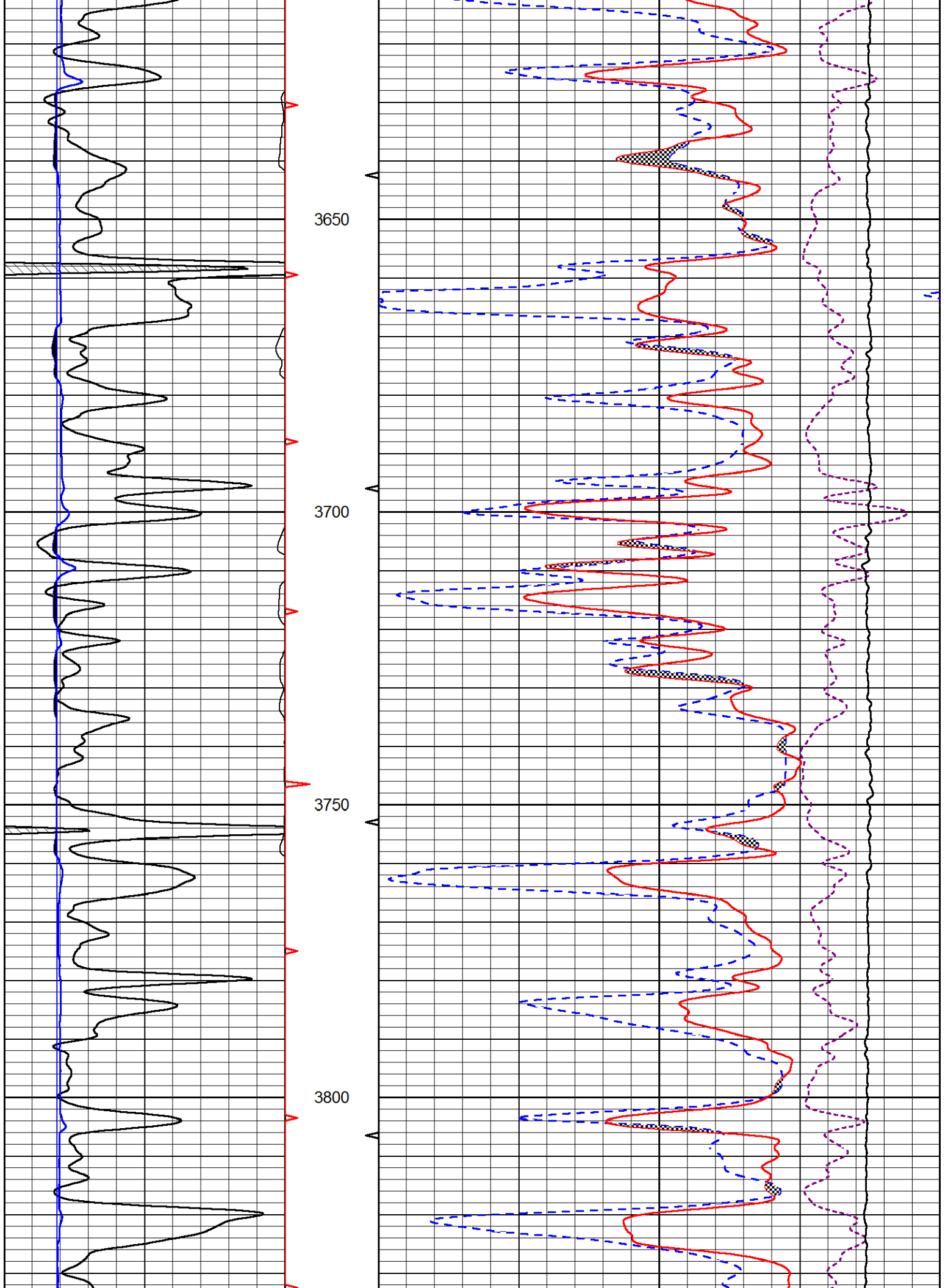
DETAIL SECTION

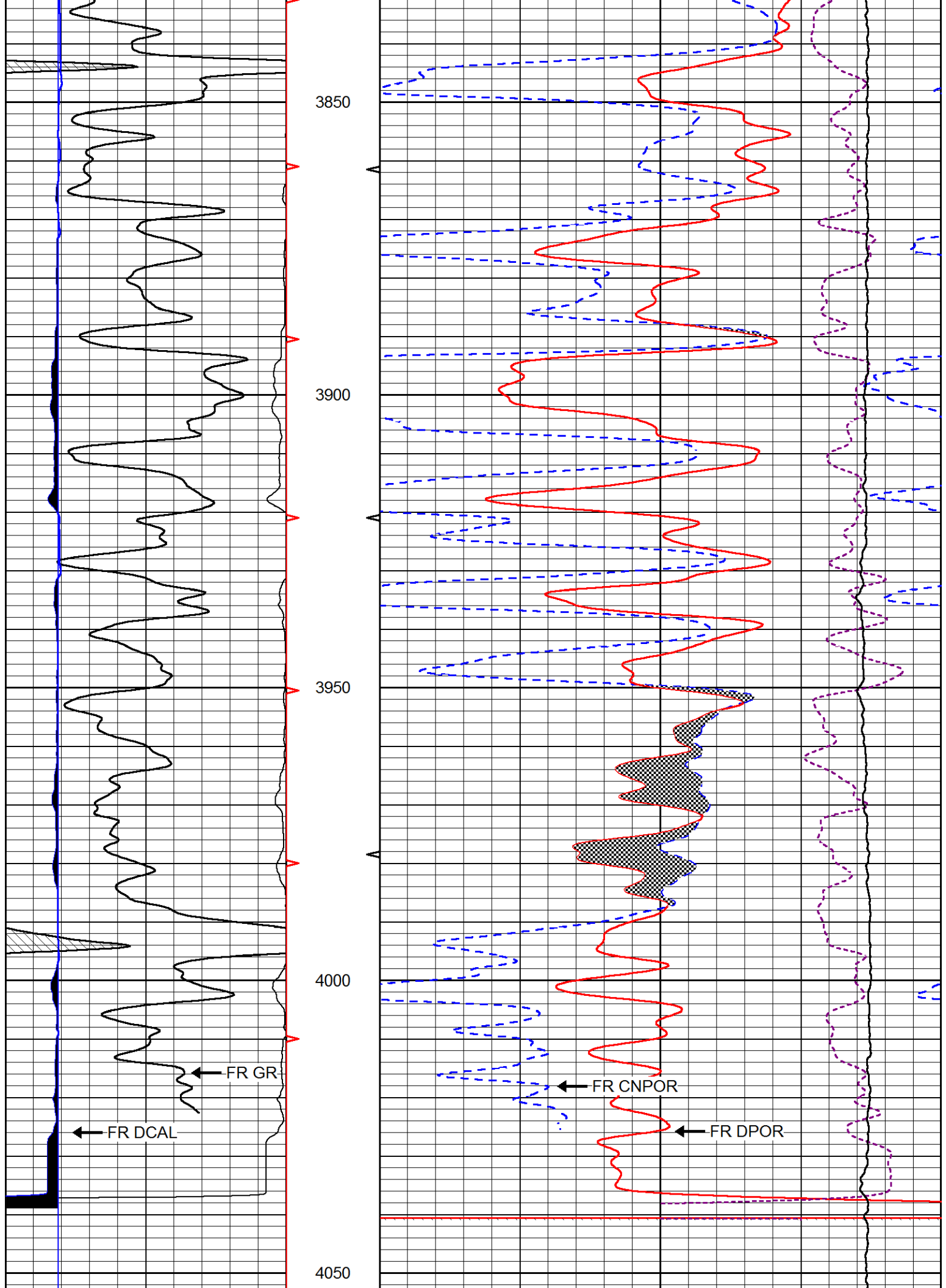
MAIN PASS

Database File new_age_bunker 3.db
 Dataset Pathname stkml/pass4.1
 Presentation Format _CNDLS~1
 Dataset Creation Mon May 03 03:23:50 2021
 Charted by Depth in Feet scaled 1:240









0	GAMMA RAY (GAPI)	150	30	CNPOR (pu)	-10
6	DCAL (in)	16	30	DPOR (pu)	-10
			10000	LINE TENSION (lb)	0
				-0.25 CORRECTION (g/cc)	0.25



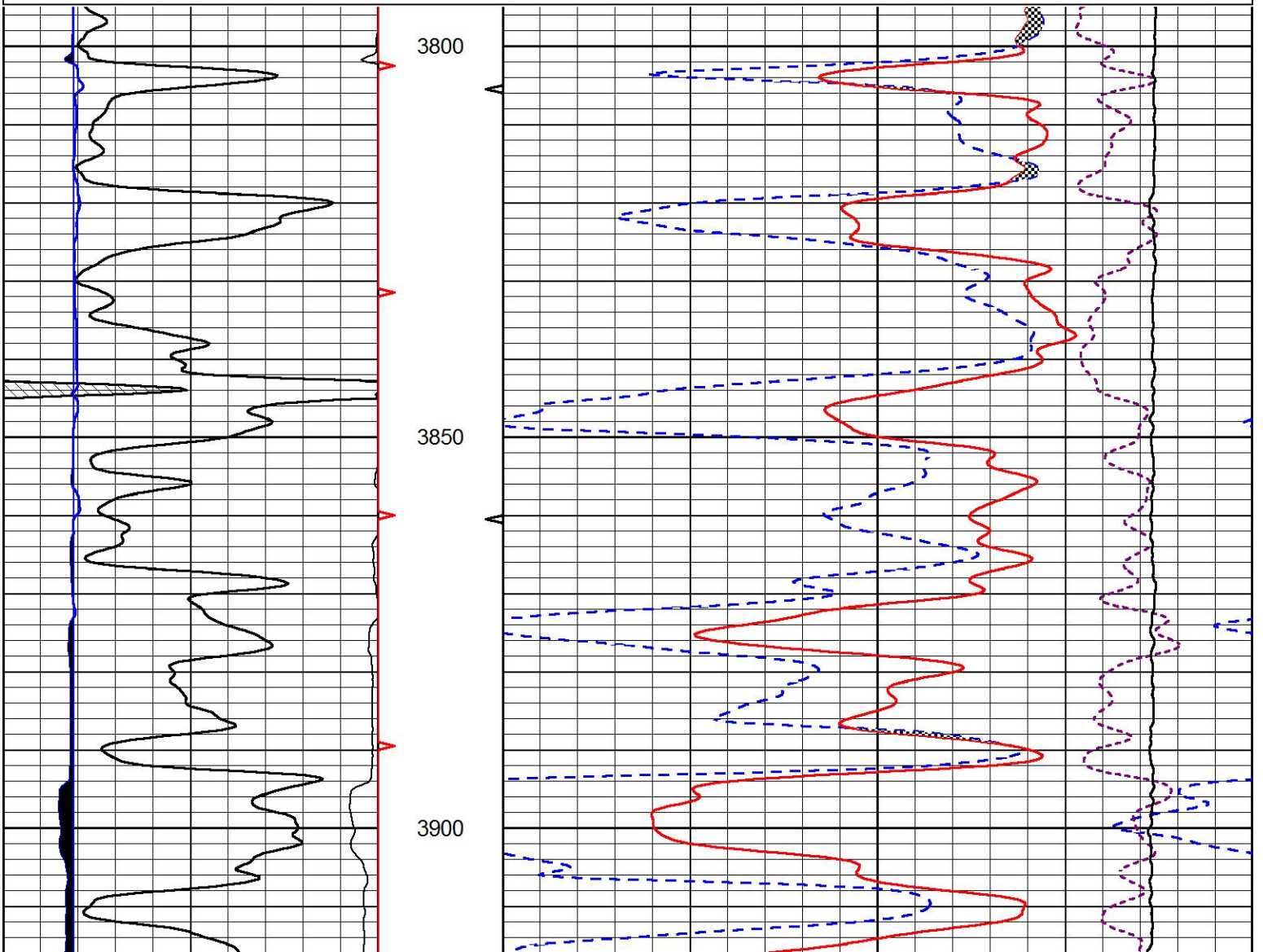
MIDWEST WIRELINE

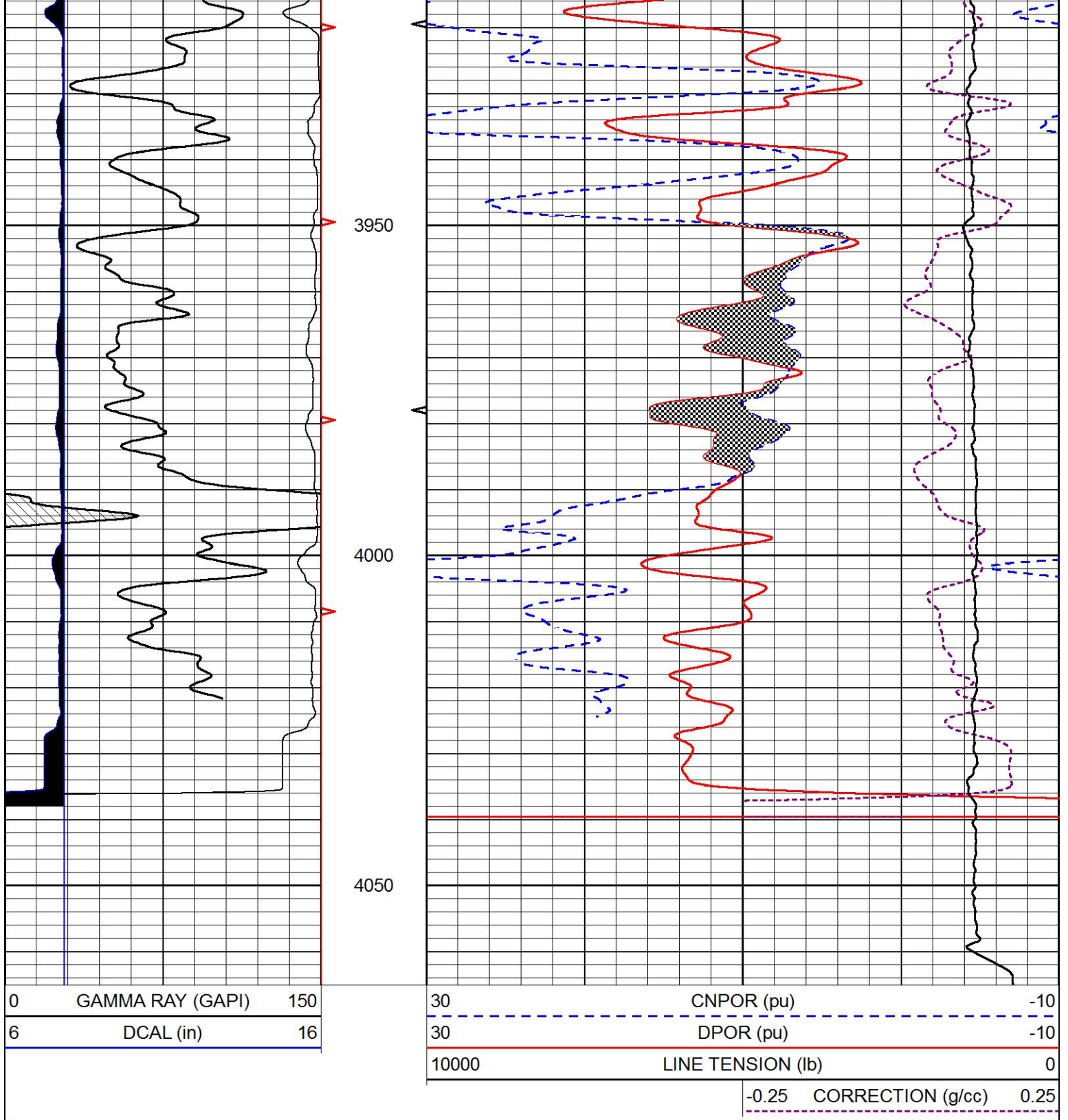
REPEAT SECTION

REPEAT PASS

Database File new age_bunker 3.db
 Dataset Pathname stkml/pass2.1
 Presentation Format _CNDLS~1
 Dataset Creation Mon May 03 03:09:29 2021
 Charted by Depth in Feet scaled 1:240

0	GAMMA RAY (GAPI)	150	30	CNPOR (pu)	-10
6	DCAL (in)	16	30	DPOR (pu)	-10
			10000	LINE TENSION (lb)	0
				-0.25 CORRECTION (g/cc)	0.25





Company	New Age Oil, LLC
Well	Bunker #3
Field	Unnamed
County	Trego
State	Kansas