



MIDWEST WIRELINE

# DUAL INDUCTION LOG

Company **New Age Oil, LLC**  
 Well **Bunker #3**  
 Field **Unnamed**  
 County **Trego** State **Kansas**

Company **New Age Oil, LLC**  
 Well **Bunker #3**  
 Field **Unnamed**  
 County **Trego**  
 State **Kansas**

Location: **API #: 15-195-23117-00-00**  
**SE - NW - NW - SE**  
**2200' FSL & 2200' FEL**  
**SEC 24 TWP 12S RGE 22W**  
 Permanent Datum **Ground Level** Elevation **2339'**  
 Log Measured From **Kelly Bushing**  
 Drilling Measured From **Kelly Bushing**  
 Other Services **CNL/CDL MEL**  
 Elevation **2347'**  
 K.B. **N/A**  
 D.F. **2339'**  
 G.L.

Date	5/3/2021
Run Number	One
Depth Driller	4060'
Depth Logger	4060'
Bottom Logged Interval	4059'
Top Log Interval	200'
Casing Driller	8.625' @ 221'
Casing Logger	221'
Bit Size	7.875"
Type Fluid in Hole	Chemical
Salinity, ppm CL	4000
Density / Viscosity	9.1 53
pH / Fluid Loss	10.0 9.2
Source of Sample	FLOWLINE
Rm @ Meas. Temp	0.80 @ 60
Rmt @ Meas. Temp	0.60 @ 60
Rmc @ Meas. Temp	1.08 @ 60
Source of Rmf / Rmc	CHARTS
Rm @ BHT	0.41 @ 117
Operating Rig Time	3 Hours
Max Rec. Temp. F	117
Equipment Number	P-24
Location	HAYS
Recorded By	D. Schmidt
Witnessed By	Logan Behr

<<< Fold Here >>>

All interpretations are opinions based on inferences from electrical or other measurements and Midwest Wireline LLC cannot and does not guarantee the accuracy or correctness of any interpretation, and Midwest Wireline LLC will not be liable or responsible for any loss, costs, damages, or expenses incurred or sustained by anyone resulting from any interpretation made by any of our officers, agents or employees.

Comments

N/A DENOTES NOT AVAILABLE OR NON-APPLICABLE.

I-70 & Ogallah,  
 North to Old 40, East to 340th Ave, 1 North,  
 East into

Log Measured From: Kelly Bushing 8 Ft. Above Permanent Datum

THANK YOU FOR USING MIDWEST WIRELINE LLC  
 785-625-3858

Your Midwest Wireline Crew

Engineer: D. Schmidt  
 Operator:  
 Operator:  
 Operator:

This Log Record Was Witnessed By

Primary Witness: Logan Behr  
 Secondary Witness:  
 Secondary Witness:  
 Secondary Witness:

Sensor	Offset (ft)	Schematic	Description	Length (ft)	O.D. (in)	Weight (lb)
GR	44.50		GR-M&W (233-M&W)	3.00	3.50	50.00
CNLSC CNSSC	41.40 40.65		CNT-M&W (207-MW)	5.50	3.50	100.00
LSD DCAL SSD	32.35 32.33 31.85		CDL-M&W (817-947)	8.50	4.00	250.00
MCAL MI MN	20.87 20.87 20.87		ML-PSI UDM ML (UDM-01) Stackable Microlog Tools	11.50	4.00	215.00
RLL3F RLL3	15.80 15.80					
CILD	8.00		DIL-PSI HIGH TEMP (952-828)	18.50	3.50	220.00
CILM	4.70					
SP	0.20					

Dataset: new age\_bunker 3.db: field/well/stkml/pass4.1  
 Total length: 47.00 ft  
 Total weight: 835.00 lb  
 O.D.: 4.00 in

# Log Variables

DatabaseC:\ProgramData\Warrior\Data\new age\_bunker 3.db  
 Dataset field/well/stkml/pass4.1/\_vars\_

## Top - Bottom

A	BOREID in	BOTTEMP degF	CASEOD in	CASETHCK in	FLUIDDEN g/cc	M	MATRXDEN g/cc
1	7.875	117	5.5	0	1	2	2.71
NPORSEL	PERFS	SNDERR mmho/m	SNDERRM mmho/m	SPSHIFT mV	SRFTEMP degF	SZCOR	TDEPTH ft
Limestone	No	0	0	320	60	Off	4060

## Variable Description

A : Cement Factor (a)  
 BOREID : Borehole I.D.  
 BOTTEMP : Bottom Hole Temperature  
 CASEOD : Casing O.D.  
 CASETHCK : Casing Thickness  
 FLUIDDEN : Fluid Density  
 M : Cement Exp (m)  
 MATRXDEN : Matrix Density

NPORSEL : Neutron Porosity Curve Select  
 PERFS : Perforation Flag  
 SNDERR : Deep Sonde Error Correction  
 SNDERRM : Medium Sonde Error Correction  
 SPSHIFT : S.P. Baseline Offset  
 SRFTEMP : Surface Temperature  
 SZCOR : CN Size Cor. ?  
 TDEPTH : Total Depth

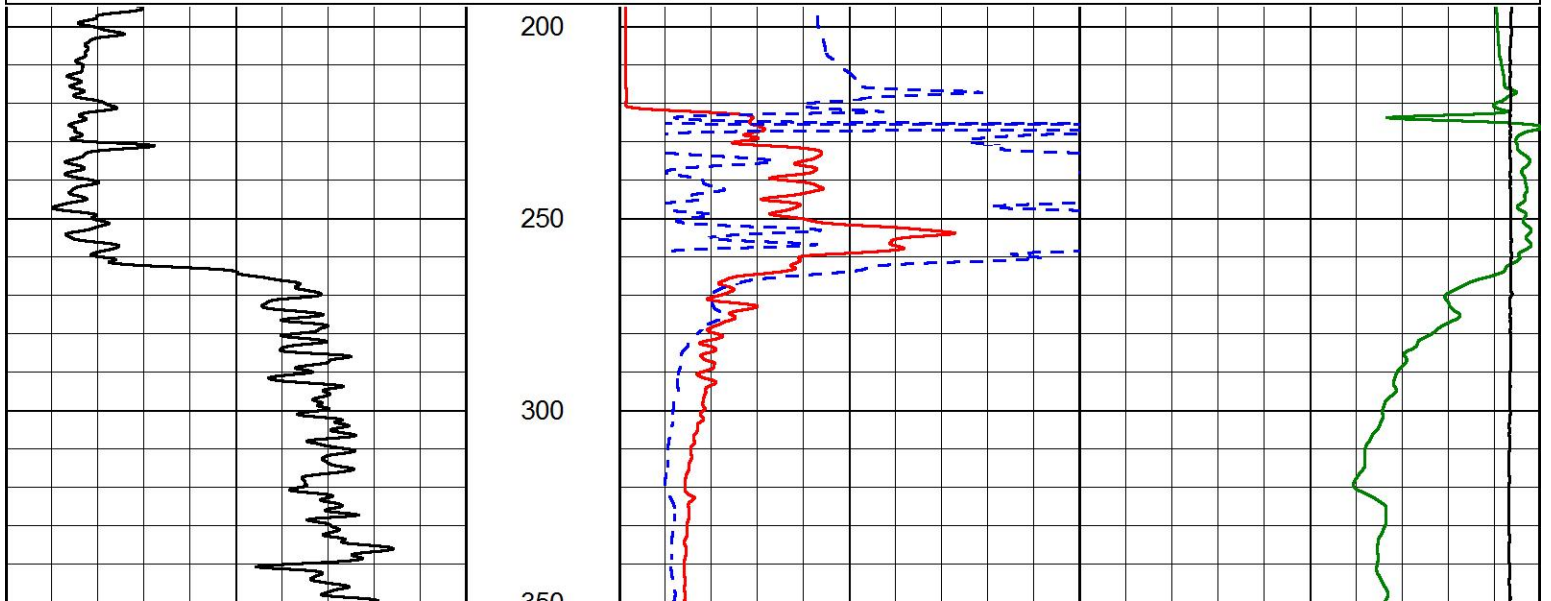


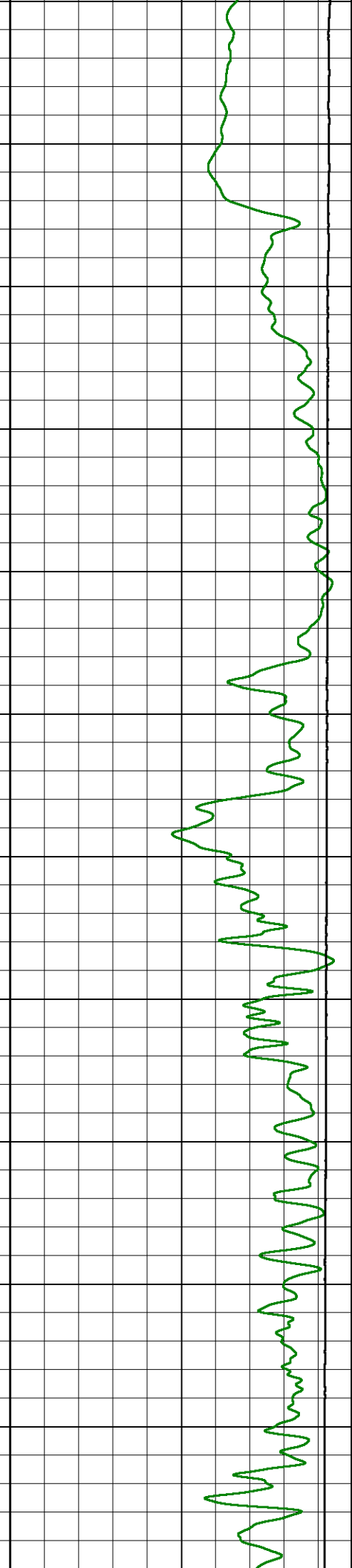
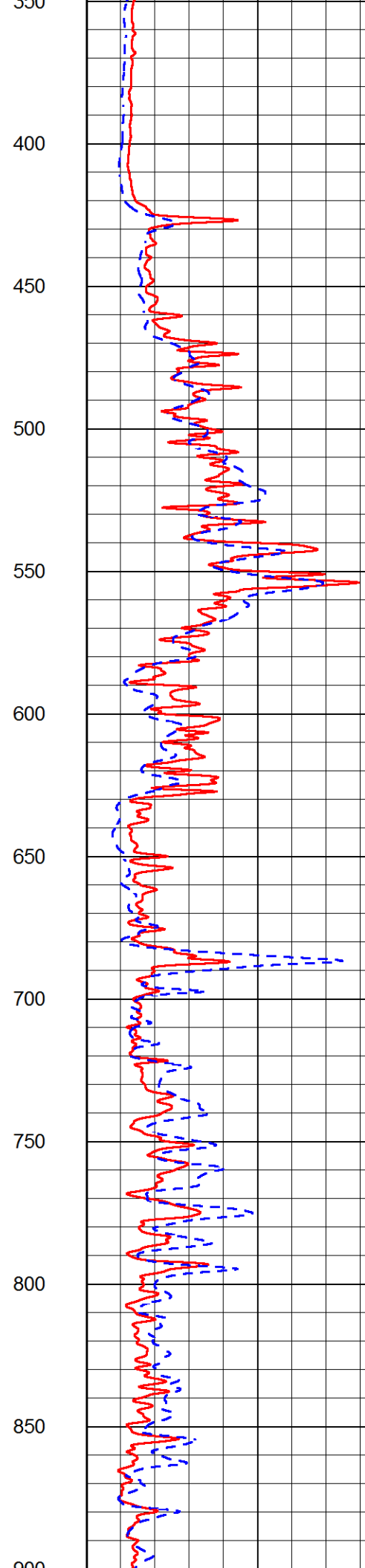
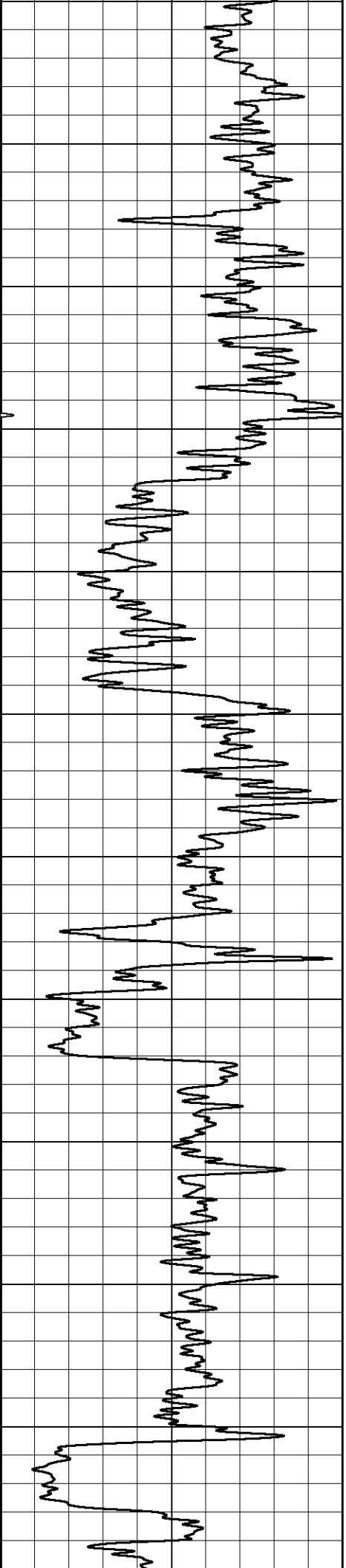
## 2" SCALE RESISTIVITY

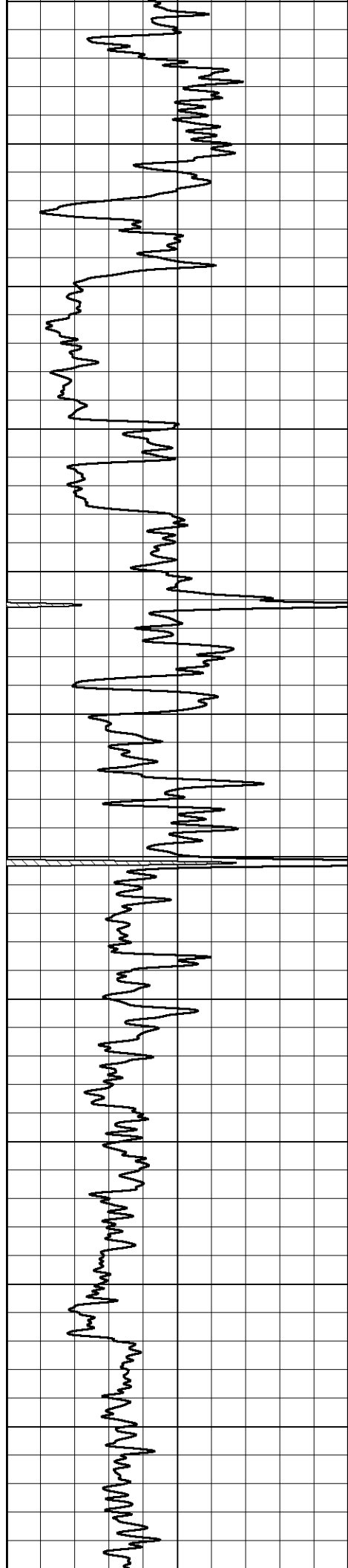
### MAIN PASS

Database File new age\_bunker 3.db  
 Dataset Pathname stkml/pass3.1  
 Presentation Format \_dil2in  
 Dataset Creation Mon May 03 03:56:16 2021  
 Charted by Depth in Feet scaled 1:600

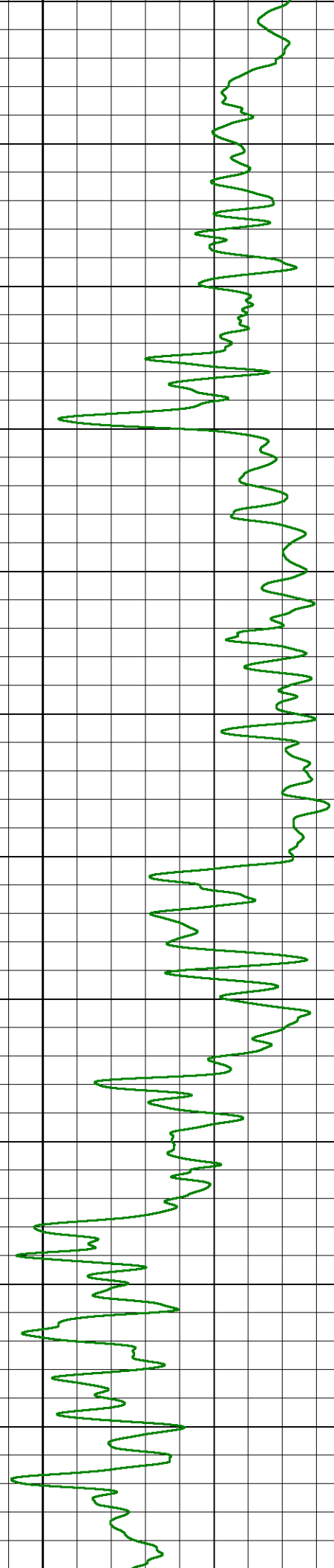
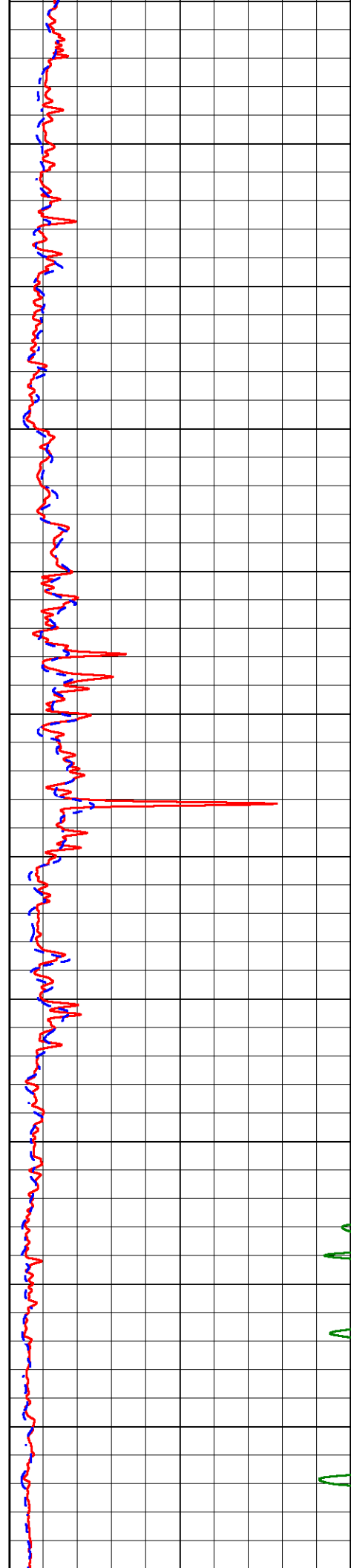
GAMMA RAY (GAPI)	1000	CONDUCTIVITY (mmho/m)	0
	15000	Line Tension (lb)	0
	0	RLL3 (Ohm-m)	50
	0	RILD (Ohm-m)	50
	50	RLL3 (Ohm-m)	200
	50	Deep Resistivity (Ohm-m)	200

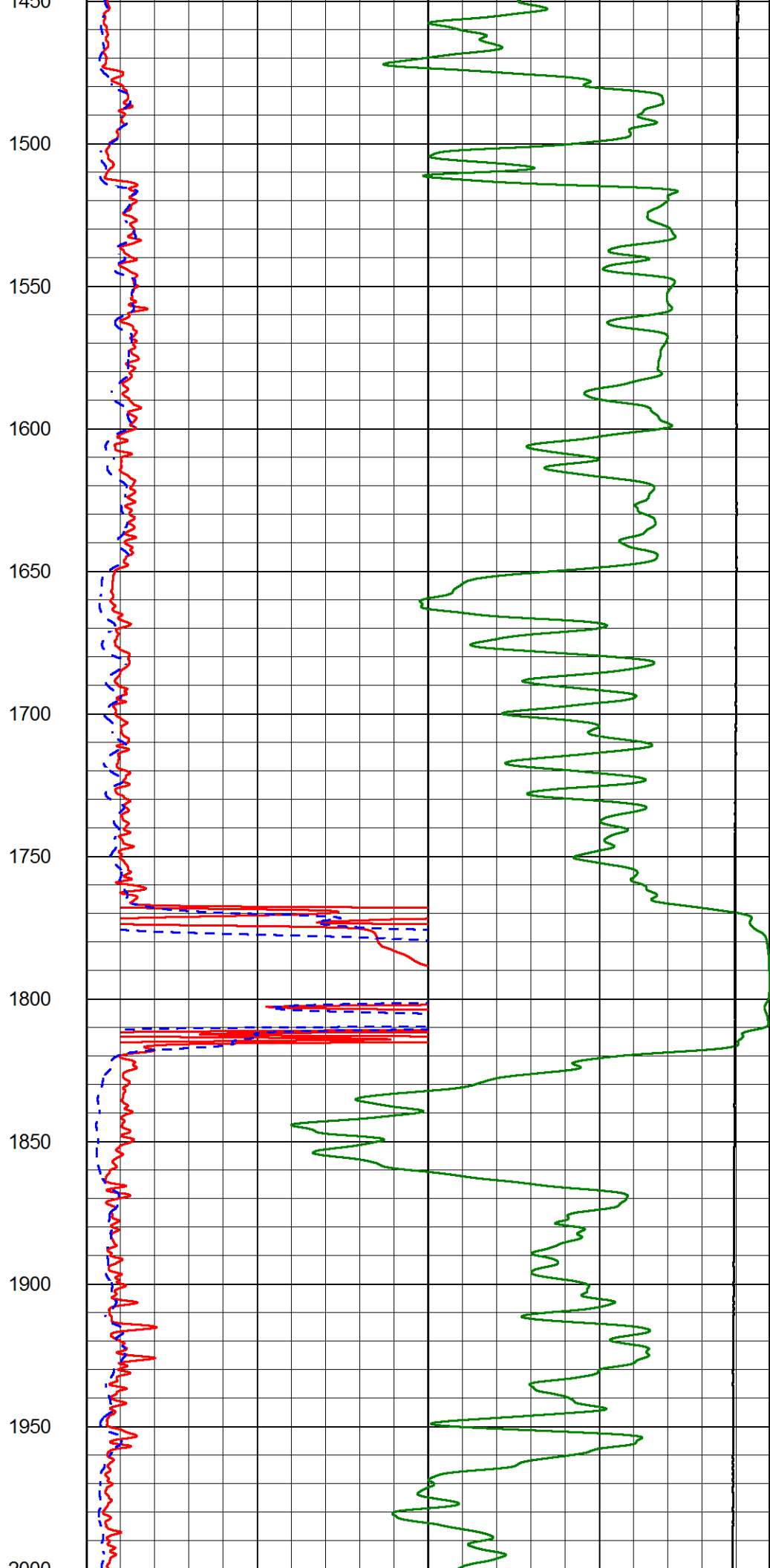
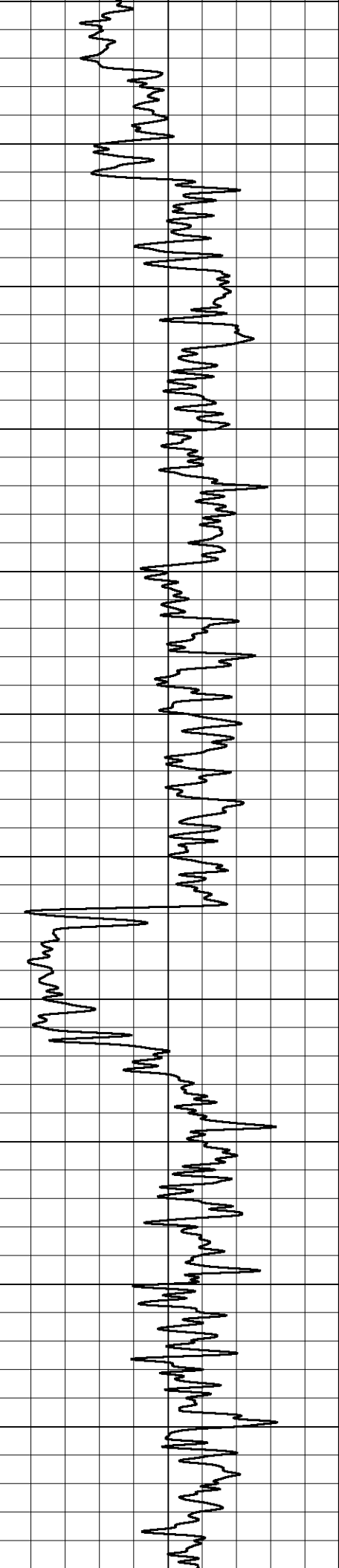


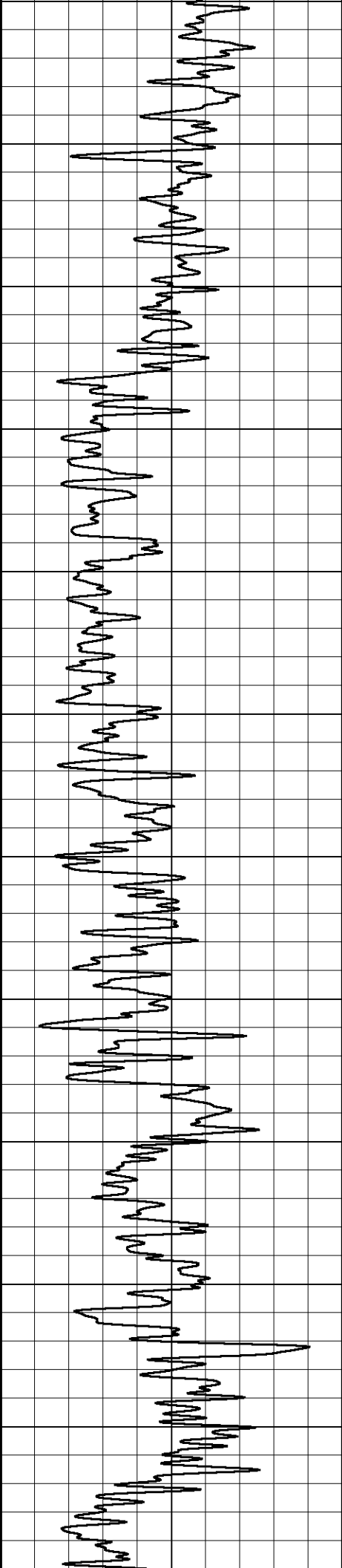




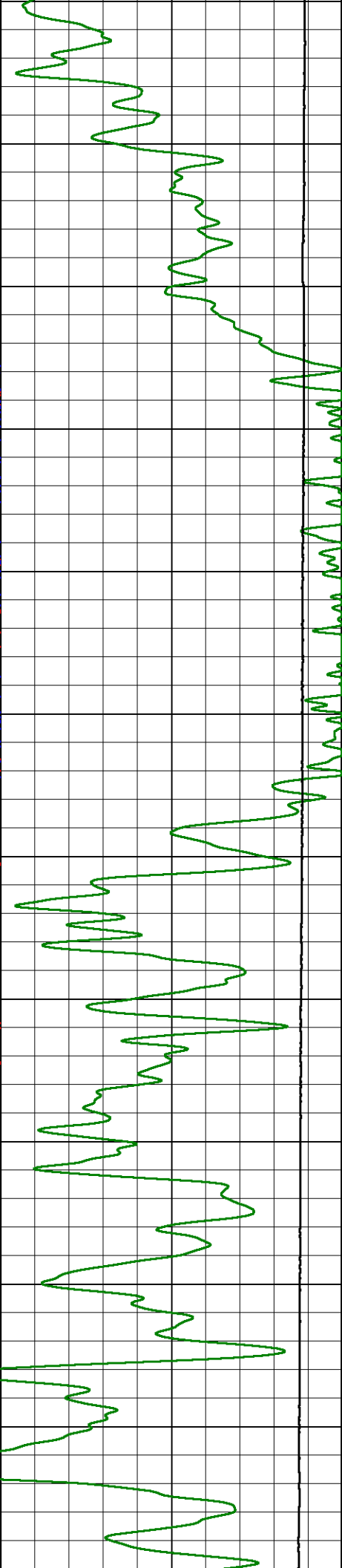
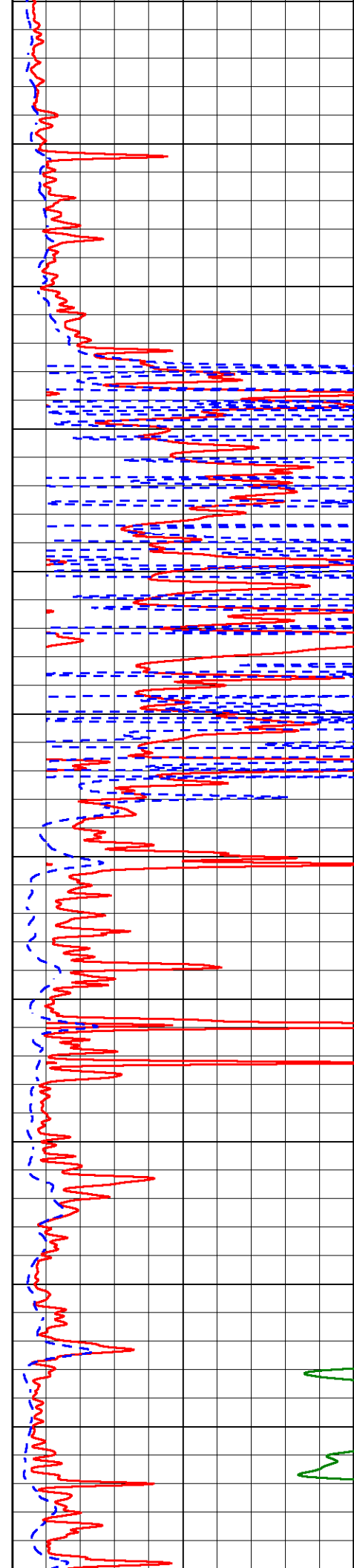
900  
950  
1000  
1050  
1100  
1150  
1200  
1250  
1300  
1350  
1400  
1450

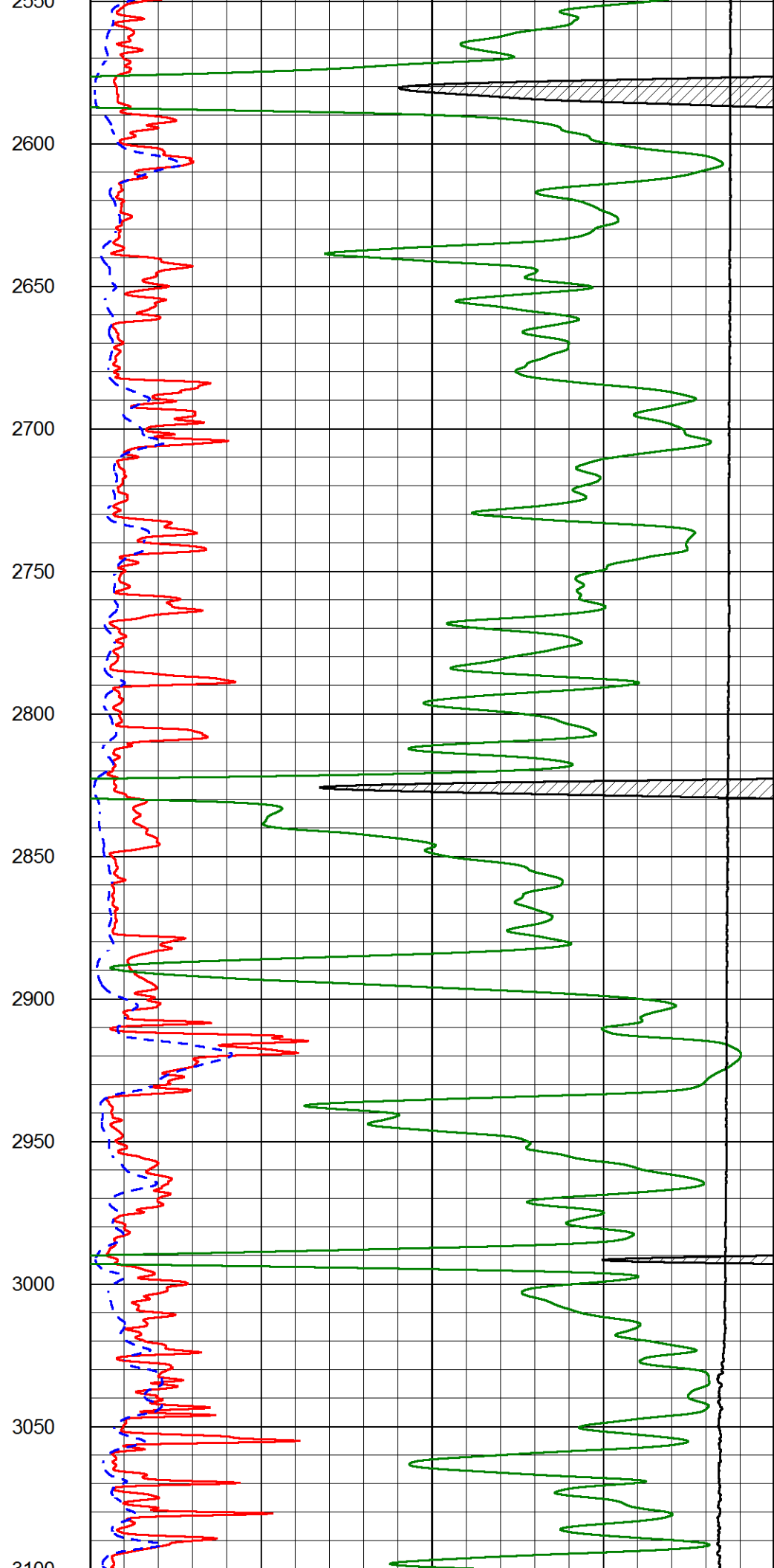
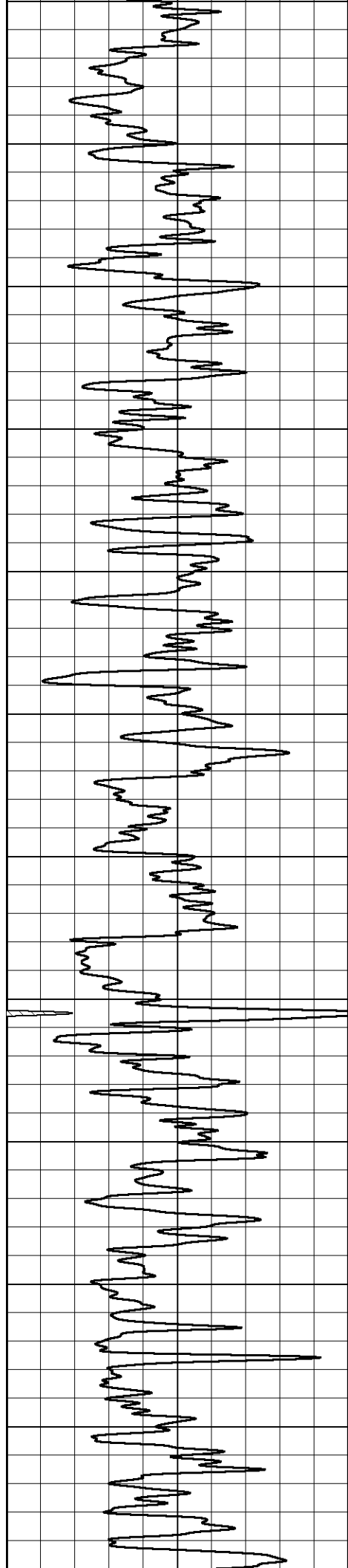


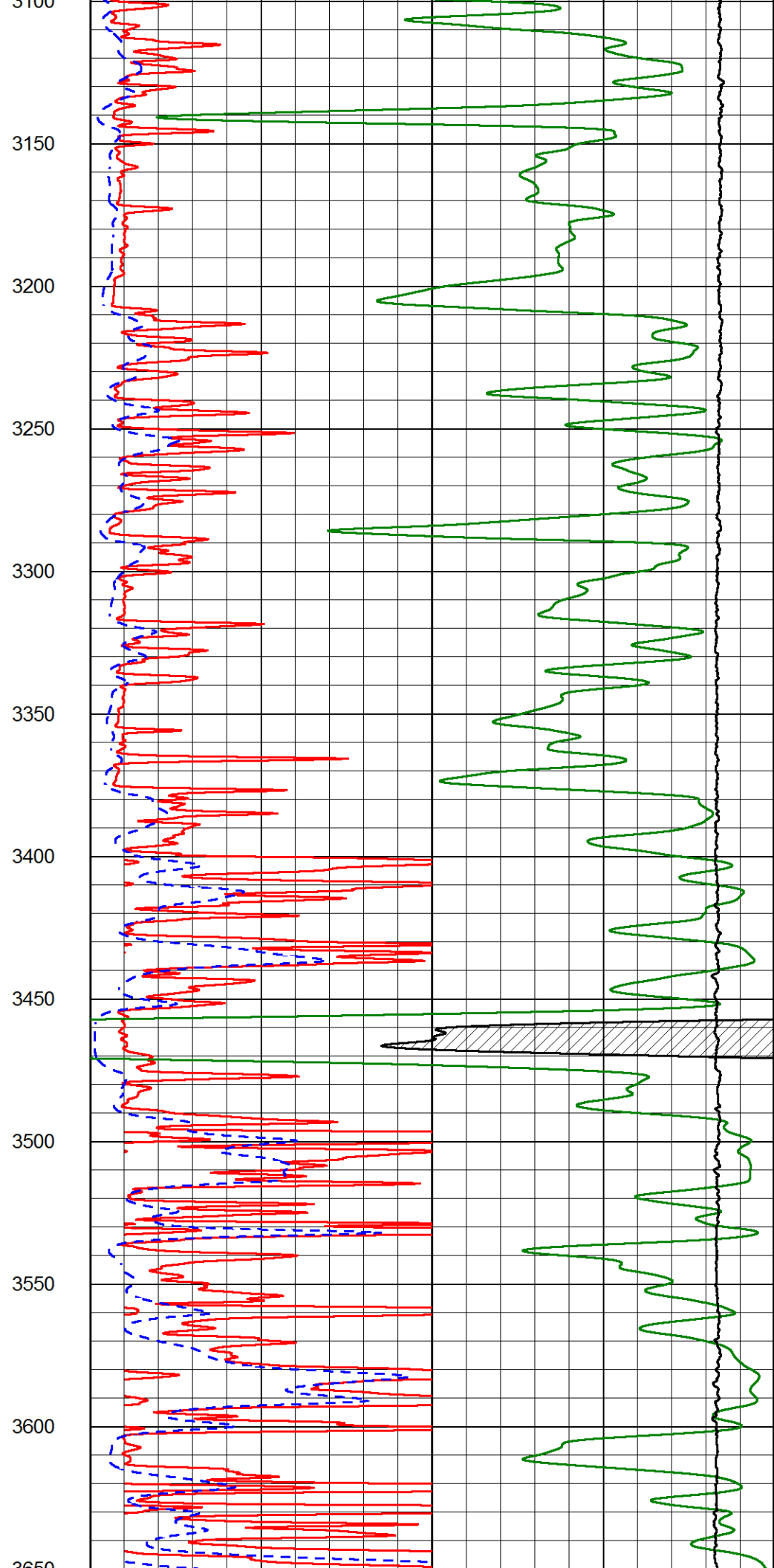
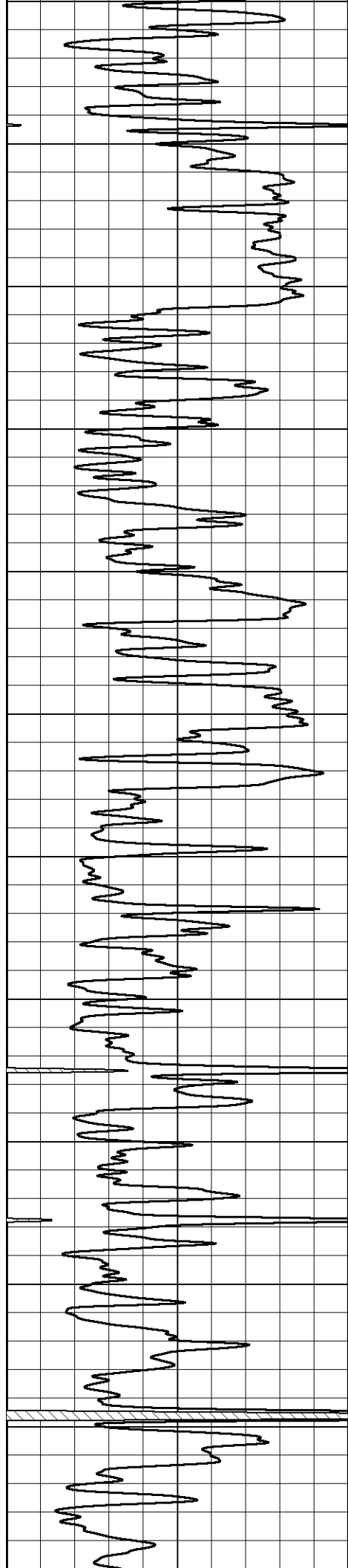


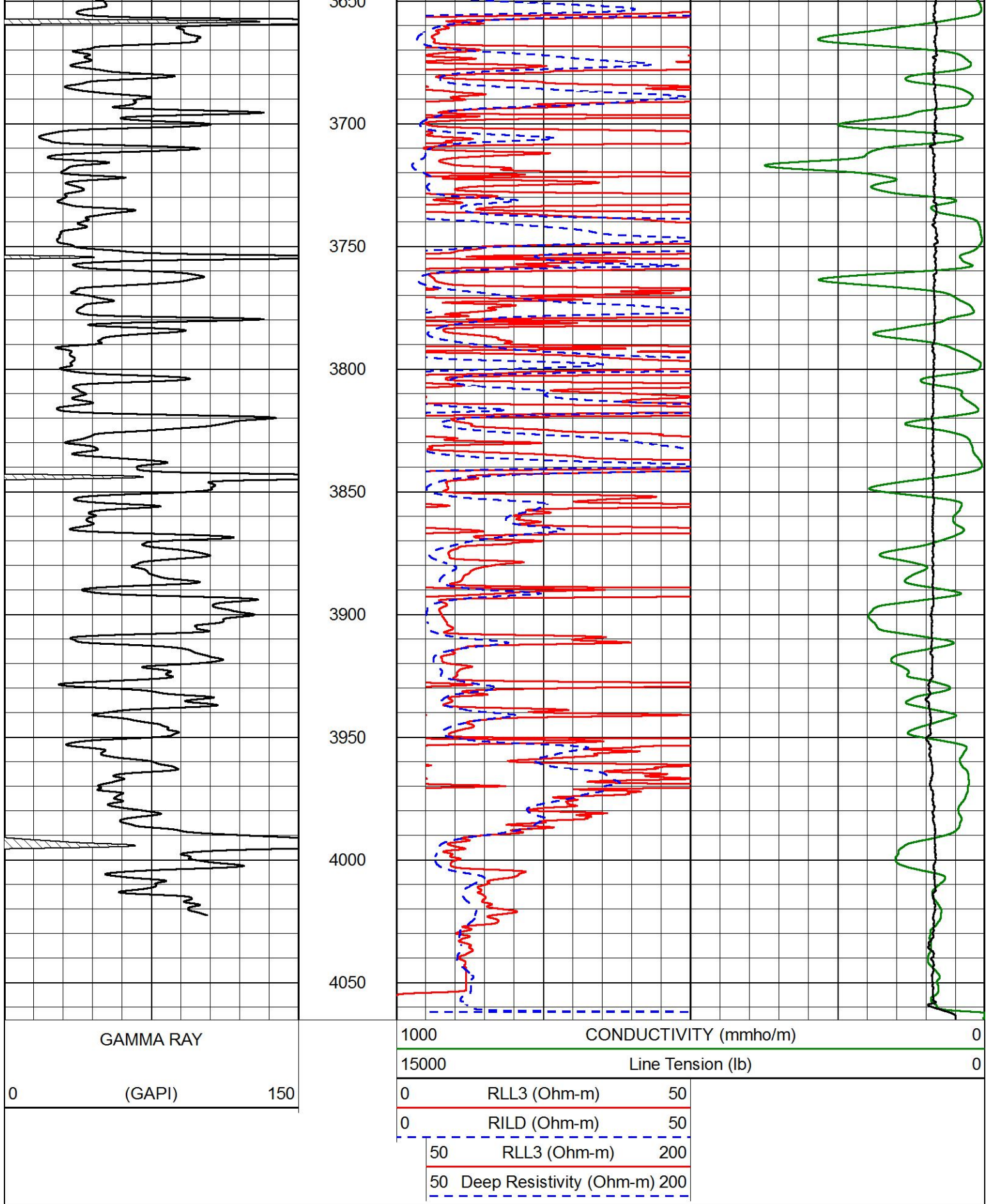


2000  
2050  
2100  
2150  
2200  
2250  
2300  
2350  
2400  
2450  
2500  
2550









# ANHYDRITE SECTION

MAIN PASS

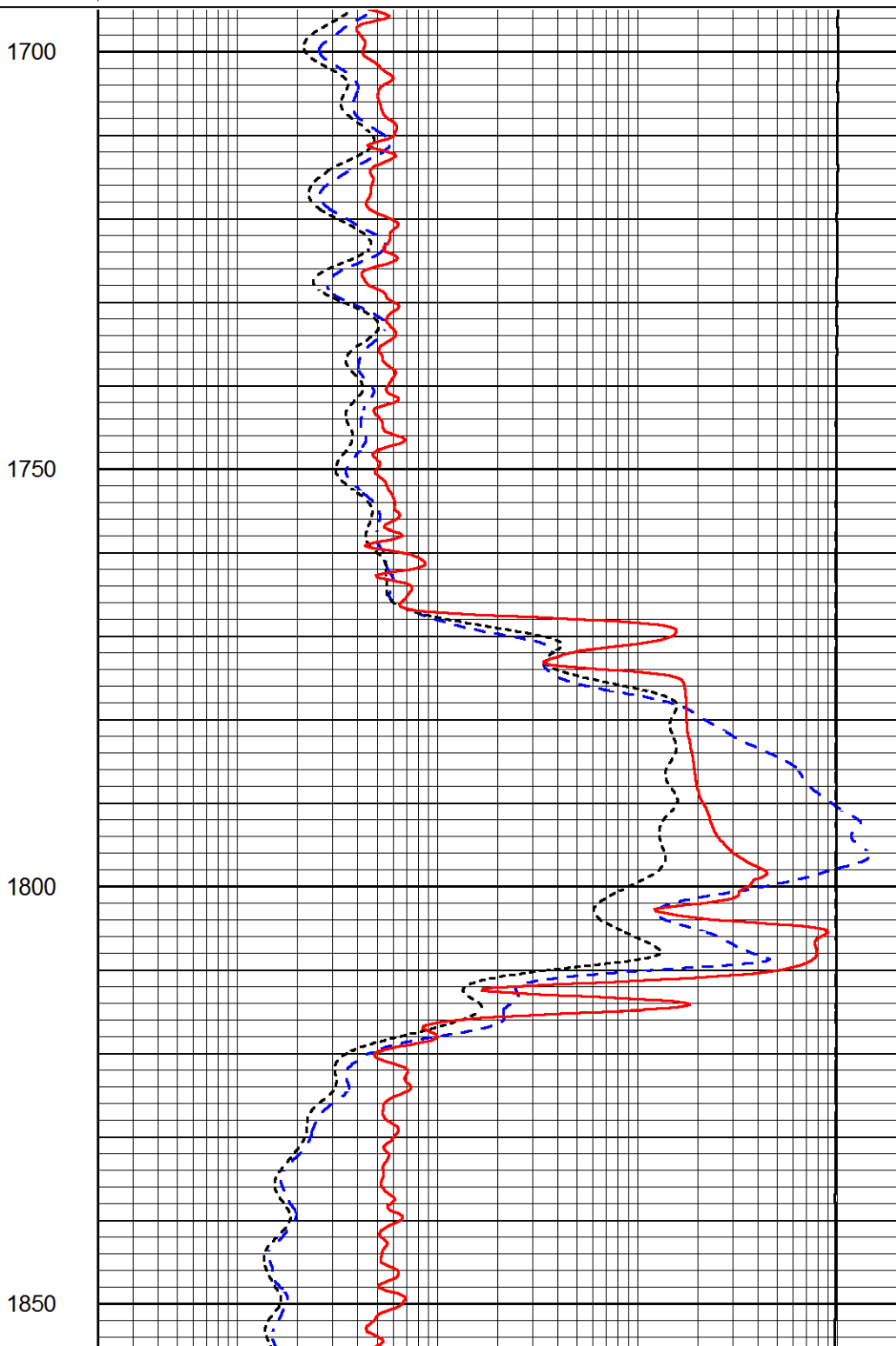
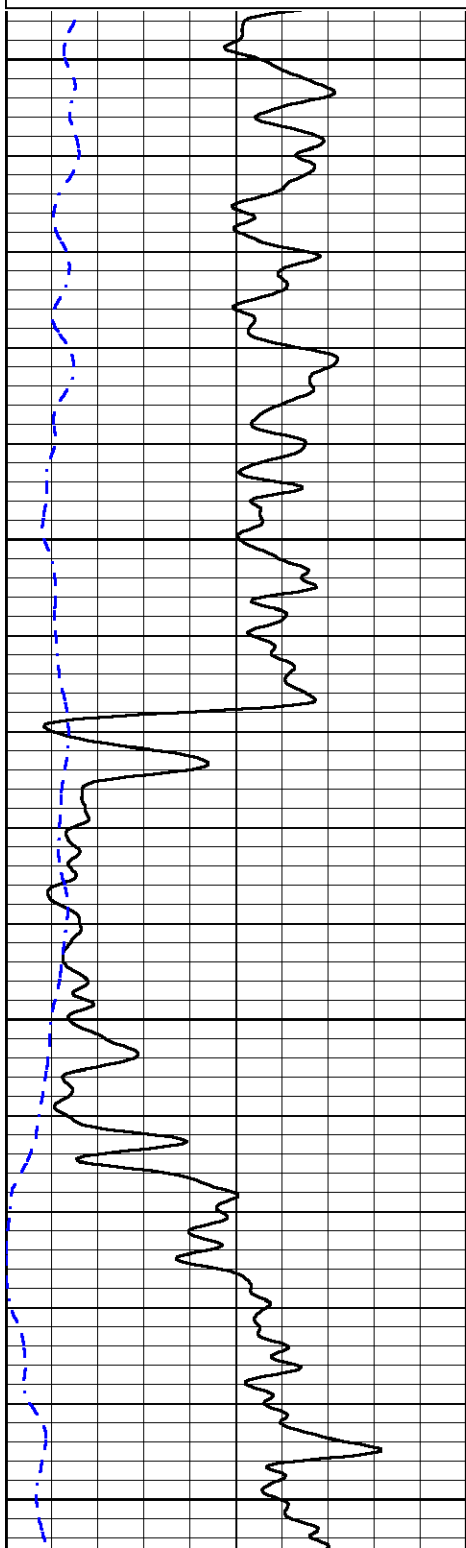


MIDWEST WIRELINE

Database File new\_age\_bunker 3.db  
 Dataset Pathname stkml/pass6.1  
 Presentation Format \_dil  
 Dataset Creation Mon May 03 03:56:05 2021  
 Charted by Depth in Feet scaled 1:240

0 GAMMA RAY (GAPI) 150  
 -200 SP (mV) 0

0.2 DEEP RESISTIVITY (Ohm-m) 2000  
 0.2 MEDIUM RESISTIVITY (Ohm-m) 2000  
 0.2 RLL3 (Ohm-m) 2000  
 10000 LINE TENSION (lb) 0



0 GAMMA RAY (GAPI) 150  
 -200 SP (mV) 0

0.2 DEEP RESISTIVITY (Ohm-m) 2000  
 0.2 MEDIUM RESISTIVITY (Ohm-m) 2000  
 0.2 RLL3 (Ohm-m) 2000  
 10000 LINE TENSION (lb) 0



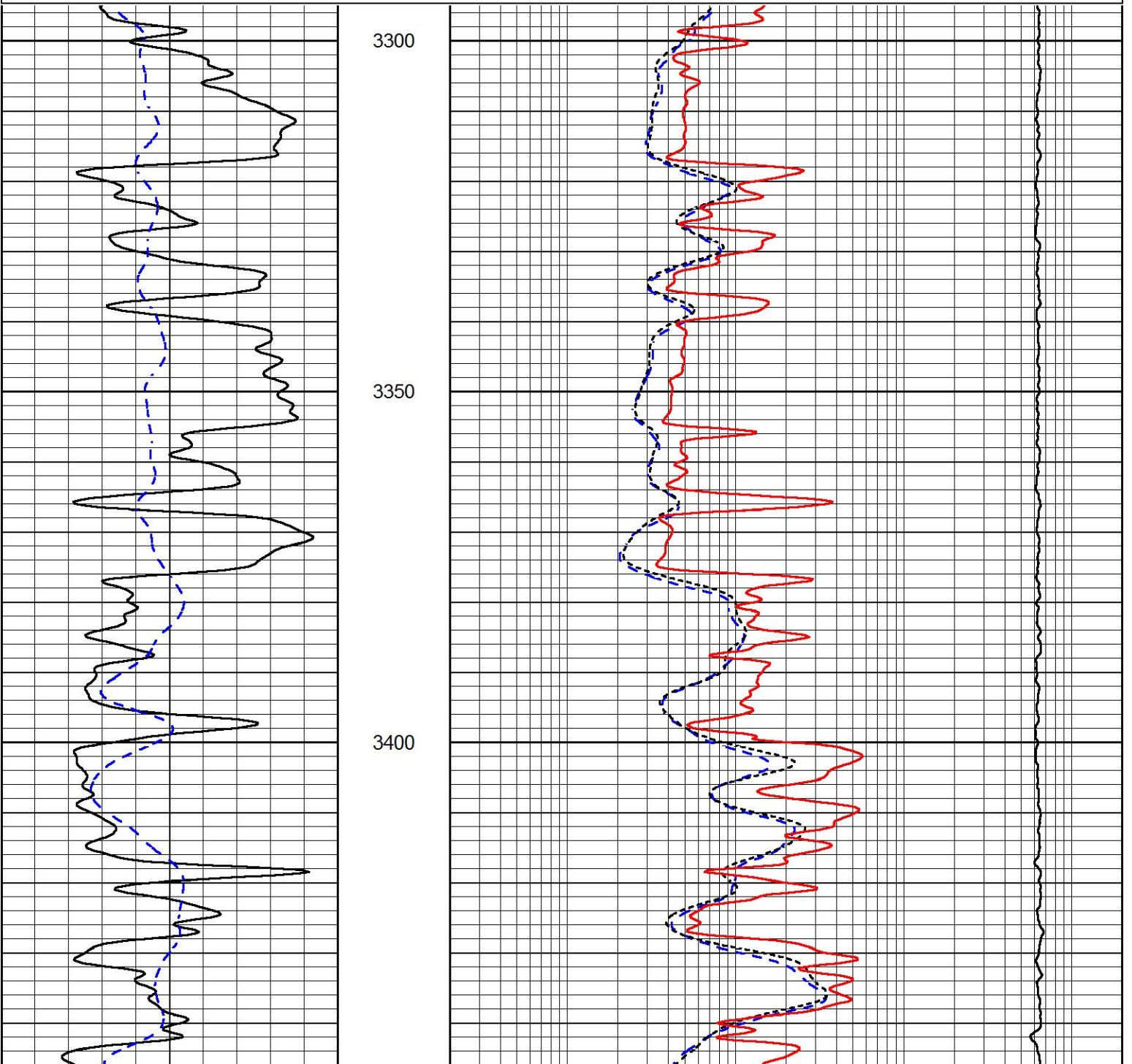
# DETAIL SECTION

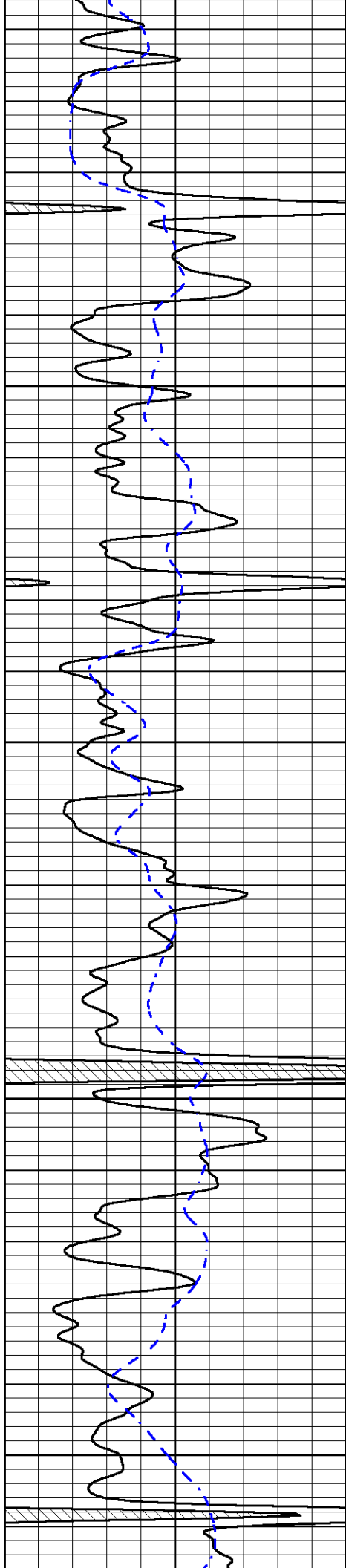
## MAIN PASS

Database File new age\_bunker 3.db  
 Dataset Pathname stkml/pass4.1  
 Presentation Format \_dil  
 Dataset Creation Mon May 03 03:23:50 2021  
 Charted by Depth in Feet scaled 1:240

0	GAMMA RAY (GAPI)	150
-200	SP (mV)	0

0.2	DEEP RESISTIVITY (Ohm-m)	2000
0.2	MEDIUM RESISTIVITY (Ohm-m)	2000
0.2	RLL3 (Ohm-m)	2000
10000	LINE TENSION (lb)	0





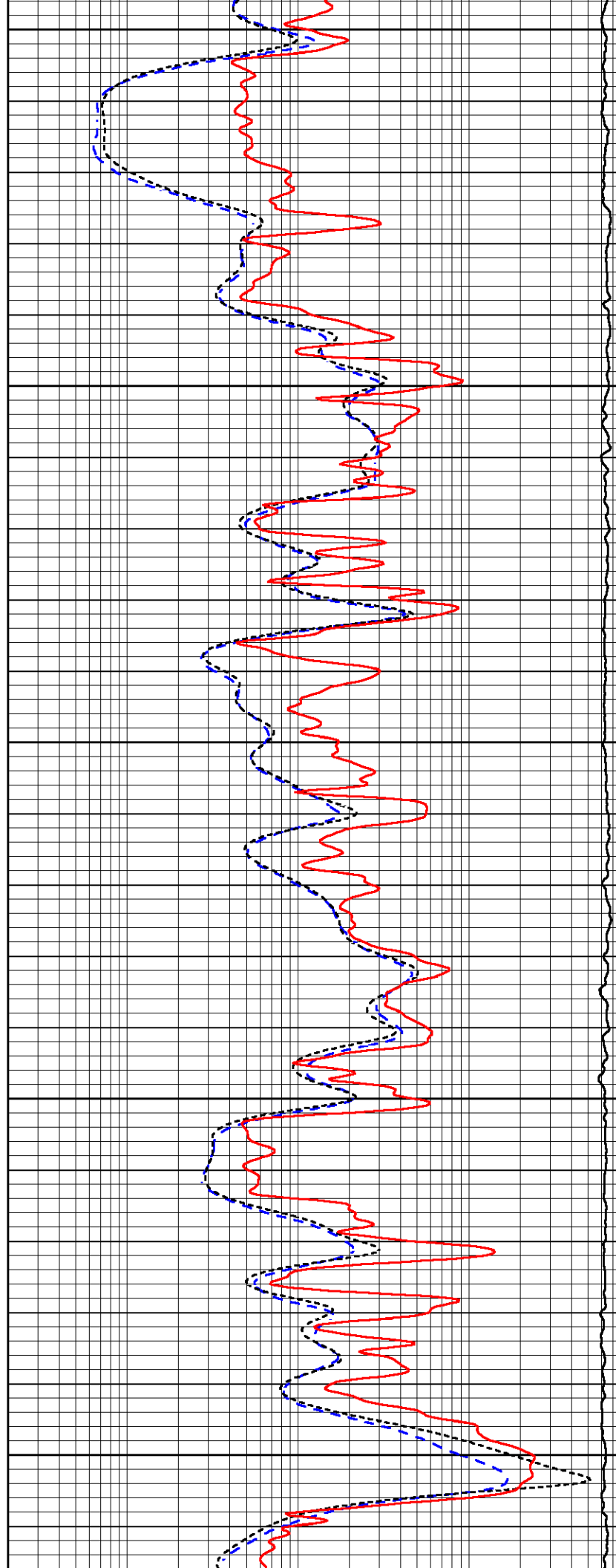
3450

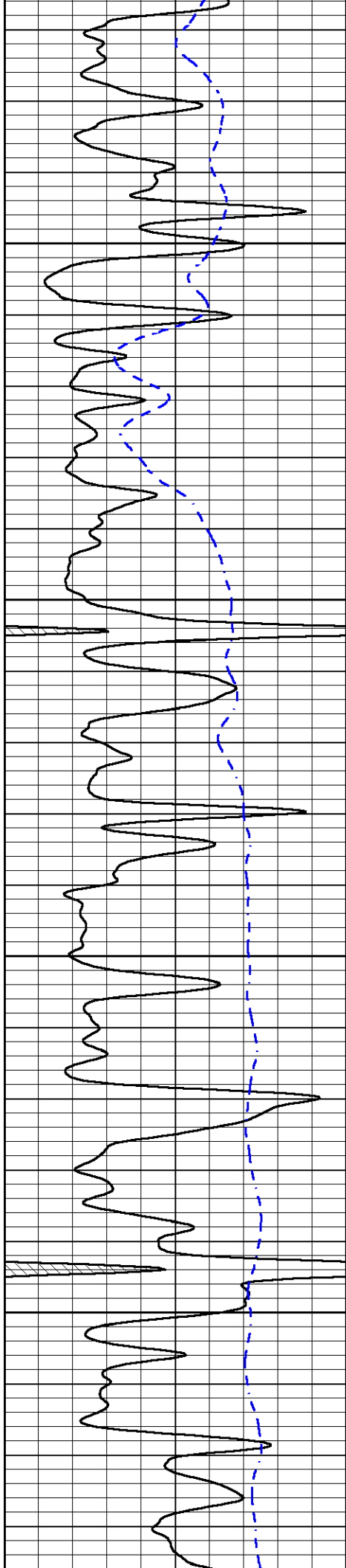
3500

3550

3600

3650



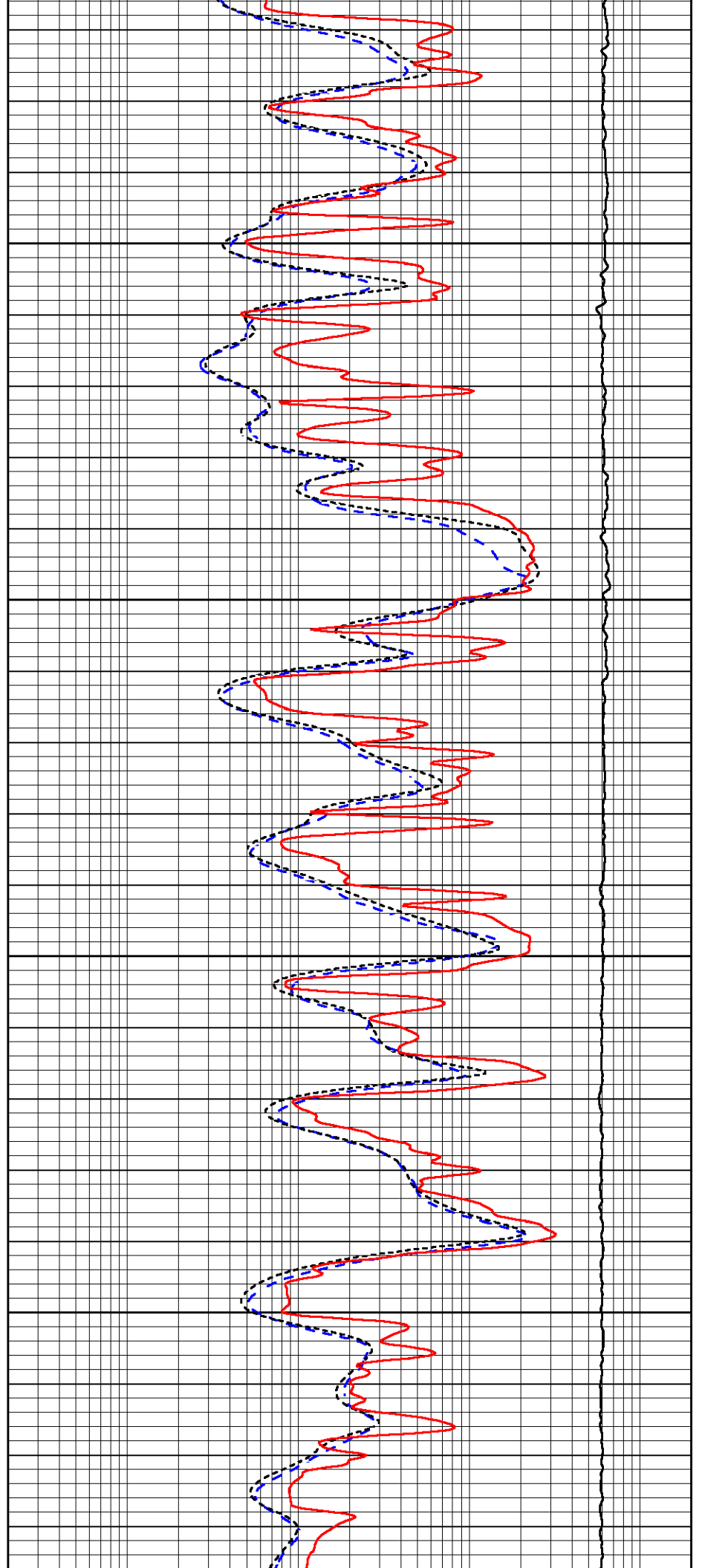


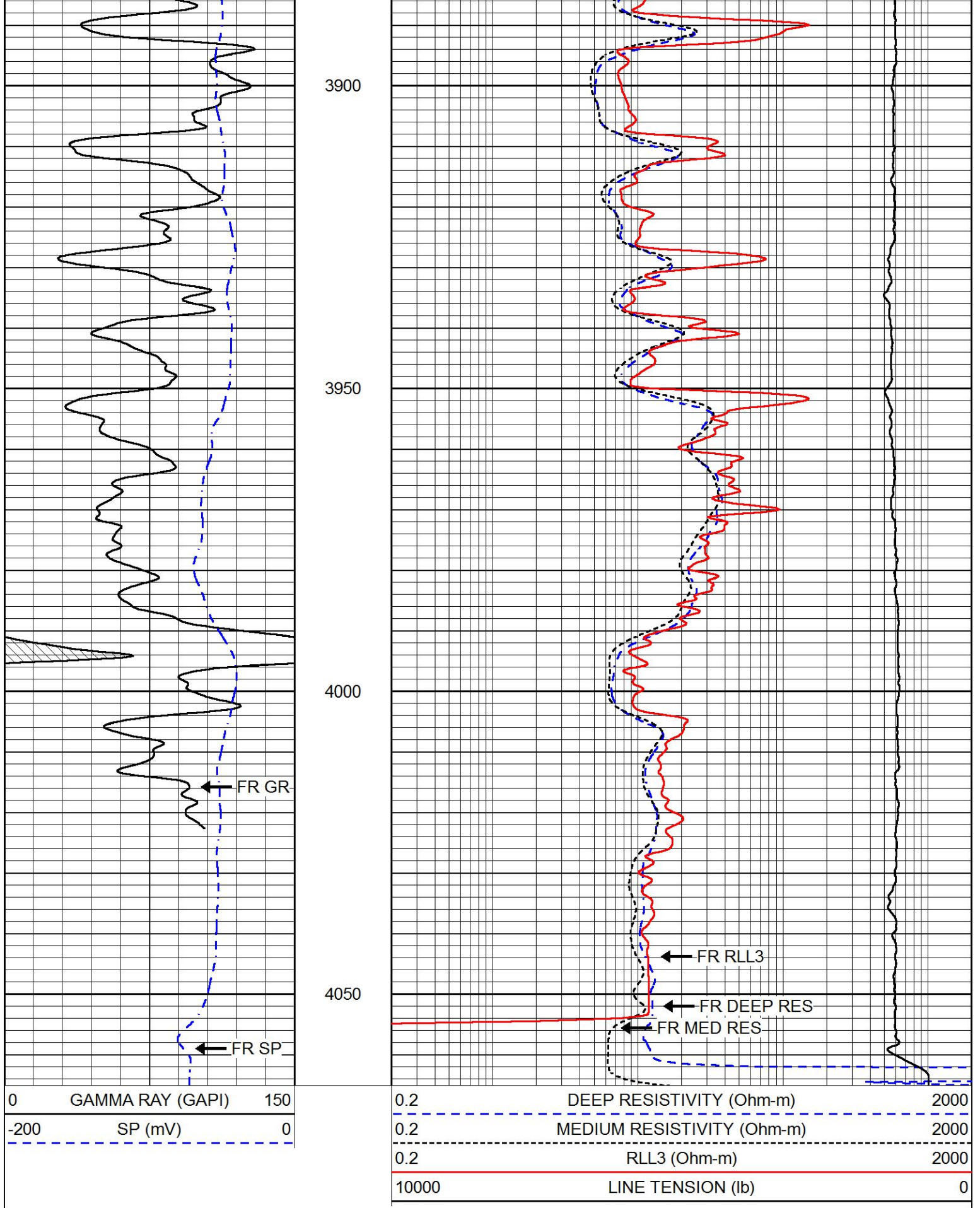
3700

3750

3800

3850





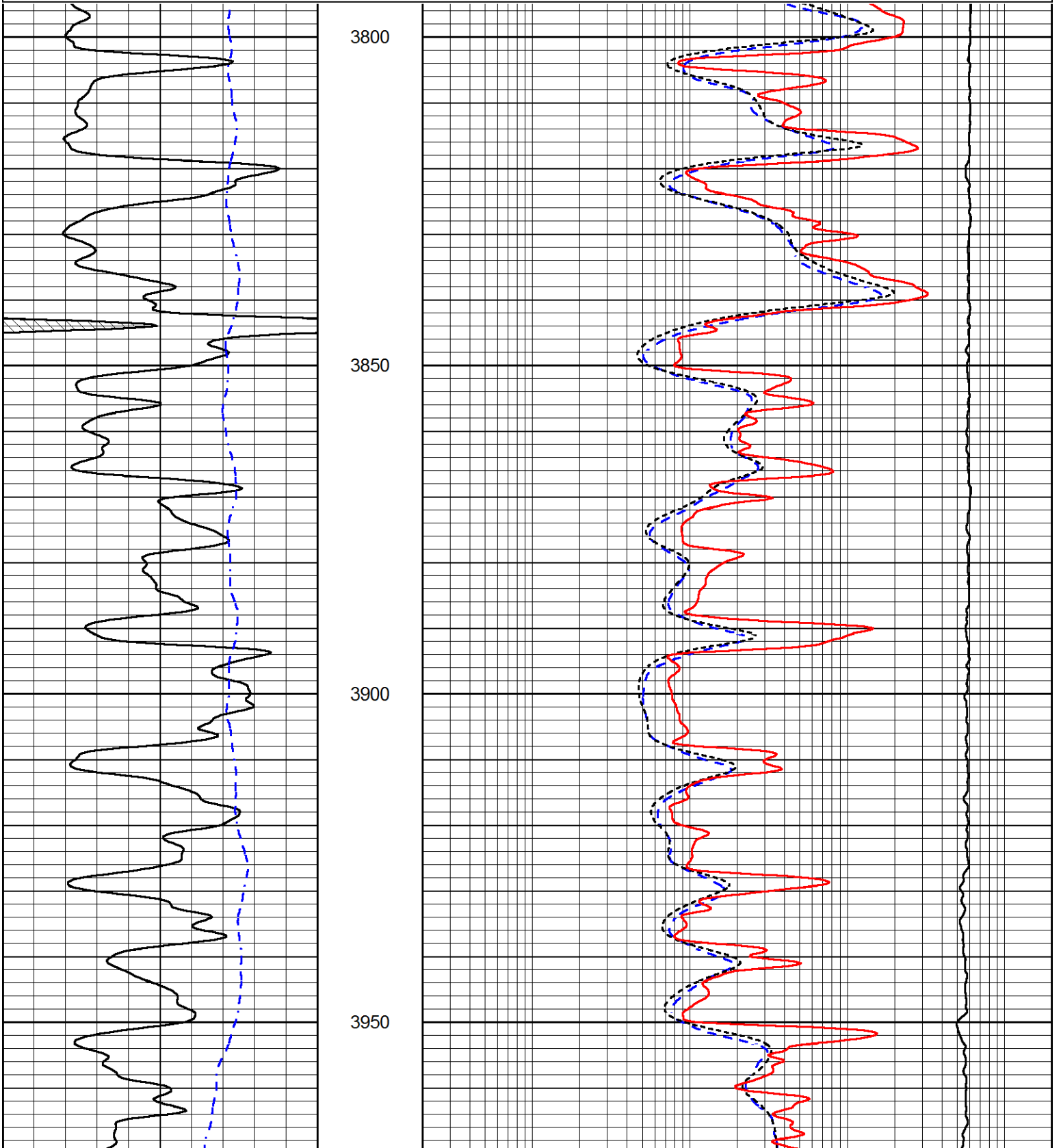
# REPEAT SECTION

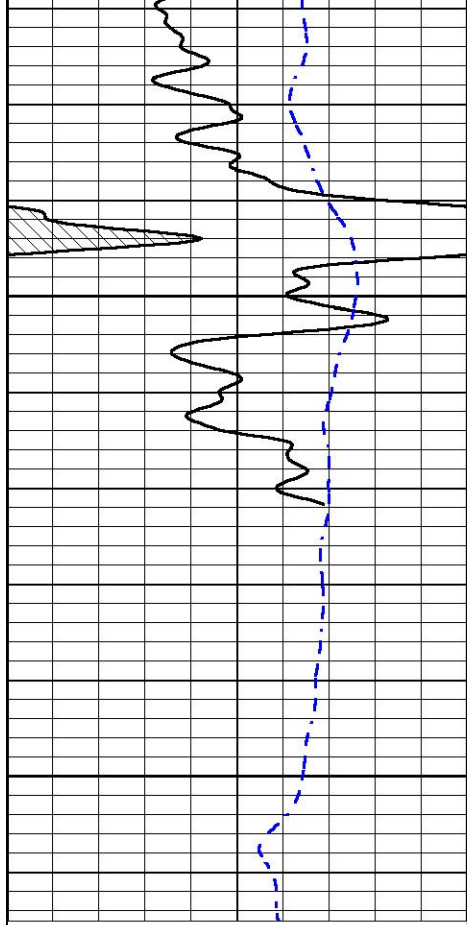
REPEAT PASS

Database File new\_age\_bunker 3.db  
 Dataset Pathname stkml/pass2.1  
 Presentation Format \_dil  
 Dataset Creation Mon May 03 03:09:29 2021  
 Charted by Depth in Feet scaled 1:240

0	GAMMA RAY (GAPI)	150
-200	SP (mV)	0

0.2	DEEP RESISTIVITY (Ohm-m)	2000
0.2	MEDIUM RESISTIVITY (Ohm-m)	2000
0.2	RLL3 (Ohm-m)	2000
10000	LINE TENSION (lb)	0

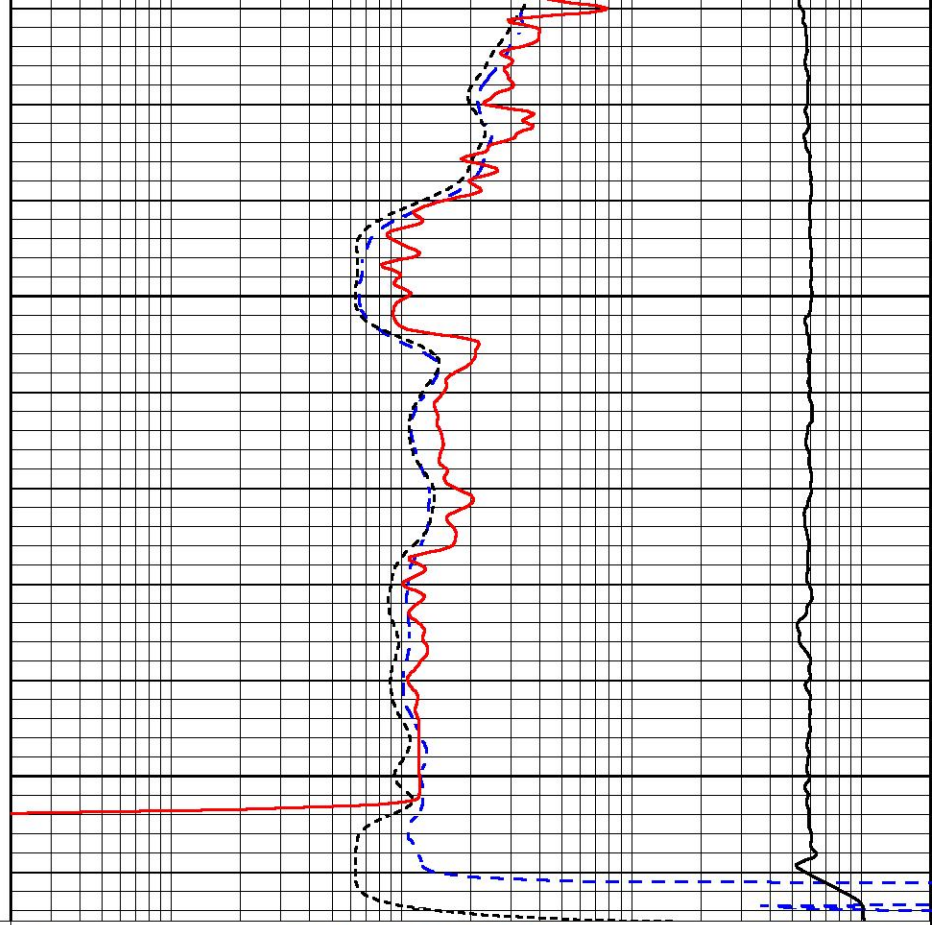




4000

4050

0      GAMMA RAY (GAPI)      150  
 -200      SP (mV)      0



0.2      DEEP RESISTIVITY (Ohm-m)      2000  
 0.2      MEDIUM RESISTIVITY (Ohm-m)      2000  
 0.2      RLL3 (Ohm-m)      2000  
 10000      LINE TENSION (lb)      0



Company      New Age Oil, LLC  
 Well      Bunker #3  
 Field      Unnamed  
 County      Trego  
 State      Kansas