



MIDWEST WIRELINE

MICRORESISTIVITY LOG

Company **New Age Oil, LLC**
 Well **Bunker #3**
 Field **Unnamed**
 County **Trego** State **Kansas**

Company **New Age Oil, LLC**
 Well **Bunker #3**
 Field **Unnamed**
 County **Trego**
 State **Kansas**

Location: **API #: 15-195-23117-00-00**
SE - NW - NW - SE
2200' FSL & 2200' FEL
SEC 24 TWP 12S RGE 22W

Permanent Datum **Ground Level** Elevation **2339'**
 Log Measured From **Kelly Bushing**
 Drilling Measured From **Kelly Bushing**

Other Services
CNL/CDL DIL

Elevation
 K.B. **2347'**
 D.F. **N/A**
 G.L. **2339'**

Date	5/3/2021
Run Number	One
Depth Driller	4060'
Depth Logger	4060'
Bottom Logged Interval	4059'
Top Log Interval	3300'
Casing Driller	8.625' @ 221'
Casing Logger	221'
Bit Size	7.875"
Type Fluid in Hole	Chemical
Salinity, ppm CL	4000
Density / Viscosity	9.1 53
pH / Fluid Loss	10.0 9.2
Source of Sample	FLOWLINE
Rm @ Meas. Temp	0.80 @ 60
Rmt @ Meas. Temp	0.60 @ 60
Rmc @ Meas. Temp	1.08 @ 60
Source of Rmf / Rmc	CHARTS
Rm @ BHT	0.41 @ 117
Operating Rig Time	3 Hours
Max Rec. Temp. F	117
Equipment Number	P-24
Location	HAYS
Recorded By	D. Schmidt
Witnessed By	Logan Behr

<<< Fold Here >>>

All interpretations are opinions based on inferences from electrical or other measurements and Midwest Wireline LLC cannot and does not guarantee the accuracy or correctness of any interpretation, and Midwest Wireline LLC will not be liable or responsible for any loss, costs, damages, or expenses incurred or sustained by anyone resulting from any interpretation made by any of our officers, agents or employees.

Comments

N/A DENOTES NOT AVAILABLE OR NON-APPLICABLE.

I-70 & Ogallah,
 North to Old 40, East to 340th Ave, 1 North,
 East into

Log Measured From: **Kelly Bushing** 8 Ft. Above Permanent Datum

THANK YOU FOR USING MIDWEST WIRELINE LLC
 785-625-3858

Your Midwest Wireline Crew		This Log Record Was Witnessed By	
Engineer: D. Schmidt	Operator:	Primary Witness: Logan Behr	Secondary Witness:
Operator:	Operator:	Secondary Witness:	Secondary Witness:
Operator:		Secondary Witness:	

Company	Offset (ft)	Depth	Description	Length (ft)	C.D. (in)	Weight (lb)
---------	-------------	-------	-------------	-------------	-----------	-------------

Sensor	Offset (ft)	Schematic	Description	Length (ft)	O.D. (in)	Weight (lb)
GR	44.50		GR-M&W (233-M&W)	3.00	3.50	50.00
CNLSC CNSSC	41.40 40.65		CNT-M&W (207-MW)	5.50	3.50	100.00
LSD DCAL SSD	32.35 32.33 31.85		CDL-M&W (817-947)	8.50	4.00	250.00
MCAL MI MN	20.87 20.87 20.87		ML-PSI UDM ML (UDM-01) Stackable Microlog Tools	11.50	4.00	215.00
RLL3F RLL3	15.80 15.80					
CILD	8.00		DIL-PSI HIGH TEMP (952-828)	18.50	3.50	220.00
CILM	4.70					
SP	0.20					

Dataset: new age_bunker 3.db: field/well/stkml/pass4.1
 Total length: 47.00 ft
 Total weight: 835.00 lb
 O.D.: 4.00 in

Log Variables

DatabaseC:\ProgramData\Warrior\Data\new age_bunker 3.db
 Dataset field/well/stkml/pass4.1/_vars_

Top - Bottom

A	BOREID in	BOTTEMP degF	CASEOD in	CASETHCK in	FLUIDDEN g/cc	M	MATRXDEN g/cc
1	7.875	117	5.5	0	1	2	2.71
NPORSEL	PERFS	SNDERR mmho/m	SNDERRM mmho/m	SPSHIFT mV	SRFTEMP degF	SZCOR	TDEPTH ft
Limestone	No	0	0	320	60	Off	4060

Variable Description

A : Cement Factor (a)
 BOREID : Borehole I.D.
 BOTTEMP : Bottom Hole Temperature
 CASEOD : Casing O.D.
 CASETHCK : Casing Thickness
 FLUIDDEN : Fluid Density
 M : Cement Exp (m)
 MATRXDEN : Matrix Density

NPORSEL : Neutron Porosity Curve Select
 PERFS : Perforation Flag
 SNDERR : Deep Sonde Error Correction
 SNDERRM : Medium Sonde Error Correction
 SPSHIFT : S.P. Baseline Offset
 SRFTEMP : Surface Temperature
 SZCOR : CN Size Cor. ?
 TDEPTH : Total Depth



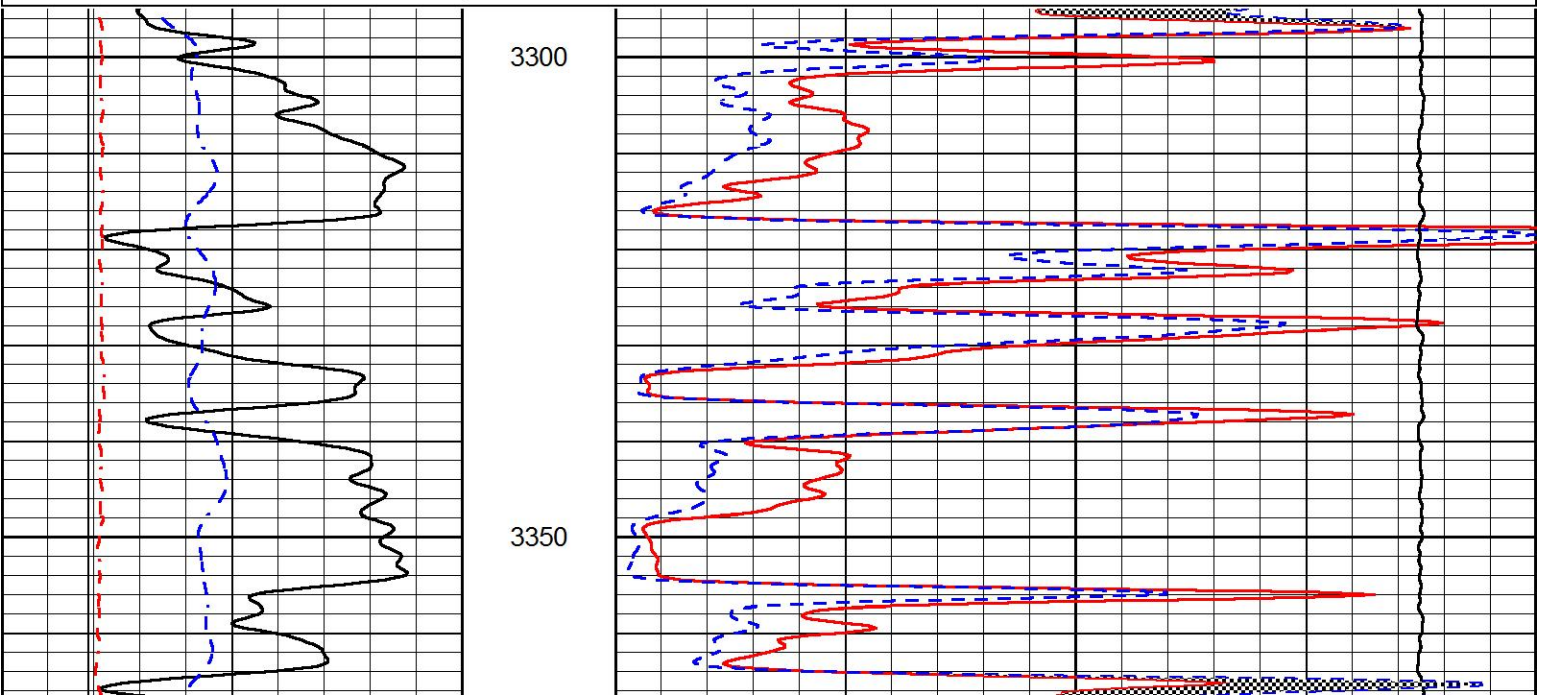
DETAIL SECTION

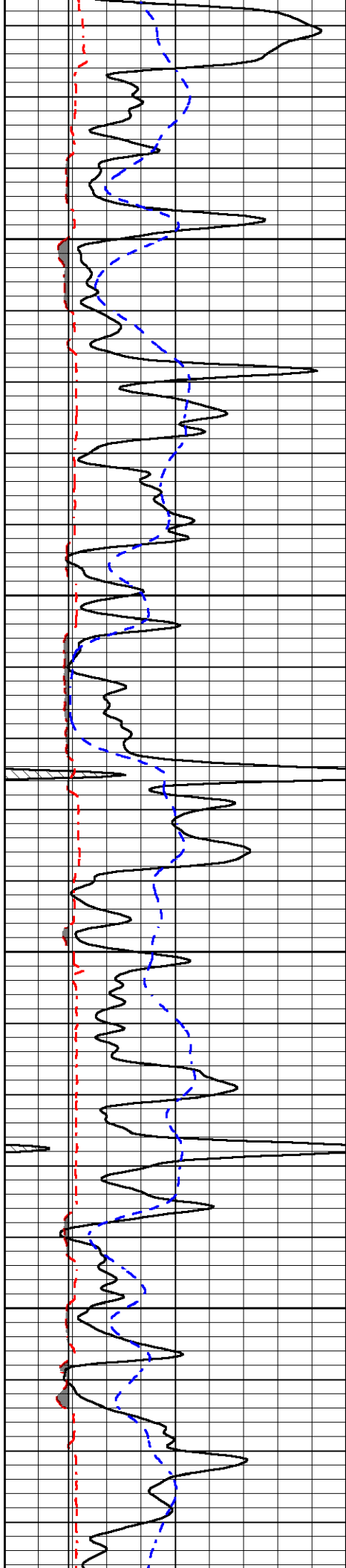
MAIN PASS

Database File new age_bunker 3.db
 Dataset Pathname stkml/pass4.1
 Presentation Format _micro
 Dataset Creation Mon May 03 03:23:50 2021
 Charted by Depth in Feet scaled 1:240

0	GAMMA RAY (GAPI)	150
6	MCAL (in)	16
6	Bit Size (in)	16
-200	sp (mV)	0

0	MICRO INVERSE 1 X 1 (Ohm-m)	40
0	MICRO NORMAL 2" (Ohm-m)	40
10000	Line Weight (lb)	0



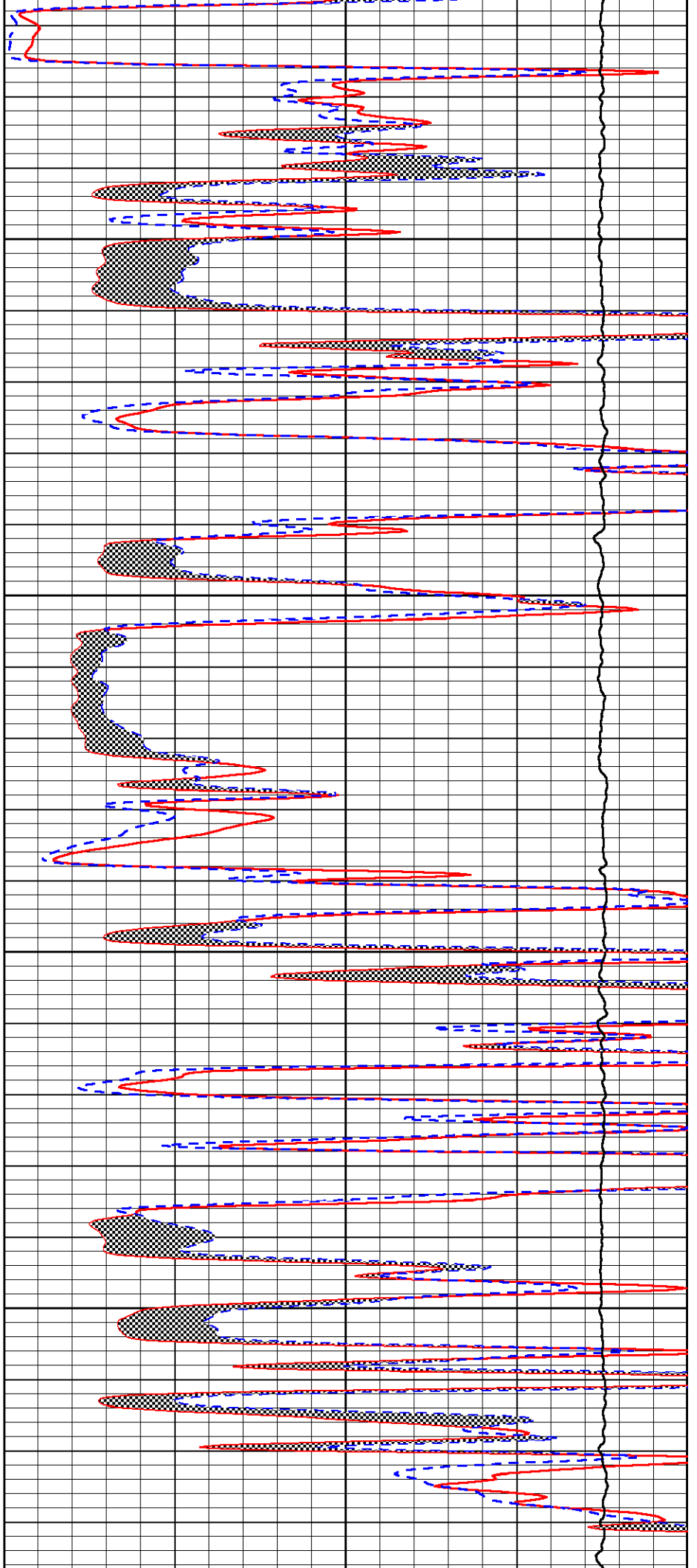


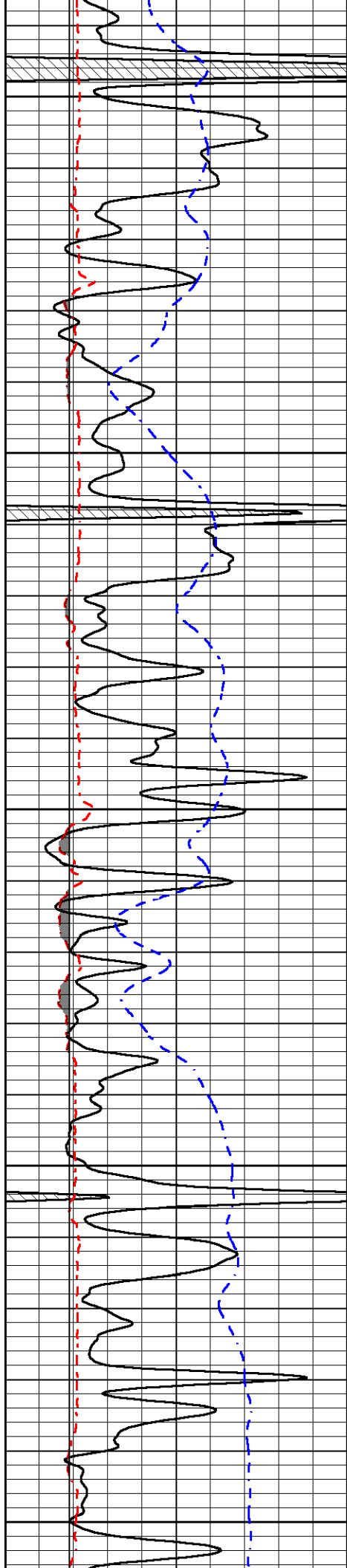
3400

3450

3500

3550





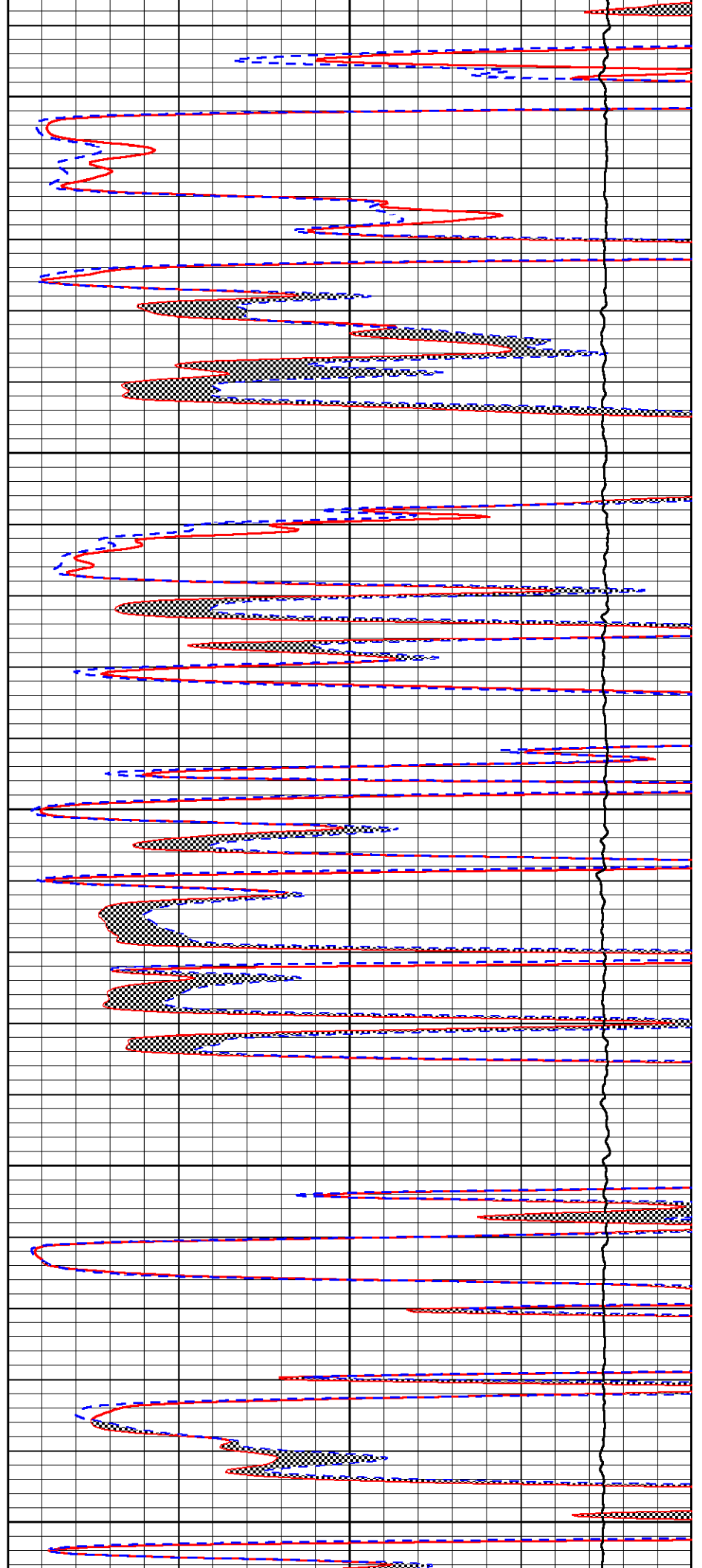
3600

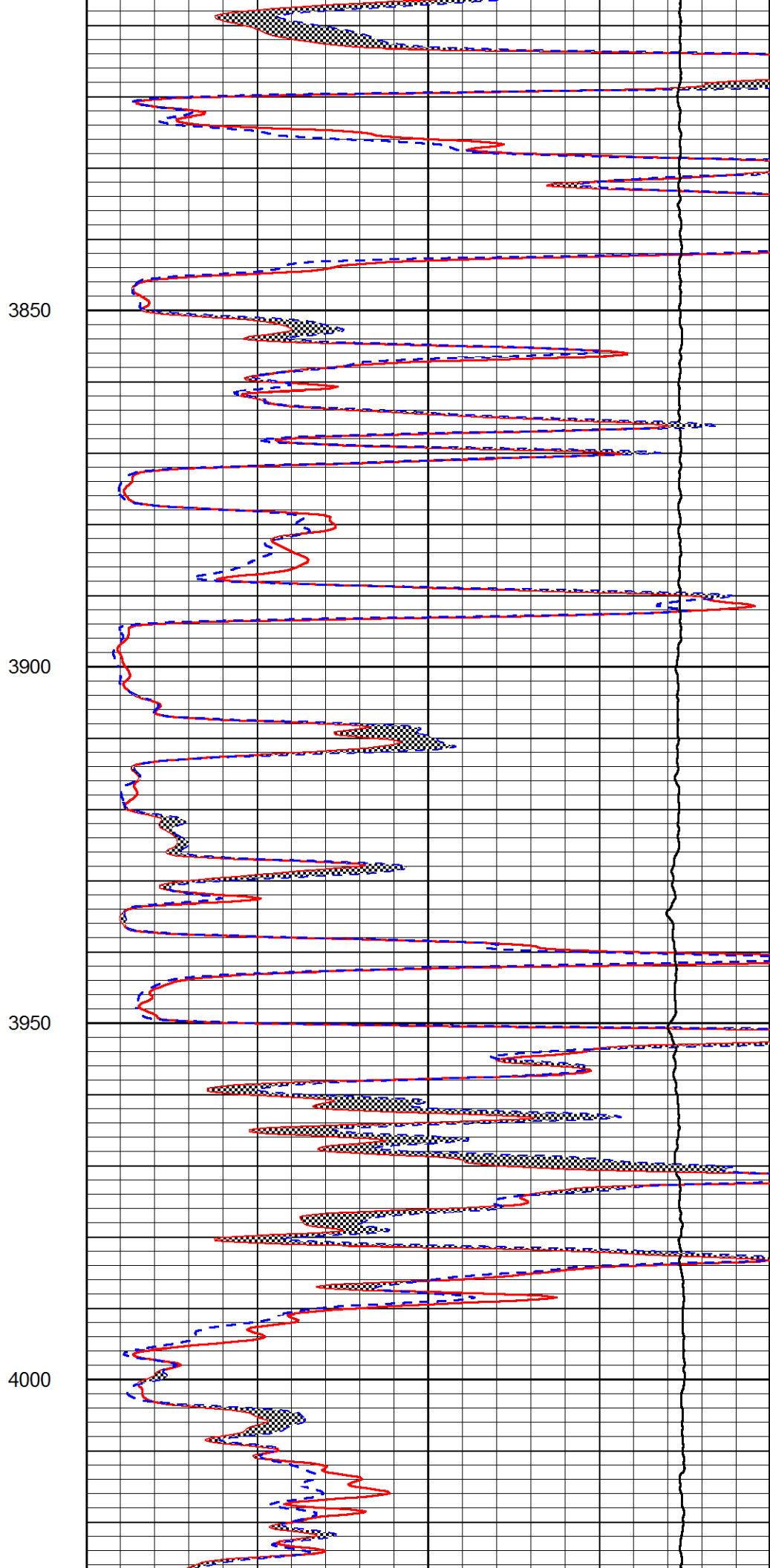
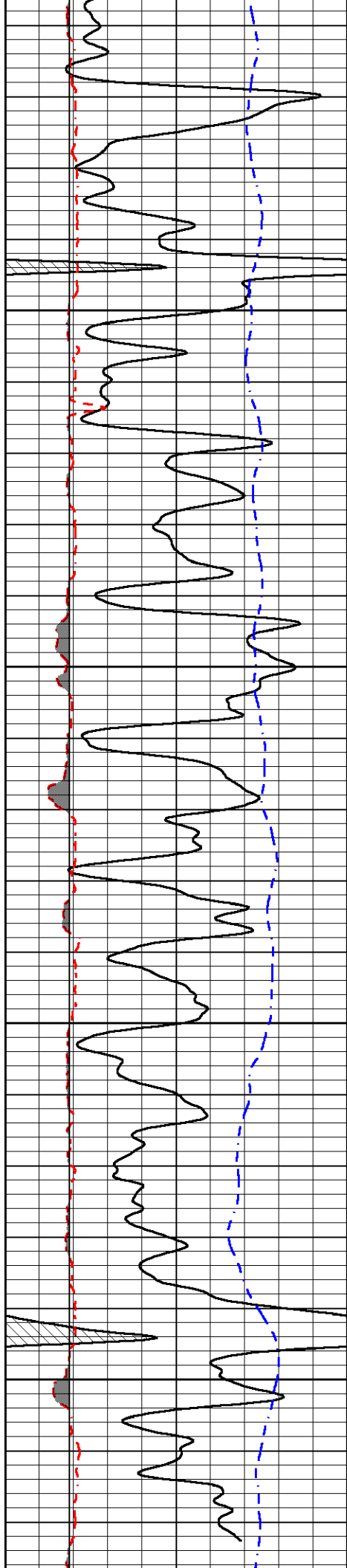
3650

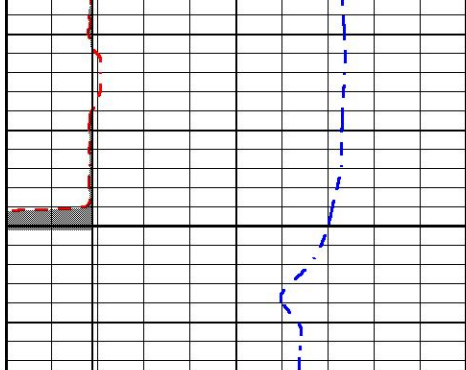
3700

3750

3800

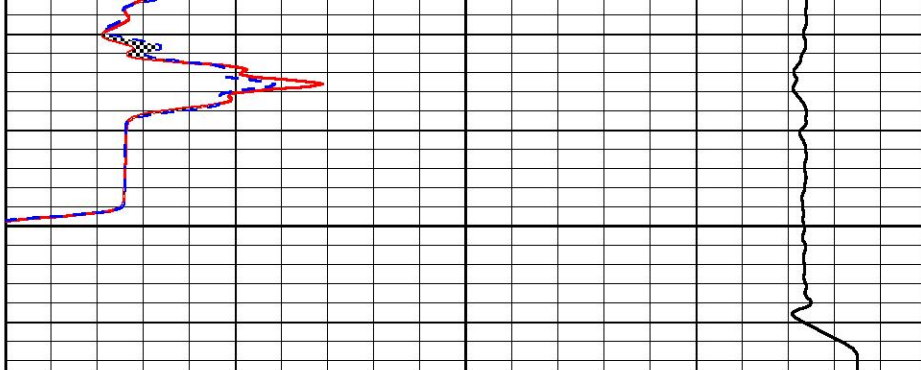






0	GAMMA RAY (GAPI)	150
6	MCAL (in)	16
6	Bit Size (in)	16
-200	sp (mV)	0

4050



0	MICRO INVERSE 1 X 1 (Ohm-m)	40
0	MICRO NORMAL 2" (Ohm-m)	40
10000	Line Weight (lb)	0



MIDWEST WIRELINE

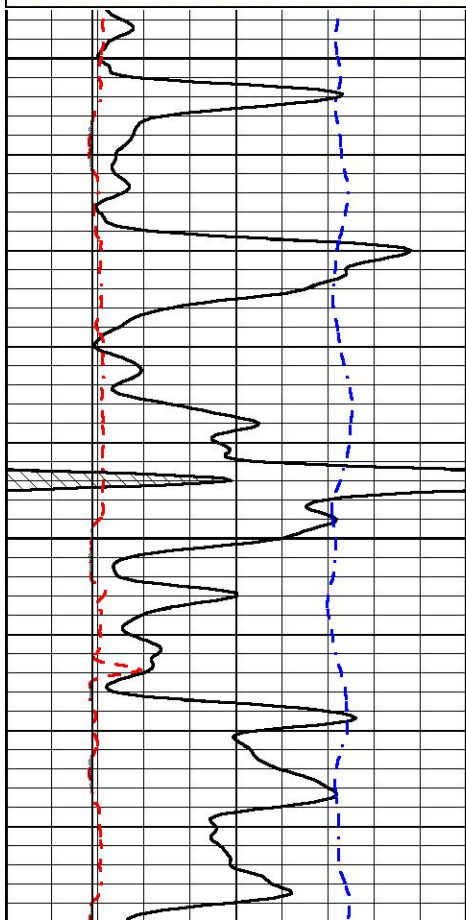
REPEAT SECTION

REPEAT PASS

Database File new age_bunker 3.db
 Dataset Pathname stkml/pass2.1
 Presentation Format _micro
 Dataset Creation Mon May 03 03:09:29 2021
 Charted by Depth in Feet scaled 1:240

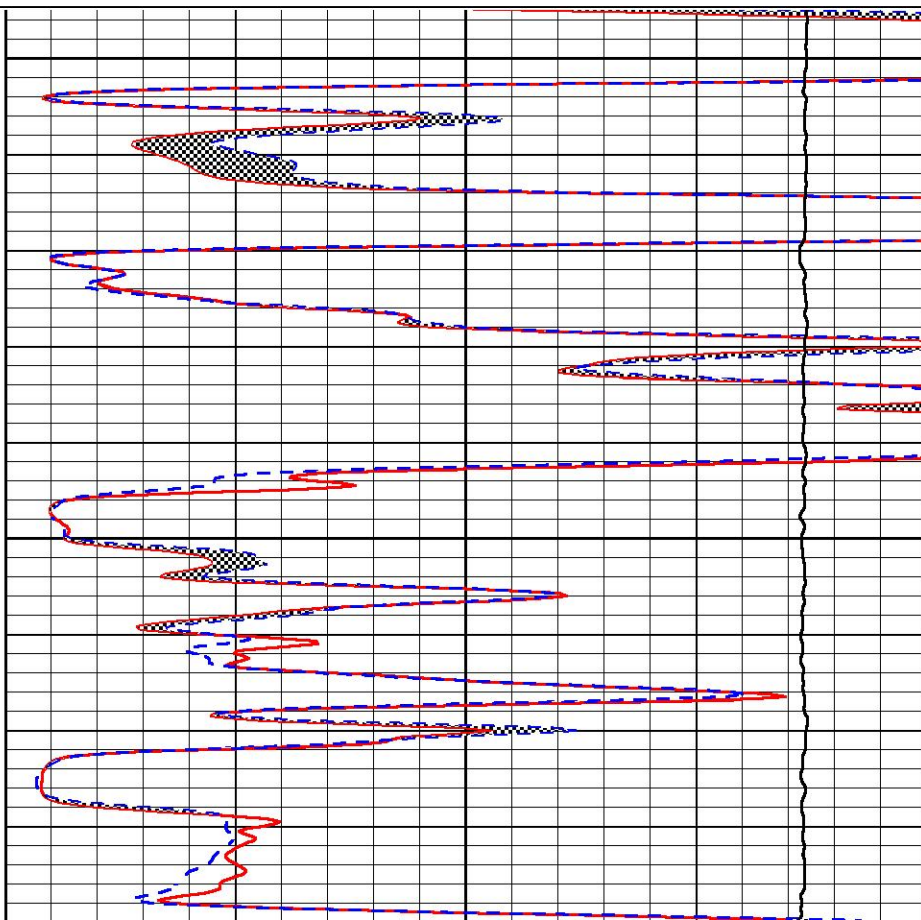
0	GAMMA RAY (GAPI)	150
6	MCAL (in)	16
6	Bit Size (in)	16
-200	sp (mV)	0

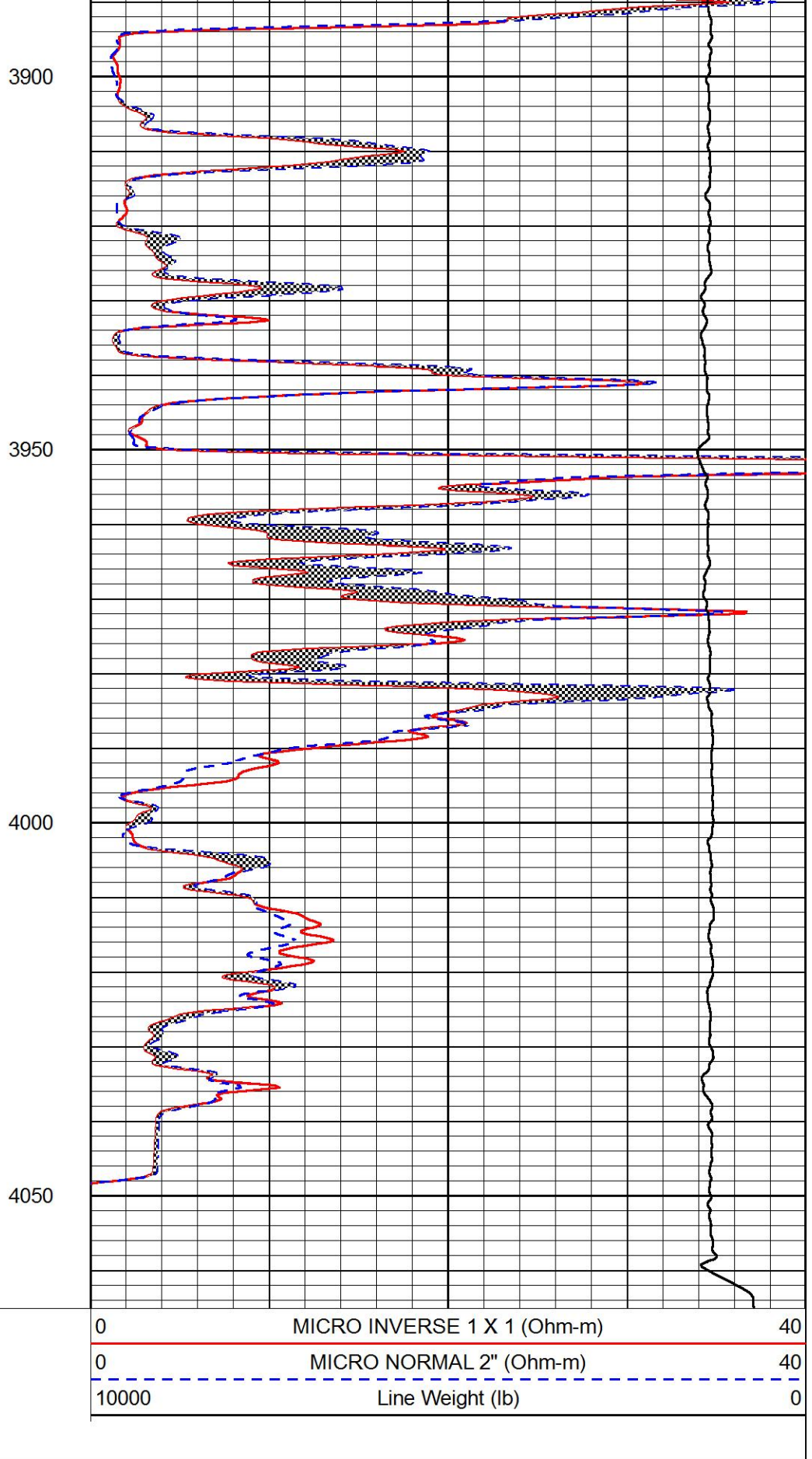
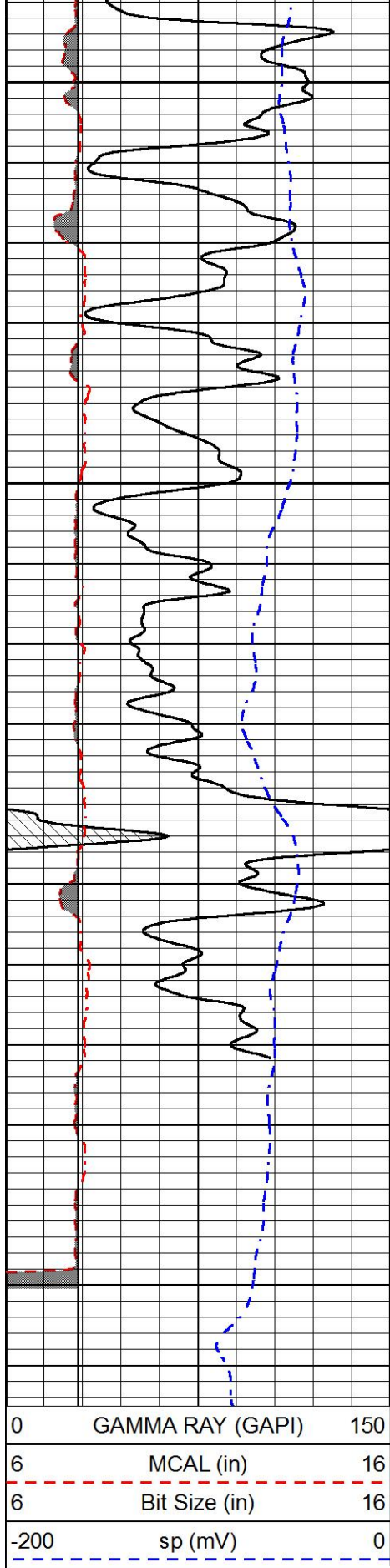
0	MICRO INVERSE 1 X 1 (Ohm-m)	40
0	MICRO NORMAL 2" (Ohm-m)	40
10000	Line Weight (lb)	0



3800

3850





Company New Age Oil, LLC
 Well Bunker #3
 Field Unnamed



County
State

Trego
Kansas