



**COMPENSATED
DENSITY/NEUTRON
PE LOG**

Company SHAKESPEARE OIL COMPANY, INC.

Well TERRY #1-19

Field WALNUT FORK SOUTHEAST

County LANE State KANSAS

Location: API #: 15-101-22658-0000

1910' FSL & 1450' FEL
NE SE NW SE
SEC 19 TWP 17S RGE 28W

Other Services
DILMEL

Permanent Datum GROUND LEVEL Elevation 2738

Log Measured From KELLY BUSHING 10' A.G.L.
Drilling Measured From KELLY BUSHING

Elevation

K.B. 2748
D.F. 2746
G.L. 2738

| | | | |
|------------------------------|-------------------|--------------------|--|
| Date | 9/26/21 | | |
| Run Number | ONE | | |
| Depth Driller | 4580 | | |
| Depth Logger | 4584 | | |
| Bottom Logged Interval | 4560 | | |
| Top Log Interval | 3600 | | |
| Casing Driller | 8 5/8" @ 266 | | |
| Casing Logger | 266 | | |
| Bit Size | 7 7/8 | | |
| Type Fluid in Hole | CHEMICAL MUD | CHLORIDES 3400 PPM | |
| Density / Viscosity | 9.2/58 | | |
| pH / Fluid Loss | 10.5/8.0 | | |
| Source of Sample | FLOWLINE | | |
| Rm @ Meas. Temp | 1.10 @ 75F | | |
| Rmf @ Meas. Temp | 0.82 @ 75F | | |
| Rmc @ Meas. Temp | 1.32 @ 75F | | |
| Source of Rmf / Rmc | MEASUREMENT | | |
| Rm @ BHT | 0.68 @ 121F | | |
| Time Circulation Stopped | 2 HOURS | | |
| Time Logger on Bottom | //// | | |
| Maximum Recorded Temperature | 121F | | |
| Equipment Number | 3802 | | |
| Location | HAYS, KANSAS | | |
| Recorded By | JASON CAPPELLUCCI | | |
| Witnessed By | VERN SCHRAG | | |

<<< Fold Here >>>

All interpretations are opinions based on inferences from electrical or other measurements and we cannot and do not guarantee the accuracy or correctness of any interpretation, and we shall not, except in the case of gross or willful negligence on our part, be liable or responsible for any loss, costs, damages, or expenses incurred or sustained by anyone resulting from any interpretation made by any of our officers, agents or employees. These interpretations are also subject to our general terms and conditions set out in our current Price Schedule.

Comments

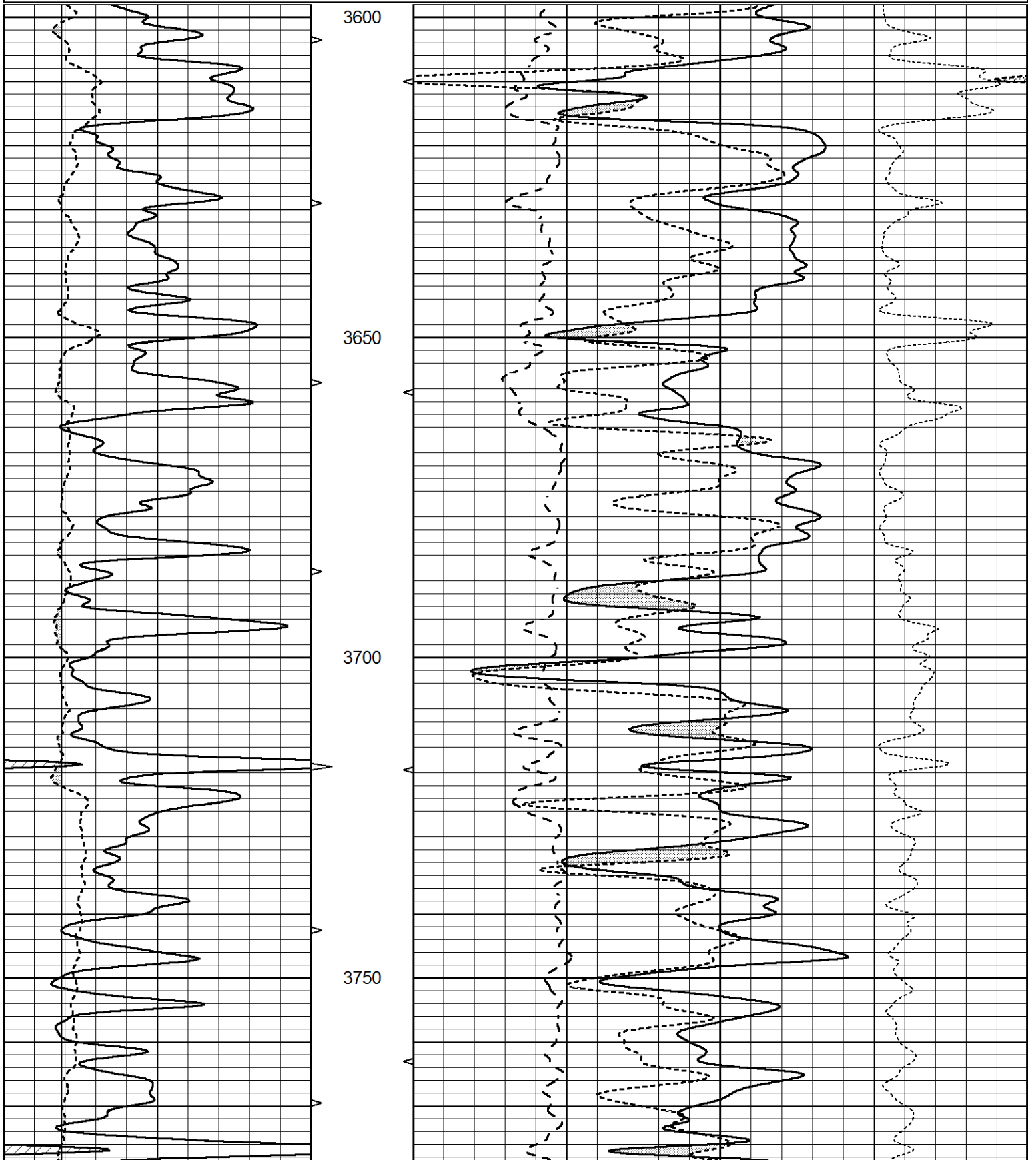
THANK YOU FOR USING ELI WIRELINE SERVICES, HAYS, KS. (785) 628-6395
DIRECTIONS
DIGHTON, KS. - 5 NORTH TO RD. 200 - 1 EAST - CURVE NORTH 1/2 MILE
WEST INTO

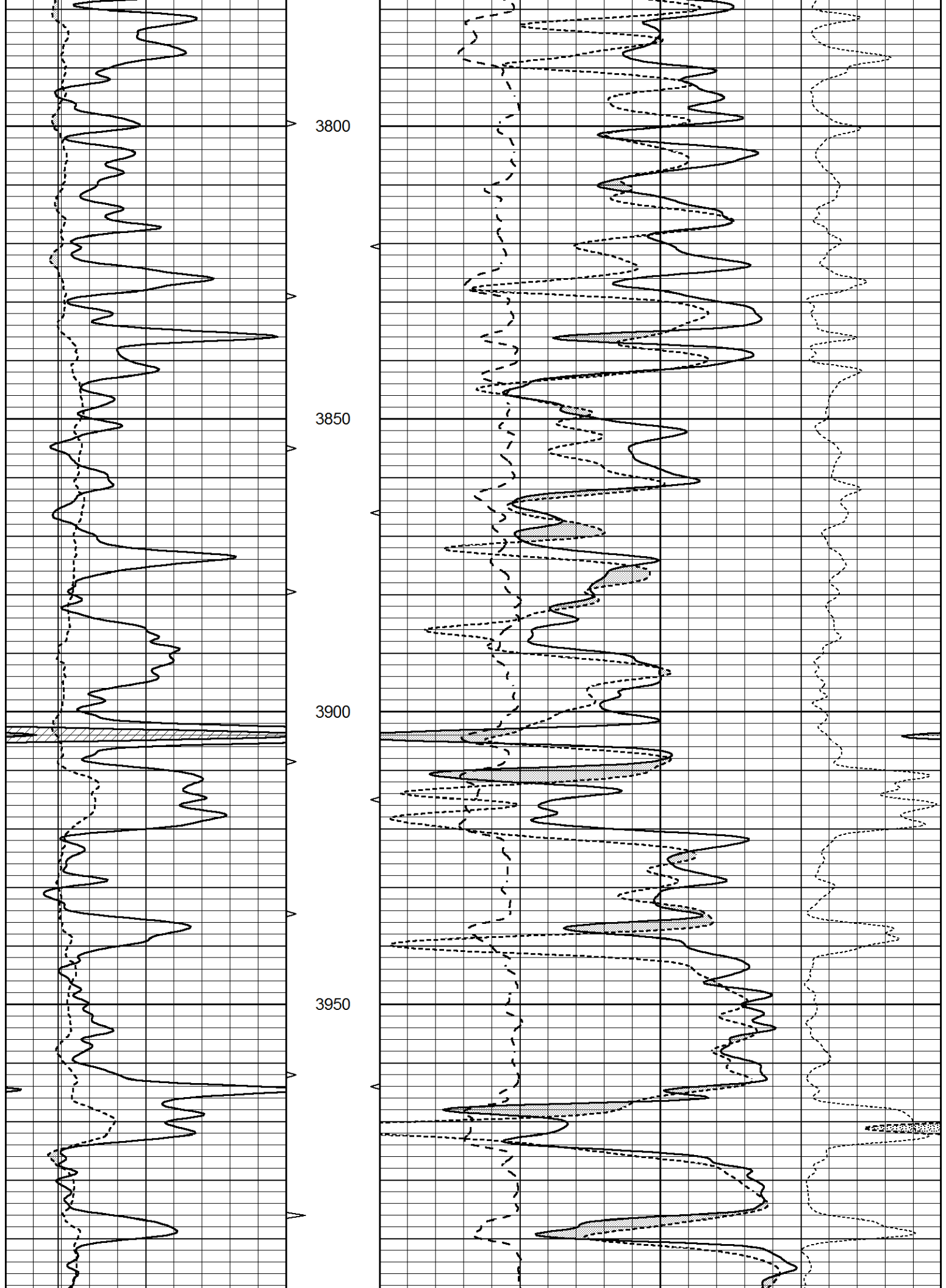


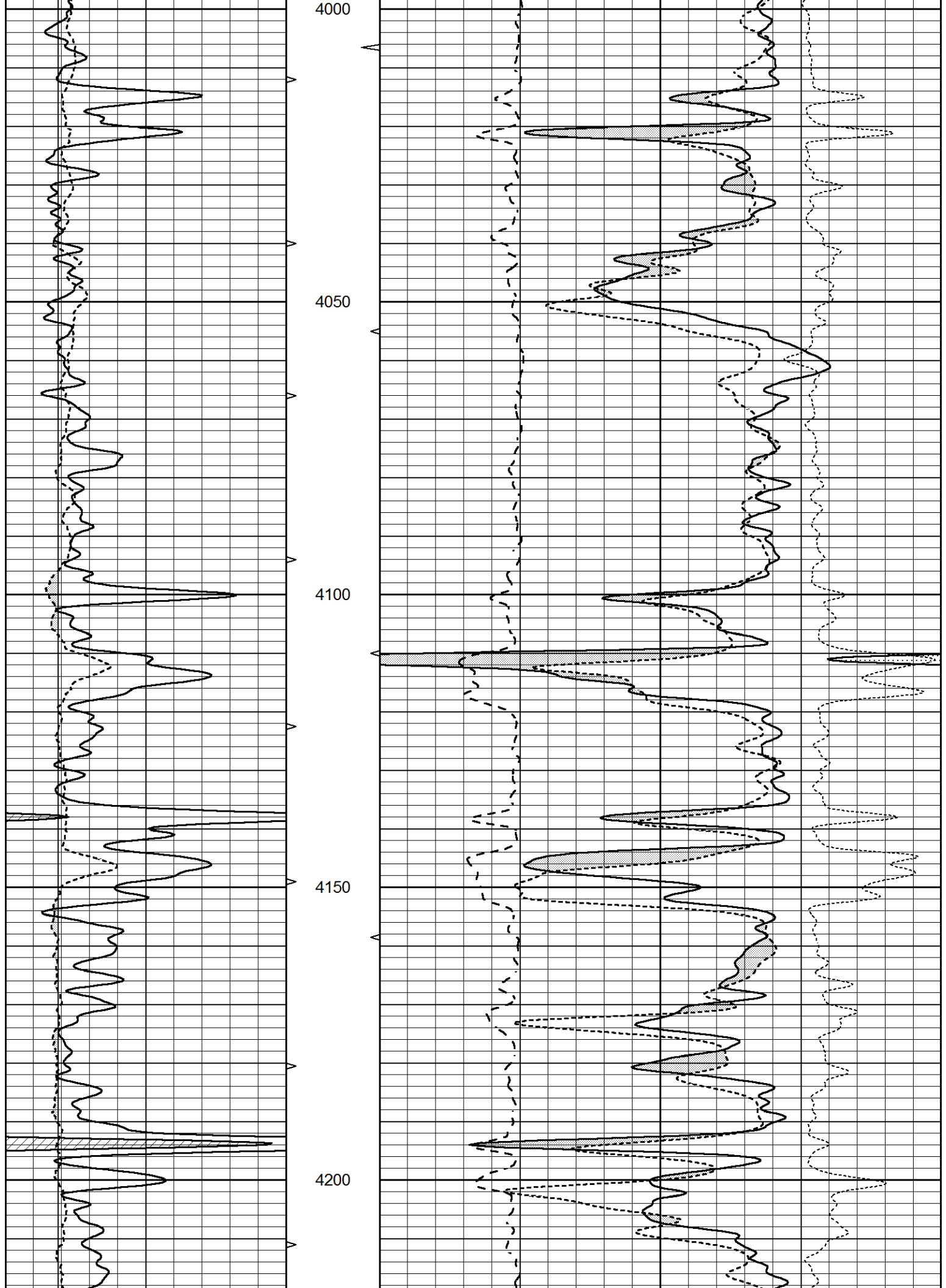
MAIN SECTION

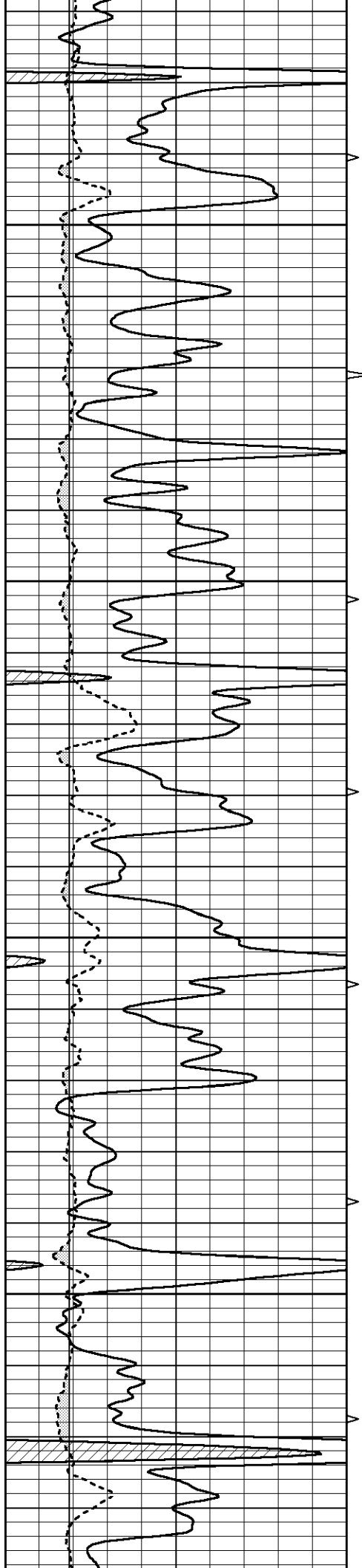
Database File 5857pe.db
 Dataset Pathname pass3.1
 Presentation Format _ldt_neu
 Dataset Creation Sun Sep 26 11:35:43 2021
 Charted by Depth in Feet scaled 1:240

| | | | | | | | | | |
|---|------------------|-----|----------|----|--------------------------|----|-----------|-------------------|------|
| 0 | GAMMA RAY (GAPI) | 150 | ABHV | 30 | COMPENSATED DENSITY (pu) | | | -10 | |
| 6 | CALIPER (in) | 16 | 10 (ft3) | 0 | COMPENSATED NEUTRON (pu) | | | -10 | |
| | | | | 0 | PE | 10 | -0.25 | CORRECTION (g/cc) | 0.25 |
| | | | | 0 | (ft3) | 10 | LTEN (lb) | | 5000 |







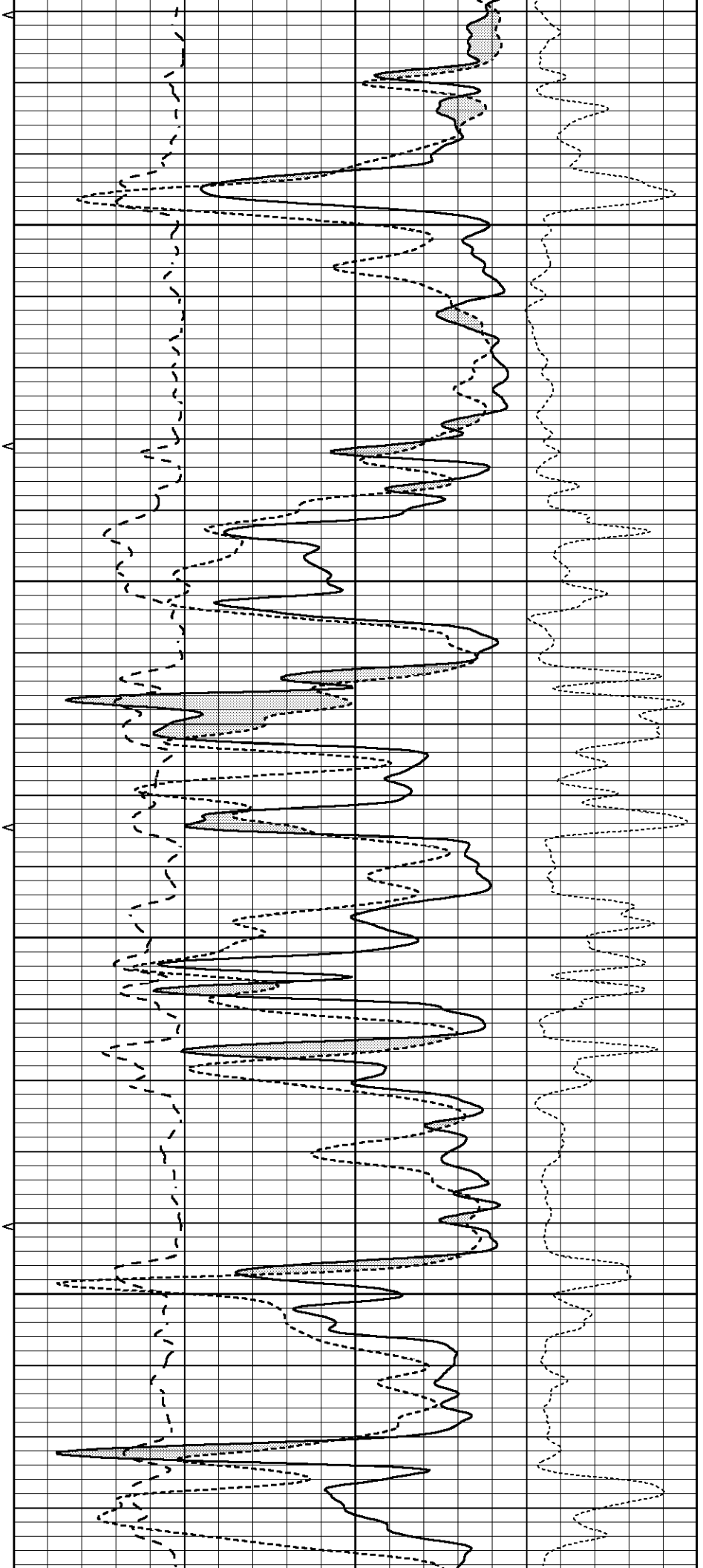


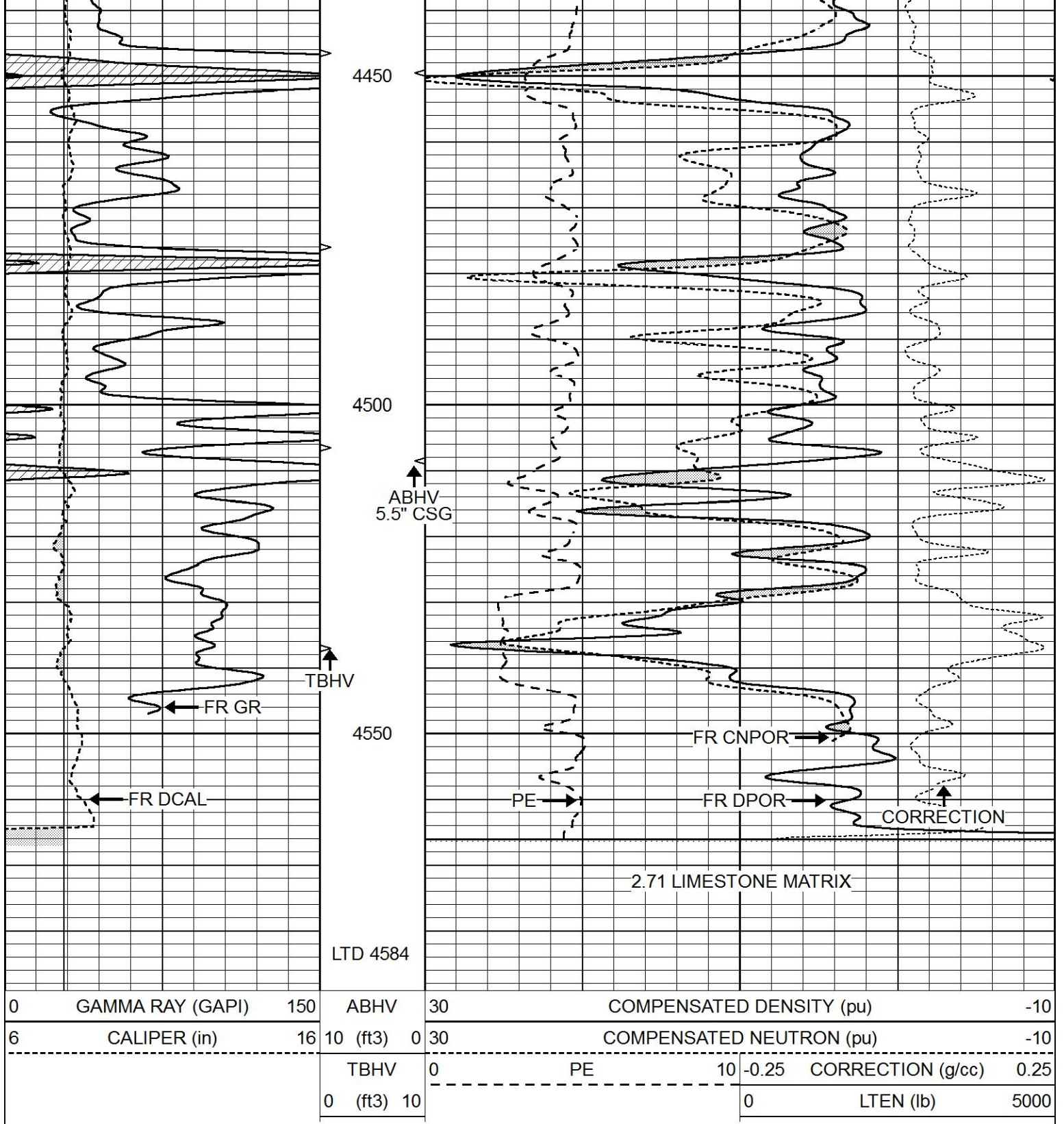
4250

4300

4350

4400



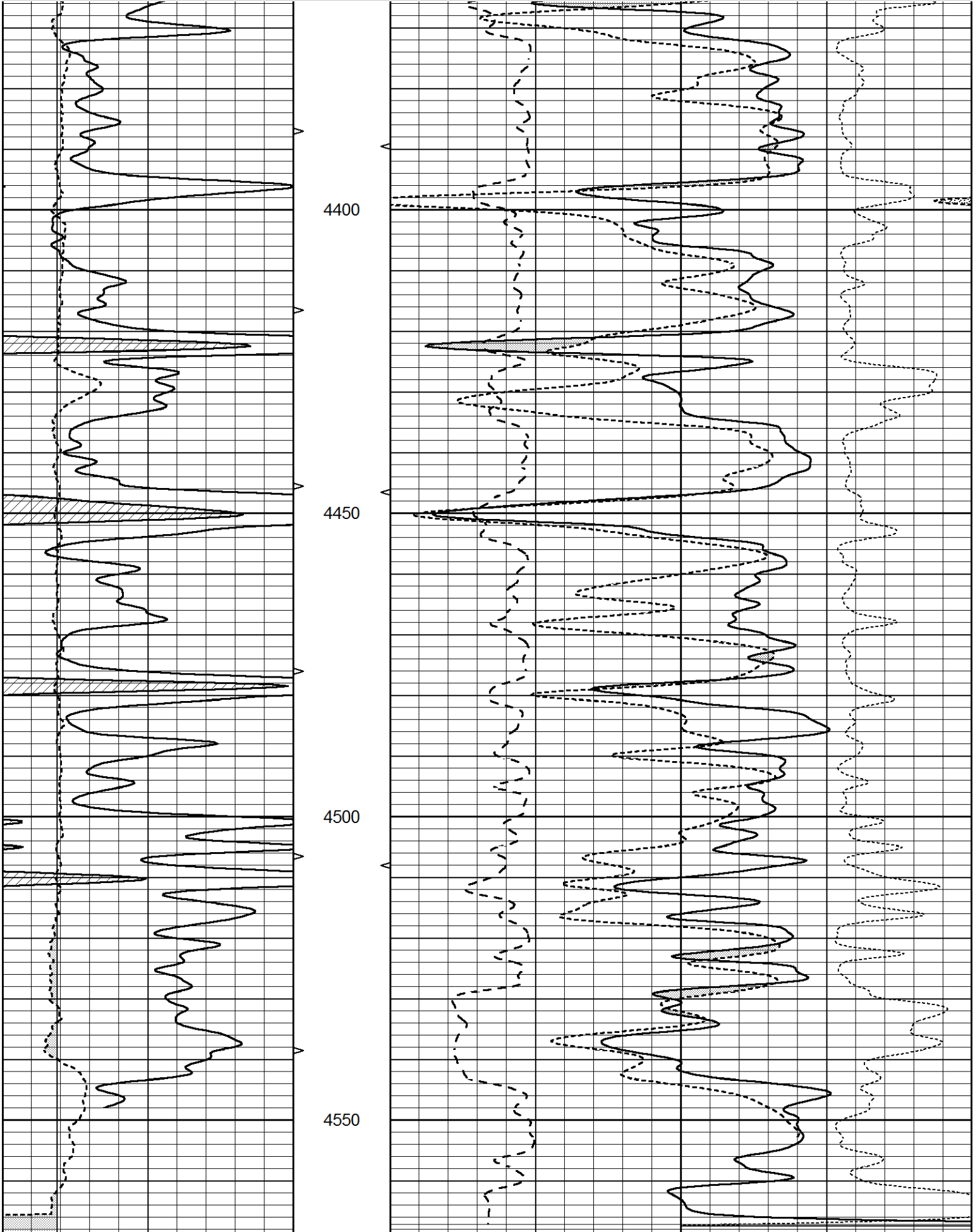


REPEAT SECTION

Database File 5857pe.db
 Dataset Pathname pass2.1
 Presentation Format _ldt_neu
 Dataset Creation Sun Sep 26 11:34:12 2021
 Charted by Depth in Feet scaled 1:240

| | | | | | | |
|---|------------------|-----|------|----|--------------------------|-----|
| 0 | GAMMA RAY (GAPI) | 150 | ABHV | 30 | COMPENSATED DENSITY (pu) | -10 |
|---|------------------|-----|------|----|--------------------------|-----|

| | | | | | | | | | |
|---|--------------|----|----------|----|----|--------------------------|-------|-------------------|------|
| 6 | CALIPER (in) | 16 | 10 (ft3) | 0 | 30 | COMPENSATED NEUTRON (pu) | | | -10 |
| | | | TBHV | 0 | PE | 10 | -0.25 | CORRECTION (g/cc) | 0.25 |
| | | | 0 (ft3) | 10 | | | 0 | LTEN (lb) | 5000 |



| | | | | | | | | | |
|---|------------------|-----|------------|----|--------------------------|----|-------|-------------------|------|
| 0 | GAMMA RAY (GAPI) | 150 | ABHV | 30 | COMPENSATED DENSITY (pu) | | | | -10 |
| 6 | CALIPER (in) | 16 | 10 (ft3) 0 | 30 | COMPENSATED NEUTRON (pu) | | | | -10 |
| | | | TBHV | 0 | PE | 10 | -0.25 | CORRECTION (g/cc) | 0.25 |
| | | | 0 (ft3) 10 | | | | 0 | LTEN (lb) | 5000 |

Calibration Report

Database File 5857pe.db
 Dataset Pathname pass2.1
 Dataset Creation Sun Sep 26 11:34:12 2021

Dual Induction Calibration Report

Serial-Model: FW1410-55-Probe
 Surface Cal Performed: Tue Feb 19 11:44:18 2019
 Downhole Cal Performed: Tue Feb 19 11:44:24 2019
 After Survey Verification Performed: Tue Feb 19 11:44:27 2019

Surface Calibration

| Loop: | Readings | | | | References | | | Results | |
|-----------|----------|-------|---|-------|------------|--------|---------|---------|---|
| | Air | Loop | | | Air | Loop | | m | b |
| Deep | 0.011 | 0.656 | V | 1.000 | 400.000 | mmho/m | 618.595 | -5.524 | |
| Medium | -0.000 | 0.731 | V | 1.000 | 464.000 | mmho/m | 632.856 | 1.197 | |
| Internal: | Zero | Cal | | Zero | Cal | | m | b | |
| Deep | 0.007 | 0.649 | V | 0.000 | 400.000 | mmho/m | 623.784 | -4.595 | |
| Medium | 0.004 | 0.743 | V | 0.000 | 464.000 | mmho/m | 627.284 | -2.251 | |

Downhole Calibration

| | Readings | | | | References | | | Results | |
|--------|----------|---------|--------|--------|------------|--------|-------|---------|----|
| | Zero | Cal | | | Zero | Cal | | m' | b' |
| Deep | -0.824 | 395.917 | mmho/m | -0.976 | 397.550 | mmho/m | 1.004 | -0.149 | |
| Medium | 3.565 | 471.327 | mmho/m | 3.468 | 471.590 | mmho/m | 1.001 | -0.099 | |
| LL3 | | 7.503 | V | | 1500.000 | Ohm-m | | | |
| | | 0.001 | V | | 20.000 | Ohm-m | | | |
| | | -7.481 | V | | 3745.000 | mmho-m | | | |

After Survey Verification

| | Readings | | | | Targets | | | Results | |
|--------|----------|-------|--------|--------|----------|--------|-------|---------|----|
| | Zero | Cal | | | Zero | Cal | | m' | b' |
| Deep | 0.000 | 0.000 | mmho/m | -0.824 | 395.917 | mmho/m | 1.000 | 0.000 | |
| Medium | 0.000 | 0.000 | mmho/m | 3.565 | 471.327 | mmho/m | 1.000 | 0.000 | |
| LL3 | | 0.000 | Ohm-m | | 1500.000 | Ohm-m | | | |
| | | 0.000 | Ohm-m | | 20.000 | Ohm-m | | | |
| | | 0.000 | mmho-m | | 3745.000 | mmho-m | | | |

Compensated Neutron Calibration Report

Serial Number: 080621PMC
 Tool Model: NABORS

| Detector | Readings | Measured | Target |
|-------------|----------|----------|--------|
| Short Space | cps | | |
| Long Space | cps | pu | pu |

POST-SURVEY VERIFICATION

| Detector | Readings | Measured | Target |
|-------------|----------|----------|--------|
| Short Space | cps | | |
| Long Space | cps | pu | pu |

Gamma Ray Calibration Report

| | | | |
|---------------------|--------------------------|----------|--|
| Serial Number: | 7 | | |
| Tool Model: | Probe1 | | |
| Performed: | Tue Jan 19 17:50:08 2021 | | |
| Calibrator Value: | 1.0 | GAPI | |
| Background Reading: | 0.0 | cps | |
| Calibrator Reading: | 1.0 | cps | |
| Sensitivity: | 0.5300 | GAPI/cps | |