



TRIPLE
COMBO
LOG

Company SHAKESPEARE OIL COMPANY, INC.

Well TERRY #1-19

Field WALNUT FORK SOUTHEAST

County LANE State KANSAS

Location: API #: 15-101-22658-0000

1910' FSL & 1450' FEL
NE SE NW SE

SEC 19 TWP 17S RGE 28W

Permanent Datum GROUND LEVEL Elevation 2738
Log Measured From KELLY BUSHING 10' A.G.L.
Drilling Measured From KELLY BUSHING

Other Services
CDL/CNL/PE
DIL/MEL

Elevation

K.B. 2748
D.F. 2746
G.L. 2738

Date	9/26/21
Run Number	TWO
Depth Driller	4580
Depth Logger	4584
Bottom Logged Interval	4582
Top Log Interval	3600
Casing Driller	8 5/8" @ 266
Casing Logger	266
Bit Size	7 7/8
Type Fluid in Hole	CHEMICAL MUD
Density / Viscosity	9.2/58
pH / Fluid Loss	10.5/8.0
Source of Sample	FLOWLINE
Rm @ Meas. Temp	1.10 @ 75F
Rmf @ Meas. Temp	0.82 @ 75F
Rmc @ Meas. Temp	1.32 @ 75F
Source of Rmf / Rmc	MEASUREMENT
Rm @ BHT	0.68 @ 121F
Time Circulation Stopped	2 HOURS
Time Logger on Bottom	////
Maximum Recorded Temperature	121F
Equipment Number	3802
Location	HAYS, KANSAS
Recorded By	JASON CAPPELLUCCI
Witnessed By	VERN SCHRAG

<<< Fold Here >>>

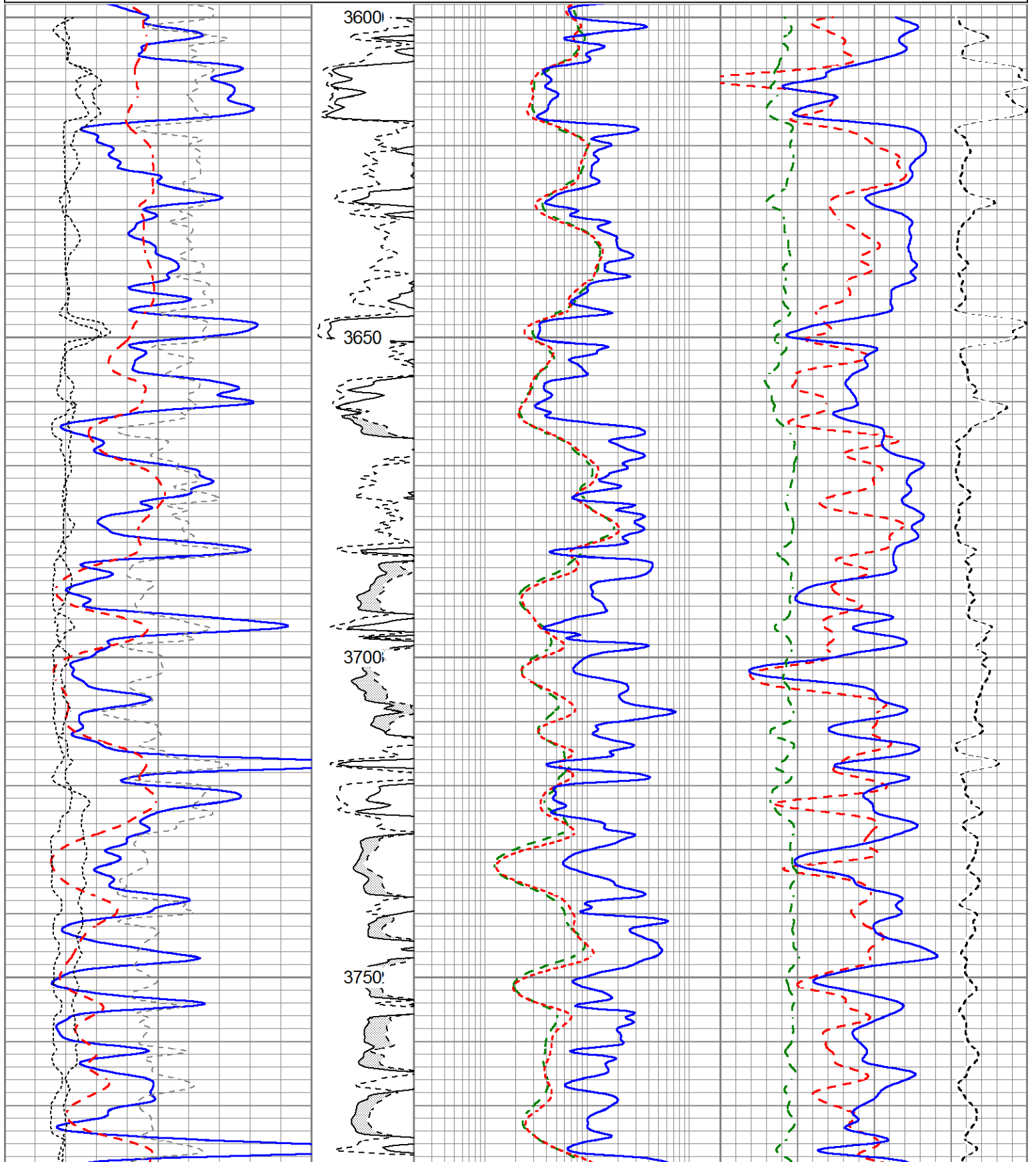
All interpretations are opinions based on inferences from electrical or other measurements and we cannot and do not guarantee the accuracy or correctness of any interpretation, and we shall not, except in the case of gross or willful negligence on our part, be liable or responsible for any loss, costs, damages, or expenses incurred or sustained by anyone resulting from any interpretation made by any of our officers, agents or employees. These interpretations are also subject to our general terms and conditions set out in our current Price Schedule.

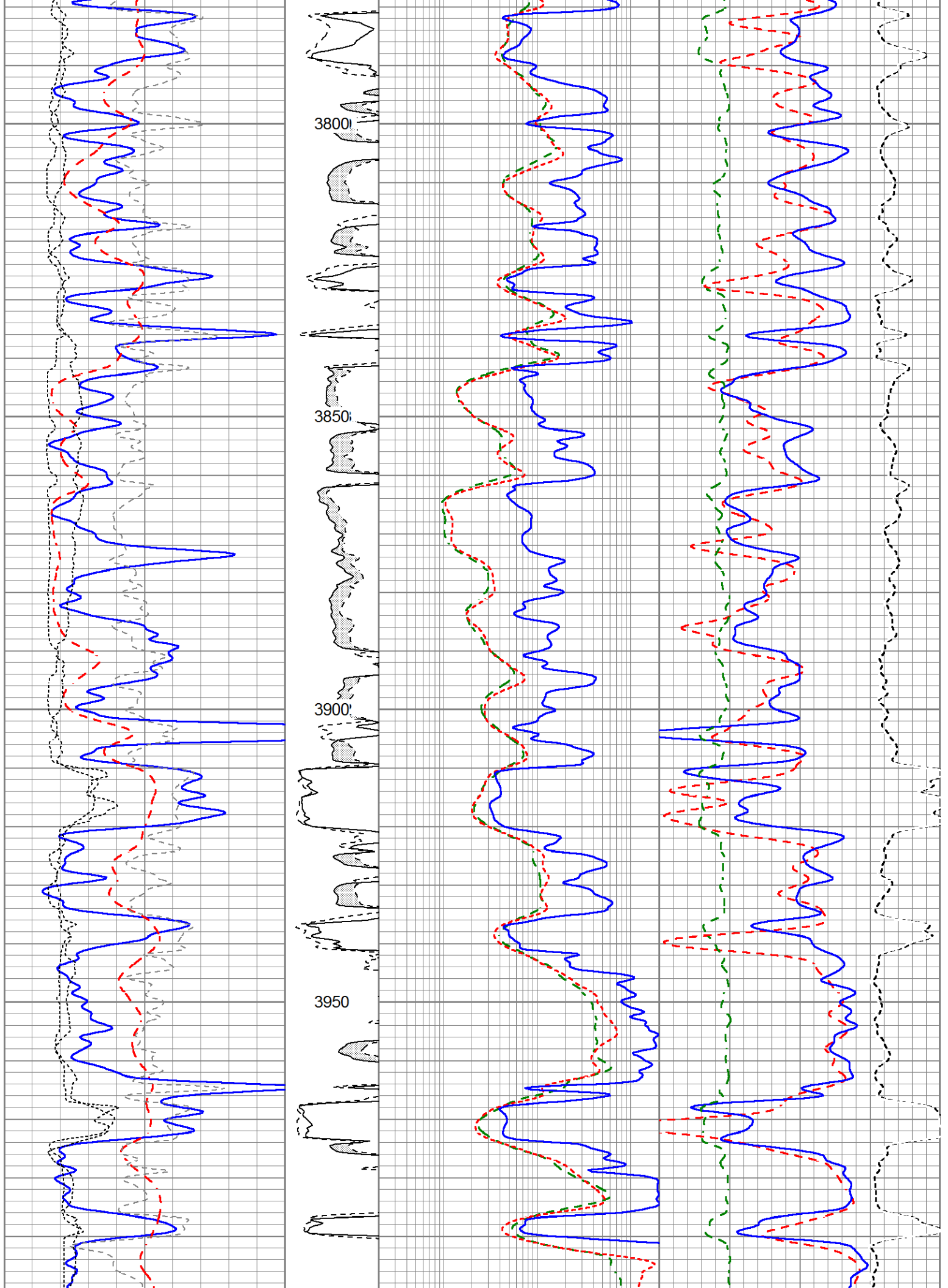
Comments

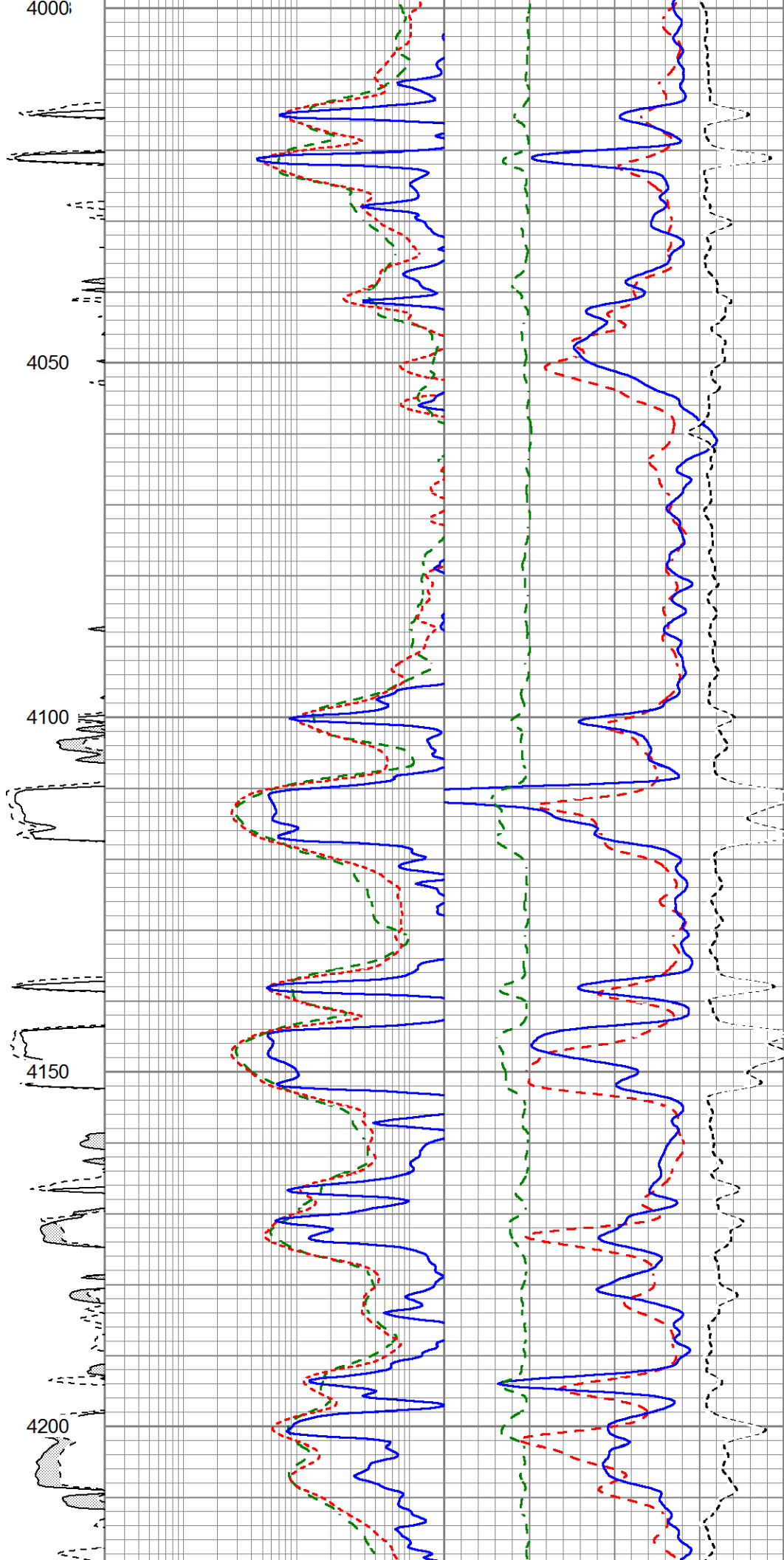
THANK YOU FOR USING ELI WIRELINE SERVICES, HAYS, KS. (785) 628-6395
DIRECTIONS
DIGHTON, KS. - 5 NORTH TO RD. 200 - 1 EAST - CURVE NORTH 1/2 MILE
WEST INTO

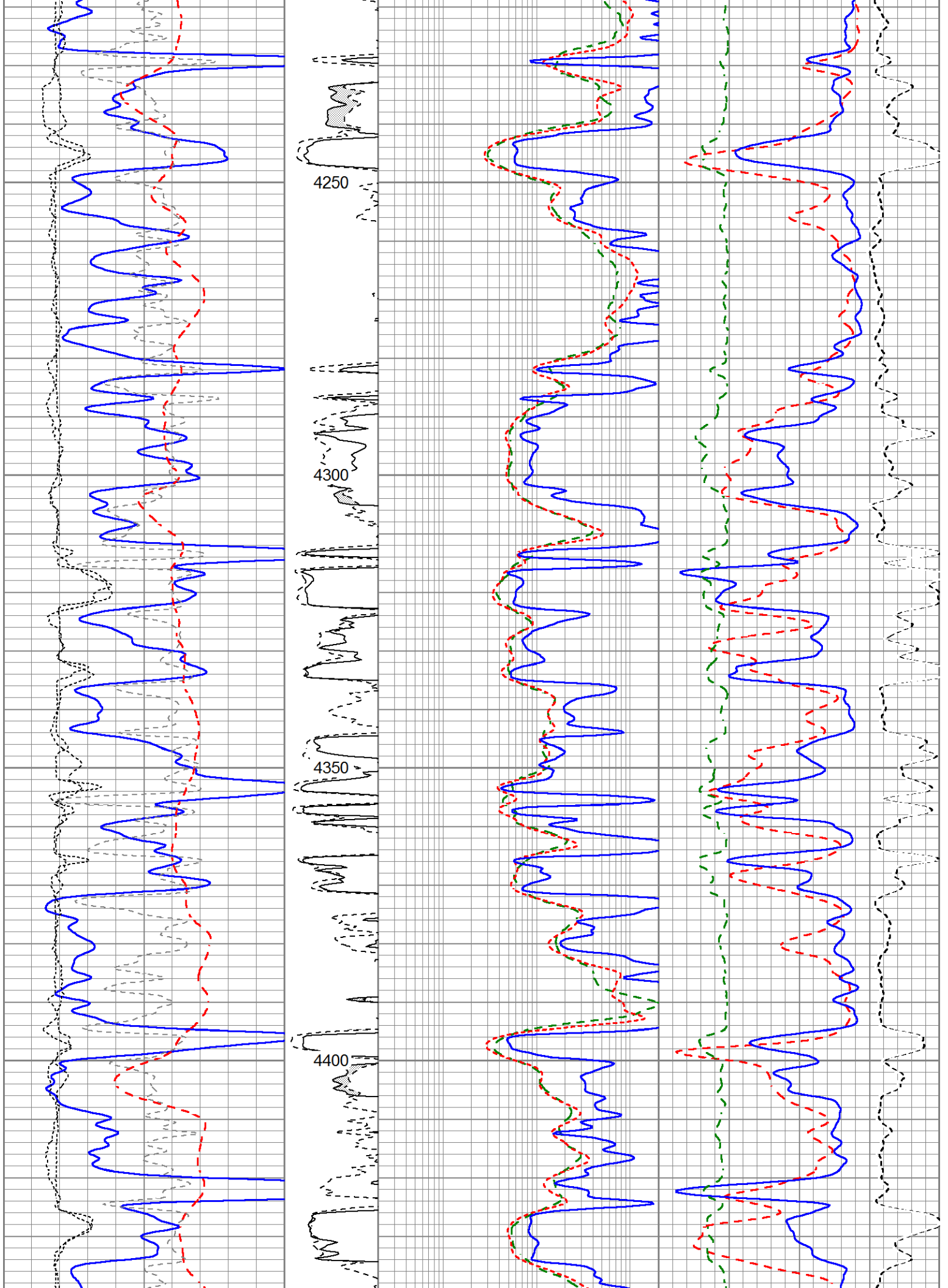
Database File 5857pe.db
Dataset Pathname passM
Presentation Format obrcompcol
Dataset Creation Sun Sep 26 13:33:12 2021
Charted by Depth in Feet scaled 1:240

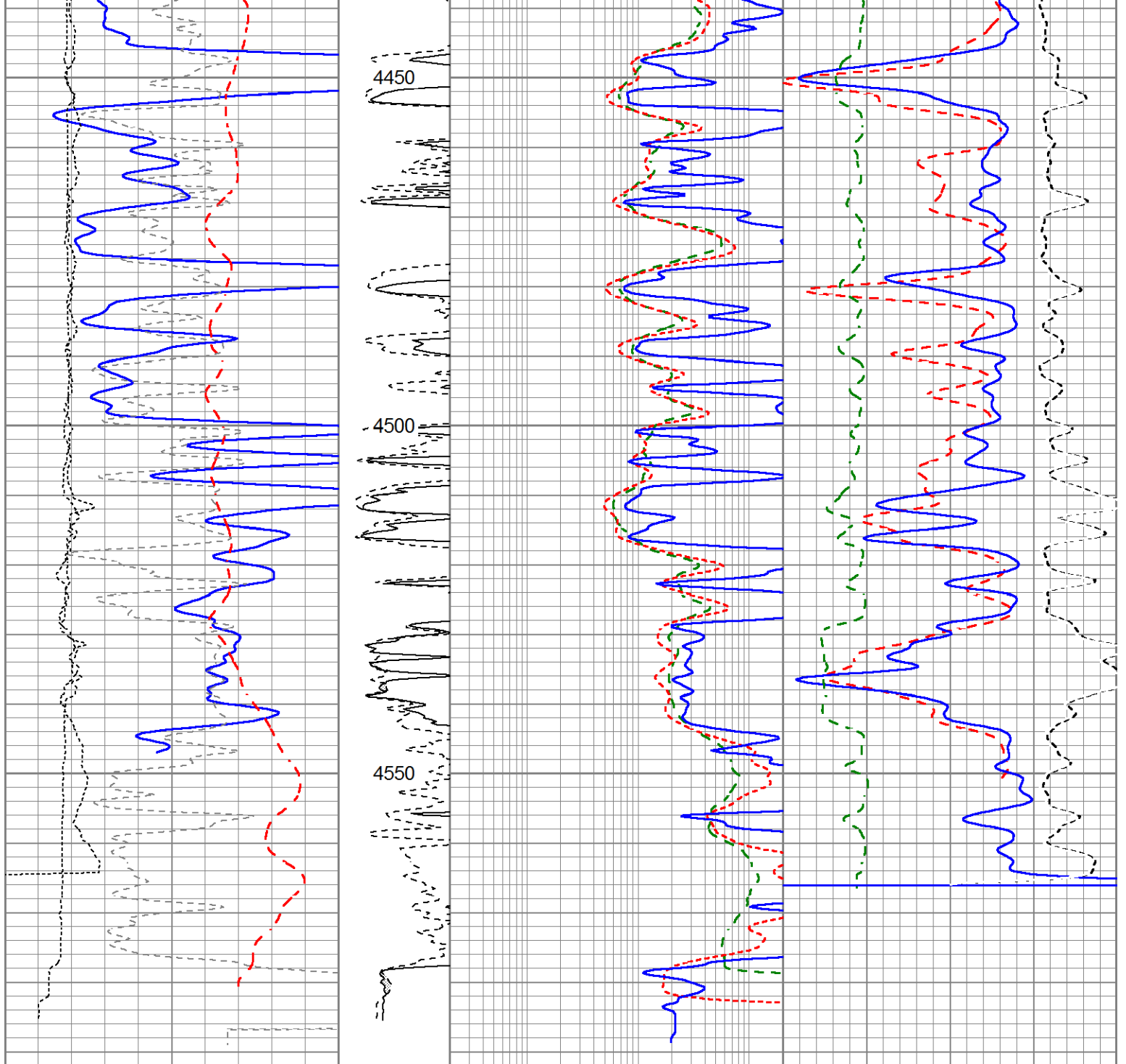
0	Gamma Ray (GAPI)	150	MEL15	0.2	Deep Resistivity (Ohm-m)	200	30	CN Porosity (pu)	-10
-100	SP (mV)	100	(Ohm-m)	0.2	Medium Resistivity (Ohm-m)	200	30	Density Porosity (pu)	-10
-200	RxoRt	100	0	20	0.2	Shallow Resistivity (Ohm-m)	200	0	20
6	DCAL (in)	16	MEL20						
6	MELCAL (in)	16	(Ohm-m)						
			0	20					
			TBHV (ft3)						
			ABHV (ft3)						
								RHOC	
								-0.25 (g/cc)	0.25











0	Gamma Ray (GAPI)	150	MEL15	0.2	Deep Resistivity (Ohm-m)	200	30	CN Porosity (pu)	-10	
-100	SP (mV)	100	(Ohm-m)	0.2	Medium Resistivity (Ohm-m)	200	30	Density Porosity (pu)	-10	
-200	RxoRt	100	0	20	0.2	Shallow Resistivity (Ohm-m)	200	0	PE	20
6	DCAL (in)	16	MEL20						RHOC	
6	MELCAL (in)	16	(Ohm-m)						-0.25 (g/cc)	0.25
			0	20						
			TBHV (ft3)							
			ABHV (ft3)							