



DUAL  
INDUCTION  
LOG

Company SHAKESPEARE OIL COMPANY, INC.

Well TERRY #1-19

Field WALNUT FORK SOUTHEAST

County LANE State KANSAS

Location: API #: 15-101-22658-0000

1910' FSL & 1450' FEL  
NE SE NW SE

SEC 19 TWP 17S RGE 28W

Permanent Datum GROUND LEVEL Elevation 2738

Log Measured From KELLY BUSHING 10' A.G.L.

Other Services  
CDL/CNL/PE  
MEL

Elevation  
K.B. 2748  
D.F. 2746  
G.L. 2738

Drilling Measured From KELLY BUSHING

Date 9/26/21

Run Number ONE

Depth Driller 4580

Depth Logger 4584

Bottom Logged Interval 4582

Top Log Interval 00

Casing Driller 8 5/8" @ 266

Casing Logger 266

Bit Size 7 7/8

Type Fluid in Hole CHEMICAL MUD

Density / Viscosity 9.2/58

pH / Fluid Loss 10.5/8.0

Source of Sample FLOWLINE

Rm @ Meas. Temp 1.10 @ 75F

Rmf @ Meas. Temp 0.82 @ 75F

Rmc @ Meas. Temp 1.32 @ 75F

Source of Rmf / Rmc MEASUREMENT

Rm @ BHT 0.68 @ 121F

Time Circulation Stopped 2 HOURS

Time Logger on Bottom ////

Maximum Recorded Temperature 121F

Equipment Number 3802

Location HAYS, KANSAS

Recorded By JASON CAPPELLUCCI

Witnessed By VERN SCHRAG

<<< Fold Here >>>

All interpretations are opinions based on inferences from electrical or other measurements and we cannot and do not guarantee the accuracy or correctness of any interpretation, and we shall not, except in the case of gross or willful negligence on our part, be liable or responsible for any loss, costs, damages, or expenses incurred or sustained by anyone resulting from any interpretation made by any of our officers, agents or employees. These interpretations are also subject to our general terms and conditions set out in our current Price Schedule.

Comments

THANK YOU FOR USING ELI WIRELINE SERVICES, HAYS, KS. ( 785 ) 628-6395  
DIRECTIONS  
DIGHTON, KS. - 5 NORTH TO RD. 200 - 1 EAST - CURVE NORTH 1/2 MILE  
WEST INTO

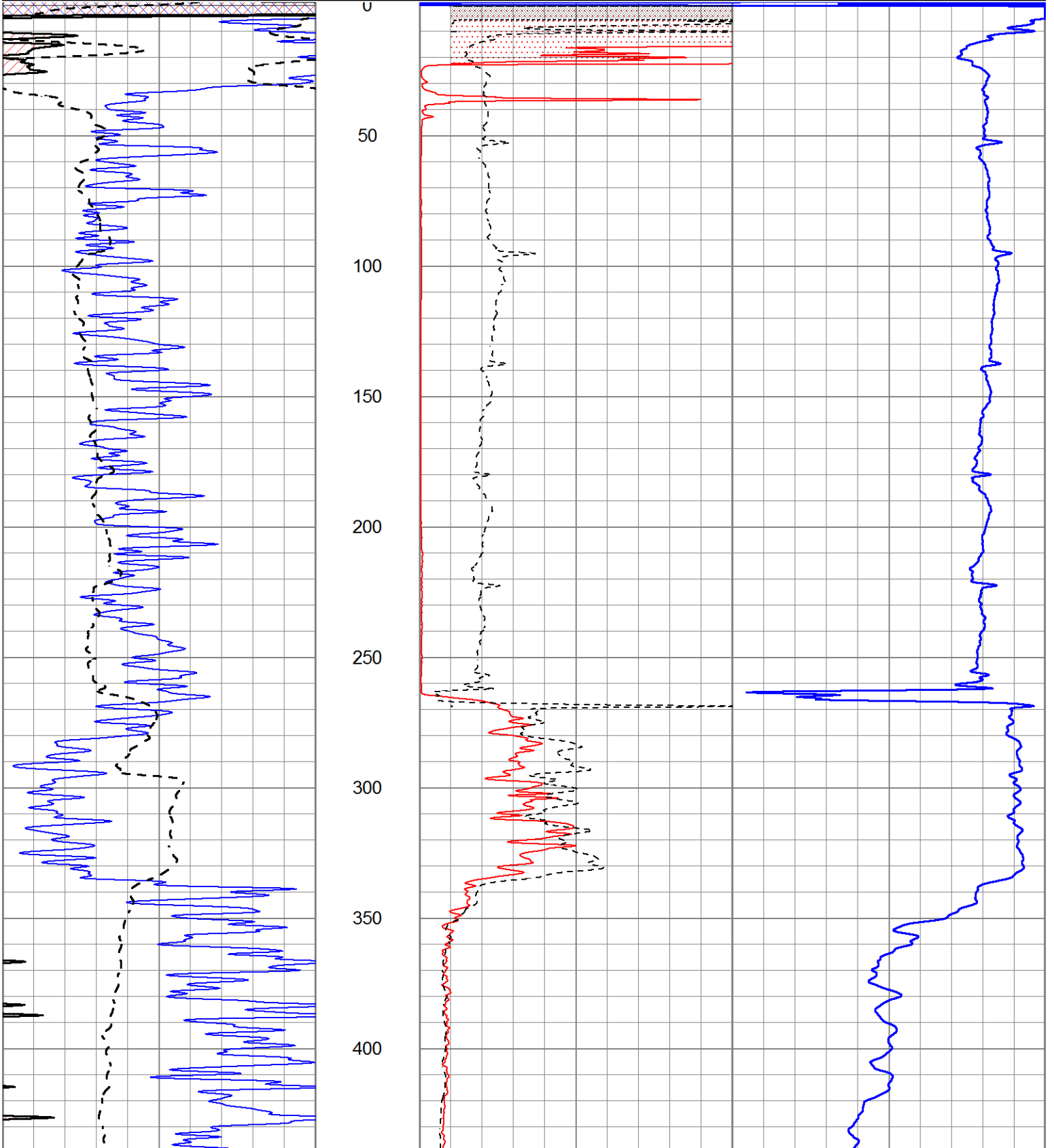


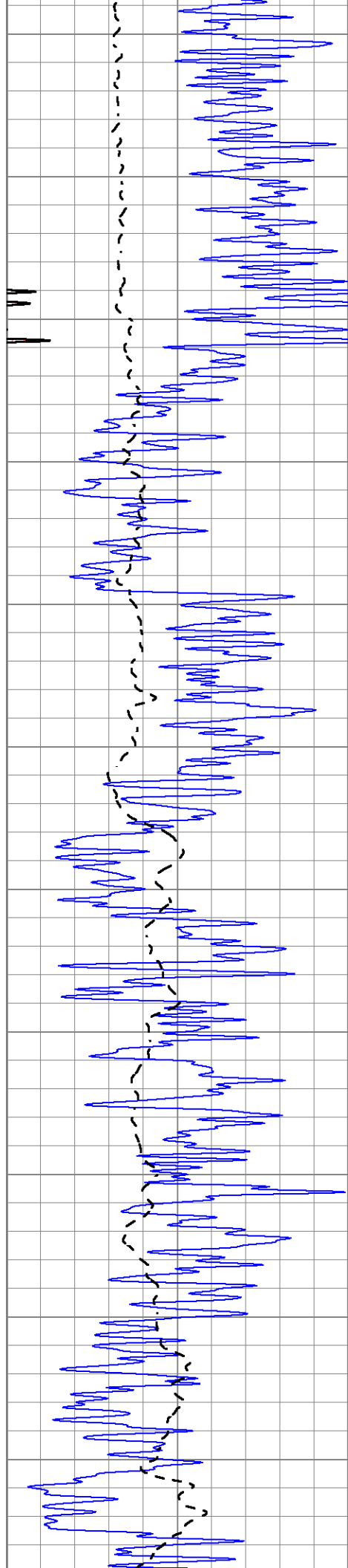
MAIN SECTION

Database File 5857pe.db  
 Dataset Pathname pass3.3  
 Presentation Format \_dil2  
 Dataset Creation Sun Sep 26 12:23:57 2021  
 Charted by Depth in Feet scaled 1:600

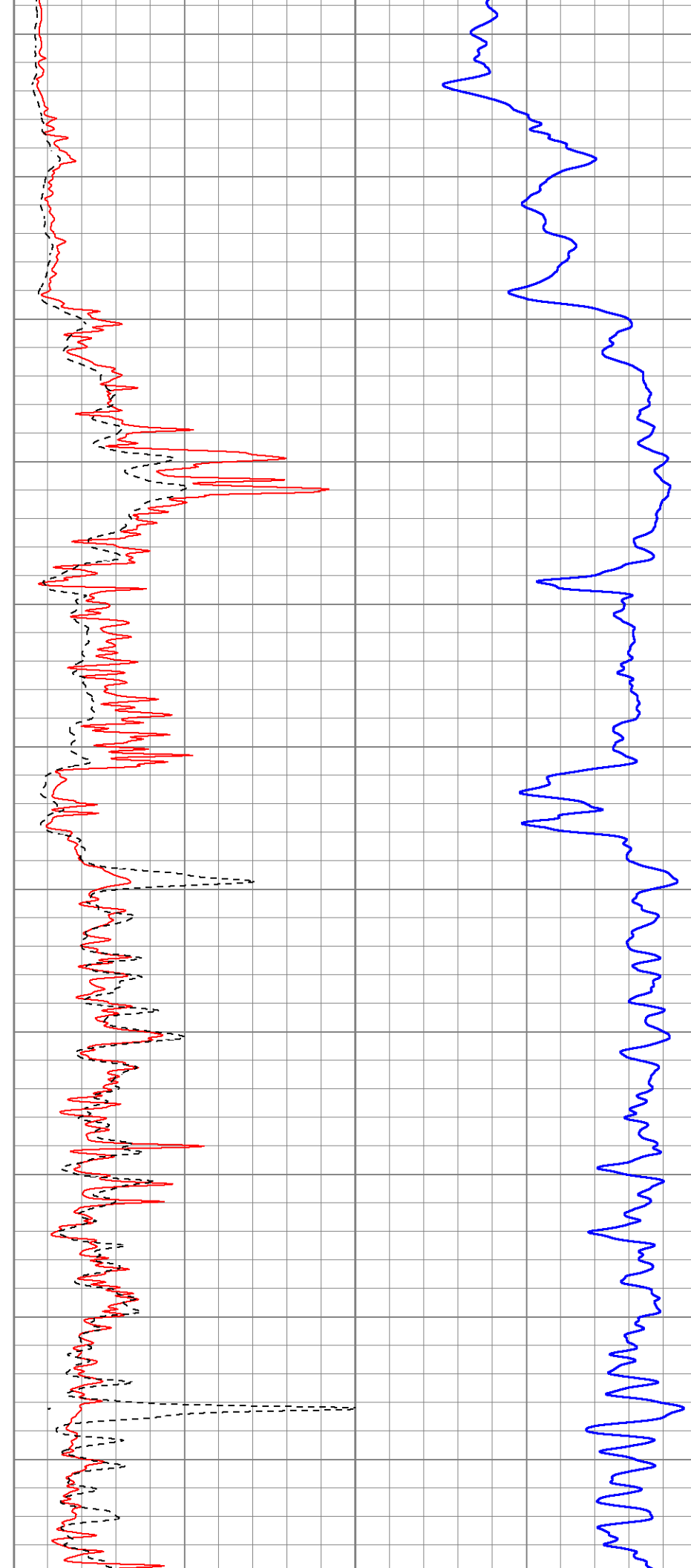
0	Gamma Ray (GAPI)	150
-100	SP (mV)	100

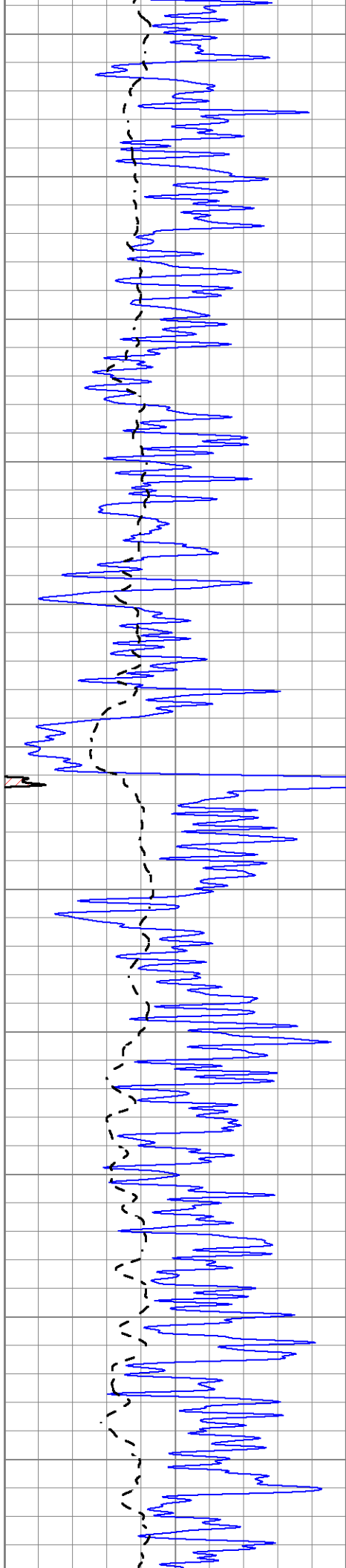
1000	CILD (mmho/m)	0
0	RLL3 (Ohm-m)	50
0	Deep Induction (Ohm-m)	50
50	RILD X10 (Ohm-m)	500
50	RLL3 X10 (Ohm-m)	500



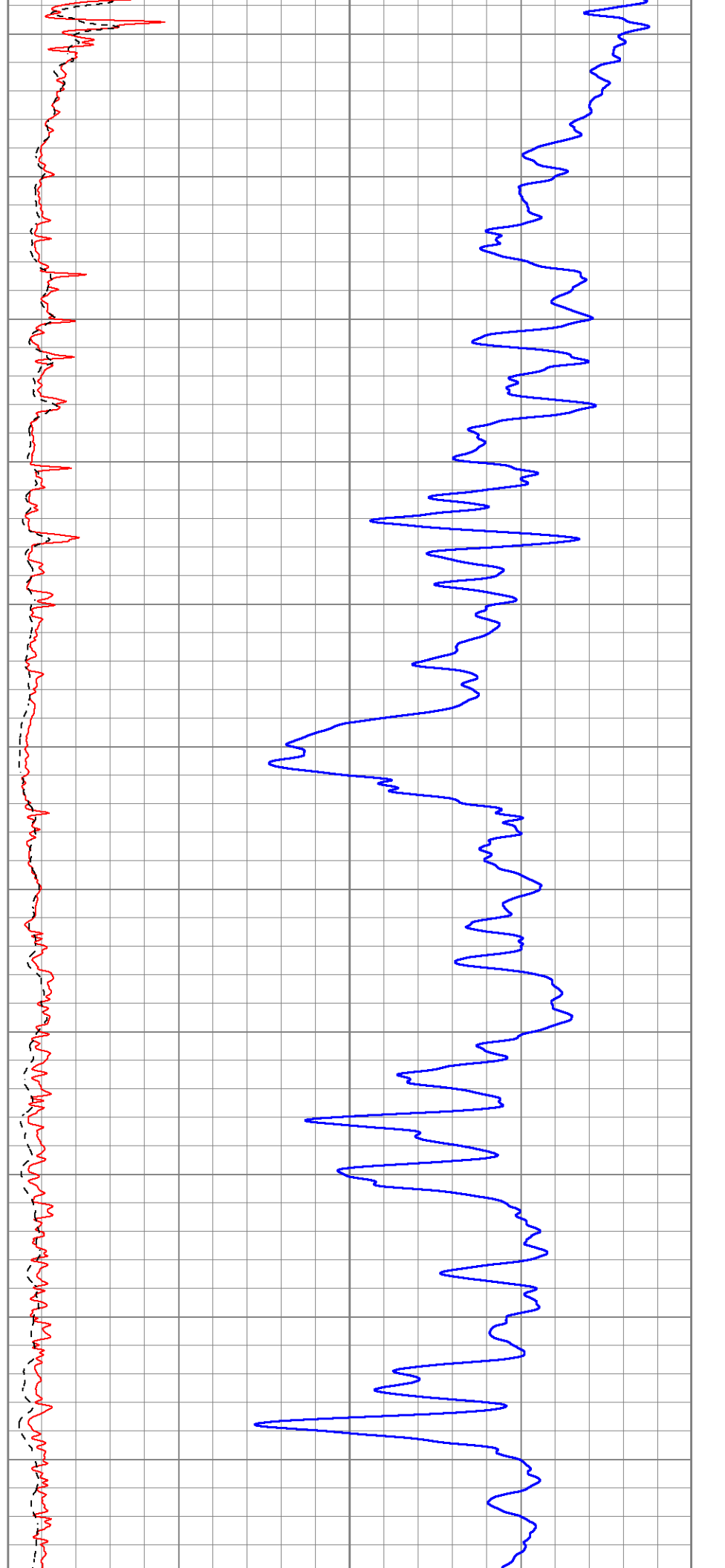


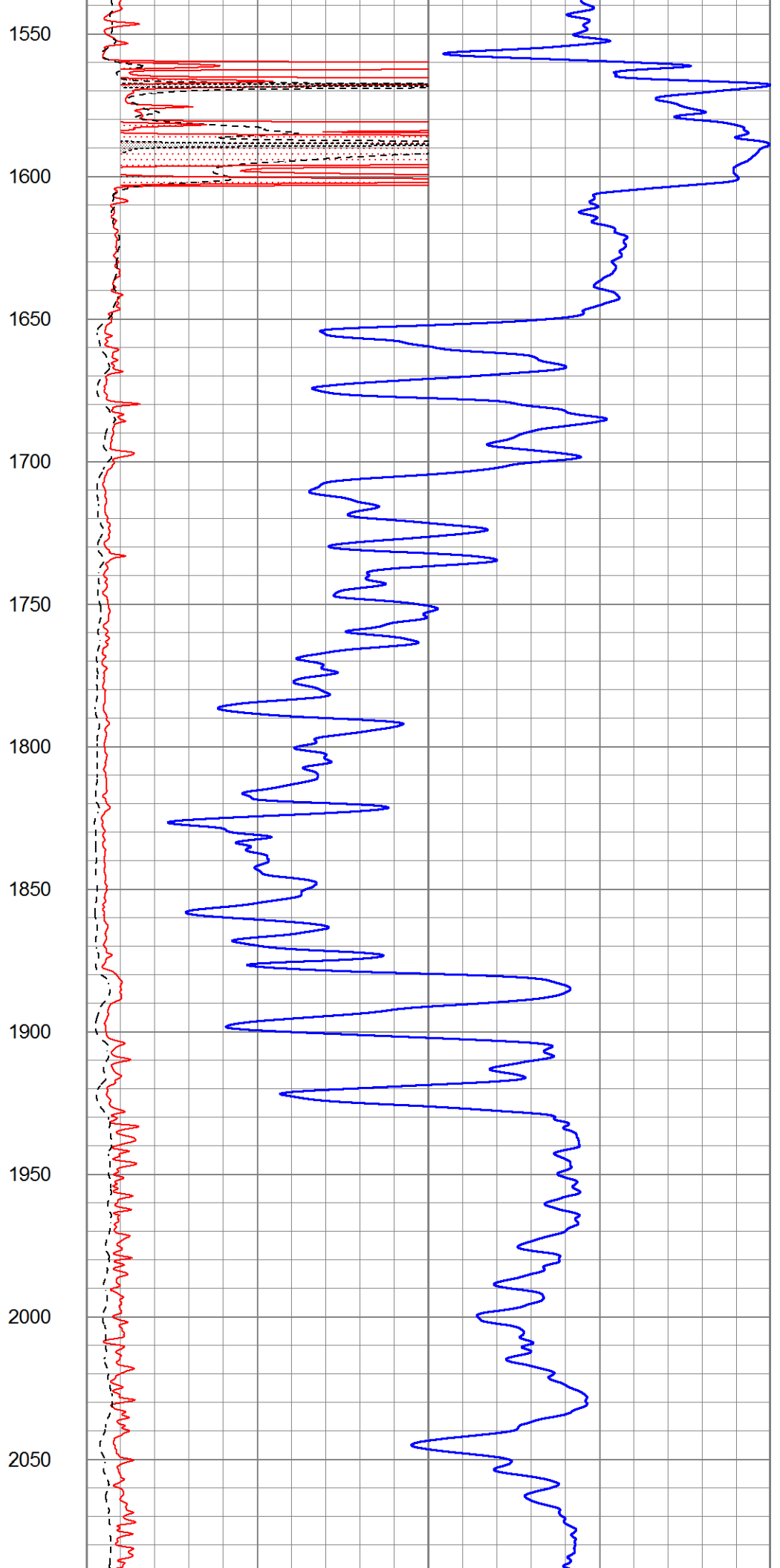
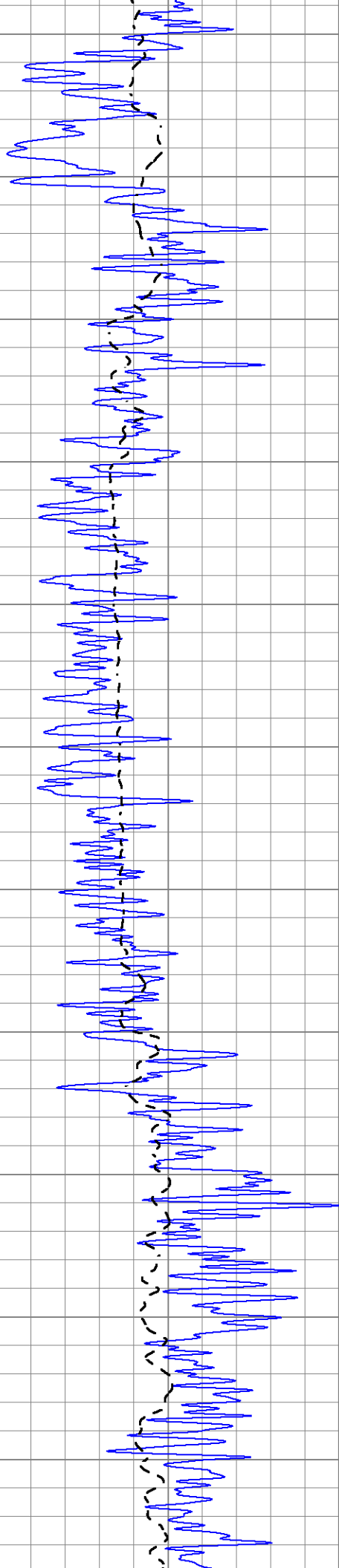
450  
500  
550  
600  
650  
700  
750  
800  
850  
900  
950

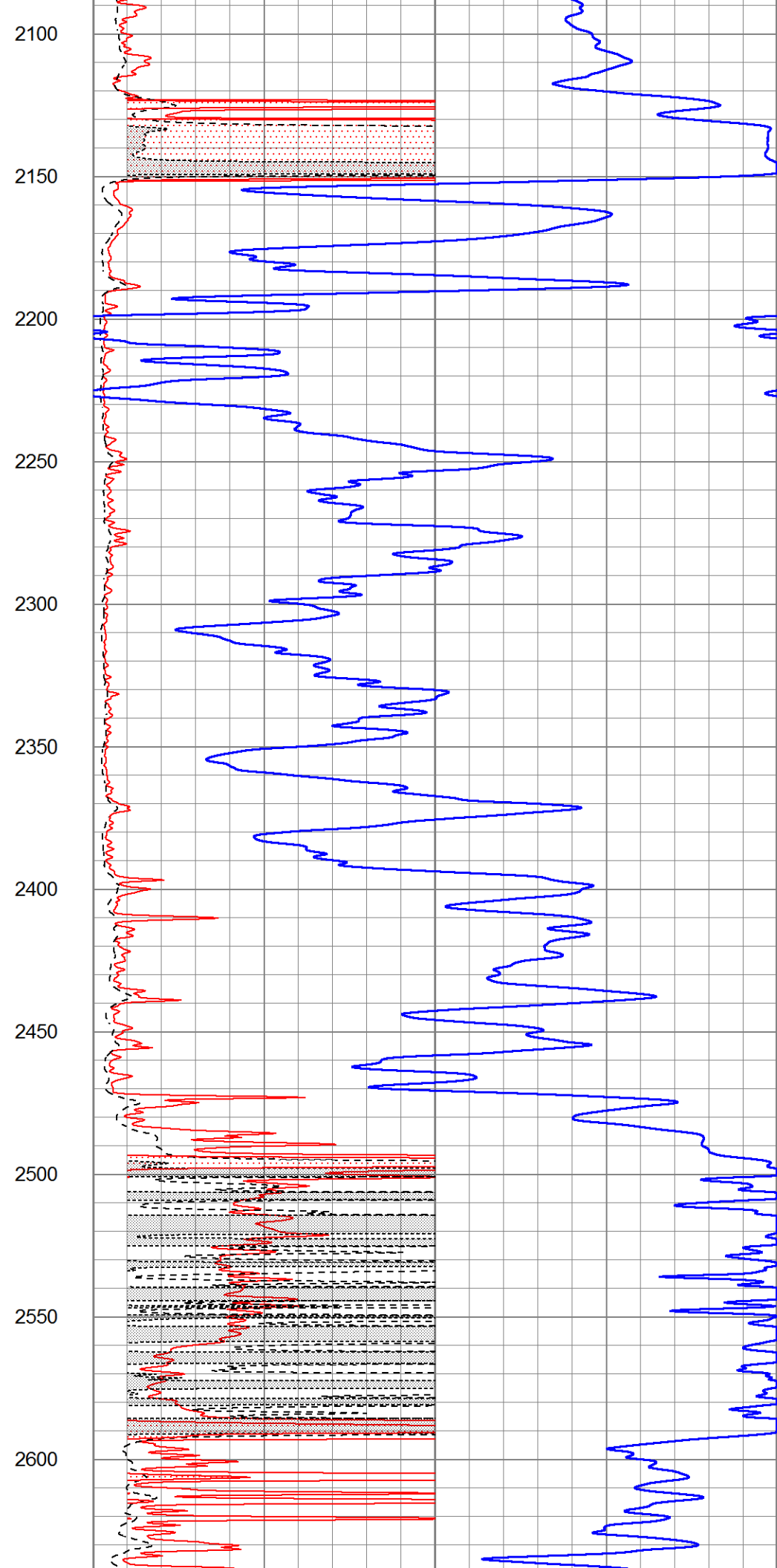
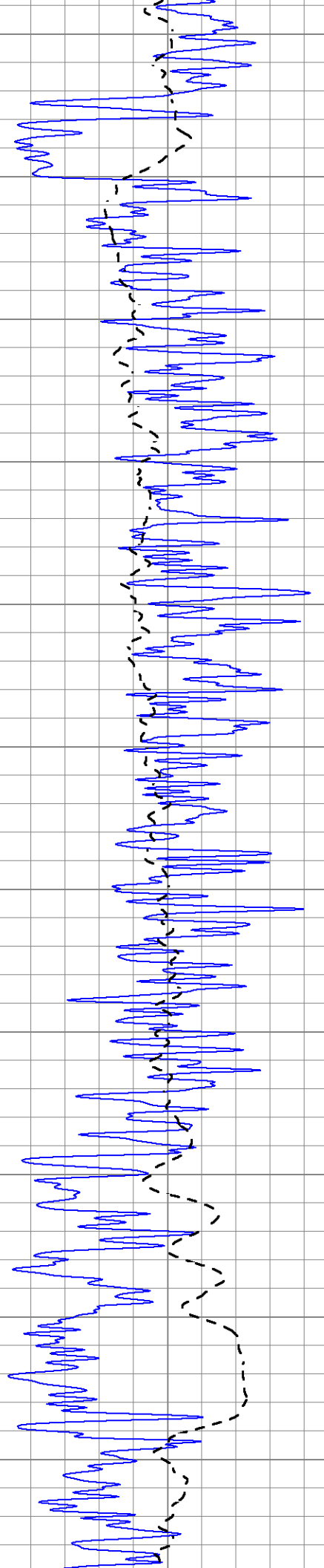


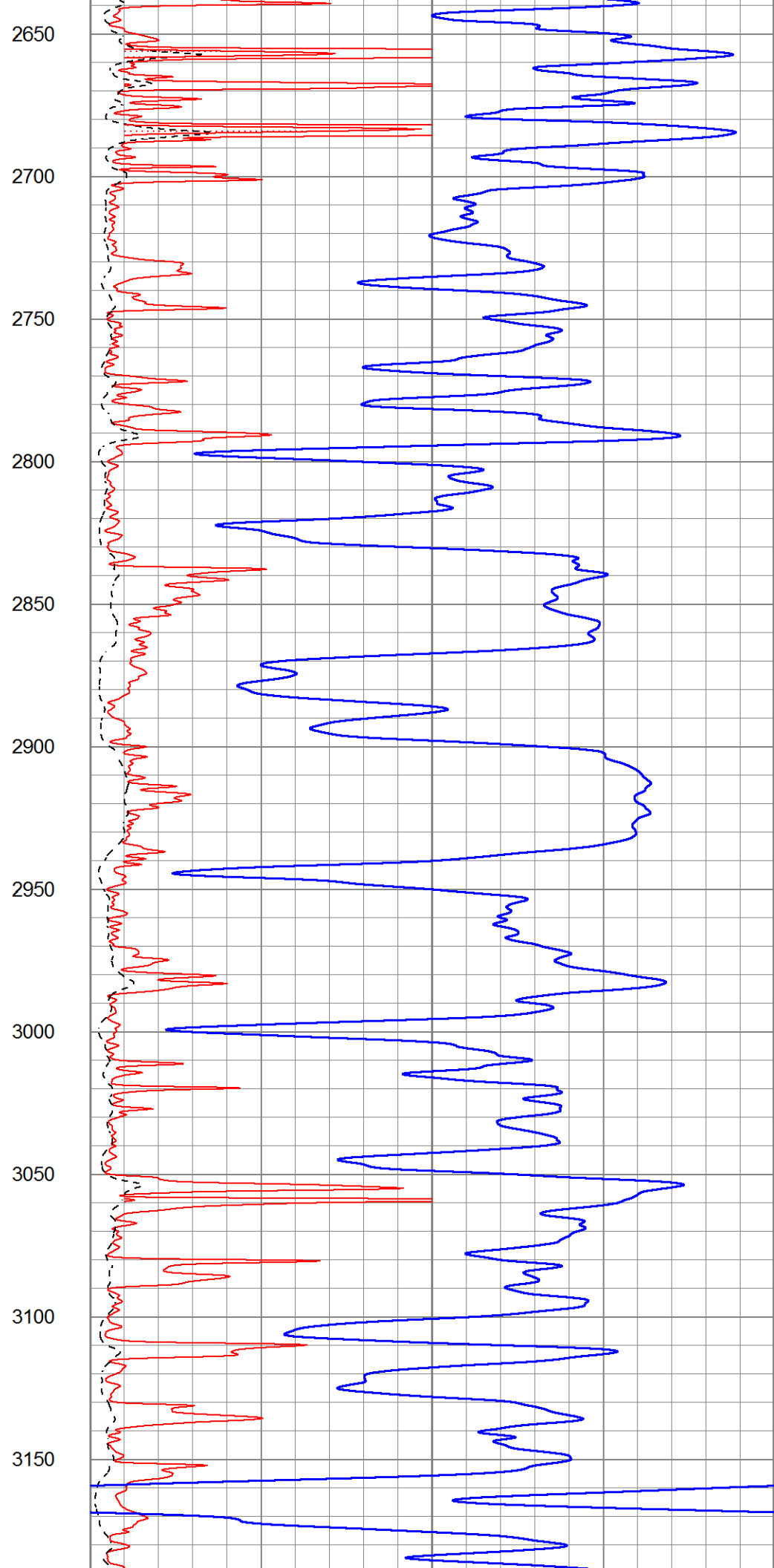
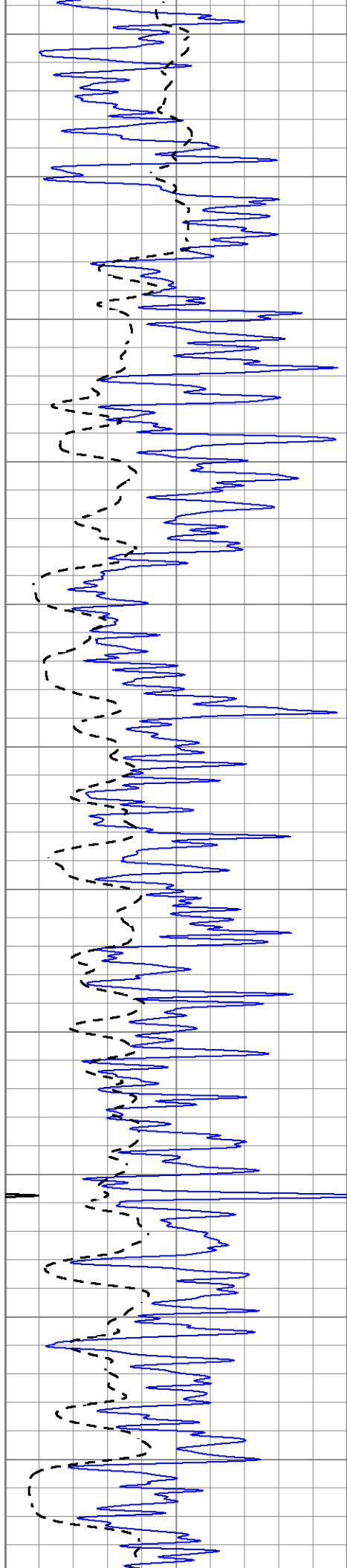


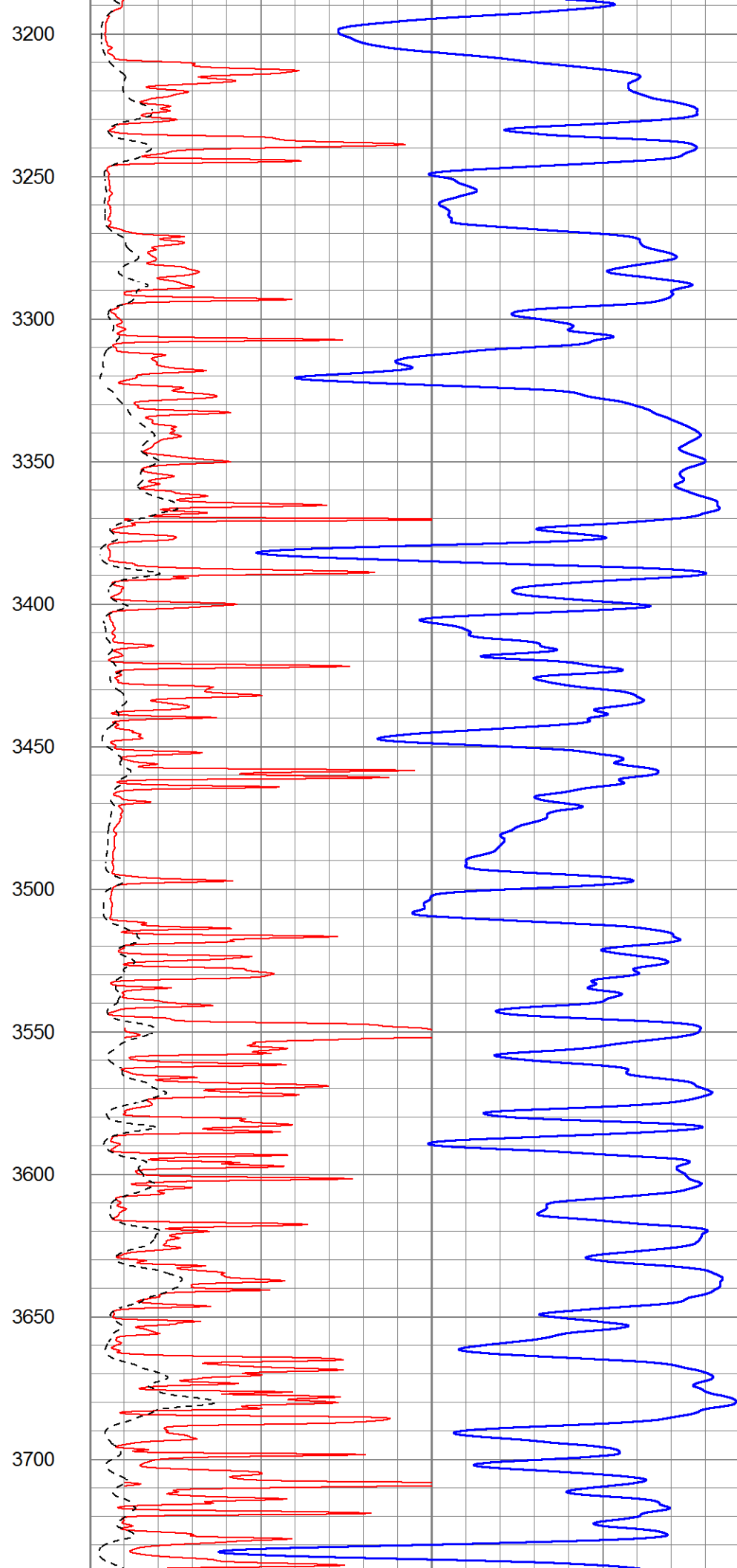
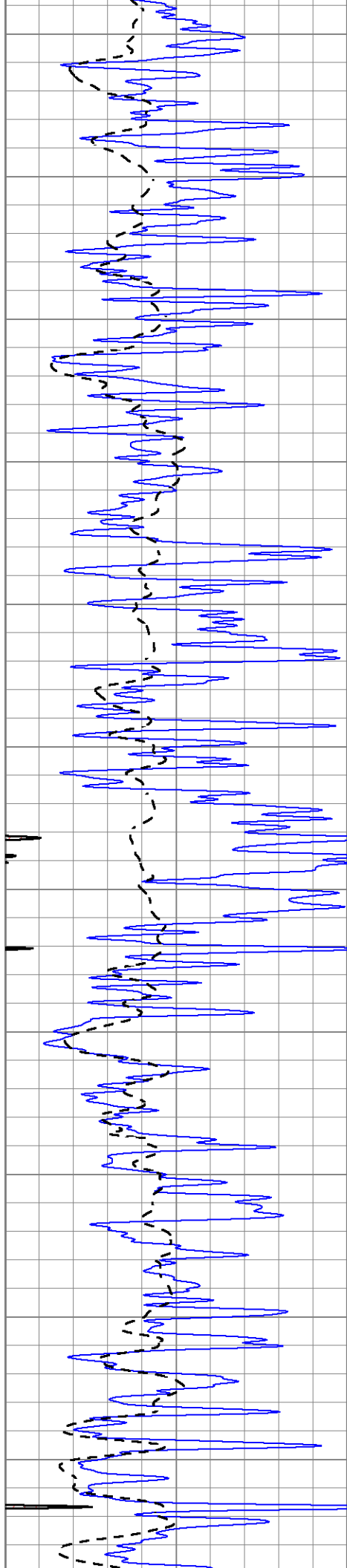
1000  
1050  
1100  
1150  
1200  
1250  
1300  
1350  
1400  
1450  
1500

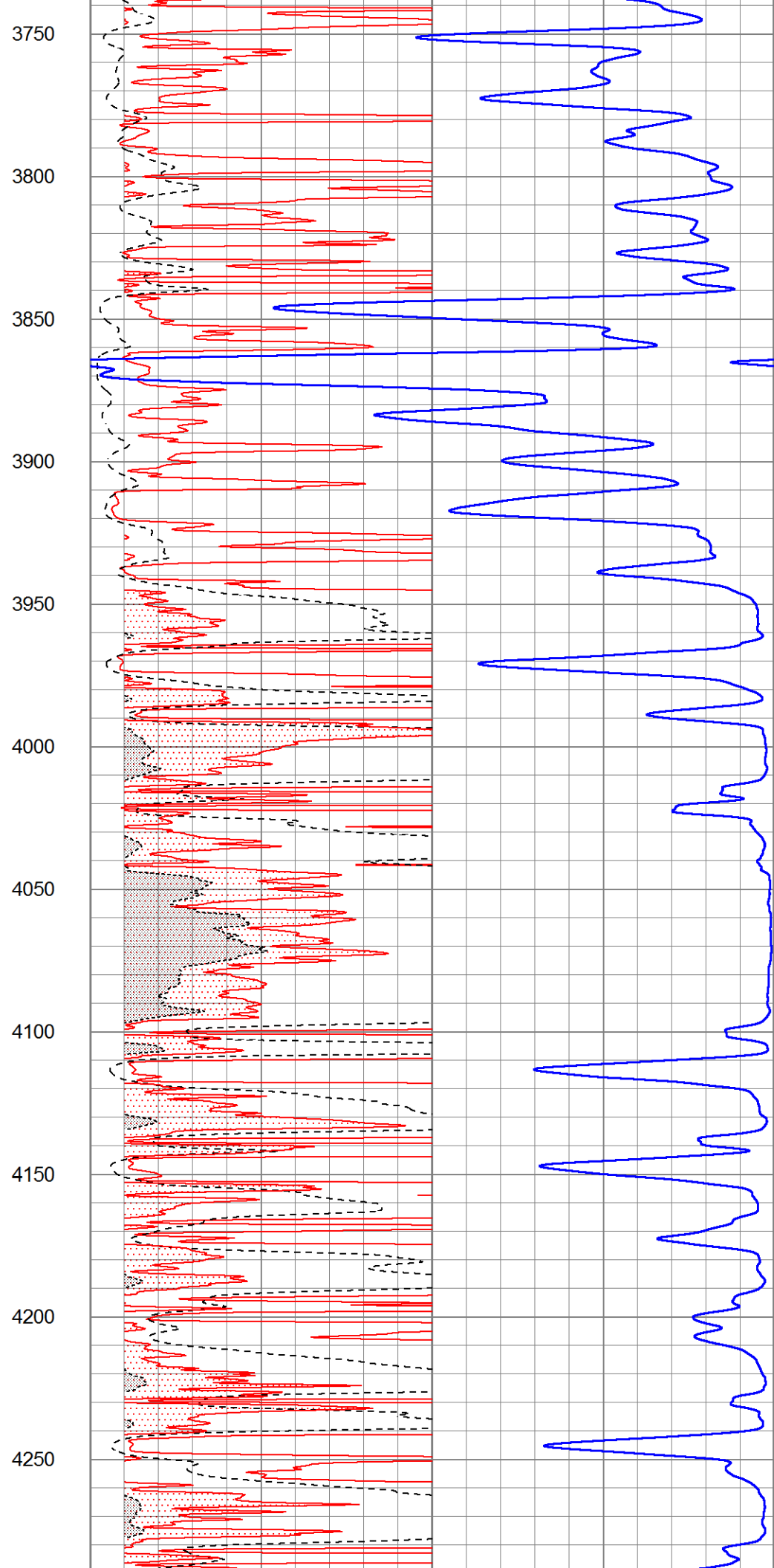
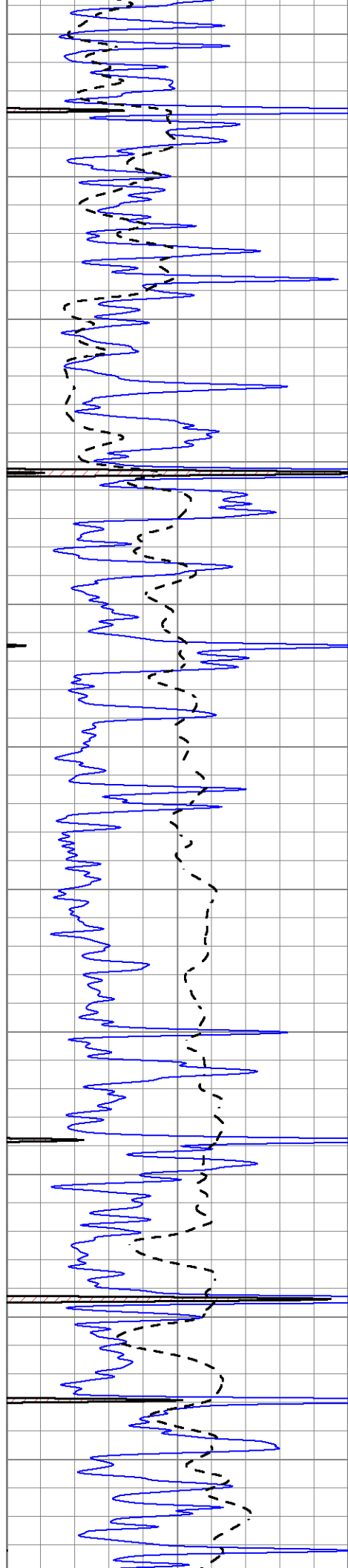


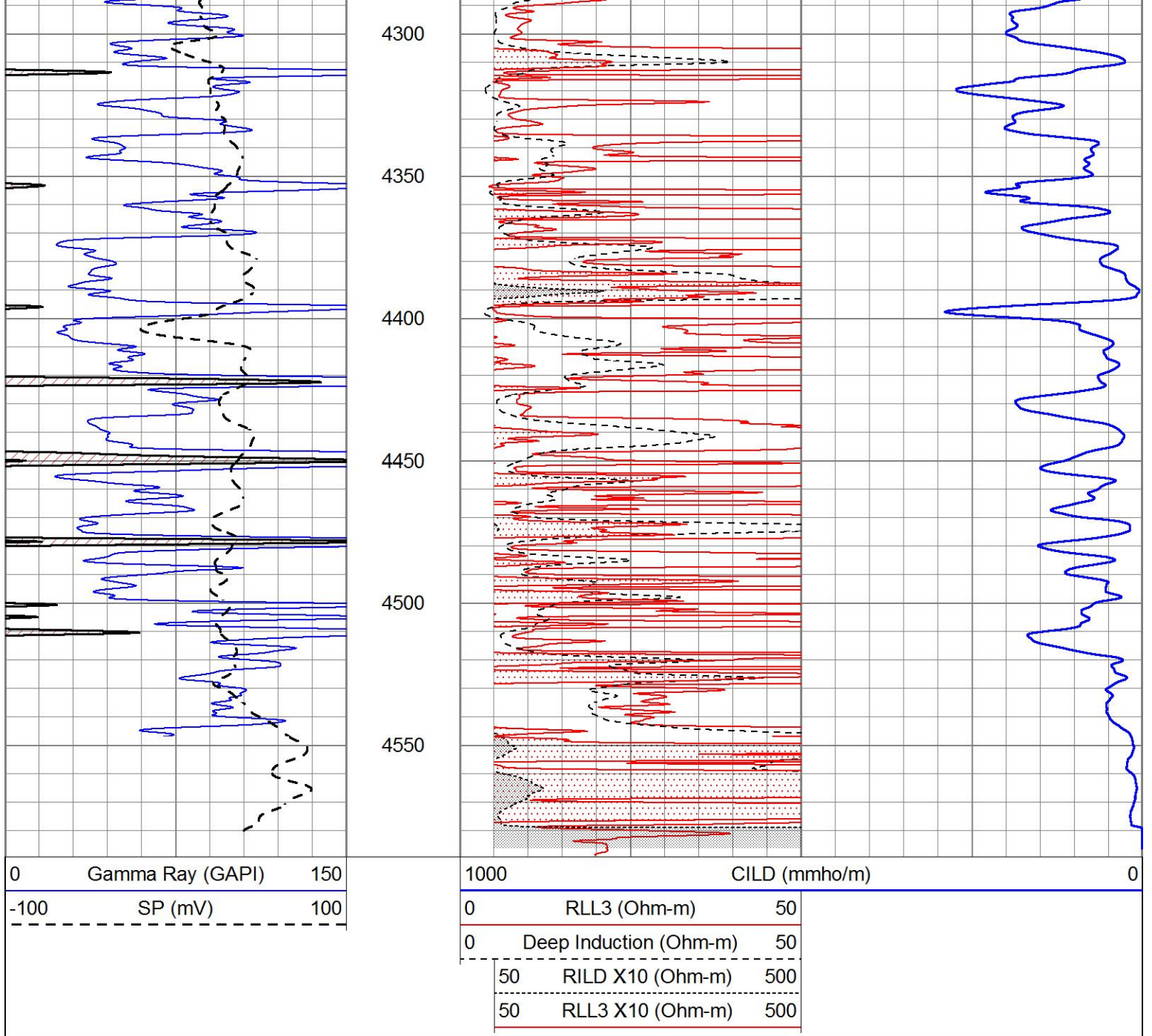








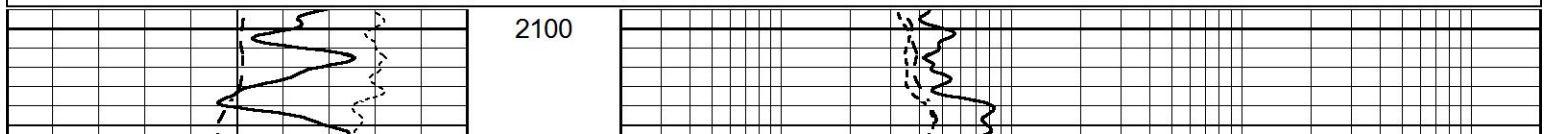


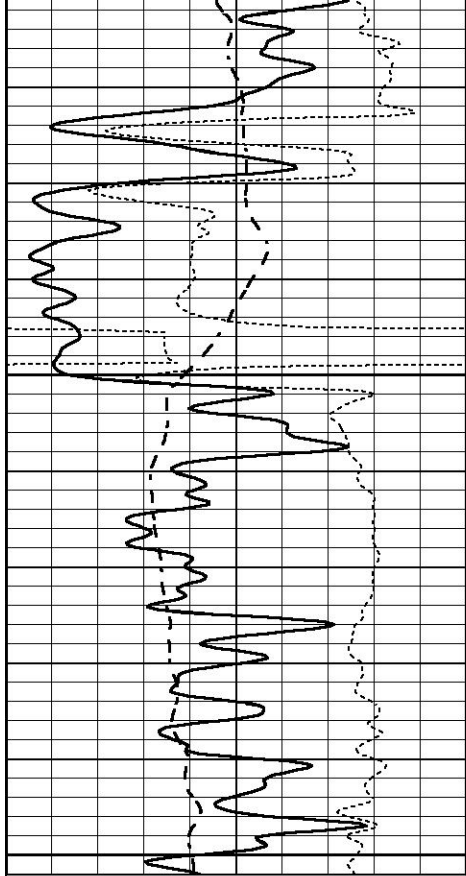


# ANHYDRITE

Database File 5857pe.db  
 Dataset Pathname pass3.2  
 Presentation Format \_dil  
 Dataset Creation Sun Sep 26 11:49:12 2021  
 Charted by Depth in Feet scaled 1:240

0	GAMMA RAY (GAPI)	150	0.2	SHALLOW GUARD (Ohm-m)	2000
-100	SP (mV)	100	0.2	MEDIUM INDUCTION (Ohm-m)	2000
-250	Rxo/Rt	50	0.2	DEEP INDUCTION (Ohm-m)	2000

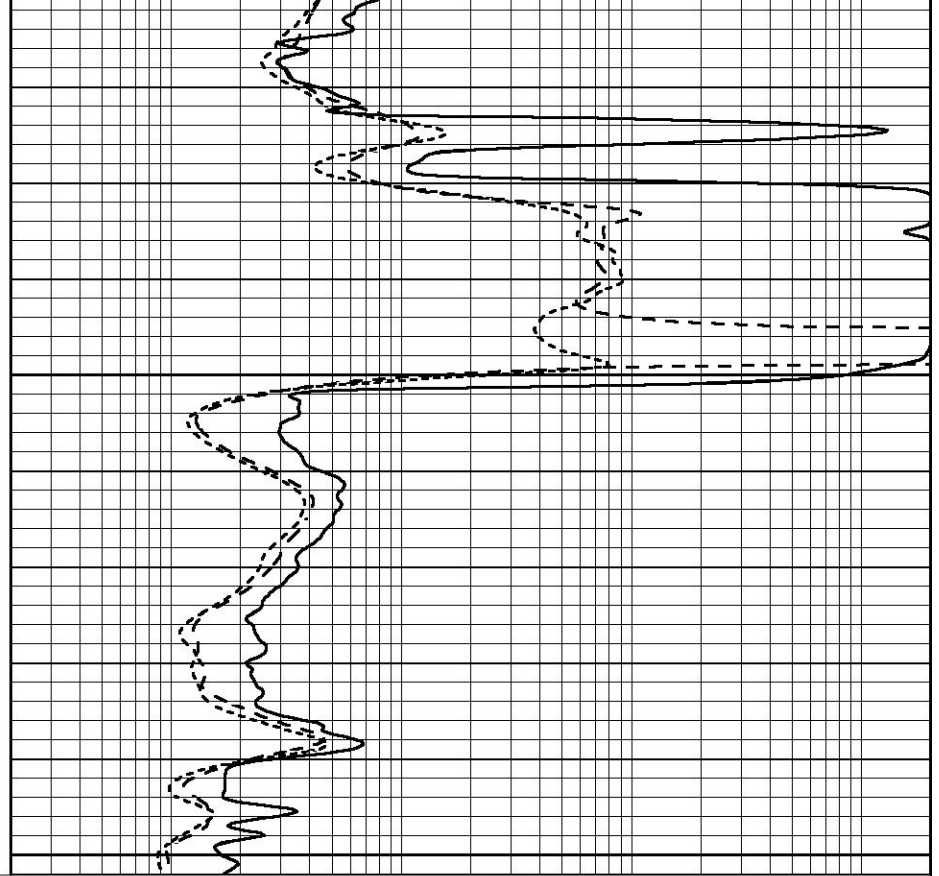




2150

2200

0	GAMMA RAY (GAPI)	150
-100	SP (mV)	100
-250	Rxo/Rt	50



0.2	SHALLOW GUARD (Ohm-m)	2000
0.2	MEDIUM INDUCTION (Ohm-m)	2000
0.2	DEEP INDUCTION (Ohm-m)	2000

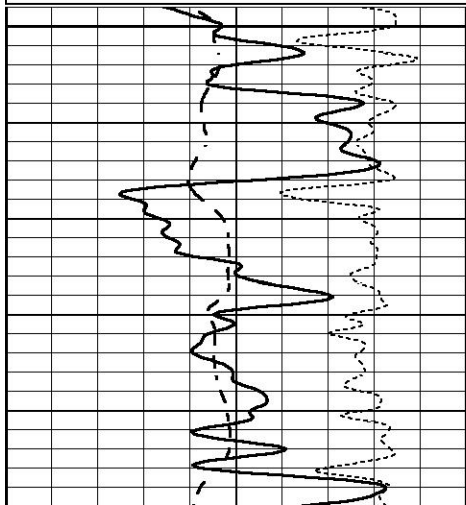


# MAIN SECTION

Database File 5857pe.db  
 Dataset Pathname pass3.1  
 Presentation Format \_dil  
 Dataset Creation Sun Sep 26 11:35:43 2021  
 Charted by Depth in Feet scaled 1:240

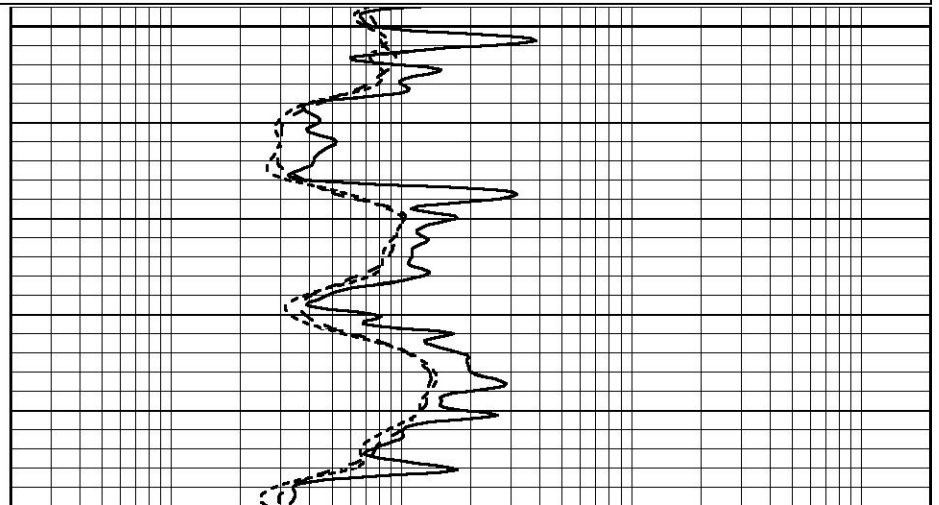
0	GAMMA RAY (GAPI)	150
-100	SP (mV)	100
-250	Rxo/Rt	50

0.2	SHALLOW GUARD (Ohm-m)	2000
0.2	MEDIUM INDUCTION (Ohm-m)	2000
0.2	DEEP INDUCTION (Ohm-m)	2000



3600

3650



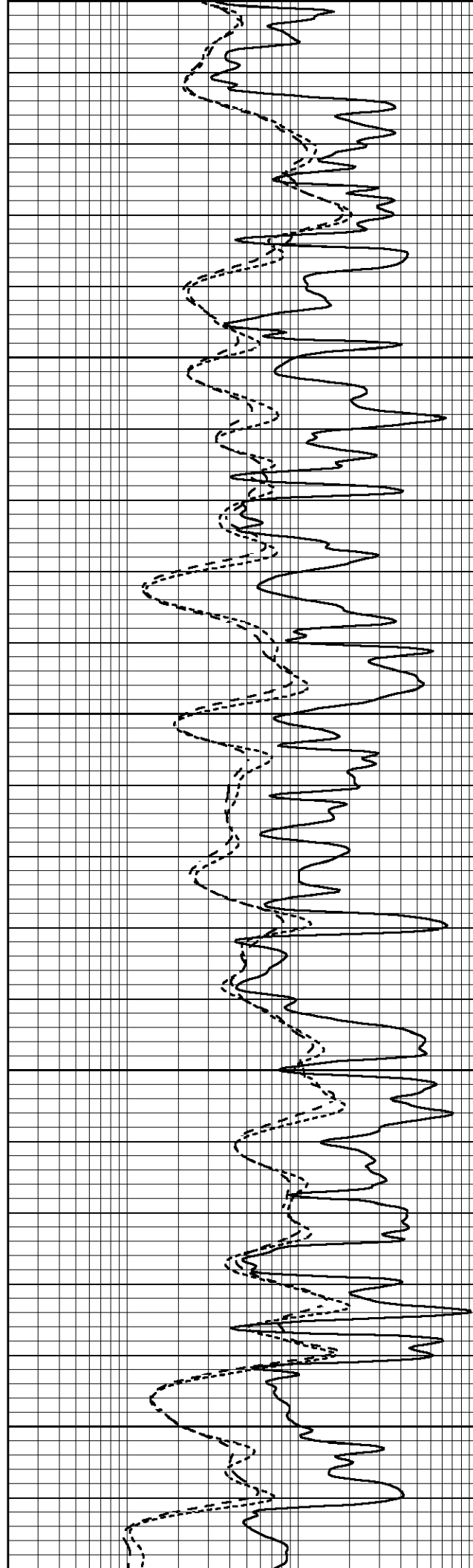
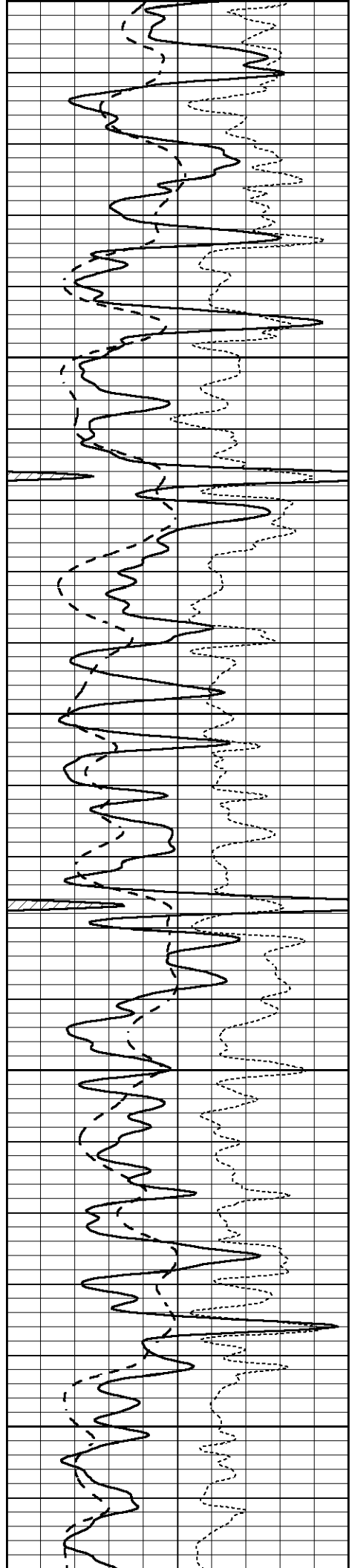
3650

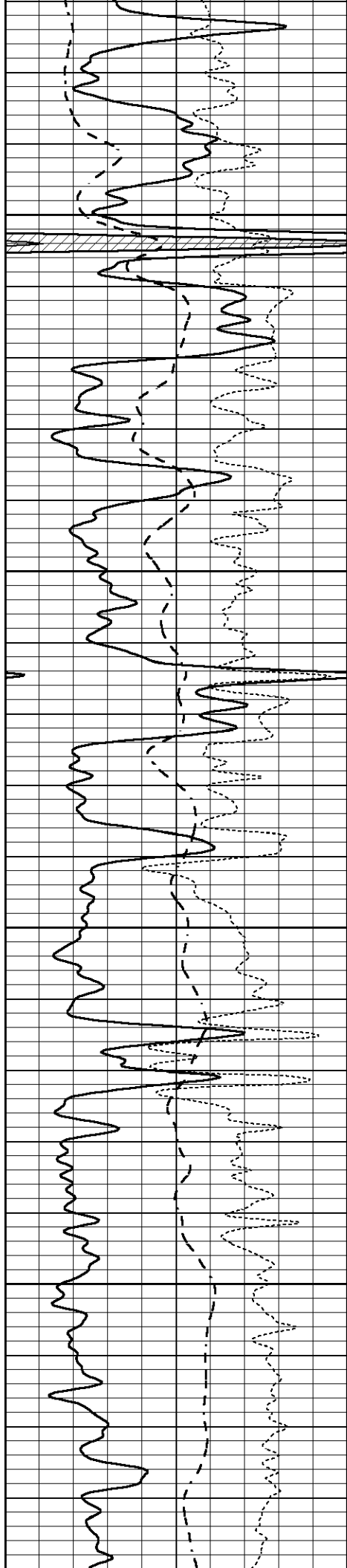
3700

3750

3800

3850



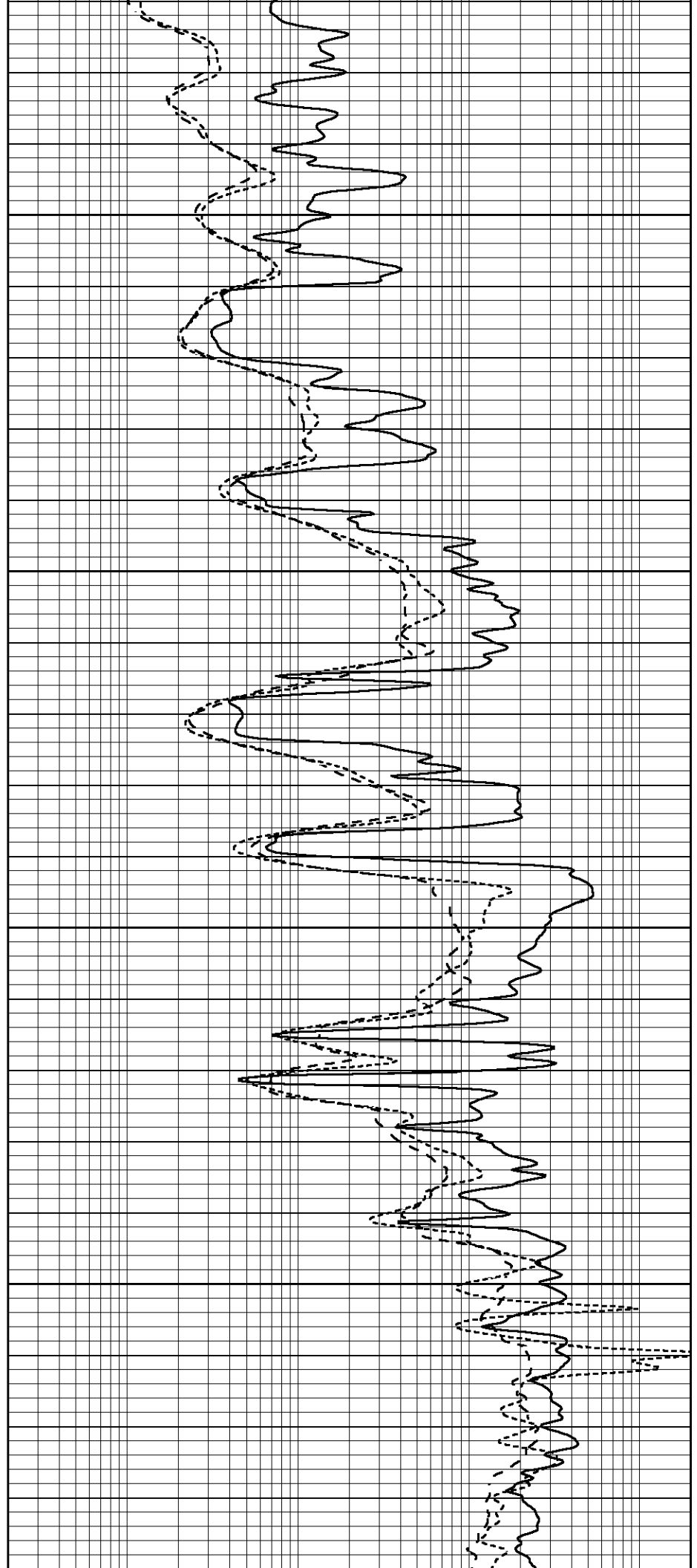


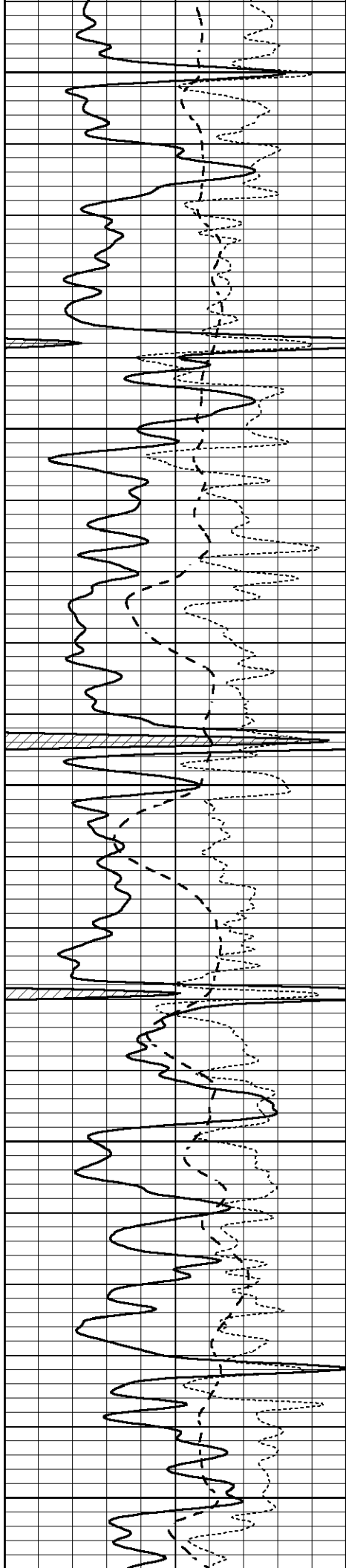
3900

3950

4000

4050





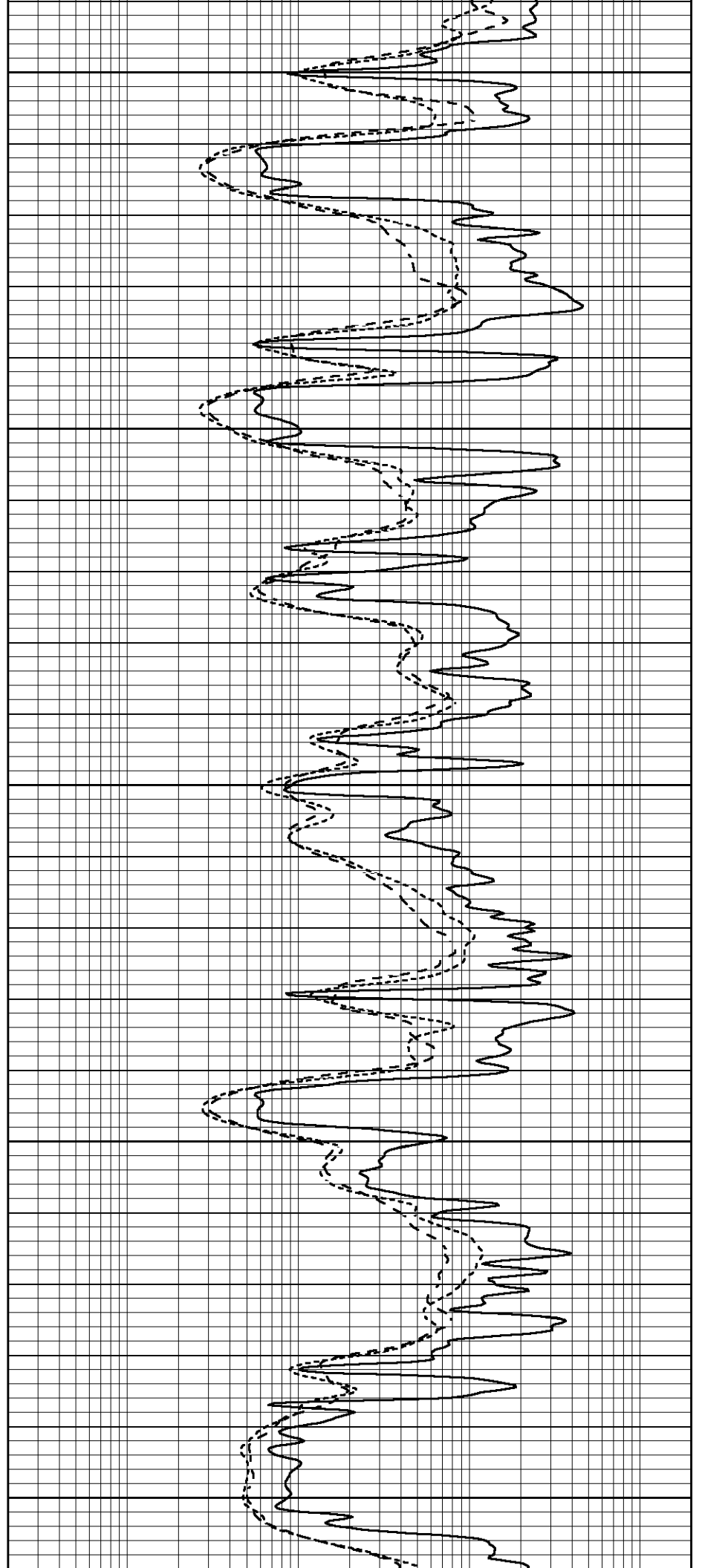
4100

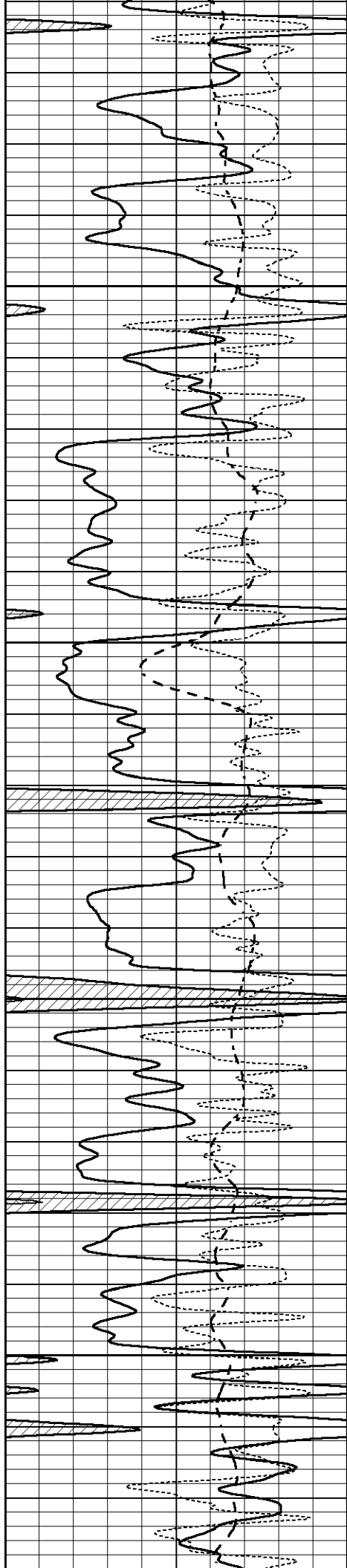
4150

4200

4250

4300



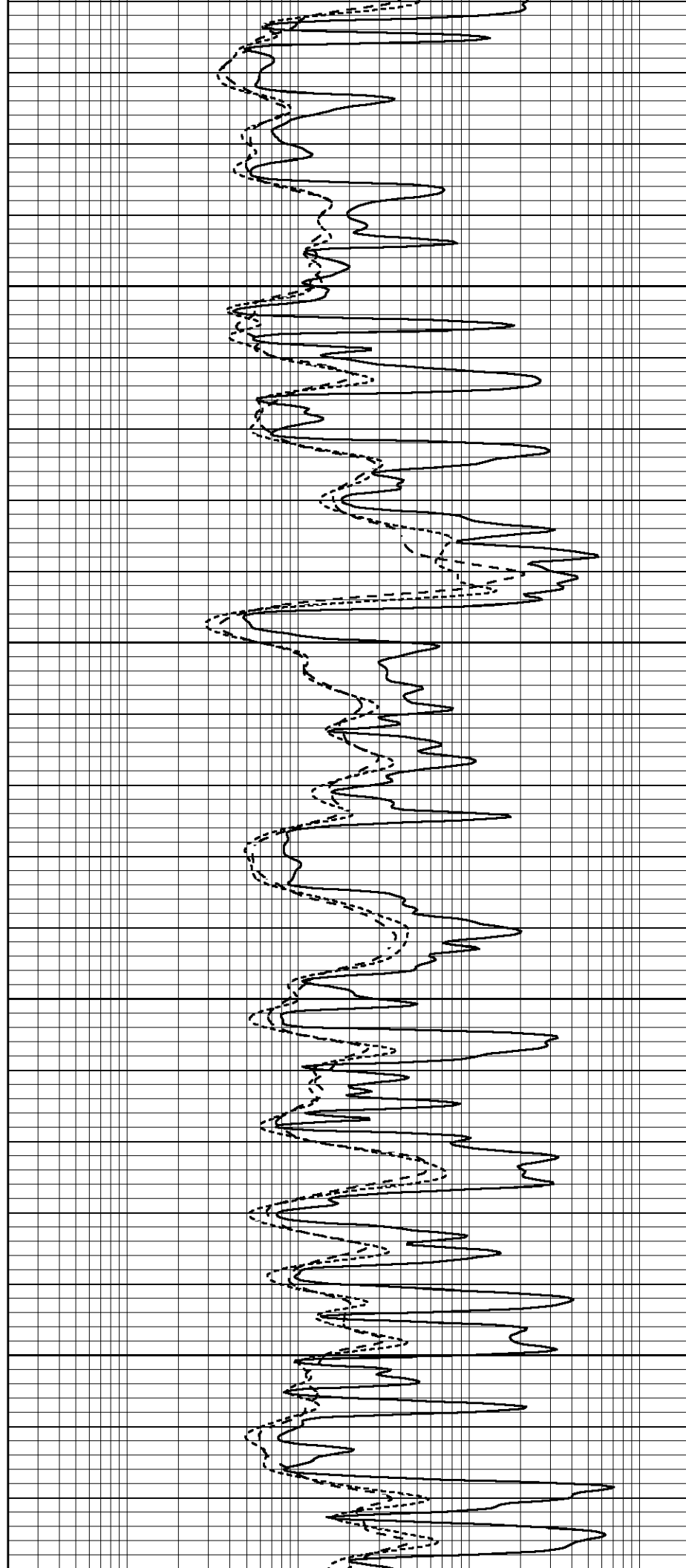


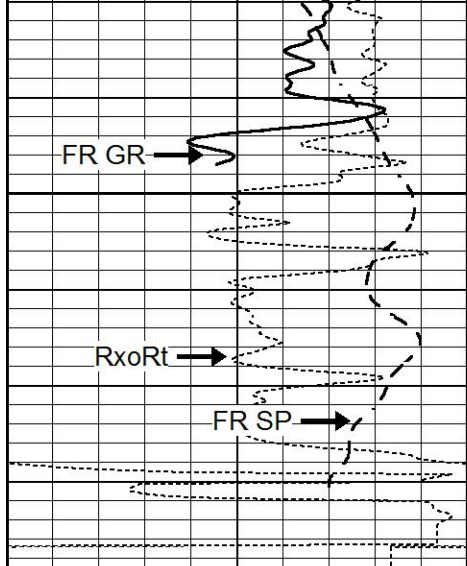
4350

4400

4450

4500

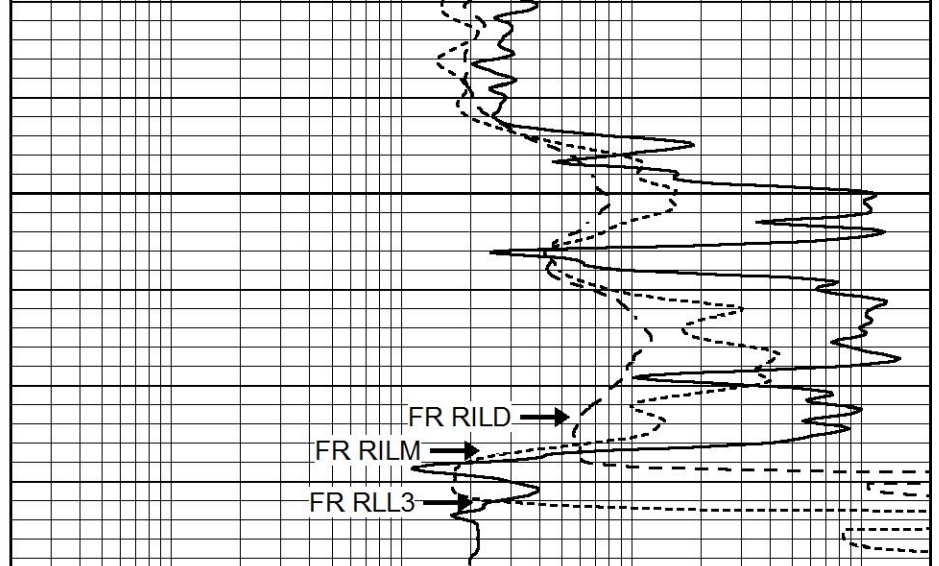




4550

LTD 4584

0	GAMMA RAY (GAPI)	150
-100	SP (mV)	100
-250	Rxo/Rt	50



0.2	SHALLOW GUARD (Ohm-m)	2000
0.2	MEDIUM INDUCTION (Ohm-m)	2000
0.2	DEEP INDUCTION (Ohm-m)	2000

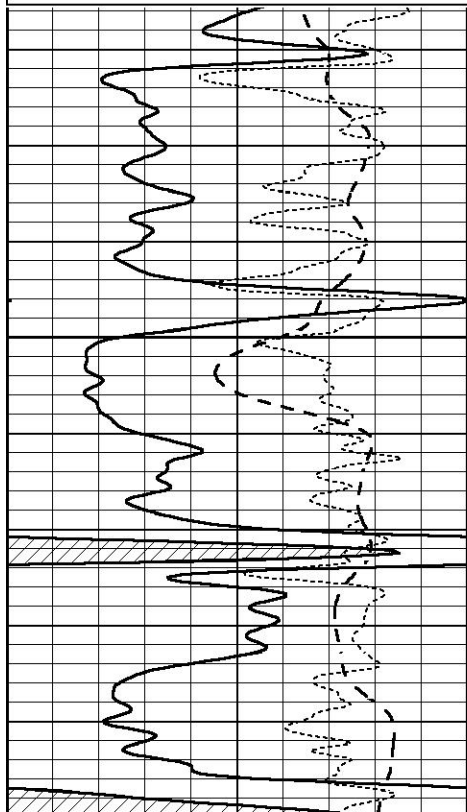


# REPEAT SECTION

Database File 5857pe.db  
 Dataset Pathname pass2.1  
 Presentation Format \_dil  
 Dataset Creation Sun Sep 26 11:34:12 2021  
 Charted by Depth in Feet scaled 1:240

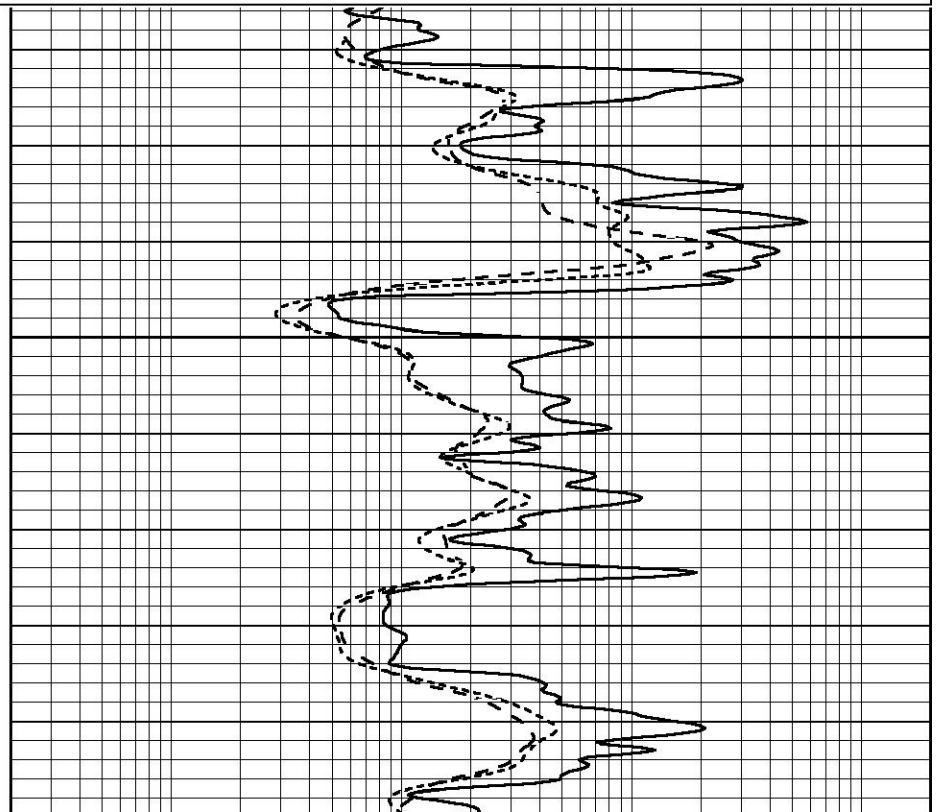
0	GAMMA RAY (GAPI)	150
-100	SP (mV)	100
-250	Rxo/Rt	50

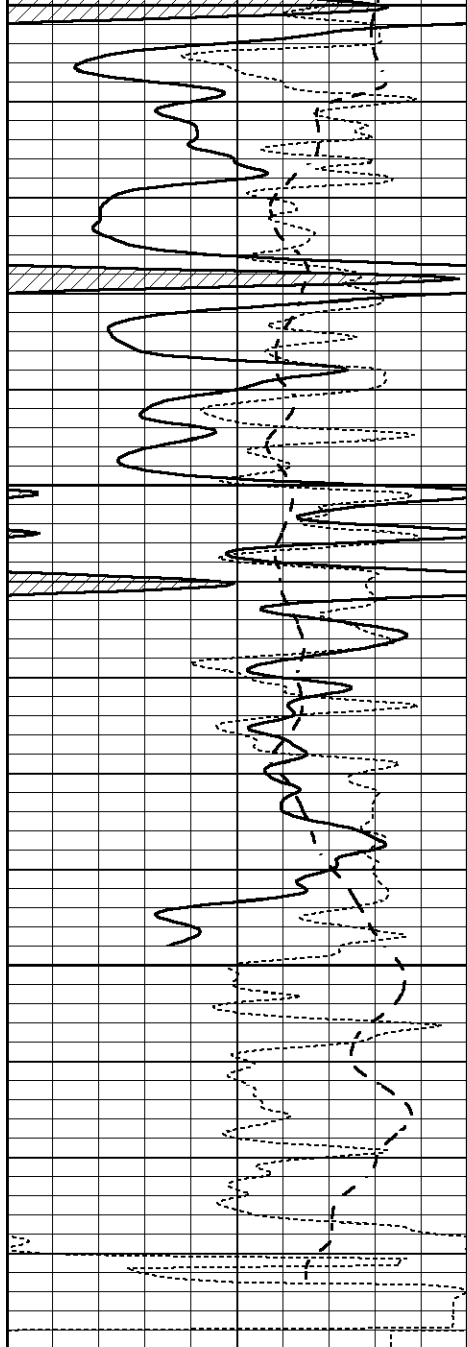
0.2	SHALLOW GUARD (Ohm-m)	2000
0.2	MEDIUM INDUCTION (Ohm-m)	2000
0.2	DEEP INDUCTION (Ohm-m)	2000



4400

4450



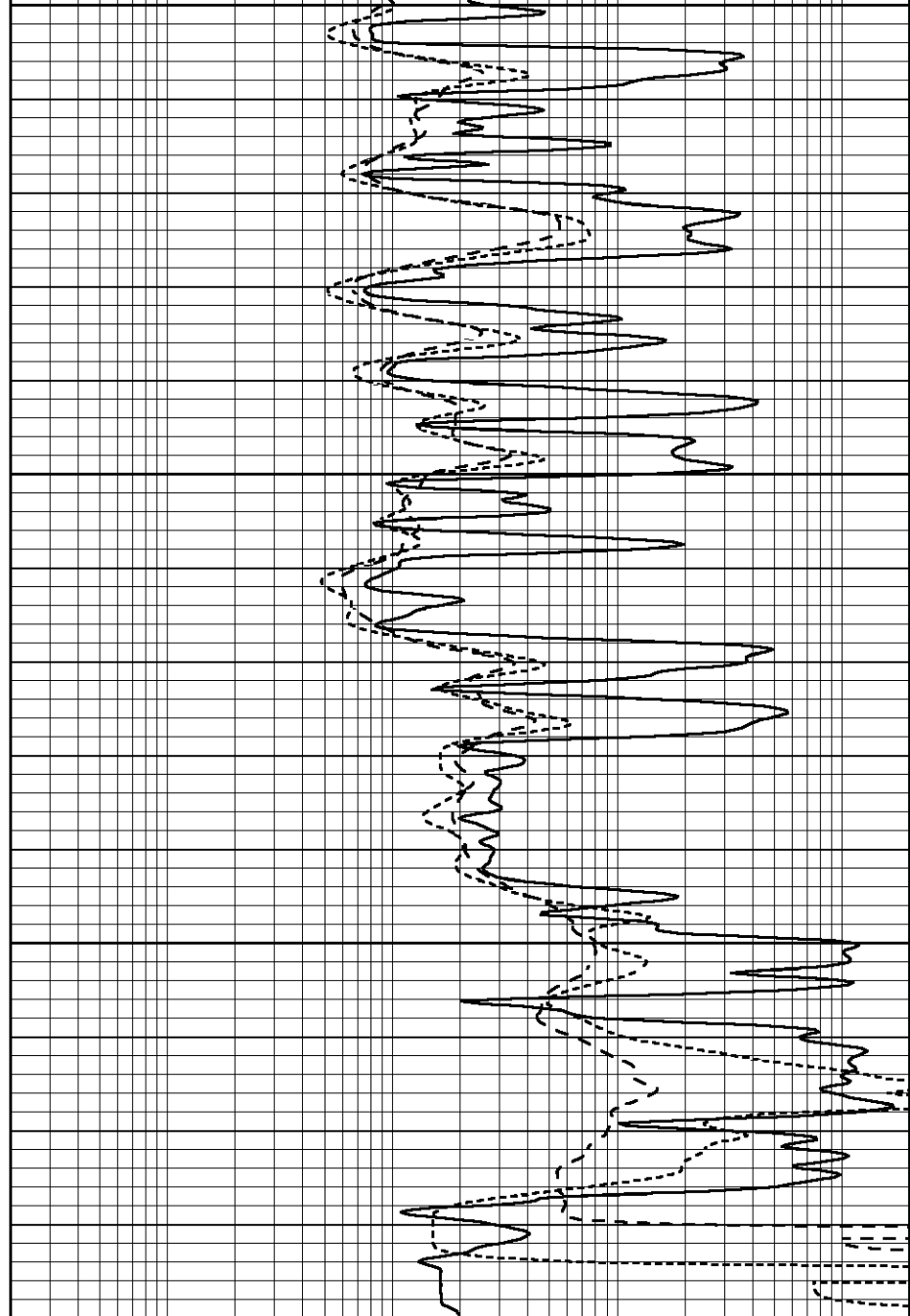


4450

4500

4550

0	GAMMA RAY (GAPI)	150
-100	SP (mV)	100
-250	Rxo/Rt	50



0.2	SHALLOW GUARD (Ohm-m)	2000
0.2	MEDIUM INDUCTION (Ohm-m)	2000
0.2	DEEP INDUCTION (Ohm-m)	2000

Calibration Report

Database File 5857pe.db  
 Dataset Pathname pass2.1  
 Dataset Creation Sun Sep 26 11:34:12 2021

Dual Induction Calibration Report

Serial-Model: FW1410-55-Probe  
 Surface Cal Performed: Tue Feb 19 11:44:18 2019  
 Downhole Cal Performed: Tue Feb 19 11:44:24 2019  
 After Survey Verification Performed: Tue Feb 19 11:44:27 2019

Surface Calibration

Loop:	Readings		V	References		Results	
	Air	Loop		Air	Loop	m	b
Deep	0.011	0.656		1.000	400.000	mmho/m	618.595 5.524

Deep	0.011	0.636	V	1.000	400.000	mmho/m	618.595	-3.924
Medium	-0.000	0.731	V	1.000	464.000	mmho/m	632.856	1.197
Internal:	Zero	Cal		Zero	Cal		m	b
Deep	0.007	0.649	V	0.000	400.000	mmho/m	623.784	-4.595
Medium	0.004	0.743	V	0.000	464.000	mmho/m	627.284	-2.251

Downhole Calibration								
	Readings			References			Results	
	Zero	Cal		Zero	Cal		m'	b'
Deep	-0.824	395.917	mmho/m	-0.976	397.550	mmho/m	1.004	-0.149
Medium	3.565	471.327	mmho/m	3.468	471.590	mmho/m	1.001	-0.099
LL3		7.503	V		1500.000	Ohm-m		
		0.001	V		20.000	Ohm-m		
		-7.481	V		3745.000	mmho-m		

After Survey Verification								
	Readings			Targets			Results	
	Zero	Cal		Zero	Cal		m'	b'
Deep	0.000	0.000	mmho/m	-0.824	395.917	mmho/m	1.000	0.000
Medium	0.000	0.000	mmho/m	3.565	471.327	mmho/m	1.000	0.000
LL3		0.000	Ohm-m		1500.000	Ohm-m		
		0.000	Ohm-m		20.000	Ohm-m		
		0.000	mmho-m		3745.000	mmho-m		

**Compensated Neutron Calibration Report**

Serial Number: 080621PMC  
Tool Model: NABORS

PRE-SURVEY VERIFICATION				
Detector	Readings	Measured	Target	
Short Space	cps			
Long Space	cps	pu		pu

POST-SURVEY VERIFICATION				
Detector	Readings	Measured	Target	
Short Space	cps			
Long Space	cps	pu		pu

**Gamma Ray Calibration Report**

Serial Number: 7  
Tool Model: Probe1  
Performed: Tue Jan 19 17:50:08 2021

Calibrator Value: 1.0 GAPI

Background Reading: 0.0 cps  
Calibrator Reading: 1.0 cps

Sensitivity: 0.5300 GAPI/cps