

# MICRO LOG



Company SHAKESPEARE OIL COMPANY, INC.  
 Well TERRY #1-19  
 Field WALNUT FORK SOUTHEAST  
 County LANE State KANSAS

Location: API #: 15-101-22658-0000  
 1910' FSL & 1450' FEL  
 NE SE NW SE  
 SEC 19 TWP 17S RGE 28W  
 Permanent Datum GROUND LEVEL Elevation 2738  
 Log Measured From KELLY BUSHING 10' A.G.L.  
 Drilling Measured From KELLY BUSHING

Company SHAKESPEARE OIL COMPANY, INC.  
 Well TERRY #1-19  
 Field WALNUT FORK SOUTHEAST  
 County LANE State KANSAS

Date	9/26/21		
Run Number	TWO		
Depth Driller	4580		
Depth Logger	4584		
Bottom Logged Interval	4582		
Top Log Interval	3600		
Casing Driller	8 5/8" @ 266		
Casing Logger	266		
Bit Size	7 7/8		
Type Fluid in Hole	CHEMICAL MUD	CHLORIDES 3400 PPM	
Density / Viscosity	9.2/58		
pH / Fluid Loss	10.5/8.0		
Source of Sample	FLOWLINE		
Rm @ Meas. Temp	1.10 @ 75F		
Rmf @ Meas. Temp	0.82 @ 75F		
Rmc @ Meas. Temp	1.32 @ 75F		
Source of Rmf / Rmc	MEASUREMENT		
Rm @ BHT	0.68 @ 121F		
Time Circulation Stopped	2 HOURS		
Time Logger on Bottom	////		
Maximum Recorded Temperature	121F		
Equipment Number	3802		
Location	HAYS, KANSAS		
Recorded By	JASON CAPPELLUCCI		
Witnessed By	VERN SCHRAG		

<<< Fold Here >>>

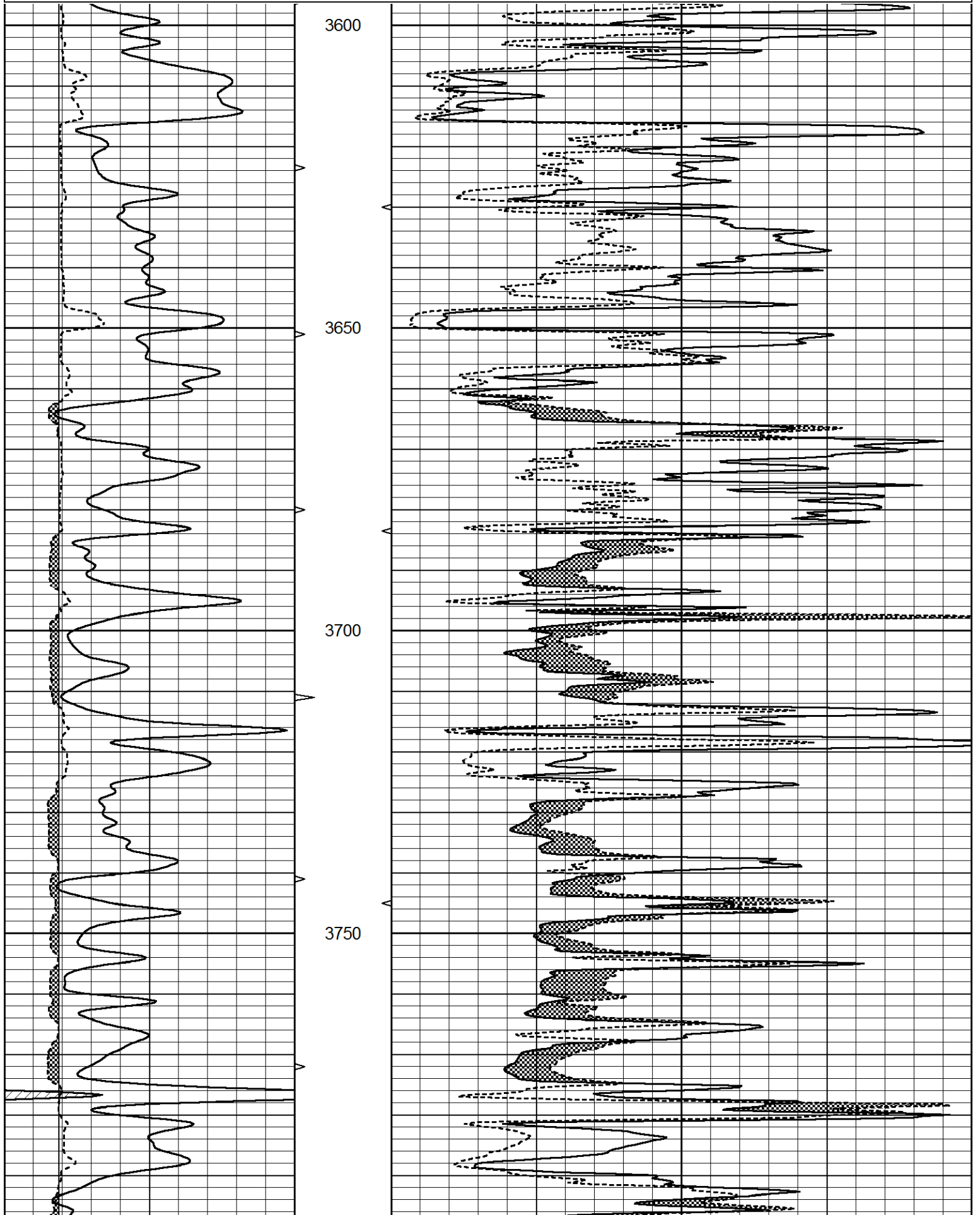
All interpretations are opinions based on inferences from electrical or other measurements and we cannot and do not guarantee the accuracy or correctness of any interpretation, and we shall not, except in the case of gross or willful negligence on our part, be liable or responsible for any loss, costs, damages, or expenses incurred or sustained by anyone resulting from any interpretation made by any of our officers, agents or employees. These interpretations are also subject to our general terms and conditions set out in our current Price Schedule.

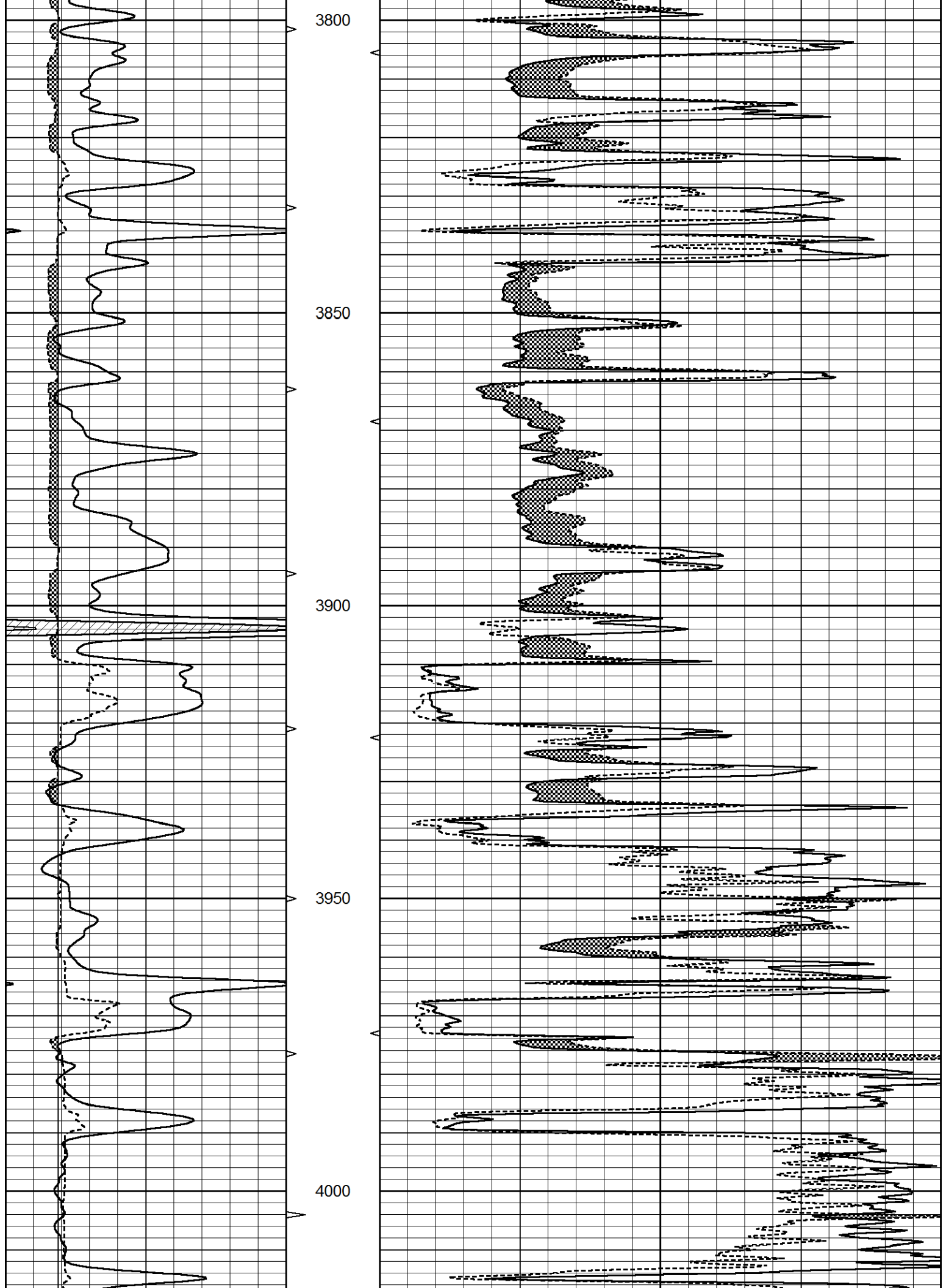
### Comments

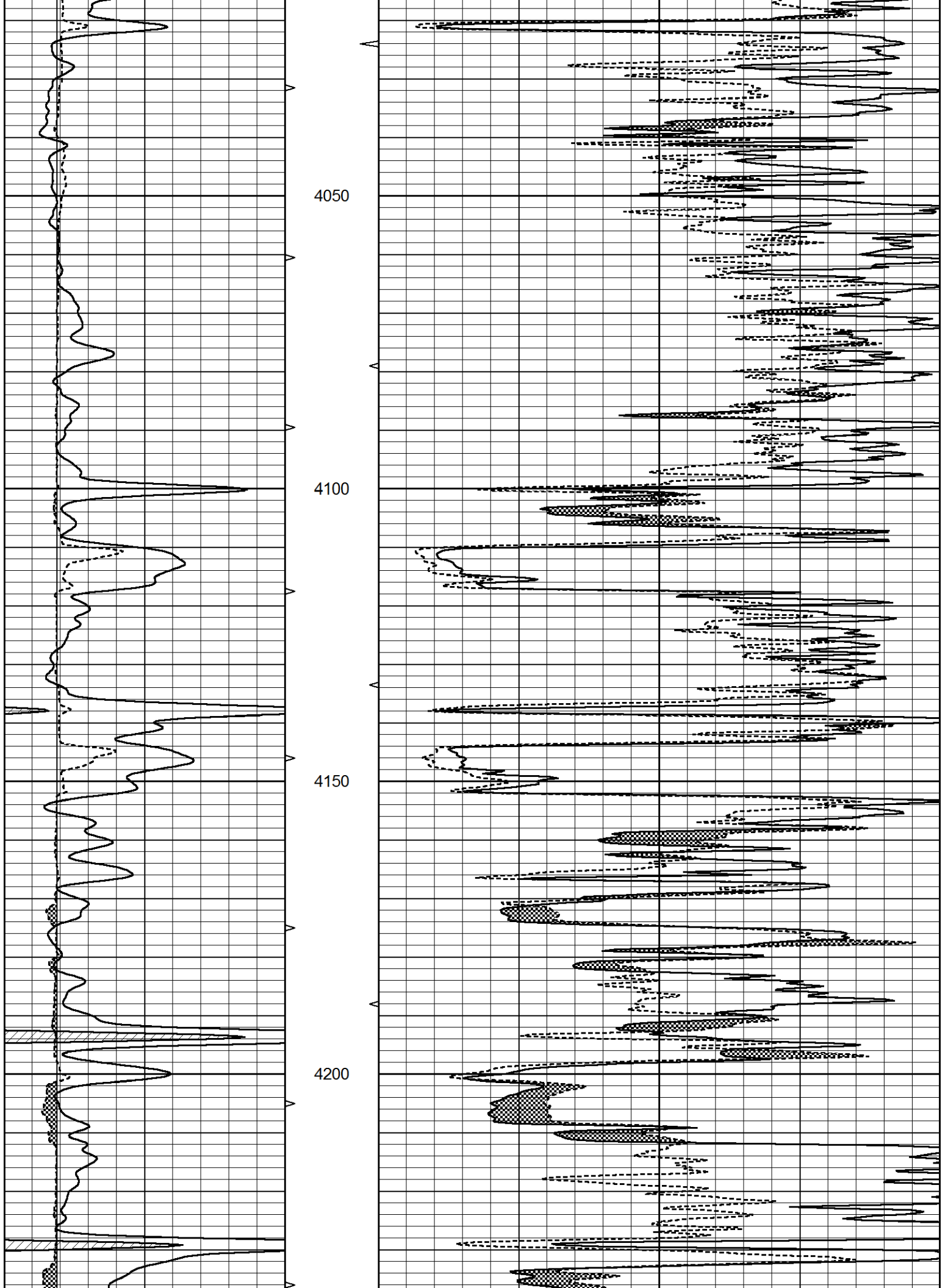
THANK YOU FOR USING ELI WIRELINE SERVICES, HAYS, KS. ( 785 ) 628-6395  
 DIRECTIONS  
 DIGHTON, KS. - 5 NORTH TO RD. 200 - 1 EAST - CURVE NORTH 1/2 MILE  
 WEST INTO

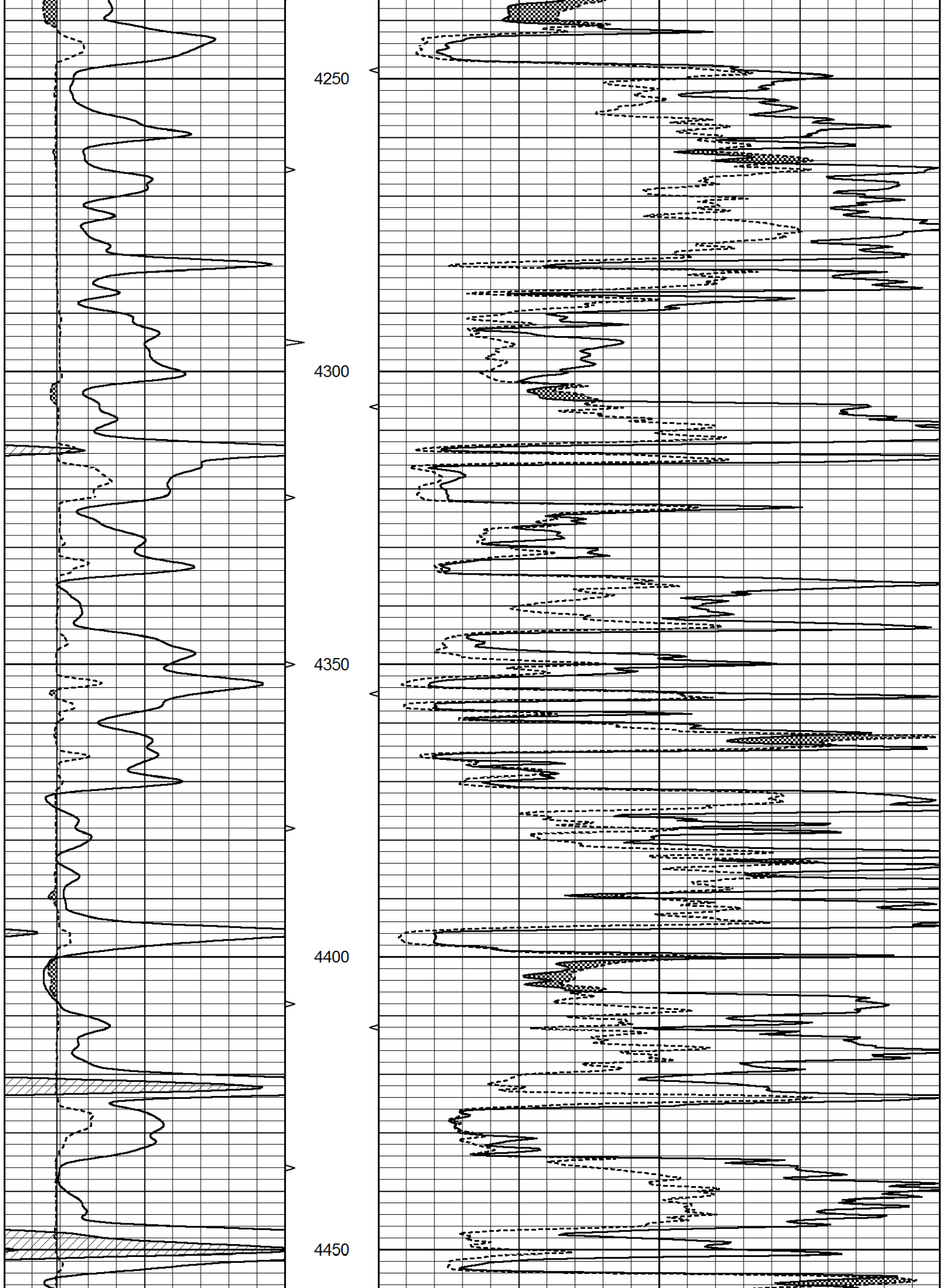
Database File	5857pe.db
Dataset Pathname	pass6.1
Presentation Format	_micro
Dataset Creation	Sun Sep 26 13:28:59 2021
Charted by	Depth in Feet scaled 1:240

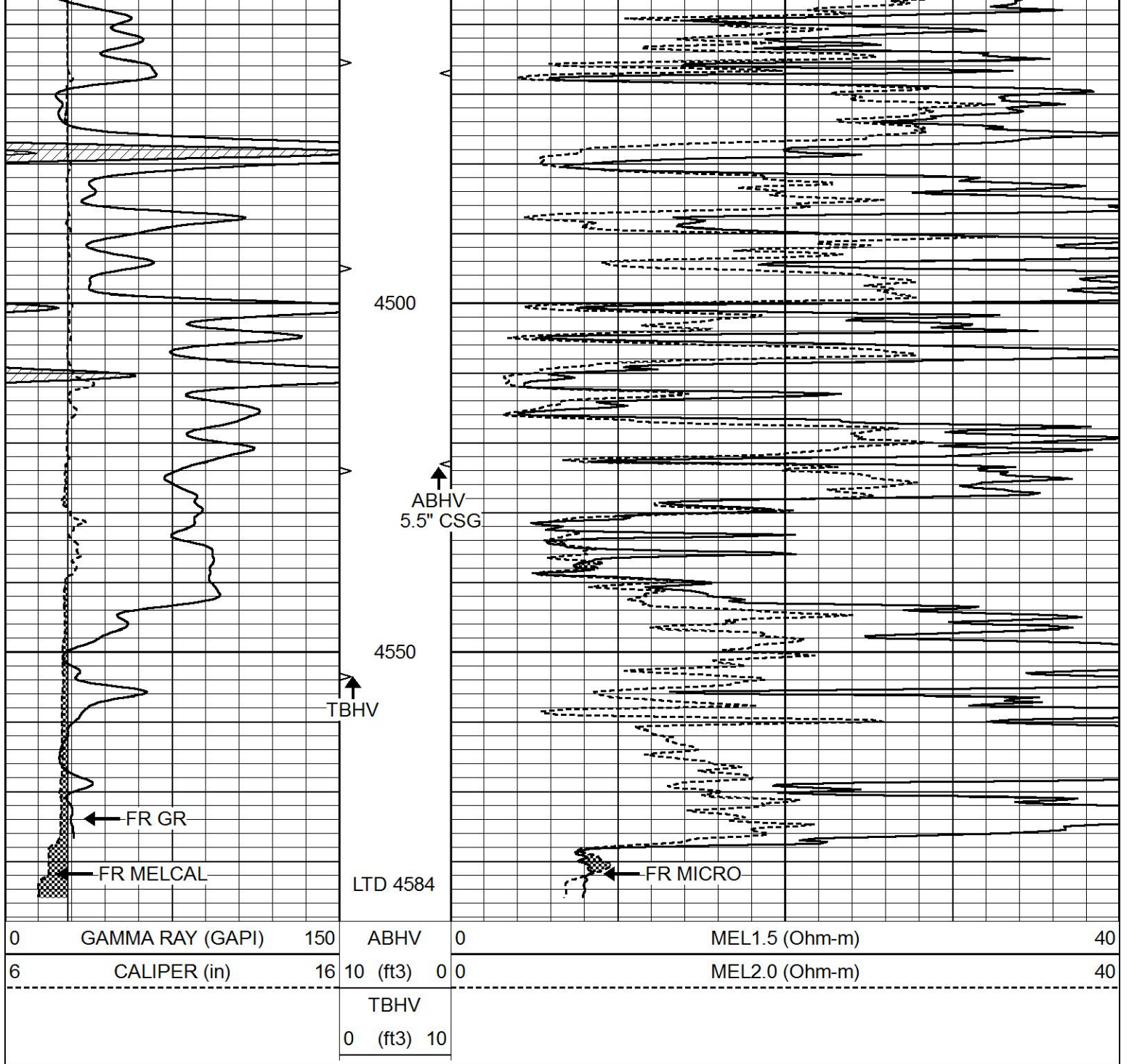
0	GAMMA RAY (GAPI)	150	ABHV	0	MEL1.5 (Ohm-m)	40
6	CALIPER (in)	16	10 (ft3)	0	MEL2.0 (Ohm-m)	40
			TBHV			
			0 (ft3)	10		







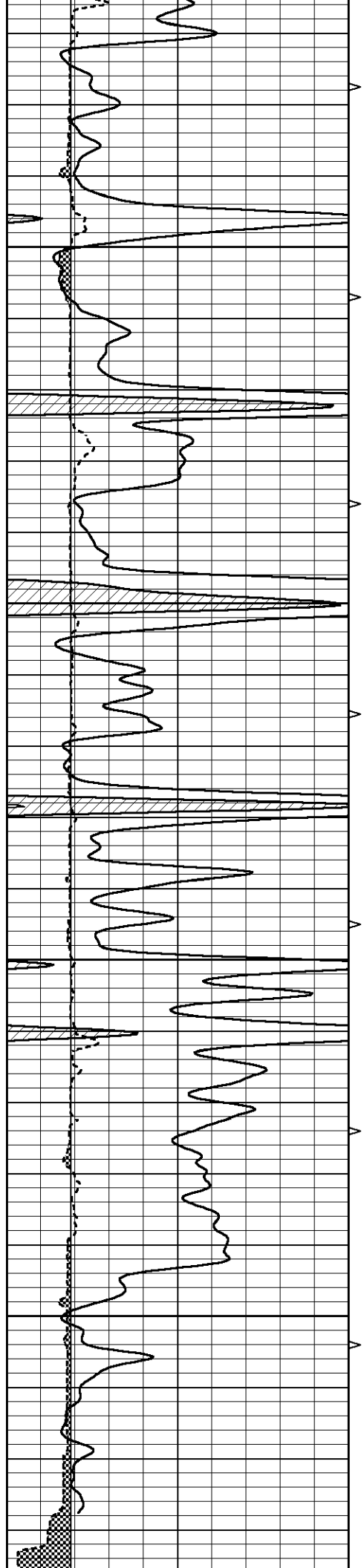




# REPEAT SECTION

Database File 5857pe.db  
 Dataset Pathname pass5.1  
 Presentation Format \_micro  
 Dataset Creation Sun Sep 26 13:24:38 2021  
 Charted by Depth in Feet scaled 1:240

0	GAMMA RAY (GAPI)	150	ABHV	0	MEL1.5 (Ohm-m)	40
6	CALIPER (in)	16	10 (ft3)	0 0	MEL2.0 (Ohm-m)	40
			TBHV			
			0 (ft3)	10		

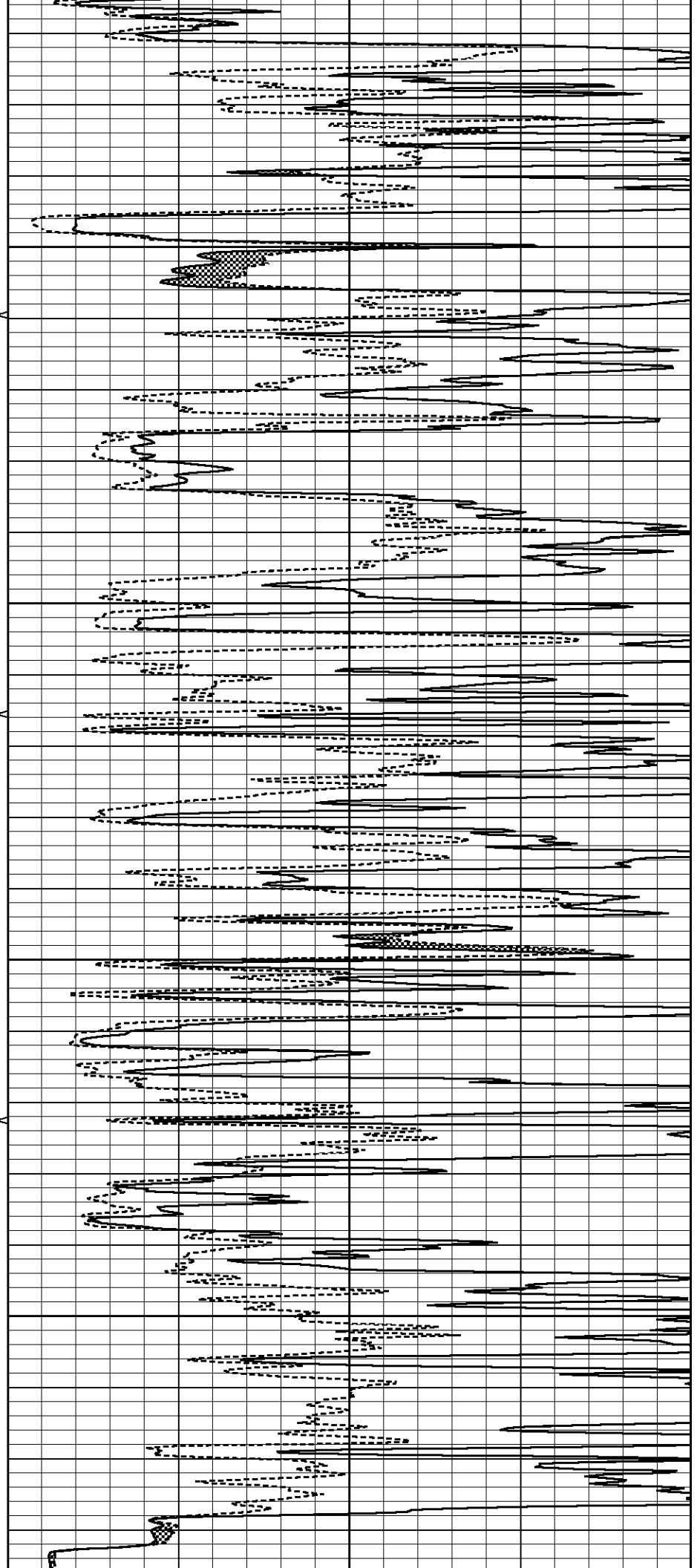


4400

4450

4500

4550



0	GAMMA RAY (GAPI)	150	ABHV	0	MEL1.5 (Ohm-m)	40
6	CALIPER (in)	16	10 (ft3) 0	0	MEL2.0 (Ohm-m)	40
			TBHV			
			0 (ft3) 10			

### Calibration Report

Database File 5857pe.db  
 Dataset Pathname pass5.1  
 Dataset Creation Sun Sep 26 13:24:38 2021

### MICRO\_USR Calibration Report

Serial Number: 070910  
 Tool Model: ProbeL  
 Performed: Thu Sep 23 20:53:46 2021

Caliper Calibration: Gain=7.192 Offset=2.802

References	Low Cal	High Cal
Readings	8.000	14.000
	0.723	1.557

1.5" Calibration: Gain=60.000 Offset=-0.567

References	Low Cal	High Cal
Readings	0.000	20.000
	0.004	1.335

2" Calibration: Gain=85.000 Offset=-2.400

References	Low Cal	High Cal
Readings	0.000	20.000
	0.004	1.029

### Microlog Calibration Report

Serial-Model: 070910-ProbeL  
 Performed: (Not Performed)

	Readings		V	References			Results	
	Zero	Cal		Zero	Cal		m	b
Normal	0.0000	1.0000	V	0.0000	1.0000	Ohm-m	1.0000	0.0000
Inverse	0.0000	1.0000	V	0.0000	1.0000	Ohm-m	1.0000	0.0000
Caliper	0.0000	1.0000	V	0.0000	1.0000	in	1.0000	0.0000

### Gamma Ray Calibration Report

Serial Number: 070558  
 Tool Model: Probe1  
 Performed: Fri Oct 30 21:32:56 2020

Calibrator Value: 1.0 GAPI

Background Reading: 0.0 cps  
 Calibrator Reading: 1.0 cps

Sensitivity: 0.2700 GAPI/cps