



MICRO RESISTIVITY LOG

Company John O. Farmer, Inc.
 Well Sutor-Ziegler #10
 Field Overlook
 County Sheridan
 State KS

Location: 2470 FNL & 2710 FEL
 API #: 15 17921474
 Permanent Datum SEC 30 T1M 8S R0E 281V
 Log Measured From KB 8 7.5GL
 State KS
 Elevation 2569
 OMR Services CDNL

Date 8/3/2021
 Run Number 4000
 Depth Driller 3895
 Bottom Logged Interval 3200
 Top Log Interval 3200
 Casing Driller 222
 Casing Logger 7.78"
 Bit Size
 Type Fluid in Hole
 Density / Viscosity
 pH / Fluid Loss
 Source of Sample
 Km (@) Meas. temp
 Rmt (@) Meas. temp
 Rinc (@) Meas. temp
 Source of Rmt/ Rinc
 Km @ BHT
 Time Circulation Stopped
 Time Lagged on Bottom
 Maximum Recorded Temperature
 Equipment Number
 Hrs. 800S
 Hrs. 800S
 C. Anderson
 M. Ashlin (alias)

<<< Fold Here >>>
 All interpretations are opinions based on inferences from electrical or other measurements and we cannot and do not guarantee the accuracy or correctness of any interpretation, and we shall not, except in the case of gross or willful negligence on our part, be liable or responsible for any loss, costs, damages, or expenses incurred or sustained by anyone resulting from any interpretation made by any of our officers, agents or employees. These interpretations are also subject to our general terms and conditions set out in our current Price Schedule.

Comments

Hill City, KSU.s-24W/Wmain St 23 mi West to Rd 10 S(SUB STATION BY TURN),
 South on Rd 10 S 1.3 mi (South to East .3 mi South 1 mi east) to Rd 100E(dead end T)
 Then South on Rd 100 E 1.5 mi.(second Cattle Guard down 100 E on West Side)
 West into Location Up hill by Tank Batteries

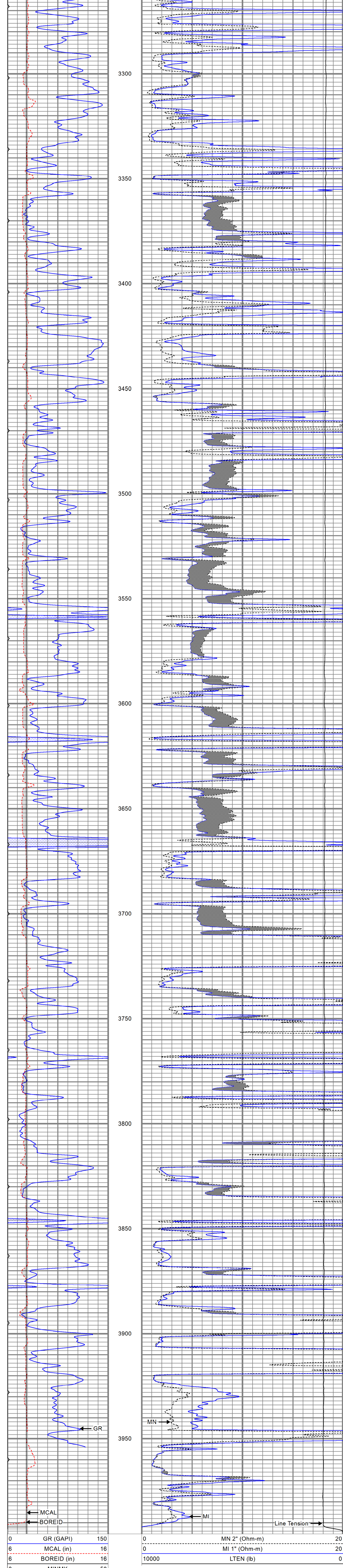
LAT/LONG
 39.328285/-100.2650529

Thank you for using Gemini Wireline
 785-625-1182

MAIN PASS

Database File jofsutor-ziegler#10oh.db
 Dataset Pathname pass4
 Presentation Format kml
 Dataset Creation Tue Aug 03 18:36:25 2021
 Charted by Depth in Feet scaled 1:240

0	GR (GAPI)	150	0	MN 2" (Ohm-m)	20
6	MCAL (in)	16	0	MI 1" (Ohm-m)	20
6	BOREID (in)	16	10000	LTEN (lb)	0
0	MINMK	50			

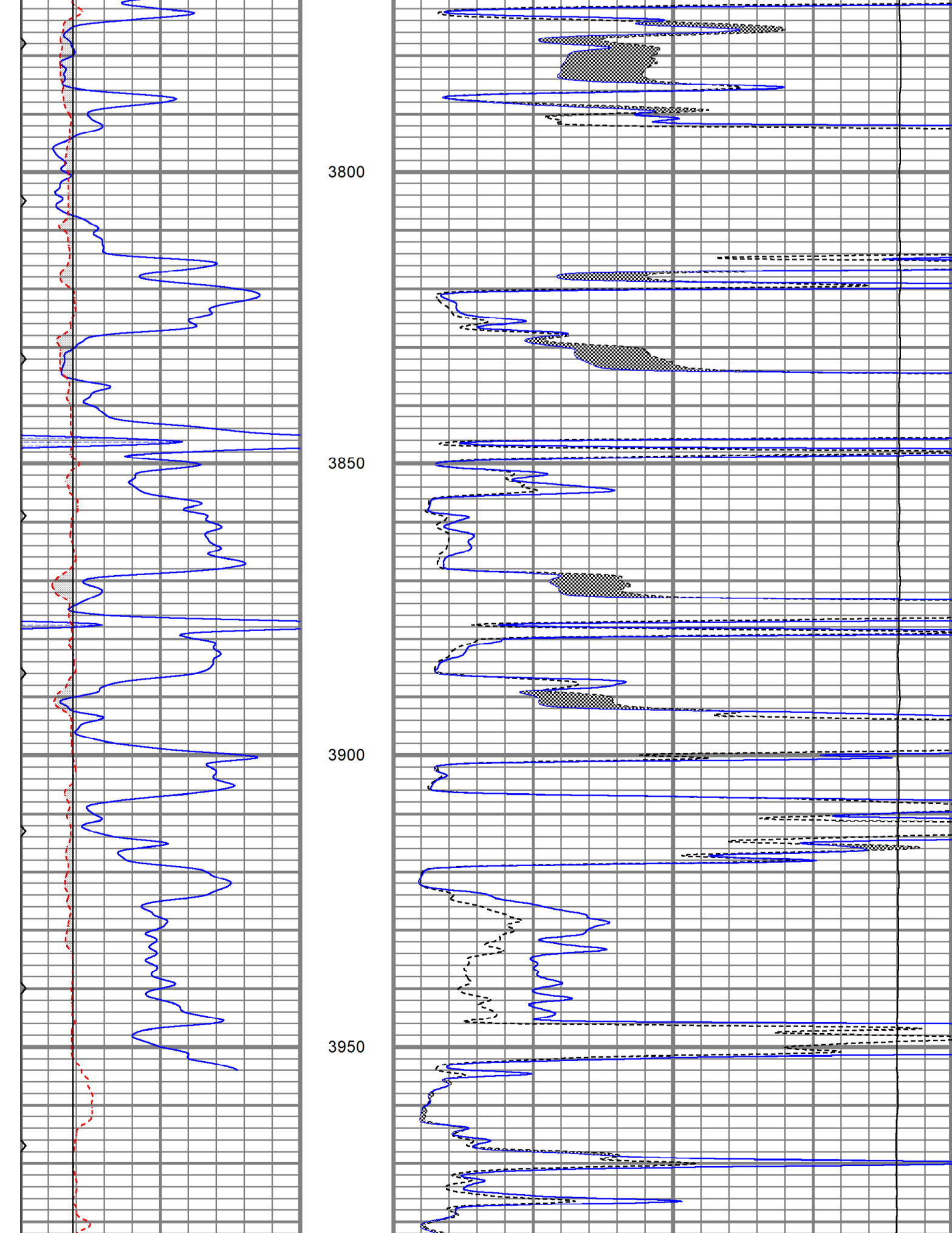


0	GR (GAPI)	150	0	MN 2" (Ohm-m)	20
6	MCAL (in)	16	0	MI 1" (Ohm-m)	20
6	BOREID (in)	16	10000	LTEN (lb)	0
0	MINMK	50			

REPEAT SECTION

Database File jofsutor-ziegler#10oh.db
 Dataset Pathname pass3
 Presentation Format kml
 Dataset Creation Tue Aug 03 18:23:13 2021
 Charted by Depth in Feet scaled 1:240

0	GR (GAPI)	150	0	MN 2" (Ohm-m)	20
6	MCAL (in)	16	0	MI 1" (Ohm-m)	20
6	BOREID (in)	16	10000	LTEN (lb)	0
0	MINMK	50			



0	GR (GAPI)	150	0	MN 2" (Ohm-m)	20
6	MCAL (in)	16	0	MI 1" (Ohm-m)	20
6	BOREID (in)	16	10000	LTEN (lb)	0
0	MINMK	50			

Calibration Report

Database File jofsutor-ziegler#10oh.db
 Dataset Pathname pass4
 Dataset Creation Tue Aug 03 18:36:25 2021

Microlog Calibration Report

Serial-Model: 1600-Pengo
 Performed: Tue Aug 3 18:22:09 2021

Readings		References		Results	
Zero	Cal	Zero	Cal	m	b
Normal	0.0059	0.4817	V	0.0000	10.0000
Inverse	0.0061	0.6302	V	0.0000	Ohm-m
Calliper	2.9973	6.1045	V	7.6500	15.0000
					in
					2.3655
					0.5600

Sensor	Offset (ft)	Schematic	Description	Length (ft)	O.D. (in)	Weight (lb)
MCAL	1.30		CHD-None	0.75	1.50	5.00
MI	1.30		ML-Pengo(1600)	6.97	3.50	100.00
MN	1.30					

Dataset: jofsutor-ziegler#10oh.db: field/well/run1/pass4
 Total length: 7.72 ft
 Total weight: 105.00 lb
 O.D.: 3.50 in