



# COMPENSATED DENSITY NEUTRON LOG

Company	John O. Farmer, Inc.	Well	Sutor-Ziegler #10
Field	Overlook	County	Sheridan
State	KS	Location:	SEC 30 TWP 8S RGE 26W
County	Sheridan	Log Measure From	Ground Level
AP#:	15 19 21474	Drilling Measure From	KB
Other Services	DIL	Elevation	2689
Company	John O. Farmer, Inc.	Permanent Datum	KB
Well	Sutor-Ziegler #10	Log Measure From	Ground Level
Field	Overlook	Drilling Measure From	KB
County	Sheridan	Elevation	2689
State	KS	Other Services	DIL
Location:	SEC 30 TWP 8S RGE 26W	Permanent Datum	KB
AP#:	15 19 21474	Log Measure From	Ground Level
Other Services	DIL	Drilling Measure From	KB
Company	John O. Farmer, Inc.	Permanent Datum	KB
Well	Sutor-Ziegler #10	Log Measure From	Ground Level
Field	Overlook	Drilling Measure From	KB
County	Sheridan	Elevation	2689
State	KS	Other Services	DIL
Location:	SEC 30 TWP 8S RGE 26W	Permanent Datum	KB
AP#:	15 19 21474	Log Measure From	Ground Level
Other Services	DIL	Drilling Measure From	KB

All interpretations are opinions based on inferences from electrical or other measurements and we cannot and do not guarantee the accuracy or correctness of any interpretation, and we shall not, except in the case of gross or willful negligence on our part, be liable or responsible for any loss, costs, damages, or expenses incurred or sustained by anyone resulting from any interpretation made by any of our officers, agents or employees. These interpretations are also subject to our general terms and conditions set out in our current Price Schedule.

Comments

Hill City, KSU.s-24W/Wmain St 23 mi West to Rd 10 S(SUB STATION BY TURN), South on Rd 10 S 1.3 mi (South to East. 3 mi South 1 mi east) to Rd 100E(dead end T) Then South on Rd 100 E 1.5 mi.(second Cattle Guard down 100 E on West Side) West into Location Up hill by Tank Batteries

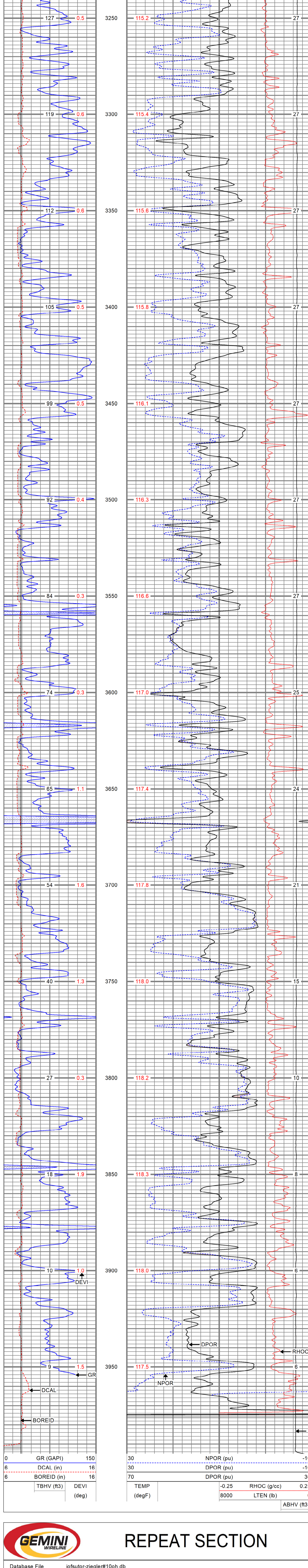
LAT/LONG  
39.328285/-100.2650529

Thank you for using Gemini Wireline  
785-625-1182

<<< Fold Here >>>

Database File jofsutor-ziegler#10oh.db  
Dataset Pathname pass2.1  
Presentation Format digital\_kcdnl  
Dataset Creation Tue Aug 03 17:40:41 2021  
Charted by Depth in Feet scaled 1:240

0	GR (GAPI)	150	30	NPOR (pu)	-10
6	DCAL (in)	16	30	DPOR (pu)	-10
6	BOREID (in)	16	70	DPOR (pu)	30
	TBHV (ft3)	DEVI (deg)	TEMP (degF)	-0.25 RHOC (g/cc)	0.25
				8000 LTEN (lb)	0
					ABHV (ft3)

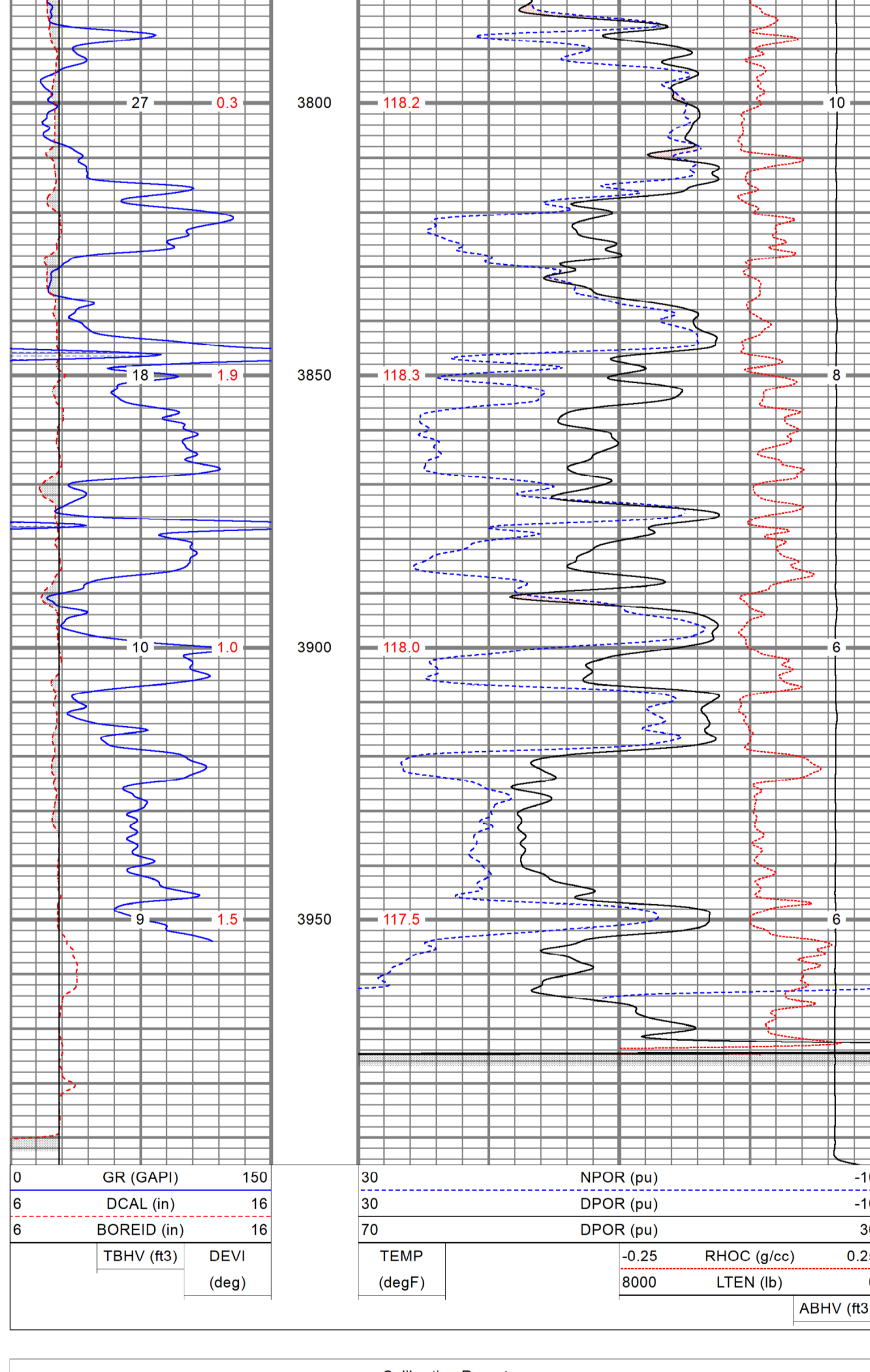


0	GR (GAPI)	150	30	NPOR (pu)	-10
6	DCAL (in)	16	30	DPOR (pu)	-10
6	BOREID (in)	16	70	DPOR (pu)	30
	TBHV (ft3)	DEVI (deg)	TEMP (degF)	-0.25 RHOC (g/cc)	0.25
				8000 LTEN (lb)	0
					ABHV (ft3)

## REPEAT SECTION

Database File jofsutor-ziegler#10oh.db  
Dataset Pathname pass2.2  
Presentation Format digital\_kcdnl  
Dataset Creation Tue Aug 03 17:41:42 2021  
Charted by Depth in Feet scaled 1:240

0	GR (GAPI)	150	30	NPOR (pu)	-10
6	DCAL (in)	16	30	DPOR (pu)	-10
6	BOREID (in)	16	70	DPOR (pu)	30
	TBHV (ft3)	DEVI (deg)	TEMP (degF)	-0.25 RHOC (g/cc)	0.25
				8000 LTEN (lb)	0
					ABHV (ft3)



0	GR (GAPI)	150	30	NPOR (pu)	-10
6	DCAL (in)	16	30	DPOR (pu)	-10
6	BOREID (in)	16	70	DPOR (pu)	30
	TBHV (ft3)	DEVI (deg)	TEMP (degF)	-0.25 RHOC (g/cc)	0.25
				8000 LTEN (lb)	0
					ABHV (ft3)

## Calibration Report

Database File jofsutor-ziegler#10oh.db  
Dataset Pathname pass2.1  
Dataset Creation Tue Aug 03 17:40:41 2021

### Dual Induction Calibration Report

Serial-Model: 1989-ADM  
Surface Cal Performed: Tue Feb 4 16:04:10 2020  
Downhole Cal Performed: Wed Jun 6 19:34:10 2018  
After Survey Verification Performed: Wed Jun 6 19:34:10 2018

Surface Calibration		Readings		References		Results	
Loop:		Air	Loop	Air	Loop	m	b
Deep	-0.012	0.665	V	0.000	350.000	mmho/m	516.748
Medium	-0.013	0.752	V	0.000	400.000	mmho/m	522.482
Internal:	Zero	Cal		Zero	Cal		
Deep	-0.011	0.668	V	0.000	350.000	mmho/m	515.730
Medium	-0.015	0.752	V	0.000	550.000	mmho/m	716.653

Downhole Calibration		Readings		References		Results	
Internal:	Zero	Cal		Zero	Cal	m	b
Deep	0.000	0.000	mmho/m	0.419	351.110	mmho/m	1.000
Medium	0.000	0.000	mmho/m	-0.877	400.105	mmho/m	1.000
Shallow	2.502	0.040	V	500.000	2.000	Ohm-m	180.323

After Survey Verification		Readings		Targets		Results	
Internal:	Zero	Cal		Zero	Cal	m'	b'
Deep	0.000	0.000	mmho/m	0.000	0.000	mmho/m	1.000
Medium	0.000	0.000	mmho/m	0.000	0.000	mmho/m	1.000
Shallow	0.000	0.000	Ohm-m	500.000	2.000	Ohm-m	1.000

### Neutron Calibration Report

Serial Number: AD5139  
Tool Model: ADMY5139  
Performed: (Not Performed)

Calibrator Value: 1 NAPI  
Calibrator Reading: 1 cps  
Sensitivity: 1 NAPI/cps

### Temperature Calibration Report

Serial Number: WthMC  
Tool Model: WMC  
Performed: Fri Apr 19 12:15:04 2019

Reference Reading: 0.00 degF, 0.00 degF  
High Reference: 1.00 degF, 1.00 degF  
Gain: 1.00  
Offset: 1.00  
Delta Spacing: 1

### Inclinometer Calibration Report

Performed: Wed May 5 19:20:48 2021

	Low Read.	High Read.	Low Ref.	High Ref.	
X Accelerometer	205.00	1843.00	-1.00	1.00	gee
Y Accelerometer	205.00	1843.00	-1.00	1.00	gee
Z Accelerometer					gee

### Gamma Ray Calibration Report

Serial Number: WthMC  
Tool Model: WMC  
Performed: Wed May 5 19:21:08 2021

Calibrator Value: 1.0 GAPI  
Background Reading: 0.0 cps  
Calibrator Reading: 1.0 cps  
Sensitivity: 1.0000 GAPI/cps

Sensor	Offset (ft)	Schematic	Description	Length (ft)	O.D. (in)	Weight (lb)
GR	38.71		CHD-STD	0.50	1.69	1.00
ACCY	37.54		ADT-WMC (WthMC)	4.58	3.50	120.00
ACCX	37.54		Admyr Telemetry With Mudcell			
SSTAT	37.13		NEU-ADMYS139 (AD5139)	5.65	3.50	50.00
PSTAT	36.29		Admyr NEU DIGITAL			
ASTAT	36.29		CDL-GEARHART (2501)	9.69	4.00	240.00
GRD	35.46					
TEMP	35.46					
NEU	31.39					
LSD	22.02					
DCAL	21.73					
SSD	21.48					
SP	10.60					
CILD	10.60		DIL-ADM (1989)	19.71	4.00	300.00
CILM	6.89		Dual Induction			
RLL3	1.70					

Dataset: jofsutor-ziegler#10oh.db; field/well/run/1/pass2.1  
Total length: 40.13 ft  
Total weight: 711.00 lb  
O.D.: 4.00 in