



MIDWEST WIRELINE

# DUAL INDUCTION LOG

Company **Thomas Garner, Inc.**  
 Well **Dudrey #3-6**  
 Field **Merle**  
 County **Stafford** State **Kansas**

Company **Thomas Garner, Inc.**  
 Well **Dudrey #3-6**  
 Field **Merle**  
 County **Stafford**  
 State **Kansas**

Location: **330' FNL & 1000' FEL**  
**SEC 6 TWP 24S RGE 13W**  
 Permanent Datum **Ground Level** Elevation **1914'**  
 Log Measured From **Kelly Bushing**  
 Drilling Measured From **Kelly Bushing**  
 Other Services **CNL/CDL MEL/BHCS**  
 Elevation **K.B. 1925'**  
**D.F. N/A**  
**G.L. 1914'**

Date	7/30/2021
Run Number	One
Depth Driller	4105'
Depth Logger	4102'
Bottom Logged Interval	4101'
Top Log Interval	350'
Casing Driller	8.625" @ 385'
Casing Logger	382'
Bit Size	7.875"
Type Fluid in Hole	Chemical
Salinity, ppm CL	10,000
Density / Viscosity	9.1 60
pH / Fluid Loss	10.5 13.2
Source of Sample	FLOWLINE
Rm @ Meas. Temp	.35 @ 65
Rmt @ Meas. Temp	.26 @ 65
Rmc @ Meas. Temp	.47 @ 65
Source of Rmf / Rmc	CHARTS
Rm @ BHT	.19 @ 117
Operating Rig Time	3 Hours
Max Rec. Temp. F	117 Deg/F
Equipment Number	P-108
Location	HAYS
Recorded By	J. Henrickson
Witnessed By	Keith Reavis

<<< Fold Here >>>

All interpretations are opinions based on inferences from electrical or other measurements and Midwest Wireline LLC cannot and does not guarantee the accuracy or correctness of any interpretation, and Midwest Wireline LLC will not be liable or responsible for any loss, costs, damages, or expenses incurred or sustained by anyone resulting from any interpretation made by any of our officers, agents or employees.

### Comments

N/A DENOTES NOT AVAILABLE OR NON-APPLICABLE.

St. John Kansas  
 2 West on NE 30th, 1/8 South on 20th, West Into

Log Measured From: **Kelly Bushing**      11 Ft. Above Permanent Datum

THANK YOU FOR USING MIDWEST WIRELINE LLC  
 785-625-3858


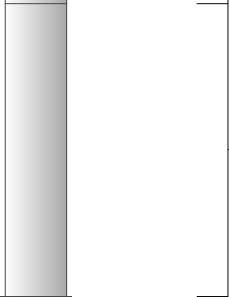
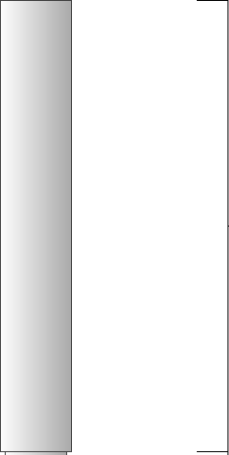

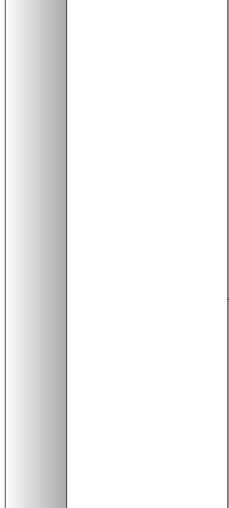
<b>Your Midwest Wireline Crew</b>	<b>This Log Record Was Witnessed By</b>
Engineer: <b>J. Henrickson</b>	Primary Witness: <b>Keith Reavis</b>
Operator:	Secondary Witness:
Operator:	Secondary Witness:
Operator:	Secondary Witness:

# Log Variables

DatabaseC:\ProgramData\Warrior\Data\garner\_dudrey\_3\_6.db  
 Dataset field/well/stack/pass4.1/\_vars\_

## Top - Bottom

A	BOREID in	BOTTEMP degF	CASEOD in	CASETHCK in	FLUIDDEN g/cc	M	MATRXDEN g/cc
1	7.875	113	5.5	0	1	2	2.71
NPORSEL	PERFS	SNDERR mmho/m	SNDERRM mmho/m	SPSHIFT mV	SRFTEMP degF	SZCOR	TDEPTH ft
Limestone	0	-5	0	640	82	Off	4102

Sensor	Offset (ft)	Schematic	Description	Length (ft)	O.D. (in)	Weight (lb)
GR	33.00		GR-M&W (89-M&W)	3.00	3.50	50.00
CNLSC CNSSC	29.90 29.15		CNT-M&W (10-PSI)	5.50	3.50	100.00
LSD DCAL SSD	20.85 20.83 20.35		CDL-M&W (915-956)	8.50	4.00	250.00
RLL3F RLL3	15.80 15.80					
CILD	8.00		DIL-PSI HIGH TEMP (959-1032)	18.50	3.50	220.00

CILM 4.70

SP 0.20

Dataset: garner\_dudrey\_3\_6.db: field/well/stack/pass4.1  
 Total length: 35.50 ft  
 Total weight: 620.00 lb  
 O.D.: 4.00 in



MIDWEST WIRELINE

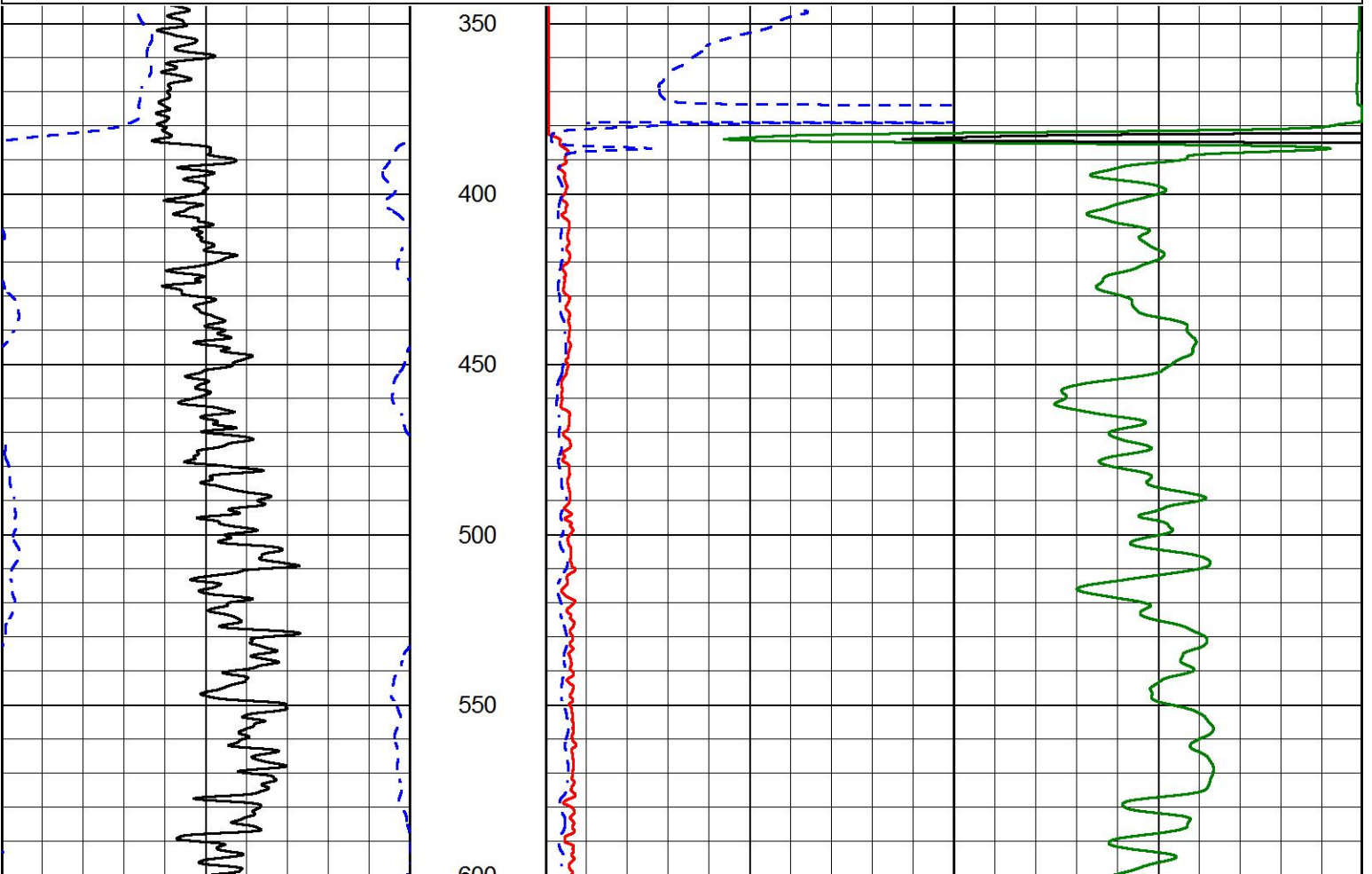
# 2" SCALE RESISTIVITY

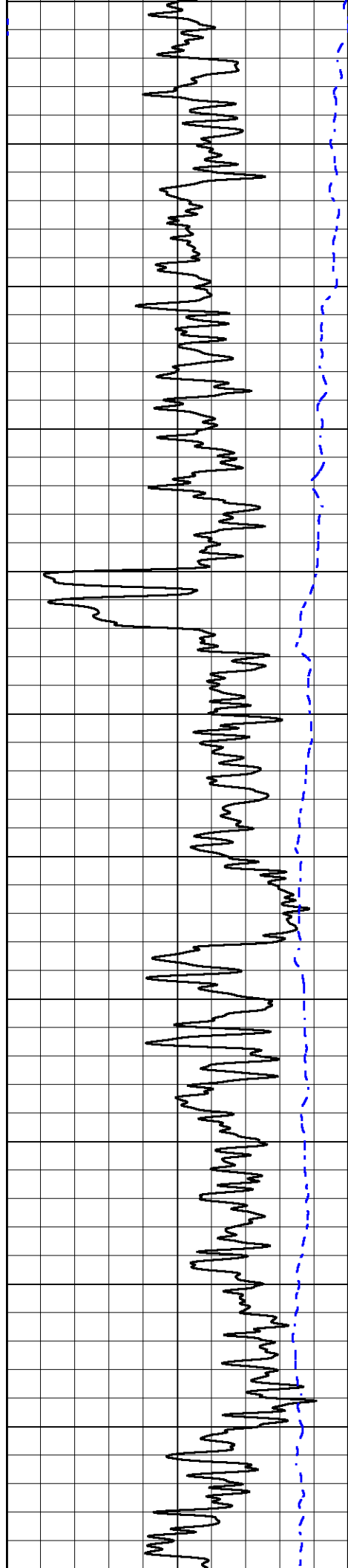
## MAIN PASS

Database File garner\_dudrey\_3\_6.db  
 Dataset Pathname stack/pass5.1  
 Presentation Format dil2in  
 Dataset Creation Fri Jul 30 03:53:44 2021  
 Charted by Depth in Feet scaled 1:600

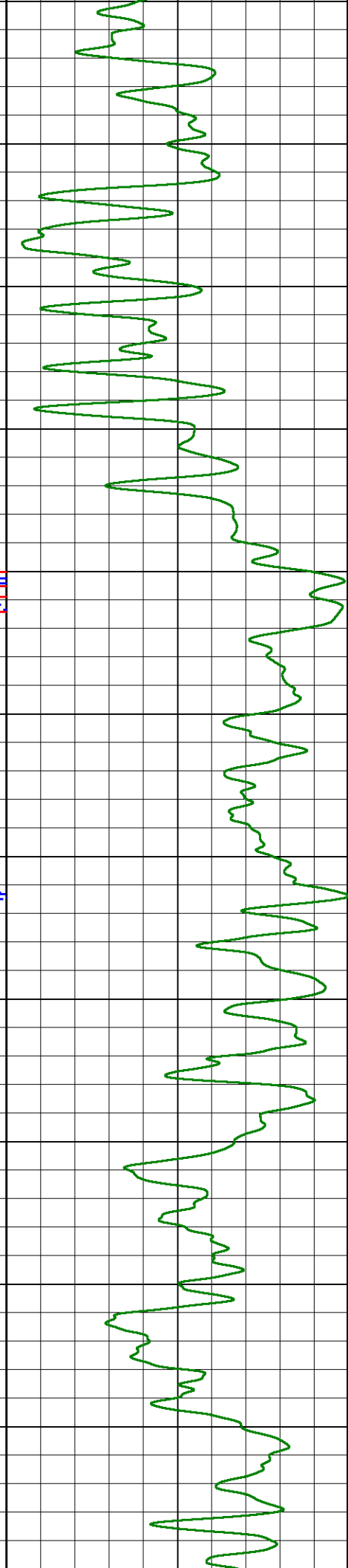
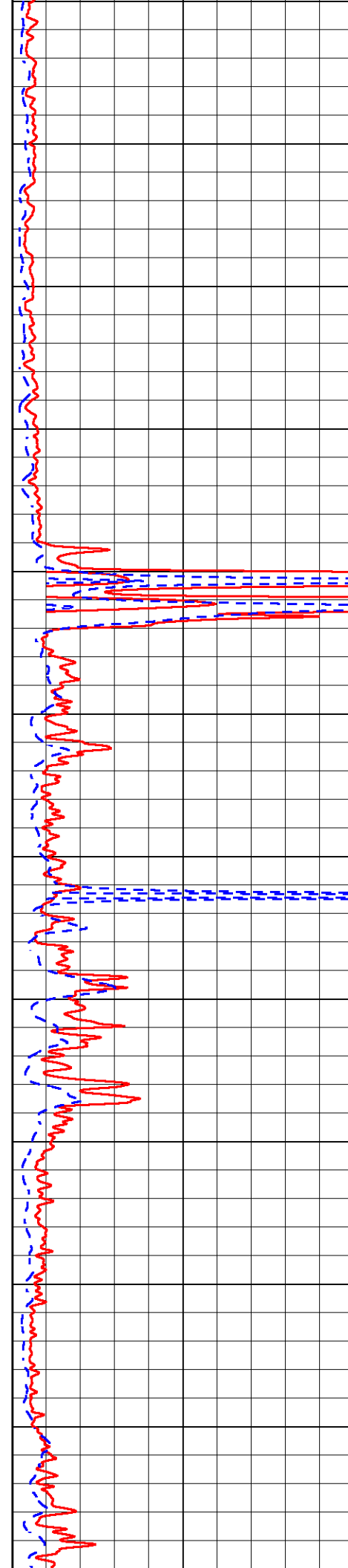
0 GAMMA RAY (GAPI) 150  
 -200 SP (mV) 0

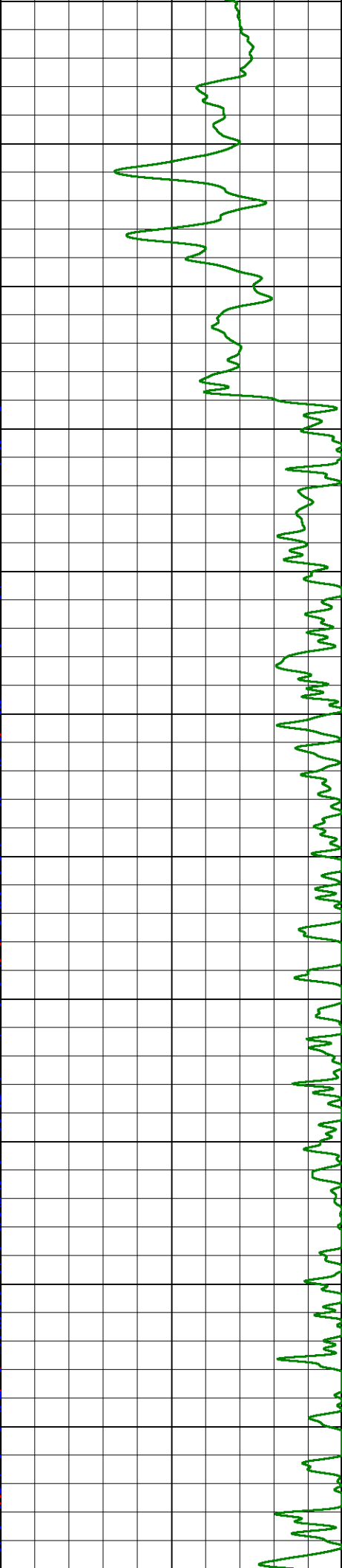
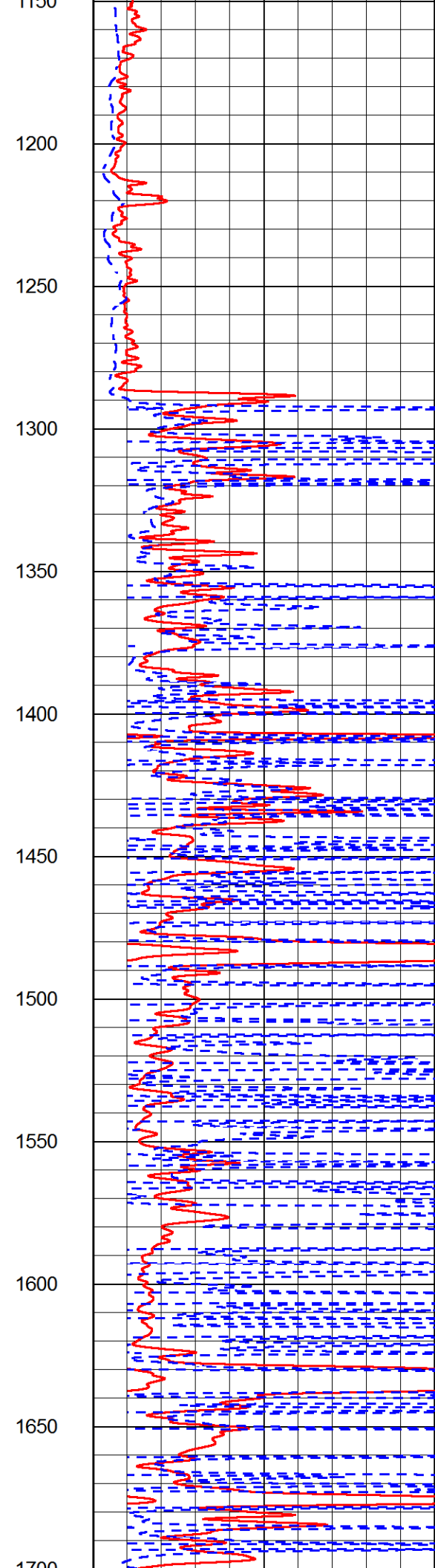
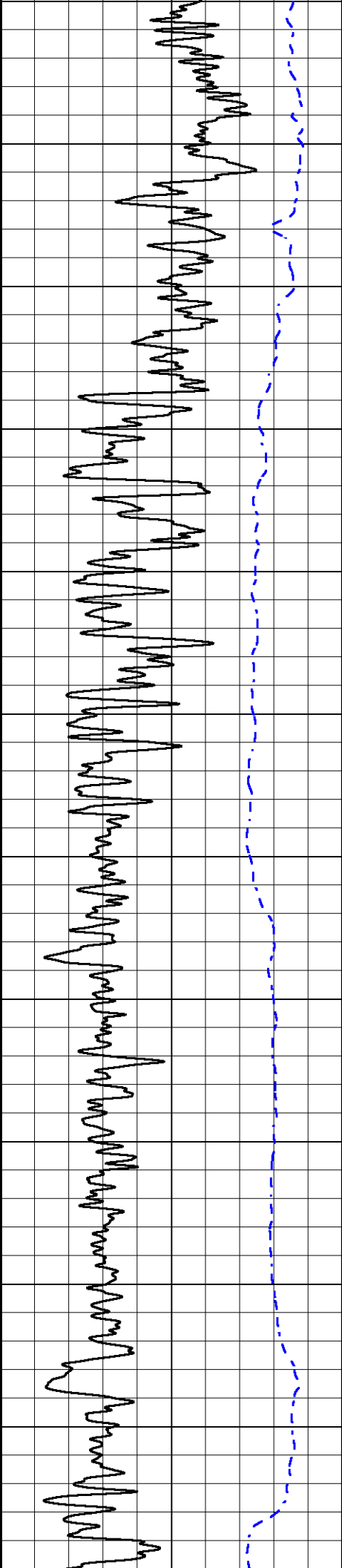
2000 CILD (mmho/m) 0  
 0 RLL3 (Ohm-m) 50  
 0 DEEP RESISTIVITY (Ohm-m) 50  
 50 RLL3 (Ohm-m) 200  
 50 RILD (Ohm-m) 200

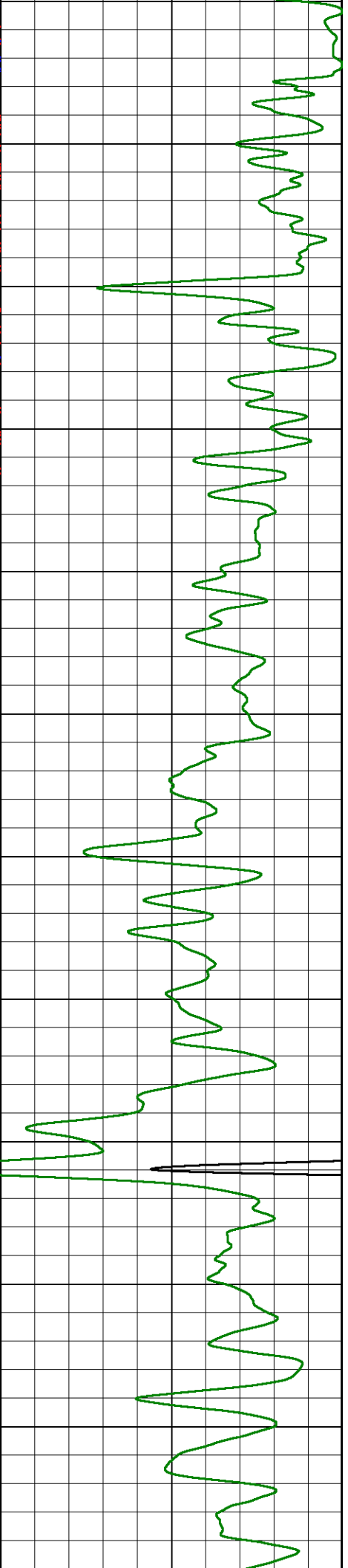
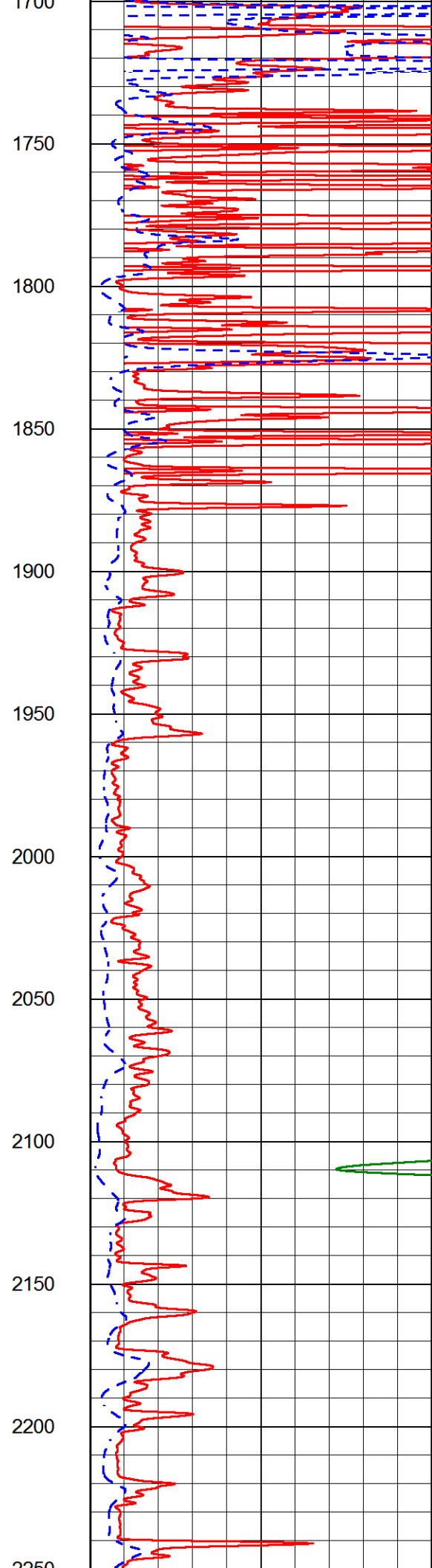
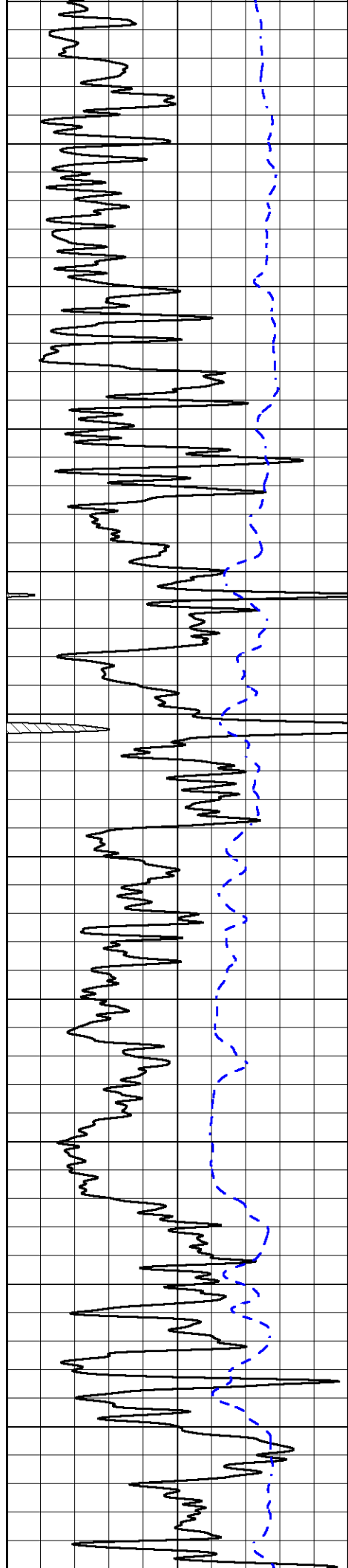


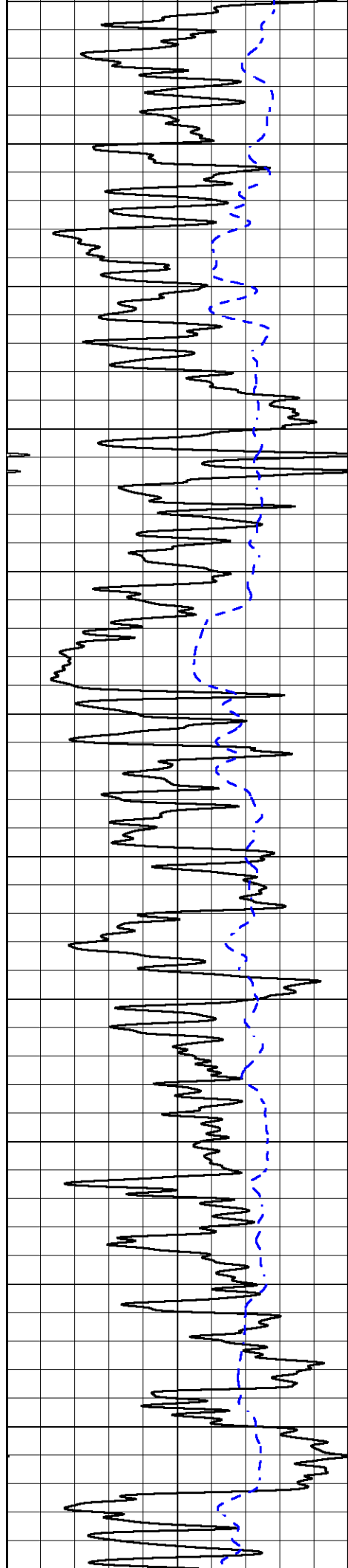


600  
650  
700  
750  
800  
850  
900  
950  
1000  
1050  
1100  
1150

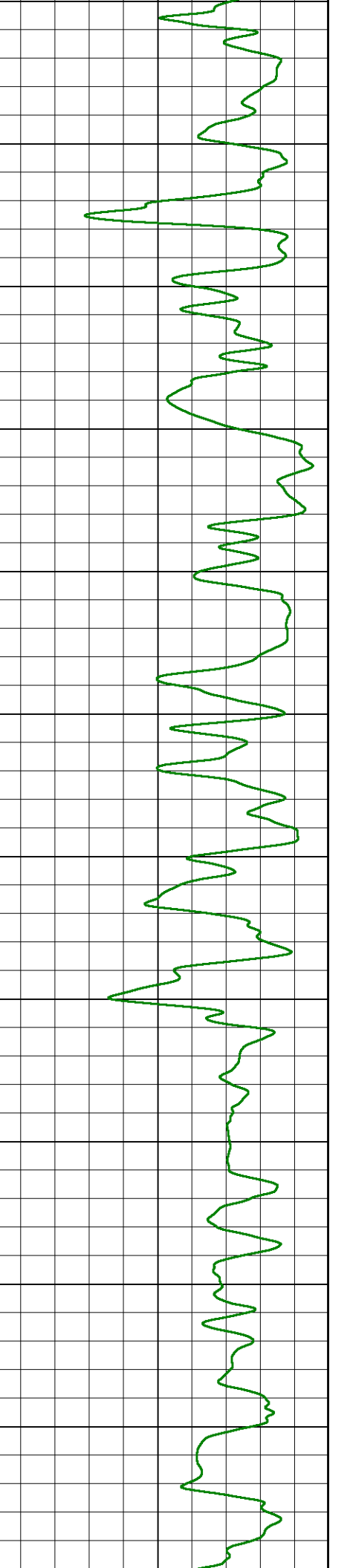
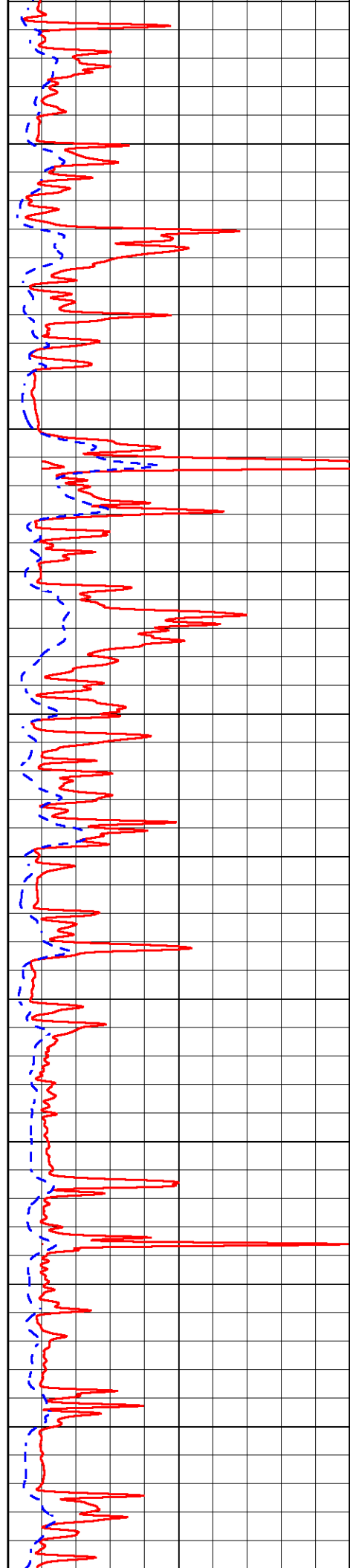


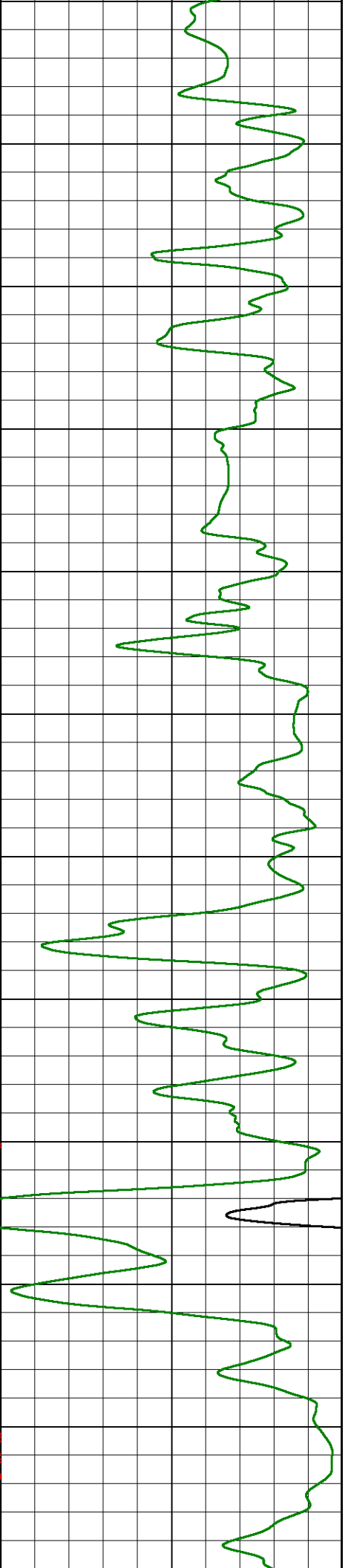
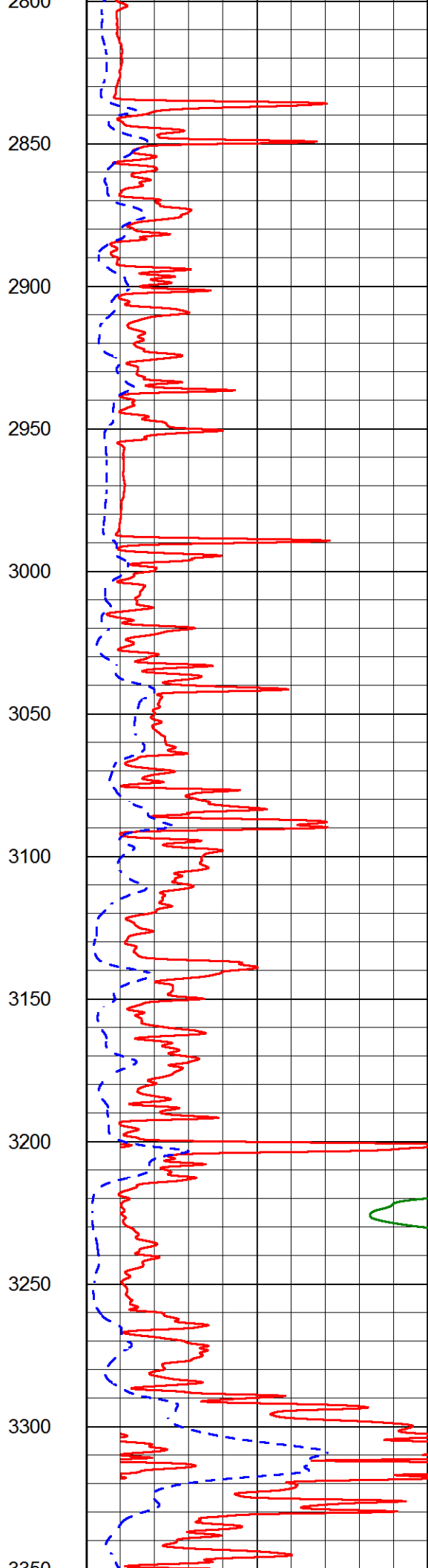
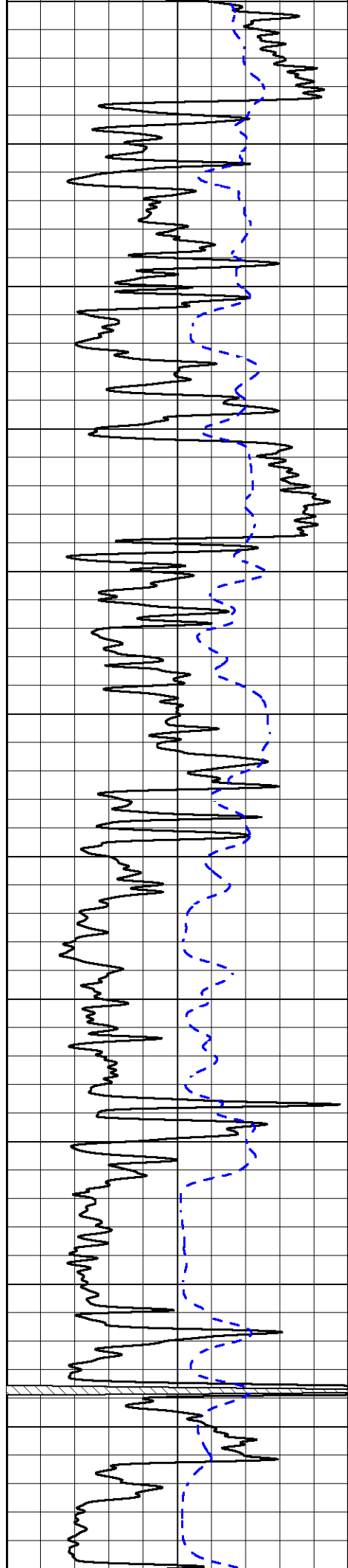


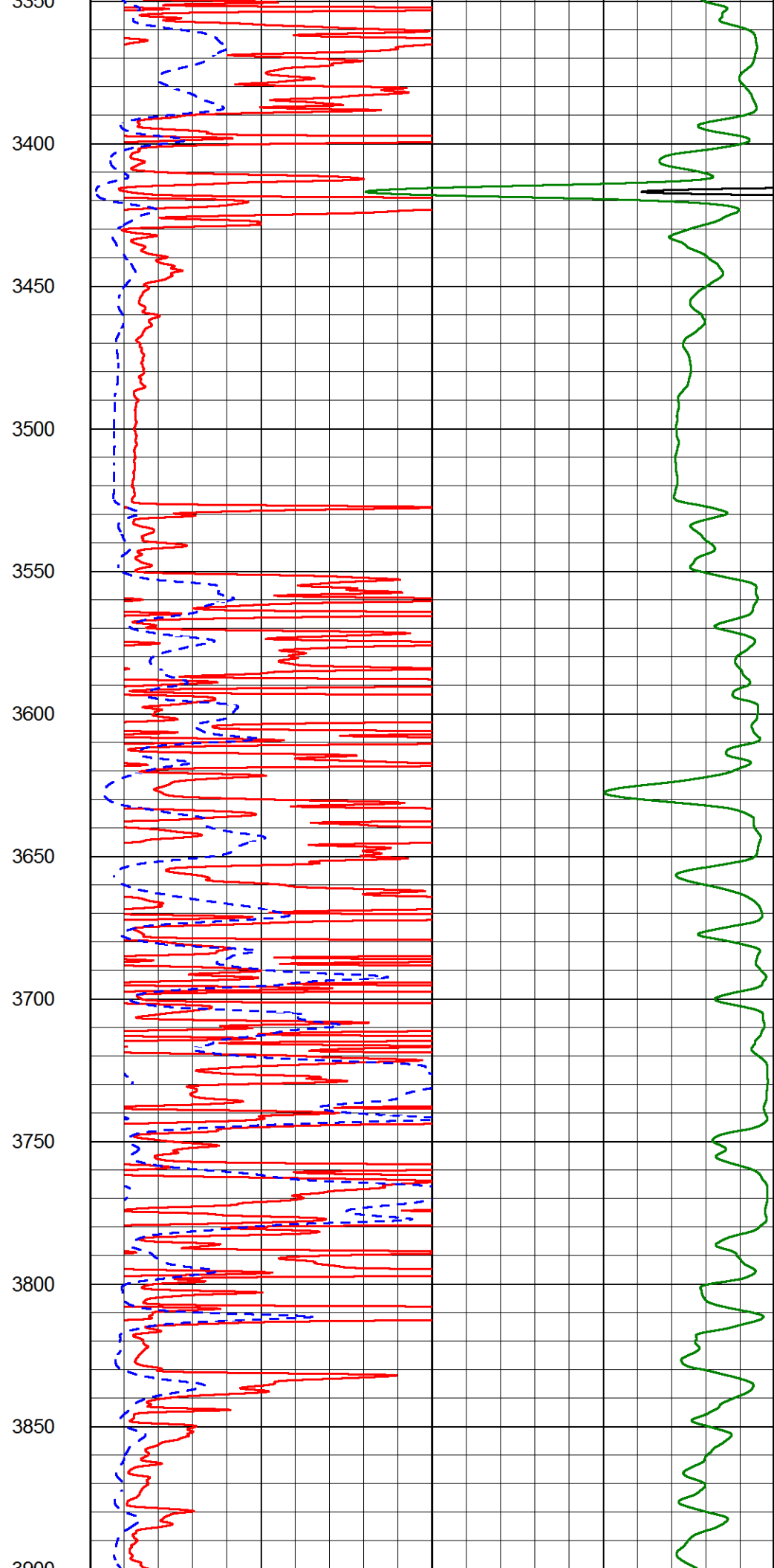
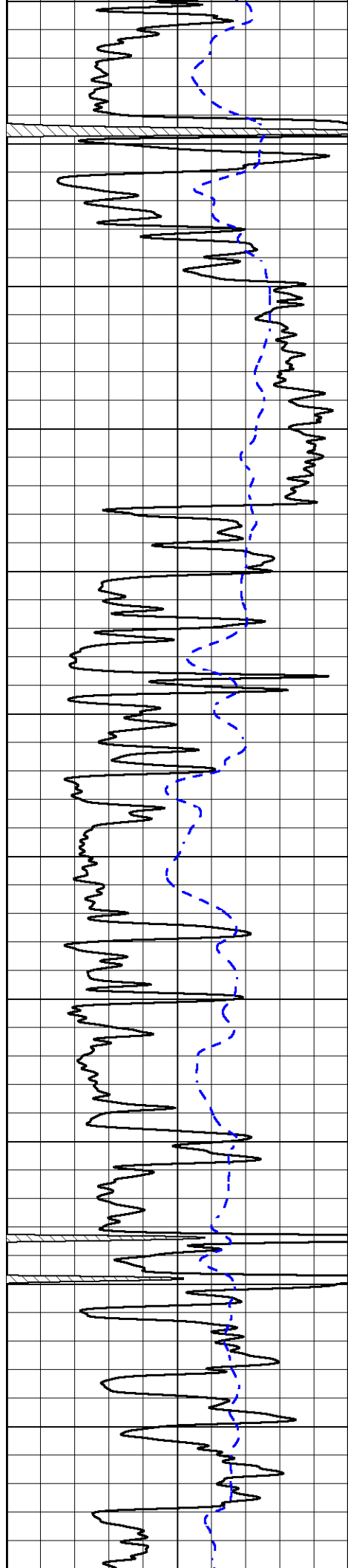


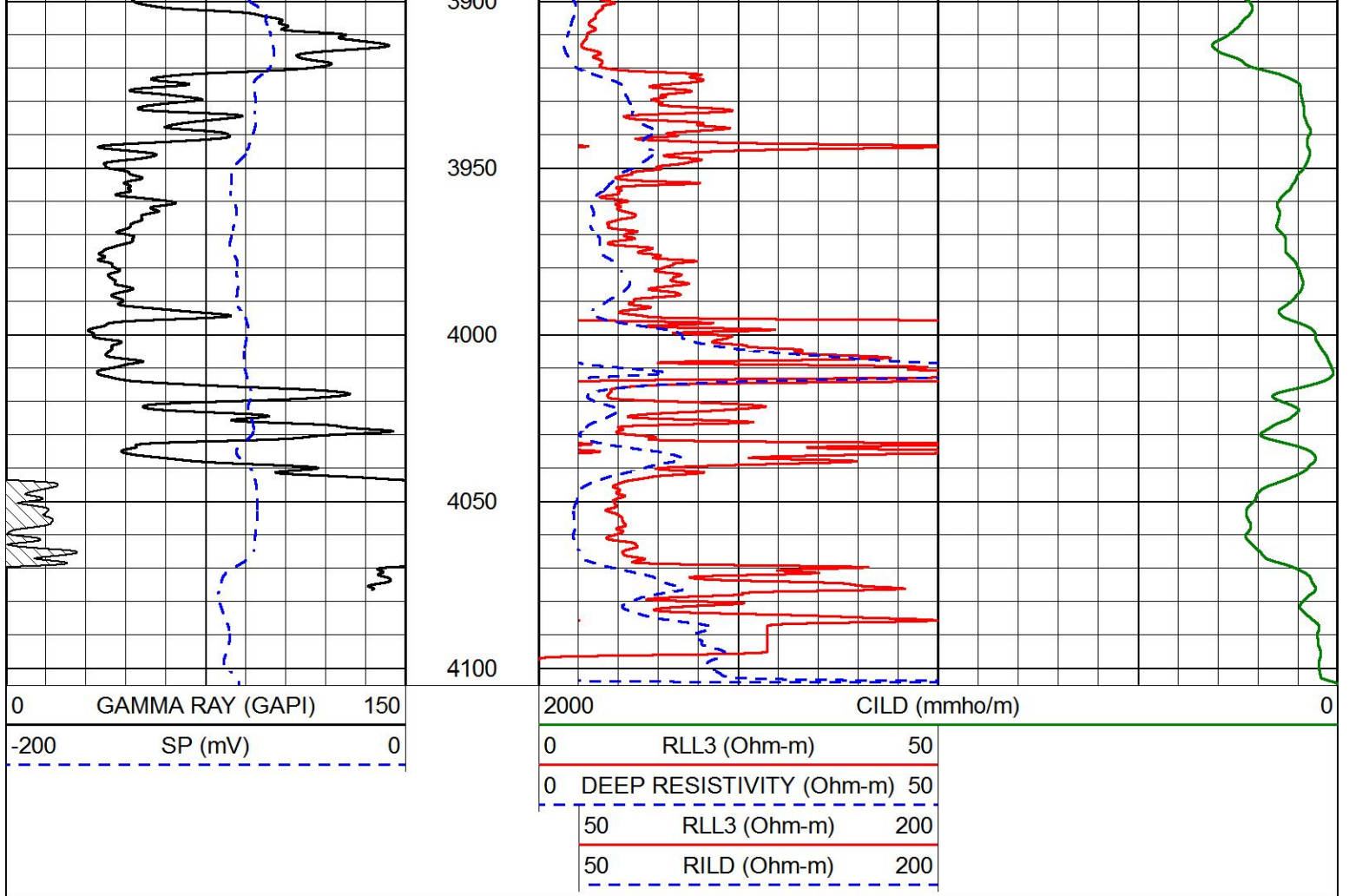


2250  
2300  
2350  
2400  
2450  
2500  
2550  
2600  
2650  
2700  
2750  
2800





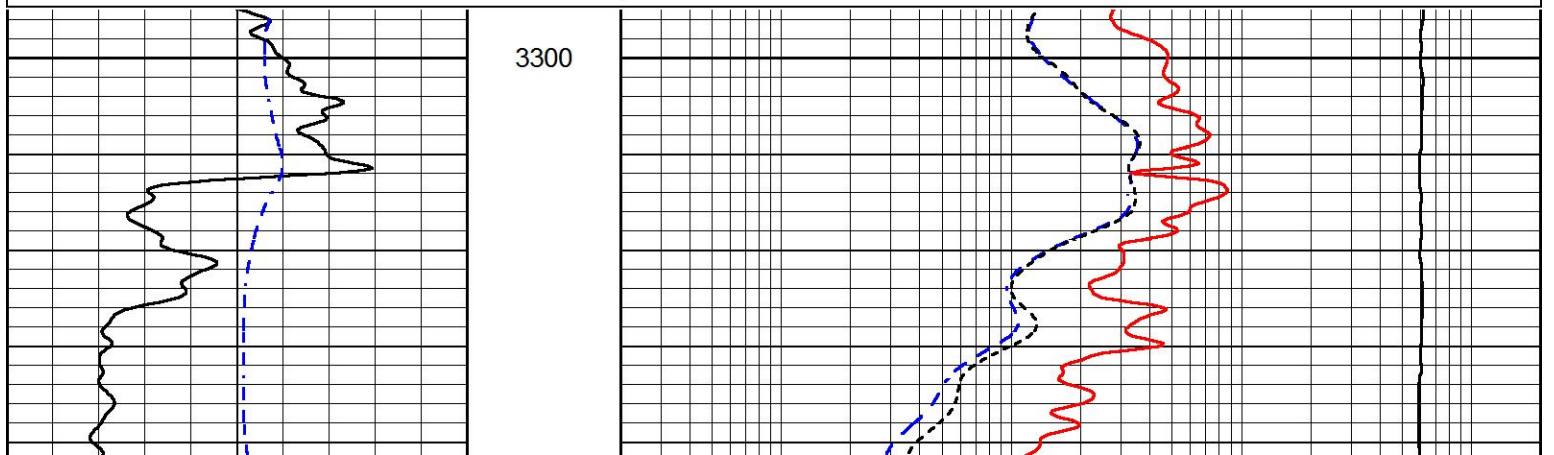
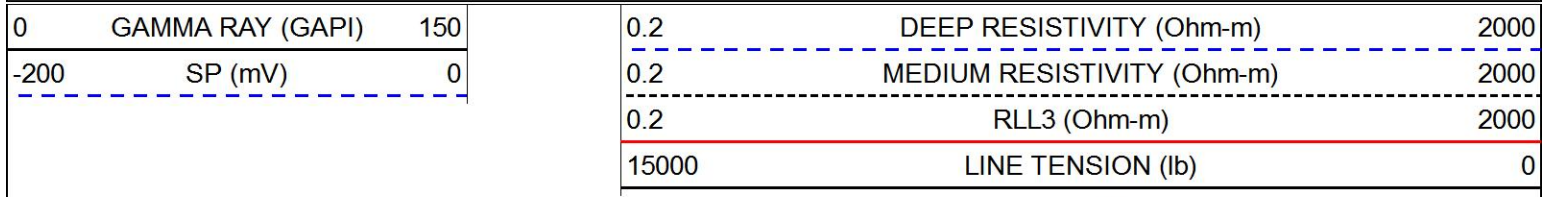


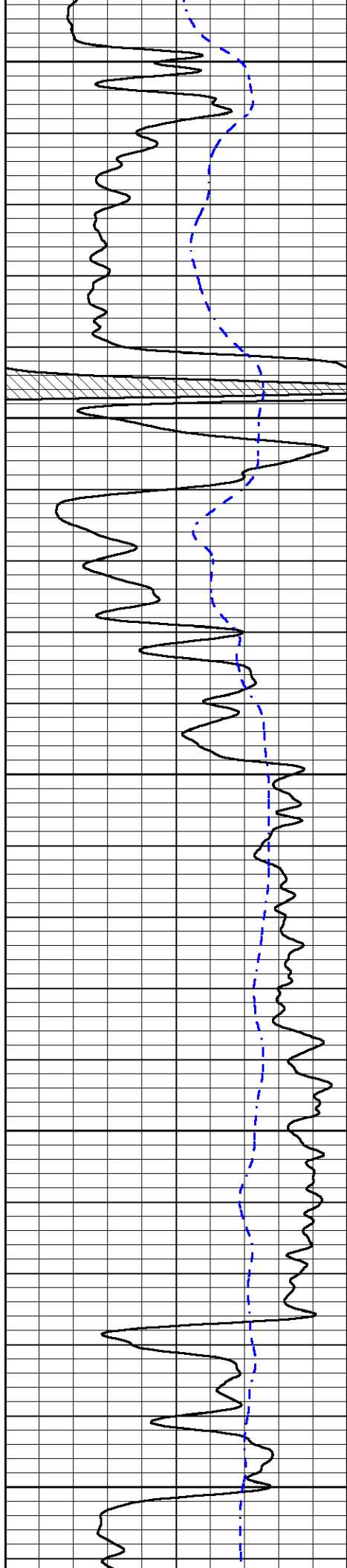


# DETAIL SECTION

## MAIN PASS

Database File: garner\_dudrey\_3\_6.db  
 Dataset Pathname: stack/pass4.1  
 Presentation Format: dil  
 Dataset Creation: Fri Jul 30 03:12:05 2021  
 Charted by: Depth in Feet scaled 1:240





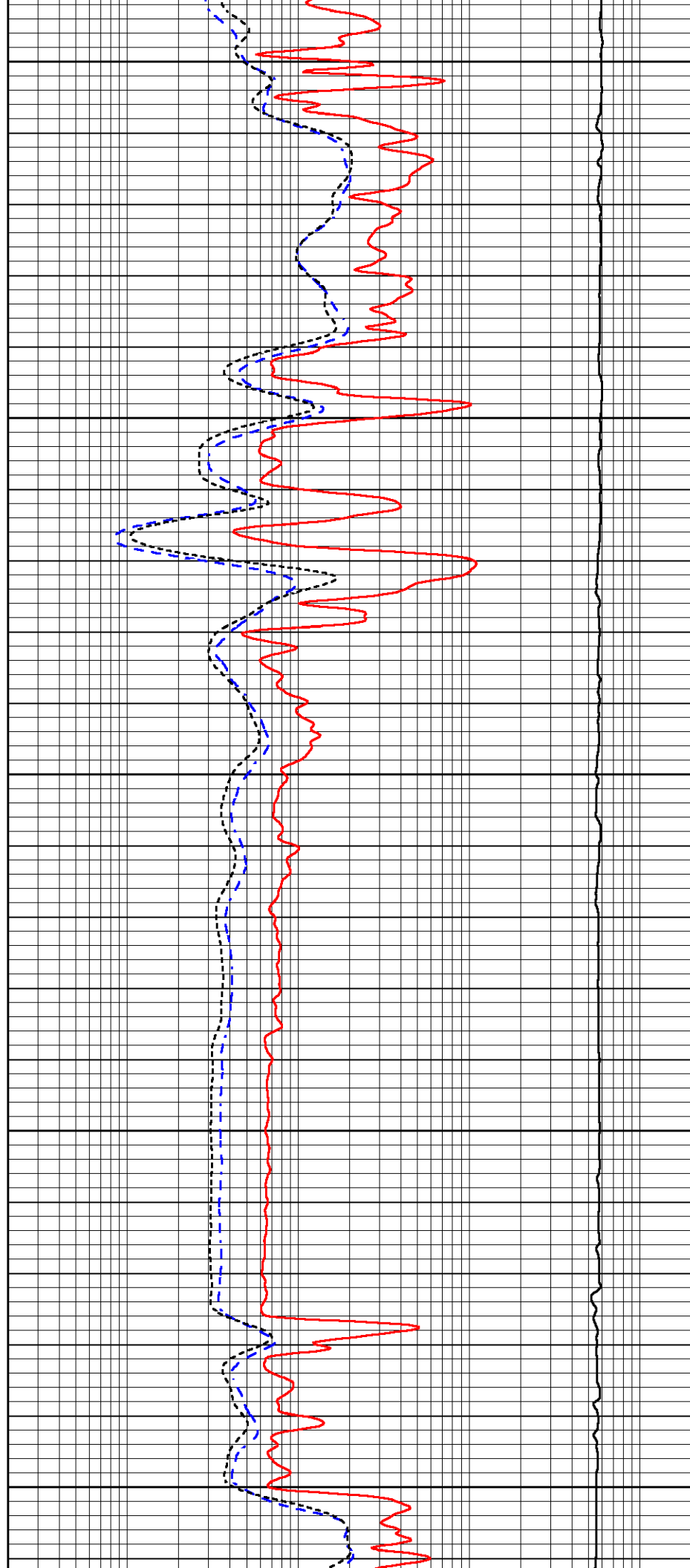
3350

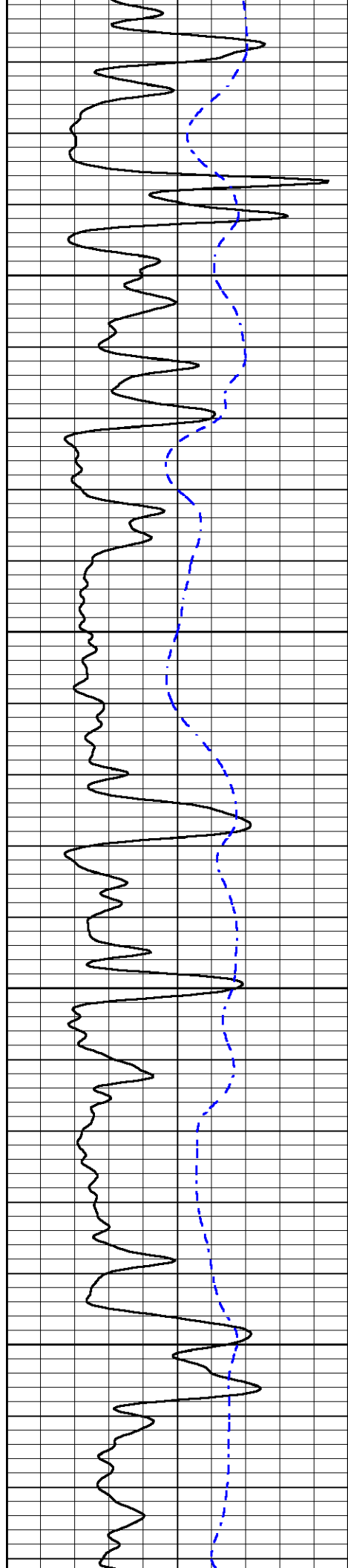
3400

3450

3500

3550



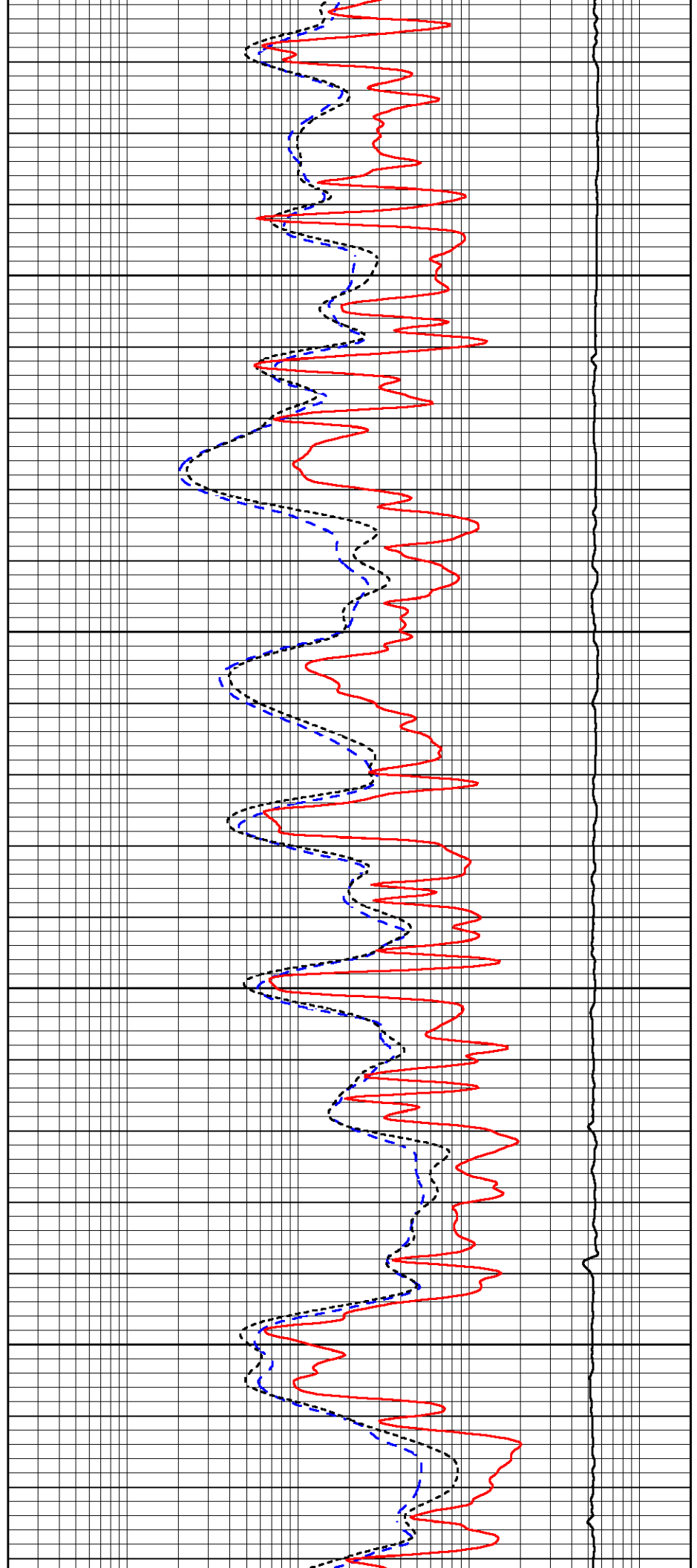


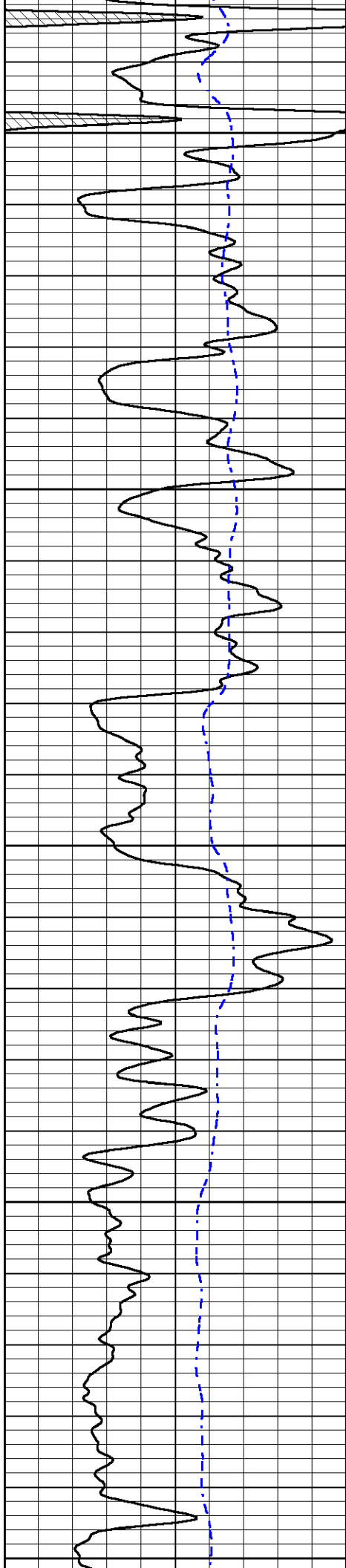
3600

3650

3700

3750





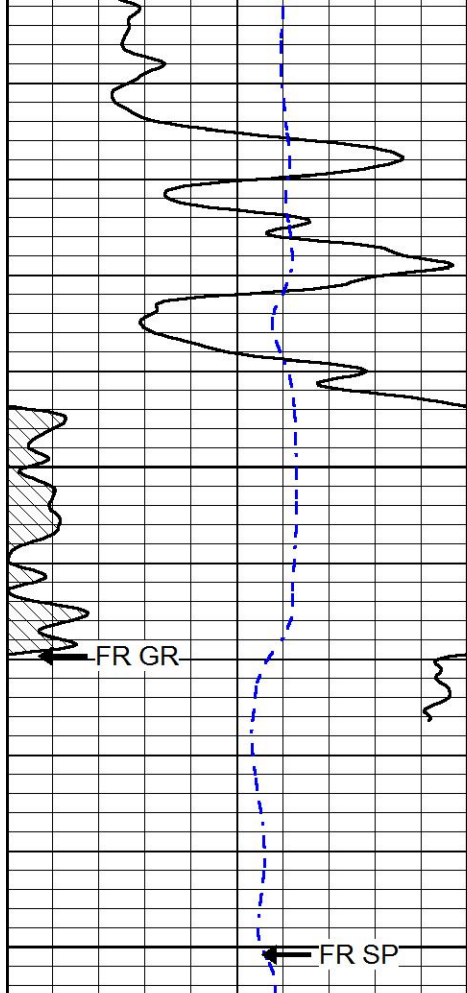
3800

3850

3900

3950

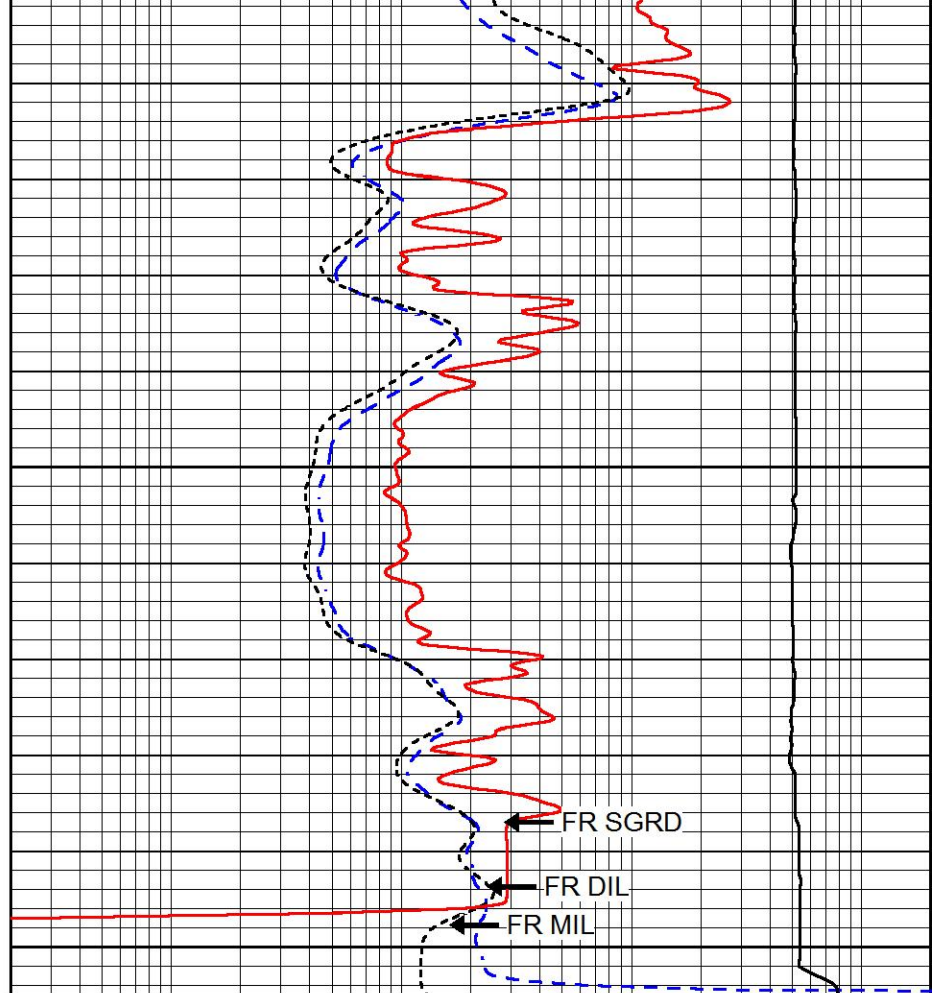
4000



4050

4100

0	GAMMA RAY (GAPI)	150
-200	SP (mV)	0



0.2	DEEP RESISTIVITY (Ohm-m)	2000
0.2	MEDIUM RESISTIVITY (Ohm-m)	2000
0.2	RLL3 (Ohm-m)	2000
15000	LINE TENSION (lb)	0



MIDWEST WIRELINE

## REPEAT SECTION

### REPEAT PASS

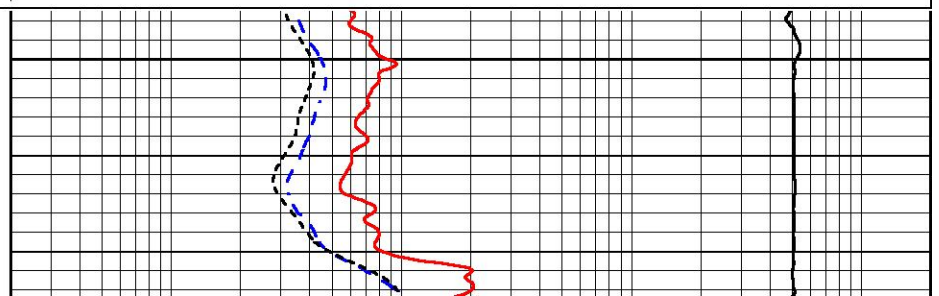
Database File      garner\_dudrey\_3\_6.db  
 Dataset Pathname    stack/pass2.1  
 Presentation Format    dil  
 Dataset Creation      Fri Jul 30 03:13:01 2021  
 Charted by            Depth in Feet scaled 1:240

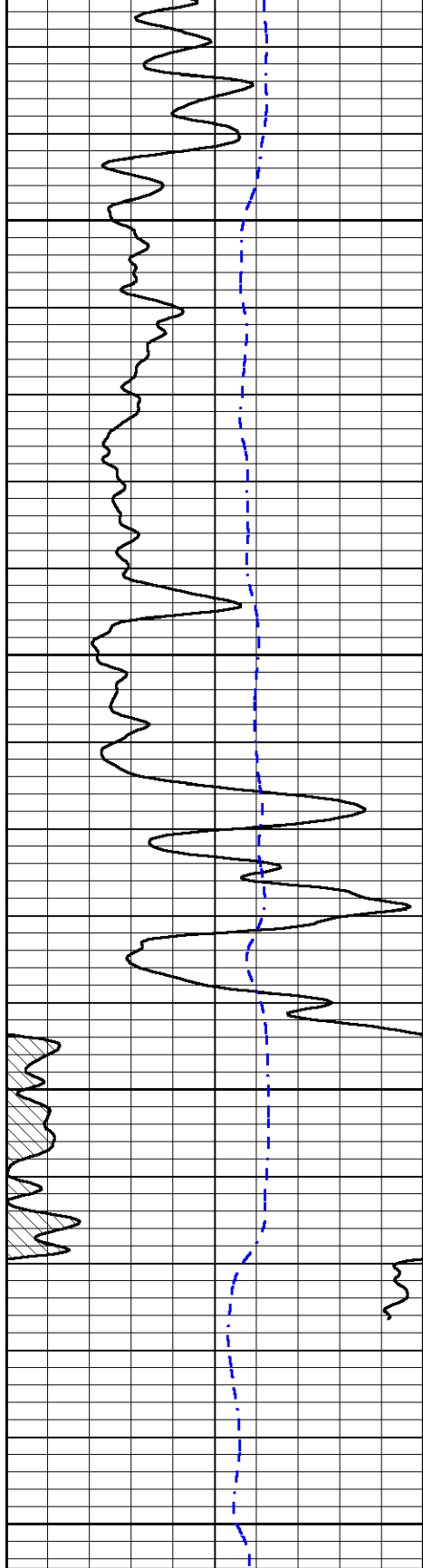
0	GAMMA RAY (GAPI)	150
-200	SP (mV)	0

0.2	DEEP RESISTIVITY (Ohm-m)	2000
0.2	MEDIUM RESISTIVITY (Ohm-m)	2000
0.2	RLL3 (Ohm-m)	2000
15000	LINE TENSION (lb)	0



3900





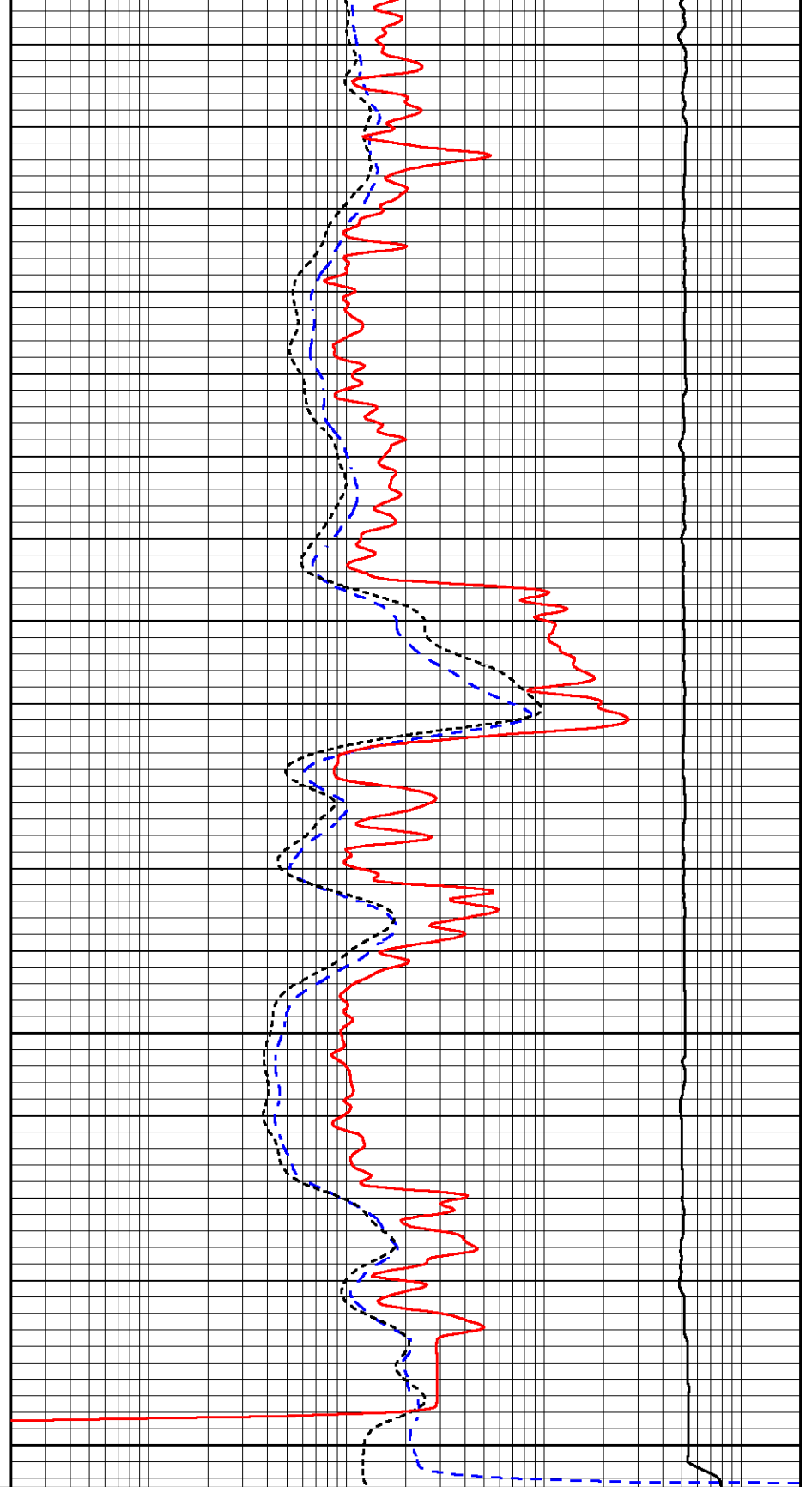
3950

4000

4050

4100

0	GAMMA RAY (GAPI)	150
-200	SP (mV)	0



0.2	DEEP RESISTIVITY (Ohm-m)	2000
0.2	MEDIUM RESISTIVITY (Ohm-m)	2000
0.2	RLL3 (Ohm-m)	2000
15000	LINE TENSION (lb)	0