



MIDWEST WIRELINE

BOREHOLE COMPENSATED SONIC LOG

Company Thomas Garner, Inc.
Well Dudrey #3-6
Field Merle
County Stafford **State** Kansas

Company Thomas Garner, Inc.
 Well Dudrey #3-6
 Field Merle
 County Stafford
 State Kansas

Location: 330' FNL & 1000' FEL SEC 6 TWP 24S RGE 13W	API #: 15-185-24084-00-00 Other Services DIL/MEL CNL/CDL
Permanent Datum Log Measured From Drilling Measured From	Ground Level Kelly Bushing Kelly Bushing
	Elevation 1914' K.B. 1925' D.F. N/A G.L. 1914'

Date	7/30/2021						
Run Number	Two						
Type Log	BHGS						
Depth Driller	4105'						
Depth Logger	4102'						
Bottom Logged Interval	4091'						
Top Logged Interval	350'						
Type Fluid In Hole	Chemical						
Salinity, PPM CL	10,000						
Density	9.1						
Level	Full						
Max. Rec. Temp. F	117 Deg/F						
Operating Rig Time	3 Hours						
Equipment -- Location	P-108 HAYS						
Recorded By	J. Henrickson						
Witnessed By	Keith Reavis						
Borehole Record							
Run No.	Bit	From	To	Size	Wgt.	Casing Record	
One	12.25"	0	385'	8.625"	24#	From	To
Two	7.875"	385'				0	385'

<<< Fold Here >>>

All interpretations are opinions based on inferences from electrical or other measurements and Midwest Wireline LLC cannot and does not guarantee the accuracy or correctness of any interpretation, and Midwest Wireline LLC will not be liable or responsible for any loss, costs, damages, or expenses incurred or sustained by anyone resulting from any interpretation made by any of our officers, agents or employees.

Comments

N/A DENOTES NOT AVAILABLE OR NON-APPLICABLE.

St. John Kansas
 2 West on NE 30th, 1/8 South on 20th, West Into

Log Measured From: Kelly Bushing 11 Ft. Above Permanent Datum

THANK YOU FOR USING MIDWEST WIRELINE LLC
 785-625-3858

Your Midwest Wireline Crew

Engineer: J. Henrickson
 Operator:
 Operator:
 Operator:

This Log Record Was Witnessed By


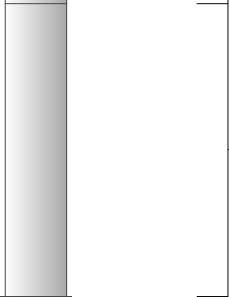
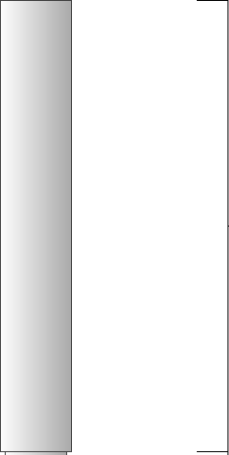

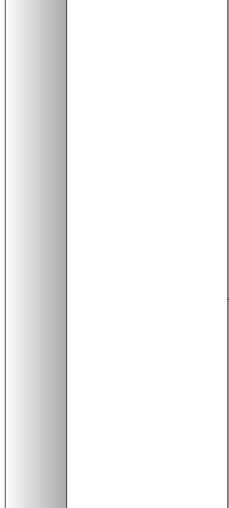
Primary Witness: Keith Reavis
 Secondary Witness:
 Secondary Witness:
 Secondary Witness:

Log Variables

DatabaseC:\ProgramData\Warrior\Data\garner_dudrey_3_6.db
 Dataset field/well/stack/pass4.1/_vars_

Top - Bottom

A	BOREID in	BOTTEMP degF	CASEOD in	CASETHCK in	FLUIDDEN g/cc	M	MATRXDEN g/cc
1	7.875	113	5.5	0	1	2	2.71
NPORSEL	PERFS	SNDERR mmho/m	SNDERRM mmho/m	SPSHIFT mV	SRFTEMP degF	SZCOR	TDEPTH ft
Limestone	0	-5	0	640	82	Off	4102

Sensor	Offset (ft)	Schematic	Description	Length (ft)	O.D. (in)	Weight (lb)
GR	33.00		GR-M&W (89-M&W)	3.00	3.50	50.00
CNLSC CNSSC	29.90 29.15		CNT-M&W (10-PSI)	5.50	3.50	100.00
LSD DCAL SSD	20.85 20.83 20.35		CDL-M&W (915-956)	8.50	4.00	250.00
RLL3F RLL3	15.80 15.80					
CILD	8.00		DIL-PSI HIGH TEMP (959-1032)	18.50	3.50	220.00

CILM 4.70

SP 0.20

Dataset: garner_dudrey_3_6.db: field/well/stack/pass4.1
 Total length: 35.50 ft
 Total weight: 620.00 lb
 O.D.: 4.00 in



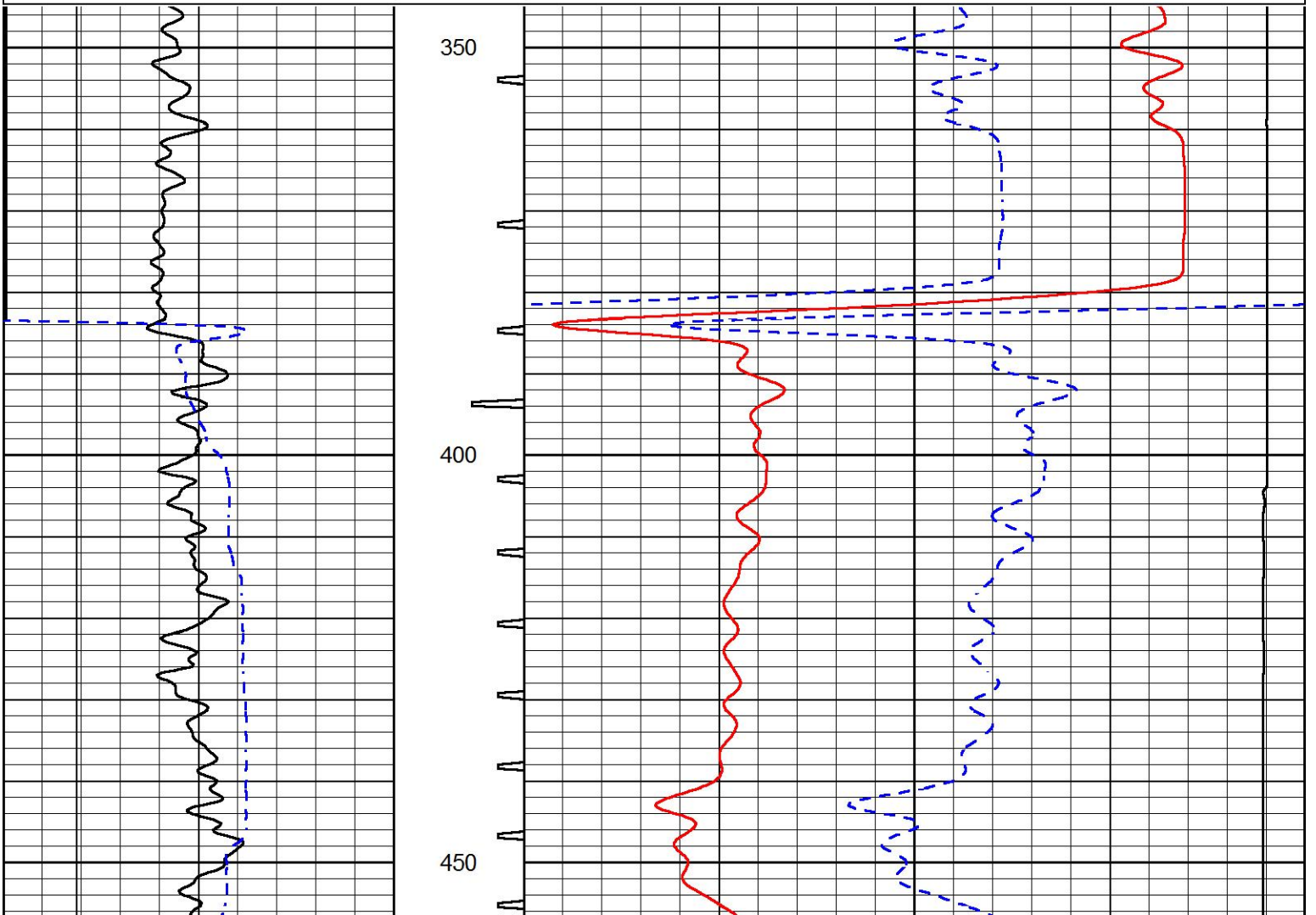
MIDWEST WIRELINE

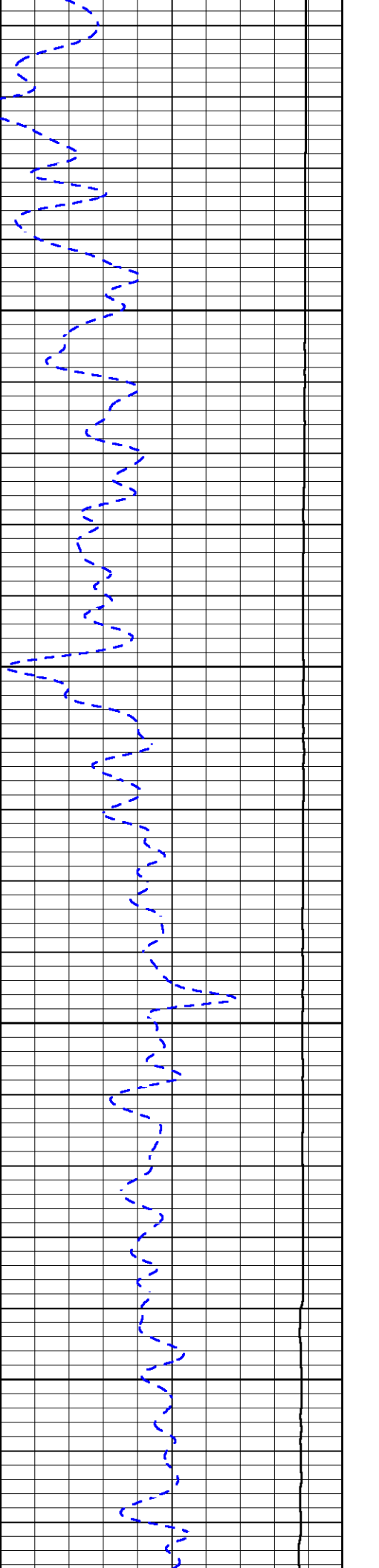
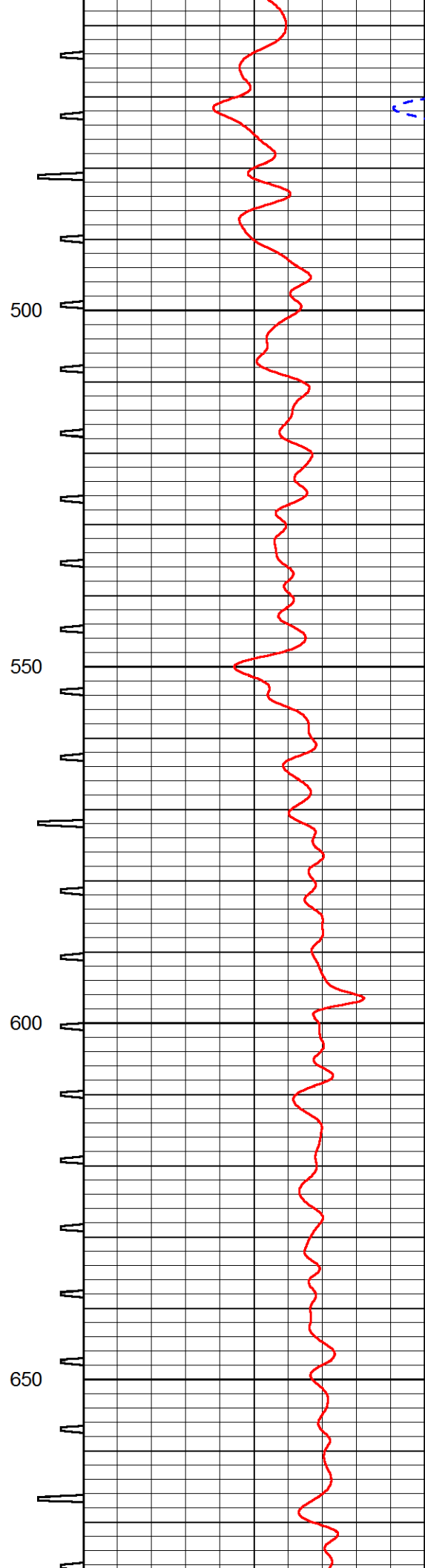
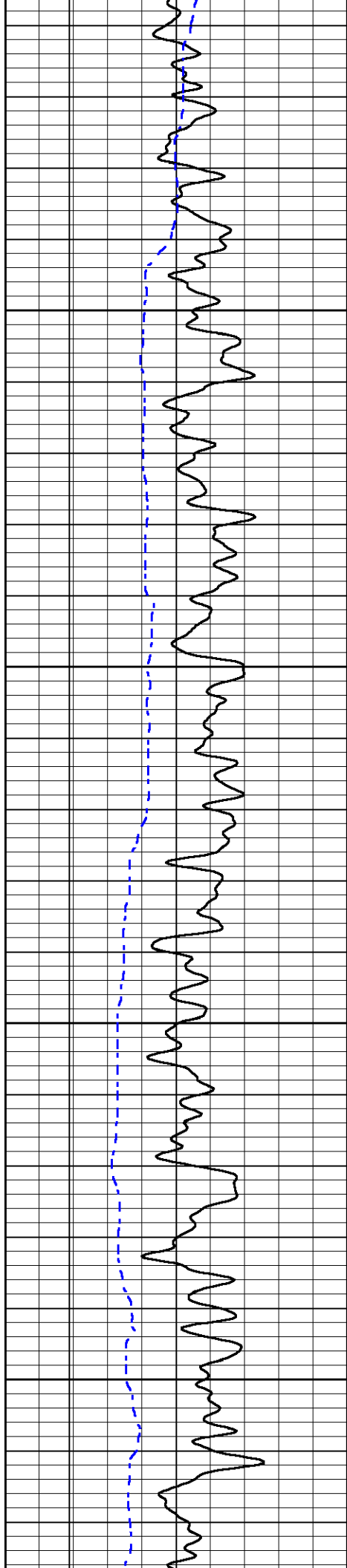
DETAIL SECTION

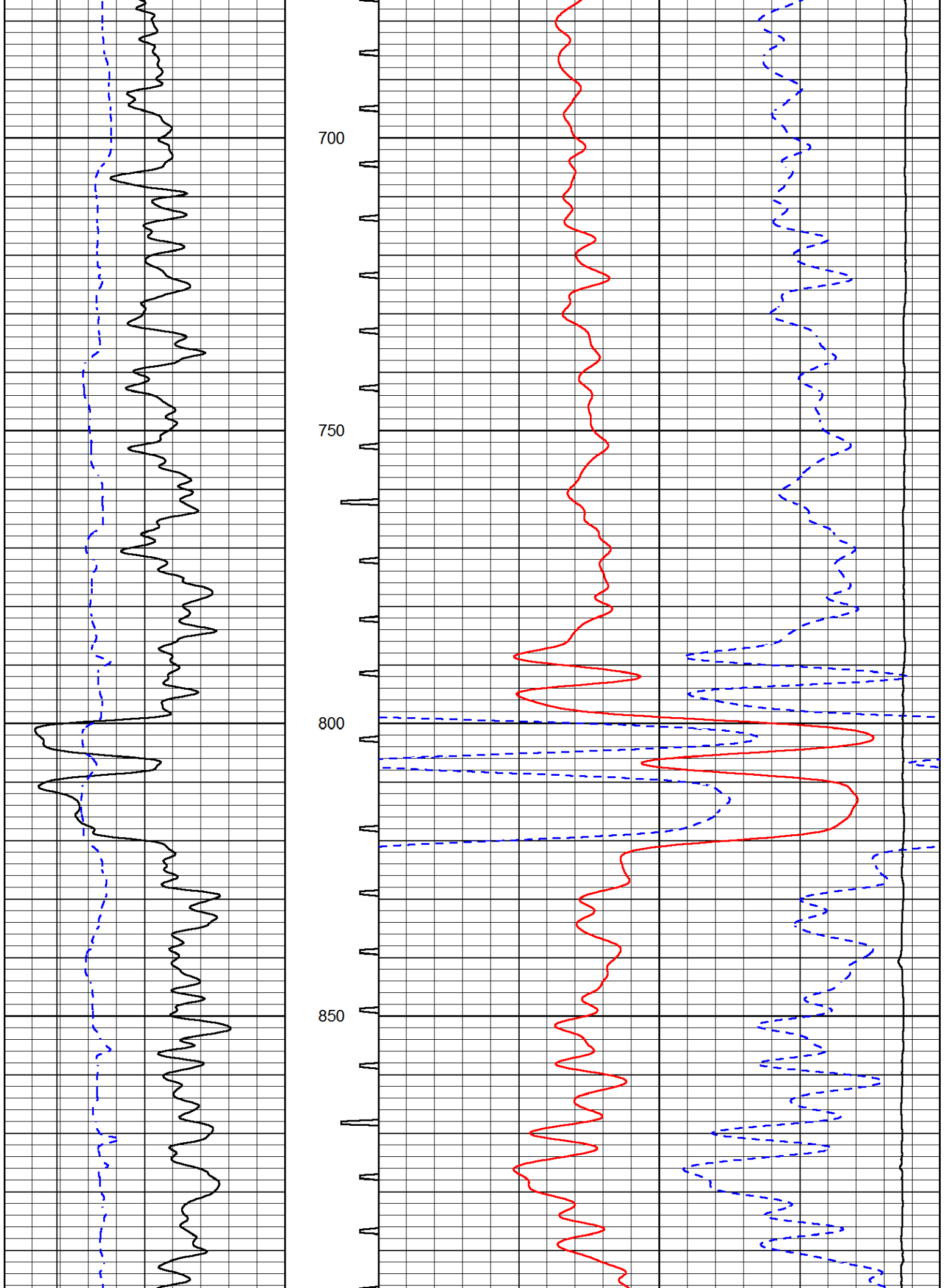
MAIN PASS

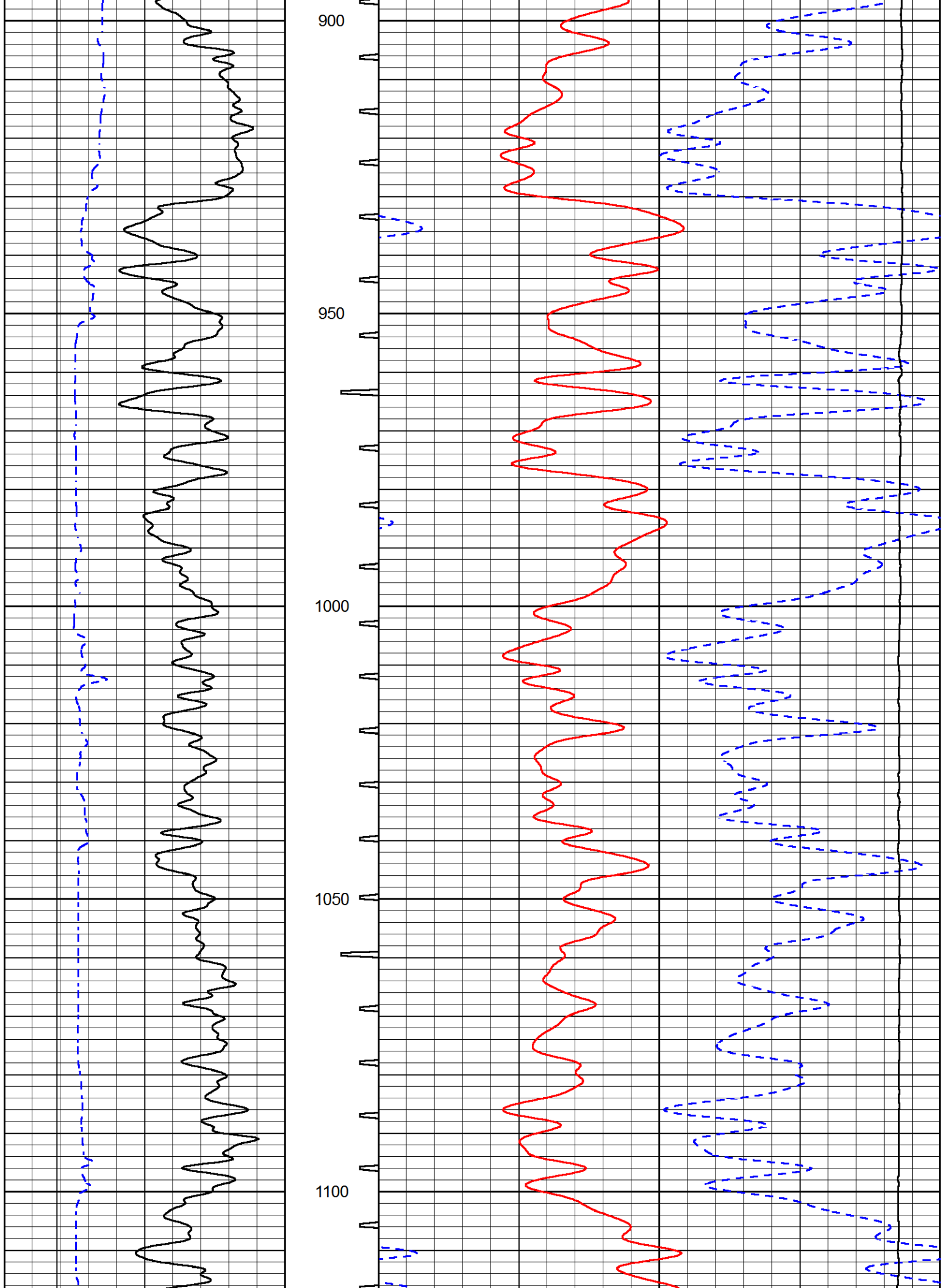
Database File garner_dudrey_3_6.db
 Dataset Pathname stack/pass6.1
 Presentation Format sonic
 Dataset Creation Fri Jul 30 04:47:00 2021
 Charted by Depth in Feet scaled 1:240

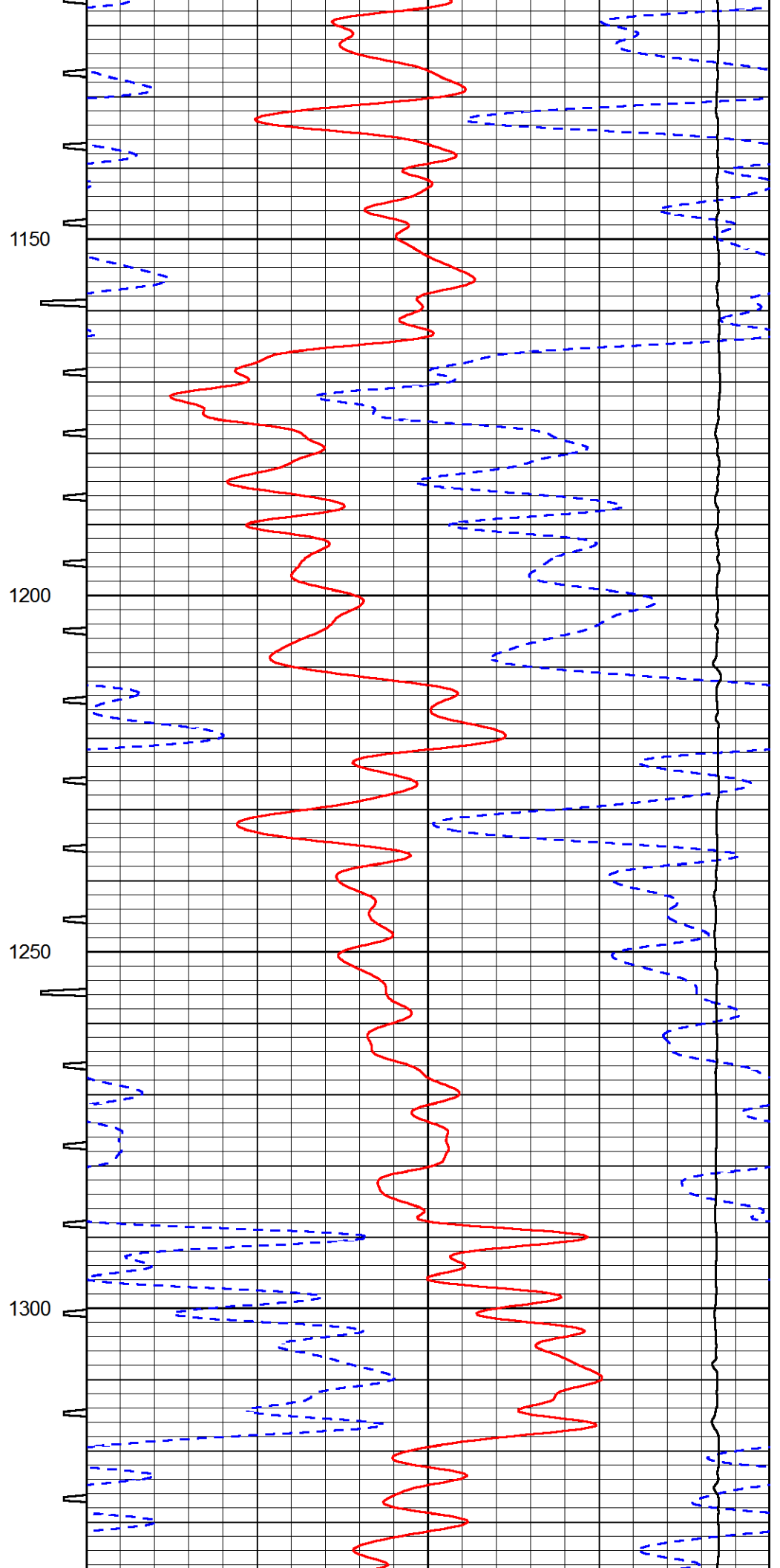
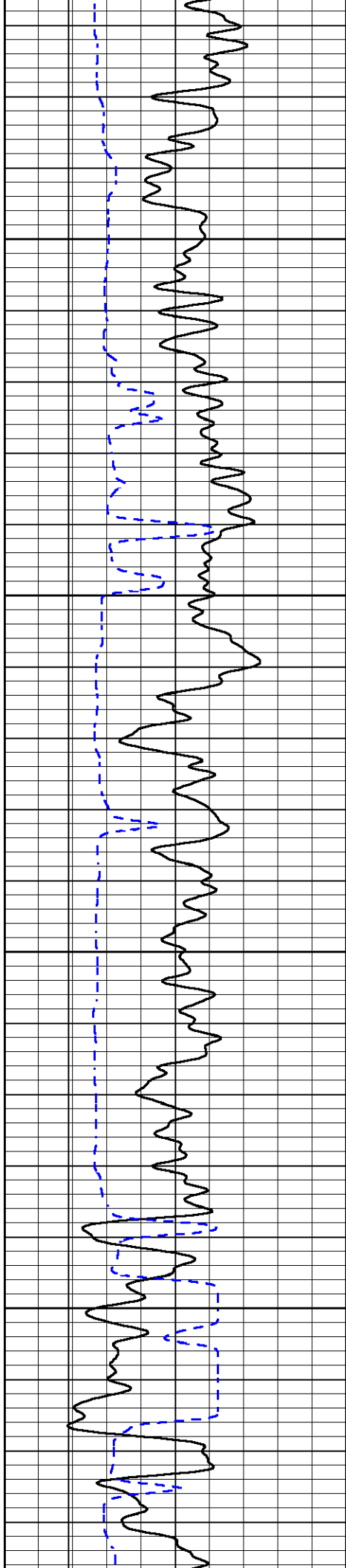
0	GAMMA RAY (GAPI)	150	SONIC INT	140	DELTA TIME (usec/ft) (usec/ft)	40
6	CALIPER (in)	16	TRAVEL TIME	30	SONIC POROSITY (pu)	-10
6	BIT SIZE	16	(msec)	15000	LINE TENSION (lb)	0

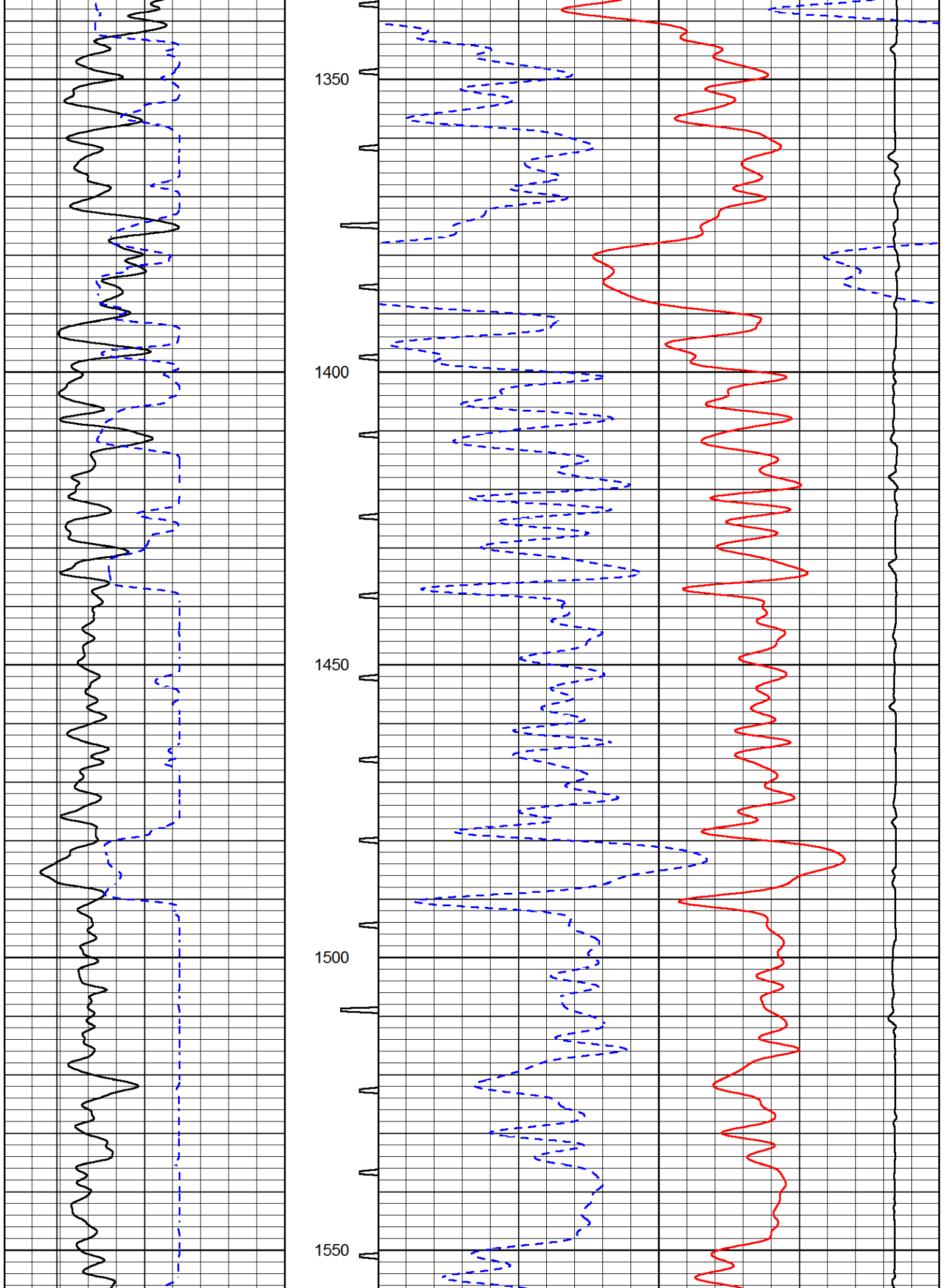


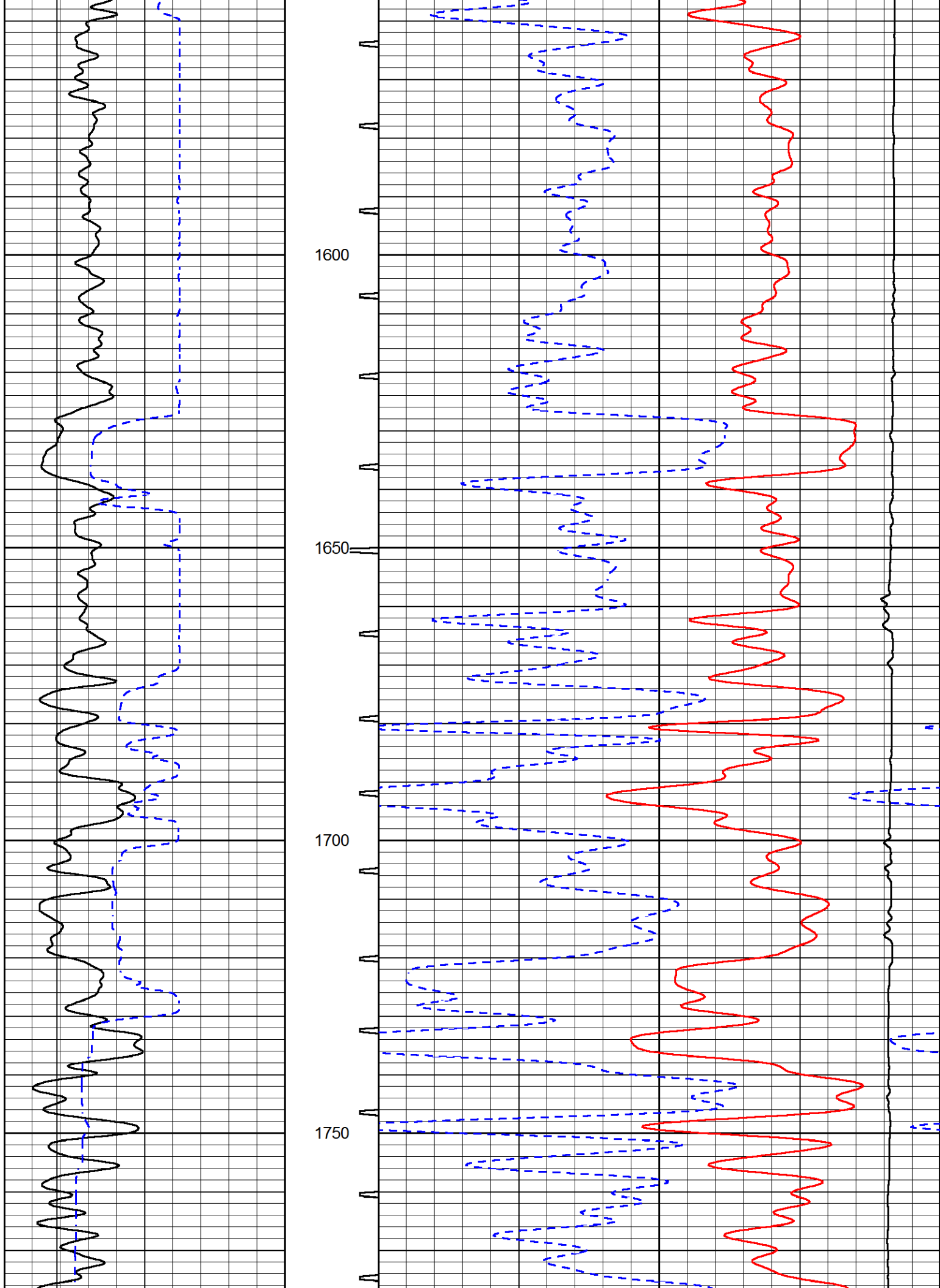


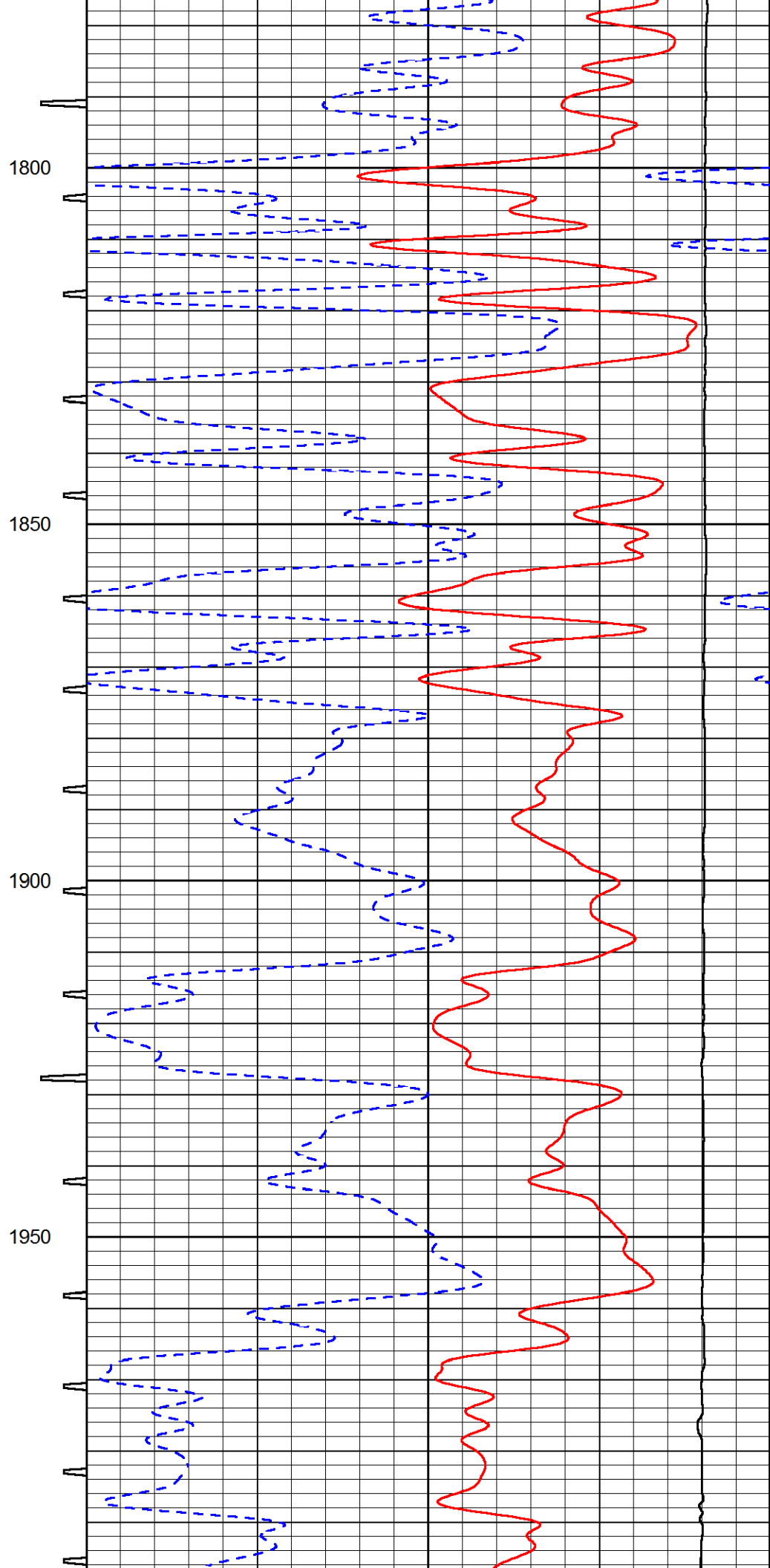
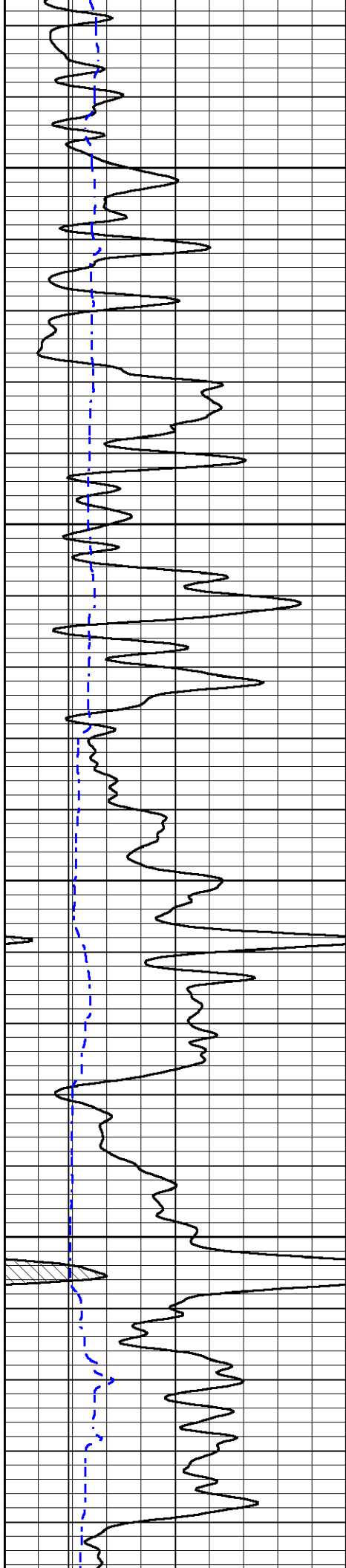


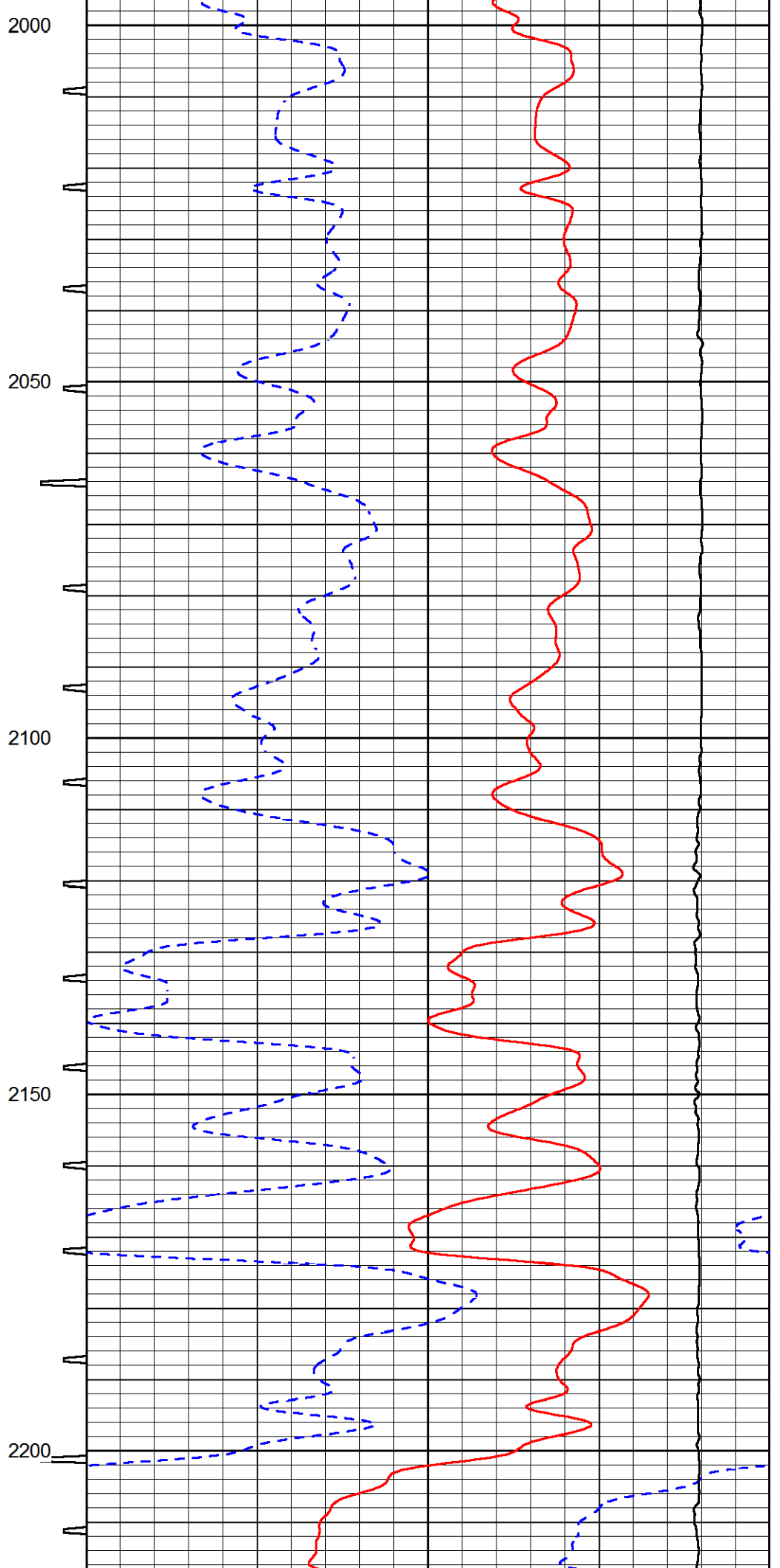
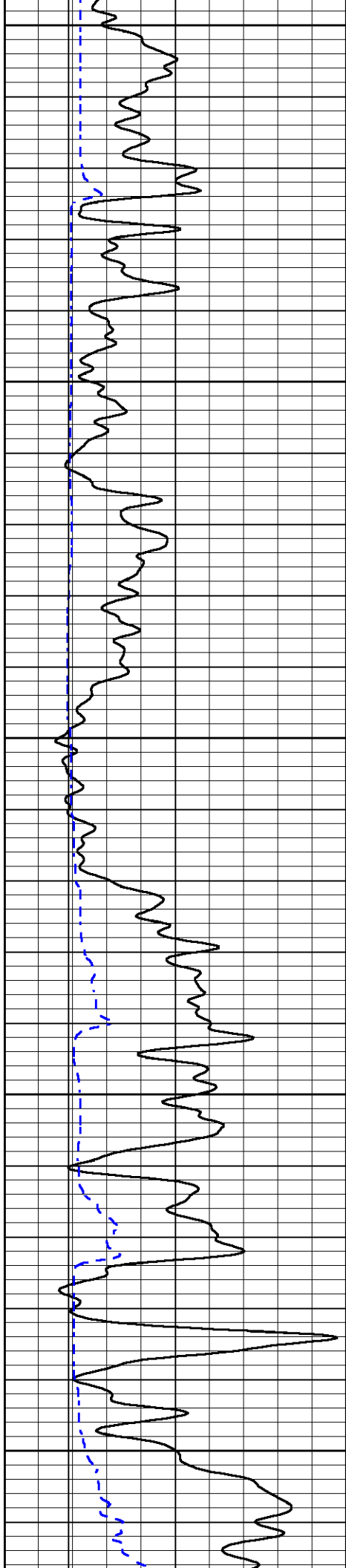


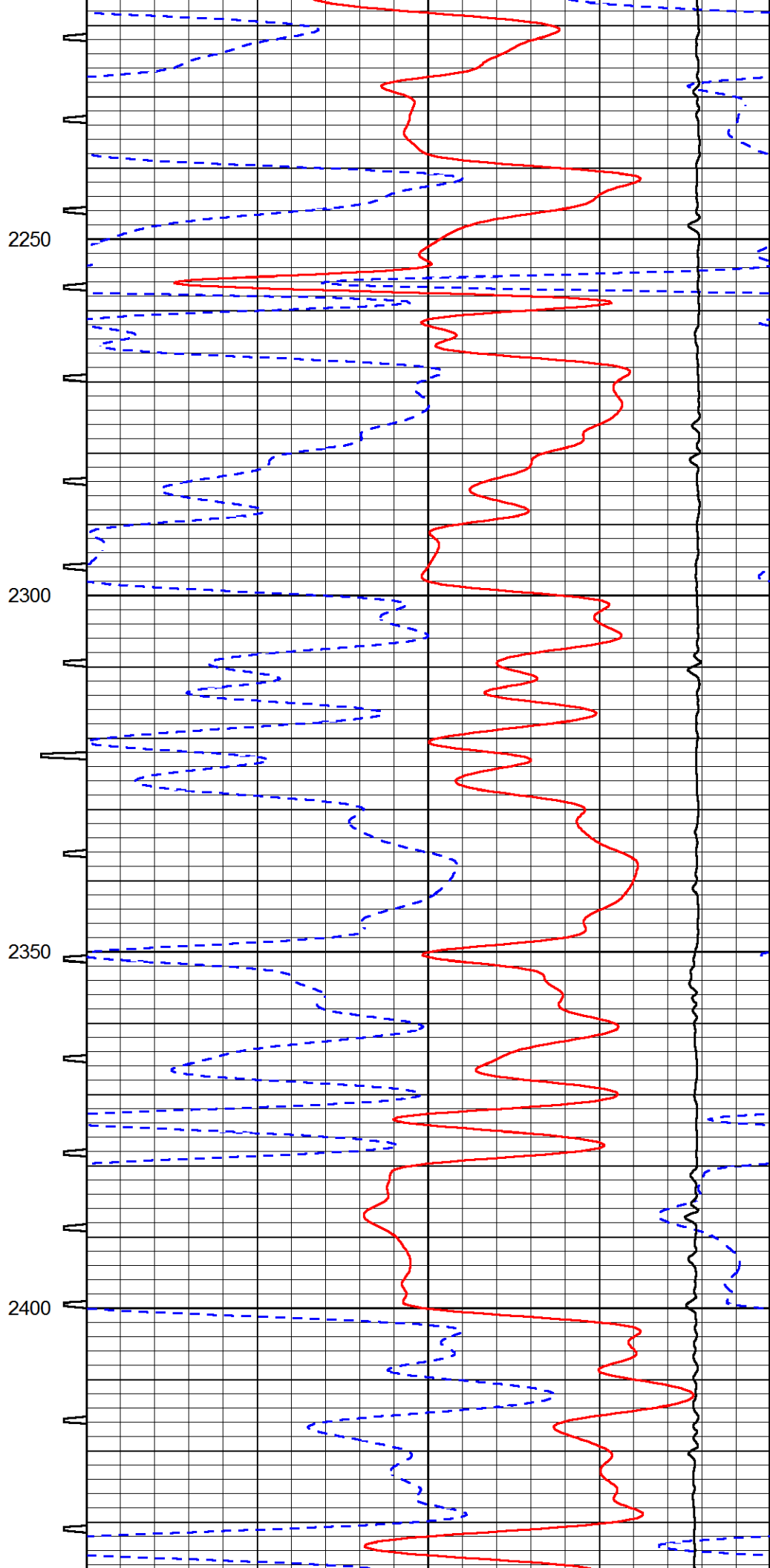
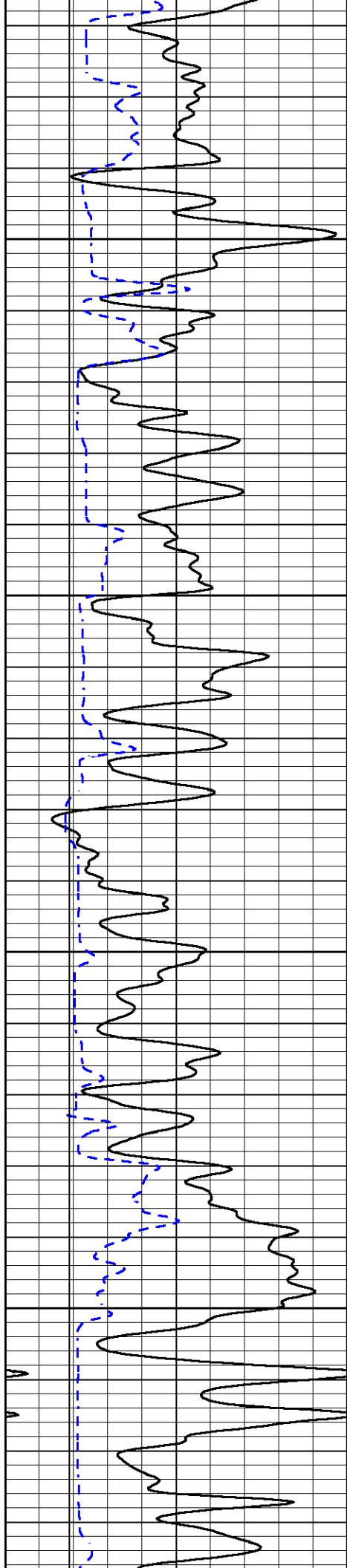


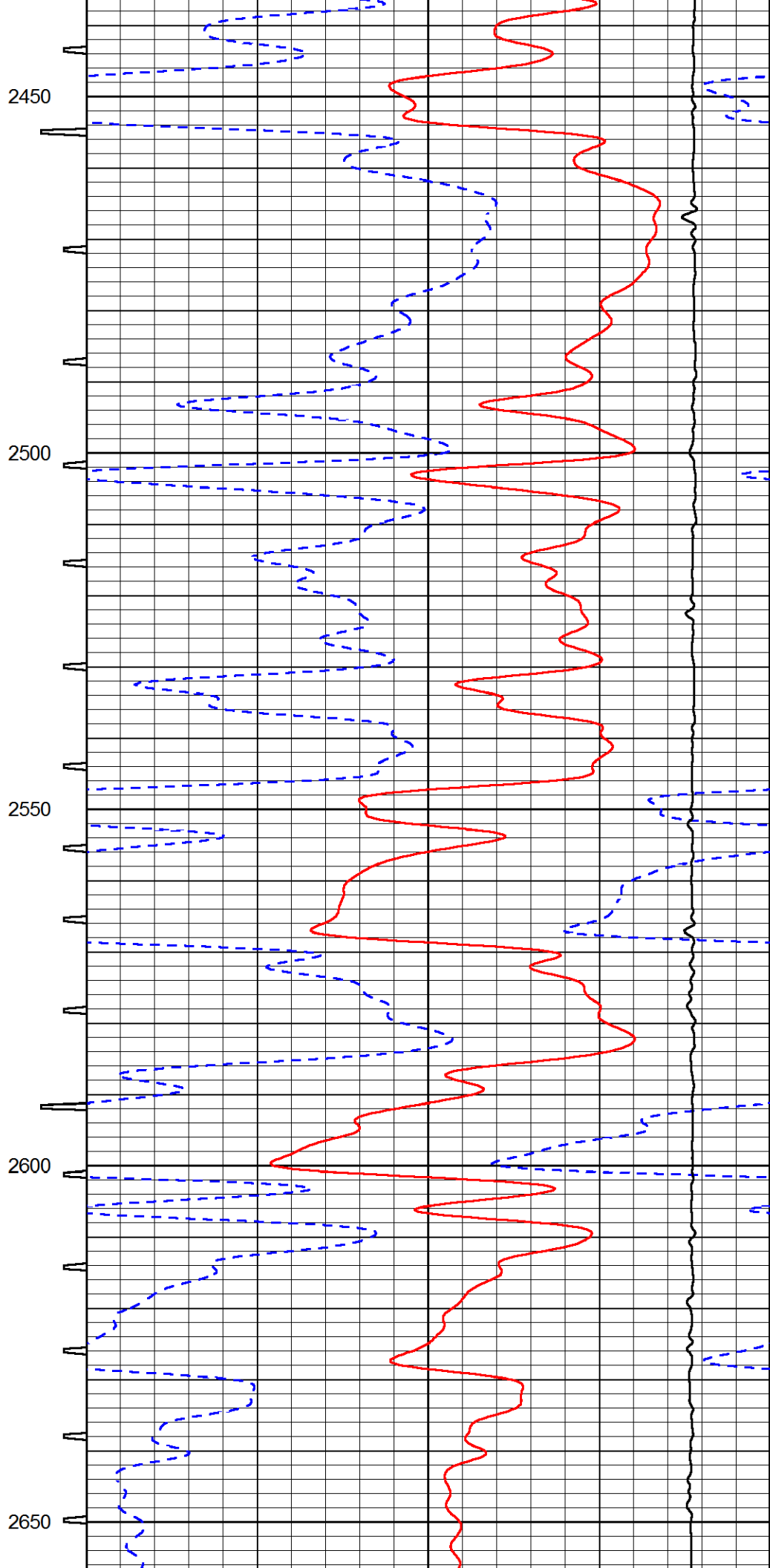
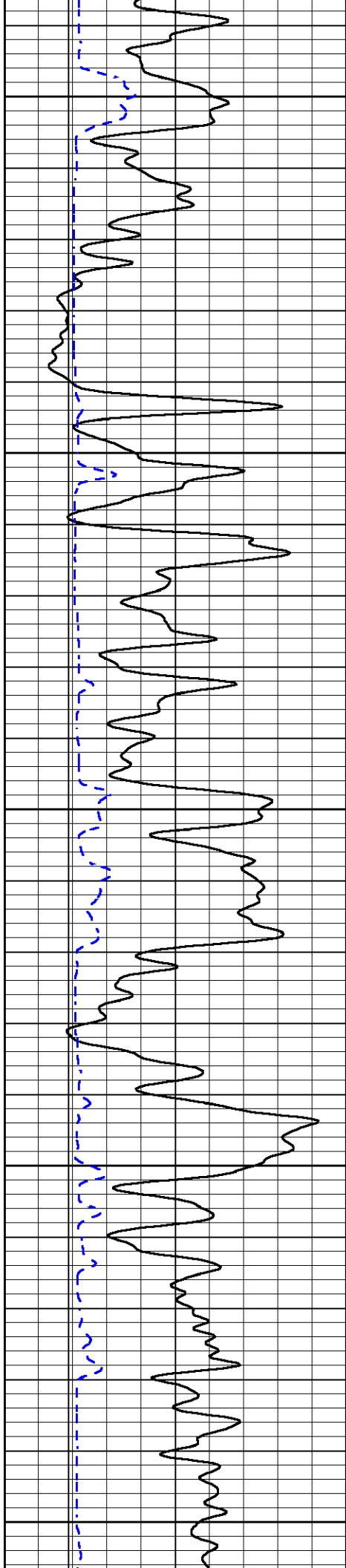


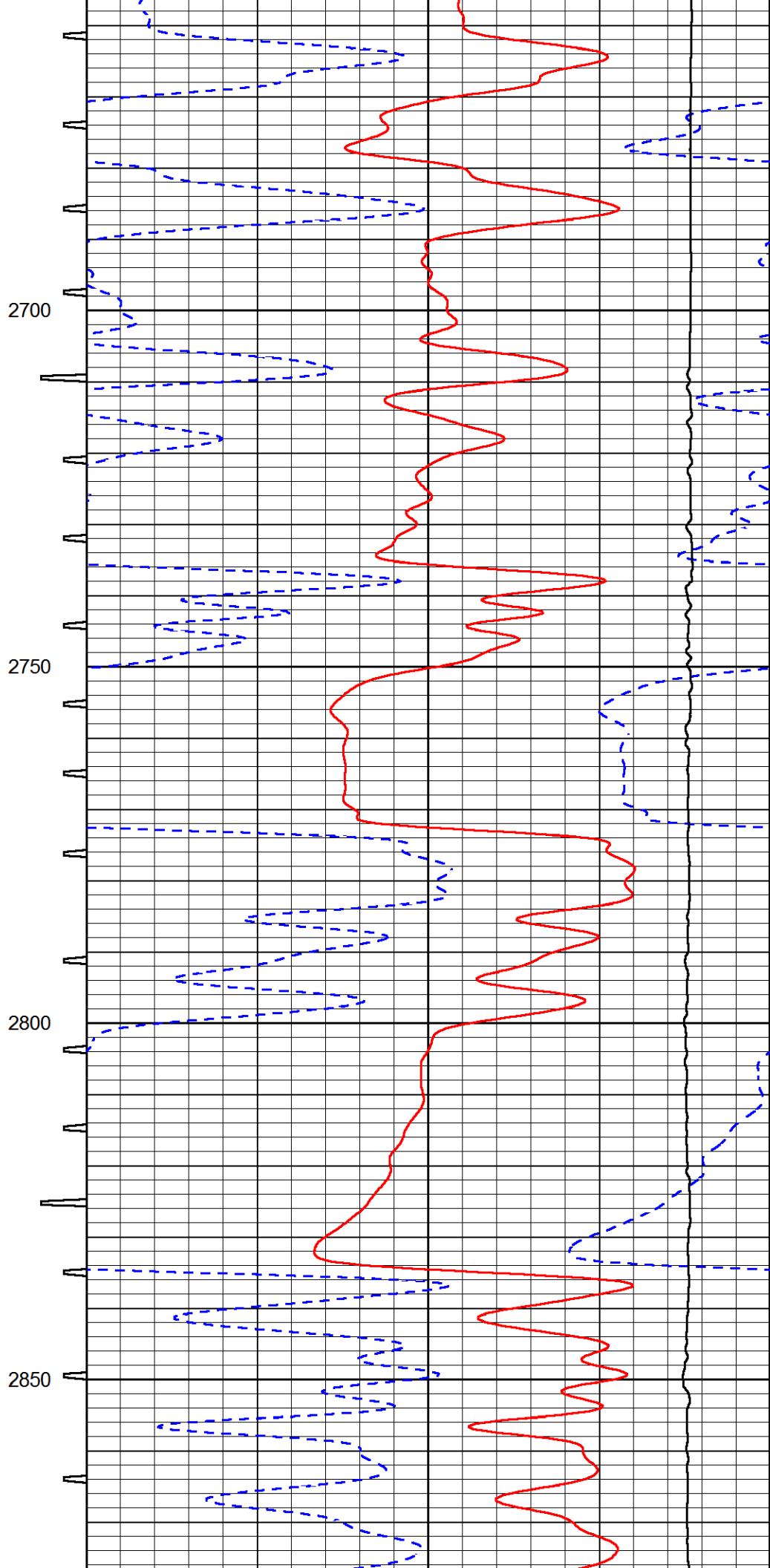
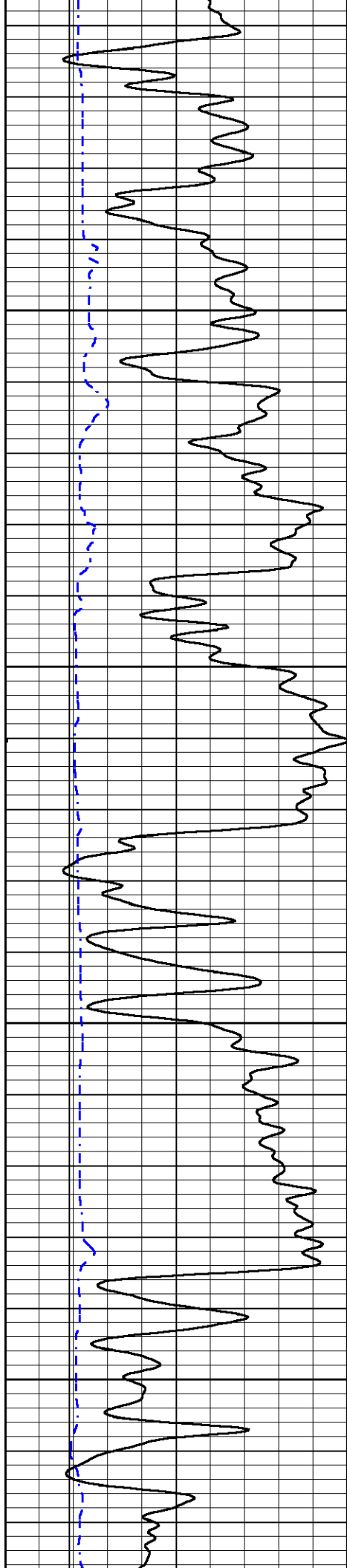


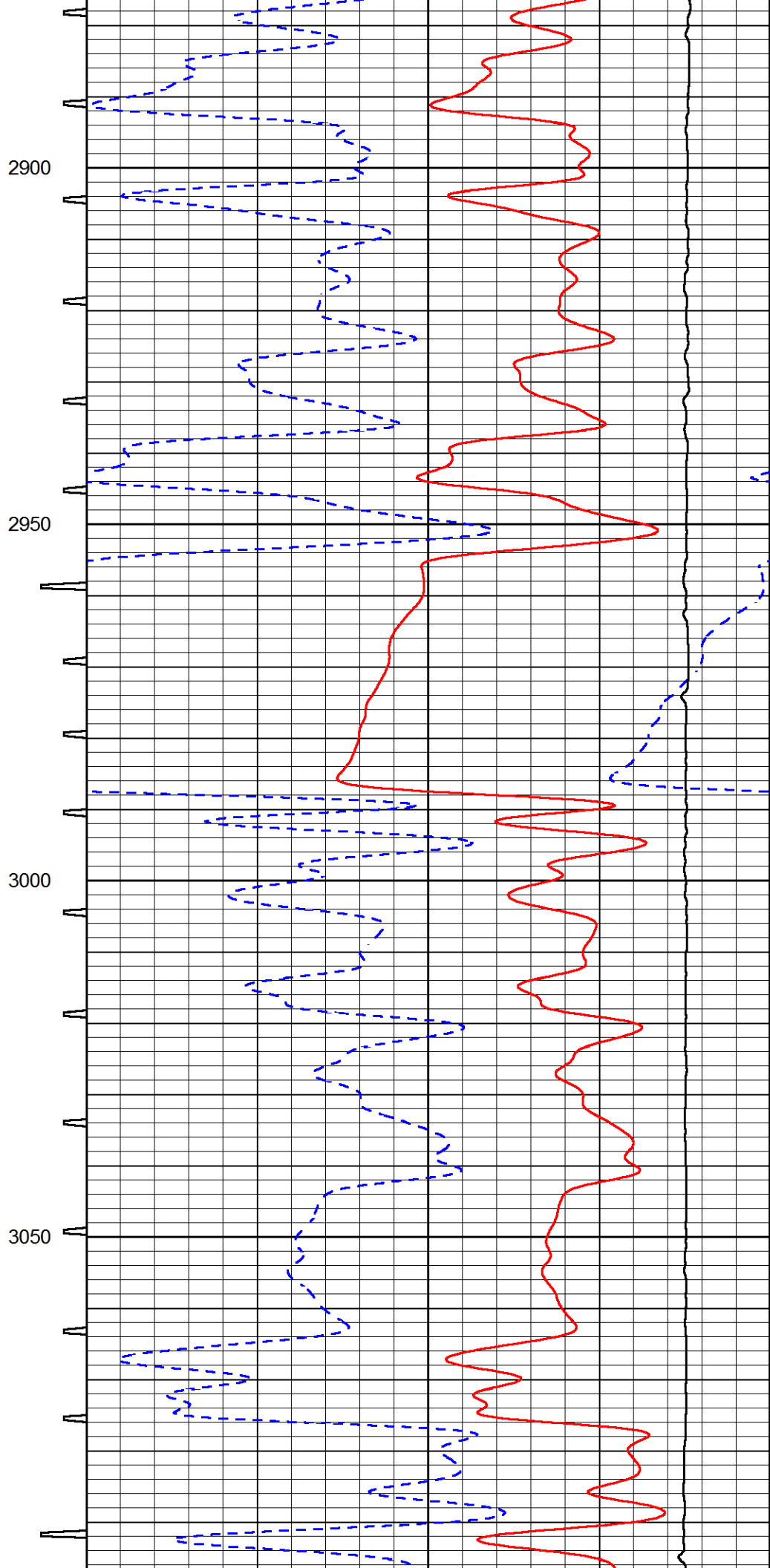
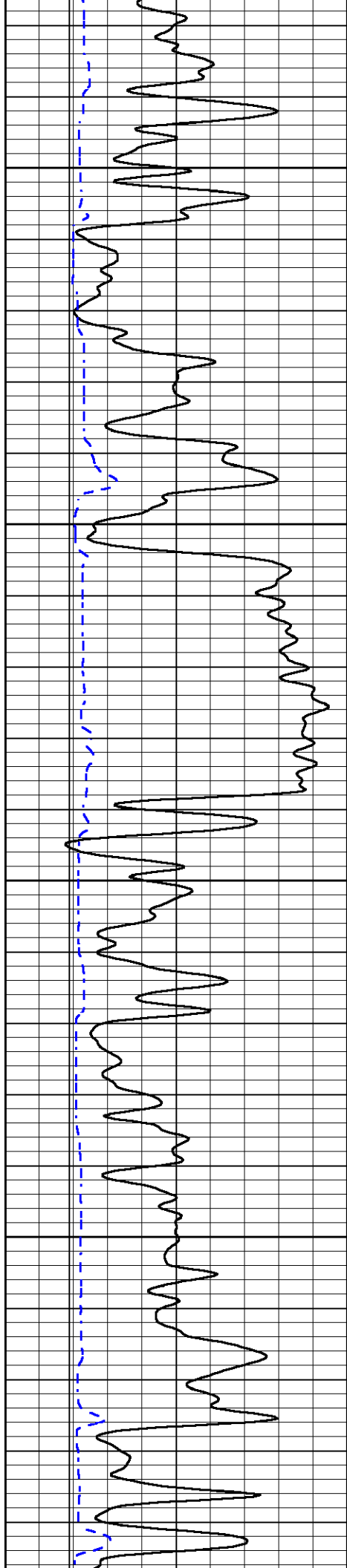


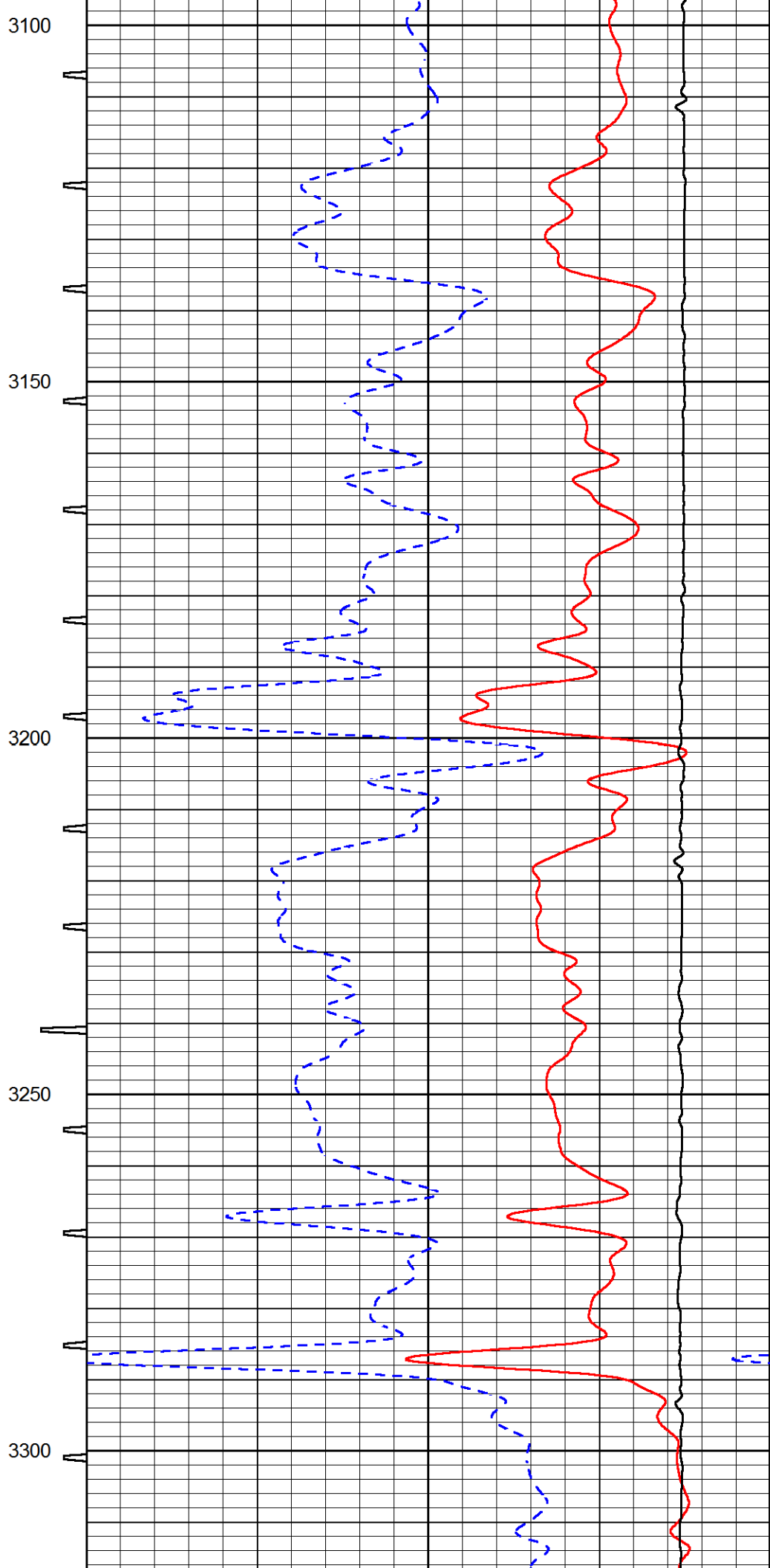
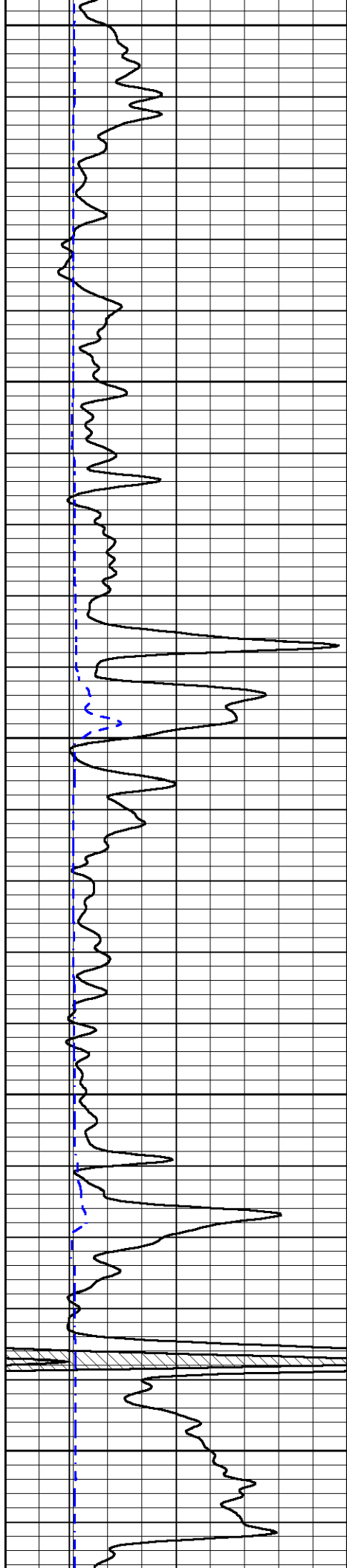


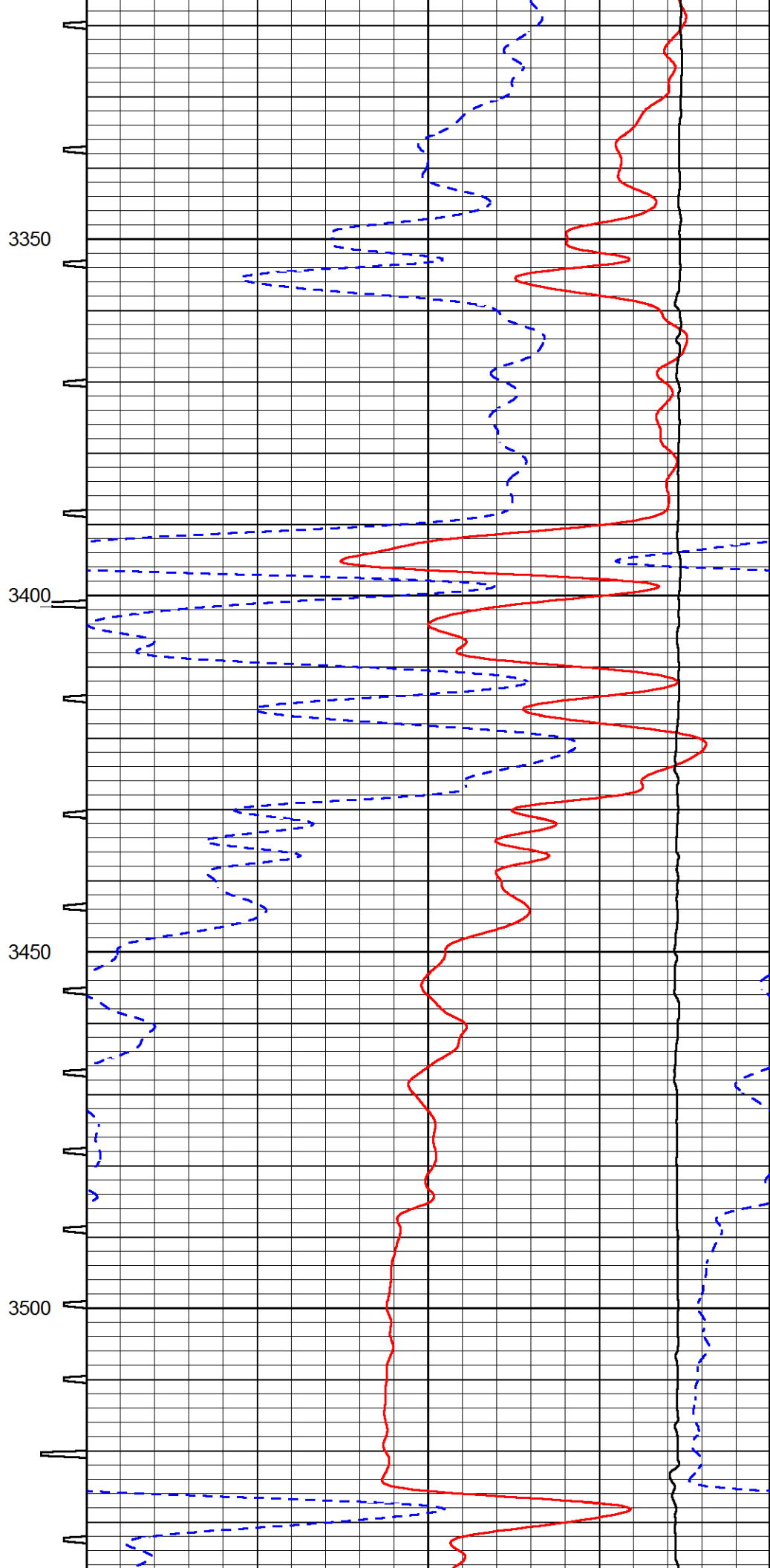
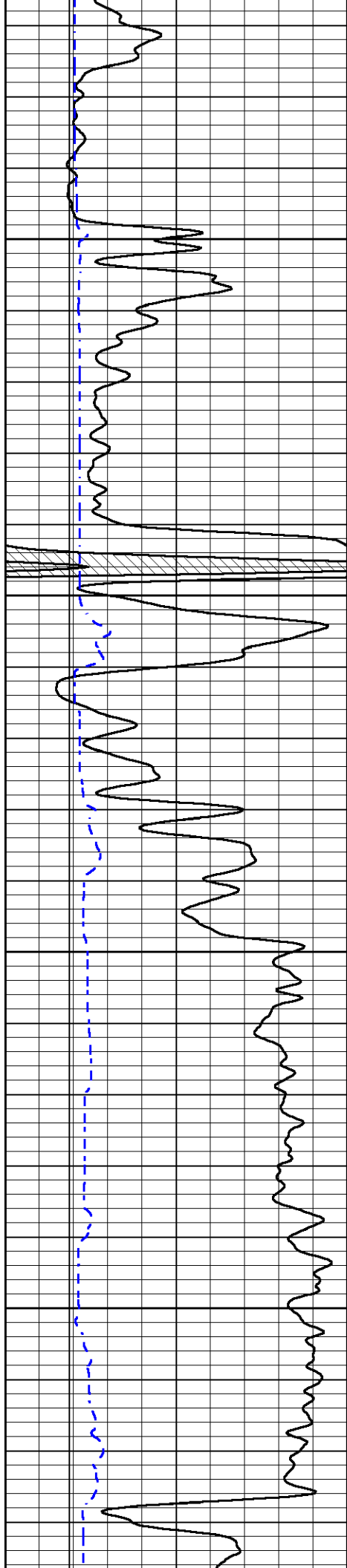


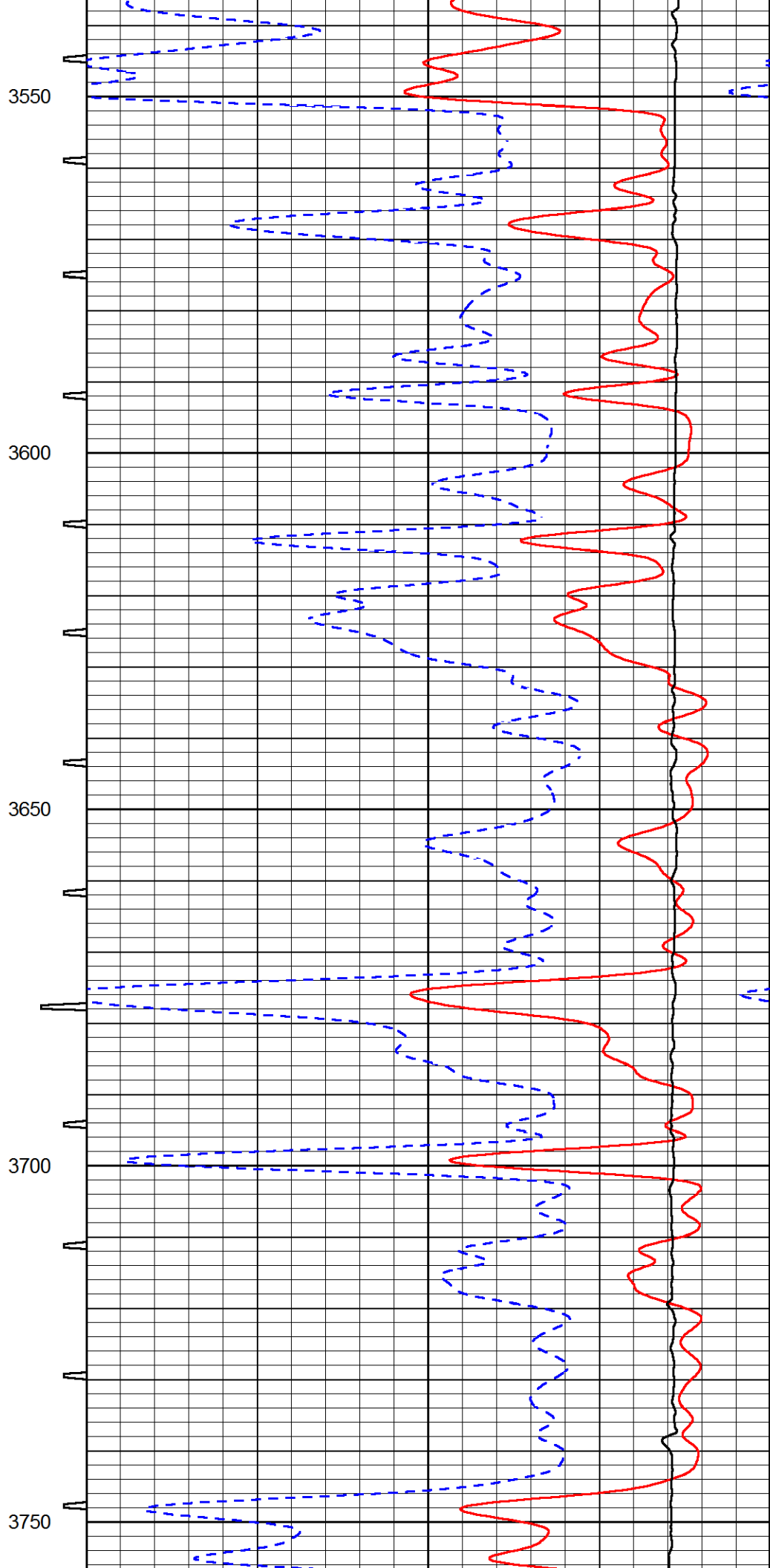
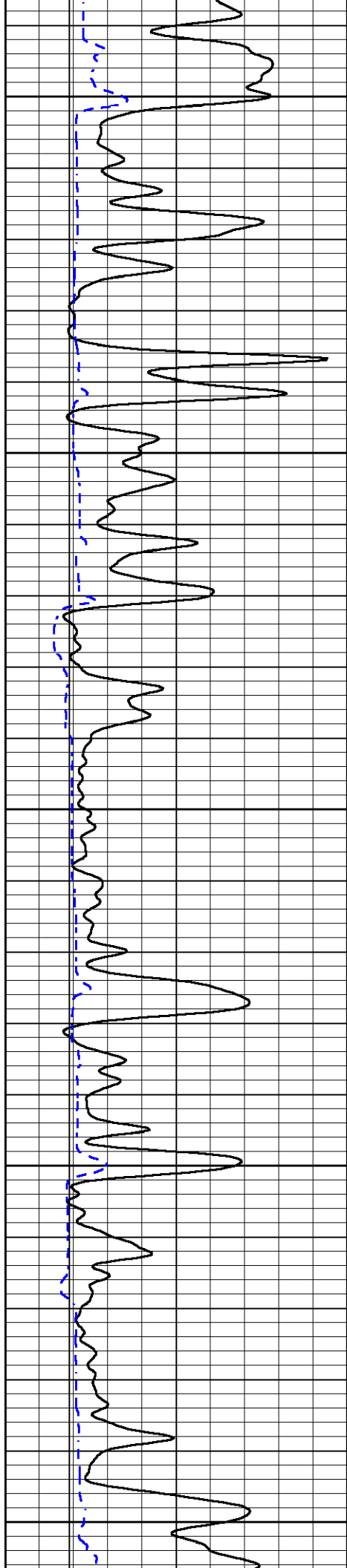


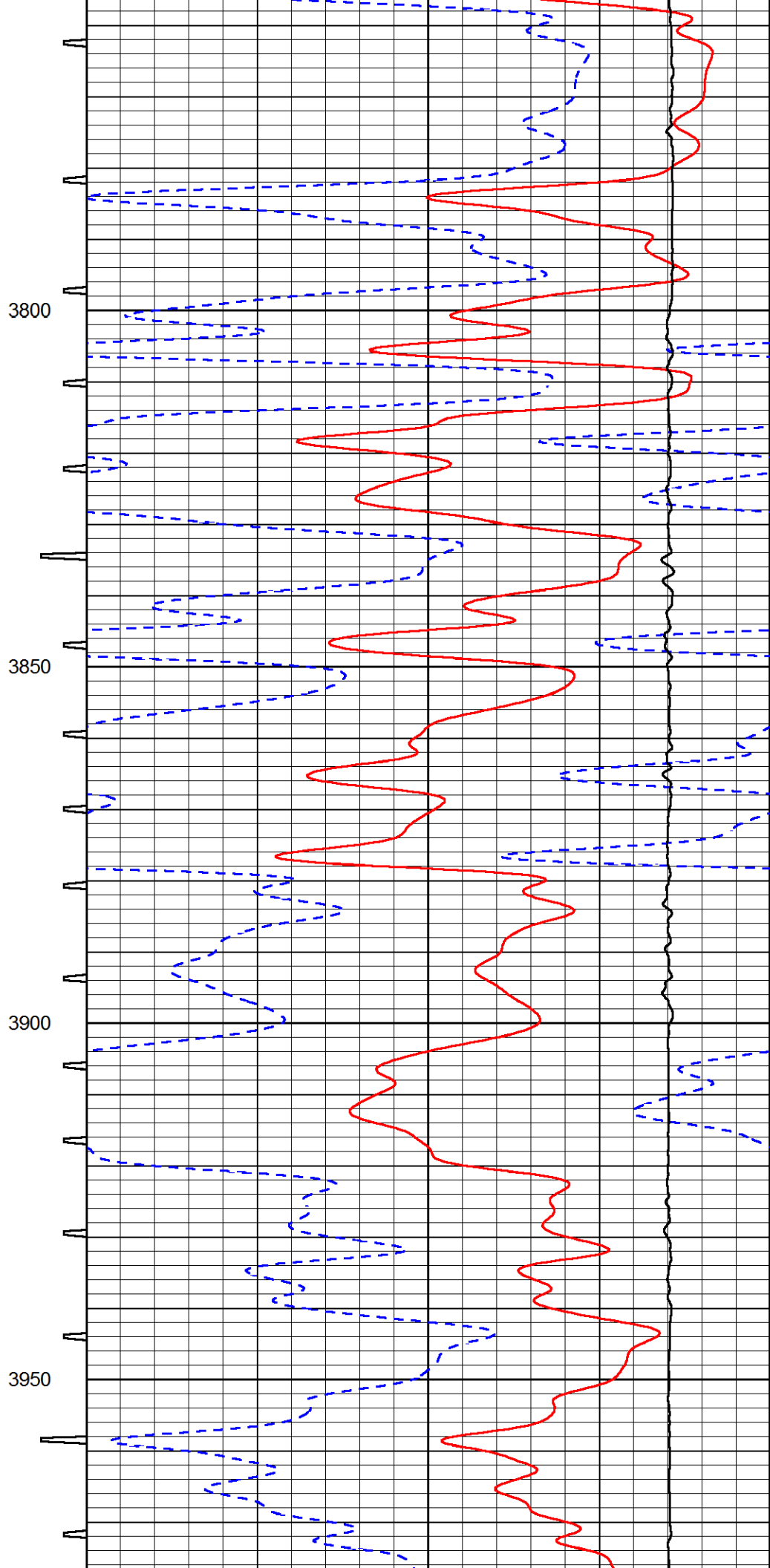
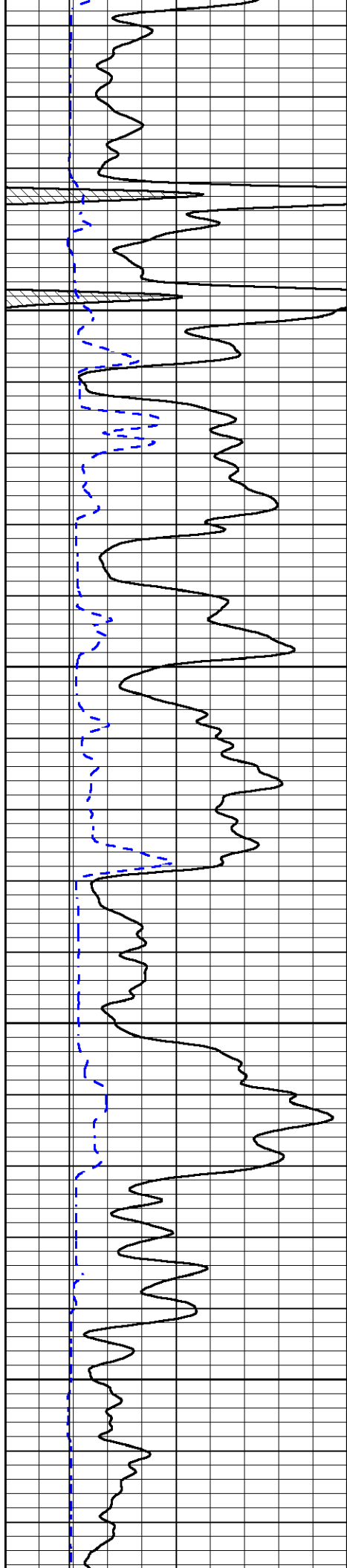


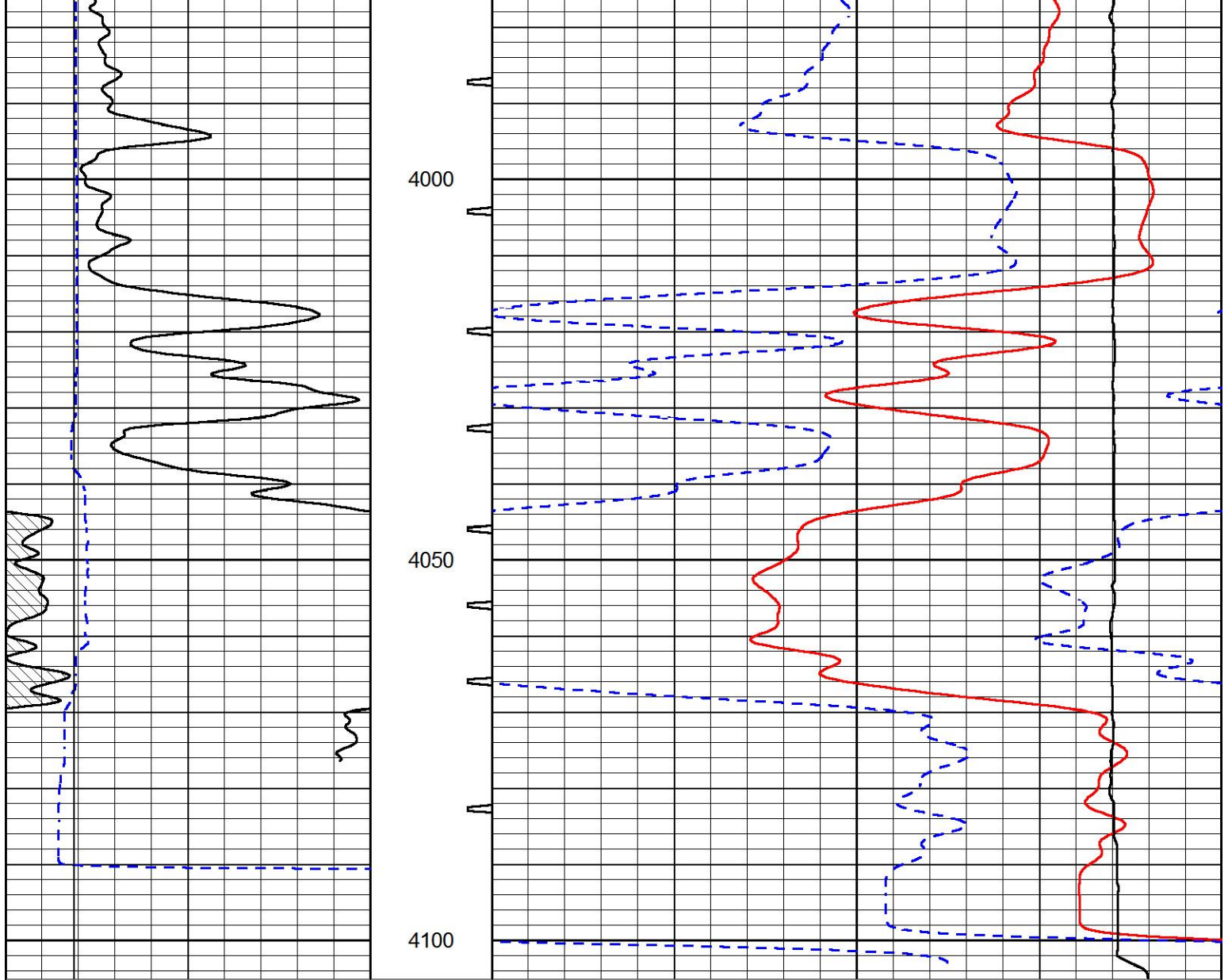












0	GAMMA RAY (GAPI)	150	SONIC INT	140	DELTA TIME (usec/ft) (usec/ft)	40
6	CALIPER (in)	16	TRAVEL TIME	30	SONIC POROSITY (pu)	-10
6	BIT SIZE	16	(msec)	15000	LINE TENSION (lb)	0

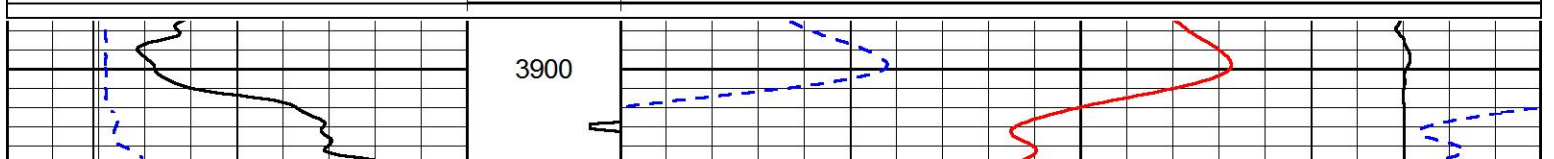


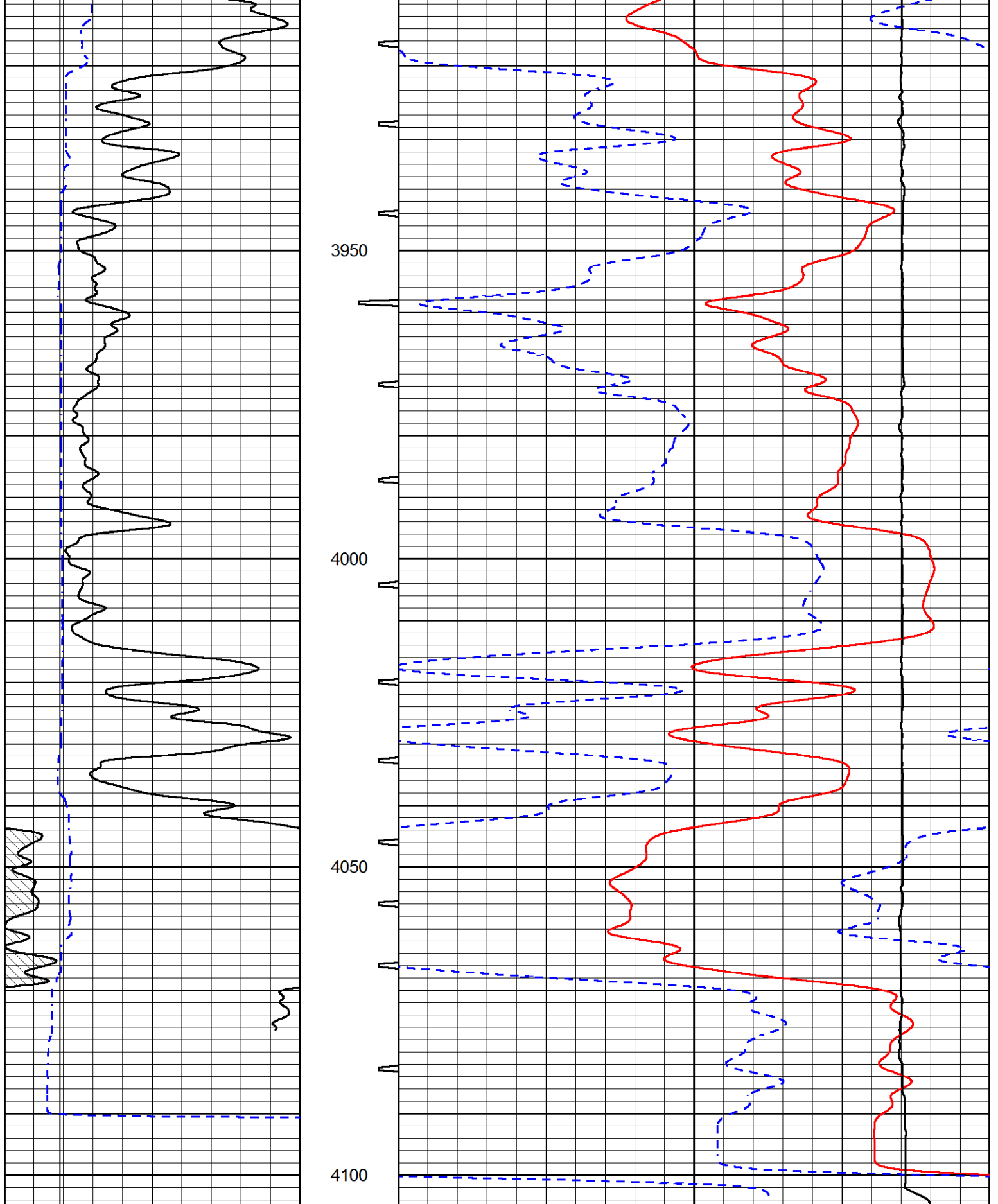
REPEAT SECTION

REPEAT PASS

Database File garner_dudrey_3_6.db
 Dataset Pathname stack/pass2.1
 Presentation Format sonic
 Dataset Creation Fri Jul 30 03:13:01 2021
 Charted by Depth in Feet scaled 1:240

0	GAMMA RAY (GAPI)	150	SONIC INT	140	DELTA TIME (usec/ft) (usec/ft)	40
6	CALIPER (in)	16	TRAVEL TIME	30	SONIC POROSITY (pu)	-10
6	BIT SIZE	16	(msec)	15000	LINE TENSION (lb)	0





0	GAMMA RAY (GAPI)	150	SONIC INT	140	DELTA TIME (usec/ft) (usec/ft)	40
6	CALIPER (in)	16	TRAVEL TIM	30	SONIC POROSITY (pu)	-10
6	BIT SIZE	16	(msec)	15000	LINE TENSION (lb)	0