

SONIC
LOG



Company BLUERIDGE PETROLEUM CORPORATION
 Well BACON #1-16
 Field WILDCAT
 County MORRIS State KANSAS

Location: API #: 15-127-20603-0000
 423' FNL & 1194' FWL
 SE NE NW NW
 Permanent Datum GROUND LEVEL Elevation 1396
 Log Measured From KELLY BUSHING 12' A.G.L.
 Drilling Measured From KELLY BUSHING
 SEC 16 TWP 15S RGE 8E
 Other Services
 CDL/CNL/PE
 DIL/MEEL
 Elevation
 K.B. 1408
 D.F. 1406
 G.L. 1396

Date	10/1/21		
Run Number	TWO		
Depth Driller	3330		
Depth Logger	3331		
Bottom Logged Interval	3321		
Top Log Interval	200		
Casing Driller	8 5/8" @ 244		
Casing Logger	244		
Bit Size	7 7/8		
Type Fluid in Hole	CHEMICAL MUD	CHLORIDES 400 PPM	
Density / Viscosity	9.0/48		
pH / Fluid Loss	10.5/9.9		
Source of Sample	FLOWLINE		
Rm @ Meas. Temp	1.20 @ 72F		
Rmf @ Meas. Temp	0.90 @ 72F		
Rmc @ Meas. Temp	1.44 @ 72F		
Source of Rmf / Rmc	MEASUREMENT		
Rm @ BHT	0.78 @ 110F		
Time Circulation Stopped	2 HOURS		
Time Logger on Bottom	////		
Maximum Recorded Temperature	110F		
Equipment Number	3802		
Location	HAYS, KANSAS		
Recorded By	JASON CAPPELLUCCI		
Witnessed By	JIM MUSGROVE		

<<< Fold Here >>>

All interpretations are opinions based on inferences from electrical or other measurements and we cannot and do not guarantee the accuracy or correctness of any interpretation, and we shall not, except in the case of gross or willful negligence on our part, be liable or responsible for any loss, costs, damages, or expenses incurred or sustained by anyone resulting from any interpretation made by any of our officers, agents or employees. These interpretations are also subject to our general terms and conditions set out in our current Price Schedule.

Comments

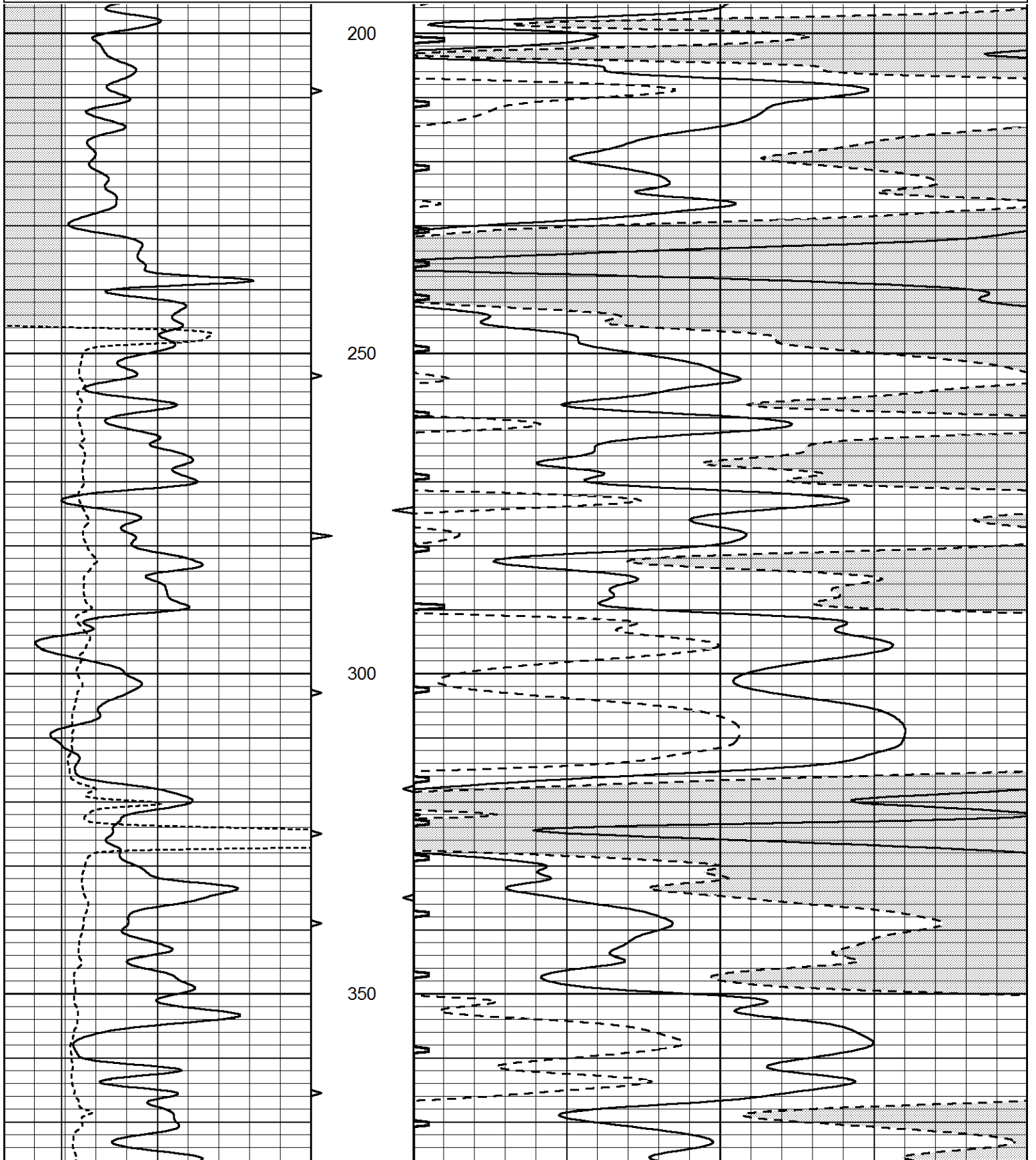
THANK YOU FOR USING ELI WIRELINE SERVICES, HAYS, KS. (785) 628-6395
 DIRECTIONS
 COUNCIL GROVE, KS. - 6 NORTH ON HWY 177 TO RD. K - 1 3/4 WEST - SOUTH INTO

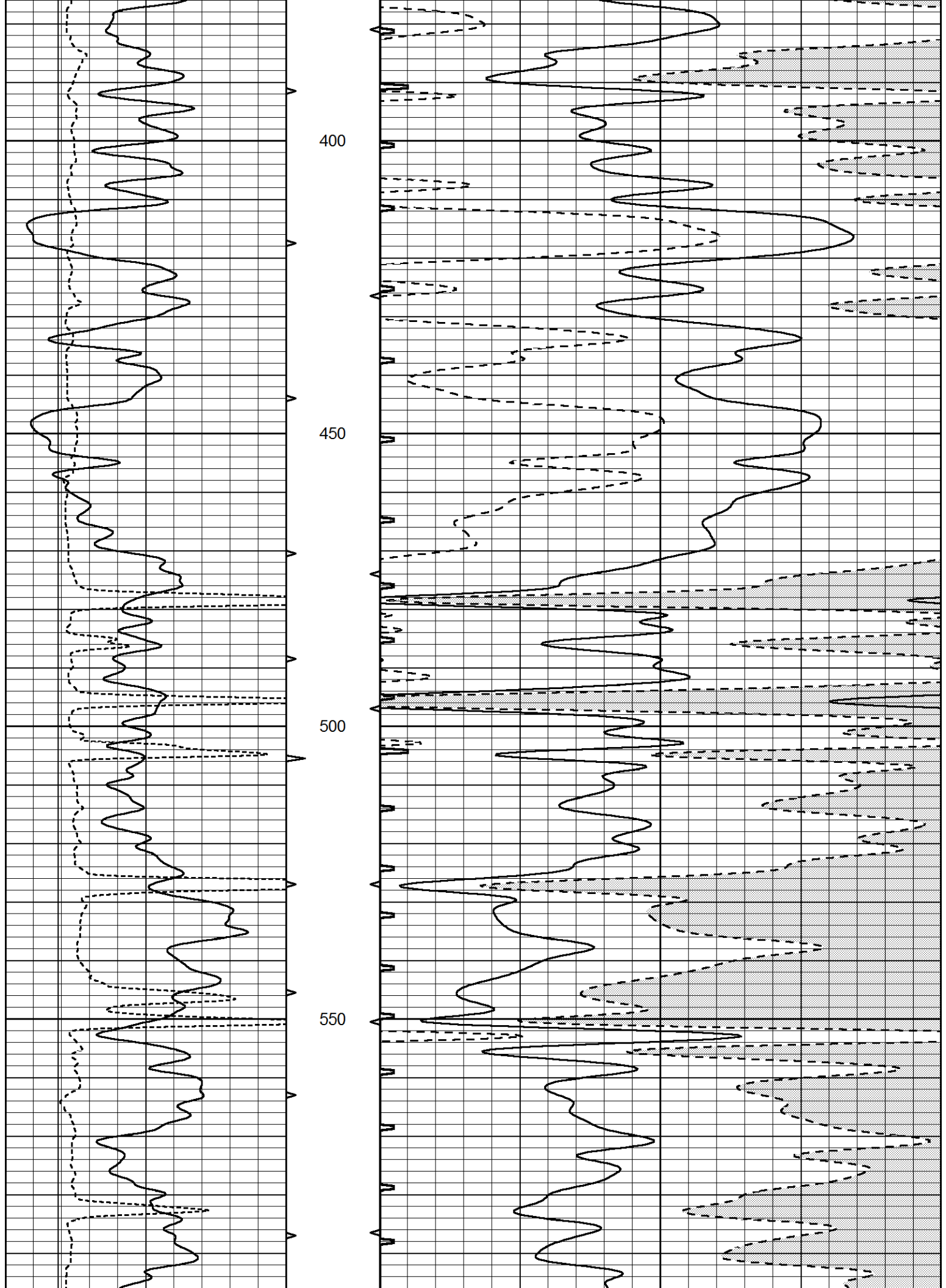


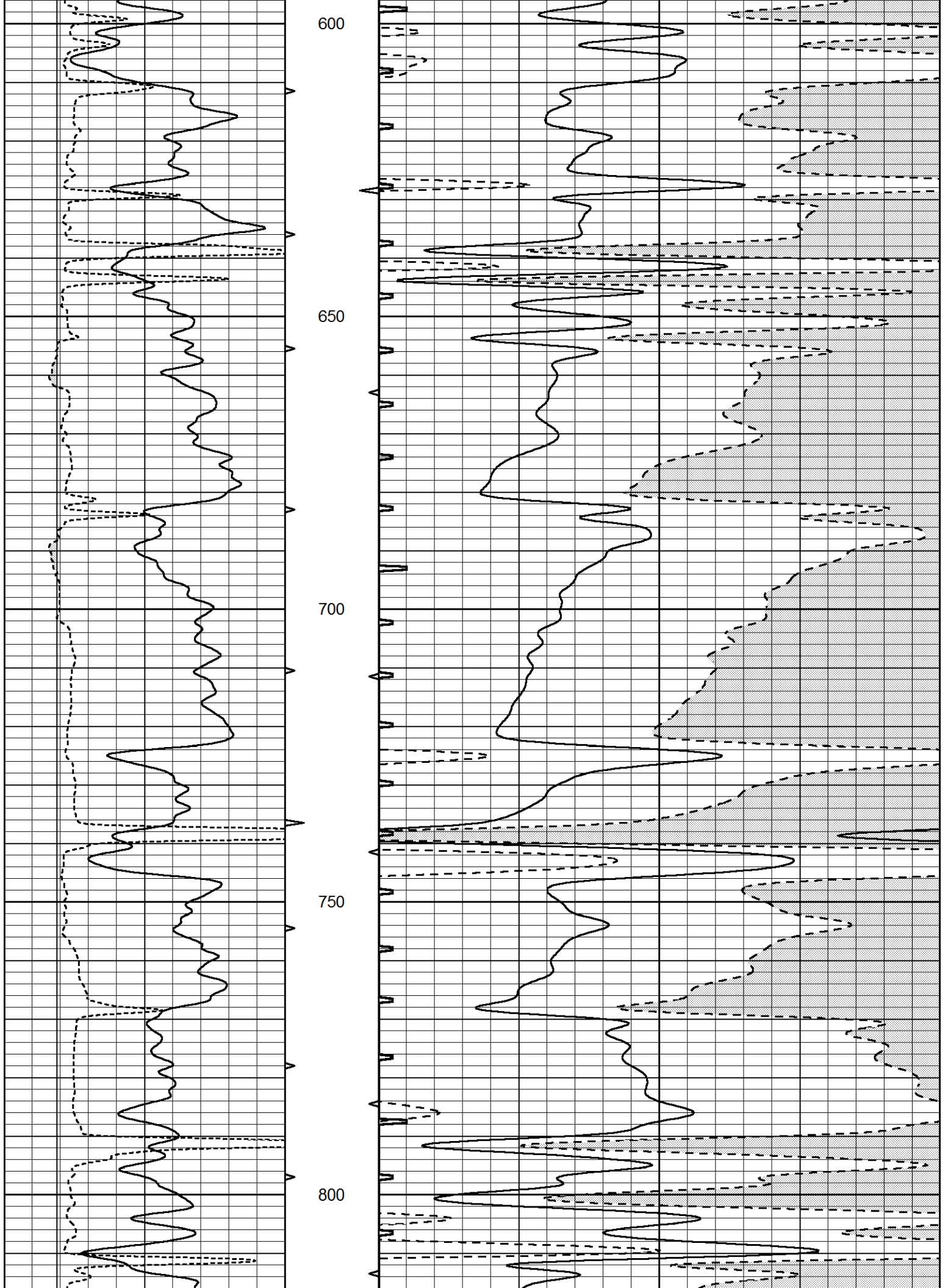
MAIN SECTION

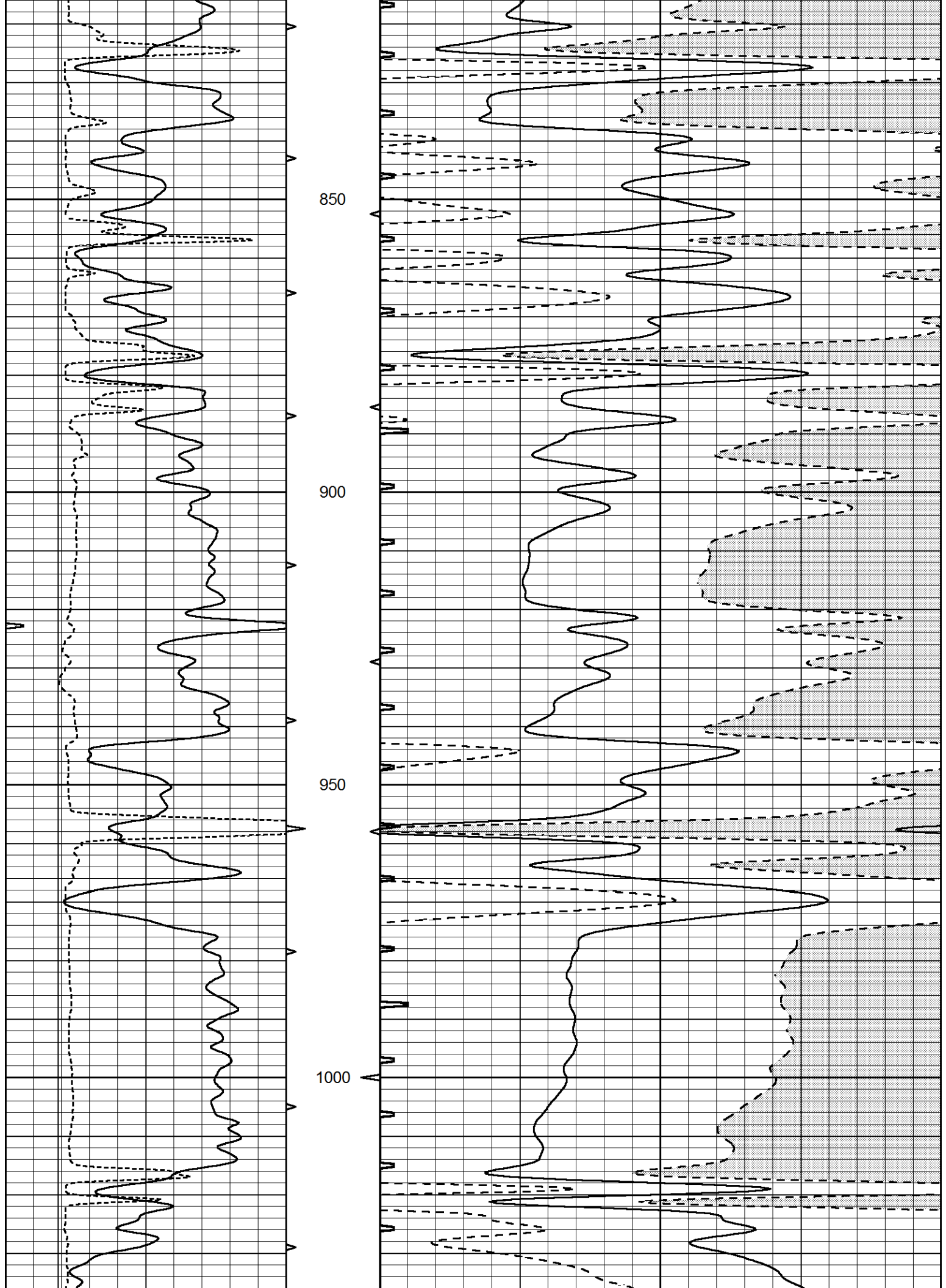
Database File 5858ddn.db
 Dataset Pathname pass6.2
 Presentation Format _slt
 Dataset Creation Fri Oct 01 04:49:08 2021
 Charted by Depth in Feet scaled 1:240

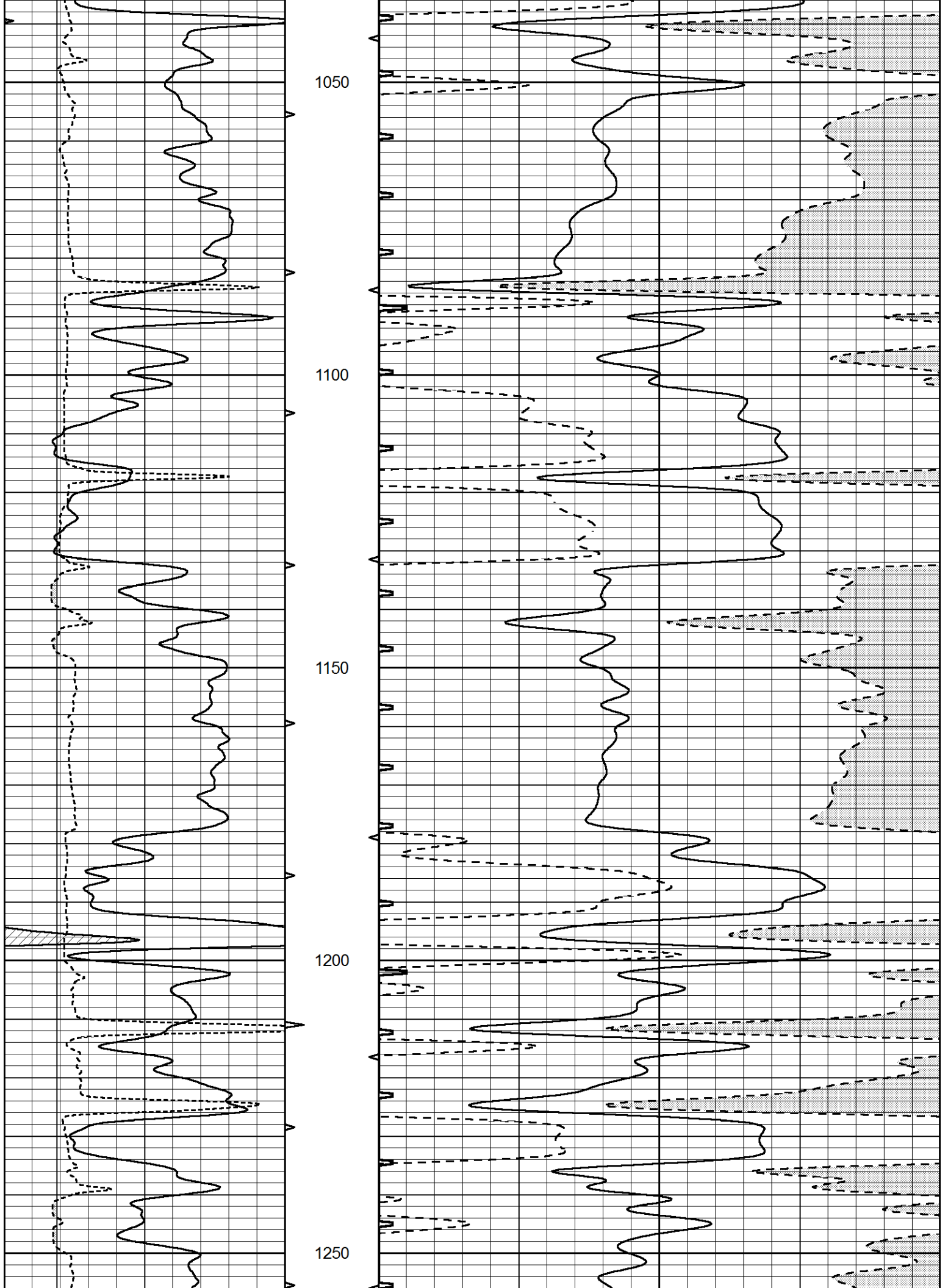
0	GAMMA RAY (GAPI)	150	ABHV	140	DELTA TIME (usec/ft)	40	
6	CALIPER (in)	16	10 (ft3)	0	30	SONIC POROSITY (pu)	-10
			TBHV	0	ITT (msec)	20	
			0 (ft3)	10			

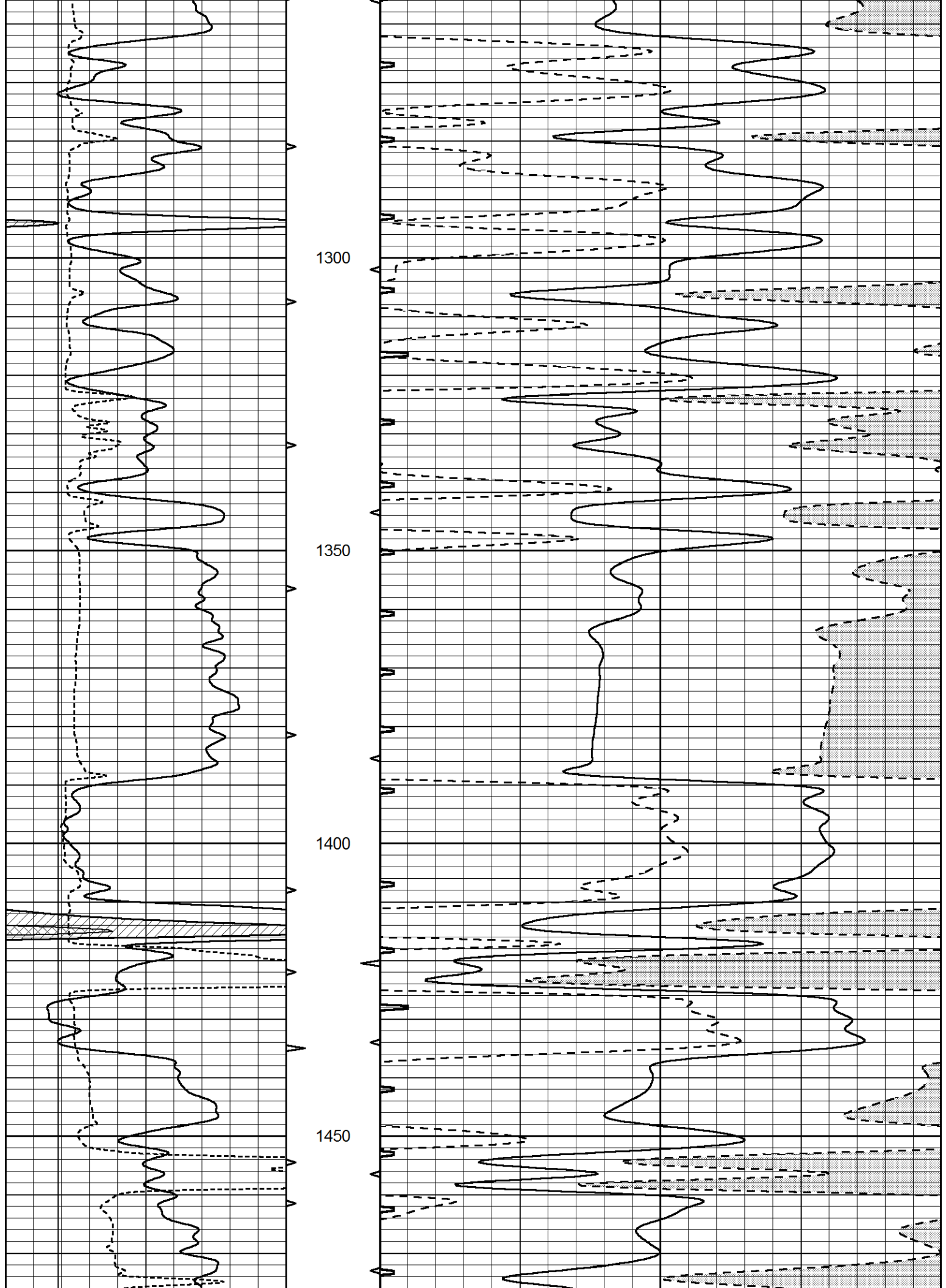


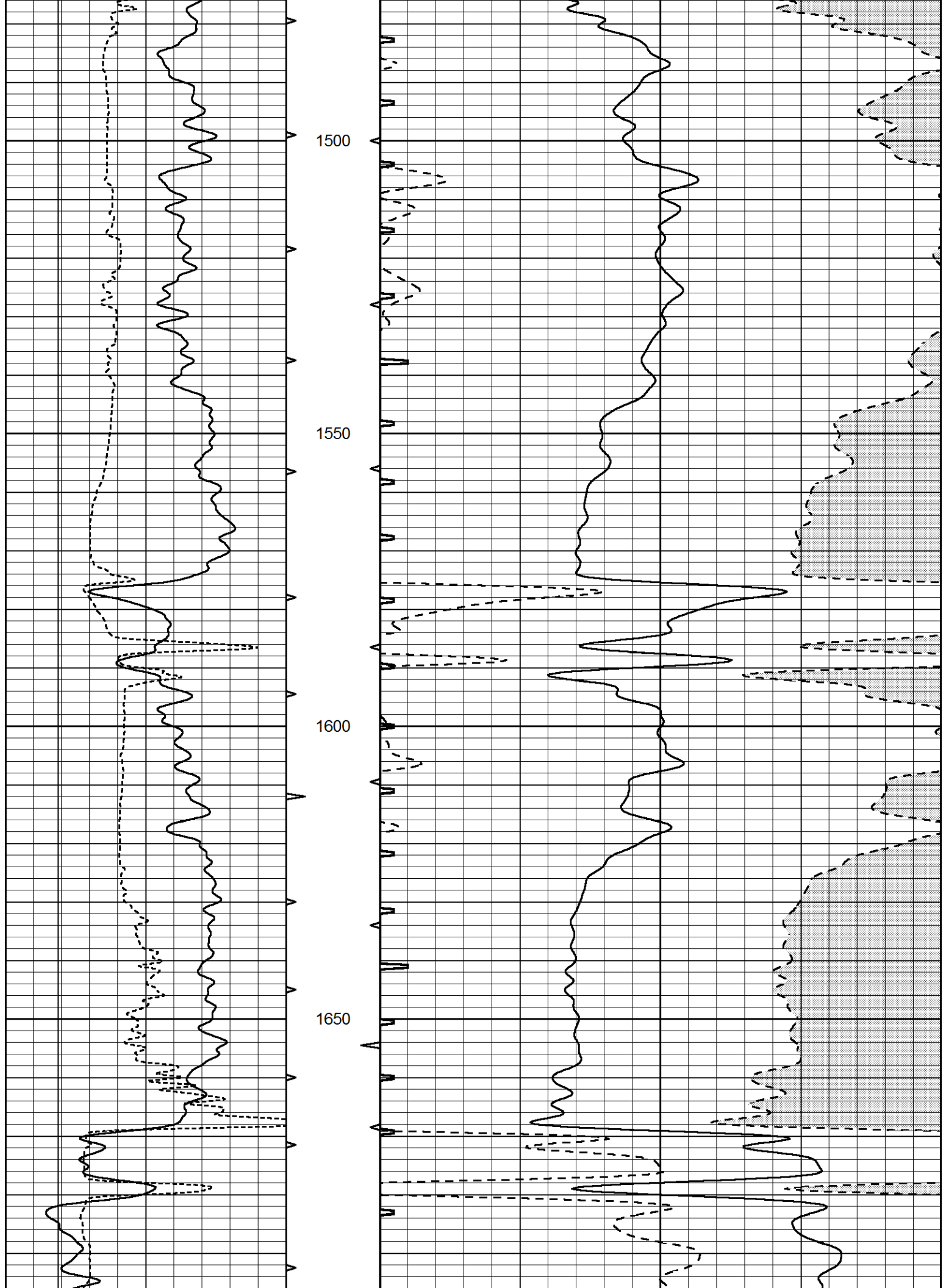


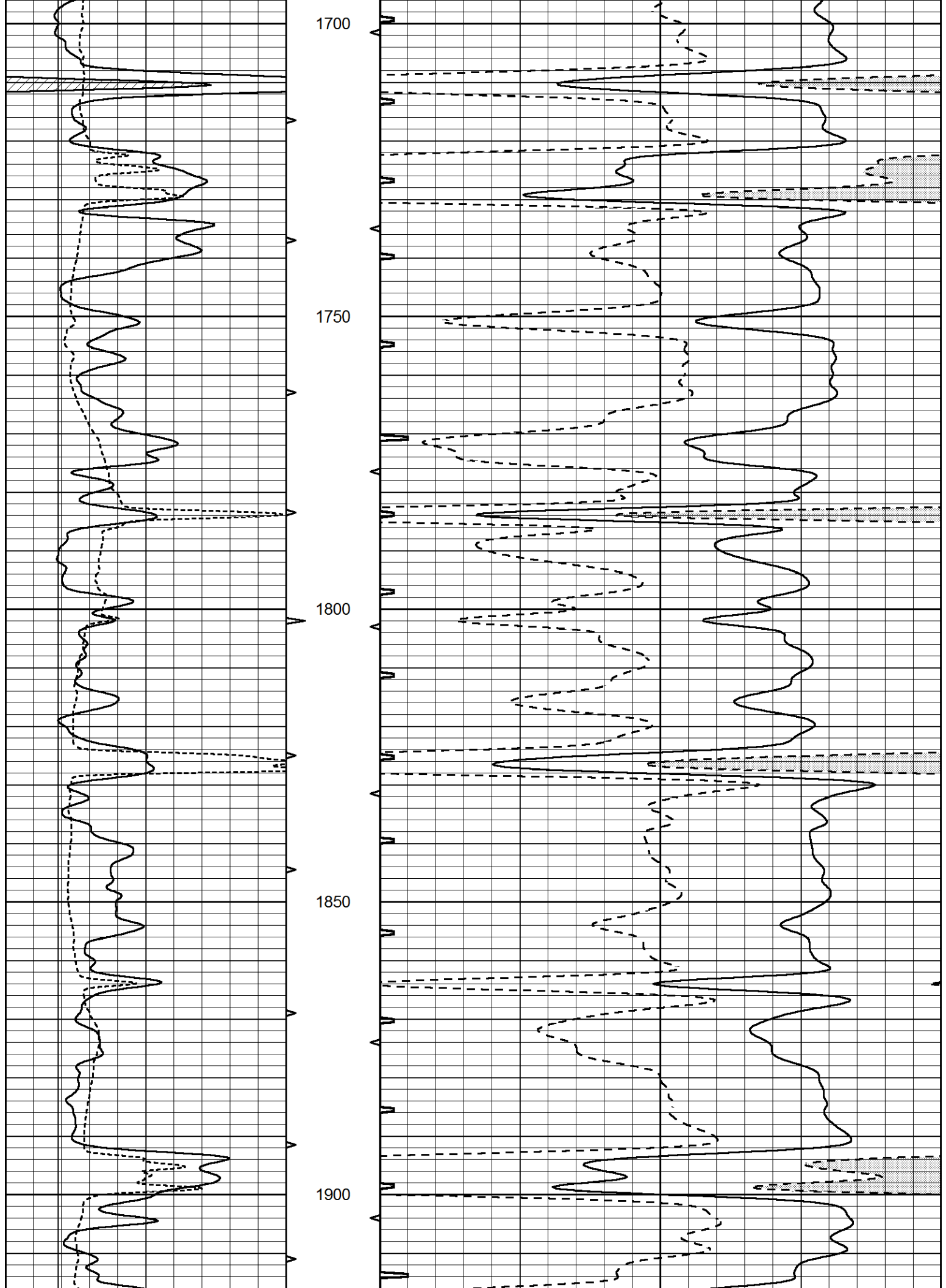


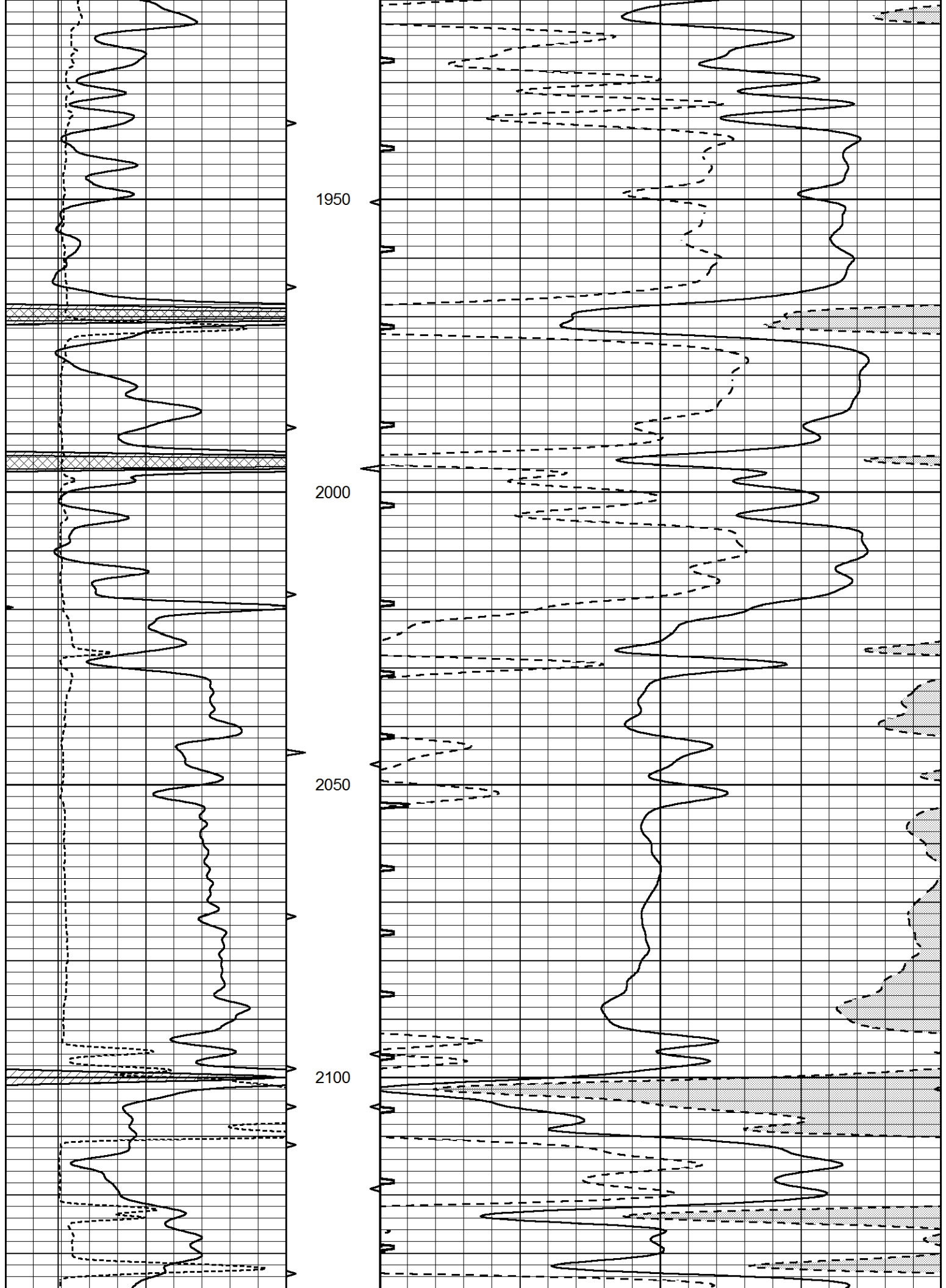


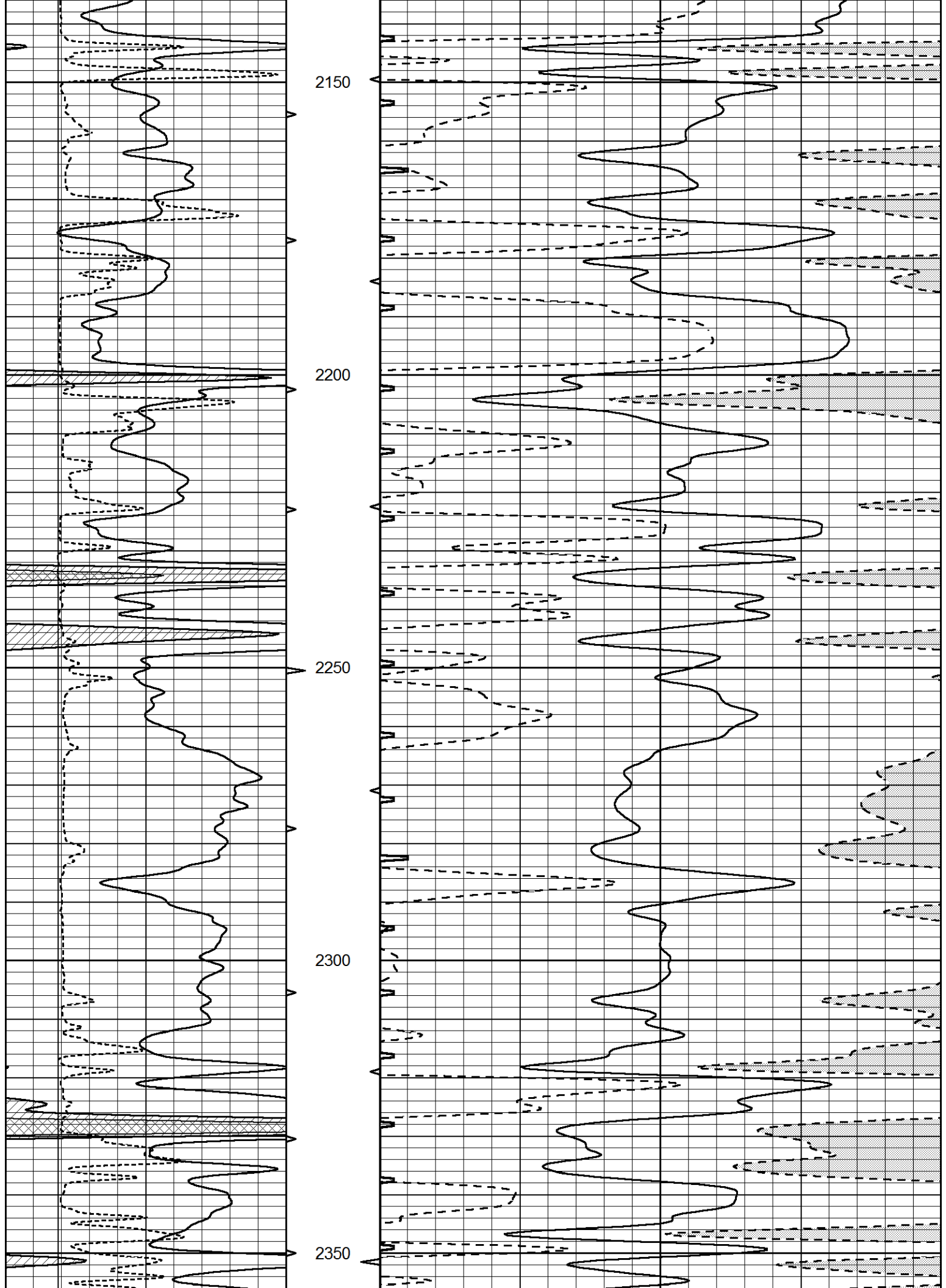


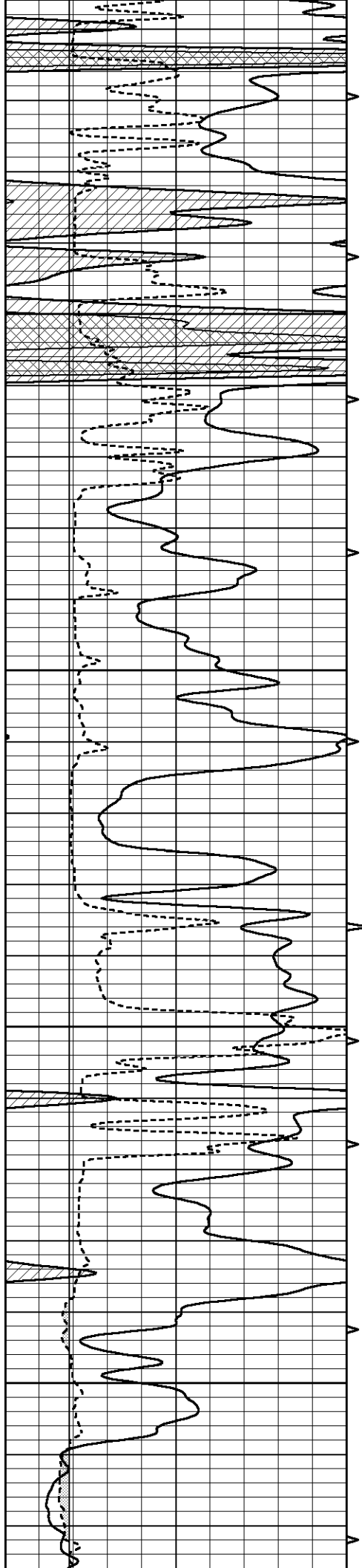










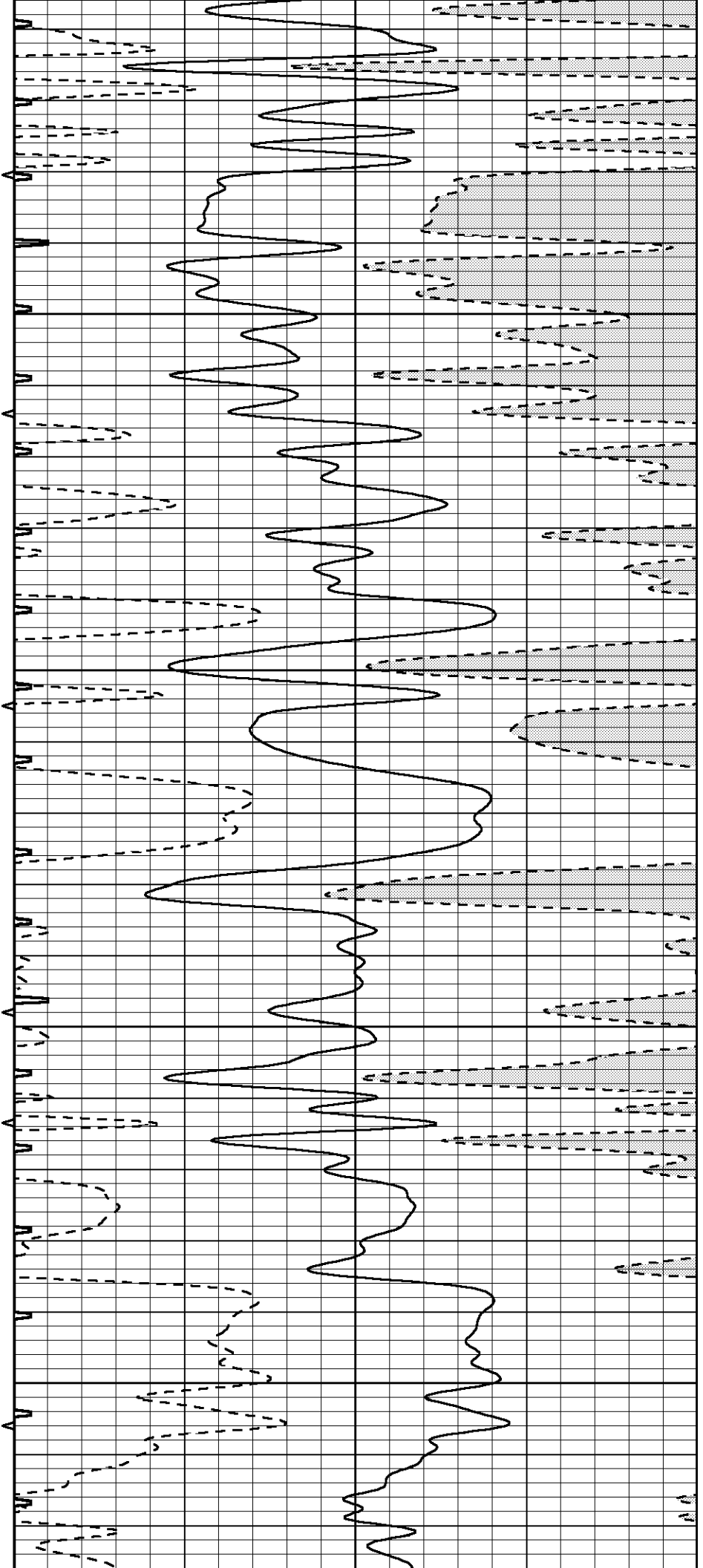


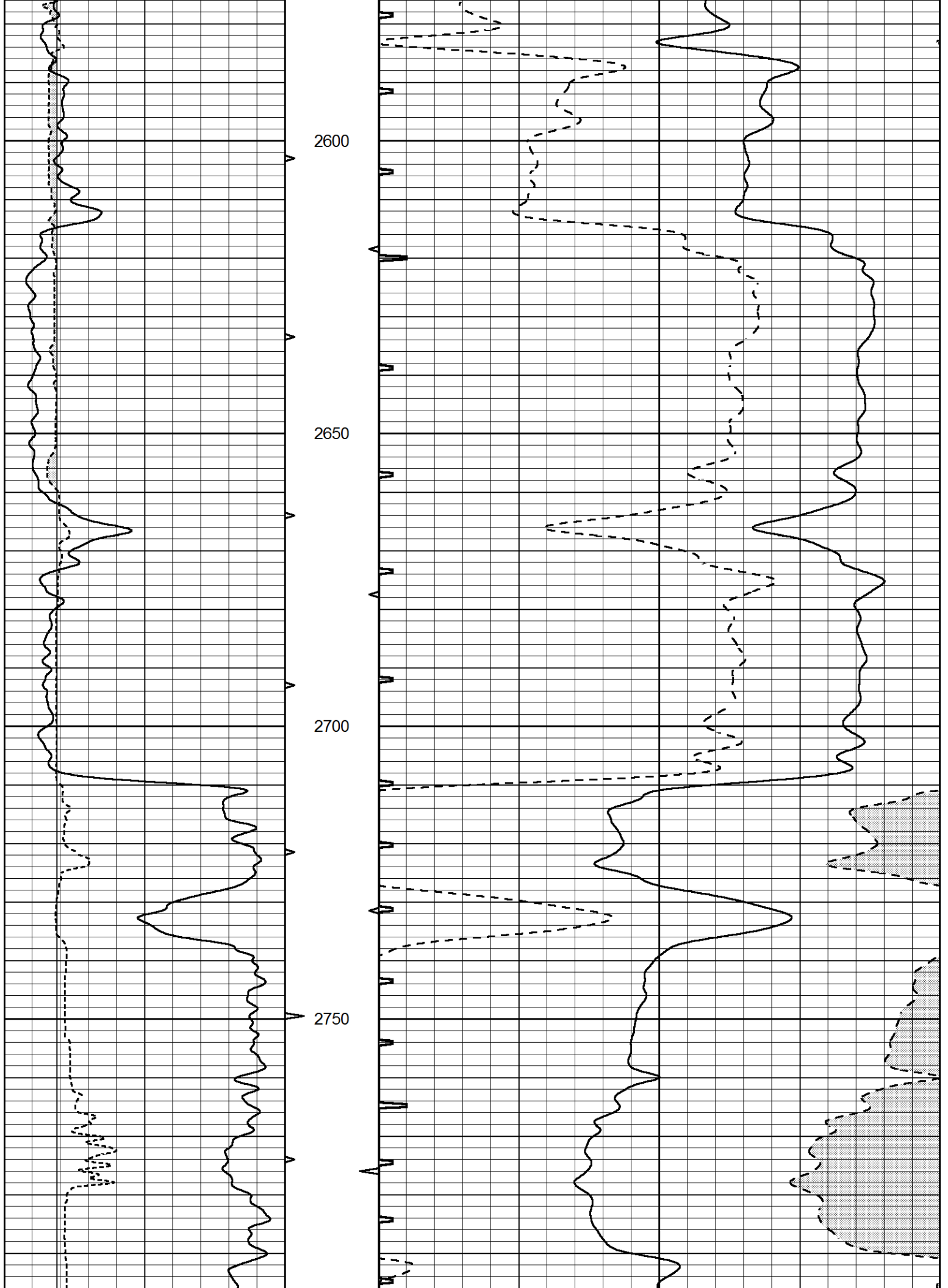
2400

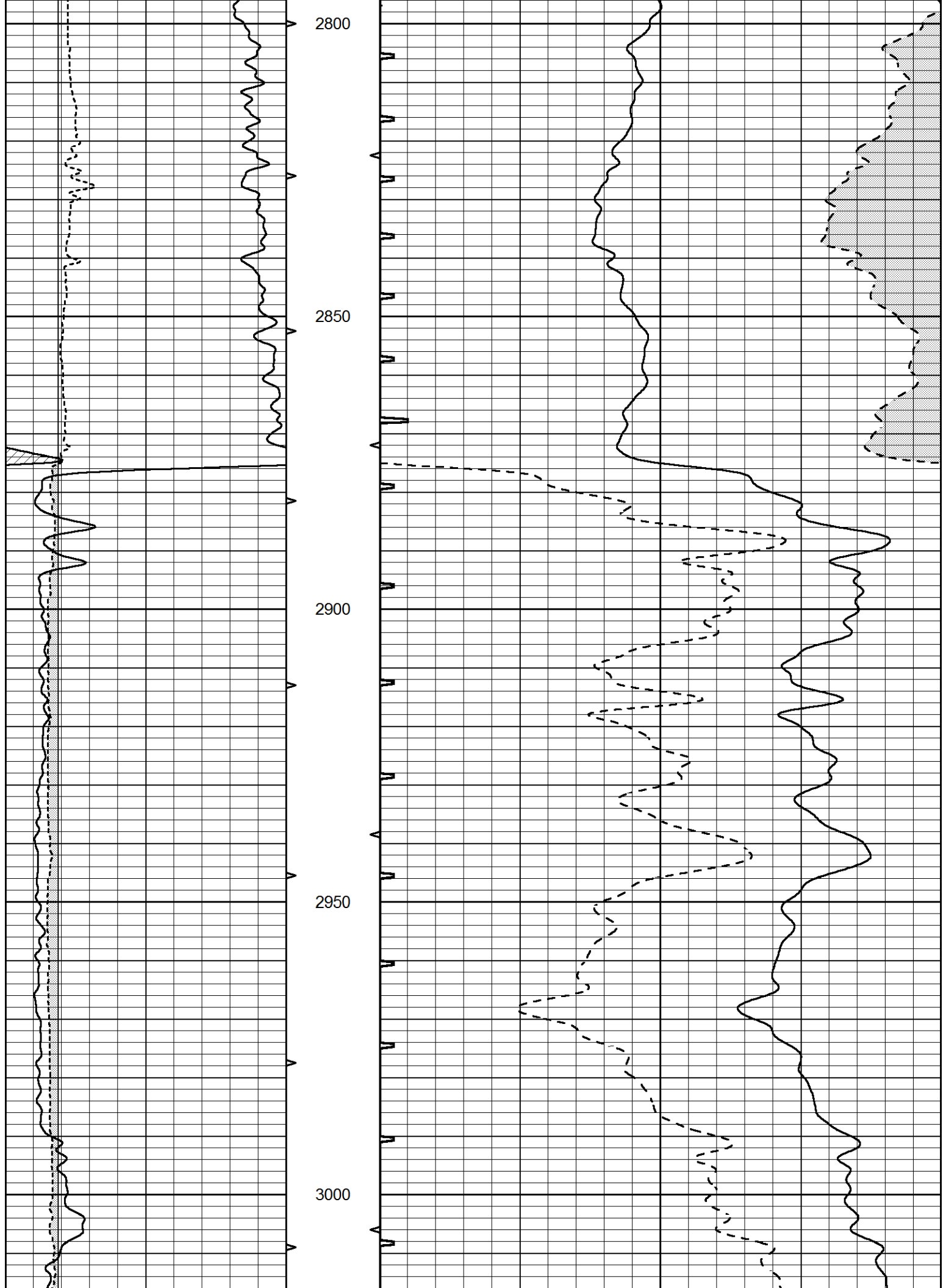
2450

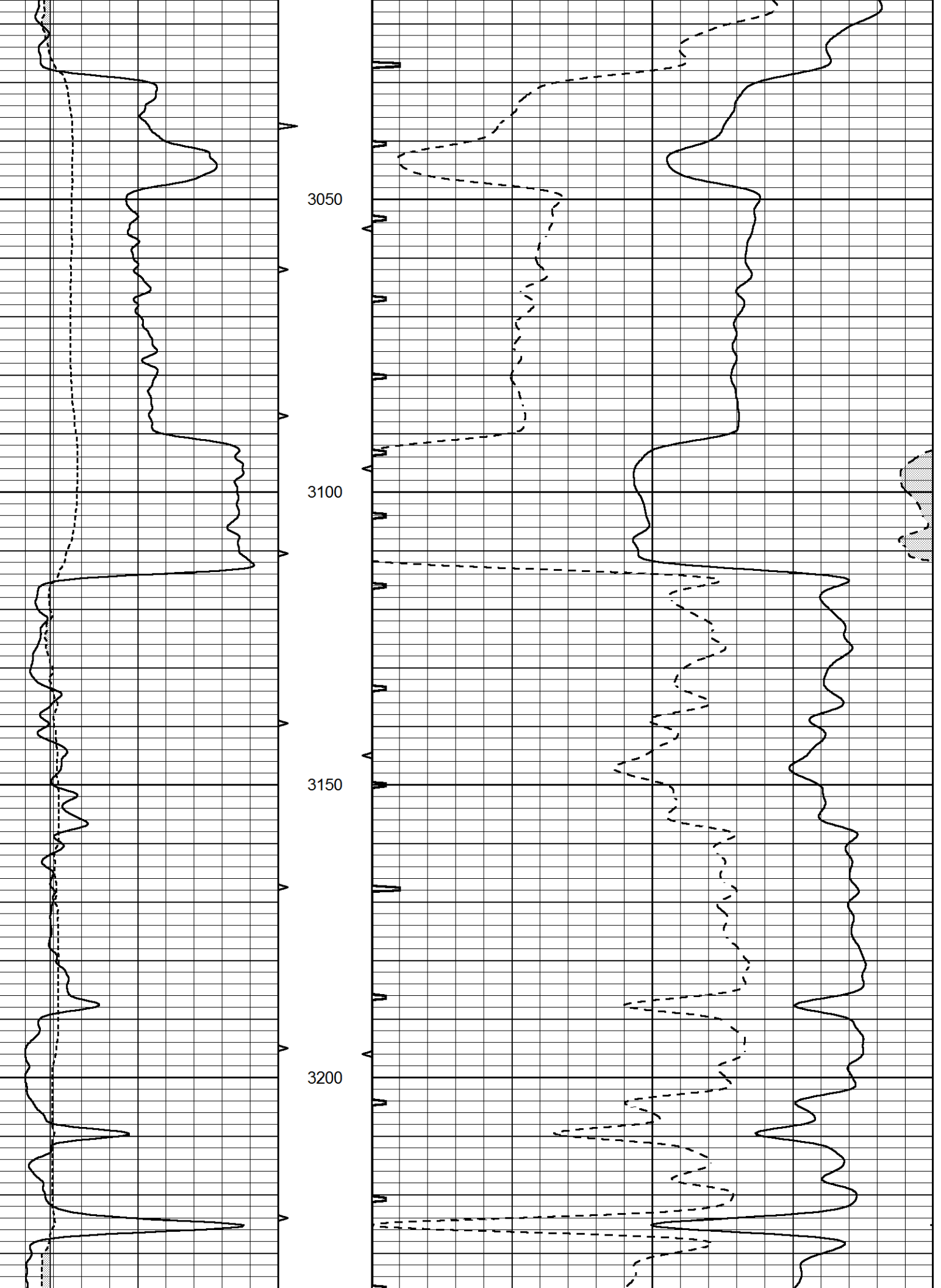
2500

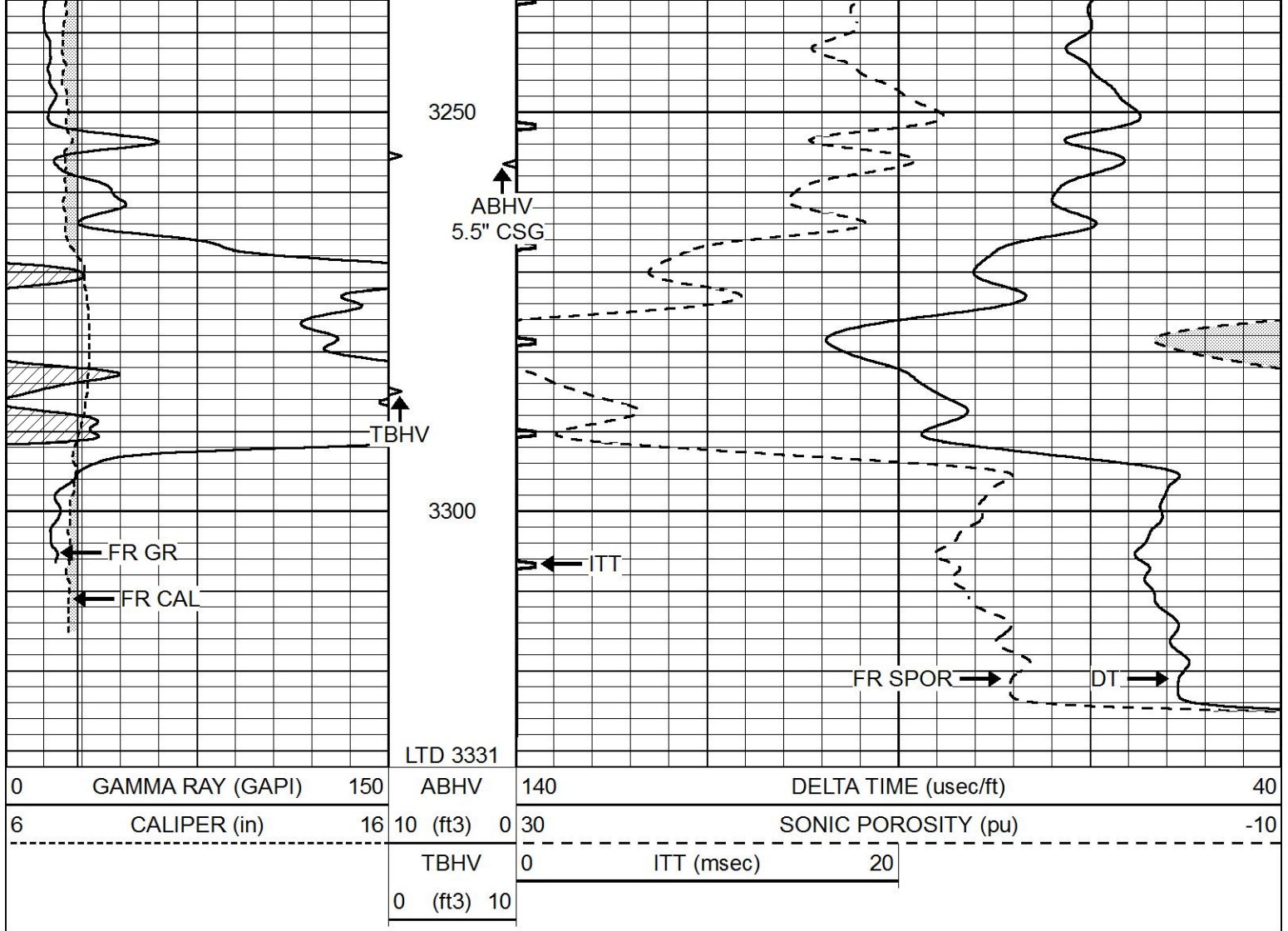
2550







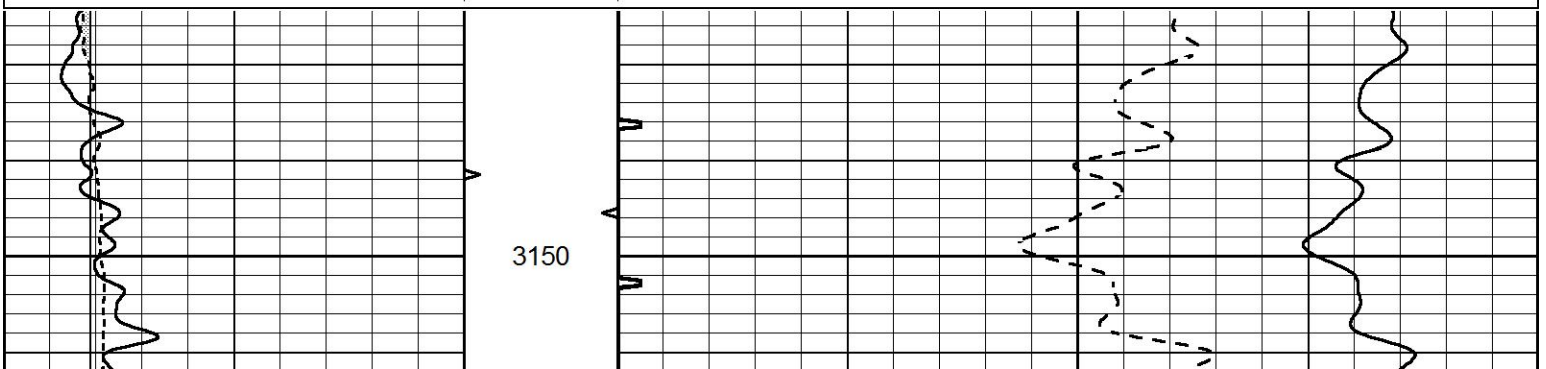


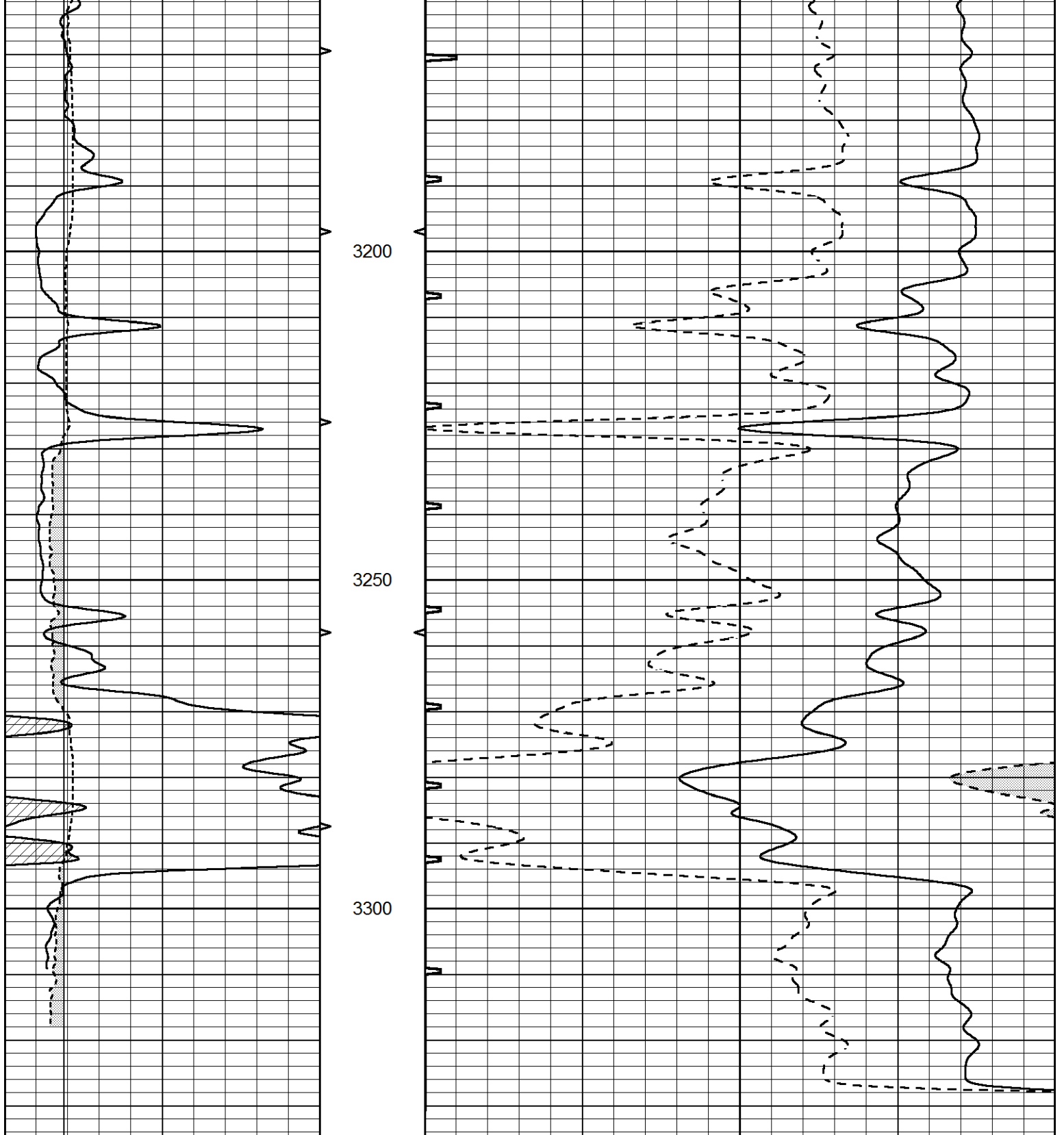


REPEAT SECTION

Database File 5858ddn.db
 Dataset Pathname pass5.1
 Presentation Format _slt
 Dataset Creation Fri Oct 01 04:17:03 2021
 Charted by Depth in Feet scaled 1:240

0	GAMMA RAY (GAPI)	150	ABHV	140	DELTA TIME (usec/ft)	40
6	CALIPER (in)	16	10 (ft3) 0	30	SONIC POROSITY (pu)	-10
			TBHV	0	ITT (msec)	20
			0 (ft3) 10			





0	GAMMA RAY (GAPI)	150	ABHV	140	DELTA TIME (usec/ft)	40
6	CALIPER (in)	16	10 (ft3) 0	30	SONIC POROSITY (pu)	-10
			TBHV	0	ITT (msec)	20
			0 (ft3) 10			