



**COMPENSATED
DENSITY/NEUTRON
PE LOG**

Company BLUERIDGE PETROLEUM CORPORATION
Well BACON #1-16
Field WILDCAT
County MORRIS
State KANSAS

Company BLUERIDGE PETROLEUM CORPORATION
Well BACON #1-16
Field WILDCAT
County MORRIS State KANSAS

Location: API #: 15-127-20603-0000
423' FNL & 1194' FWL
SE NENWNW
SEC 16 TWP 15S RGE 8E
Permanent Datum GROUND LEVEL Elevation 1396
Log Measured From KELLY BUSHING 12' A.G.L.
Drilling Measured From KELLY BUSHING
Other Services
DILMEL
SONIC
Elevation
K.B. 1408
D.F. 1406
G.L. 1396

Date	10/1/21		
Run Number	ONE		
Depth Driller	3330		
Depth Logger	3331		
Bottom Logged Interval	3307		
Top Log Interval	1300		
Casing Driller	8 5/8" @ 244		
Casing Logger	244		
Bit Size	7 7/8		
Type Fluid in Hole	CHEMICAL MUD	CHLORIDES 400 PPM	
Density / Viscosity	9.0/48		
pH / Fluid Loss	10.5/9.9		
Source of Sample	FLOWLINE		
Rm @ Meas. Temp	1.20 @ 72F		
Rmf @ Meas. Temp	0.90 @ 72F		
Rmc @ Meas. Temp	1.44 @ 72F		
Source of Rmf / Rmc	MEASUREMENT		
Rm @ BHT	0.78 @ 110F		
Time Circulation Stopped	2 HOURS		
Time Logger on Bottom	////		
Maximum Recorded Temperature	110F		
Equipment Number	3802		
Location	HAYS, KANSAS		
Recorded By	JASON CAPPELLUCCI		
Witnessed By	JIM MUSGROVE		

<<< Fold Here >>>

All interpretations are opinions based on inferences from electrical or other measurements and we cannot and do not guarantee the accuracy or correctness of any interpretation, and we shall not, except in the case of gross or willful negligence on our part, be liable or responsible for any loss, costs, damages, or expenses incurred or sustained by anyone resulting from any interpretation made by any of our officers, agents or employees. These interpretations are also subject to our general terms and conditions set out in our current Price Schedule.

Comments

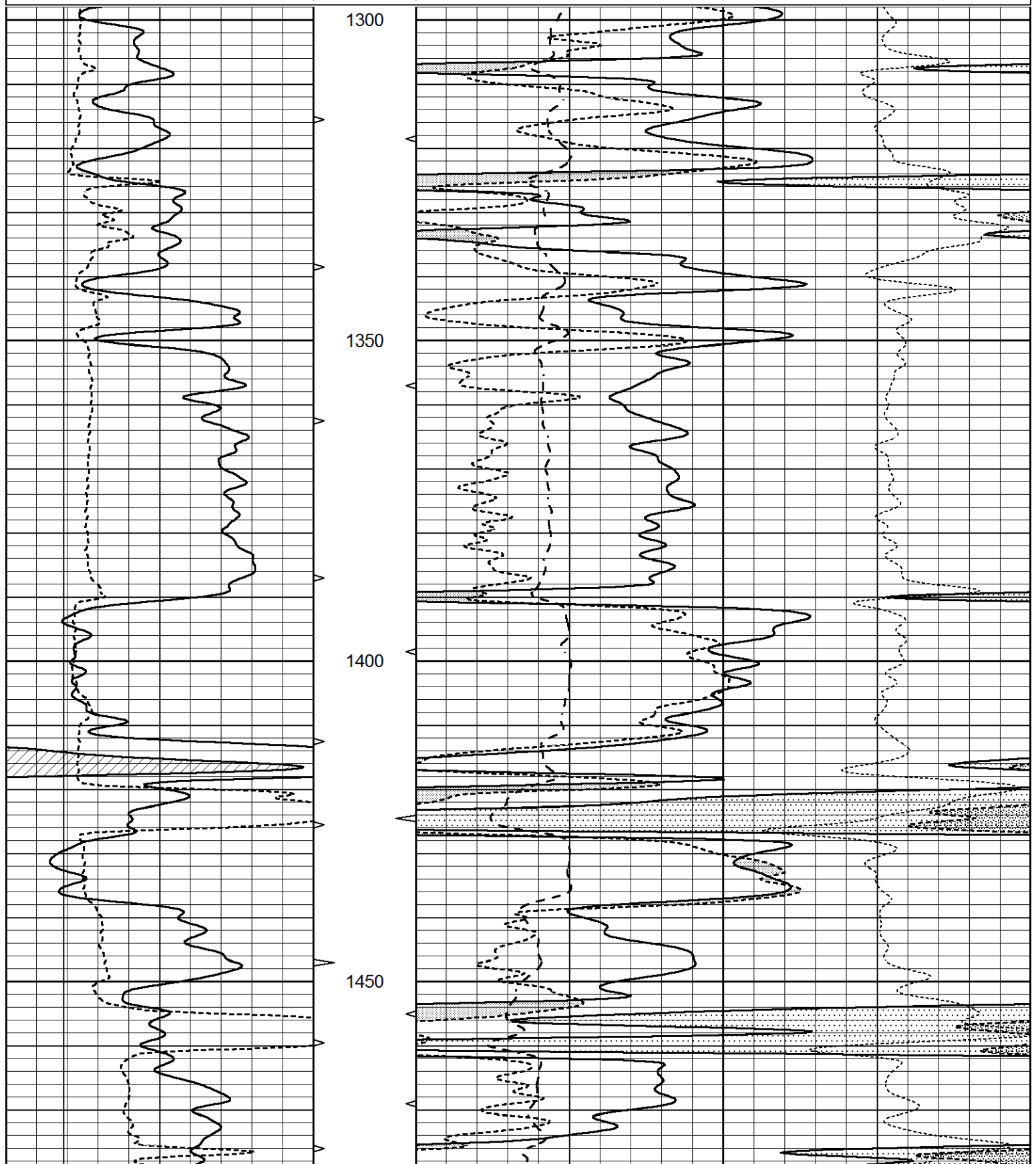
THANK YOU FOR USING ELI WIRELINE SERVICES, HAYS, KS. (785) 628-6395
DIRECTIONS
COUNCIL GROVE, KS. - 6 NORTH ON HWY 177 TO RD. K - 1 3/4 WEST - SOUTH INTO

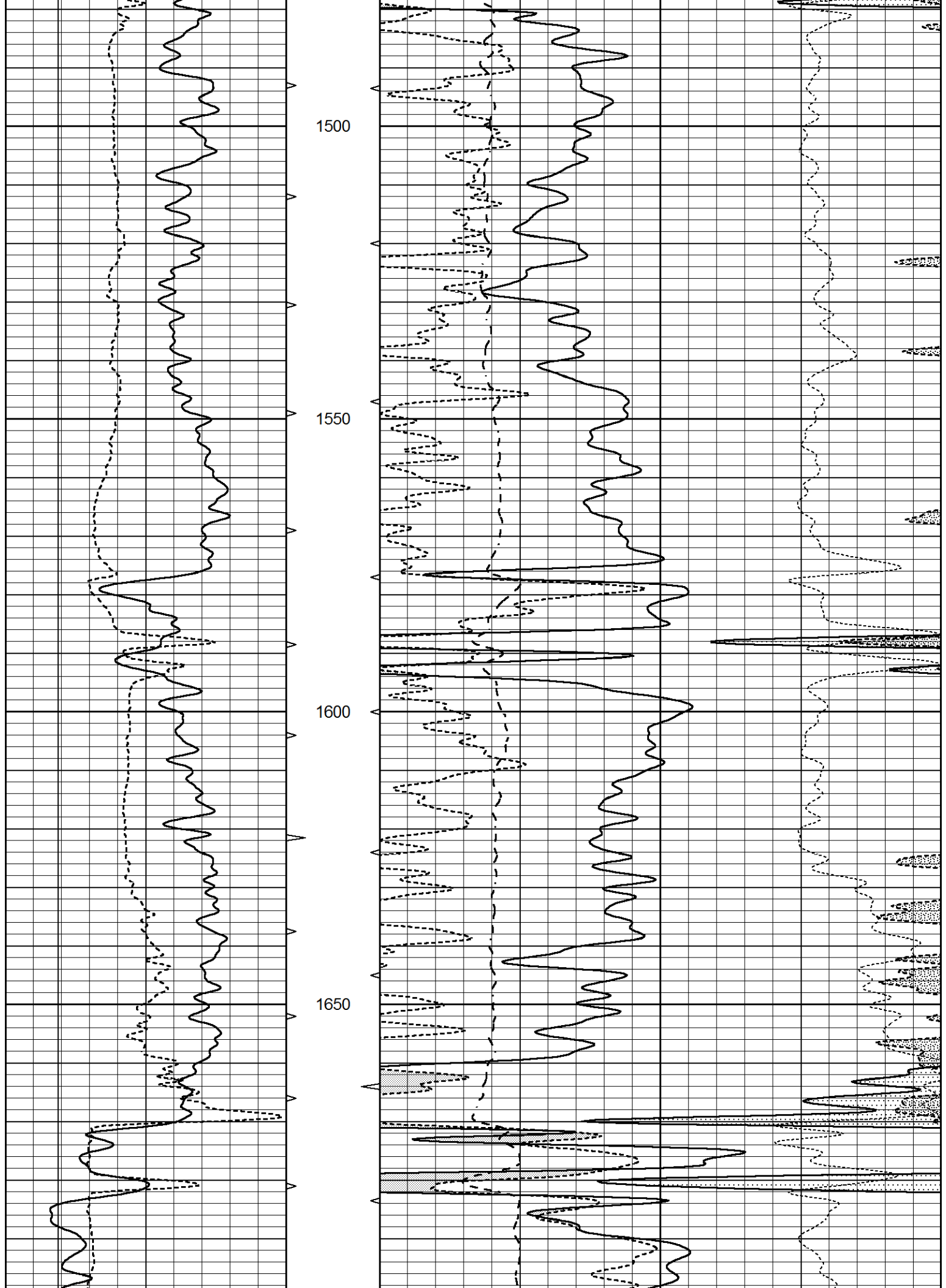


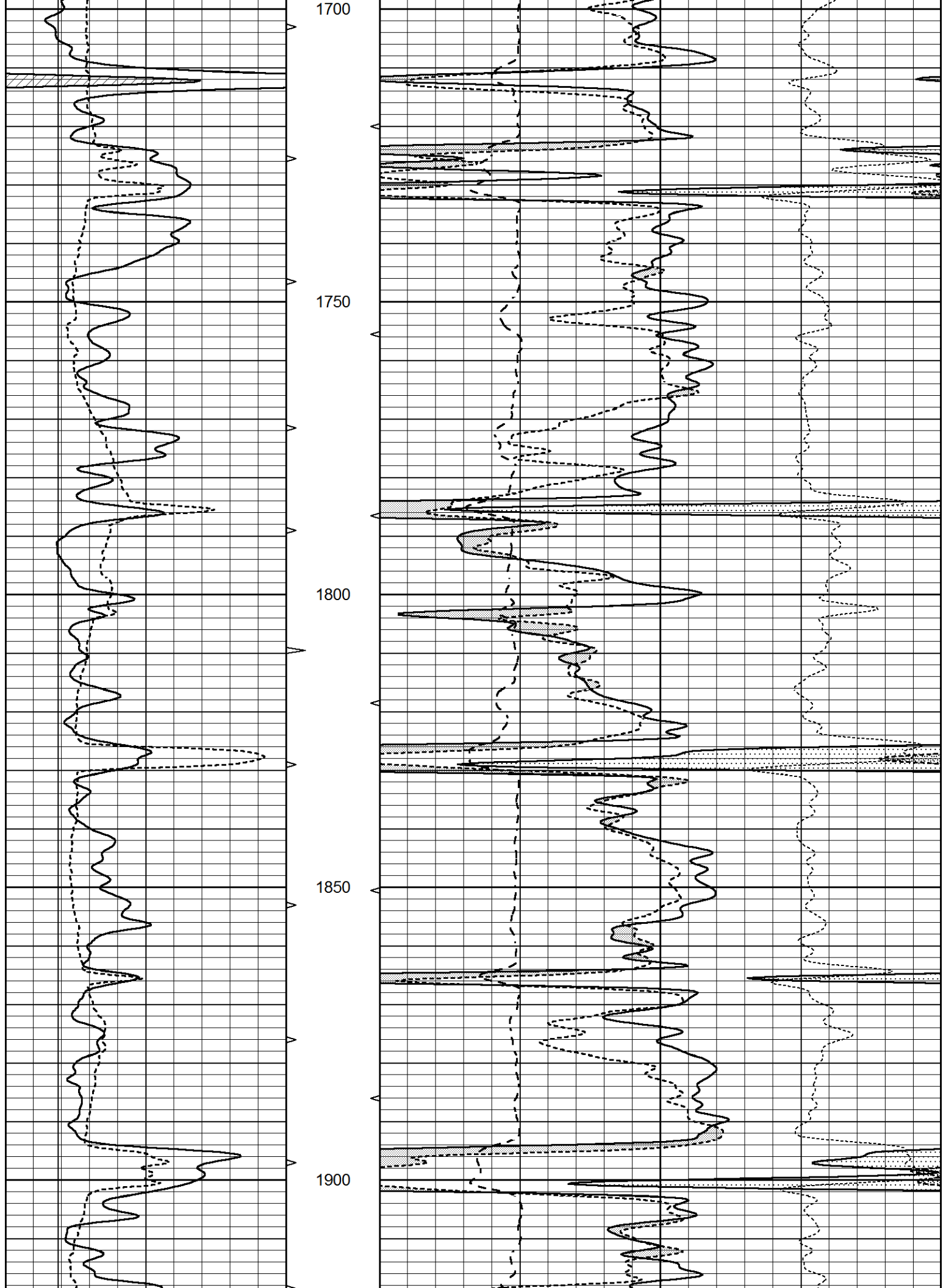
MAIN SECTION

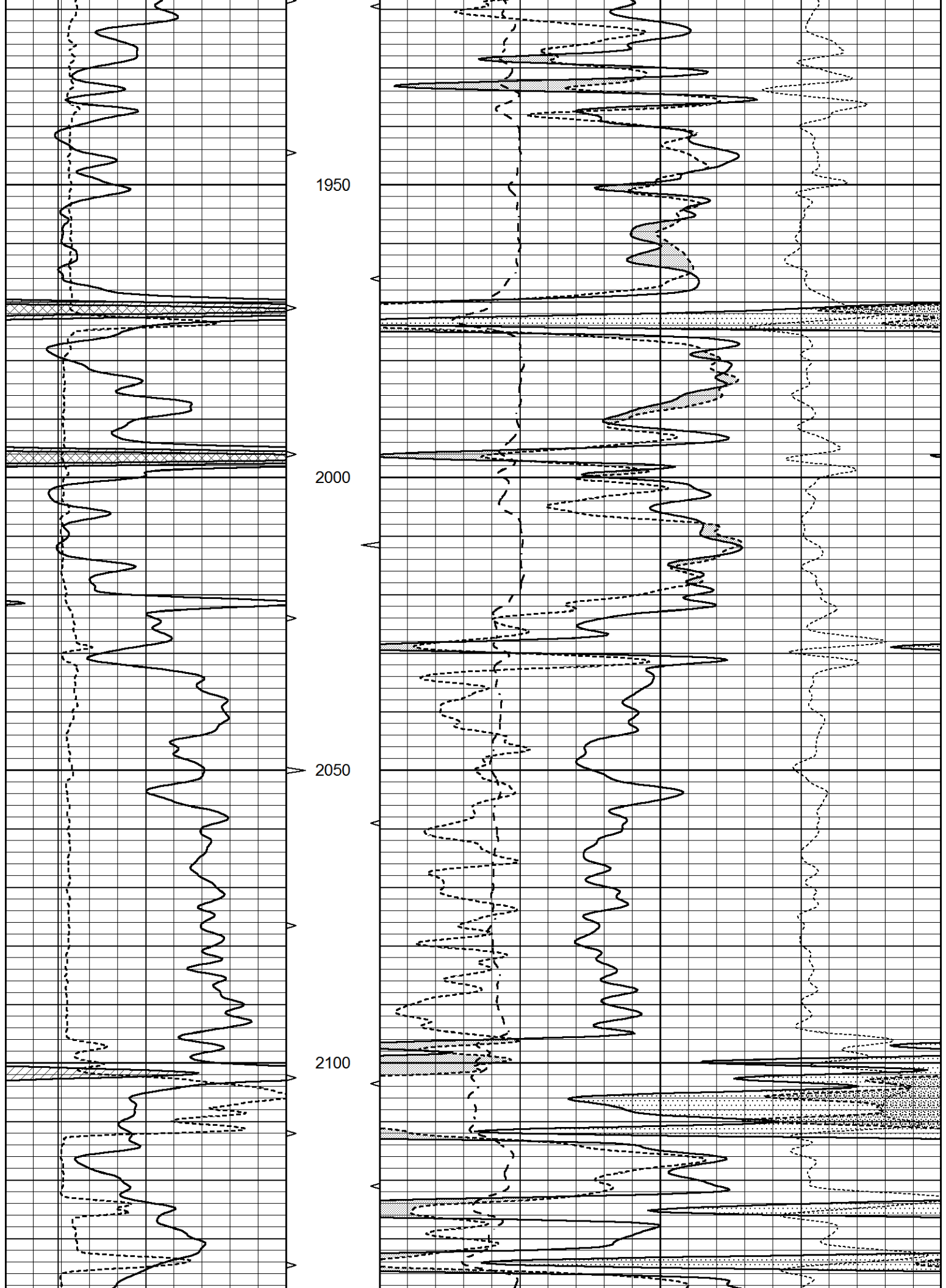
Database File 5858ddn.db
 Dataset Pathname pass3.1
 Presentation Format _ldt_neu
 Dataset Creation Fri Oct 01 02:04:59 2021
 Charted by Depth in Feet scaled 1:240

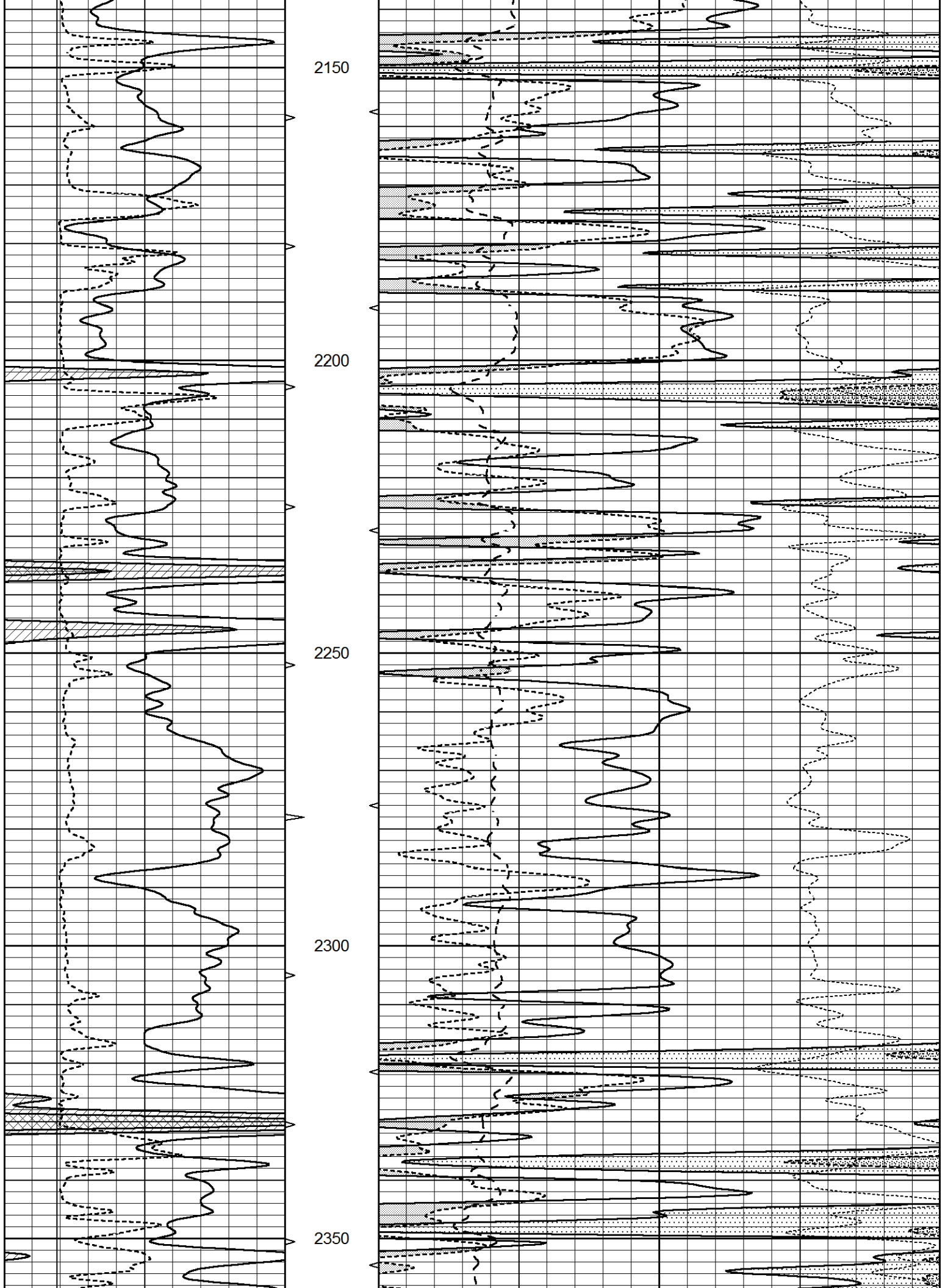
0	GAMMA RAY (GAPI)	150	ABHV	30	COMPENSATED DENSITY (pu)		-10
6	CALIPER (in)	16	10 (ft3)	0	COMPENSATED NEUTRON (pu)		-10
			TBHV	0	PE	10	-0.25
			0 (ft3)	10	CORRECTION (g/cc)		0.25
					0	LTEN (lb)	5000

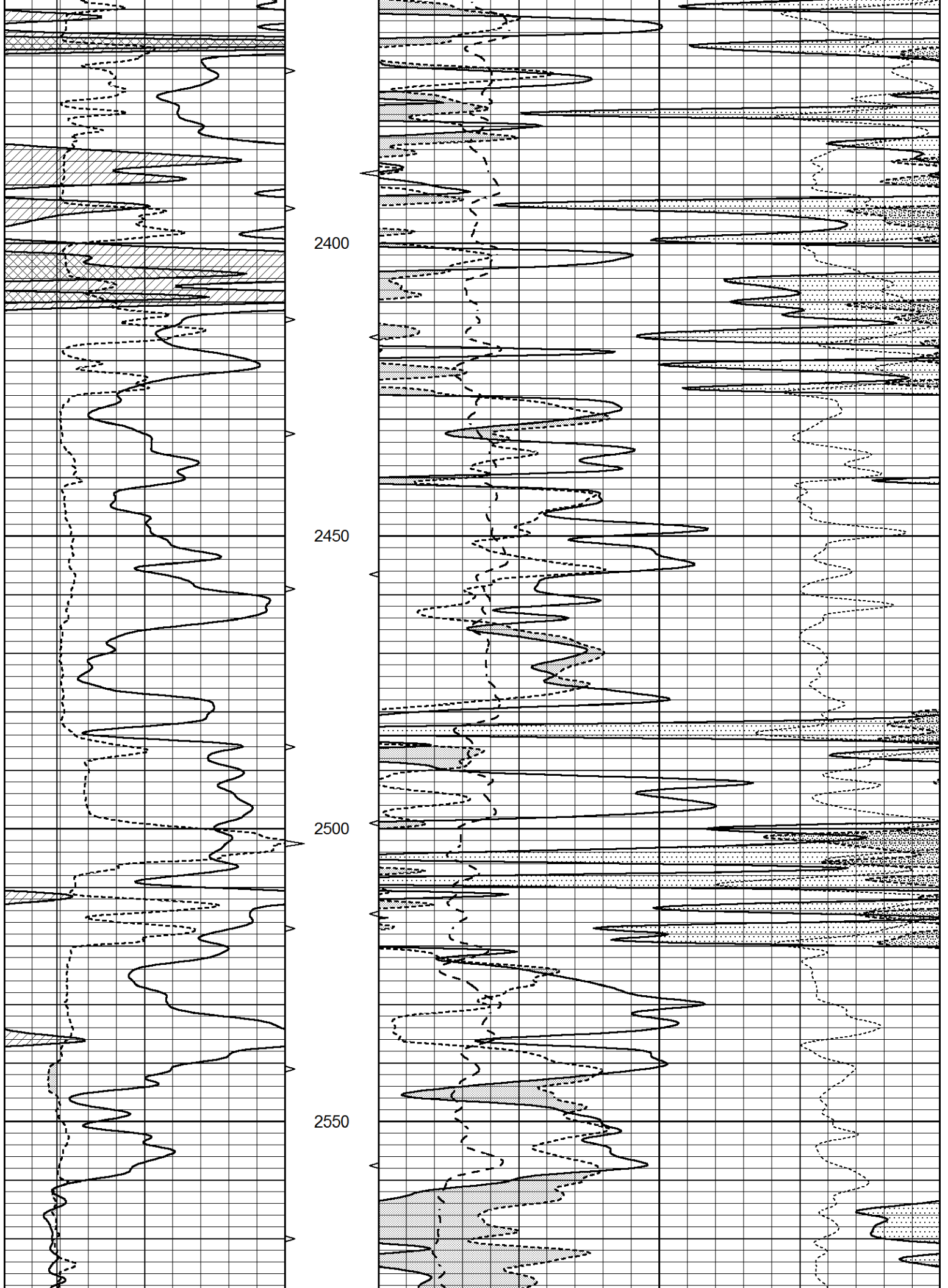


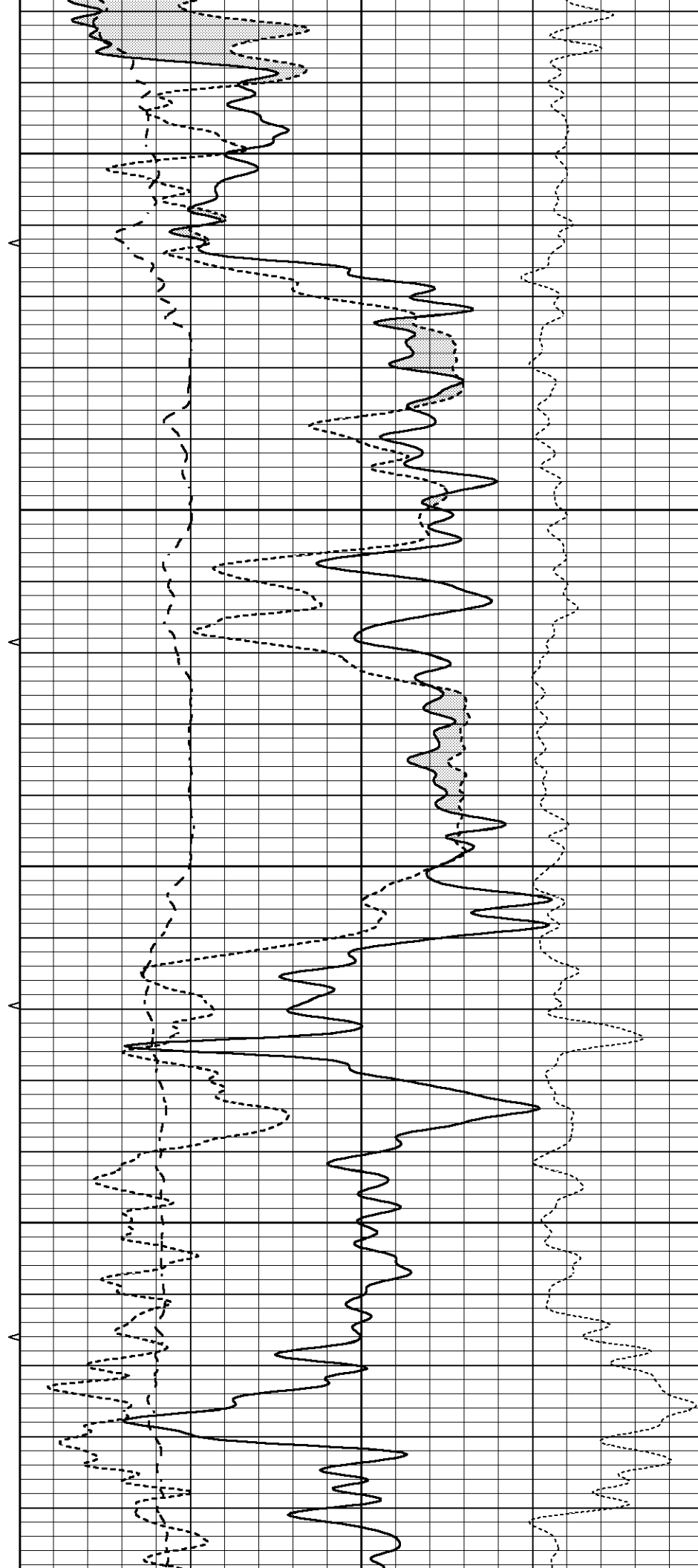
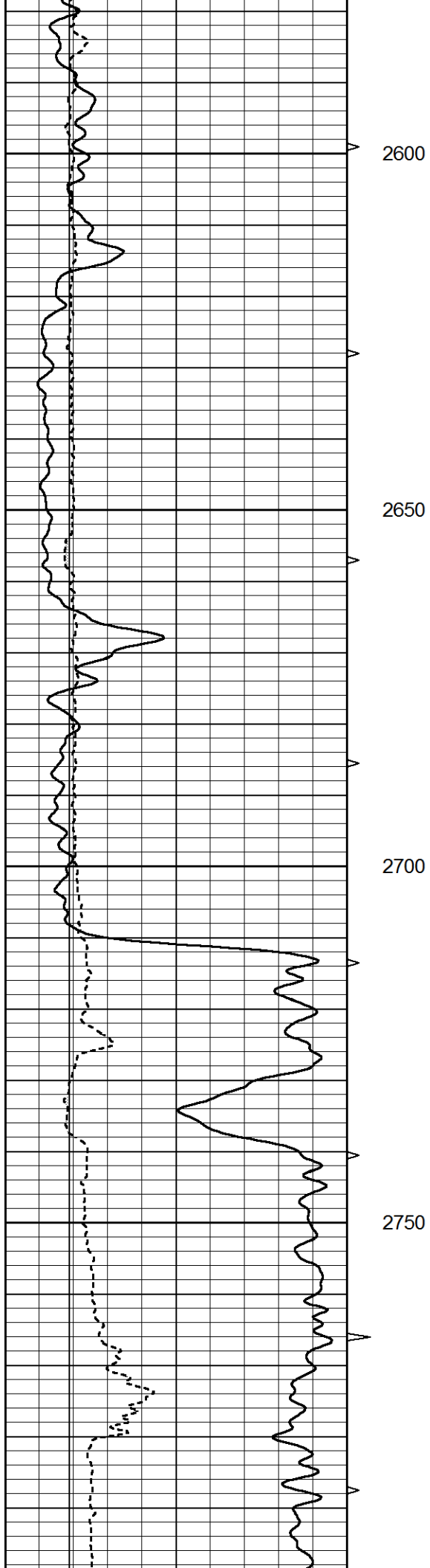


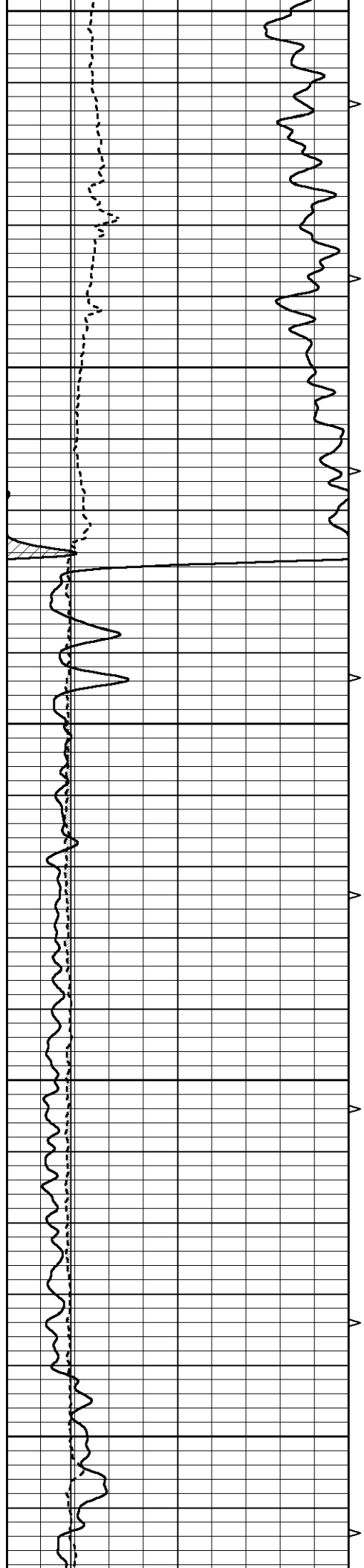




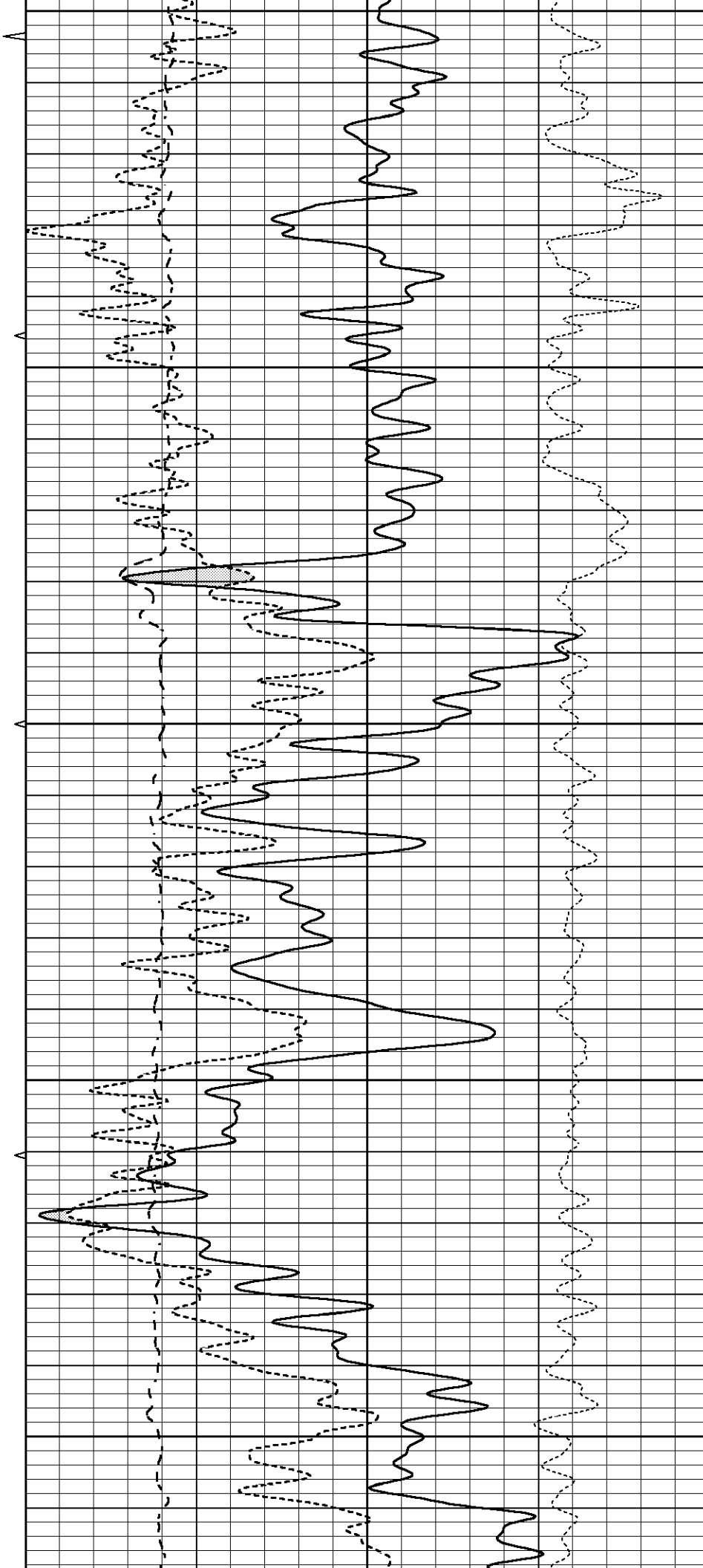


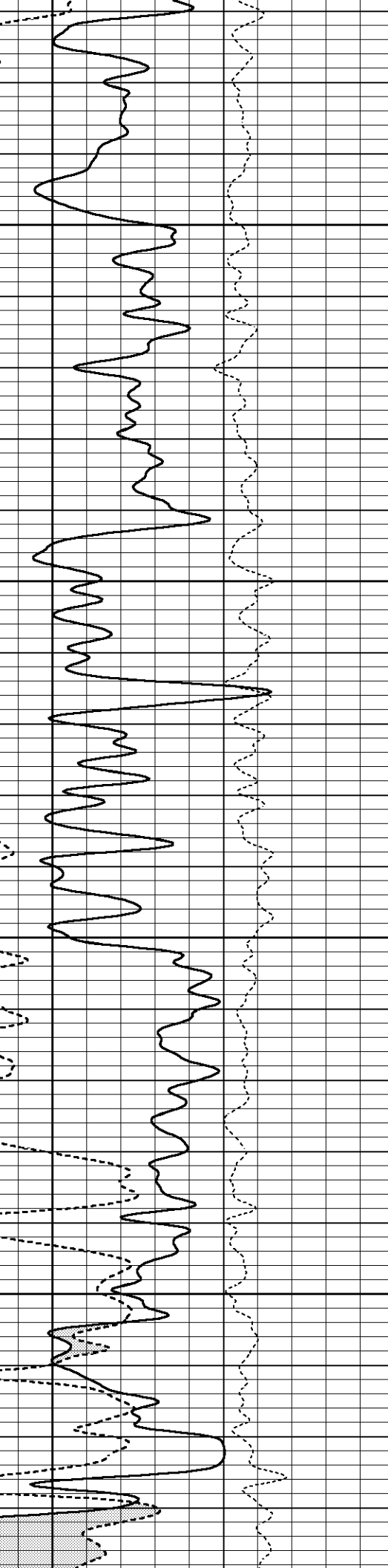
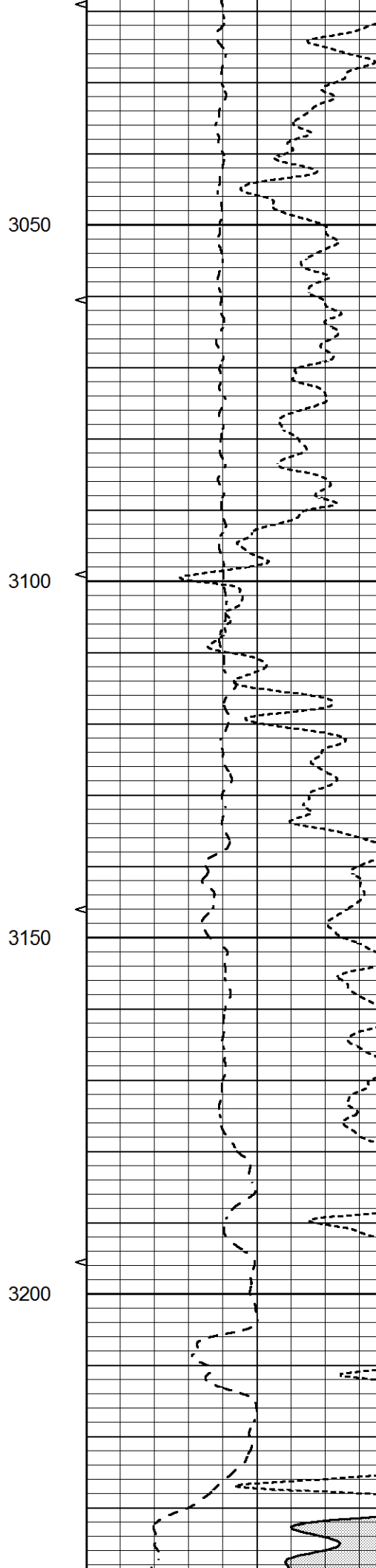
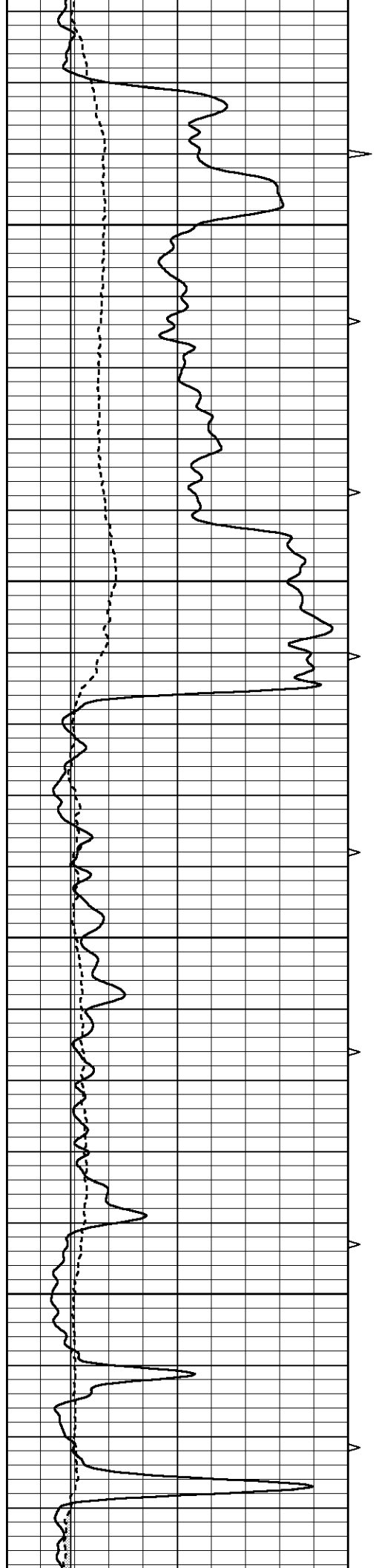


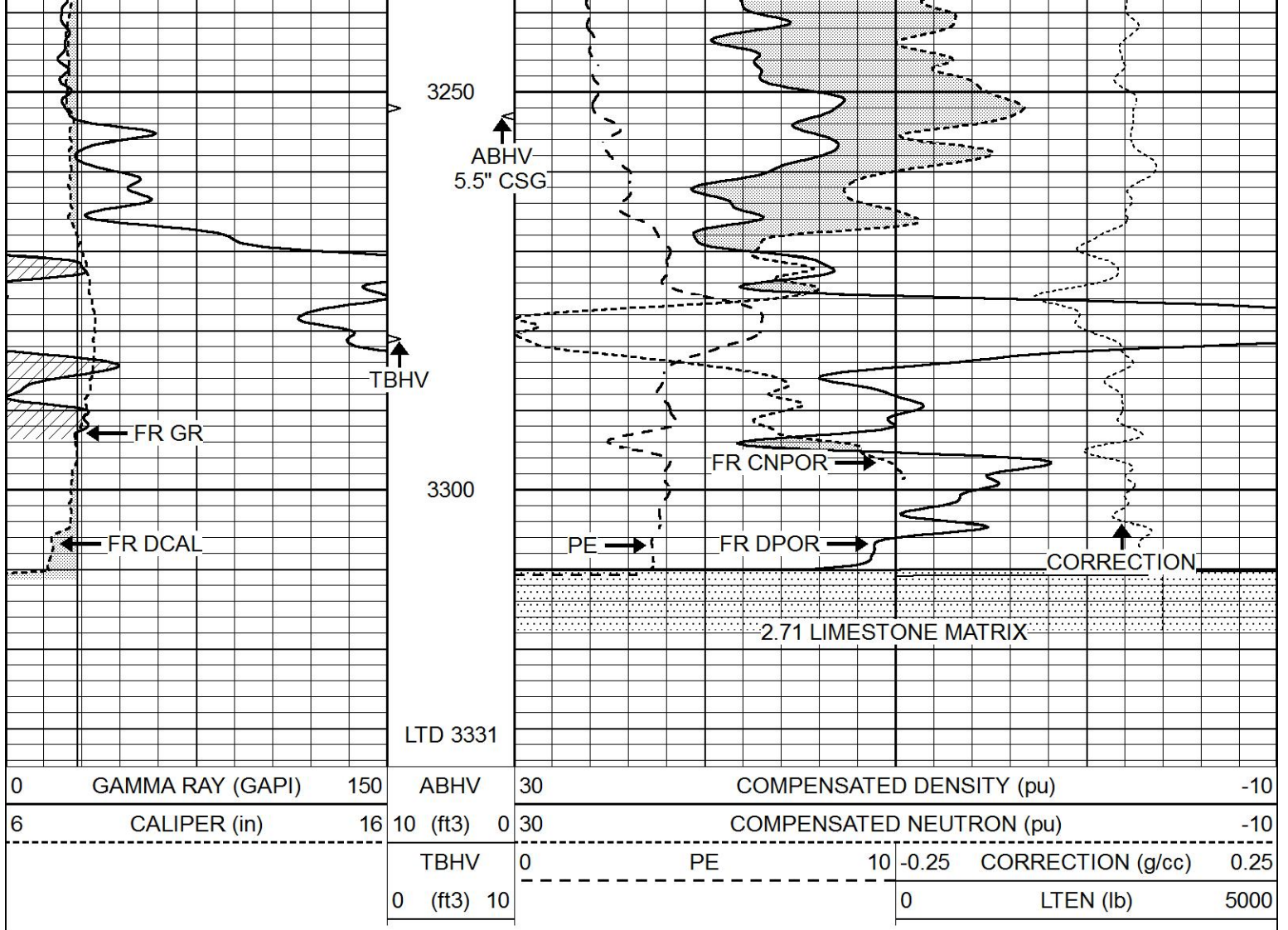




2800
2850
2900
2950
3000



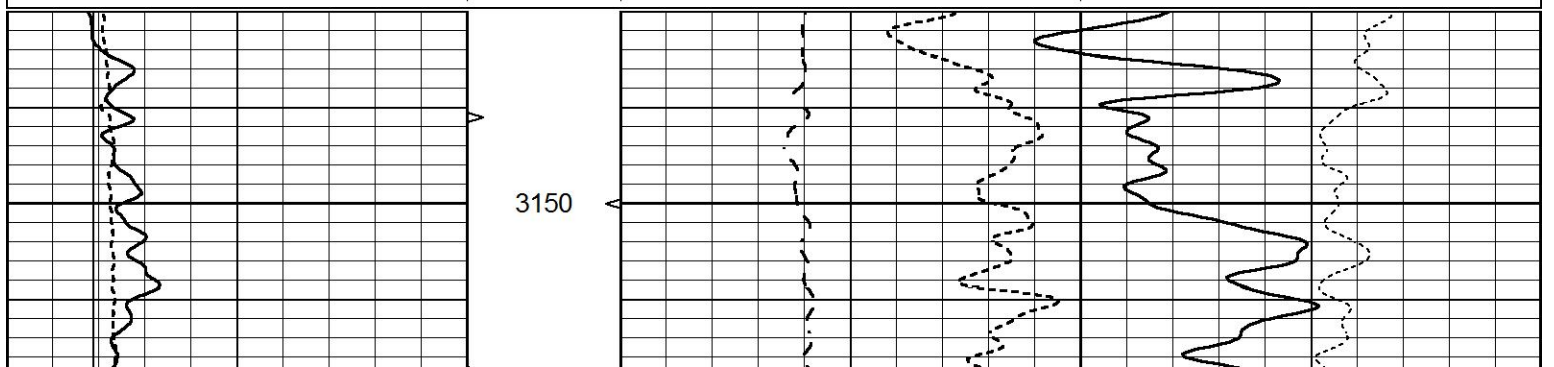




REPEAT SECTION

Database File 5858ddn.db
 Dataset Pathname pass2.2
 Presentation Format _ldt_neu
 Dataset Creation Fri Oct 01 02:10:15 2021
 Charted by Depth in Feet scaled 1:240

0	GAMMA RAY (GAPI)	150	ABHV	30	COMPENSATED DENSITY (pu)	-10
6	CALIPER (in)	16	10 (ft3) 0	30	COMPENSATED NEUTRON (pu)	-10
			TBHV	0	PE	10 -0.25
			0 (ft3) 10			CORRECTION (g/cc) 0.25
						0 LTEN (lb) 5000



Serial Model: FW1410-05-10BC
 Surface Cal Performed: Tue Feb 19 11:44:18 2019
 Downhole Cal Performed: Tue Feb 19 11:44:24 2019
 After Survey Verification Performed: Tue Feb 19 11:44:27 2019

Surface Calibration

Loop:	Readings			References			Results	
	Air	Loop	V	Air	Loop	mmho/m	m	b
Deep	0.011	0.656	V	1.000	400.000	mmho/m	618.595	-5.524
Medium	-0.000	0.731	V	1.000	400.000	mmho/m	545.377	1.170
Internal:	Zero	Cal		Zero	Cal		m	b
Deep	0.007	0.649	V	0.000	400.000	mmho/m	623.784	-4.595
Medium	0.004	0.743	V	0.000	464.000	mmho/m	627.284	-2.251

Downhole Calibration

	Readings			References			Results	
	Zero	Cal		Zero	Cal		m'	b'
Deep	-0.824	395.917	mmho/m	-0.976	397.550	mmho/m	1.004	-0.149
Medium	3.565	471.327	mmho/m	3.468	471.590	mmho/m	1.001	-0.099
LL3		7.503	V		1500.000	Ohm-m		
		0.001	V		20.000	Ohm-m		
		-7.481	V		3745.000	mmho-m		

After Survey Verification

	Readings			Targets			Results	
	Zero	Cal		Zero	Cal		m'	b'
Deep	0.000	0.000	mmho/m	-0.824	395.917	mmho/m	1.000	0.000
Medium	0.000	0.000	mmho/m	3.565	471.327	mmho/m	1.000	0.000
LL3		0.000	Ohm-m		1500.000	Ohm-m		
		0.000	Ohm-m		20.000	Ohm-m		
		0.000	mmho-m		3745.000	mmho-m		

Litho Density Calibration Report
 Serial: 140704
 Model: V4_10P
 Source Number: 74GBq-19

Master Calibration

Performed: Mon Dec 07 12:12:14 2020

	Background	Aluminum	Magnesium		
Window 1	557.73	5525.14	24361.20	cps	
Window 2	47.08	1245.09	5901.17	cps	
Window 4	239.06	1250.70	5456.76	cps	
Window 5	564.08	8300.56	16134.07	cps	
Window 6	44.21	1356.78	2705.40	cps	
Window 8	267.87	2686.97	5150.30	cps	
Bulk Density	-	2.6020	1.6830	g/cc	
Pe	-	3.0000	2.5070	b/e	
LS Alpha:	: -1.8719	SS Alpha:	: -0.8000	LS CPE:	: 1.1424
LS Beta:	: 135562.6841	SS Beta:	: 20128.7209	SS CPE:	: 1.5489

Before Survey Background Counts Verification

Performed: Wed Dec 31 18:00:00 1969

Window 1	0.00	cps
Window 2	0.00	cps
Window 4	0.00	cps

Window 5	0.00	cps
Window 6	0.00	cps
Window 8	0.00	cps

After Survey Background Counts Verification Performed: Wed Dec 31 18:00:00 1969

Window 1	0.00	cps
Window 2	0.00	cps
Window 4	0.00	cps
Window 5	0.00	cps
Window 6	0.00	cps
Window 8	0.00	cps

Lithodensity Caliper Calibration Performed: Mon Dec 07 12:12:14 2020

Results		Readings		References (in)		Gain	Offset
Low	High	Low	High				
5852.8	8972.7	8.0	14.0			0.0	-3.3

Before Survey Caliper Verification Performed:

	Reference	Reading
Caliper (in)	_____	_____

After Survey Caliper Verification Performed:

	Reference	Reading
Caliper (in)	_____	_____

Compensated Neutron Calibration Report

Serial Number: 080621PMC
Tool Model: NABORS

PRE-SURVEY VERIFICATION

Detector	Readings	Measured	Target
Short Space	cps		
Long Space	cps	pu	pu

POST-SURVEY VERIFICATION

Detector	Readings	Measured	Target
Short Space	cps		
Long Space	cps	pu	pu

Gamma Ray Calibration Report

Serial Number:	7
Tool Model:	Probe1
Performed:	Tue Jan 19 17:50:08 2021
Calibrator Value:	1.0 GAPI
Background Reading:	0.0 cps
Calibrator Reading:	1.0 cps

Sensitivity:

0.5300

GAPI/cps