

MICRO LOG



Company BLUERIDGE PETROLEUM CORPORATION  
 Well BACON #1-16  
 Field WILDCAT  
 County MORRIS State KANSAS

Location: API #: 15-127-20603-0000  
 423' FNL & 1194' FWL  
 SE NE NW NW  
 Permanent Datum GROUND LEVEL Elevation 1396  
 Log Measured From KELLY BUSHING 12' A.G.L.  
 Drilling Measured From KELLY BUSHING

Company BLUERIDGE PETROLEUM CORPORATION  
 Well BACON #1-16  
 Field WILDCAT  
 County MORRIS  
 State KANSAS

Date	10/1/21		
Run Number	TWO		
Depth Driller	3330		
Depth Logger	3331		
Bottom Logged Interval	3313		
Top Log Interval	1300		
Casing Driller	8 5/8" @ 244		
Casing Logger	244		
Bit Size	7 7/8		
Type Fluid in Hole	CHEMICAL MUD	CHLORIDES 400 PPM	
Density / Viscosity	9.0/48		
pH / Fluid Loss	10.5/9.9		
Source of Sample	FLOWLINE		
Rm @ Meas. Temp	1.20 @ 72F		
Rmf @ Meas. Temp	0.90 @ 72F		
Rmc @ Meas. Temp	1.44 @ 72F		
Source of Rmf / Rmc	MEASUREMENT		
Rm @ BHT	0.78 @ 110F		
Time Circulation Stopped	2 HOURS		
Time Logger on Bottom	////		
Maximum Recorded Temperature	110F		
Equipment Number	3802		
Location	HAYS, KANSAS		
Recorded By	JASON CAPPELLUCCI		
Witnessed By	JIM MUSGROVE		

<<< Fold Here >>>

All interpretations are opinions based on inferences from electrical or other measurements and we cannot and do not guarantee the accuracy or correctness of any interpretation, and we shall not, except in the case of gross or willful negligence on our part, be liable or responsible for any loss, costs, damages, or expenses incurred or sustained by anyone resulting from any interpretation made by any of our officers, agents or employees. These interpretations are also subject to our general terms and conditions set out in our current Price Schedule.

Comments

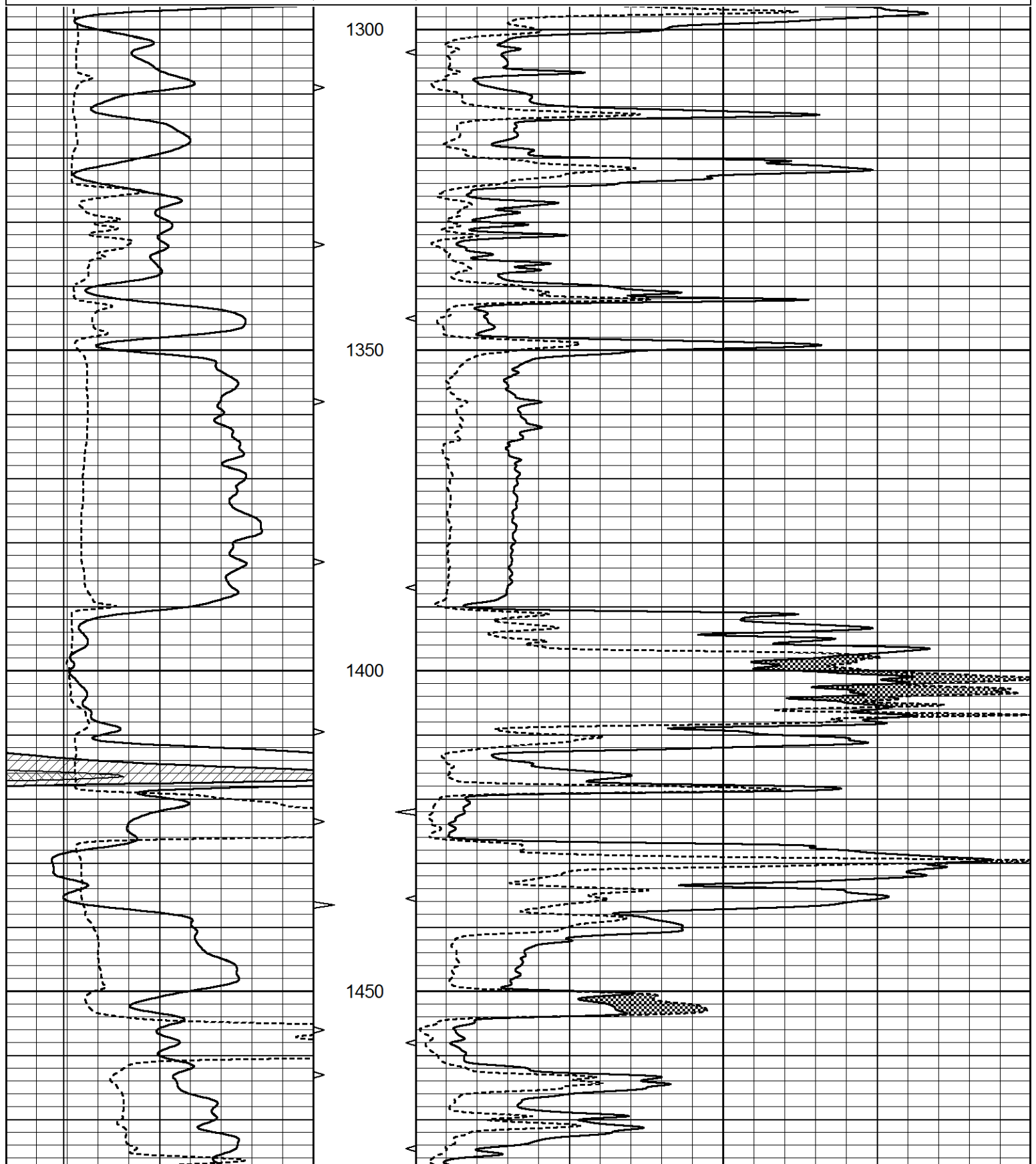
THANK YOU FOR USING ELI WIRELINE SERVICES, HAYS, KS. ( 785 ) 628-6395  
 DIRECTIONS  
 COUNCIL GROVE, KS. - 6 NORTH ON HWY 177 TO RD. K - 1 3/4 WEST - SOUTH INTO

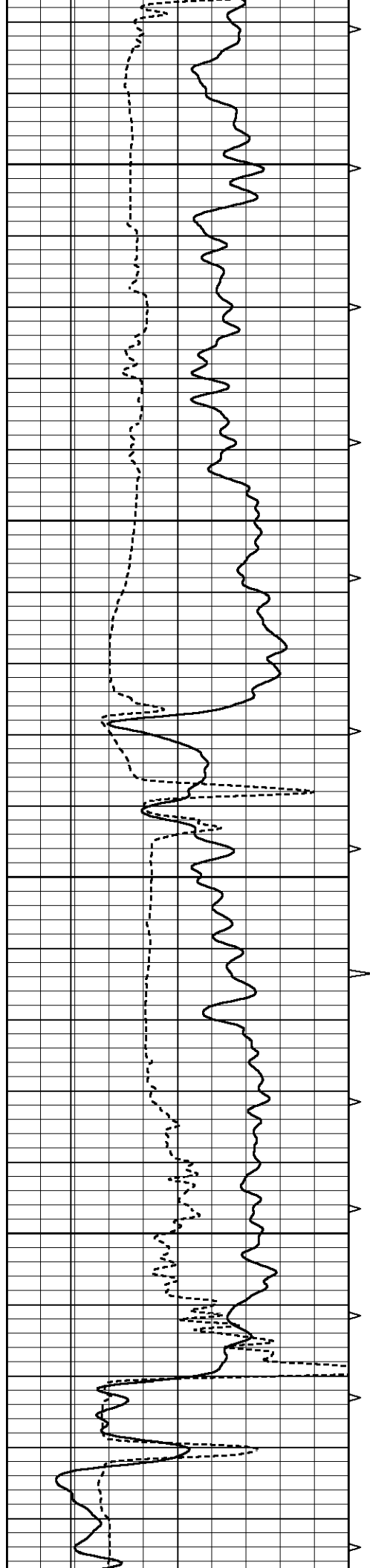


MAIN SECTION

Database File 5858ddn.db  
 Dataset Pathname pass6.1  
 Presentation Format \_micro  
 Dataset Creation Fri Oct 01 04:30:42 2021  
 Charted by Depth in Feet scaled 1:240

0	GAMMA RAY (GAPI)	150	ABHV	0	MEL1.5 (Ohm-m)	40
6	CALIPER (in)	16	10 (ft3)	0	MEL2.0 (Ohm-m)	40
			TBHV			
			0 (ft3)	10		



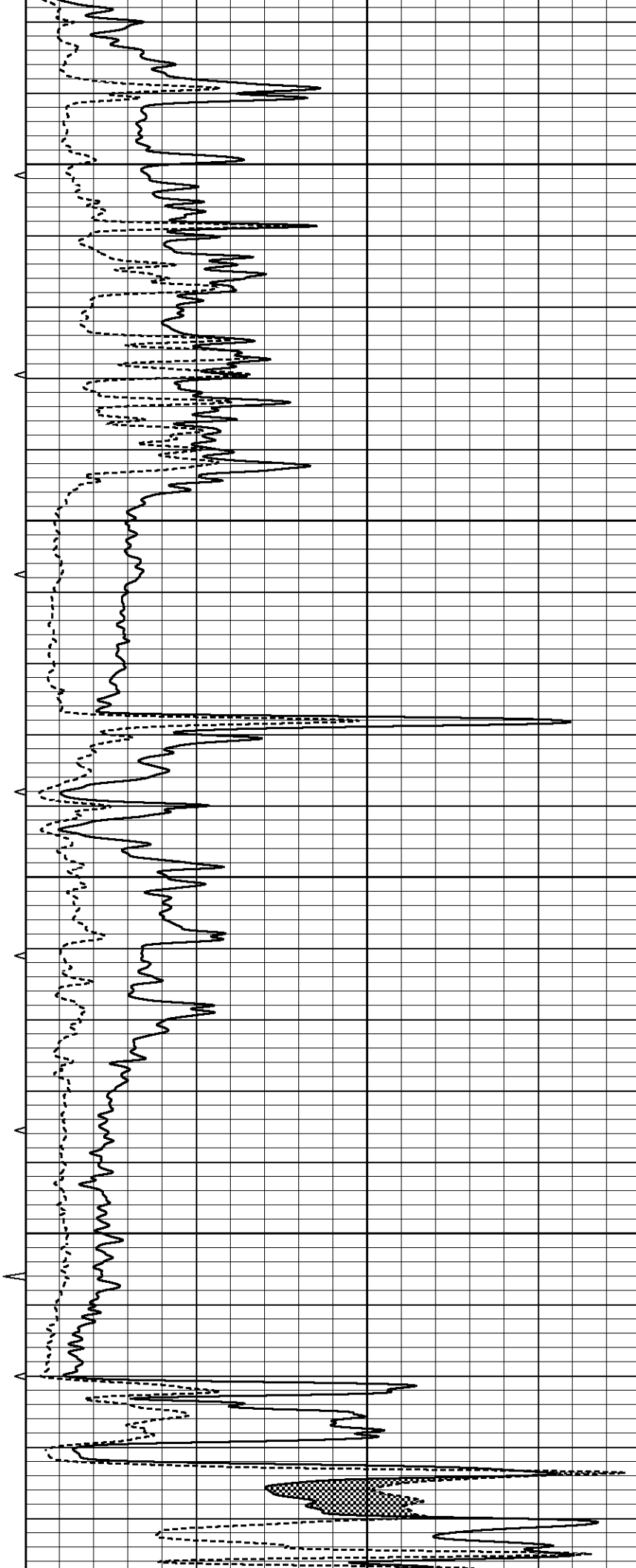


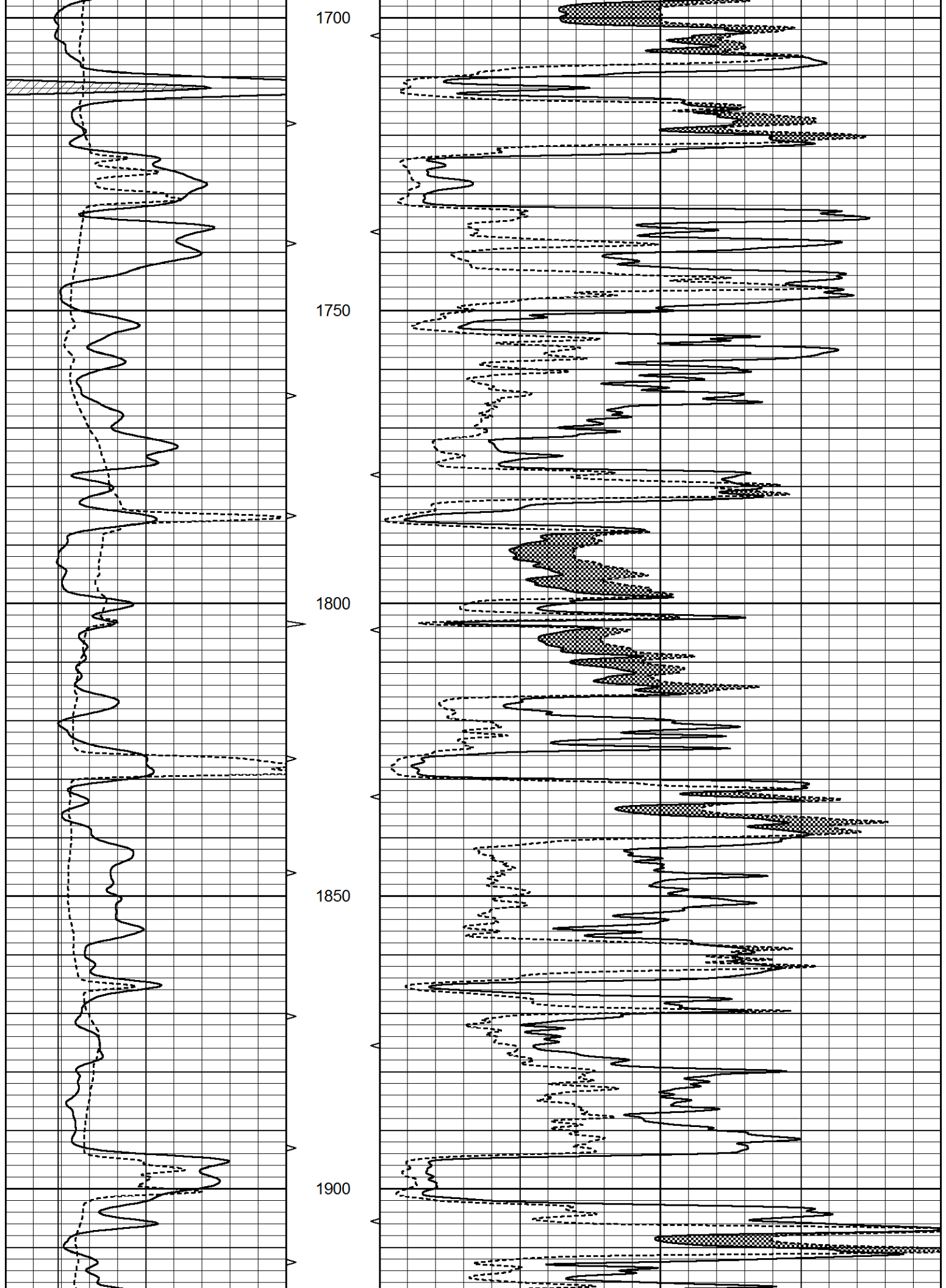
1500

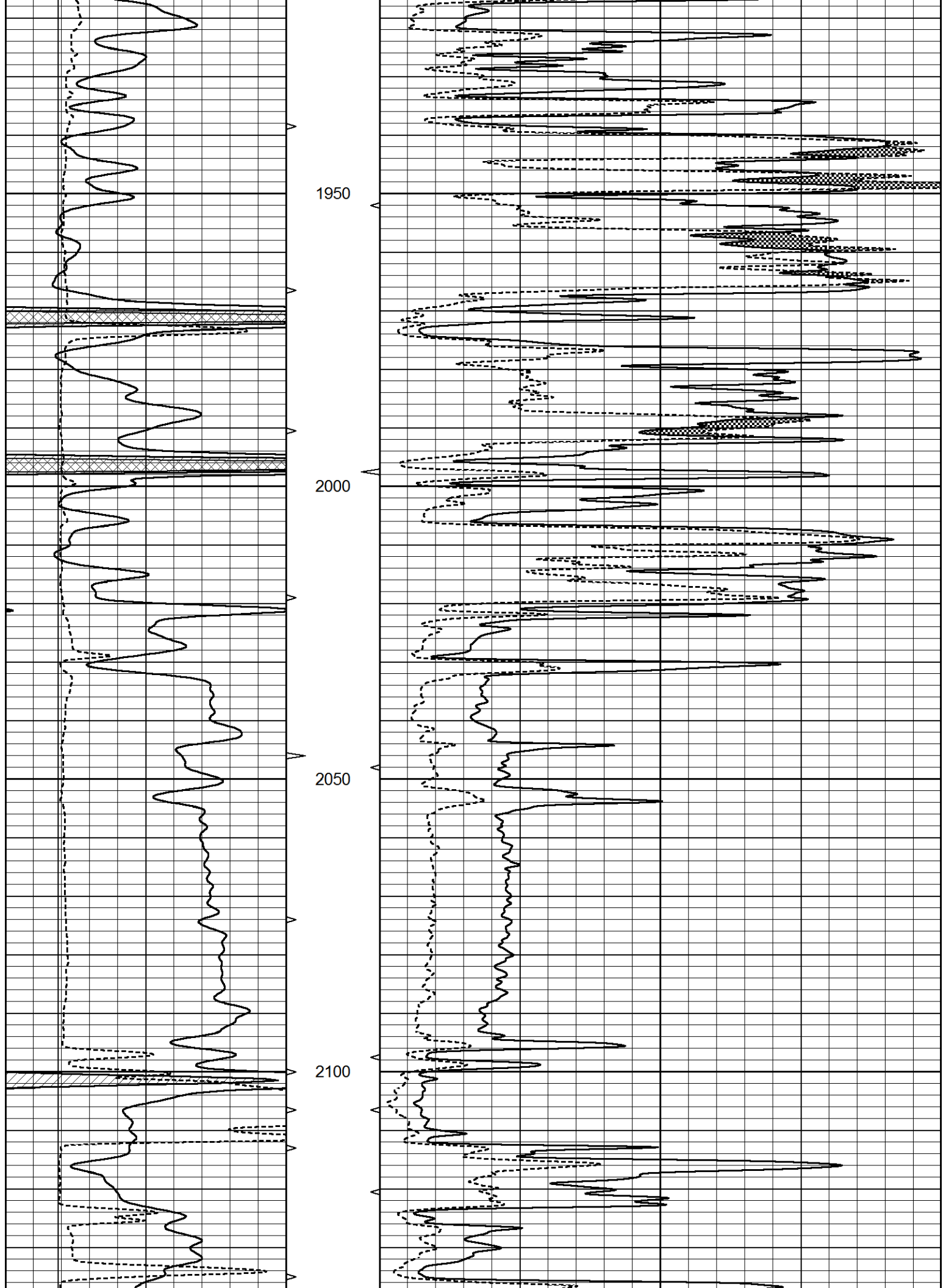
1550

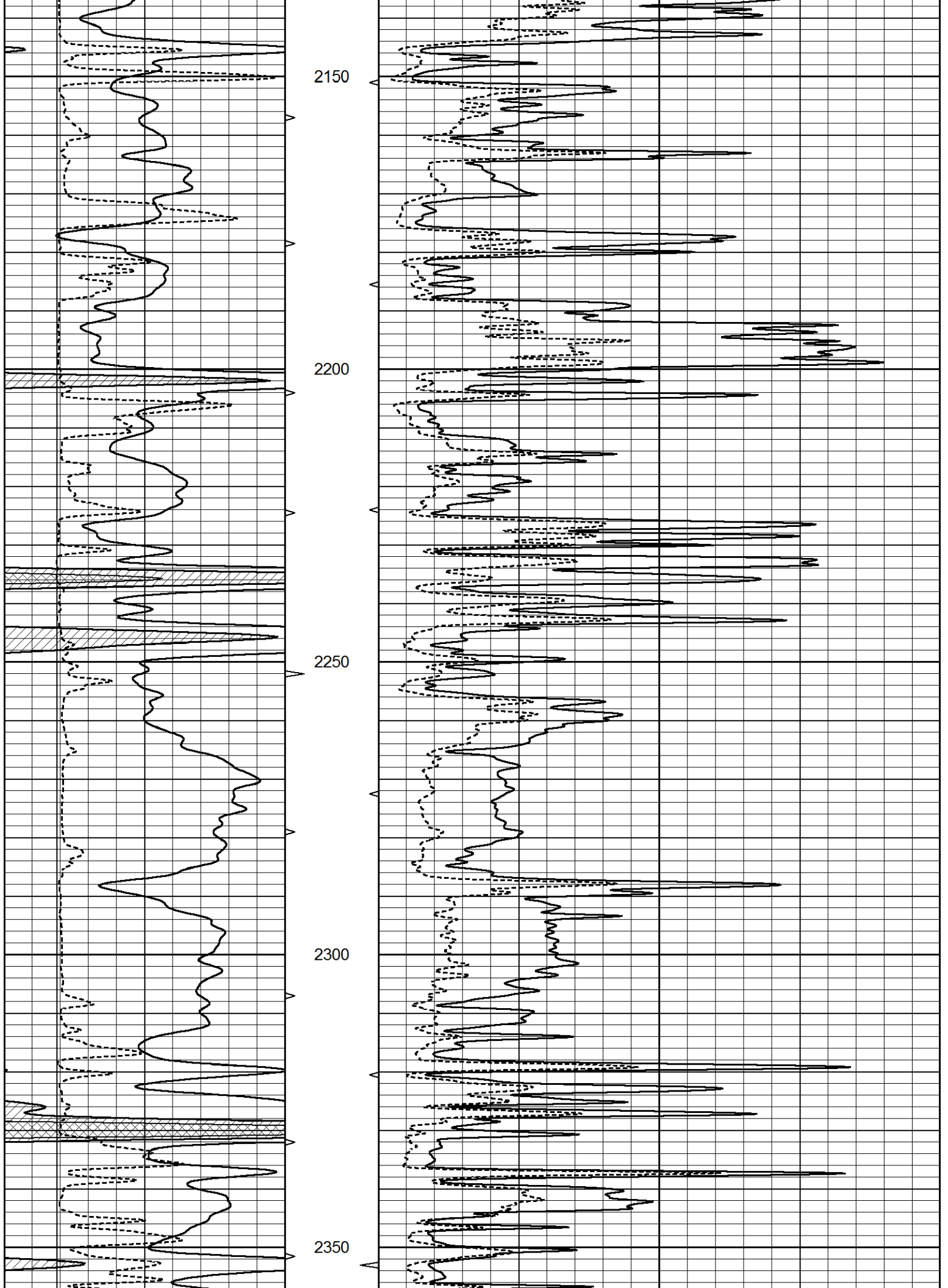
1600

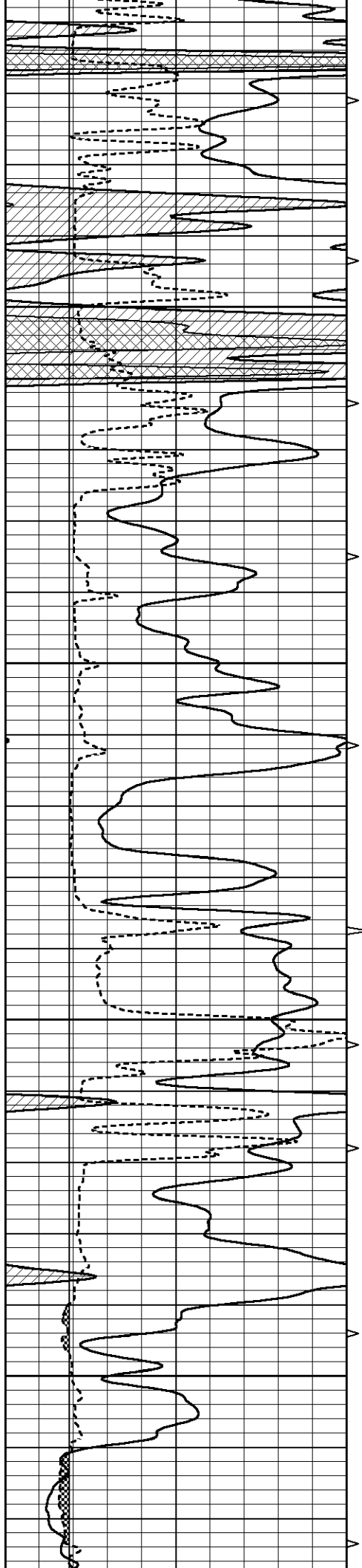
1650









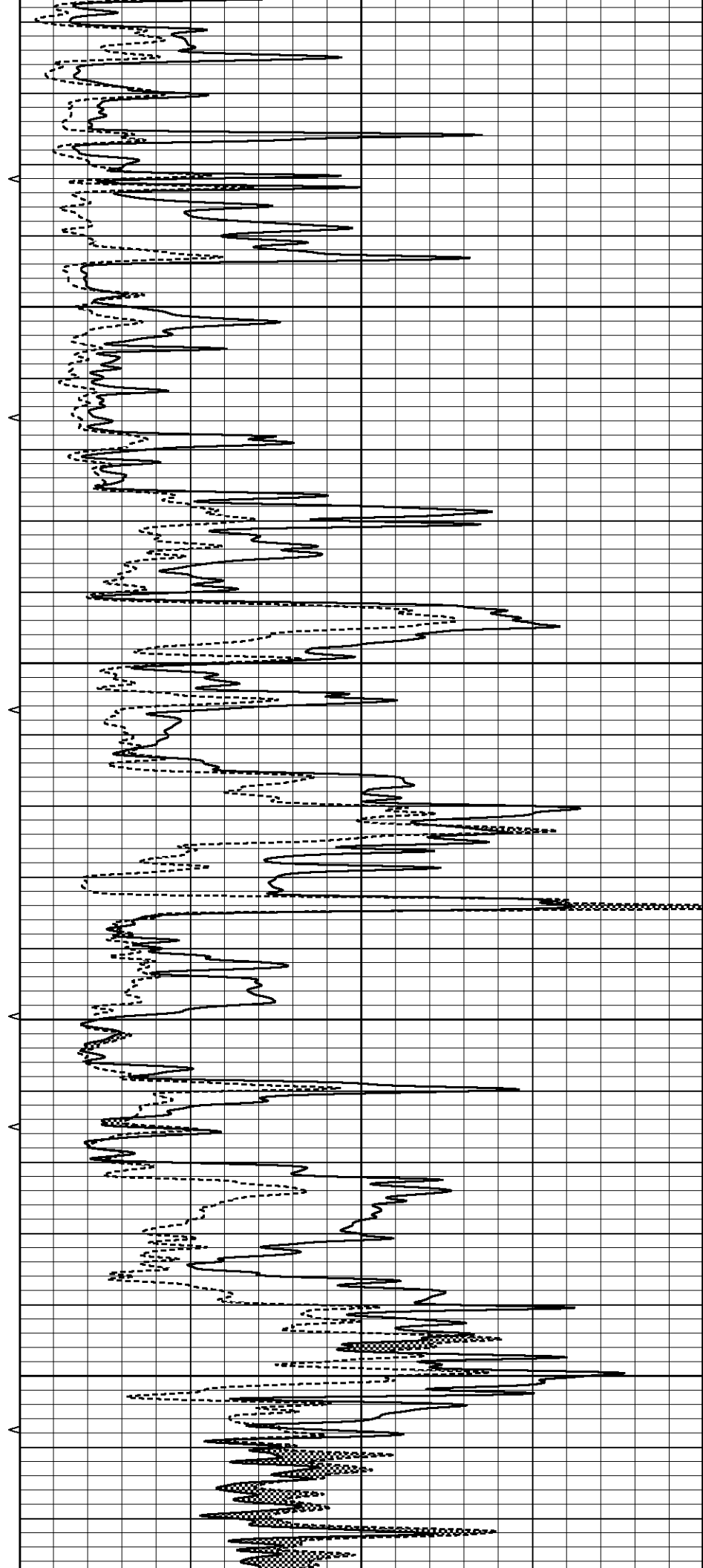


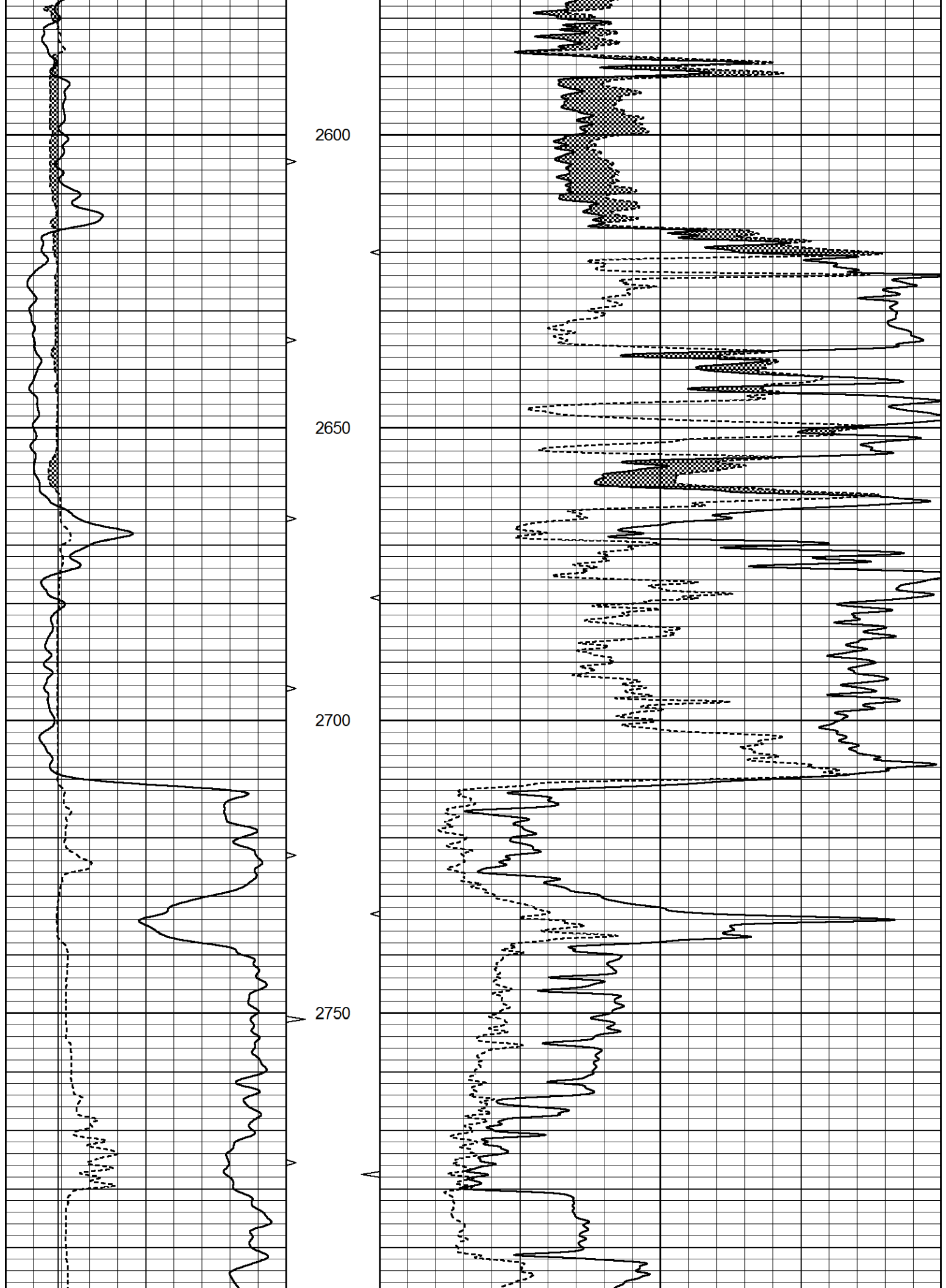
2400

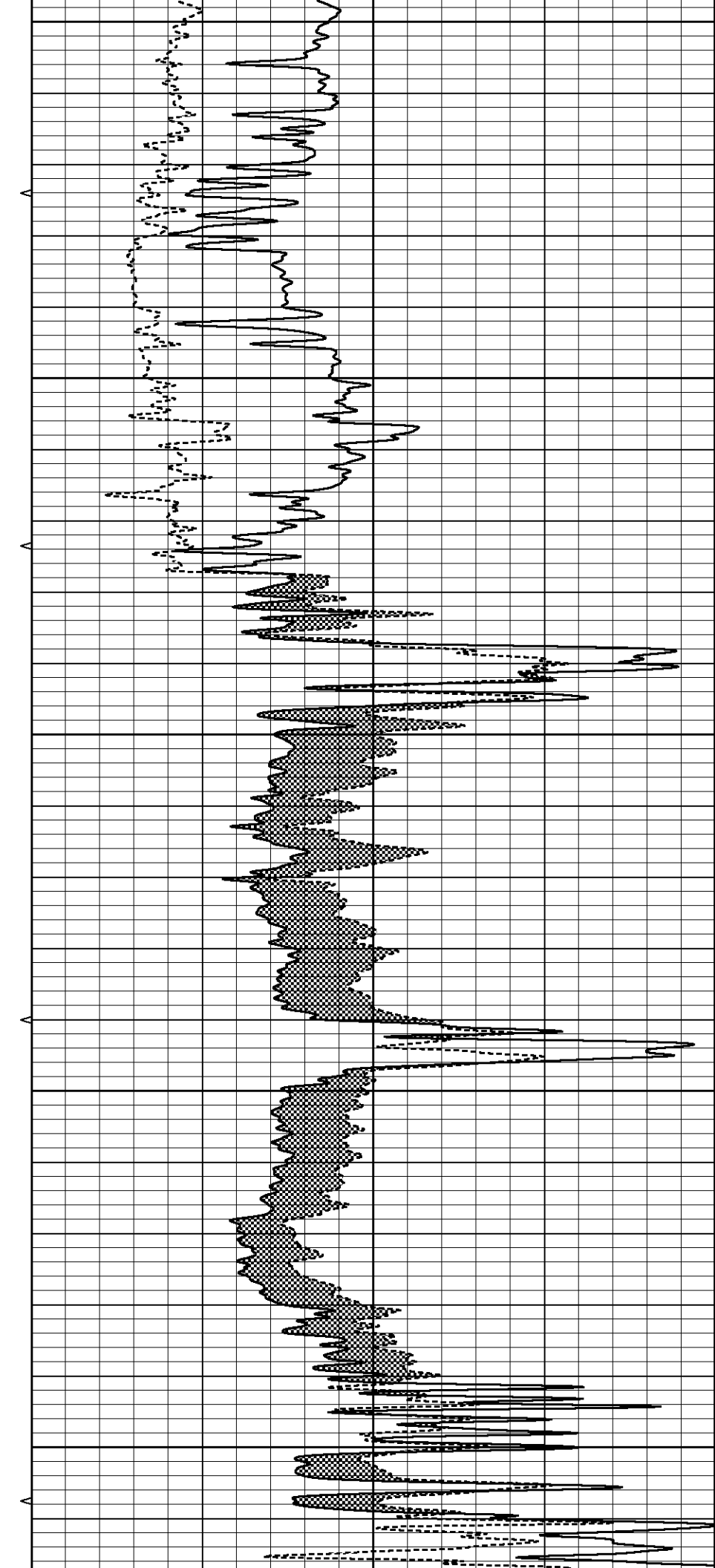
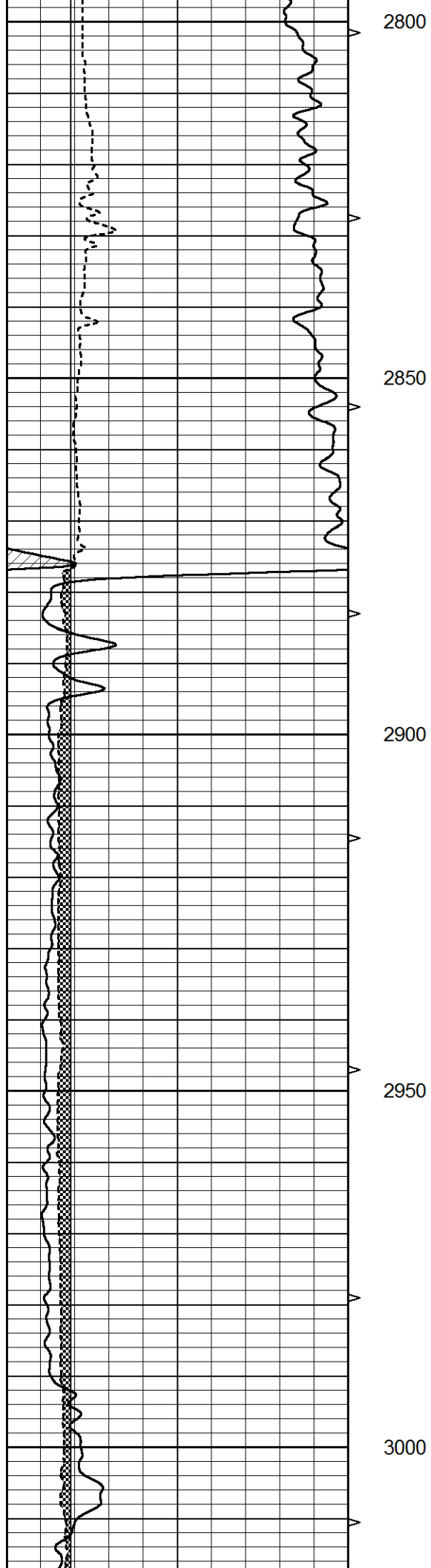
2450

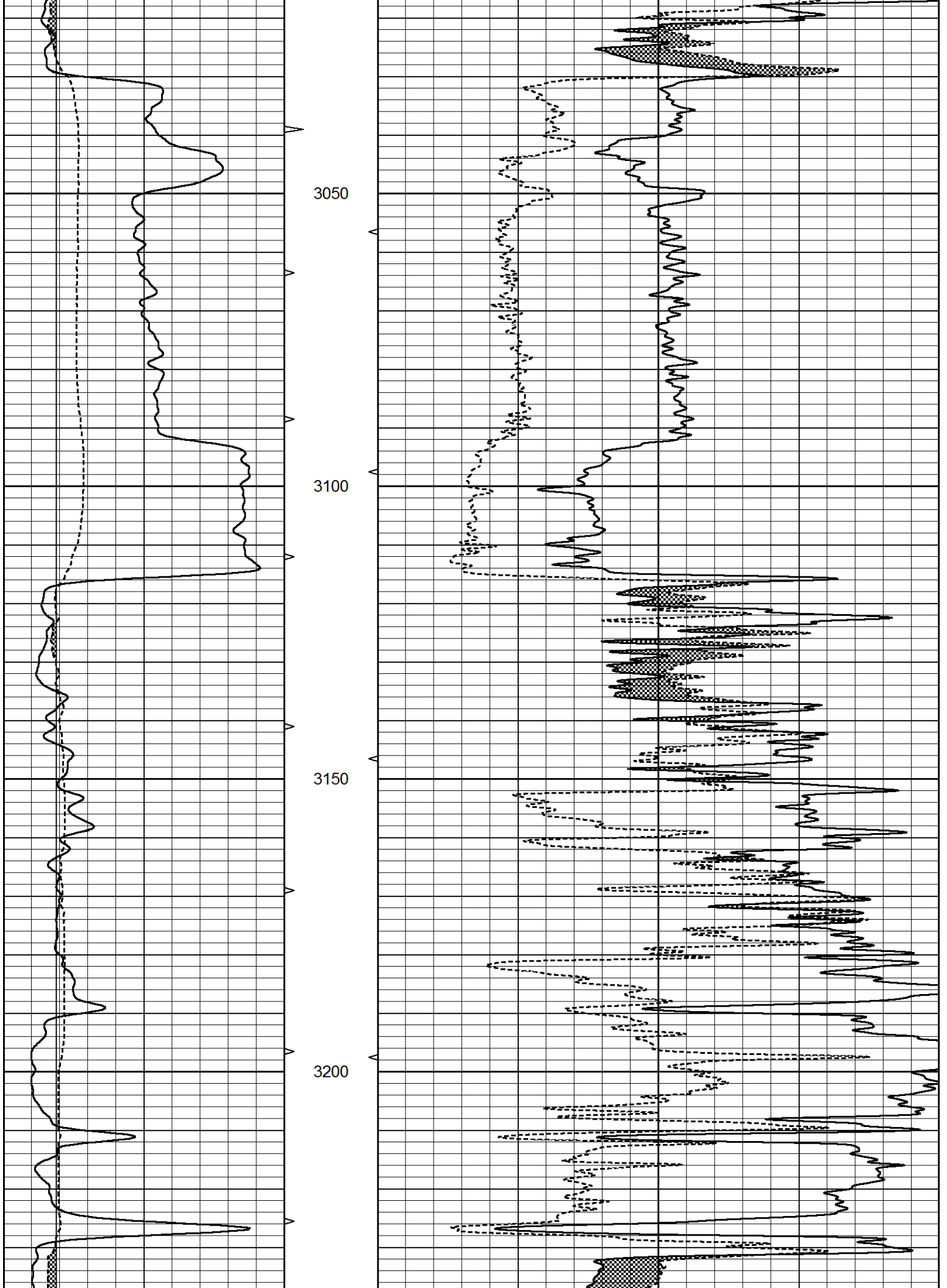
2500

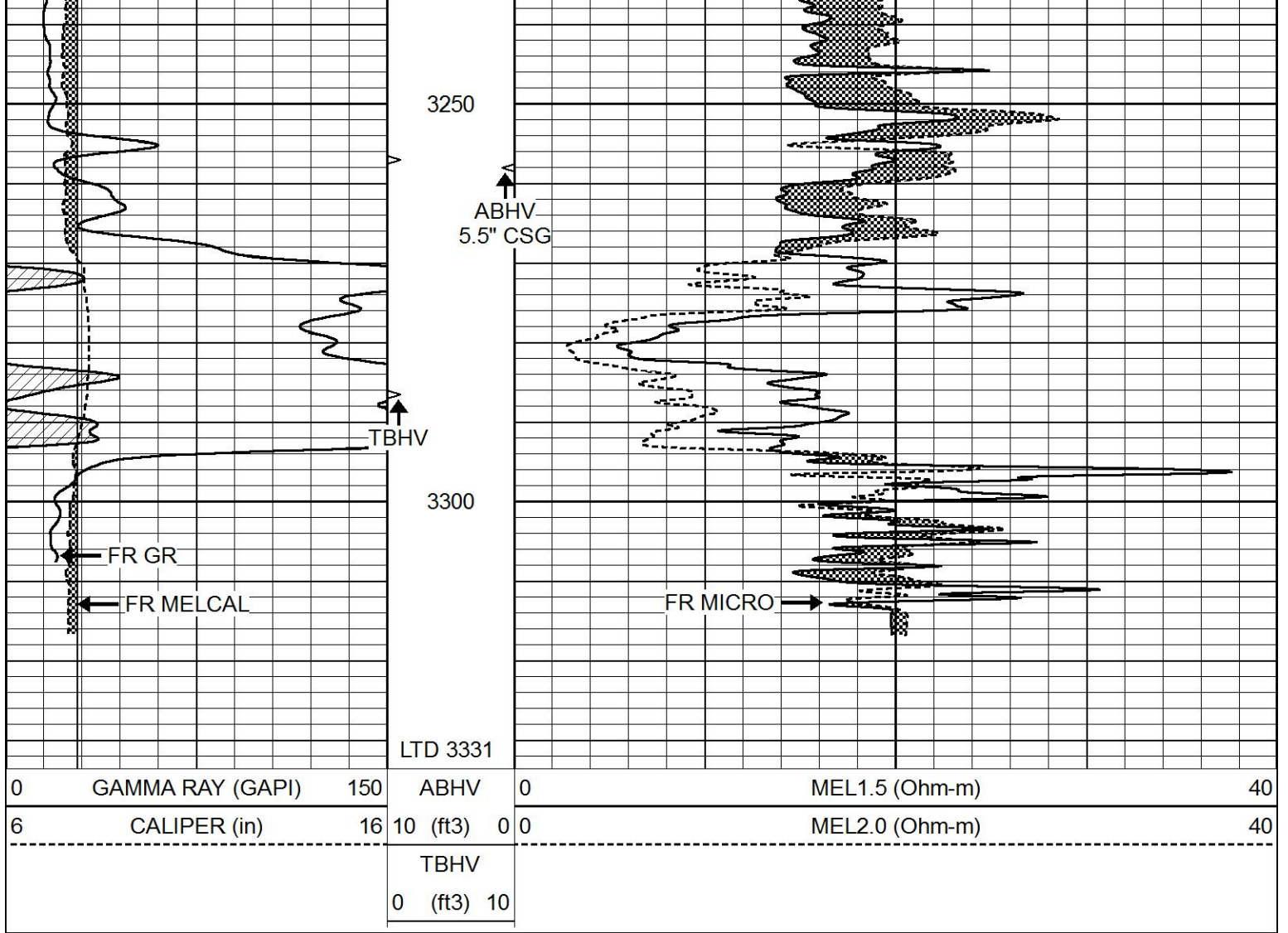
2550







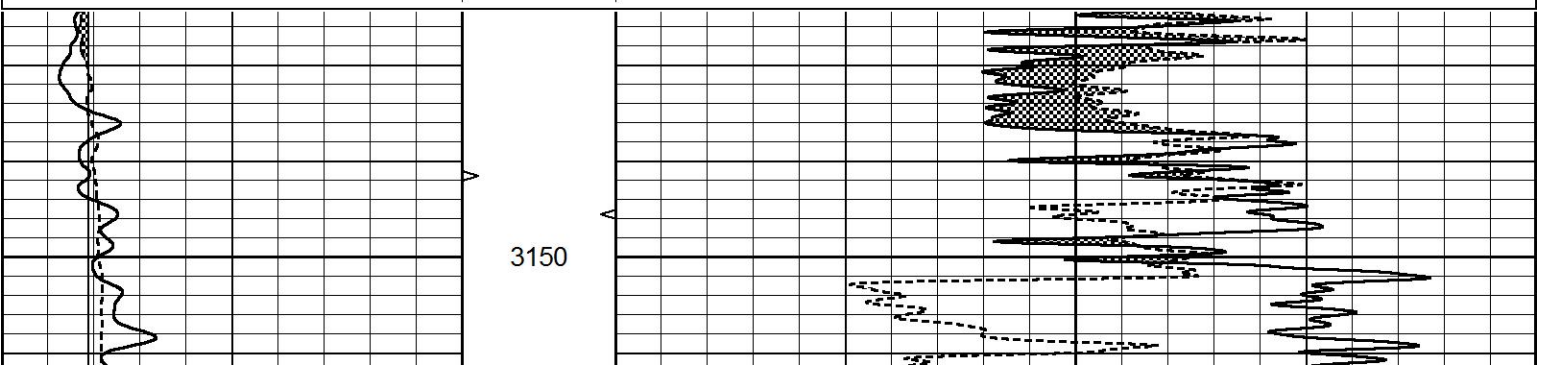


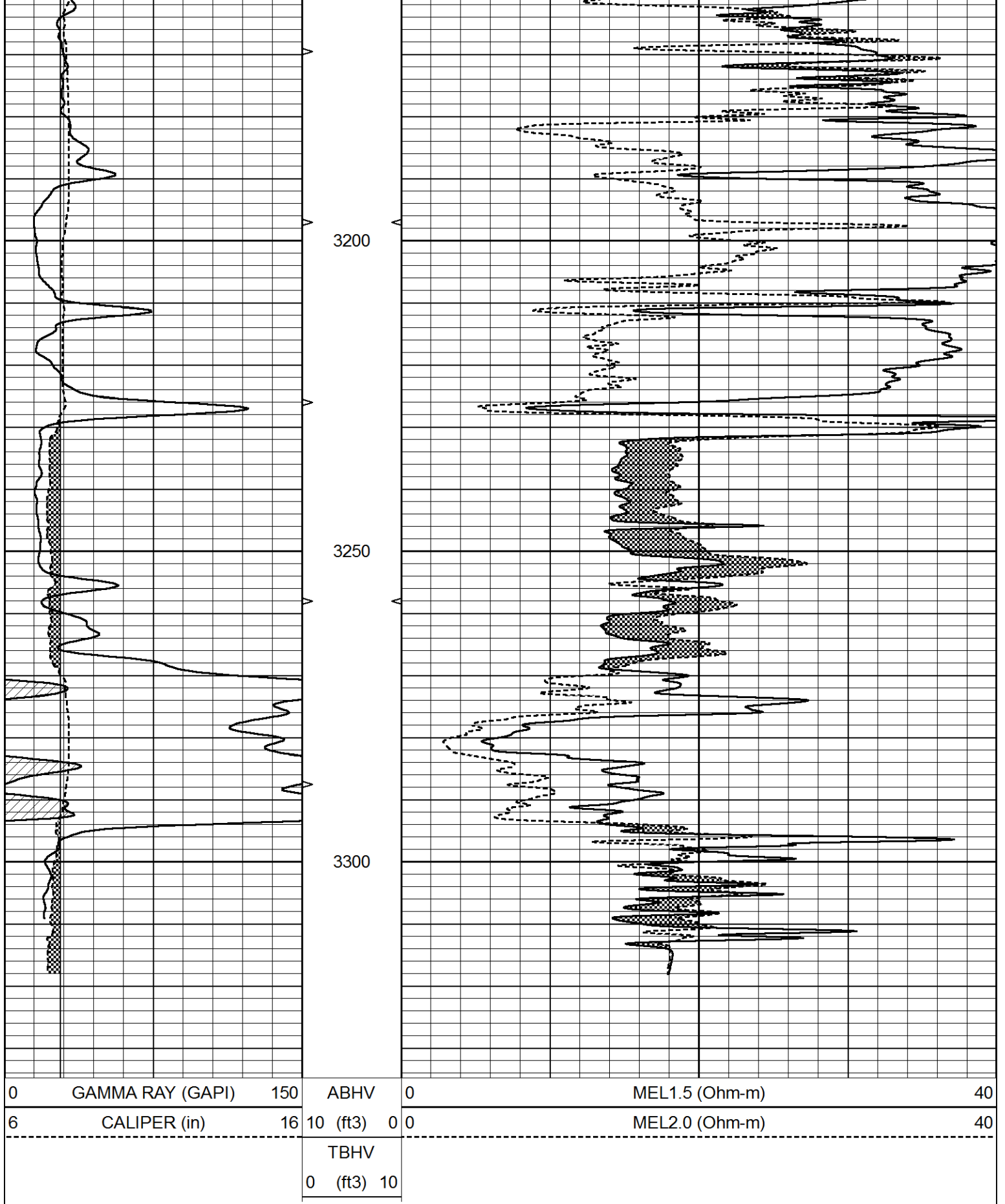


# REPEAT SECTION

Database File 5858ddn.db  
 Dataset Pathname pass5.1  
 Presentation Format \_micro  
 Dataset Creation Fri Oct 01 04:17:03 2021  
 Charted by Depth in Feet scaled 1:240

0	GAMMA RAY (GAPI)	150	ABHV	0	MEL1.5 (Ohm-m)	40
6	CALIPER (in)	16	10 (ft3) 0	0	MEL2.0 (Ohm-m)	40
			TBHV			
			0 (ft3) 10			





Calibration Report

Database File 5858ddn.db  
 Dataset Pathname pass5.1  
 Dataset Creation Fri Oct 01 04:17:03 2021

Serial Number:	070910	
Tool Model:	ProbeL	
Performed:	Thu Sep 23 20:53:46 2021	

Caliper Calibration:	Gain=7.192	Offset=2.802
References	Low Cal 8.000	High Cal 14.000
Readings	0.723	1.557

1.5" Calibration:	Gain=40.000	Offset=-0.567
References	Low Cal 0.000	High Cal 20.000
Readings	0.004	1.335

2" Calibration:	Gain=55.000	Offset=-2.000
References	Low Cal 0.000	High Cal 20.000
Readings	0.004	1.029

Microlog Calibration Report

Serial-Model:	070910-ProbeL
Performed:	(Not Performed)

	Readings			References			Results	
	Zero	Cal		Zero	Cal		m	b
Normal	0.0000	1.0000	V	0.0000	1.0000	Ohm-m	1.0000	0.0000
Inverse	0.0000	1.0000	V	0.0000	1.0000	Ohm-m	1.0000	0.0000
Caliper	0.0000	1.0000	V	0.0000	1.0000	in	1.0000	0.0000

Gamma Ray Calibration Report

Serial Number:	070558	
Tool Model:	Probe1	
Performed:	Fri Oct 30 21:32:56 2020	
Calibrator Value:	1.0	GAPI
Background Reading:	0.0	cps
Calibrator Reading:	1.0	cps
Sensitivity:	0.2700	GAPI/cps